

# Generation and Reservoirs Statistics

September 8, 2024



**PUBLIC UTILITIES COMMISSION OF SRI LANKA**

## 1. Daily Generation Mix

September 8, 2024

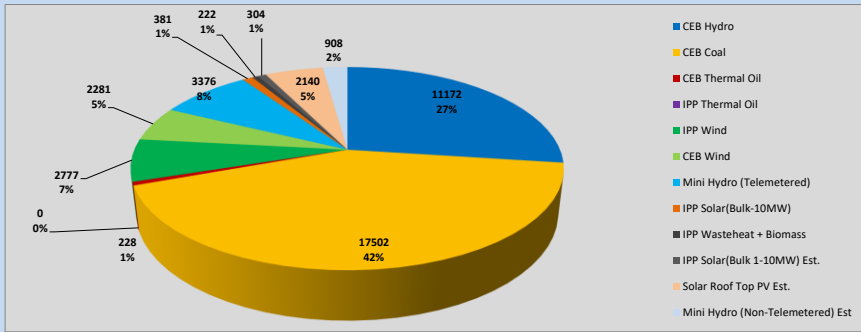


Table 01

	Generation (MWh)
CEB Hydro	11172
CEB Coal	17502
CEB Thermal Oil	228
IPP Thermal Oil	0
IPP Wind	2777
CEB Wind	2281
Mini Hydro (Telemetered)	3376
IPP Solar (Bulk)	381
IPP Waste heat + Biomass	222
<b>Total Generation (Excluding estimated figures)</b>	<b>37,939</b>
* Estimated unserved energy	0
* Estimated Mini Hydro (Non telemetered)	908
* Estimated IPP Solar PV (Bulk 1-10MW)	304
* Estimated Solar Roof Top PV	2140
<b>Total Generation (Including estimated figures)</b>	<b>41,291</b>

\* Estimated figures of CEB generation report

### 1.1 Cumulative Dispatch - 2024

Table 02 - Current Month

Category	Dispatch (GWh)	
CEB Hydro	103	27.97%
CEB Coal	151	40.92%
CEB Thermal Oil	17	4.67%
IPP Thermal	1	0.22%
IPP Wind	19	5.09%
CEB Wind	15	4.11%
Mini Hydro *	38	10.29%
IPP Solar *	23	6.12%
IPP Waste heat + BMP	2	0.61%
<b>Total</b>	<b>369</b>	

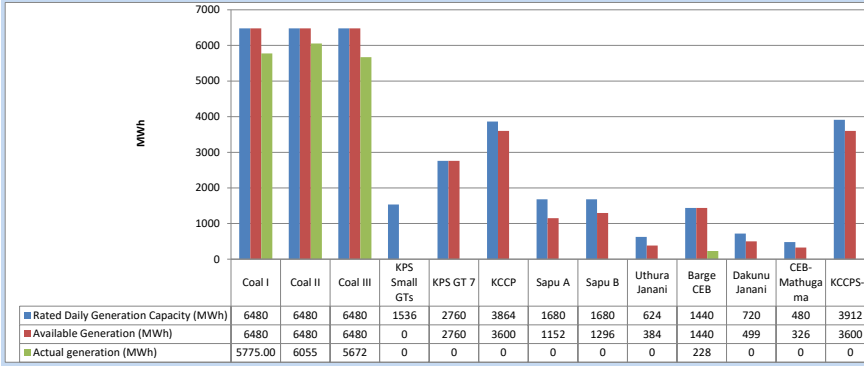
Table 03 - Current Year

Category	Dispatch (GWh)	
CEB Hydro	3,555	31.09%
CEB Coal	4,030	35.25%
CEB Thermal Oil	1,148	10.04%
IPP Thermal	510	4.46%
IPP Wind	282	2.46%
CEB Wind	281	2.46%
Mini Hydro *	832	7.27%
IPP Solar *	697	6.09%
IPP Waste heat	100	0.87%
<b>Total</b>	<b>11,433</b>	

\*Including estimated contribution from non telemetered plants

### 1.2 CEB owned Thermal Plant Dispatch

September 8, 2024

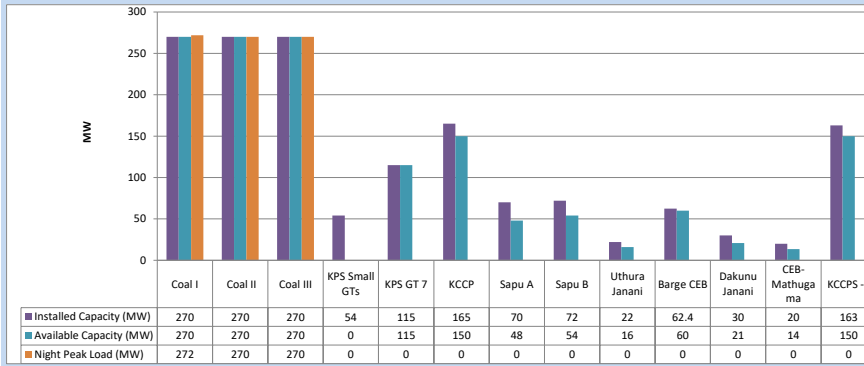


Available Generation is estimated based on plant availability at 6.00am on

September 9, 2024

### 1.3 CEB owned Thermal Plant Loading at the Night Peak

September 8, 2024

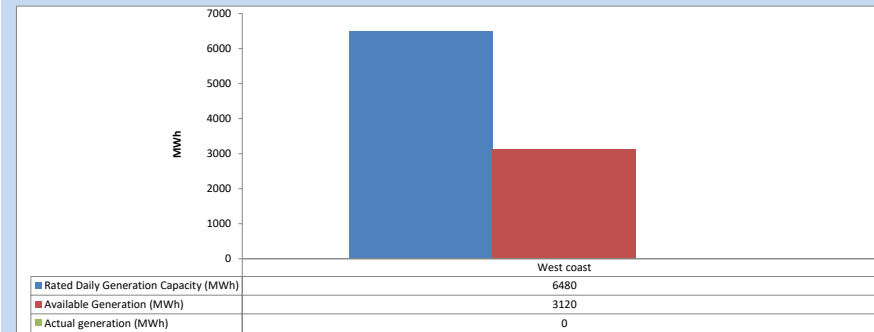


Plant availability is recorded at 6.00 am on

September 9, 2024

### 1.4 IPP owned Thermal Plant Dispatch

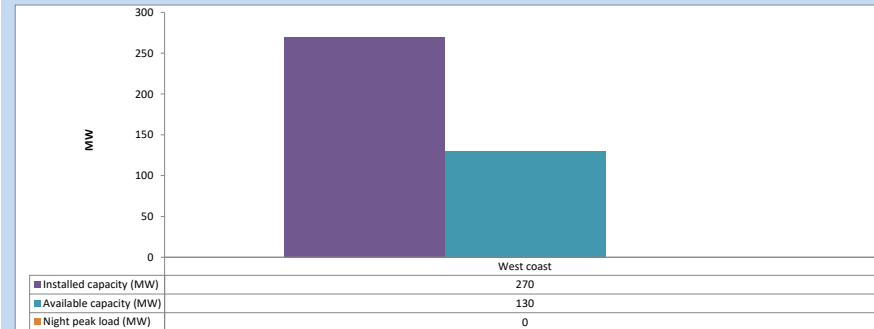
September 8, 2024



Available Generation is estimated based on plant availability at 6.00am on

September 9, 2024

### 1.5 IPP owned Thermal Plant Loading at the Night Peak

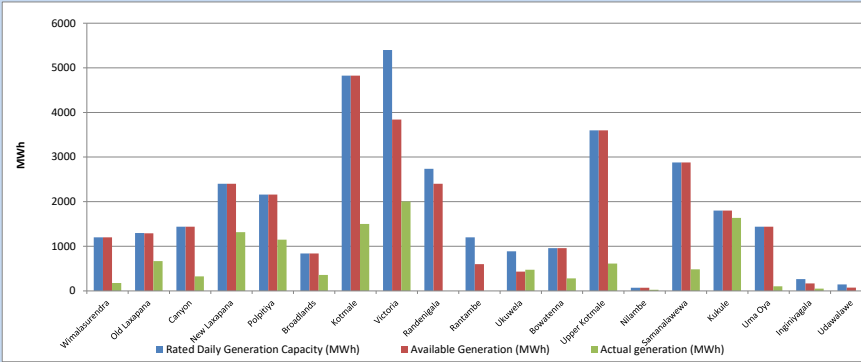


Plant availability is recorded at 6.00 am on

September 9, 2024

1.6 Major Hydro Plant Dispatch

September 8, 2024

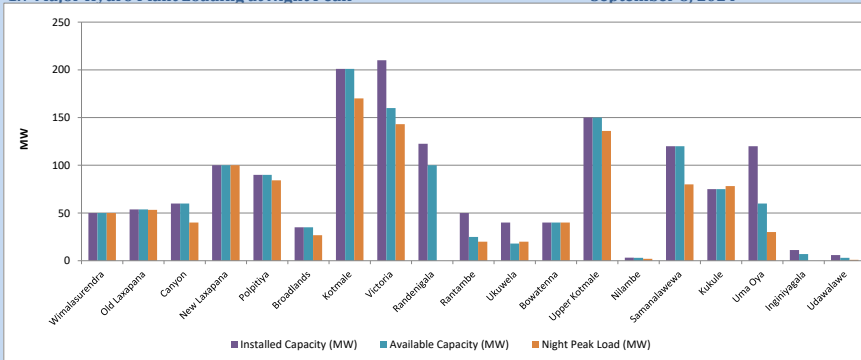


Available Generation is estimated based on plant availability at 6.00am on

September 9, 2024

1.7 Major Hydro Plant Loading at Night Peak

September 8, 2024



Plant availability is recorded at 6.00 am on

September 9, 2024

1.8 Summary of Major Plant performance

September 8, 2024

Table 04

Plant	Maximum Available Total Capacity (MW)	Plant Availability (MW)	Night peak Load (MW)	Plant Dispatch (MWh)
Wimalasurendra	50	50	50	179
Old Laxapana	54	54	53	669
Canyon	60	60	40	325
New Laxapana	100	100	100	1,317
Polpitiya	90	90	84	1,150
Broadlands	35	35	27	357
Kotmale	201	201	170	1,500
Victoria	210	160	143	2,005
Randenigala	123	100	0	0
Rantambe	50	25	20	0
Ukuwela	40	18	20	476
Bowatenna	40	40	40	280
Upper Kotmale	150	150	136	612
Nilambe	3	3	2	25
Samanalawewa	120	120	80	484
Kukule	75	75	78	1,638
Uma Oya	120	60	30	102
Inginiyagala	11	7	0	53
Udawalawe	6	3	1	0
Puttalam Coal I	270	270	272	5,775
Puttalam Coal II	270	270	270	6,055
Puttalam Coal III	270	270	270	5,672
KPS Small GTs	54	0	0	0
KPS GT 7	115	115	0	0
KCCP	165	150	0	0
Sapugaskanda A	70	48	0	0
Sapugaskanda B	72	54	0	0
Uthura Janani	22	16	0	0
Barge CEB	62	60	0	228
CEB-Hambantota	30	21	0	0
CEB-Mathugama	20	14	0	0
ACE Matara	24	0	0	0
Asia Power	50	0	0	0
KCCPS -2	163	150	0	0
West Coast	270	130	0	0
Nothern Power	36	0	0	0
ACE Embilipitiya	93	0	0	0
Sobadhanavi (Testing)	220	212	0	0
Total	3,594	2,918	2,246	37,939

Note-

Plant availability is the availability recorded at 6 am on

September 9, 2024

1.9 Contribution to the Night Peak in MW

September 8, 2024

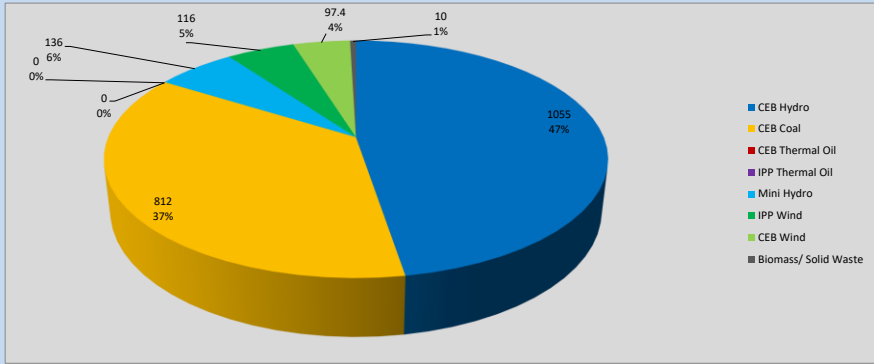


Table 05

CEB Hydro	1055	MW
CEB Coal	812	MW
CEB Thermal Oil	0	MW
IPP Thermal Oil	0	MW
Mini Hydro (Telemetered)	136	MW
IPP Wind	116	MW
CEB Wind	97.4	MW
Biomass/ Solid Waste	10	MW

Recorded Peak Demand Data

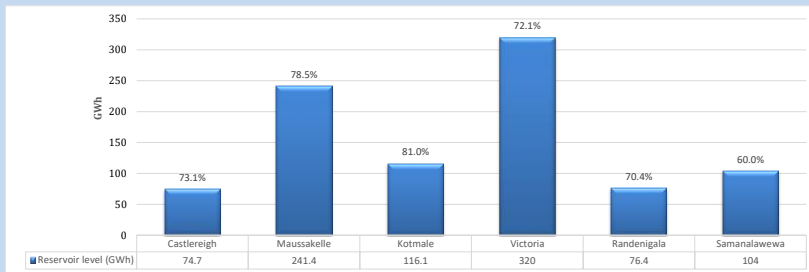
Table 06

Night Peak*	2,227	MW
Day Peak Maximum Demand	1,678	MW
Day Peak Minimum Demand	1,201	MW
Off Peak Minimum Demand	1,463	MW

Above figures are excluding contribution from roof top solar, non telemetered solar and mini hydro plants

1.10 Reservoir Levels -

as at 06.00 Hr on September 9, 2024



Total Reservoir Level 932.6 GWh  
% of Total capacity 72.9%

1.11 Day Ahead Planned Demand Vs Actual Demand (Excluding non telemetered data)

September 8, 2024

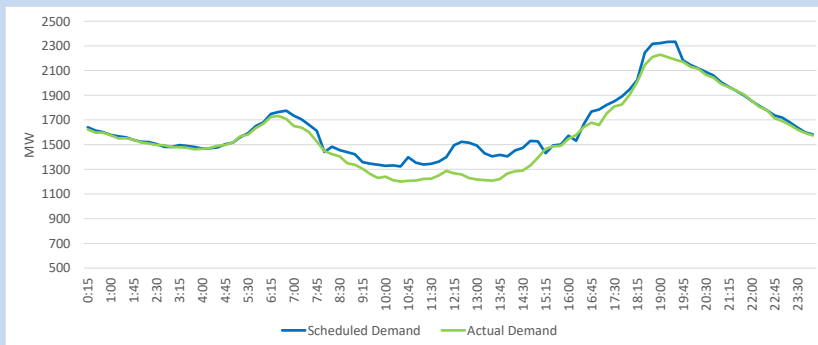
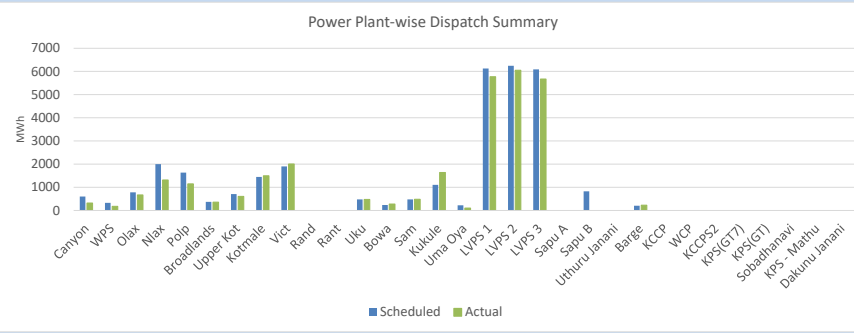


Table 07

Category	Scheduled Dispatch (MWh)	Actual Dispatch (MWh)	Deviation (MWh)
Major Hydro	12,291	11,093	(1,198)
CEB Coal	18,465	17,502	(962)
CEB Thermal Oil	1,027	228	(798)
IPP Thermal Oil	-	-	-
IPP Wind (Telemetered)	7,658	9,193	1,535
<b>Total</b>	<b>39,441</b>	<b>38,017</b>	<b>-1424</b>

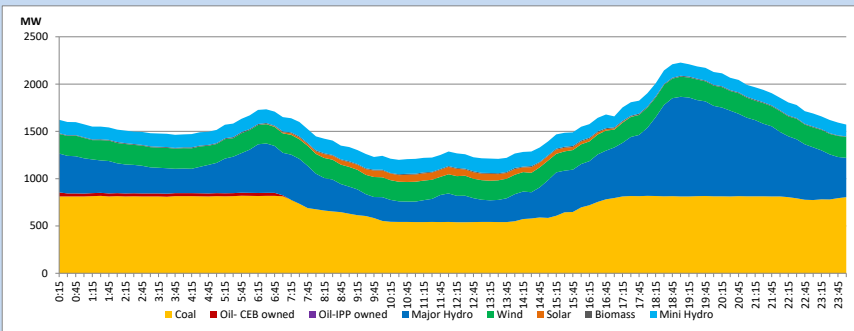
1.12 Power Plant-wise Dispatch Summary

September 8, 2024



1.13 Daily Load Curve

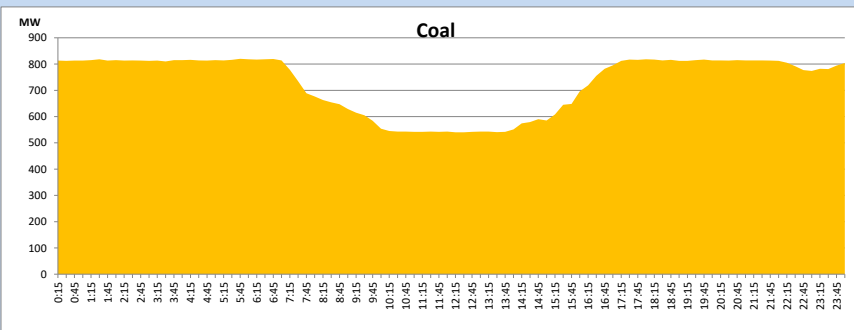
September 8, 2024



Solar and wind data is based on Telemetered Power Stations only

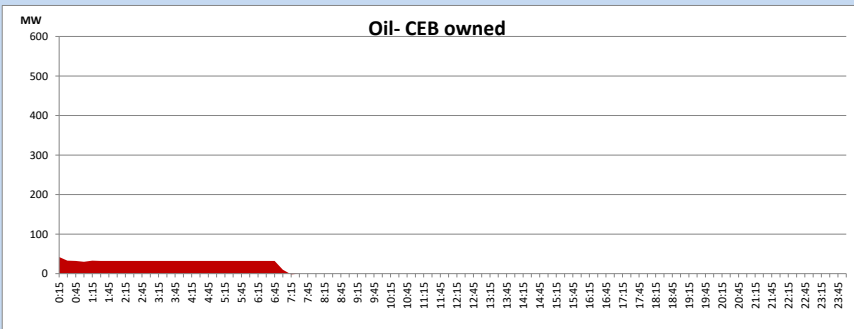
Coal Generation during

September 8, 2024

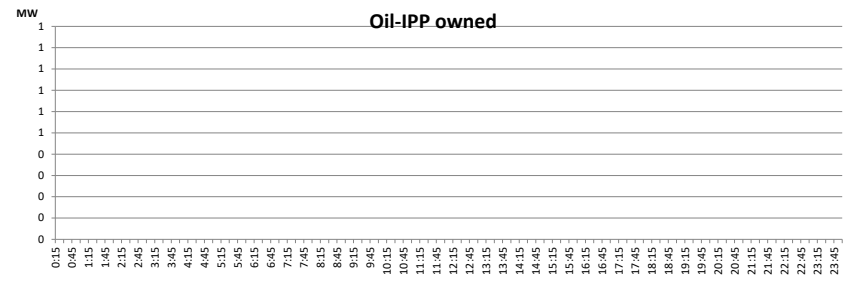


CEB Oil Plant Generation during

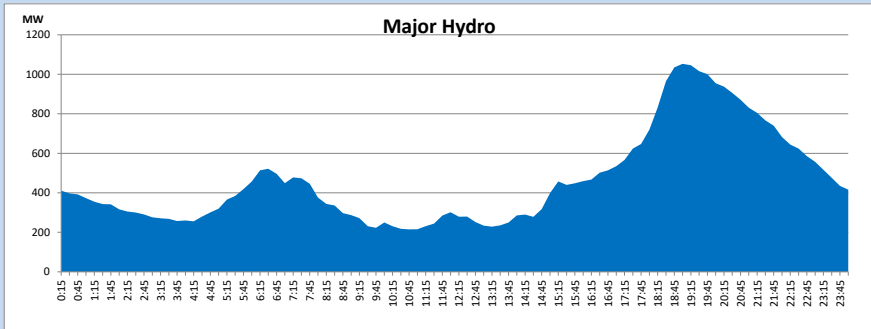
September 8, 2024



IPP Oil Plant Generation during September 8, 2024

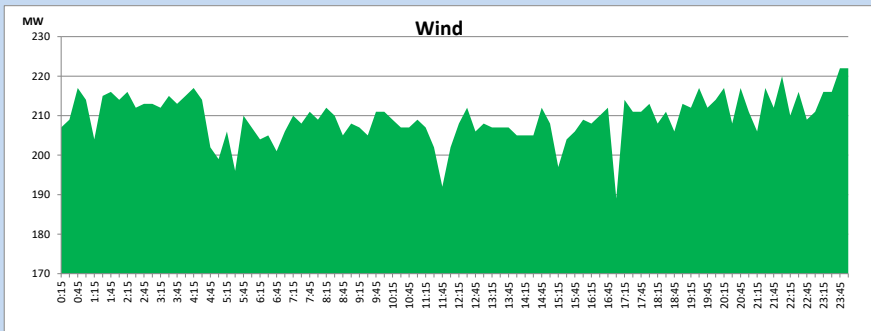


Major Hydro Generation during September 8, 2024



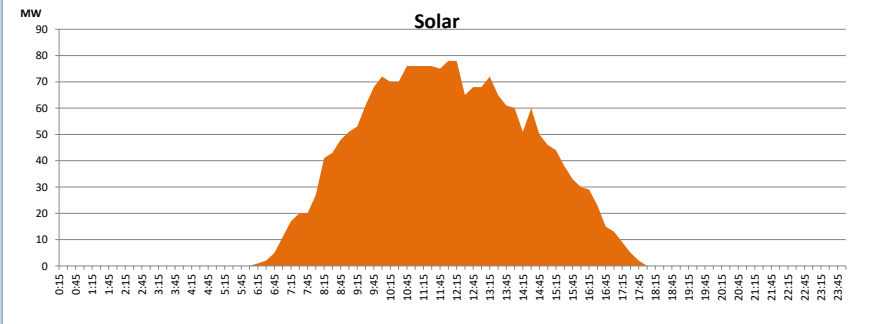
Wind Generation during September 8, 2024

Based on Telemetered Power Stations only



Solar Generation during September 8, 2024

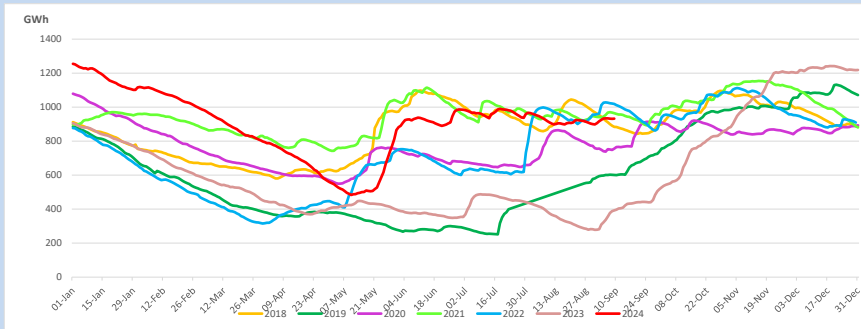
Based on Telemetered Power Stations only



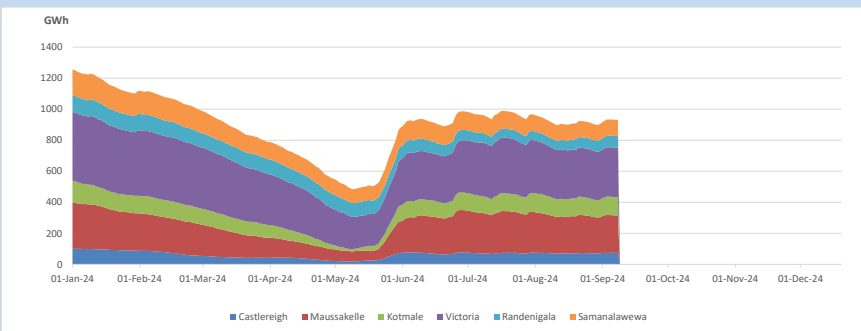
1.14 Major Incidents reported during the day September 8, 2024

1) Nil.

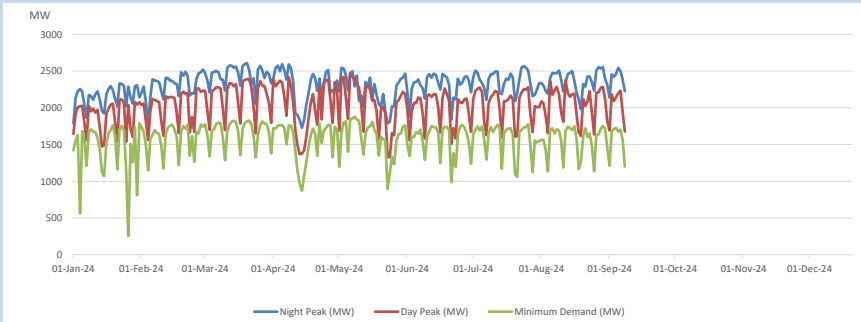
## 2. Comparison of Total Reservoir Storage Levels with Past Years



## 3. Variation of Major Hydro Reservoir Levels in the current year (GWh)



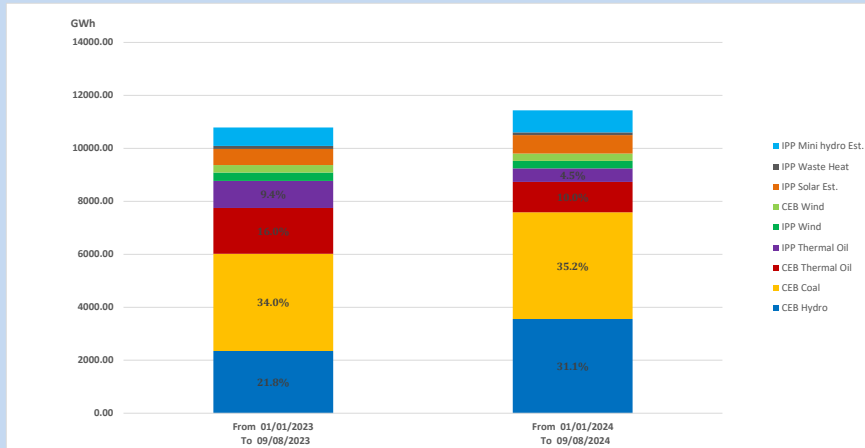
## 4. Variation of Demand during the current year



The above figures are excluding contribution from roof top solar, non telemetered solar and mini hydro plants



## 5. Cumulative Dispatch Comparison with Last Year



### Cumulative dispatch

From 01/01/2023 To 09/08/2023

10789 GWh

From 01/01/2024 To 09/07/2024

11433 GWh

The above figures are including contribution from roof top solar, non telemetered solar and mini hydro plants)

Unserviced energy due to power cuts has been excluded in 2023

### Thermal Power Plant - Fuel types

Table 08

Power Station	Primary Fuel
CEB Thermal	
Sapugaskanda 1	Heavy Fuel
Sapugaskanda 2	Heavy Fuel
Kelanitissa Small Gas Turbines	Auto Diesel
GT 7 - Kelanitissa	Auto Diesel
Kelanitissa CCY	Naphtha or Diesel
Lakvijaya 1	Coal
Lakvijaya 2	Coal
Lakvijaya 3	Coal
Uthuru Janani	Heavy Fuel
Barge CEB	Heavy Fuel
KCCPS -2	Auto Diesel

Power Station	Primary Fuel
Private Thermal	
West Coast	Auto Diesel / Heavy Fuel
Sobadhanavi	Auto Diesel

## 6. Installed System Capacity

Table 09

	Installed Capacity (MW)
CEB Hydro	1530
CEB Coal	810
CEB Thermal Oil	786
IPP Thermal Oil (West Coast & Sobadhanavi)	482
IPP Wind	163
CEB Wind	100
Mini Hydro	422
IPP Waste heat + Biomass	54
IPP Solar	137
Rooftop Solar (Ordinary)	343
Rooftop Solar (LT Bulk)	289
Rooftop Solar (HT Bulk)	84

Data Source - Monthly Review Report - May 2024 for NCRE installed capacities