

Generation and Reservoirs Statistics

August 31, 2024



PUBLIC UTILITIES COMMISSION OF SRI LANKA

1. Daily Generation Mix

August 31, 2024

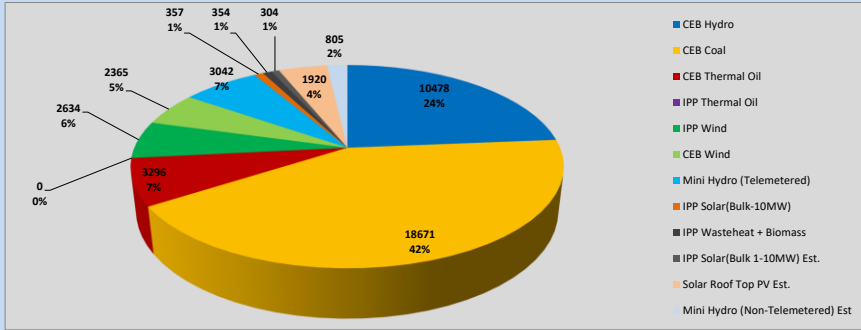


Table 01

	Generation (MWh)
CEB Hydro	10,478
CEB Coal	18,671
CEB Thermal Oil	3,296
IPP Thermal Oil	0
IPP Wind	2,634
CEB Wind	2,365
Mini Hydro (Telemetered)	3,042
IPP Solar (Bulk)	357
IPP Waste heat + Biomass	354
Total Generation (Excluding estimated figures)	41,197
* Estimated unserved energy	0
* Estimated Mini Hydro (Non telemetered)	805
* Estimated IPP Solar PV (Bulk 1-10MW)	304
* Estimated Solar Roof Top PV	1,920
Total Generation (Including estimated figures)	44,226

* Estimated figures of CEB generation report

1.1 Cumulative Dispatch - 2024

Table 02 - Current Month

Category	Dispatch (GWh)	
CEB Hydro	438	31.01%
CEB Coal	504	35.68%
CEB Thermal Oil	147	10.42%
IPP Thermal	33	2.36%
IPP Wind	45	3.18%
CEB Wind	51	3.58%
Mini Hydro *	107	7.56%
IPP Solar *	79	5.59%
IPP Waste heat + BMP	9	0.63%
Total	1,412	

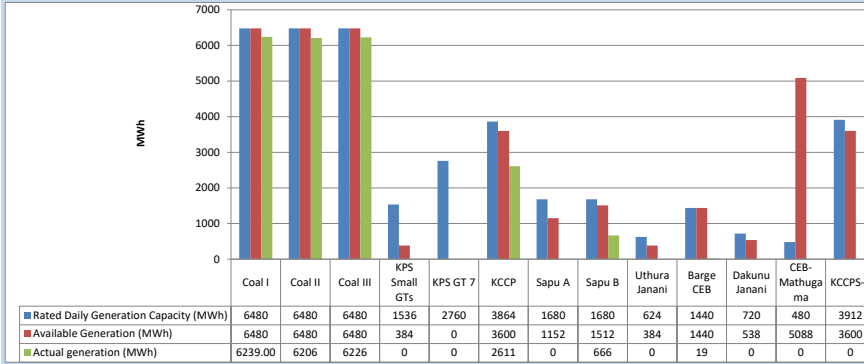
Table 03 - Current Year

Category	Dispatch (GWh)	
CEB Hydro	3,452	31.20%
CEB Coal	3,879	35.06%
CEB Thermal Oil	1,131	10.22%
IPP Thermal	509	4.60%
IPP Wind	263	2.37%
CEB Wind	266	2.40%
Mini Hydro *	794	7.17%
IPP Solar *	674	6.09%
IPP Waste heat	98	0.88%
Total	11,064	

*Including estimated contribution from non telemetered plants

1.2 CEB owned Thermal Plant Dispatch

August 31, 2024

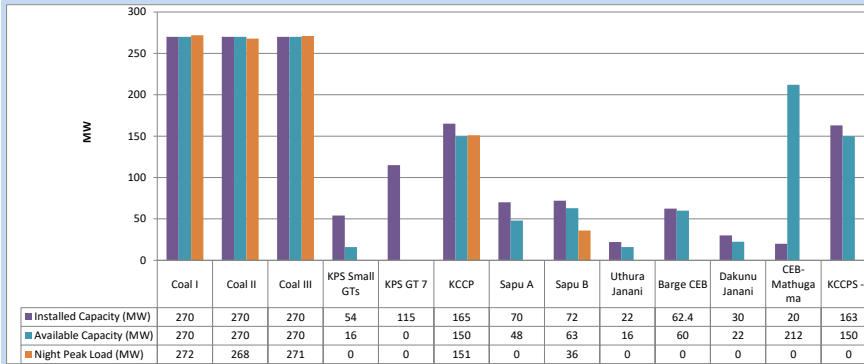


Available Generation is estimated based on plant availability at 6.00am on

September 1, 2024

1.3 CEB owned Thermal Plant Loading at the Night Peak

August 31, 2024

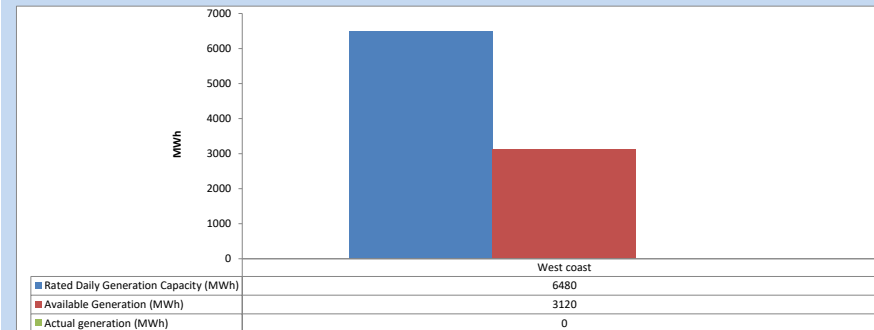


Plant availability is recorded at 6.00 am on

September 1, 2024

1.4 IPP owned Thermal Plant Dispatch

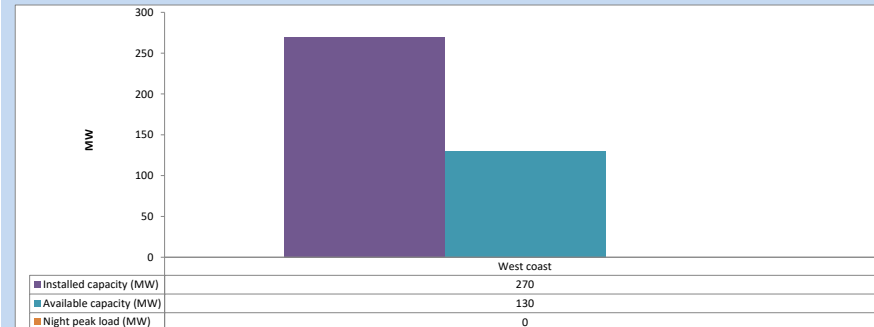
August 31, 2024



Available Generation is estimated based on plant availability at 6.00am on

September 1, 2024

1.5 IPP owned Thermal Plant Loading at the Night Peak

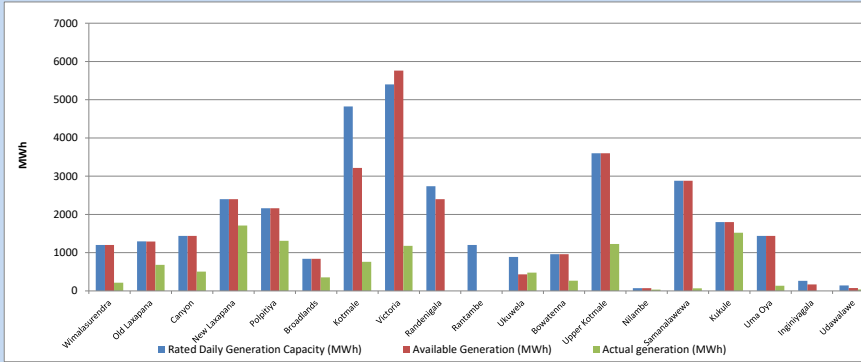


Plant availability is recorded at 6.00 am on

September 1, 2024

1.6 Major Hydro Plant Dispatch

August 31, 2024

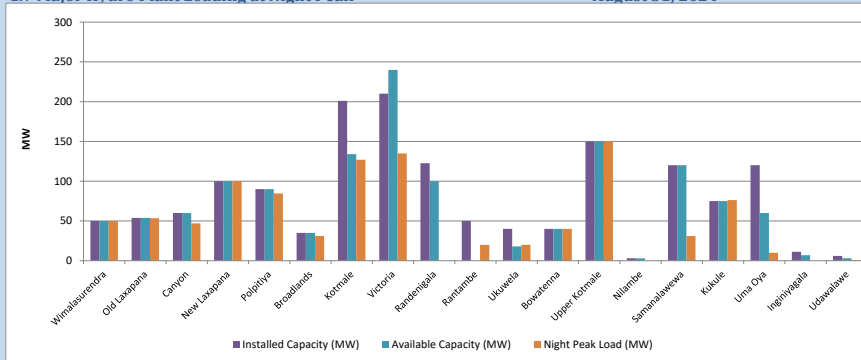


Available Generation is estimated based on plant availability at 6.00am on

September 1, 2024

1.7 Major Hydro Plant Loading at Night Peak

August 31, 2024



Plant availability is recorded at 6.00 am on

September 1, 2024

1.8 Summary of Major Plant performance

August 31, 2024

Table 04

Plant	Maximum Available Total Capacity (MW)	Plant Availability (MW)	Night peak Load (MW)	Plant Dispatch (MWh)
Wimalasurendra	50	50	50	215
Old Laxapana	54	54	53	682
Canyon	60	60	47	503
New Laxapana	100	100	100	1,711
Polpitiya	90	90	85	1,310
Broadlands	35	35	31	353
Kotmale	201	134	127	760
Victoria	210	240	135	1,179
Randenigala	123	100	0	0
Rantambe	50	0	20	0
Ukuwela	40	18	20	480
Bowatenna	40	40	40	266
Upper Kotmale	150	150	150	1,226
Nilambe	3	3	0	33
Samanalawewa	120	120	31	67
Kukule	75	75	76	1,521
Uma Oya	120	60	10	137
Inginiyagala	11	7	0	0
Udawalawe	6	3	1	37
Puttalam Coal I	270	270	272	6,239
Puttalam Coal II	270	270	268	6,206
Puttalam Coal III	270	270	271	6,226
KPS Small GTs	54	16	0	0
KPS GT 7	115	0	0	0
KCCP	165	150	151	2,611
Sapugaskanda A	70	48	0	0
Sapugaskanda B	72	63	36	666
Uthura Janani	22	16	0	0
Barge CEB	62	60	0	19
CEB-Hambantota	30	22	0	0
CEB-Mathugama	20	212	0	0
ACE Matara	24	0	0	0
Asia Power	50	0	0	0
KCCPS -2	163	150	0	0
West Coast	270	130	0	0
Nothern Power	36	0	0	0
ACE Embilipitiya	93	0	0	0
Sobadhanavi (Testing)	220	212	0	0
Total	3,594	3,016	2,337	41,199

Note-

Plant availability is the availability recorded at 6 am on

September 1, 2024

1.9 Contribution to the Night Peak in MW

August 31, 2024

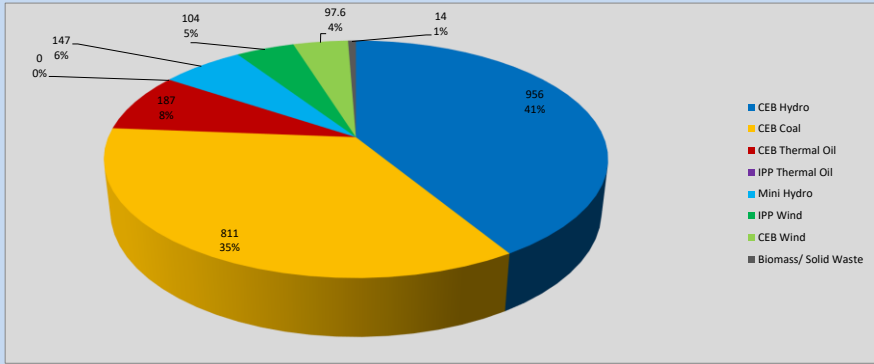


Table 05

CEB Hydro	956	MW
CEB Coal	811	MW
CEB Thermal Oil	187	MW
IPP Thermal Oil	0	MW
Mini Hydro (Telemetered)	147	MW
IPP Wind	104	MW
CEB Wind	97.6	MW
Biomass/ Solid Waste	14	MW

Recorded Peak Demand Data

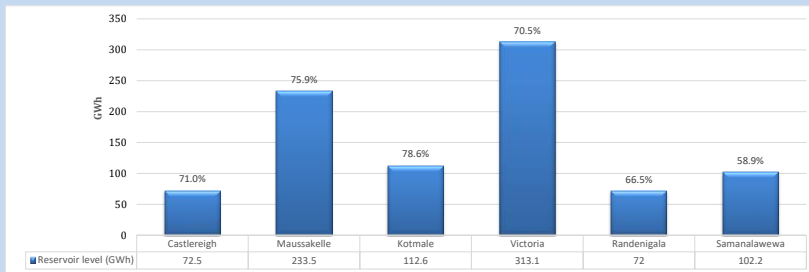
Table 06

Night Peak*	2,317	MW
Day Peak Maximum Demand	1,821	MW
Day Peak Minimum Demand	1,458	MW
Off Peak Minimum Demand	1,430	MW

Above figures are excluding contribution from roof top solar, non telemetered solar and mini hydro plants

1.10 Reservoir Levels -

as at 06.00 Hr on September 1, 2024



Total Reservoir Level
% of Total capacity

905.9 GWh
70.8%

1.11 Day Ahead Planned Demand Vs Actual Demand (Excluding non telemetered data)

August 31, 2024

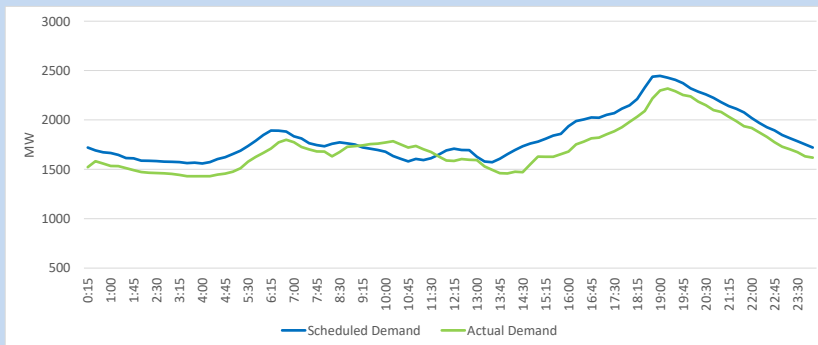
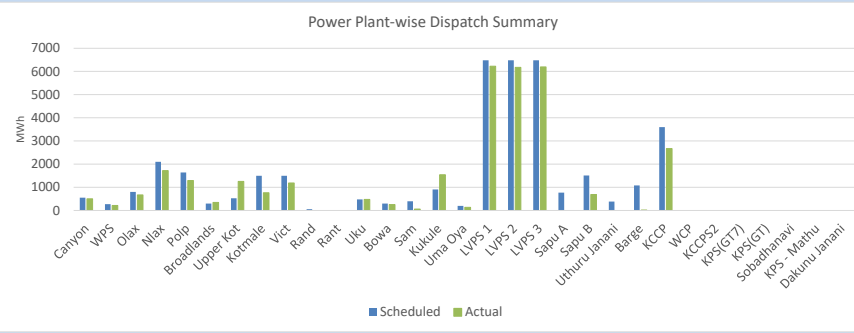


Table 07

Category	Scheduled Dispatch (MWh)	Actual Dispatch (MWh)	Deviation (MWh)
Major Hydro	11,526	10,432	(1,095)
CEB Coal	19,440	18,595	(845)
CEB Thermal Oil	7,344	3,382	(3,962)
IPP Thermal Oil	-	-	-
IPP (Telemetered)	5,598	8,851	3,253
Total	43,908	41,259	-2,649

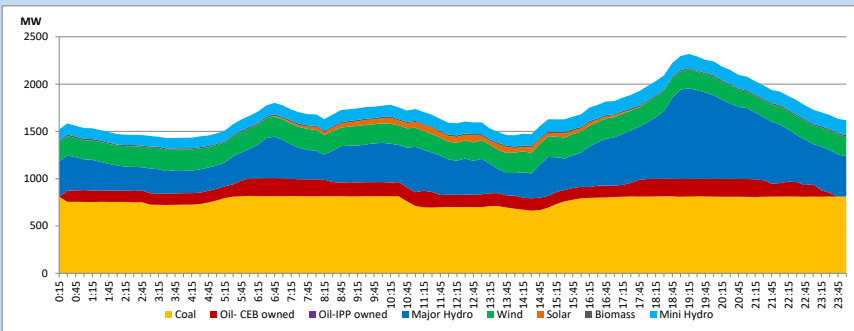
1.12 Power Plant-wise Dispatch Summary

August 31, 2024



1.13 Daily Load Curve

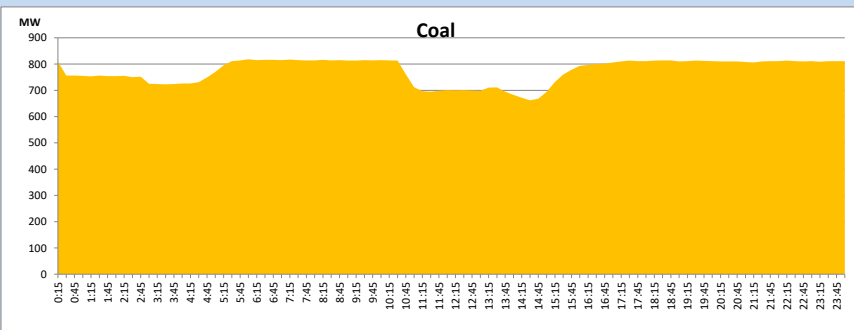
August 31, 2024



Solar and wind data is based on Telemetered Power Stations only

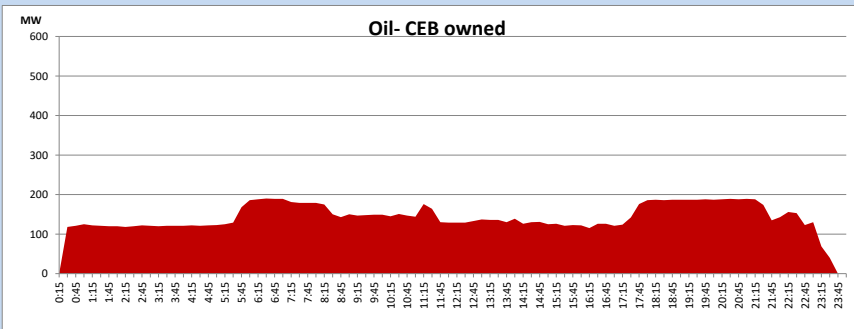
Coal Generation during

August 31, 2024

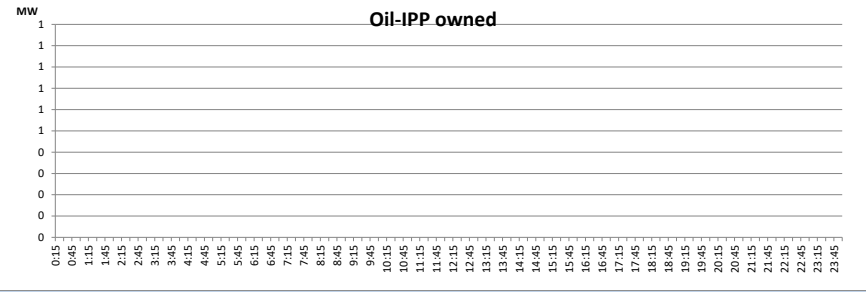


CEB Oil Plant Generation during

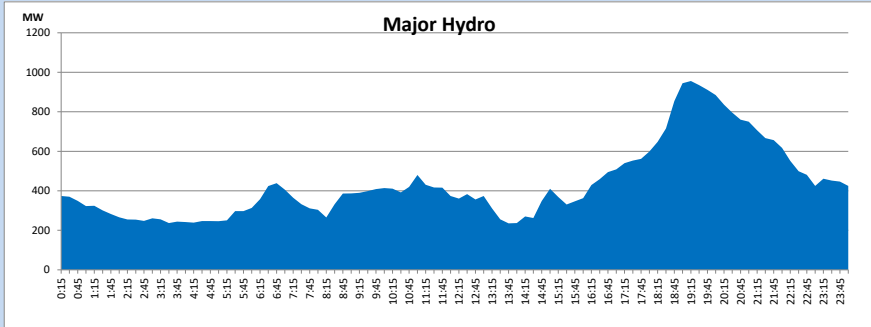
August 31, 2024



IPP Oil Plant Generation during August 31, 2024

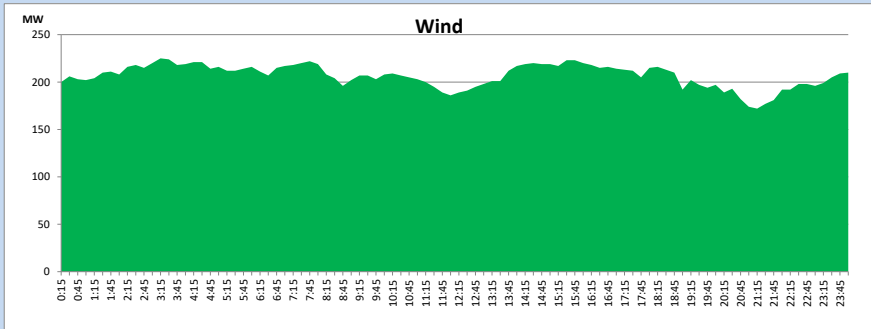


Major Hydro Generation during August 31, 2024



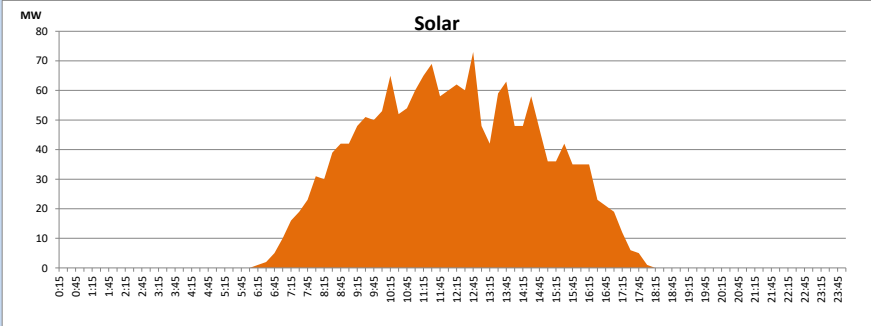
Wind Generation during August 31, 2024

Based on Telemetered Power Stations only



Solar Generation during August 31, 2024

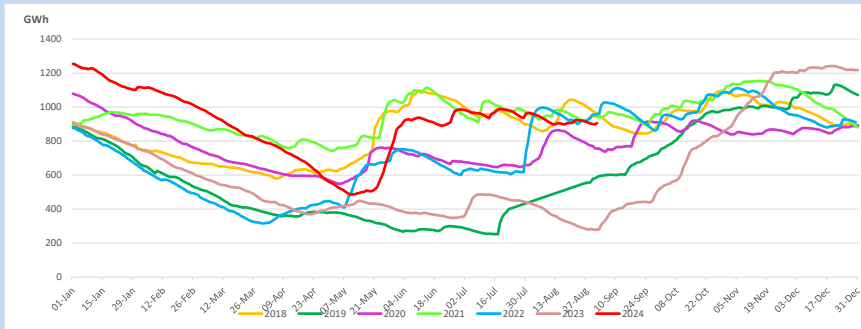
Based on Telemetered Power Stations only



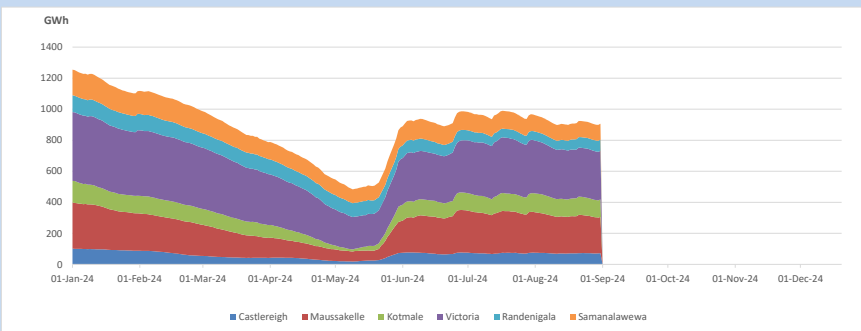
1.14 Major Incidents reported during the day August 31, 2024

1) Matara GSS 33kV bus section 02 tripped, and 33kV feeders 10 & 11 tripped & A/R at 15:57hrs due to the operation of earth fault protection. The 33kV bus section was normalized at 16:05hrs.

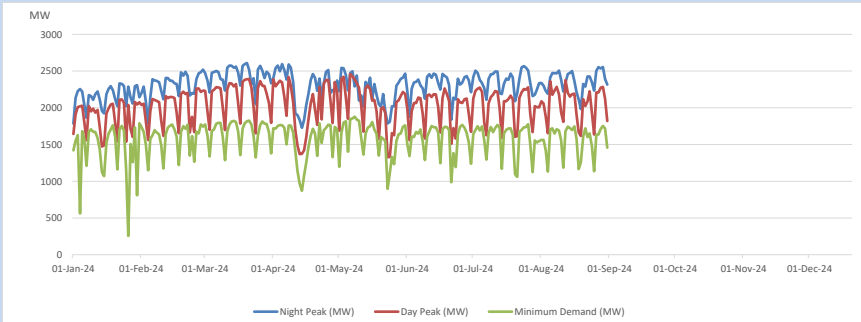
2. Comparison of Total Reservoir Storage Levels with Past Years



3. Variation of Major Hydro Reservoir Levels in the current year (GWh)

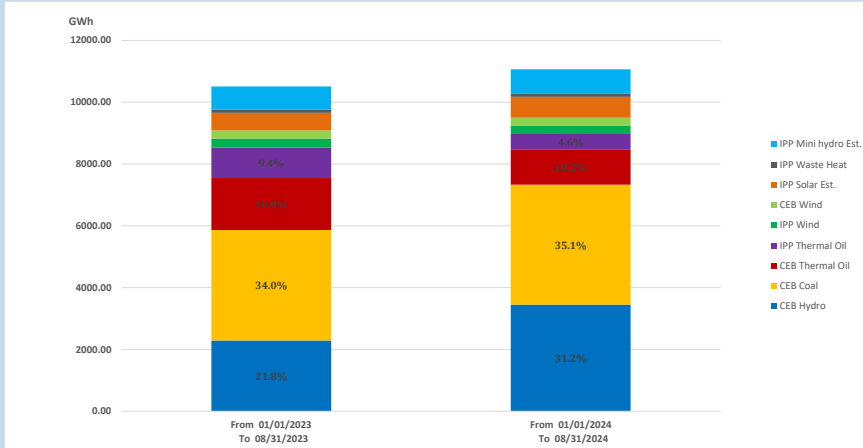


4. Variation of Demand during the current year



The above figures are excluding contribution from roof top solar, non telemetered solar and mini hydro plants

5. Cumulative Dispatch Comparison with Last Year



Cumulative dispatch

From 01/01/2023 To 08/31/2023

10510 GWh

From 01/01/2024 To 08/31/2024

11064 GWh

The above figures are including contribution from roof top solar, non telemetered solar and mini hydro plants)

Unserviced energy due to power cuts has been excluded in 2023

Thermal Power Plant - Fuel types

Table 08

Power Station	Primary Fuel
CEB Thermal	
Sapugaskanda 1	Heavy Fuel
Sapugaskanda 2	Heavy Fuel
Kelanitissa Small Gas Turbines	Auto Diesel
GT 7 - Kelanitissa	Auto Diesel
Kelanitissa CCY	Naphtha or Diesel
Lakvijaya 1	Coal
Lakvijaya 2	Coal
Lakvijaya 3	Coal
Uthuru Janani	Heavy Fuel
Barge CEB	Heavy Fuel
KCCPS -2	Auto Diesel

Power Station	Primary Fuel
Private Thermal	
West Coast	Auto Diesel / Heavy Fuel
Sobadhanavi	Auto Diesel

6. Installed System Capacity

Table 09

	Installed Capacity (MW)
CEB Hydro	1530
CEB Coal	810
CEB Thermal Oil	786
IPP Thermal Oil (West Coast & Sobadhanavi)	482
IPP Wind	163
CEB Wind	100
Mini Hydro	422
IPP Waste heat + Biomass	54
IPP Solar	137
Rooftop Solar (Ordinary)	343
Rooftop Solar (LT Bulk)	289
Rooftop Solar (HT Bulk)	84

Data Source - Monthly Review Report - May 2024 for NCRE installed capacities