

Generation and Reservoirs Statistics

September 27, 2024



PUBLIC UTILITIES COMMISSION OF SRI LANKA

1. Daily Generation Mix

September 27, 2024

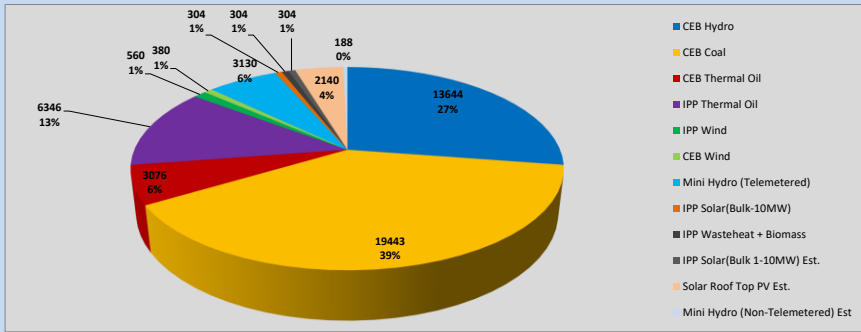


Table 01

	Generation (MWh)
CEB Hydro	13644
CEB Coal	19443
CEB Thermal Oil	3076
IPP Thermal Oil	6346
IPP Wind	560
CEB Wind	380
Mini Hydro (Telemetered)	3130
IPP Solar (Bulk)	304
IPP Waste heat + Biomass	304
Total Generation (Excluding estimated figures)	47,187
* Estimated unserved energy	0
* Estimated Mini Hydro (Non telemetered)	188
* Estimated IPP Solar PV (Bulk 1-10MW)	304
* Estimated Solar Roof Top PV	2140
Total Generation (Including estimated figures)	49,819

* Estimated figures of CEB generation report

1.1 Cumulative Dispatch - 2024

Table 02 - Current Month

Category	Dispatch (GWh)	
CEB Hydro	363	29.48%
CEB Coal	477	38.71%
CEB Thermal Oil	59	4.79%
IPP Thermal	40	3.22%
IPP Wind	62	5.00%
CEB Wind	52	4.25%
Mini Hydro *	95	7.68%
IPP Solar *	77	6.24%
IPP Waste heat + BMP	8	0.62%
Total	1,233	

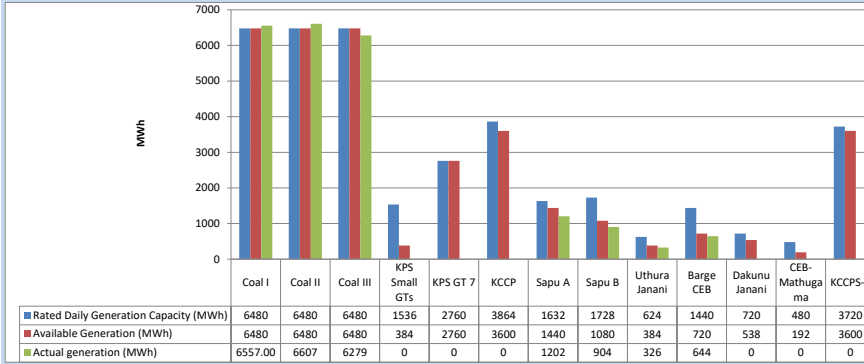
Table 03 - Current Year

Category	Dispatch (GWh)	
CEB Hydro	3,815	31.02%
CEB Coal	4,356	35.43%
CEB Thermal Oil	1,190	9.68%
IPP Thermal	549	4.46%
IPP Wind	324	2.64%
CEB Wind	318	2.59%
Mini Hydro *	888	7.22%
IPP Solar *	751	6.11%
IPP Waste heat	105	0.86%
Total	12,296	

*Including estimated contribution from non telemetered plants

1.2 CEB owned Thermal Plant Dispatch

September 27, 2024

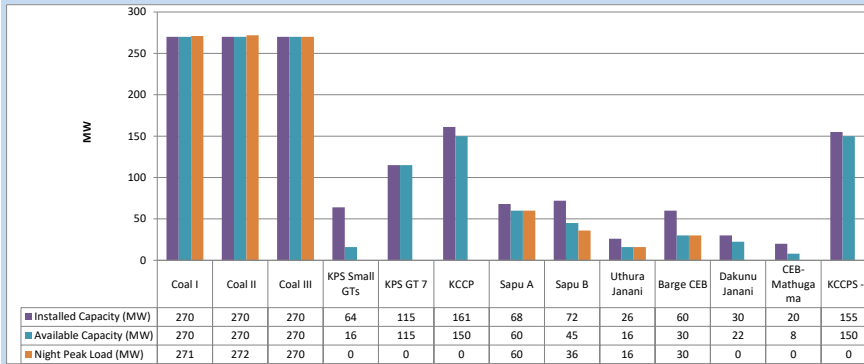


Available Generation is estimated based on plant availability at 6.00am on

September 28, 2024

1.3 CEB owned Thermal Plant Loading at the Night Peak

September 27, 2024

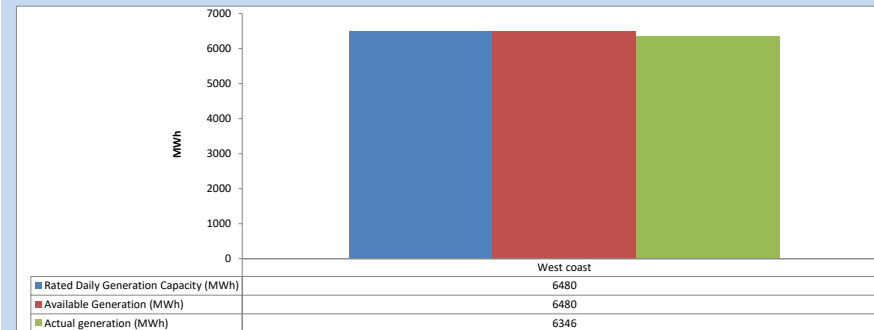


Plant availability is recorded at 6.00 am on

September 28, 2024

1.4 IPP owned Thermal Plant Dispatch

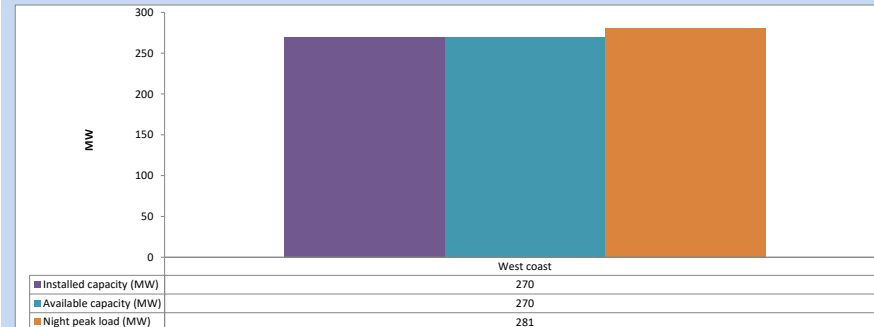
September 27, 2024



Available Generation is estimated based on plant availability at 6.00am on

September 28, 2024

1.5 IPP owned Thermal Plant Loading at the Night Peak

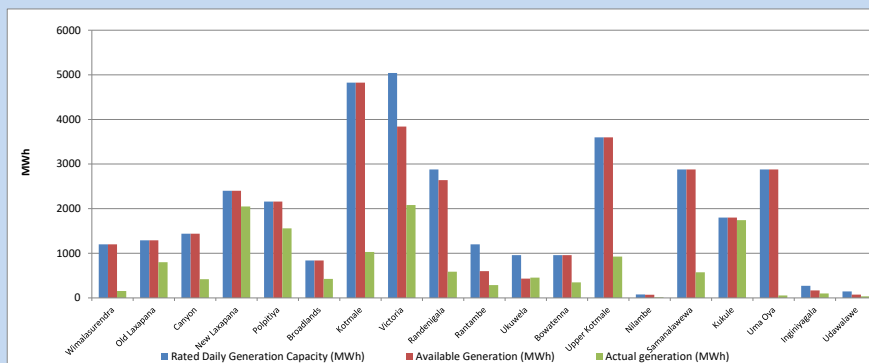


Plant availability is recorded at 6.00 am on

September 28, 2024

1.6 Major Hydro Plant Dispatch

September 27, 2024

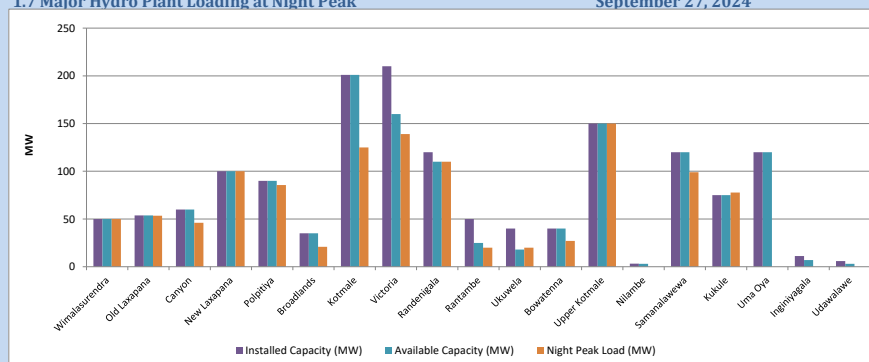


Available Generation is estimated based on plant availability at 6.00am on

September 28, 2024

1.7 Major Hydro Plant Loading at Night Peak

September 27, 2024



Plant availability is recorded at 6.00 am on

September 28, 2024

1.8 Summary of Major Plant performance

September 27, 2024

Table 04

Plant	Maximum Available Total Capacity (MW)	Plant Availability (MW)	Night peak Load (MW)	Plant Dispatch (MWh)
Wimalasurendra	50	50	50	154
Old Laxapana	54	54	54	799
Canyon	60	60	46	419
New Laxapana	100	100	100	2,049
Polpitiya	90	90	86	1,560
Broadlands	35	35	21	425
Kotmale	201	201	125	1,030
Victoria	210	160	139	2,083
Randenigala	120	110	110	586
Rantambe	50	25	20	286
Ukuwela	40	18	20	456
Bowatenna	40	40	27	348
Upper Kotmale	150	150	150	926
Nilambe	3	3	0	13
Samanalawewa	120	120	99	576
Kukule	75	75	78	1,742
Uma Oya	120	120	0	54
Inginiyagala	11	7	0	101
Udawalawe	6	3	0	37
Puttalam Coal I	270	270	271	6,557
Puttalam Coal II	270	270	272	6,607
Puttalam Coal III	270	270	270	6,279
KPS Small GTs	64	16	0	0
KPS GT 7	115	115	0	0
KCCP	161	150	0	0
Sapugaskanda A	68	60	60	1,202
Sapugaskanda B	72	45	36	904
Uthura Janani	26	16	16	326
Barge CEB	60	30	30	644
CEB-Hambantota	30	22	0	0
CEB-Mathugama	20	8	0	0
KCCPS -2	155	150	0	0
West Coast	270	270	281	6,346
Sobadhanavi	220	212	0	0
Total	3,606	3,113	2,518	47,187

Note-

Plant availability is the availability recorded at 6 am on

September 28, 2024

1.9 Contribution to the Night Peak in MW

September 27, 2024

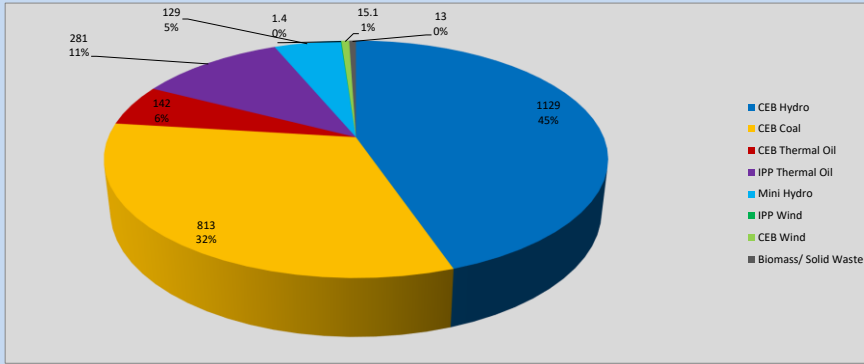


Table 05

CEB Hydro	1129	MW
CEB Coal	813	MW
CEB Thermal Oil	142	MW
IPP Thermal Oil	281	MW
Mini Hydro (Telemetered)	129	MW
IPP Wind	1.4	MW
CEB Wind	15.1	MW
Biomass/ Solid Waste	13	MW

Recorded Peak Demand Data

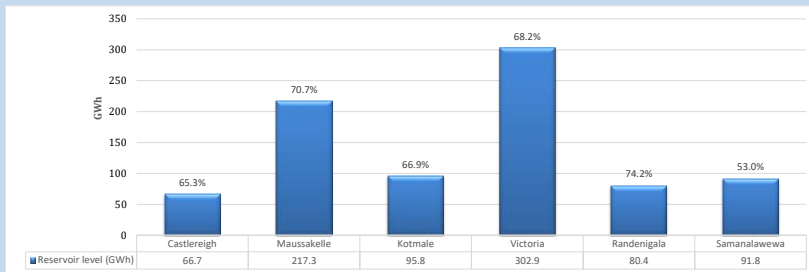
Table 06

Night Peak*	2,524	MW
Day Peak Maximum Demand	2,353	MW
Day Peak Minimum Demand	1,794	MW
Off Peak Minimum Demand	1,581	MW

Above figures are excluding contribution from roof top solar, non telemetered solar and mini hydro plants

1.10 Reservoir Levels -

as at 06.00 Hr on September 28, 2024



Total Reservoir Level
854.9 GWh
% of Total capacity
66.9%

1.11 Day Ahead Planned Demand Vs Actual Demand (Excluding non telemetered data)

September 27, 2024

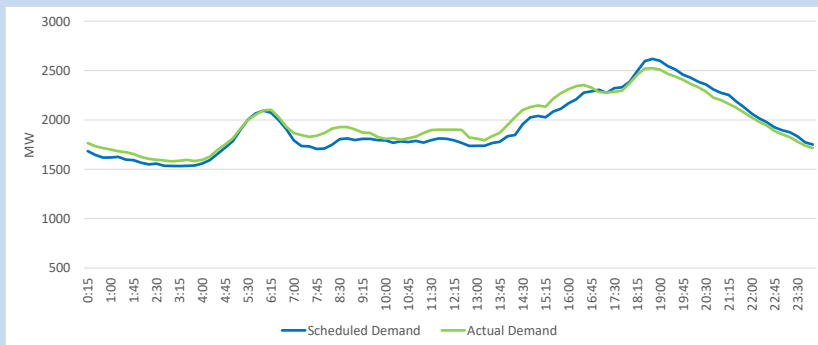
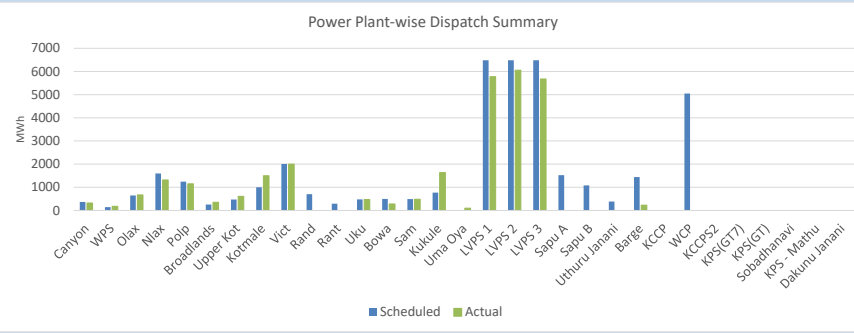


Table 07

Category	Scheduled Dispatch (MWh)	Actual Dispatch (MWh)	Deviation (MWh)
Major Hydro	10,988	11,093	105
CEB Coal	19,440	17,502	(1,938)
CEB Thermal Oil	4,430	228	(4,201)
IPP Thermal Oil	5,048	-	(5,048)
NCRE (Telemetered)	6,473	4,837	(1,636)
Total	46,379	33,661	(12,718)

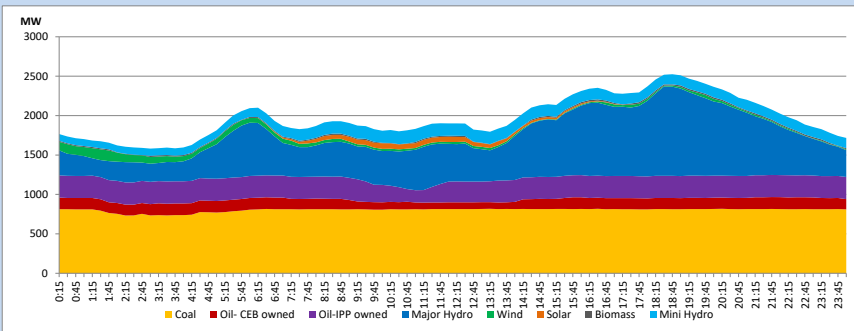
1.12 Power Plant-wise Dispatch Summary

September 27, 2024



1.13 Daily Load Curve

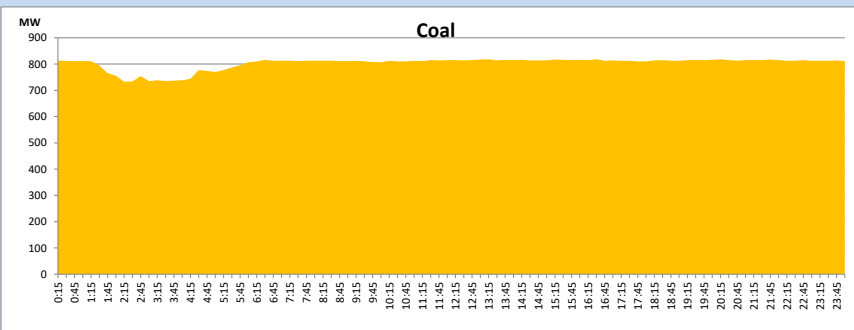
September 27, 2024



Solar and wind data is based on Telemetered Power Stations only

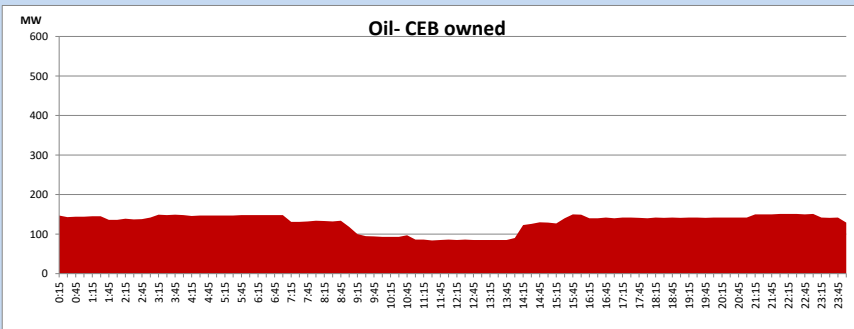
Coal Generation during

September 27, 2024

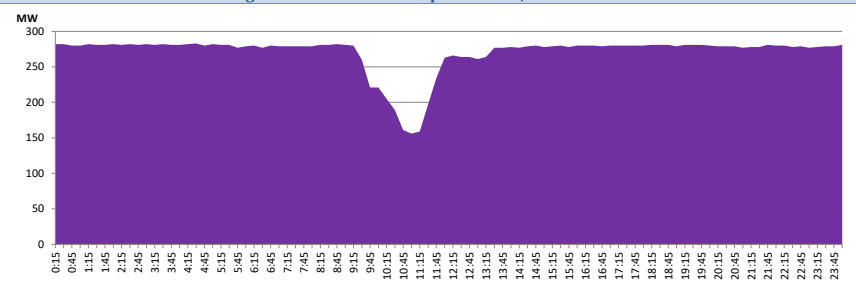


CEB Oil Plant Generation during

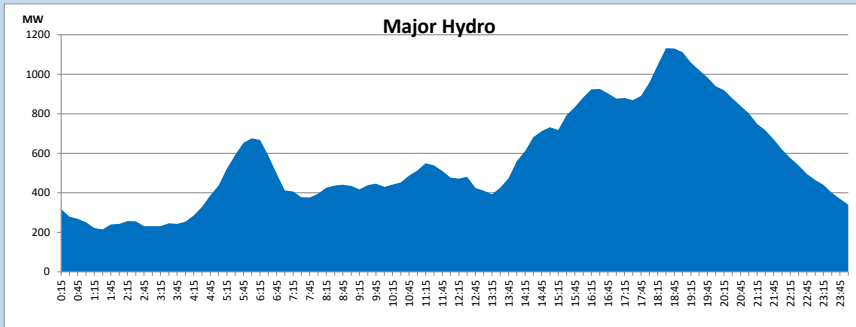
September 27, 2024



IPP Oil Plant Generation during September 27, 2024

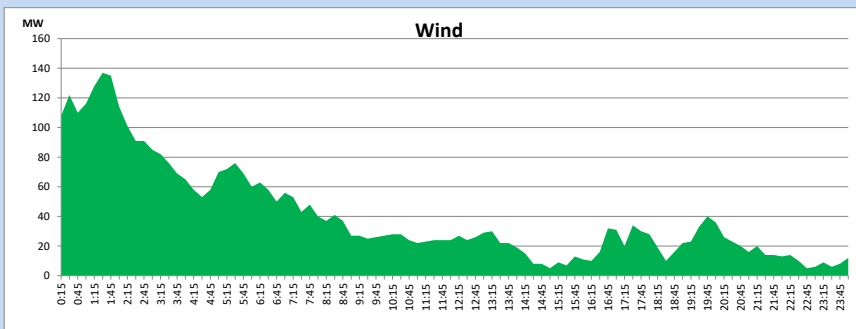


Major Hydro Generation during September 27, 2024



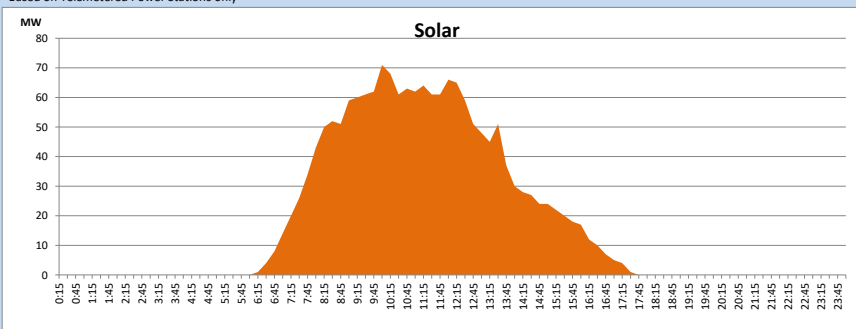
Wind Generation during September 27, 2024

Based on Telemetered Power Stations only



Solar Generation during September 27, 2024

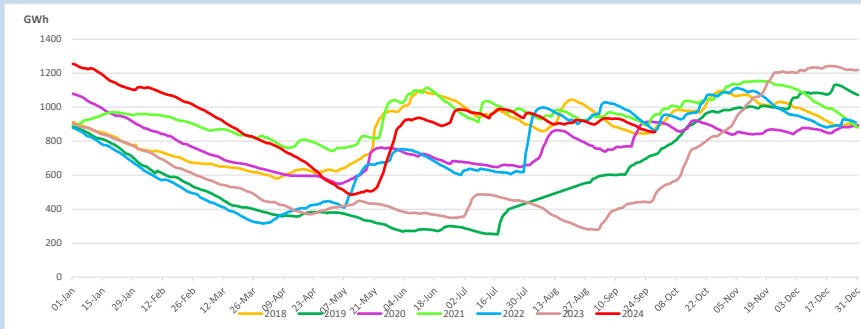
Based on Telemetered Power Stations only



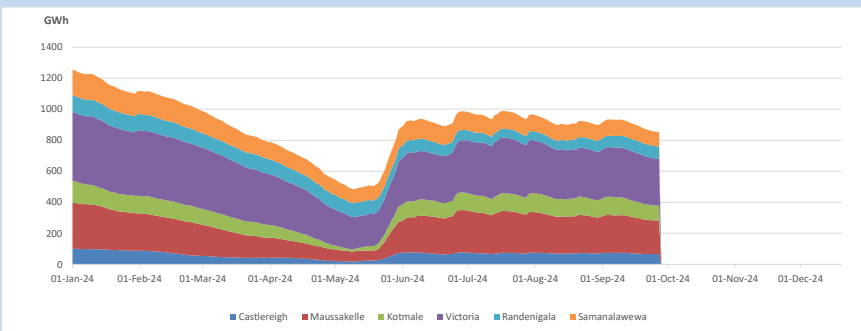
1.14 Major Incidents reported during the day September 27, 2024

- 1). Broadlands unit 02 tripped at 06:33hrs rejecting 15.5MW from the system due to turbine bearing temperature high alarm. Unit 02 resumed generation at 08:35hrs.
- 2). New Galle - Matara cct 01 tripped and A/R from both ends at 07:19hrs due to the operation of Distance Protection.
- 3). Kosgama - Kolonnawa cct tripped only from Kosgama end at 07:26hrs due to the operation of Direct Transfer Trip. The cct was normalized at 07:31hrs.
- 4). Sapugaskanda GSS 132/33kV T/F which was manually turned off due to auxiliary T/F failure on 2022/10/24 was normalized at 18:37hrs.
- 5). Kukule Ganga pond spilling continues to the present hour.

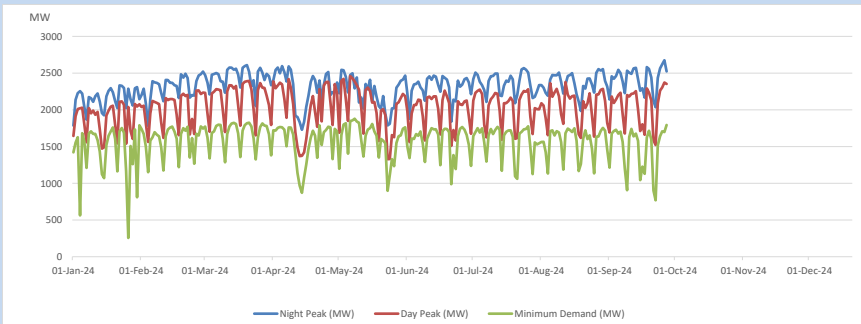
2. Comparison of Total Reservoir Storage Levels with Past Years



3. Variation of Major Hydro Reservoir Levels in the current year (GWh)

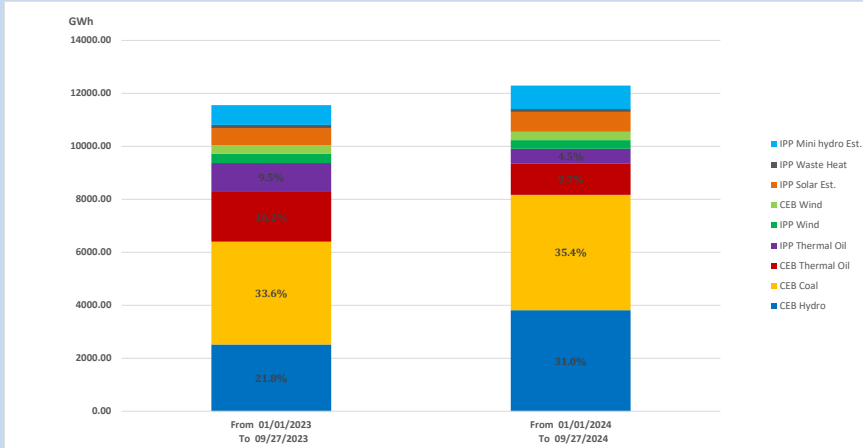


4. Variation of Demand during the current year



The above figures are excluding contribution from roof top solar, non telemetered solar and mini hydro plants

5. Cumulative Dispatch Comparison with Last Year



Cumulative dispatch

From 01/01/2023 To 09/27/2023

11554 GWh

From 01/01/2024 To 09/27/2024

12296 GWh

The above figures are including contribution from roof top solar, non telemetered solar and mini hydro plants)

Unserviced energy due to power cuts has been excluded in 2023

Thermal Power Plant - Fuel types

Table 08

Power Station	Primary Fuel
CEB Thermal	
Sapugaskanda 1	Heavy Fuel
Sapugaskanda 2	Heavy Fuel
Kelanitissa Small Gas Turbines	Auto Diesel
GT 7 - Kelanitissa	Auto Diesel
Kelanitissa CCY	Naphtha or Diesel
Lakvijaya 1	Coal
Lakvijaya 2	Coal
Lakvijaya 3	Coal
Uthuru Janani	Heavy Fuel
Barge CEB	Heavy Fuel
KCCPS -2	Auto Diesel

Power Station	Primary Fuel
Private Thermal	
West Coast	Auto Diesel / Heavy Fuel
Sobadhanavi	Auto Diesel

6. Installed System Capacity

Table 09

	Installed Capacity (MW)
CEB Hydro	1535
CEB Coal	810
CEB Thermal Oil	771
IPP Thermal Oil (West Coast & Sobadhanavi)	490
IPP Wind	163
CEB Wind	100
Mini Hydro	422
IPP Waste heat + Biomass	54
IPP Solar	137
Rooftop Solar (Ordinary)	343
Rooftop Solar (LT Bulk)	289
Rooftop Solar (HT Bulk)	84

Data Source - Monthly Review Report - May 2024 for NCRE installed capacities