

Generation and Reservoirs Statistics

September 24, 2024



PUBLIC UTILITIES COMMISSION OF SRI LANKA

1. Daily Generation Mix

September 24, 2024

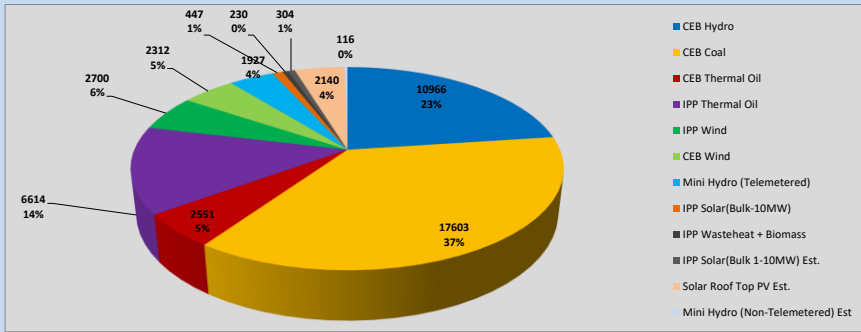


Table 01

	Generation (MWh)
CEB Hydro	10966
CEB Coal	17603
CEB Thermal Oil	2551
IPP Thermal Oil	6614
IPP Wind	2700
CEB Wind	2312
Mini Hydro (Telemetered)	1927
IPP Solar (Bulk)	447
IPP Waste heat + Biomass	230
Total Generation (Excluding estimated figures)	45,350
* Estimated unserved energy	0
* Estimated Mini Hydro (Non telemetered)	116
* Estimated IPP Solar PV (Bulk 1-10MW)	304
* Estimated Solar Roof Top PV	2140
Total Generation (Including estimated figures)	47,910

* Estimated figures of CEB generation report

1.1 Cumulative Dispatch - 2024

Table 02 - Current Month

Category	Dispatch (GWh)	
CEB Hydro	326	30.06%
CEB Coal	419	38.62%
CEB Thermal Oil	51	4.70%
IPP Thermal	23	2.11%
IPP Wind	57	5.24%
CEB Wind	48	4.45%
Mini Hydro *	86	7.90%
IPP Solar *	68	6.31%
IPP Waste heat + BMP	7	0.61%
Total	1,084	

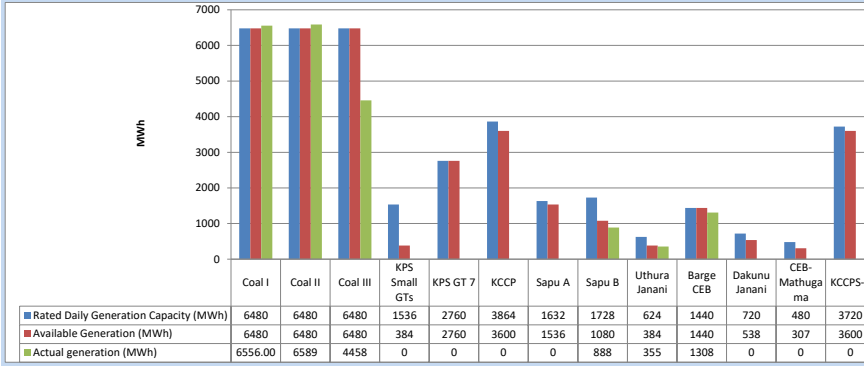
Table 03 - Current Year

Category	Dispatch (GWh)	
CEB Hydro	3,777	31.10%
CEB Coal	4,298	35.38%
CEB Thermal Oil	1,182	9.73%
IPP Thermal	532	4.38%
IPP Wind	320	2.63%
CEB Wind	314	2.58%
Mini Hydro *	879	7.24%
IPP Solar *	742	6.11%
IPP Waste heat	104	0.86%
Total	12,148	

*Including estimated contribution from non telemetered plants

1.2 CEB owned Thermal Plant Dispatch

September 24, 2024

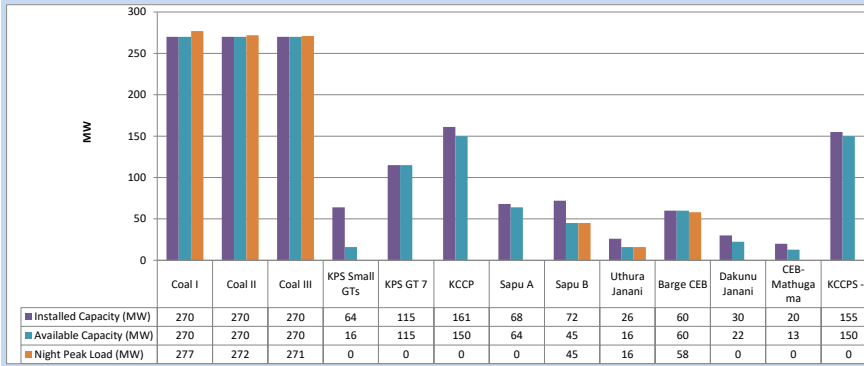


Available Generation is estimated based on plant availability at 6.00am on

September 25, 2024

1.3 CEB owned Thermal Plant Loading at the Night Peak

September 24, 2024

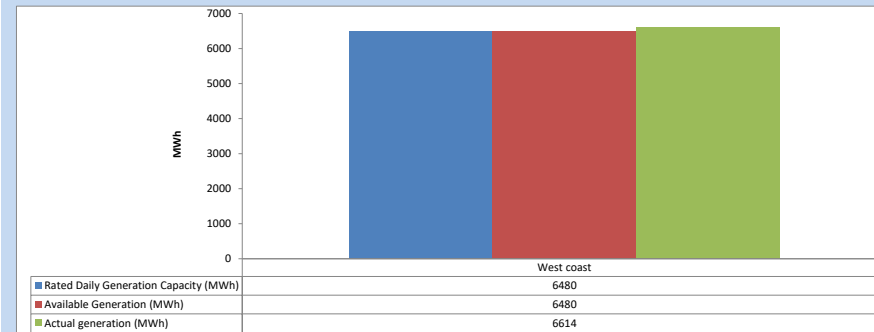


Plant availability is recorded at 6.00 am on

September 25, 2024

1.4 IPP owned Thermal Plant Dispatch

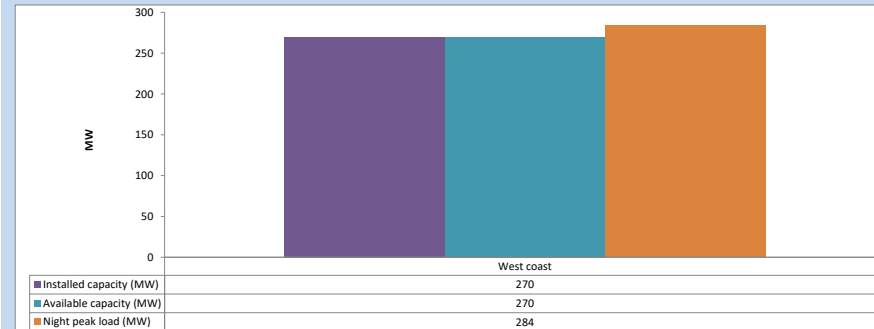
September 24, 2024



Available Generation is estimated based on plant availability at 6.00am on

September 25, 2024

1.5 IPP owned Thermal Plant Loading at the Night Peak

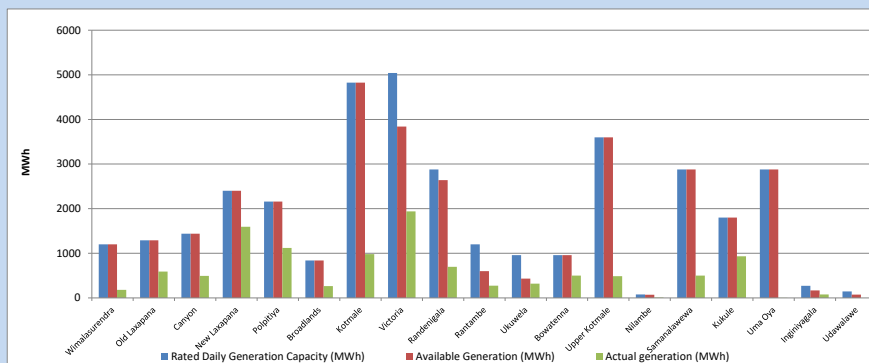


Plant availability is recorded at 6.00 am on

September 25, 2024

1.6 Major Hydro Plant Dispatch

September 24, 2024

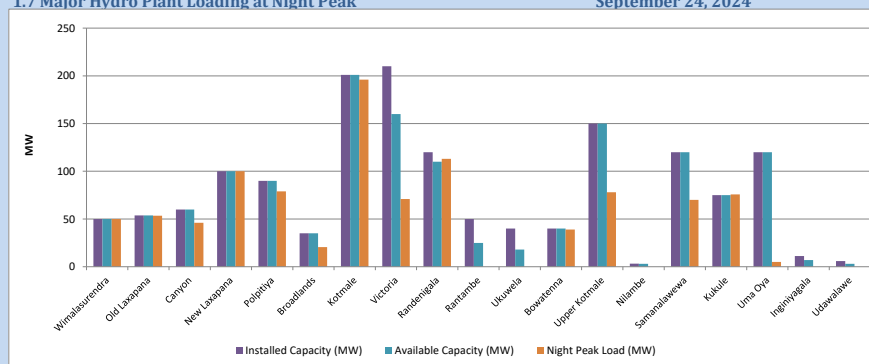


Available Generation is estimated based on plant availability at 6.00am on

September 25, 2024

1.7 Major Hydro Plant Loading at Night Peak

September 24, 2024



Plant availability is recorded at 6.00 am on

September 25, 2024

1.8 Summary of Major Plant performance

September 24, 2024

Table 04

Plant	Maximum Available Total Capacity (MW)	Plant Availability (MW)	Night peak Load (MW)	Plant Dispatch (MWh)
Wimalasurendra	50	50	50	182
Old Laxapana	54	54	53	591
Canyon	60	60	46	494
New Laxapana	100	100	100	1,595
Polpitiya	90	90	79	1,120
Broadlands	35	35	21	264
Kotmale	201	201	196	980
Victoria	210	160	71	1,939
Randenigala	120	110	113	696
Rantambe	50	25	0	275
Ukuwela	40	18	0	320
Bowatenna	40	40	39	501
Upper Kotmale	150	150	78	486
Nilambe	3	3	0	10
Samanalawewa	120	120	70	499
Kukule	75	75	76	934
Uma Oya	120	120	5	3
Inginiyagala	11	7	0	77
Udawalawe	6	3	0	0
Puttalam Coal I	270	270	277	6,556
Puttalam Coal II	270	270	272	6,589
Puttalam Coal III	270	270	271	4,458
KPS Small GTs	64	16	0	0
KPS GT 7	115	115	0	0
KCCP	161	150	0	0
Sapugaskanda A	68	64	0	0
Sapugaskanda B	72	45	45	888
Uthura Janani	26	16	16	355
Barge CEB	60	60	58	1,308
CEB-Hambantota	30	22	0	0
CEB-Mathugama	20	13	0	0
KCCPS -2	155	150	0	0
West Coast	270	270	284	6,614
Sobadhanavi	220	212	0	0
Total	3,606	3,152	2,540	45,350

Note-

Plant availability is the availability recorded at 6 am on

September 25, 2024

1.9 Contribution to the Night Peak in MW

September 24, 2024

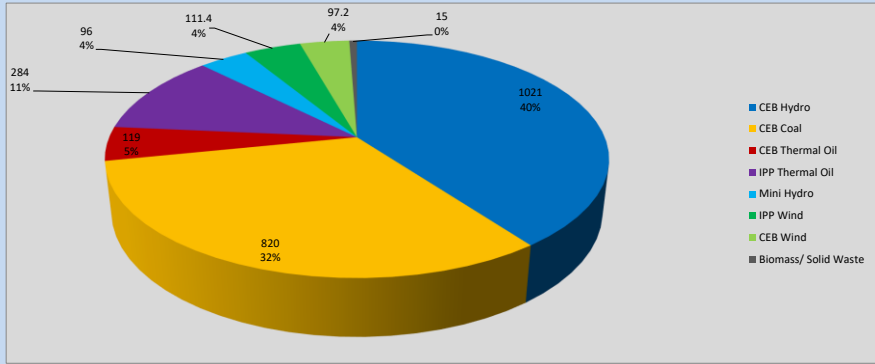


Table 05

CEB Hydro	1021	MW
CEB Coal	820	MW
CEB Thermal Oil	119	MW
IPP Thermal Oil	284	MW
Mini Hydro (Telemetered)	96	MW
IPP Wind	111.4	MW
CEB Wind	97.2	MW
Biomass/ Solid Waste	15	MW

Recorded Peak Demand Data

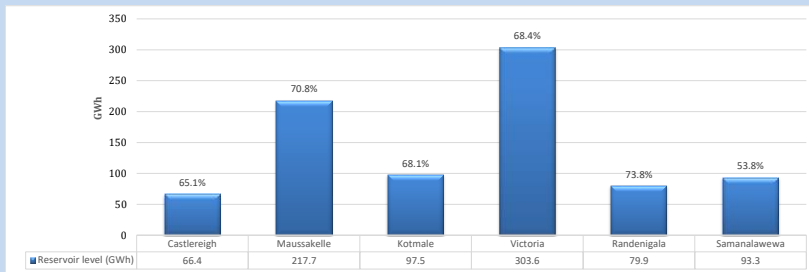
Table 06

Night Peak*	2,564	MW
Day Peak Maximum Demand	2,261	MW
Day Peak Minimum Demand	1,640	MW
Off Peak Minimum Demand	1,465	MW

Above figures are excluding contribution from roof top solar, non telemetered solar and mini hydro plants

1.10 Reservoir Levels -

as at 06.00 Hr on September 25, 2024



Total Reservoir Level
% of Total capacity

858.4 GWh
67.2%

1.11 Day Ahead Planned Demand Vs Actual Demand (Excluding non telemetered data)

September 24, 2024

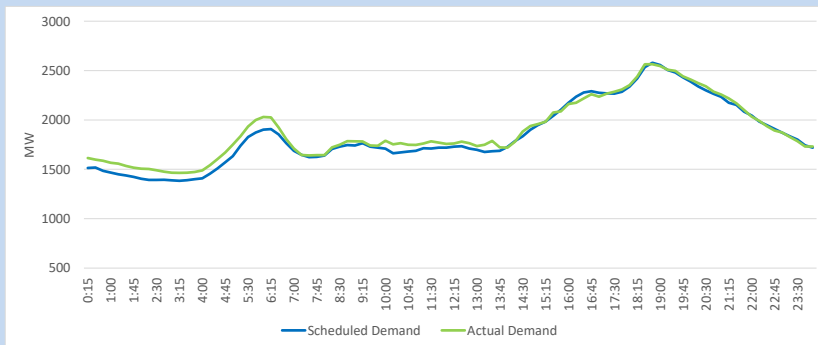
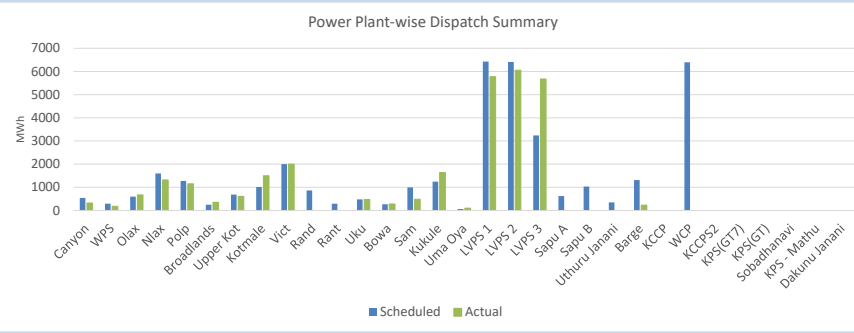


Table 07

Category	Scheduled Dispatch (MWh)	Actual Dispatch (MWh)	Deviation (MWh)
Major Hydro	12,453	11,093	(1,360)
CEB Coal	16,076	17,502	1,426
CEB Thermal Oil	3,317	228	(3,089)
IPP Thermal Oil	6,398	-	(6,398)
NCRE (Telemetered)	6,124	7,591	1,467
Total	44,368	36,415	(7,953)

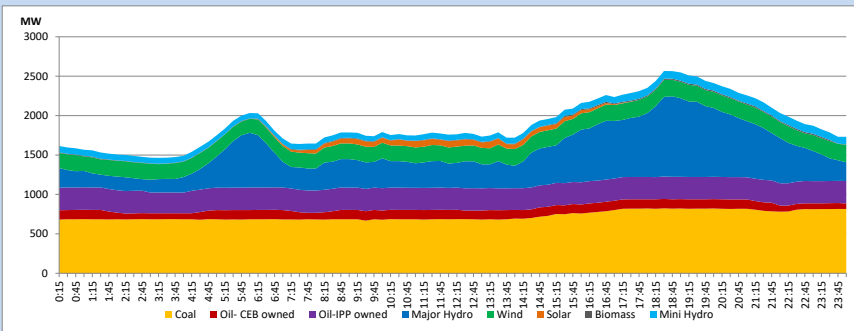
1.12 Power Plant-wise Dispatch Summary

September 24, 2024



1.13 Daily Load Curve

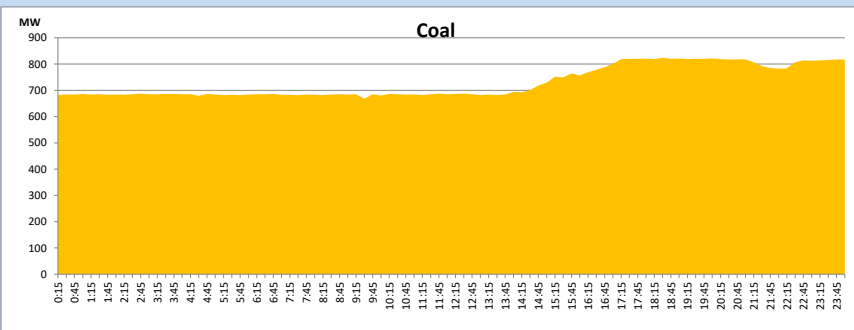
September 24, 2024



Solar and wind data is based on Telemetered Power Stations only

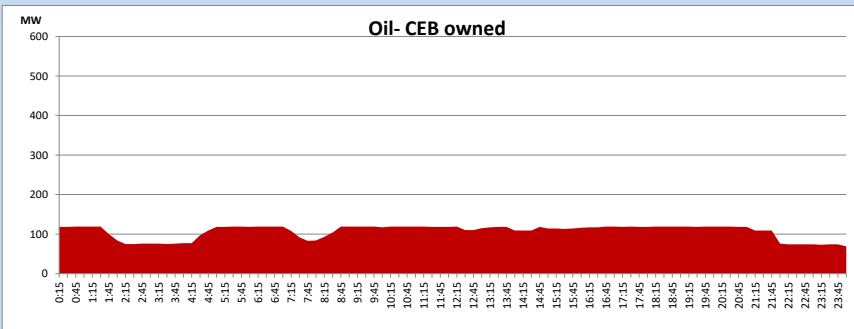
Coal Generation during

September 24, 2024

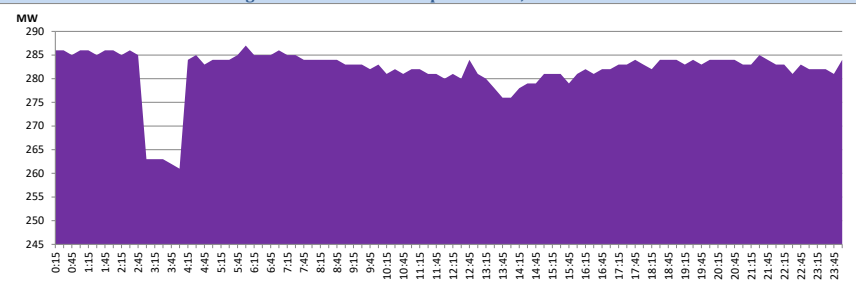


CEB Oil Plant Generation during

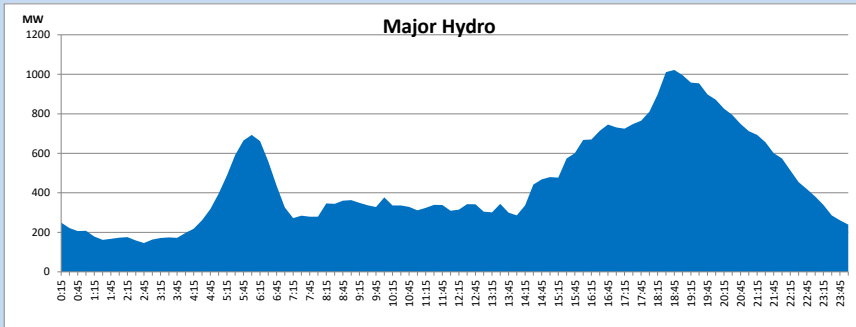
September 24, 2024



IPP Oil Plant Generation during September 24, 2024

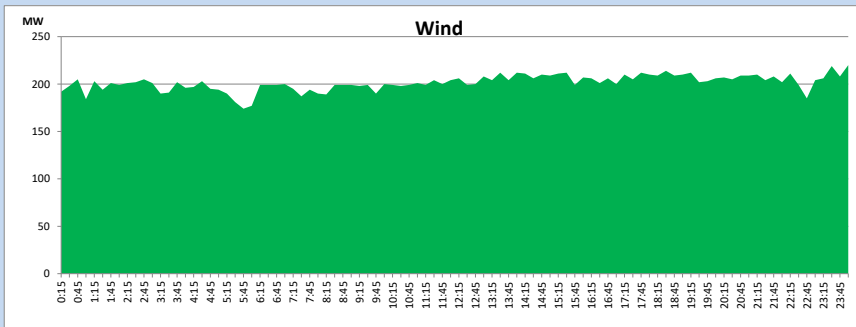


Major Hydro Generation during September 24, 2024



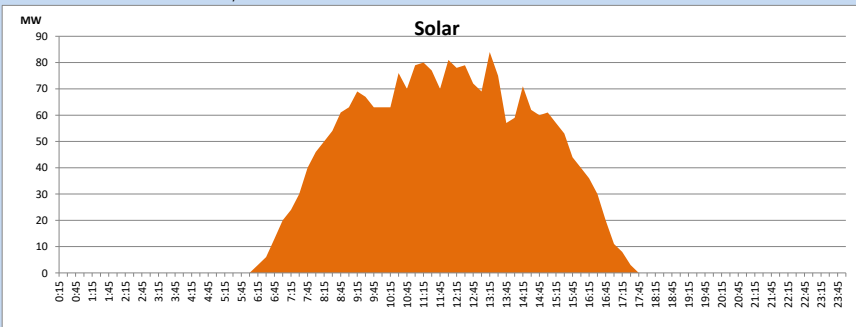
Wind Generation during September 24, 2024

Based on Telemetered Power Stations only



Solar Generation during September 24, 2024

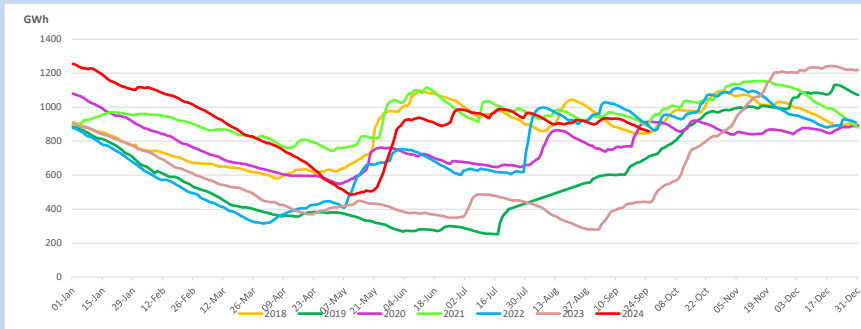
Based on Telemetered Power Stations only



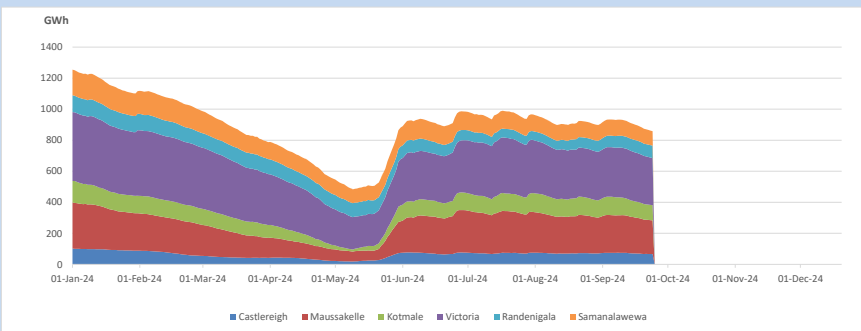
1.14 Major Incidents reported during the day September 24, 2024

- 1) Kolonnawa - Kosgama 132kV cct tripped only from Kolonnawa end at 15:56hrs. Kolonnawa - Kosgama 132kV cct restored at 16:04hrs.
- 2) Ukuwela unit 01 stopped at 16:08hrs to facilitate a dead body search. Ukuwela unit 01 is yet to resume generation.
- 3) Victoria unit 01 tripped at 18:25hrs rejecting 70MW from the system with the indication of Trust bearing temperature high. Victoria unit 01 resumed generation at 19:18hrs.

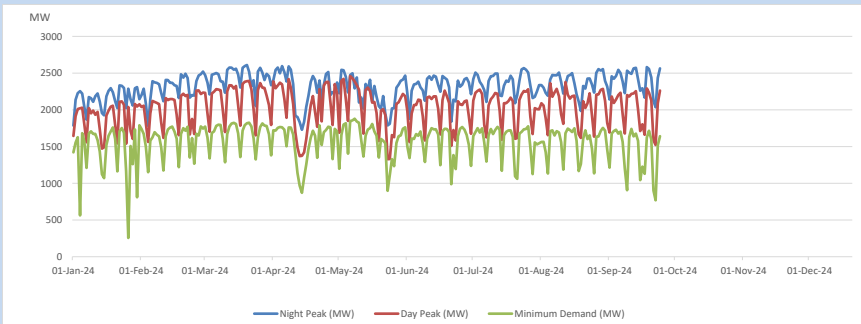
2. Comparison of Total Reservoir Storage Levels with Past Years



3. Variation of Major Hydro Reservoir Levels in the current year (GWh)

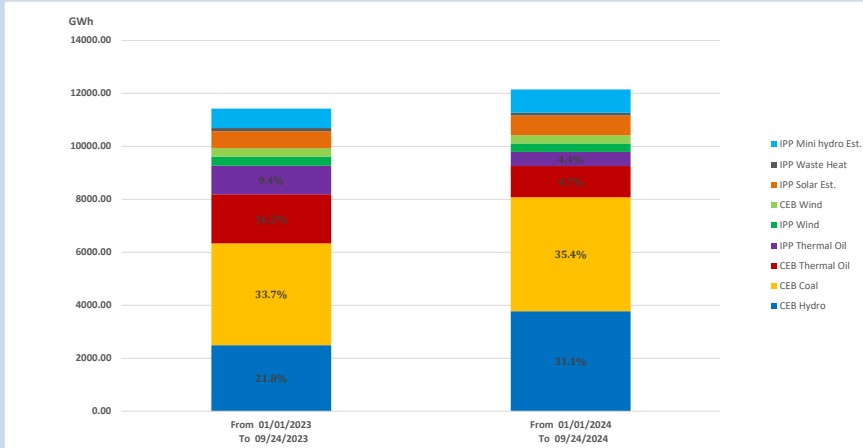


4. Variation of Demand during the current year



The above figures are excluding contribution from roof top solar, non telemetered solar and mini hydro plants

5. Cumulative Dispatch Comparison with Last Year



Cumulative dispatch

From 01/01/2023 To 09/24/2023

11425 GWh

From 01/01/2024 To 09/24/2024

12148 GWh

The above figures are including contribution from roof top solar, non telemetered solar and mini hydro plants)

Unserviced energy due to power cuts has been excluded in 2023

Thermal Power Plant - Fuel types

Table 08

Power Station	Primary Fuel
CEB Thermal	
Sapugaskanda 1	Heavy Fuel
Sapugaskanda 2	Heavy Fuel
Kelanitissa Small Gas Turbines	Auto Diesel
GT 7 - Kelanitissa	Auto Diesel
Kelanitissa CCY	Naphtha or Diesel
Lakvijaya 1	Coal
Lakvijaya 2	Coal
Lakvijaya 3	Coal
Uthuru Janani	Heavy Fuel
Barge CEB	Heavy Fuel
KCCPS -2	Auto Diesel

Power Station	Primary Fuel
Private Thermal	
West Coast	Auto Diesel / Heavy Fuel
Sobadhanavi	Auto Diesel

6. Installed System Capacity

Table 09

	Installed Capacity (MW)
CEB Hydro	1535
CEB Coal	810
CEB Thermal Oil	771
IPP Thermal Oil (West Coast & Sobadhanavi)	490
IPP Wind	163
CEB Wind	100
Mini Hydro	422
IPP Waste heat + Biomass	54
IPP Solar	137
Rooftop Solar (Ordinary)	343
Rooftop Solar (LT Bulk)	289
Rooftop Solar (HT Bulk)	84

Data Source - Monthly Review Report - May 2024 for NCRE installed capacities