

Generation and Reservoirs Statistics

September 22, 2024



PUBLIC UTILITIES COMMISSION OF SRI LANKA

1. Daily Generation Mix

September 22, 2024

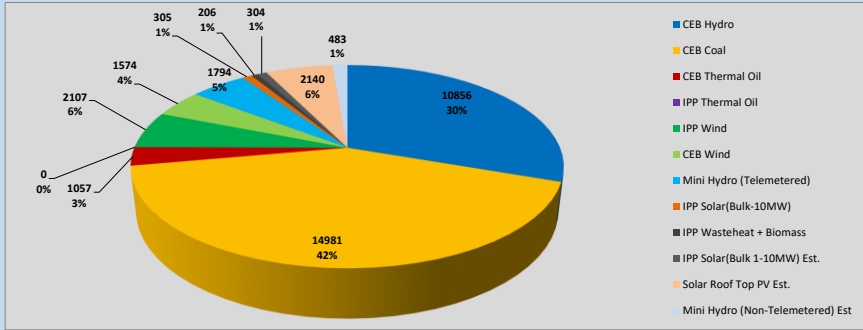


Table 01

	Generation (MWh)
CEB Hydro	10856
CEB Coal	14981
CEB Thermal Oil	1057
IPP Thermal Oil	0
IPP Wind	2107
CEB Wind	1574
Mini Hydro (Telemetered)	1794
IPP Solar (Bulk)	305
IPP Waste heat + Biomass	206
Total Generation (Excluding estimated figures)	32,880
* Estimated unserved energy	0
* Estimated Mini Hydro (Non telemetered)	483
* Estimated IPP Solar PV (Bulk 1-10MW)	304
* Estimated Solar Roof Top PV	2140
Total Generation (Including estimated figures)	35,807

* Estimated figures of CEB generation report

1.1 Cumulative Dispatch - 2024

Table 02 - Current Month

Category	Dispatch (GWh)	
CEB Hydro	303	30.49%
CEB Coal	385	38.75%
CEB Thermal Oil	46	4.64%
IPP Thermal	13	1.36%
IPP Wind	51	5.18%
CEB Wind	44	4.39%
Mini Hydro *	82	8.23%
IPP Solar *	63	6.31%
IPP Waste heat + BMP	6	0.63%
Total	993	

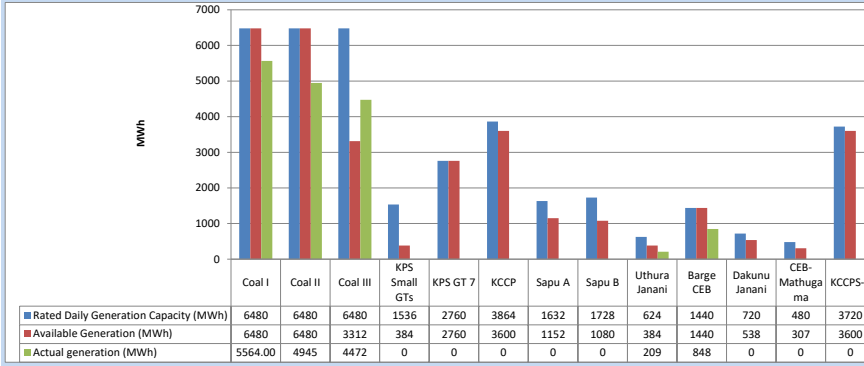
Table 03 - Current Year

Category	Dispatch (GWh)	
CEB Hydro	3,754	31.14%
CEB Coal	4,264	35.36%
CEB Thermal Oil	1,177	9.76%
IPP Thermal	523	4.33%
IPP Wind	314	2.61%
CEB Wind	309	2.56%
Mini Hydro *	875	7.26%
IPP Solar *	737	6.11%
IPP Waste heat	104	0.86%
Total	12,056	

*Including estimated contribution from non telemetered plants

1.2 CEB owned Thermal Plant Dispatch

September 22, 2024

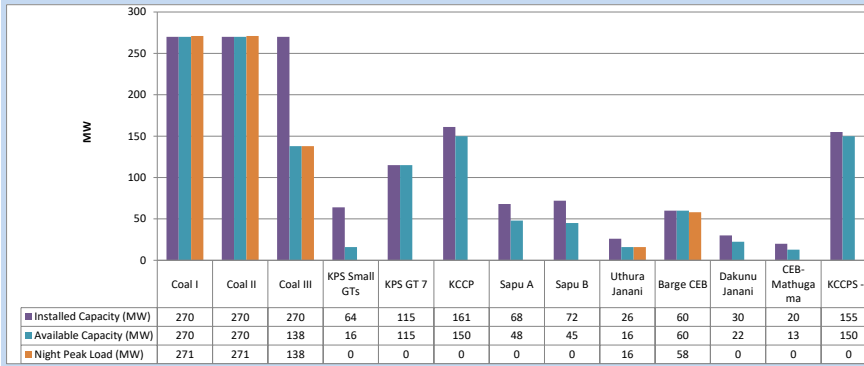


Available Generation is estimated based on plant availability at 6.00am on

September 23, 2024

1.3 CEB owned Thermal Plant Loading at the Night Peak

September 22, 2024

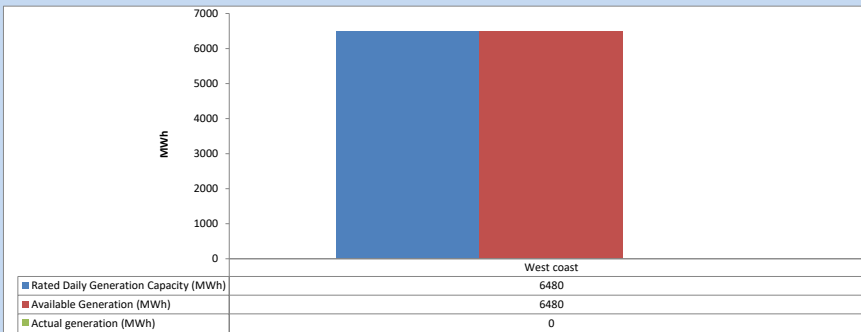


Plant availability is recorded at 6.00 am on

September 23, 2024

1.4 IPP owned Thermal Plant Dispatch

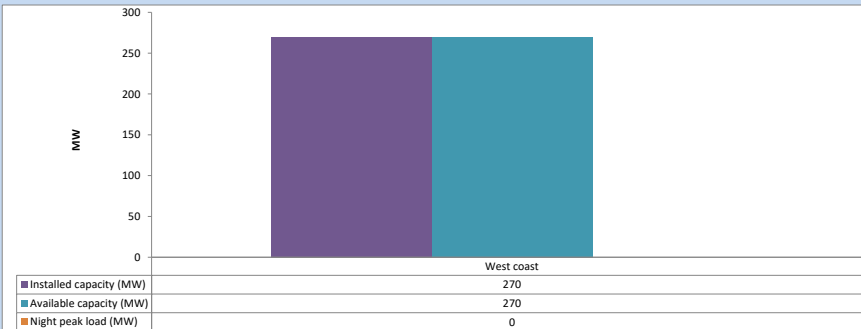
September 22, 2024



Available Generation is estimated based on plant availability at 6.00am on

September 23, 2024

1.5 IPP owned Thermal Plant Loading at the Night Peak

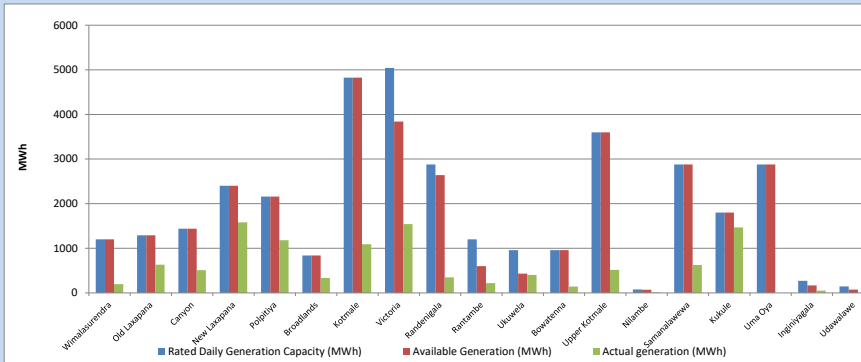


Plant availability is recorded at 6.00 am on

September 23, 2024

1.6 Major Hydro Plant Dispatch

September 22, 2024

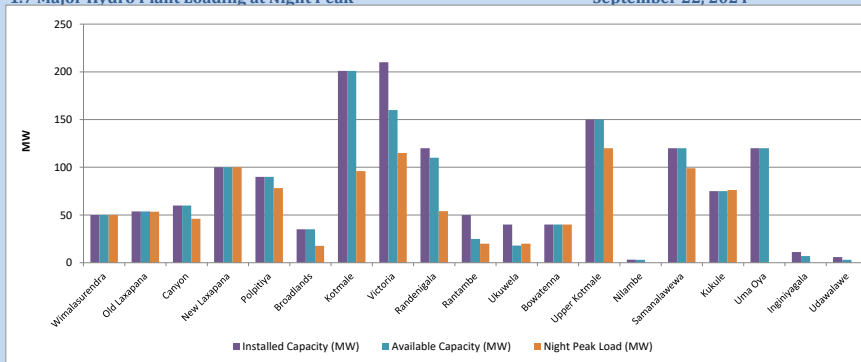


Available Generation is estimated based on plant availability at 6.00am on

September 23, 2024

1.7 Major Hydro Plant Loading at Night Peak

September 22, 2024



Plant availability is recorded at 6.00 am on

September 23, 2024

1.8 Summary of Major Plant performance

September 22, 2024

Table 04

Plant	Maximum Available Total Capacity (MW)	Plant Availability (MW)	Night peak Load (MW)	Plant Dispatch (MWh)
Wimalasurendra	50	50	50	196
Old Laxapana	54	54	53	632
Canyon	60	60	46	511
New Laxapana	100	100	100	1,581
Polpitiya	90	90	78	1,180
Broadlands	35	35	18	335
Kotmale	201	201	96	1,090
Victoria	210	160	115	1,542
Randenigala	120	110	54	350
Rantambe	50	25	20	219
Ukuwela	40	18	20	404
Bowatenna	40	40	40	142
Upper Kotmale	150	150	120	517
Nilambe	3	3	0	12
Samanalawewa	120	120	99	625
Kukule	75	75	76	1,470
Uma Oya	120	120	0	0
Inginiyagala	11	7	0	52
Udawalawe	6	3	0	0
Puttalam Coal I	270	270	271	5,564
Puttalam Coal II	270	270	271	4,945
Puttalam Coal III	270	138	138	4,472
KPS Small GTs	64	16	0	0
KPS GT 7	115	115	0	0
KCCP	161	150	0	0
Sapugaskanda A	68	48	0	0
Sapugaskanda B	72	45	0	0
Uthura Janani	26	16	16	209
Barge CEB	60	60	58	848
CEB-Hambantota	30	22	0	0
CEB-Mathugama	20	13	0	0
KCCPS -2	155	150	0	0
West Coast	270	270	0	0
Sobadhanavi	220	212	0	0
Total	3,606	3,004	2,030	32,882

Note-

Plant availability is the availability recorded at 6 am on

September 23, 2024

1.9 Contribution to the Night Peak in MW

September 22, 2024

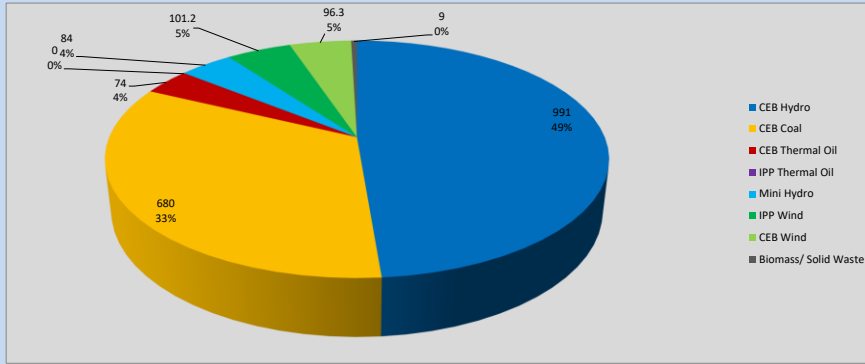


Table 05

CEB Hydro	991	MW
CEB Coal	680	MW
CEB Thermal Oil	74	MW
IPP Thermal Oil	0	MW
Mini Hydro (Telemetered)	84	MW
IPP Wind	101.2	MW
CEB Wind	96.3	MW
Biomass/ Solid Waste	9	MW

Recorded Peak Demand Data

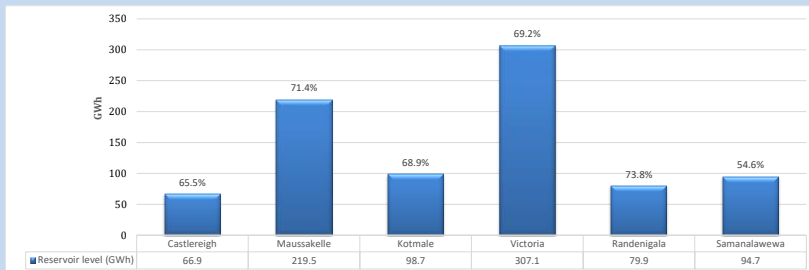
Table 06

Night Peak*	2,035	MW
Day Peak Maximum Demand	1,521	MW
Day Peak Minimum Demand	768	MW
Off Peak Minimum Demand	1,391	MW

Above figures are excluding contribution from roof top solar, non telemetered solar and mini hydro plants

1.10 Reservoir Levels -

as at 06.00 Hr on September 23, 2024



Total Reservoir Level
866.8 GWh
% of Total capacity
67.8%

1.11 Day Ahead Planned Demand Vs Actual Demand (Excluding non telemetered data)

September 22, 2024

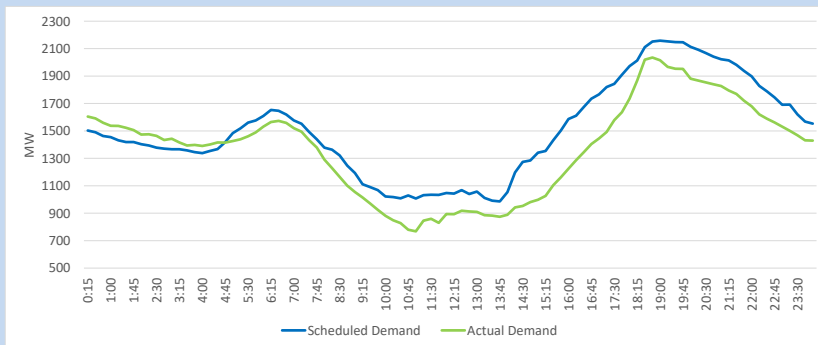
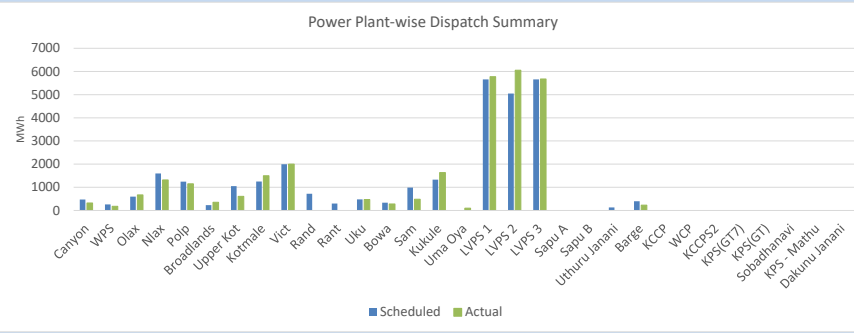


Table 07

Category	Scheduled Dispatch (MWh)	Actual Dispatch (MWh)	Deviation (MWh)
Major Hydro	12,871	11,093	(1,778)
CEB Coal	16,363	17,502	1,140
CEB Thermal Oil	530	228	(301)
IPP Thermal Oil	-	-	-
IPP Wind (Telemetered)	6,351	6,064	(287)
Total	36,115	34,888	-1,227

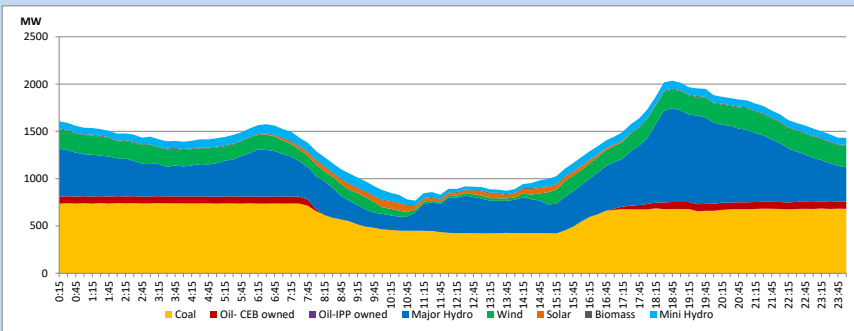
1.12 Power Plant-wise Dispatch Summary

September 22, 2024



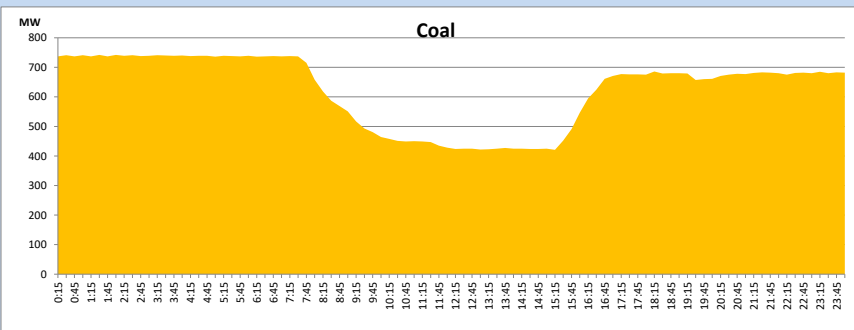
1.13 Daily Load Curve

September 22, 2024



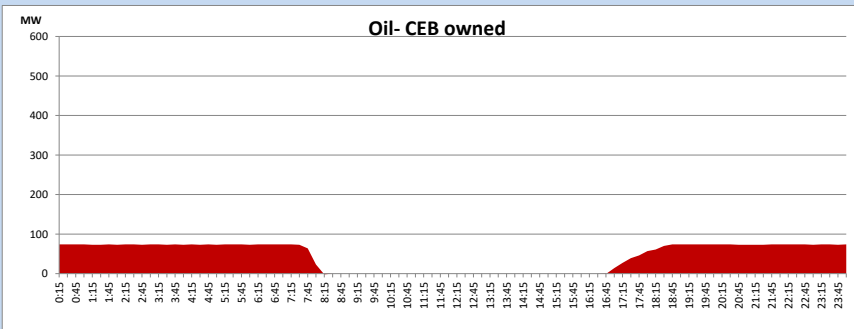
Coal Generation during

September 22, 2024

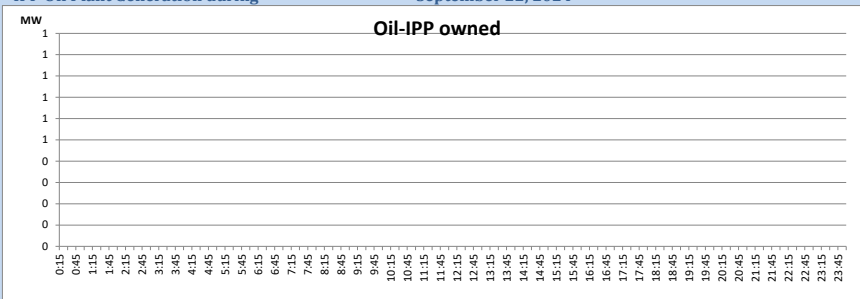


CEB Oil Plant Generation during

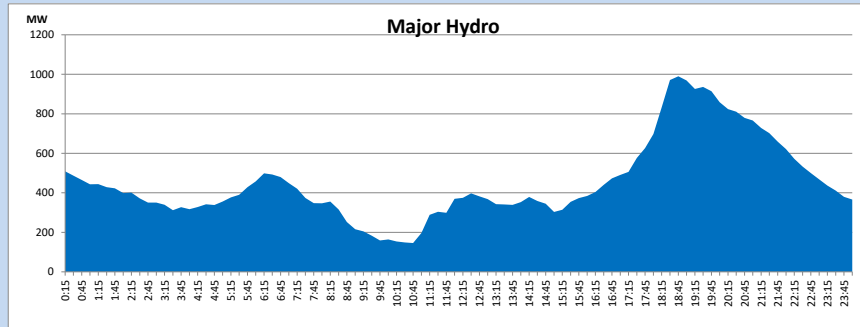
September 22, 2024



IPP Oil Plant Generation during September 22, 2024

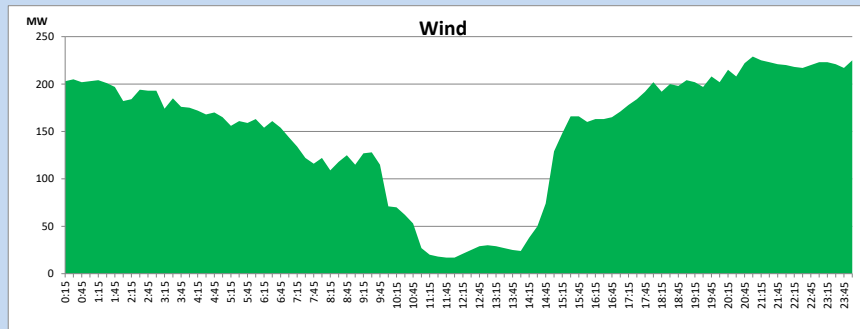


Major Hydro Generation during September 22, 2024



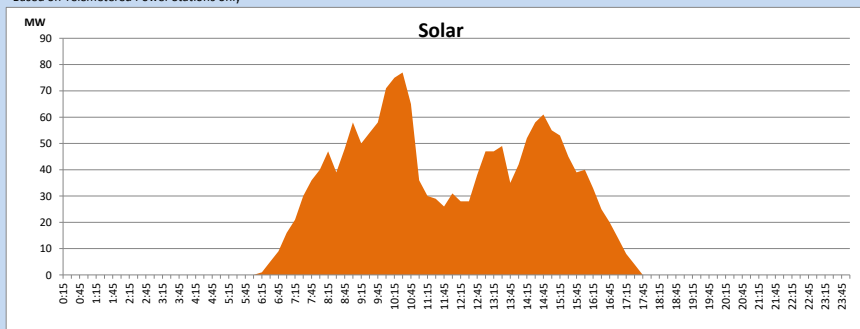
Wind Generation during September 22, 2024

Based on Telemetered Power Stations only



Solar Generation during September 22, 2024

Based on Telemetered Power Stations only

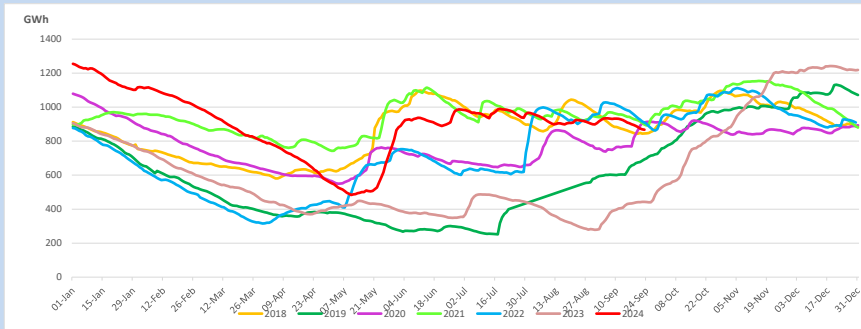


1.14 Major Incidents reported during the day September 22, 2024

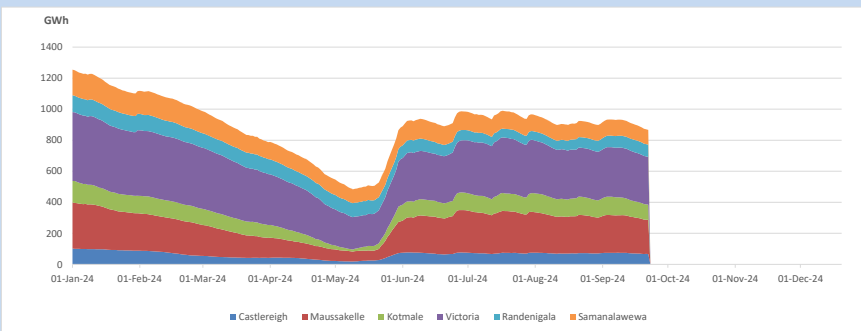
1) Kappalthurai - Trincomalee 132kV cct tripped from both ends at 12:37hrs due to the operation of distance protection. Subsequently, New Anuradhapura - Trincomalee 132kV cct tripped from both ends at 12:39hrs due to the operation of distance protection, causing Trincomalee GSS to be dead. New Anuradhapura - Trincomalee 132kV cct was normalized at 12:50hrs. Trincomalee GSS and its all affected 33kV feeders were normalized by 12:55hrs via New Anuradhapura - Trincomalee 132kV cct. Kappalthurai - Trincomalee 132kV cct was normalized at 13:10 hrs.

2) NCRE (Non-Conventional Renewable Energy) generation was curtailed appropriately to maintain system stability during the daytime, due to unexpected low demand, as the island-wide curfew was extended until 12 noon.

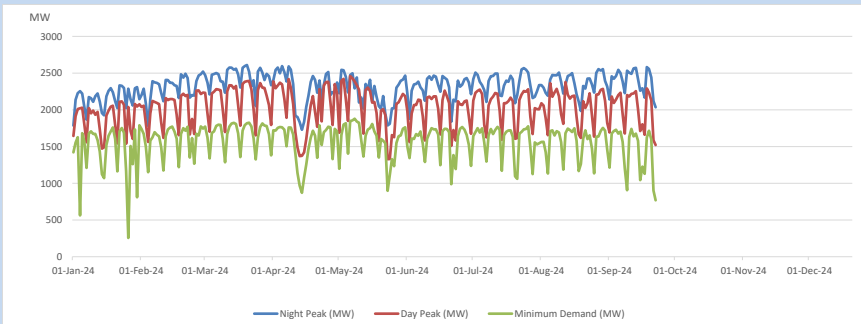
2. Comparison of Total Reservoir Storage Levels with Past Years



3. Variation of Major Hydro Reservoir Levels in the current year (GWh)

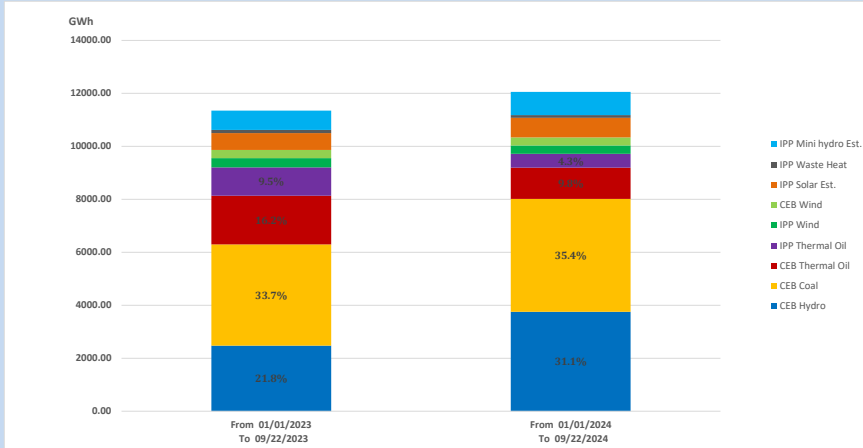


4. Variation of Demand during the current year



The above figures are excluding contribution from roof top solar, non telemetered solar and mini hydro plants

5. Cumulative Dispatch Comparison with Last Year



Cumulative dispatch

From 01/01/2023 To 09/22/2023

11350 GWh

From 01/01/2024 To 09/22/2024

12056 GWh

The above figures are including contribution from roof top solar, non telemetered solar and mini hydro plants)

Unserviced energy due to power cuts has been excluded in 2023

Thermal Power Plant - Fuel types

Table 08

Power Station	Primary Fuel
CEB Thermal	
Sapugaskanda 1	Heavy Fuel
Sapugaskanda 2	Heavy Fuel
Kelanitissa Small Gas Turbines	Auto Diesel
GT 7 - Kelanitissa	Auto Diesel
Kelanitissa CCY	Naphtha or Diesel
Lakvijaya 1	Coal
Lakvijaya 2	Coal
Lakvijaya 3	Coal
Uthuru Janani	Heavy Fuel
Barge CEB	Heavy Fuel
KCCPS -2	Auto Diesel

Power Station	Primary Fuel
Private Thermal	
West Coast	Auto Diesel / Heavy Fuel
Sobadhanavi	Auto Diesel

6. Installed System Capacity

Table 09

	Installed Capacity (MW)
CEB Hydro	1535
CEB Coal	810
CEB Thermal Oil	771
IPP Thermal Oil (West Coast & Sobadhanavi)	490
IPP Wind	163
CEB Wind	100
Mini Hydro	422
IPP Waste heat + Biomass	54
IPP Solar	137
Rooftop Solar (Ordinary)	343
Rooftop Solar (LT Bulk)	289
Rooftop Solar (HT Bulk)	84

Data Source - Monthly Review Report - May 2024 for NCRE installed capacities