

Generation and Reservoirs Statistics

September 21, 2024



PUBLIC UTILITIES COMMISSION OF SRI LANKA

1. Daily Generation Mix

September 21, 2024

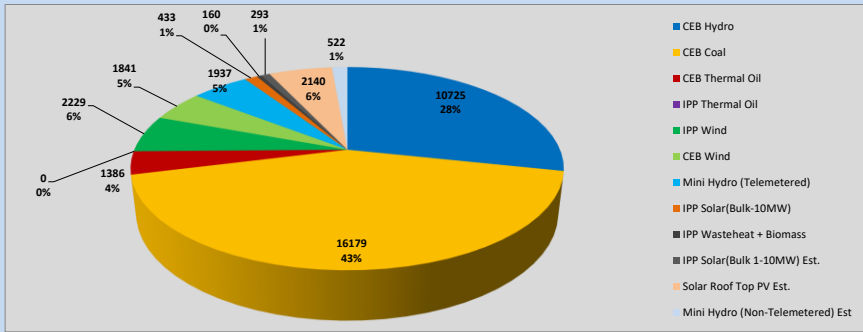


Table 01

	Generation (MWh)
CEB Hydro	10725
CEB Coal	16179
CEB Thermal Oil	1386
IPP Thermal Oil	0
IPP Wind	2229
CEB Wind	1841
Mini Hydro (Telemetered)	1937
IPP Solar (Bulk)	433
IPP Waste heat + Biomass	160
Total Generation (Excluding estimated figures)	34,890
* Estimated unserved energy	0
* Estimated Mini Hydro (Non telemetered)	522
* Estimated IPP Solar PV (Bulk 1-10MW)	293
* Estimated Solar Roof Top PV	2140
Total Generation (Including estimated figures)	37,845

* Estimated figures of CEB generation report

1.1 Cumulative Dispatch - 2024

Table 02 - Current Month

Category	Dispatch (GWh)	
CEB Hydro	292	30.50%
CEB Coal	370	38.64%
CEB Thermal Oil	45	4.71%
IPP Thermal	13	1.41%
IPP Wind	49	5.16%
CEB Wind	42	4.39%
Mini Hydro *	79	8.31%
IPP Solar *	60	6.26%
IPP Waste heat + BMP	6	0.63%
Total	957	

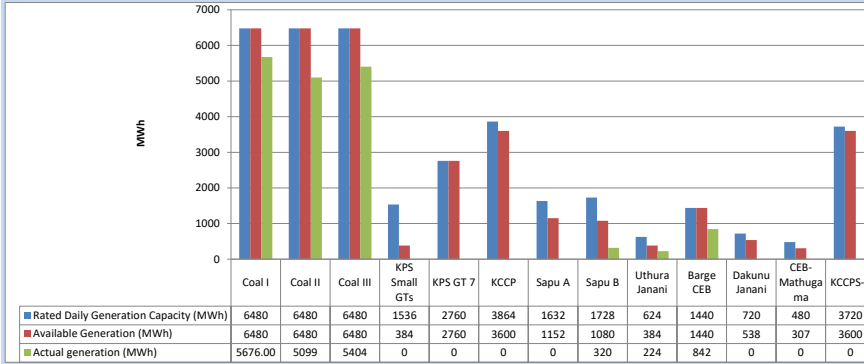
Table 03 - Current Year

Category	Dispatch (GWh)	
CEB Hydro	3,743	31.14%
CEB Coal	4,249	35.34%
CEB Thermal Oil	1,176	9.78%
IPP Thermal	523	4.35%
IPP Wind	312	2.60%
CEB Wind	308	2.56%
Mini Hydro *	873	7.26%
IPP Solar *	734	6.11%
IPP Waste heat	104	0.86%
Total	12,020	

*Including estimated contribution from non telemetered plants

1.2 CEB owned Thermal Plant Dispatch

September 21, 2024

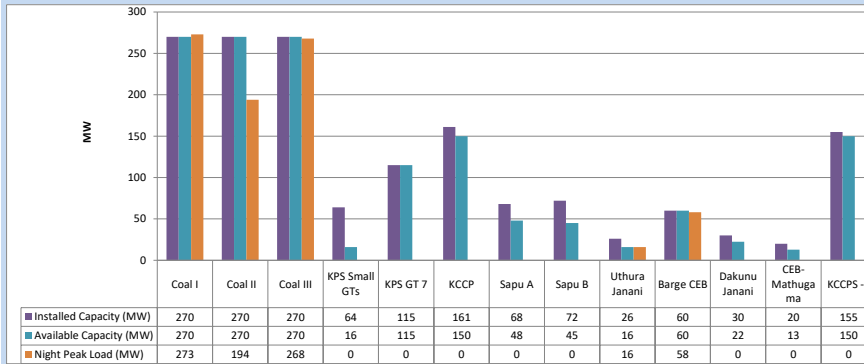


Available Generation is estimated based on plant availability at 6.00am on

September 22, 2024

1.3 CEB owned Thermal Plant Loading at the Night Peak

September 21, 2024

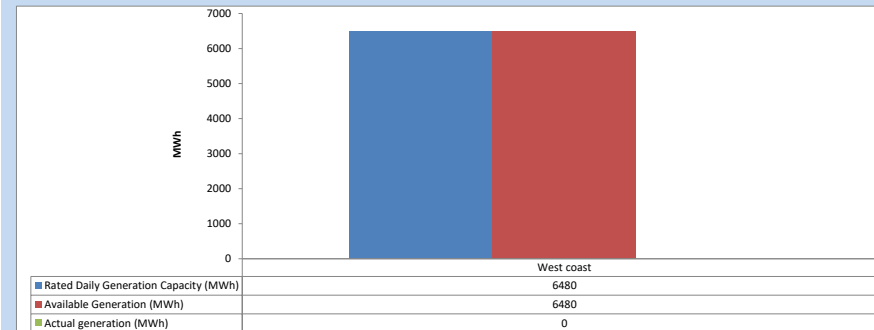


Plant availability is recorded at 6.00 am on

September 22, 2024

1.4 IPP owned Thermal Plant Dispatch

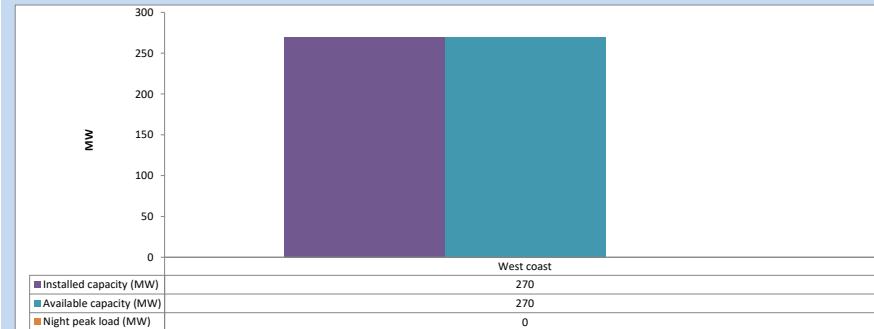
September 21, 2024



Available Generation is estimated based on plant availability at 6.00am on

September 22, 2024

1.5 IPP owned Thermal Plant Loading at the Night Peak

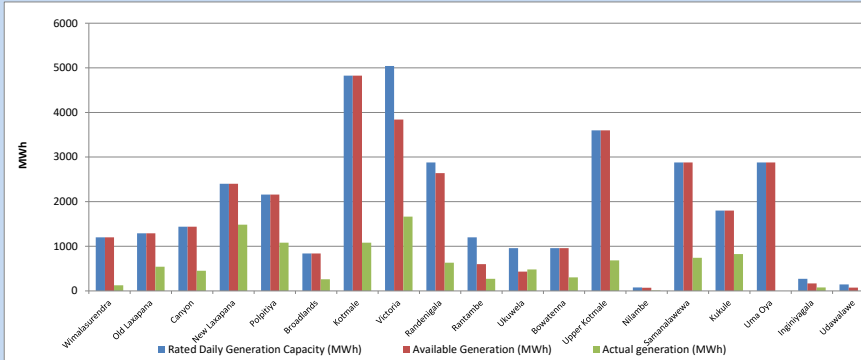


Plant availability is recorded at 6.00 am on

September 22, 2024

1.6 Major Hydro Plant Dispatch

September 21, 2024

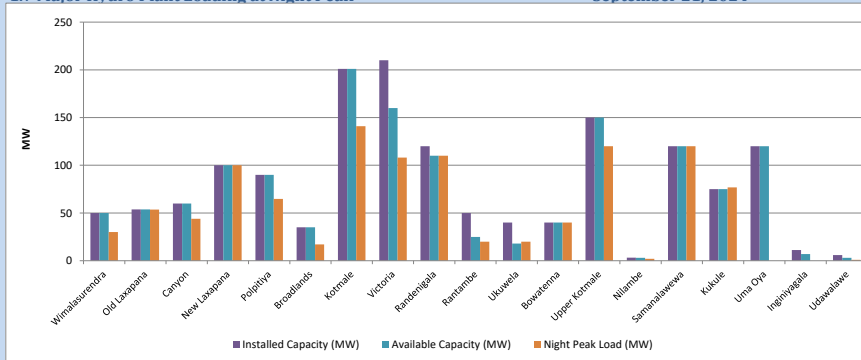


Available Generation is estimated based on plant availability at 6.00am on

September 22, 2024

1.7 Major Hydro Plant Loading at Night Peak

September 21, 2024



Plant availability is recorded at 6.00 am on

September 22, 2024

1.8 Summary of Major Plant performance

September 21, 2024

Table 04

Plant	Maximum Available Total Capacity (MW)	Plant Availability (MW)	Night peak Load (MW)	Plant Dispatch (MWh)
Wimalasurendra	50	50	30	127
Old Laxapana	54	54	54	542
Canyon	60	60	44	453
New Laxapana	100	100	100	1,485
Polpitiya	90	90	65	1,080
Broadlands	35	35	17	260
Kotmale	201	201	141	1,080
Victoria	210	160	108	1,665
Randenigala	120	110	110	634
Rantambe	50	25	20	272
Ukuwela	40	18	20	482
Bowatenna	40	40	40	303
Upper Kotmale	150	150	120	684
Nilambe	3	3	2	11
Samanalawewa	120	120	120	744
Kukule	75	75	77	827
Uma Oya	120	120	0	0
Inginiyagala	11	7	0	78
Udawalawe	6	3	1	0
Puttalam Coal I	270	270	273	5,676
Puttalam Coal II	270	270	194	5,099
Puttalam Coal III	270	270	268	5,404
KPS Small GTs	64	16	0	0
KPS GT 7	115	115	0	0
KCCP	161	150	0	0
Sapugaskanda A	68	48	0	0
Sapugaskanda B	72	45	0	320
Uthura Janani	26	16	16	224
Barge CEB	60	60	58	842
CEB-Hambantota	30	22	0	0
CEB-Mathugama	20	13	0	0
KCCPS -2	155	150	0	0
West Coast	270	270	0	0
Sobadhanavi	220	212	0	0
Total	3,606	3,136	2,115	34,892

Note-

Plant availability is the availability recorded at 6 am on

September 22, 2024

1.9 Contribution to the Night Peak in MW

September 21, 2024

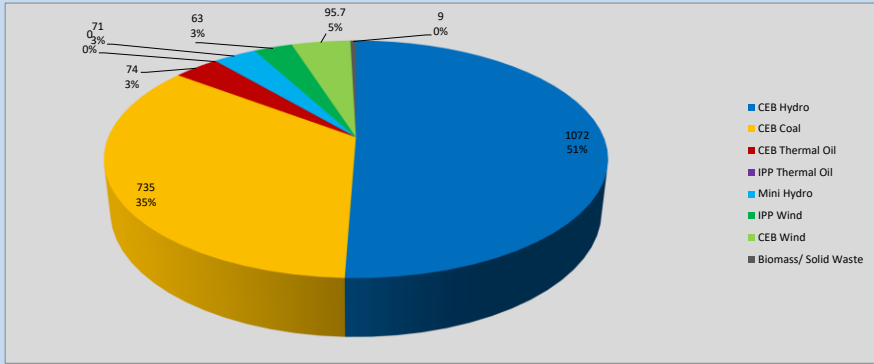


Table 05

CEB Hydro	1072	MW
CEB Coal	735	MW
CEB Thermal Oil	74	MW
IPP Thermal Oil	0	MW
Mini Hydro (Telemetered)	71	MW
IPP Wind	63	MW
CEB Wind	95.7	MW
Biomass/ Solid Waste	9	MW

Recorded Peak Demand Data

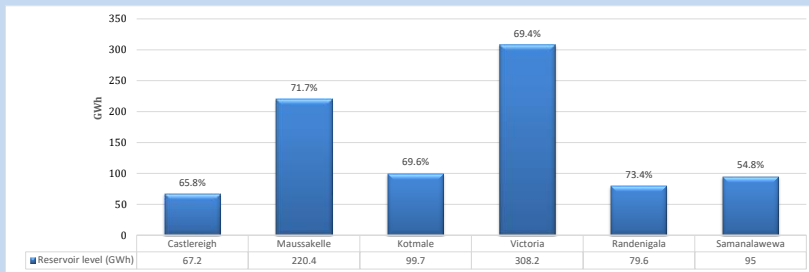
Table 06

Night Peak*	2,119	MW
Day Peak Maximum Demand	1,585	MW
Day Peak Minimum Demand	901	MW
Off Peak Minimum Demand	1,432	MW

Above figures are excluding contribution from roof top solar, non telemetered solar and mini hydro plants

1.10 Reservoir Levels -

as at 06.00 Hr on September 22, 2024



Total Reservoir Level
870.1 GWh
% of Total capacity
68.0%

1.11 Day Ahead Planned Demand Vs Actual Demand (Excluding non telemetered data)

September 21, 2024

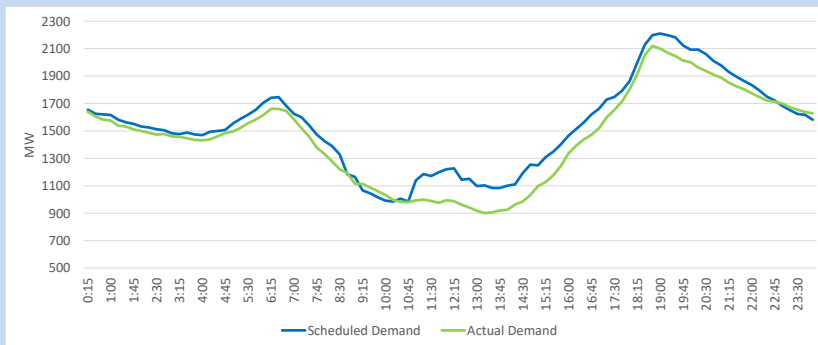
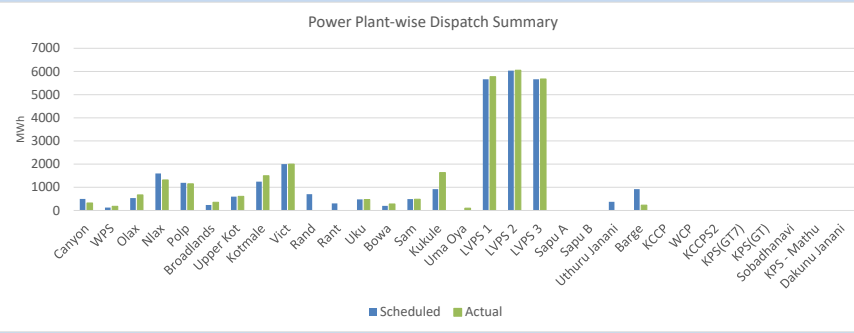


Table 07

Category	Scheduled Dispatch (MWh)	Actual Dispatch (MWh)	Deviation (MWh)
Major Hydro	11,125	11,093	(32)
CEB Coal	17,360	17,502	142
CEB Thermal Oil	1,296	228	(1,067)
IPP Thermal Oil	-	-	-
NCRE (Telemetered)	7,028	6,638	(390)
Total	36,809	35,462	-1347

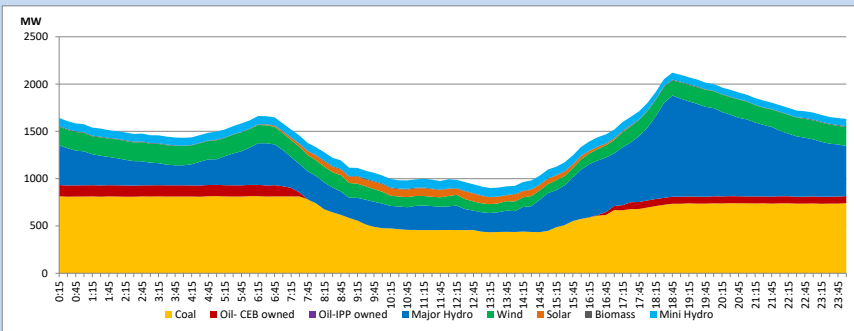
1.12 Power Plant-wise Dispatch Summary

September 21, 2024



1.13 Daily Load Curve

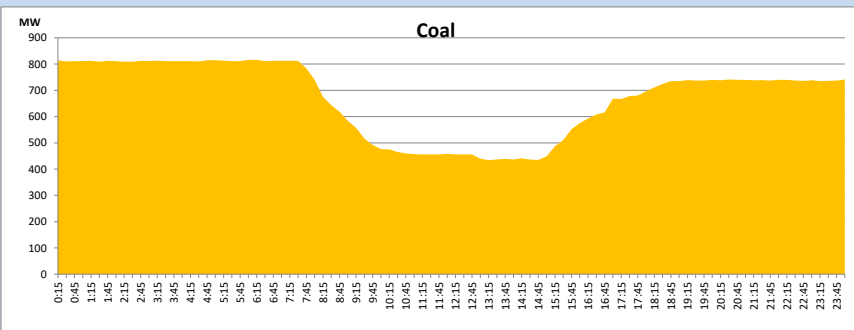
September 21, 2024



Solar and wind data is based on Telemetered Power Stations only

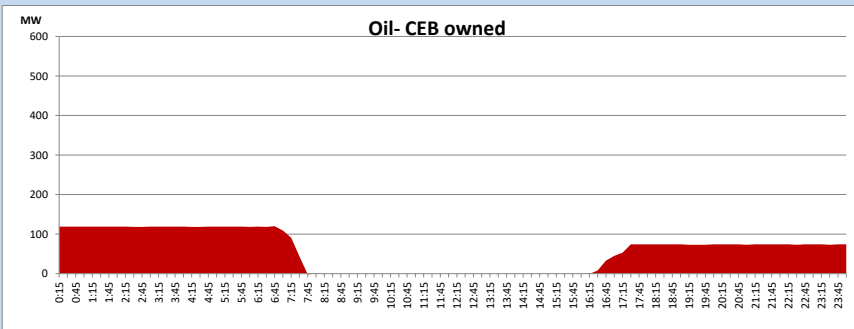
Coal Generation during

September 21, 2024

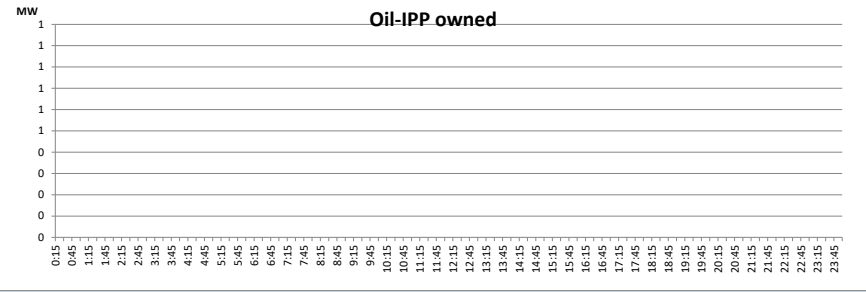


CEB Oil Plant Generation during

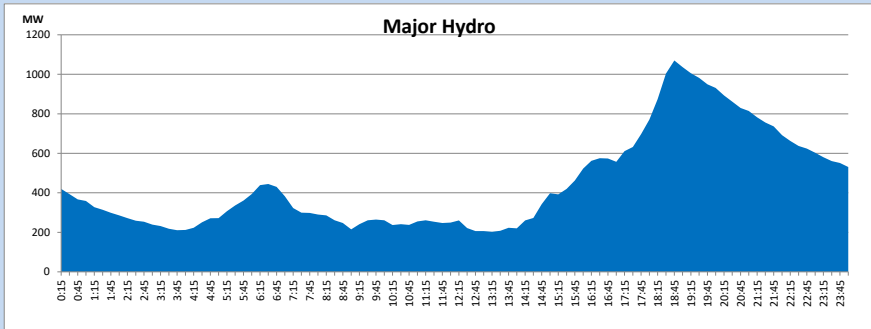
September 21, 2024



IPP Oil Plant Generation during September 21, 2024

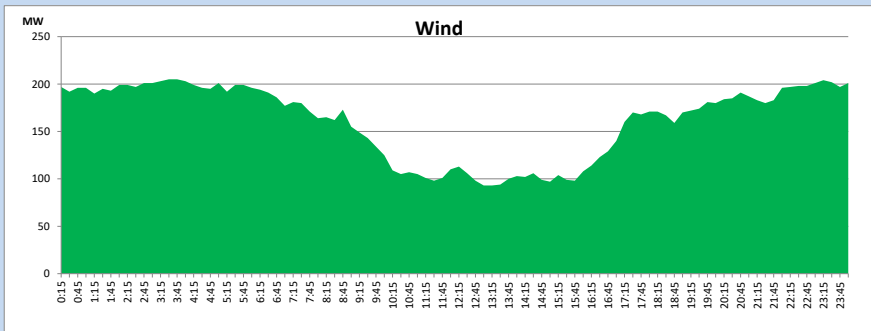


Major Hydro Generation during September 21, 2024



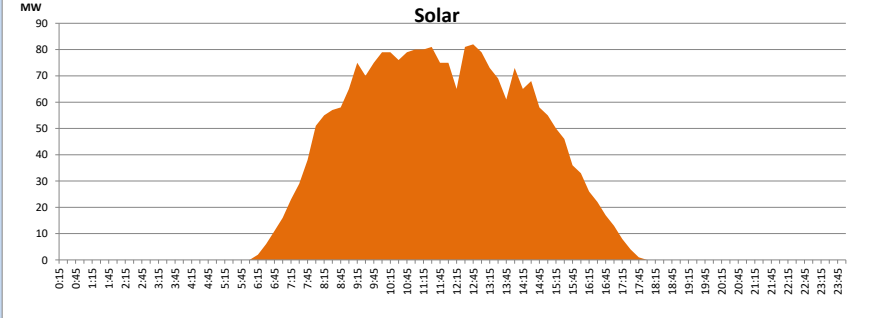
Wind Generation during September 21, 2024

Based on Telemetered Power Stations only



Solar Generation during September 21, 2024

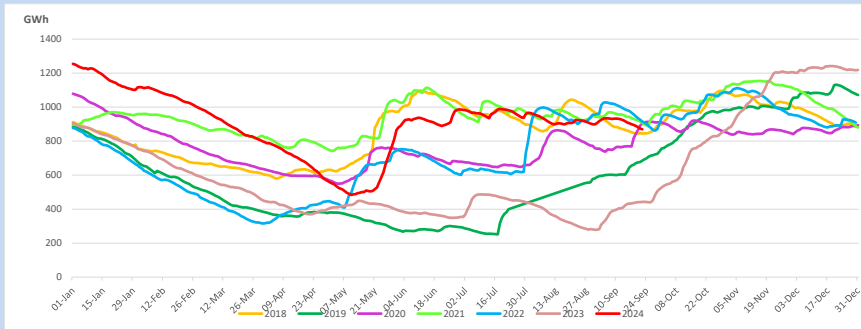
Based on Telemetered Power Stations only



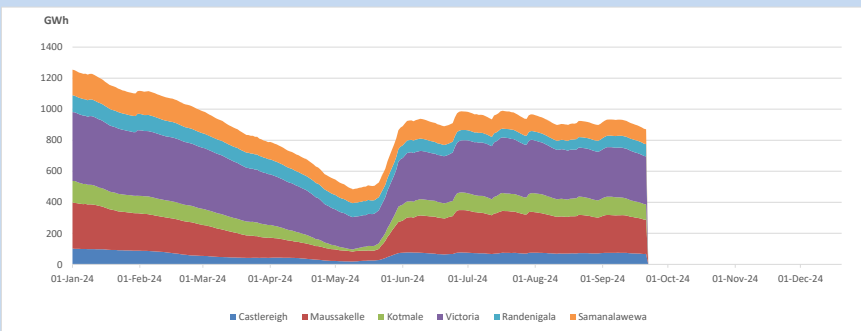
1.14 Major Incidents reported during the day September 21, 2024

- 1) WPS Unit 01 tripped at 15:33hrs with an indication of lower guide bearing cooling water flow too low, rejecting 5MW from the system. WPS Unit 01 resumed generation at 16:00hrs.

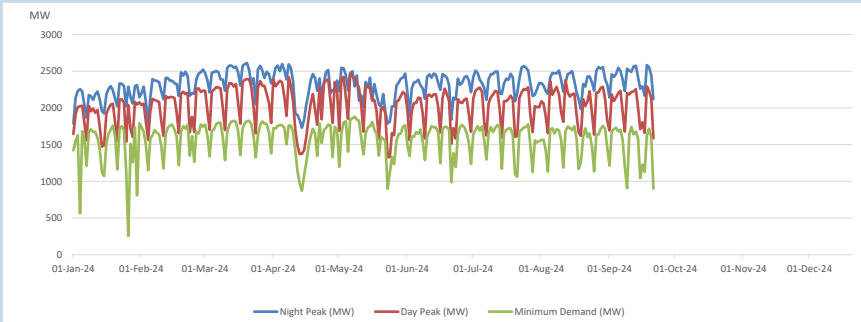
2. Comparison of Total Reservoir Storage Levels with Past Years



3. Variation of Major Hydro Reservoir Levels in the current year (GWh)

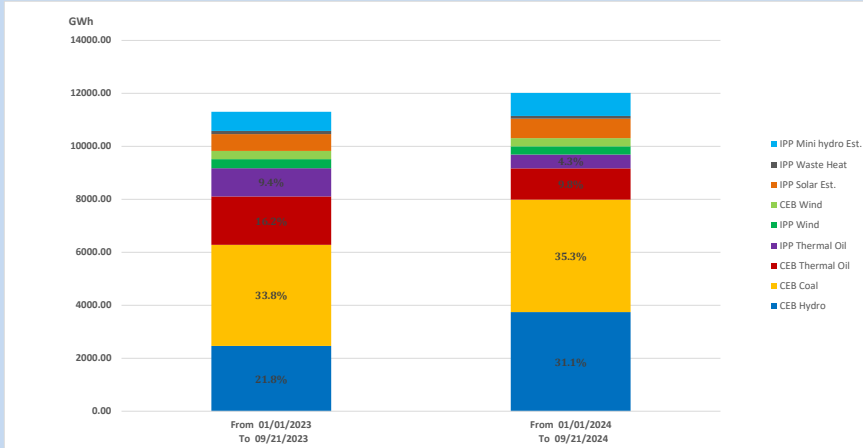


4. Variation of Demand during the current year



The above figures are excluding contribution from roof top solar, non telemetered solar and mini hydro plants

5. Cumulative Dispatch Comparison with Last Year



Cumulative dispatch

From 01/01/2023 To 09/21/2023

11308 GWh

From 01/01/2024 To 09/21/2024

12020 GWh

The above figures are including contribution from roof top solar, non telemetered solar and mini hydro plants)
Unserviced energy due to power cuts has been excluded in 2023

Thermal Power Plant - Fuel types

Table 08

Power Station	Primary Fuel
CEB Thermal	
Sapugaskanda 1	Heavy Fuel
Sapugaskanda 2	Heavy Fuel
Kelanitissa Small Gas Turbines	Auto Diesel
GT 7 - Kelanitissa	Auto Diesel
Kelanitissa CCY	Naphtha or Diesel
Lakvijaya 1	Coal
Lakvijaya 2	Coal
Lakvijaya 3	Coal
Uthuru Janani	Heavy Fuel
Barge CEB	Heavy Fuel
KCCPS -2	Auto Diesel

Power Station	Primary Fuel
Private Thermal	
West Coast	Auto Diesel / Heavy Fuel
Sobadhanavi	Auto Diesel

6. Installed System Capacity

Table 09

	Installed Capacity (MW)
CEB Hydro	1535
CEB Coal	810
CEB Thermal Oil	771
IPP Thermal Oil (West Coast & Sobadhanavi)	490
IPP Wind	163
CEB Wind	100
Mini Hydro	422
IPP Waste heat + Biomass	54
IPP Solar	137
Rooftop Solar (Ordinary)	343
Rooftop Solar (LT Bulk)	289
Rooftop Solar (HT Bulk)	84

Data Source - Monthly Review Report - May 2024 for NCRE installed capacities