

Generation and Reservoirs Statistics

September 17, 2024



PUBLIC UTILITIES COMMISSION OF SRI LANKA

1. Daily Generation Mix

September 17, 2024

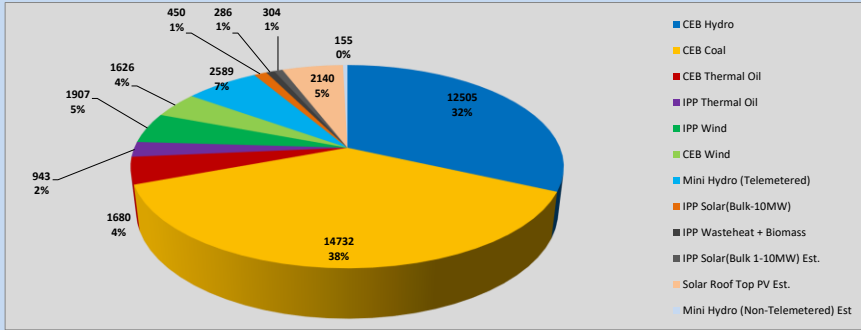


Table 01

	Generation (MWh)
CEB Hydro	12505
CEB Coal	14732
CEB Thermal Oil	1680
IPP Thermal Oil	943
IPP Wind	1907
CEB Wind	1626
Mini Hydro (Telemetered)	2589
IPP Solar (Bulk)	450
IPP Waste heat + Biomass	286
Total Generation (Excluding estimated figures)	36,718
* Estimated unserved energy	0
* Estimated Mini Hydro (Non telemetered)	155
* Estimated IPP Solar PV (Bulk 1-10MW)	304
* Estimated Solar Roof Top PV	2140
Total Generation (Including estimated figures)	39,317

* Estimated figures of CEB generation report

1.1 Cumulative Dispatch - 2024

Table 02 - Current Month

Category	Dispatch (GWh)	
CEB Hydro	238	30.59%
CEB Coal	295	38.05%
CEB Thermal Oil	36	4.64%
IPP Thermal	10	1.26%
IPP Wind	40	5.17%
CEB Wind	34	4.39%
Mini Hydro *	70	8.99%
IPP Solar *	48	6.24%
IPP Waste heat + BMP	5	0.66%
Total	777	

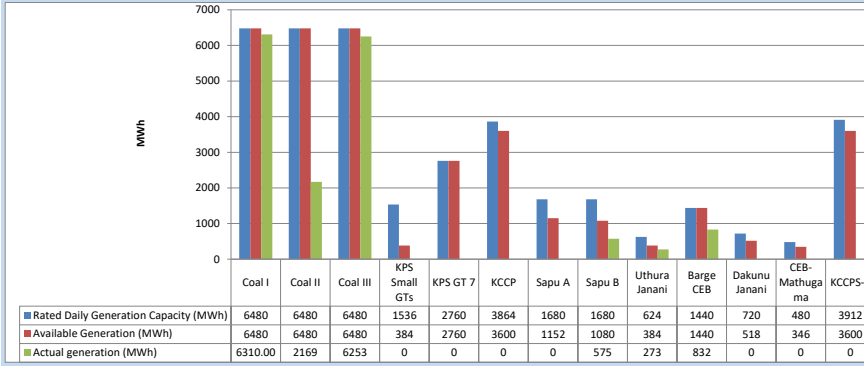
Table 03 - Current Year

Category	Dispatch (GWh)	
CEB Hydro	3,689	31.16%
CEB Coal	4,174	35.26%
CEB Thermal Oil	1,167	9.85%
IPP Thermal	519	4.38%
IPP Wind	303	2.56%
CEB Wind	300	2.53%
Mini Hydro *	863	7.29%
IPP Solar *	722	6.10%
IPP Waste heat	103	0.87%
Total	11,840	

*Including estimated contribution from non telemetered plants

1.2 CEB owned Thermal Plant Dispatch

September 17, 2024

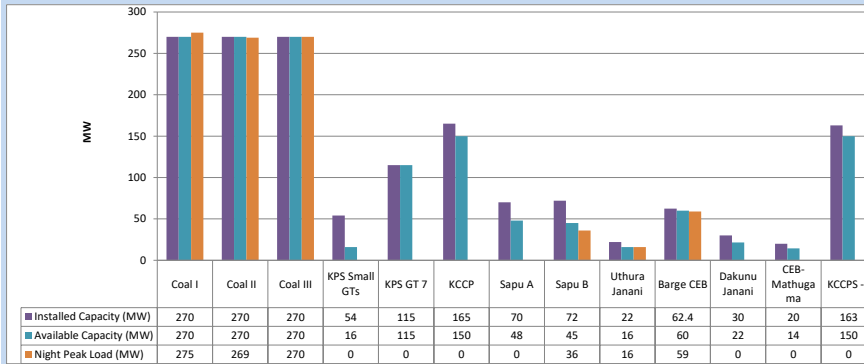


Available Generation is estimated based on plant availability at 6.00am on

September 18, 2024

1.3 CEB owned Thermal Plant Loading at the Night Peak

September 17, 2024

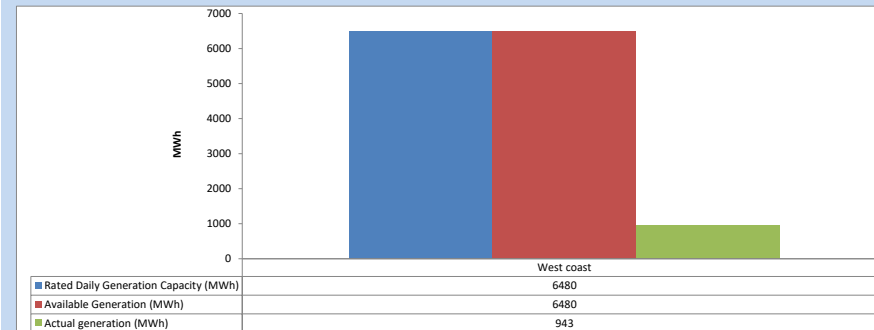


Plant availability is recorded at 6.00 am on

September 18, 2024

1.4 IPP owned Thermal Plant Dispatch

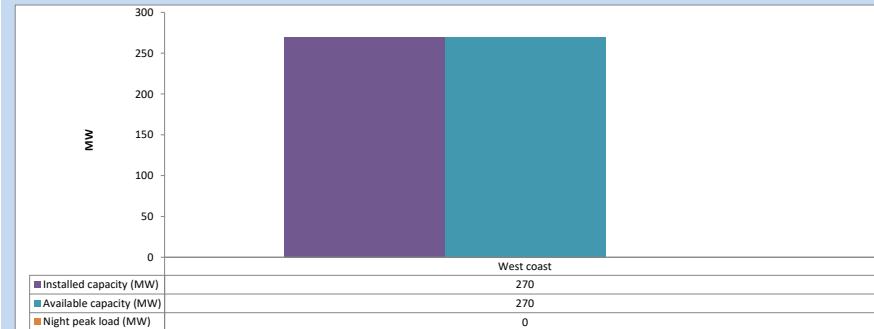
September 17, 2024



Available Generation is estimated based on plant availability at 6.00am on

September 18, 2024

1.5 IPP owned Thermal Plant Loading at the Night Peak

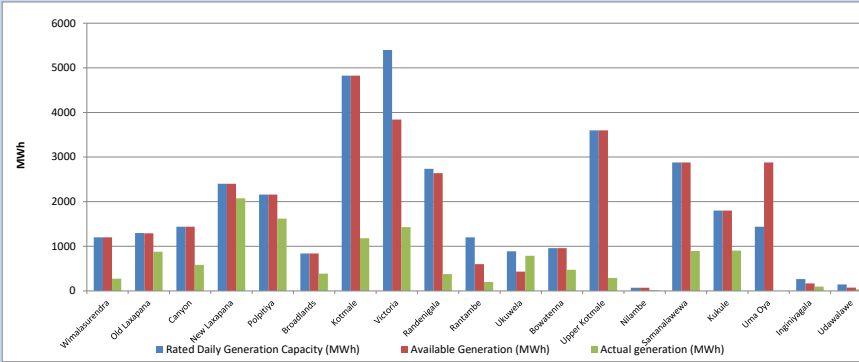


Plant availability is recorded at 6.00 am on

September 18, 2024

1.6 Major Hydro Plant Dispatch

September 17, 2024

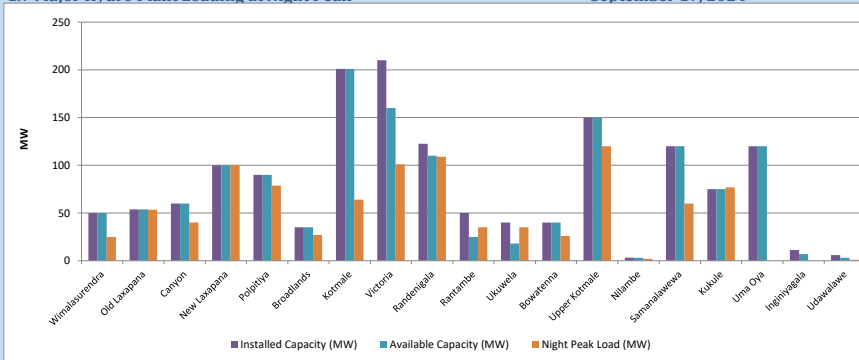


Available Generation is estimated based on plant availability at 6.00am on

September 18, 2024

1.7 Major Hydro Plant Loading at Night Peak

September 17, 2024



Plant availability is recorded at 6.00 am on

September 18, 2024

1.8 Summary of Major Plant performance

September 17, 2024

Table 04

Plant	Maximum Available Total Capacity (MW)	Plant Availability (MW)	Night peak Load (MW)	Plant Dispatch (MWh)
Wimalasurendra	50	50	25	274
Old Laxapana	54	54	53	879
Canyon	60	60	40	583
New Laxapana	100	100	100	2,076
Polpitiya	90	90	79	1,620
Broadlands	35	35	27	388
Kotmale	201	201	64	1,180
Victoria	210	160	101	1,430
Randenigala	123	110	109	379
Rantambe	50	25	35	201
Ukuwela	40	18	35	787
Bowatenna	40	40	26	475
Upper Kotmale	150	150	120	289
Nilambe	3	3	2	16
Samanalawewa	120	120	60	895
Kukule	75	75	77	903
Uma Oya	120	120	0	0
Inginiyagala	11	7	0	96
Udawalawe	6	3	1	37
Puttalam Coal I	270	270	275	6,310
Puttalam Coal II	270	270	269	2,169
Puttalam Coal III	270	270	270	6,253
KPS Small GTs	54	16	0	0
KPS GT 7	115	115	0	0
KCCP	165	150	0	0
Sapugaskanda A	70	48	0	0
Sapugaskanda B	72	45	36	575
Uthura Janani	22	16	16	273
Barge CEB	62	60	59	832
CEB-Hambantota	30	22	0	0
CEB-Mathugama	20	14	0	0
ACE Matara	24	0	0	0
Asia Power	50	0	0	0
KCCPS -2	163	150	0	0
West Coast	270	270	0	943
Nothern Power	36	0	0	0
ACE Embilipitiya	93	0	0	0
Sobadhanavi (Testing)	220	212	0	0
Total	3,594	3,137	2,177	36,721

Note-

Plant availability is the availability recorded at 6 am on

September 18, 2024

1.9 Contribution to the Night Peak in MW

September 17, 2024

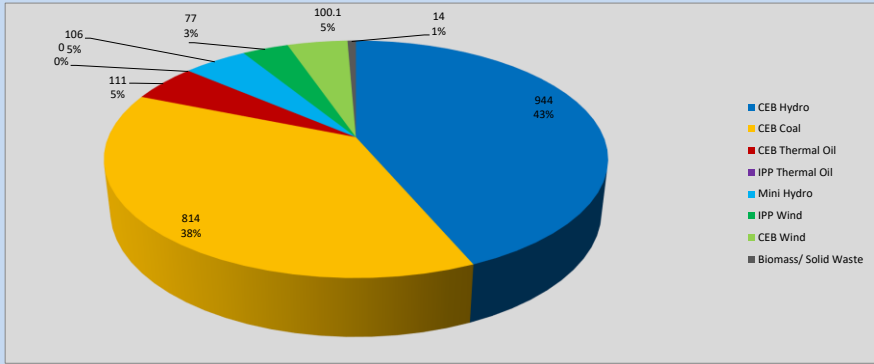


Table 05

CEB Hydro	944	MW
CEB Coal	814	MW
CEB Thermal Oil	111	MW
IPP Thermal Oil	0	MW
Mini Hydro (Telemetered)	106	MW
IPP Wind	77	MW
CEB Wind	100.1	MW
Biomass/ Solid Waste	14	MW

Recorded Peak Demand Data

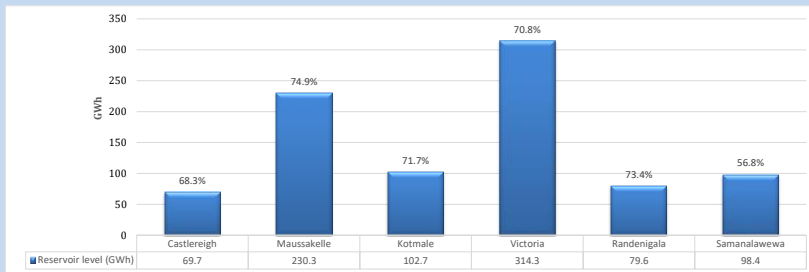
Table 06

Night Peak*	2,166	MW
Day Peak Maximum Demand	1,660	MW
Day Peak Minimum Demand	1,130	MW
Off Peak Minimum Demand	1,422	MW

Above figures are excluding contribution from roof top solar, non telemetered solar and mini hydro plants

1.10 Reservoir Levels -

as at 06.00 Hr on September 18, 2024



Total Reservoir Level: 895 GWh
% of Total capacity: 70.0%

1.11 Day Ahead Planned Demand Vs Actual Demand (Excluding non telemetered data)

September 17, 2024

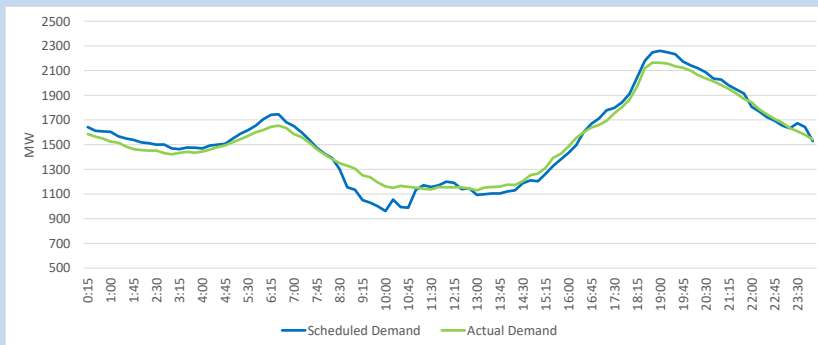
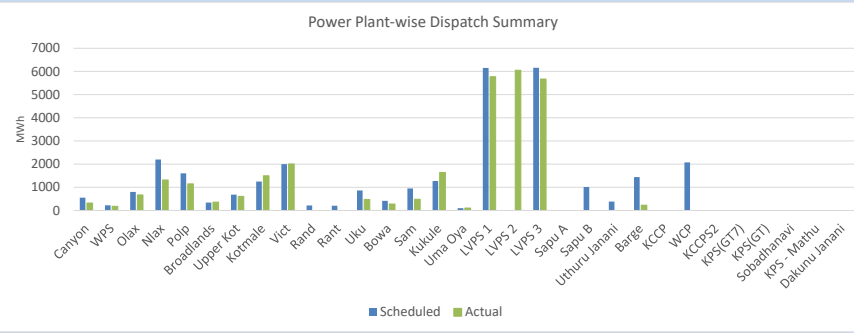


Table 07

Category	Scheduled Dispatch (MWh)	Actual Dispatch (MWh)	Deviation (MWh)
Major Hydro	13,668	11,093	(2,574)
CEB Coal	12,314	17,502	5,189
CEB Thermal Oil	2,838	228	(2,610)
IPP Thermal Oil	2,077	-	(2,077)
NCRE (telemetered)	5,997	7,019	1,021
Total	36,894	35,842	-1,052

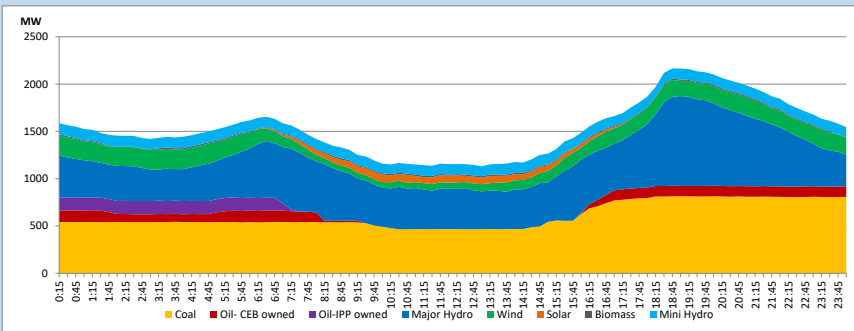
1.12 Power Plant-wise Dispatch Summary

September 17, 2024



1.13 Daily Load Curve

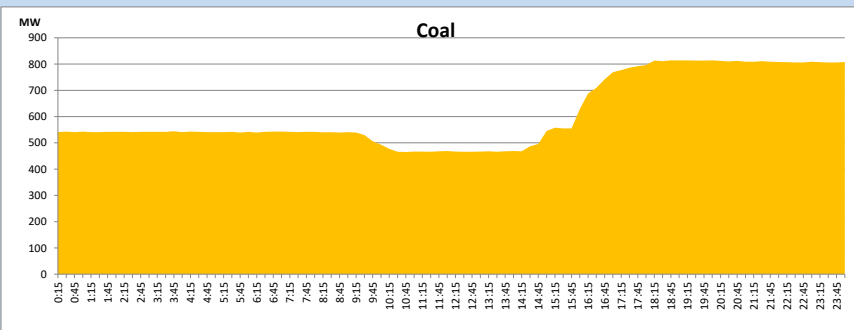
September 17, 2024



Solar and wind data is based on Telemetered Power Stations only

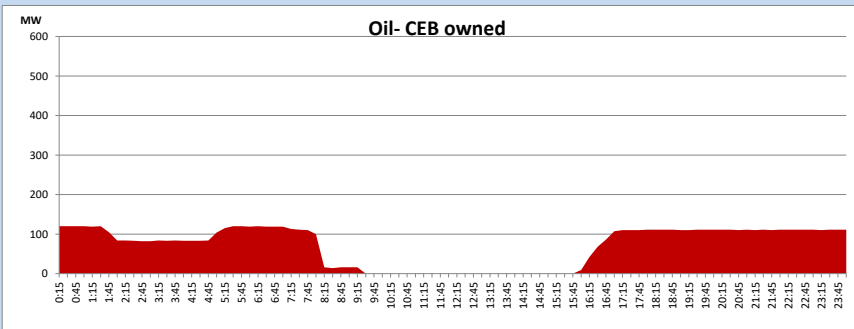
Coal Generation during

September 17, 2024

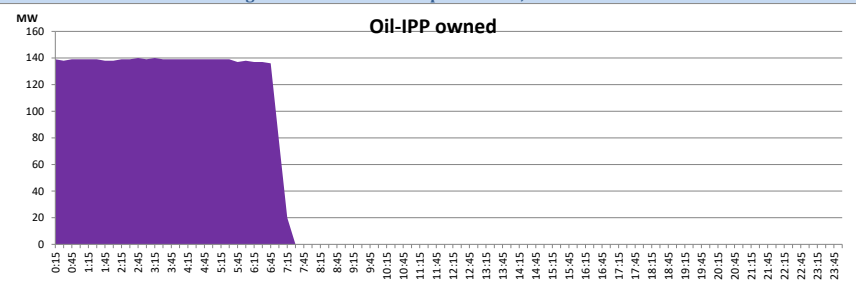


CEB Oil Plant Generation during

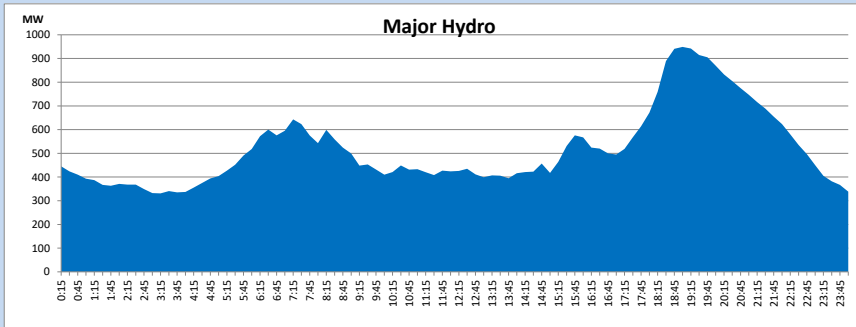
September 17, 2024



IPP Oil Plant Generation during September 17, 2024

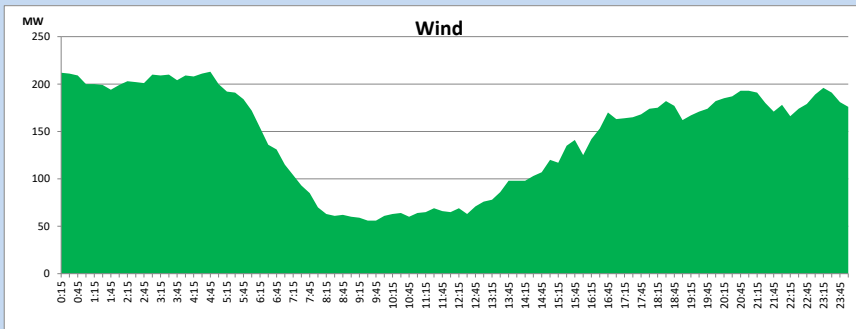


Major Hydro Generation during September 17, 2024



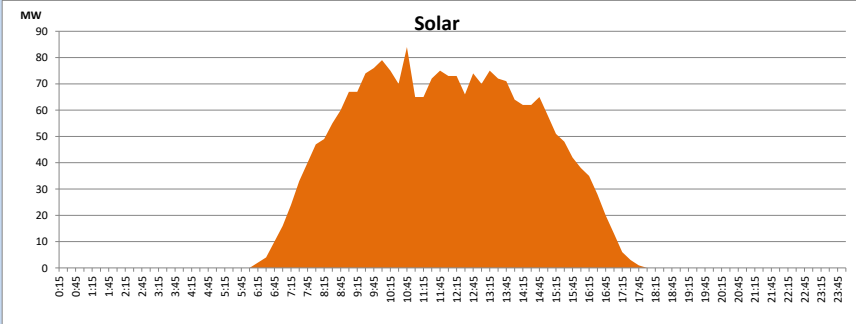
Wind Generation during September 17, 2024

Based on Telemetered Power Stations only



Solar Generation during September 17, 2024

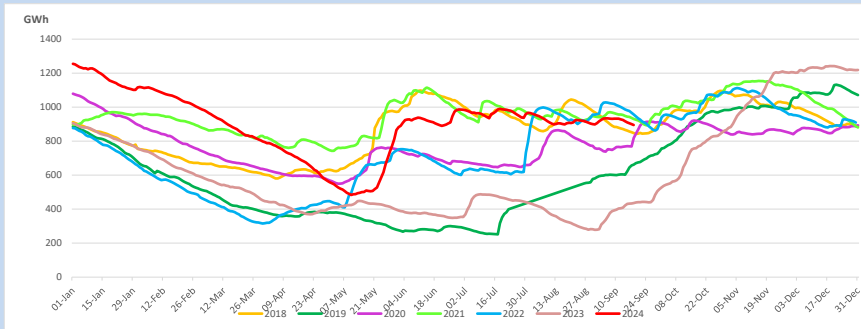
Based on Telemetered Power Stations only



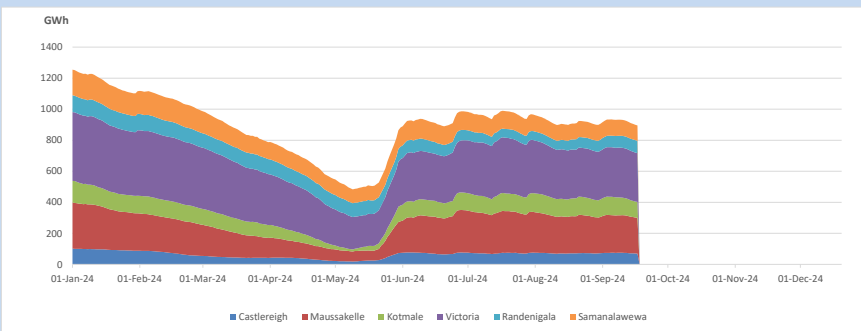
1.14 Major Incidents reported during the day September 17, 2024

- 1) LVPS Unit 02 was synchronized at 11:11hrs and reached full load at 18:16hrs.
- 2) Matara GSS 33kV B/S C/B 01, which tripped on 14.09.2024, was normalized at 14:30hrs.
- 3) Kalutara GSS 132/33kV T/F 02, which tripped on 15.09.2024, was energized at 16:19hrs.

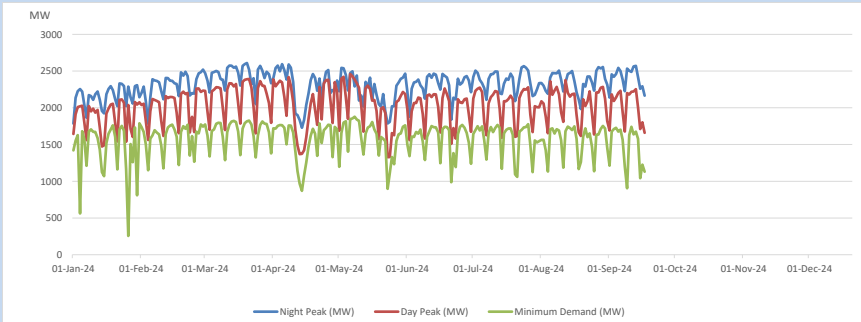
2. Comparison of Total Reservoir Storage Levels with Past Years



3. Variation of Major Hydro Reservoir Levels in the current year (GWh)

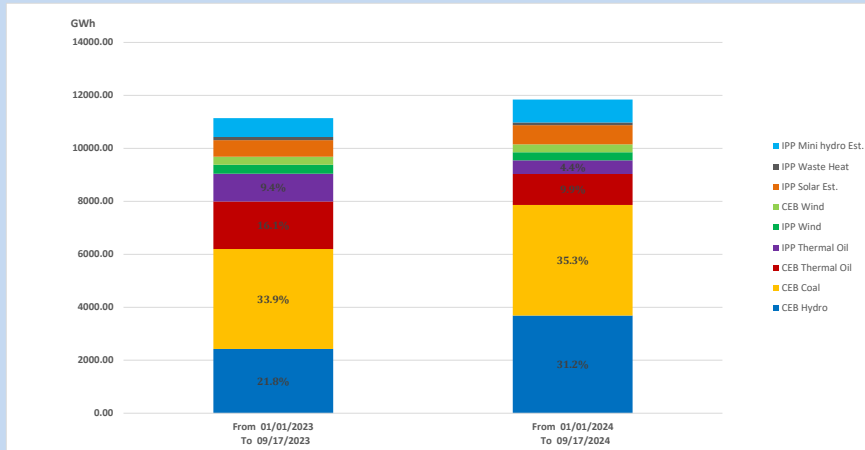


4. Variation of Demand during the current year



The above figures are excluding contribution from roof top solar, non telemetered solar and mini hydro plants

5. Cumulative Dispatch Comparison with Last Year



Cumulative dispatch

From 01/01/2023 To 09/17/2023

11143 GWh

From 01/01/2024 To 09/17/2024

11840 GWh

The above figures are including contribution from roof top solar, non telemetered solar and mini hydro plants)

Unserviced energy due to power cuts has been excluded in 2023

Thermal Power Plant - Fuel types

Table 08

Power Station	Primary Fuel
CEB Thermal	
Sapugaskanda 1	Heavy Fuel
Sapugaskanda 2	Heavy Fuel
Kelanitissa Small Gas Turbines	Auto Diesel
GT 7 - Kelanitissa	Auto Diesel
Kelanitissa CCY	Naphtha or Diesel
Lakvijaya 1	Coal
Lakvijaya 2	Coal
Lakvijaya 3	Coal
Uthuru Janani	Heavy Fuel
Barge CEB	Heavy Fuel
KCCPS -2	Auto Diesel

Power Station	Primary Fuel
Private Thermal	
West Coast	Auto Diesel / Heavy Fuel
Sobadhanavi	Auto Diesel

6. Installed System Capacity

Table 09

	Installed Capacity (MW)
CEB Hydro	1530
CEB Coal	810
CEB Thermal Oil	786
IPP Thermal Oil (West Coast & Sobadhanavi)	482
IPP Wind	163
CEB Wind	100
Mini Hydro	422
IPP Waste heat + Biomass	54
IPP Solar	137
Rooftop Solar (Ordinary)	343
Rooftop Solar (LT Bulk)	289
Rooftop Solar (HT Bulk)	84

Data Source - Monthly Review Report - May 2024 for NCRE installed capacities