

Generation and Reservoirs Statistics

September 15, 2024



PUBLIC UTILITIES COMMISSION OF SRI LANKA

1. Daily Generation Mix

September 15, 2024

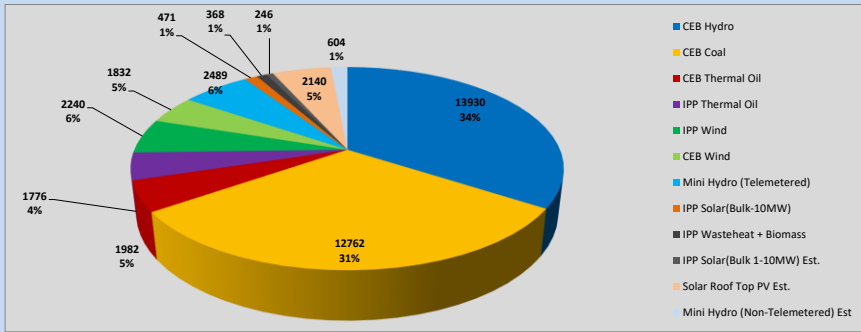


Table 01

	Generation (MWh)
CEB Hydro	13930
CEB Coal	12762
CEB Thermal Oil	1982
IPP Thermal Oil	1776
IPP Wind	2240
CEB Wind	1832
Mini Hydro (Telemetered)	2489
IPP Solar (Bulk)	471
IPP Waste heat + Biomass	368
Total Generation (Excluding estimated figures)	37,850
* Estimated unserved energy	0
* Estimated Mini Hydro (Non telemetered)	604
* Estimated IPP Solar PV (Bulk 1-10MW)	246
* Estimated Solar Roof Top PV	2140
Total Generation (Including estimated figures)	40,840

* Estimated figures of CEB generation report

1.1 Cumulative Dispatch - 2024

Table 02 - Current Month

Category	Dispatch (GWh)	
CEB Hydro	211	30.27%
CEB Coal	268	38.55%
CEB Thermal Oil	32	4.64%
IPP Thermal	7	0.99%
IPP Wind	36	5.17%
CEB Wind	31	4.41%
Mini Hydro *	64	9.18%
IPP Solar *	43	6.14%
IPP Waste heat + BMP	5	0.66%
Total	696	

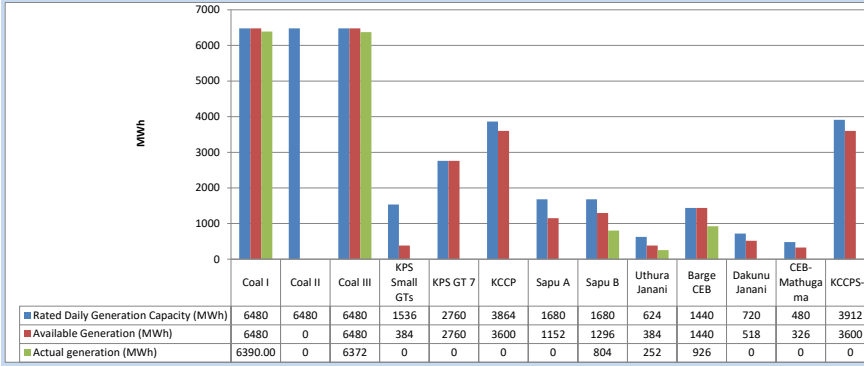
Table 03 - Current Year

Category	Dispatch (GWh)	
CEB Hydro	3,662	31.14%
CEB Coal	4,147	35.27%
CEB Thermal Oil	1,163	9.89%
IPP Thermal	516	4.39%
IPP Wind	299	2.54%
CEB Wind	296	2.52%
Mini Hydro *	857	7.29%
IPP Solar *	717	6.09%
IPP Waste heat	102	0.87%
Total	11,759	

*Including estimated contribution from non telemetered plants

1.2 CEB owned Thermal Plant Dispatch

September 15, 2024

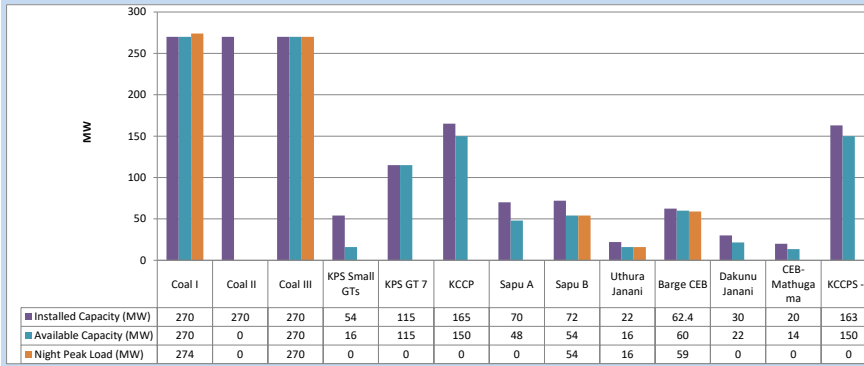


Available Generation is estimated based on plant availability at 6.00am on

September 16, 2024

1.3 CEB owned Thermal Plant Loading at the Night Peak

September 15, 2024

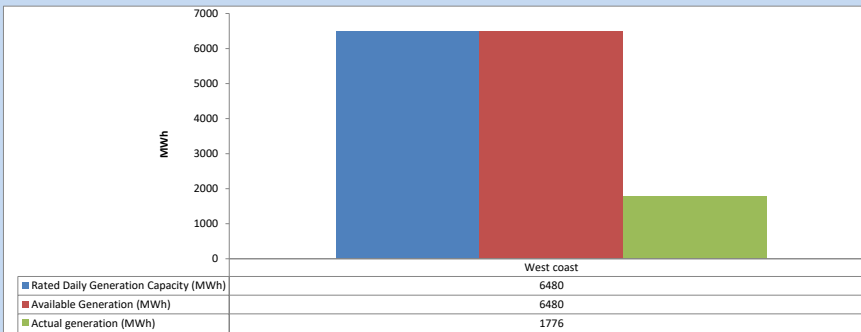


Plant availability is recorded at 6.00 am on

September 16, 2024

1.4 IPP owned Thermal Plant Dispatch

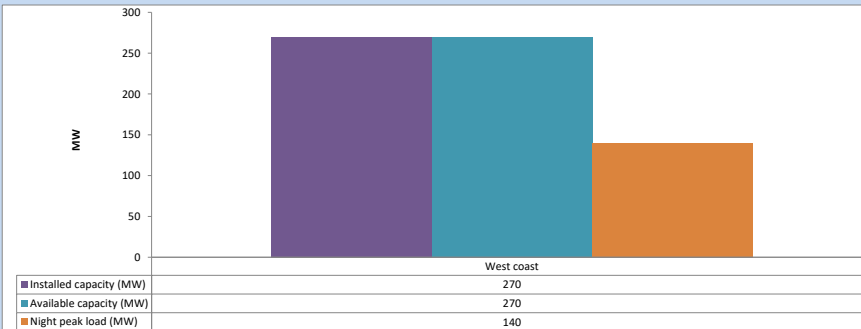
September 15, 2024



Available Generation is estimated based on plant availability at 6.00am on

September 16, 2024

1.5 IPP owned Thermal Plant Loading at the Night Peak

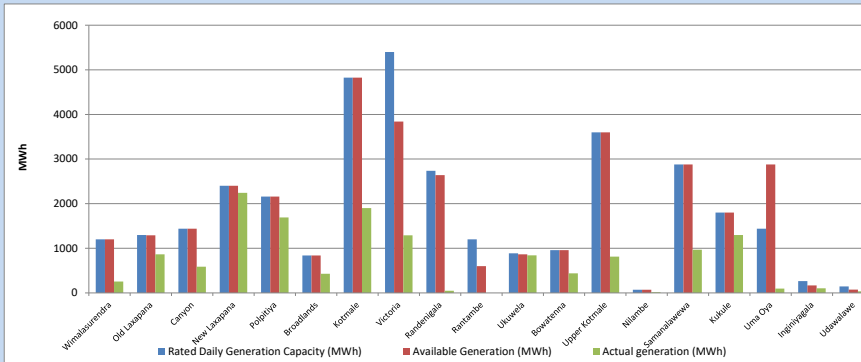


Plant availability is recorded at 6.00 am on

September 16, 2024

1.6 Major Hydro Plant Dispatch

September 15, 2024

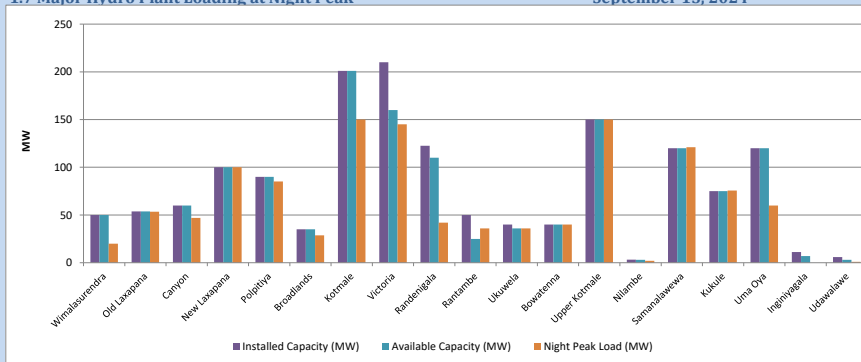


Available Generation is estimated based on plant availability at 6.00am on

September 16, 2024

1.7 Major Hydro Plant Loading at Night Peak

September 15, 2024



Plant availability is recorded at 6.00 am on

September 16, 2024

1.8 Summary of Major Plant performance

September 15, 2024

Table 04

Plant	Maximum Available Total Capacity (MW)	Plant Availability (MW)	Night peak Load (MW)	Plant Dispatch (MWh)
Wimalasurendra	50	50	20	255
Old Laxapana	54	54	53	865
Canyon	60	60	47	588
New Laxapana	100	100	100	2,242
Polpitiya	90	90	85	1,690
Broadlands	35	35	29	429
Kotmale	201	201	150	1,900
Victoria	210	160	145	1,292
Randenigala	123	110	42	50
Rantambe	50	25	36	0
Ukuwela	40	36	36	843
Bowatenna	40	40	40	440
Upper Kotmale	150	150	150	813
Nilambe	3	3	2	17
Samanalawewa	120	120	121	968
Kukule	75	75	76	1,299
Uma Oya	120	120	60	96
Inginiyagala	11	7	0	105
Udawalawe	6	3	1	37
Puttalam Coal I	270	270	274	6,390
Puttalam Coal II	270	0	0	0
Puttalam Coal III	270	270	270	6,372
KPS Small GTs	54	16	0	0
KPS GT 7	115	115	0	0
KCCP	165	150	0	0
Sapugaskanda A	70	48	0	0
Sapugaskanda B	72	54	54	804
Uthura Janani	22	16	16	252
Barge CEB	62	60	59	926
CEB-Hambantota	30	22	0	0
CEB-Mathugama	20	14	0	0
ACE Matara	24	0	0	0
Asia Power	50	0	0	0
KCCPS -2	163	150	0	0
West Coast	270	270	140	1,776
Nothern Power	36	0	0	0
ACE Embilipitiya	93	0	0	0
Sobadhanavi (Testing)	220	212	0	0
Total	3,594	2,893	2,297	37,849

Note-

Plant availability is the availability recorded at 6 am on

September 16, 2024

1.9 Contribution to the Night Peak in MW

September 15, 2024

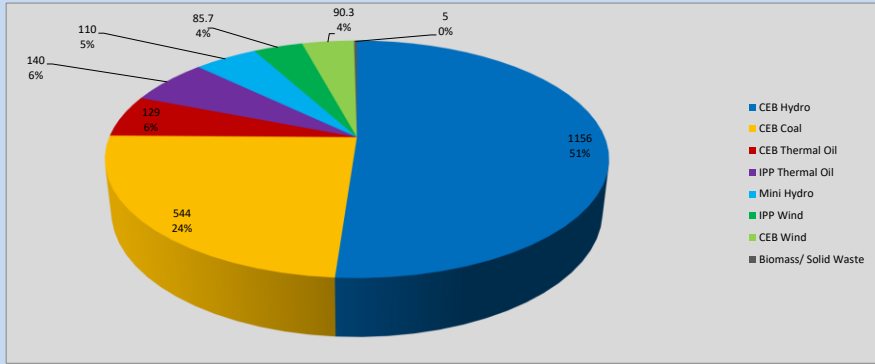


Table 05

CEB Hydro	1156	MW
CEB Coal	544	MW
CEB Thermal Oil	129	MW
IPP Thermal Oil	140	MW
Mini Hydro (Telemetered)	110	MW
IPP Wind	85.7	MW
CEB Wind	90.3	MW
Biomass/ Solid Waste	5	MW

Recorded Peak Demand Data

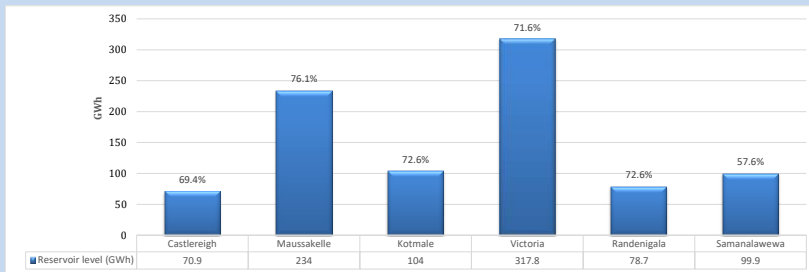
Table 06

Night Peak*	2,259	MW
Day Peak Maximum Demand	1,712	MW
Day Peak Minimum Demand	1,042	MW
Off Peak Minimum Demand	1,469	MW

Above figures are excluding contribution from roof top solar, non telemetered solar and mini hydro plants

1.10 Reservoir Levels -

as at 06.00 Hr on September 16, 2024



Total Reservoir Level
% of Total capacity

905.3 GWh
70.8%

1.11 Day Ahead Planned Demand Vs Actual Demand (Excluding non telemetered data)

September 15, 2024

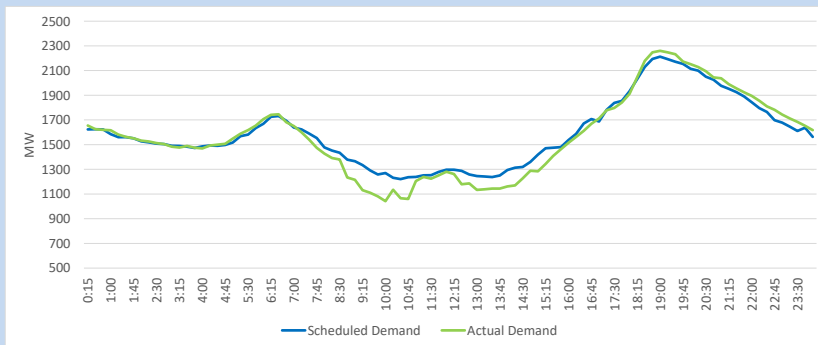
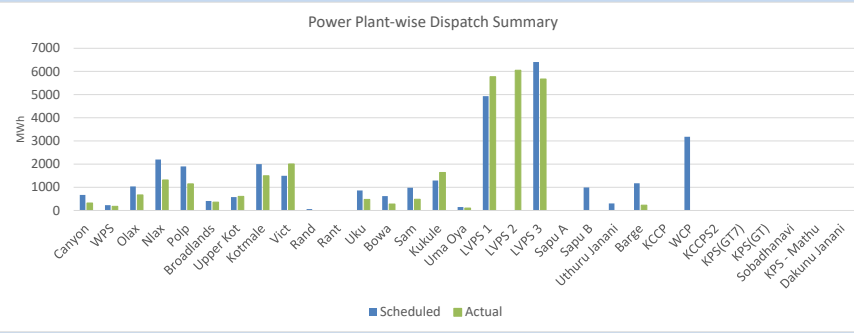


Table 07

Category	Scheduled Dispatch (MWh)	Actual Dispatch (MWh)	Deviation (MWh)
Major Hydro	14,493	11,093	(3,400)
CEB Coal	11,337	17,502	6,166
CEB Thermal Oil	2,467	228	(2,239)
IPP Thermal Oil	3,184	-	(3,184)
NCRE (Telemetered)	6,716	7,318	602
Total	38,197	36,141	-2056

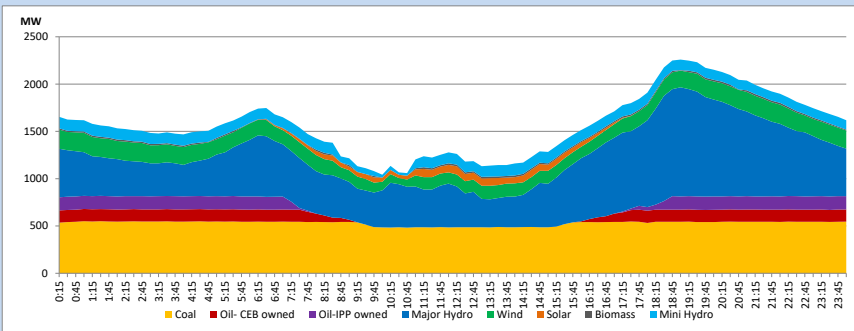
1.12 Power Plant-wise Dispatch Summary

September 15, 2024



1.13 Daily Load Curve

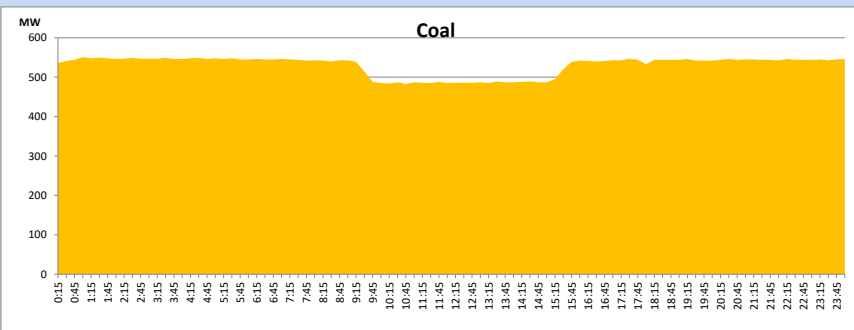
September 15, 2024



Solar and wind data is based on Telemetered Power Stations only

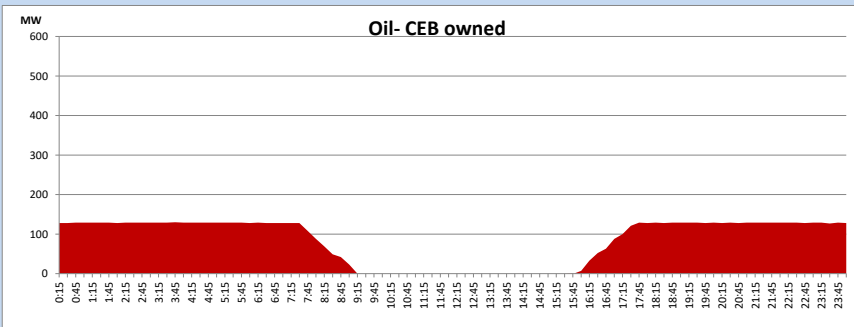
Coal Generation during

September 15, 2024

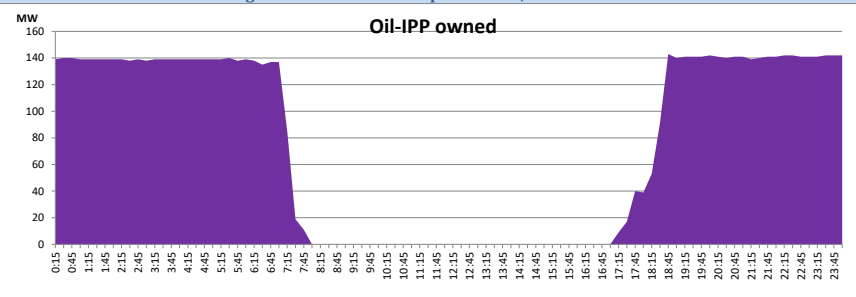


CEB Oil Plant Generation during

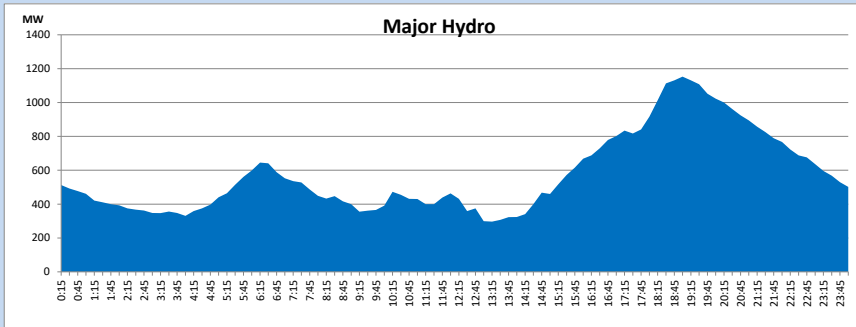
September 15, 2024



IPP Oil Plant Generation during September 15, 2024

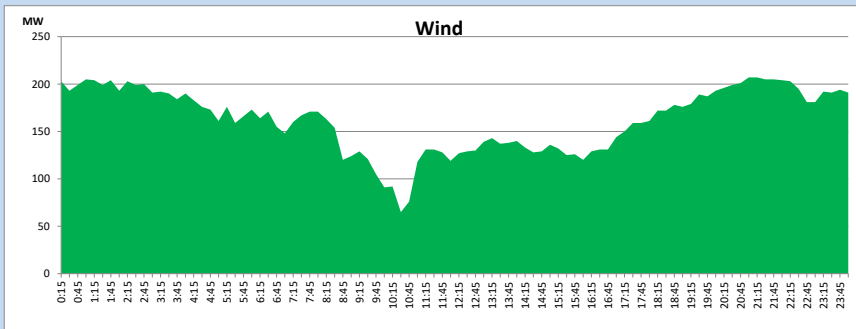


Major Hydro Generation during September 15, 2024



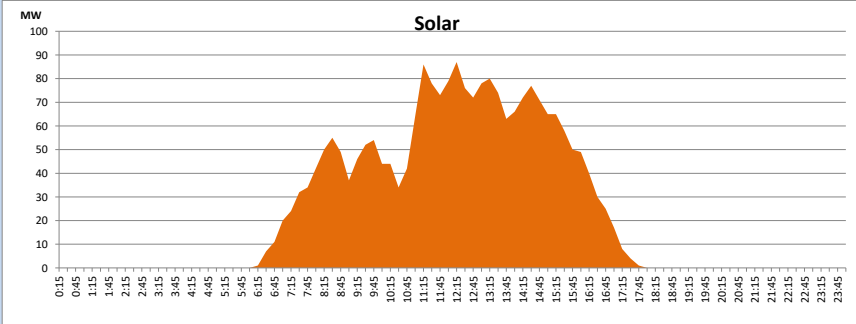
Wind Generation during September 15, 2024

Based on Telemetered Power Stations only



Solar Generation during September 15, 2024

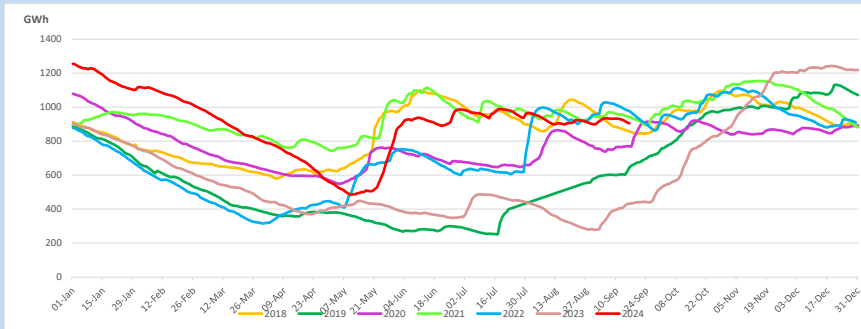
Based on Telemetered Power Stations only



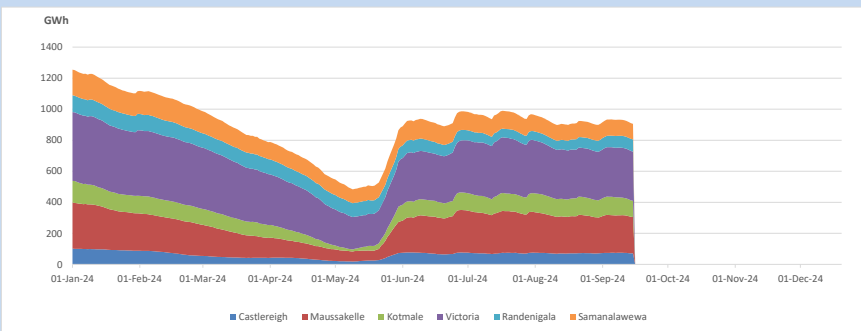
1.14 Major Incidents reported during the day September 15, 2024

- 1) Kappalurei-N'Anuradhapura cct tripped & A/R from Kappalurei end only at 11:27hrs. Thereafter, the cct tripped from both ends at the same time due to the operation of distance protection. The cct was restored at 11:47hrs.
- 2) At 12:52hrs, the UFLS stage (II) operated with the system frequency drop up to 48.37 Hz. All affected feeders were restored by 13:05hrs.
- 3) Kalutara 132/33 kV T/F O2 tripped from both ends at 18:34hrs. The T/F is yet to be restored.

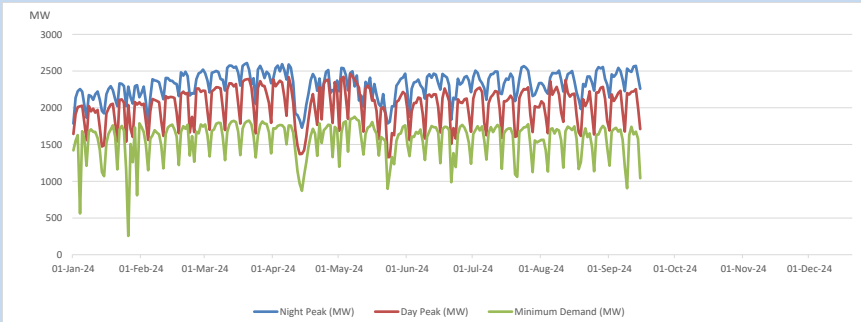
2. Comparison of Total Reservoir Storage Levels with Past Years



3. Variation of Major Hydro Reservoir Levels in the current year (GWh)

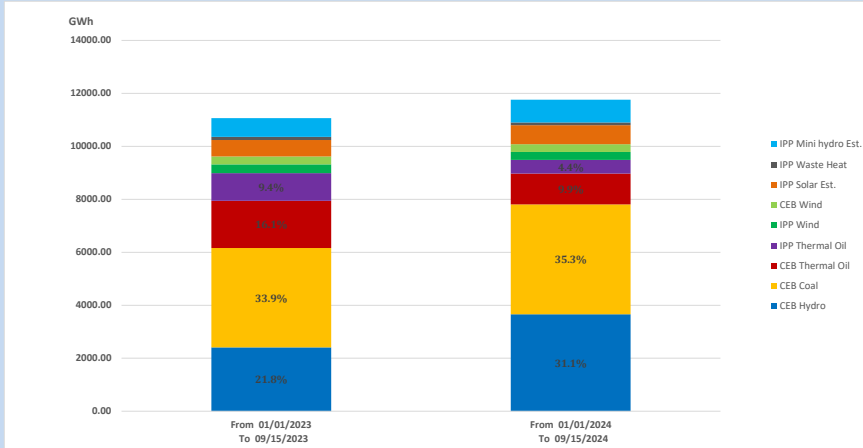


4. Variation of Demand during the current year



The above figures are excluding contribution from roof top solar, non telemetered solar and mini hydro plants

5. Cumulative Dispatch Comparison with Last Year



Cumulative dispatch

From 01/01/2023 To 09/15/2023

11068 GWh

From 01/01/2024 To 09/15/2024

11759 GWh

The above figures are including contribution from roof top solar, non telemetered solar and mini hydro plants)

Unserviced energy due to power cuts has been excluded in 2023

Thermal Power Plant - Fuel types

Table 08

Power Station	Primary Fuel
CEB Thermal	
Sapugaskanda 1	Heavy Fuel
Sapugaskanda 2	Heavy Fuel
Kelanitissa Small Gas Turbines	Auto Diesel
GT 7 - Kelanitissa	Auto Diesel
Kelanitissa CCY	Naphtha or Diesel
Lakvijaya 1	Coal
Lakvijaya 2	Coal
Lakvijaya 3	Coal
Uthuru Janani	Heavy Fuel
Barge CEB	Heavy Fuel
KCCPS -2	Auto Diesel

Power Station	Primary Fuel
Private Thermal	
West Coast	Auto Diesel / Heavy Fuel
Sobadhanavi	Auto Diesel

6. Installed System Capacity

Table 09

	Installed Capacity (MW)
CEB Hydro	1530
CEB Coal	810
CEB Thermal Oil	786
IPP Thermal Oil (West Coast & Sobadhanavi)	482
IPP Wind	163
CEB Wind	100
Mini Hydro	422
IPP Waste heat + Biomass	54
IPP Solar	137
Rooftop Solar (Ordinary)	343
Rooftop Solar (LT Bulk)	289
Rooftop Solar (HT Bulk)	84

Data Source - Monthly Review Report - May 2024 for NCRE installed capacities