

Generation and Reservoirs Statistics

September 1, 2024



PUBLIC UTILITIES COMMISSION OF SRI LANKA

1. Daily Generation Mix

September 1, 2024

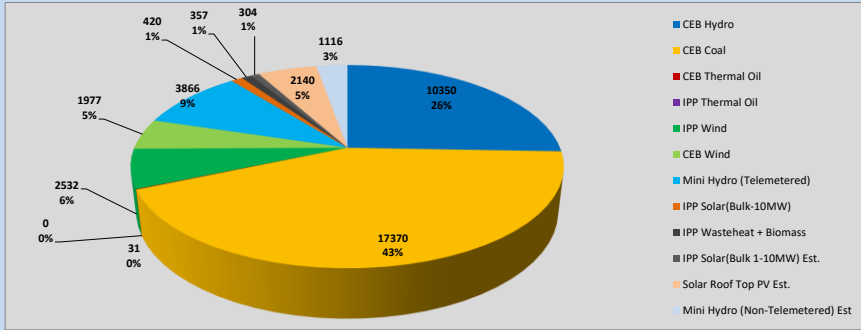


Table 01

	Generation (MWh)
CEB Hydro	10350
CEB Coal	17370
CEB Thermal Oil	31
IPP Thermal Oil	0
IPP Wind	2532
CEB Wind	1977
Mini Hydro (Telemetered)	3866
IPP Solar (Bulk)	420
IPP Waste heat + Biomass	357
Total Generation (Excluding estimated figures)	36,903
* Estimated unserved energy	0
* Estimated Mini Hydro (Non telemetered)	1116
* Estimated IPP Solar PV (Bulk 1-10MW)	304
* Estimated Solar Roof Top PV	2140
Total Generation (Including estimated figures)	40,463

* Estimated figures of CEB generation report

1.1 Cumulative Dispatch - 2024

Table 02 - Current Month

Category	Dispatch (GWh)	
CEB Hydro	10	25.57%
CEB Coal	17	42.92%
CEB Thermal Oil	0	0.07%
IPP Thermal	0	0.00%
IPP Wind	3	6.25%
CEB Wind	2	4.89%
Mini Hydro *	5	12.33%
IPP Solar *	3	7.07%
IPP Waste heat + BMP	0	0.89%
Total	40	

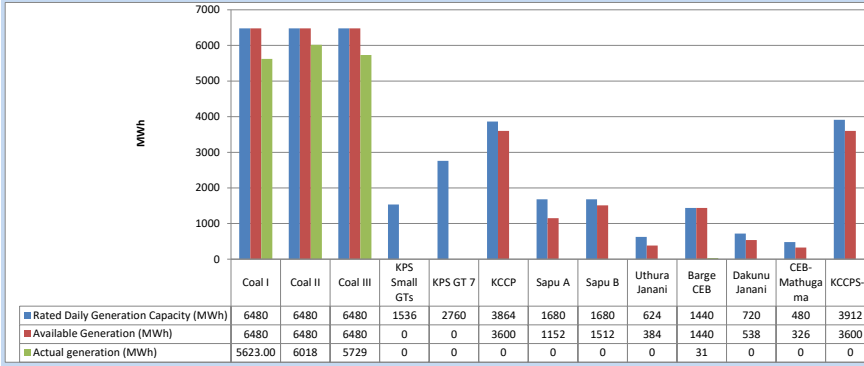
Table 03 - Current Year

Category	Dispatch (GWh)	
CEB Hydro	3,462	31.18%
CEB Coal	3,896	35.09%
CEB Thermal Oil	1,131	10.18%
IPP Thermal	509	4.58%
IPP Wind	265	2.39%
CEB Wind	267	2.41%
Mini Hydro *	799	7.19%
IPP Solar *	677	6.10%
IPP Waste heat	98	0.88%
Total	11,104	

*Including estimated contribution from non telemetered plants

1.2 CEB owned Thermal Plant Dispatch

September 1, 2024

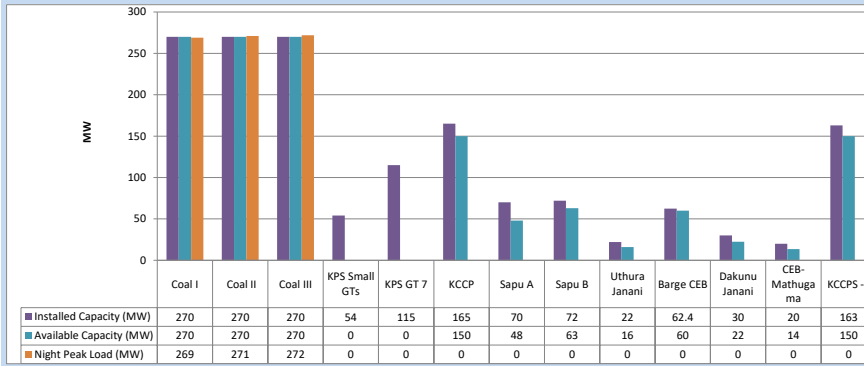


Available Generation is estimated based on plant availability at 6.00am on

September 2, 2024

1.3 CEB owned Thermal Plant Loading at the Night Peak

September 1, 2024

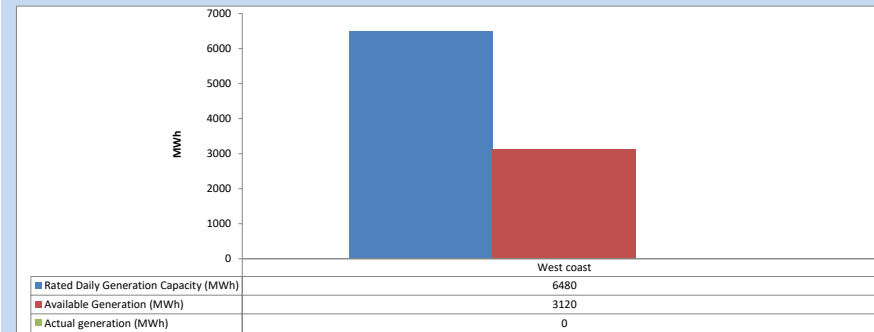


Plant availability is recorded at 6.00 am on

September 2, 2024

1.4 IPP owned Thermal Plant Dispatch

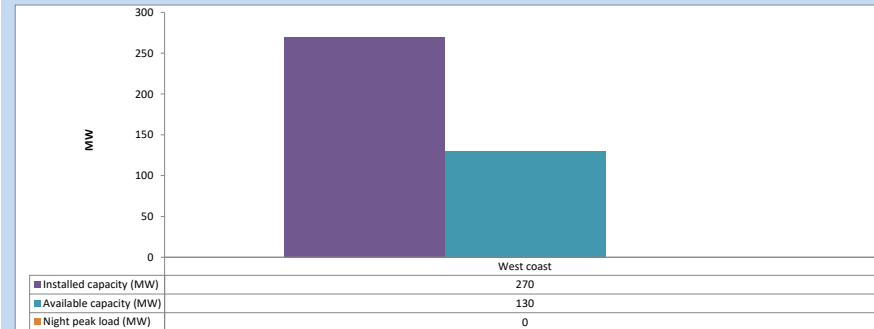
September 1, 2024



Available Generation is estimated based on plant availability at 6.00am on

September 2, 2024

1.5 IPP owned Thermal Plant Loading at the Night Peak

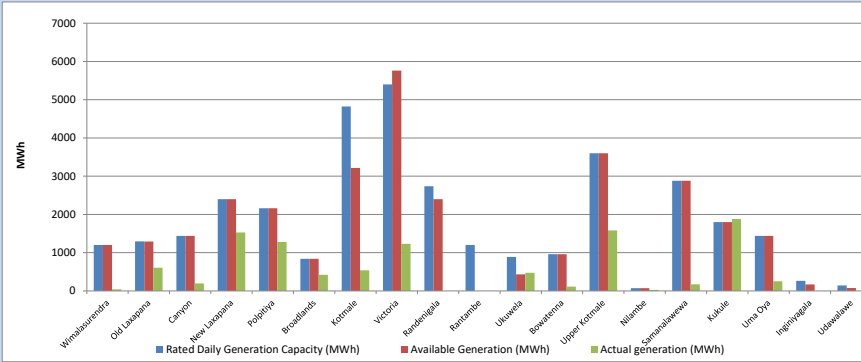


Plant availability is recorded at 6.00 am on

September 2, 2024

1.6 Major Hydro Plant Dispatch

September 1, 2024

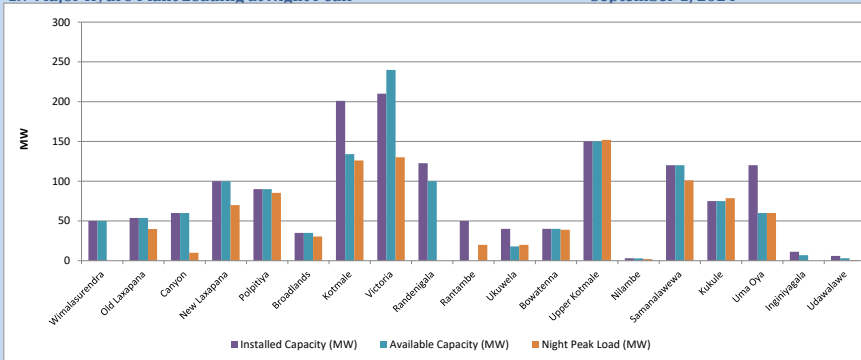


Available Generation is estimated based on plant availability at 6.00am on

September 2, 2024

1.7 Major Hydro Plant Loading at Night Peak

September 1, 2024



Plant availability is recorded at 6.00 am on

September 2, 2024

1.8 Summary of Major Plant performance

September 1, 2024

Table 04

Plant	Maximum Available Total Capacity (MW)	Plant Availability (MW)	Night peak Load (MW)	Plant Dispatch (MWh)
Wimalasurendra	50	50	0	41
Old Laxapana	54	54	40	607
Canyon	60	60	10	195
New Laxapana	100	100	70	1,529
Polpitiya	90	90	85	1,280
Broadlands	35	35	31	422
Kotmale	201	134	126	540
Victoria	210	240	130	1,231
Randenigala	123	100	0	0
Rantambe	50	0	20	0
Ukuwela	40	18	20	475
Bowatenna	40	40	39	114
Upper Kotmale	150	150	152	1,582
Nilambe	3	3	2	28
Samanalawewa	120	120	101	175
Kukule	75	75	79	1,878
Uma Oya	120	60	60	253
Inginiyagala	11	7	0	0
Udawalawe	6	3	1	0
Puttalam Coal I	270	270	269	5,623
Puttalam Coal II	270	270	271	6,018
Puttalam Coal III	270	270	272	5,729
KPS Small GTs	54	0	0	0
KPS GT 7	115	0	0	0
KCCP	165	150	0	0
Sapugaskanda A	70	48	0	0
Sapugaskanda B	72	63	0	0
Uthura Janani	22	16	0	0
Barge CEB	62	60	0	31
CEB-Hambantota	30	22	0	0
CEB-Mathugama	20	14	0	0
ACE Matara	24	0	0	0
Asia Power	50	0	0	0
KCCPS -2	163	150	0	0
West Coast	270	130	0	0
Nothern Power	36	0	0	0
ACE Embilipitiya	93	0	0	0
Sobadhanavi (Testing)	220	212	0	0
Total	3,594	2,802	2,157	36,903

Note-

Plant availability is the availability recorded at 6 am on

September 2, 2024

1.9 Contribution to the Night Peak in MW

September 1, 2024

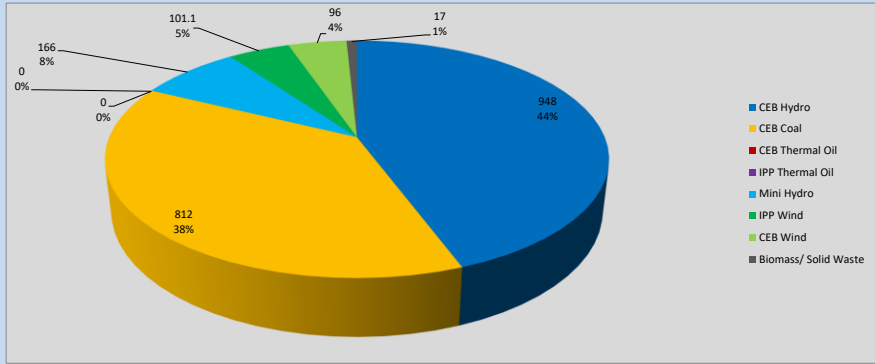


Table 05

CEB Hydro	948	MW
CEB Coal	812	MW
CEB Thermal Oil	0	MW
IPP Thermal Oil	0	MW
Mini Hydro (Telemetered)	166	MW
IPP Wind	101.1	MW
CEB Wind	96	MW
Biomass/ Solid Waste	17	MW

Recorded Peak Demand Data

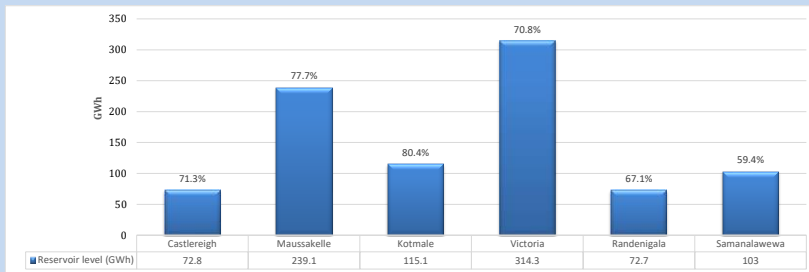
Table 06

Night Peak*	2,140	MW
Day Peak Maximum Demand	1,691	MW
Day Peak Minimum Demand	1,213	MW
Off Peak Minimum Demand	1,368	MW

Above figures are excluding contribution from roof top solar, non telemetered solar and mini hydro plants

1.10 Reservoir Levels -

as at 06.00 Hr on September 2, 2024



Total Reservoir Level
% of Total capacity

917 GWh
71.7%

1.11 Day Ahead Planned Demand Vs Actual Demand (Excluding non telemetered data)

September 1, 2024

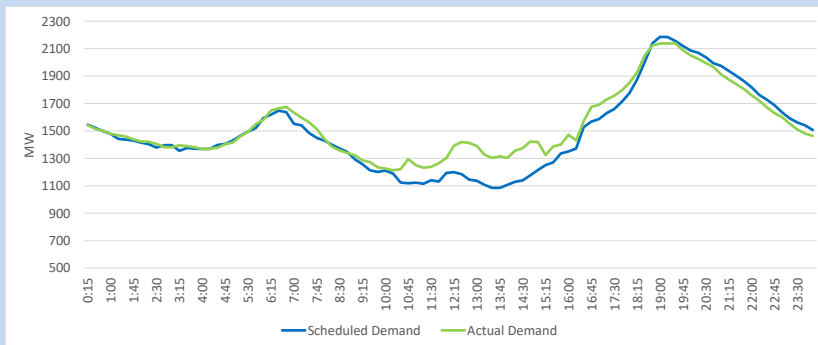
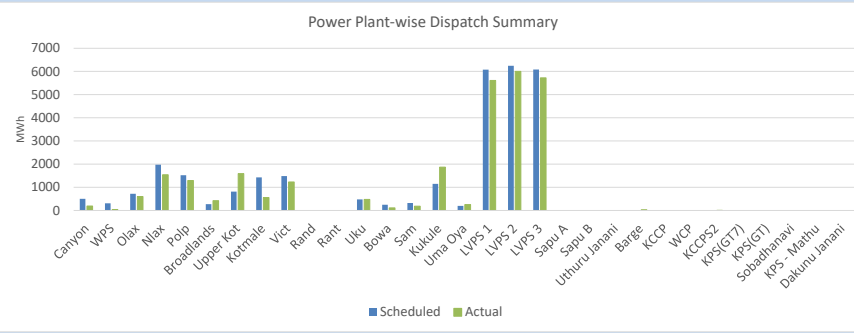


Table 07

Category	Scheduled Dispatch (MWh)	Actual Dispatch (MWh)	Deviation (MWh)
Major Hydro	11,426	10,365	(1,061)
CEB Coal	18,404	17,339	(1,065)
CEB Thermal Oil	-	30	30
IPP Thermal Oil	-	-	-
NCRE (Telemetered)	6,013	9,198	3,185
Total	35,843	36,933	1090

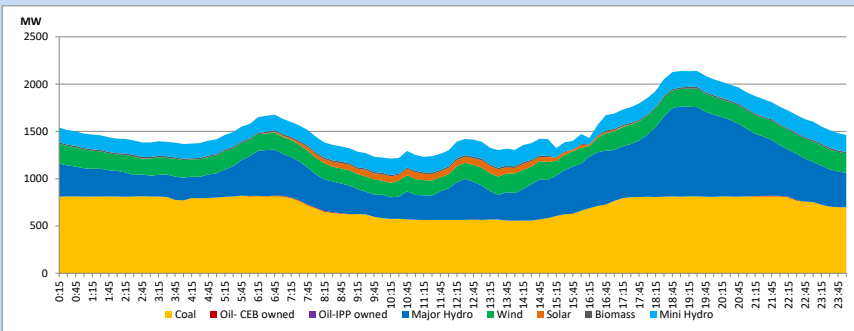
1.12 Power Plant-wise Dispatch Summary

September 1, 2024



1.13 Daily Load Curve

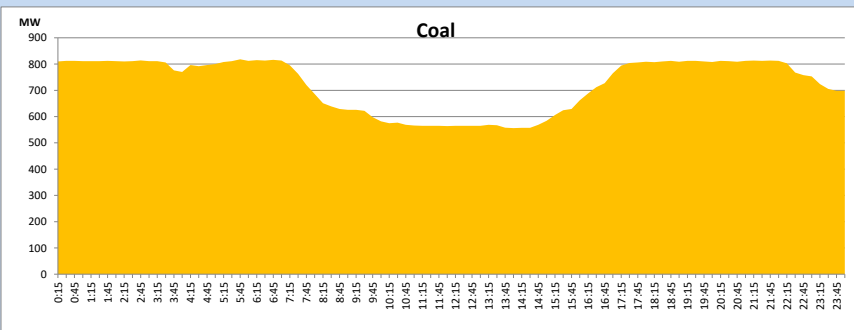
September 1, 2024



Solar and wind data is based on Telemetered Power Stations only

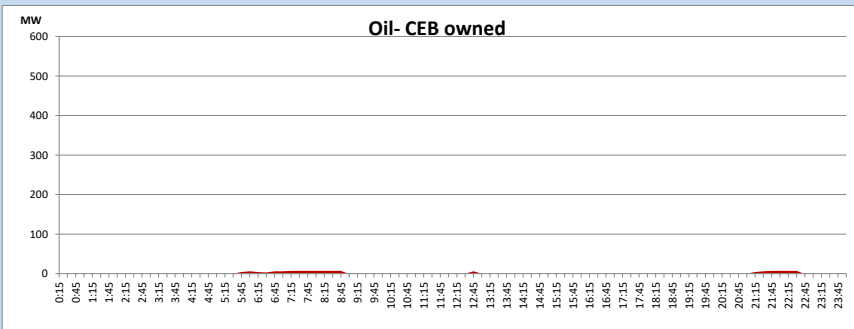
Coal Generation during

September 1, 2024

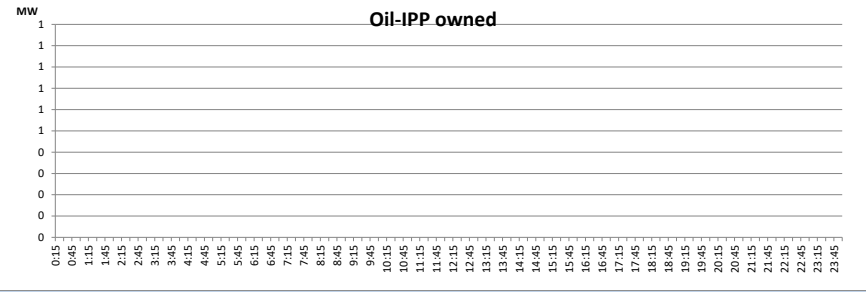


CEB Oil Plant Generation during

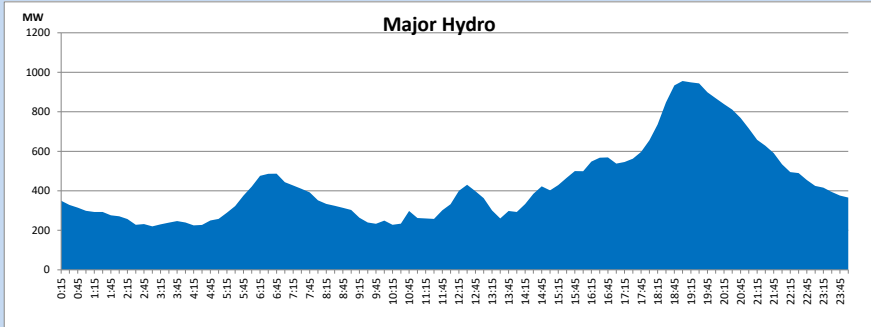
September 1, 2024



IPP Oil Plant Generation during September 1, 2024

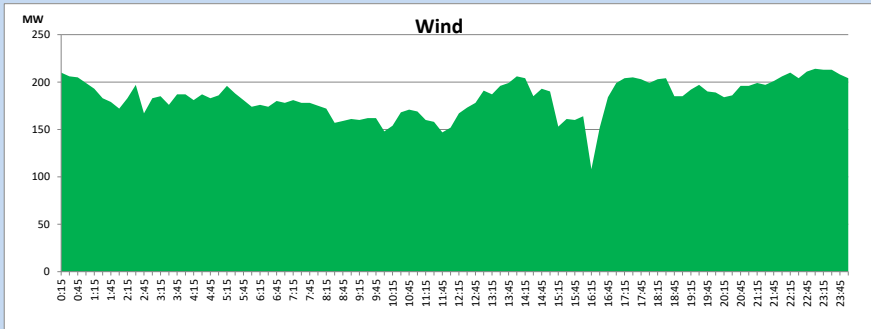


Major Hydro Generation during September 1, 2024



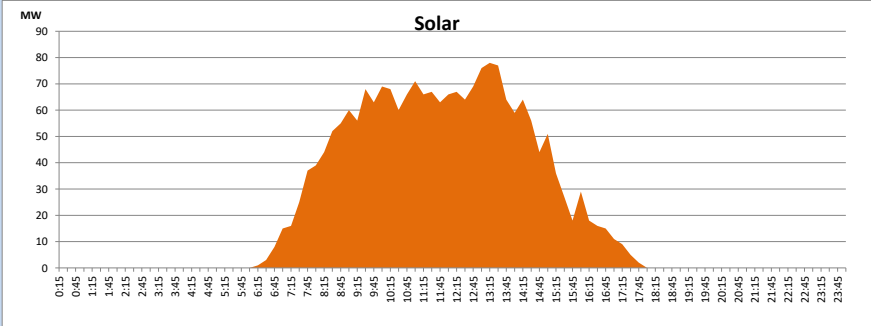
Wind Generation during September 1, 2024

Based on Telemetered Power Stations only



Solar Generation during September 1, 2024

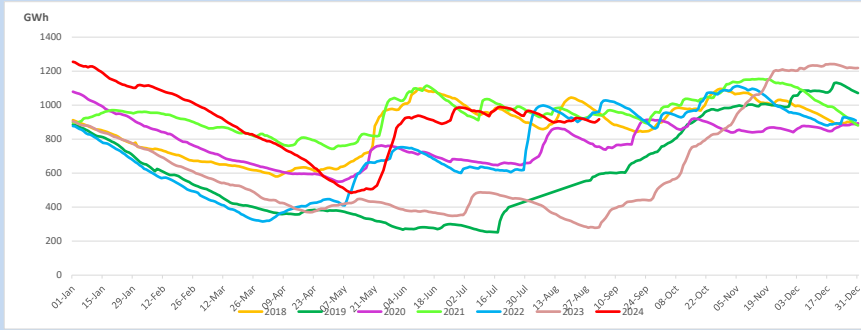
Based on Telemetered Power Stations only



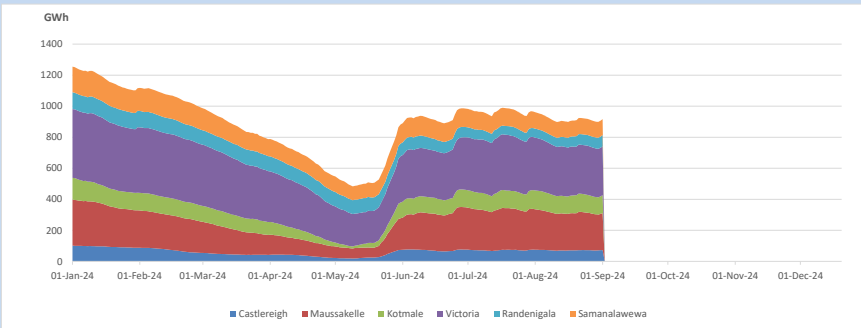
1.14 Major Incidents reported during the day September 1, 2024

- 1) Kukule pond spilling started at 21:30hrs and continues to the present hour.
- 2) Kolonnawa - Kosgama 132kV cct tripped & A/R from both ends at 05:35hrs (02.09.2024) due to the operation of distance protection.
- 3) Ratnapura - Balangoda 132kV cct tripped from Ratnapura end and tripped & A/R from Balangoda end at 05:53hrs (02.09.2024) with the indication of line CVT fail. The cct was normalized at 06:36hrs (02.09.2024).

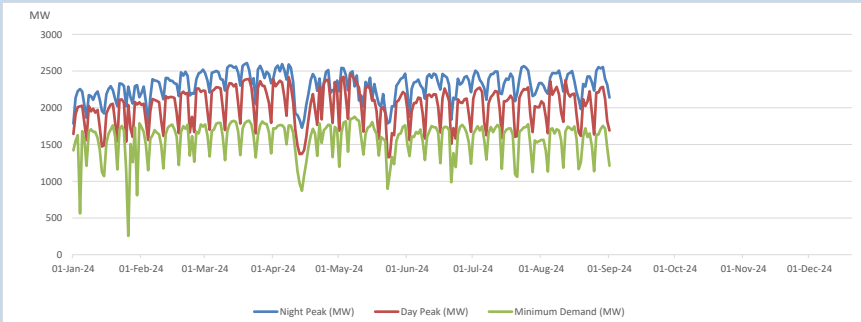
2. Comparison of Total Reservoir Storage Levels with Past Years



3. Variation of Major Hydro Reservoir Levels in the current year (GWh)

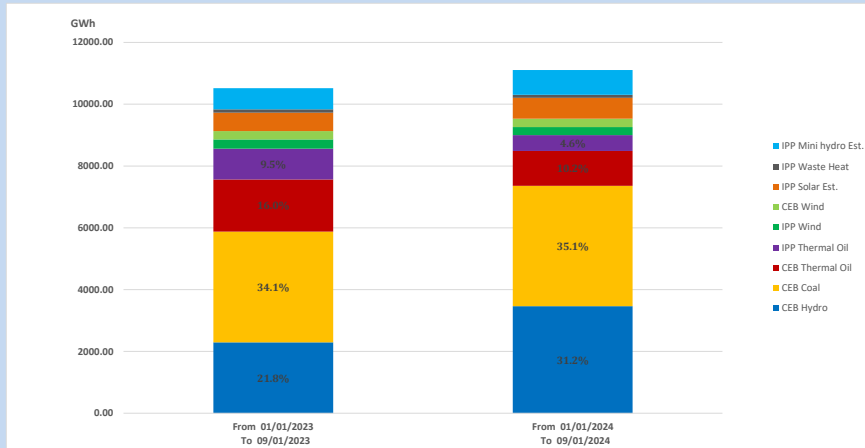


4. Variation of Demand during the current year



The above figures are excluding contribution from roof top solar, non telemetered solar and mini hydro plants

5. Cumulative Dispatch Comparison with Last Year



Cumulative dispatch

From 01/01/2023 To 09/01/2023

10518 GWh

From 01/01/2024 To 09/01/2024

11104 GWh

The above figures are including contribution from roof top solar, non telemetered solar and mini hydro plants)

Unserviced energy due to power cuts has been excluded in 2023

Thermal Power Plant - Fuel types

Table 08

Power Station	Primary Fuel
CEB Thermal	
Sapugaskanda 1	Heavy Fuel
Sapugaskanda 2	Heavy Fuel
Kelanitissa Small Gas Turbines	Auto Diesel
GT 7 - Kelanitissa	Auto Diesel
Kelanitissa CCY	Naphtha or Diesel
Lakvijaya 1	Coal
Lakvijaya 2	Coal
Lakvijaya 3	Coal
Uthuru Janani	Heavy Fuel
Barge CEB	Heavy Fuel
KCCPS -2	Auto Diesel

Power Station	Primary Fuel
Private Thermal	
West Coast	Auto Diesel / Heavy Fuel
Sobadhanavi	Auto Diesel

6. Installed System Capacity

Table 09

	Installed Capacity (MW)
CEB Hydro	1530
CEB Coal	810
CEB Thermal Oil	786
IPP Thermal Oil (West Coast & Sobadhanavi)	482
IPP Wind	163
CEB Wind	100
Mini Hydro	422
IPP Waste heat + Biomass	54
IPP Solar	137
Rooftop Solar (Ordinary)	343
Rooftop Solar (LT Bulk)	289
Rooftop Solar (HT Bulk)	84

Data Source - Monthly Review Report - May 2024 for NCRE installed capacities