

# Generation and Reservoirs Statistics

August 25, 2024



**PUBLIC UTILITIES COMMISSION OF SRI LANKA**

# 1. Daily Generation Mix

August 25, 2024

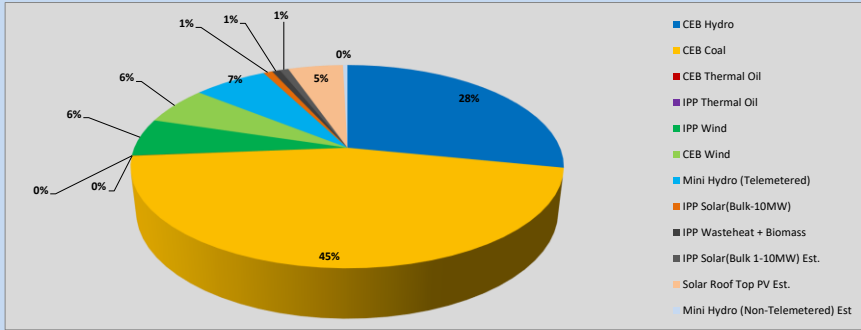


Table 01

	Generation (MWh)
CEB Hydro	11031
CEB Coal	17859
CEB Thermal Oil	11
IPP Thermal Oil	0
IPP Wind	2356
CEB Wind	2376
Mini Hydro (Telemetered)	2585
IPP Solar (Bulk)	314
IPP Waste heat + Biomass	281
<b>Total Generation (Excluding estimated figures)</b>	<b>36,813</b>
* Estimated unserved energy	0
* Estimated Mini Hydro (Non telemetered)	156
* Estimated IPP Solar PV (Bulk 1-10MW)	304
* Estimated Solar Roof Top PV	1920
<b>Total Generation (Including estimated figures)</b>	<b>39,193</b>

\* Estimated figures of CEB generation report

## 1.1 Cumulative Dispatch - 2024

Table 02 - Current Month

Category	Dispatch (GWh)	
CEB Hydro	367	32.50%
CEB Coal	388	34.35%
CEB Thermal Oil	119	10.57%
IPP Thermal	27	2.35%
SPP Wind	31	2.74%
CEB Wind	37	3.25%
Mini Hydro *	90	7.96%
IPP Solar *	63	5.62%
IPP Waste heat + BMP	7	0.65%
<b>Total</b>	<b>1,128</b>	

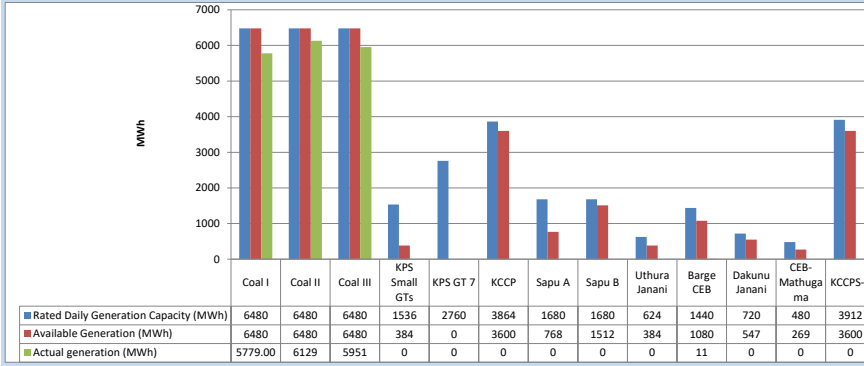
Table 03 - Current Year

Category	Dispatch (GWh)	
CEB Hydro	3,380	31.36%
CEB Coal	3,763	34.90%
CEB Thermal Oil	1,103	10.23%
IPP Thermal	502	4.66%
SPP Wind	249	2.31%
CEB Wind	252	2.33%
Mini Hydro *	777	7.20%
IPP Solar *	658	6.11%
IPP Waste heat	96	0.89%
<b>Total</b>	<b>10,780</b>	

\*Including estimated contribution from non telemetered plants

### 1.2 CEB owned Thermal Plant Dispatch

August 25, 2024

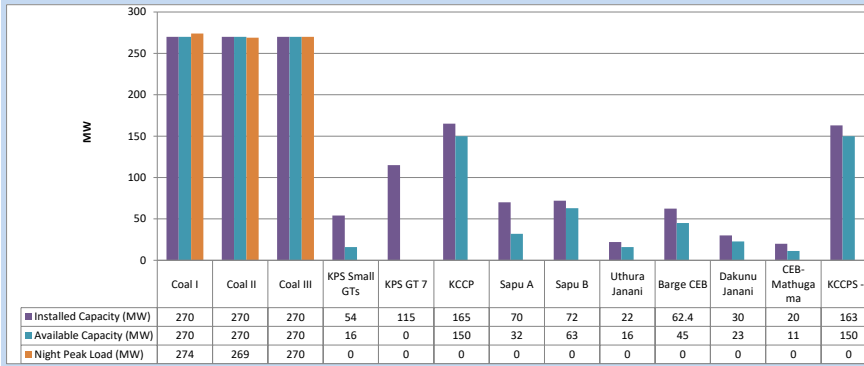


Available Generation is estimated based on plant availability at 6.00am on

August 26, 2024

### 1.3 CEB owned Thermal Plant Loading at the Night Peak

August 25, 2024

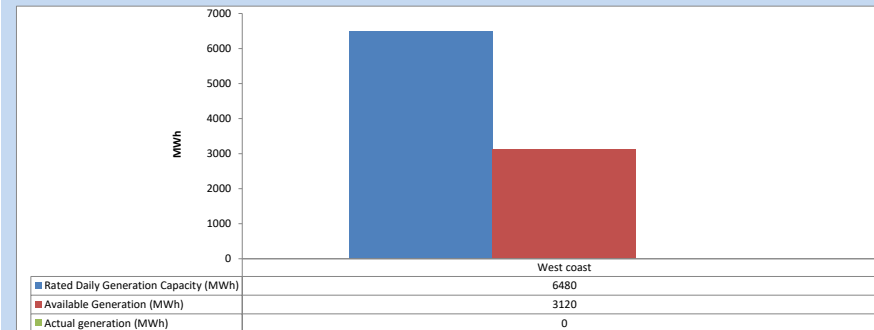


Plant availability is recorded at 6.00 am on

August 26, 2024

### 1.4 IPP owned Thermal Plant Dispatch

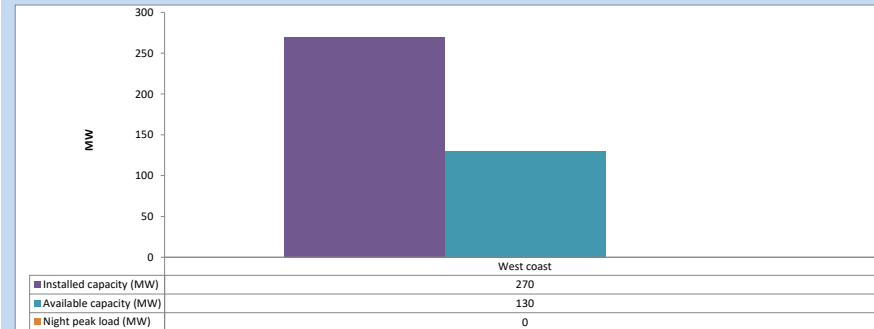
August 25, 2024



Available Generation is estimated based on plant availability at 6.00am on

August 26, 2024

### 1.5 IPP owned Thermal Plant Loading at the Night Peak

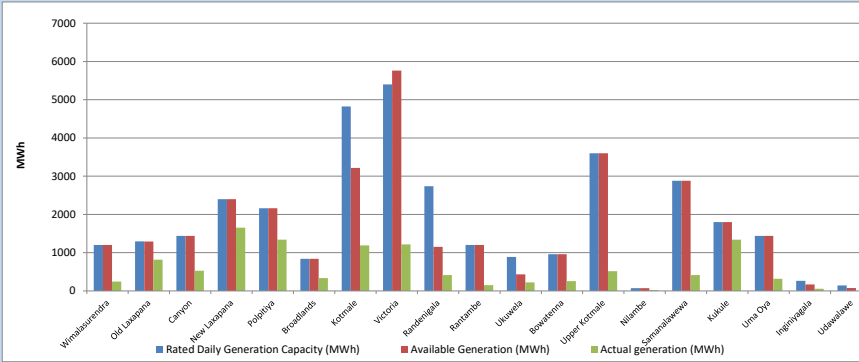


Plant availability is recorded at 6.00 am on

August 26, 2024

1.6 Major Hydro Plant Dispatch

August 25, 2024

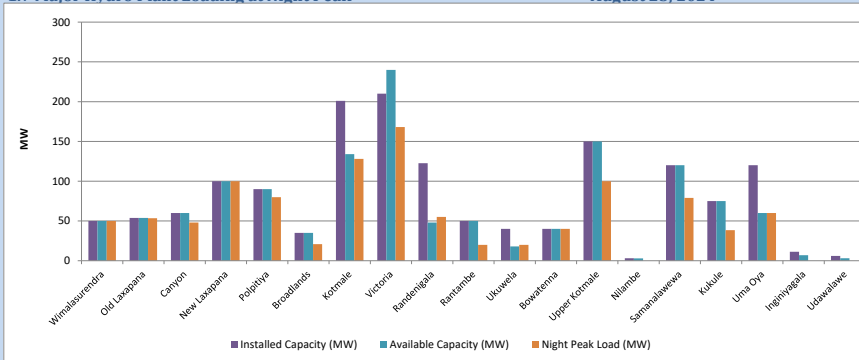


Available Generation is estimated based on plant availability at 6.00am on

August 26, 2024

1.7 Major Hydro Plant Loading at Night Peak

August 25, 2024



Plant availability is recorded at 6.00 am on

August 26, 2024

1.8 Summary of Major Plant performance

August 25, 2024

Table 04

Plant	Maximum Available Total Capacity (MW)	Plant Availability (MW)	Night peak Load (MW)	Plant Dispatch (MWh)
Wimalasurendra	50	50	50	243
Old Laxapana	54	54	54	818
Canyon	60	60	48	529
New Laxapana	100	100	100	1,652
Polpitiya	90	90	80	1,340
Broadlands	35	35	21	335
Kotmale	201	134	128	1,190
Victoria	210	240	168	1,218
Randenigala	123	48	55	413
Rantambe	50	50	20	149
Ukuwela	40	18	20	223
Bowatenna	40	40	40	256
Upper Kotmale	150	150	100	517
Nilambe	3	3	0	21
Samanalawewa	120	120	79	414
Kukule	75	75	38	1,341
Uma Oya	120	60	60	318
Inginiyagala	11	7	0	55
Udawalawe	6	3	0	0
Puttalam Coal I	270	270	274	5,779
Puttalam Coal II	270	270	269	6,129
Puttalam Coal III	270	270	270	5,951
KPS Small GTs	54	16	0	0
KPS GT 7	115	0	0	0
KCCP	165	150	0	0
Sapugaskanda A	70	32	0	0
Sapugaskanda B	72	63	0	0
Uthura Janani	22	16	0	0
Barge CEB	62	45	0	11
CEB-Hambantota	30	23	0	0
CEB-Mathugama	20	11	0	0
ACE Matara	24	0	0	0
Asia Power	50	0	0	0
KCCPS -2	163	150	0	0
West Coast	270	130	0	0
Nothern Power	36	0	0	0
ACE Embilipitiya	93	0	0	0
Sobadhanavi (Testing)	220	212	0	0
Total	3,594	2,783	2,204	36,814

Note-

Plant availability is the availability recorded at 6 am on

August 26, 2024

1.9 Contribution to the Night Peak in MW

August 25, 2024

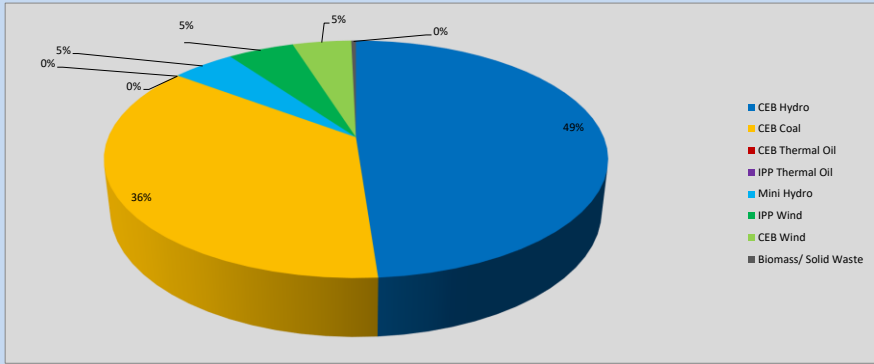


Table 05

CEB Hydro	1091	MW
CEB Coal	813	MW
CEB Thermal Oil	0	MW
IPP Thermal Oil	0	MW
Mini Hydro (Telemetered)	108	MW
IPP Wind	113.6	MW
CEB Wind	100.8	MW
Biomass/ Solid Waste	8	MW

Recorded Peak Demand Data

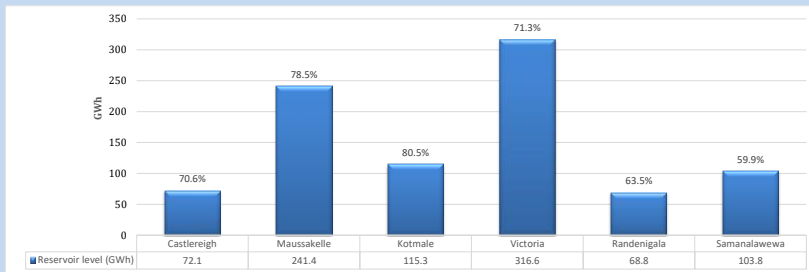
Table 06

Night Peak*	2,235	MW
Day Peak Maximum Demand	1,636	MW
Day Peak Minimum Demand	1,136	MW
Off Peak Minimum Demand	1,405	MW

Above figures are excluding contribution from roof top solar, non telemetered solar and mini hydro plants

1.10 Reservoir Levels -

as at 06.00 Hr on August 26, 2024



Total Reservoir Level  
% of Total capacity

918 GWh  
71.8%

1.11 Day Ahead Planned Demand Vs Actual Demand (Excluding non telemetered data)

August 25, 2024

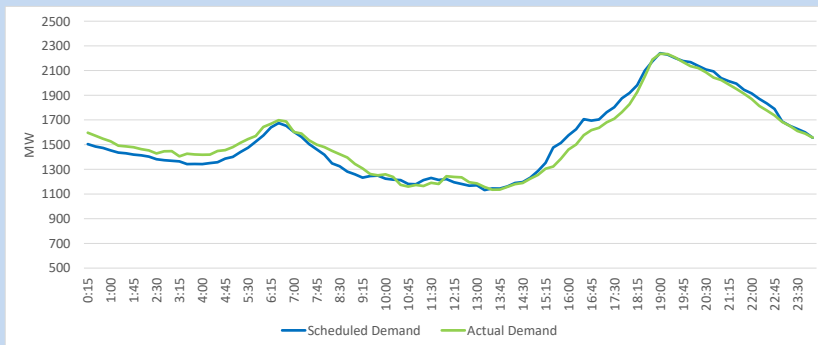
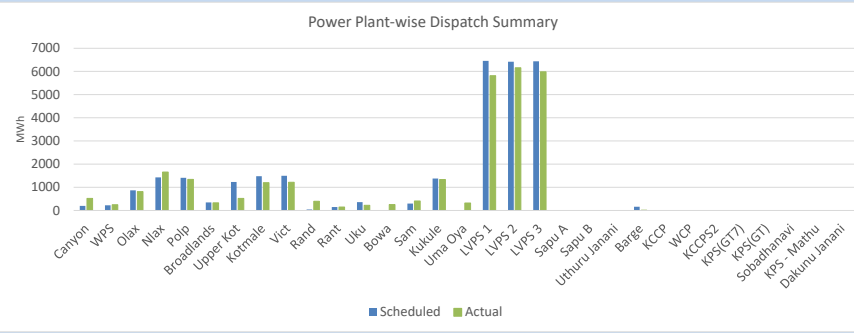


Table 07

Category	Scheduled Dispatch (MWh)	Actual Dispatch (MWh)	Deviation (MWh)
Major Hydro	10,910	10,937	27
CEB Coal	19,314	17,955	(1,359)
CEB Thermal Oil	161	11	(151)
IPP Thermal Oil	-	-	-
IPP Wind (Telemetered)	6,549	8,168	1,619
<b>Total</b>	<b>36,934</b>	<b>37,071</b>	<b>137</b>

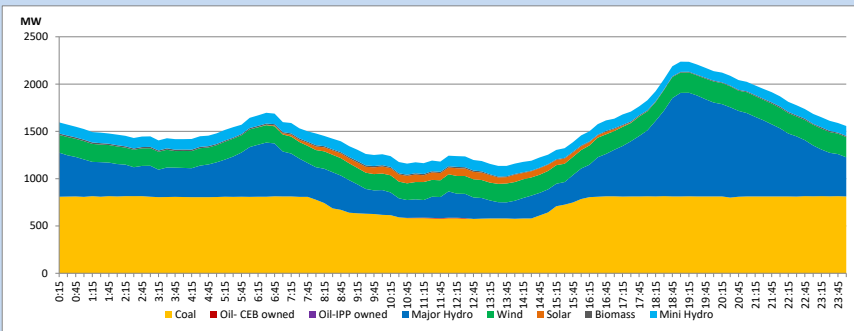
1.12 Power Plant-wise Dispatch Summary

August 25, 2024



1.13 Daily Load Curve

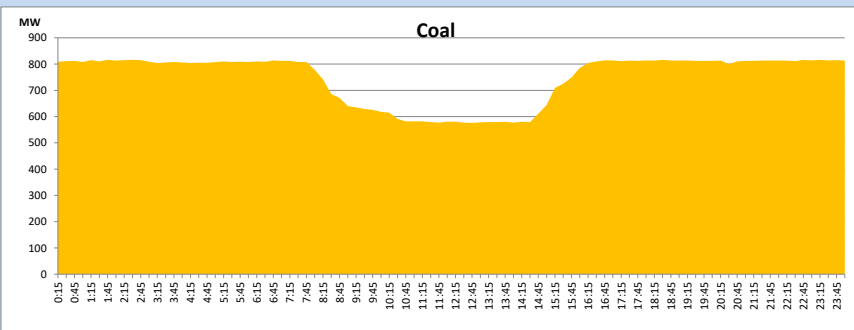
August 25, 2024



Solar and wind data is based on Telemetered Power Stations only

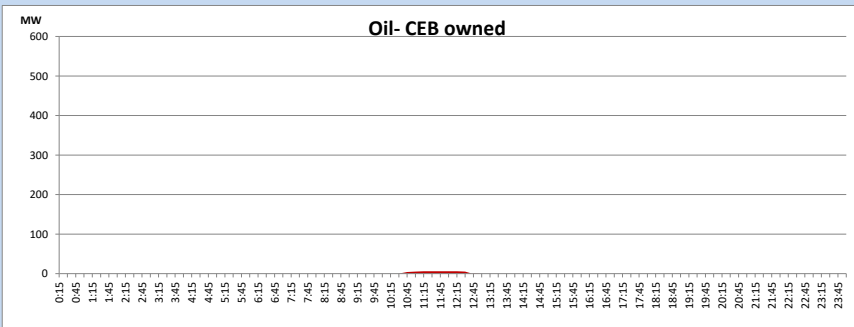
Coal Generation during

August 25, 2024

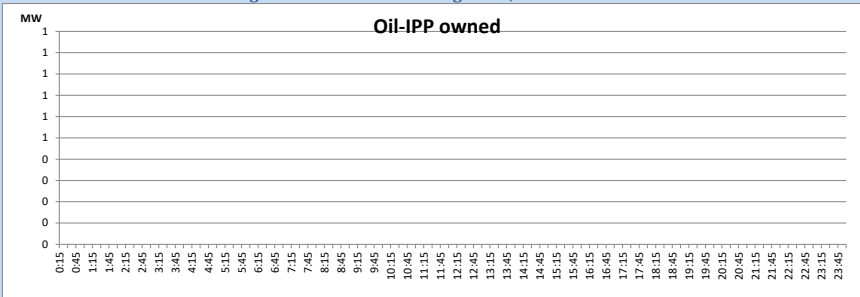


CEB Oil Plant Generation during

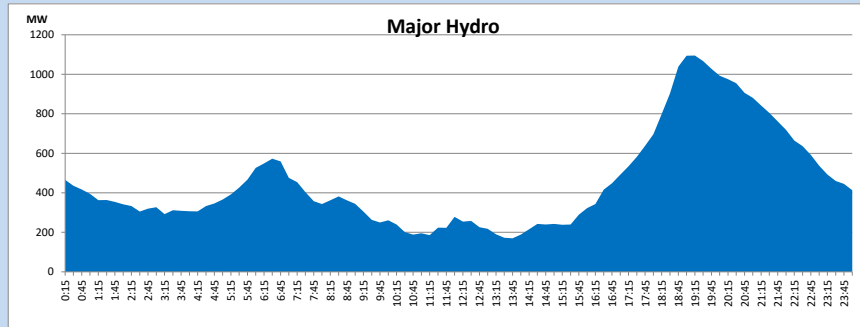
August 25, 2024



**IPP Oil Plant Generation during August 25, 2024**

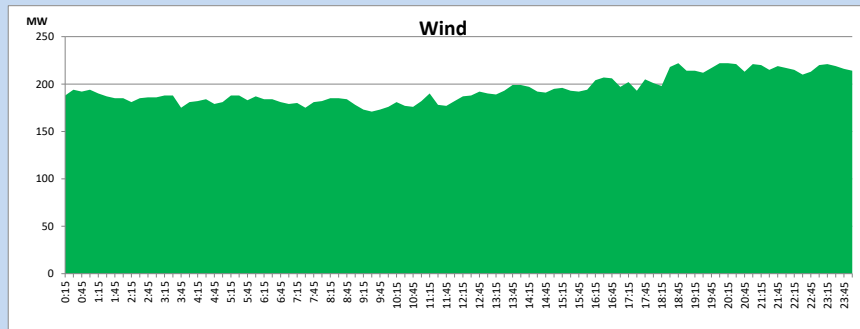


**Major Hydro Generation during August 25, 2024**



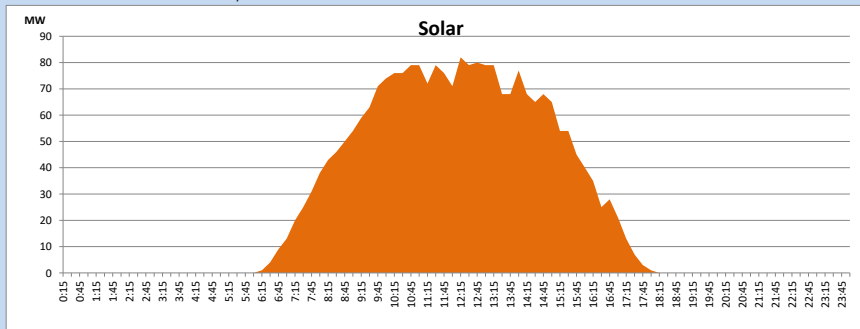
**Wind Generation during August 25, 2024**

Based on Telemetered Power Stations only



**Solar Generation during August 25, 2024**

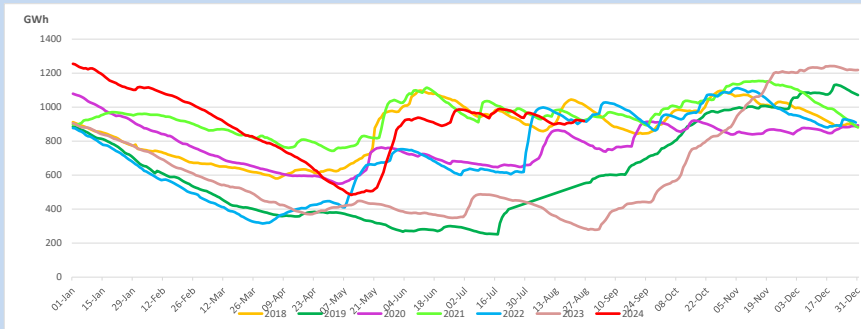
Based on Telemetered Power Stations only



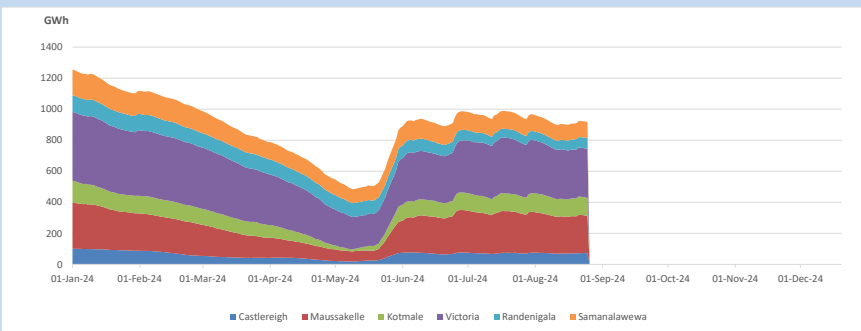
**1.14 Major Incidents reported during the day August 25, 2024**

- 1) Kalutara – Panadura – Pannipitiya 132kV cct tripped and A/R from all ends at 06:12hrs due to the operation of differential protection.
- 2) Thulhiriya - Kegalle 132kV cct D1 tripped from Thulhiriya end and tripped & A/R from Kegalle end at 17:46hrs due to the operation of differential protection. The cct was normalized at 18:51hrs.
- 3) Ampara – Mahiyanganaya 132kV cct tripped and A/R from both ends at 05:43hrs (26.08.2024) due to the operation of differential protection.

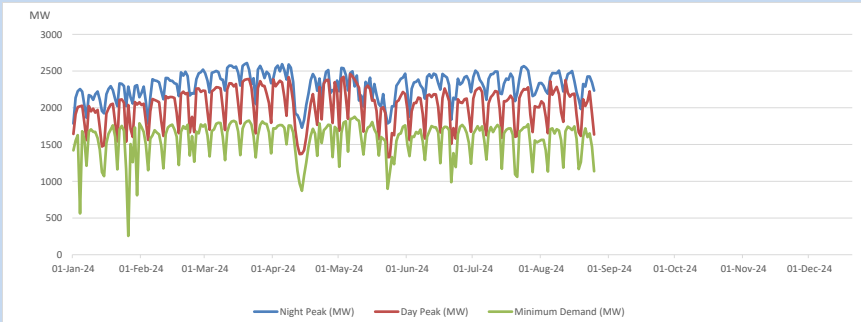
## 2. Comparison of Total Reservoir Storage Levels with Past Years



## 3. Variation of Major Hydro Reservoir Levels in the current year (GWh)



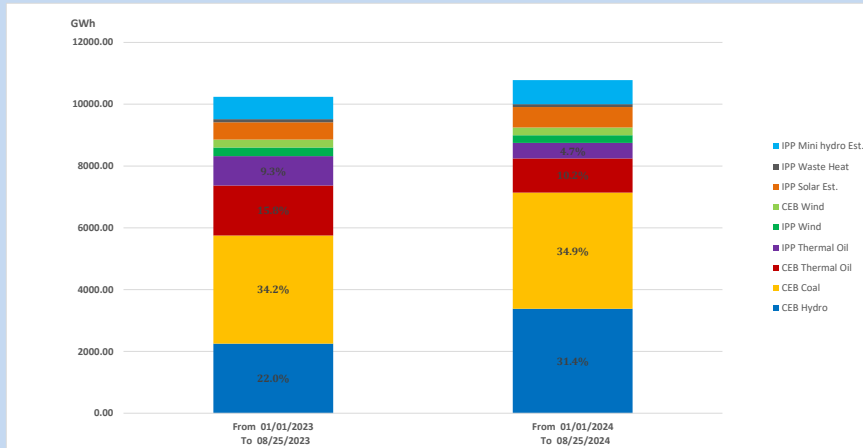
## 4. Variation of Demand during the current year



The above figures are excluding contribution from roof top solar, non telemetered solar and mini hydro plants



## 5. Cumulative Dispatch Comparison with Last Year



Cumulative dispatch  
 From 01/01/2023 To 08/25/2023 **10242 GWh**  
 From 01/01/2024 To 08/25/2024 **10780 GWh**

The above figures are including contribution from roof top solar, non telemetered solar and mini hydro plants)  
 Unserviced energy due to power cuts has been excluded in 2023

### Thermal Power Plant - Fuel types

Table 08

Power Station	Primary Fuel
CEB Thermal	
Sapugaskanda 1	Heavy Fuel
Sapugaskanda 2	Heavy Fuel
Kelanitissa Small Gas Turbines	Auto Diesel
GT 7 - Kelanitissa	Auto Diesel
Kelanitissa CCY	Naphtha or Diesel
Lakvijaya 1	Coal
Lakvijaya 2	Coal
Lakvijaya 3	Coal
Uthuru Janani	Heavy Fuel
Barge CEB	Heavy Fuel
KCCPS -2	Auto Diesel

Power Station	Primary Fuel
Private Thermal	
West Coast	Auto Diesel / Heavy Fuel
Sobadhanavi	Auto Diesel

## 6. Installed System Capacity

Table 09

	Installed Capacity (MW)
CEB Hydro	1530
CEB Coal	810
CEB Thermal Oil	786
IPP Thermal Oil (West Coast)	270
IPP Wind	163
CEB Wind	100
Mini Hydro	422
IPP Waste heat + Biomass	54
IPP Solar	137
Rooftop Solar (Ordinary)	343
Rooftop Solar (LT Bulk)	289
Rooftop Solar (HT Bulk)	84

Data Source - Monthly Review Report [Mar-2024]