

Generation and Reservoirs Statistics

August 22, 2024



PUBLIC UTILITIES COMMISSION OF SRI LANKA

1. Daily Generation Mix

August 22, 2024

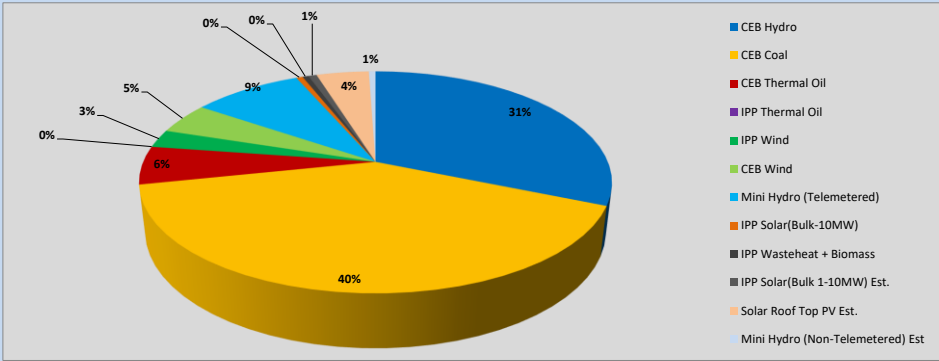


Table 01

	Generation (MWh)
CEB Hydro	13960
CEB Coal	18097
CEB Thermal Oil	2487
IPP Thermal Oil	0
IPP Wind	1179
CEB Wind	2037
Mini Hydro (Telemetered)	4010
IPP Solar (Bulk)	234
IPP Waste heat + Biomass	221
Total Generation (Excluding estimated figures)	42,225
* Estimated unserved energy	0
* Estimated Mini Hydro (Non telemetered)	242
* Estimated IPP Solar PV (Bulk 1-10MW)	304
* Estimated Solar Roof Top PV	1920
Total Generation (Including estimated figures)	44,691

* Estimated figures of CEB generation report

1.1 Cumulative Dispatch - 2024

Table 02 - Current Month

Category	Dispatch (GWh)	
CEB Hydro	329	32.94%
CEB Coal	331	33.12%
CEB Thermal Oil	115	11.51%
IPP Thermal	27	2.66%
SPP Wind	25	2.49%
CEB Wind	30	2.98%
Mini Hydro *	80	8.05%
IPP Solar *	56	5.59%
IPP Waste heat + BMP	6	0.64%
Total	999	

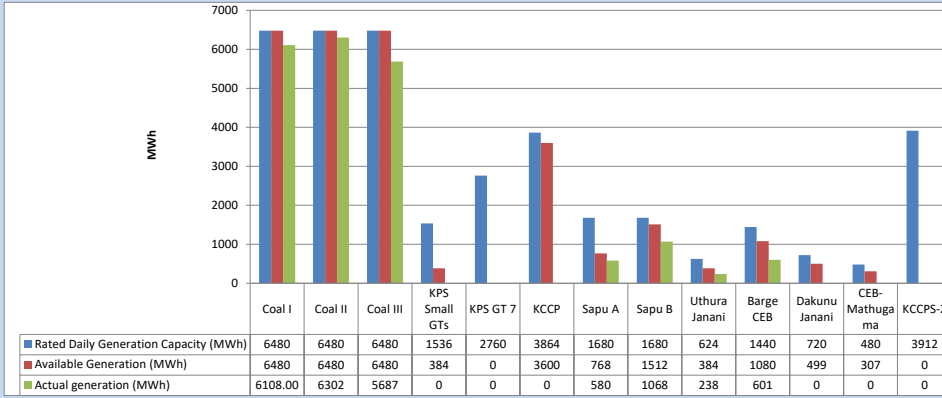
Table 03 - Current Year

Category	Dispatch (GWh)	
CEB Hydro	3,343	31.39%
CEB Coal	3,706	34.80%
CEB Thermal Oil	1,099	10.31%
IPP Thermal	502	4.72%
SPP Wind	243	2.28%
CEB Wind	245	2.30%
Mini Hydro *	767	7.20%
IPP Solar *	651	6.11%
IPP Waste heat	95	0.89%
Total	10,650	

*Including estimated contribution from non telemetered plants

1.2 CEB owned Thermal Plant Dispatch

August 22, 2024

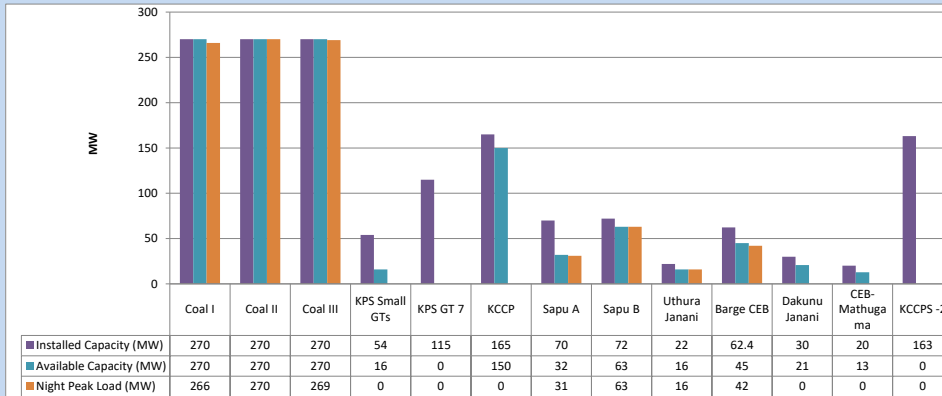


Available Generation is estimated based on plant availability at 6.00am on

August 23, 2024

1.3 CEB owned Thermal Plant Loading at the Night Peak

August 22, 2024

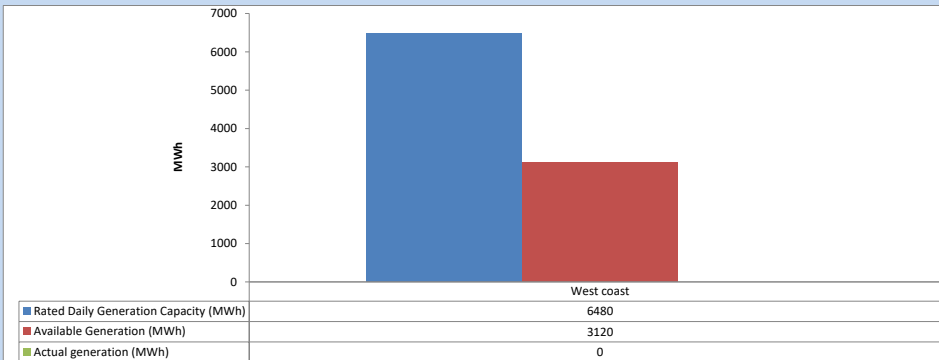


Plant availability is recorded at 6.00 am on

August 23, 2024

1.4 IPP owned Thermal Plant Dispatch

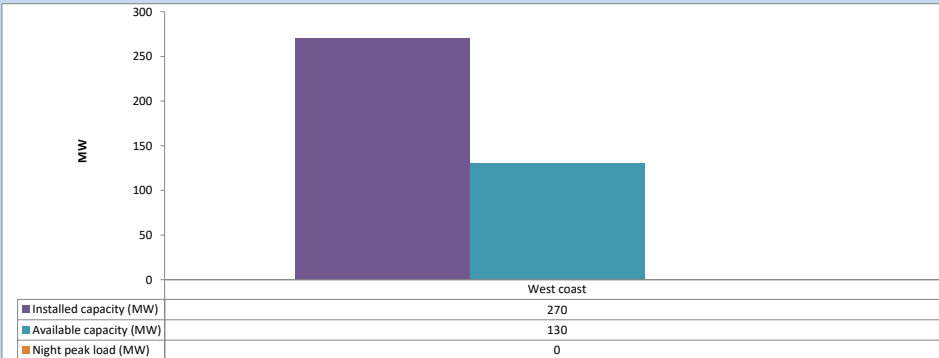
August 22, 2024



Available Generation is estimated based on plant availability at 6.00am on

August 23, 2024

1.5 IPP owned Thermal Plant Loading at the Night Peak

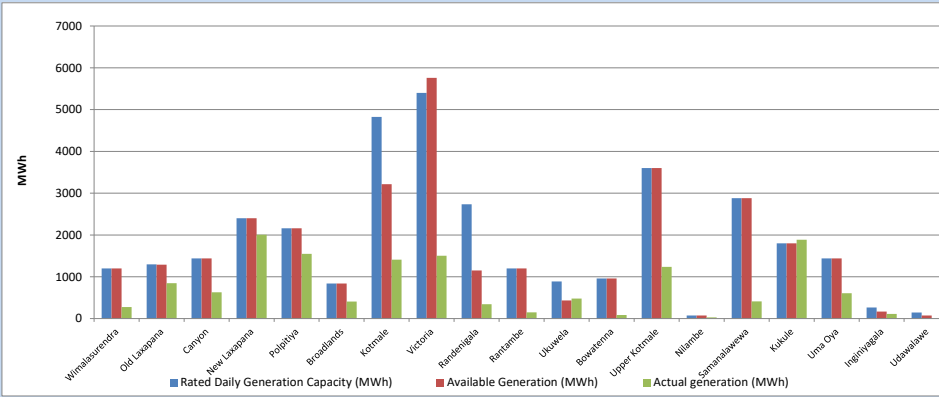


Plant availability is recorded at 6.00 am on

August 23, 2024

1.6 Major Hydro Plant Dispatch

August 22, 2024

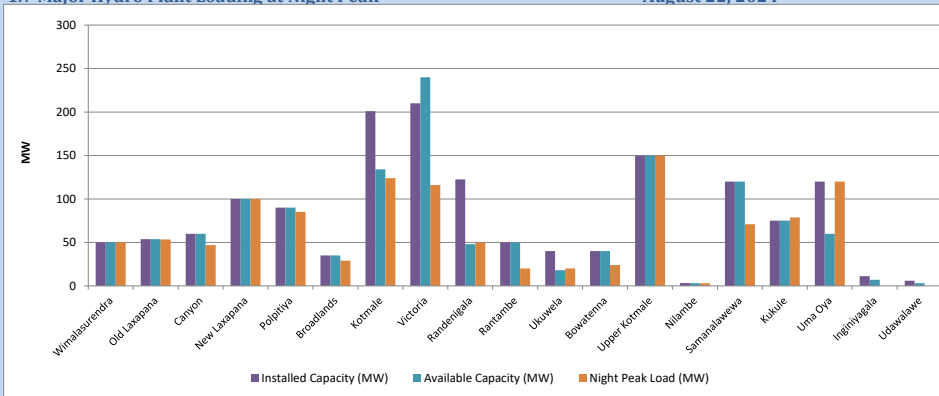


Available Generation is estimated based on plant availability at 6.00am on

August 23, 2024

1.7 Major Hydro Plant Loading at Night Peak

August 22, 2024



Plant availability is recorded at 6.00 am on

August 23, 2024

1.8 Summary of Major Plant performance

August 22, 2024

Table 04

Plant	Maximum Available Total Capacity (MW)	Plant Availability (MW)	Night peak Load (MW)	Plant Dispatch (MWh)
Wimalasurendra	50	50	50	275
Old Laxapana	54	54	53	846
Canyon	60	60	47	627
New Laxapana	100	100	100	2,005
Polpitiya	90	90	85	1,550
Broadlands	35	35	29	409
Kotmale	201	134	124	1,410
Victoria	210	240	116	1,503
Randenigala	123	48	50	345
Rantambe	50	50	20	150
Ukuwela	40	18	20	480
Bowatenna	40	40	24	86
Upper Kotmale	150	150	150	1,237
Nilambe	3	3	3	27
Samanalawewa	120	120	71	410
Kukule	75	75	79	1,886
Uma Oya	120	60	120	605
Inginipigala	11	7	0	110
Udawalawe	6	3	0	0
Puttalam Coal I	270	270	266	6,108
Puttalam Coal II	270	270	270	6,302
Puttalam Coal III	270	270	269	5,687
KPS Small GTs	54	16	0	0
KPS GT 7	115	0	0	0
KCCP	165	150	0	0
Sapugaskanda A	70	32	31	580
Sapugaskanda B	72	63	63	1,068
Uthura Janani	22	16	16	238
Barge CEB	62	45	42	601
CEB-Hambantota	30	21	0	0
CEB-Mathugama	20	13	0	0
ACE Matara	24	0	0	0
Asia Power	50	0	0	0
KCCPS -2	163	0	0	0
West Coast	270	130	0	0
Nothorn Power	36	0	0	0
ACE Embilipitiya	93	0	0	0
Sobadhanavi (Testing)	220	212	0	0
Total	3,594	2,633	2,396	42,226

Note-

Plant availability is the availability recorded at 6 am on

August 23, 2024

1.9 Contribution to the Night Peak in MW

August 22, 2024

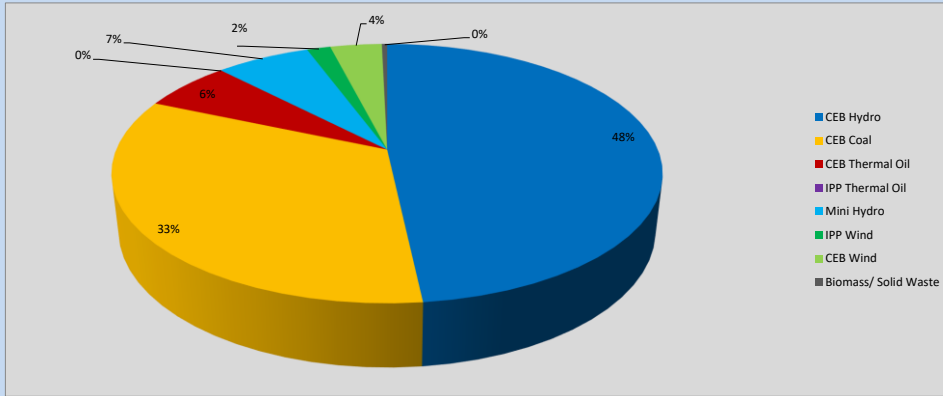


Table 05

CEB Hydro	1171	MW
CEB Coal	805	MW
CEB Thermal Oil	152	MW
IPP Thermal Oil	0	MW
Mini Hydro (Telemetered)	161	MW
IPP Wind	40.2	MW
CEB Wind	87.9	MW
Biomass/ Solid Waste	9	MW

Recorded Peak Demand Data

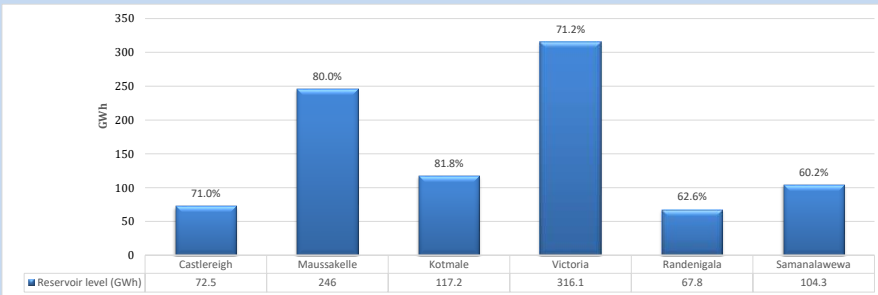
Table 06

Night Peak*	2,426	MW
Day Peak Maximum Demand	2,088	MW
Day Peak Minimum Demand	1,602	MW
Off Peak Minimum Demand	1,276	MW

Above figures are excluding contribution from roof top solar, non telemetered solar and mini hydro plants

1.10 Reservoir Levels -

as at 06.00 Hr on August 23, 2024



Total Reservoir Level: 923.9 GWh
 % of Total capacity: 72.3%

1.11 Day Ahead Planned Demand Vs Actual Demand (Excluding non telemetered data)

August 22, 2024

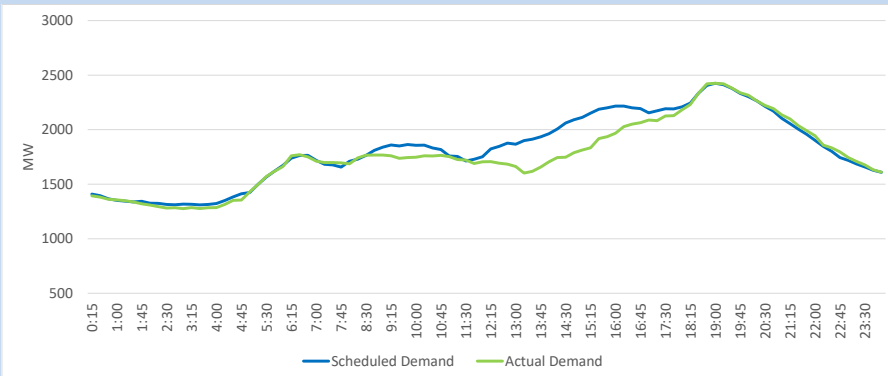
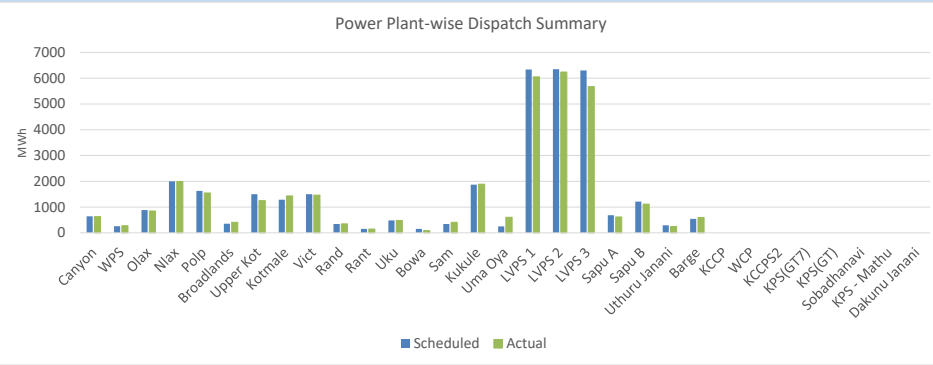


Table 07

Category	Scheduled Dispatch (MWh)	Actual Dispatch (MWh)	Deviation (MWh)
Major Hydro	13,628	13,801	173
CEB Coal	18,983	17,960	(1,023)
CEB Thermal Oil	2,726	2,572	(154)
IPP Thermal Oil	-	-	-
NCRE (Telemetered)	8,340	7,925	(415)
Total	43,676	42,257	-1420

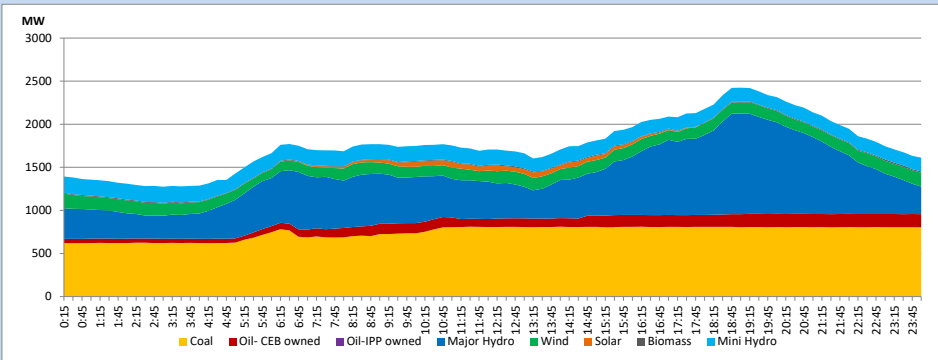
1.12 Power Plant-wise Dispatch Summary

August 22, 2024



1.13 Daily Load Curve

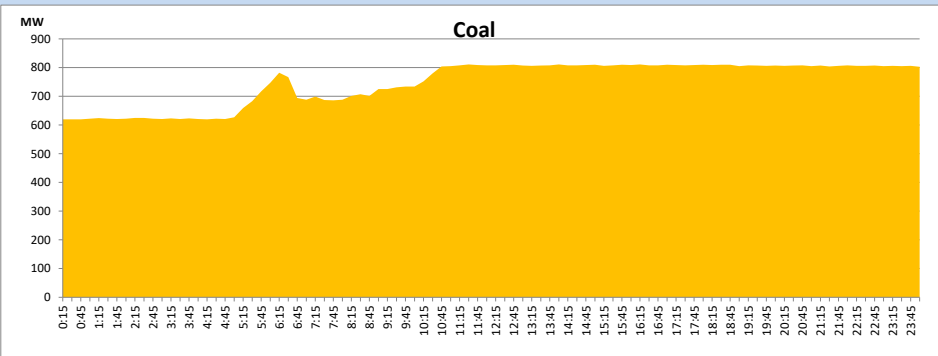
August 22, 2024



Solar and wind data is based on Telemetered Power Stations only

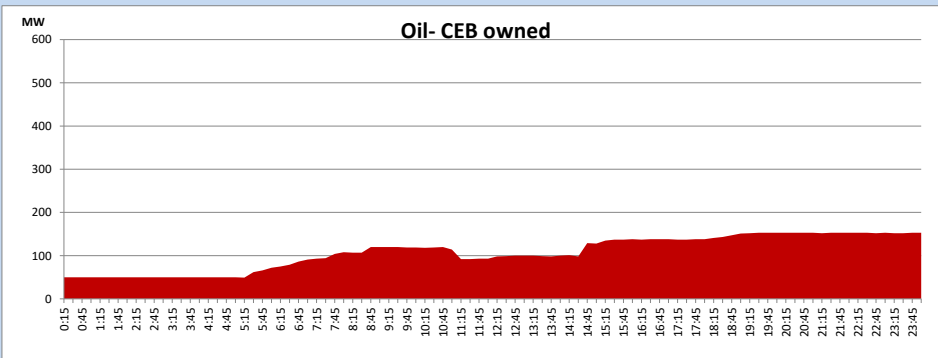
Coal Generation during

August 22, 2024



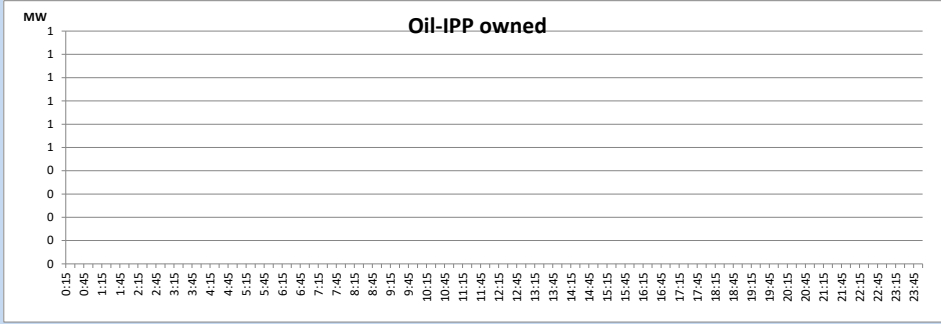
CEB Oil Plant Generation during

August 22, 2024



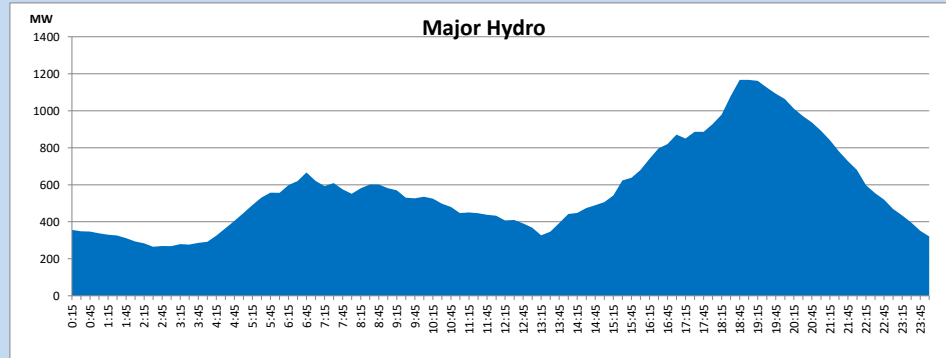
IPP Oil Plant Generation during

August 22, 2024



Major Hydro Generation during

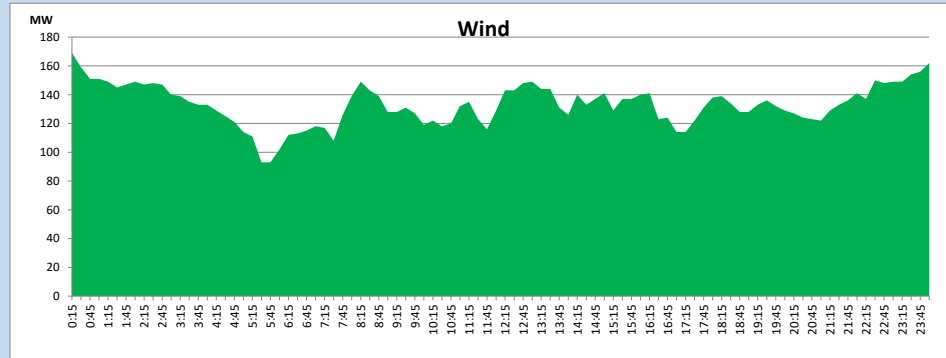
August 22, 2024



Wind Generation during

August 22, 2024

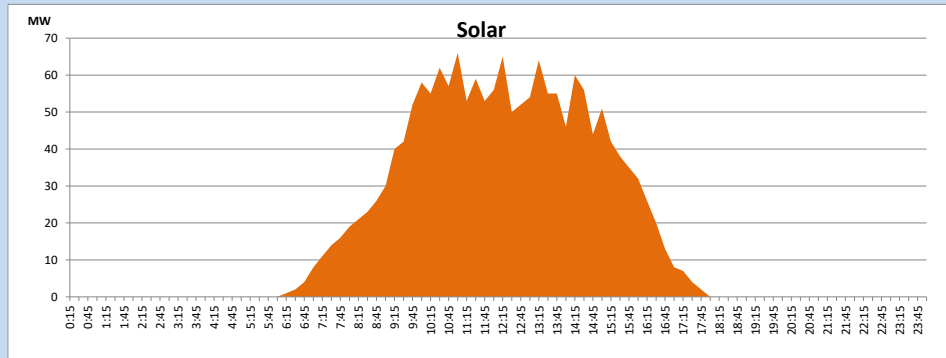
Based on Telemetered Power Stations only



Solar Generation during

August 22, 2024

Based on Telemetered Power Stations only

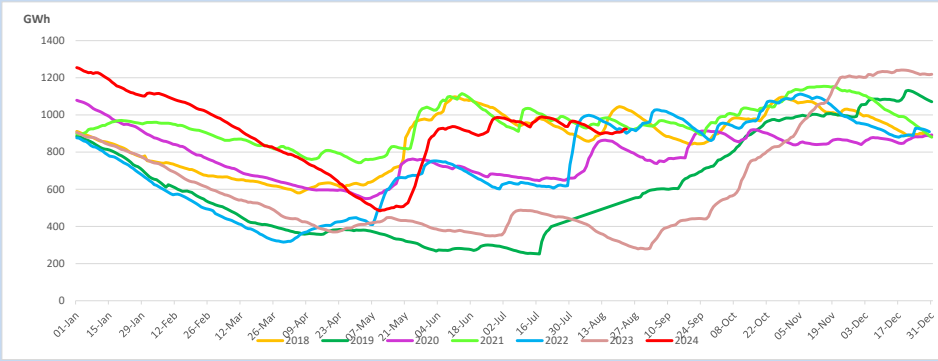


1.14 Major Incidents reported during the day

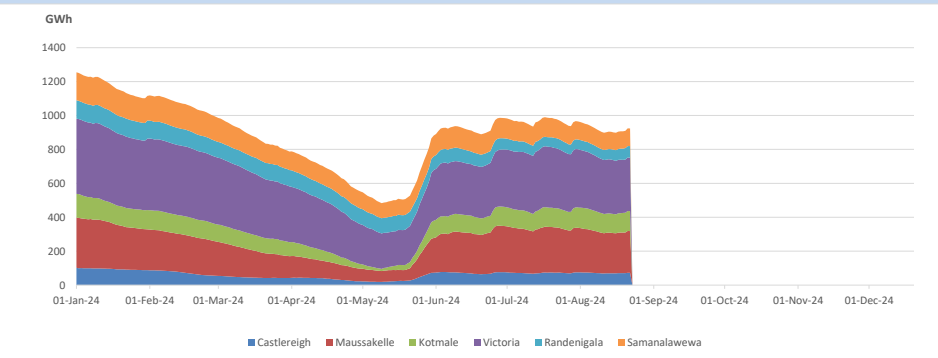
August 22, 2024

- Polpitiya Unit 02 tripped at 11:43hrs, rejecting 30MW from the system. Polpitiya Unit 02 resumed generation at 12:41hrs.
- Padukka - New Polpitiya 220kV cct 01 tripped and A/R from both ends at 16:52hrs due to the operation of distance protection.
- New Chilaw 220/132kV T/F 02 tripped from both sides at 22:51hrs. The T/F was restored at 23:20hrs.
- Kukule pond spilling continues to the present hour.

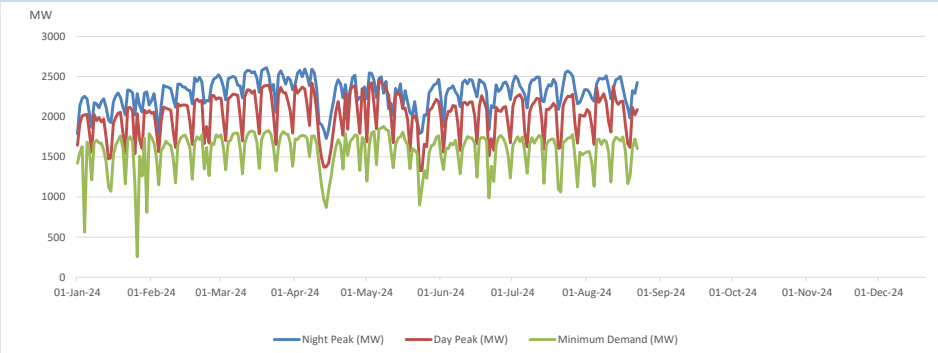
2. Comparison of Total Reservoir Storage Levels with Past Years



3. Variation of Major Hydro Reservoir Levels in the current year (GWh)

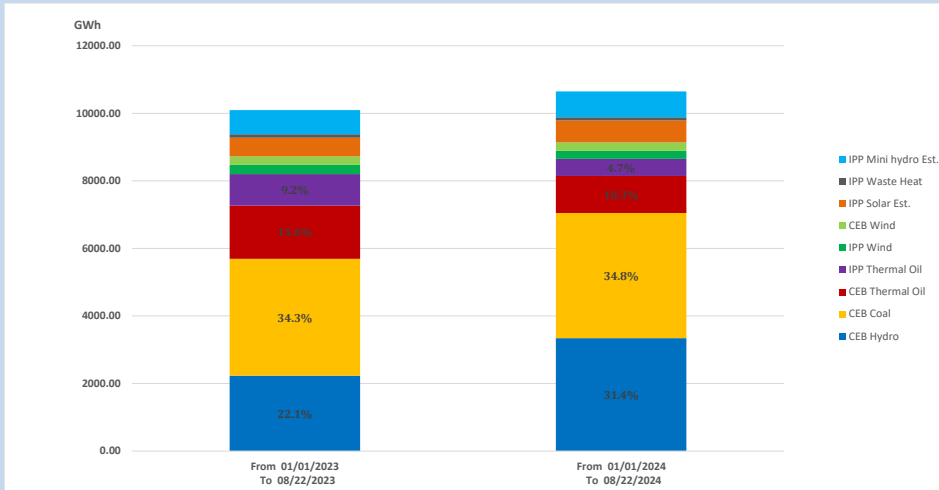


4. Variation of Demand during the current year



The above figures are excluding contribution from roof top solar, non telemetered solar and mini hydro plants

5. Cumulative Dispatch Comparison with Last Year



Cumulative dispatch

From 01/01/2023 To 08/22/2023

10093 GWh

From 01/01/2024 To 08/22/2024

10650 GWh

The above figures are including contribution from roof top solar, non telemetered solar and mini hydro plants)

Unserviced energy due to power cuts has been excluded in 2023

Thermal Power Plant - Fuel types

Table 08

Power Station	Primary Fuel
CEB Thermal	
Sapugaskanda 1	Heavy Fuel
Sapugaskanda 2	Heavy Fuel
Kelanitissa Small Gas Turbines	Auto Diesel
GT 7 - Kelanitissa	Auto Diesel
Kelanitissa CCY	Naphtha or Diesel
Lakvijaya 1	Coal
Lakvijaya 2	Coal
Lakvijaya 3	Coal
Uthuru Janani	Heavy Fuel
Barge CEB	Heavy Fuel
KCCPS -2	Auto Diesel

Power Station	Primary Fuel
Private Thermal	
West Coast	Auto Diesel / Heavy Fuel
Sobadhanavi	Auto Diesel

6. Installed System Capacity

Table 09

	Installed Capacity (MW)
CEB Hydro	1530
CEB Coal	810
CEB Thermal Oil	786
IPP Thermal Oil (West Coast)	270
IPP Wind	163
CEB Wind	100
Mini Hydro	422
IPP Waste heat + Biomass	54
IPP Solar	137
Rooftop Solar (Ordinary)	343
Rooftop Solar (LT Bulk)	289
Rooftop Solar (HT Bulk)	84

Data Source - Monthly Review Report [Mar-2024]