

Generation and Reservoirs Statistics

August 18, 2024



PUBLIC UTILITIES COMMISSION OF SRI LANKA

1. Daily Generation Mix

August 18, 2024

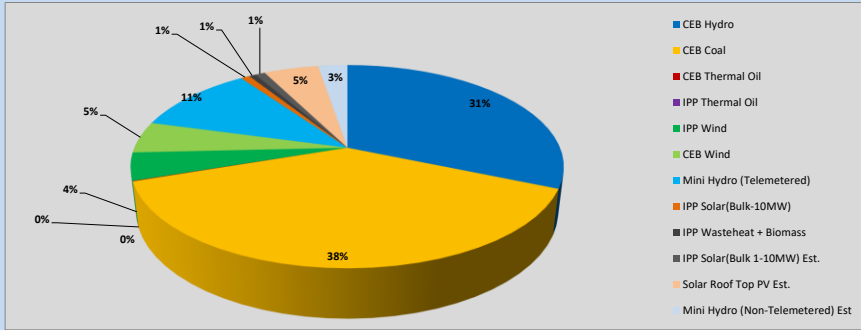


Table 01

	Generation (MWh)
CEB Hydro	12342
CEB Coal	15116
CEB Thermal Oil	26
IPP Thermal Oil	0
IPP Wind	1733
CEB Wind	1977
Mini Hydro (Telemetered)	4318
IPP Solar (Bulk)	317
IPP Waste heat + Biomass	227
Total Generation (Excluding estimated figures)	36,056
* Estimated unserved energy	0
* Estimated Mini Hydro (Non telemetered)	1024
* Estimated IPP Solar PV (Bulk 1-10MW)	353
* Estimated Solar Roof Top PV	1920
Total Generation (Including estimated figures)	39,353

* Estimated figures of CEB generation report

1.1 Cumulative Dispatch - 2024

Table 02 - Current Month

Category	Dispatch (GWh)	
CEB Hydro	277	33.55%
CEB Coal	261	31.59%
CEB Thermal Oil	108	13.04%
IPP Thermal	27	3.21%
SPP Wind	19	2.32%
CEB Wind	21	2.57%
Mini Hydro *	62	7.47%
IPP Solar *	46	5.58%
IPP Waste heat + BMP	6	0.67%
Total	826	

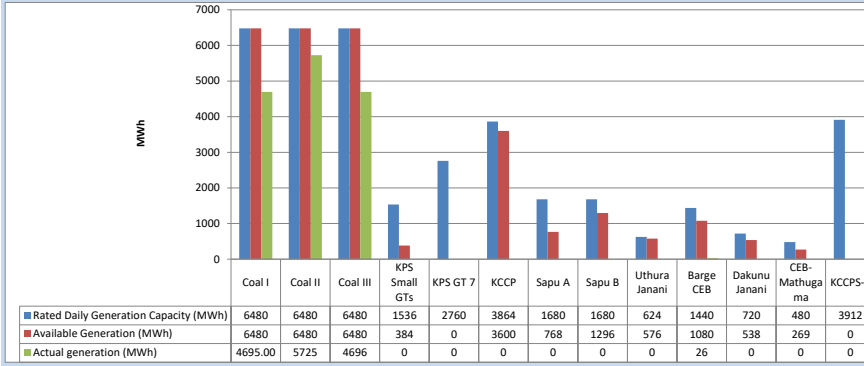
Table 03 - Current Year

Category	Dispatch (GWh)	
CEB Hydro	3,291	31.41%
CEB Coal	3,636	34.70%
CEB Thermal Oil	1,091	10.42%
IPP Thermal	502	4.79%
SPP Wind	237	2.26%
CEB Wind	236	2.25%
Mini Hydro *	748	7.14%
IPP Solar *	641	6.12%
IPP Waste heat	94	0.90%
Total	10,477	

*Including estimated contribution from non telemetered plants

1.2 CEB owned Thermal Plant Dispatch

August 18, 2024

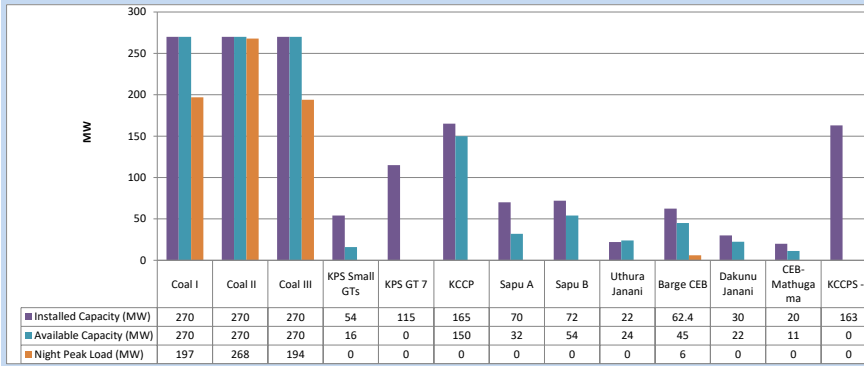


Available Generation is estimated based on plant availability at 6.00am on

August 19, 2024

1.3 CEB owned Thermal Plant Loading at the Night Peak

August 18, 2024

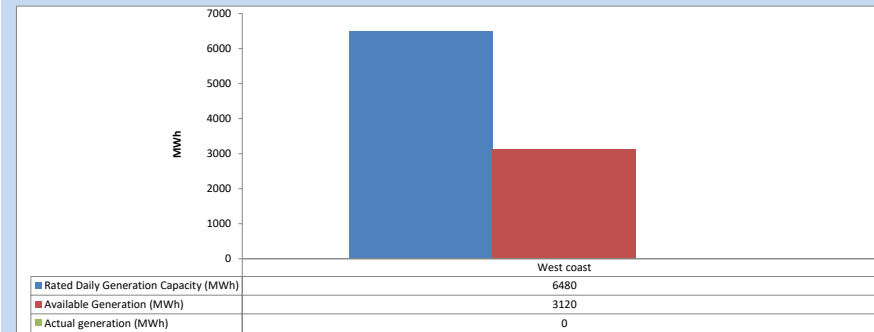


Plant availability is recorded at 6.00 am on

August 19, 2024

1.4 IPP owned Thermal Plant Dispatch

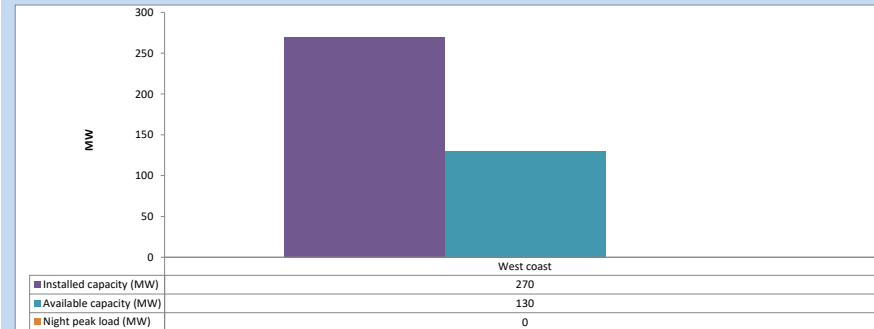
August 18, 2024



Available Generation is estimated based on plant availability at 6.00am on

August 19, 2024

1.5 IPP owned Thermal Plant Loading at the Night Peak

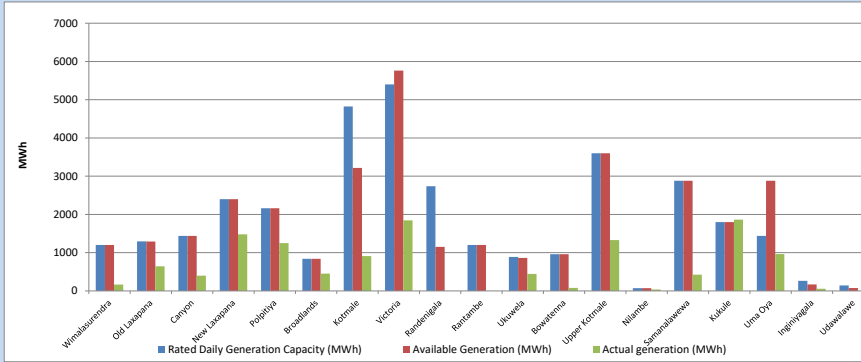


Plant availability is recorded at 6.00 am on

August 19, 2024

1.6 Major Hydro Plant Dispatch

August 18, 2024

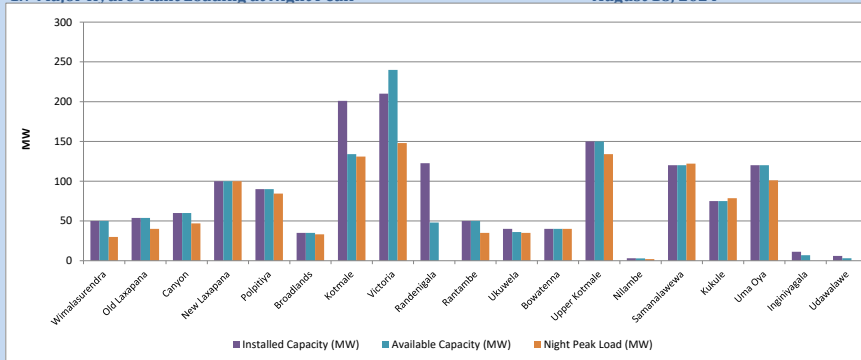


Available Generation is estimated based on plant availability at 6.00am on

August 19, 2024

1.7 Major Hydro Plant Loading at Night Peak

August 18, 2024



Plant availability is recorded at 6.00 am on

August 19, 2024

1.8 Summary of Major Plant performance

August 18, 2024

Table 04

Plant	Maximum Available Total Capacity (MW)	Plant Availability (MW)	Night peak Load (MW)	Plant Dispatch (MWh)
Wimalasurendra	50	50	30	166
Old Laxapana	54	54	40	643
Canyon	60	60	47	399
New Laxapana	100	100	100	1,479
Polpitiya	90	90	84	1,250
Broadlands	35	35	33	452
Kotmale	201	134	131	910
Victoria	210	240	148	1,846
Randeniigala	123	48	0	0
Rantambe	50	50	35	0
Ukuwela	40	36	35	445
Bowatenna	40	40	40	79
Upper Kotmale	150	150	134	1,328
Nilambe	3	3	2	38
Samanalawewa	120	120	122	424
Kukule	75	75	79	1,865
Uma Oya	120	120	101	963
Inginiyagala	11	7	0	56
Udawalawe	6	3	0	0
Puttalam Coal I	270	270	197	4,695
Puttalam Coal II	270	270	268	5,725
Puttalam Coal III	270	270	194	4,696
KPS Small GTs	54	16	0	0
KPS GT 7	115	0	0	0
KCCP	165	150	0	0
Sapugaskanda A	70	32	0	0
Sapugaskanda B	72	54	0	0
Uthura Janani	22	24	0	0
Barge CEB	62	45	6	26
CEB-Hambantota	30	22	0	0
CEB-Mathugama	20	11	0	0
ACE Matara	24	0	0	0
Asia Power	50	0	0	0
KCCPS -2	163	0	0	0
West Coast	270	130	0	0
Nothern Power	36	0	0	0
ACE Embilipitiya	93	0	0	0
Sobadhanavi (Testing)	220	0	0	0
Total	3,594	2,710	2,146	36,057

Note-

Plant availability is the availability recorded at 6 am on

August 19, 2024

1.9 Contribution to the Night Peak in MW

August 18, 2024

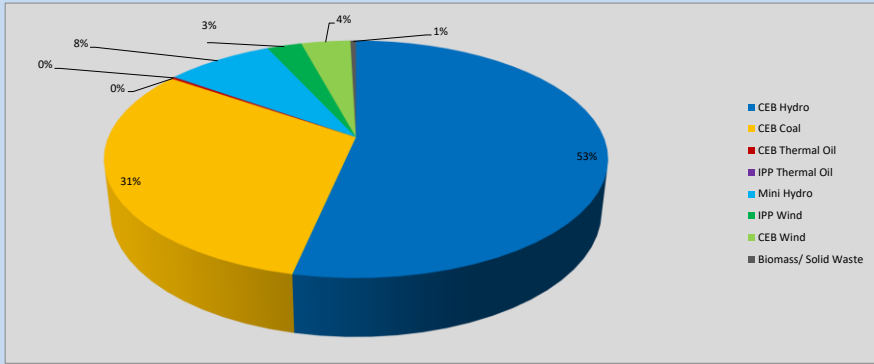


Table 05

CEB Hydro	1127	MW
CEB Coal	659	MW
CEB Thermal Oil	6	MW
IPP Thermal Oil	0	MW
Mini Hydro (Telemetered)	175	MW
IPP Wind	56.3	MW
CEB Wind	79.7	MW
Biomass/ Solid Waste	9	MW

Recorded Peak Demand Data

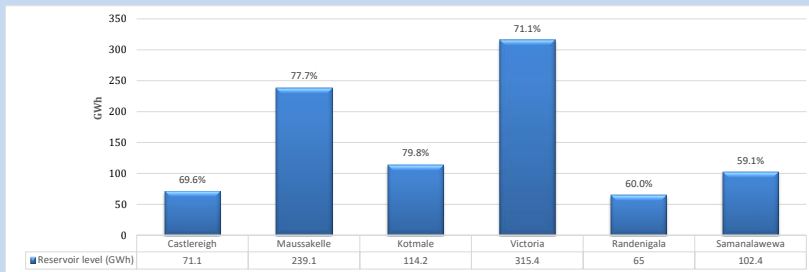
Table 06

Night Peak*	2,112	MW
Day Peak Maximum Demand	1,666	MW
Day Peak Minimum Demand	1,165	MW
Off Peak Minimum Demand	1,329	MW

Above figures are excluding contribution from roof top solar, non telemetered solar and mini hydro plants

1.10 Reservoir Levels -

as at 06.00 Hr on August 19, 2024



Total Reservoir Level 907.2 GWh
% of Total capacity 71.0%

1.11 Day Ahead Planned Demand Vs Actual Demand (Excluding non telemetered data)

August 18, 2024

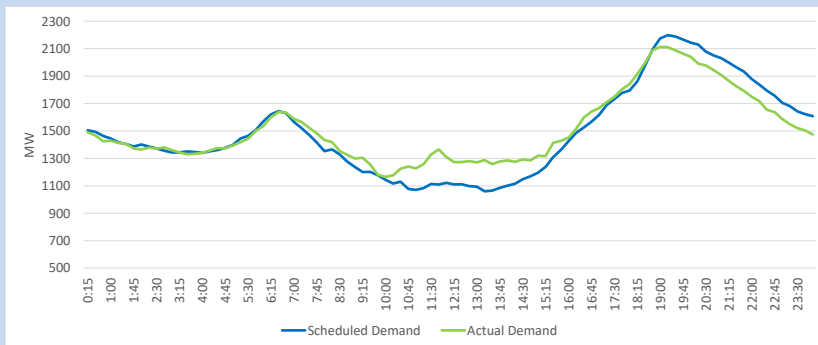
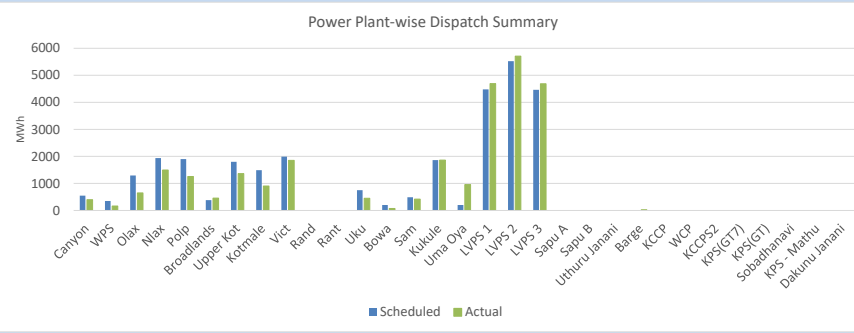


Table 07

Category	Scheduled Dispatch (MWh)	Actual Dispatch (MWh)	Deviation (MWh)
Major Hydro	15,203	12,312	(2,891)
CEB Coal	14,473	15,088	615
CEB Thermal Oil	-	24	24
IPP Thermal Oil	-	-	-
IPP (Telemetered)	6,115	8,848	2,732
Total	35,791	36,273	481

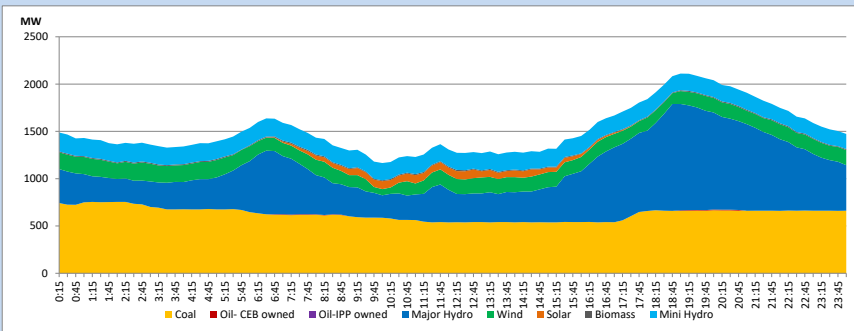
1.12 Power Plant-wise Dispatch Summary

August 18, 2024



1.13 Daily Load Curve

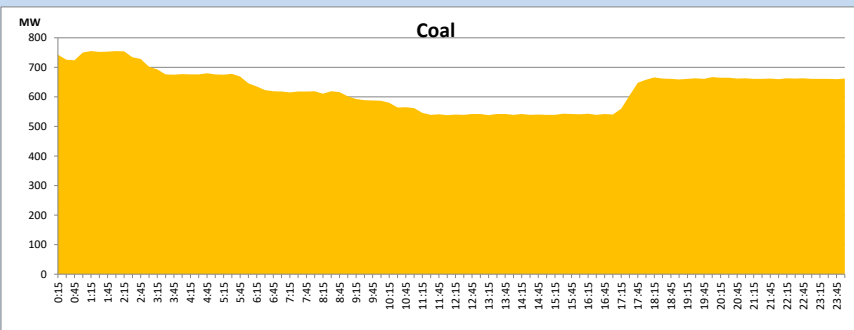
August 18, 2024



Solar and wind data is based on Telemetered Power Stations only

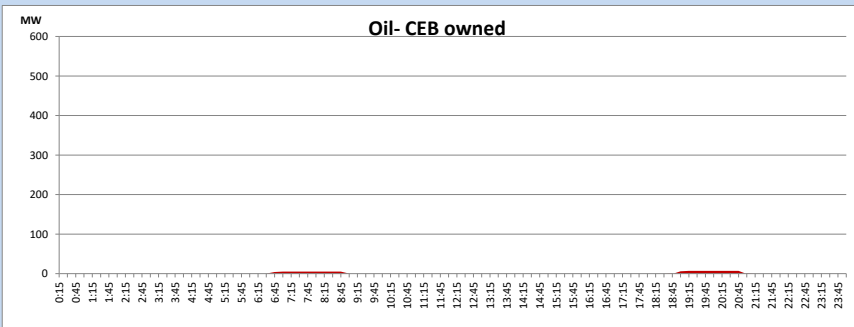
Coal Generation during

August 18, 2024

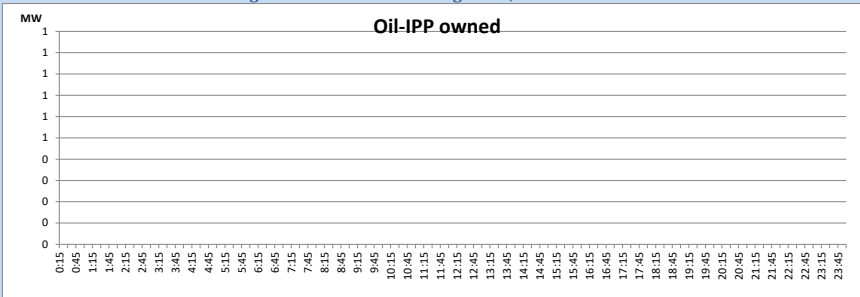


CEB Oil Plant Generation during

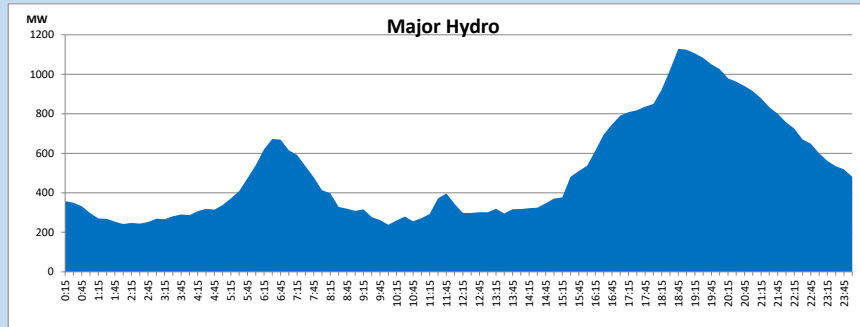
August 18, 2024



IPP Oil Plant Generation during August 18, 2024

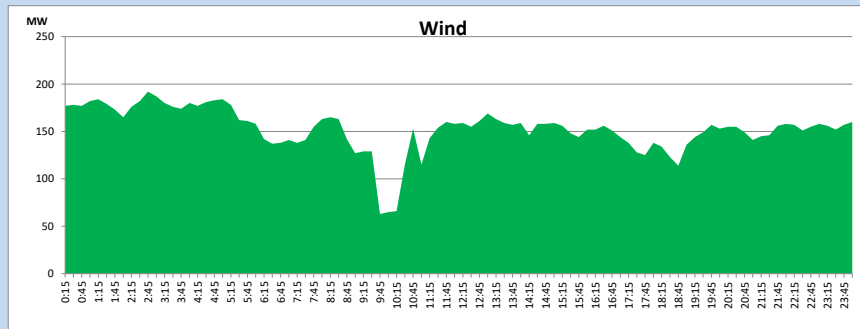


Major Hydro Generation during August 18, 2024



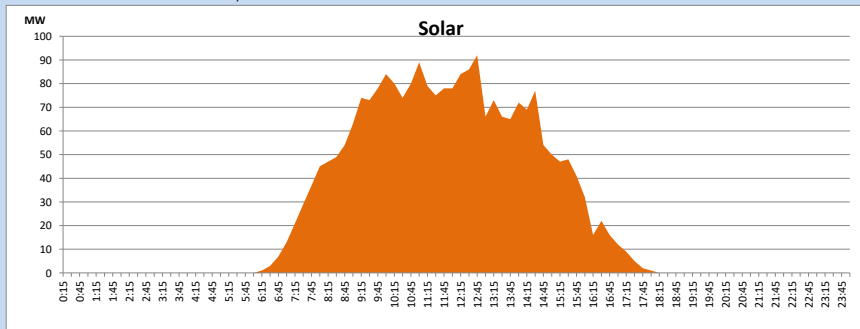
Wind Generation during August 18, 2024

Based on Telemetered Power Stations only



Solar Generation during August 18, 2024

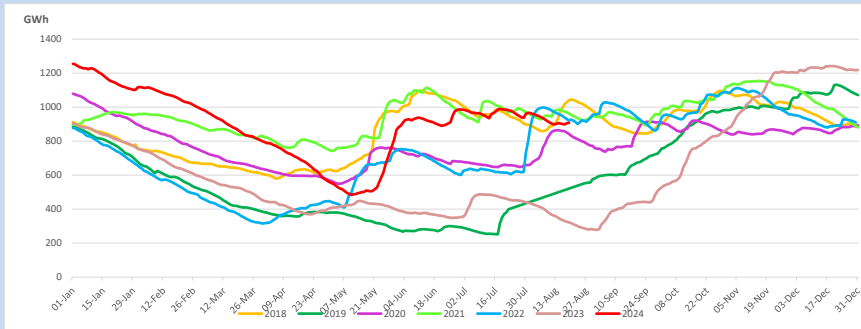
Based on Telemetered Power Stations only



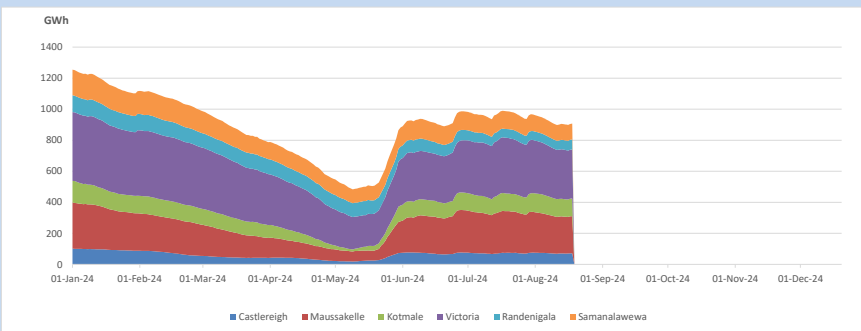
1.14 Major Incidents reported during the day August 18, 2024

- 1) Seethawaka 132/33kV T/F 03 tripped from both ends at 08:48hrs without any indications. The T/F normalized at 23:17hrs.
- 2) KCCPS2 cable tripped from Kelanithissa end at 09:57hrs. The cable yet to be normalized.
- 3) Kerawalapitiya Generator T/F 02 220kV cable (WCP line 02) tripped at 22:32hrs. The cable normalized at 01:28hrs (19.08.2024).
- 4) Kukule pond spilling continues to the present hour.

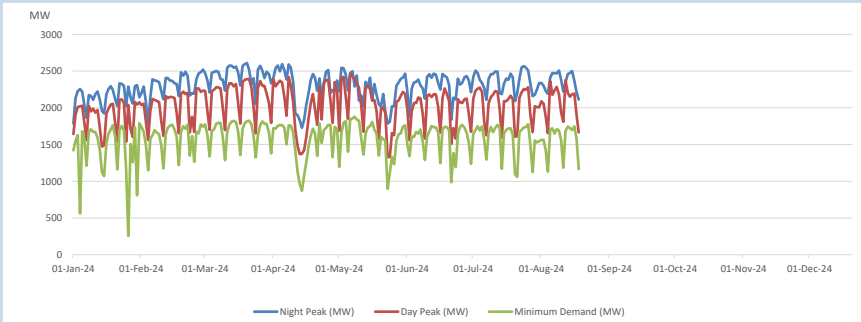
2. Comparison of Total Reservoir Storage Levels with Past Years



3. Variation of Major Hydro Reservoir Levels in the current year (GWh)

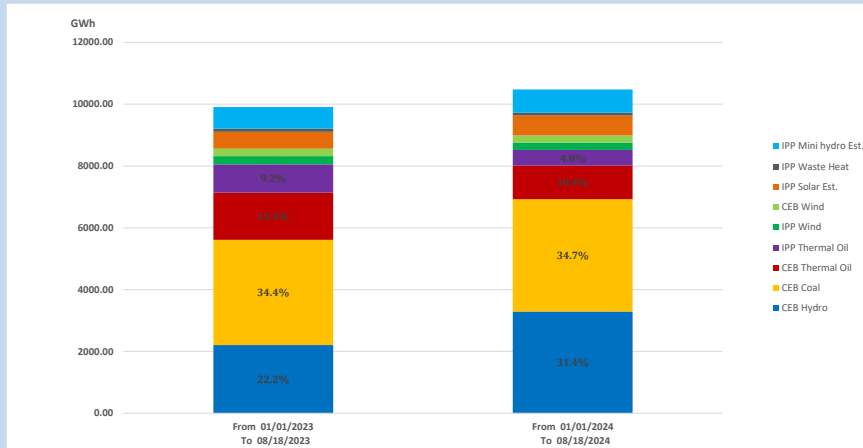


4. Variation of Demand during the current year



The above figures are excluding contribution from roof top solar, non telemetered solar and mini hydro plants

5. Cumulative Dispatch Comparison with Last Year



Cumulative dispatch

From 01/01/2023 To 08/18/2023

9908 GWh

From 01/01/2024 To 08/18/2024

10477 GWh

The above figures are including contribution from roof top solar, non telemetered solar and mini hydro plants)

Unserviced energy due to power cuts has been excluded in 2023

Thermal Power Plant - Fuel types

Table 08

Power Station	Primary Fuel
CEB Thermal	
Sapugaskanda 1	Heavy Fuel
Sapugaskanda 2	Heavy Fuel
Kelanitissa Small Gas Turbines	Auto Diesel
GT 7 - Kelanitissa	Auto Diesel
Kelanitissa CCY	Naphtha or Diesel
Lakvijaya 1	Coal
Lakvijaya 2	Coal
Lakvijaya 3	Coal
Uthuru Janani	Heavy Fuel
Barge CEB	Heavy Fuel
KCCPS -2	Auto Diesel

Power Station	Primary Fuel
Private Thermal	
West Coast	Auto Diesel / Heavy Fuel
Sobadhanavi	Auto Diesel

6. Installed System Capacity

Table 09

	Installed Capacity (MW)
CEB Hydro	1530
CEB Coal	810
CEB Thermal Oil	786
IPP Thermal Oil (West Coast)	270
IPP Wind	163
CEB Wind	100
Mini Hydro	422
IPP Waste heat + Biomass	54
IPP Solar	137
Rooftop Solar (Ordinary)	343
Rooftop Solar (LT Bulk)	289
Rooftop Solar (HT Bulk)	84

Data Source - Monthly Review Report [Mar-2024]