

# Generation and Reservoirs Statistics

August 17, 2024



**PUBLIC UTILITIES COMMISSION OF SRI LANKA**

# 1. Daily Generation Mix

August 17, 2024

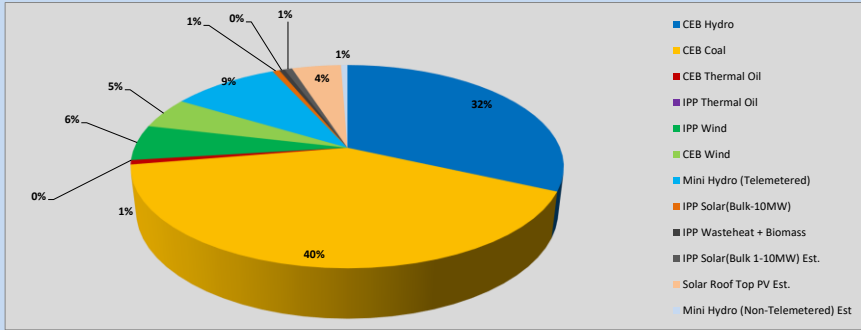


Table 01

	Generation (MWh)
CEB Hydro	13927
CEB Coal	17780
CEB Thermal Oil	305
IPP Thermal Oil	0
IPP Wind	2473
CEB Wind	2192
Mini Hydro (Telemetered)	4189
IPP Solar (Bulk)	275
IPP Waste heat + Biomass	209
<b>Total Generation (Excluding estimated figures)</b>	<b>41,350</b>
* Estimated unserved energy	0
* Estimated Mini Hydro (Non telemetered)	252
* Estimated IPP Solar PV (Bulk 1-10MW)	304
* Estimated Solar Roof Top PV	1920
<b>Total Generation (Including estimated figures)</b>	<b>43,826</b>

\* Estimated figures of CEB generation report

## 1.1 Cumulative Dispatch - 2024

Table 02 - Current Month

Category	Dispatch (GWh)	
CEB Hydro	265	33.66%
CEB Coal	246	31.25%
CEB Thermal Oil	108	13.69%
IPP Thermal	27	3.38%
SPP Wind	17	2.21%
CEB Wind	19	2.45%
Mini Hydro *	56	7.17%
IPP Solar *	43	5.53%
IPP Waste heat + BMP	5	0.68%
<b>Total</b>	<b>786</b>	

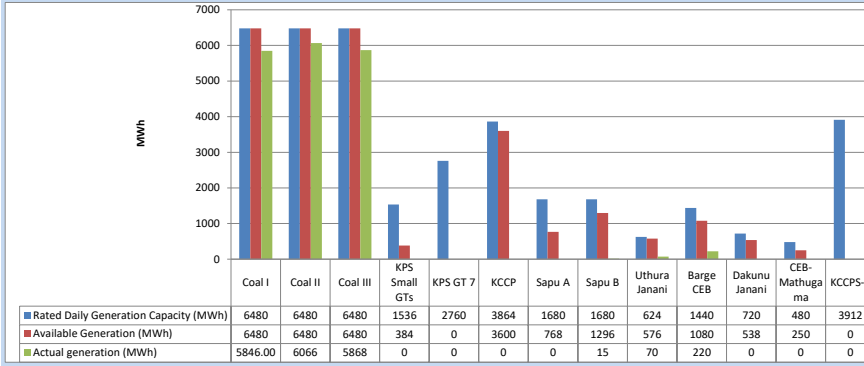
Table 03 - Current Year

Category	Dispatch (GWh)	
CEB Hydro	3,278	31.41%
CEB Coal	3,621	34.69%
CEB Thermal Oil	1,091	10.45%
IPP Thermal	502	4.81%
SPP Wind	235	2.25%
CEB Wind	234	2.24%
Mini Hydro *	743	7.12%
IPP Solar *	638	6.12%
IPP Waste heat	94	0.90%
<b>Total</b>	<b>10,438</b>	

\*Including estimated contribution from non telemetered plants

### 1.2 CEB owned Thermal Plant Dispatch

August 17, 2024

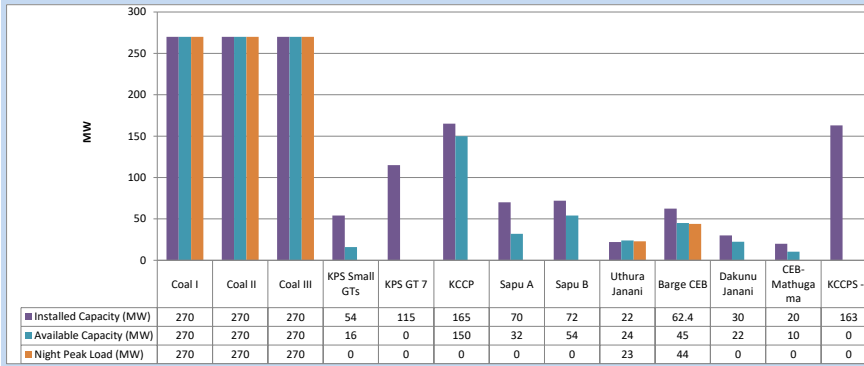


Available Generation is estimated based on plant availability at 6.00am on

August 18, 2024

### 1.3 CEB owned Thermal Plant Loading at the Night Peak

August 17, 2024

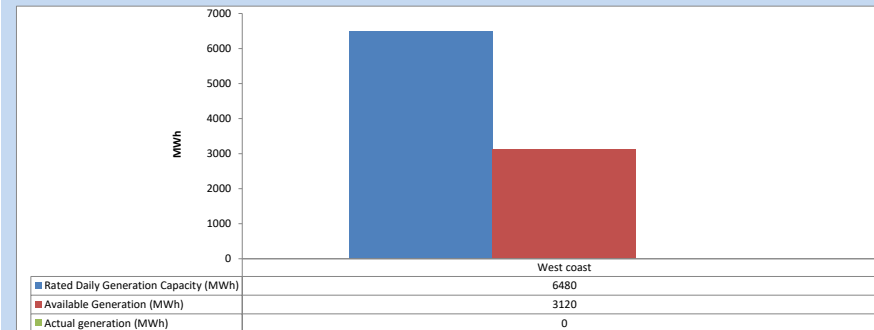


Plant availability is recorded at 6.00 am on

August 18, 2024

### 1.4 IPP owned Thermal Plant Dispatch

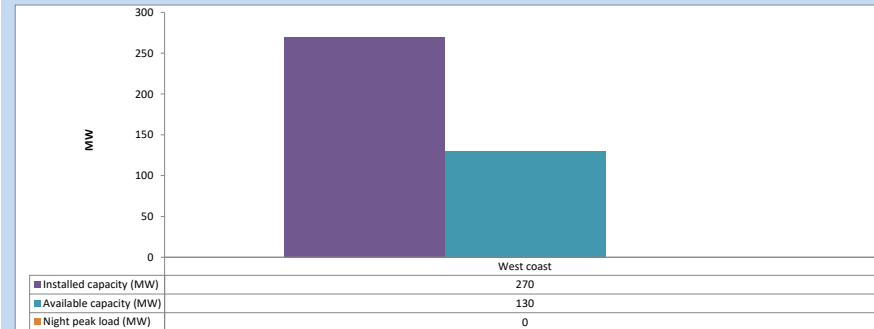
August 17, 2024



Available Generation is estimated based on plant availability at 6.00am on

August 18, 2024

### 1.5 IPP owned Thermal Plant Loading at the Night Peak

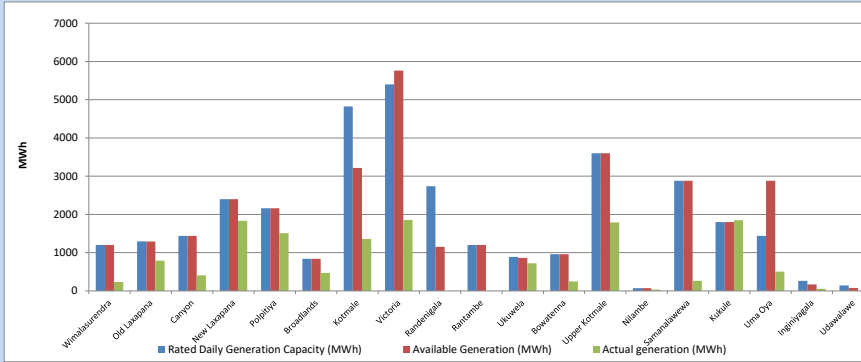


Plant availability is recorded at 6.00 am on

August 18, 2024

1.6 Major Hydro Plant Dispatch

August 17, 2024

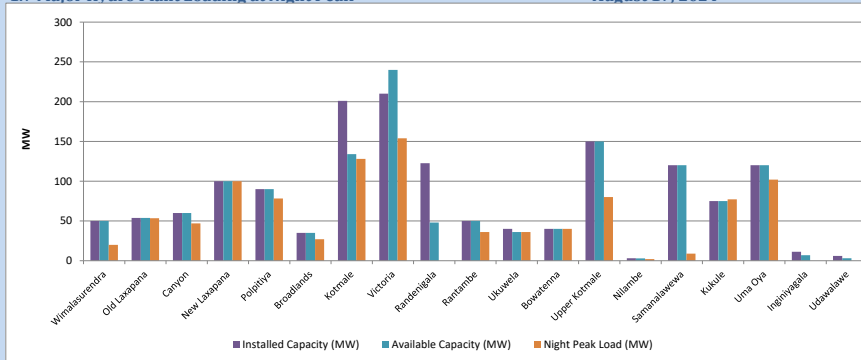


Available Generation is estimated based on plant availability at 6.00am on

August 18, 2024

1.7 Major Hydro Plant Loading at Night Peak

August 17, 2024



Plant availability is recorded at 6.00 am on

August 18, 2024

1.8 Summary of Major Plant performance

August 17, 2024

Table 04

Plant	Maximum Available Total Capacity (MW)	Plant Availability (MW)	Night peak Load (MW)	Plant Dispatch (MWh)
Wimalasurendra	50	50	20	234
Old Laxapana	54	54	54	791
Canyon	60	60	47	406
New Laxapana	100	100	100	1,835
Polpitiya	90	90	78	1,510
Broadlands	35	35	27	469
Kotmale	201	134	128	1,360
Victoria	210	240	154	1,858
Randenigala	123	48	0	0
Rantambe	50	50	36	0
Ukuwela	40	36	36	723
Bowatenna	40	40	40	247
Upper Kotmale	150	150	80	1,791
Nilambe	3	3	2	34
Samanalawewa	120	120	9	262
Kukule	75	75	77	1,848
Uma Oya	120	120	102	504
Inginiyagala	11	7	0	56
Udawalawe	6	3	0	0
Puttalam Coal I	270	270	270	5,846
Puttalam Coal II	270	270	270	6,066
Puttalam Coal III	270	270	270	5,868
KPS Small GTs	54	16	0	0
KPS GT 7	115	0	0	0
KCCP	165	150	0	0
Sapugaskanda A	70	32	0	0
Sapugaskanda B	72	54	0	15
Uthura Janani	22	24	23	70
Barge CEB	62	45	44	220
CEB-Hambantota	30	22	0	0
CEB-Mathugama	20	10	0	0
ACE Matara	24	0	0	0
Asia Power	50	0	0	0
KCCPS -2	163	0	0	0
West Coast	270	130	0	0
Nothern Power	36	0	0	0
ACE Embilipitiya	93	0	0	0
Sobadhanavi (Testing)	220	0	0	0
Total	3,594	2,709	2,249	41,351

Note-

Plant availability is the availability recorded at 6 am on

August 18, 2024

1.9 Contribution to the Night Peak in MW

August 17, 2024

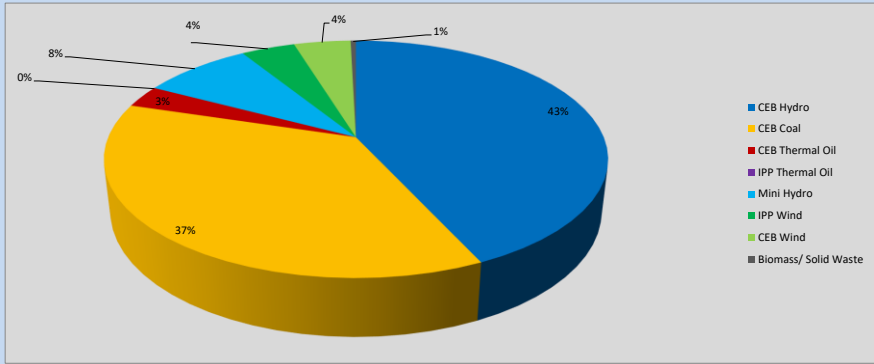


Table 05

CEB Hydro	954	MW
CEB Coal	810	MW
CEB Thermal Oil	67	MW
IPP Thermal Oil	0	MW
Mini Hydro (Telemetered)	186	MW
IPP Wind	91.4	MW
CEB Wind	96.4	MW
Biomass/ Solid Waste	9	MW

Recorded Peak Demand Data

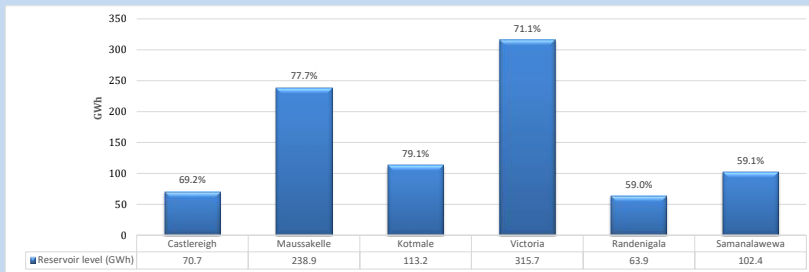
Table 06

Night Peak*	2,213	MW
Day Peak Maximum Demand	1,905	MW
Day Peak Minimum Demand	1,580	MW
Off Peak Minimum Demand	1,361	MW

Above figures are excluding contribution from roof top solar, non telemetered solar and mini hydro plants

1.10 Reservoir Levels -

as at 06.00 Hr on August 18, 2024



Total Reservoir Level  
% of Total capacity

904.8 GWh  
70.8%

1.11 Day Ahead Planned Demand Vs Actual Demand (Excluding non telemetered data)

August 17, 2024

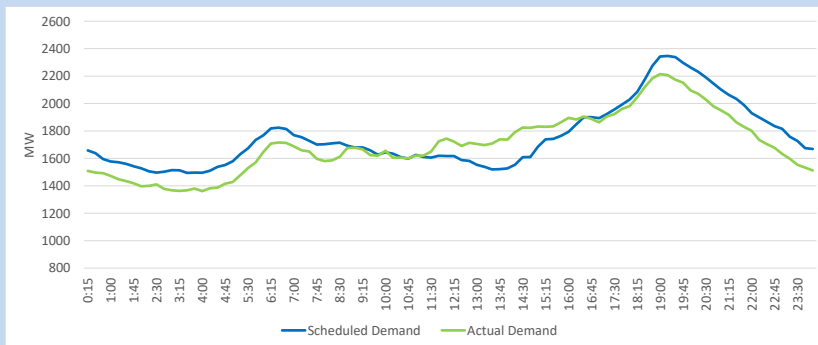
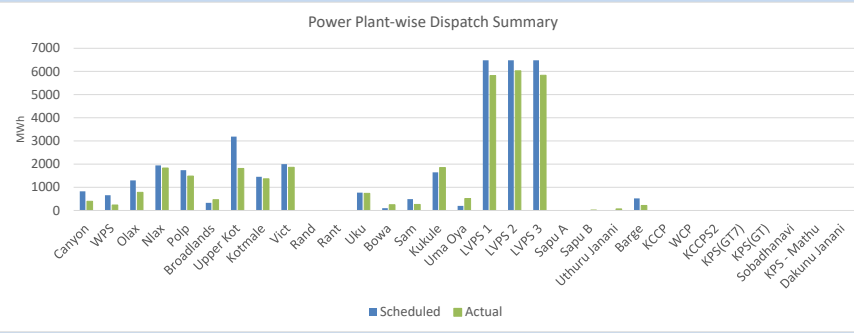


Table 07

Category	Scheduled Dispatch (MWh)	Actual Dispatch (MWh)	Deviation (MWh)
Major Hydro	16,644	13,856	(2,788)
CEB Coal	19,440	17,682	(1,758)
CEB Thermal Oil	521	305	(216)
IPP Thermal Oil	-	-	-
IPP Wind (Telemetered)	5,527	8,998	3,470
<b>Total</b>	<b>42,132</b>	<b>40,840</b>	<b>-1,292</b>

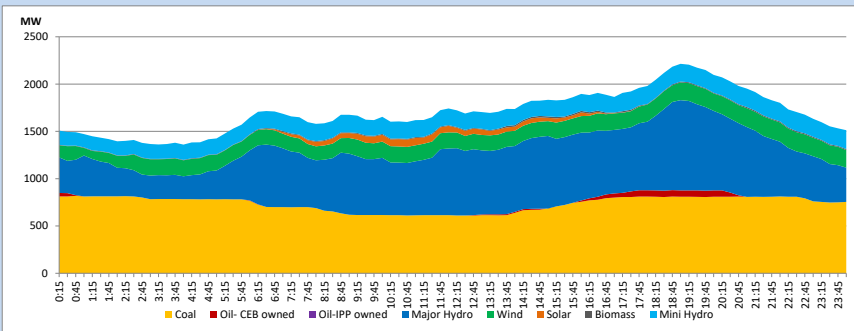
1.12 Power Plant-wise Dispatch Summary

August 17, 2024



1.13 Daily Load Curve

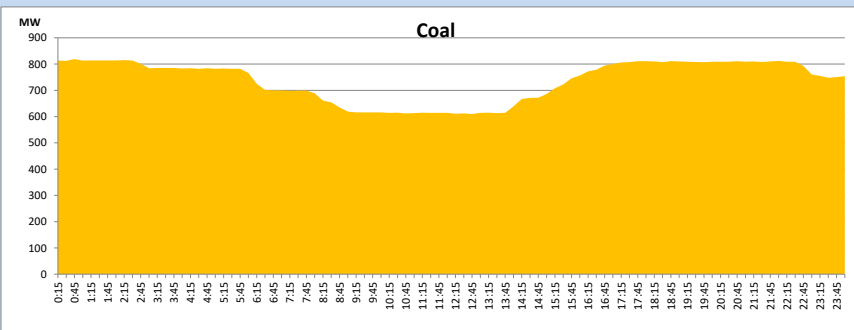
August 17, 2024



Solar and wind data is based on Telemetered Power Stations only

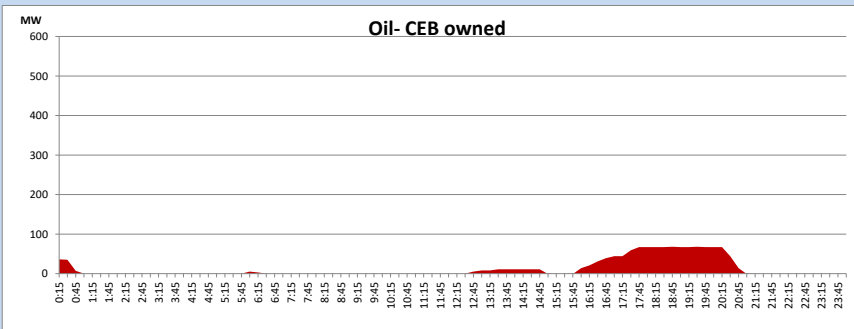
Coal Generation during

August 17, 2024

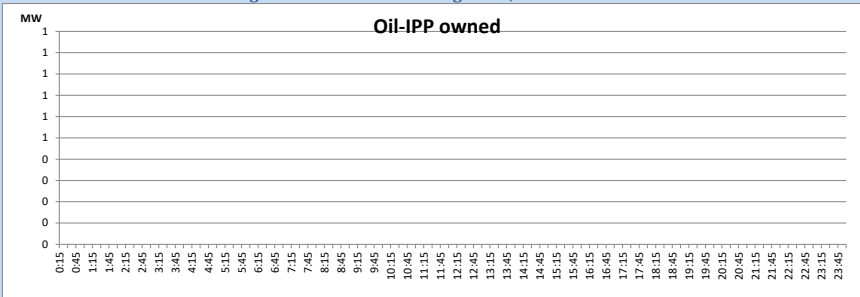


CEB Oil Plant Generation during

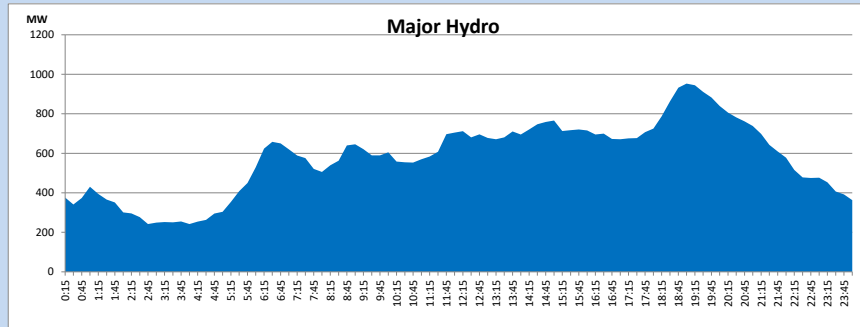
August 17, 2024



**IPP Oil Plant Generation during August 17, 2024**

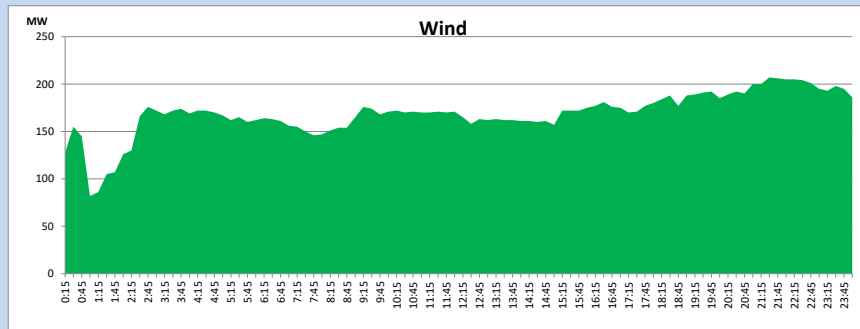


**Major Hydro Generation during August 17, 2024**



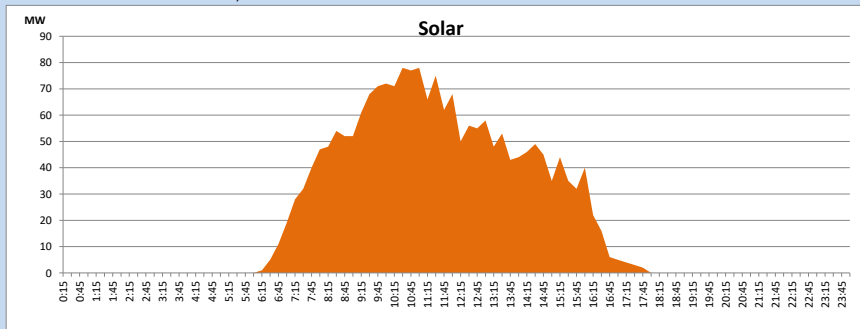
**Wind Generation during August 17, 2024**

Based on Telemetered Power Stations only



**Solar Generation during August 17, 2024**

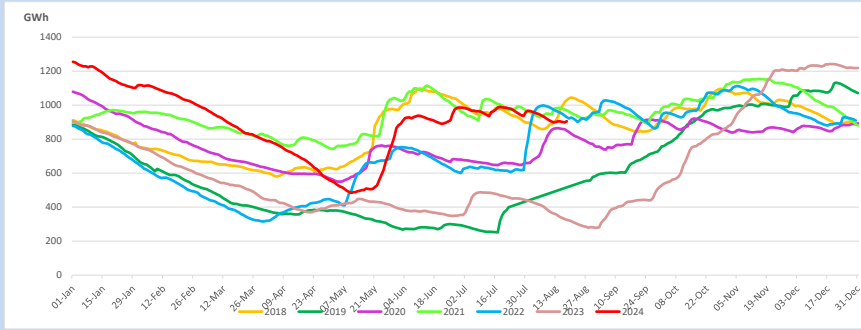
Based on Telemetered Power Stations only



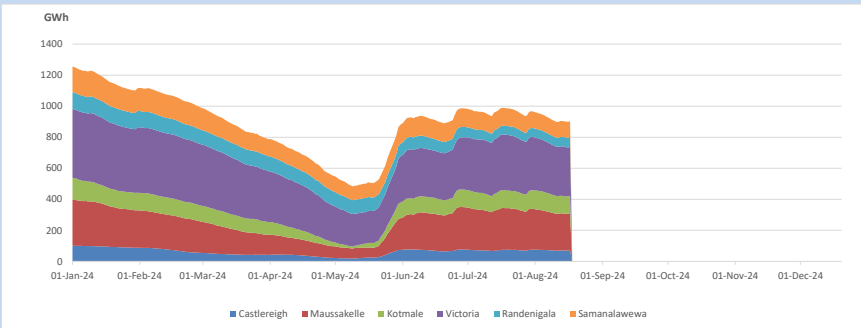
**1.14 Major Incidents reported during the day August 17, 2024**

- 1) Kolonnawa - Seethawaka 132kV cct tripped only from Kolonnawa end at 10:20hrs. The cct is normalized at 10:26hrs.
- 2) New Chilaw 220/132kV T/F tripped from both ends at 13:58hrs. The T/F is normalized at 16:04hrs.
- 3) Kukule pond spilling continues to the present hour.

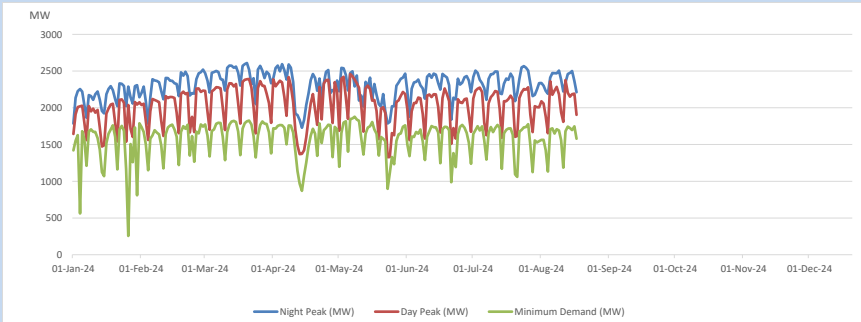
## 2. Comparison of Total Reservoir Storage Levels with Past Years



## 3. Variation of Major Hydro Reservoir Levels in the current year (GWh)



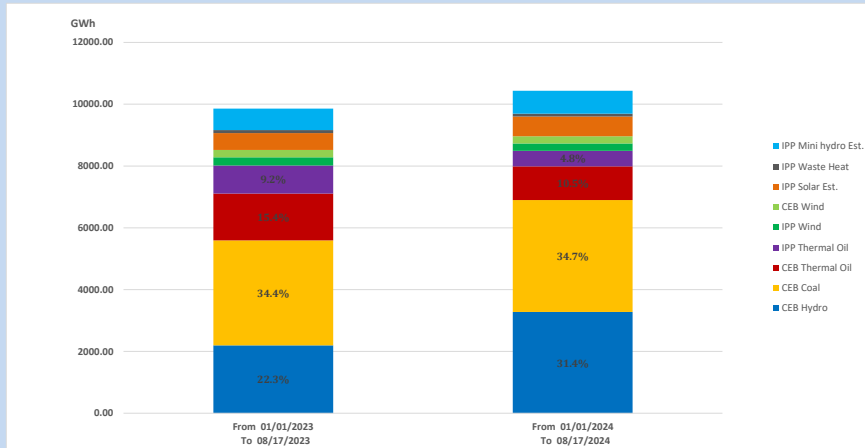
## 4. Variation of Demand during the current year



The above figures are excluding contribution from roof top solar, non telemetered solar and mini hydro plants



## 5. Cumulative Dispatch Comparison with Last Year



Cumulative dispatch  
 From 01/01/2023 To 08/17/2023 **9859 GWh**  
 From 01/01/2024 To 08/16/2024 **10438 GWh**

The above figures are including contribution from roof top solar, non telemetered solar and mini hydro plants)  
 Unserviced energy due to power cuts has been excluded in 2023

### Thermal Power Plant - Fuel types

Table 08

Power Station	Primary Fuel
CEB Thermal	
Sapugaskanda 1	Heavy Fuel
Sapugaskanda 2	Heavy Fuel
Kelanitissa Small Gas Turbines	Auto Diesel
GT 7 - Kelanitissa	Auto Diesel
Kelanitissa CCY	Naphtha or Diesel
Lakvijaya 1	Coal
Lakvijaya 2	Coal
Lakvijaya 3	Coal
Uthuru Janani	Heavy Fuel
Barge CEB	Heavy Fuel
KCCPS -2	Auto Diesel

Power Station	Primary Fuel
Private Thermal	
West Coast	Auto Diesel / Heavy Fuel
Sobadhanavi	Auto Diesel

## 6. Installed System Capacity

Table 09

	Installed Capacity (MW)
CEB Hydro	1530
CEB Coal	810
CEB Thermal Oil	786
IPP Thermal Oil (West Coast)	270
IPP Wind	163
CEB Wind	100
Mini Hydro	422
IPP Waste heat + Biomass	54
IPP Solar	137
Rooftop Solar (Ordinary)	343
Rooftop Solar (LT Bulk)	289
Rooftop Solar (HT Bulk)	84

Data Source - Monthly Review Report [Mar-2024]