

Generation and Reservoirs Statistics

June 29, 2024



PUBLIC UTILITIES COMMISSION OF SRI LANKA

1. Daily Generation Mix in MWh

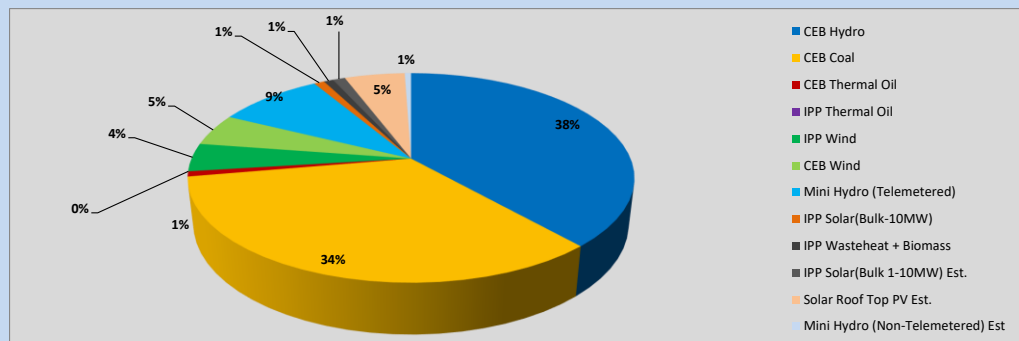


Table 01

	Generation (MWh)
CEB Hydro	17,062
CEB Coal	15,033
CEB Thermal Oil	350
IPP Thermal Oil	-
IPP Wind	1,927
CEB Wind	2,194
Mini Hydro (Telemetered)	4,056
IPP Solar (Bulk)	397
IPP Waste heat + Biomass	363
Total Generation (Excluding estimated figures)	41,382
* Estimated unserved energy	0
* Estimated Mini Hydro (Non telemetered)	244
* Estimated IPP Solar PV (Bulk 1-10MW)	473
* Estimated Solar Roof Top PV	2320
Total Generation (Including estimated figures)	44,419

* Estimated figures of CEB generation report

Table 02

	Installed Capacity (MW)
CEB Hydro	1533
CEB Coal	810
CEB Thermal Oil	773.1
IPP Thermal Oil (West Coast)	490
IPP Wind	163
CEB Wind	100
Mini Hydro	422
IPP Waste heat + Biomass	54
IPP Solar	137
Rooftop Solar (Ordinary)	326
Rooftop Solar (LT Bulk)	285
Rooftop Solar (HT Bulk)	79

Data Source - Monthly Review Report [Jan-2024]

2. Cumulative Dispatch

Following data excludes the contribution from roof top solar, non telemetered solar and mini hydro plants

Table 03 - Current Month

Category	Dispatch (GWh)	
CEB Hydro	455	34.95%
CEB Coal	455	34.92%
CEB Thermal Oil	38	2.93%
IPP Thermal	16	1.20%
SPP Wind	58	4.44%
CEB Wind	60	4.61%
Mini Hydro *	126	9.64%
IPP Solar *	87	6.67%
IPP Waste heat + BMP	8	0.64%
Total	1,303	

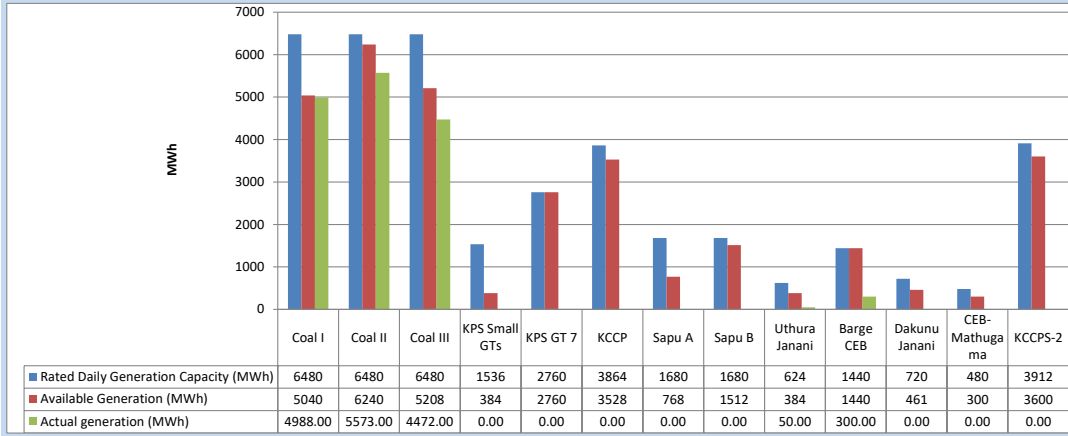
Table 04 - Current Year

Category	Dispatch (GWh)	
CEB Hydro	2,495	30.59%
CEB Coal	2,990	36.67%
CEB Thermal Oil	817	10.01%
IPP Thermal	433	5.31%
SPP Wind	149	1.82%
CEB Wind	154	1.89%
Mini Hydro *	557	6.83%
IPP Solar *	488	5.99%
IPP Waste heat	73	0.89%
Total	8,155	

*Including estimated contribution from non telemetered plants

3. CEB owned Thermal Plant Dispatch

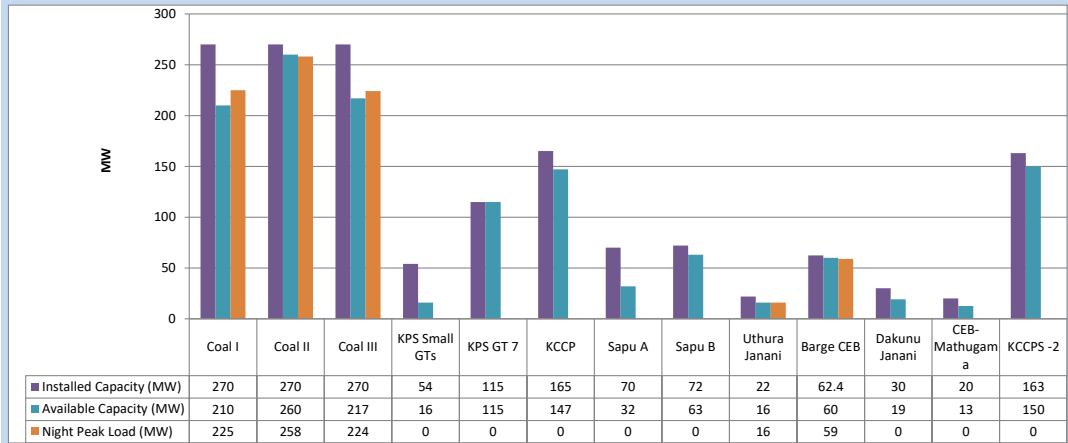
June 29, 2024



Available Generation is estimated based on plant availability at 6.00am on

June 30, 2024

4. CEB owned Thermal Plant Loading at the Night Peak

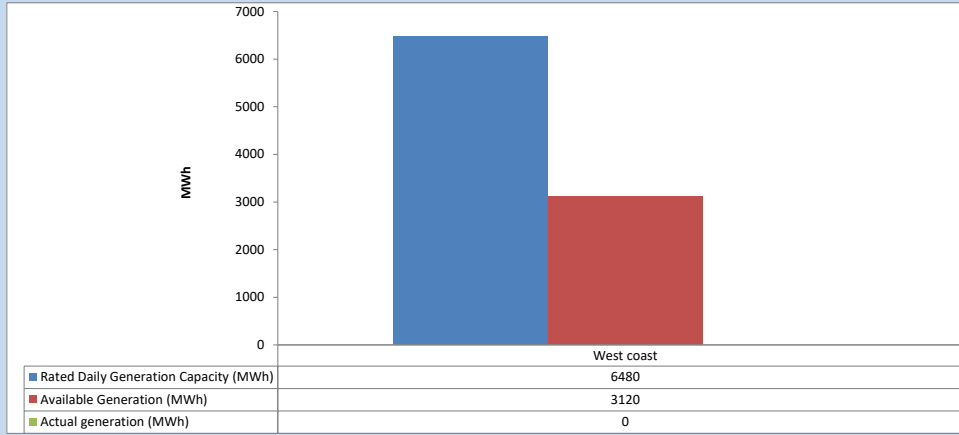


Plant availability is recorded at 6.00 am on

June 30, 2024

5. IPP owned Thermal Plant Dispatch

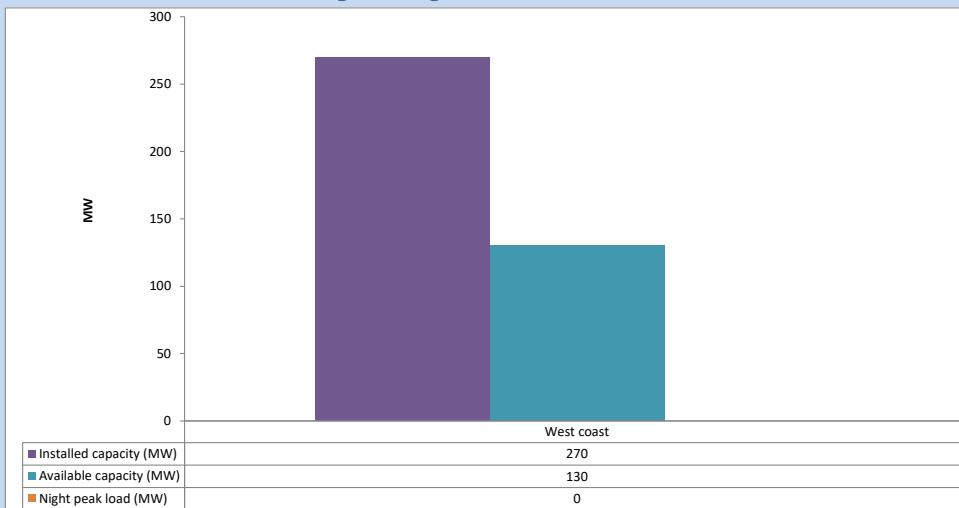
June 29, 2024



Available Generation is estimated based on plant availability at 6.00am on

June 30, 2024

6. IPP owned Thermal Plant Loading at the Night Peak

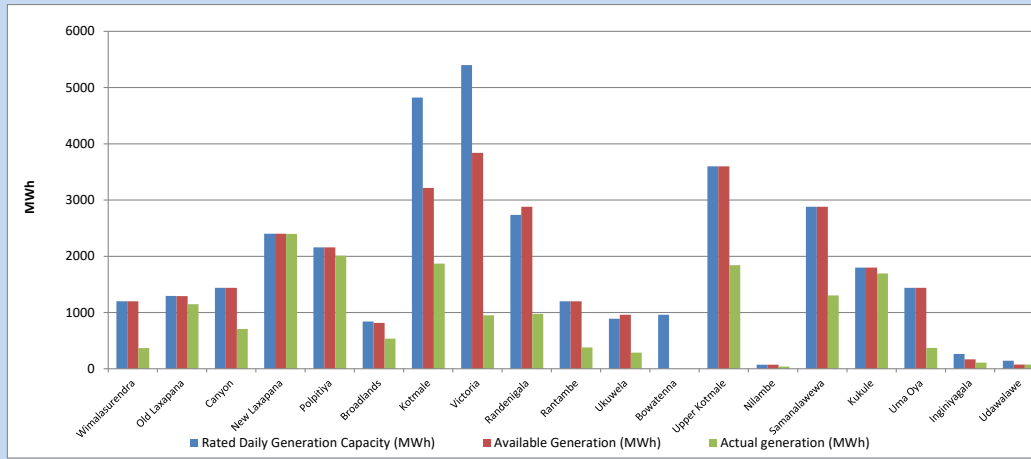


Plant availability is recorded at 6.00 am on

June 30, 2024

7. Major Hydro Plant Dispatch

June 29, 2024

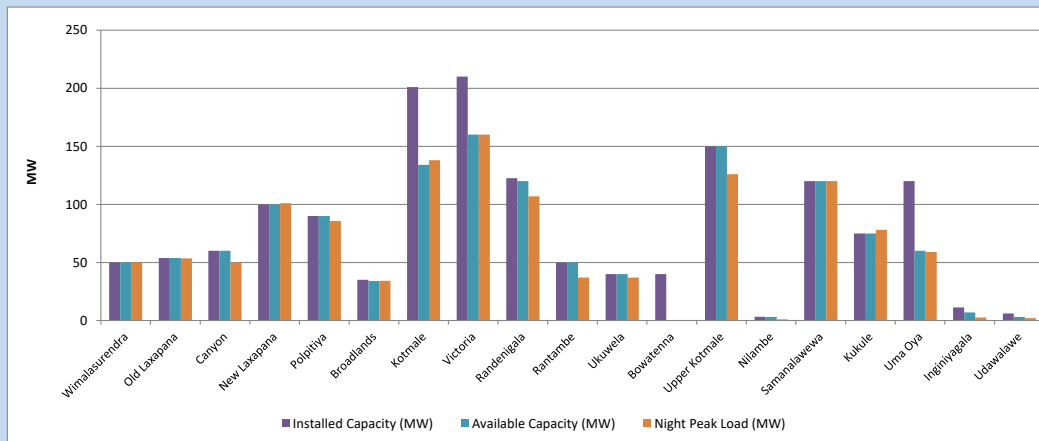


Available Generation is estimated based on plant availability at 6.00am on
Broadlands power plant is operating in the Commissioning Stage

June 30, 2024

8. Major Hydro Plant Loading at Night Peak

June 29, 2024



Plant availability is recorded at 6.00 am on
Broadlands power plant is operating in the Commissioning Stage

June 30, 2024

9. Summary of Major Plant performance

Table 05

Plant	Maximum Available Total Capacity	Plant Availability	Night peak Load	Plant Dispatch
	(MW)	(MW)	(MW)	(MWh)
Wimalasurendra	50	50	50	367
Old Laxapana	54	54	54	1,148
Canyon	60	60	50	708
New Laxapana	100	100	101	2,397
Polpitiya	90	90	86	2,010
Broadlands	35	34	34	537
Kotmale	201	134	138	1,870
Victoria	210	160	160	951
Randenigala	123	120	107	977
Rantambe	50	50	37	379
Ukuwela	40	40	37	287
Bowatenna	40	0	0	0
Upper Kotmale	150	150	126	1,841
Nilambe	3	3	1	38
Samanalawewa	120	120	120	1,303
Kukule	75	75	78	1,694
Uma Oya (Testing)	120	60	59	370
Inginiyagala	11	7	3	110
Udawalawe	6	3	2	75
Puttalam Coal I	270	210	225	4,988
Puttalam Coal II	270	260	258	5,573
Puttalam Coal III	270	217	224	4,472
KPS Small GTs	54	16	0	0
KPS GT 7	115	115	0	0
KCCP	165	147	0	0
Sapugaskanda A	70	32	0	0
Sapugaskanda B	72	63	0	0
Uthura Janani	22	16	16	50
Barge CEB	62	60	59	300
CEB-Hambantota	30	19	0	0
CEB-Mathugama	20	13	0	0
ACE Matara	24	0	0	0
Asia Power	50	0	0	0
KCCPS -2	163	150	0	0
West Coast	270	130	0	0
Nothern Power	36	0	0	0
ACE Embilipitiya	93	0	0	0
Sobadhanavi	220	0	0	0
Total	3,594	2,758	2,370	41,382

Note-

Plant availability is the availability recorded at 6 am on
Installed Capacity is sourced from CEB Annual Report- 2022

June 30, 2024

10. Contribution to the Night Peak in MW

June 29, 2024

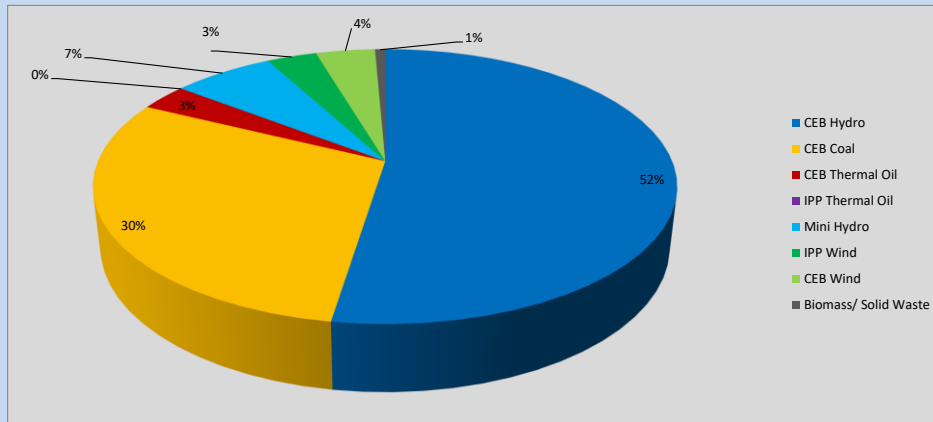


Table 06

CEB Hydro	1245	MW
CEB Coal	707	MW
CEB Thermal Oil	75	MW
IPP Thermal Oil	0	MW
Mini Hydro (Telemetered)	158	MW
IPP Wind	78.3	MW
CEB Wind	93.1	MW
Biomass/ Solid Waste	16	MW

Recorded Peak Demand Data

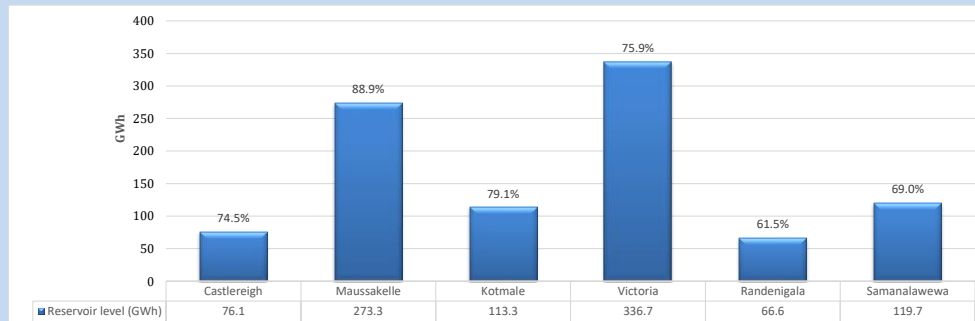
Table 07

Night Peak*	2,372	MW
Day Peak Maximum Demand	1,911	MW
Day Peak Minimum Demand	1,524	MW
Off Peak Minimum Demand	1,437	MW

Above figures are excluding contribution from roof top solar, non telemetered solar and mini hydro plants

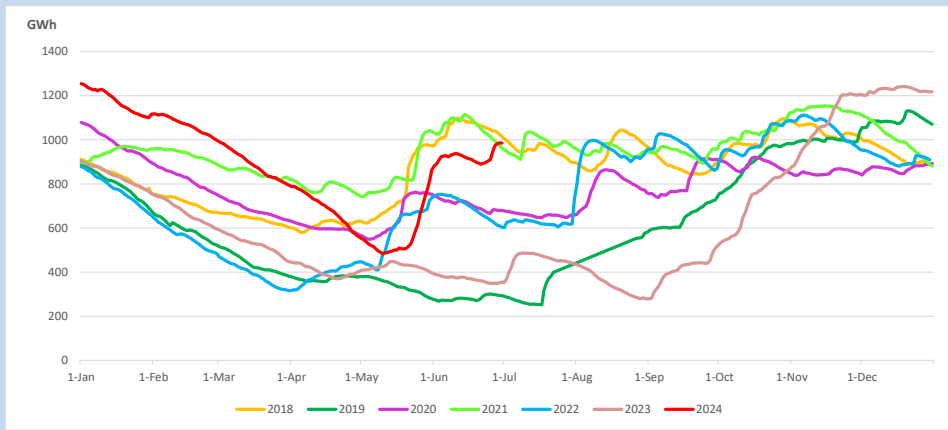
Reservoir Levels -

as at 06.00 Hr on June 30, 2024

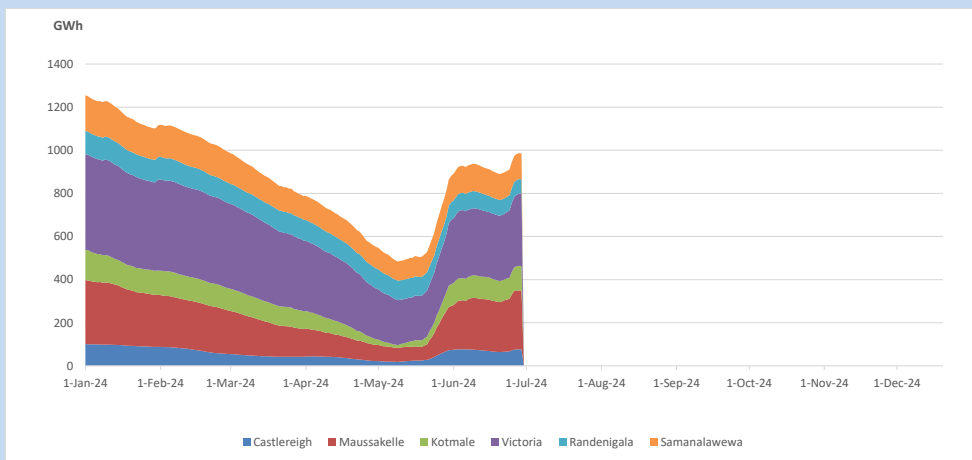


Total Reservoir Level 985.7 GWh
% of Total capacity 77.1%

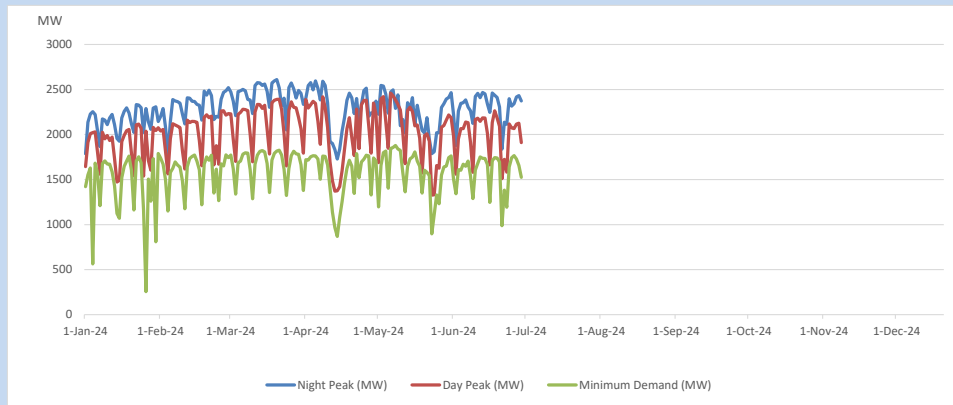
11. Comparison of Total Reservoir Storage Levels with Past Years



12. Variation of Major Hydro Reservoir Levels in the current year (GWh)



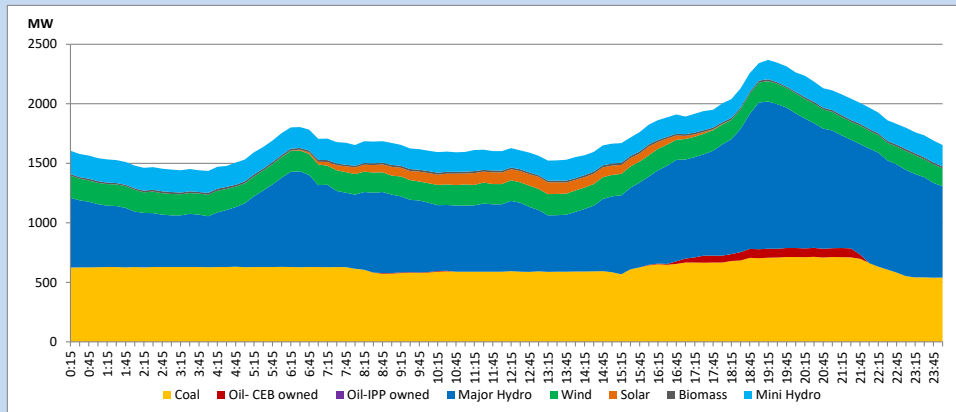
13. Variation of Demand during the current year



The above figures are excluding contribution from roof top solar, non telemetered solar and mini hydro plants

14. Daily Load Curve

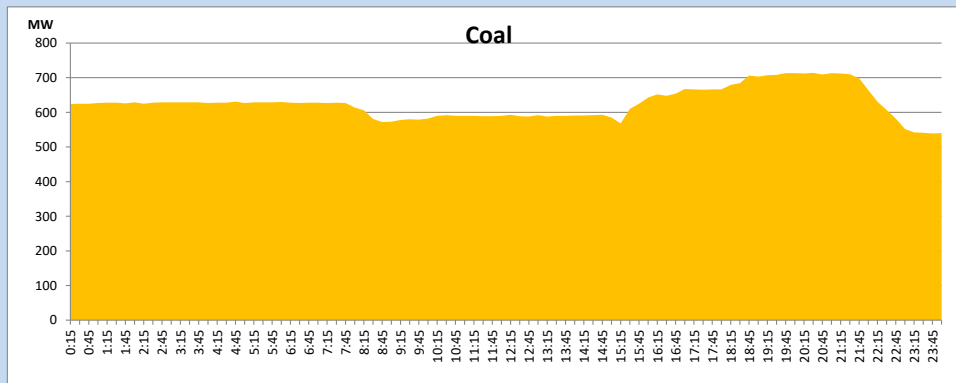
June 29, 2024



Solar and wind data is based on Telemetered Power Stations only

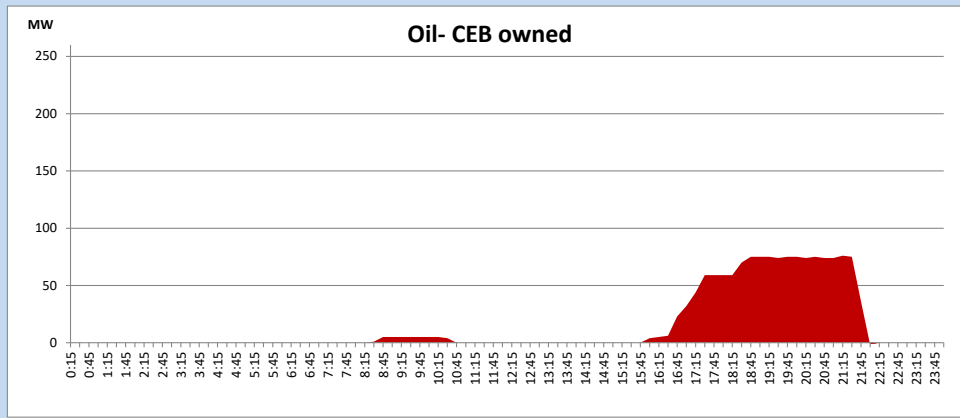
Coal Generation during

June 29, 2024



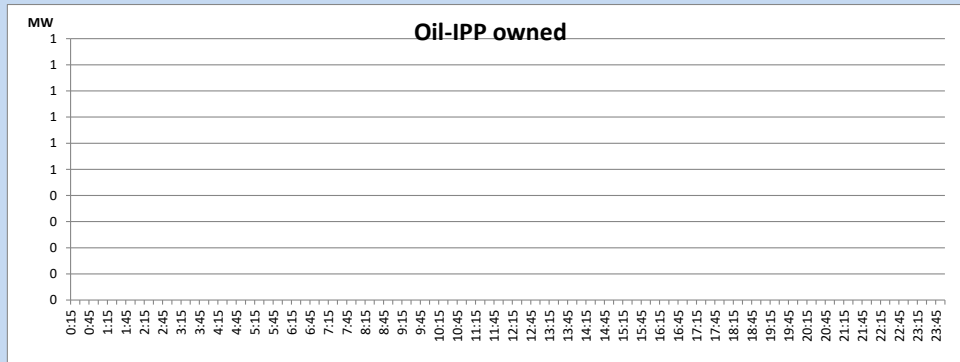
CEB Oil Plant Generation during

June 29, 2024



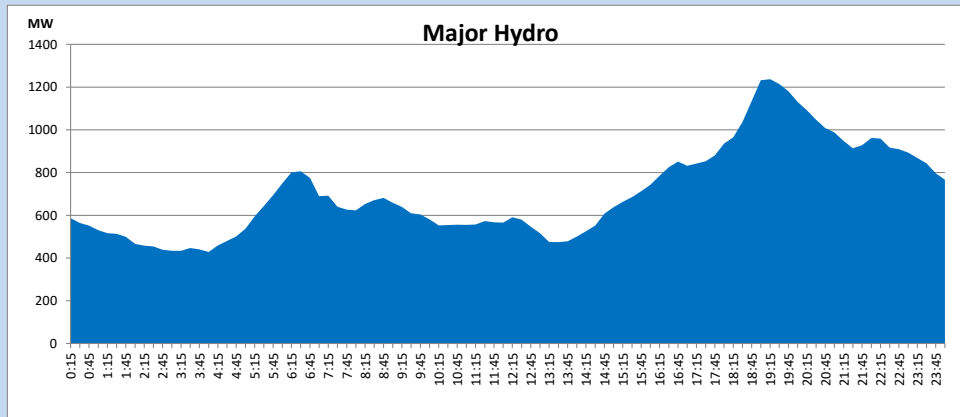
IPP Oil Plant Generation during

June 29, 2024



Major Hydro Generation during

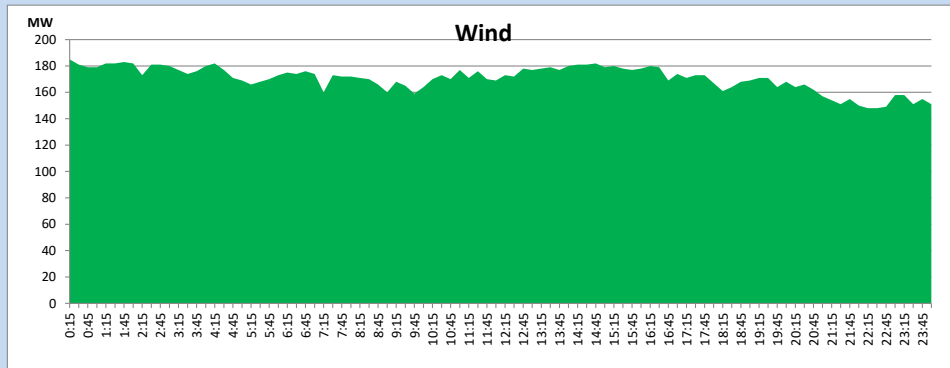
June 29, 2024



Wind Generation during

June 29, 2024

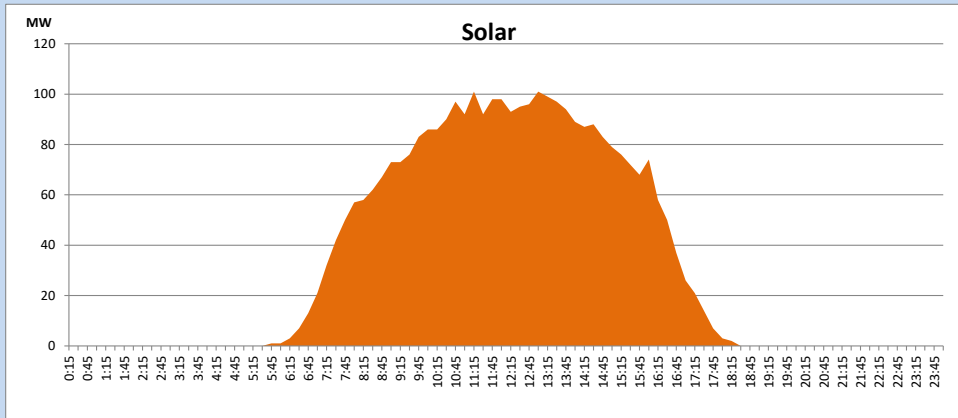
Based on Telemetered Power Stations only



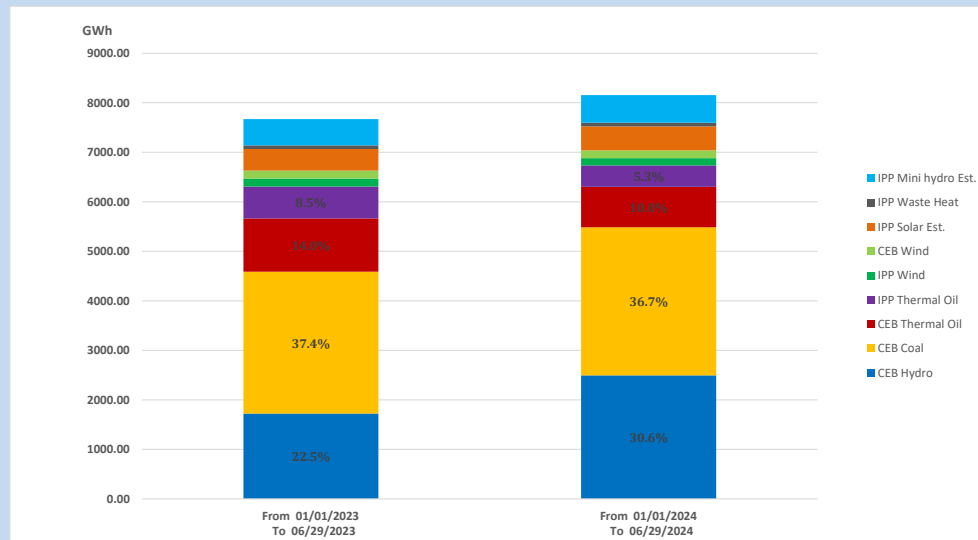
Solar Generation during

June 29, 2024

Based on Telemetered Power Stations only



15. Cumulative Dispatch Comparison with Last Year



Cumulative dispatch
 From 01/01/2023 To 06/29/2023
 From 01/01/2024 To 06/29/2024

7670 GWh
 8155 GWh

The above figures are including contribution from roof top solar, non telemetered solar and mini hydro plants)
 Unused energy due to power cuts has been excluded in 2023

Thermal Plant Fuel types

Table 08

Power Station	Primary Fuel
CEB Thermal	
Sapugaskanda 1	Heavy Fuel
Sapugaskanda 2	Heavy Fuel
Kelanitissa Small Gas Turbines	Auto Diesel
GT 7 - Kelanitissa	Auto Diesel
Kelanitissa CCY	Naphtha or Diesel
Lakvijaya 1	Coal
Lakvijaya 2	Coal
Lakvijaya 3	Coal
Uthuru Janani	Heavy Fuel
Barge CEB	Heavy Fuel
KCCPS -2	Auto Diesel

Power Station	Primary Fuel
Private Thermal	
West Coast	Auto Diesel / Heavy Fuel
Sobadhanavi	Auto Diesel

Major Incidents reported during the day

June 29, 2024

01) Biyagama 220/132/33kV T/F 01 tripped from all ends at 6:51hrs due to operation of LVREF protection, causing 33kV BB 02 and 33kV feeder 04 and 08 to be dead. 33kV feeders 04 & 08 restored via 33kV BB 01 at 07:18hrs and Biyagama T/F 01 was normalized at 10:02hrs.