

# Generation and Reservoirs Statistics

June 26, 2024



PUBLIC UTILITIES COMMISSION OF SRI LANKA

## 1. Daily Generation Mix in MWh

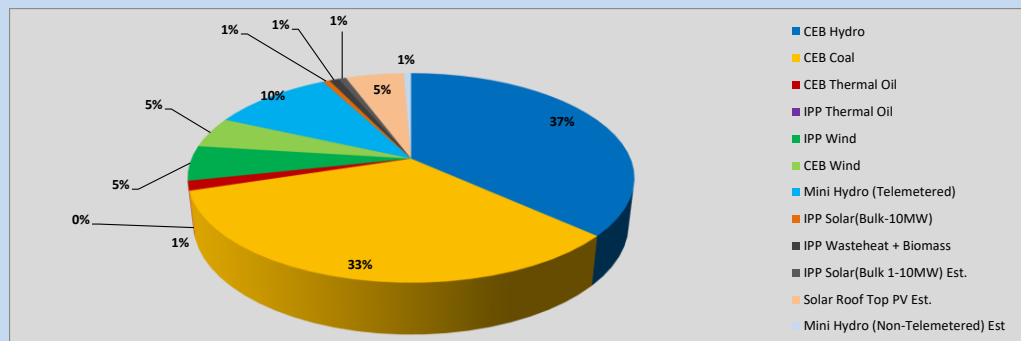


Table 01

	Generation (MWh)
CEB Hydro	16,864
CEB Coal	15,384
CEB Thermal Oil	676
IPP Thermal Oil	-
IPP Wind	2,470
CEB Wind	2,189
Mini Hydro (Telemetered)	4,829
IPP Solar (Bulk)	262
IPP Waste heat + Biomass	381
<b>Total Generation (Excluding estimated figures)</b>	<b>43,055</b>
* Estimated unserved energy	0
* Estimated Mini Hydro (Non telemetered)	291
* Estimated IPP Solar PV (Bulk 1-10MW)	304
* Estimated Solar Roof Top PV	2320
<b>Total Generation (Including estimated figures)</b>	<b>45,970</b>

\* Estimated figures of CEB generation report

Table 02

	Installed Capacity (MW)
CEB Hydro	1533
CEB Coal	810
CEB Thermal Oil	773.1
IPP Thermal Oil (West Coast)	490
IPP Wind	163
CEB Wind	100
Mini Hydro	422
IPP Waste heat + Biomass	54
IPP Solar	137
Rooftop Solar (Ordinary)	326
Rooftop Solar (LT Bulk)	285
Rooftop Solar (HT Bulk)	79

Data Source - Monthly Review Report [Jan-2024]

## 2. Cumulative Dispatch

Following data excludes the contribution from roof top solar, non telemetered solar and mini hydro plants

Table 03 - Current Month

Category	Dispatch (GWh)	
CEB Hydro	402	34.51%
CEB Coal	409	35.12%
CEB Thermal Oil	37	3.19%
IPP Thermal	16	1.34%
SPP Wind	51	4.41%
CEB Wind	54	4.59%
Mini Hydro *	111	9.55%
IPP Solar *	78	6.66%
IPP Waste heat + BMP	7	0.63%
<b>Total</b>	<b>1,165</b>	

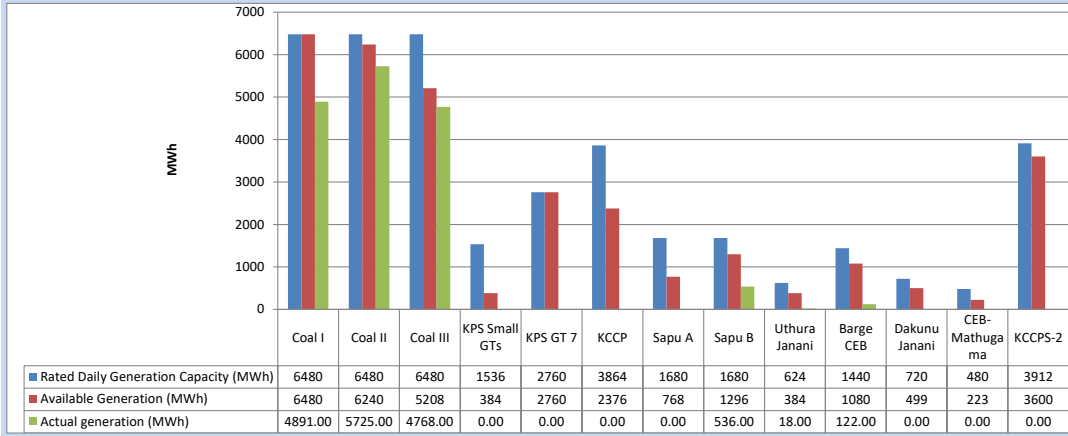
Table 04 - Current Year

Category	Dispatch (GWh)	
CEB Hydro	2,441	30.45%
CEB Coal	2,945	36.73%
CEB Thermal Oil	816	10.17%
IPP Thermal	433	5.40%
SPP Wind	142	1.77%
CEB Wind	148	1.84%
Mini Hydro *	543	6.77%
IPP Solar *	479	5.97%
IPP Waste heat	72	0.89%
<b>Total</b>	<b>8,018</b>	

\*Including estimated contribution from non telemetered plants

### 3. CEB owned Thermal Plant Dispatch

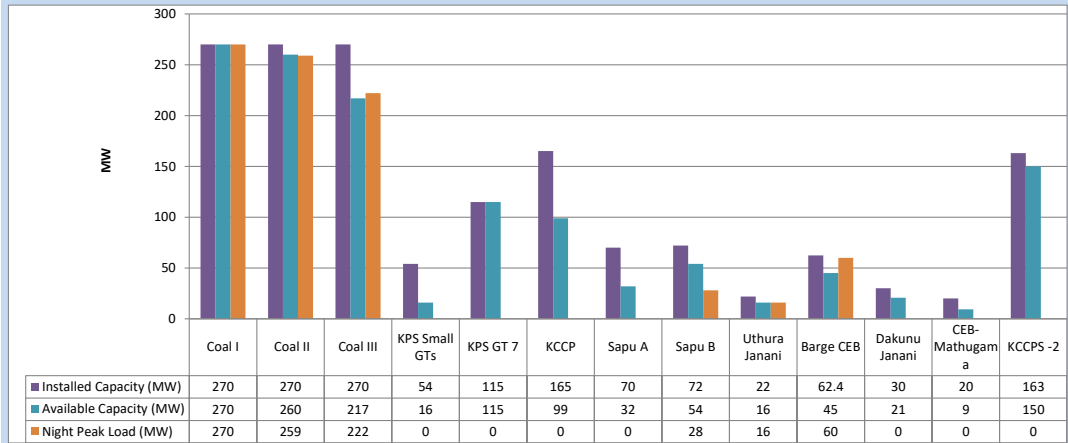
June 26, 2024



Available Generation is estimated based on plant availability at 6.00am on

June 27, 2024

### 4. CEB owned Thermal Plant Loading at the Night Peak

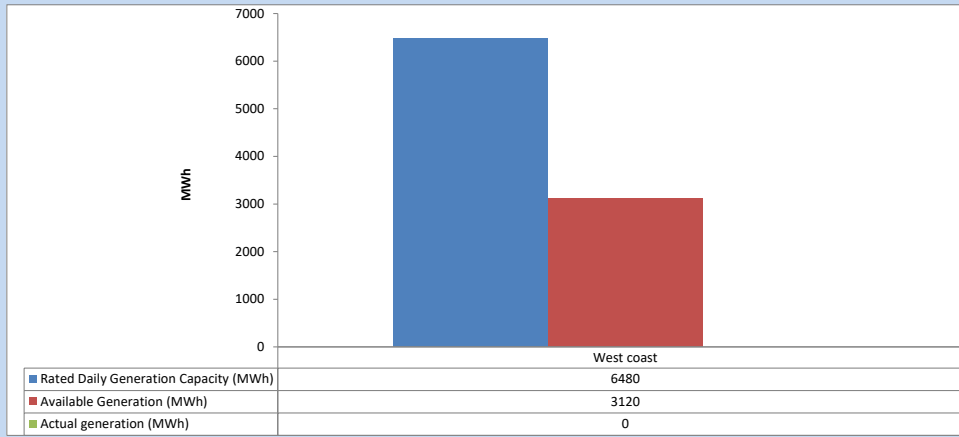


Plant availability is recorded at 6.00 am on

June 27, 2024

### 5. IPP owned Thermal Plant Dispatch

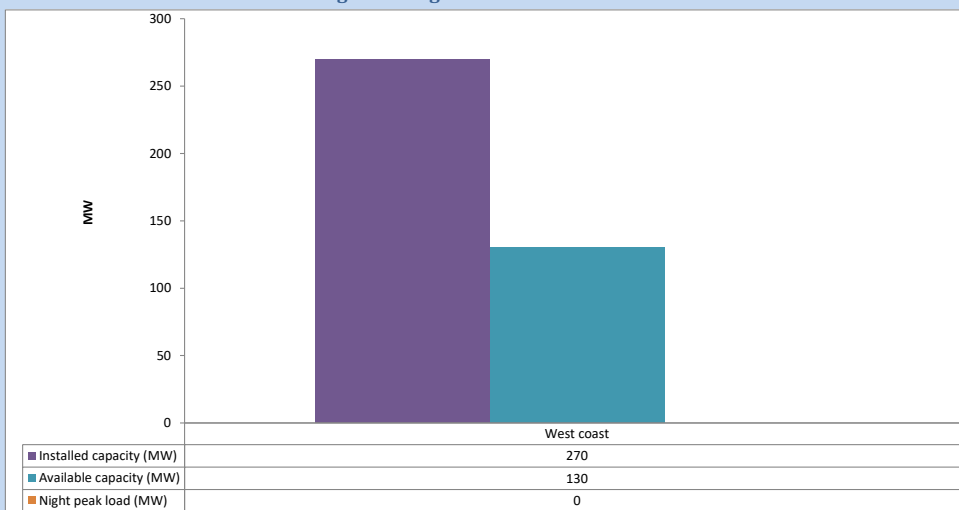
June 26, 2024



Available Generation is estimated based on plant availability at 6.00am on

June 27, 2024

### 6. IPP owned Thermal Plant Loading at the Night Peak

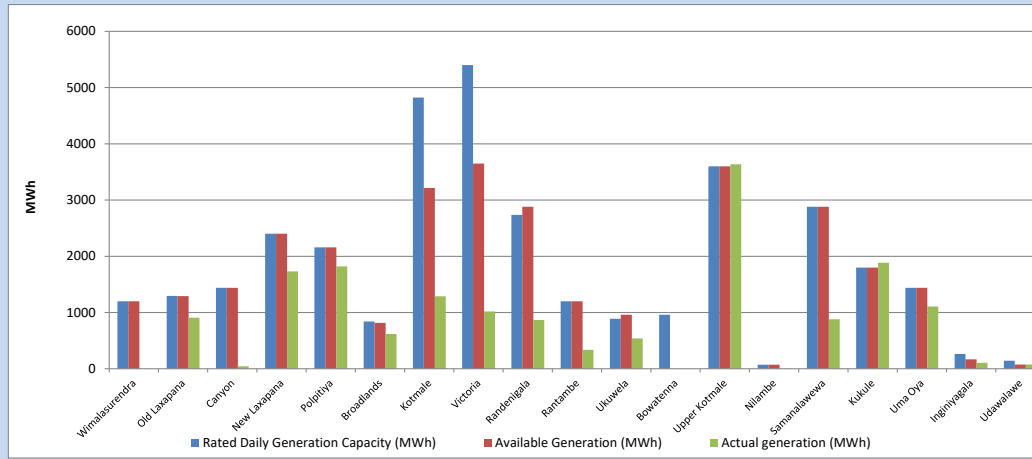


Plant availability is recorded at 6.00 am on

June 27, 2024

## 7. Major Hydro Plant Dispatch

June 26, 2024

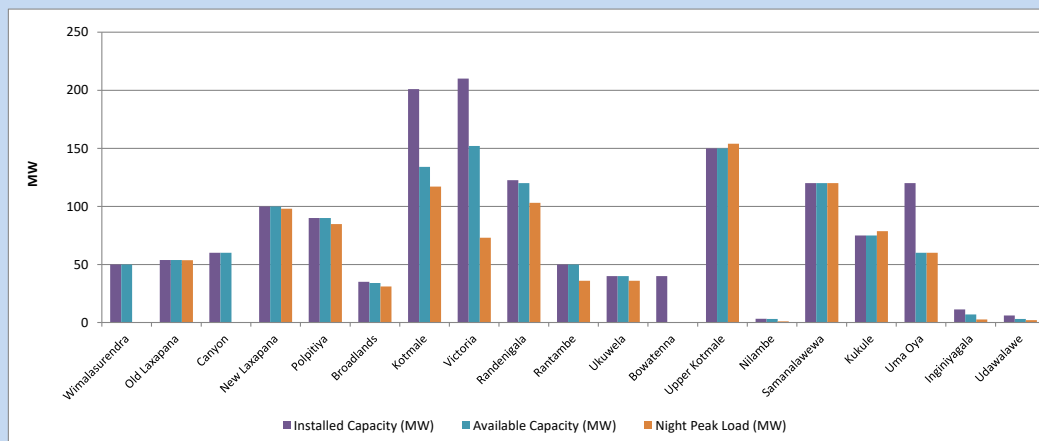


Available Generation is estimated based on plant availability at 6.00am on  
Broadlands power plant is operating in the Commissioning Stage

June 27, 2024

## 8. Major Hydro Plant Loading at Night Peak

June 26, 2024



Plant availability is recorded at 6.00 am on  
Broadlands power plant is operating in the Commissioning Stage

June 27, 2024

## 9. Summary of Major Plant performance

Table 05

Plant	Maximum Available Total Capacity	Plant Availability	Night peak Load	Plant Dispatch
	(MW)	(MW)	(MW)	(MWh)
Wimalasurendra	50	50	0	0
Old Laxapana	54	54	54	909
Canyon	60	60	0	45
New Laxapana	100	100	98	1,731
Polpitiya	90	90	85	1,820
Broadlands	35	34	31	620
Kotmale	201	134	117	1,290
Victoria	210	152	73	1,017
Randenigala	123	120	103	868
Rantambe	50	50	36	336
Ukuwela	40	40	36	538
Bowatenna	40	0	0	0
Upper Kotmale	150	150	154	3,636
Nilambe	3	3	1	2
Samanalawewa	120	120	120	879
Kukule	75	75	79	1,884
Uma Oya (Testing )	120	60	60	1,107
Inginiyagala	11	7	3	107
Udawalawe	6	3	2	76
Puttalam Coal I	270	270	270	4,891
Puttalam Coal II	270	260	259	5,725
Puttalam Coal III	270	217	222	4,768
KPS Small GTs	54	16	0	0
KPS GT 7	115	115	0	0
KCCP	165	99	0	0
Sapugaskanda A	70	32	0	0
Sapugaskanda B	72	54	28	536
Uthura Janani	22	16	16	18
Barge CEB	62	45	60	122
CEB-Hambantota	30	21	0	0
CEB-Mathugama	20	9	0	0
ACE Matara	24	0	0	0
Asia Power	50	0	0	0
KCCPS -2	163	150	0	0
West Coast	270	130	0	0
Nothern Power	36	0	0	0
ACE Embilipitiya	93	0	0	0
Sobadhanavi	220	0	0	0
<b>Total</b>	<b>3,594</b>	<b>2,736</b>	<b>2,347</b>	<b>43,056</b>

Note-

Plant availability is the availability recorded at 6 am on  
Installed Capacity is sourced from CEB Annual Report- 2022

June 27, 2024

### 10. Contribution to the Night Peak in MW

June 26, 2024

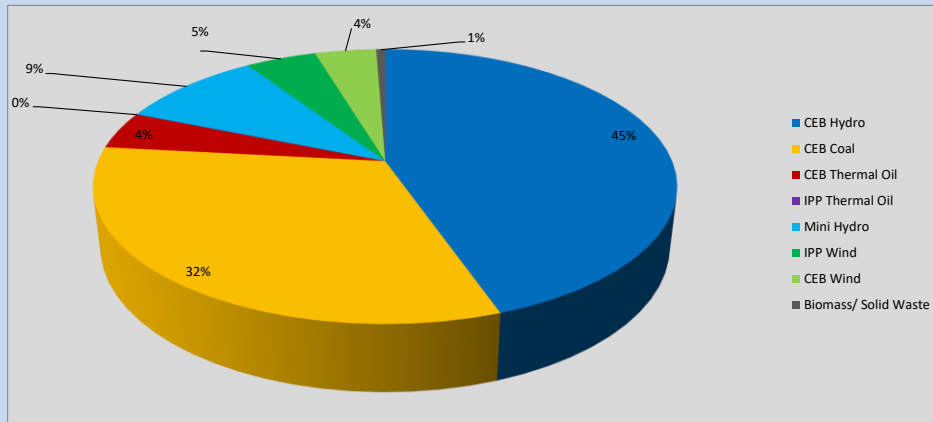


Table 06

CEB Hydro	1045	MW
CEB Coal	751	MW
CEB Thermal Oil	104	MW
IPP Thermal Oil	0	MW
Mini Hydro (Telemetered)	223	MW
IPP Wind	109.5	MW
CEB Wind	95.1	MW
Biomass/ Solid Waste	14	MW

### Recorded Peak Demand Data

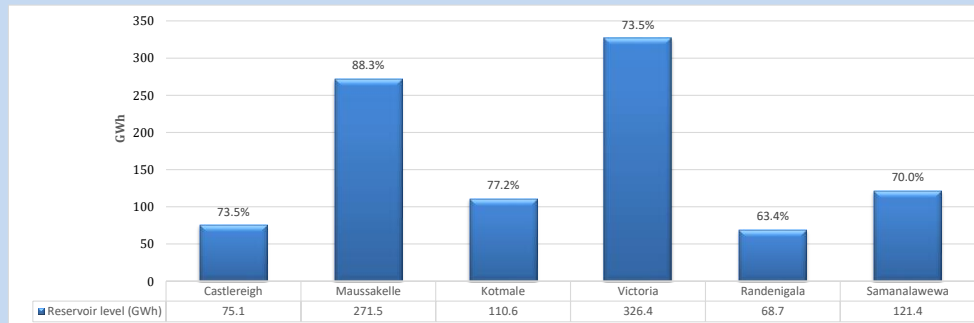
Table 07

Night Peak*	2,342	MW
Day Peak Maximum Demand	2,065	MW
Day Peak Minimum Demand	1,767	MW
Off Peak Minimum Demand	1,352	MW

Above figures are excluding contribution from roof top solar, non telemetered solar and mini hydro plants

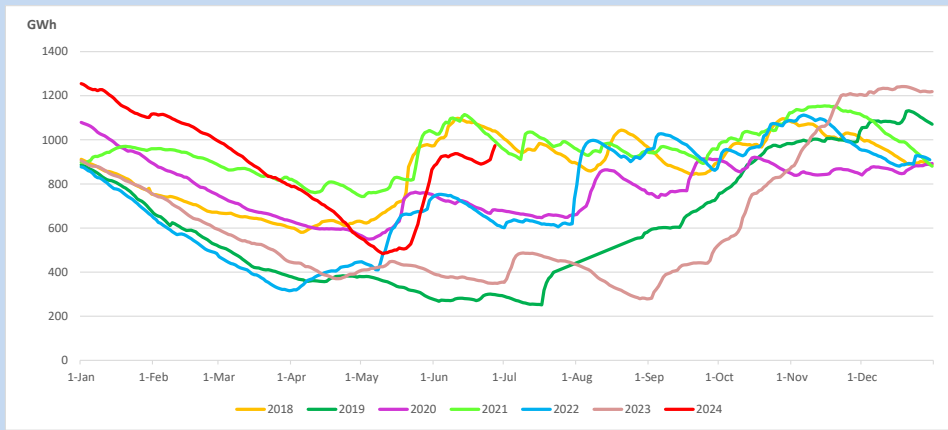
### Reservoir Levels -

as at 06.00 Hr on June 27, 2024

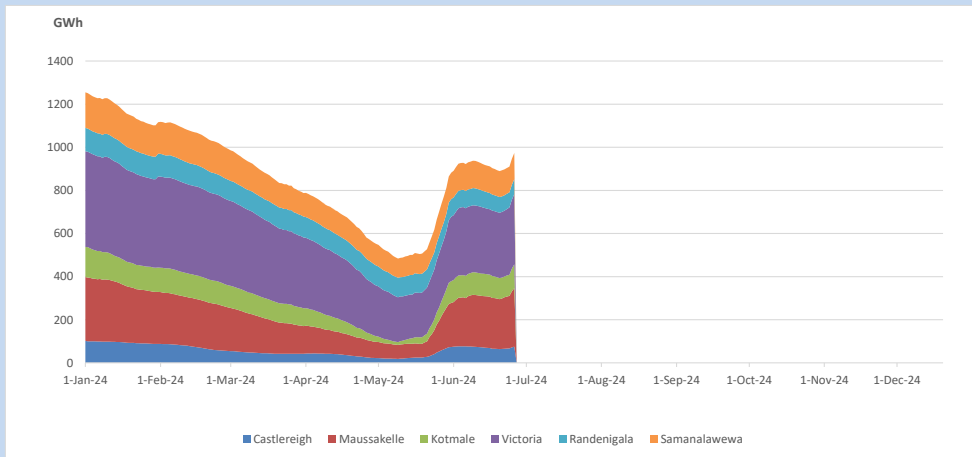


Total Reservoir Level 973.7 GWh  
% of Total capacity 76.1%

### 11. Comparison of Total Reservoir Storage Levels with Past Years

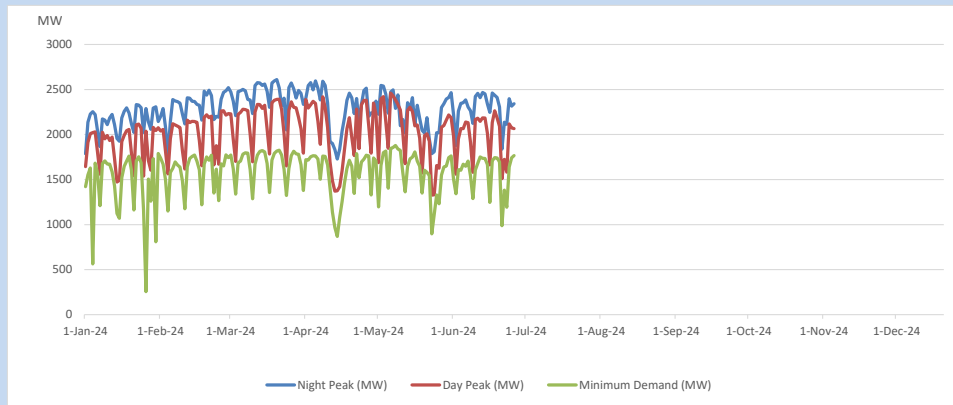


### 12. Variation of Major Hydro Reservoir Levels in the current year (GWh)





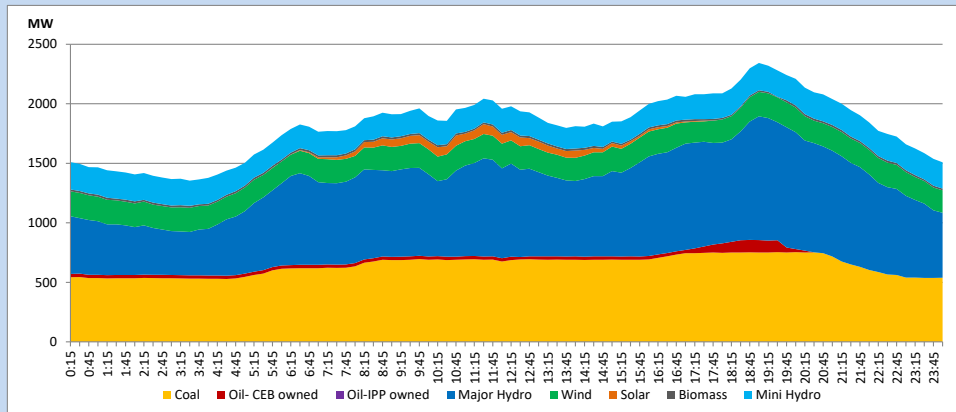
### 13. Variation of Demand during the current year



The above figures are excluding contribution from roof top solar, non telemetered solar and mini hydro plants

### 14. Daily Load Curve

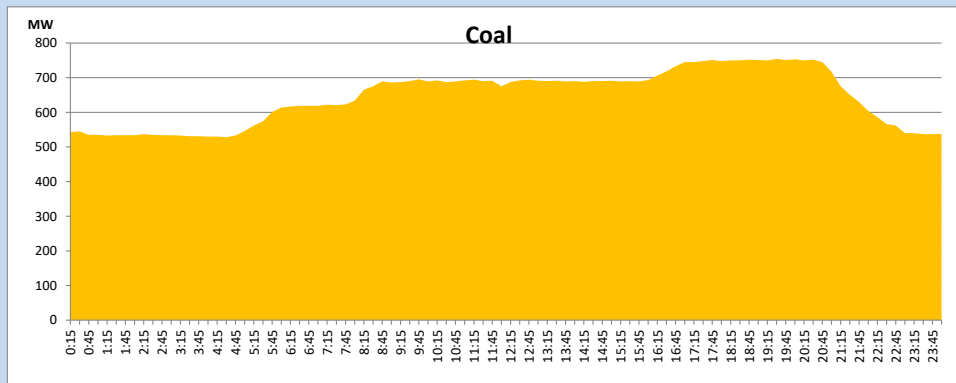
June 26, 2024



Solar and wind data is based on Telemetered Power Stations only

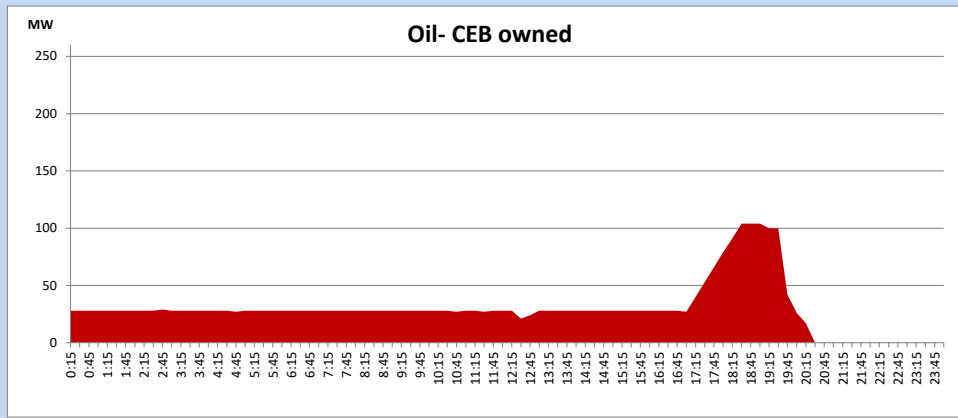
### Coal Generation during

June 26, 2024



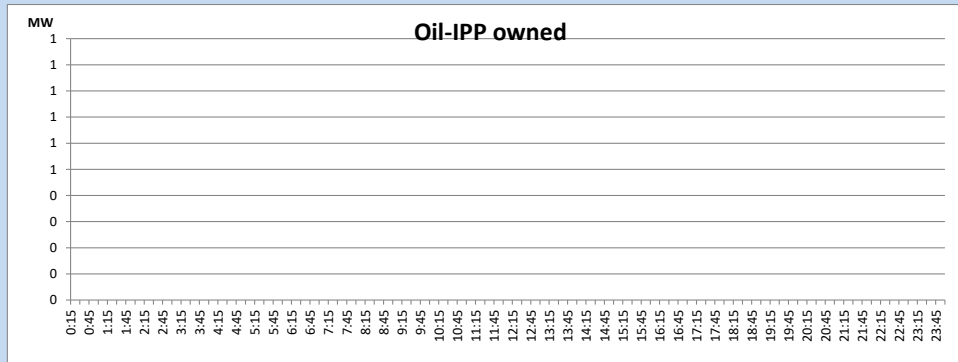
CEB Oil Plant Generation during

June 26, 2024



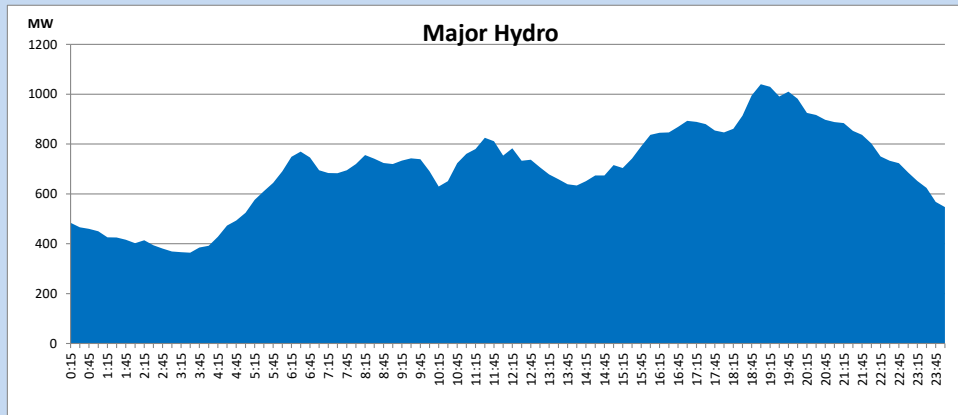
IPP Oil Plant Generation during

June 26, 2024



Major Hydro Generation during

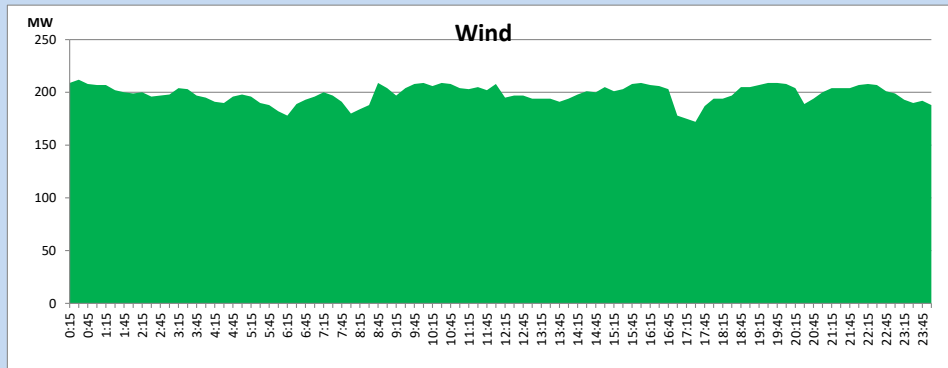
June 26, 2024



## Wind Generation during

June 26, 2024

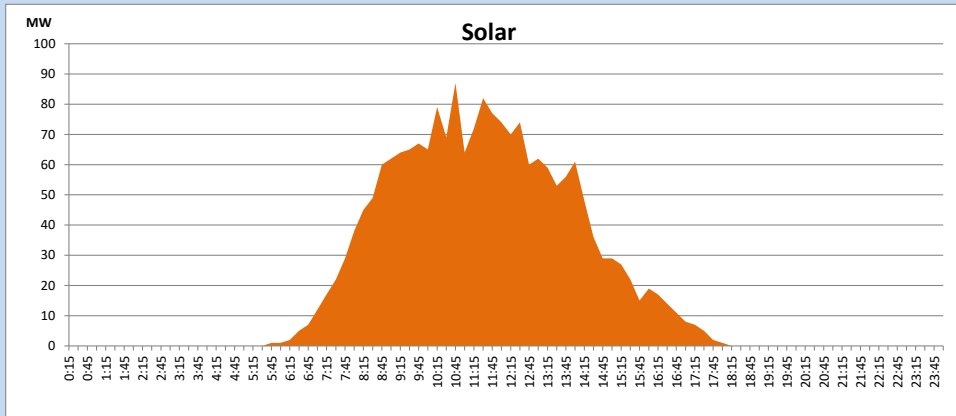
Based on Telemetered Power Stations only



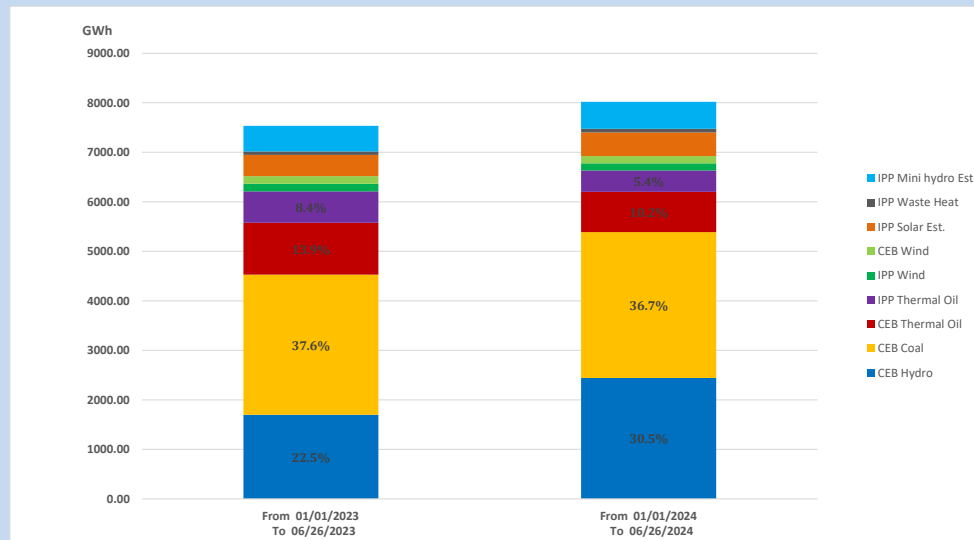
## Solar Generation during

June 26, 2024

Based on Telemetered Power Stations only



## 15. Cumulative Dispatch Comparison with Last Year



### Cumulative dispatch

From 01/01/2023 To 06/26/2023

7535 GWh

From 01/01/2024 To 06/26/2024

8018 GWh

The above figures are including contribution from roof top solar, non telemetered solar and mini hydro plants)

Unserviced energy due to power cuts has been excluded in 2023

Thermal Plant Fuel types

Table 08

Power Station	Primary Fuel
CEB Thermal	
Sapugaskanda 1	Heavy Fuel
Sapugaskanda 2	Heavy Fuel
Kelanitissa Small Gas Turbines	Auto Diesel
GT 7 - Kelanitissa	Auto Diesel
Kelanitissa CCY	Naphtha or Diesel
Lakvijaya 1	Coal
Lakvijaya 2	Coal
Lakvijaya 3	Coal
Uthuru Janani	Heavy Fuel
Barge CEB	Heavy Fuel
KCCPS -2	Auto Diesel

Power Station	Primary Fuel
Private Thermal	
West Coast	Auto Diesel / Heavy Fuel
Sobadhanavi	Auto Diesel

Major Incidents reported during the day

June 26, 2024

- 1) Embilipitiya - Samanalawewa 132kV both circuits were manually switched off at 12:13hrs as a safety measure to rescue a civilian who had climbed onto the tower line. Embilipitiya - Samanalawewa both circuits were normalized at 16:12hrs.
- 2) Embilipitiya - Hambanthota 132kV cct 01 tripped and A/R from both ends at 14:44hrs due to the operation of differential protection.
- 3) Kukule Ganga pond spilling continues to the present hour.