

Generation and Reservoirs Statistics

June 25, 2024



PUBLIC UTILITIES COMMISSION OF SRI LANKA

1. Daily Generation Mix in MWh

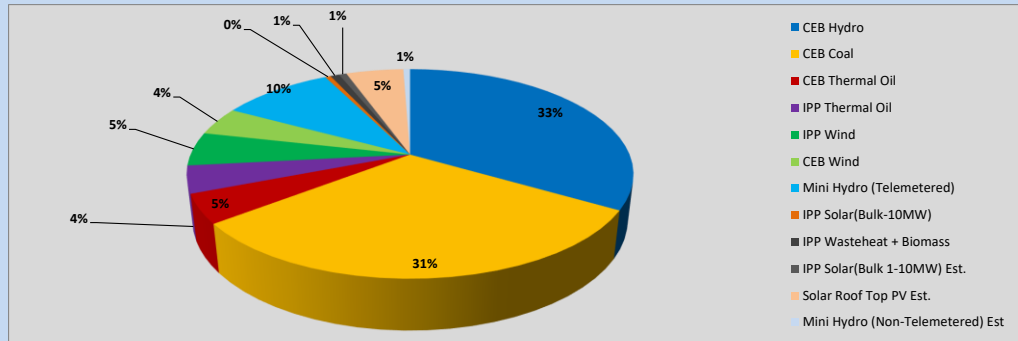


Table 01

	Generation (MWh)
CEB Hydro	15,590
CEB Coal	14,615
CEB Thermal Oil	2,110
IPP Thermal Oil	1,964
IPP Wind	2,430
CEB Wind	2,042
Mini Hydro (Telemetered)	4,523
IPP Solar (Bulk)	223
IPP Waste heat + Biomass	357
Total Generation (Excluding estimated figures)	43,854
* Estimated unserved energy	0
* Estimated Mini Hydro (Non telemetered)	273
* Estimated IPP Solar PV (Bulk 1-10MW)	308
* Estimated Solar Roof Top PV	2320
Total Generation (Including estimated figures)	46,755

* Estimated figures of CEB generation report

Table 02

	Installed Capacity (MW)
CEB Hydro	1533
CEB Coal	810
CEB Thermal Oil	773.1
IPP Thermal Oil (West Coast)	490
IPP Wind	163
CEB Wind	100
Mini Hydro	422
IPP Waste heat + Biomass	54
IPP Solar	137
Rooftop Solar (Ordinary)	326
Rooftop Solar (LT Bulk)	285
Rooftop Solar (HT Bulk)	79

Data Source - Monthly Review Report [Jan-2024]

2. Cumulative Dispatch

Following data excludes the contribution from roof top solar, non telemetered solar and mini hydro plants

Table 03 - Current Month

Category	Dispatch (GWh)	
CEB Hydro	385	34.42%
CEB Coal	394	35.18%
CEB Thermal Oil	36	3.26%
IPP Thermal	16	1.39%
SPP Wind	49	4.37%
CEB Wind	51	4.59%
Mini Hydro *	106	9.49%
IPP Solar *	75	6.68%
IPP Waste heat + BMP	7	0.62%
Total	1,119	

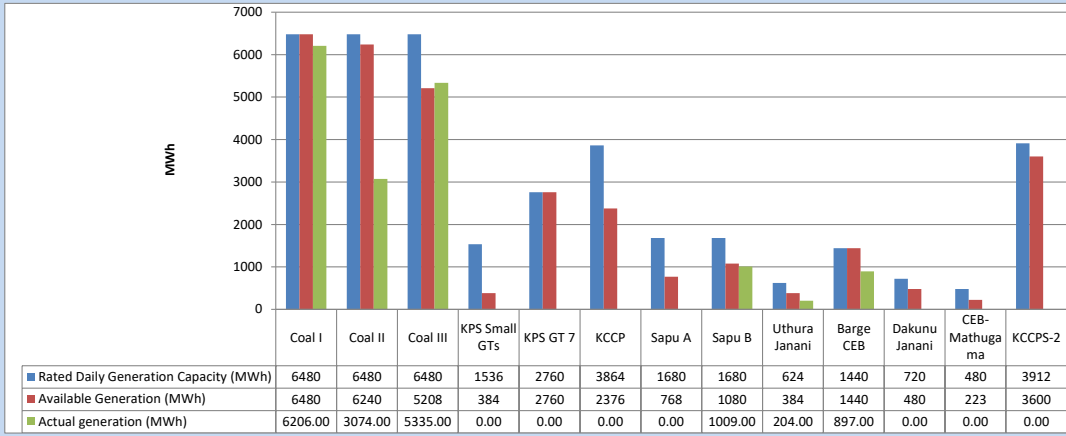
Table 04 - Current Year

Category	Dispatch (GWh)	
CEB Hydro	2,425	30.41%
CEB Coal	2,929	36.75%
CEB Thermal Oil	815	10.22%
IPP Thermal	433	5.43%
SPP Wind	140	1.75%
CEB Wind	145	1.82%
Mini Hydro *	538	6.75%
IPP Solar *	476	5.97%
IPP Waste heat	71	0.89%
Total	7,972	

*Including estimated contribution from non telemetered plants

3. CEB owned Thermal Plant Dispatch

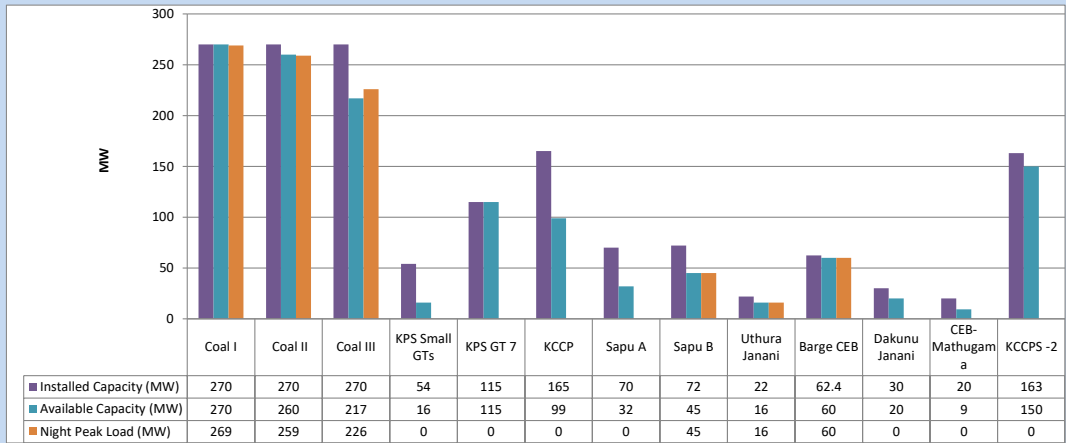
June 25, 2024



Available Generation is estimated based on plant availability at 6.00am on

June 26, 2024

4. CEB owned Thermal Plant Loading at the Night Peak

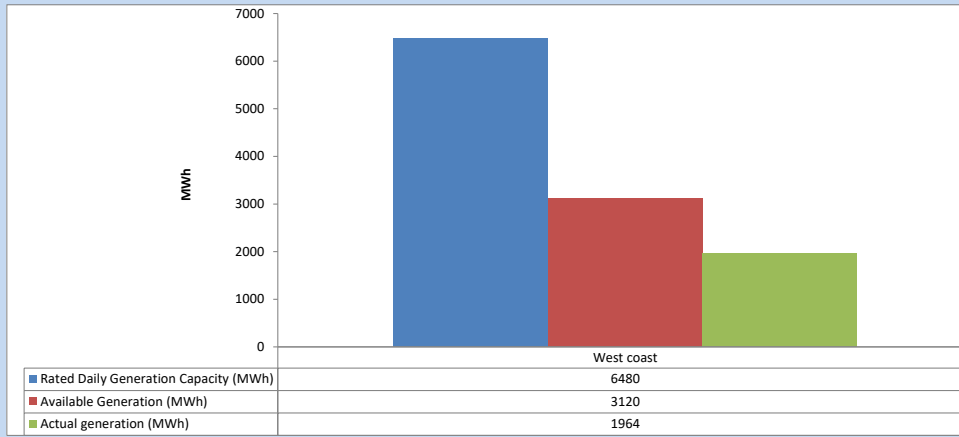


Plant availability is recorded at 6.00 am on

June 26, 2024

5. IPP owned Thermal Plant Dispatch

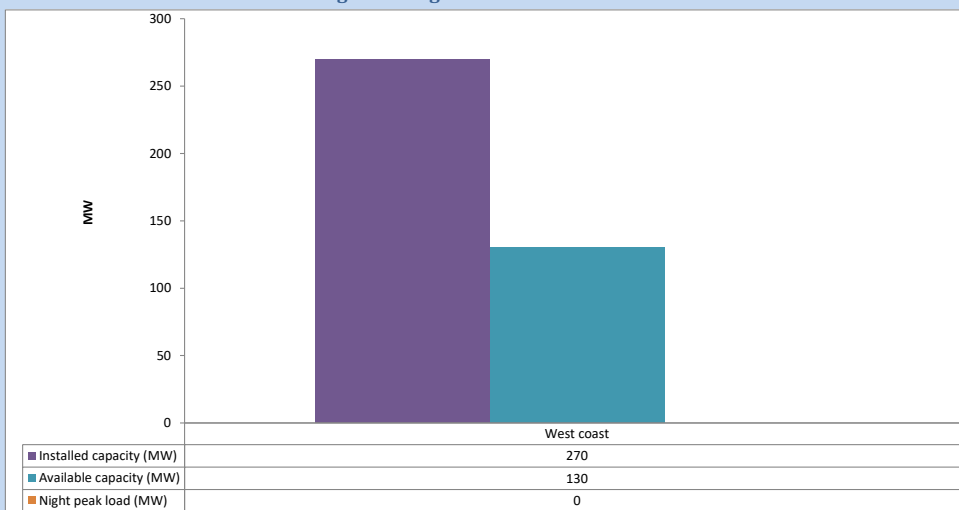
June 25, 2024



Available Generation is estimated based on plant availability at 6.00am on

June 26, 2024

6. IPP owned Thermal Plant Loading at the Night Peak

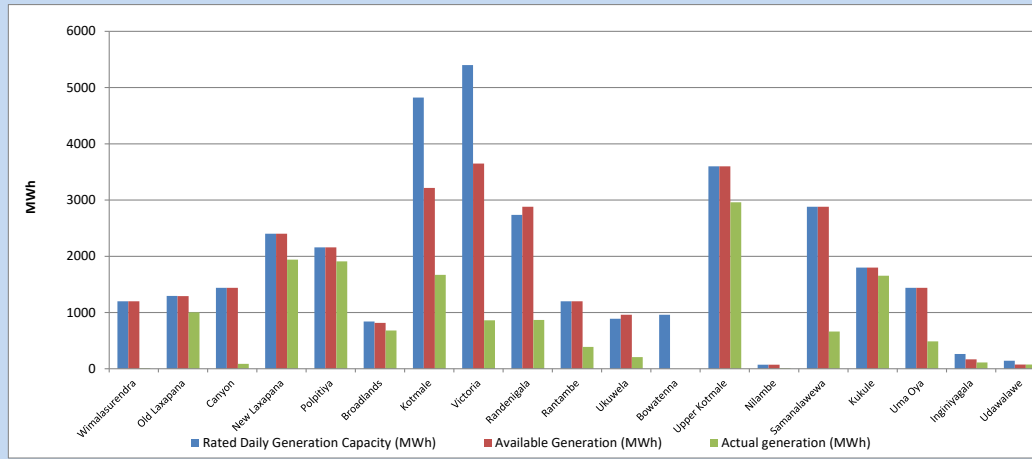


Plant availability is recorded at 6.00 am on

June 26, 2024

7. Major Hydro Plant Dispatch

June 25, 2024

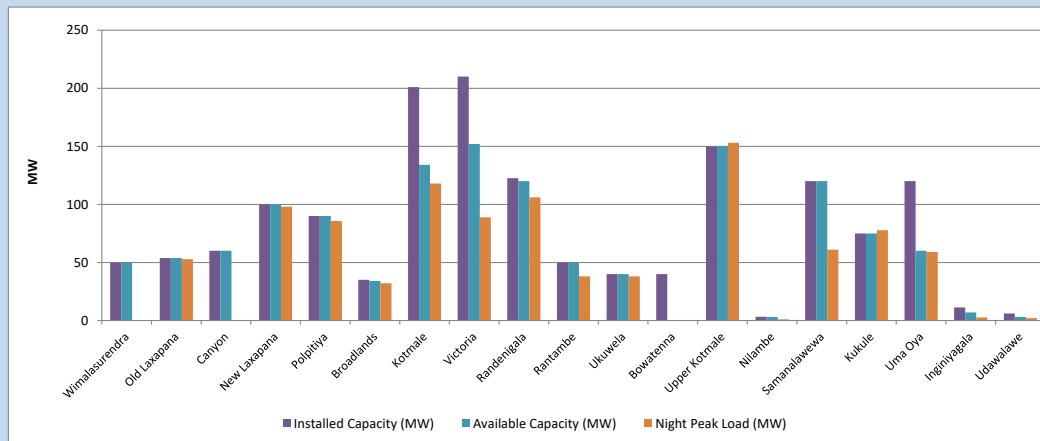


Available Generation is estimated based on plant availability at 6.00am on
Broadlands power plant is operating in the Commissioning Stage

June 26, 2024

8. Major Hydro Plant Loading at Night Peak

June 25, 2024



Plant availability is recorded at 6.00 am on
Broadlands power plant is operating in the Commissioning Stage

June 26, 2024

9. Summary of Major Plant performance

Table 05

Plant	Maximum Available Total Capacity	Plant Availability	Night peak Load	Plant Dispatch
	(MW)	(MW)	(MW)	(MWh)
Wimalasurendra	50	50	0	10
Old Laxapana	54	54	53	1,003
Canyon	60	60	0	88
New Laxapana	100	100	98	1,939
Polpitiya	90	90	86	1,910
Broadlands	35	34	32	679
Kotmale	201	134	118	1,670
Victoria	210	152	89	862
Randenigala	123	120	106	869
Rantambe	50	50	38	390
Ukuwela	40	40	38	206
Bowatenna	40	0	0	0
Upper Kotmale	150	150	153	2,960
Nilambe	3	3	1	12
Samanalawewa	120	120	61	663
Kukule	75	75	78	1,656
Uma Oya (Testing)	120	60	59	487
Inginiyagala	11	7	3	112
Udawalawe	6	3	2	76
Puttalam Coal I	270	270	269	6,206
Puttalam Coal II	270	260	259	3,074
Puttalam Coal III	270	217	226	5,335
KPS Small GTs	54	16	0	0
KPS GT 7	115	115	0	0
KCCP	165	99	0	0
Sapugaskanda A	70	32	0	0
Sapugaskanda B	72	45	45	1,009
Uthura Janani	22	16	16	204
Barge CEB	62	60	60	897
CEB-Hambantota	30	20	0	0
CEB-Mathugama	20	9	0	0
ACE Matara	24	0	0	0
Asia Power	50	0	0	0
KCCPS -2	163	150	0	0
West Coast	270	130	0	1,964
Nothern Power	36	0	0	0
ACE Embilipitiya	93	0	0	0
Sobadhanavi	220	0	0	0
Total	3,594	2,741	2,312	43,856

Note-

Plant availability is the availability recorded at 6 am on
Installed Capacity is sourced from CEB Annual Report- 2022

June 26, 2024

10. Contribution to the Night Peak in MW

June 25, 2024

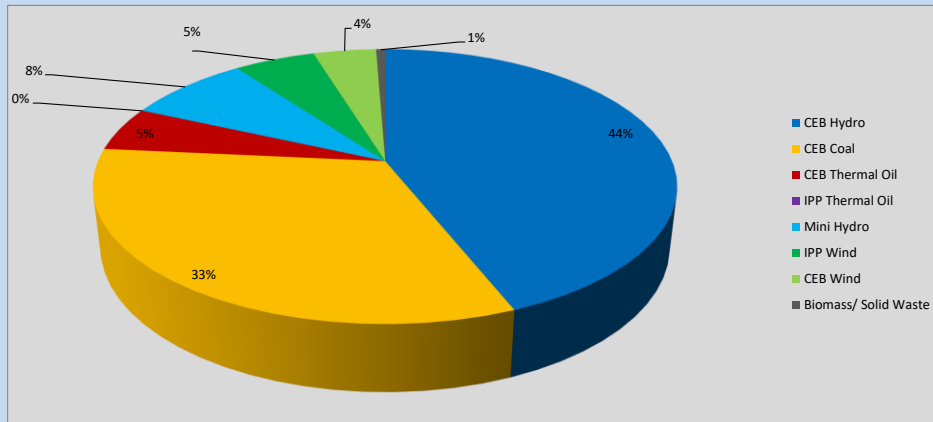


Table 06

CEB Hydro	1017	MW
CEB Coal	754	MW
CEB Thermal Oil	121	MW
IPP Thermal Oil	0	MW
Mini Hydro (Telemetered)	189	MW
IPP Wind	124	MW
CEB Wind	96.3	MW
Biomass/ Solid Waste	14	MW

Recorded Peak Demand Data

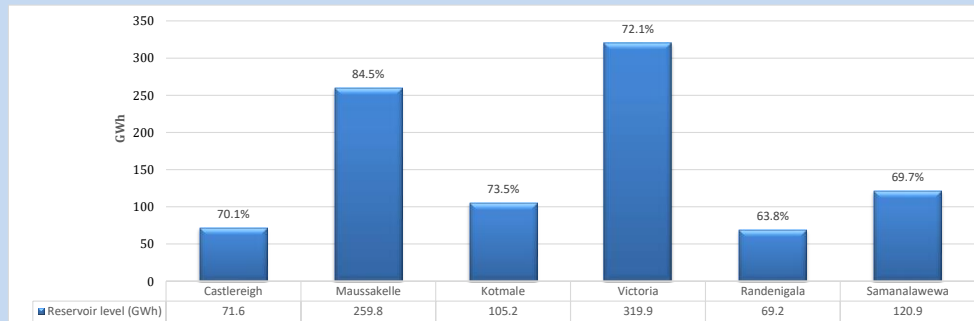
Table 07

Night Peak*	2,316	MW
Day Peak Maximum Demand	2,074	MW
Day Peak Minimum Demand	1,742	MW
Off Peak Minimum Demand	1,415	MW

Above figures are excluding contribution from roof top solar, non telemetered solar and mini hydro plants

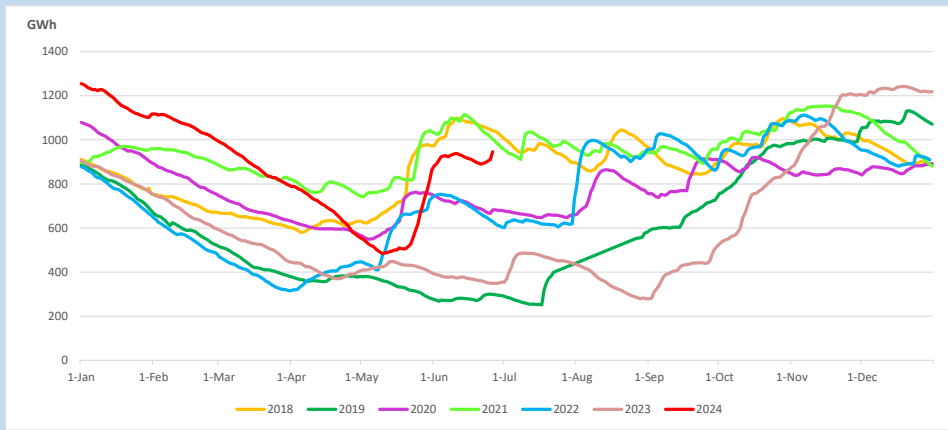
Reservoir Levels -

as at 06.00 Hr on June 26, 2024

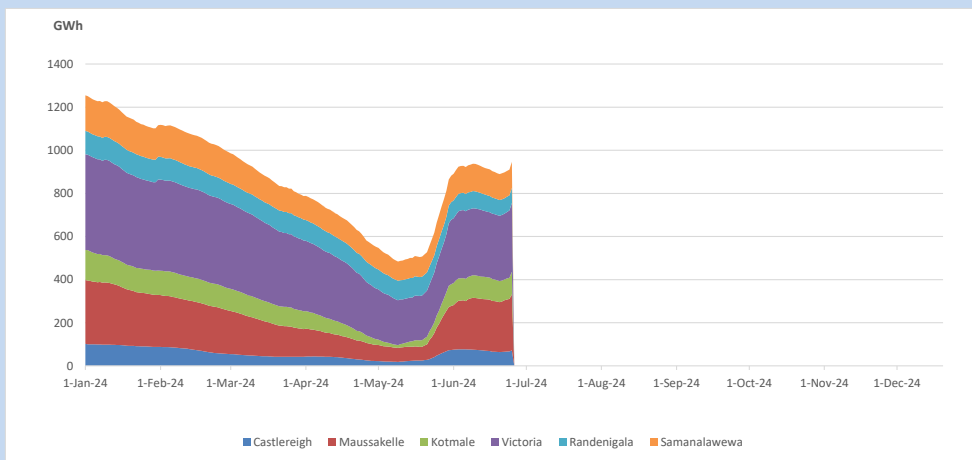


Total Reservoir Level 946.6 GWh
% of Total capacity 74.0%

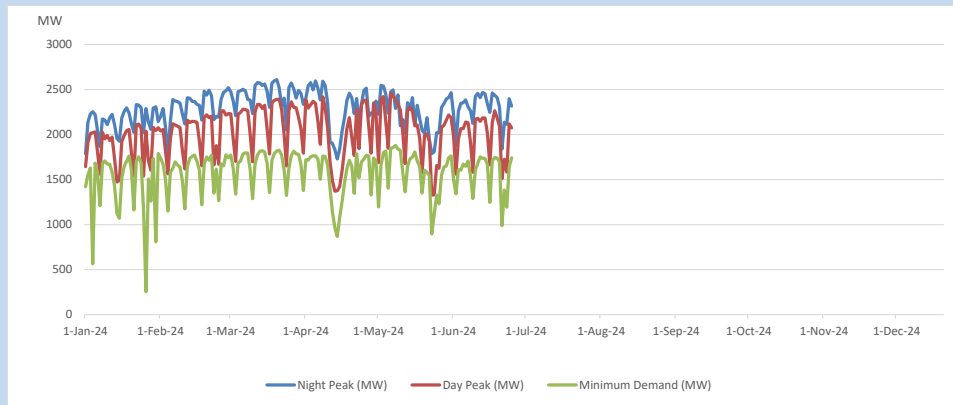
11. Comparison of Total Reservoir Storage Levels with Past Years



12. Variation of Major Hydro Reservoir Levels in the current year (GWh)



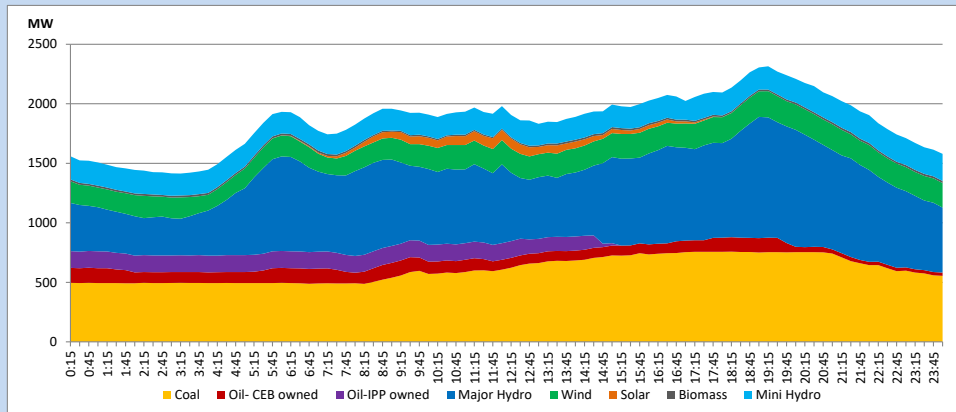
13. Variation of Demand during the current year



The above figures are excluding contribution from roof top solar, non telemetered solar and mini hydro plants

14. Daily Load Curve

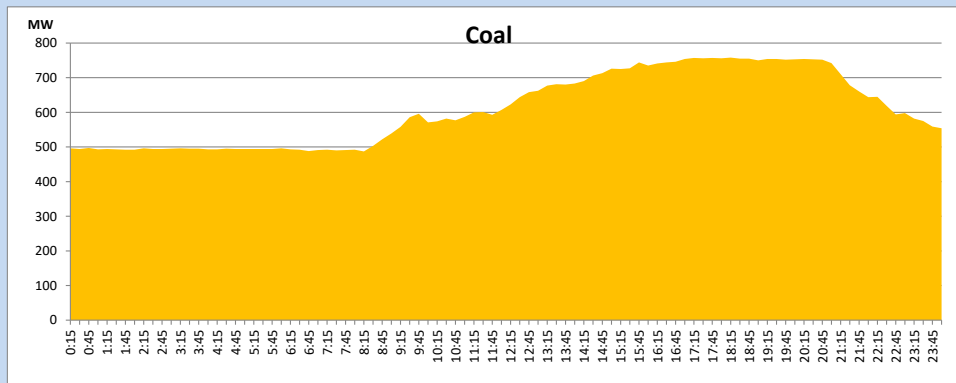
June 25, 2024



Solar and wind data is based on Telemetered Power Stations only

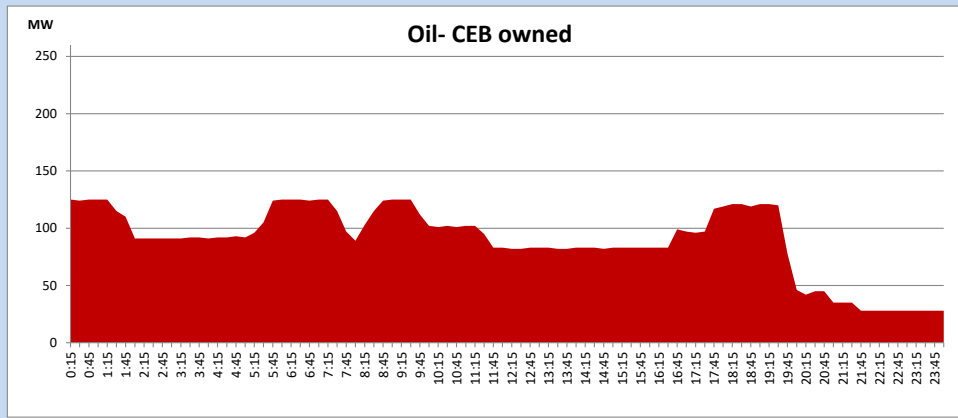
Coal Generation during

June 25, 2024



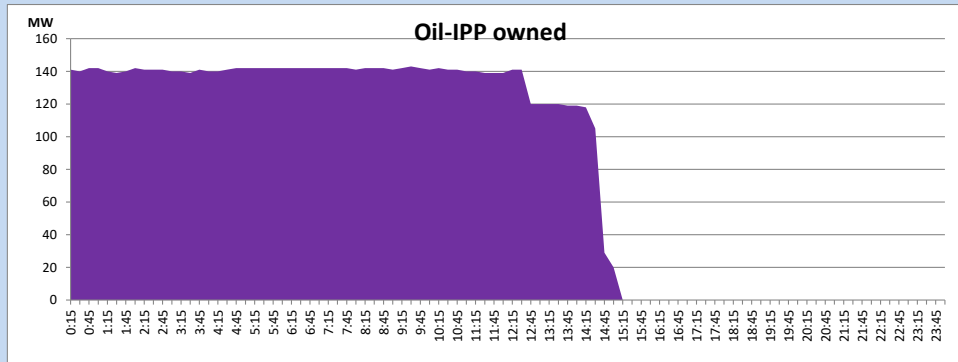
CEB Oil Plant Generation during

June 25, 2024



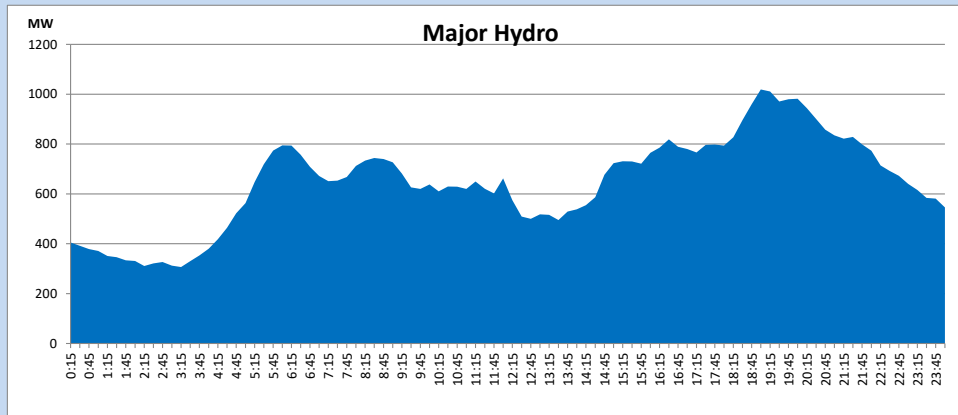
IPP Oil Plant Generation during

June 25, 2024



Major Hydro Generation during

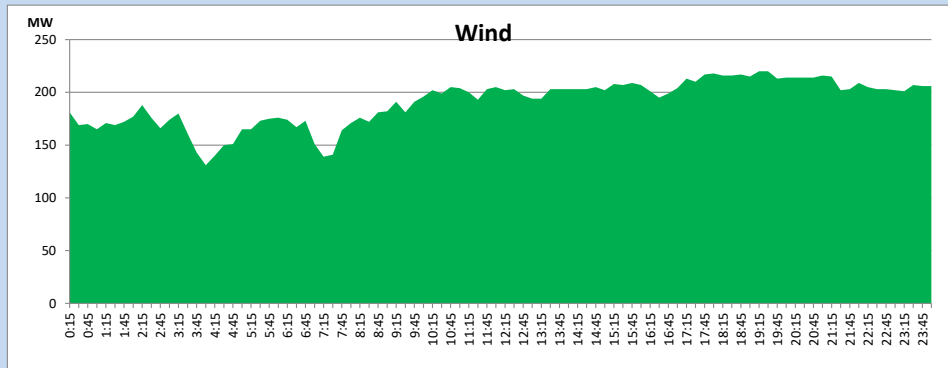
June 25, 2024



Wind Generation during

June 25, 2024

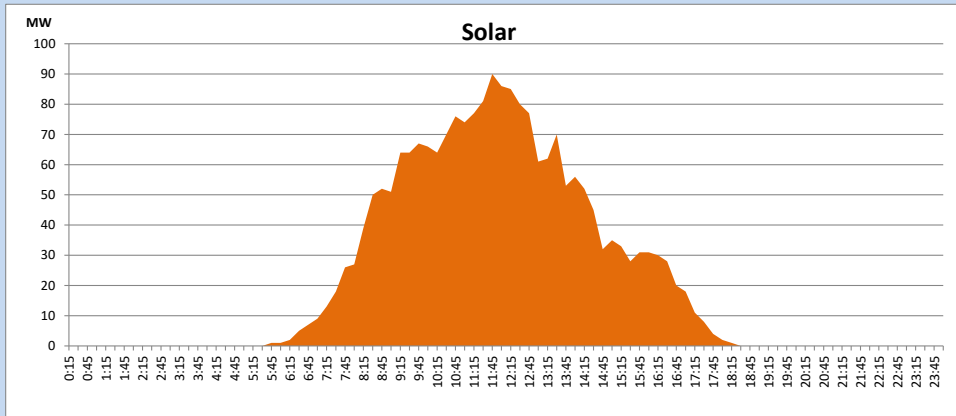
Based on Telemetered Power Stations only



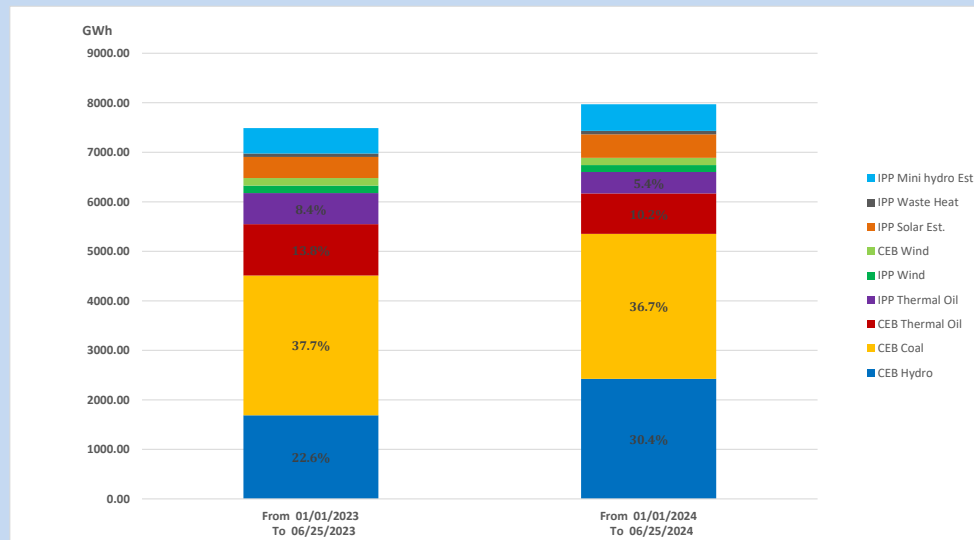
Solar Generation during

June 25, 2024

Based on Telemetered Power Stations only



15. Cumulative Dispatch Comparison with Last Year



Cumulative dispatch

From 01/01/2023 To 06/25/2023

7490 GWh

From 01/01/2024 To 06/25/2024

7972 GWh

The above figures are including contribution from roof top solar, non telemetered solar and mini hydro plants)

Unserviced energy due to power cuts has been excluded in 2023

Thermal Plant Fuel types

Table 08

Power Station	Primary Fuel
CEB Thermal	
Sapugaskanda 1	Heavy Fuel
Sapugaskanda 2	Heavy Fuel
Kelanitissa Small Gas Turbines	Auto Diesel
GT 7 - Kelanitissa	Auto Diesel
Kelanitissa CCY	Naphtha or Diesel
Lakvijaya 1	Coal
Lakvijaya 2	Coal
Lakvijaya 3	Coal
Uthuru Janani	Heavy Fuel
Barge CEB	Heavy Fuel
KCCPS -2	Auto Diesel

Power Station	Primary Fuel
Private Thermal	
West Coast	Auto Diesel / Heavy Fuel
Sobadhanavi	Auto Diesel

Major Incidents reported during the day

June 25, 2024

- 1) LVPS 02 tripped on 24.06.2024, resumed generation and reached full load 260MW(net) at 17:10hrs.
- 2) Biyagama 220/132/33kV T/F 02 was manually switched off from all ends at 20:57hrs due to high moisture content in OLTC. The T/F is yet to be normalized.
- 3) Laxapana pond spilling started at 06:40hrs and stopped at 11:10hrs. Norton pond spilling started at 07:07hrs and stopped at 10:15hrs.
- 4) Upper Kotmale spilling started at 09:38hrs and stopped at 05:00hrs (26.06.2024).
- 5) Kukule spilling started at 11:55hrs and continues to the present hour.