

Generation and Reservoirs Statistics

June 24, 2024



PUBLIC UTILITIES COMMISSION OF SRI LANKA

1. Daily Generation Mix in MWh

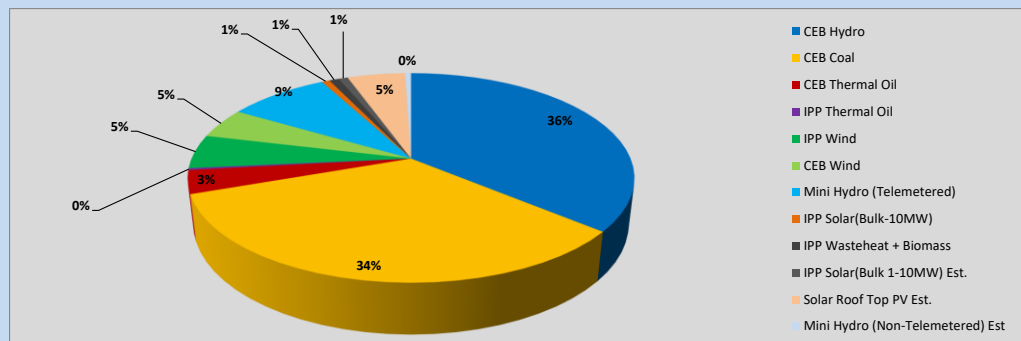


Table 01

	Generation (MWh)
CEB Hydro	16,718
CEB Coal	15,614
CEB Thermal Oil	1,665
IPP Thermal Oil	131
IPP Wind	2,429
CEB Wind	2,178
Mini Hydro (Telemetered)	4,050
IPP Solar (Bulk)	314
IPP Waste heat + Biomass	392
Total Generation (Excluding estimated figures)	43,491
* Estimated unserved energy	0
* Estimated Mini Hydro (Non telemetered)	244
* Estimated IPP Solar PV (Bulk 1-10MW)	369
* Estimated Solar Roof Top PV	2320
Total Generation (Including estimated figures)	46,424

* Estimated figures of CEB generation report

Table 02

	Installed Capacity (MW)
CEB Hydro	1533
CEB Coal	810
CEB Thermal Oil	773.1
IPP Thermal Oil (West Coast)	490
IPP Wind	163
CEB Wind	100
Mini Hydro	422
IPP Waste heat + Biomass	54
IPP Solar	137
Rooftop Solar (Ordinary)	326
Rooftop Solar (LT Bulk)	285
Rooftop Solar (HT Bulk)	79

Data Source - Monthly Review Report [Jan-2024]

2. Cumulative Dispatch

Following data excludes the contribution from roof top solar, non telemetered solar and mini hydro plants

Table 03 - Current Month

Category	Dispatch (GWh)	
CEB Hydro	370	34.47%
CEB Coal	379	35.35%
CEB Thermal Oil	34	3.20%
IPP Thermal	14	1.27%
SPP Wind	47	4.34%
CEB Wind	49	4.60%
Mini Hydro *	101	9.45%
IPP Solar *	72	6.70%
IPP Waste heat + BMP	7	0.61%
Total	1,072	

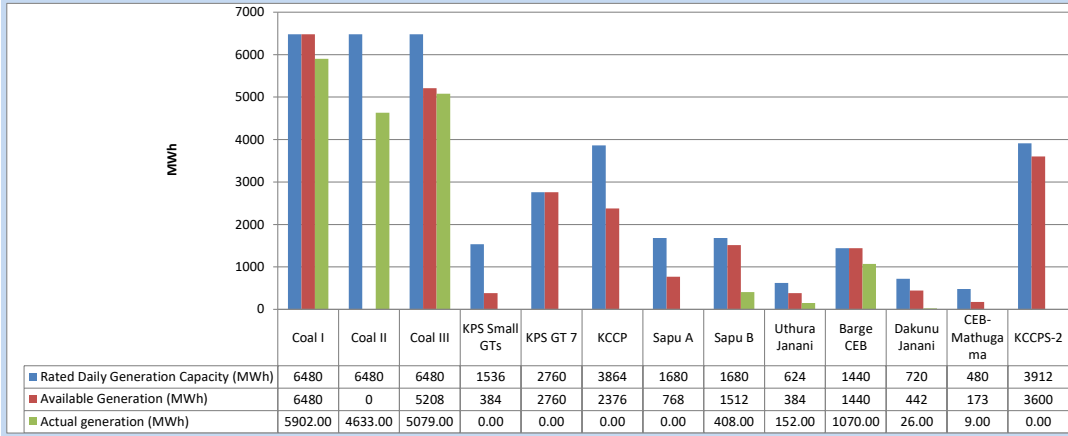
Table 04 - Current Year

Category	Dispatch (GWh)	
CEB Hydro	2,409	30.40%
CEB Coal	2,915	36.78%
CEB Thermal Oil	813	10.26%
IPP Thermal	431	5.44%
SPP Wind	137	1.73%
CEB Wind	143	1.81%
Mini Hydro *	533	6.73%
IPP Solar *	473	5.97%
IPP Waste heat	71	0.90%
Total	7,925	

*Including estimated contribution from non telemetered plants

3. CEB owned Thermal Plant Dispatch

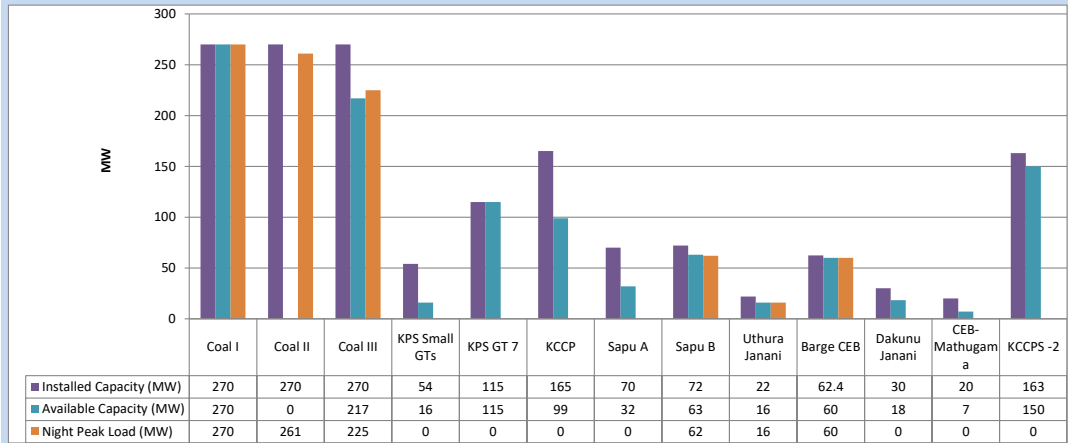
June 24, 2024



Available Generation is estimated based on plant availability at 6.00am on

June 25, 2024

4. CEB owned Thermal Plant Loading at the Night Peak

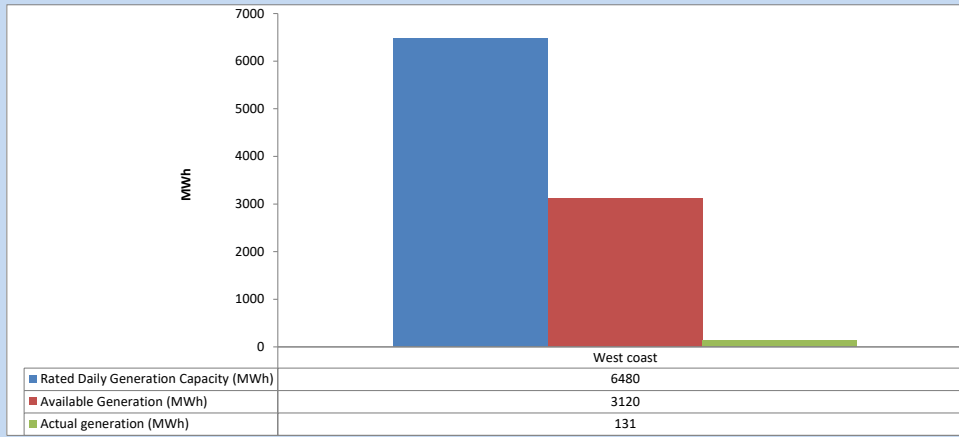


Plant availability is recorded at 6.00 am on

June 25, 2024

5. IPP owned Thermal Plant Dispatch

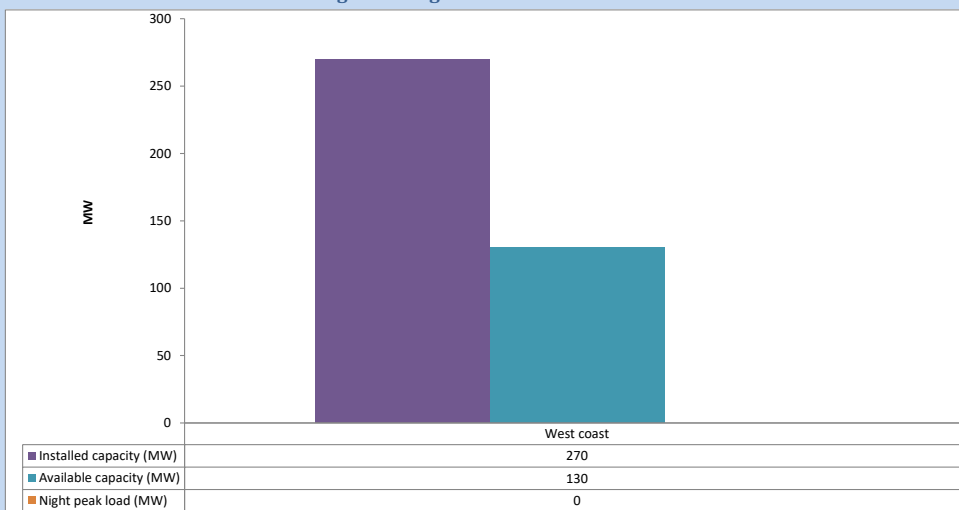
June 24, 2024



Available Generation is estimated based on plant availability at 6.00am on

June 25, 2024

6. IPP owned Thermal Plant Loading at the Night Peak

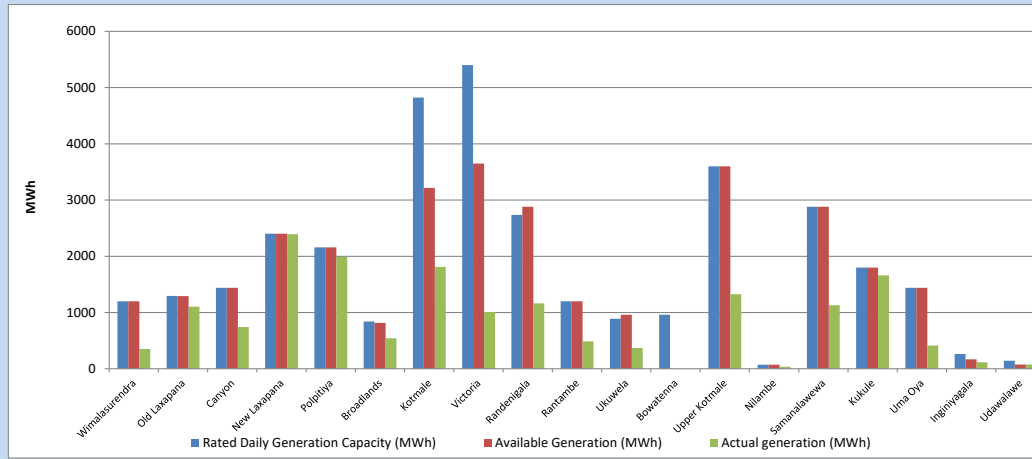


Plant availability is recorded at 6.00 am on

June 25, 2024

7. Major Hydro Plant Dispatch

June 24, 2024

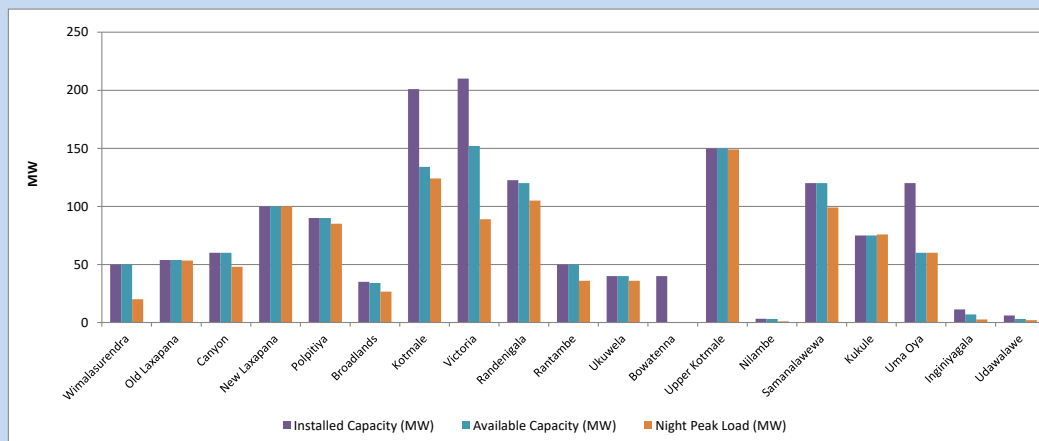


Available Generation is estimated based on plant availability at 6.00am on
Broadlands power plant is operating in the Commissioning Stage

June 25, 2024

8. Major Hydro Plant Loading at Night Peak

June 24, 2024



Plant availability is recorded at 6.00 am on
Broadlands power plant is operating in the Commissioning Stage

June 25, 2024

9. Summary of Major Plant performance

Table 05

Plant	Maximum Available Total Capacity	Plant Availability	Night peak Load	Plant Dispatch
	(MW)	(MW)	(MW)	(MWh)
Wimalasurendra	50	50	20	353
Old Laxapana	54	54	53	1,103
Canyon	60	60	48	743
New Laxapana	100	100	100	2,391
Polpitiya	90	90	85	1,990
Broadlands	35	34	27	543
Kotmale	201	134	124	1,810
Victoria	210	152	89	1,009
Randenigala	123	120	105	1,162
Rantambe	50	50	36	487
Ukuwela	40	40	36	369
Bowatenna	40	0	0	0
Upper Kotmale	150	150	149	1,325
Nilambe	3	3	1	36
Samanalawewa	120	120	99	1,128
Kukule	75	75	76	1,662
Uma Oya (Testing)	120	60	60	414
Inginiyagala	11	7	3	115
Udawalawe	6	3	2	76
Puttalam Coal I	270	270	270	5,902
Puttalam Coal II	270	0	261	4,633
Puttalam Coal III	270	217	225	5,079
KPS Small GTs	54	16	0	0
KPS GT 7	115	115	0	0
KCCP	165	99	0	0
Sapugaskanda A	70	32	0	0
Sapugaskanda B	72	63	62	408
Uthura Janani	22	16	16	152
Barge CEB	62	60	60	1,070
CEB-Hambantota	30	18	0	26
CEB-Mathugama	20	7	0	9
ACE Matara	24	0	0	0
Asia Power	50	0	0	0
KCCPS -2	163	150	0	0
West Coast	270	130	0	131
Nothern Power	36	0	0	0
ACE Embilipitiya	93	0	0	0
Sobadhanavi	220	0	0	0
Total	3,594	2,496	2,394	43,489

Note-

Plant availability is the availability recorded at 6 am on
Installed Capacity is sourced from CEB Annual Report- 2022

June 25, 2024

10. Contribution to the Night Peak in MW

June 24, 2024

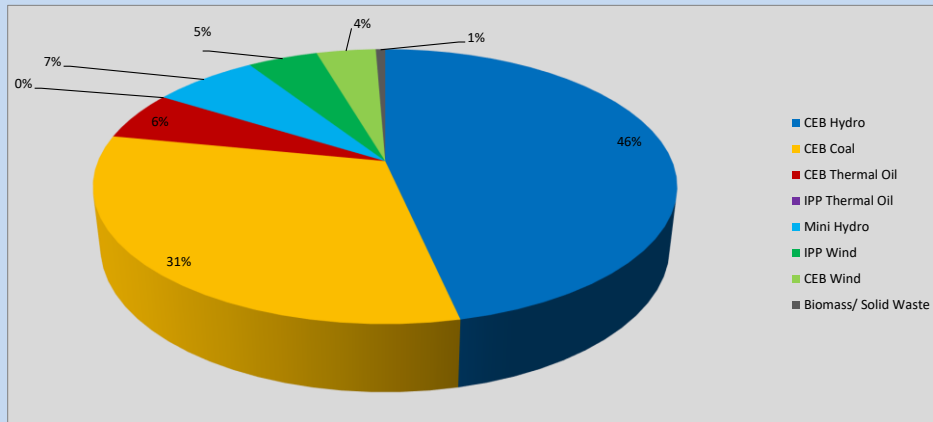


Table 06

CEB Hydro	1116	MW
CEB Coal	756	MW
CEB Thermal Oil	138	MW
IPP Thermal Oil	0	MW
Mini Hydro (Telemetered)	167	MW
IPP Wind	111.3	MW
CEB Wind	94.2	MW
Biomass/ Solid Waste	15	MW

Recorded Peak Demand Data

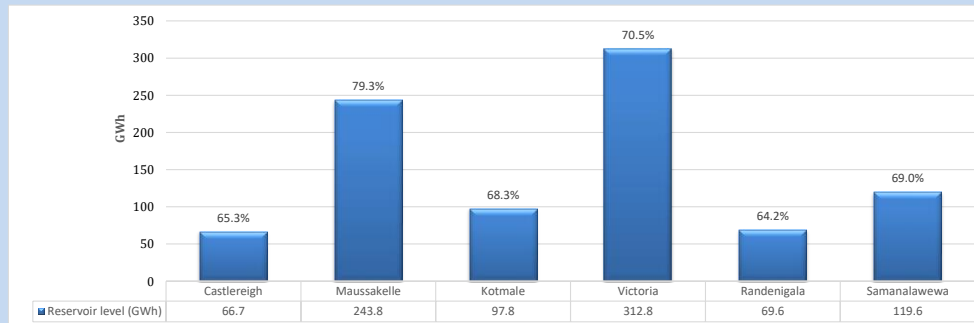
Table 07

Night Peak*	2,398	MW
Day Peak Maximum Demand	2,117	MW
Day Peak Minimum Demand	1,640	MW
Off Peak Minimum Demand	1,312	MW

Above figures are excluding contribution from roof top solar, non telemetered solar and mini hydro plants

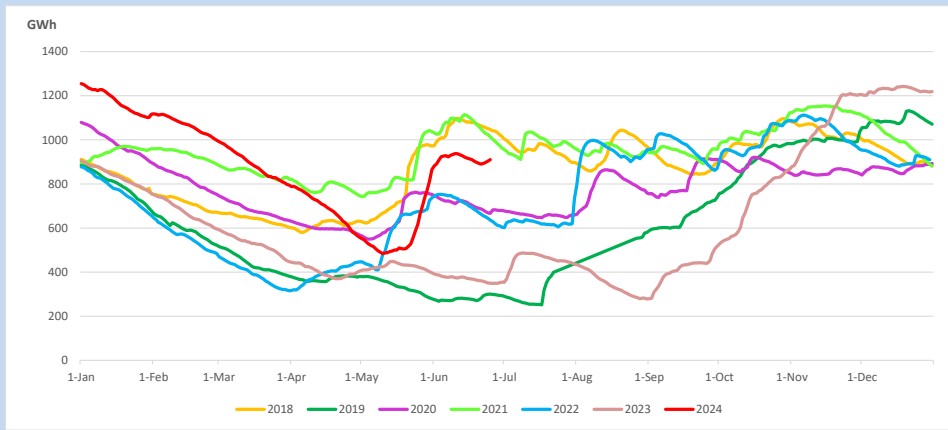
Reservoir Levels -

as at 06.00 Hr on June 25, 2024

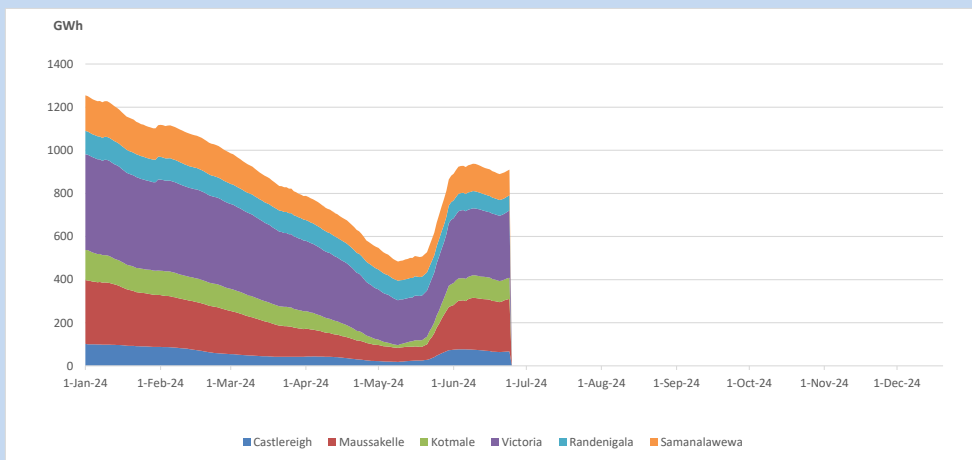


Total Reservoir Level 910.3 GWh
% of Total capacity 71.2%

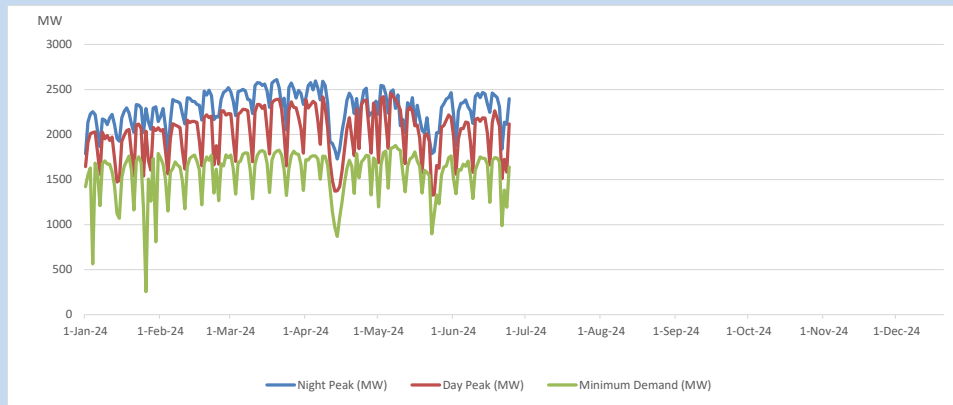
11. Comparison of Total Reservoir Storage Levels with Past Years



12. Variation of Major Hydro Reservoir Levels in the current year (GWh)



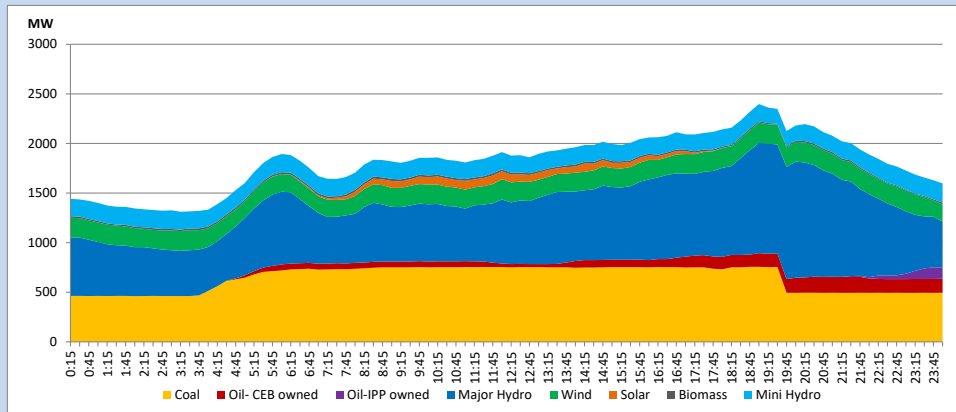
13. Variation of Demand during the current year



The above figures are excluding contribution from roof top solar, non telemetered solar and mini hydro plants

14. Daily Load Curve

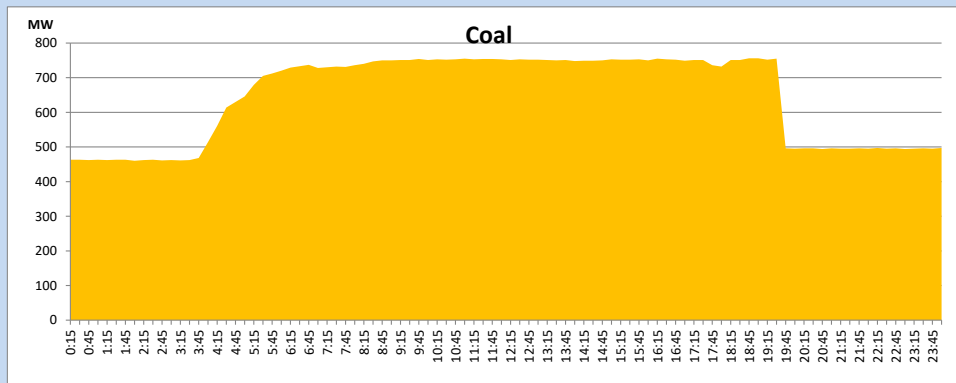
June 24, 2024



Solar and wind data is based on Telemetered Power Stations only

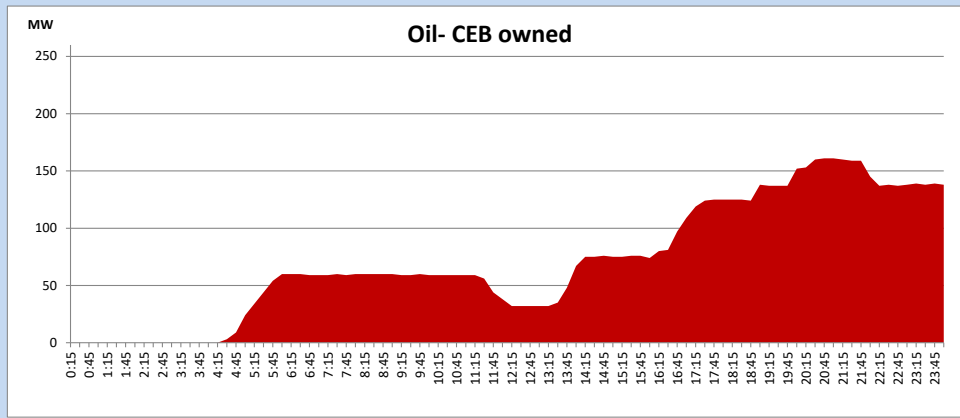
Coal Generation during

June 24, 2024



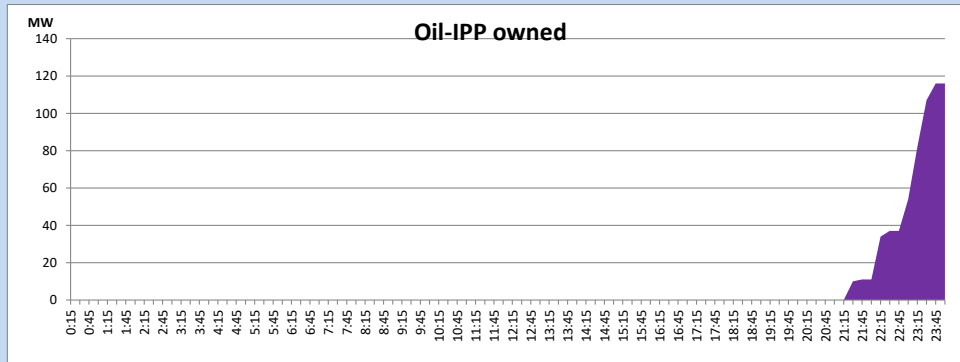
CEB Oil Plant Generation during

June 24, 2024



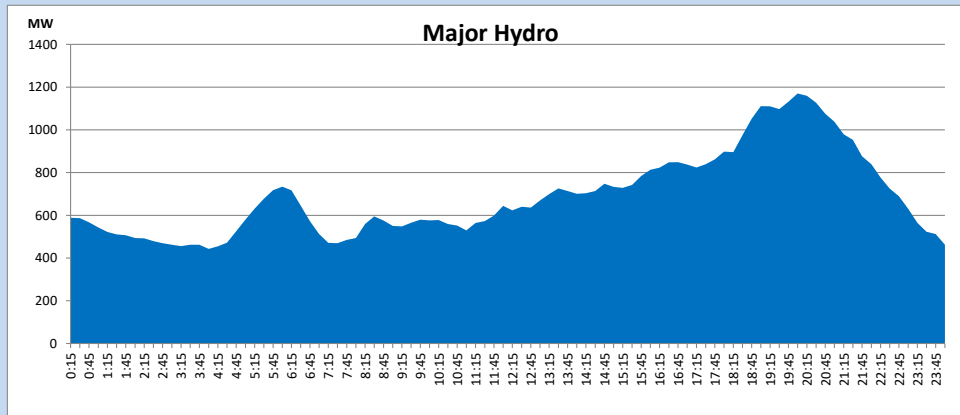
IPP Oil Plant Generation during

June 24, 2024



Major Hydro Generation during

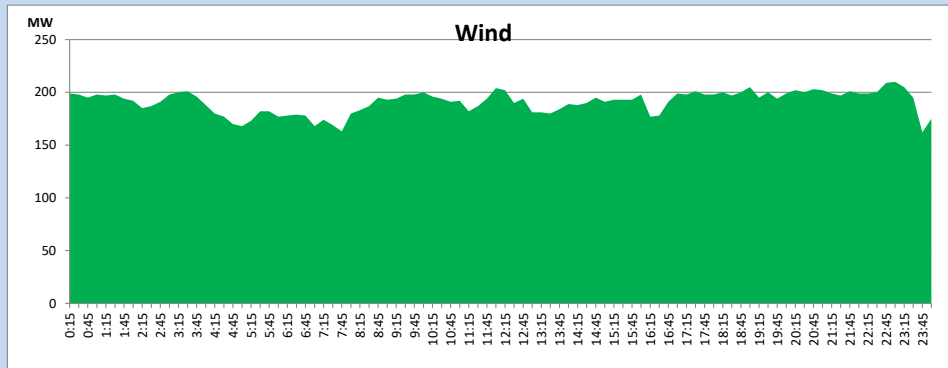
June 24, 2024



Wind Generation during

June 24, 2024

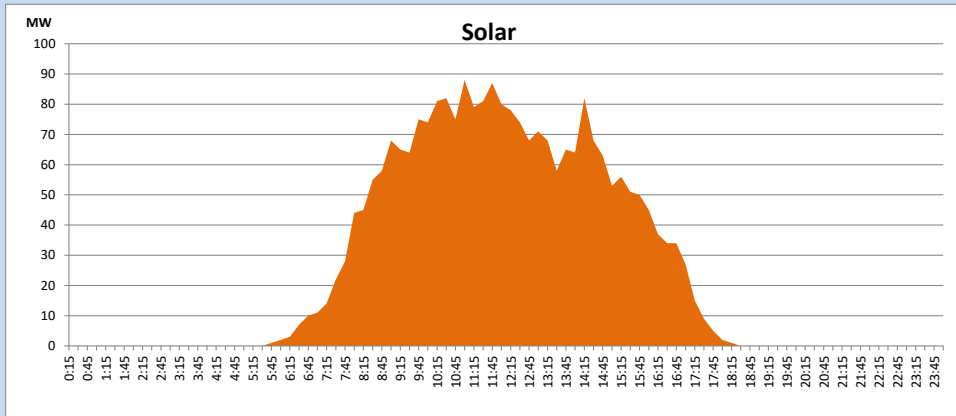
Based on Telemetered Power Stations only



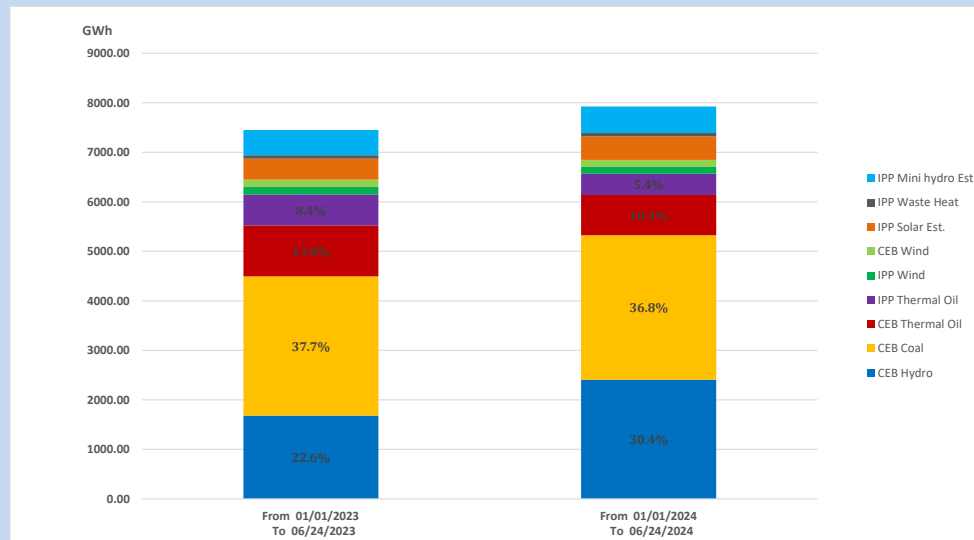
Solar Generation during

June 24, 2024

Based on Telemetered Power Stations only



15. Cumulative Dispatch Comparison with Last Year



Cumulative dispatch

From 01/01/2023 To 06/24/2023

7451 GWh

From 01/01/2024 To 06/24/2024

7925 GWh

The above figures are including contribution from roof top solar, non telemetered solar and mini hydro plants)

Unserviced energy due to power cuts has been excluded in 2023

Thermal Plant Fuel types

Table 08

Power Station	Primary Fuel
CEB Thermal	
Sapugaskanda 1	Heavy Fuel
Sapugaskanda 2	Heavy Fuel
Kelanitissa Small Gas Turbines	Auto Diesel
GT 7 - Kelanitissa	Auto Diesel
Kelanitissa CCY	Naphtha or Diesel
Lakvijaya 1	Coal
Lakvijaya 2	Coal
Lakvijaya 3	Coal
Uthuru Janani	Heavy Fuel
Barge CEB	Heavy Fuel
KCCPS -2	Auto Diesel

Power Station	Primary Fuel
Private Thermal	
West Coast	Auto Diesel / Heavy Fuel
Sobadhanavi	Auto Diesel

Major Incidents reported during the day

June 24, 2024

1) LVPS 02 tripped at 19:35hrs rejecting 260MW from the system due to the UAT failure. At the same time, Uma Oya Unit 01 automatically de-loaded from 60MW to 0 MW without any indication. Subsequently, the system recovered with the operation of UFLS up to Stage II. All the affected feeders were normalized by 20:20hrs. Uma oya unit 01 resumed generation at 20:42hrs and LVPS 02 is yet to resume generation.

2) New Galle - Deniyaya 132kV cct tripped and A/R from both ends at 21:01hrs due to the operation of distance protection.