

# Generation and Reservoirs Statistics

June 23, 2024



PUBLIC UTILITIES COMMISSION OF SRI LANKA

## 1. Daily Generation Mix in MWh

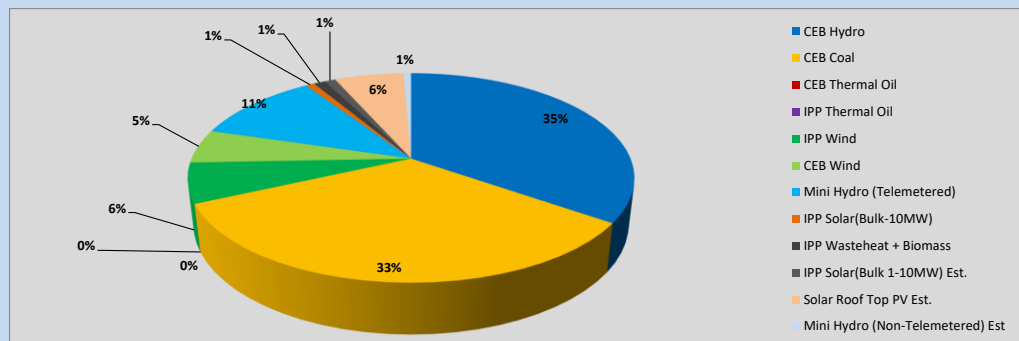


Table 01

	Generation (MWh)
CEB Hydro	13,465
CEB Coal	13,019
CEB Thermal Oil	-
IPP Thermal Oil	-
IPP Wind	2,395
CEB Wind	2,029
Mini Hydro (Telemetered)	4,297
IPP Solar (Bulk)	293
IPP Waste heat + Biomass	381
<b>Total Generation (Excluding estimated figures)</b>	<b>35,879</b>
* Estimated unserved energy	0
* Estimated Mini Hydro (Non telemetered)	259
* Estimated IPP Solar PV (Bulk 1-10MW)	367
* Estimated Solar Roof Top PV	2320
<b>Total Generation (Including estimated figures)</b>	<b>38,825</b>

\* Estimated figures of CEB generation report

Table 02

	Installed Capacity (MW)
CEB Hydro	1533
CEB Coal	810
CEB Thermal Oil	773.1
IPP Thermal Oil (West Coast)	490
IPP Wind	163
CEB Wind	100
Mini Hydro	422
IPP Waste heat + Biomass	54
IPP Solar	137
Rooftop Solar (Ordinary)	326
Rooftop Solar (LT Bulk)	285
Rooftop Solar (HT Bulk)	79

Data Source - Monthly Review Report [Jan-2024]

## 2. Cumulative Dispatch

Following data excludes the contribution from roof top solar, non telemetered solar and mini hydro plants

Table 03 - Current Month

Category	Dispatch (GWh)	
CEB Hydro	353	34.40%
CEB Coal	364	35.43%
CEB Thermal Oil	33	3.18%
IPP Thermal	14	1.32%
SPP Wind	44	4.30%
CEB Wind	47	4.59%
Mini Hydro *	97	9.46%
IPP Solar *	69	6.71%
IPP Waste heat + BMP	6	0.60%
<b>Total</b>	<b>1,026</b>	

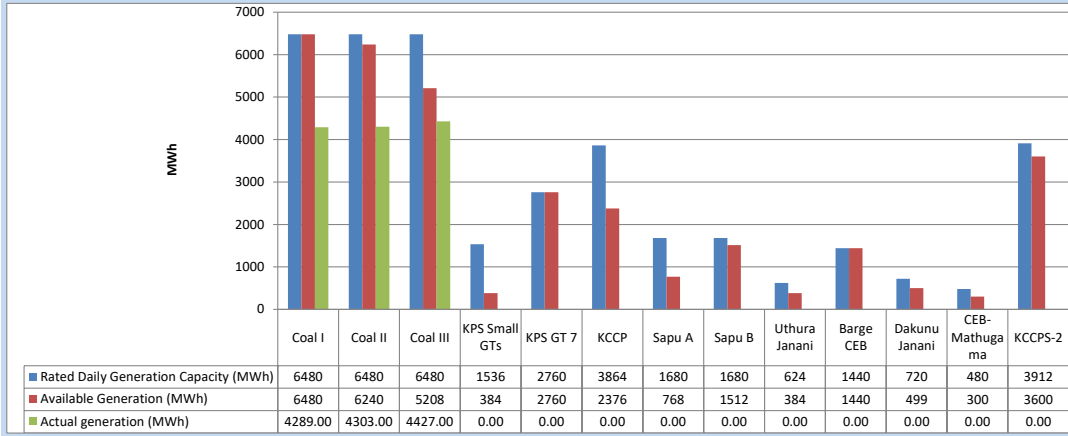
Table 04 - Current Year

Category	Dispatch (GWh)	
CEB Hydro	2,392	30.36%
CEB Coal	2,899	36.80%
CEB Thermal Oil	811	10.29%
IPP Thermal	431	5.47%
SPP Wind	135	1.71%
CEB Wind	141	1.79%
Mini Hydro *	529	6.71%
IPP Solar *	470	5.97%
IPP Waste heat	71	0.90%
<b>Total</b>	<b>7,879</b>	

\*Including estimated contribution from non telemetered plants

### 3. CEB owned Thermal Plant Dispatch

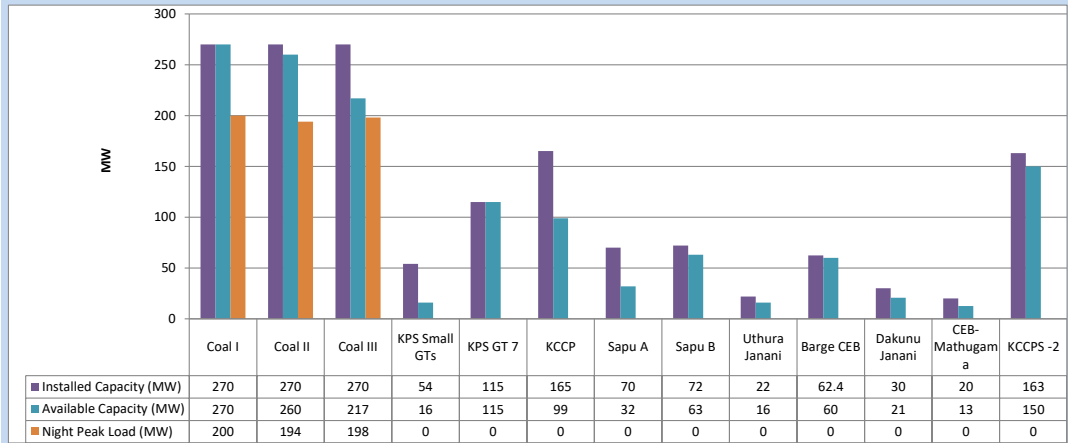
June 23, 2024



Available Generation is estimated based on plant availability at 6.00am on

June 24, 2024

### 4. CEB owned Thermal Plant Loading at the Night Peak

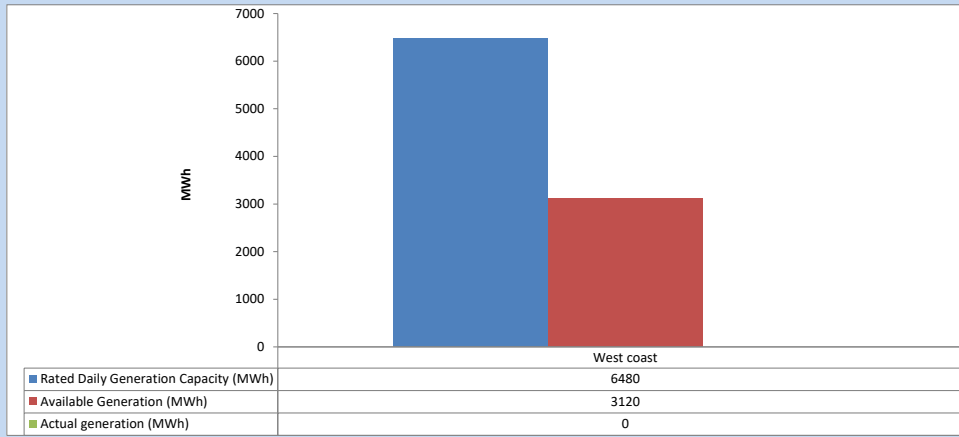


Plant availability is recorded at 6.00 am on

June 24, 2024

### 5. IPP owned Thermal Plant Dispatch

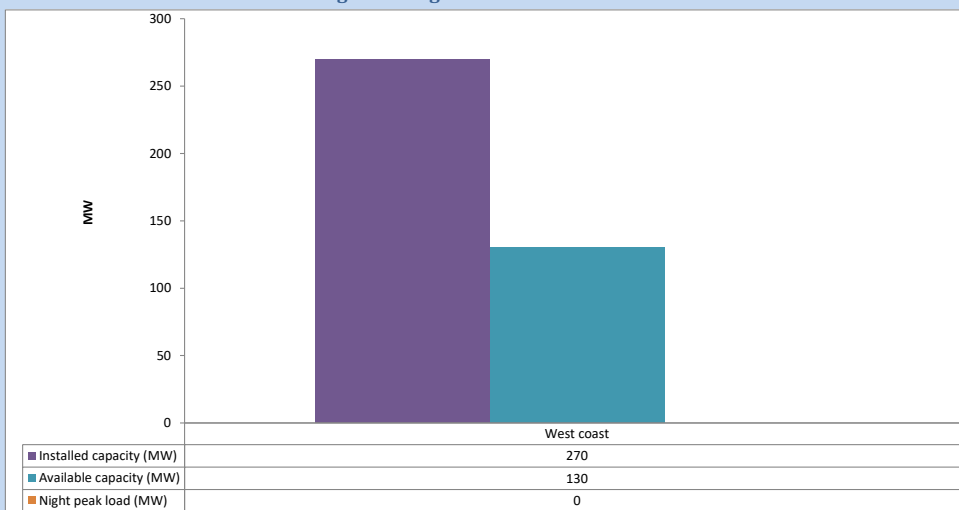
June 23, 2024



Available Generation is estimated based on plant availability at 6.00am on

June 24, 2024

### 6. IPP owned Thermal Plant Loading at the Night Peak

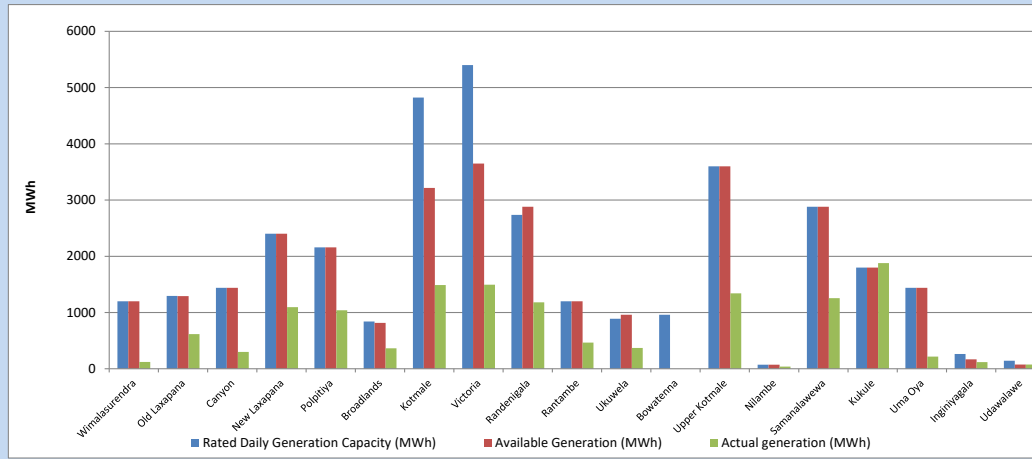


Plant availability is recorded at 6.00 am on

June 24, 2024

## 7. Major Hydro Plant Dispatch

June 23, 2024

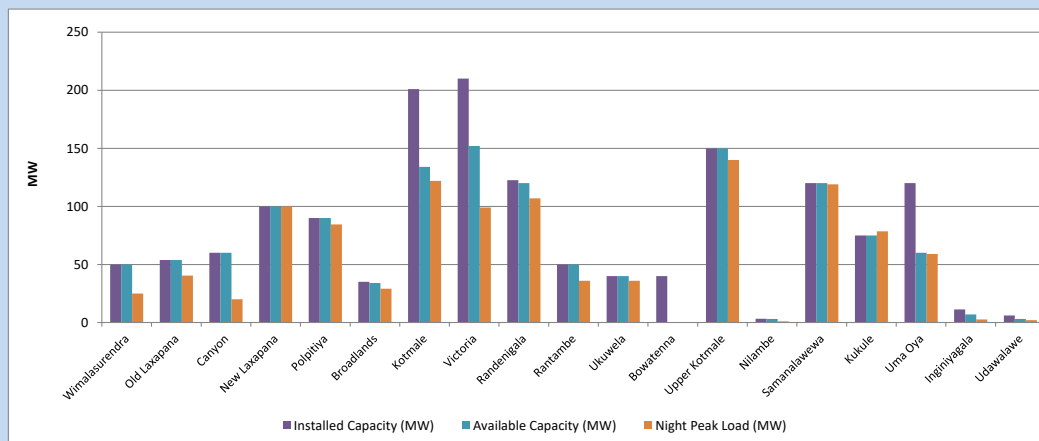


Available Generation is estimated based on plant availability at 6.00am on  
Broadlands power plant is operating in the Commissioning Stage

June 24, 2024

## 8. Major Hydro Plant Loading at Night Peak

June 23, 2024



Plant availability is recorded at 6.00 am on  
Broadlands power plant is operating in the Commissioning Stage

June 24, 2024

## 9. Summary of Major Plant performance

Table 05

Plant	Maximum Available Total Capacity	Plant Availability	Night peak Load	Plant Dispatch
	(MW)	(MW)	(MW)	(MWh)
Wimalasurendra	50	50	25	121
Old Laxapana	54	54	40	617
Canyon	60	60	20	300
New Laxapana	100	100	100	1,096
Polpitiya	90	90	85	1,040
Broadlands	35	34	29	363
Kotmale	201	134	122	1,490
Victoria	210	152	99	1,496
Randenigala	123	120	107	1,180
Rantambe	50	50	36	465
Ukuwela	40	40	36	369
Bowatenna	40	0	0	0
Upper Kotmale	150	150	140	1,342
Nilambe	3	3	1	38
Samanalawewa	120	120	119	1,255
Kukule	75	75	79	1,880
Uma Oya (Testing )	120	60	59	218
Inginiyagala	11	7	3	118
Udawalawe	6	3	2	76
Puttalam Coal I	270	270	200	4,289
Puttalam Coal II	270	260	194	4,303
Puttalam Coal III	270	217	198	4,427
KPS Small GTs	54	16	0	0
KPS GT 7	115	115	0	0
KCCP	165	99	0	0
Sapugaskanda A	70	32	0	0
Sapugaskanda B	72	63	0	0
Uthura Janani	22	16	0	0
Barge CEB	62	60	0	0
CEB-Hambantota	30	21	0	0
CEB-Mathugama	20	13	0	0
ACE Matara	24	0	0	0
Asia Power	50	0	0	0
KCCPS -2	163	150	0	0
West Coast	270	130	0	0
Nothern Power	36	0	0	0
ACE Embilipitiya	93	0	0	0
Sobadhanavi	220	0	0	0
<b>Total</b>	<b>3,594</b>	<b>2,763</b>	<b>2,111</b>	<b>35,878</b>

Note-

Plant availability is the availability recorded at 6 am on  
Installed Capacity is sourced from CEB Annual Report- 2022

June 24, 2024

### 10. Contribution to the Night Peak in MW

June 23, 2024

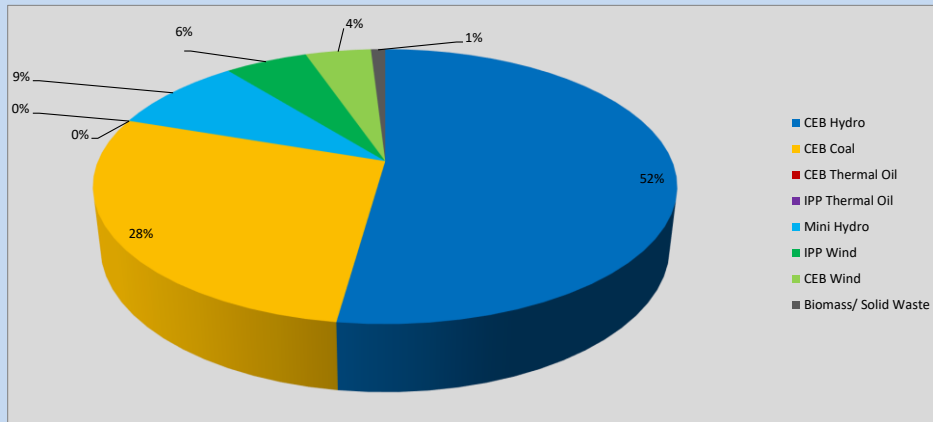


Table 06

CEB Hydro	1104	MW
CEB Coal	592	MW
CEB Thermal Oil	0	MW
IPP Thermal Oil	0	MW
Mini Hydro (Telemetered)	190	MW
IPP Wind	116.1	MW
CEB Wind	91.8	MW
Biomass/ Solid Waste	20	MW

### Recorded Peak Demand Data

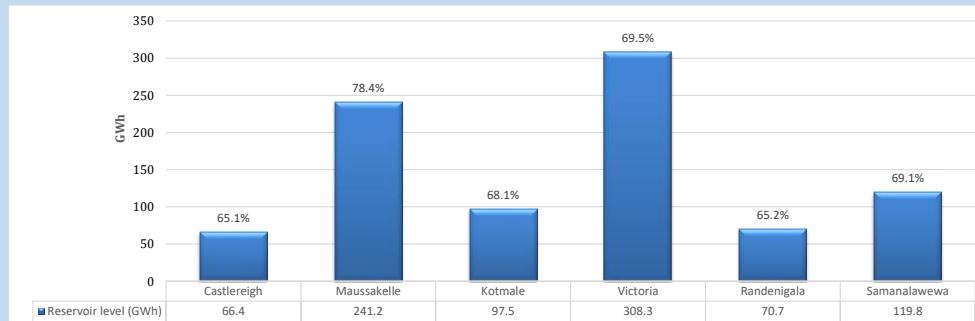
Table 07

Night Peak*	2,114	MW
Day Peak Maximum Demand	1,582	MW
Day Peak Minimum Demand	1,194	MW
Off Peak Minimum Demand	1,345	MW

Above figures are excluding contribution from roof top solar, non telemetered solar and mini hydro plants

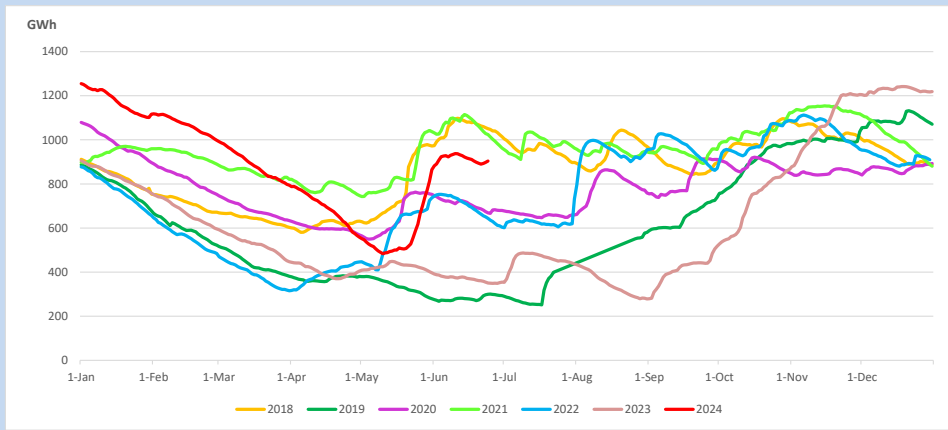
### Reservoir Levels -

as at 06.00 Hr on June 24, 2024

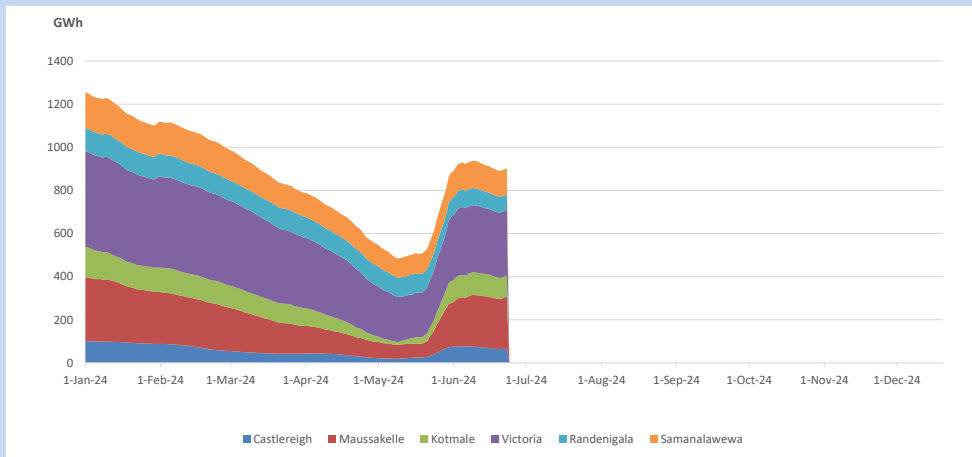


Total Reservoir Level 903.9 GWh  
% of Total capacity 70.7%

### 11. Comparison of Total Reservoir Storage Levels with Past Years

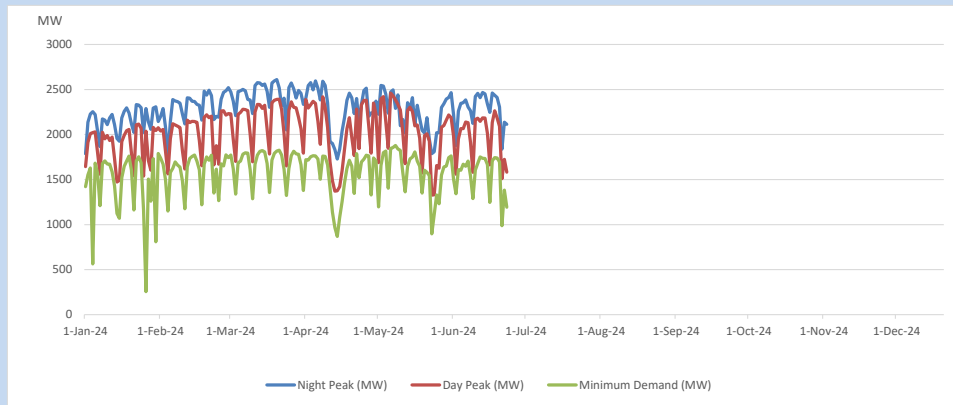


### 12. Variation of Major Hydro Reservoir Levels in the current year (GWh)





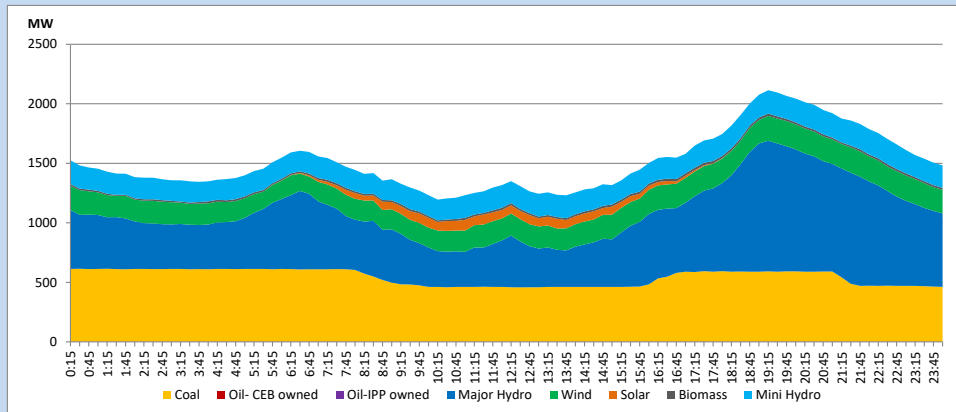
### 13. Variation of Demand during the current year



The above figures are excluding contribution from roof top solar, non telemetered solar and mini hydro plants

### 14. Daily Load Curve

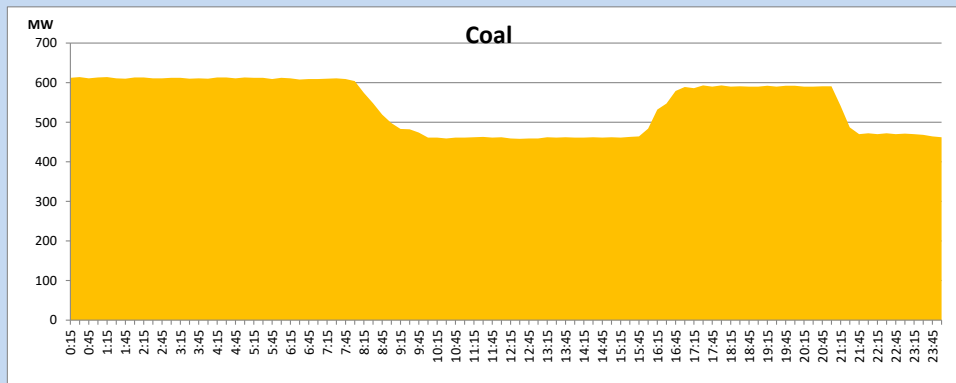
June 23, 2024



Solar and wind data is based on Telemetered Power Stations only

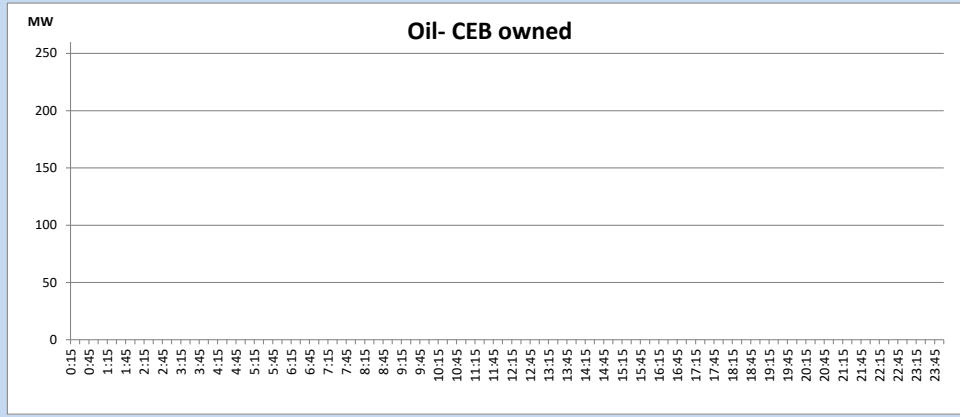
### Coal Generation during

June 23, 2024



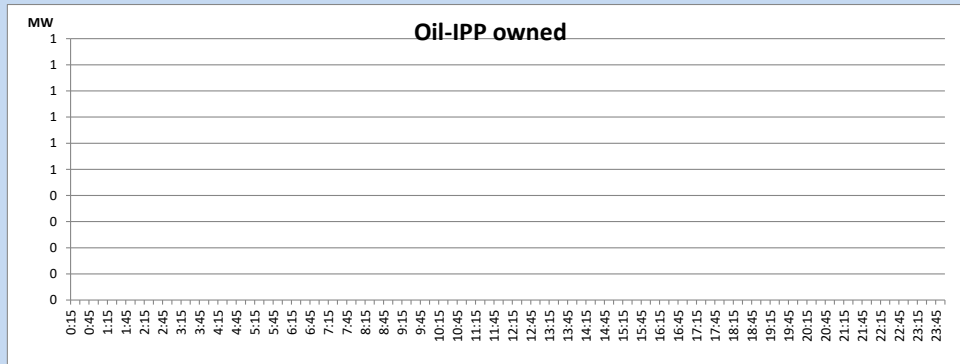
CEB Oil Plant Generation during

June 23, 2024



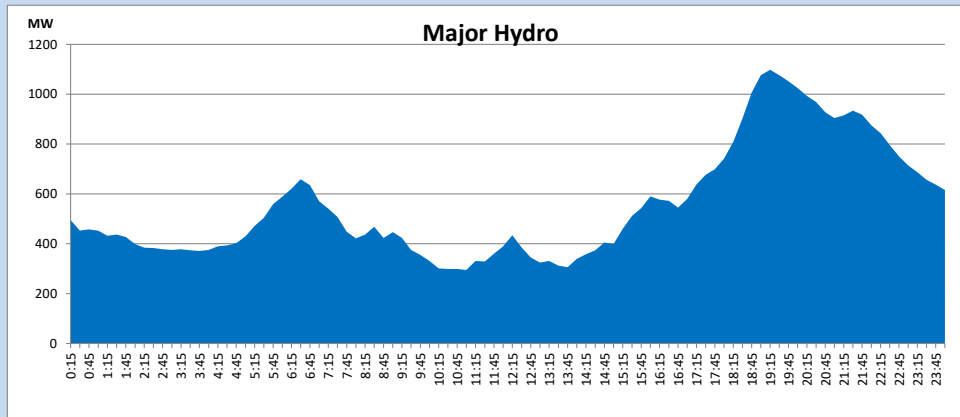
IPP Oil Plant Generation during

June 23, 2024



Major Hydro Generation during

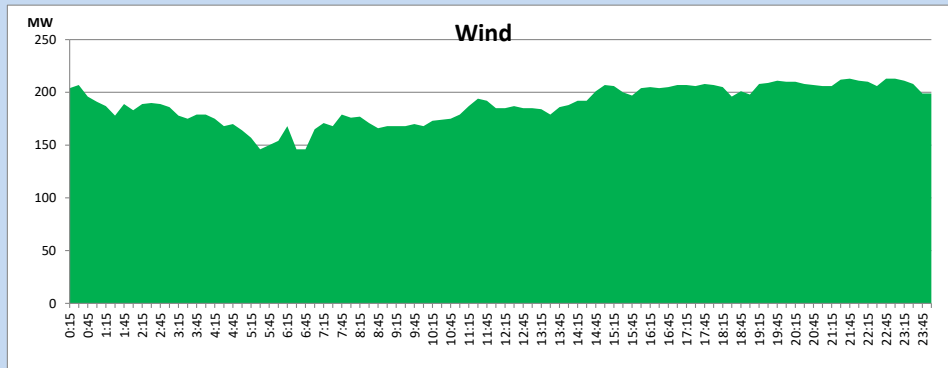
June 23, 2024



## Wind Generation during

June 23, 2024

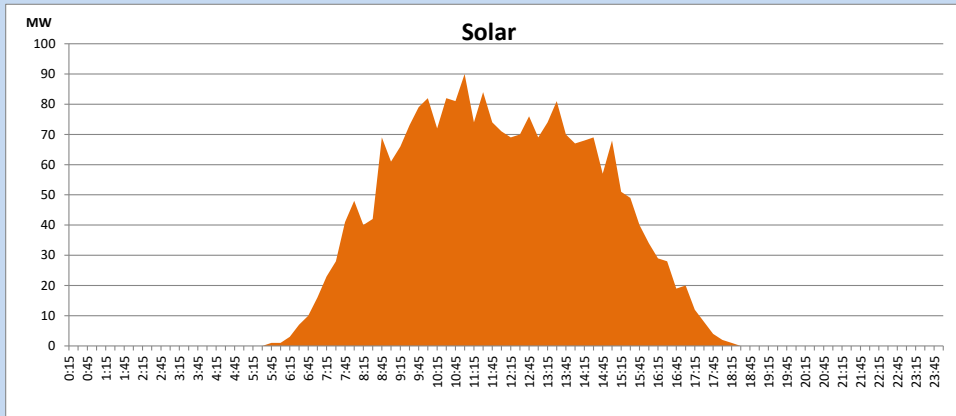
Based on Telemetered Power Stations only



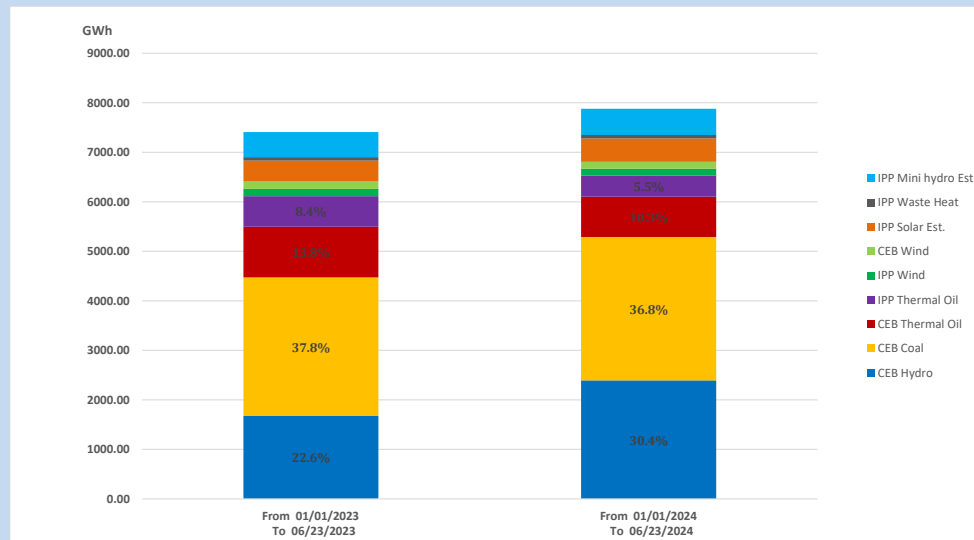
## Solar Generation during

June 23, 2024

Based on Telemetered Power Stations only



## 15. Cumulative Dispatch Comparison with Last Year



### Cumulative dispatch

From 01/01/2023 To 06/23/2023

7407 GWh

From 01/01/2024 To 06/23/2024

7879 GWh

The above figures are including contribution from roof top solar, non telemetered solar and mini hydro plants)

Unserviced energy due to power cuts has been excluded in 2023

Thermal Plant Fuel types

Table 08

Power Station	Primary Fuel
CEB Thermal	
Sapugaskanda 1	Heavy Fuel
Sapugaskanda 2	Heavy Fuel
Kelanitissa Small Gas Turbines	Auto Diesel
GT 7 - Kelanitissa	Auto Diesel
Kelanitissa CCY	Naphtha or Diesel
Lakvijaya 1	Coal
Lakvijaya 2	Coal
Lakvijaya 3	Coal
Uthuru Janani	Heavy Fuel
Barge CEB	Heavy Fuel
KCCPS -2	Auto Diesel

Power Station	Primary Fuel
Private Thermal	
West Coast	Auto Diesel / Heavy Fuel
Sobadhanavi	Auto Diesel

Major Incidents reported during the day

June 23, 2024

1) Puttalam GSS 132/33kV T/F 03, 33kV Bus section CB and 132/33kV T/F 01 which tripped at 00:47hrs, were normalized at 08:47hrs, 09:54hrs and 14:10hrs respectively. Puttalam GSS 33kV feeder 02, 04, 07, and wind feeder were normalized by 10:03 hrs and feeder 01 and 03 were normalized at 11:54hrs.

2) New Anuradhapura GSS 220/132/33kV T/F 01 tripped only from 220kV end at 07:31hrs. the T/F was normalized at 14:57hrs.