

Generation and Reservoirs Statistics

July 15, 2024



PUBLIC UTILITIES COMMISSION OF SRI LANKA

1. Daily Generation Mix in MWh

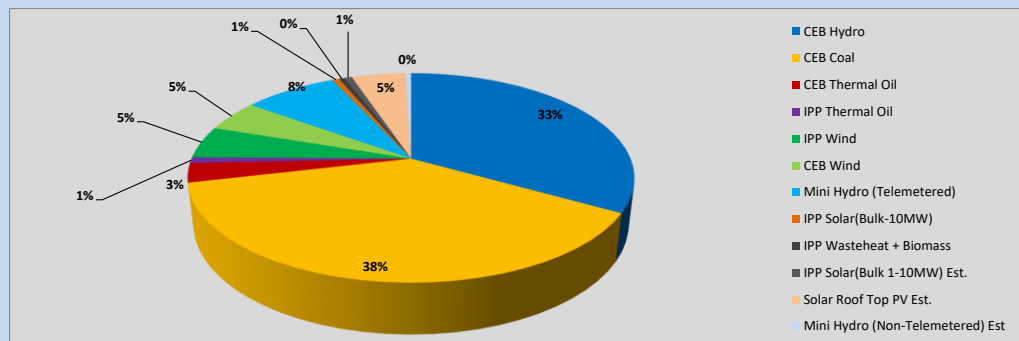


Table 01

	Generation (MWh)
CEB Hydro	15,420
CEB Coal	17,753
CEB Thermal Oil	1,382
IPP Thermal Oil	423
IPP Wind	2,294
CEB Wind	2,245
Mini Hydro (Telemetered)	3,786
IPP Solar (Bulk)	268
IPP Waste heat + Biomass	230
Total Generation (Excluding estimated figures)	43,801
* Estimated unserved energy	0
* Estimated Mini Hydro (Non telemetered)	228
* Estimated IPP Solar PV (Bulk 1-10MW)	304
* Estimated Solar Roof Top PV	2170
Total Generation (Including estimated figures)	46,503

* Estimated figures of CEB generation report

Table 02

	Installed Capacity (MW)
CEB Hydro	1533
CEB Coal	810
CEB Thermal Oil	773.1
IPP Thermal Oil (West Coast)	490
IPP Wind	163
CEB Wind	100
Mini Hydro	422
IPP Waste heat + Biomass	54
IPP Solar	137
Rooftop Solar (Ordinary)	326
Rooftop Solar (LT Bulk)	285
Rooftop Solar (HT Bulk)	79

Data Source - Monthly Review Report [Jan-2024]

2. Cumulative Dispatch

Following data excludes the contribution from roof top solar, non telemetered solar and mini hydro plants

Table 03 - Current Month

Category	Dispatch (GWh)	
CEB Hydro	236	34.17%
CEB Coal	217	31.41%
CEB Thermal Oil	60	8.66%
IPP Thermal	18	2.63%
SPP Wind	28	4.02%
CEB Wind	28	4.05%
Mini Hydro *	56	8.05%
IPP Solar *	43	6.29%
IPP Waste heat + BMP	5	0.72%
Total	690	

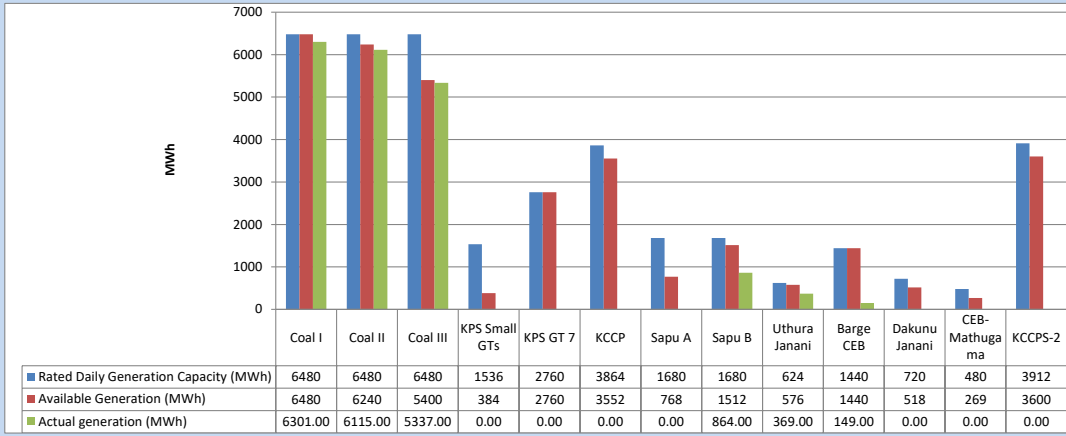
Table 04 - Current Year

Category	Dispatch (GWh)	
CEB Hydro	2,743	30.85%
CEB Coal	3,221	36.22%
CEB Thermal Oil	876	9.85%
IPP Thermal	452	5.08%
SPP Wind	180	2.02%
CEB Wind	184	2.07%
Mini Hydro *	605	6.80%
IPP Solar *	550	6.18%
IPP Waste heat	82	0.93%
Total	8,894	

*Including estimated contribution from non telemetered plants

3. CEB owned Thermal Plant Dispatch

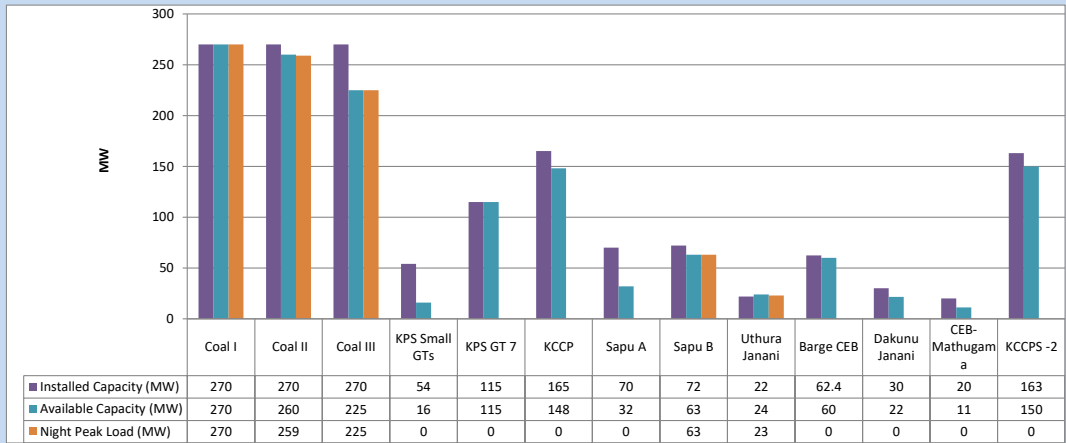
July 15, 2024



Available Generation is estimated based on plant availability at 6.00am on

July 16, 2024

4. CEB owned Thermal Plant Loading at the Night Peak

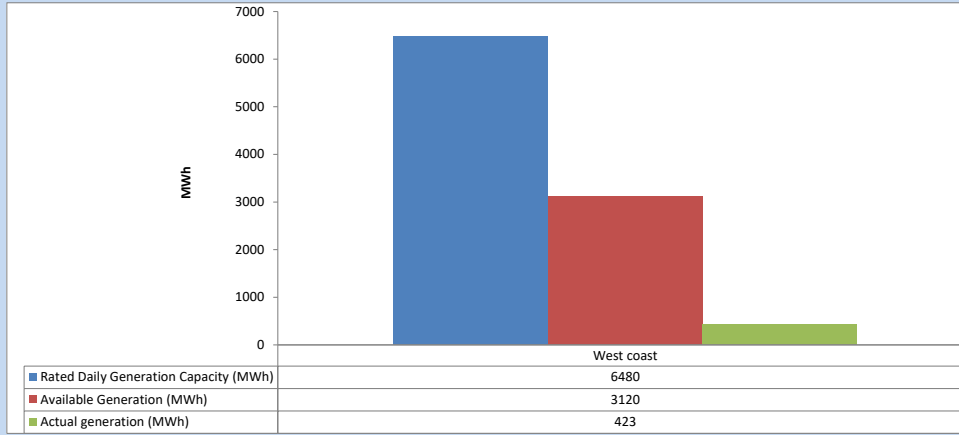


Plant availability is recorded at 6.00 am on

July 16, 2024

5. IPP owned Thermal Plant Dispatch

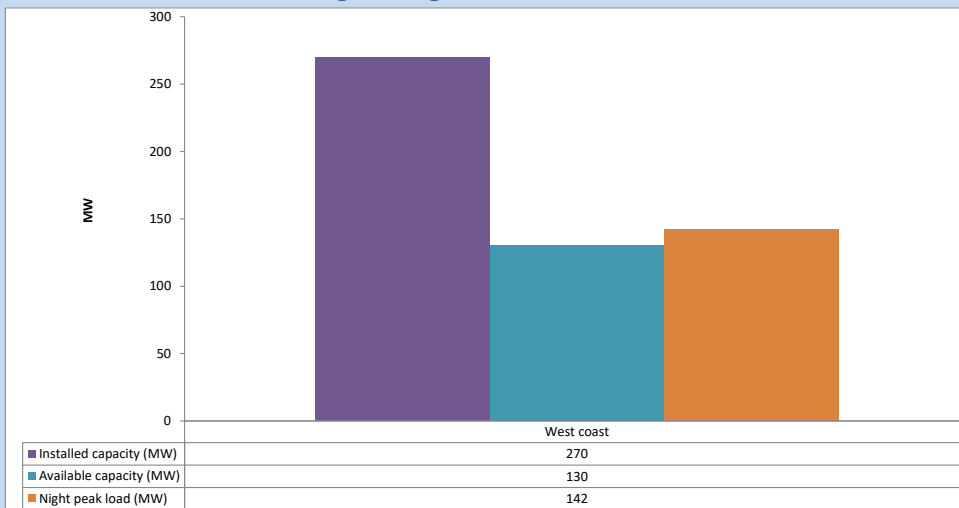
July 15, 2024



Available Generation is estimated based on plant availability at 6.00am on

July 16, 2024

6. IPP owned Thermal Plant Loading at the Night Peak

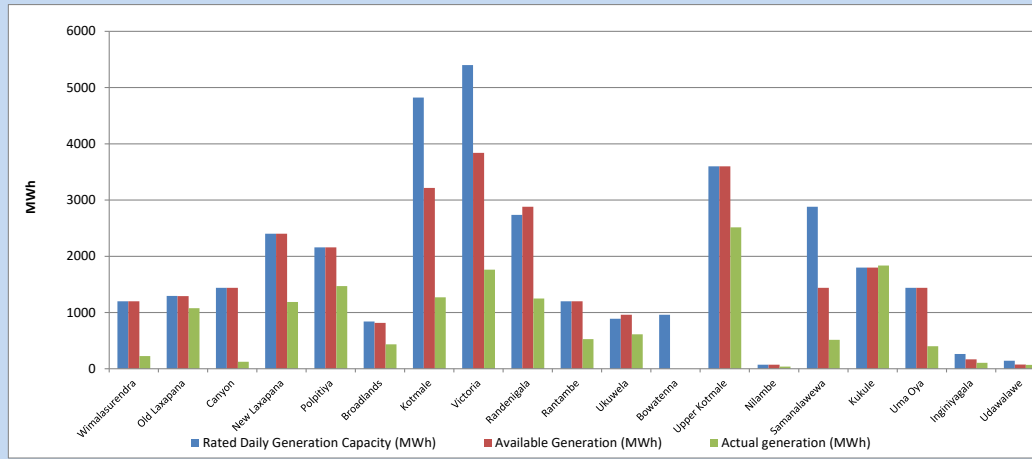


Plant availability is recorded at 6.00 am on

July 16, 2024

7. Major Hydro Plant Dispatch

July 15, 2024

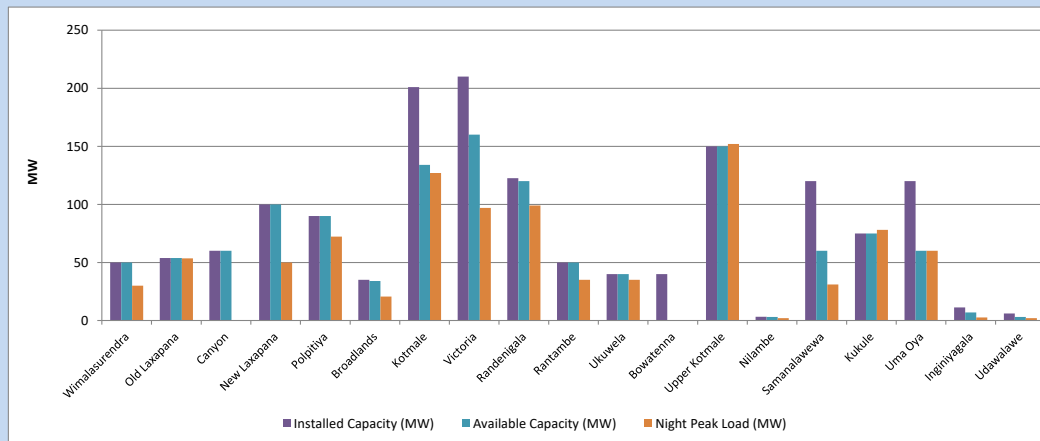


Available Generation is estimated based on plant availability at 6.00am on
Broadlands power plant is operating in the Commissioning Stage

July 16, 2024

8. Major Hydro Plant Loading at Night Peak

July 15, 2024



Plant availability is recorded at 6.00 am on
Broadlands power plant is operating in the Commissioning Stage

July 16, 2024

9. Summary of Major Plant performance

Table 05

Plant	Maximum Available Total Capacity	Plant Availability	Night peak Load	Plant Dispatch
	(MW)	(MW)	(MW)	(MWh)
Wimalasurendra	50	50	30	226
Old Laxapana	54	54	54	1,076
Canyon	60	60	0	123
New Laxapana	100	100	50	1,189
Polpitiya	90	90	72	1,470
Broadlands	35	34	21	434
Kotmale	201	134	127	1,270
Victoria	210	160	97	1,762
Randenigala	123	120	99	1,249
Rantambe	50	50	35	527
Ukuwela	40	40	35	612
Bowatenna	40	0	0	0
Upper Kotmale	150	150	152	2,516
Nilambe	3	3	2	39
Samanalawewa	120	60	31	515
Kukule	75	75	78	1,836
Uma Oya (Testing)	120	60	60	400
Inginiyagala	11	7	3	107
Udawalawe	6	3	2	69
Puttalam Coal I	270	270	270	6,301
Puttalam Coal II	270	260	259	6,115
Puttalam Coal III	270	225	225	5,337
KPS Small GTs	54	16	0	0
KPS GT 7	115	115	0	0
KCCP	165	148	0	0
Sapugaskanda A	70	32	0	0
Sapugaskanda B	72	63	63	864
Uthura Janani	22	24	23	369
Barge CEB	62	60	0	149
CEB-Hambantota	30	22	0	0
CEB-Mathugama	20	11	0	0
ACE Matara	24	0	0	0
Asia Power	50	0	0	0
KCCPS -2	163	150	0	0
West Coast	270	130	142	423
Nothern Power	36	0	0	0
ACE Embilipitiya	93	0	0	0
Sobadhanavi	220	0	0	0
Total	3,594	2,776	2,312	43,801

Note-

Plant availability is the availability recorded at 6 am on
Installed Capacity is sourced from CEB Annual Report- 2022

July 16, 2024

10. Contribution to the Night Peak in MW

July 15, 2024

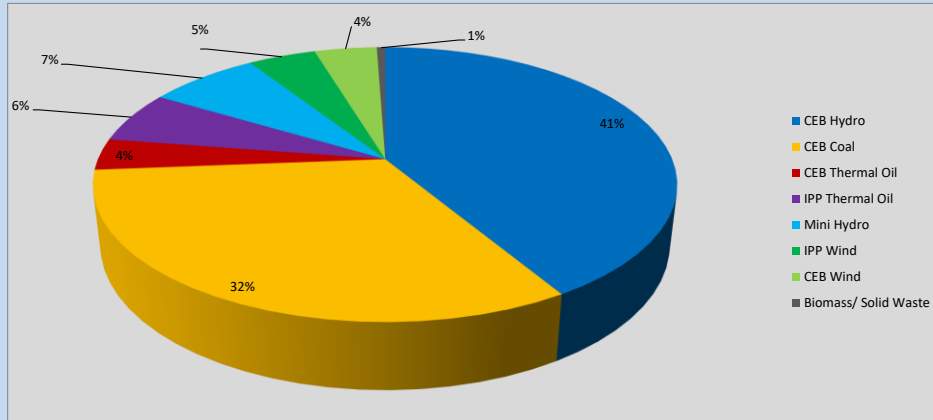


Table 06

CEB Hydro	963	MW
CEB Coal	754	MW
CEB Thermal Oil	86	MW
IPP Thermal Oil	142	MW
Mini Hydro (Telemetered)	170	MW
IPP Wind	104.2	MW
CEB Wind	96.1	MW
Biomass/ Solid Waste	13	MW

Recorded Peak Demand Data

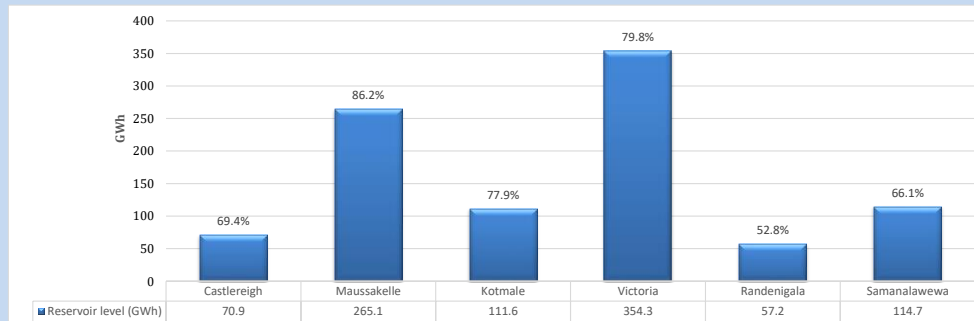
Table 07

Night Peak*	2,328	MW
Day Peak Maximum Demand	2,089	MW
Day Peak Minimum Demand	1,652	MW
Off Peak Minimum Demand	1,321	MW

Above figures are excluding contribution from roof top solar, non telemetered solar and mini hydro plants

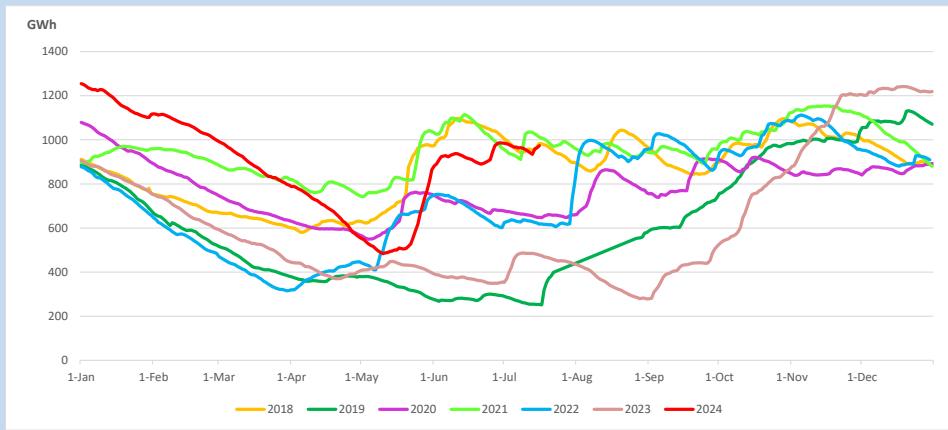
Reservoir Levels -

as at 06.00 Hr on July 16, 2024

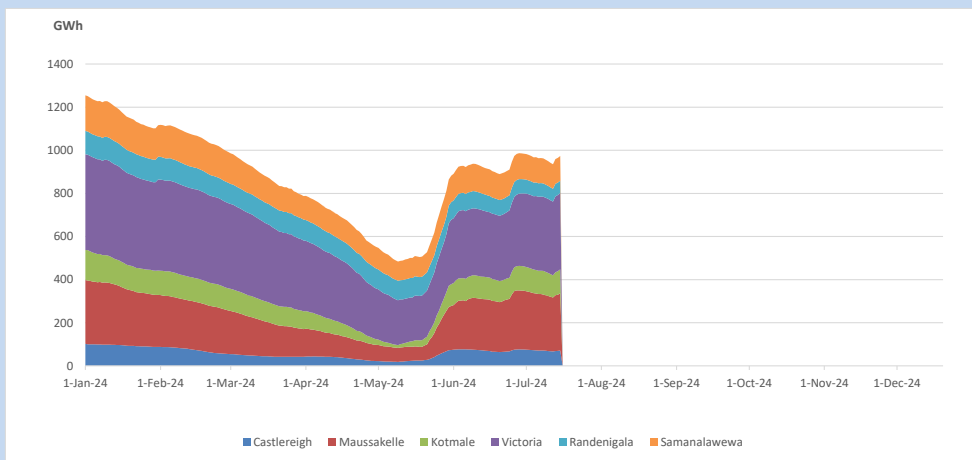


Total Reservoir Level 973.8 GWh
% of Total capacity 76.1%

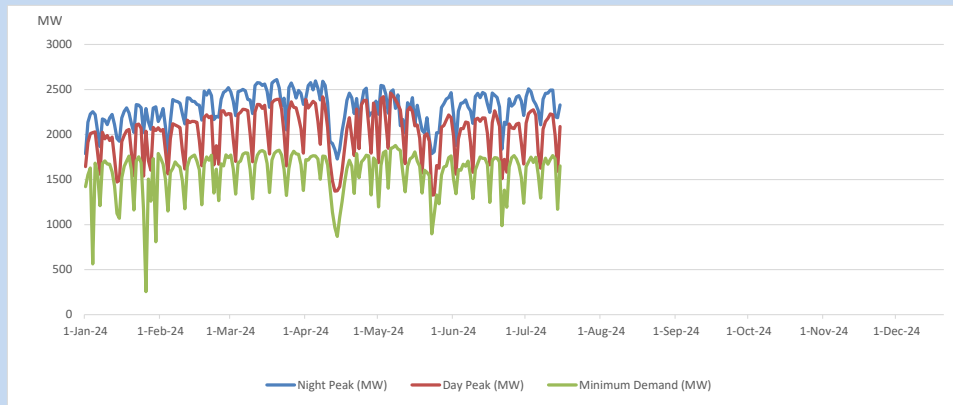
11. Comparison of Total Reservoir Storage Levels with Past Years



12. Variation of Major Hydro Reservoir Levels in the current year (GWh)



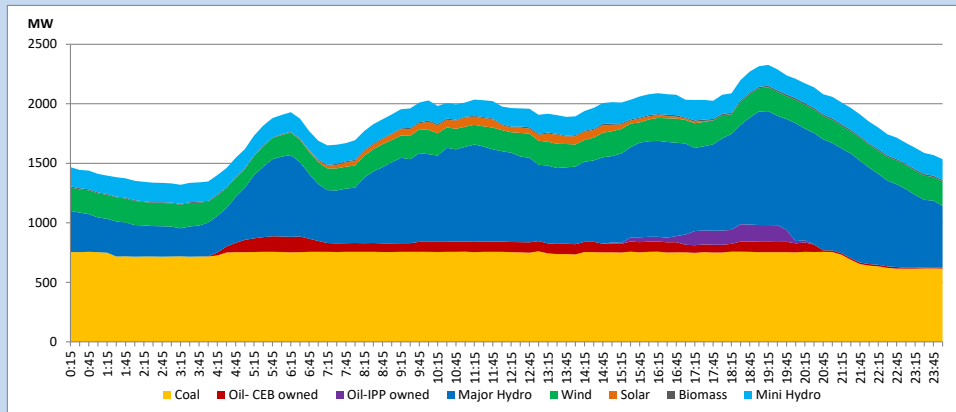
13. Variation of Demand during the current year



The above figures are excluding contribution from roof top solar, non telemetered solar and mini hydro plants

14. Daily Load Curve

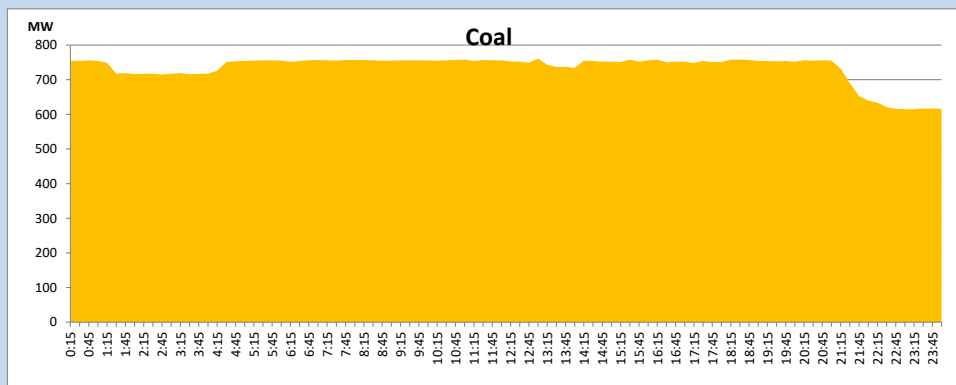
July 15, 2024



Solar and wind data is based on Telemetered Power Stations only

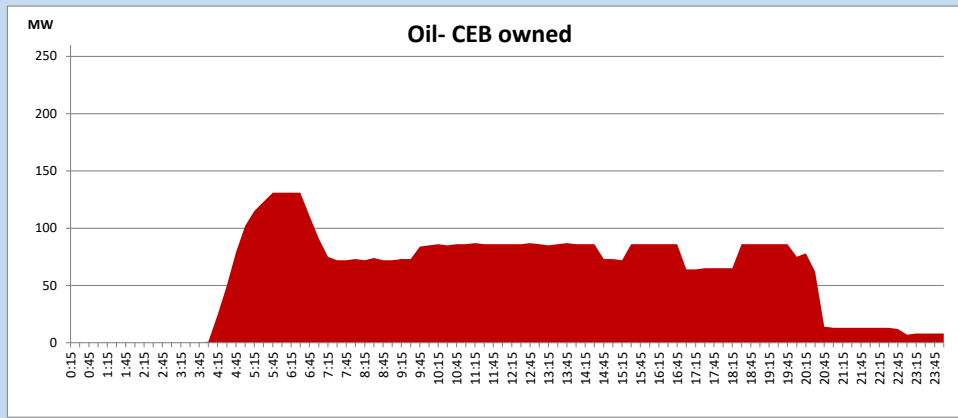
Coal Generation during

July 15, 2024



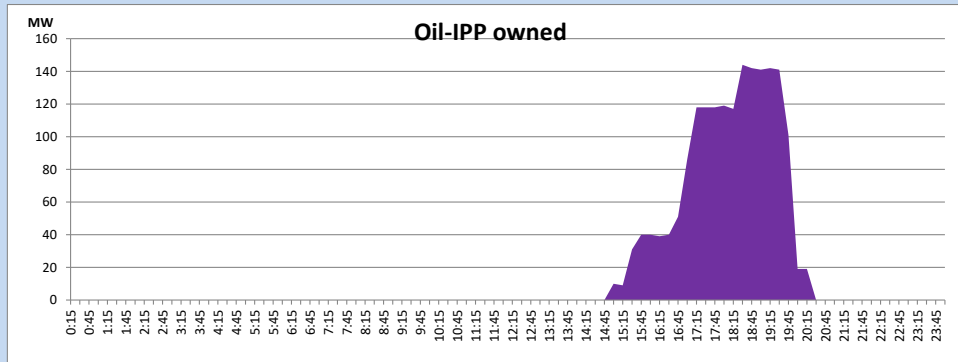
CEB Oil Plant Generation during

July 15, 2024



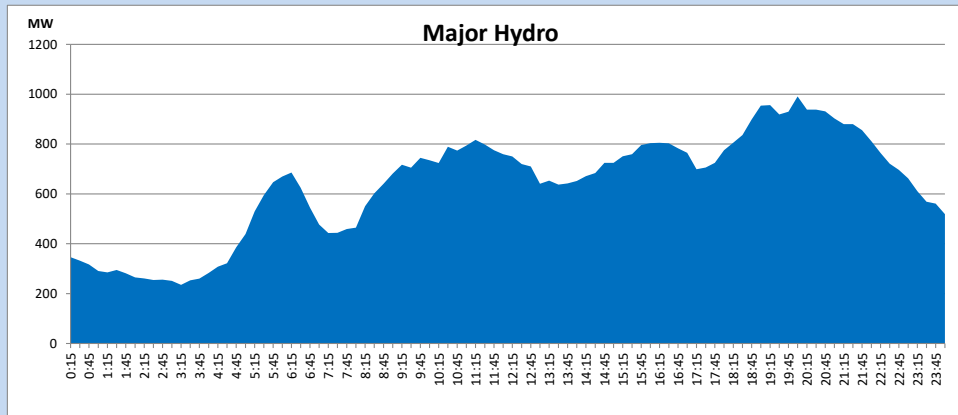
IPP Oil Plant Generation during

July 15, 2024



Major Hydro Generation during

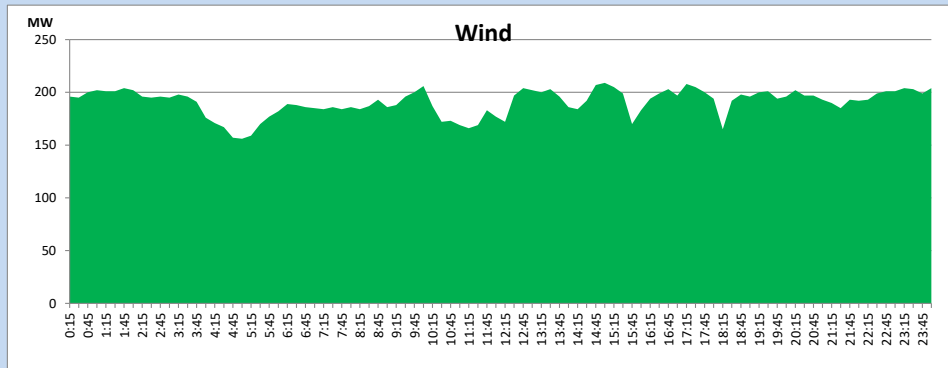
July 15, 2024



Wind Generation during

July 15, 2024

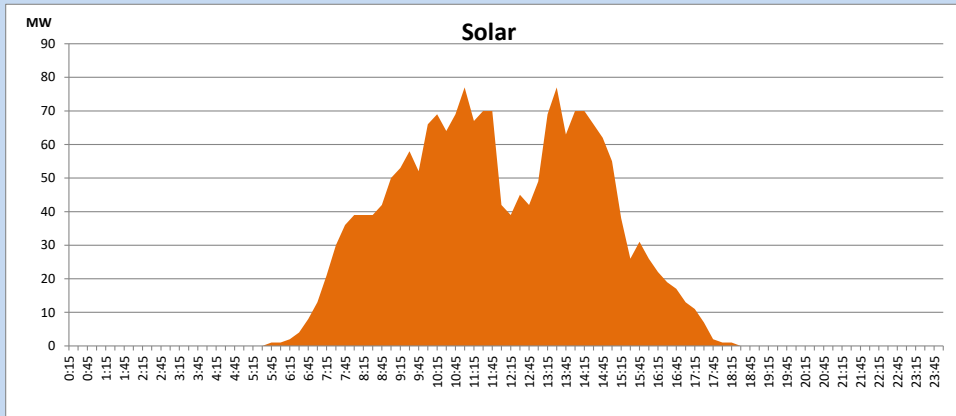
Based on Telemetered Power Stations only



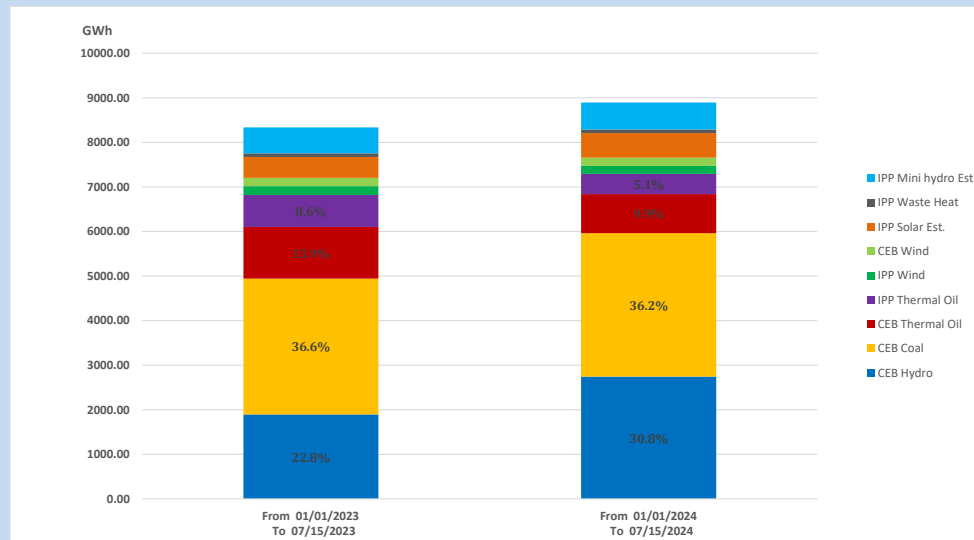
Solar Generation during

July 15, 2024

Based on Telemetered Power Stations only



15. Cumulative Dispatch Comparison with Last Year



Cumulative dispatch
 From 01/01/2023 To 07/15/2023
 From 01/01/2024 To 07/15/2024

8335 GWh
 8894 GWh

The above figures are including contribution from roof top solar, non telemetered solar and mini hydro plants)
 Unused energy due to power cuts has been excluded in 2023

Thermal Plant Fuel types

Table 08

Power Station	Primary Fuel
CEB Thermal	
Sapugaskanda 1	Heavy Fuel
Sapugaskanda 2	Heavy Fuel
Kelanitissa Small Gas Turbines	Auto Diesel
GT 7 - Kelanitissa	Auto Diesel
Kelanitissa CCY	Naphtha or Diesel
Lakvijaya 1	Coal
Lakvijaya 2	Coal
Lakvijaya 3	Coal
Uthuru Janani	Heavy Fuel
Barge CEB	Heavy Fuel
KCCPS -2	Auto Diesel

Power Station	Primary Fuel
Private Thermal	
West Coast	Auto Diesel / Heavy Fuel
Sobadhanavi	Auto Diesel

Major Incidents reported during the day

July 15, 2024

- 1) Thulhiriya 132/33kV T/F 02 tripped from both ends at 9:35hrs due to the operation of Differential protection. Thulhiriya T/F 02 normalized at 10:18hrs.
- 2) LVPS unit 03 de-loaded to 200MW (net) at 13:40hrs, due to a coal feeder issue. LVPS unit 03 reached maximum load, 225MW (net) at 14:10hrs.
- 3) Embilipitiya - Matara 132kV cct tripped and A/R from both ends at 00:56hrs (16/07/2024) due to the operation of Distance protection.