

Generation and Reservoirs Statistics

July 13, 2024



PUBLIC UTILITIES COMMISSION OF SRI LANKA

1. Daily Generation Mix in MWh

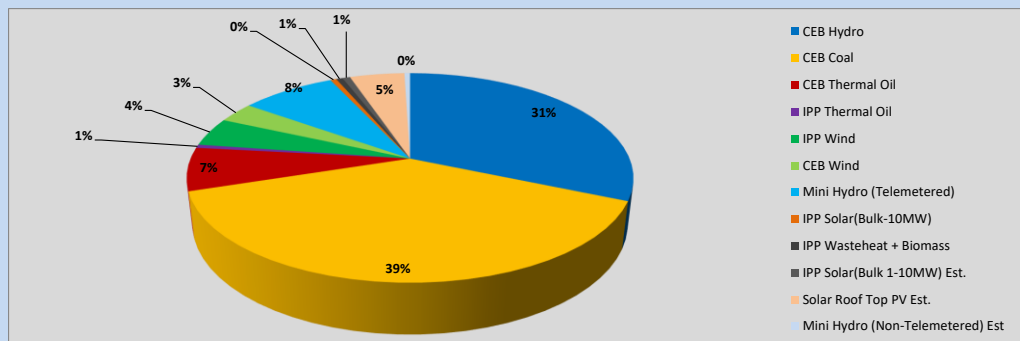


Table 01

	Generation (MWh)
CEB Hydro	14,391
CEB Coal	17,735
CEB Thermal Oil	3,056
IPP Thermal Oil	242
IPP Wind	2,028
CEB Wind	1,456
Mini Hydro (Telemetered)	3,749
IPP Solar (Bulk)	241
IPP Waste heat + Biomass	256
Total Generation (Excluding estimated figures)	43,154
* Estimated unserved energy	0
* Estimated Mini Hydro (Non telemetered)	226
* Estimated IPP Solar PV (Bulk 1-10MW)	304
* Estimated Solar Roof Top PV	2170
Total Generation (Including estimated figures)	45,854

* Estimated figures of CEB generation report

Table 02

	Installed Capacity (MW)
CEB Hydro	1533
CEB Coal	810
CEB Thermal Oil	773.1
IPP Thermal Oil (West Coast)	490
IPP Wind	163
CEB Wind	100
Mini Hydro	422
IPP Waste heat + Biomass	54
IPP Solar	137
Rooftop Solar (Ordinary)	326
Rooftop Solar (LT Bulk)	285
Rooftop Solar (HT Bulk)	79

Data Source - Monthly Review Report [Jan-2024]

2. Cumulative Dispatch

Following data excludes the contribution from roof top solar, non telemetered solar and mini hydro plants

Table 03 - Current Month

Category	Dispatch (GWh)	
CEB Hydro	208	34.33%
CEB Coal	185	30.48%
CEB Thermal Oil	58	9.65%
IPP Thermal	18	2.93%
SPP Wind	23	3.88%
CEB Wind	24	4.00%
Mini Hydro *	47	7.75%
IPP Solar *	38	6.25%
IPP Waste heat + BMP	4	0.74%
Total	605	

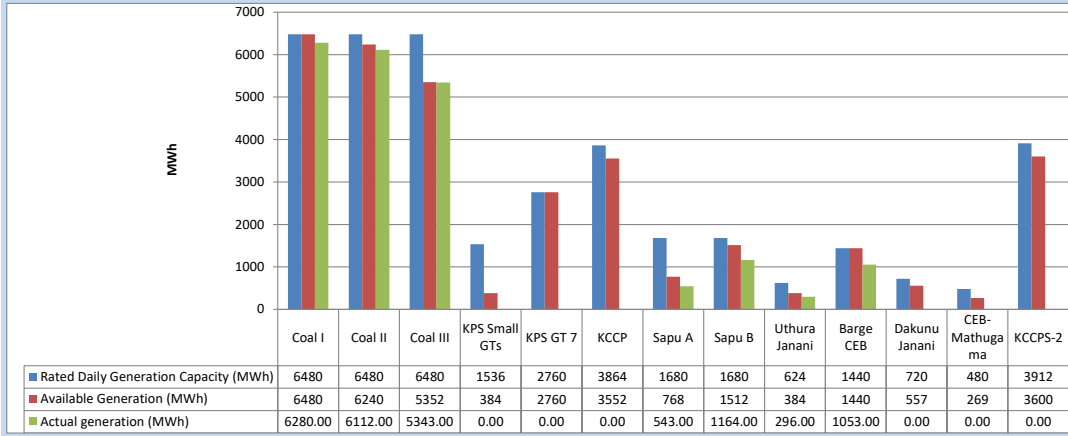
Table 04 - Current Year

Category	Dispatch (GWh)	
CEB Hydro	2,715	30.83%
CEB Coal	3,189	36.20%
CEB Thermal Oil	875	9.93%
IPP Thermal	451	5.12%
SPP Wind	176	1.99%
CEB Wind	180	2.05%
Mini Hydro *	596	6.77%
IPP Solar *	544	6.18%
IPP Waste heat	82	0.93%
Total	8,809	

*Including estimated contribution from non telemetered plants

3. CEB owned Thermal Plant Dispatch

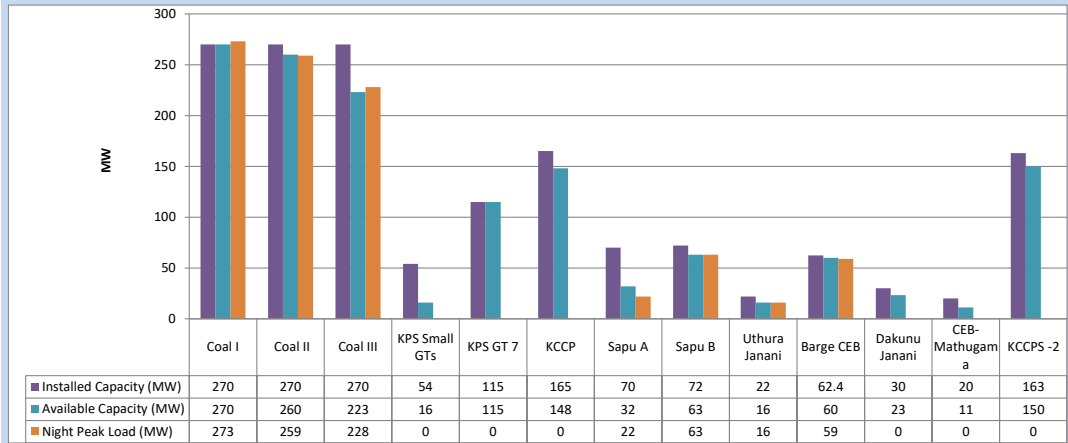
July 13, 2024



Available Generation is estimated based on plant availability at 6.00am on

July 14, 2024

4. CEB owned Thermal Plant Loading at the Night Peak

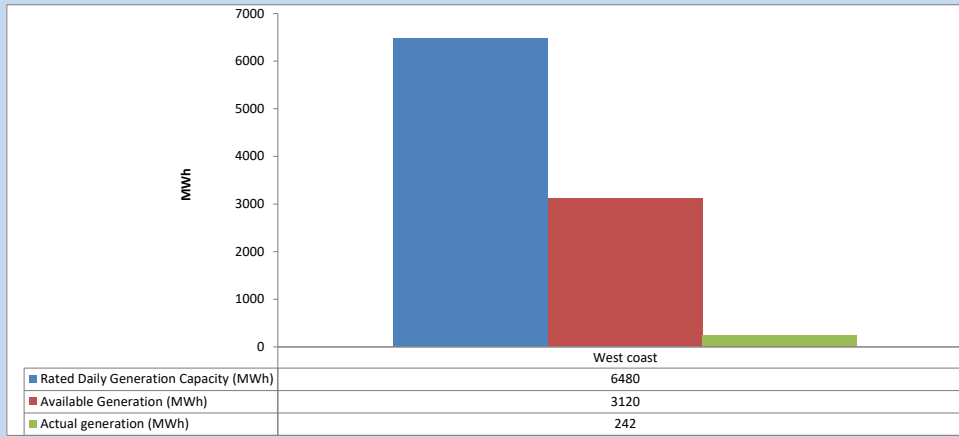


Plant availability is recorded at 6.00 am on

July 14, 2024

5. IPP owned Thermal Plant Dispatch

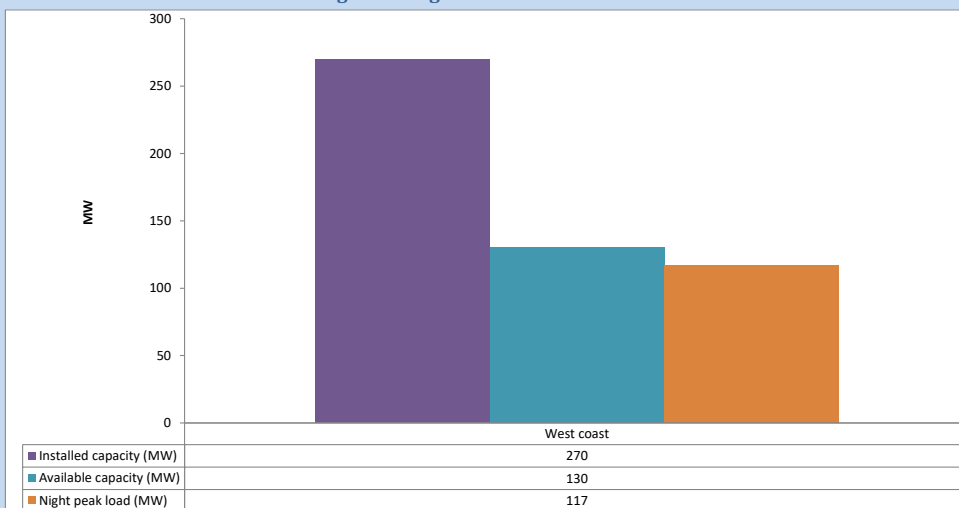
July 13, 2024



Available Generation is estimated based on plant availability at 6.00am on

July 14, 2024

6. IPP owned Thermal Plant Loading at the Night Peak

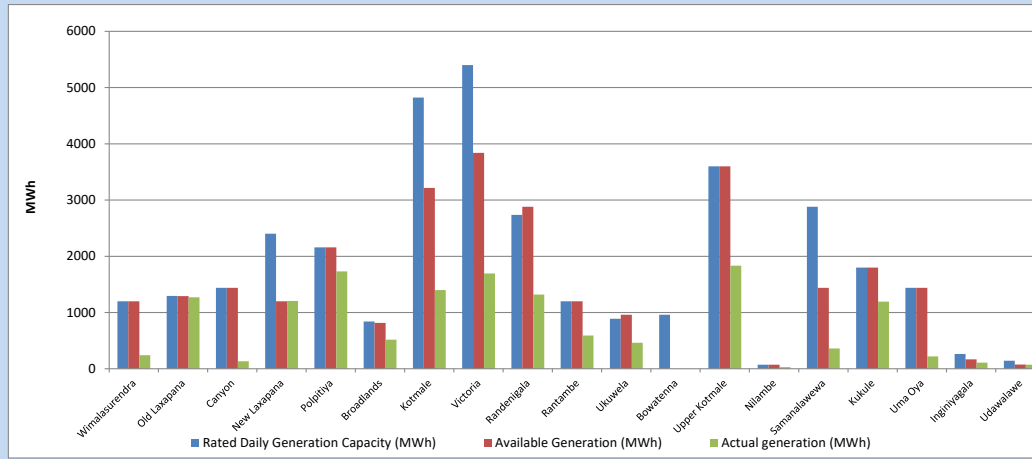


Plant availability is recorded at 6.00 am on

July 14, 2024

7. Major Hydro Plant Dispatch

July 13, 2024

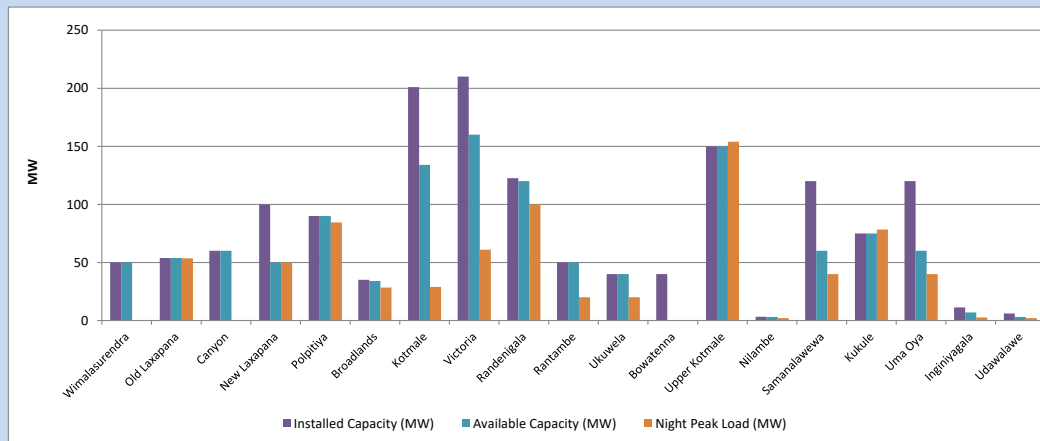


Available Generation is estimated based on plant availability at 6.00am on
Broadlands power plant is operating in the Commissioning Stage

July 14, 2024

8. Major Hydro Plant Loading at Night Peak

July 13, 2024



Plant availability is recorded at 6.00 am on
Broadlands power plant is operating in the Commissioning Stage

July 14, 2024

9. Summary of Major Plant performance

Table 05

Plant	Maximum Available Total Capacity	Plant Availability	Night peak Load	Plant Dispatch
	(MW)	(MW)	(MW)	(MWh)
Wimalasurendra	50	50	0	242
Old Laxapana	54	54	54	1,271
Canyon	60	60	0	133
New Laxapana	100	50	50	1,207
Polpitiya	90	90	84	1,730
Broadlands	35	34	28	518
Kotmale	201	134	29	1,400
Victoria	210	160	61	1,696
Randenigala	123	120	100	1,320
Rantambe	50	50	20	592
Ukuwela	40	40	20	463
Bowatenna	40	0	0	0
Upper Kotmale	150	150	154	1,832
Nilambe	3	3	2	30
Samanalawewa	120	60	40	360
Kukule	75	75	78	1,195
Uma Oya (Testing)	120	60	40	221
Inginiyagala	11	7	3	109
Udawalawe	6	3	2	73
Puttalam Coal I	270	270	273	6,280
Puttalam Coal II	270	260	259	6,112
Puttalam Coal III	270	223	228	5,343
KPS Small GTs	54	16	0	0
KPS GT 7	115	115	0	0
KCCP	165	148	0	0
Sapugaskanda A	70	32	22	543
Sapugaskanda B	72	63	63	1,164
Uthura Janani	22	16	16	296
Barge CEB	62	60	59	1,053
CEB-Hambantota	30	23	0	0
CEB-Mathugama	20	11	0	0
ACE Matara	24	0	0	0
Asia Power	50	0	0	0
KCCPS -2	163	150	0	0
West Coast	270	130	117	242
Nothern Power	36	0	0	0
ACE Embilipitiya	93	0	0	0
Sobadhanavi	220	0	0	0
Total	3,594	2,717	2,168	43,155

Note-

Plant availability is the availability recorded at 6 am on
Installed Capacity is sourced from CEB Annual Report- 2022

July 14, 2024

10. Contribution to the Night Peak in MW

July 13, 2024

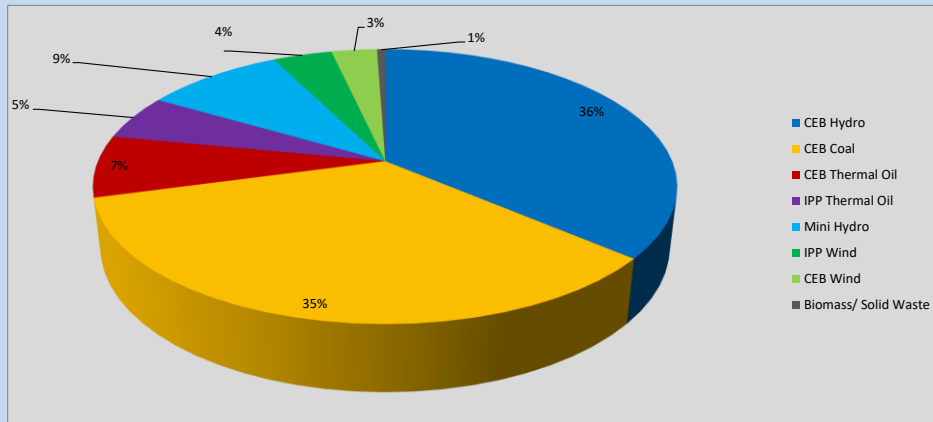


Table 06

CEB Hydro	796	MW
CEB Coal	760	MW
CEB Thermal Oil	160	MW
IPP Thermal Oil	117	MW
Mini Hydro (Telemetered)	201	MW
IPP Wind	86.3	MW
CEB Wind	66.2	MW
Biomass/ Solid Waste	12	MW

Recorded Peak Demand Data

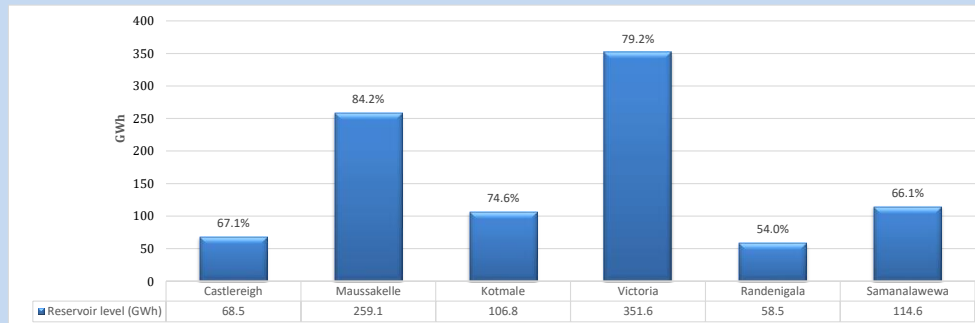
Table 07

Night Peak*	2,198	MW
Day Peak Maximum Demand	1,987	MW
Day Peak Minimum Demand	1,731	MW
Off Peak Minimum Demand	1,505	MW

Above figures are excluding contribution from roof top solar, non telemetered solar and mini hydro plants

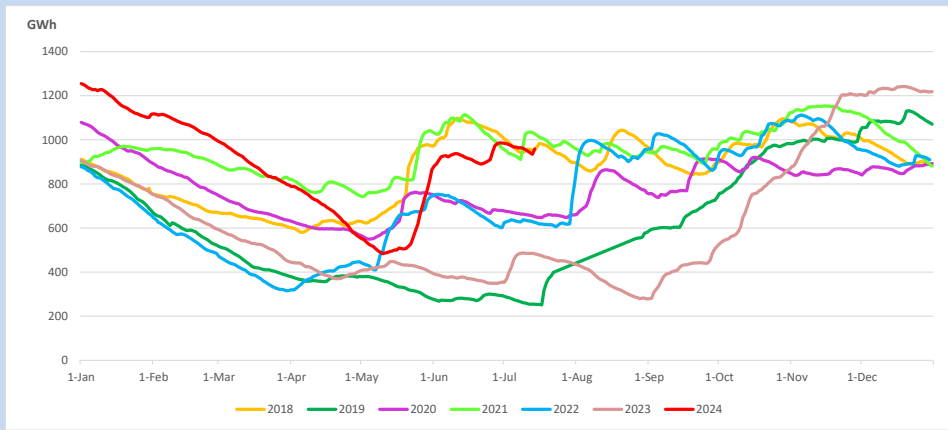
Reservoir Levels -

as at 06.00 Hr on July 14, 2024

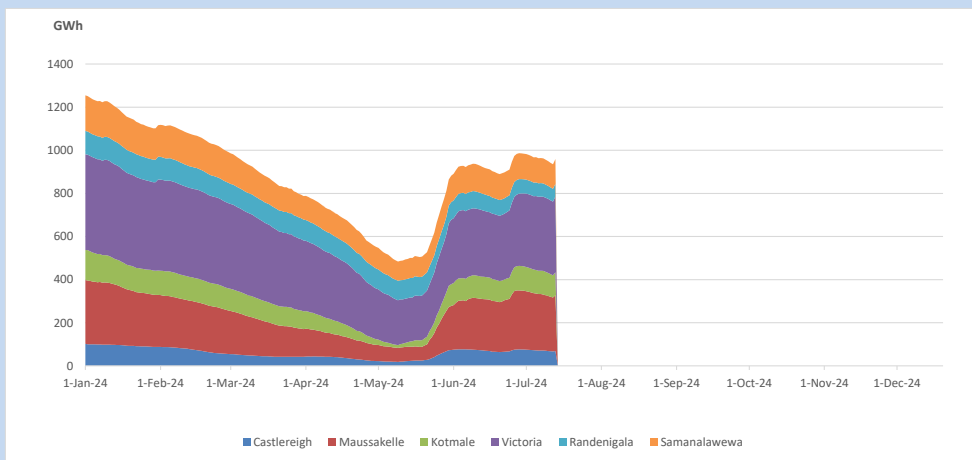


Total Reservoir Level 959.1 GWh
 % of Total capacity 75.0%

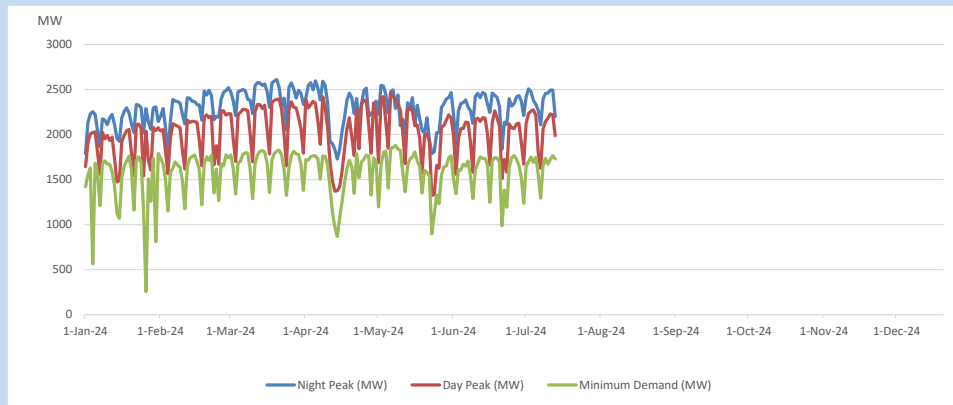
11. Comparison of Total Reservoir Storage Levels with Past Years



12. Variation of Major Hydro Reservoir Levels in the current year (GWh)



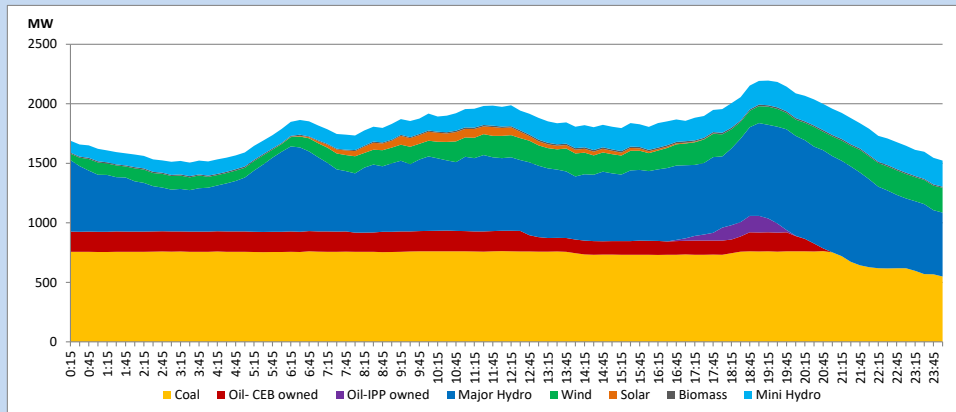
13. Variation of Demand during the current year



The above figures are excluding contribution from roof top solar, non telemetered solar and mini hydro plants

14. Daily Load Curve

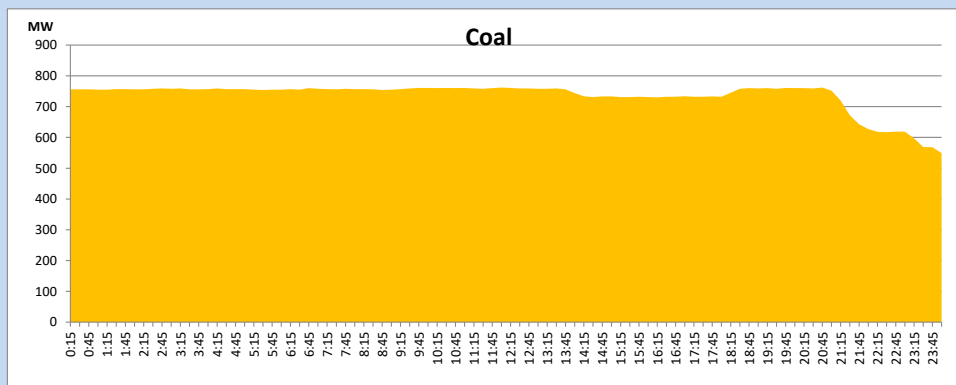
July 13, 2024



Solar and wind data is based on Telemetered Power Stations only

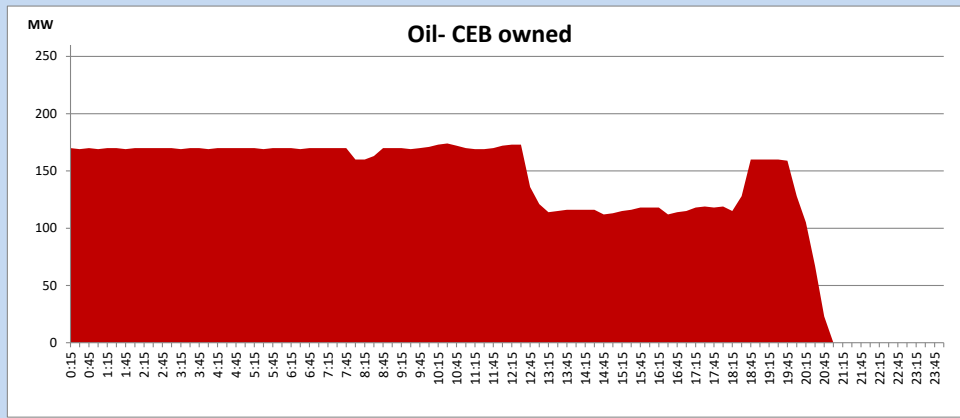
Coal Generation during

July 13, 2024



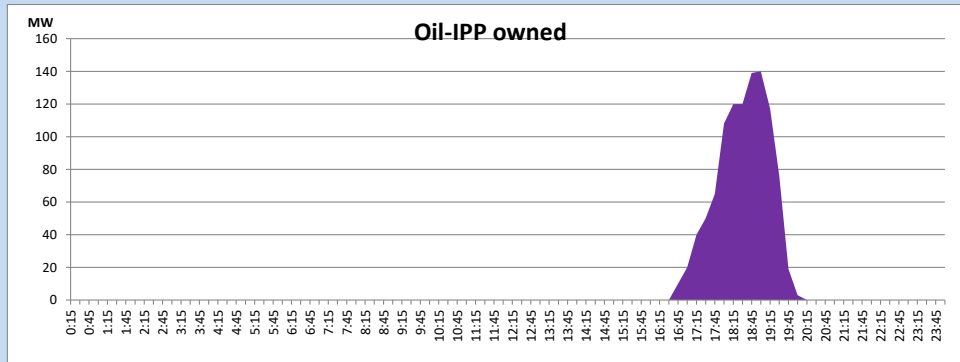
CEB Oil Plant Generation during

July 13, 2024



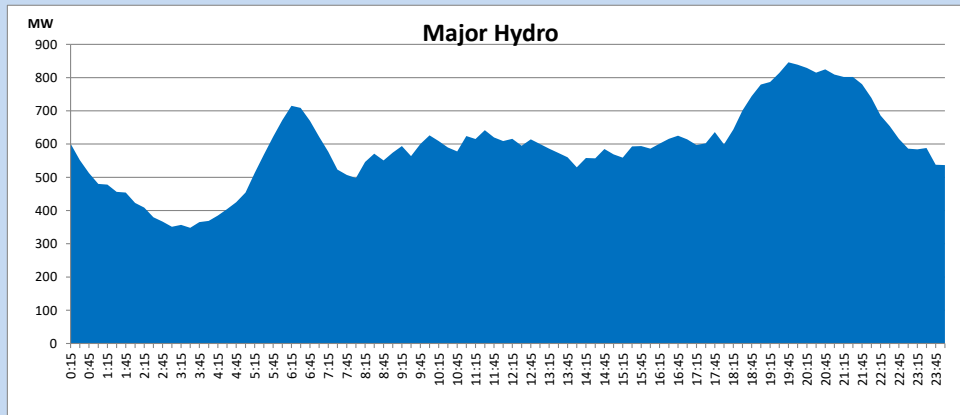
IPP Oil Plant Generation during

July 13, 2024



Major Hydro Generation during

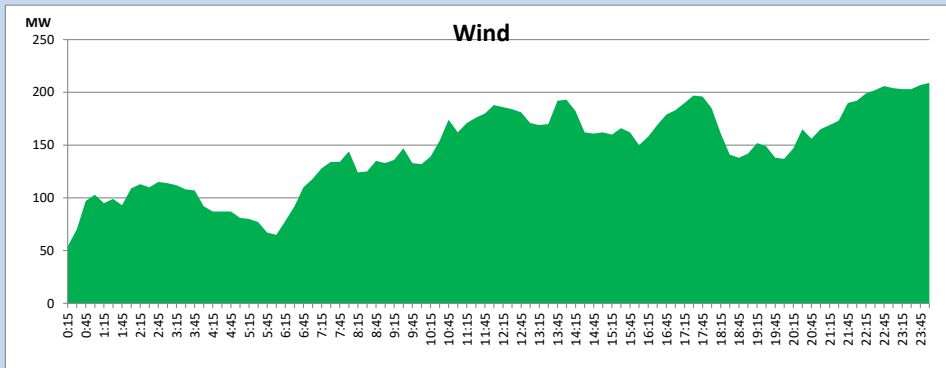
July 13, 2024



Wind Generation during

July 13, 2024

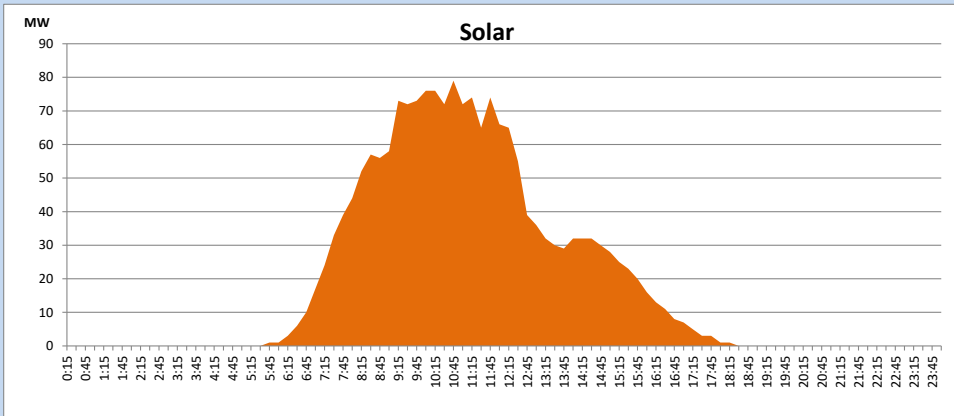
Based on Telemetered Power Stations only



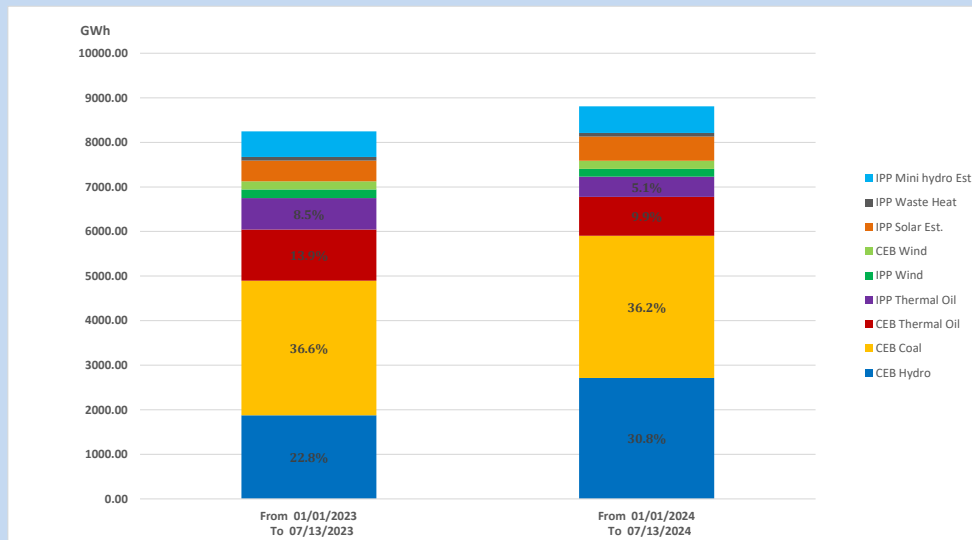
Solar Generation during

July 13, 2024

Based on Telemetered Power Stations only



15. Cumulative Dispatch Comparison with Last Year



Cumulative dispatch
 From 01/01/2023 To 07/13/2023
 From 01/01/2024 To 07/13/2024

8246 GWh
 8809 GWh

The above figures are including contribution from roof top solar, non telemetered solar and mini hydro plants)
 Unused energy due to power cuts has been excluded in 2023

Thermal Plant Fuel types

Table 08

Power Station	Primary Fuel
CEB Thermal	
Sapugaskanda 1	Heavy Fuel
Sapugaskanda 2	Heavy Fuel
Kelanitissa Small Gas Turbines	Auto Diesel
GT 7 - Kelanitissa	Auto Diesel
Kelanitissa CCY	Naphtha or Diesel
Lakvijaya 1	Coal
Lakvijaya 2	Coal
Lakvijaya 3	Coal
Uthuru Janani	Heavy Fuel
Barge CEB	Heavy Fuel
KCCPS -2	Auto Diesel

Power Station	Primary Fuel
Private Thermal	
West Coast	Auto Diesel / Heavy Fuel
Sobadhanavi	Auto Diesel

Major Incidents reported during the day

July 13, 2024

- 1) Laxapana pond, Canyon pond and Norton pond spilling started at 12:49hrs, 13:49hrs and 15:05hrs respectively. Norton pond, Canyon pond and Laxapana pond spilling stopped at 18:50hrs, 20:05hrs and 21:45hrs respectively.
- 2) Kelanitissa 220/132kV T/F 01 which tripped on 02.09.2023, was normalized at 19:05hrs.
- 3) Kukule spilling started at 21:08hrs and continues to the present hour.