

Generation and Reservoirs Statistics

July 8, 2024



PUBLIC UTILITIES COMMISSION OF SRI LANKA

1. Daily Generation Mix in MWh

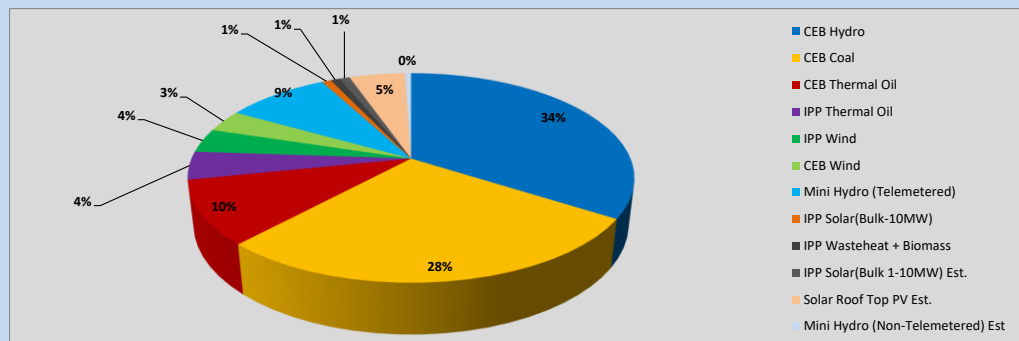


Table 01

	Generation (MWh)
CEB Hydro	15,314
CEB Coal	12,545
CEB Thermal Oil	4,437
IPP Thermal Oil	1,951
IPP Wind	1,660
CEB Wind	1,540
Mini Hydro (Telemetered)	4,024
IPP Solar (Bulk)	358
IPP Waste heat + Biomass	352
Total Generation (Excluding estimated figures)	42,181
* Estimated unserved energy	0
* Estimated Mini Hydro (Non telemetered)	242
* Estimated IPP Solar PV (Bulk 1-10MW)	406
* Estimated Solar Roof Top PV	2170
Total Generation (Including estimated figures)	44,999

* Estimated figures of CEB generation report

Table 02

	Installed Capacity (MW)
CEB Hydro	1533
CEB Coal	810
CEB Thermal Oil	773.1
IPP Thermal Oil (West Coast)	490
IPP Wind	163
CEB Wind	100
Mini Hydro	422
IPP Waste heat + Biomass	54
IPP Solar	137
Rooftop Solar (Ordinary)	326
Rooftop Solar (LT Bulk)	285
Rooftop Solar (HT Bulk)	79

Data Source - Monthly Review Report [Jan-2024]

2. Cumulative Dispatch

Following data excludes the contribution from roof top solar, non telemetered solar and mini hydro plants

Table 03 - Current Month

Category	Dispatch (GWh)	
CEB Hydro	129	34.97%
CEB Coal	114	31.09%
CEB Thermal Oil	26	7.01%
IPP Thermal	13	3.60%
SPP Wind	14	3.79%
CEB Wind	15	4.11%
Mini Hydro *	30	8.26%
IPP Solar *	23	6.30%
IPP Waste heat + BMP	3	0.87%
Total	368	

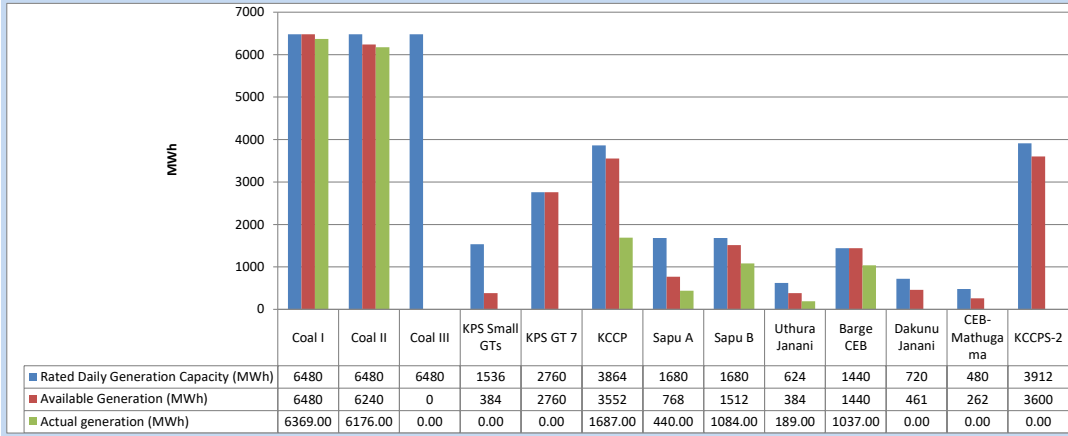
Table 04 - Current Year

Category	Dispatch (GWh)	
CEB Hydro	2,636	30.76%
CEB Coal	3,119	36.39%
CEB Thermal Oil	842	9.83%
IPP Thermal	447	5.21%
SPP Wind	166	1.94%
CEB Wind	171	2.00%
Mini Hydro *	579	6.76%
IPP Solar *	530	6.18%
IPP Waste heat	81	0.94%
Total	8,571	

*Including estimated contribution from non telemetered plants

3. CEB owned Thermal Plant Dispatch

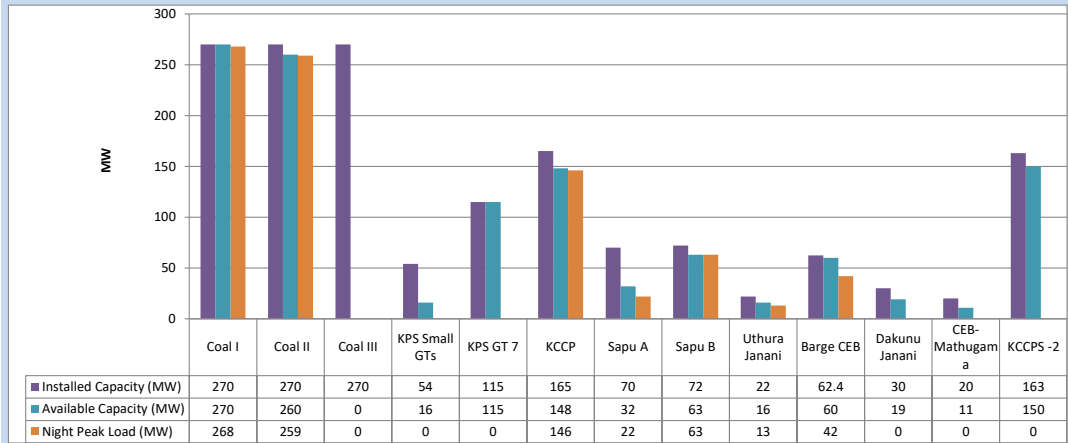
July 8, 2024



Available Generation is estimated based on plant availability at 6.00am on

July 9, 2024

4. CEB owned Thermal Plant Loading at the Night Peak

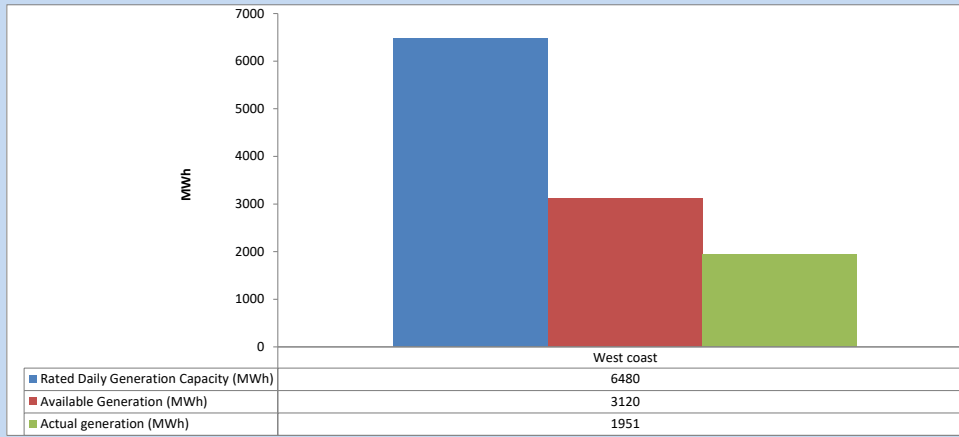


Plant availability is recorded at 6.00 am on

July 9, 2024

5. IPP owned Thermal Plant Dispatch

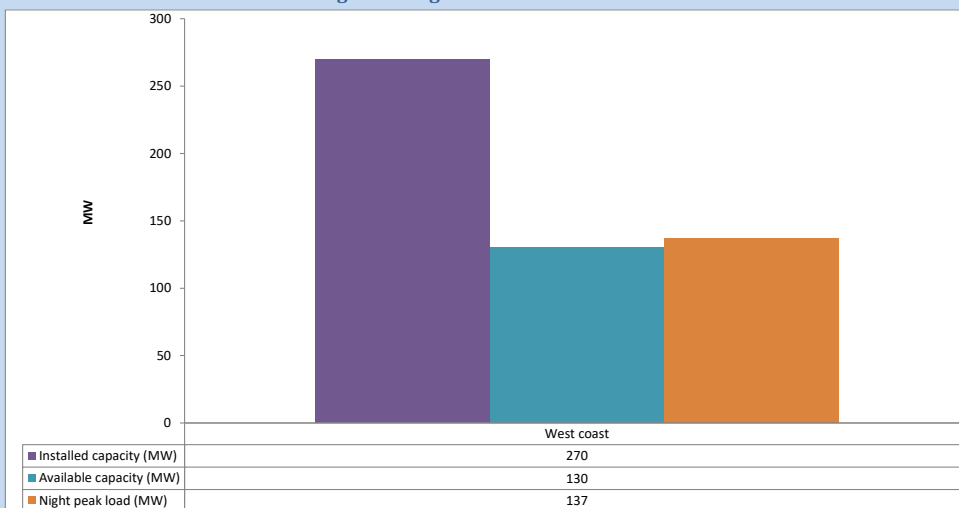
July 8, 2024



Available Generation is estimated based on plant availability at 6.00am on

July 9, 2024

6. IPP owned Thermal Plant Loading at the Night Peak

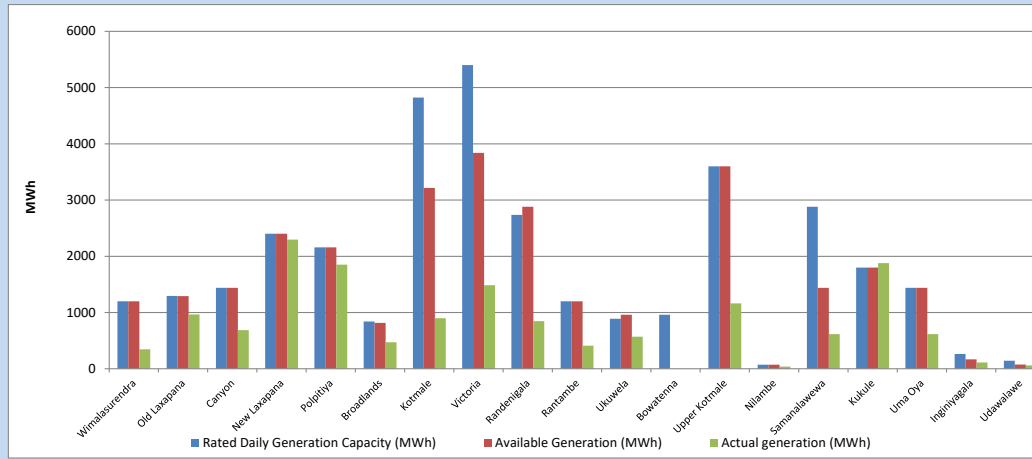


Plant availability is recorded at 6.00 am on

July 9, 2024

7. Major Hydro Plant Dispatch

July 8, 2024

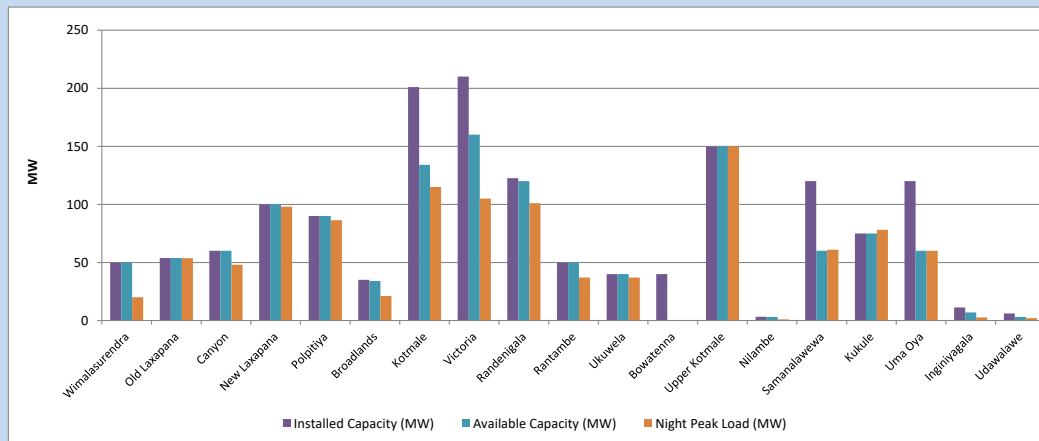


Available Generation is estimated based on plant availability at 6.00am on
Broadlands power plant is operating in the Commissioning Stage

July 9, 2024

8. Major Hydro Plant Loading at Night Peak

July 8, 2024



Plant availability is recorded at 6.00 am on
Broadlands power plant is operating in the Commissioning Stage

July 9, 2024

9. Summary of Major Plant performance

Table 05

Plant	Maximum Available Total Capacity	Plant Availability	Night peak Load	Plant Dispatch
	(MW)	(MW)	(MW)	(MWh)
Wimalasurendra	50	50	20	346
Old Laxapana	54	54	54	967
Canyon	60	60	48	687
New Laxapana	100	100	98	2,297
Polpitiya	90	90	86	1,850
Broadlands	35	34	21	473
Kotmale	201	134	115	900
Victoria	210	160	105	1,486
Randenigala	123	120	101	846
Rantambe	50	50	37	411
Ukuwela	40	40	37	569
Bowatenna	40	0	0	0
Upper Kotmale	150	150	150	1,163
Nilambe	3	3	1	38
Samanalawewa	120	60	61	615
Kukule	75	75	78	1,878
Uma Oya (Testing)	120	60	60	615
Inginiyagala	11	7	3	113
Udawalawe	6	3	2	61
Puttalam Coal I	270	270	268	6,369
Puttalam Coal II	270	260	259	6,176
Puttalam Coal III	270	0	0	0
KPS Small GTs	54	16	0	0
KPS GT 7	115	115	0	0
KCCP	165	148	146	1,687
Sapugaskanda A	70	32	22	440
Sapugaskanda B	72	63	63	1,084
Uthura Janani	22	16	13	189
Barge CEB	62	60	42	1,037
CEB-Hambantota	30	19	0	0
CEB-Mathugama	20	11	0	0
ACE Matara	24	0	0	0
Asia Power	50	0	0	0
KCCPS -2	163	150	0	0
West Coast	270	130	137	1,951
Nothern Power	36	0	0	0
ACE Embilipitiya	93	0	0	0
Sobadhanavi	220	0	0	0
Total	3,594	2,540	2,389	42,182

Note-

Plant availability is the availability recorded at 6 am on
Installed Capacity is sourced from CEB Annual Report- 2022

July 9, 2024

10. Contribution to the Night Peak in MW

July 8, 2024

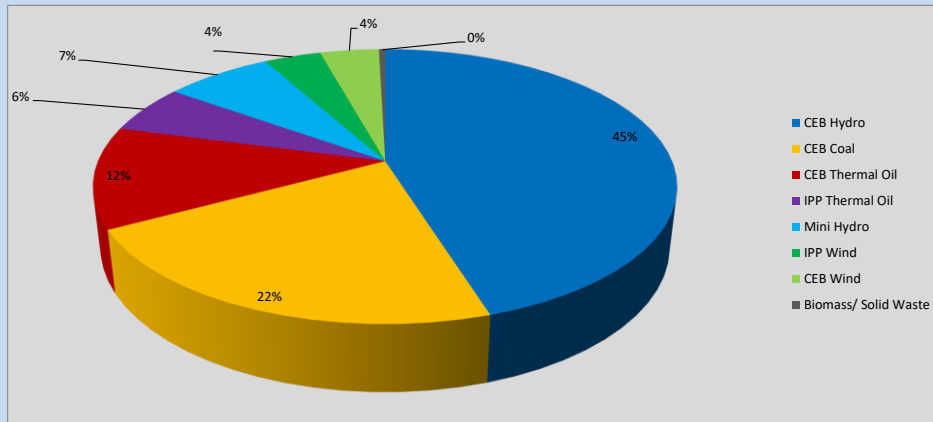


Table 06

CEB Hydro	1080	MW
CEB Coal	527	MW
CEB Thermal Oil	286	MW
IPP Thermal Oil	137	MW
Mini Hydro (Telemetered)	169	MW
IPP Wind	89.9	MW
CEB Wind	93.3	MW
Biomass/ Solid Waste	10	MW

Recorded Peak Demand Data

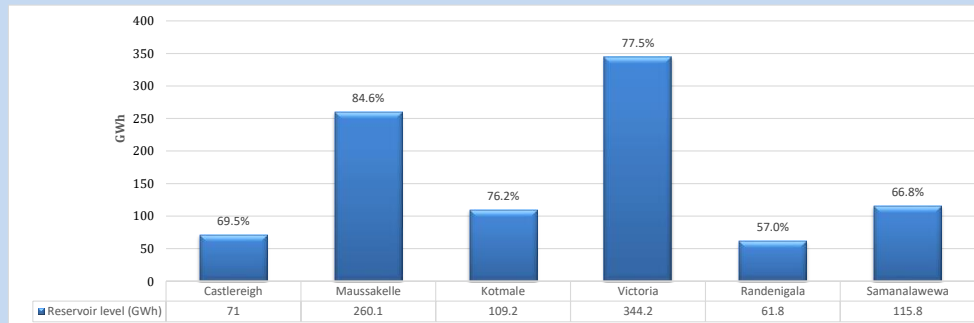
Table 07

Night Peak*	2,392	MW
Day Peak Maximum Demand	2,061	MW
Day Peak Minimum Demand	1,655	MW
Off Peak Minimum Demand	1,276	MW

Above figures are excluding contribution from roof top solar, non telemetered solar and mini hydro plants

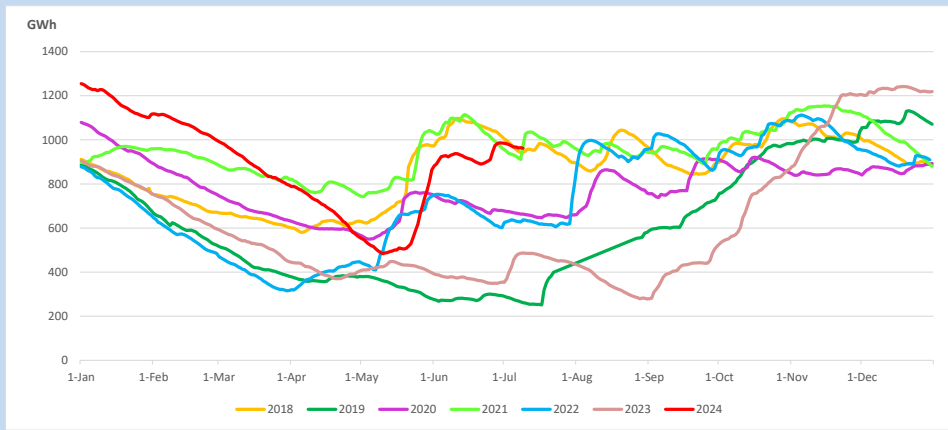
Reservoir Levels -

as at 06.00 Hr on July 9, 2024

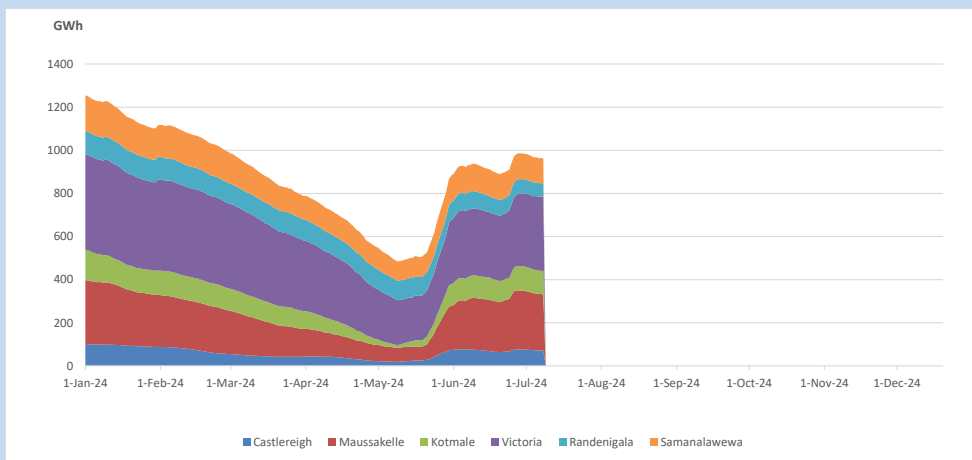


Total Reservoir Level 962.1 GWh
% of Total capacity 75.2%

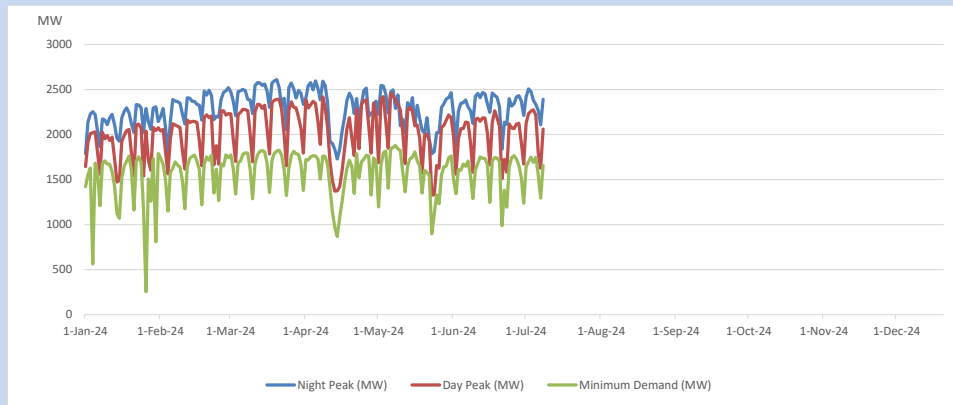
11. Comparison of Total Reservoir Storage Levels with Past Years



12. Variation of Major Hydro Reservoir Levels in the current year (GWh)



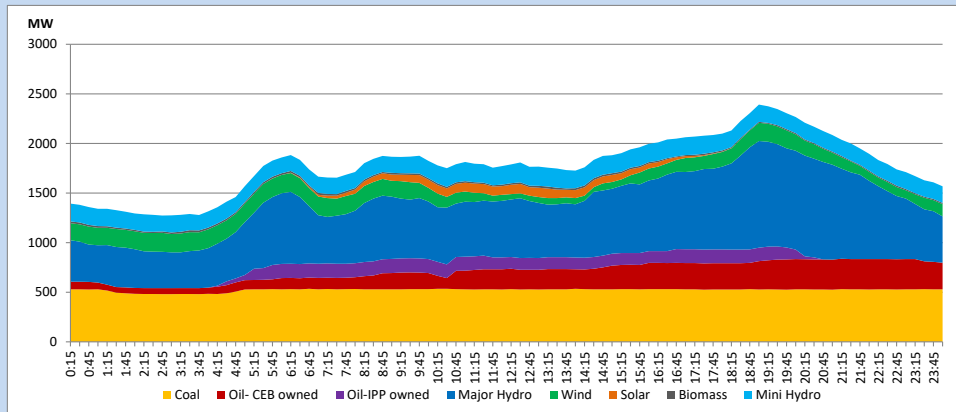
13. Variation of Demand during the current year



The above figures are excluding contribution from roof top solar, non telemetered solar and mini hydro plants

14. Daily Load Curve

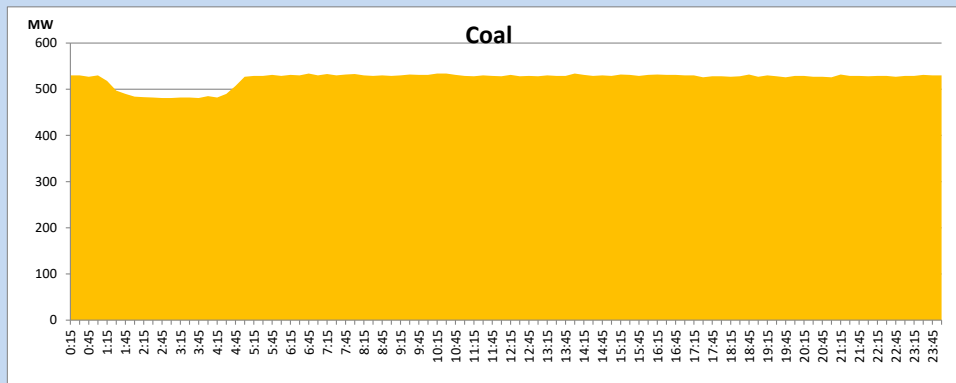
July 8, 2024



Solar and wind data is based on Telemetered Power Stations only

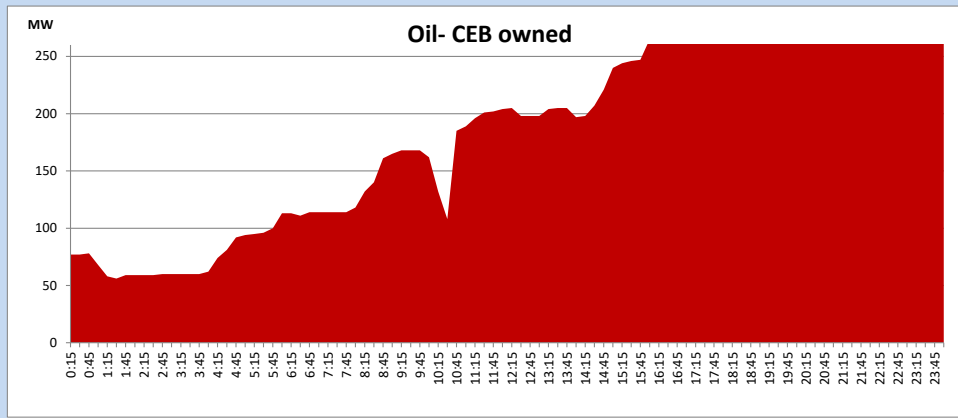
Coal Generation during

July 8, 2024



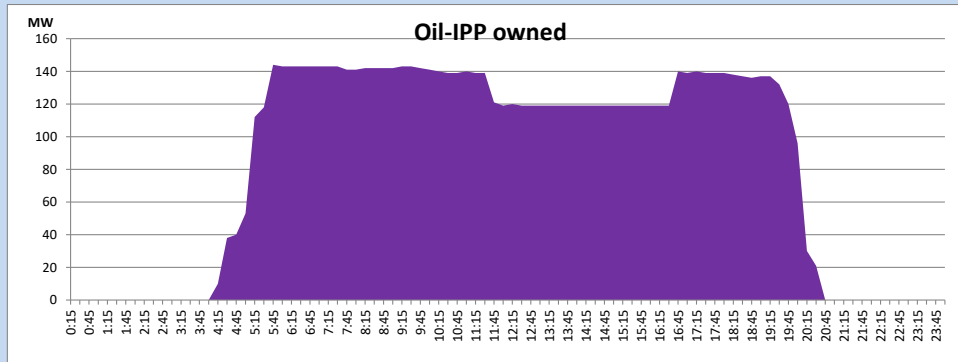
CEB Oil Plant Generation during

July 8, 2024



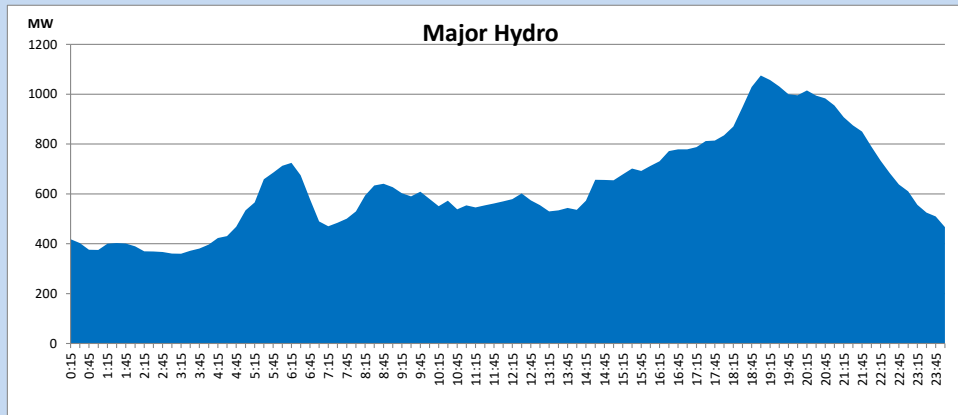
IPP Oil Plant Generation during

July 8, 2024



Major Hydro Generation during

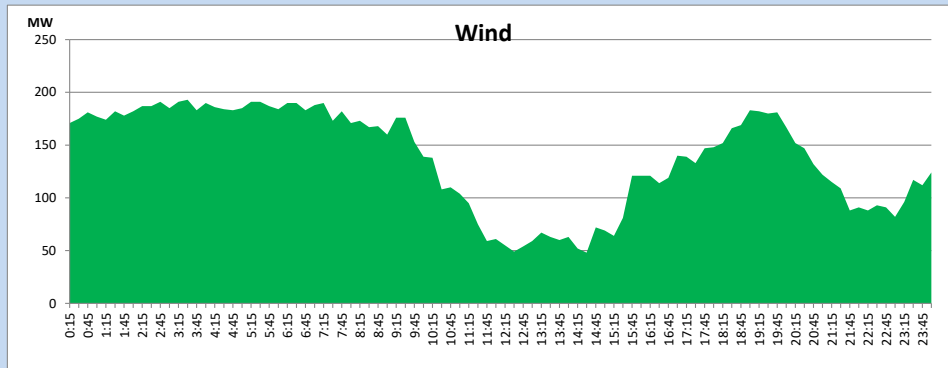
July 8, 2024



Wind Generation during

July 8, 2024

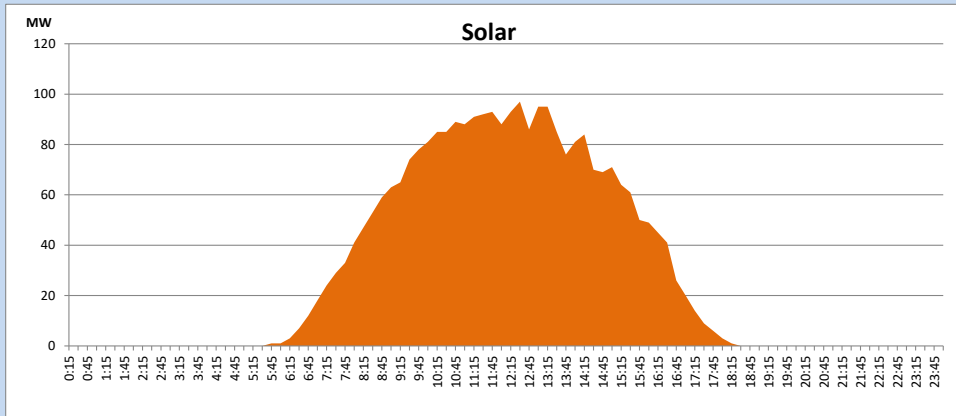
Based on Telemetered Power Stations only



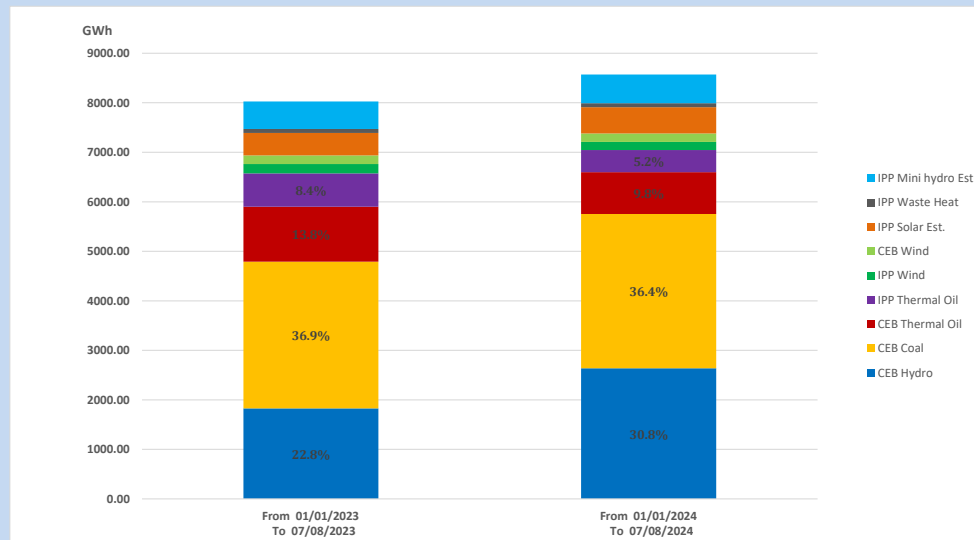
Solar Generation during

July 8, 2024

Based on Telemetered Power Stations only



15. Cumulative Dispatch Comparison with Last Year



Cumulative dispatch
 From 01/01/2023 To 07/08/2023
 From 01/01/2024 To 07/08/2024

8027 GWh
 8571 GWh

The above figures are including contribution from roof top solar, non telemetered solar and mini hydro plants)
 Unserviced energy due to power cuts has been excluded in 2023

Thermal Plant Fuel types

Table 08

Power Station	Primary Fuel
CEB Thermal	
Sapugaskanda 1	Heavy Fuel
Sapugaskanda 2	Heavy Fuel
Kelanitissa Small Gas Turbines	Auto Diesel
GT 7 - Kelanitissa	Auto Diesel
Kelanitissa CCY	Naphtha or Diesel
Lakvijaya 1	Coal
Lakvijaya 2	Coal
Lakvijaya 3	Coal
Uthuru Janani	Heavy Fuel
Barge CEB	Heavy Fuel
KCCPS -2	Auto Diesel

Power Station	Primary Fuel
Private Thermal	
West Coast	Auto Diesel / Heavy Fuel
Sobadhanavi	Auto Diesel

Major Incidents reported during the day

July 8, 2024

- 1) Kelanitissa – Biyagama 220kV cct 01 and 02, which were manually switched off on 07.07.2024, were normalized at 14:26hrs and 15:03hrs respectively.