

Generation and Reservoirs Statistics

July 5, 2024



PUBLIC UTILITIES COMMISSION OF SRI LANKA

1. Daily Generation Mix in MWh

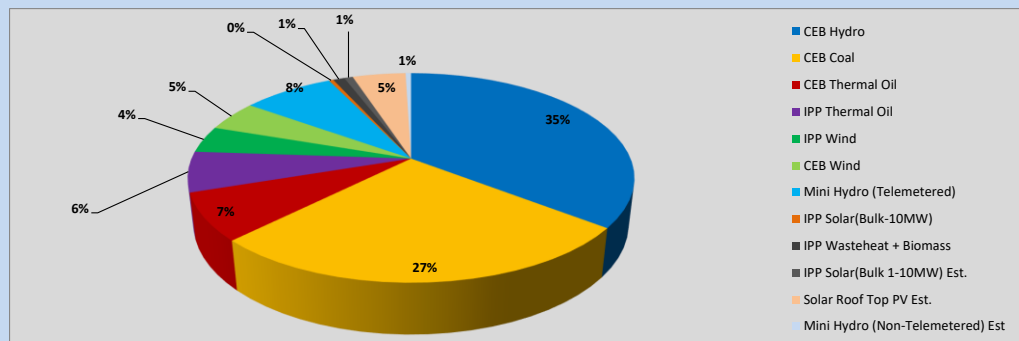


Table 01

	Generation (MWh)
CEB Hydro	16,723
CEB Coal	12,792
CEB Thermal Oil	3,462
IPP Thermal Oil	2,932
IPP Wind	1,941
CEB Wind	2,211
Mini Hydro (Telemetered)	3,732
IPP Solar (Bulk)	179
IPP Waste heat + Biomass	470
Total Generation (Excluding estimated figures)	44,442
* Estimated unserved energy	0
* Estimated Mini Hydro (Non telemetered)	225
* Estimated IPP Solar PV (Bulk 1-10MW)	353
* Estimated Solar Roof Top PV	2170
Total Generation (Including estimated figures)	47,190

* Estimated figures of CEB generation report

Table 02

	Installed Capacity (MW)
CEB Hydro	1533
CEB Coal	810
CEB Thermal Oil	773.1
IPP Thermal Oil (West Coast)	490
IPP Wind	163
CEB Wind	100
Mini Hydro	422
IPP Waste heat + Biomass	54
IPP Solar	137
Rooftop Solar (Ordinary)	326
Rooftop Solar (LT Bulk)	285
Rooftop Solar (HT Bulk)	79

Data Source - Monthly Review Report [Jan-2024]

2. Cumulative Dispatch

Following data excludes the contribution from roof top solar, non telemetered solar and mini hydro plants

Table 03 - Current Month

Category	Dispatch (GWh)	
CEB Hydro	83	34.43%
CEB Coal	77	32.24%
CEB Thermal Oil	17	7.27%
IPP Thermal	10	4.24%
SPP Wind	9	3.61%
CEB Wind	10	4.00%
Mini Hydro *	17	7.26%
IPP Solar *	15	6.12%
IPP Waste heat + BMP	2	0.83%
Total	240	

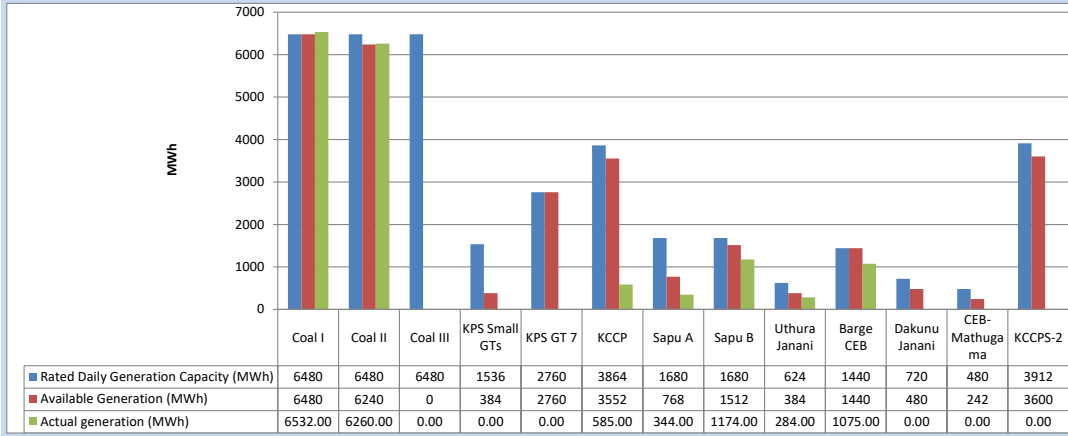
Table 04 - Current Year

Category	Dispatch (GWh)	
CEB Hydro	2,590	30.68%
CEB Coal	3,082	36.50%
CEB Thermal Oil	834	9.88%
IPP Thermal	444	5.26%
SPP Wind	161	1.90%
CEB Wind	166	1.96%
Mini Hydro *	566	6.71%
IPP Solar *	521	6.17%
IPP Waste heat	79	0.94%
Total	8,443	

*Including estimated contribution from non telemetered plants

3. CEB owned Thermal Plant Dispatch

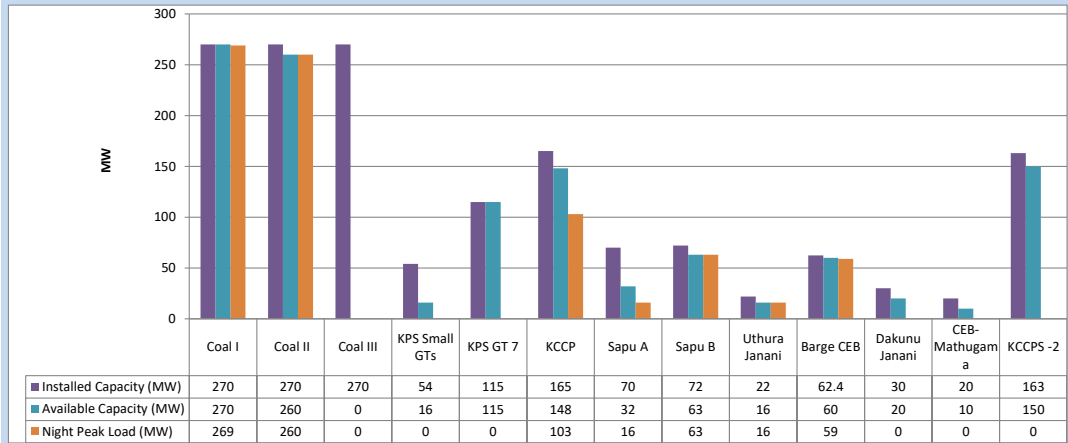
July 5, 2024



Available Generation is estimated based on plant availability at 6.00am on

July 6, 2024

4. CEB owned Thermal Plant Loading at the Night Peak

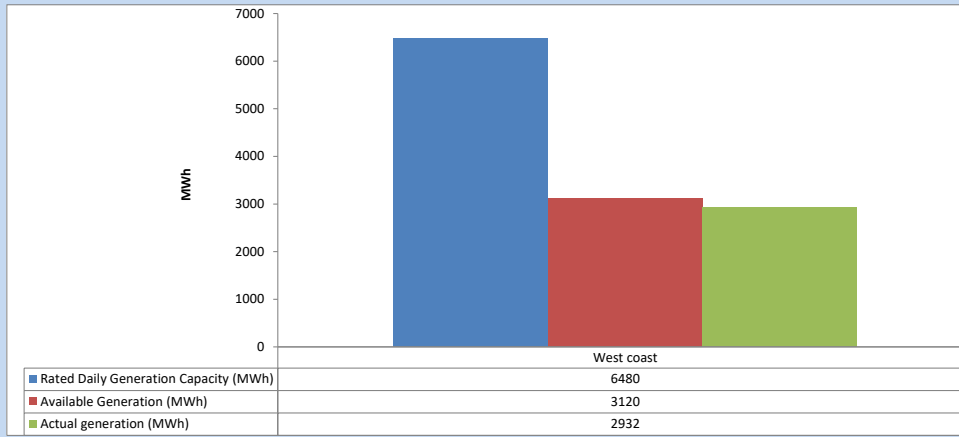


Plant availability is recorded at 6.00 am on

July 6, 2024

5. IPP owned Thermal Plant Dispatch

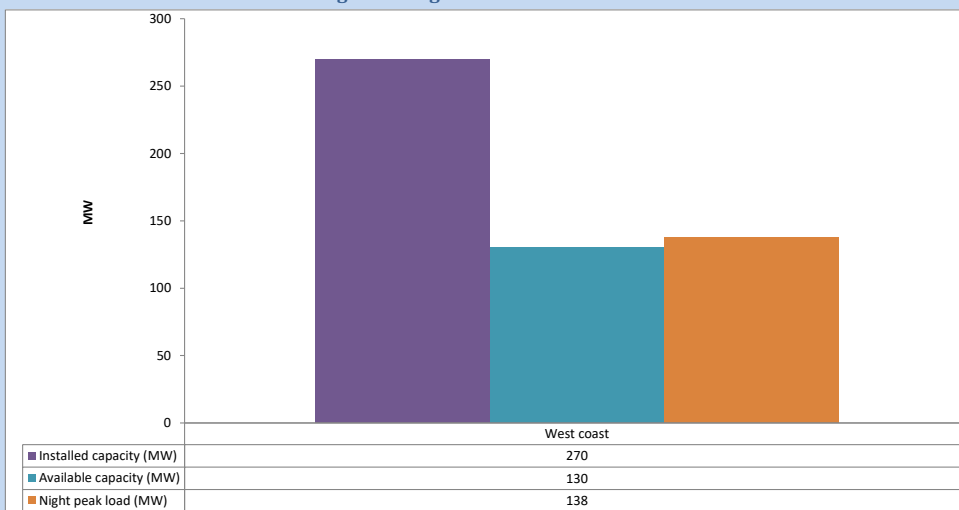
July 5, 2024



Available Generation is estimated based on plant availability at 6.00am on

July 6, 2024

6. IPP owned Thermal Plant Loading at the Night Peak

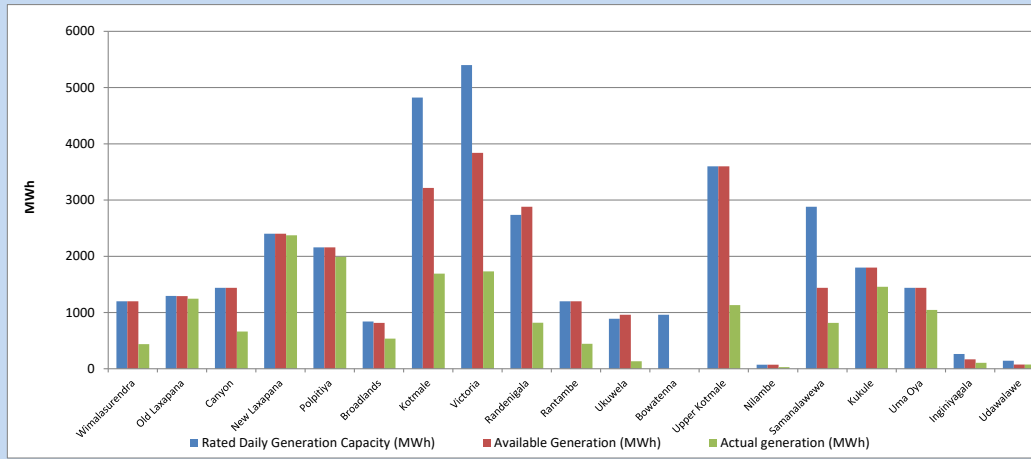


Plant availability is recorded at 6.00 am on

July 6, 2024

7. Major Hydro Plant Dispatch

July 5, 2024

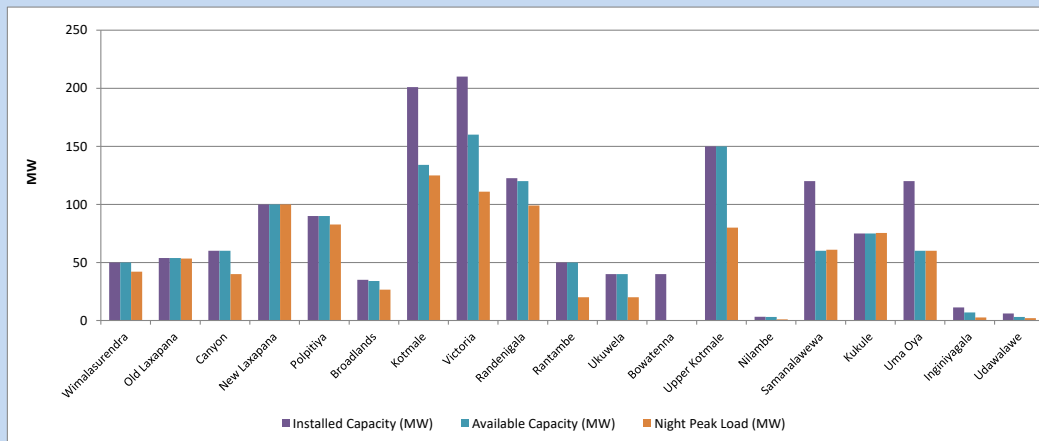


Available Generation is estimated based on plant availability at 6.00am on
Broadlands power plant is operating in the Commissioning Stage

July 6, 2024

8. Major Hydro Plant Loading at Night Peak

July 5, 2024



Plant availability is recorded at 6.00 am on
Broadlands power plant is operating in the Commissioning Stage

July 6, 2024

9. Summary of Major Plant performance

Table 05

Plant	Maximum Available Total Capacity	Plant Availability	Night peak Load	Plant Dispatch
	(MW)	(MW)	(MW)	(MWh)
Wimalasurendra	50	50	42	439
Old Laxapana	54	54	53	1,245
Canyon	60	60	40	662
New Laxapana	100	100	100	2,373
Polpitiya	90	90	83	1,990
Broadlands	35	34	27	536
Kotmale	201	134	125	1,690
Victoria	210	160	111	1,732
Randenigala	123	120	99	820
Rantambe	50	50	20	445
Ukuwela	40	40	20	133
Bowatenna	40	0	0	0
Upper Kotmale	150	150	80	1,132
Nilambe	3	3	1	28
Samanalawewa	120	60	61	815
Kukule	75	75	75	1,457
Uma Oya (Testing)	120	60	60	1,046
Inginiyagala	11	7	3	106
Udawalawe	6	3	2	74
Puttalam Coal I	270	270	269	6,532
Puttalam Coal II	270	260	260	6,260
Puttalam Coal III	270	0	0	0
KPS Small GTs	54	16	0	0
KPS GT 7	115	115	0	0
KCCP	165	148	103	585
Sapugaskanda A	70	32	16	344
Sapugaskanda B	72	63	63	1,174
Uthura Janani	22	16	16	284
Barge CEB	62	60	59	1,075
CEB-Hambantota	30	20	0	0
CEB-Mathugama	20	10	0	0
ACE Matara	24	0	0	0
Asia Power	50	0	0	0
KCCPS -2	163	150	0	0
West Coast	270	130	138	2,932
Nothern Power	36	0	0	0
ACE Embilipitiya	93	0	0	0
Sobadhanavi	220	0	0	0
Total	3,594	2,540	2,312	44,442

Note-

Plant availability is the availability recorded at 6 am on
Installed Capacity is sourced from CEB Annual Report- 2022

July 6, 2024

10. Contribution to the Night Peak in MW

July 5, 2024

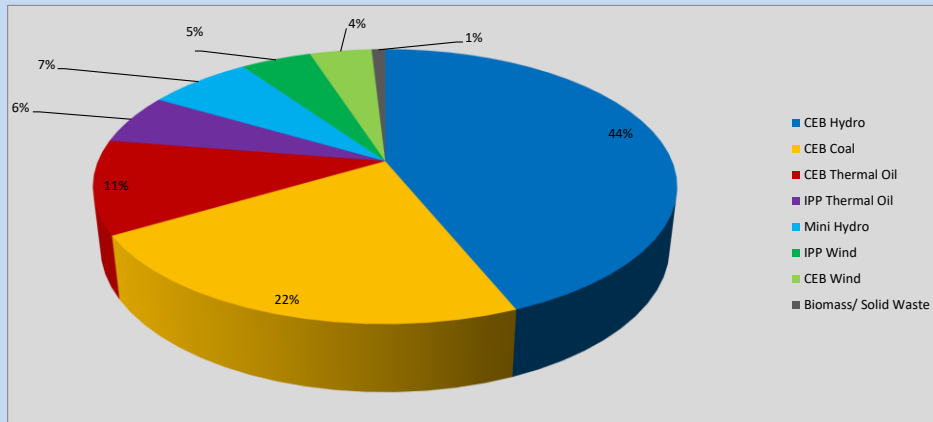


Table 06

CEB Hydro	1023	MW
CEB Coal	529	MW
CEB Thermal Oil	257	MW
IPP Thermal Oil	138	MW
Mini Hydro (Telemetered)	161	MW
IPP Wind	109.3	MW
CEB Wind	95.6	MW
Biomass/ Solid Waste	21	MW

Recorded Peak Demand Data

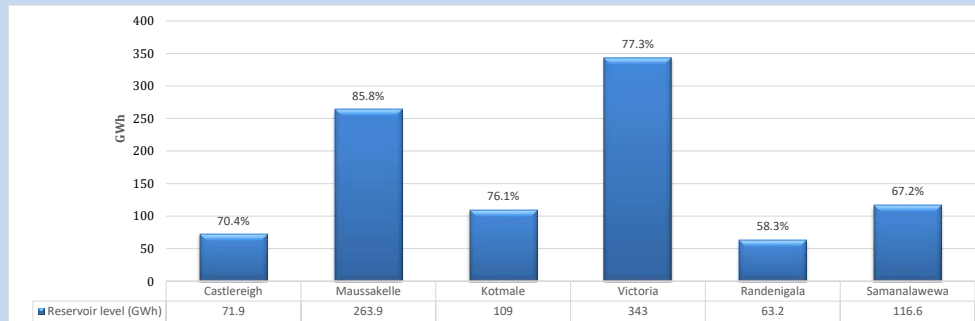
Table 07

Night Peak*	2,334	MW
Day Peak Maximum Demand	2,214	MW
Day Peak Minimum Demand	1,748	MW
Off Peak Minimum Demand	1,432	MW

Above figures are excluding contribution from roof top solar, non telemetered solar and mini hydro plants

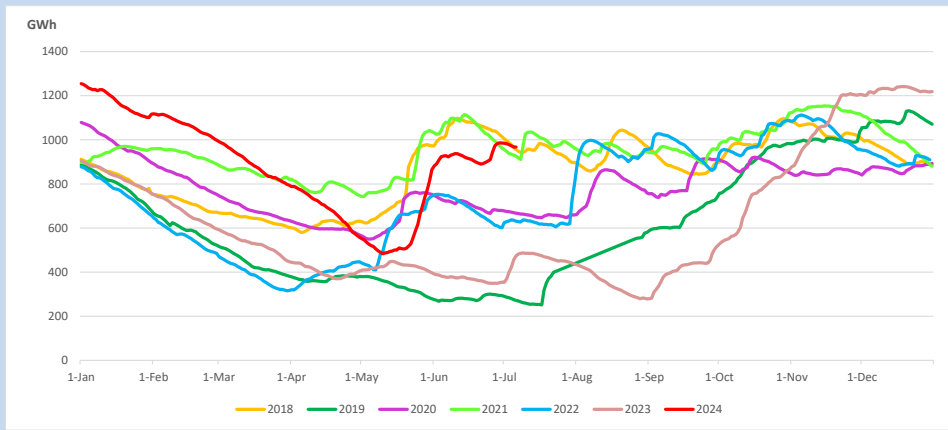
Reservoir Levels -

as at 06.00 Hr on July 6, 2024

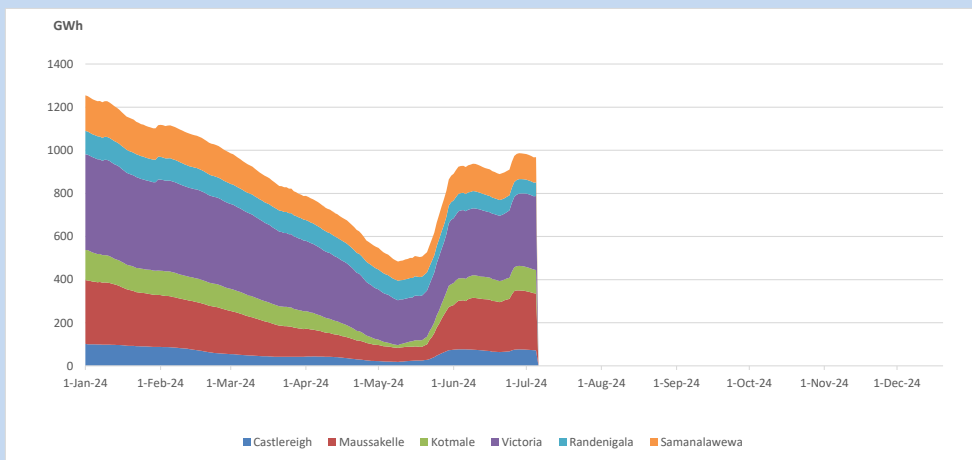


Total Reservoir Level 967.6 GWh
% of Total capacity 75.7%

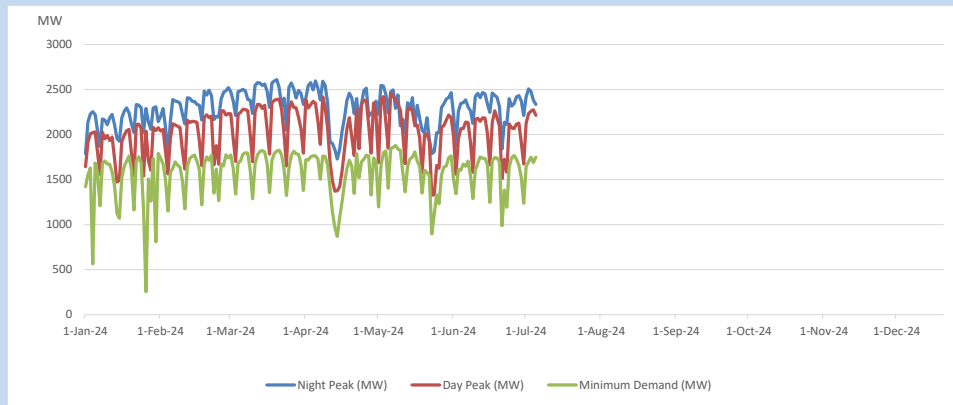
11. Comparison of Total Reservoir Storage Levels with Past Years



12. Variation of Major Hydro Reservoir Levels in the current year (GWh)



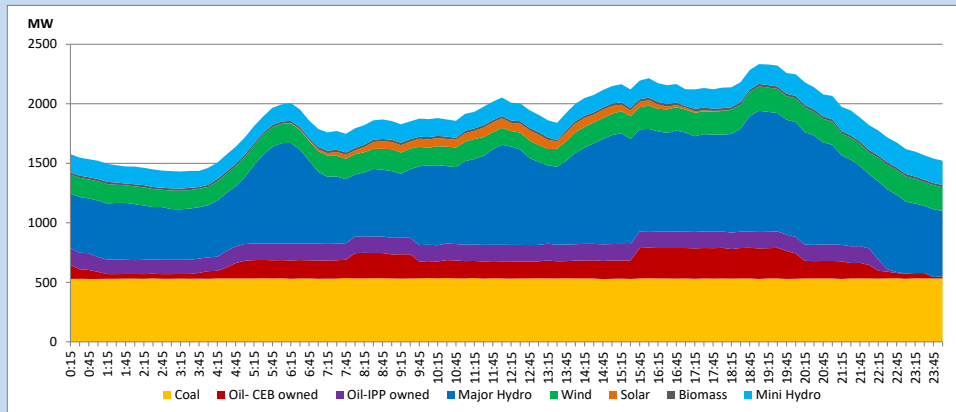
13. Variation of Demand during the current year



The above figures are excluding contribution from roof top solar, non telemetered solar and mini hydro plants

14. Daily Load Curve

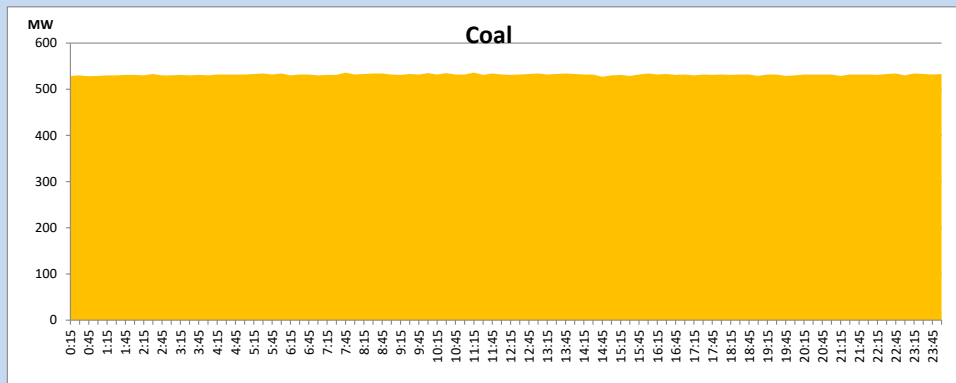
July 5, 2024



Solar and wind data is based on Telemetered Power Stations only

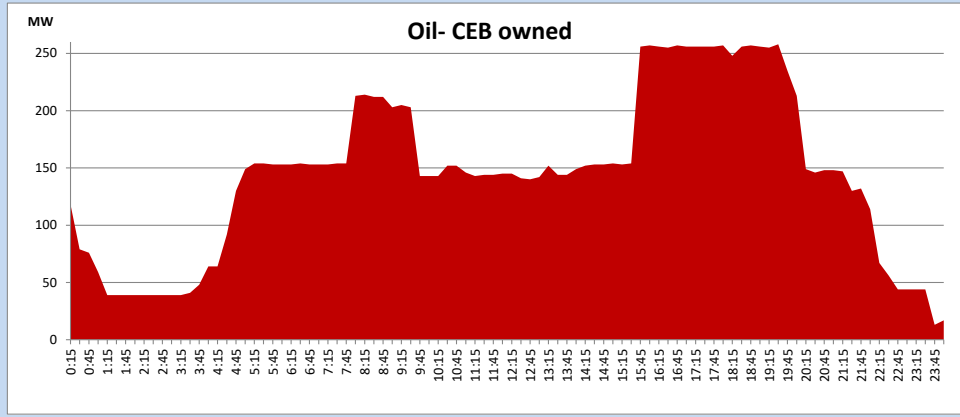
Coal Generation during

July 5, 2024



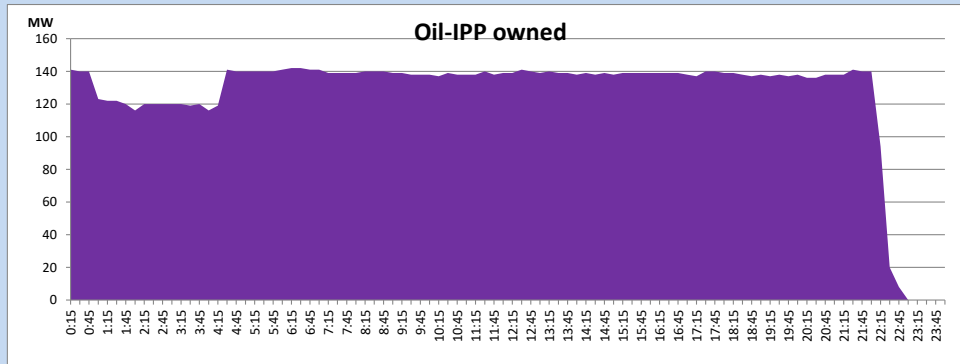
CEB Oil Plant Generation during

July 5, 2024



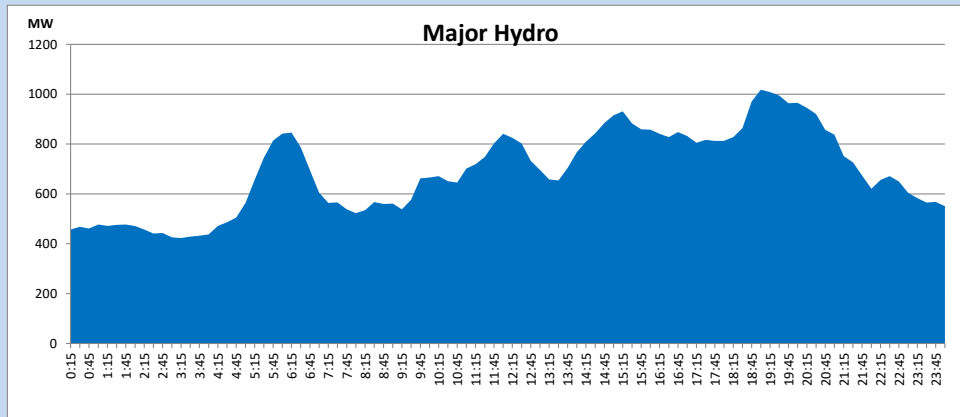
IPP Oil Plant Generation during

July 5, 2024



Major Hydro Generation during

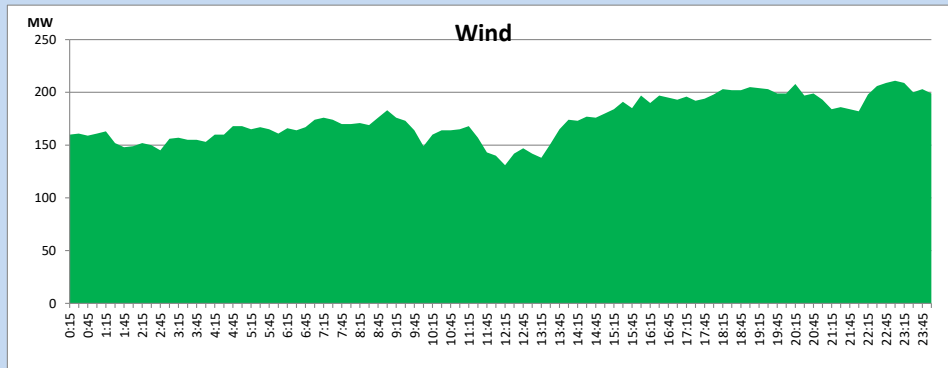
July 5, 2024



Wind Generation during

July 5, 2024

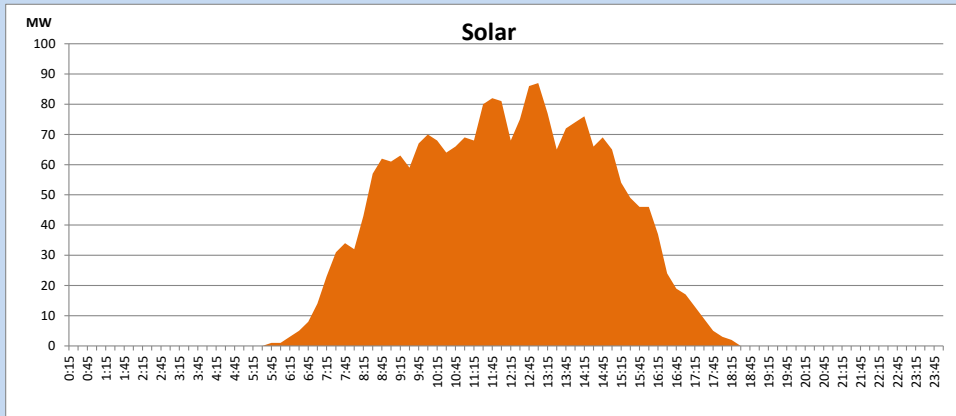
Based on Telemetered Power Stations only



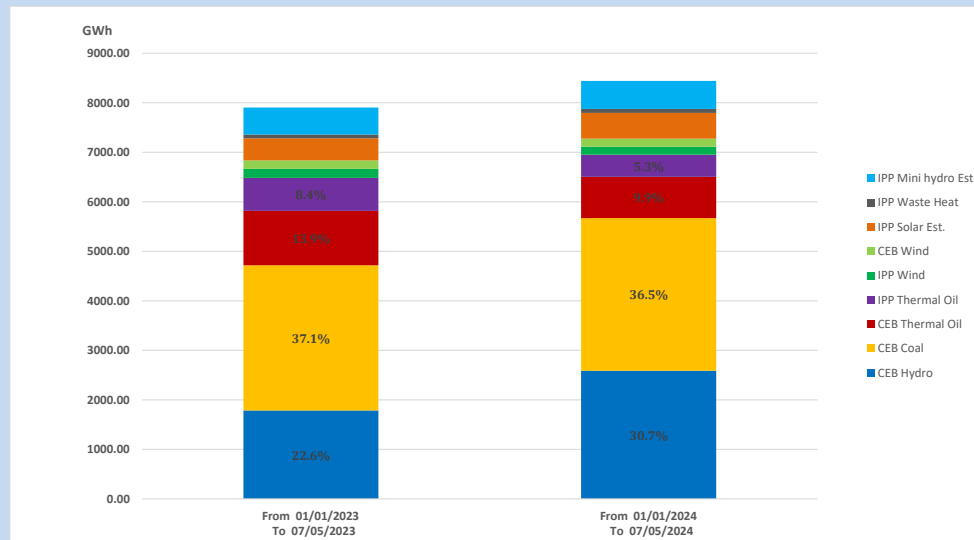
Solar Generation during

July 5, 2024

Based on Telemetered Power Stations only



15. Cumulative Dispatch Comparison with Last Year



Cumulative dispatch

From 01/01/2023 To 07/05/2023

7905 GWh

From 01/01/2024 To 07/05/2024

8443 GWh

The above figures are including contribution from roof top solar, non telemetered solar and mini hydro plants)

Unserviced energy due to power cuts has been excluded in 2023

Thermal Plant Fuel types

Table 08

Power Station	Primary Fuel
CEB Thermal	
Sapugaskanda 1	Heavy Fuel
Sapugaskanda 2	Heavy Fuel
Kelanitissa Small Gas Turbines	Auto Diesel
GT 7 - Kelanitissa	Auto Diesel
Kelanitissa CCY	Naphtha or Diesel
Lakvijaya 1	Coal
Lakvijaya 2	Coal
Lakvijaya 3	Coal
Uthuru Janani	Heavy Fuel
Barge CEB	Heavy Fuel
KCCPS -2	Auto Diesel

Power Station	Primary Fuel
Private Thermal	
West Coast	Auto Diesel / Heavy Fuel
Sobadhanavi	Auto Diesel

Major Incidents reported during the day

July 5, 2024

- 1) KCCP ST made unavailable at 8:36hrs due to a water leak and it was made available for generation at 17:48hrs.
- 2) Thulhiriya 132/33kV T/F 02 tripped from both ends at 11:34hrs due to the operation of REF protection. The T/F is yet to be normalized.
- 3) New Polpitiya 220/132kV T/F 01, which was tripped on 04.07.2024, was normalized at 12:36hrs.
- 4) Kolonnawa - Seethawaka 132kV cct tripped and A/R from both ends at 13:24hrs due to the operation of distance protection. At the same time, Kosgama - Polpitiya 132kV cct tripped & A/R from both ends due to the operation of distance protection.
- 5) New Galle - Matara 132kV cct 02 tripped and A/R from both ends at 05:37hrs (06.07.2024) due to the operation of distance protection.
- 6) Kukule pond spilling started at 01:37hrs (06.07.2024) and continues to the present hour.