

Generation and Reservoirs Statistics

May 26, 2024



PUBLIC UTILITIES COMMISSION OF SRI LANKA

1. Daily Generation Mix in MWh

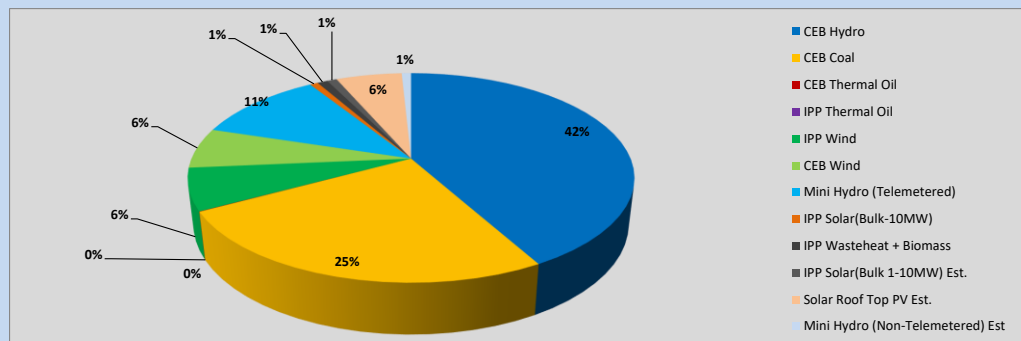


Table 01

	Generation (MWh)
CEB Hydro	15,659
CEB Coal	9,395
CEB Thermal Oil	16
IPP Thermal Oil	-
IPP Wind	2,424
CEB Wind	2,335
Mini Hydro (Telemetered)	4,192
IPP Solar (Bulk)	261
IPP Waste heat + Biomass	330
Total Generation (Excluding estimated figures)	34,612
* Estimated unserved energy	0
* Estimated Mini Hydro (Non telemetered)	303
* Estimated IPP Solar PV (Bulk 1-10MW)	316
* Estimated Solar Roof Top PV	2130
Total Generation (Including estimated figures)	37,361

* Estimated figures of CEB generation report

Table 02

	Installed Capacity (MW)
CEB Hydro	1530
CEB Coal	810
CEB Thermal Oil	773.1
IPP Thermal Oil (West Coast)	270
IPP Wind	148
CEB Wind	100
Mini Hydro	416
IPP Waste heat + Biomass	50
IPP Solar	110
Rooftop Solar (Ordinary)	250
Rooftop Solar (LT Bulk)	234
Rooftop Solar (HT Bulk)	56

Data Source - Monthly Review Report [Jan-2024]

2. Cumulative Dispatch

Following data excludes the contribution from roof top solar, non telemetered solar and mini hydro plants

Table 03 - Current Month

Category	Dispatch (GWh)	
CEB Hydro	305	26.15%
CEB Coal	456	39.16%
CEB Thermal Oil	198	17.02%
IPP Thermal	3	0.25%
SPP Wind	21	1.83%
CEB Wind	23	1.94%
Mini Hydro *	78	6.72%
IPP Solar *	71	6.11%
IPP Waste heat + BMP	10	0.83%
Total	1,166	

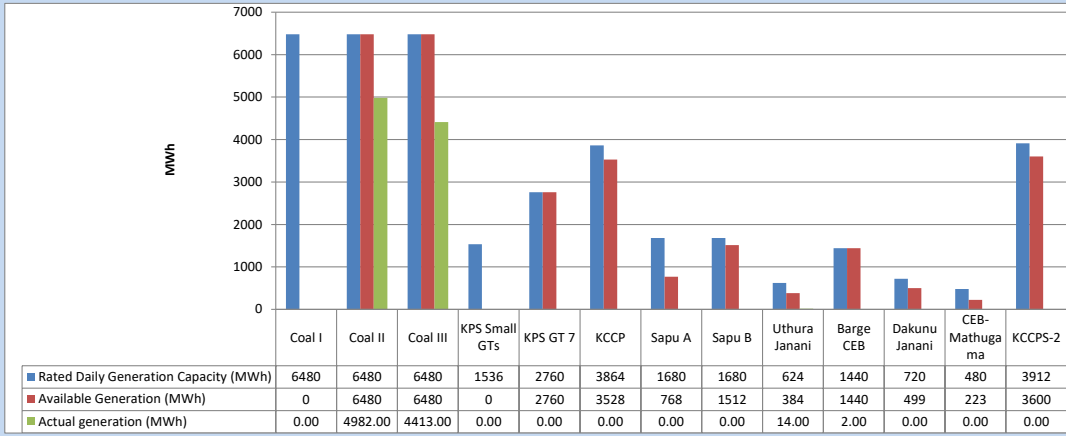
Table 04 - Current Year

Category	Dispatch (GWh)	
CEB Hydro	1,946	29.59%
CEB Coal	2,417	36.75%
CEB Thermal Oil	824	12.53%
IPP Thermal	411	6.24%
SPP Wind	79	1.20%
CEB Wind	86	1.31%
Mini Hydro *	389	5.91%
IPP Solar *	367	5.58%
IPP Waste heat	59	0.89%
Total	6,577	

*Including estimated contribution from non telemetered plants

3. CEB owned Thermal Plant Dispatch

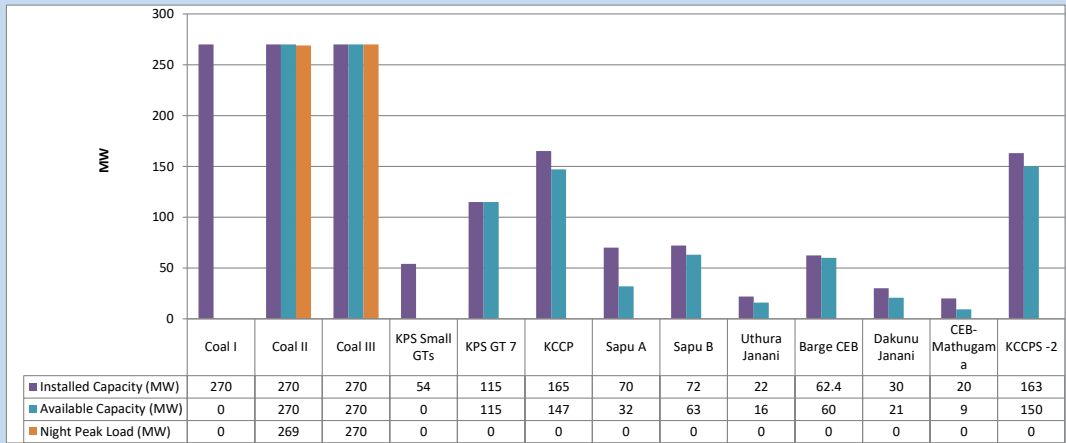
May 26, 2024



Available Generation is estimated based on plant availability at 6.00am on

May 27, 2024

4. CEB owned Thermal Plant Loading at the Night Peak

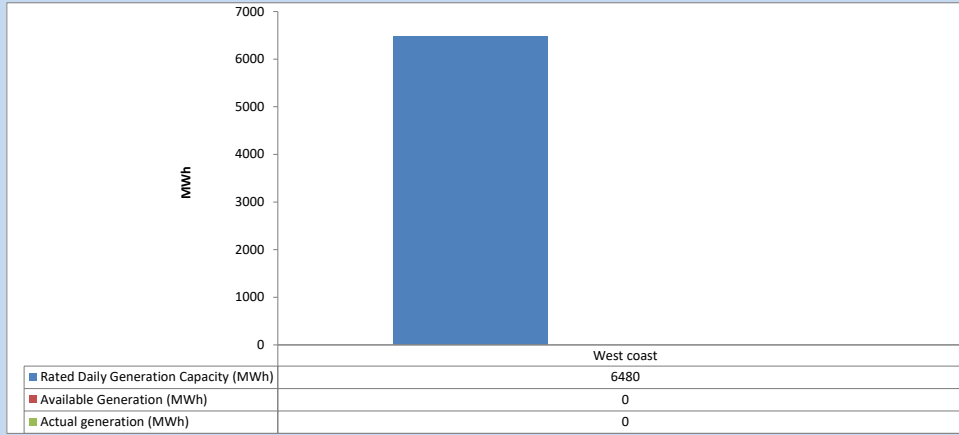


Plant availability is recorded at 6.00 am on

May 27, 2024

5. IPP owned Thermal Plant Dispatch

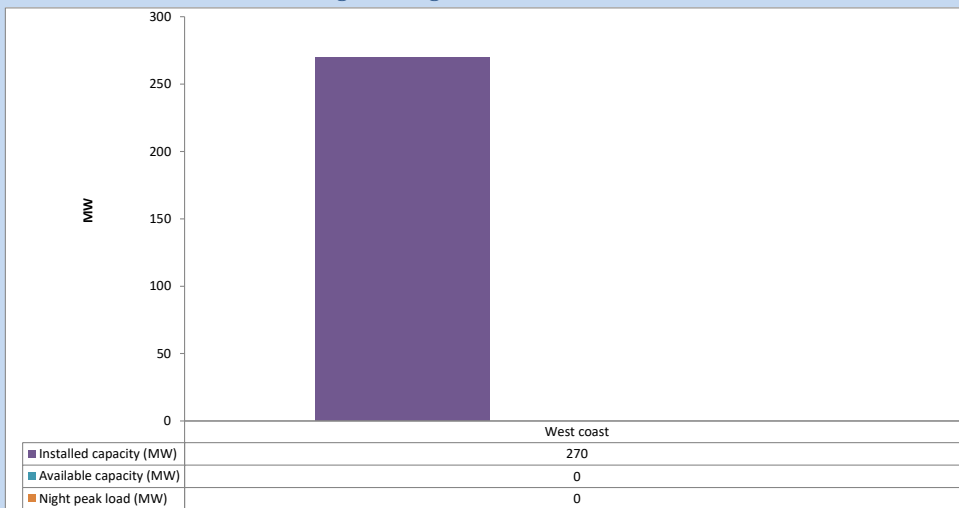
May 26, 2024



Available Generation is estimated based on plant availability at 6.00am on

May 27, 2024

6. IPP owned Thermal Plant Loading at the Night Peak

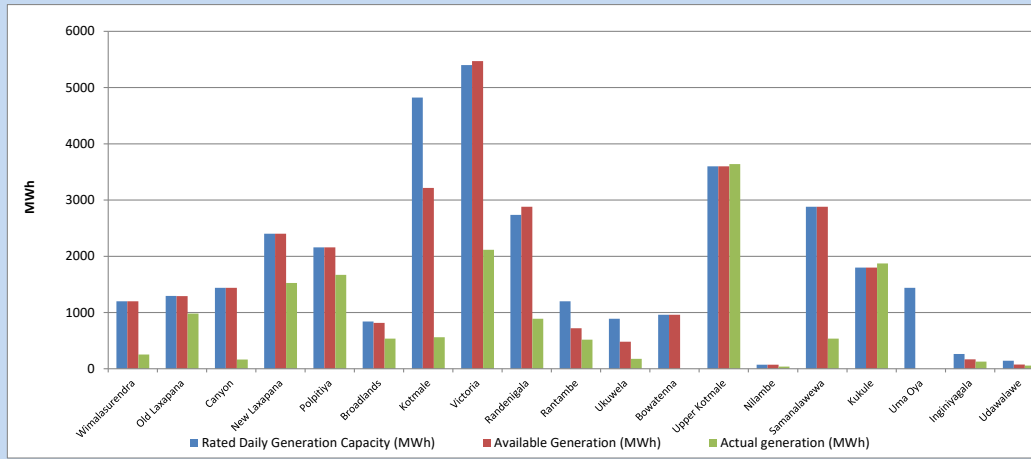


Plant availability is recorded at 6.00 am on

May 27, 2024

7. Major Hydro Plant Dispatch

May 26, 2024

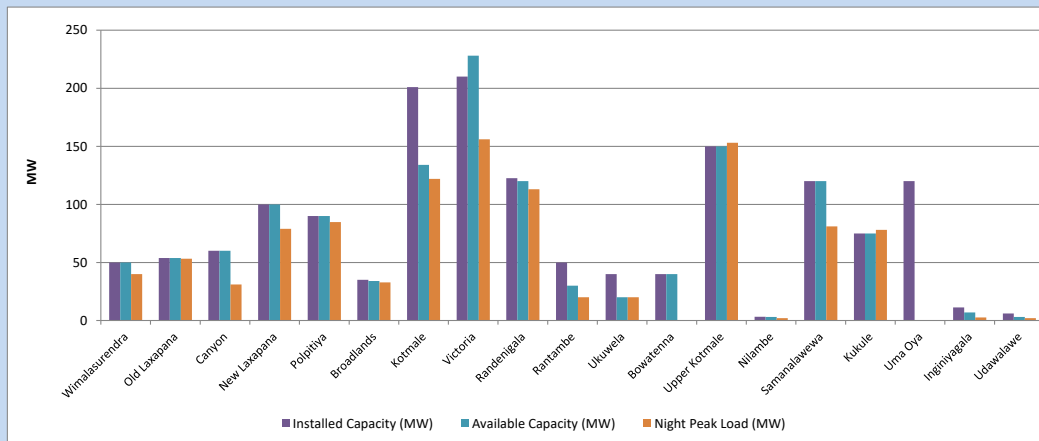


Available Generation is estimated based on plant availability at 6.00am on
Broadlands power plant is operating in the Commissioning Stage

May 27, 2024

8. Major Hydro Plant Loading at Night Peak

May 26, 2024



Plant availability is recorded at 6.00 am on
Broadlands power plant is operating in the Commissioning Stage

May 27, 2024

9. Summary of Major Plant performance

Table 05

Plant	Maximum Available Total Capacity	Plant Availability	Night peak Load	Plant Dispatch
	(MW)	(MW)	(MW)	(MWh)
Wimalasurendra	50	50	40	252
Old Laxapana	54	54	53	981
Canyon	60	60	31	163
New Laxapana	100	100	79	1,524
Polpitiya	90	90	85	1,670
Broadlands	35	34	33	536
Kotmale	201	134	122	560
Victoria	210	228	156	2,115
Randenigala	123	120	113	890
Rantambe	50	30	20	519
Ukuwela	40	20	20	176
Bowatenna	40	40	0	0
Upper Kotmale	150	150	153	3,641
Nilambe	3	3	2	38
Samanalawewa	120	120	81	536
Kukule	75	75	78	1,872
Uma Oya (Testing)	120	0	0	0
Inginiyagala	11	7	3	128
Udawalawe	6	3	2	58
Puttalam Coal I	270	0	0	0
Puttalam Coal II	270	270	269	4,982
Puttalam Coal III	270	270	270	4,413
KPS Small GTs	54	0	0	0
KPS GT 7	115	115	0	0
KCCP	165	147	0	0
Sapugaskanda A	70	32	0	0
Sapugaskanda B	72	63	0	0
Uthura Janani	22	16	0	14
Barge CEB	62	60	0	2
CEB-Hambantota	30	21	0	0
CEB-Mathugama	20	9	0	0
ACE Matara	24	0	0	0
Asia Power	50	0	0	0
KCCPS -2	163	150	0	0
West Coast	270	0	0	0
Nothern Power	36	0	0	0
ACE Embilipitiya	93	0	0	0
Sobadhanavi	220	0	0	0
Total	3,594	2,471	2,000	34,612

Note-

Plant availability is the availability recorded at 6 am on
Installed Capacity is sourced from CEB Annual Report- 2022

May 27, 2024

10. Contribution to the Night Peak in MW

May 26, 2024

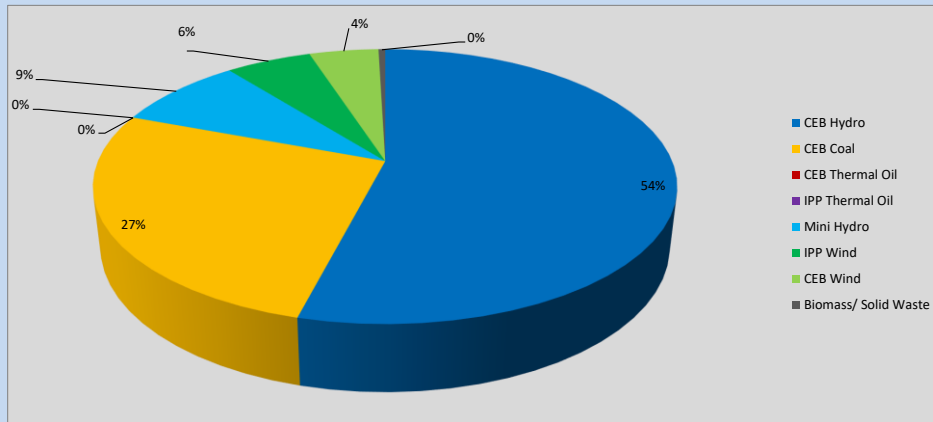


Table 06

CEB Hydro	1093	MW
CEB Coal	539	MW
CEB Thermal Oil	0	MW
IPP Thermal Oil	0	MW
Mini Hydro (Telemetered)	174	MW
IPP Wind	114.4	MW
CEB Wind	92.8	MW
Biomass/ Solid Waste	9	MW

Recorded Peak Demand Data

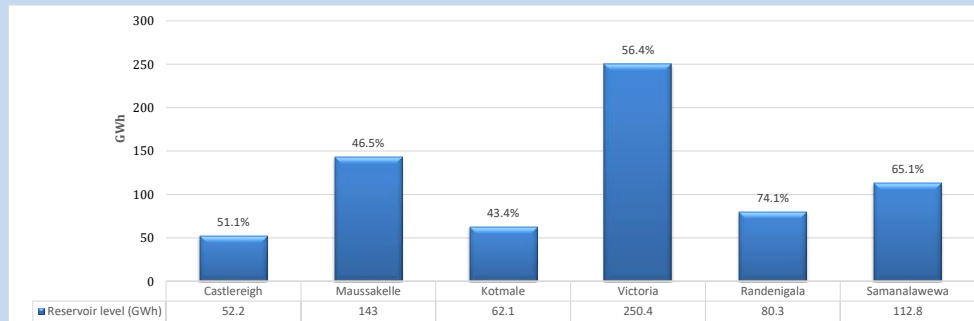
Table 07

Night Peak*	2,022	MW
Day Peak Maximum Demand	1,627	MW
Day Peak Minimum Demand	1,232	MW
Off Peak Minimum Demand	1,206	MW

Above figures are excluding contribution from roof top solar, non telemetered solar and mini hydro plants

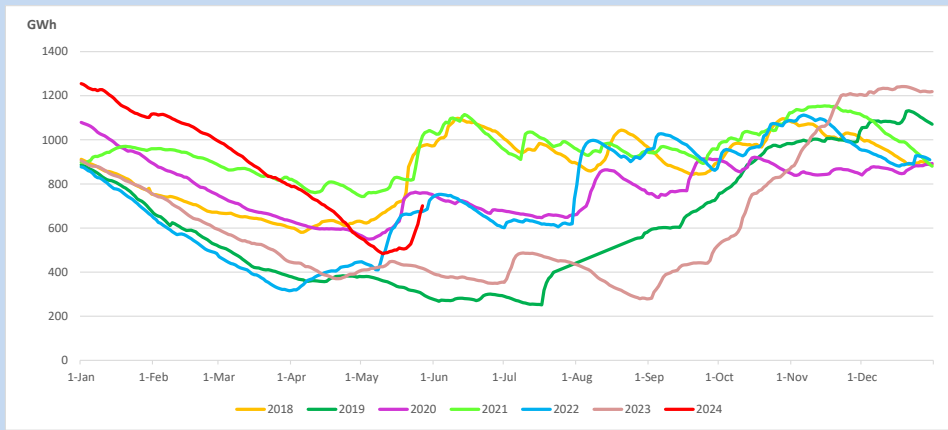
Reservoir Levels -

as at 06.00 Hr on May 27, 2024

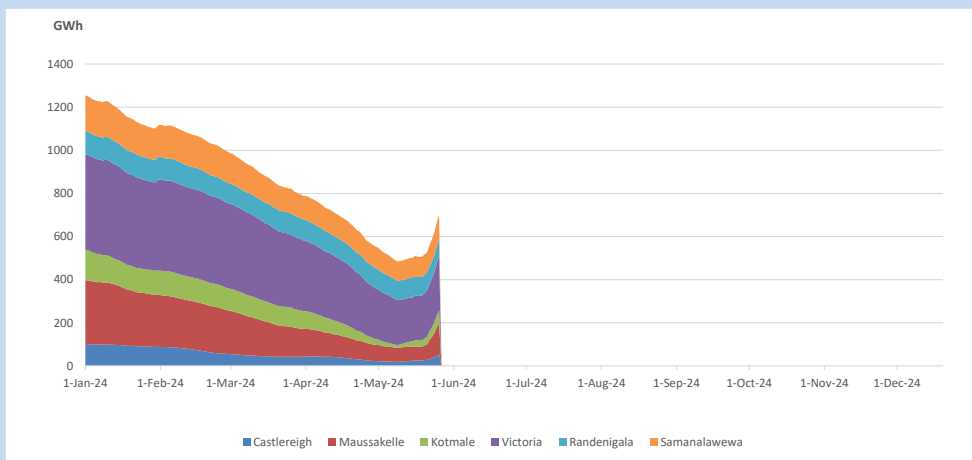


Total Reservoir Level 700.8 GWh
% of Total capacity 54.8%

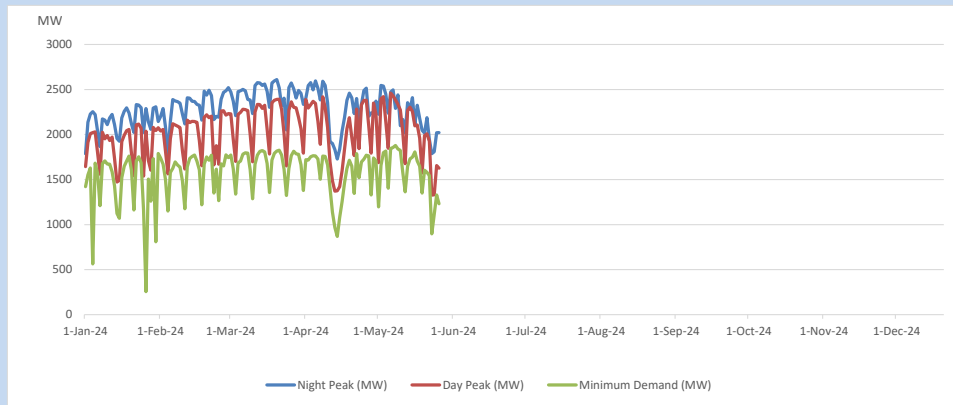
11. Comparison of Total Reservoir Storage Levels with Past Years



12. Variation of Major Hydro Reservoir Levels in the current year (GWh)



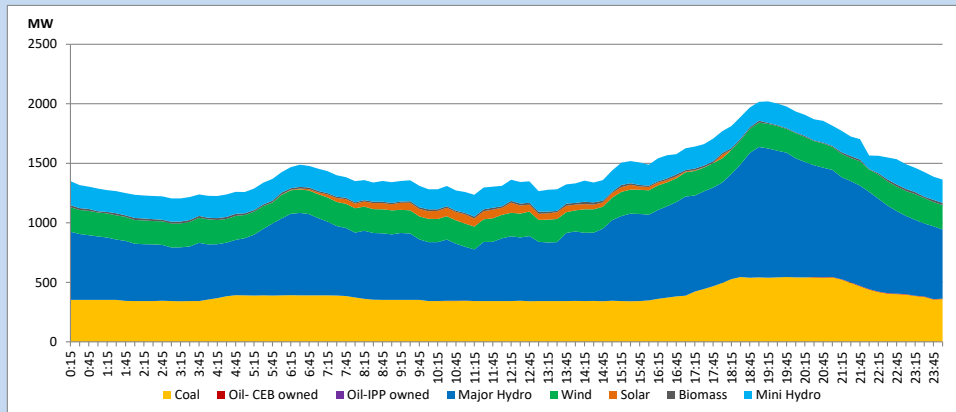
13. Variation of Demand during the current year



The above figures are excluding contribution from roof top solar, non telemetered solar and mini hydro plants

14. Daily Load Curve

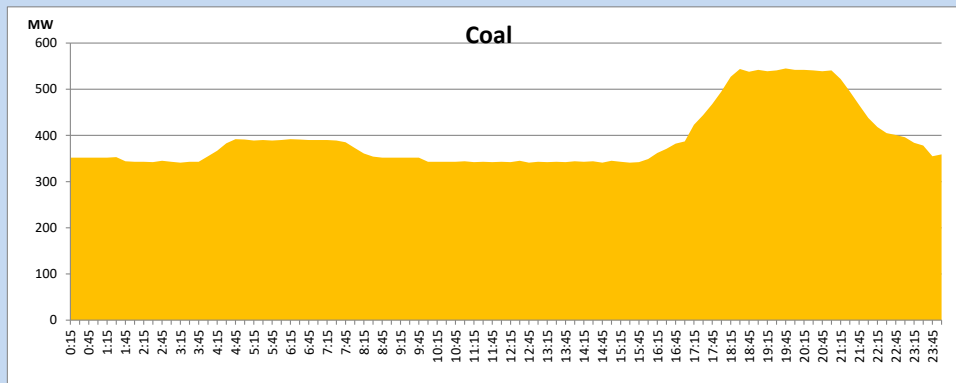
May 26, 2024



Solar and wind data is based on Telemetered Power Stations only

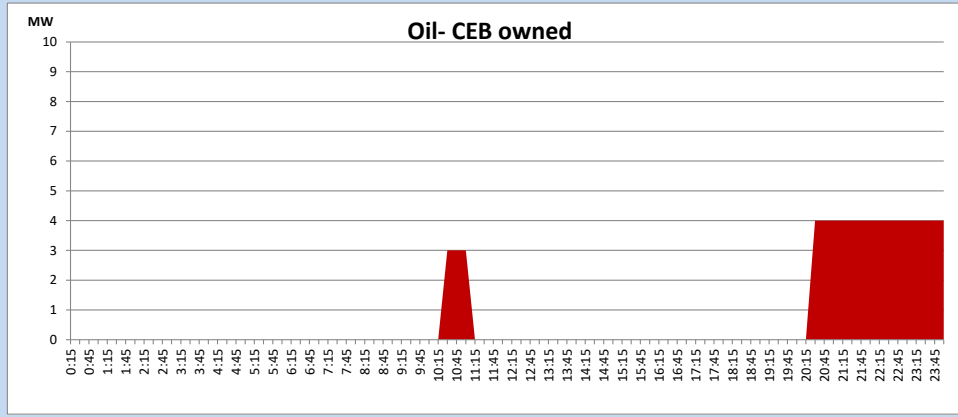
Coal Generation during

May 26, 2024



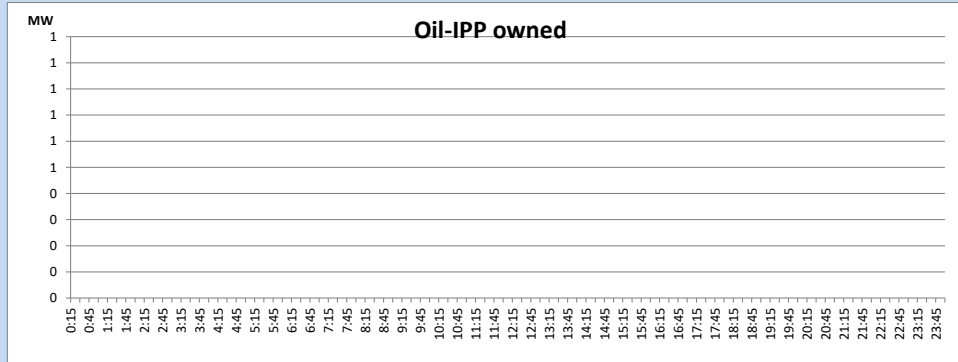
CEB Oil Plant Generation during

May 26, 2024



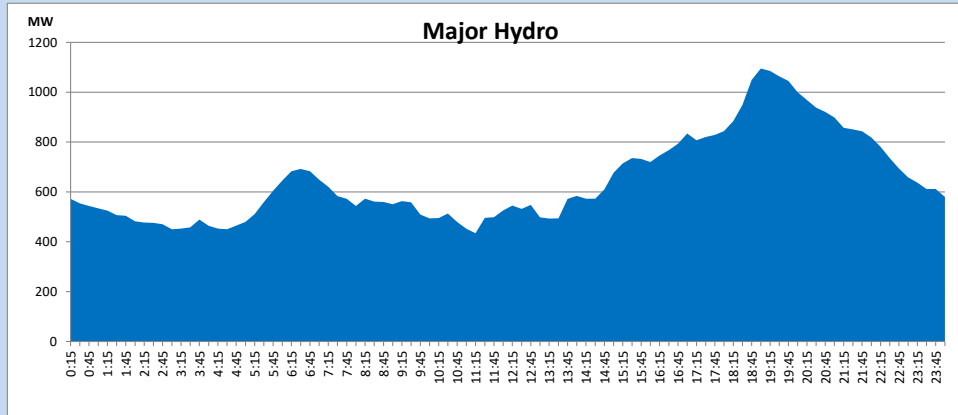
IPP Oil Plant Generation during

May 26, 2024



Major Hydro Generation during

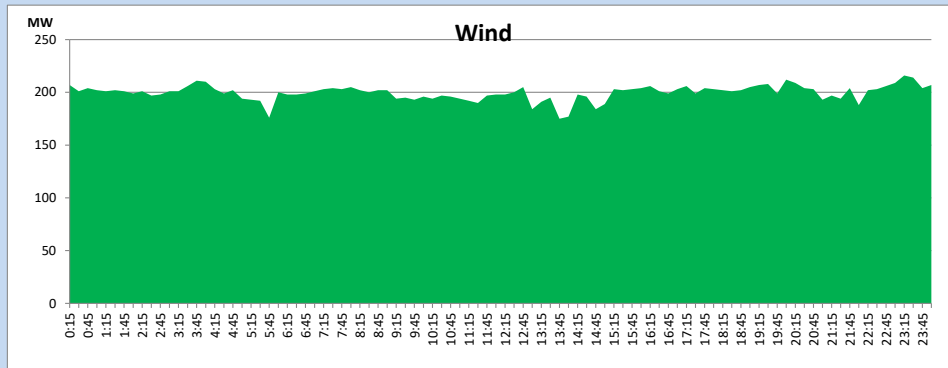
May 26, 2024



Wind Generation during

May 26, 2024

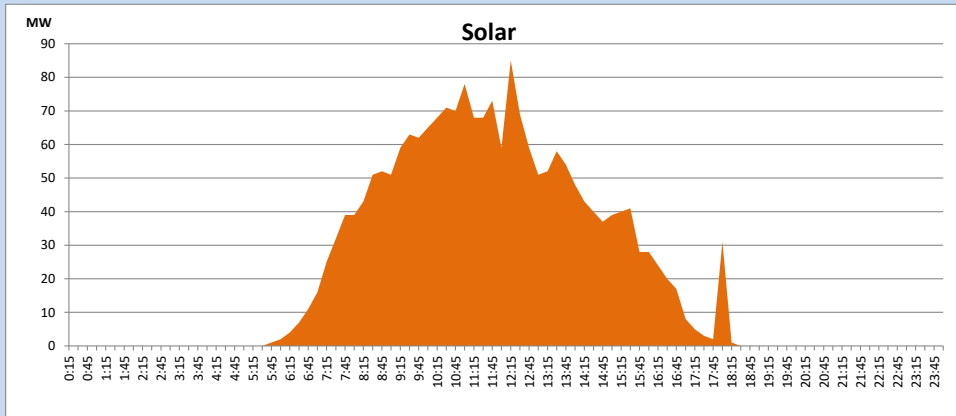
Based on Telemetered Power Stations only



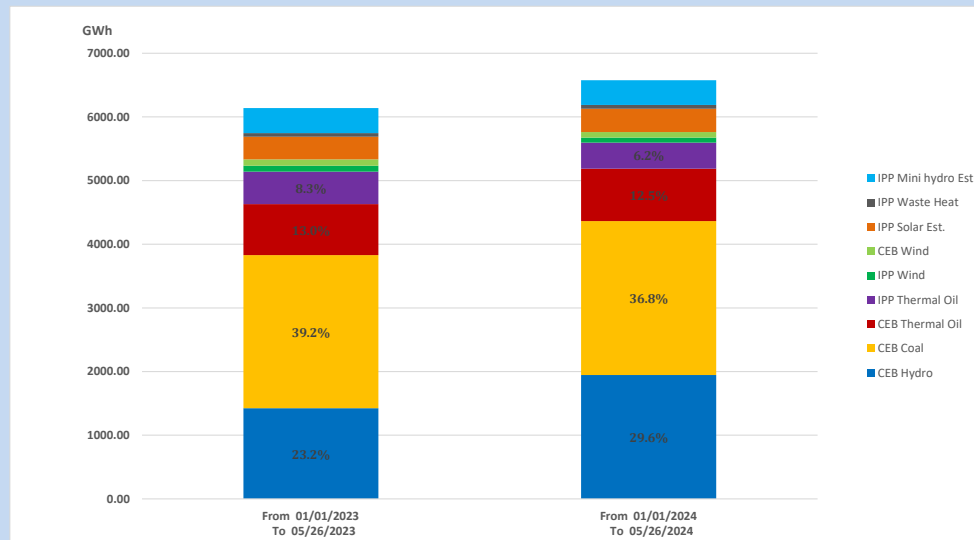
Solar Generation during

May 26, 2024

Based on Telemetered Power Stations only



15. Cumulative Dispatch Comparison with Last Year



Cumulative dispatch
 From 01/01/2023 To 05/26/2023
 From 01/01/2024 To 05/26/2024

6139 GWh
 6577 GWh

The above figures are including contribution from roof top solar, non telemetered solar and mini hydro plants)
 Unused energy due to power cuts has been excluded in 2023

Thermal Plant Fuel types

Table 08

Power Station	Primary Fuel
CEB Thermal	
Sapugaskanda 1	Heavy Fuel
Sapugaskanda 2	Heavy Fuel
Kelanitissa Small Gas Turbines	Auto Diesel
GT 7 - Kelanitissa	Auto Diesel
Kelanitissa CCY	Naphtha or Diesel
Lakvijaya 1	Coal
Lakvijaya 2	Coal
Lakvijaya 3	Coal
Uthuru Janani	Heavy Fuel
Barge CEB	Heavy Fuel
KCCPS -2	Auto Diesel

Power Station	Primary Fuel
Private Thermal	
West Coast	Auto Diesel / Heavy Fuel
Sobadhanavi	Auto Diesel

Major Incidents reported during the day

May 26, 2024

- 1) Power Barge unit 02 made available at 11:17hrs.
- 2) Biyagama 220/132/33kV T/F 01 which was tripped at 01:54hrs, restored at 12:05hrs.
- 3) New Galle - Matara 132kV cct 01 tripped and A/R from both ends at 14:36hrs due to the operation of distance protection.
- 4) Old Anuradhapura 132/33kV T/F 01 tripped from both ends at 16:11hrs due to the operation of E/F and O/C protection. The T/F normalized at 16:48hrs.
- 5) Upper Kotmale pond spilling started at 21:12hrs and continues to the present hour.
- 6) Kukule Ganga pond spilling continues to the present hour.

