

Generation and Reservoirs Statistics

May 25, 2024



PUBLIC UTILITIES COMMISSION OF SRI LANKA

1. Daily Generation Mix in MWh

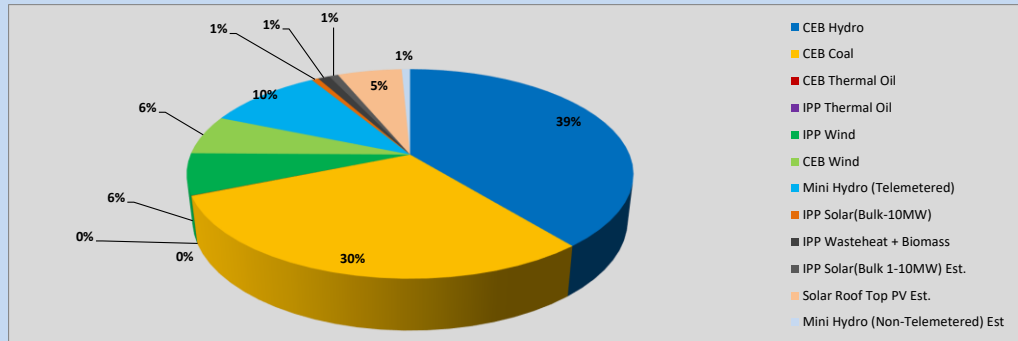


Table 01

	Generation (MWh)
CEB Hydro	14,936
CEB Coal	11,355
CEB Thermal Oil	14
IPP Thermal Oil	-
IPP Wind	2,433
CEB Wind	2,322
Mini Hydro (Telemetered)	3,826
IPP Solar (Bulk)	228
IPP Waste heat + Biomass	384
Total Generation (Excluding estimated figures)	35,498
* Estimated unserved energy	0
* Estimated Mini Hydro (Non telemetered)	276
* Estimated IPP Solar PV (Bulk 1-10MW)	304
* Estimated Solar Roof Top PV	2130
Total Generation (Including estimated figures)	38,208

* Estimated figures of CEB generation report

Table 02

	Installed Capacity (MW)
CEB Hydro	1530
CEB Coal	810
CEB Thermal Oil	773.1
IPP Thermal Oil (West Coast)	270
IPP Wind	148
CEB Wind	100
Mini Hydro	416
IPP Waste heat + Biomass	50
IPP Solar	110
Rooftop Solar (Ordinary)	250
Rooftop Solar (LT Bulk)	234
Rooftop Solar (HT Bulk)	56

Data Source - Monthly Review Report [Jan-2024]

2. Cumulative Dispatch

Following data excludes the contribution from roof top solar, non telemetered solar and mini hydro plants

Table 03 - Current Month

Category	Dispatch (GWh)	
CEB Hydro	289	25.63%
CEB Coal	447	39.62%
CEB Thermal Oil	198	17.58%
IPP Thermal	3	0.26%
SPP Wind	19	1.67%
CEB Wind	20	1.80%
Mini Hydro *	74	6.54%
IPP Solar *	68	6.07%
IPP Waste heat + BMP	9	0.83%
Total	1,128	

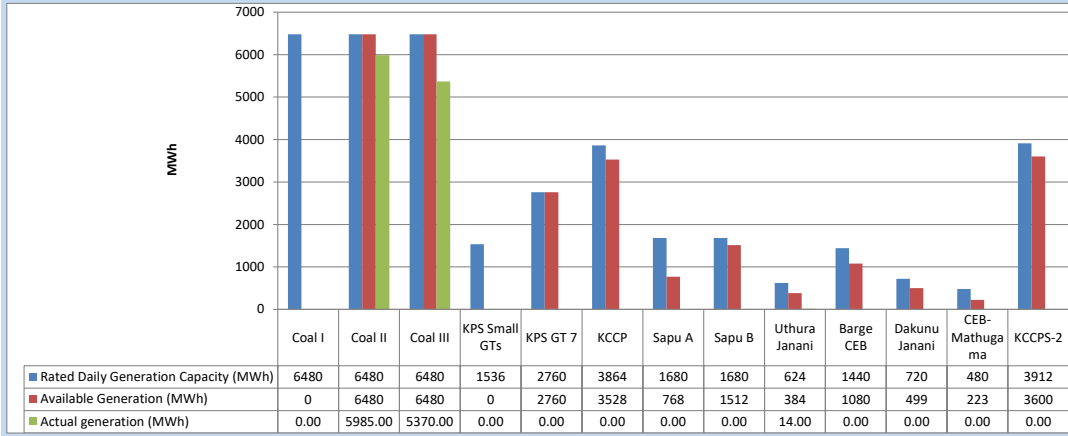
Table 04 - Current Year

Category	Dispatch (GWh)	
CEB Hydro	1,930	29.52%
CEB Coal	2,408	36.82%
CEB Thermal Oil	824	12.60%
IPP Thermal	411	6.28%
SPP Wind	76	1.17%
CEB Wind	84	1.28%
Mini Hydro *	385	5.88%
IPP Solar *	364	5.57%
IPP Waste heat	58	0.89%
Total	6,540	

*Including estimated contribution from non telemetered plants

3. CEB owned Thermal Plant Dispatch

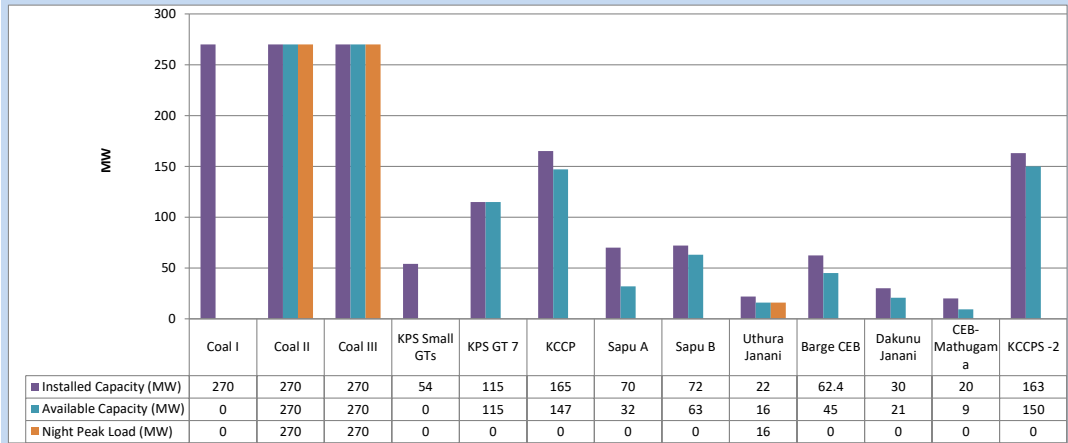
May 25, 2024



Available Generation is estimated based on plant availability at 6.00am on

May 26, 2024

4. CEB owned Thermal Plant Loading at the Night Peak

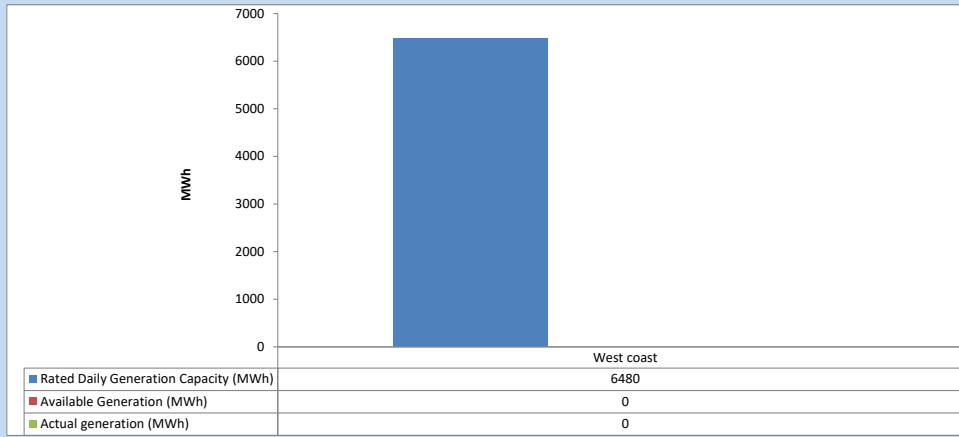


Plant availability is recorded at 6.00 am on

May 26, 2024

5. IPP owned Thermal Plant Dispatch

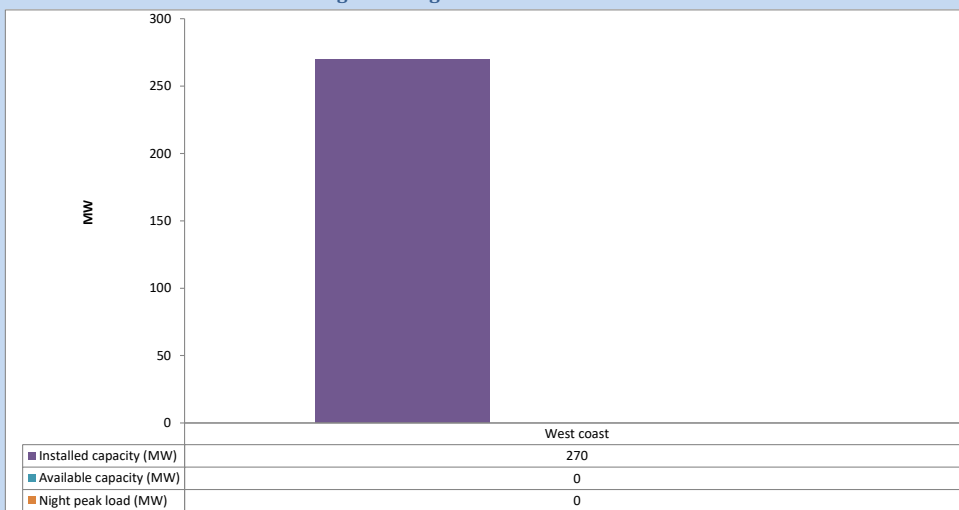
May 25, 2024



Available Generation is estimated based on plant availability at 6.00am on

May 26, 2024

6. IPP owned Thermal Plant Loading at the Night Peak

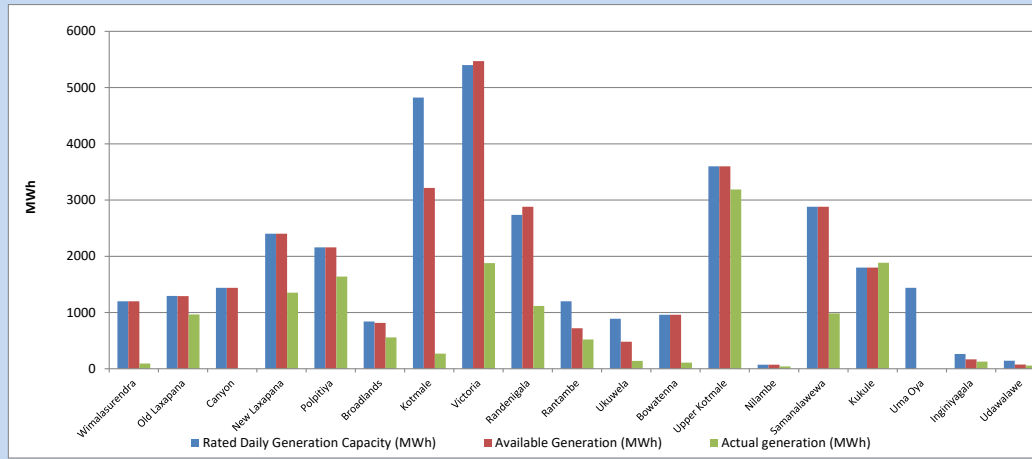


Plant availability is recorded at 6.00 am on

May 26, 2024

7. Major Hydro Plant Dispatch

May 25, 2024

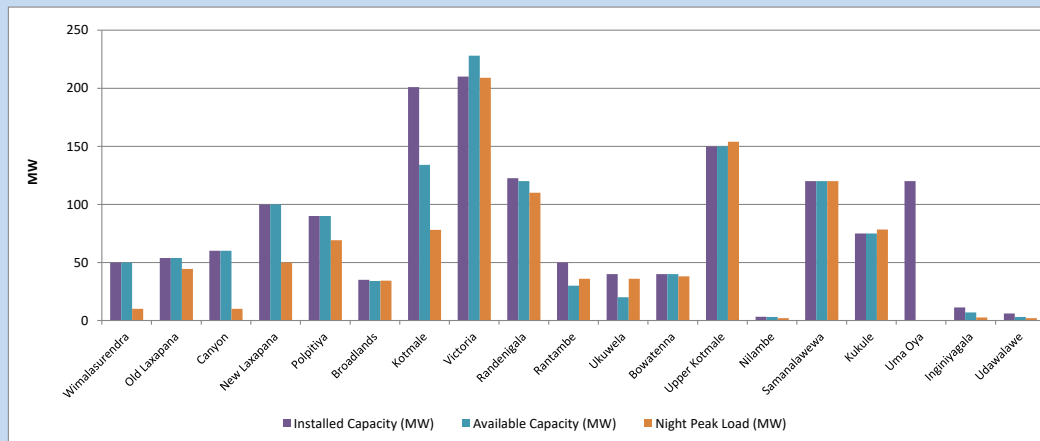


Available Generation is estimated based on plant availability at 6.00am on
Broadlands power plant is operating in the Commissioning Stage

May 26, 2024

8. Major Hydro Plant Loading at Night Peak

May 25, 2024



Plant availability is recorded at 6.00 am on
Broadlands power plant is operating in the Commissioning Stage

May 26, 2024

9. Summary of Major Plant performance

Table 05

Plant	Maximum Available Total Capacity	Plant Availability	Night peak Load	Plant Dispatch
	(MW)	(MW)	(MW)	(MWh)
Wimalasurendra	50	50	10	94
Old Laxapana	54	54	45	965
Canyon	60	60	10	6
New Laxapana	100	100	50	1,354
Polpitiya	90	90	69	1,640
Broadlands	35	34	34	559
Kotmale	201	134	78	270
Victoria	210	228	209	1,880
Randenigala	123	120	110	1,118
Rantambe	50	30	36	522
Ukuwela	40	20	36	139
Bowatenna	40	40	38	110
Upper Kotmale	150	150	154	3,187
Nilambe	3	3	2	40
Samanalawewa	120	120	120	985
Kukule	75	75	78	1,884
Uma Oya (Testing)	120	0	0	0
Inginiyagala	11	7	3	127
Udawalawe	6	3	2	57
Puttalam Coal I	270	0	0	0
Puttalam Coal II	270	270	270	5,985
Puttalam Coal III	270	270	270	5,370
KPS Small GTs	54	0	0	0
KPS GT 7	115	115	0	0
KCCP	165	147	0	0
Sapugaskanda A	70	32	0	0
Sapugaskanda B	72	63	0	0
Uthura Janani	22	16	16	14
Barge CEB	62	45	0	0
CEB-Hambantota	30	21	0	0
CEB-Mathugama	20	9	0	0
ACE Matara	24	0	0	0
Asia Power	50	0	0	0
KCCPS -2	163	150	0	0
West Coast	270	0	0	0
Nothern Power	36	0	0	0
ACE Embilipitiya	93	0	0	0
Sobadhanavi	220	0	0	0
Total	3,594	2,456	2,016	35,499

Note-

Plant availability is the availability recorded at 6 am on
Installed Capacity is sourced from CEB Annual Report- 2022

May 26, 2024

10. Contribution to the Night Peak in MW

May 25, 2024

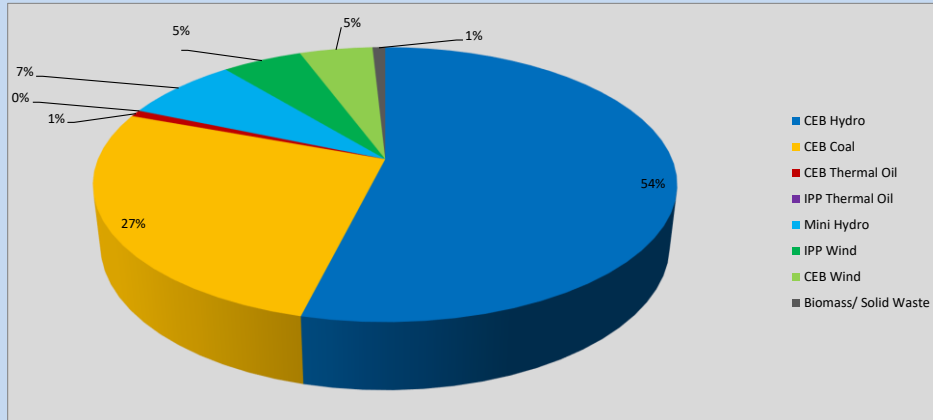


Table 06

CEB Hydro	1088	MW
CEB Coal	540	MW
CEB Thermal Oil	16	MW
IPP Thermal Oil	0	MW
Mini Hydro (Telemetered)	154	MW
IPP Wind	107	MW
CEB Wind	97.6	MW
Biomass/ Solid Waste	17	MW

Recorded Peak Demand Data

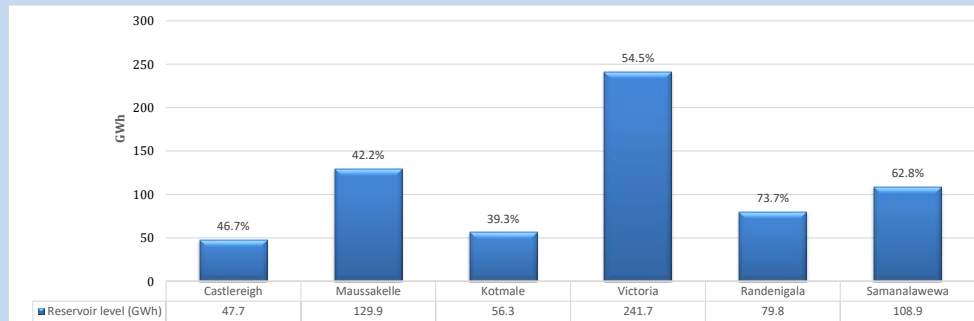
Table 07

Night Peak*	2,020	MW
Day Peak Maximum Demand	1,656	MW
Day Peak Minimum Demand	1,330	MW
Off Peak Minimum Demand	1,109	MW

Above figures are excluding contribution from roof top solar, non telemetered solar and mini hydro plants

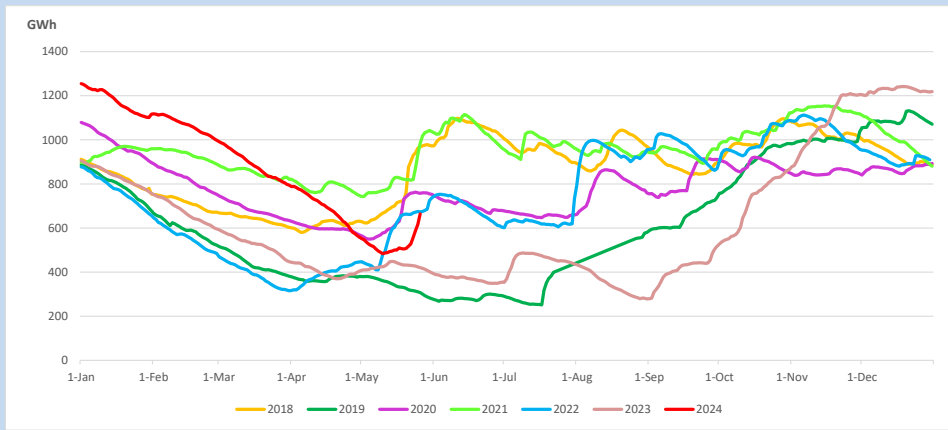
Reservoir Levels -

as at 06.00 Hr on May 26, 2024

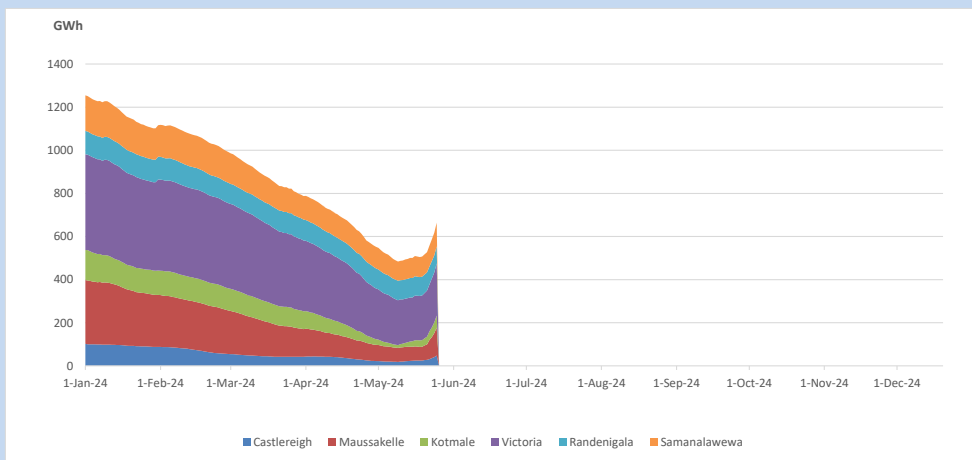


Total Reservoir Level 664.3 GWh
 % of Total capacity 52.0%

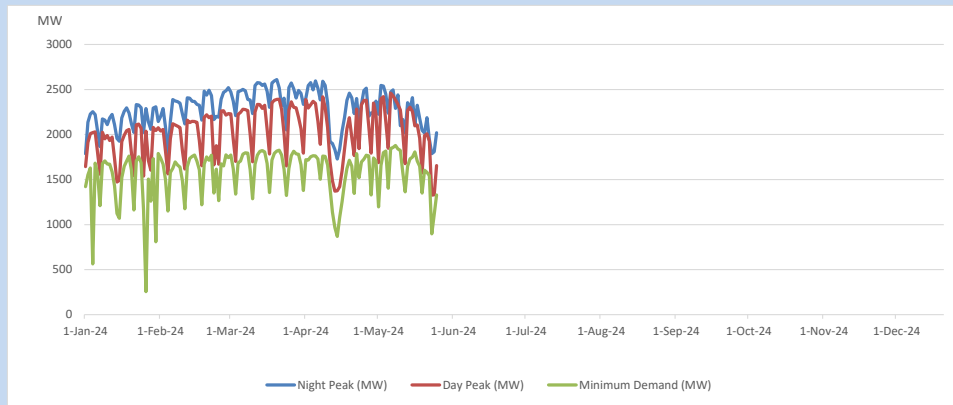
11. Comparison of Total Reservoir Storage Levels with Past Years



12. Variation of Major Hydro Reservoir Levels in the current year (GWh)



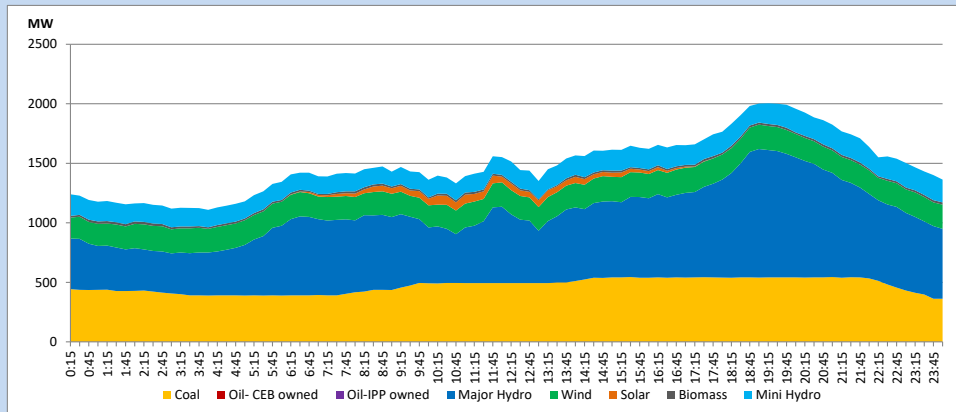
13. Variation of Demand during the current year



The above figures are excluding contribution from roof top solar, non telemetered solar and mini hydro plants

14. Daily Load Curve

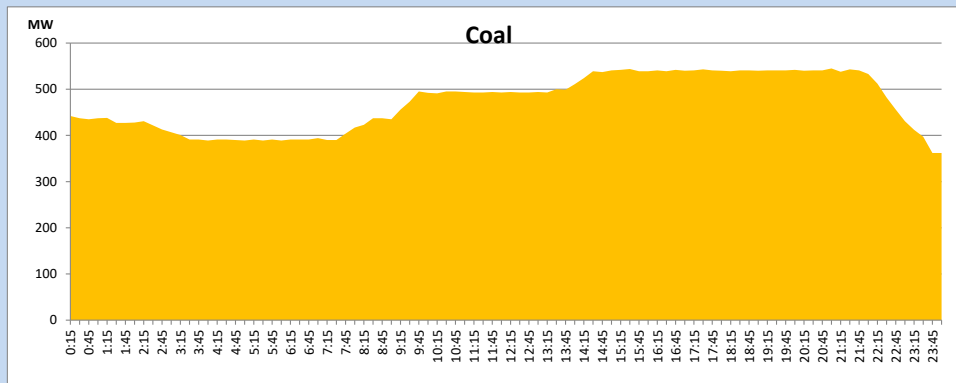
May 25, 2024



Solar and wind data is based on Telemetered Power Stations only

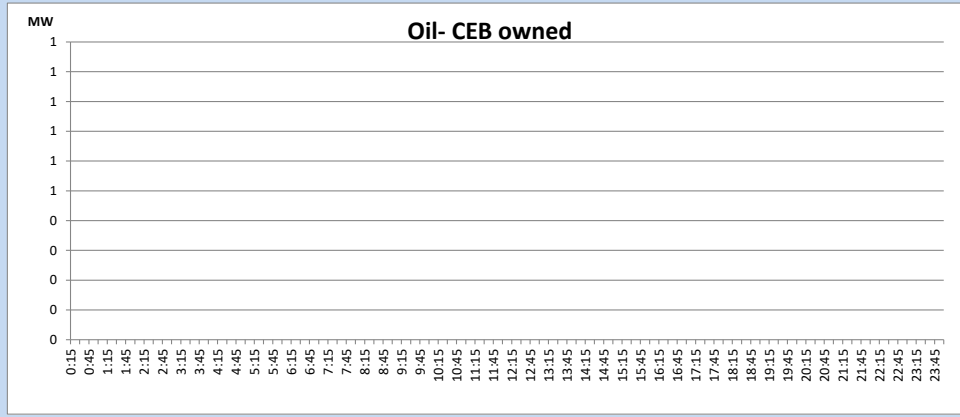
Coal Generation during

May 25, 2024



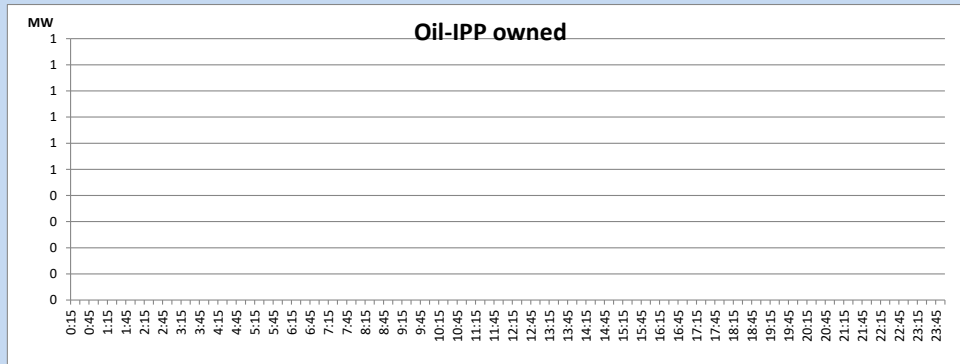
CEB Oil Plant Generation during

May 25, 2024



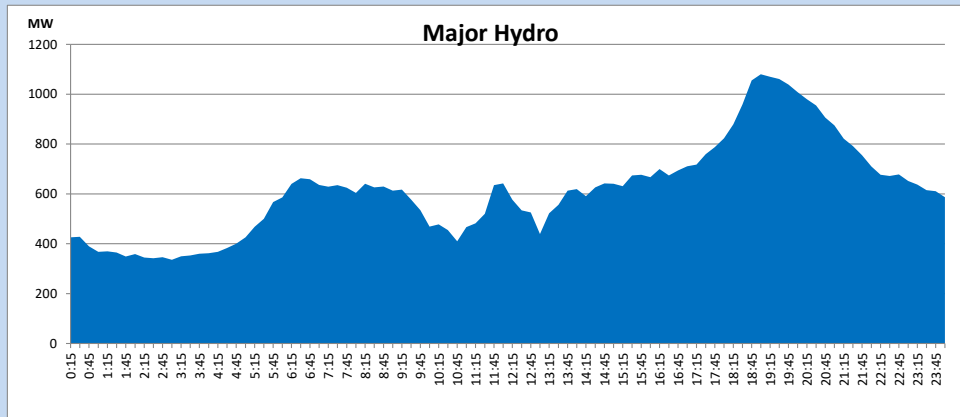
IPP Oil Plant Generation during

May 25, 2024



Major Hydro Generation during

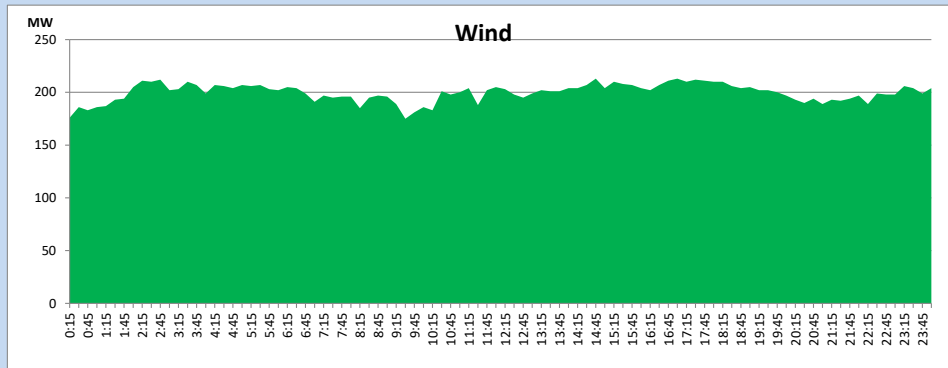
May 25, 2024



Wind Generation during

May 25, 2024

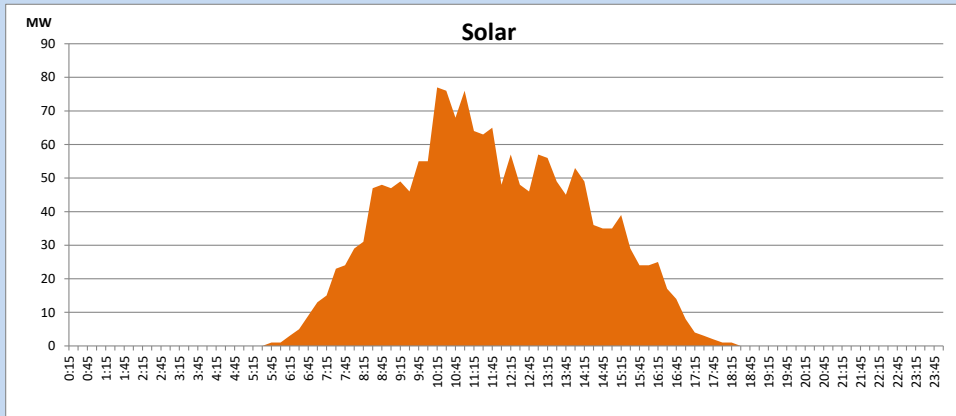
Based on Telemetered Power Stations only



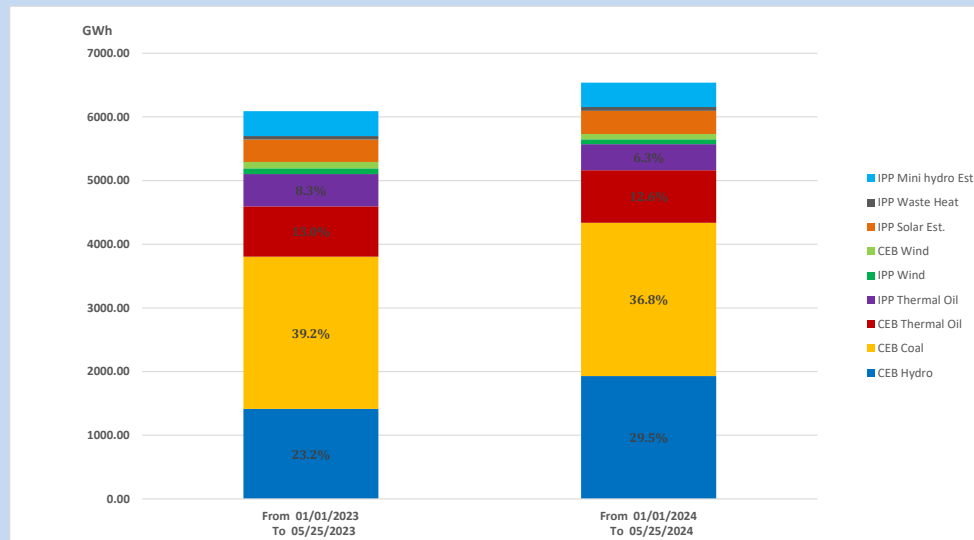
Solar Generation during

May 25, 2024

Based on Telemetered Power Stations only



15. Cumulative Dispatch Comparison with Last Year



Cumulative dispatch

From 01/01/2023 To 05/25/2023

6091 GWh

From 01/01/2024 To 05/25/2024

6540 GWh

The above figures are including contribution from roof top solar, non telemetered solar and mini hydro plants)

Unserviced energy due to power cuts has been excluded in 2023

Thermal Plant Fuel types

Table 08

Power Station	Primary Fuel
CEB Thermal	
Sapugaskanda 1	Heavy Fuel
Sapugaskanda 2	Heavy Fuel
Kelanitissa Small Gas Turbines	Auto Diesel
GT 7 - Kelanitissa	Auto Diesel
Kelanitissa CCY	Naphtha or Diesel
Lakvijaya 1	Coal
Lakvijaya 2	Coal
Lakvijaya 3	Coal
Uthuru Janani	Heavy Fuel
Barge CEB	Heavy Fuel
KCCPS -2	Auto Diesel

Power Station	Primary Fuel
Private Thermal	
West Coast	Auto Diesel / Heavy Fuel
Sobadhanavi	Auto Diesel

Major Incidents reported during the day

May 25, 2024

- 1) Power Barge unit 02 and the attached boiler steam system made unavailable at 18:48hrs due to synchronizing failure. Power Barge unit 02 yet to resume generation.
- 2) Biyagama 220/132/33kV T/F 01 tripped from all ends at 01:54hrs (26.05.2024) due to the operation of PRV. The T/F is yet to be restored.
- 3) Kukule Ganga pond spilling continues to the present hour.

