

Generation and Reservoirs Statistics

May 24, 2024



PUBLIC UTILITIES COMMISSION OF SRI LANKA

1. Daily Generation Mix in MWh

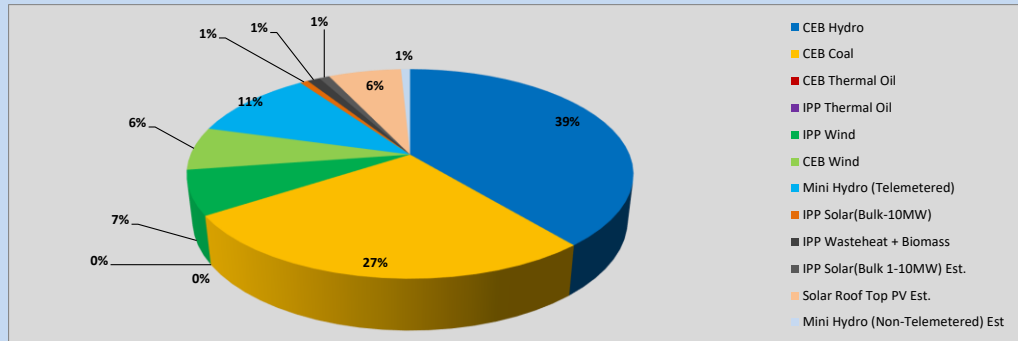


Table 01

	Generation (MWh)
CEB Hydro	13,154
CEB Coal	9,076
CEB Thermal Oil	-
IPP Thermal Oil	-
IPP Wind	2,309
CEB Wind	2,248
Mini Hydro (Telemetered)	3,677
IPP Solar (Bulk)	238
IPP Waste heat + Biomass	366
Total Generation (Excluding estimated figures)	31,068
* Estimated unserved energy	0
* Estimated Mini Hydro (Non telemetered)	265
* Estimated IPP Solar PV (Bulk 1-10MW)	304
* Estimated Solar Roof Top PV	2130
Total Generation (Including estimated figures)	33,767

* Estimated figures of CEB generation report

Table 02

	Installed Capacity (MW)
CEB Hydro	1530
CEB Coal	810
CEB Thermal Oil	773.1
IPP Thermal Oil (West Coast)	270
IPP Wind	148
CEB Wind	100
Mini Hydro	416
IPP Waste heat + Biomass	50
IPP Solar	110
Rooftop Solar (Ordinary)	250
Rooftop Solar (LT Bulk)	234
Rooftop Solar (HT Bulk)	56

Data Source - Monthly Review Report [Jan-2024]

2. Cumulative Dispatch

Following data excludes the contribution from roof top solar, non telemetered solar and mini hydro plants

Table 03 - Current Month

Category	Dispatch (GWh)	
CEB Hydro	274	25.16%
CEB Coal	436	39.97%
CEB Thermal Oil	198	18.20%
IPP Thermal	3	0.27%
SPP Wind	16	1.51%
CEB Wind	18	1.65%
Mini Hydro *	70	6.39%
IPP Solar *	66	6.04%
IPP Waste heat + BMP	9	0.82%
Total	1,090	

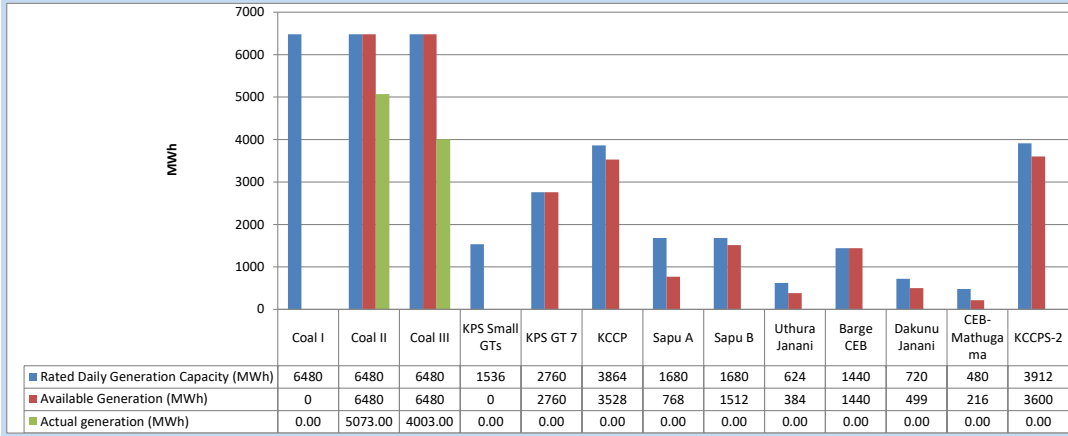
Table 04 - Current Year

Category	Dispatch (GWh)	
CEB Hydro	1,915	29.46%
CEB Coal	2,396	36.86%
CEB Thermal Oil	824	12.67%
IPP Thermal	411	6.32%
SPP Wind	74	1.14%
CEB Wind	81	1.25%
Mini Hydro *	380	5.85%
IPP Solar *	362	5.56%
IPP Waste heat	58	0.89%
Total	6,501	

*Including estimated contribution from non telemetered plants

3. CEB owned Thermal Plant Dispatch

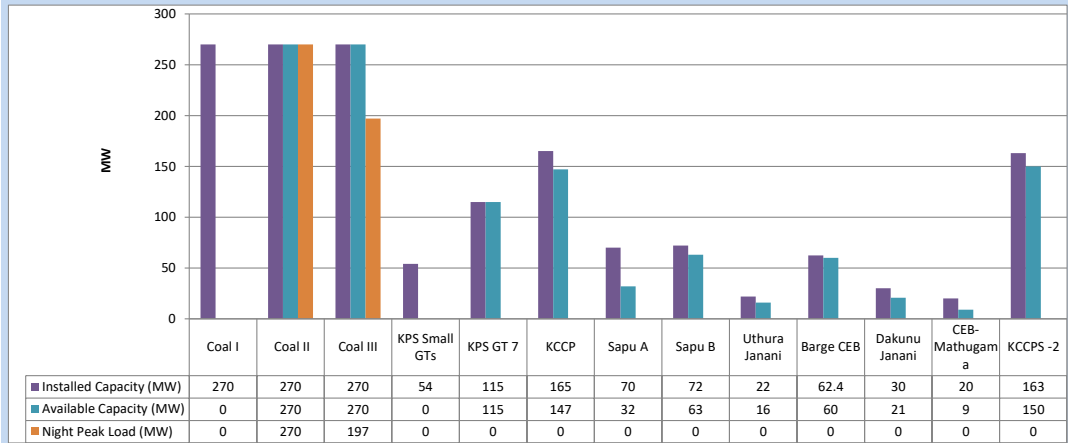
May 24, 2024



Available Generation is estimated based on plant availability at 6.00am on

May 25, 2024

4. CEB owned Thermal Plant Loading at the Night Peak

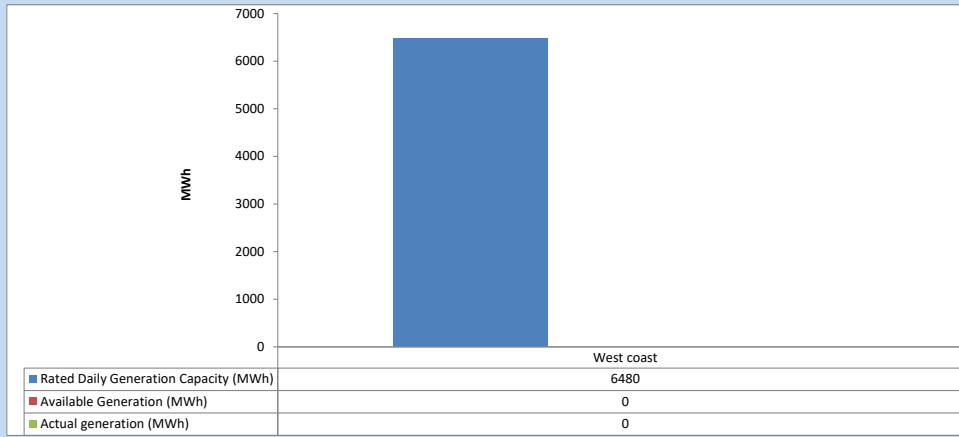


Plant availability is recorded at 6.00 am on

May 25, 2024

5. IPP owned Thermal Plant Dispatch

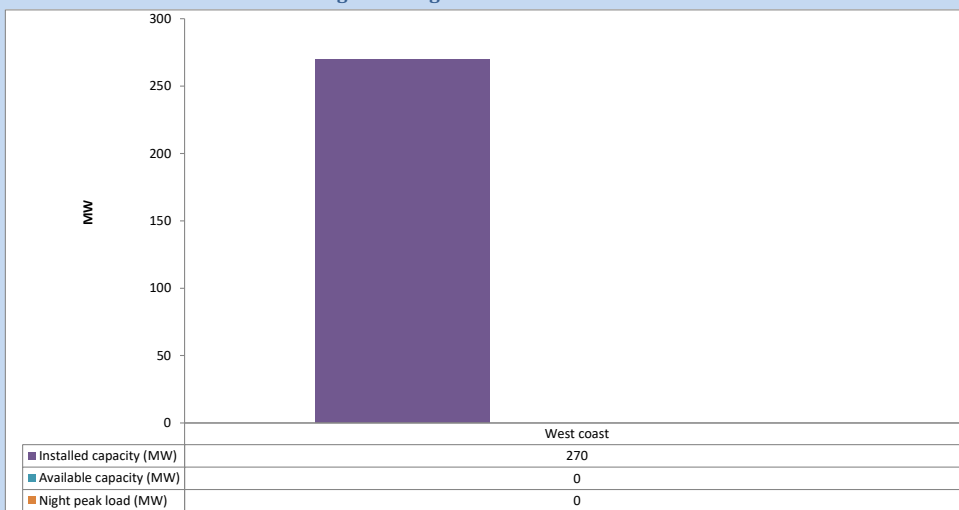
May 24, 2024



Available Generation is estimated based on plant availability at 6.00am on

May 25, 2024

6. IPP owned Thermal Plant Loading at the Night Peak

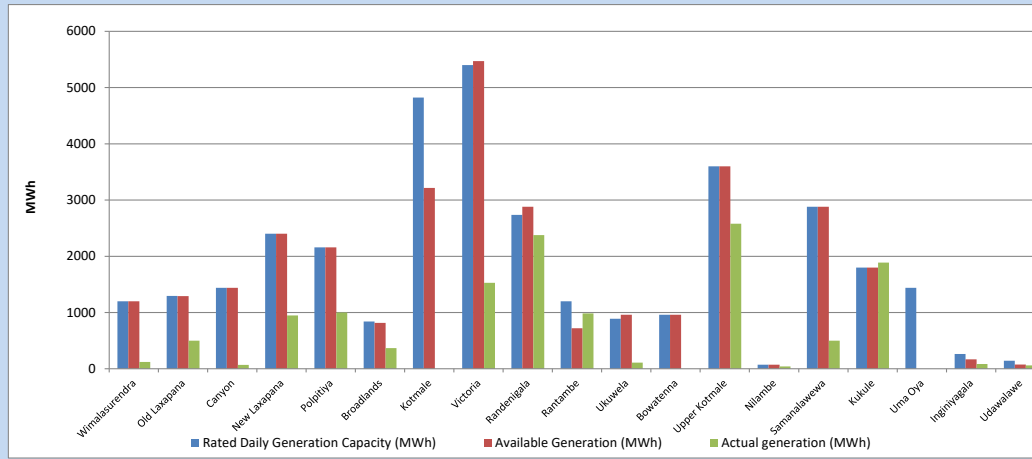


Plant availability is recorded at 6.00 am on

May 25, 2024

7. Major Hydro Plant Dispatch

May 24, 2024

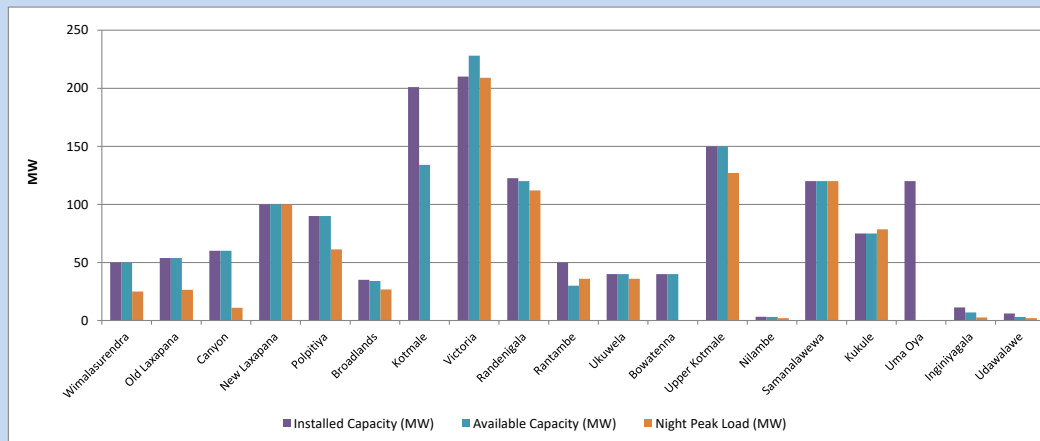


Available Generation is estimated based on plant availability at 6.00am on
Broadlands power plant is operating in the Commissioning Stage

May 25, 2024

8. Major Hydro Plant Loading at Night Peak

May 24, 2024



Plant availability is recorded at 6.00 am on
Broadlands power plant is operating in the Commissioning Stage

May 25, 2024

9. Summary of Major Plant performance

Table 05

Plant	Maximum Available Total Capacity	Plant Availability	Night peak Load	Plant Dispatch
	(MW)	(MW)	(MW)	(MWh)
Wimalasurendra	50	50	25	122
Old Laxapana	54	54	27	500
Canyon	60	60	11	70
New Laxapana	100	100	100	948
Polpitiya	90	90	61	1,000
Broadlands	35	34	27	368
Kotmale	201	134	0	0
Victoria	210	228	209	1,528
Randenigala	123	120	112	2,376
Rantambe	50	30	36	986
Ukuwela	40	40	36	109
Bowatenna	40	40	0	0
Upper Kotmale	150	150	127	2,578
Nilambe	3	3	2	40
Samanalawewa	120	120	120	499
Kukule	75	75	79	1,887
Uma Oya (Testing)	120	0	0	0
Inginiyagala	11	7	3	83
Udawalawe	6	3	2	61
Puttalam Coal I	270	0	0	0
Puttalam Coal II	270	270	270	5,073
Puttalam Coal III	270	270	197	4,003
KPS Small GTs	54	0	0	0
KPS GT 7	115	115	0	0
KCCP	165	147	0	0
Sapugaskanda A	70	32	0	0
Sapugaskanda B	72	63	0	0
Uthura Janani	22	16	0	0
Barge CEB	62	60	0	0
CEB-Hambantota	30	21	0	0
CEB-Mathugama	20	9	0	0
ACE Matara	24	0	0	0
Asia Power	50	0	0	0
KCCPS -2	163	150	0	0
West Coast	270	0	0	0
Nothern Power	36	0	0	0
ACE Embilipitiya	93	0	0	0
Sobadhanavi	220	0	0	0
Total	3,594	2,491	1,796	31,069

Note-

Plant availability is the availability recorded at 6 am on
Installed Capacity is sourced from CEB Annual Report- 2022

May 25, 2024

10. Contribution to the Night Peak in MW

May 24, 2024

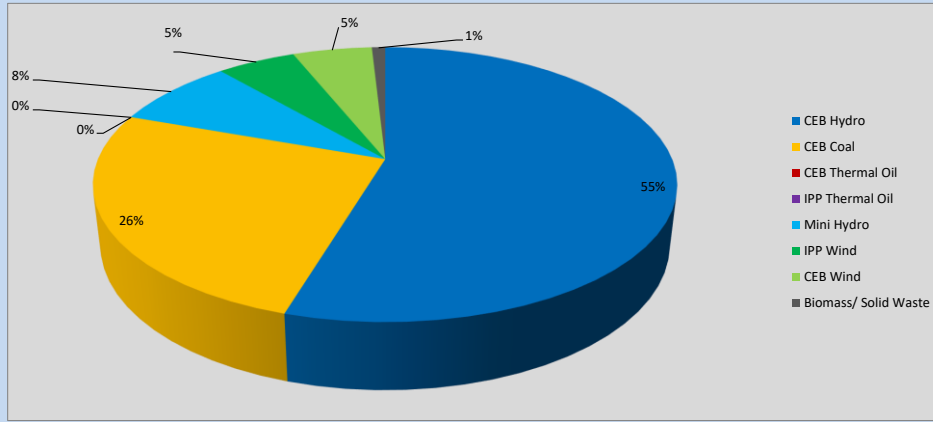


Table 06

CEB Hydro	989	MW
CEB Coal	467	MW
CEB Thermal Oil	0	MW
IPP Thermal Oil	0	MW
Mini Hydro (Telemetered)	148	MW
IPP Wind	94.3	MW
CEB Wind	95	MW
Biomass/ Solid Waste	16	MW

Recorded Peak Demand Data

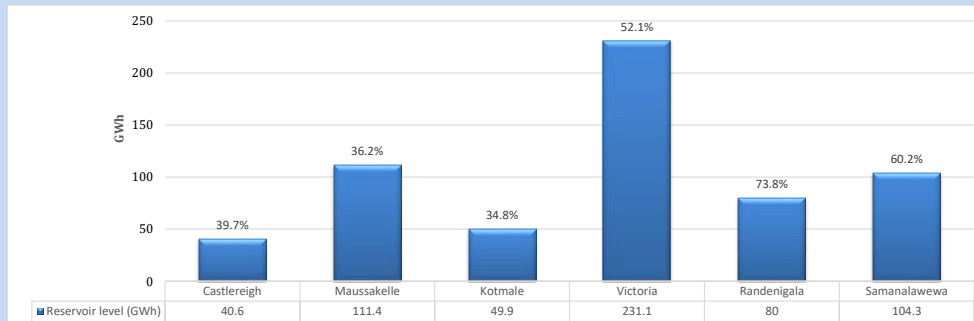
Table 07

Night Peak*	1,810	MW
Day Peak Maximum Demand	1,331	MW
Day Peak Minimum Demand	1,112	MW
Off Peak Minimum Demand	1,126	MW

Above figures are excluding contribution from roof top solar, non telemetered solar and mini hydro plants

Reservoir Levels -

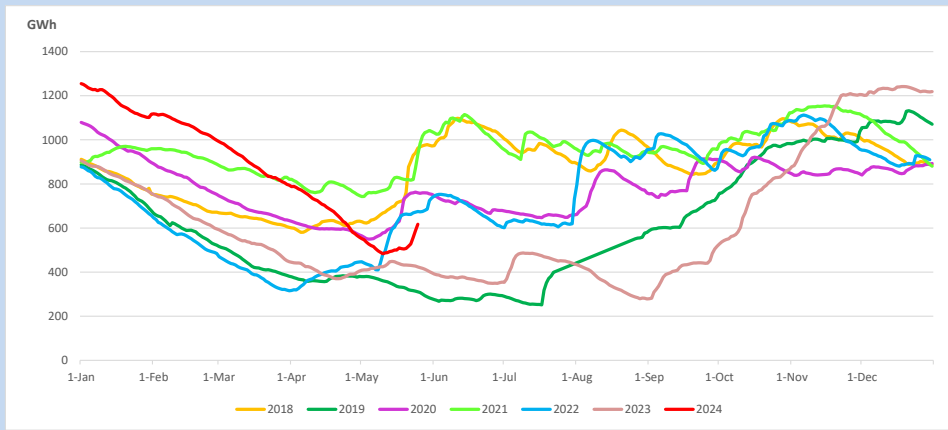
as at 06.00 Hr on May 25, 2024



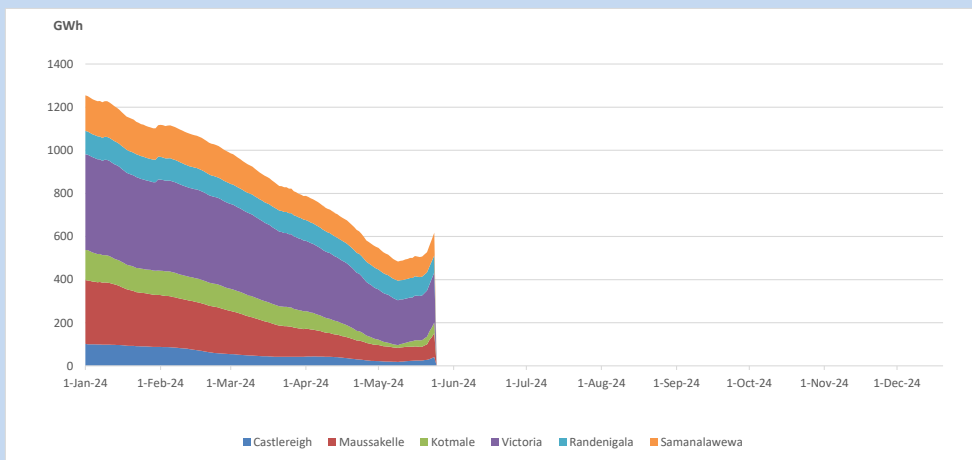
Total Reservoir Level
% of Total capacity

617.3 GWh
48.3%

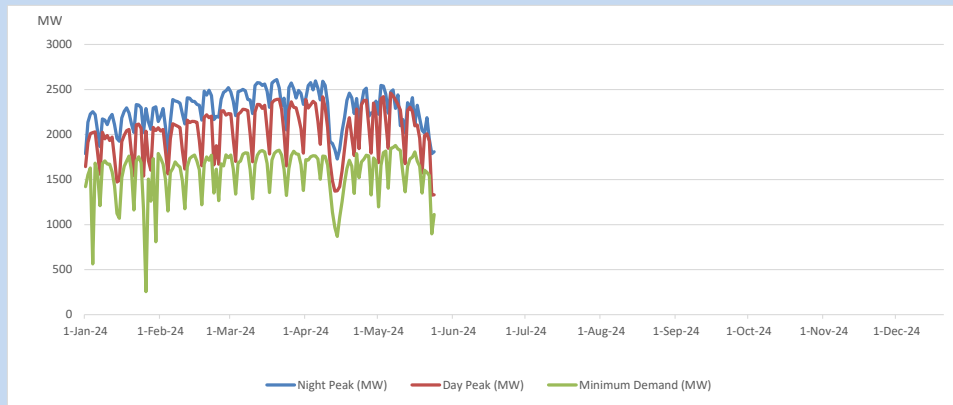
11. Comparison of Total Reservoir Storage Levels with Past Years



12. Variation of Major Hydro Reservoir Levels in the current year (GWh)



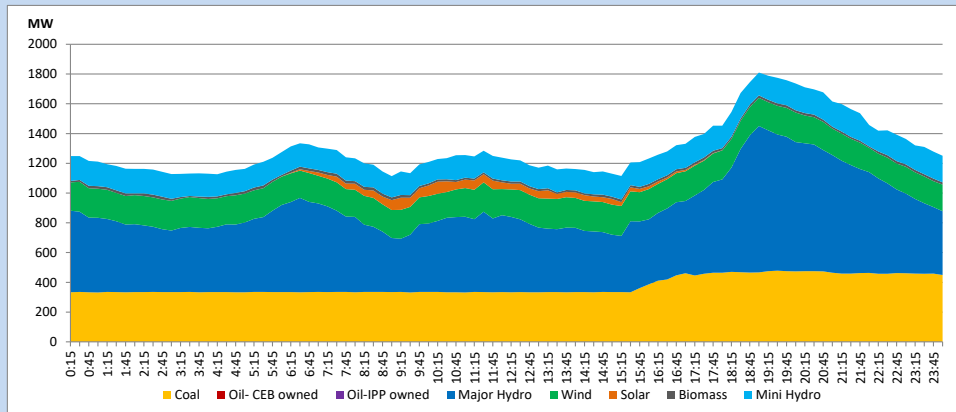
13. Variation of Demand during the current year



The above figures are excluding contribution from roof top solar, non telemetered solar and mini hydro plants

14. Daily Load Curve

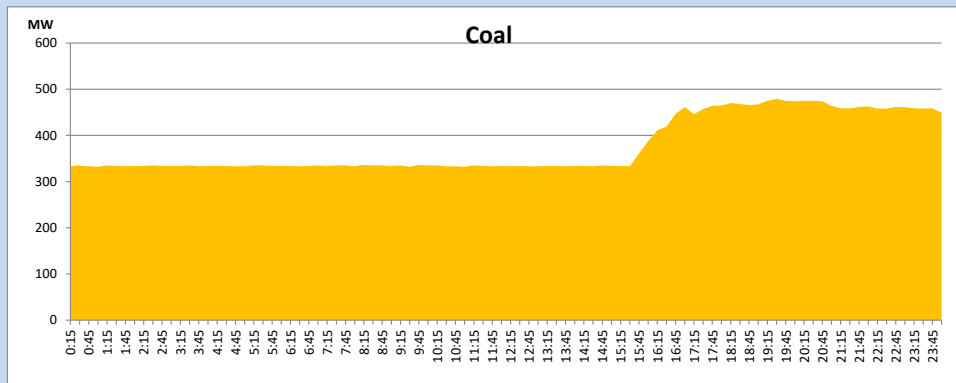
May 24, 2024



Solar and wind data is based on Telemetered Power Stations only

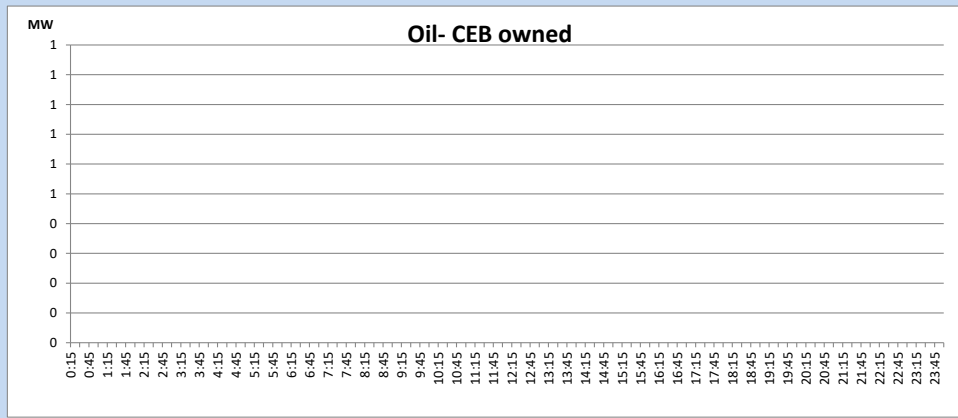
Coal Generation during

May 24, 2024



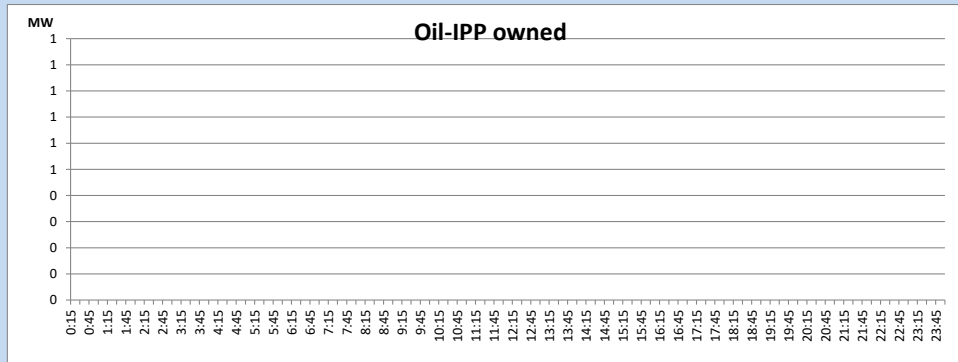
CEB Oil Plant Generation during

May 24, 2024



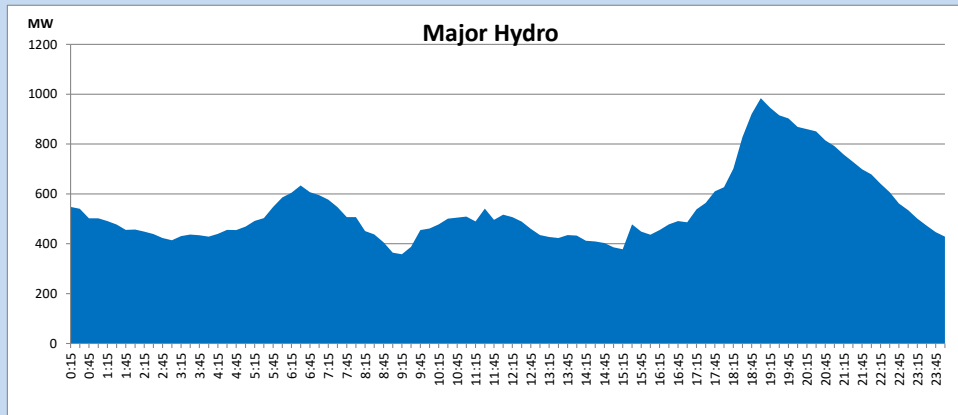
IPP Oil Plant Generation during

May 24, 2024



Major Hydro Generation during

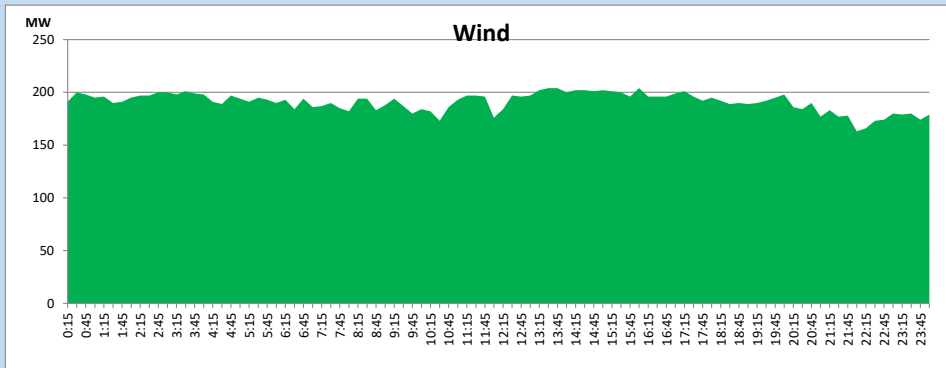
May 24, 2024



Wind Generation during

May 24, 2024

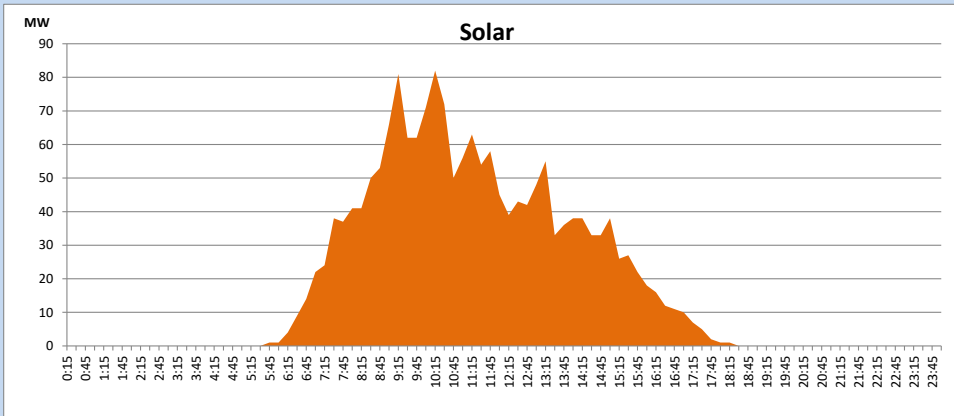
Based on Telemetered Power Stations only



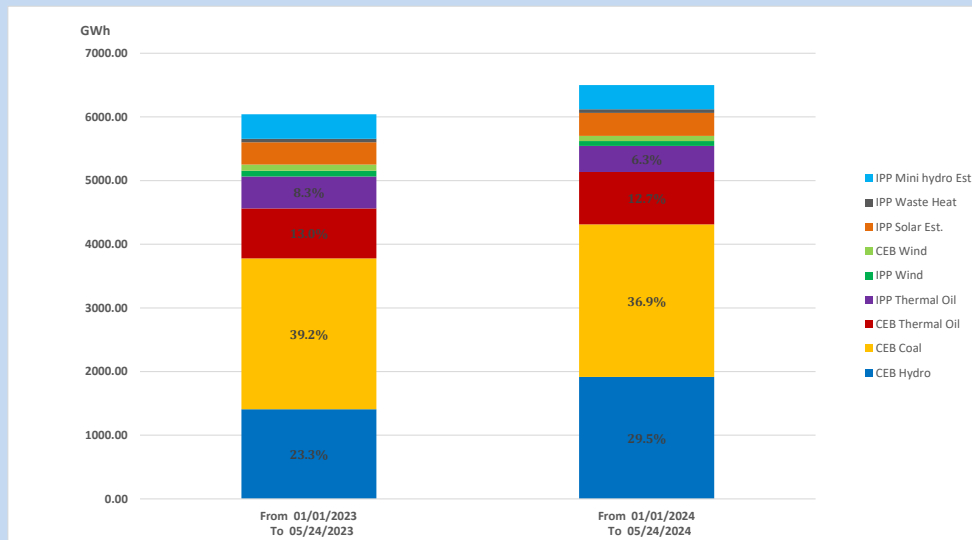
Solar Generation during

May 24, 2024

Based on Telemetered Power Stations only



15. Cumulative Dispatch Comparison with Last Year



Cumulative dispatch
 From 01/01/2023 To 05/24/2023
 From 01/01/2024 To 05/24/2024

6043 GWh
 6501 GWh

The above figures are including contribution from roof top solar, non telemetered solar and mini hydro plants)
 Unused energy due to power cuts has been excluded in 2023

Thermal Plant Fuel types

Table 08

Power Station	Primary Fuel
CEB Thermal	
Sapugaskanda 1	Heavy Fuel
Sapugaskanda 2	Heavy Fuel
Kelanitissa Small Gas Turbines	Auto Diesel
GT 7 - Kelanitissa	Auto Diesel
Kelanitissa CCY	Naphtha or Diesel
Lakvijaya 1	Coal
Lakvijaya 2	Coal
Lakvijaya 3	Coal
Uthuru Janani	Heavy Fuel
Barge CEB	Heavy Fuel
KCCPS -2	Auto Diesel

Power Station	Primary Fuel
Private Thermal	
West Coast	Auto Diesel / Heavy Fuel
Sobadhanavi	Auto Diesel

Major Incidents reported during the day

May 24, 2024

- 1) Kotmale unit 03, which was made unavailable at 1:57hrs, made available at 00:20hrs (25/05/2024).
- 2) Kukule Ganga pond spilling continues to the present hour.

