

# Generation and Reservoirs Statistics

June 22, 2024



PUBLIC UTILITIES COMMISSION OF SRI LANKA

## 1. Daily Generation Mix in MWh

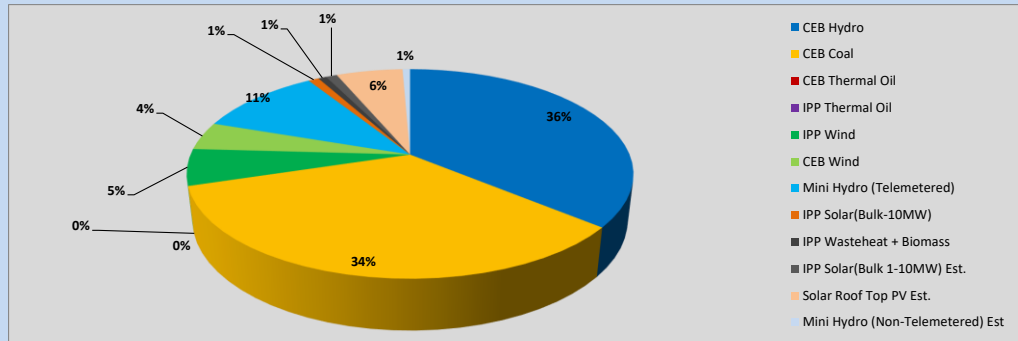


Table 01

	Generation (MWh)
CEB Hydro	14,507
CEB Coal	13,829
CEB Thermal Oil	-
IPP Thermal Oil	-
IPP Wind	2,271
CEB Wind	1,750
Mini Hydro (Telemetered)	4,352
IPP Solar (Bulk)	368
IPP Waste heat + Biomass	283
<b>Total Generation (Excluding estimated figures)</b>	<b>37,360</b>
* Estimated unserved energy	0
* Estimated Mini Hydro (Non telemetered)	262
* Estimated IPP Solar PV (Bulk 1-10MW)	391
* Estimated Solar Roof Top PV	2320
<b>Total Generation (Including estimated figures)</b>	<b>40,333</b>

\* Estimated figures of CEB generation report

Table 02

	Installed Capacity (MW)
CEB Hydro	1533
CEB Coal	810
CEB Thermal Oil	773.1
IPP Thermal Oil (West Coast)	490
IPP Wind	163
CEB Wind	100
Mini Hydro	422
IPP Waste heat + Biomass	54
IPP Solar	137
Rooftop Solar (Ordinary)	326
Rooftop Solar (LT Bulk)	285
Rooftop Solar (HT Bulk)	79

Data Source - Monthly Review Report [Jan-2024]

## 2. Cumulative Dispatch

Following data excludes the contribution from roof top solar, non telemetered solar and mini hydro plants

Table 03 - Current Month

Category	Dispatch (GWh)	
CEB Hydro	339	34.39%
CEB Coal	351	35.51%
CEB Thermal Oil	33	3.31%
IPP Thermal	14	1.37%
SPP Wind	42	4.23%
CEB Wind	45	4.57%
Mini Hydro *	93	9.37%
IPP Solar *	66	6.68%
IPP Waste heat + BMP	6	0.59%
<b>Total</b>	<b>987</b>	

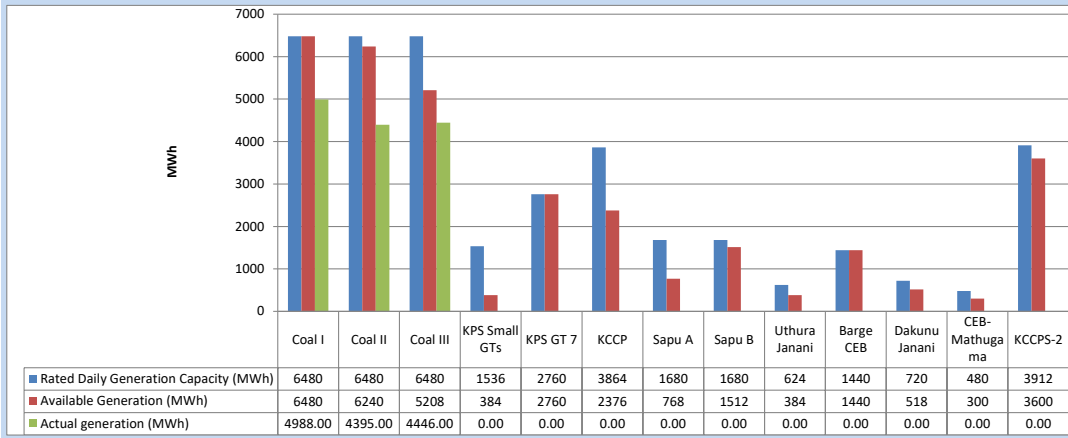
Table 04 - Current Year

Category	Dispatch (GWh)	
CEB Hydro	2,379	30.34%
CEB Coal	2,886	36.81%
CEB Thermal Oil	811	10.35%
IPP Thermal	431	5.49%
SPP Wind	133	1.69%
CEB Wind	139	1.77%
Mini Hydro *	524	6.69%
IPP Solar *	467	5.96%
IPP Waste heat	70	0.90%
<b>Total</b>	<b>7,840</b>	

\*Including estimated contribution from non telemetered plants

### 3. CEB owned Thermal Plant Dispatch

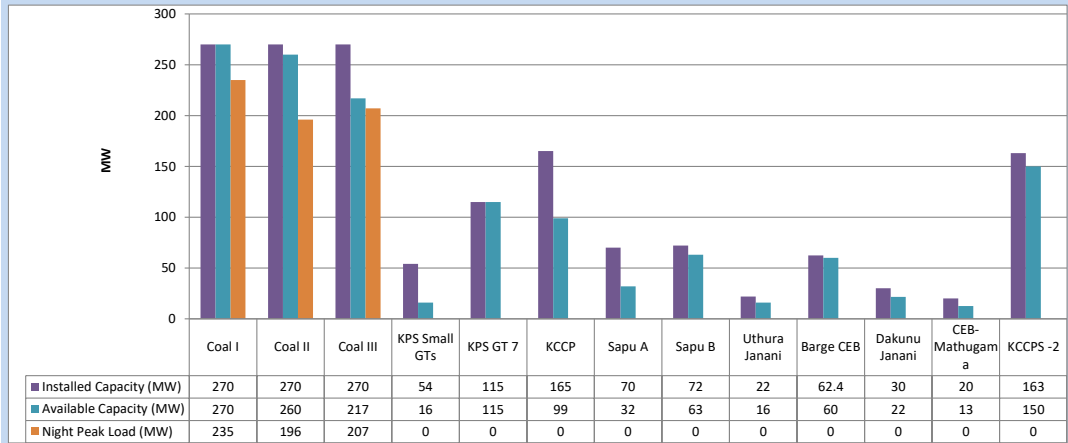
June 22, 2024



Available Generation is estimated based on plant availability at 6.00am on

June 23, 2024

### 4. CEB owned Thermal Plant Loading at the Night Peak

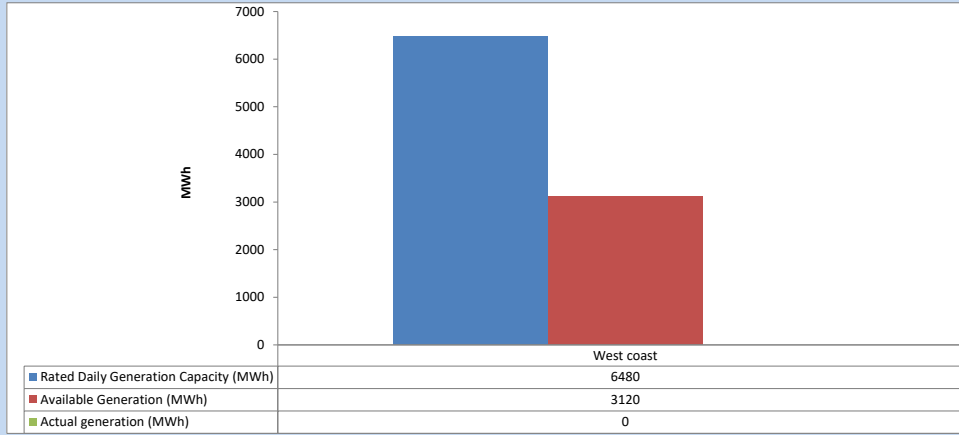


Plant availability is recorded at 6.00 am on

June 23, 2024

### 5. IPP owned Thermal Plant Dispatch

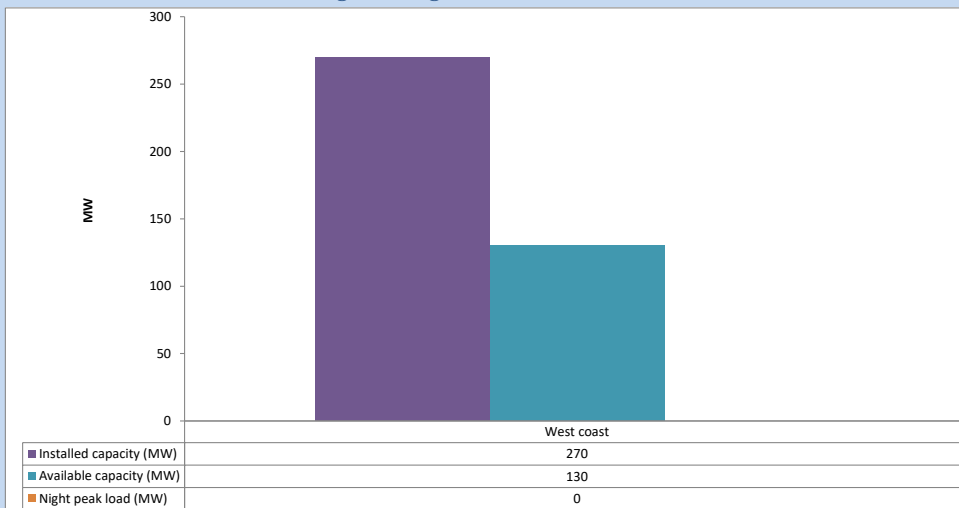
June 22, 2024



Available Generation is estimated based on plant availability at 6.00am on

June 23, 2024

### 6. IPP owned Thermal Plant Loading at the Night Peak

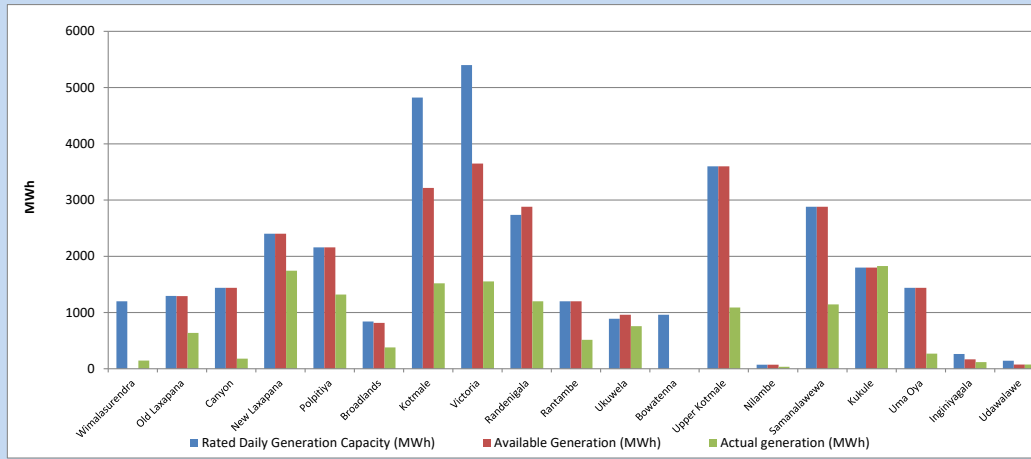


Plant availability is recorded at 6.00 am on

June 23, 2024

## 7. Major Hydro Plant Dispatch

June 22, 2024

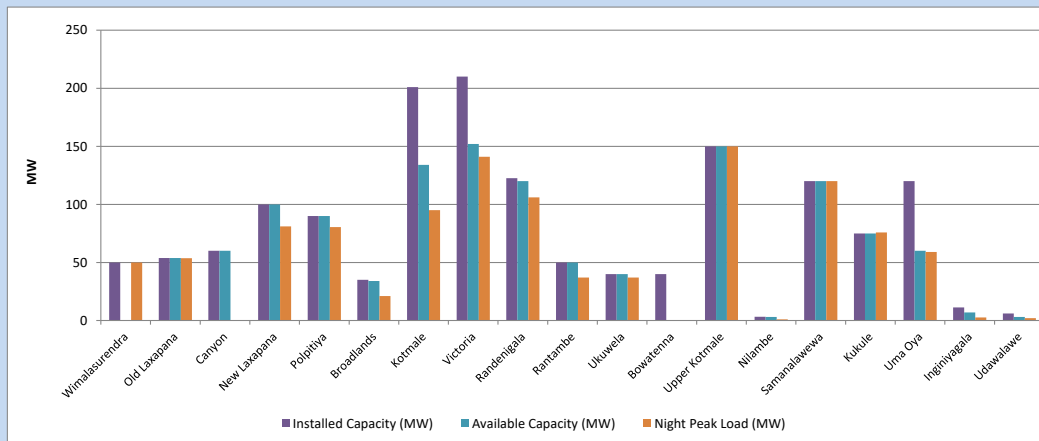


Available Generation is estimated based on plant availability at 6.00am on  
Broadlands power plant is operating in the Commissioning Stage

June 23, 2024

## 8. Major Hydro Plant Loading at Night Peak

June 22, 2024



Plant availability is recorded at 6.00 am on  
Broadlands power plant is operating in the Commissioning Stage

June 23, 2024

## 9. Summary of Major Plant performance

Table 05

Plant	Maximum Available Total Capacity	Plant Availability	Night peak Load	Plant Dispatch
	(MW)	(MW)	(MW)	(MWh)
Wimalasurendra	50	0	50	145
Old Laxapana	54	54	54	639
Canyon	60	60	0	179
New Laxapana	100	100	81	1,743
Polpitiya	90	90	81	1,320
Broadlands	35	34	21	380
Kotmale	201	134	95	1,520
Victoria	210	152	141	1,553
Randenigala	123	120	106	1,201
Rantambe	50	50	37	514
Ukuwela	40	40	37	757
Bowatenna	40	0	0	0
Upper Kotmale	150	150	150	1,089
Nilambe	3	3	1	35
Samanalawewa	120	120	120	1,143
Kukule	75	75	76	1,826
Uma Oya (Testing )	120	60	59	270
Inginiyagala	11	7	3	118
Udawalawe	6	3	2	75
Puttalam Coal I	270	270	235	4,988
Puttalam Coal II	270	260	196	4,395
Puttalam Coal III	270	217	207	4,446
KPS Small GTs	54	16	0	0
KPS GT 7	115	115	0	0
KCCP	165	99	0	0
Sapugaskanda A	70	32	0	0
Sapugaskanda B	72	63	0	0
Uthura Janani	22	16	0	0
Barge CEB	62	60	0	0
CEB-Hambantota	30	22	0	0
CEB-Mathugama	20	13	0	0
ACE Matara	24	0	0	0
Asia Power	50	0	0	0
KCCPS -2	163	150	0	0
West Coast	270	130	0	0
Nothern Power	36	0	0	0
ACE Embilipitiya	93	0	0	0
Sobadhanavi	220	0	0	0
<b>Total</b>	<b>3,594</b>	<b>2,714</b>	<b>2,134</b>	<b>37,360</b>

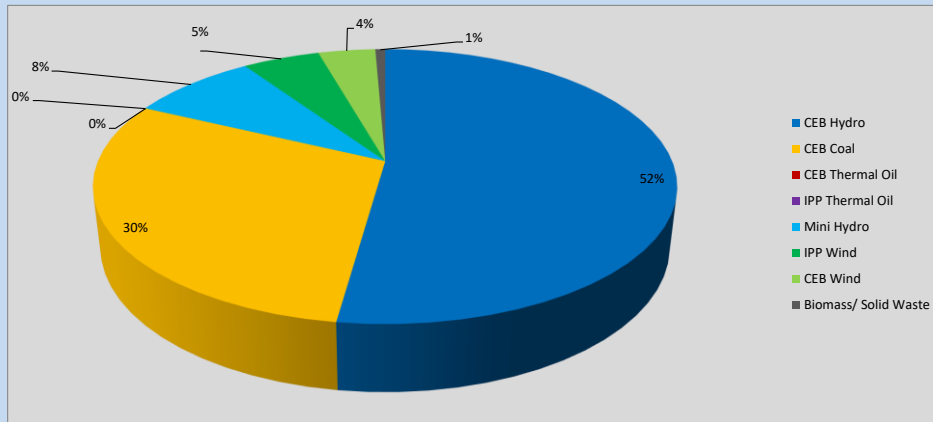
Note-

Plant availability is the availability recorded at 6 am on  
Installed Capacity is sourced from CEB Annual Report- 2022

June 23, 2024

### 10. Contribution to the Night Peak in MW

June 22, 2024



**Table 06**

CEB Hydro	1116	MW
CEB Coal	638	MW
CEB Thermal Oil	0	MW
IPP Thermal Oil	0	MW
Mini Hydro (Telemetered)	180	MW
IPP Wind	108.8	MW
CEB Wind	80.8	MW
Biomass/ Solid Waste	14	MW

### Recorded Peak Demand Data

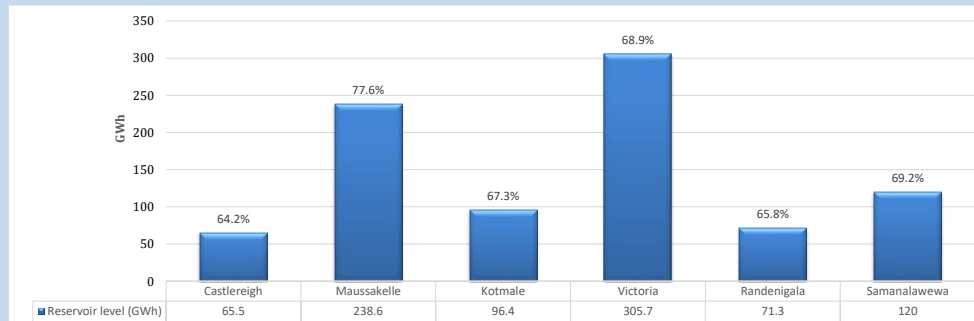
**Table 07**

Night Peak*	2,138	MW
Day Peak Maximum Demand	1,724	MW
Day Peak Minimum Demand	1,384	MW
Off Peak Minimum Demand	1,229	MW

Above figures are excluding contribution from roof top solar, non telemetered solar and mini hydro plants

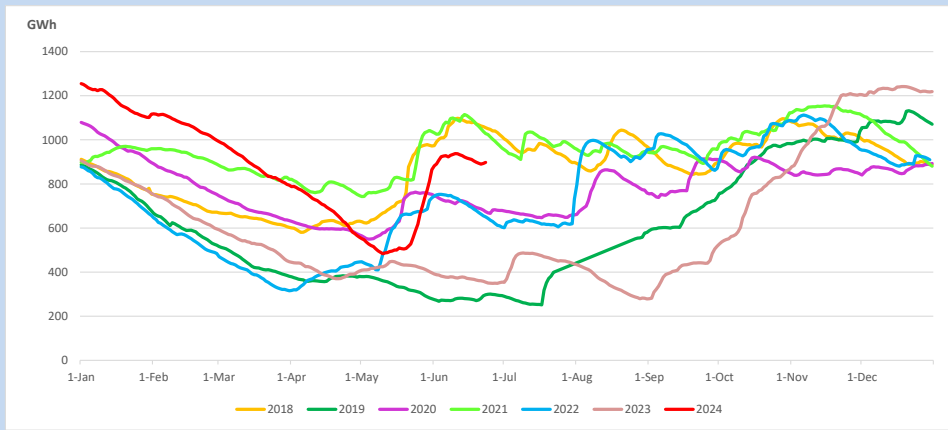
### Reservoir Levels -

as at 06.00 Hr on June 23, 2024

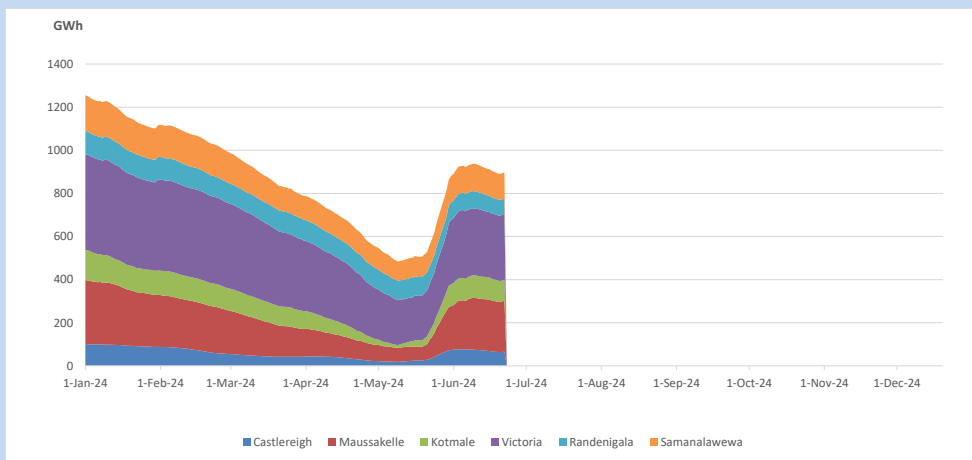


Total Reservoir Level 897.5 GWh  
% of Total capacity 70.2%

### 11. Comparison of Total Reservoir Storage Levels with Past Years

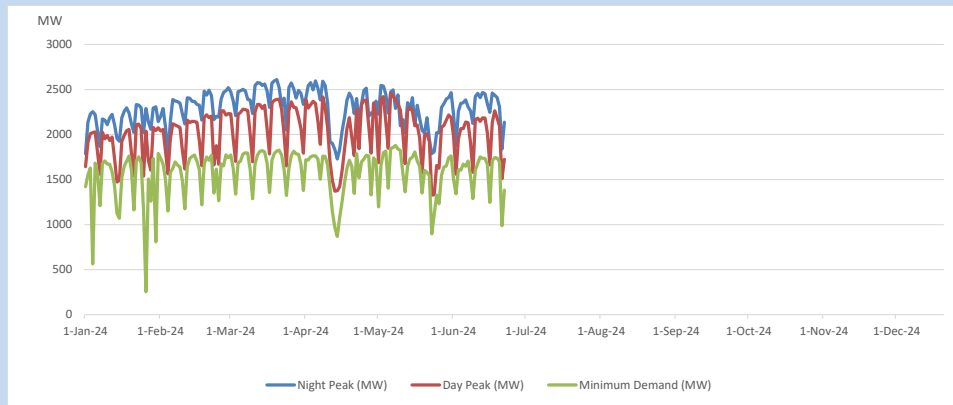


### 12. Variation of Major Hydro Reservoir Levels in the current year (GWh)





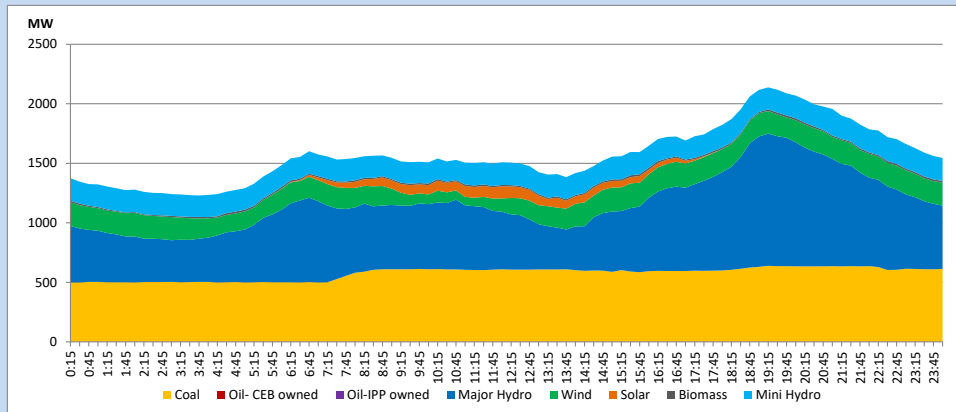
### 13. Variation of Demand during the current year



The above figures are excluding contribution from roof top solar, non telemetered solar and mini hydro plants

### 14. Daily Load Curve

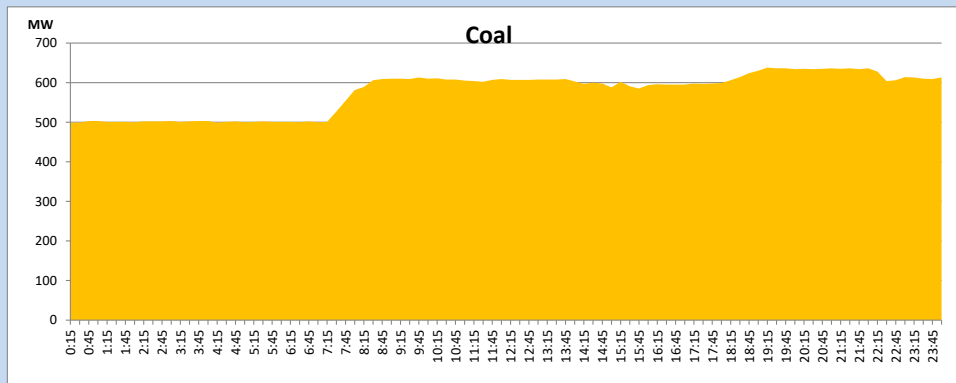
June 22, 2024



Solar and wind data is based on Telemetered Power Stations only

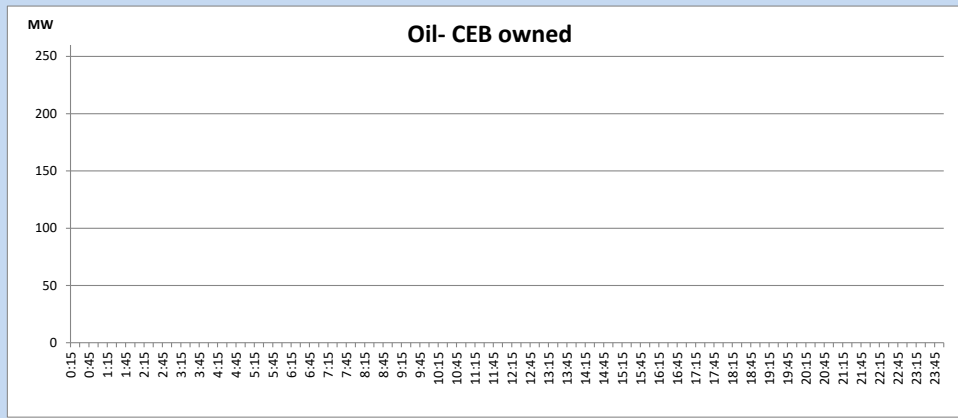
### Coal Generation during

June 22, 2024



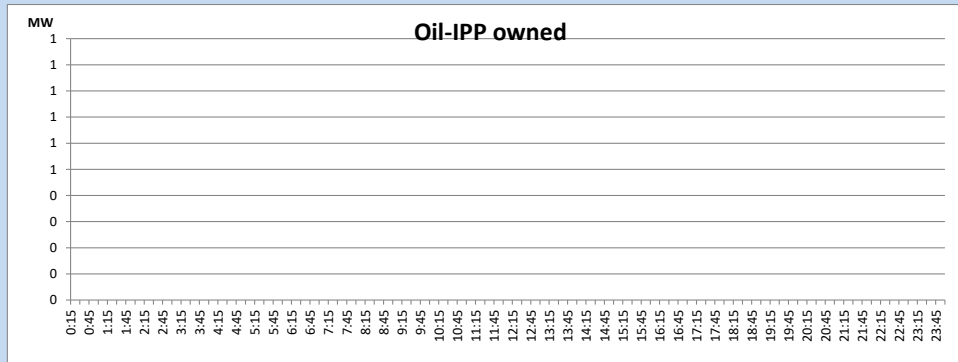
CEB Oil Plant Generation during

June 22, 2024



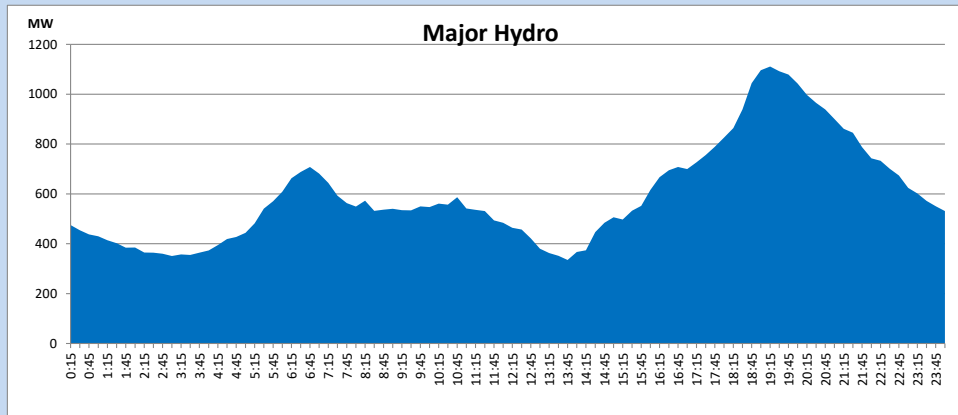
IPP Oil Plant Generation during

June 22, 2024



Major Hydro Generation during

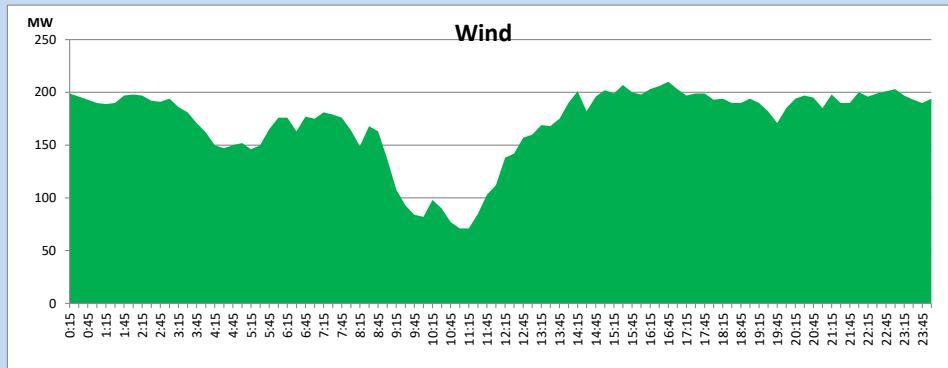
June 22, 2024



## Wind Generation during

June 22, 2024

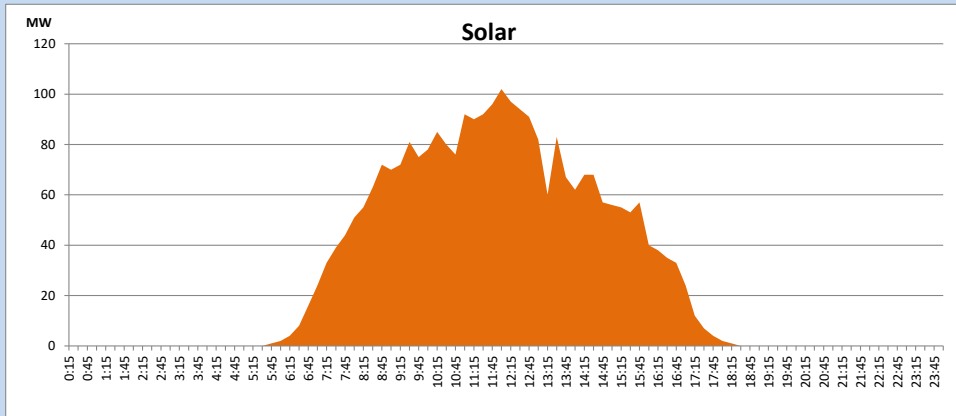
Based on Telemetered Power Stations only



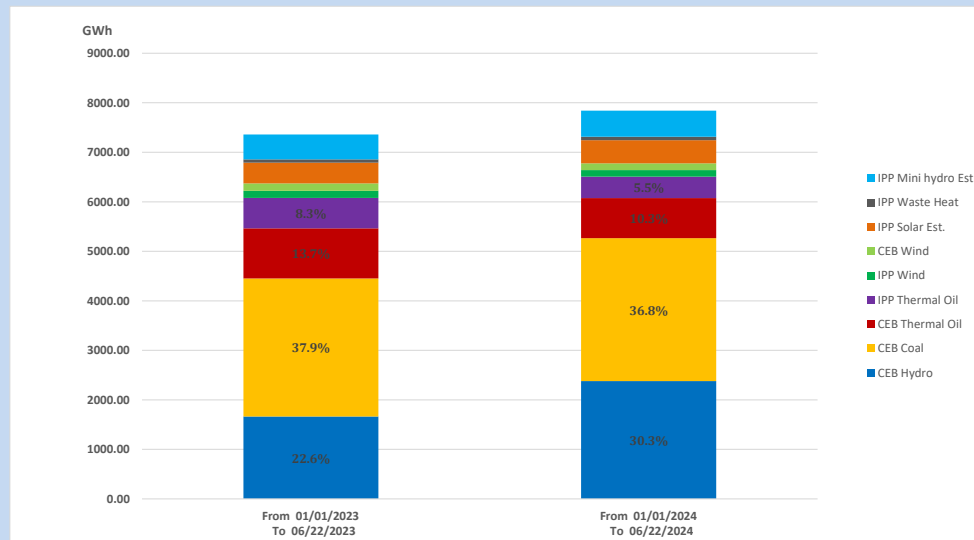
## Solar Generation during

June 22, 2024

Based on Telemetered Power Stations only



## 15. Cumulative Dispatch Comparison with Last Year



### Cumulative dispatch

From 01/01/2023 To 06/22/2023

7359 GWh

From 01/01/2024 To 06/22/2024

7840 GWh

The above figures are including contribution from roof top solar, non telemetered solar and mini hydro plants)

Unserviced energy due to power cuts has been excluded in 2023

Thermal Plant Fuel types

Table 08

Power Station	Primary Fuel
CEB Thermal	
Sapugaskanda 1	Heavy Fuel
Sapugaskanda 2	Heavy Fuel
Kelanitissa Small Gas Turbines	Auto Diesel
GT 7 - Kelanitissa	Auto Diesel
Kelanitissa CCY	Naphtha or Diesel
Lakvijaya 1	Coal
Lakvijaya 2	Coal
Lakvijaya 3	Coal
Uthuru Janani	Heavy Fuel
Barge CEB	Heavy Fuel
KCCPS -2	Auto Diesel

Power Station	Primary Fuel
Private Thermal	
West Coast	Auto Diesel / Heavy Fuel
Sobadhanavi	Auto Diesel

Major Incidents reported during the day

June 22, 2024

1). Uthuru Janani DG 02 and DG 03 made available at 11:22hrs.

2) Puttalam 132/33kV T/F 01 and 03 tripped at 00:47hrs (23.06.2024) from 33kV end only due to the operation of E/F protection. At the same time 33kV B/S CB tripped due to the operation of E/F protection , causing 33kV feeder 1,2,3 and 4 to be dead. Puttalam T/F 01 and 03 and all affected feeders are yet to be restored.