

Generation and Reservoirs Statistics

June 21, 2024



PUBLIC UTILITIES COMMISSION OF SRI LANKA

1. Daily Generation Mix in MWh

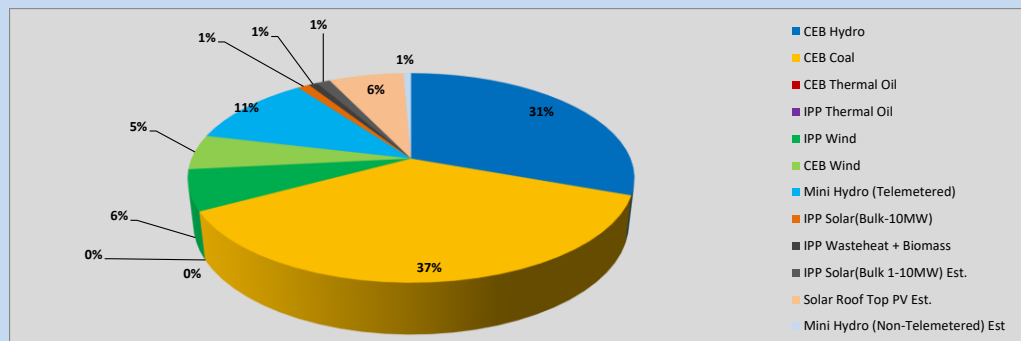


Table 01

	Generation (MWh)
CEB Hydro	10,945
CEB Coal	13,108
CEB Thermal Oil	-
IPP Thermal Oil	-
IPP Wind	2,247
CEB Wind	1,935
Mini Hydro (Telemetered)	3,998
IPP Solar (Bulk)	370
IPP Waste heat + Biomass	268
Total Generation (Excluding estimated figures)	32,871
* Estimated unserved energy	0
* Estimated Mini Hydro (Non telemetered)	241
* Estimated IPP Solar PV (Bulk 1-10MW)	420
* Estimated Solar Roof Top PV	2320
Total Generation (Including estimated figures)	35,852

* Estimated figures of CEB generation report

Table 02

	Installed Capacity (MW)
CEB Hydro	1533
CEB Coal	810
CEB Thermal Oil	773.1
IPP Thermal Oil (West Coast)	490
IPP Wind	163
CEB Wind	100
Mini Hydro	422
IPP Waste heat + Biomass	54
IPP Solar	137
Rooftop Solar (Ordinary)	326
Rooftop Solar (LT Bulk)	285
Rooftop Solar (HT Bulk)	79

Data Source - Monthly Review Report [Jan-2024]

2. Cumulative Dispatch

Following data excludes the contribution from roof top solar, non telemetered solar and mini hydro plants

Table 03 - Current Month

Category	Dispatch (GWh)	
CEB Hydro	325	34.32%
CEB Coal	337	35.56%
CEB Thermal Oil	33	3.45%
IPP Thermal	14	1.43%
SPP Wind	39	4.17%
CEB Wind	43	4.58%
Mini Hydro *	88	9.29%
IPP Solar *	63	6.63%
IPP Waste heat + BMP	6	0.59%
Total	947	

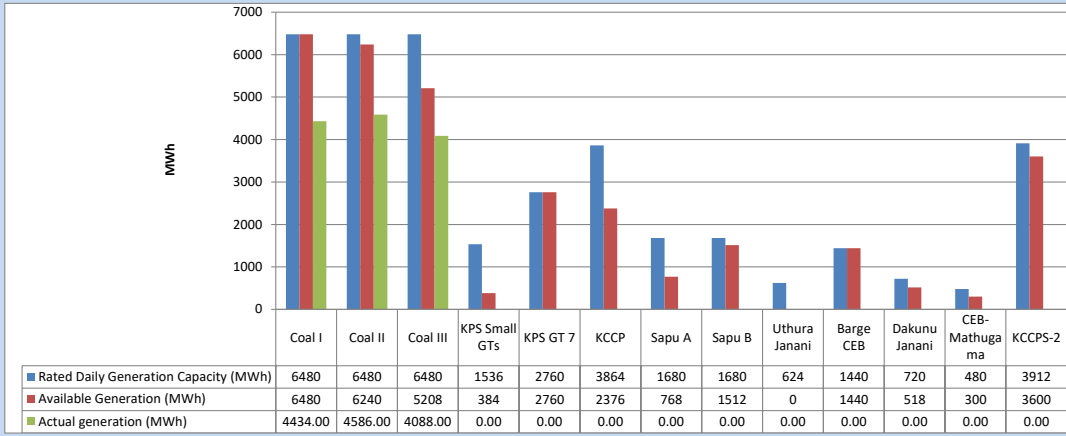
Table 04 - Current Year

Category	Dispatch (GWh)	
CEB Hydro	2,364	30.31%
CEB Coal	2,872	36.83%
CEB Thermal Oil	811	10.40%
IPP Thermal	431	5.52%
SPP Wind	130	1.67%
CEB Wind	137	1.76%
Mini Hydro *	520	6.66%
IPP Solar *	464	5.95%
IPP Waste heat	70	0.90%
Total	7,799	

*Including estimated contribution from non telemetered plants

3. CEB owned Thermal Plant Dispatch

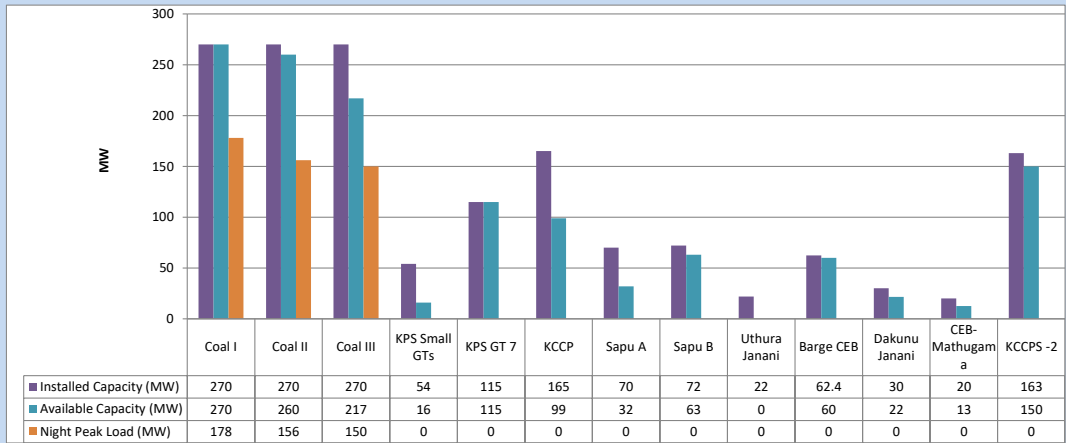
June 21, 2024



Available Generation is estimated based on plant availability at 6.00am on

June 22, 2024

4. CEB owned Thermal Plant Loading at the Night Peak

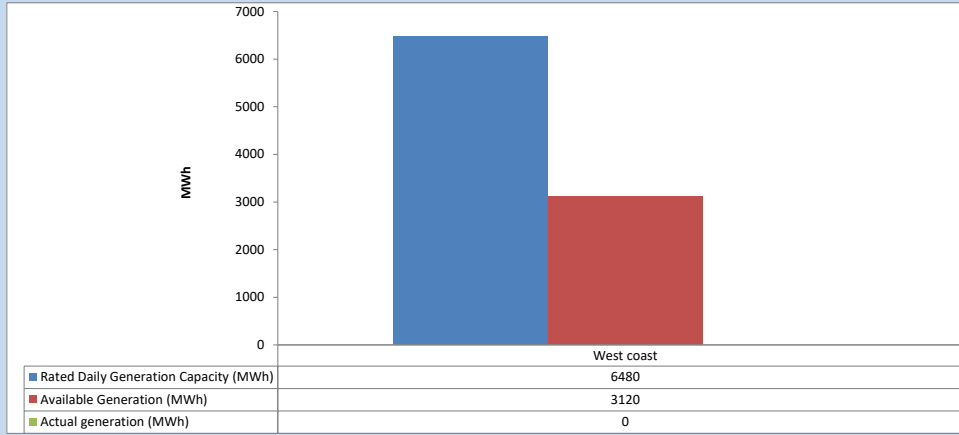


Plant availability is recorded at 6.00 am on

June 22, 2024

5. IPP owned Thermal Plant Dispatch

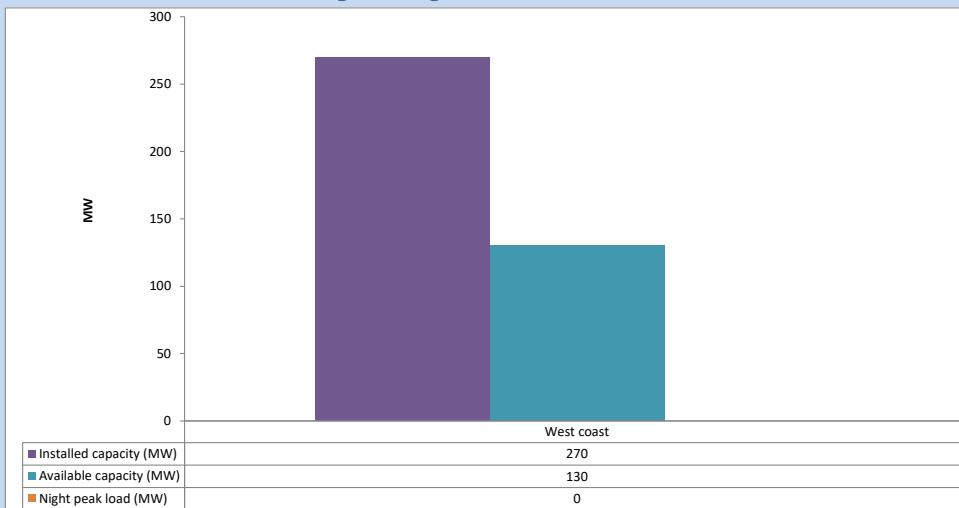
June 21, 2024



Available Generation is estimated based on plant availability at 6.00am on

June 22, 2024

6. IPP owned Thermal Plant Loading at the Night Peak

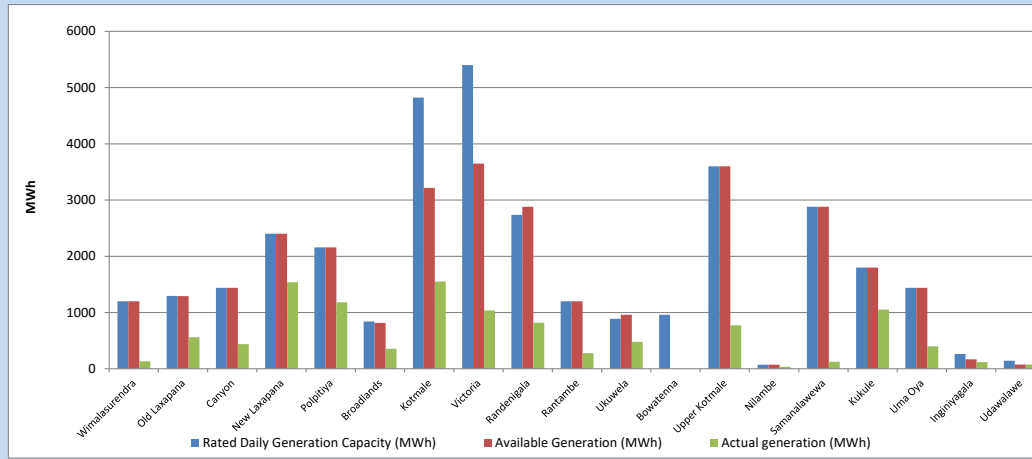


Plant availability is recorded at 6.00 am on

June 22, 2024

7. Major Hydro Plant Dispatch

June 21, 2024

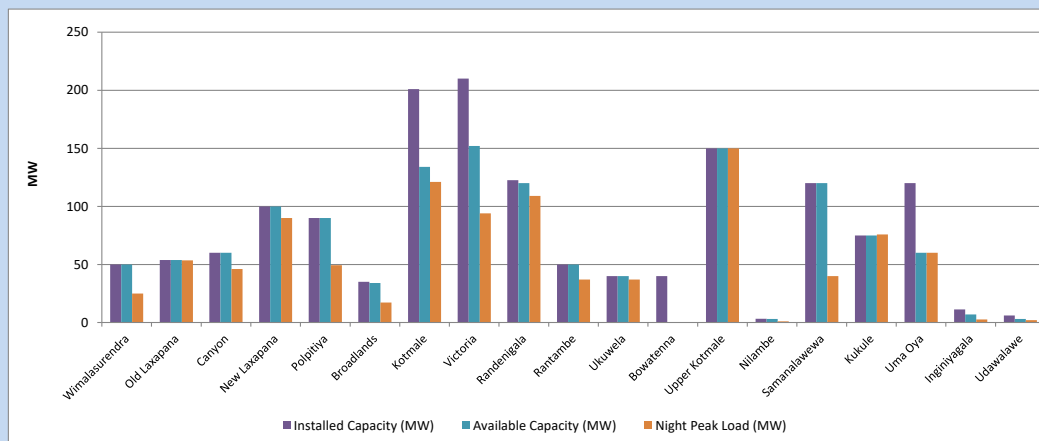


Available Generation is estimated based on plant availability at 6.00am on
Broadlands power plant is operating in the Commissioning Stage

June 22, 2024

8. Major Hydro Plant Loading at Night Peak

June 21, 2024



Plant availability is recorded at 6.00 am on
Broadlands power plant is operating in the Commissioning Stage

June 22, 2024

9. Summary of Major Plant performance

Table 05

Plant	Maximum Available Total Capacity	Plant Availability	Night peak Load	Plant Dispatch
	(MW)	(MW)	(MW)	(MWh)
Wimalasurendra	50	50	25	134
Old Laxapana	54	54	54	561
Canyon	60	60	46	438
New Laxapana	100	100	90	1,538
Polpitiya	90	90	49	1,180
Broadlands	35	34	17	355
Kotmale	201	134	121	1,550
Victoria	210	152	94	1,037
Randenigala	123	120	109	819
Rantambe	50	50	37	279
Ukuwela	40	40	37	479
Bowatenna	40	0	0	0
Upper Kotmale	150	150	150	773
Nilambe	3	3	1	36
Samanalawewa	120	120	40	123
Kukule	75	75	76	1,053
Uma Oya (Testing)	120	60	60	398
Inginiyagala	11	7	3	118
Udawalawe	6	3	2	76
Puttalam Coal I	270	270	178	4,434
Puttalam Coal II	270	260	156	4,586
Puttalam Coal III	270	217	150	4,088
KPS Small GTs	54	16	0	0
KPS GT 7	115	115	0	0
KCCP	165	99	0	0
Sapugaskanda A	70	32	0	0
Sapugaskanda B	72	63	0	0
Uthura Janani	22	0	0	0
Barge CEB	62	60	0	0
CEB-Hambantota	30	22	0	0
CEB-Mathugama	20	13	0	0
ACE Matara	24	0	0	0
Asia Power	50	0	0	0
KCCPS -2	163	150	0	0
West Coast	270	130	0	0
Nothern Power	36	0	0	0
ACE Embilipitiya	93	0	0	0
Sobadhanavi	220	0	0	0
Total	3,594	2,748	1,860	32,873

Note-

Plant availability is the availability recorded at 6 am on
Installed Capacity is sourced from CEB Annual Report- 2022

June 22, 2024

10. Contribution to the Night Peak in MW

June 21, 2024

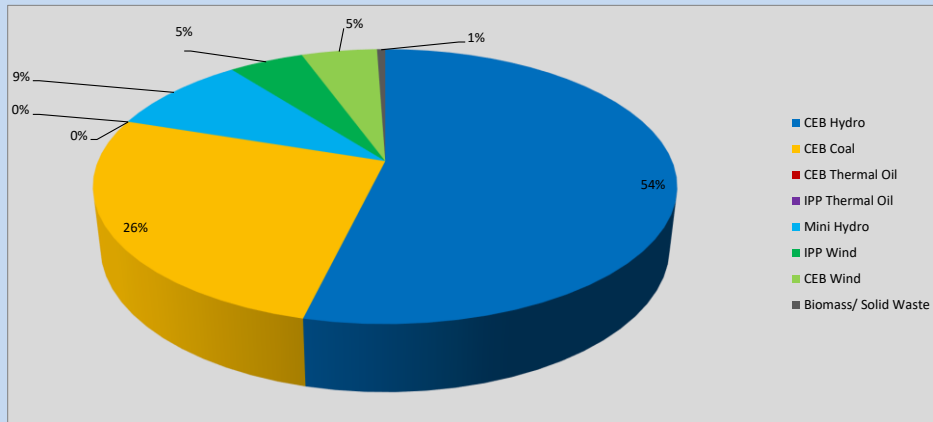


Table 06

CEB Hydro	988	MW
CEB Coal	484	MW
CEB Thermal Oil	0	MW
IPP Thermal Oil	0	MW
Mini Hydro (Telemetered)	173	MW
IPP Wind	91	MW
CEB Wind	92.1	MW
Biomass/ Solid Waste	10	MW

Recorded Peak Demand Data

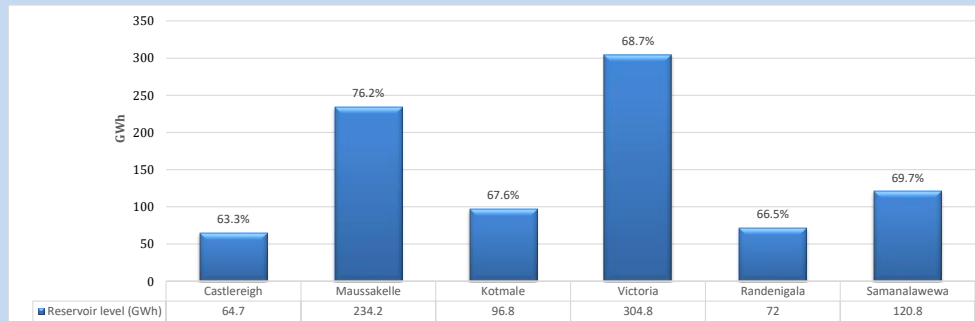
Table 07

Night Peak*	1,838	MW
Day Peak Maximum Demand	1,510	MW
Day Peak Minimum Demand	988	MW
Off Peak Minimum Demand	1,380	MW

Above figures are excluding contribution from roof top solar, non telemetered solar and mini hydro plants

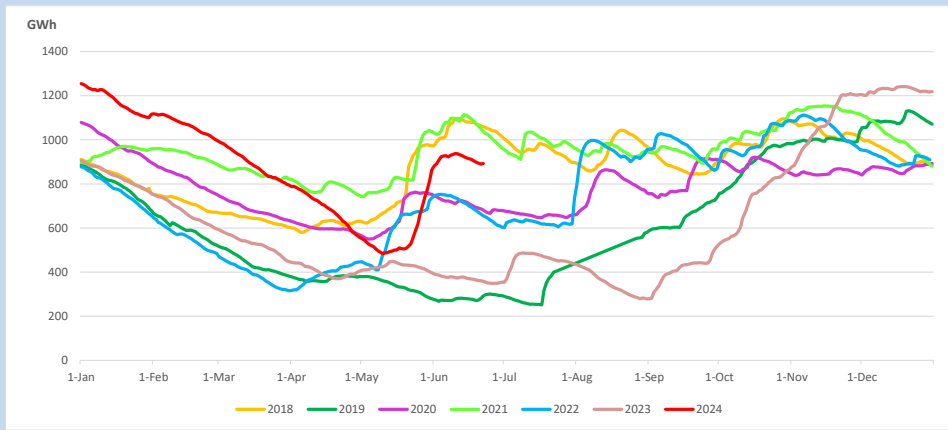
Reservoir Levels -

as at 06.00 Hr on June 22, 2024

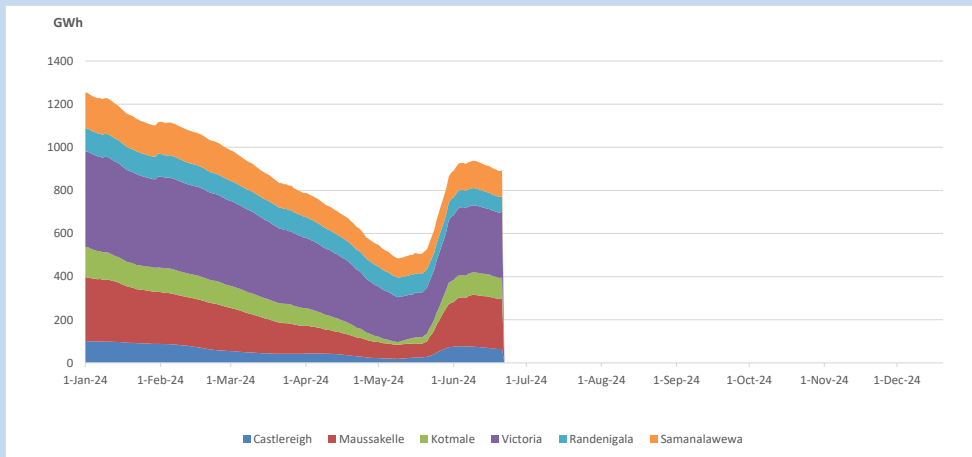


Total Reservoir Level 893.3 GWh
% of Total capacity 69.9%

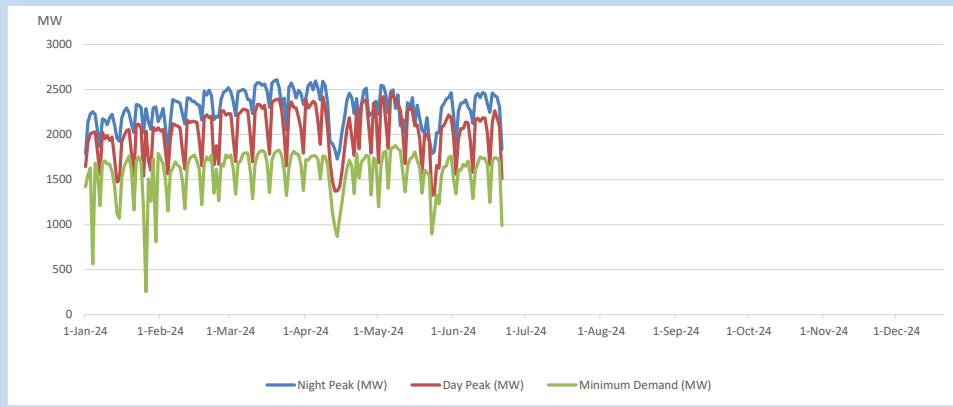
11. Comparison of Total Reservoir Storage Levels with Past Years



12. Variation of Major Hydro Reservoir Levels in the current year (GWh)



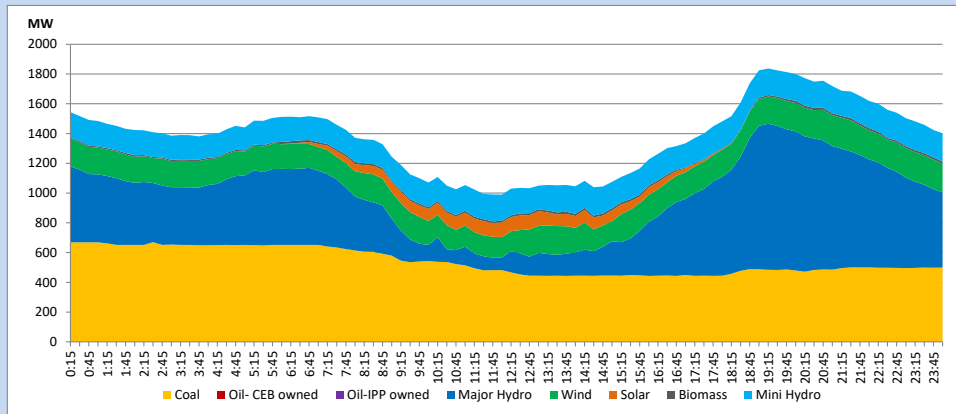
13. Variation of Demand during the current year



The above figures are excluding contribution from roof top solar, non telemetered solar and mini hydro plants

14. Daily Load Curve

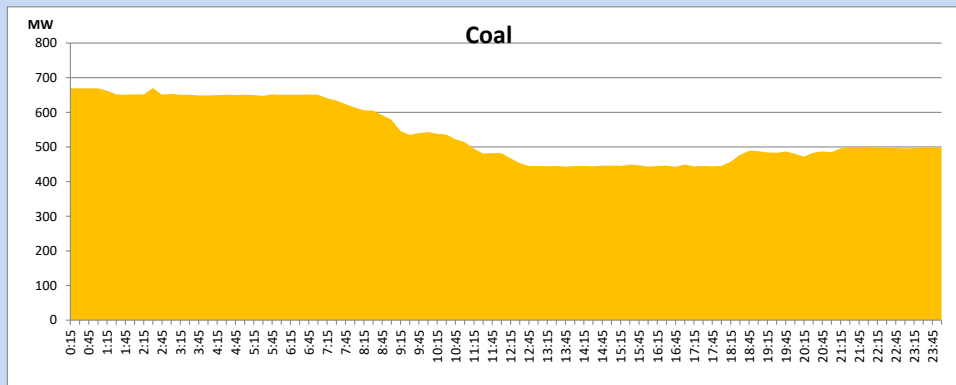
June 21, 2024



Solar and wind data is based on Telemetered Power Stations only

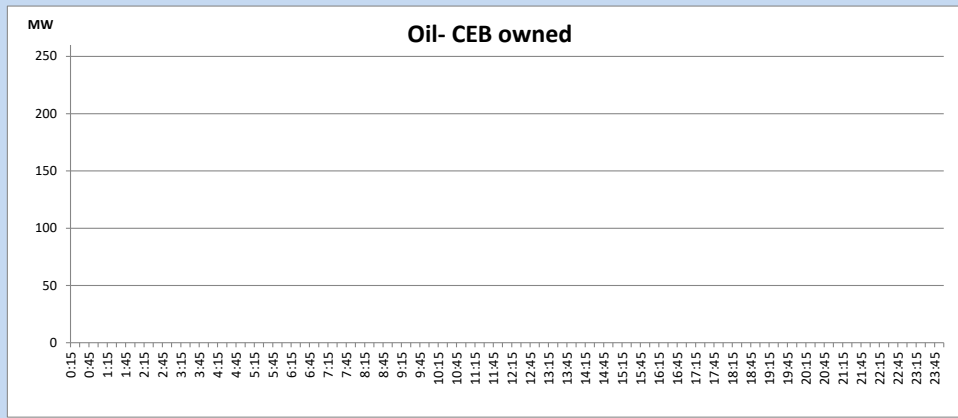
Coal Generation during

June 21, 2024



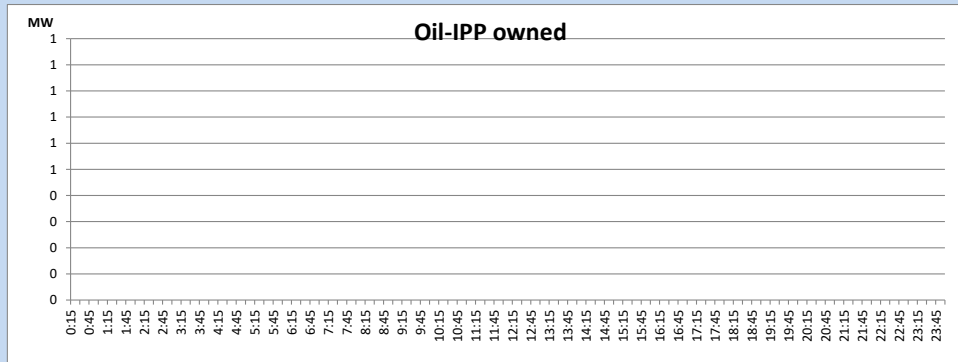
CEB Oil Plant Generation during

June 21, 2024



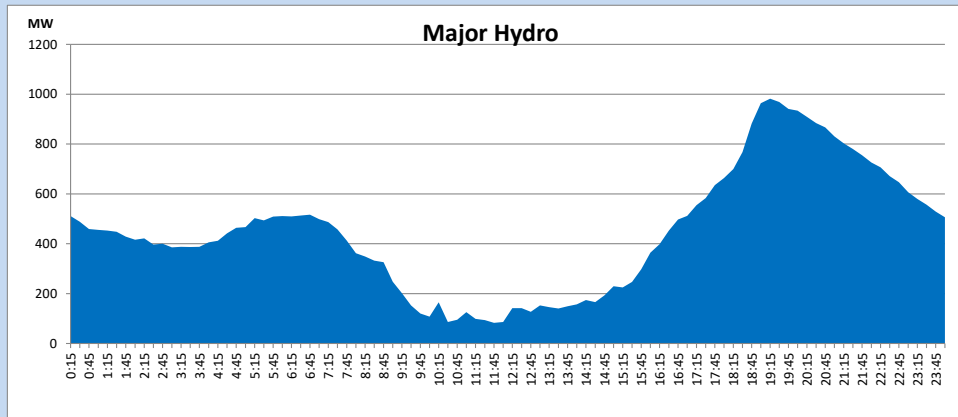
IPP Oil Plant Generation during

June 21, 2024



Major Hydro Generation during

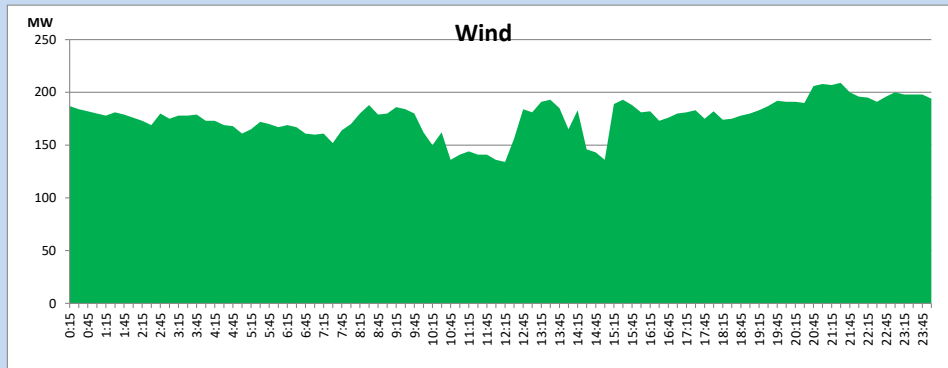
June 21, 2024



Wind Generation during

June 21, 2024

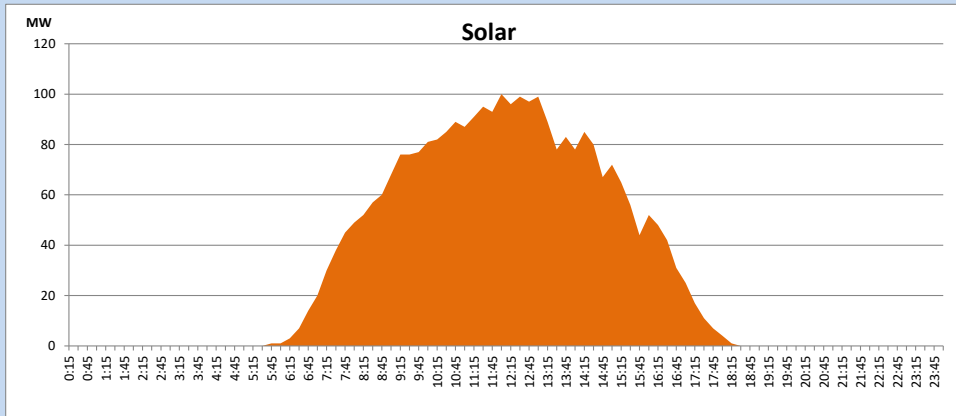
Based on Telemetered Power Stations only



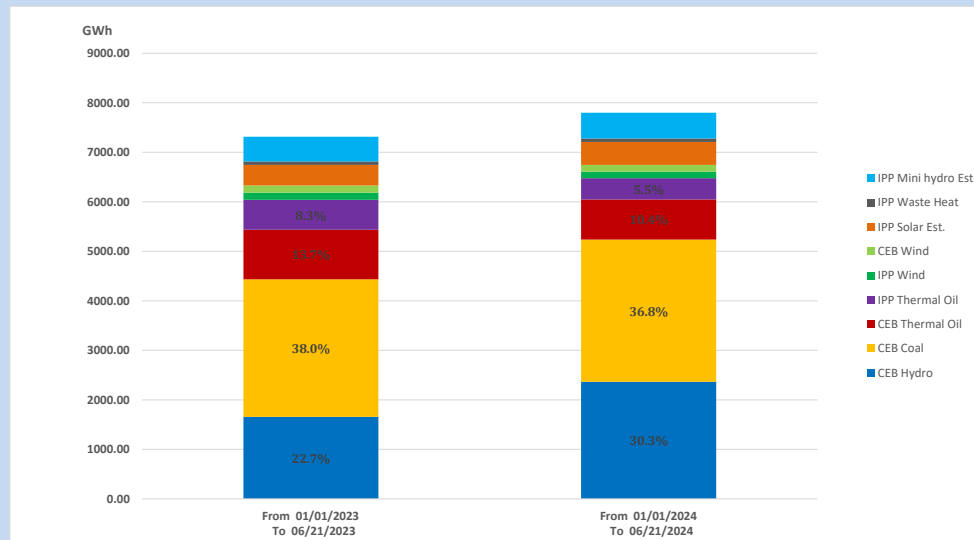
Solar Generation during

June 21, 2024

Based on Telemetered Power Stations only



15. Cumulative Dispatch Comparison with Last Year



Cumulative dispatch

From 01/01/2023 To 06/21/2023

7313 GWh

From 01/01/2024 To 06/21/2024

7799 GWh

The above figures are including contribution from roof top solar, non telemetered solar and mini hydro plants)

Unserviced energy due to power cuts has been excluded in 2023

Thermal Plant Fuel types

Table 08

Power Station	Primary Fuel
CEB Thermal	
Sapugaskanda 1	Heavy Fuel
Sapugaskanda 2	Heavy Fuel
Kelanitissa Small Gas Turbines	Auto Diesel
GT 7 - Kelanitissa	Auto Diesel
Kelanitissa CCY	Naphtha or Diesel
Lakvijaya 1	Coal
Lakvijaya 2	Coal
Lakvijaya 3	Coal
Uthuru Janani	Heavy Fuel
Barge CEB	Heavy Fuel
KCCPS -2	Auto Diesel

Power Station	Primary Fuel
Private Thermal	
West Coast	Auto Diesel / Heavy Fuel
Sobadhanavi	Auto Diesel

Major Incidents reported during the day

June 21, 2024

- 1) Kosgama 132/33kV T/F 01 which was manually switched off on 21.06.2024, was normalized at 10:13hrs.