

Generation and Reservoirs Statistics

May 18, 2024



PUBLIC UTILITIES COMMISSION OF SRI LANKA

1. Daily Generation Mix in MWh

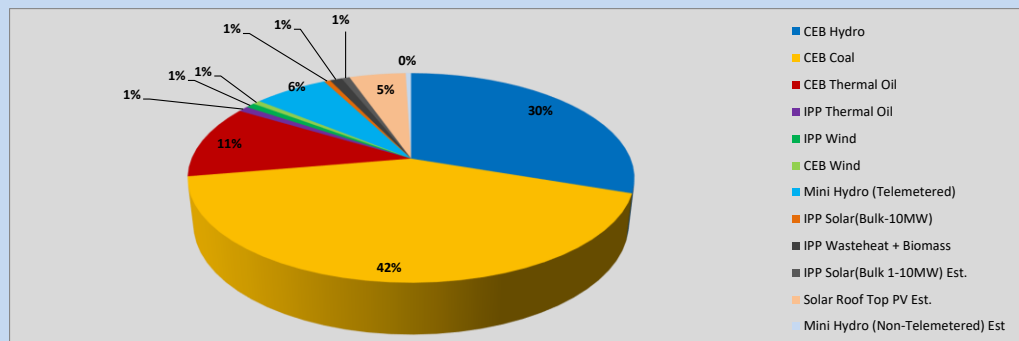


Table 01

	Generation (MWh)
CEB Hydro	13,163
CEB Coal	18,315
CEB Thermal Oil	4,934
IPP Thermal Oil	379
IPP Wind	347
CEB Wind	280
Mini Hydro (Telemetered)	2,800
IPP Solar (Bulk)	232
IPP Waste heat + Biomass	458
Total Generation (Excluding estimated figures)	40,908
* Estimated unserved energy	0
* Estimated Mini Hydro (Non telemetered)	202
* Estimated IPP Solar PV (Bulk 1-10MW)	304
* Estimated Solar Roof Top PV	2130
Total Generation (Including estimated figures)	43,544

* Estimated figures of CEB generation report

Table 02

	Installed Capacity (MW)
CEB Hydro	1530
CEB Coal	810
CEB Thermal Oil	773.1
IPP Thermal Oil (West Coast)	270
IPP Wind	148
CEB Wind	100
Mini Hydro	416
IPP Waste heat + Biomass	50
IPP Solar	110
Rooftop Solar (Ordinary)	250
Rooftop Solar (LT Bulk)	234
Rooftop Solar (HT Bulk)	56

Data Source - Monthly Review Report [Jan-2024]

2. Cumulative Dispatch

Following data excludes the contribution from roof top solar, non telemetered solar and mini hydro plants

Table 03 - Current Month

Category	Dispatch (GWh)	
CEB Hydro	203	23.73%
CEB Coal	348	40.70%
CEB Thermal Oil	182	21.33%
IPP Thermal	1	0.15%
SPP Wind	7	0.81%
CEB Wind	10	1.15%
Mini Hydro *	47	5.54%
IPP Solar *	50	5.82%
IPP Waste heat + BMP	7	0.76%
Total	855	

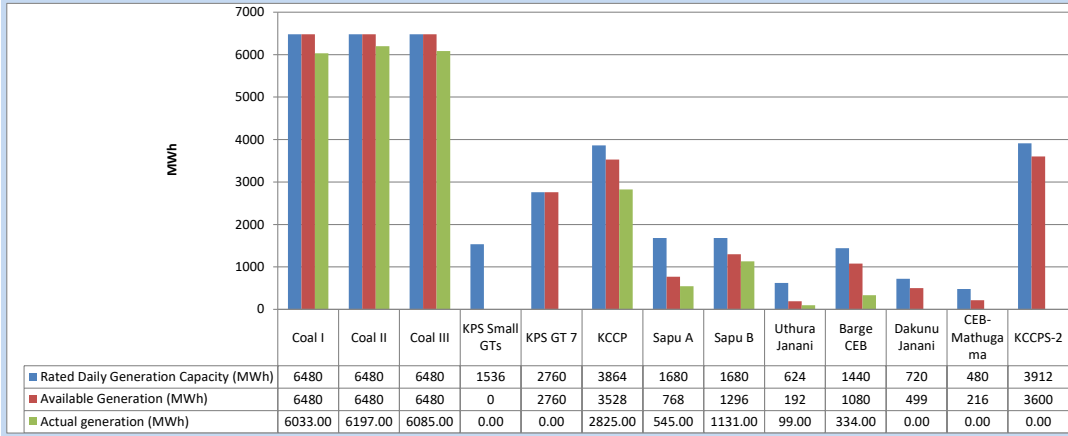
Table 04 - Current Year

Category	Dispatch (GWh)	
CEB Hydro	1,844	29.43%
CEB Coal	2,309	36.84%
CEB Thermal Oil	808	12.89%
IPP Thermal	409	6.53%
SPP Wind	64	1.03%
CEB Wind	73	1.17%
Mini Hydro *	358	5.71%
IPP Solar *	346	5.52%
IPP Waste heat	56	0.89%
Total	6,266	

*Including estimated contribution from non telemetered plants

3. CEB owned Thermal Plant Dispatch

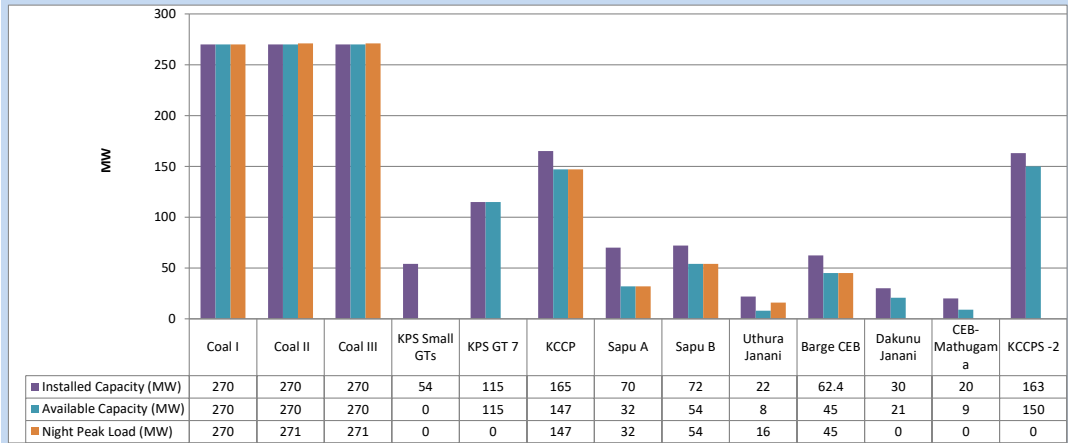
May 18, 2024



Available Generation is estimated based on plant availability at 6.00am on

May 19, 2024

4. CEB owned Thermal Plant Loading at the Night Peak

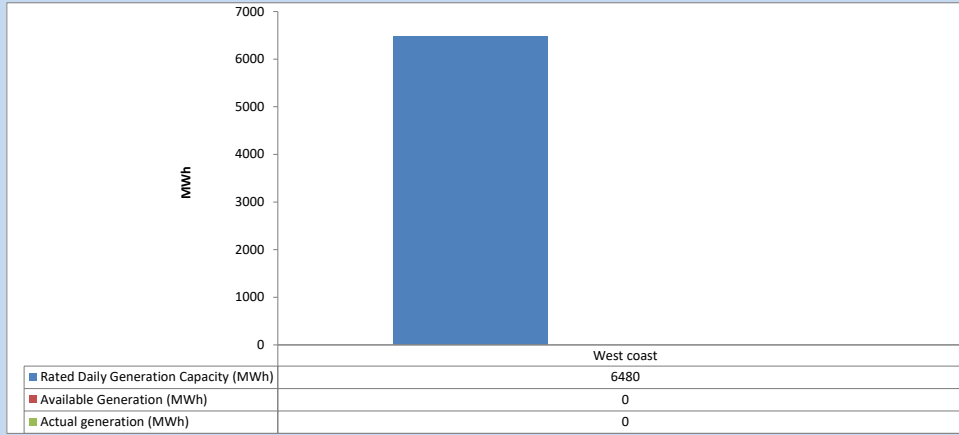


Plant availability is recorded at 6.00 am on

May 19, 2024

5. IPP owned Thermal Plant Dispatch

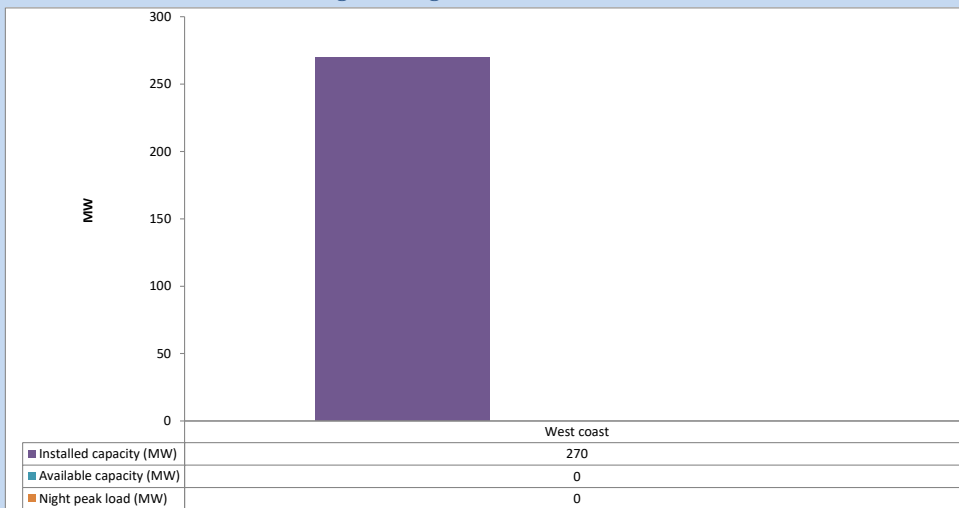
May 18, 2024



Available Generation is estimated based on plant availability at 6.00am on

May 19, 2024

6. IPP owned Thermal Plant Loading at the Night Peak

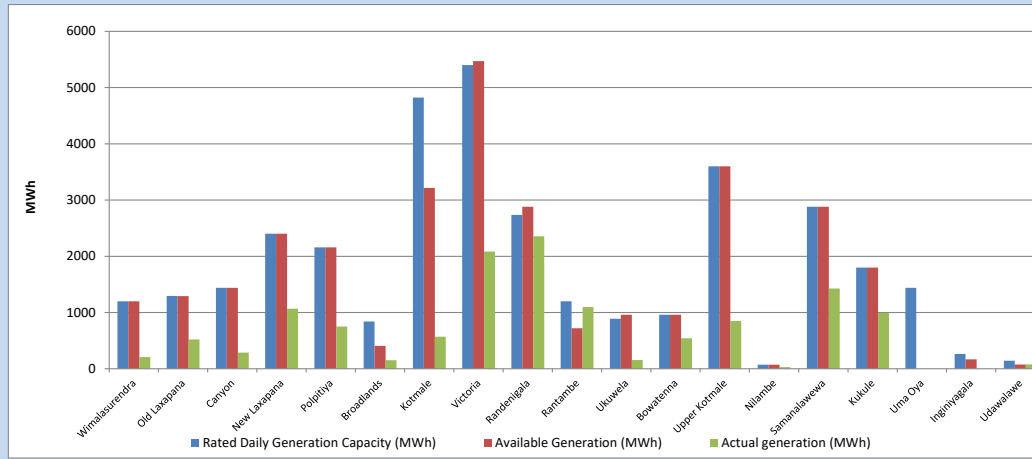


Plant availability is recorded at 6.00 am on

May 19, 2024

7. Major Hydro Plant Dispatch

May 18, 2024

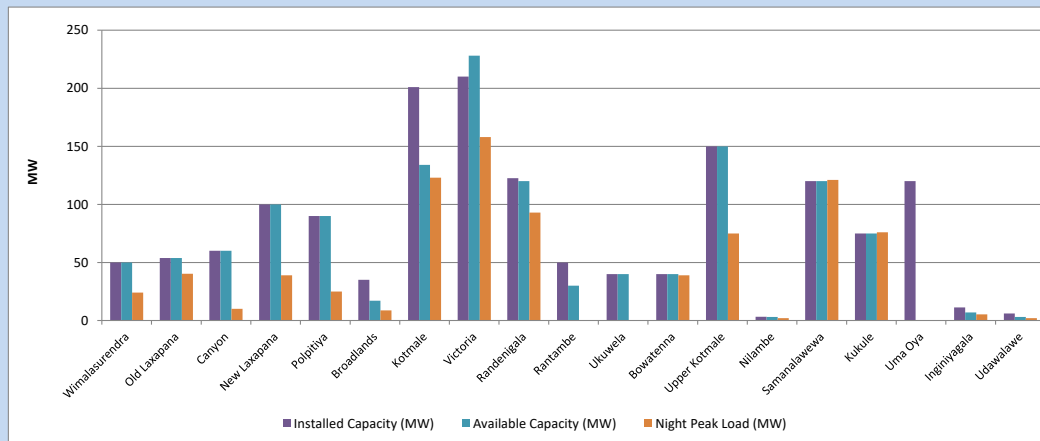


Available Generation is estimated based on plant availability at 6.00am on
Broadlands power plant is operating in the Commissioning Stage

May 19, 2024

8. Major Hydro Plant Loading at Night Peak

May 18, 2024



Plant availability is recorded at 6.00 am on
Broadlands power plant is operating in the Commissioning Stage

May 19, 2024

9. Summary of Major Plant performance

Table 05

Plant	Maximum Available Total Capacity	Plant Availability	Night peak Load	Plant Dispatch
	(MW)	(MW)	(MW)	(MWh)
Wimalasurendra	50	50	24	206
Old Laxapana	54	54	40	520
Canyon	60	60	10	286
New Laxapana	100	100	39	1,068
Polpitiya	90	90	25	750
Broadlands	35	17	9	152
Kotmale	201	134	123	570
Victoria	210	228	158	2,086
Randenigala	123	120	93	2,354
Rantambe	50	30	0	1,097
Ukuwela	40	40	0	156
Bowatenna	40	40	39	542
Upper Kotmale	150	150	75	850
Nilambe	3	3	2	28
Samanalawewa	120	120	121	1,427
Kukule	75	75	76	995
Uma Oya (Testing)	120	0	0	0
Inginiyagala	11	7	5	0
Udawalawe	6	3	2	77
Puttalam Coal I	270	270	270	6,033
Puttalam Coal II	270	270	271	6,197
Puttalam Coal III	270	270	271	6,085
KPS Small GTs	54	0	0	0
KPS GT 7	115	115	0	0
KCCP	165	147	147	2,825
Sapugaskanda A	70	32	32	545
Sapugaskanda B	72	54	54	1,131
Uthura Janani	22	8	16	99
Barge CEB	62	45	45	334
CEB-Hambantota	30	21	0	0
CEB-Mathugama	20	9	0	0
ACE Matara	24	0	0	0
Asia Power	50	0	0	0
KCCPS -2	163	150	0	0
West Coast	270	0	0	0
Nothern Power	36	0	0	0
ACE Embilipitiya	93	0	0	0
Sobadhanavi	220	0	0	379
Total	3,594	2,712	2,137	40,909

Note-

Plant availability is the availability recorded at 6 am on
Installed Capacity is sourced from CEB Annual Report- 2022

May 19, 2024

10. Contribution to the Night Peak in MW

May 18, 2024

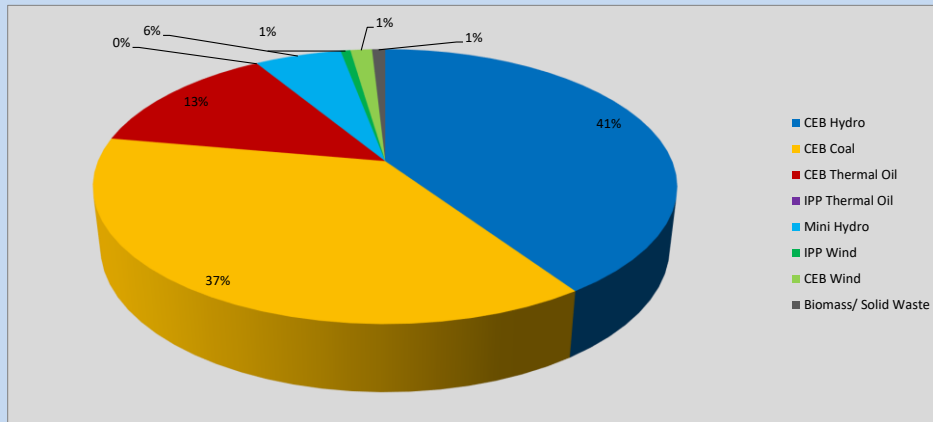


Table 06

CEB Hydro	883	MW
CEB Coal	812	MW
CEB Thermal Oil	294	MW
IPP Thermal Oil	0	MW
Mini Hydro (Telemetered)	125	MW
IPP Wind	14.1	MW
CEB Wind	31.2	MW
Biomass/ Solid Waste	19	MW

Recorded Peak Demand Data

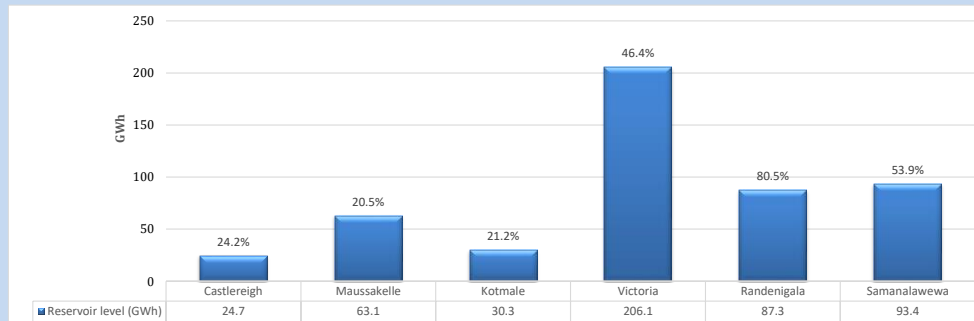
Table 07

Night Peak*	2,179	MW
Day Peak Maximum Demand	1,961	MW
Day Peak Minimum Demand	1,648	MW
Off Peak Minimum Demand	1,376	MW

Above figures are excluding contribution from roof top solar, non telemetered solar and mini hydro plants

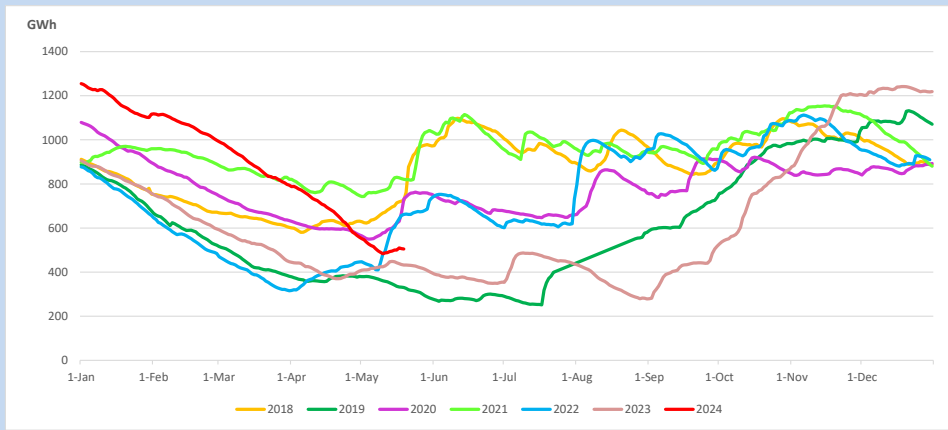
Reservoir Levels -

as at 06.00 Hr on May 19, 2024

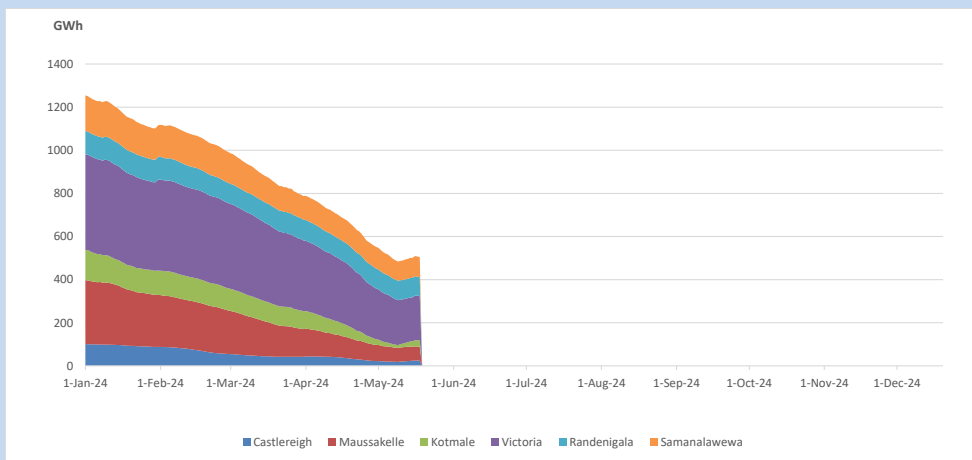


Total Reservoir Level 504.9 GWh
% of Total capacity 39.5%

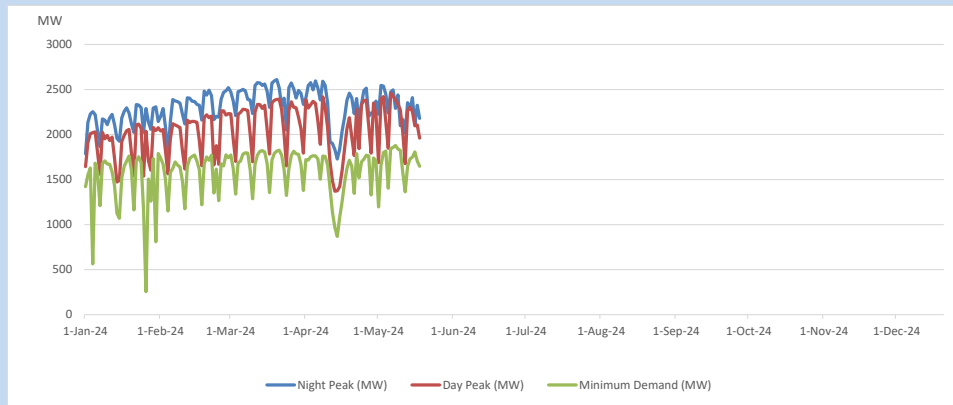
11. Comparison of Total Reservoir Storage Levels with Past Years



12. Variation of Major Hydro Reservoir Levels in the current year (GWh)



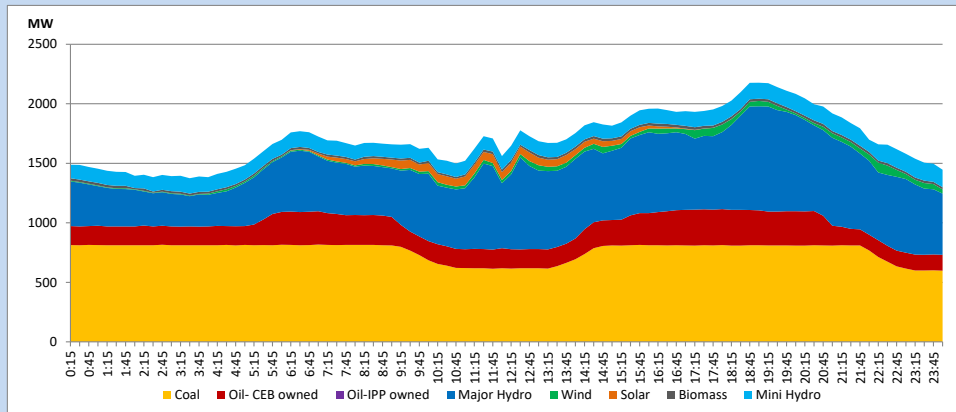
13. Variation of Demand during the current year



The above figures are excluding contribution from roof top solar, non telemetered solar and mini hydro plants

14. Daily Load Curve

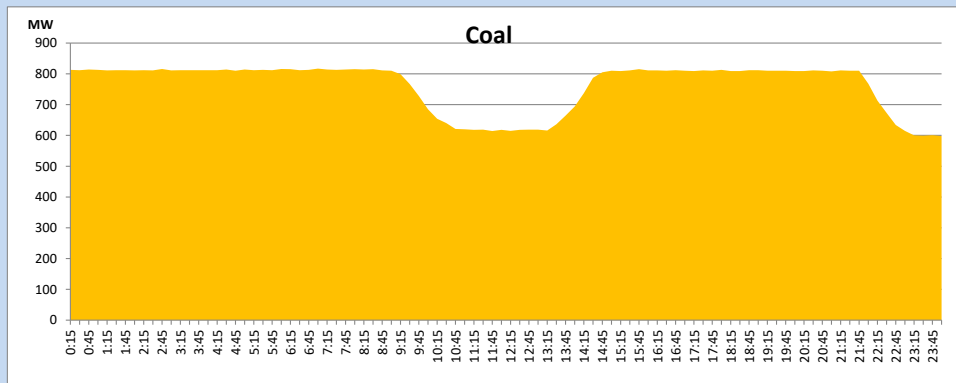
May 18, 2024



Solar and wind data is based on Telemetered Power Stations only

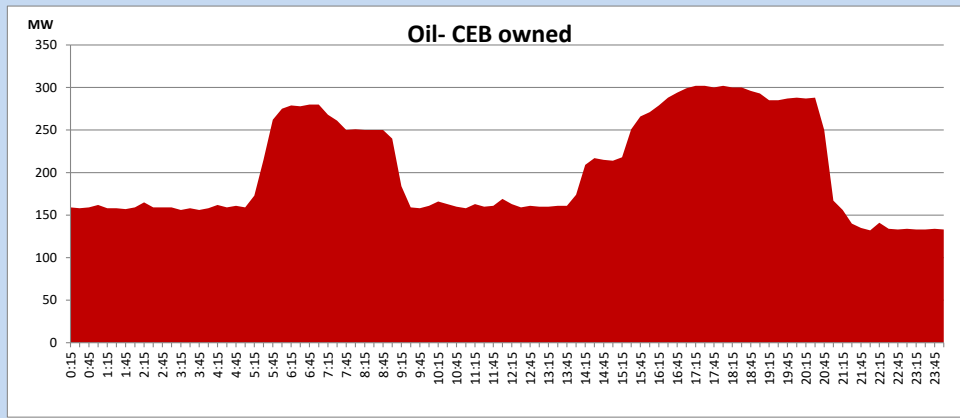
Coal Generation during

May 18, 2024



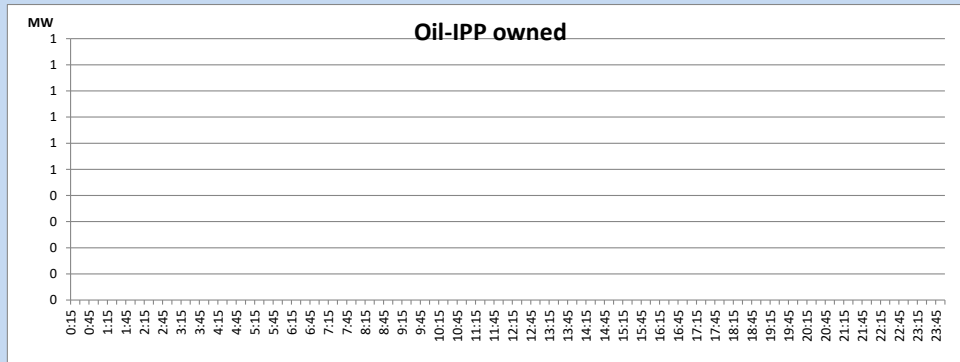
CEB Oil Plant Generation during

May 18, 2024



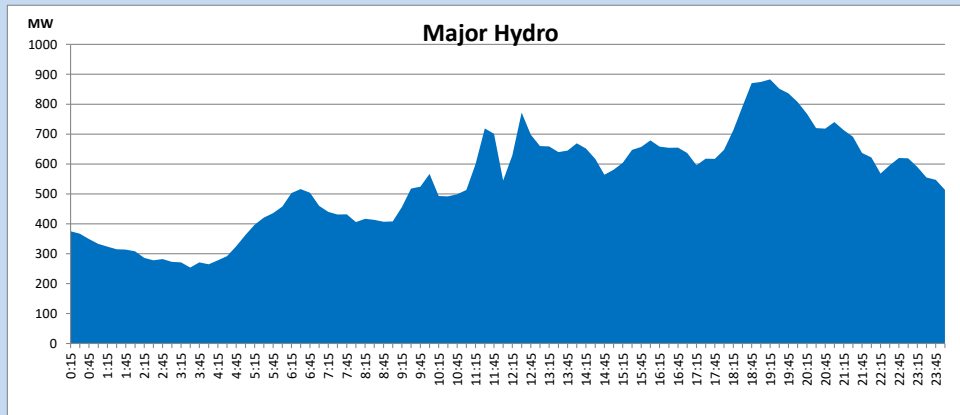
IPP Oil Plant Generation during

May 18, 2024



Major Hydro Generation during

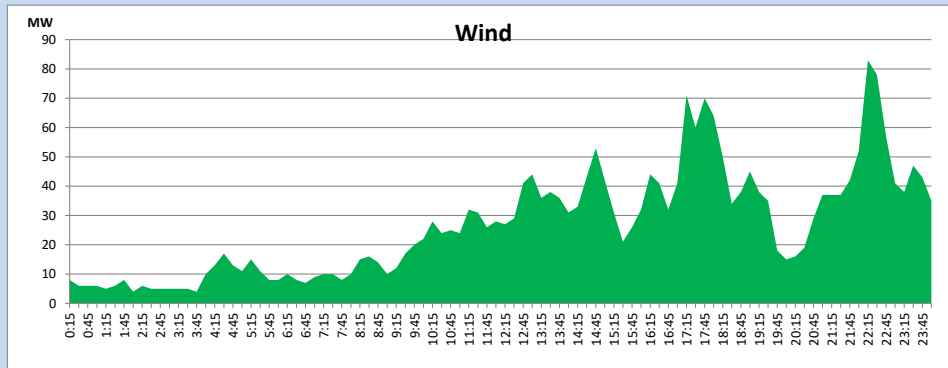
May 18, 2024



Wind Generation during

May 18, 2024

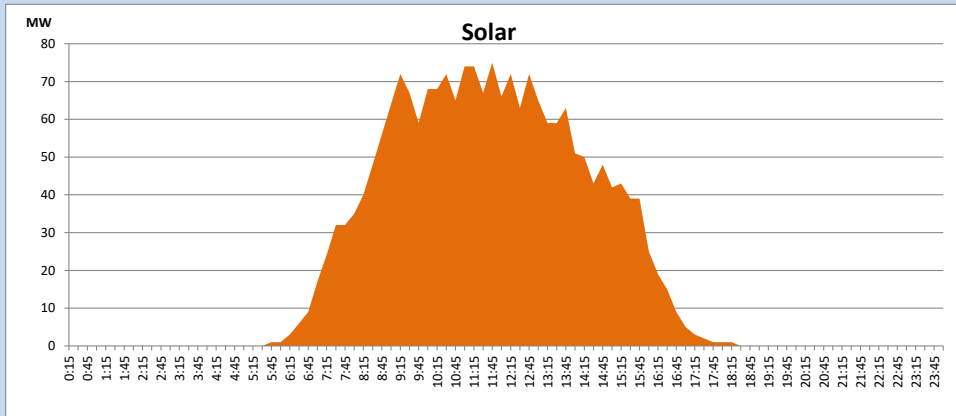
Based on Telemetered Power Stations only



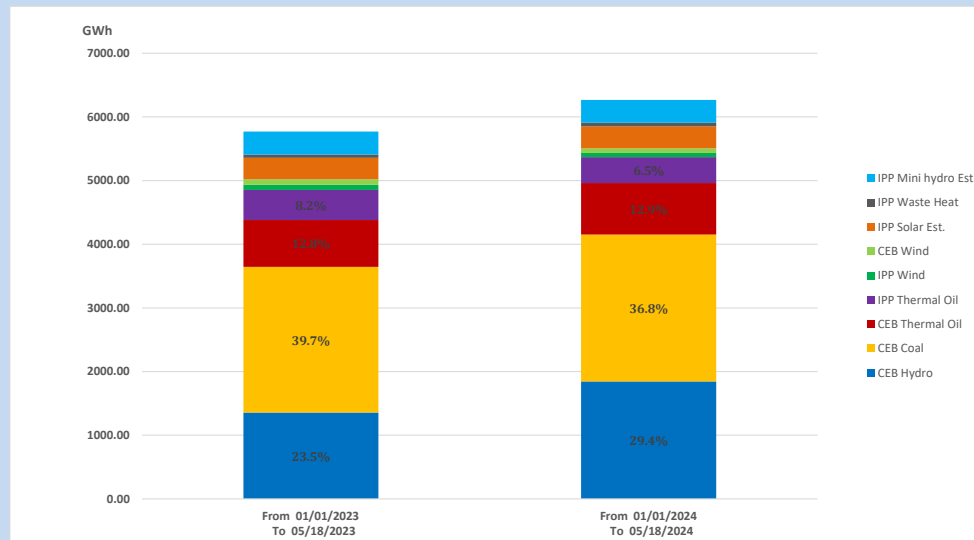
Solar Generation during

May 18, 2024

Based on Telemetered Power Stations only



15. Cumulative Dispatch Comparison with Last Year



Cumulative dispatch
 From 01/01/2023 To 05/18/2023
 From 01/01/2024 To 05/18/2024

5771 GWh
 6266 GWh

The above figures are including contribution from roof top solar, non telemetered solar and mini hydro plants)
 Unused energy due to power cuts has been excluded in 2023

Thermal Plant Fuel types

Table 08

Power Station	Primary Fuel
CEB Thermal	
Sapugaskanda 1	Heavy Fuel
Sapugaskanda 2	Heavy Fuel
Kelanitissa Small Gas Turbines	Auto Diesel
GT 7 - Kelanitissa	Auto Diesel
Kelanitissa CCY	Naphtha or Diesel
Lakvijaya 1	Coal
Lakvijaya 2	Coal
Lakvijaya 3	Coal
Uthuru Janani	Heavy Fuel
Barge CEB	Heavy Fuel
KCCPS -2	Auto Diesel

Power Station	Primary Fuel
Private Thermal	
West Coast	Auto Diesel / Heavy Fuel
Sobadhanavi	Auto Diesel

Major Incidents reported during the day

May 18, 2024

- 1) Rantambe unit 01 and 02 generation limited to 15MW from 20:40hrs and 16:40hrs respectively, due to the blockage of generator coolers. Both units are yet to resume full load.