

Generation and Reservoirs Statistics

June 17, 2024



PUBLIC UTILITIES COMMISSION OF SRI LANKA

1. Daily Generation Mix in MWh

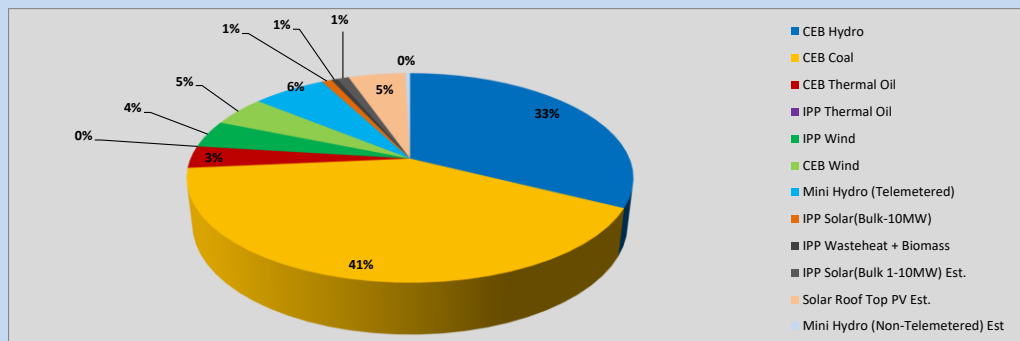


Table 01

	Generation (MWh)
CEB Hydro	15,127
CEB Coal	19,212
CEB Thermal Oil	1,590
IPP Thermal Oil	-
IPP Wind	1,974
CEB Wind	2,200
Mini Hydro (Telemetered)	2,960
IPP Solar (Bulk)	399
IPP Waste heat + Biomass	246
Total Generation (Excluding estimated figures)	43,708
* Estimated unserved energy	0
* Estimated Mini Hydro (Non telemetered)	178
* Estimated IPP Solar PV (Bulk 1-10MW)	472
* Estimated Solar Roof Top PV	2320
Total Generation (Including estimated figures)	46,678

* Estimated figures of CEB generation report

Table 02

	Installed Capacity (MW)
CEB Hydro	1533
CEB Coal	810
CEB Thermal Oil	773.1
IPP Thermal Oil (West Coast)	490
IPP Wind	163
CEB Wind	100
Mini Hydro	422
IPP Waste heat + Biomass	54
IPP Solar	137
Rooftop Solar (Ordinary)	326
Rooftop Solar (LT Bulk)	285
Rooftop Solar (HT Bulk)	79

Data Source - Monthly Review Report [Jan-2024]

2. Cumulative Dispatch

Following data excludes the contribution from roof top solar, non telemetered solar and mini hydro plants

Table 03 - Current Month

Category	Dispatch (GWh)	
CEB Hydro	269	35.14%
CEB Coal	266	34.73%
CEB Thermal Oil	25	3.22%
IPP Thermal	12	1.59%
SPP Wind	31	3.98%
CEB Wind	35	4.51%
Mini Hydro *	74	9.61%
IPP Solar *	51	6.61%
IPP Waste heat + BMP	5	0.60%
Total	767	

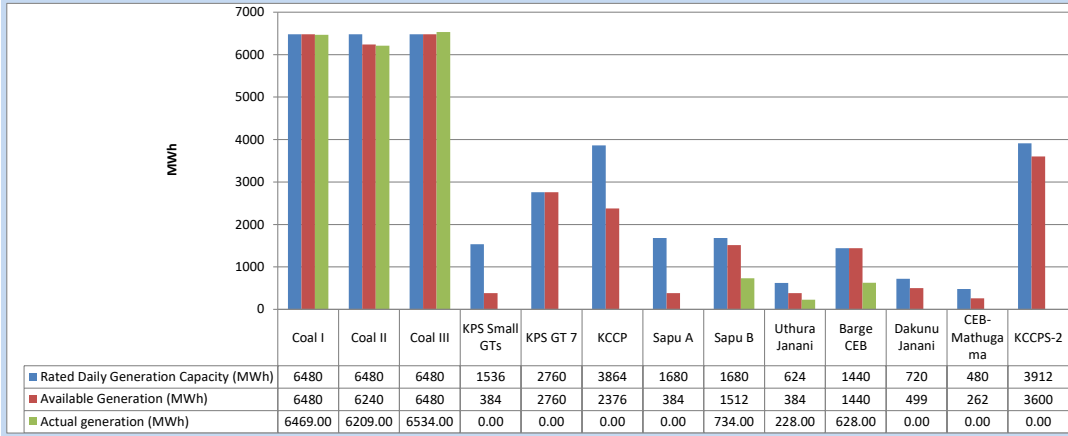
Table 04 - Current Year

Category	Dispatch (GWh)	
CEB Hydro	2,309	30.30%
CEB Coal	2,802	36.77%
CEB Thermal Oil	803	10.54%
IPP Thermal	429	5.64%
SPP Wind	121	1.59%
CEB Wind	129	1.69%
Mini Hydro *	505	6.63%
IPP Solar *	452	5.93%
IPP Waste heat	69	0.91%
Total	7,619	

*Including estimated contribution from non telemetered plants

3. CEB owned Thermal Plant Dispatch

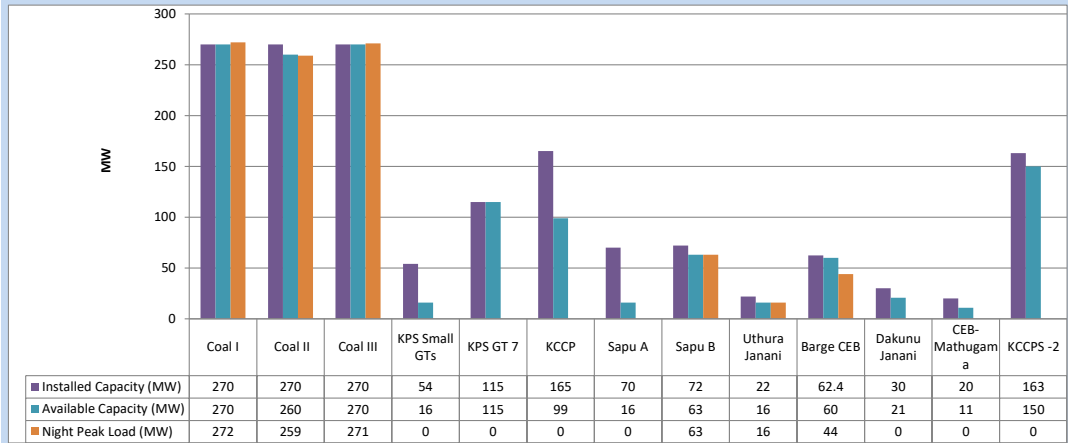
June 17, 2024



Available Generation is estimated based on plant availability at 6.00am on

June 18, 2024

4. CEB owned Thermal Plant Loading at the Night Peak

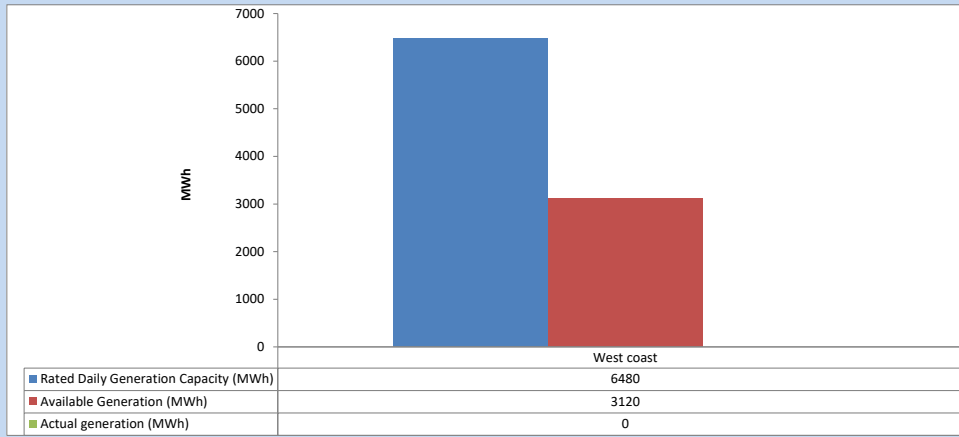


Plant availability is recorded at 6.00 am on

June 18, 2024

5. IPP owned Thermal Plant Dispatch

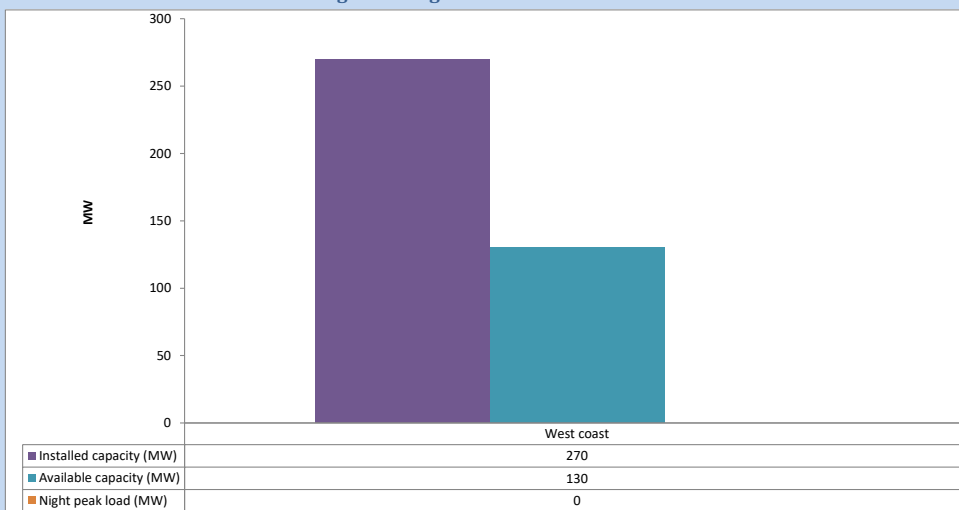
June 17, 2024



Available Generation is estimated based on plant availability at 6.00am on

June 18, 2024

6. IPP owned Thermal Plant Loading at the Night Peak

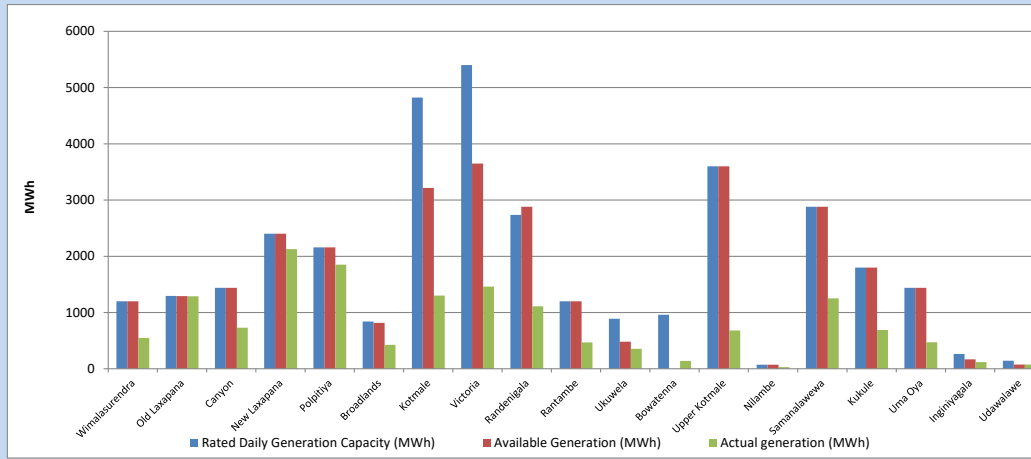


Plant availability is recorded at 6.00 am on

June 18, 2024

7. Major Hydro Plant Dispatch

June 17, 2024

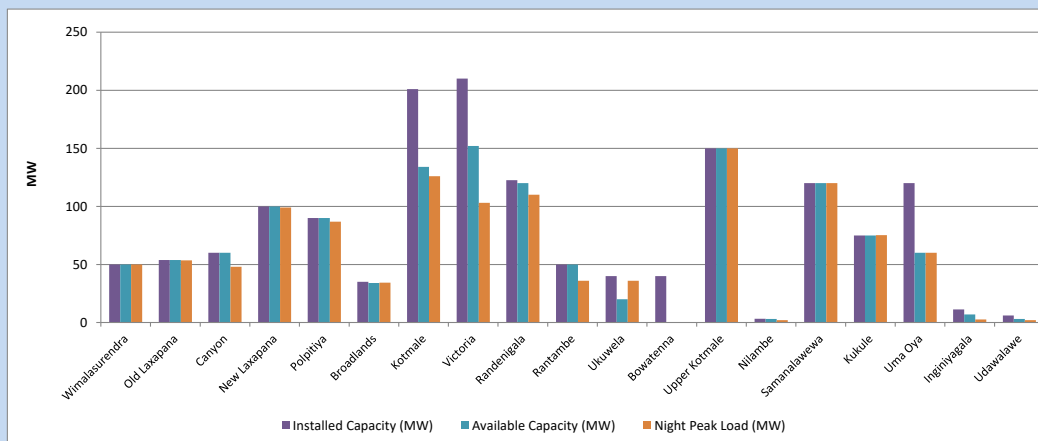


Available Generation is estimated based on plant availability at 6.00am on
Broadlands power plant is operating in the Commissioning Stage

June 18, 2024

8. Major Hydro Plant Loading at Night Peak

June 17, 2024



Plant availability is recorded at 6.00 am on
Broadlands power plant is operating in the Commissioning Stage

June 18, 2024

9. Summary of Major Plant performance

Table 05

Plant	Maximum Available Total Capacity	Plant Availability	Night peak Load	Plant Dispatch
	(MW)	(MW)	(MW)	(MWh)
Wimalasurendra	50	50	50	548
Old Laxapana	54	54	54	1,288
Canyon	60	60	48	730
New Laxapana	100	100	99	2,128
Polpitiya	90	90	87	1,850
Broadlands	35	34	34	426
Kotmale	201	134	126	1,300
Victoria	210	152	103	1,462
Randenigala	123	120	110	1,112
Rantambe	50	50	36	468
Ukuwela	40	20	36	355
Bowatenna	40	0	0	141
Upper Kotmale	150	150	150	682
Nilambe	3	3	2	30
Samanalawewa	120	120	120	1,253
Kukule	75	75	75	690
Uma Oya (Testing)	120	60	60	471
Inginiyagala	11	7	3	117
Udawalawe	6	3	2	76
Puttalam Coal I	270	270	272	6,469
Puttalam Coal II	270	260	259	6,209
Puttalam Coal III	270	270	271	6,534
KPS Small GTs	54	16	0	0
KPS GT 7	115	115	0	0
KCCP	165	99	0	0
Sapugaskanda A	70	16	0	0
Sapugaskanda B	72	63	63	734
Uthura Janani	22	16	16	228
Barge CEB	62	60	44	628
CEB-Hambantota	30	21	0	0
CEB-Mathugama	20	11	0	0
ACE Matara	24	0	0	0
Asia Power	50	0	0	0
KCCPS -2	163	150	0	0
West Coast	270	130	0	0
Nothern Power	36	0	0	0
ACE Embilipitiya	93	0	0	0
Sobadhanavi	220	0	0	0
Total	3,594	2,779	2,456	43,708

Note-

Plant availability is the availability recorded at 6 am on
Installed Capacity is sourced from CEB Annual Report- 2022

June 18, 2024

10. Contribution to the Night Peak in MW

June 17, 2024

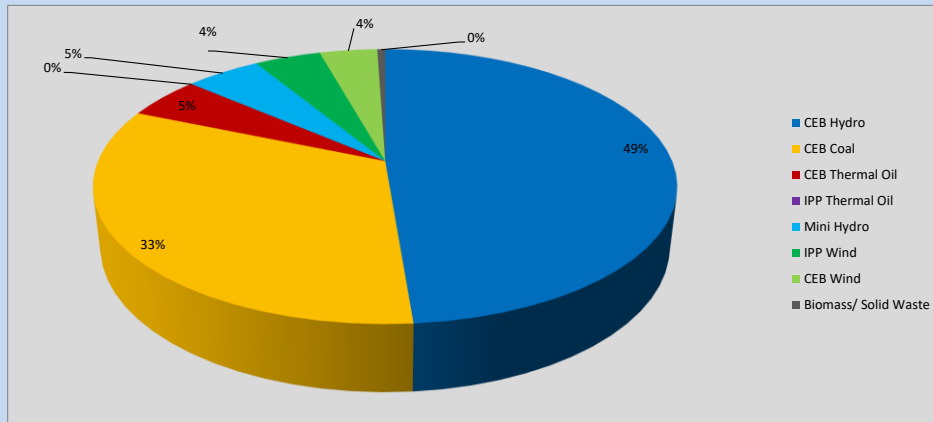


Table 06

CEB Hydro	1199	MW
CEB Coal	802	MW
CEB Thermal Oil	123	MW
IPP Thermal Oil	0	MW
Mini Hydro (Telemetered)	122	MW
IPP Wind	107.9	MW
CEB Wind	93.9	MW
Biomass/ Solid Waste	13	MW

Recorded Peak Demand Data

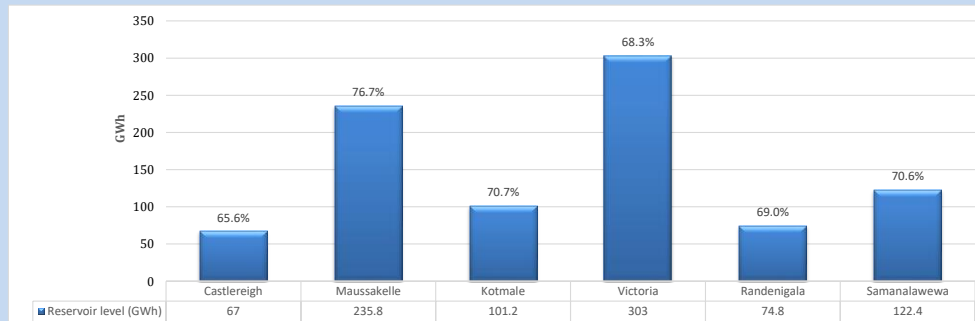
Table 07

Night Peak*	2,461	MW
Day Peak Maximum Demand	2,133	MW
Day Peak Minimum Demand	1,709	MW
Off Peak Minimum Demand	1,398	MW

Above figures are excluding contribution from roof top solar, non telemetered solar and mini hydro plants

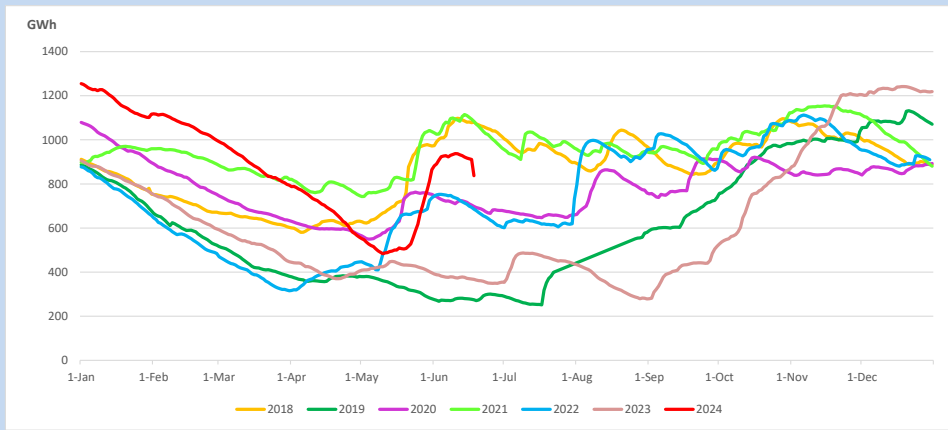
Reservoir Levels -

as at 06.00 Hr on June 18, 2024

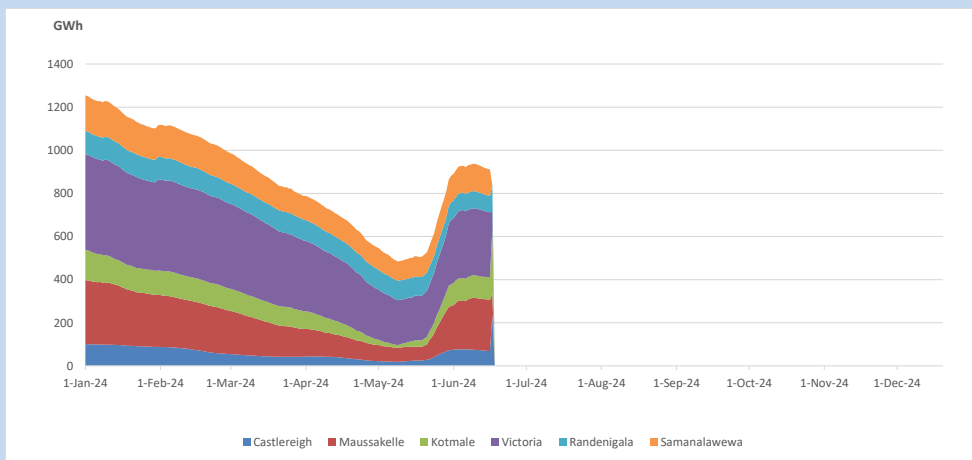


Total Reservoir Level 904.2 GWh
 % of Total capacity 70.7%

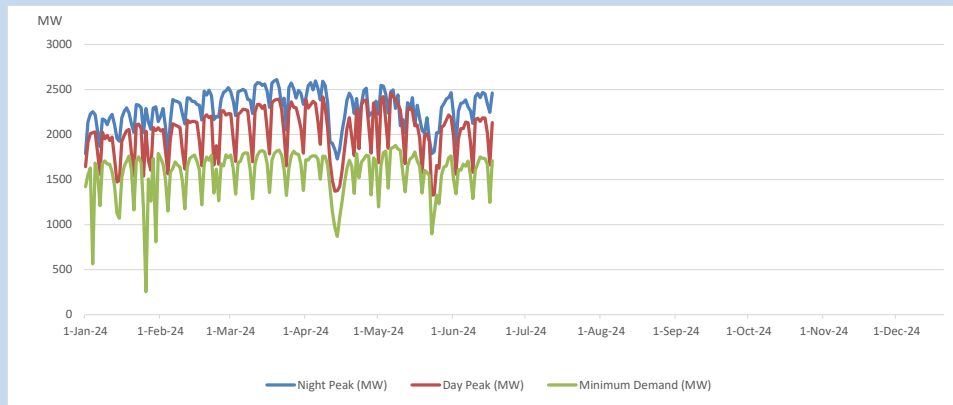
11. Comparison of Total Reservoir Storage Levels with Past Years



12. Variation of Major Hydro Reservoir Levels in the current year (GWh)



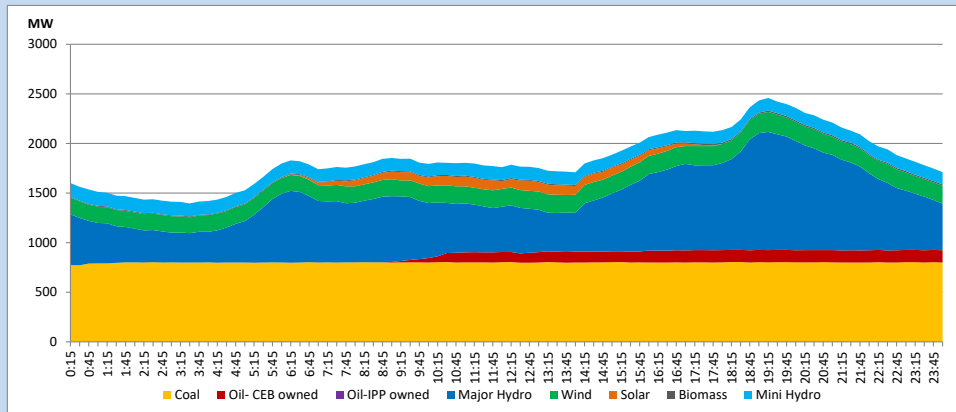
13. Variation of Demand during the current year



The above figures are excluding contribution from roof top solar, non telemetered solar and mini hydro plants

14. Daily Load Curve

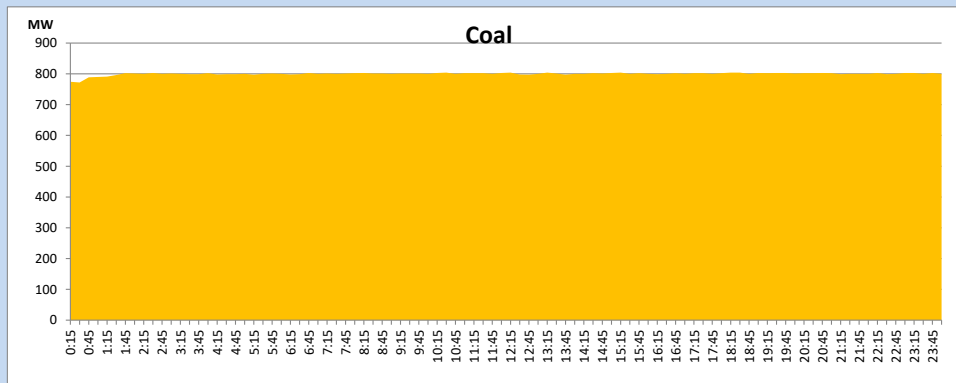
June 17, 2024



Solar and wind data is based on Telemetered Power Stations only

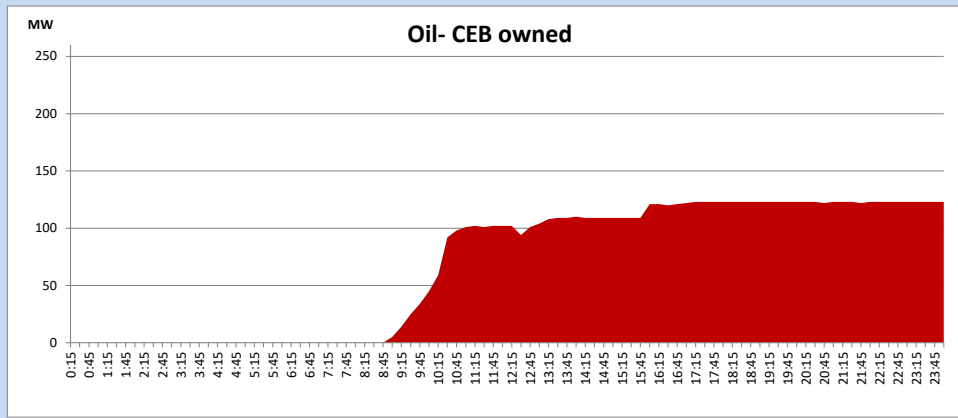
Coal Generation during

June 17, 2024



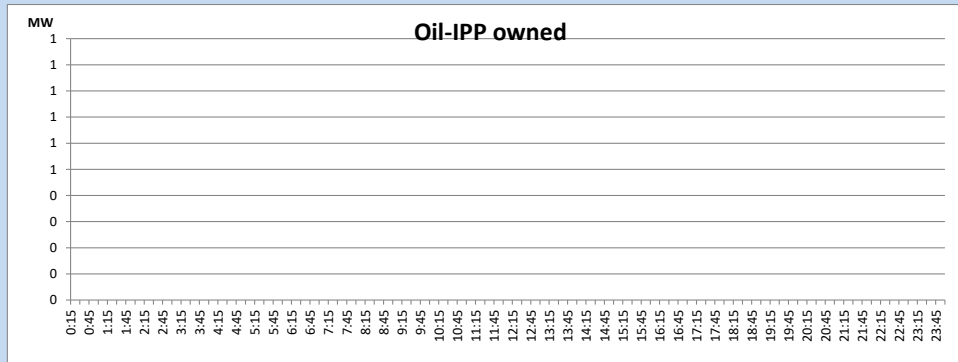
CEB Oil Plant Generation during

June 17, 2024



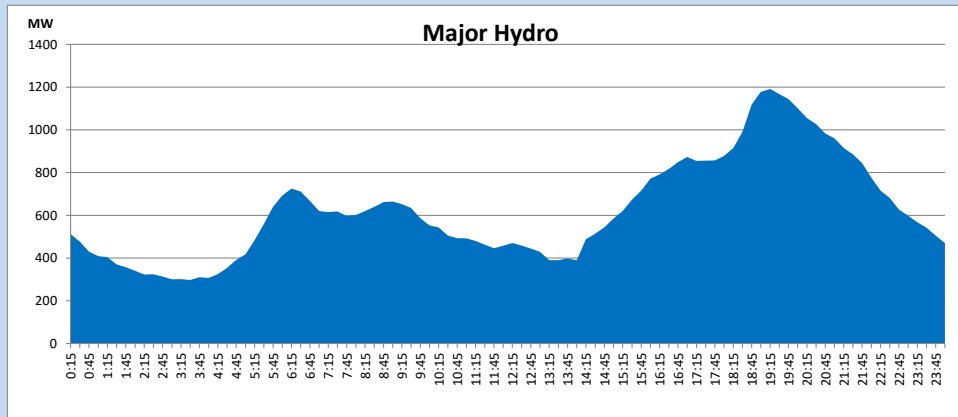
IPP Oil Plant Generation during

June 17, 2024



Major Hydro Generation during

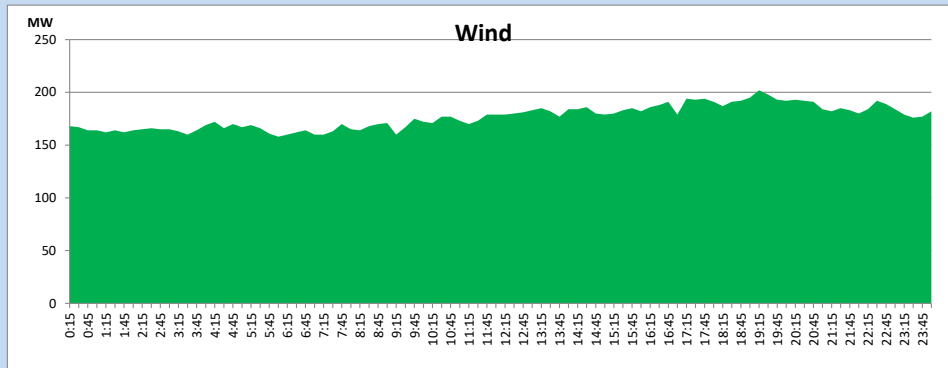
June 17, 2024



Wind Generation during

June 17, 2024

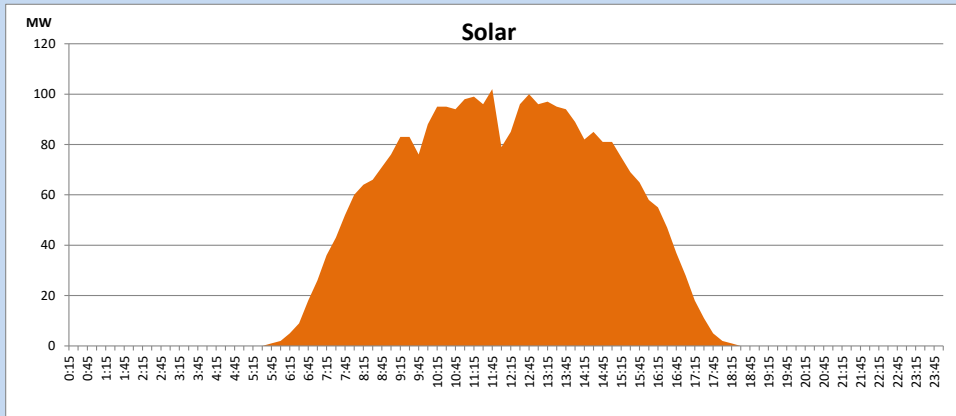
Based on Telemetered Power Stations only



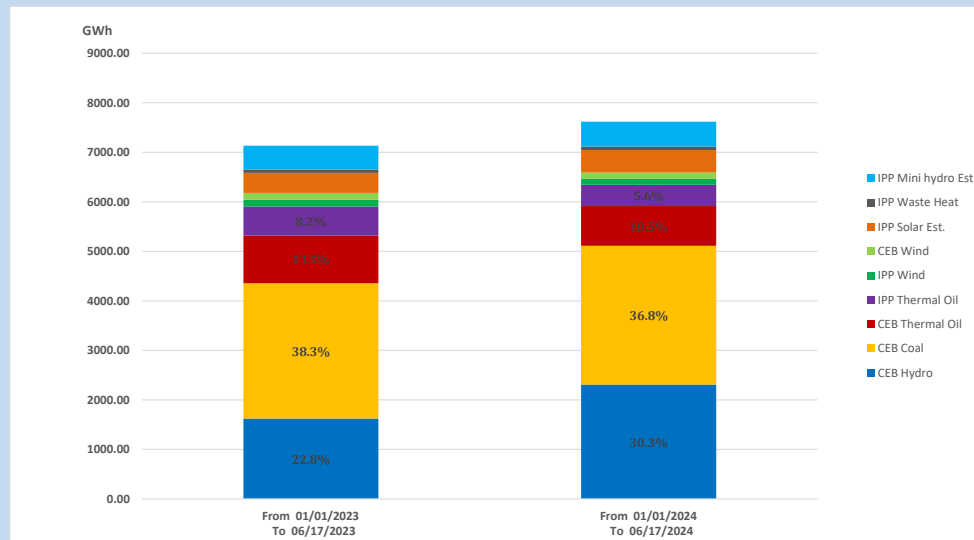
Solar Generation during

June 17, 2024

Based on Telemetered Power Stations only



15. Cumulative Dispatch Comparison with Last Year



Cumulative dispatch

From 01/01/2023 To 06/17/2023

7134 GWh

From 01/01/2024 To 06/17/2024

7619 GWh

The above figures are including contribution from roof top solar, non telemetered solar and mini hydro plants)

Unserviced energy due to power cuts has been excluded in 2023

Thermal Plant Fuel types

Table 08

Power Station	Primary Fuel
CEB Thermal	
Sapugaskanda 1	Heavy Fuel
Sapugaskanda 2	Heavy Fuel
Kelanitissa Small Gas Turbines	Auto Diesel
GT 7 - Kelanitissa	Auto Diesel
Kelanitissa CCY	Naphtha or Diesel
Lakvijaya 1	Coal
Lakvijaya 2	Coal
Lakvijaya 3	Coal
Uthuru Janani	Heavy Fuel
Barge CEB	Heavy Fuel
KCCPS -2	Auto Diesel

Power Station	Primary Fuel
Private Thermal	
West Coast	Auto Diesel / Heavy Fuel
Sobadhanavi	Auto Diesel

Major Incidents reported during the day

June 17, 2024

1) Nil.