

# Generation and Reservoirs Statistics

May 17, 2024



PUBLIC UTILITIES COMMISSION OF SRI LANKA

## 1. Daily Generation Mix in MWh

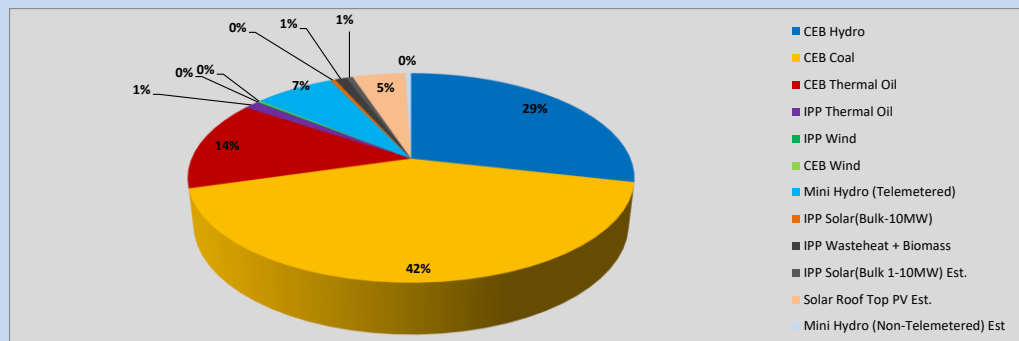


Table 01

	Generation (MWh)
CEB Hydro	13,280
CEB Coal	19,486
CEB Thermal Oil	6,459
IPP Thermal Oil	598
IPP Wind	72
CEB Wind	72
Mini Hydro (Telemetered)	3,223
IPP Solar (Bulk)	191
IPP Waste heat + Biomass	474
<b>Total Generation (Excluding estimated figures)</b>	<b>43,855</b>
* Estimated unserved energy	0
* Estimated Mini Hydro (Non telemetered)	233
* Estimated IPP Solar PV (Bulk 1-10MW)	261
* Estimated Solar Roof Top PV	2130
<b>Total Generation (Including estimated figures)</b>	<b>46,479</b>

\* Estimated figures of CEB generation report

Table 02

	Installed Capacity (MW)
CEB Hydro	1530
CEB Coal	810
CEB Thermal Oil	773.1
IPP Thermal Oil (West Coast)	270
IPP Wind	148
CEB Wind	100
Mini Hydro	416
IPP Waste heat + Biomass	50
IPP Solar	110
Rooftop Solar (Ordinary)	250
Rooftop Solar (LT Bulk)	234
Rooftop Solar (HT Bulk)	56

Data Source - Monthly Review Report [Jan-2024]

## 2. Cumulative Dispatch

Following data excludes the contribution from roof top solar, non telemetered solar and mini hydro plants

Table 03 - Current Month

Category	Dispatch (GWh)	
CEB Hydro	190	23.39%
CEB Coal	330	40.63%
CEB Thermal Oil	177	21.87%
IPP Thermal	1	0.11%
SPP Wind	7	0.81%
CEB Wind	10	1.18%
Mini Hydro *	44	5.46%
IPP Solar *	47	5.81%
IPP Waste heat + BMP	6	0.75%
<b>Total</b>	<b>811</b>	

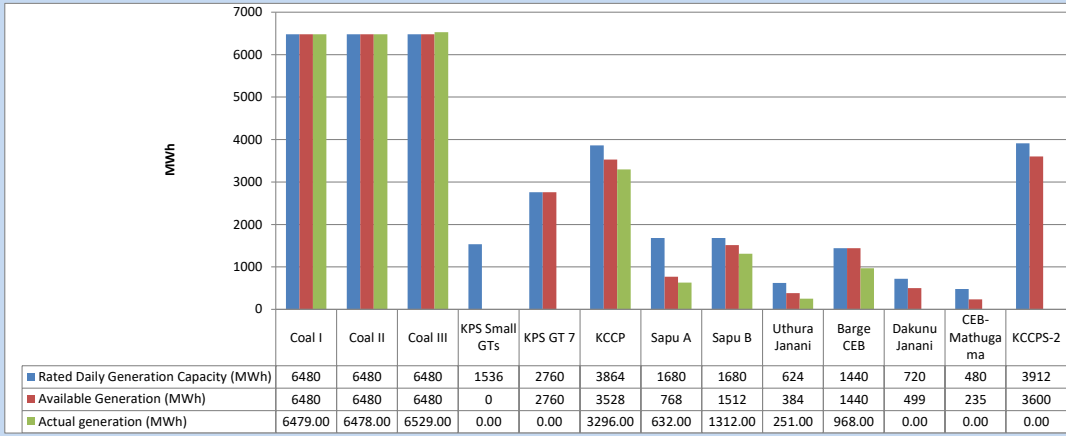
Table 04 - Current Year

Category	Dispatch (GWh)	
CEB Hydro	1,831	29.42%
CEB Coal	2,290	36.81%
CEB Thermal Oil	803	12.90%
IPP Thermal	409	6.57%
SPP Wind	64	1.03%
CEB Wind	73	1.17%
Mini Hydro *	355	5.71%
IPP Solar *	343	5.51%
IPP Waste heat	55	0.88%
<b>Total</b>	<b>6,223</b>	

\*Including estimated contribution from non telemetered plants

### 3. CEB owned Thermal Plant Dispatch

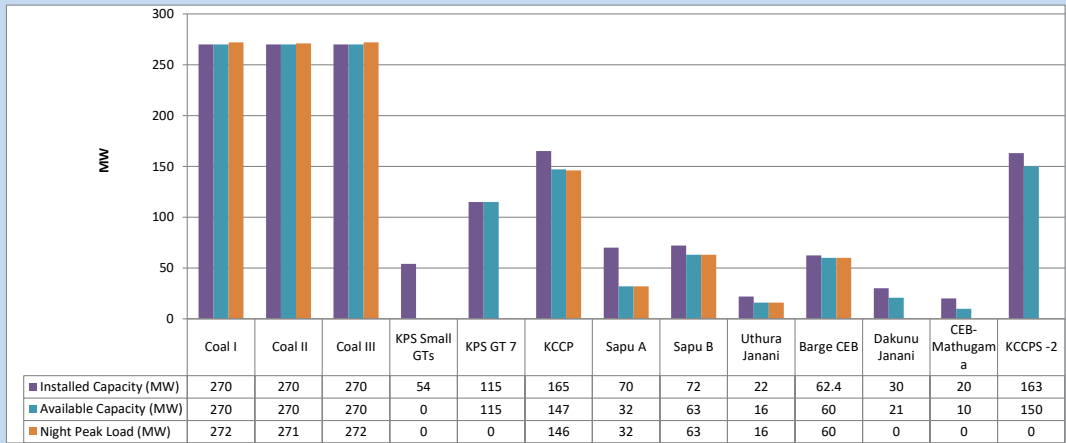
May 17, 2024



Available Generation is estimated based on plant availability at 6.00am on

May 18, 2024

### 4. CEB owned Thermal Plant Loading at the Night Peak

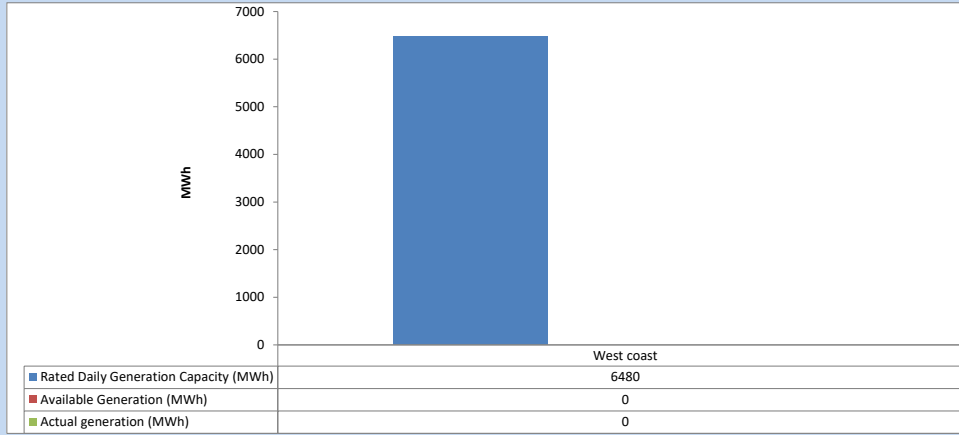


Plant availability is recorded at 6.00 am on

May 18, 2024

### 5. IPP owned Thermal Plant Dispatch

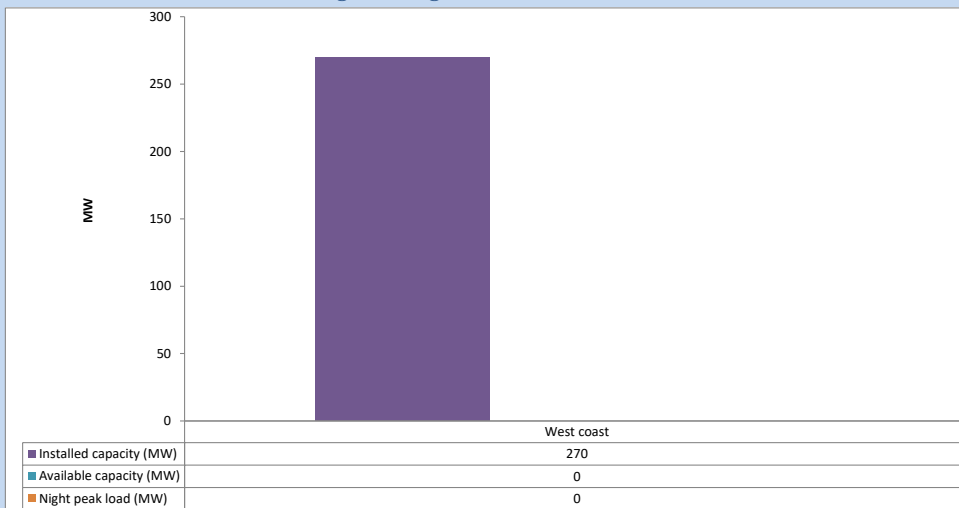
May 17, 2024



Available Generation is estimated based on plant availability at 6.00am on

May 18, 2024

### 6. IPP owned Thermal Plant Loading at the Night Peak

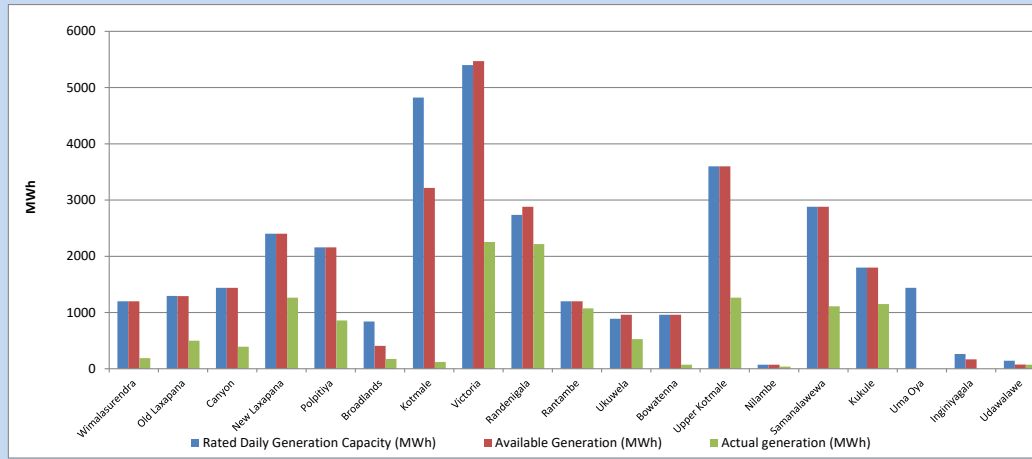


Plant availability is recorded at 6.00 am on

May 18, 2024

## 7. Major Hydro Plant Dispatch

May 17, 2024

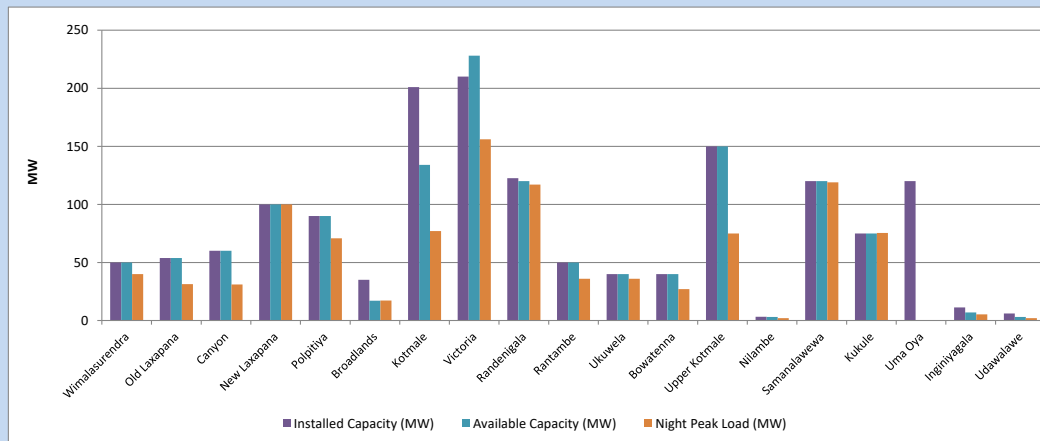


Available Generation is estimated based on plant availability at 6.00am on  
Broadlands power plant is operating in the Commissioning Stage

May 18, 2024

## 8. Major Hydro Plant Loading at Night Peak

May 17, 2024



Plant availability is recorded at 6.00 am on  
Broadlands power plant is operating in the Commissioning Stage

May 18, 2024

## 9. Summary of Major Plant performance

Table 05

Plant	Maximum Available Total Capacity	Plant Availability	Night peak Load	Plant Dispatch
	(MW)	(MW)	(MW)	(MWh)
Wimalasurendra	50	50	40	190
Old Laxapana	54	54	31	500
Canyon	60	60	31	391
New Laxapana	100	100	100	1,265
Polpitiya	90	90	71	860
Broadlands	35	17	17	174
Kotmale	201	134	77	120
Victoria	210	228	156	2,253
Randenigala	123	120	117	2,217
Rantambe	50	50	36	1,073
Ukuwela	40	40	36	528
Bowatenna	40	40	27	72
Upper Kotmale	150	150	75	1,264
Nilambe	3	3	2	38
Samanalawewa	120	120	119	1,111
Kukule	75	75	75	1,151
Uma Oya (Testing )	120	0	0	0
Inginiyagala	11	7	5	0
Udawalawe	6	3	2	73
Puttalam Coal I	270	270	272	6,479
Puttalam Coal II	270	270	271	6,478
Puttalam Coal III	270	270	272	6,529
KPS Small GTs	54	0	0	0
KPS GT 7	115	115	0	0
KCCP	165	147	146	3,296
Sapugaskanda A	70	32	32	632
Sapugaskanda B	72	63	63	1,312
Uthura Janani	22	16	16	251
Barge CEB	62	60	60	968
CEB-Hambantota	30	21	0	0
CEB-Mathugama	20	10	0	0
ACE Matara	24	0	0	0
Asia Power	50	0	0	0
KCCPS -2	163	150	0	0
West Coast	270	0	0	0
Nothern Power	36	0	0	0
ACE Embilipitiya	93	0	0	0
Sobadhanavi	230	0	0	598
<b>Total</b>	<b>3,594</b>	<b>2,765</b>	<b>2,310</b>	<b>43,855</b>

Note-

Plant availability is the availability recorded at 6 am on  
Installed Capacity is sourced from CEB Annual Report- 2022

May 18, 2024

### 10. Contribution to the Night Peak in MW

May 17, 2024

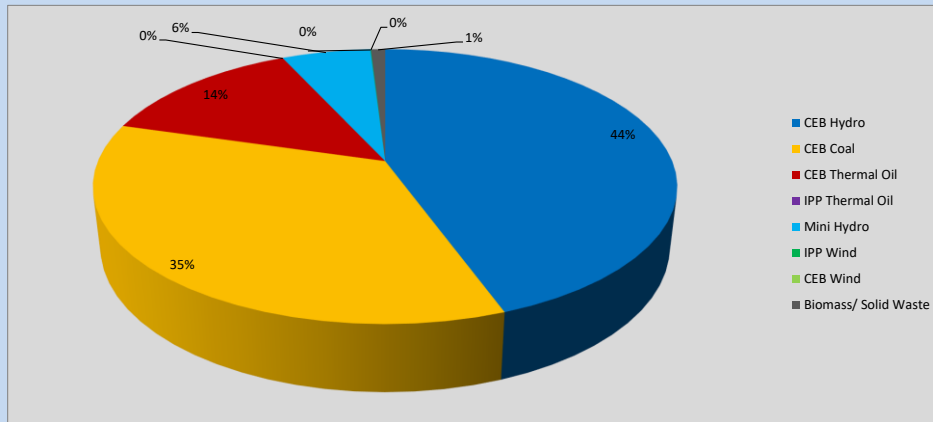


Table 06

CEB Hydro	1033	MW
CEB Coal	815	MW
CEB Thermal Oil	317	MW
IPP Thermal Oil	0	MW
Mini Hydro (Telemetered)	137	MW
IPP Wind	0.9	MW
CEB Wind	0	MW
Biomass/ Solid Waste	22	MW

### Recorded Peak Demand Data

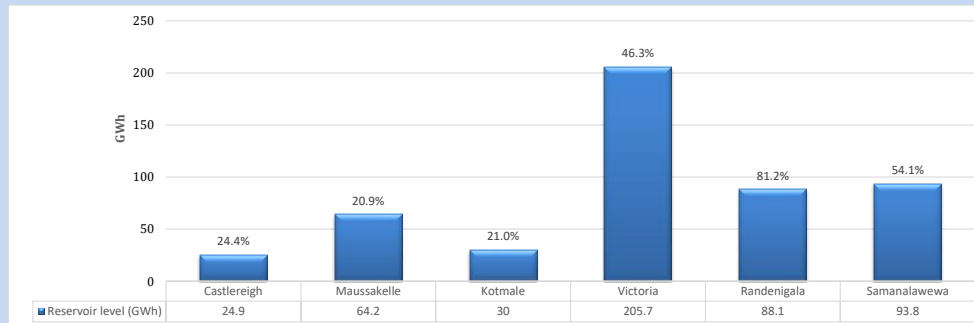
Table 07

Night Peak*	2,324	MW
Day Peak Maximum Demand	2,107	MW
Day Peak Minimum Demand	1,705	MW
Off Peak Minimum Demand	1,377	MW

Above figures are excluding contribution from roof top solar, non telemetered solar and mini hydro plants

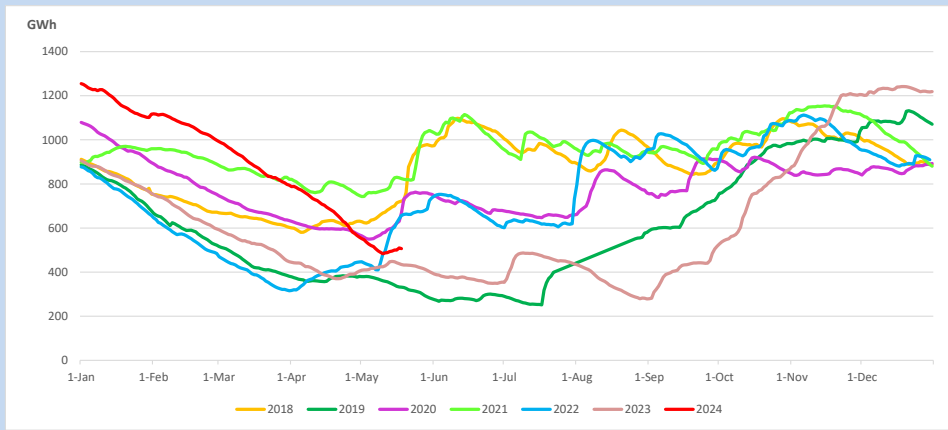
### Reservoir Levels -

as at 06.00 Hr on May 18, 2024

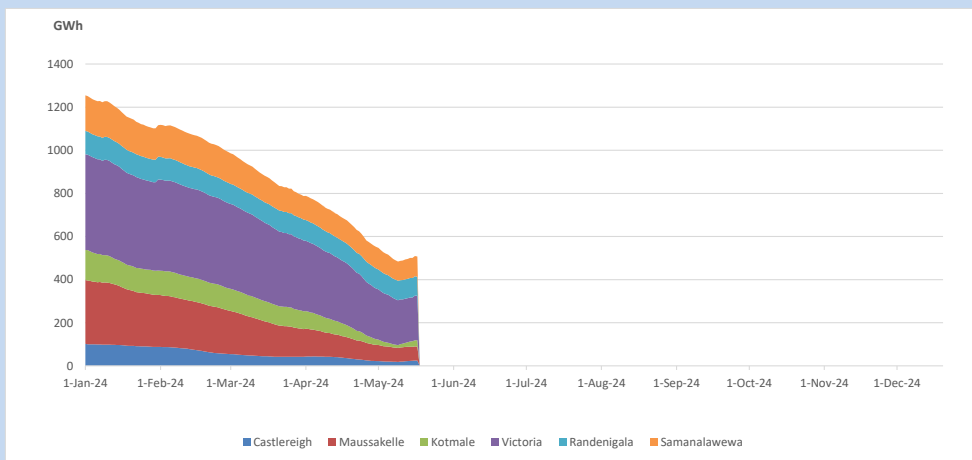


Total Reservoir Level 506.7 GWh  
% of Total capacity 39.6%

### 11. Comparison of Total Reservoir Storage Levels with Past Years

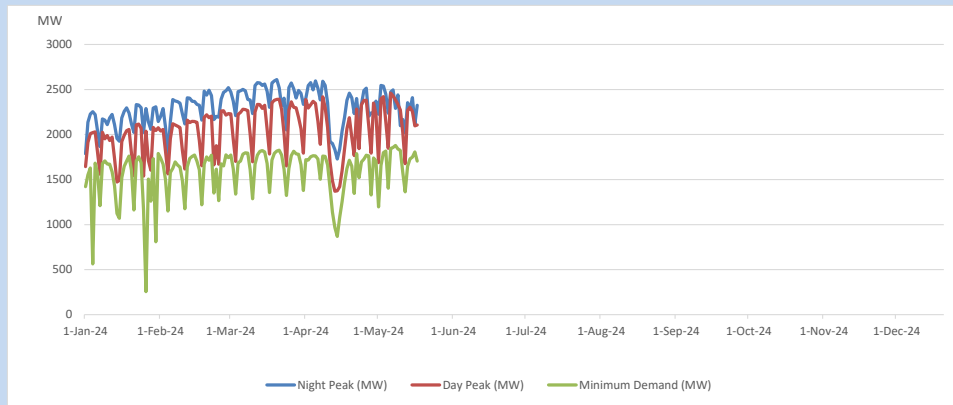


### 12. Variation of Major Hydro Reservoir Levels in the current year (GWh)





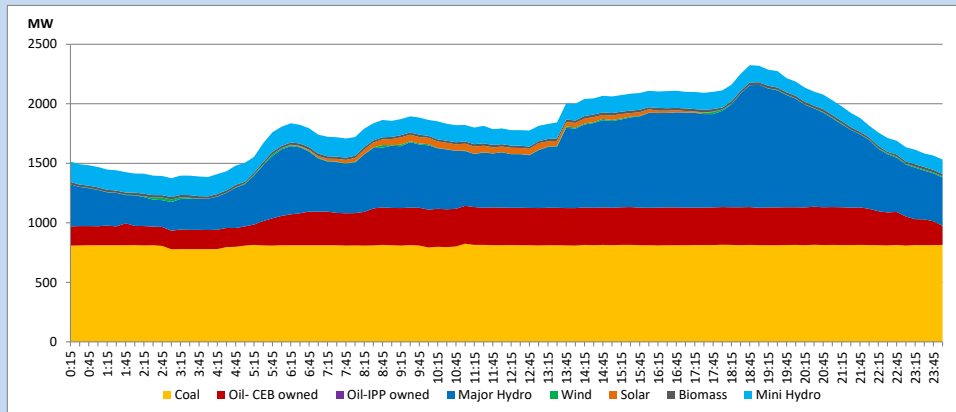
### 13. Variation of Demand during the current year



The above figures are excluding contribution from roof top solar, non telemetered solar and mini hydro plants

### 14. Daily Load Curve

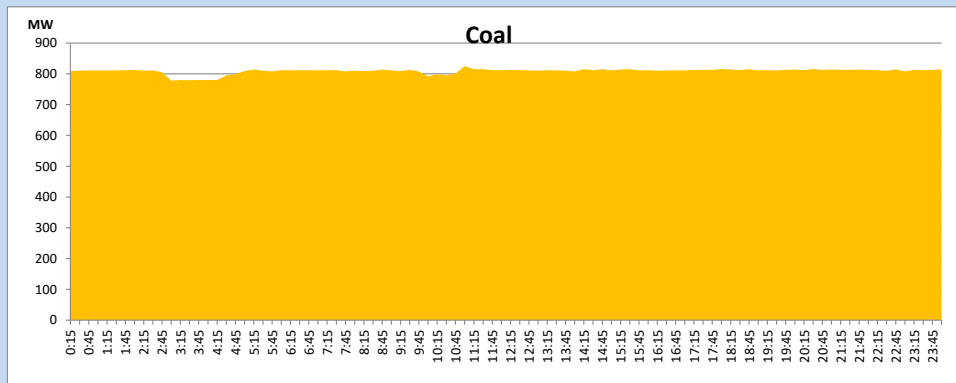
May 17, 2024



Solar and wind data is based on Telemetered Power Stations only

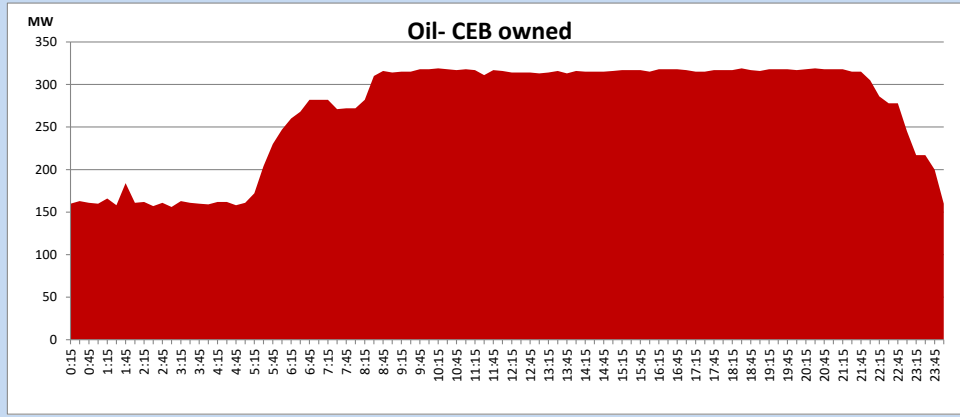
### Coal Generation during

May 17, 2024



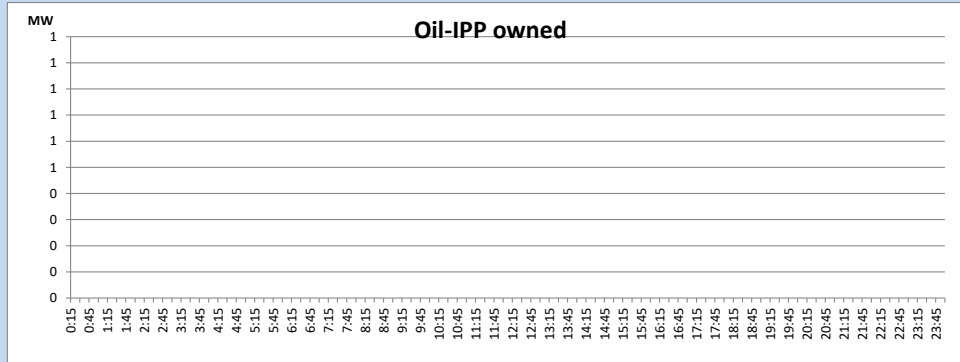
CEB Oil Plant Generation during

May 17, 2024



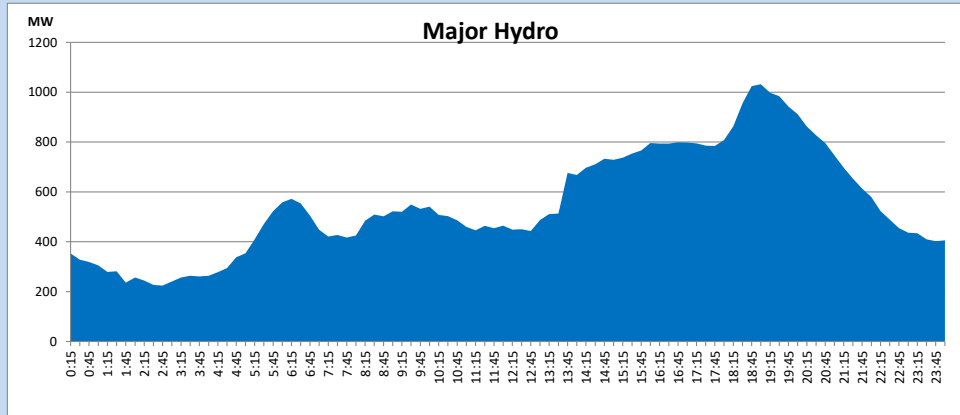
IPP Oil Plant Generation during

May 17, 2024



Major Hydro Generation during

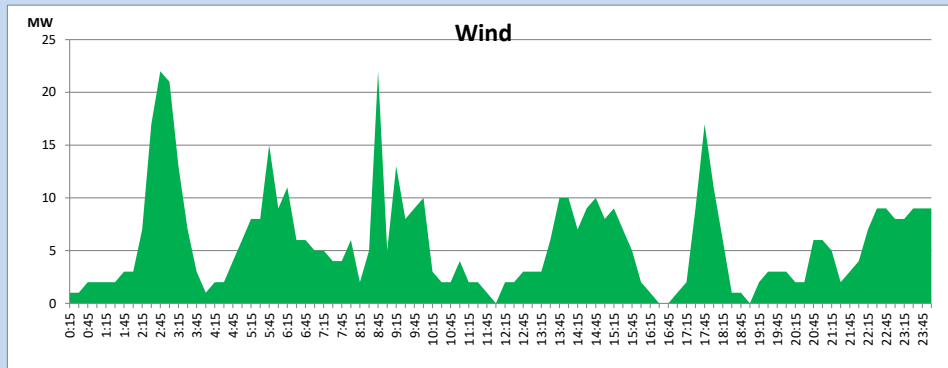
May 17, 2024



### Wind Generation during

May 17, 2024

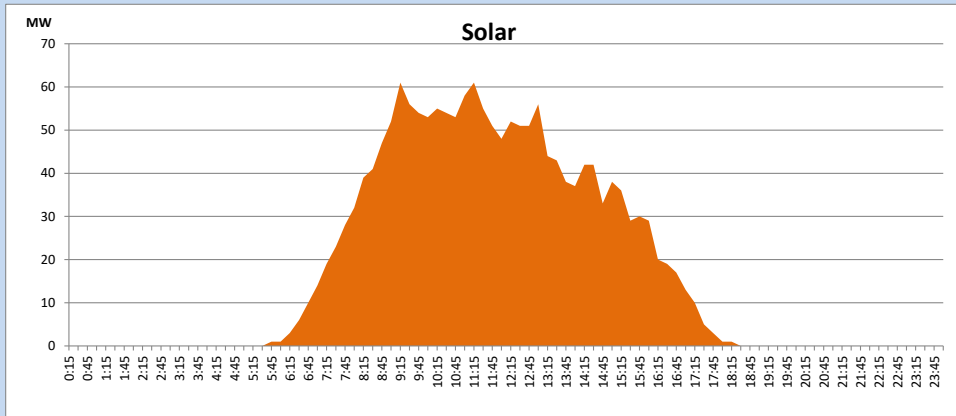
Based on Telemetered Power Stations only



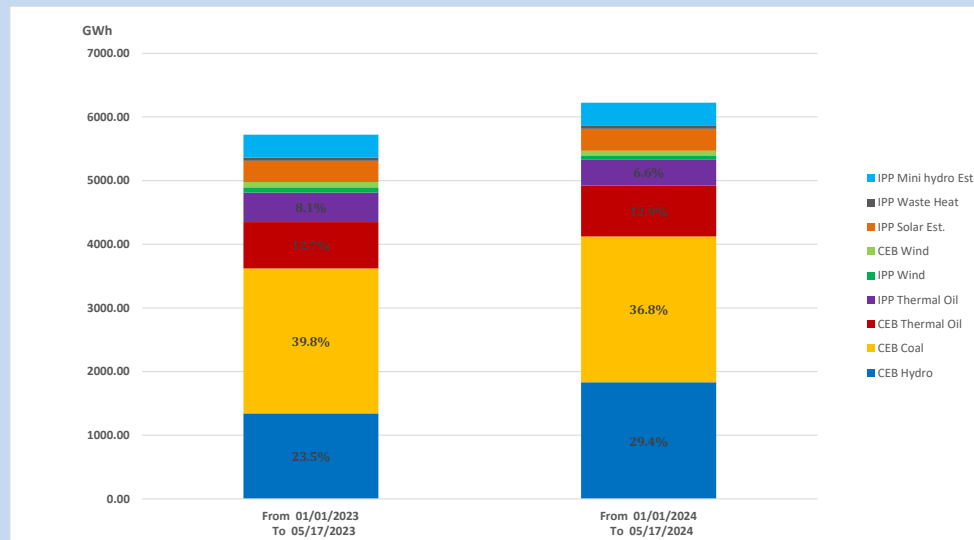
### Solar Generation during

May 17, 2024

Based on Telemetered Power Stations only



### 15. Cumulative Dispatch Comparison with Last Year



Cumulative dispatch  
 From 01/01/2023 To 05/17/2023  
 From 01/01/2024 To 05/17/2024

5722 GWh  
 6223 GWh

The above figures are including contribution from roof top solar, non telemetered solar and mini hydro plants)  
 Unused energy due to power cuts has been excluded in 2023

Thermal Plant Fuel types

Table 08

Power Station	Primary Fuel
CEB Thermal	
Sapugaskanda 1	Heavy Fuel
Sapugaskanda 2	Heavy Fuel
Kelanitissa Small Gas Turbines	Auto Diesel
GT 7 - Kelanitissa	Auto Diesel
Kelanitissa CCY	Naphtha or Diesel
Lakvijaya 1	Coal
Lakvijaya 2	Coal
Lakvijaya 3	Coal
Uthuru Janani	Heavy Fuel
Barge CEB	Heavy Fuel
KCCPS -2	Auto Diesel

Power Station	Primary Fuel
Private Thermal	
West Coast	Auto Diesel / Heavy Fuel
Sobadhanavi	Auto Diesel

Major Incidents reported during the day

May 17, 2024

1) Nil.