

# Generation and Reservoirs Statistics

June 16, 2024



PUBLIC UTILITIES COMMISSION OF SRI LANKA

## 1. Daily Generation Mix in MWh

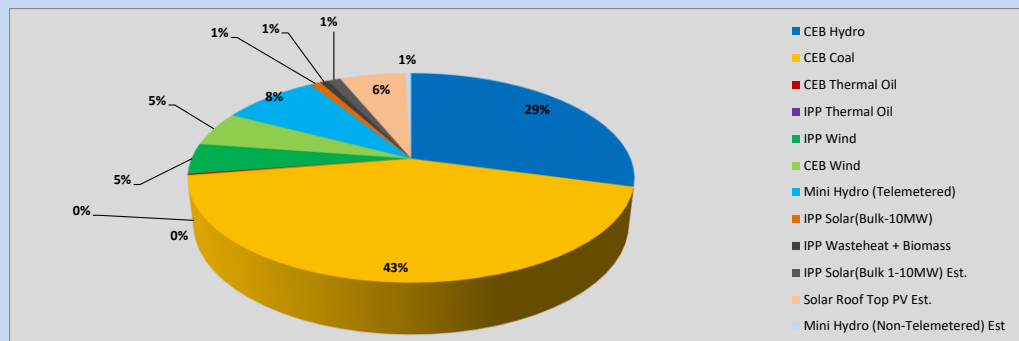


Table 01

	Generation (MWh)
CEB Hydro	11,933
CEB Coal	17,627
CEB Thermal Oil	76
IPP Thermal Oil	-
IPP Wind	1,919
CEB Wind	2,180
Mini Hydro (Telemetered)	3,423
IPP Solar (Bulk)	372
IPP Waste heat + Biomass	275
<b>Total Generation (Excluding estimated figures)</b>	<b>37,805</b>
* Estimated unserved energy	0
* Estimated Mini Hydro (Non telemetered)	206
* Estimated IPP Solar PV (Bulk 1-10MW)	463
* Estimated Solar Roof Top PV	2320
<b>Total Generation (Including estimated figures)</b>	<b>40,794</b>

\* Estimated figures of CEB generation report

Table 02

	Installed Capacity (MW)
CEB Hydro	1533
CEB Coal	810
CEB Thermal Oil	773.1
IPP Thermal Oil (West Coast)	490
IPP Wind	163
CEB Wind	100
Mini Hydro	422
IPP Waste heat + Biomass	54
IPP Solar	137
Rooftop Solar (Ordinary)	326
Rooftop Solar (LT Bulk)	285
Rooftop Solar (HT Bulk)	79

Data Source - Monthly Review Report [Jan-2024]

## 2. Cumulative Dispatch

Following data excludes the contribution from roof top solar, non telemetered solar and mini hydro plants

Table 03 - Current Month

Category	Dispatch (GWh)	
CEB Hydro	254	35.32%
CEB Coal	247	34.32%
CEB Thermal Oil	23	3.21%
IPP Thermal	12	1.70%
SPP Wind	29	3.96%
CEB Wind	32	4.50%
Mini Hydro *	71	9.79%
IPP Solar *	47	6.59%
IPP Waste heat + BMP	4	0.61%
<b>Total</b>	<b>720</b>	

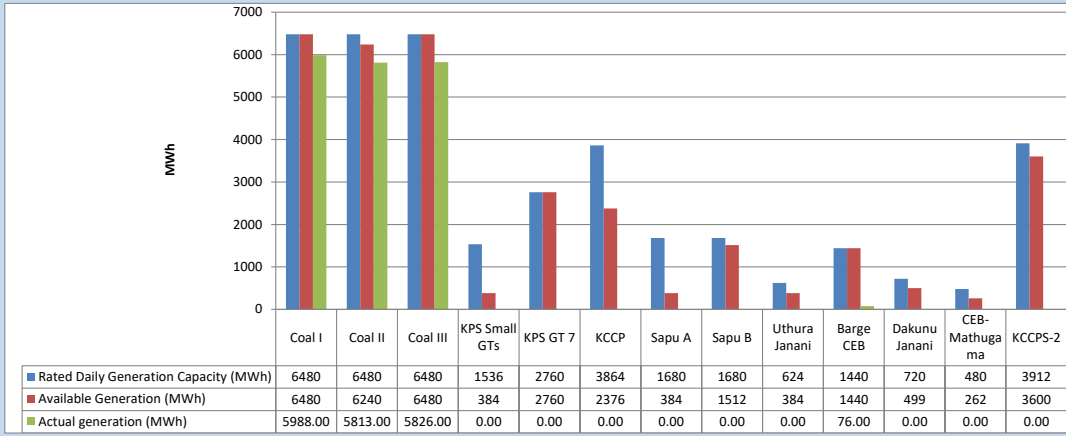
Table 04 - Current Year

Category	Dispatch (GWh)	
CEB Hydro	2,294	30.29%
CEB Coal	2,783	36.75%
CEB Thermal Oil	802	10.58%
IPP Thermal	429	5.67%
SPP Wind	119	1.58%
CEB Wind	126	1.67%
Mini Hydro *	502	6.63%
IPP Solar *	449	5.93%
IPP Waste heat	69	0.91%
<b>Total</b>	<b>7,573</b>	

\*Including estimated contribution from non telemetered plants

### 3. CEB owned Thermal Plant Dispatch

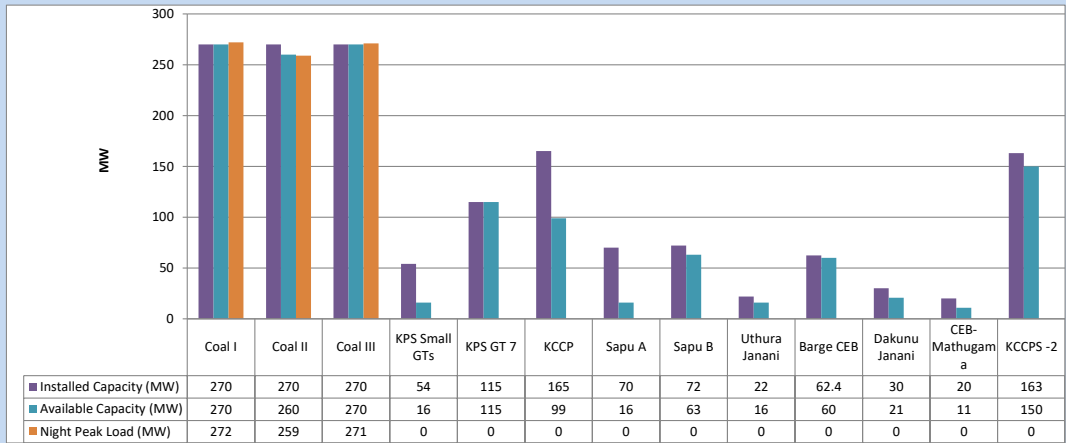
June 16, 2024



Available Generation is estimated based on plant availability at 6.00am on

June 17, 2024

### 4. CEB owned Thermal Plant Loading at the Night Peak

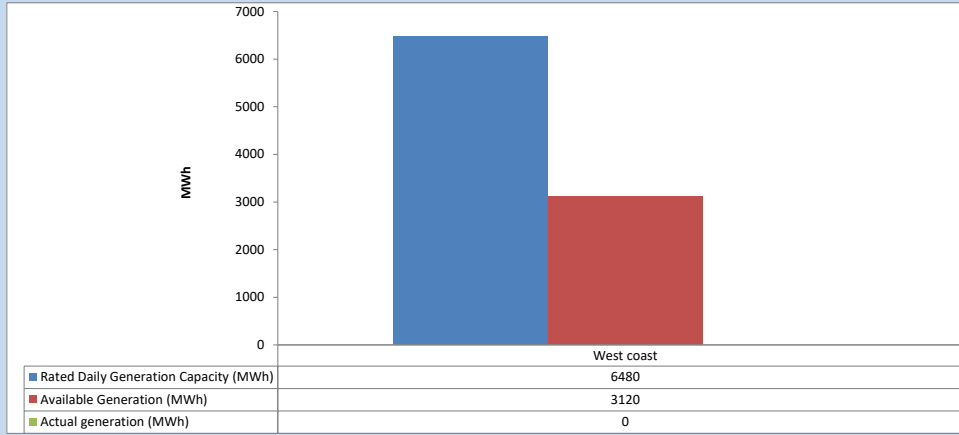


Plant availability is recorded at 6.00 am on

June 17, 2024

### 5. IPP owned Thermal Plant Dispatch

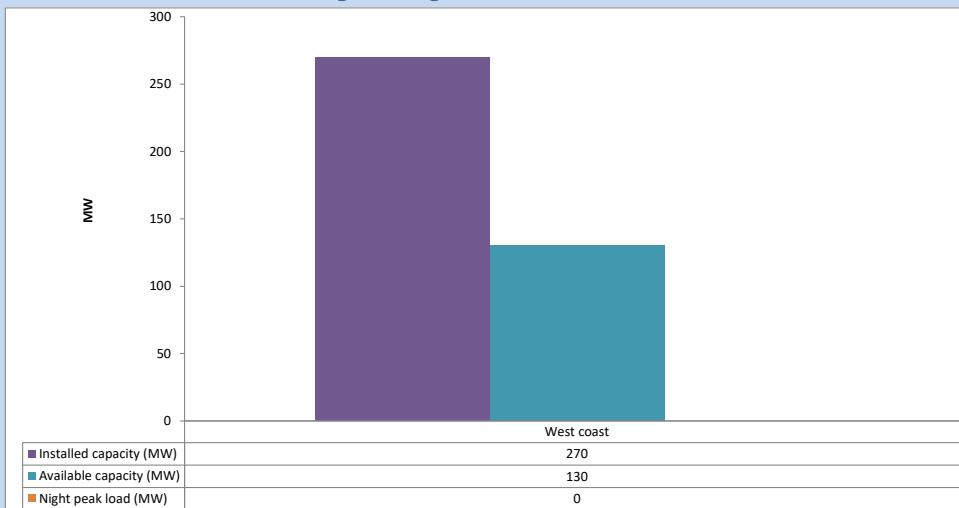
June 16, 2024



Available Generation is estimated based on plant availability at 6.00am on

June 17, 2024

### 6. IPP owned Thermal Plant Loading at the Night Peak

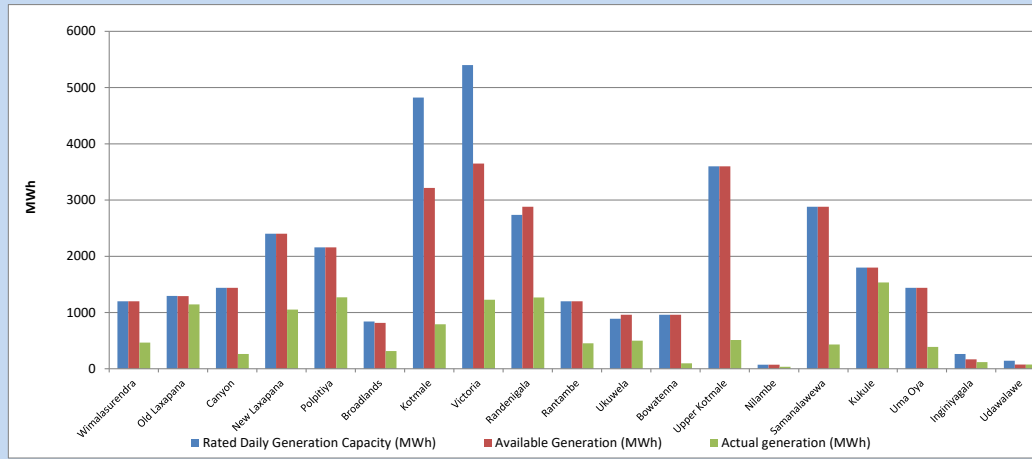


Plant availability is recorded at 6.00 am on

June 17, 2024

## 7. Major Hydro Plant Dispatch

June 16, 2024

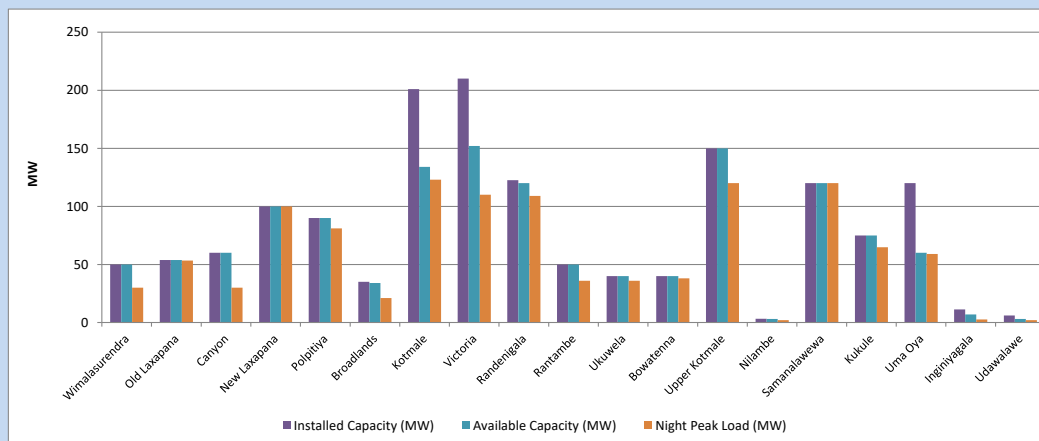


Available Generation is estimated based on plant availability at 6.00am on  
Broadlands power plant is operating in the Commissioning Stage

June 17, 2024

## 8. Major Hydro Plant Loading at Night Peak

June 16, 2024



Plant availability is recorded at 6.00 am on  
Broadlands power plant is operating in the Commissioning Stage

June 17, 2024

## 9. Summary of Major Plant performance

Table 05

Plant	Maximum Available Total Capacity	Plant Availability	Night peak Load	Plant Dispatch
	(MW)	(MW)	(MW)	(MWh)
Wimalasurendra	50	50	30	464
Old Laxapana	54	54	53	1,145
Canyon	60	60	30	263
New Laxapana	100	100	100	1,053
Polpitiya	90	90	81	1,270
Broadlands	35	34	21	314
Kotmale	201	134	123	790
Victoria	210	152	110	1,227
Randenigala	123	120	109	1,267
Rantambe	50	50	36	452
Ukuwela	40	40	36	498
Bowatenna	40	40	38	97
Upper Kotmale	150	150	120	511
Nilambe	3	3	2	34
Samanalawewa	120	120	120	433
Kukule	75	75	65	1,535
Uma Oya (Testing )	120	60	59	389
Inginiyagala	11	7	3	117
Udawalawe	6	3	2	75
Puttalam Coal I	270	270	272	5,988
Puttalam Coal II	270	260	259	5,813
Puttalam Coal III	270	270	271	5,826
KPS Small GTs	54	16	0	0
KPS GT 7	115	115	0	0
KCCP	165	99	0	0
Sapugaskanda A	70	16	0	0
Sapugaskanda B	72	63	0	0
Uthura Janani	22	16	0	0
Barge CEB	62	60	0	76
CEB-Hambantota	30	21	0	0
CEB-Mathugama	20	11	0	0
ACE Matara	24	0	0	0
Asia Power	50	0	0	0
KCCPS -2	163	150	0	0
West Coast	270	130	0	0
Nothern Power	36	0	0	0
ACE Embilipitiya	93	0	0	0
Sobadhanavi	220	0	0	0
<b>Total</b>	<b>3,594</b>	<b>2,839</b>	<b>2,243</b>	<b>37,806</b>

Note-

Plant availability is the availability recorded at 6 am on  
Installed Capacity is sourced from CEB Annual Report- 2022

June 17, 2024

### 10. Contribution to the Night Peak in MW

June 16, 2024

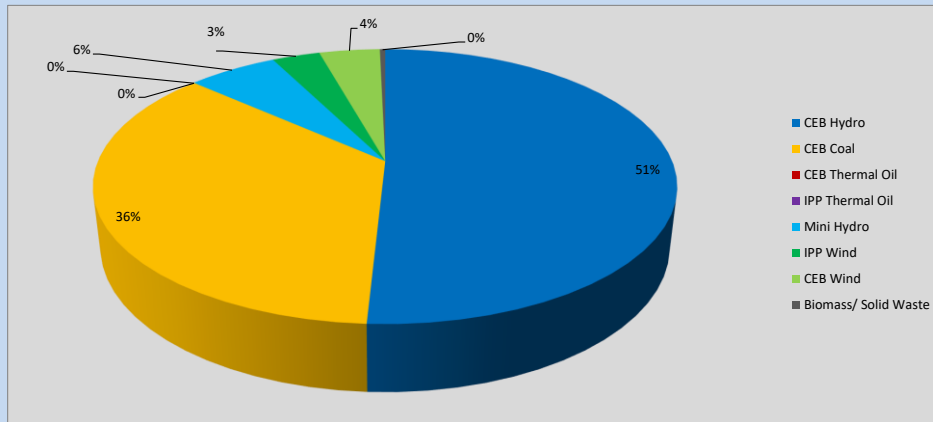


Table 06

CEB Hydro	1142	MW
CEB Coal	802	MW
CEB Thermal Oil	0	MW
IPP Thermal Oil	0	MW
Mini Hydro (Telemetered)	133	MW
IPP Wind	71.1	MW
CEB Wind	90.2	MW
Biomass/ Solid Waste	8	MW

#### Recorded Peak Demand Data

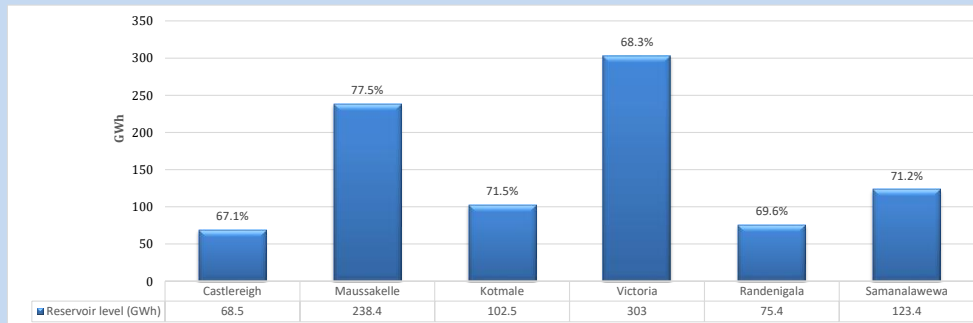
Table 07

Night Peak*	2,247	MW
Day Peak Maximum Demand	1,664	MW
Day Peak Minimum Demand	1,246	MW
Off Peak Minimum Demand	1,440	MW

Above figures are excluding contribution from roof top solar, non telemetered solar and mini hydro plants

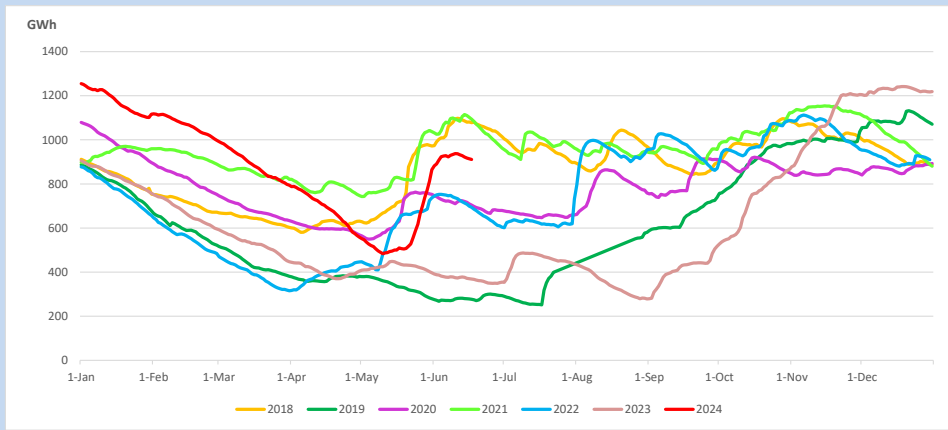
#### Reservoir Levels -

as at 06.00 Hr on June 17, 2024

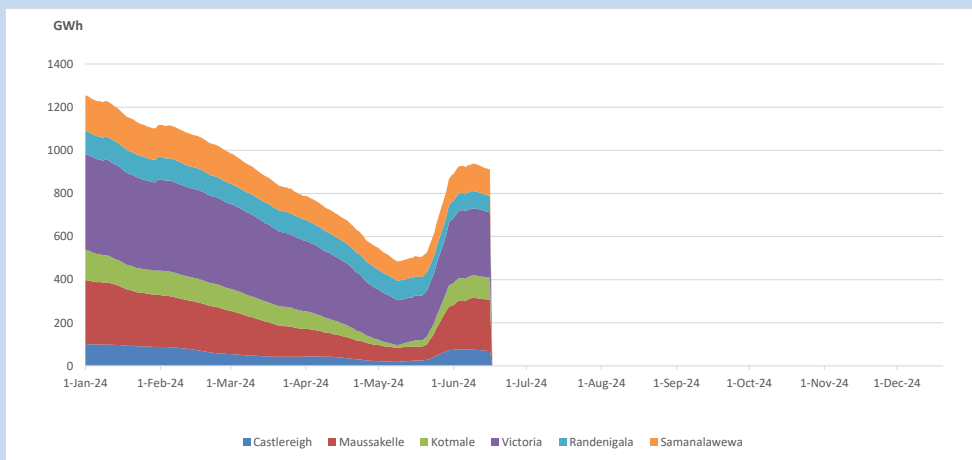


Total Reservoir Level 911.2 GWh  
% of Total capacity 71.3%

### 11. Comparison of Total Reservoir Storage Levels with Past Years

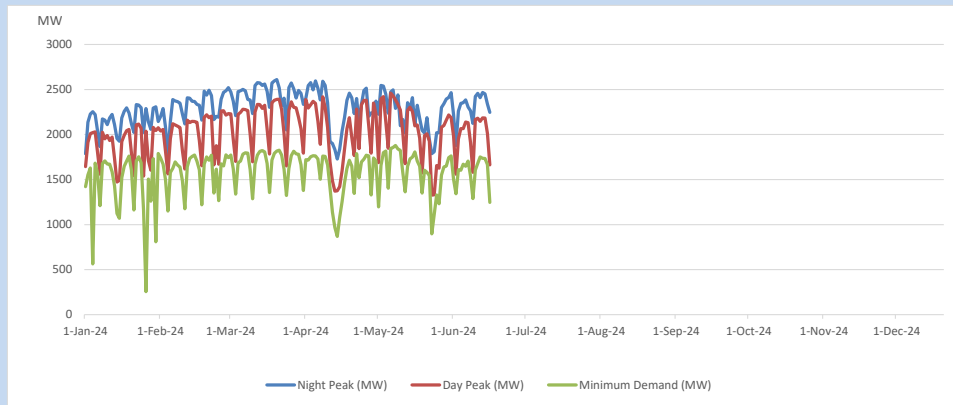


### 12. Variation of Major Hydro Reservoir Levels in the current year (GWh)





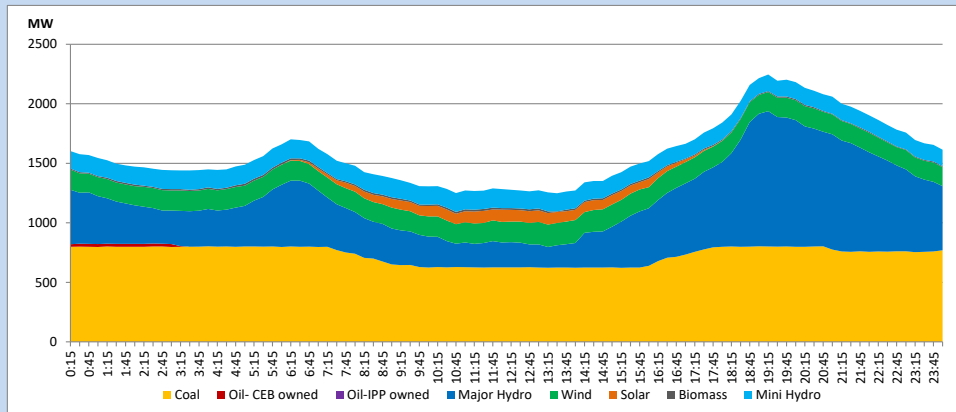
### 13. Variation of Demand during the current year



The above figures are excluding contribution from roof top solar, non telemetered solar and mini hydro plants

### 14. Daily Load Curve

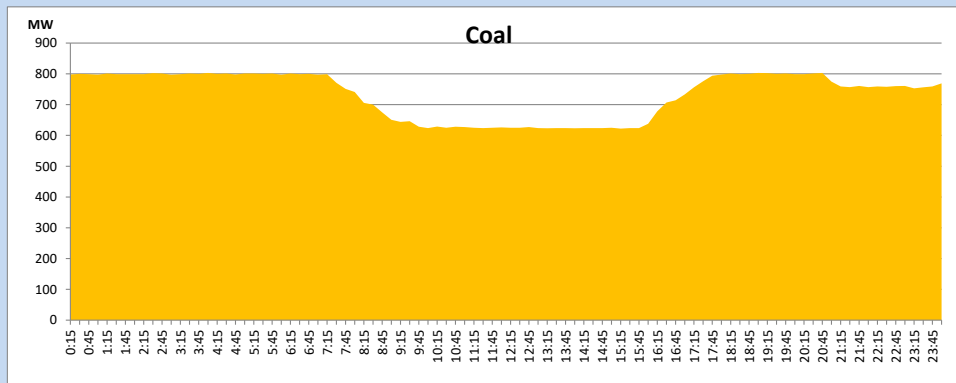
June 16, 2024



Solar and wind data is based on Telemetered Power Stations only

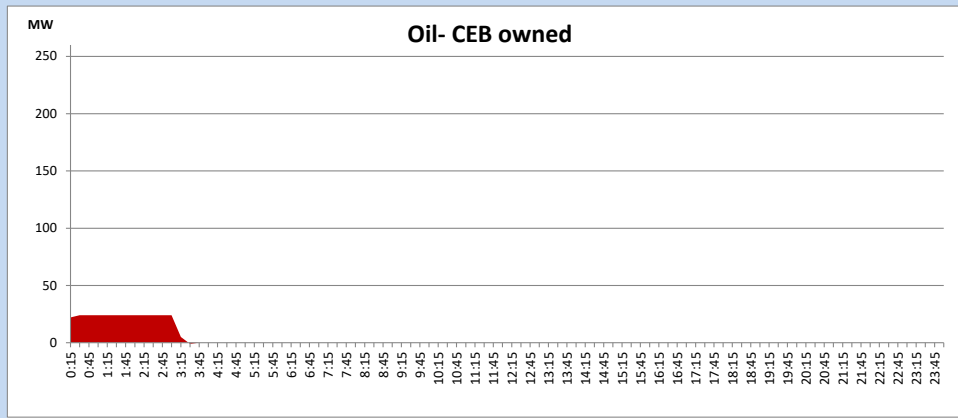
### Coal Generation during

June 16, 2024



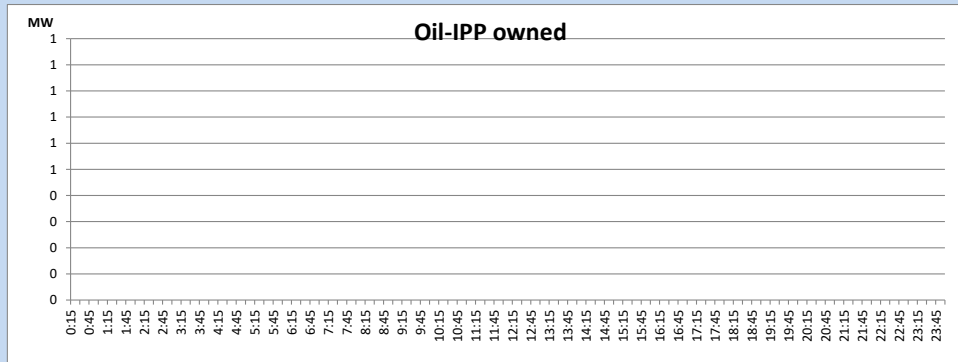
CEB Oil Plant Generation during

June 16, 2024



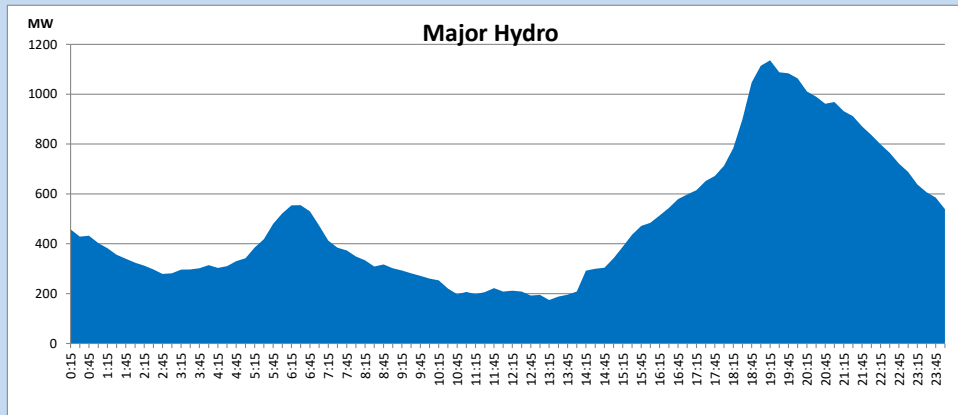
IPP Oil Plant Generation during

June 16, 2024



Major Hydro Generation during

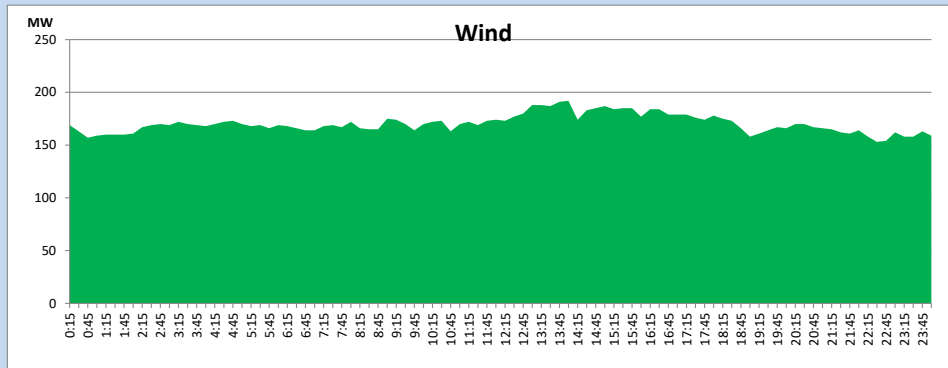
June 16, 2024



### Wind Generation during

June 16, 2024

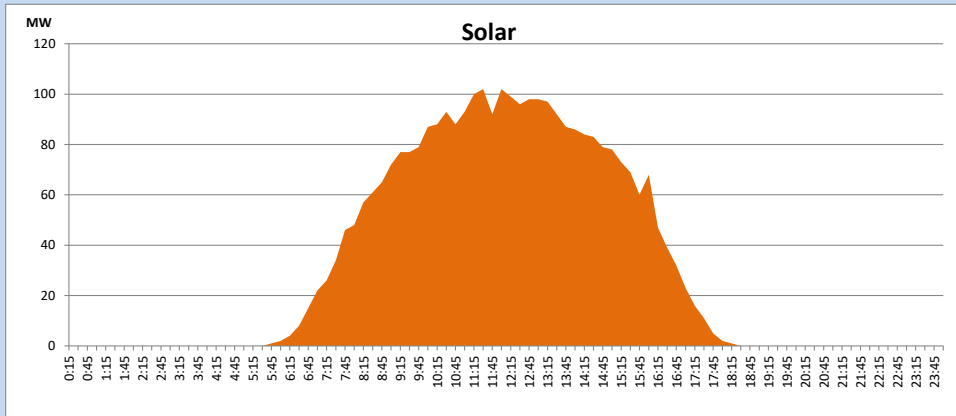
Based on Telemetered Power Stations only



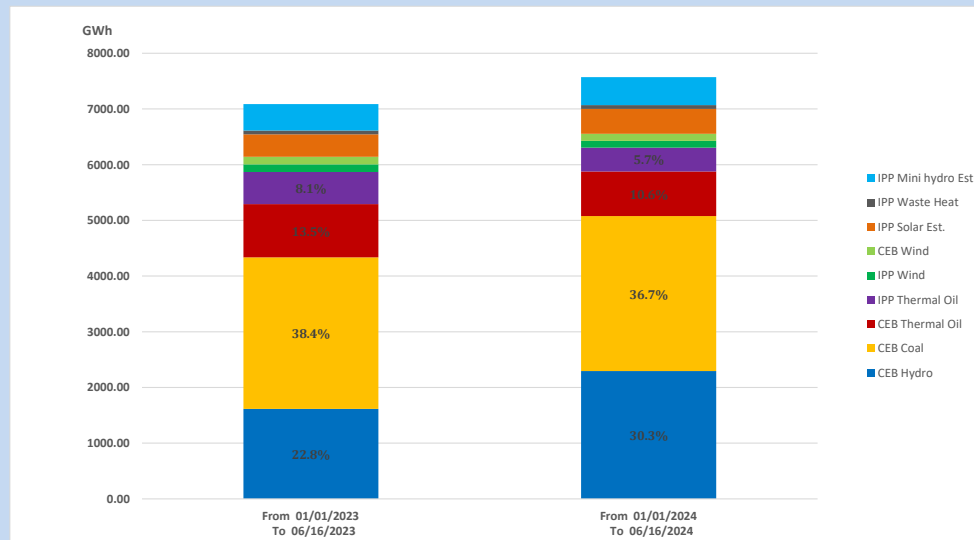
### Solar Generation during

June 16, 2024

Based on Telemetered Power Stations only



### 15. Cumulative Dispatch Comparison with Last Year



**Cumulative dispatch**

From 01/01/2023 To 06/16/2023

7089 GWh

From 01/01/2024 To 06/16/2024

7573 GWh

The above figures are including contribution from roof top solar, non telemetered solar and mini hydro plants)

Unserviced energy due to power cuts has been excluded in 2023

Thermal Plant Fuel types

Table 08

Power Station	Primary Fuel
CEB Thermal	
Sapugaskanda 1	Heavy Fuel
Sapugaskanda 2	Heavy Fuel
Kelanitissa Small Gas Turbines	Auto Diesel
GT 7 - Kelanitissa	Auto Diesel
Kelanitissa CCY	Naphtha or Diesel
Lakvijaya 1	Coal
Lakvijaya 2	Coal
Lakvijaya 3	Coal
Uthuru Janani	Heavy Fuel
Barge CEB	Heavy Fuel
KCCPS -2	Auto Diesel

Power Station	Primary Fuel
Private Thermal	
West Coast	Auto Diesel / Heavy Fuel
Sobadhanavi	Auto Diesel

Major Incidents reported during the day

June 16, 2024

1) Nil.