

Generation and Reservoirs Statistics

June 10, 2024



PUBLIC UTILITIES COMMISSION OF SRI LANKA

1. Daily Generation Mix in MWh

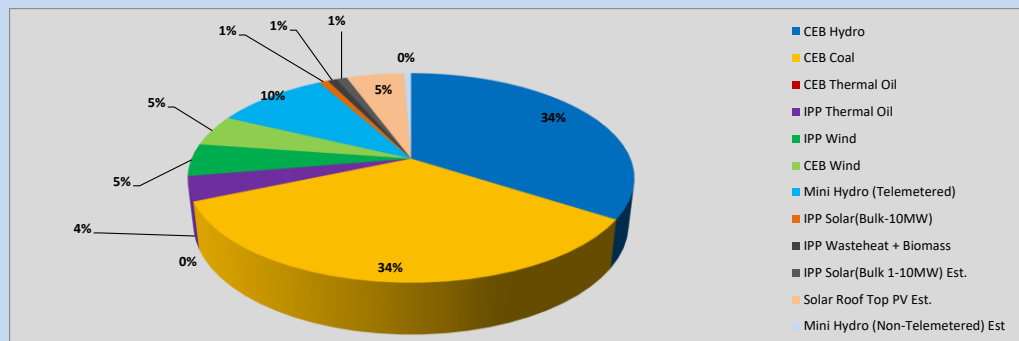


Table 01

	Generation (MWh)
CEB Hydro	15,821
CEB Coal	15,972
CEB Thermal Oil	-
IPP Thermal Oil	1,739
IPP Wind	2,317
CEB Wind	2,227
Mini Hydro (Telemetered)	4,536
IPP Solar (Bulk)	372
IPP Waste heat + Biomass	358
Total Generation (Excluding estimated figures)	43,342
* Estimated unserved energy	0
* Estimated Mini Hydro (Non telemetered)	280
* Estimated IPP Solar PV (Bulk 1-10MW)	428
* Estimated Solar Roof Top PV	2320
Total Generation (Including estimated figures)	46,370

* Estimated figures of CEB generation report

Table 02

	Installed Capacity (MW)
CEB Hydro	1533
CEB Coal	810
CEB Thermal Oil	773.1
IPP Thermal Oil (West Coast)	490
IPP Wind	163
CEB Wind	100
Mini Hydro	422
IPP Waste heat + Biomass	54
IPP Solar	137
Rooftop Solar (Ordinary)	326
Rooftop Solar (LT Bulk)	285
Rooftop Solar (HT Bulk)	79

Data Source - Monthly Review Report [Jan-2024]

2. Cumulative Dispatch

Following data excludes the contribution from roof top solar, non telemetered solar and mini hydro plants

Table 03 - Current Month

Category	Dispatch (GWh)	
CEB Hydro	167	37.98%
CEB Coal	139	31.57%
CEB Thermal Oil	14	3.11%
IPP Thermal	6	1.28%
SPP Wind	16	3.60%
CEB Wind	19	4.36%
Mini Hydro *	48	10.83%
IPP Solar *	29	6.62%
IPP Waste heat + BMP	3	0.65%
Total	440	

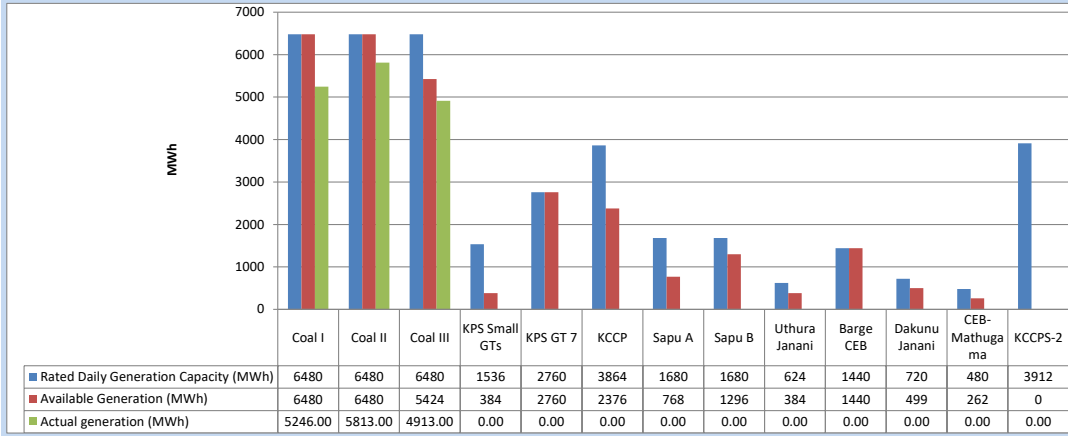
Table 04 - Current Year

Category	Dispatch (GWh)	
CEB Hydro	2,208	30.44%
CEB Coal	2,618	36.11%
CEB Thermal Oil	849	11.70%
IPP Thermal	424	5.84%
SPP Wind	103	1.43%
CEB Wind	113	1.56%
Mini Hydro *	463	6.39%
IPP Solar *	410	5.65%
IPP Waste heat	63	0.87%
Total	7,251	

*Including estimated contribution from non telemetered plants

3. CEB owned Thermal Plant Dispatch

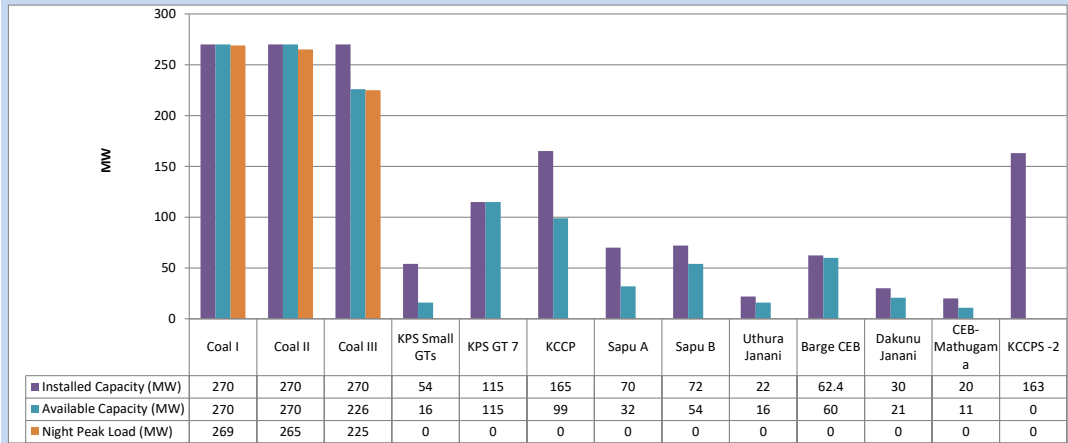
June 10, 2024



Available Generation is estimated based on plant availability at 6.00am on

June 11, 2024

4. CEB owned Thermal Plant Loading at the Night Peak

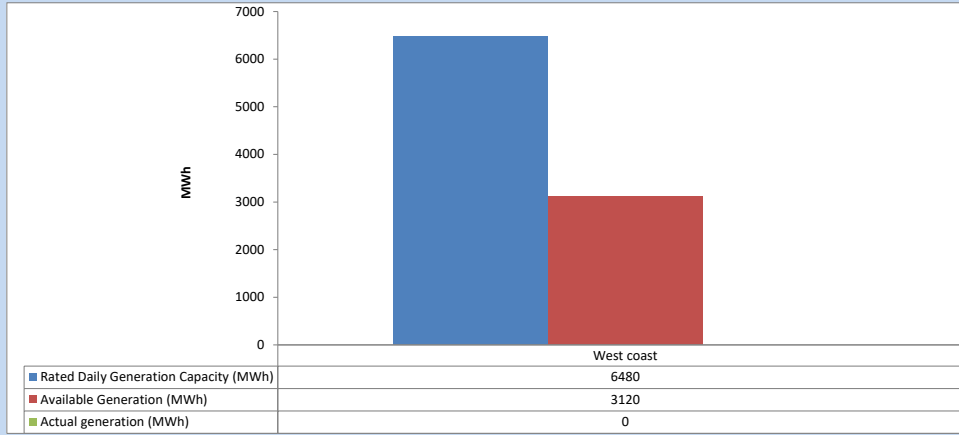


Plant availability is recorded at 6.00 am on

June 11, 2024

5. IPP owned Thermal Plant Dispatch

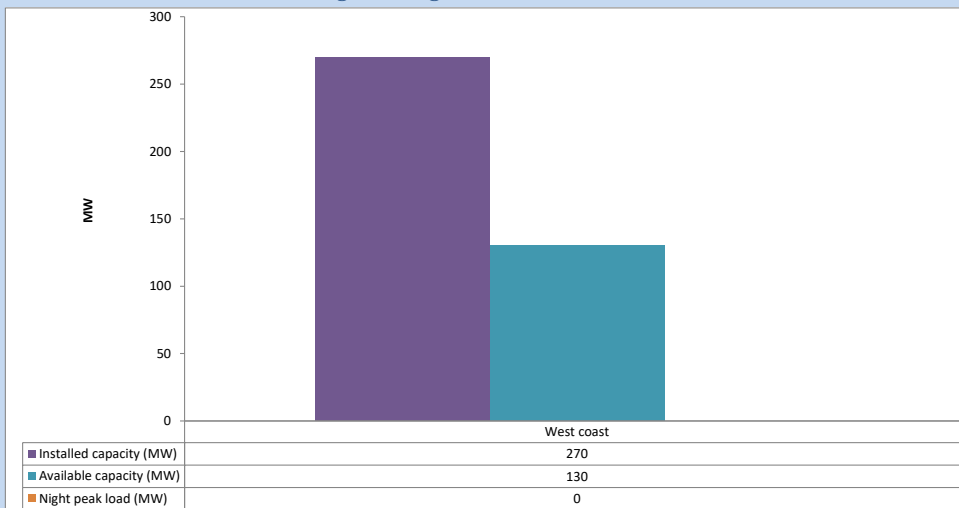
June 10, 2024



Available Generation is estimated based on plant availability at 6.00am on

June 11, 2024

6. IPP owned Thermal Plant Loading at the Night Peak

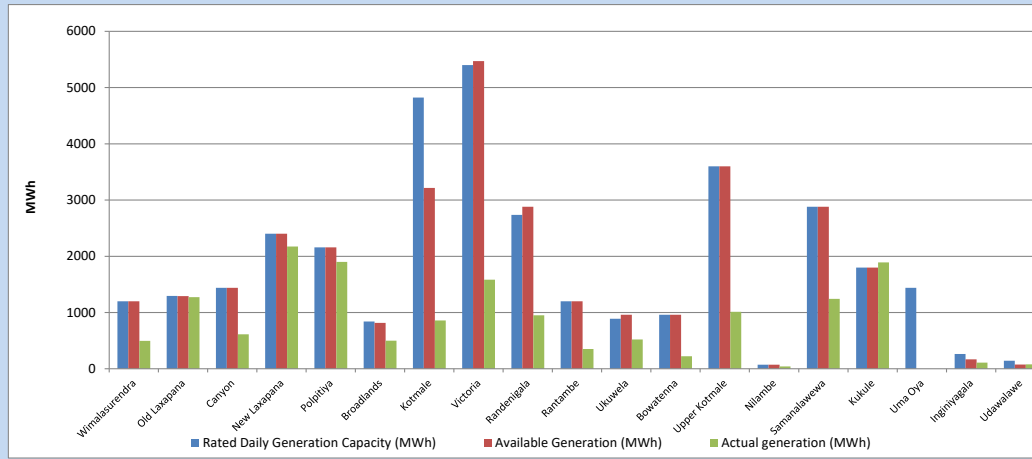


Plant availability is recorded at 6.00 am on

June 11, 2024

7. Major Hydro Plant Dispatch

June 10, 2024

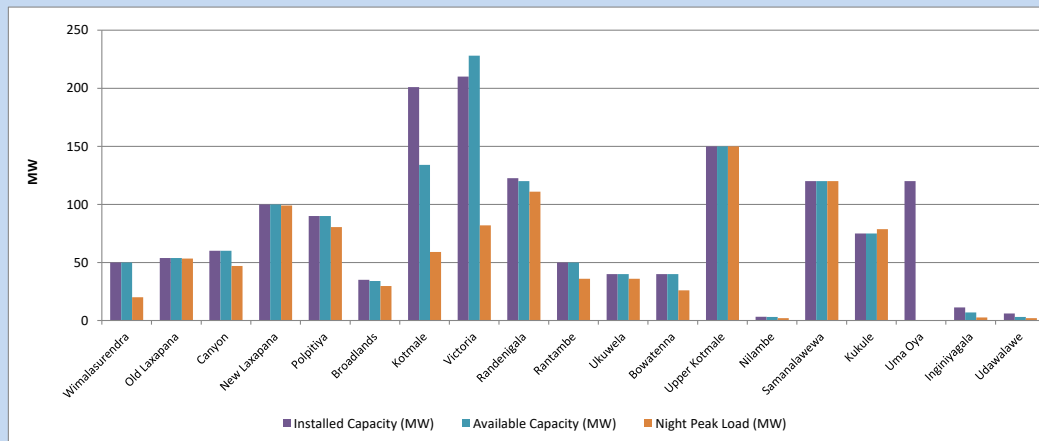


Available Generation is estimated based on plant availability at 6.00am on
Broadlands power plant is operating in the Commissioning Stage

June 11, 2024

8. Major Hydro Plant Loading at Night Peak

June 10, 2024



Plant availability is recorded at 6.00 am on
Broadlands power plant is operating in the Commissioning Stage

June 11, 2024

9. Summary of Major Plant performance

Table 05

Plant	Maximum Available Total Capacity	Plant Availability	Night peak Load	Plant Dispatch
	(MW)	(MW)	(MW)	(MWh)
Wimalasurendra	50	50	20	495
Old Laxapana	54	54	53	1,274
Canyon	60	60	47	613
New Laxapana	100	100	99	2,175
Polpitiya	90	90	81	1,900
Broadlands	35	34	30	498
Kotmale	201	134	59	860
Victoria	210	228	82	1,584
Randenigala	123	120	111	952
Rantambe	50	50	36	352
Ukuwela	40	40	36	521
Bowatenna	40	40	26	222
Upper Kotmale	150	150	150	1,012
Nilambe	3	3	2	41
Samanalawewa	120	120	120	1,244
Kukule	75	75	79	1,892
Uma Oya (Testing)	120	0	0	0
Inginiyagala	11	7	3	109
Udawalawe	6	3	2	78
Puttalam Coal I	270	270	269	5,246
Puttalam Coal II	270	270	265	5,813
Puttalam Coal III	270	226	225	4,913
KPS Small GTs	54	16	0	0
KPS GT 7	115	115	0	0
KCCP	165	99	0	0
Sapugaskanda A	70	32	0	0
Sapugaskanda B	72	54	0	0
Uthura Janani	22	16	0	0
Barge CEB	62	60	0	0
CEB-Hambantota	30	21	0	0
CEB-Mathugama	20	11	0	0
ACE Matara	24	0	0	0
Asia Power	50	0	0	0
KCCPS -2	163	0	0	0
West Coast	270	130	0	0
Nothern Power	36	0	0	0
ACE Embilipitiya	93	0	0	0
Sobadhanavi	220	0	226	1,739
Total	3,594	2,678	2,193	43,343

Note-

Plant availability is the availability recorded at 6 am on
Installed Capacity is sourced from CEB Annual Report- 2022

June 11, 2024

10. Contribution to the Night Peak in MW

June 10, 2024

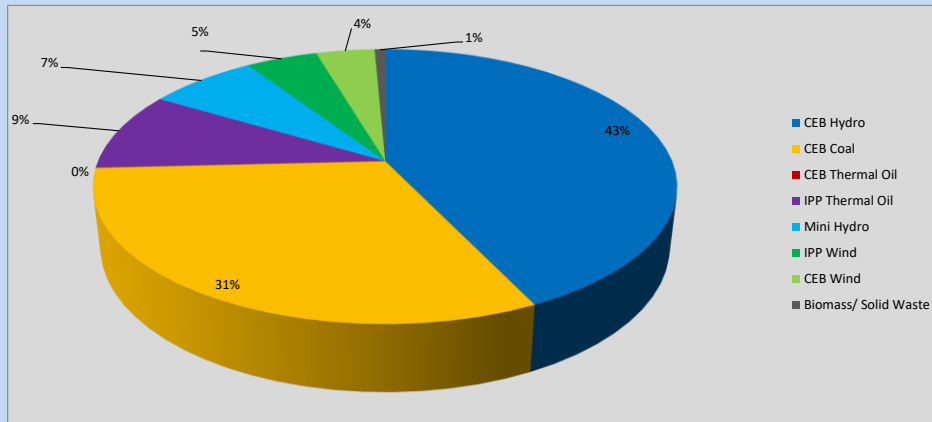


Table 06

CEB Hydro	1038	MW
CEB Coal	759	MW
CEB Thermal Oil	0	MW
IPP Thermal Oil	226	MW
Mini Hydro (Telemetered)	173	MW
IPP Wind	114.5	MW
CEB Wind	94	MW
Biomass/ Solid Waste	17	MW

Recorded Peak Demand Data

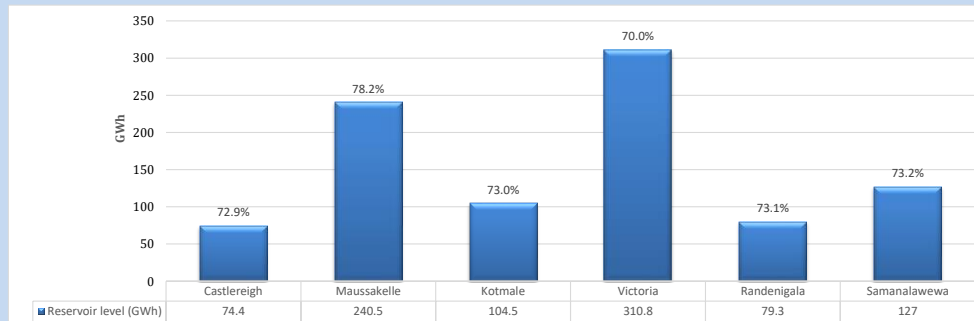
Table 07

Night Peak*	2,422	MW
Day Peak Maximum Demand	2,168	MW
Day Peak Minimum Demand	1,606	MW
Off Peak Minimum Demand	1,286	MW

Above figures are excluding contribution from roof top solar, non telemetered solar and mini hydro plants

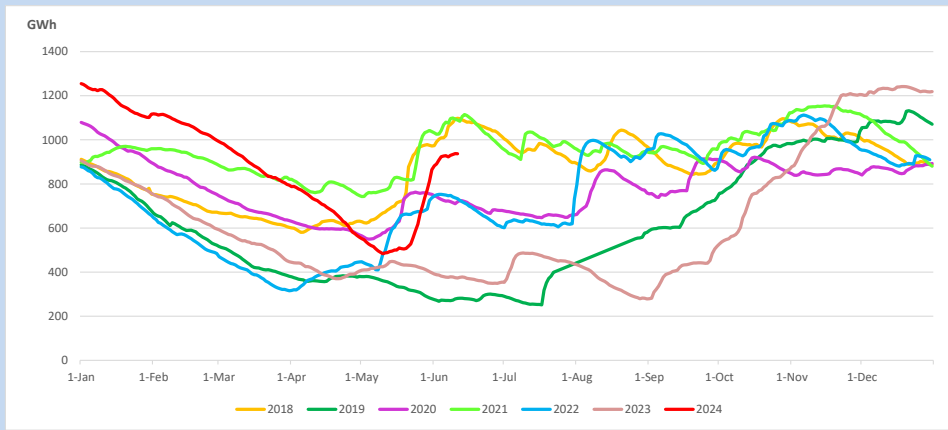
Reservoir Levels -

as at 06.00 Hr on June 11, 2024

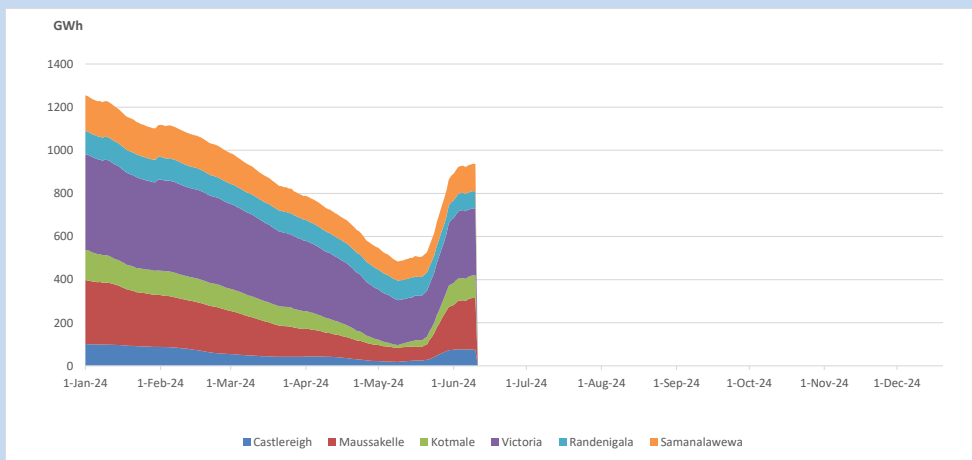


Total Reservoir Level 936.5 GWh
% of Total capacity 73.2%

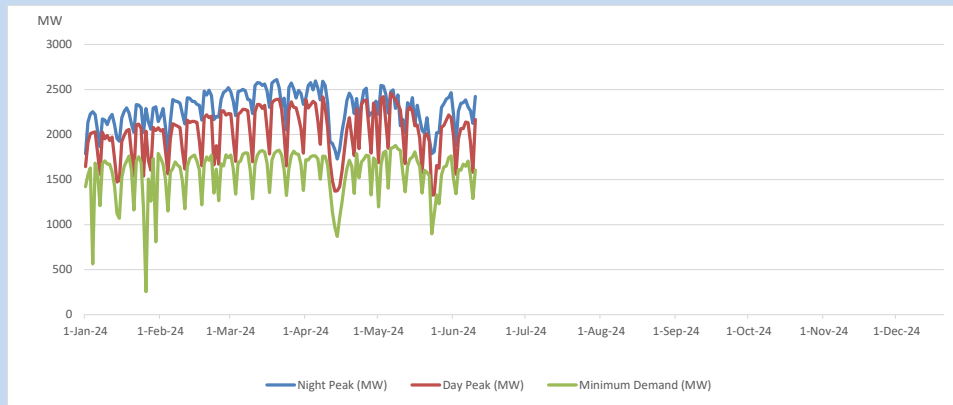
11. Comparison of Total Reservoir Storage Levels with Past Years



12. Variation of Major Hydro Reservoir Levels in the current year (GWh)



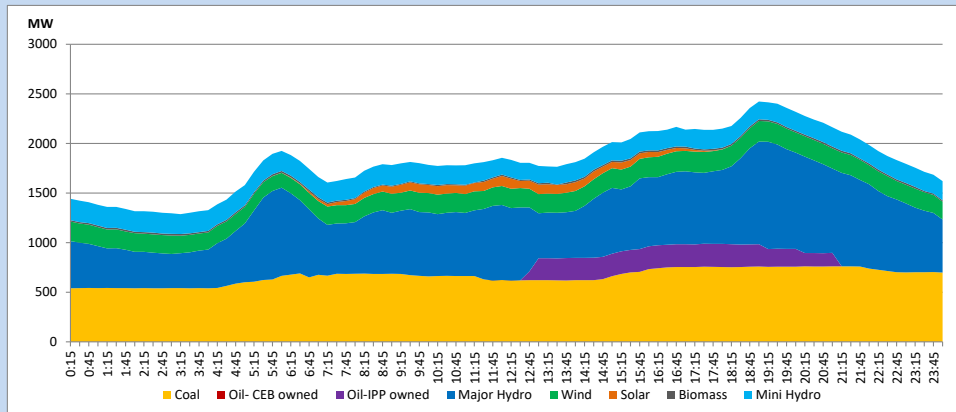
13. Variation of Demand during the current year



The above figures are excluding contribution from roof top solar, non telemetered solar and mini hydro plants

14. Daily Load Curve

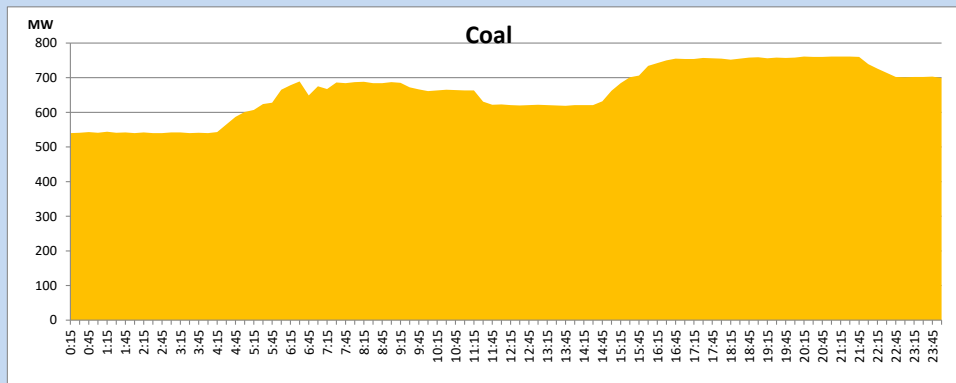
June 10, 2024



Solar and wind data is based on Telemetered Power Stations only

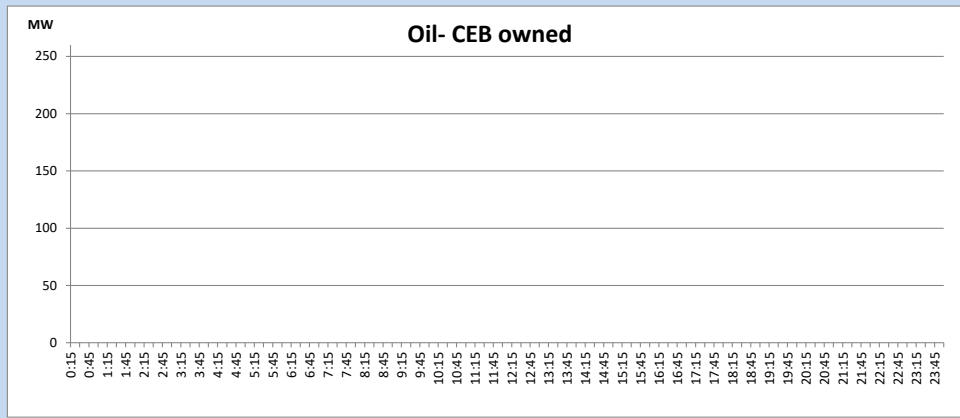
Coal Generation during

June 10, 2024



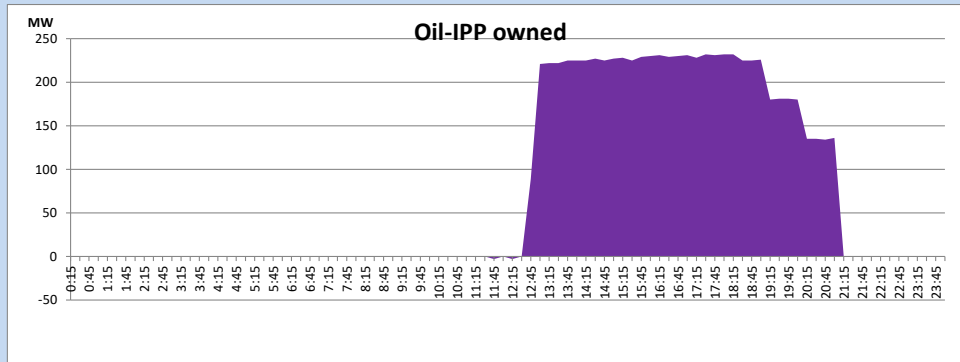
CEB Oil Plant Generation during

June 10, 2024



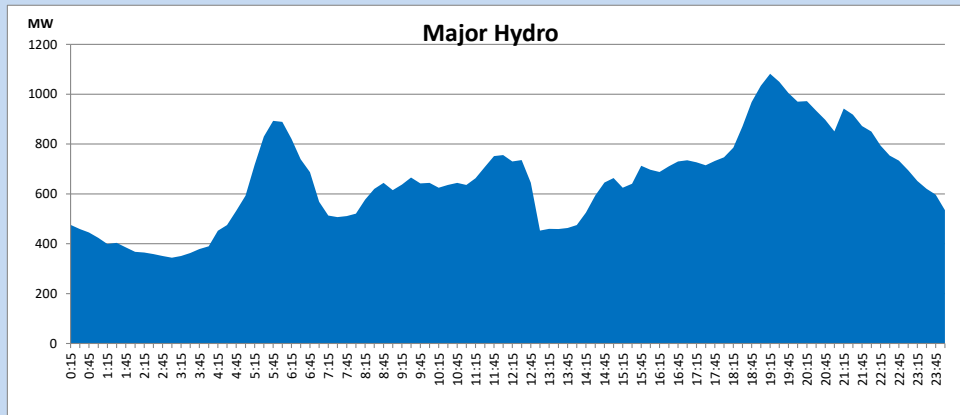
IPP Oil Plant Generation during

June 10, 2024



Major Hydro Generation during

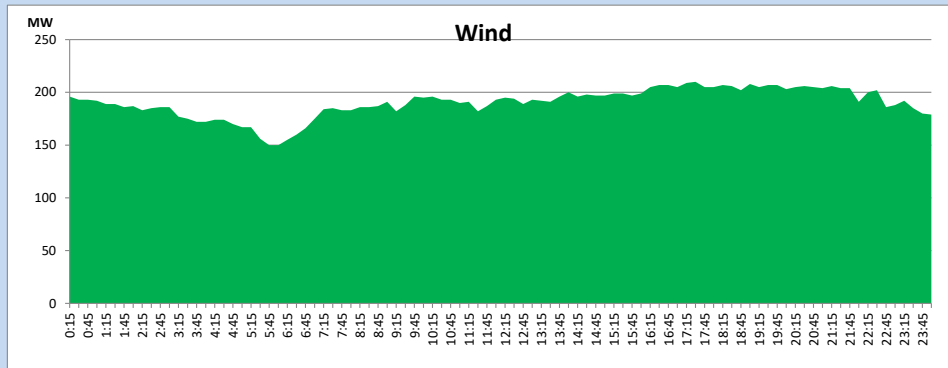
June 10, 2024



Wind Generation during

June 10, 2024

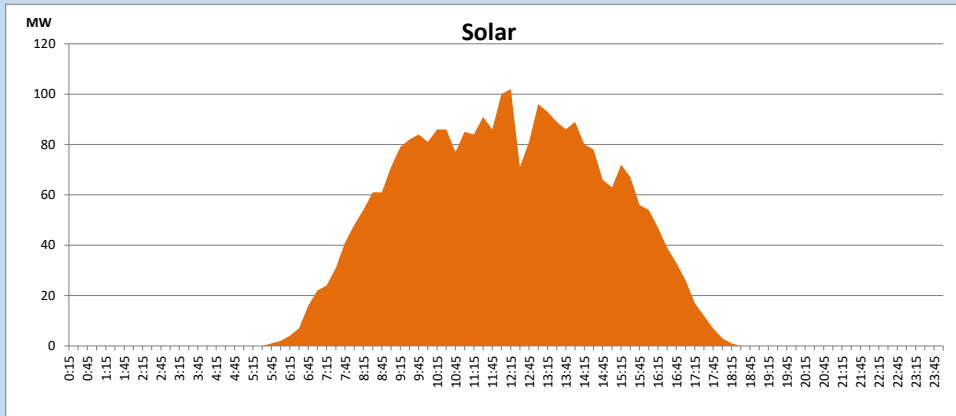
Based on Telemetered Power Stations only



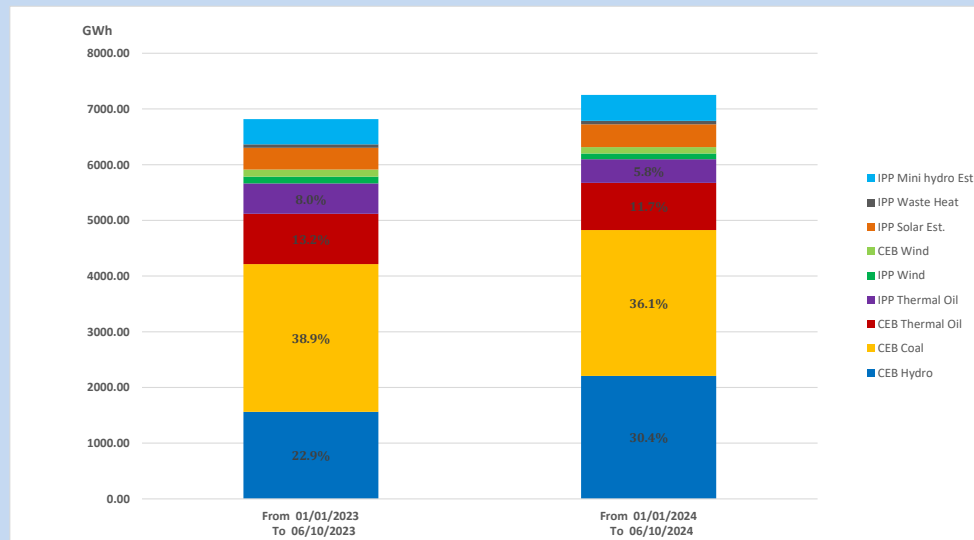
Solar Generation during

June 10, 2024

Based on Telemetered Power Stations only



15. Cumulative Dispatch Comparison with Last Year



Cumulative dispatch

From 01/01/2023 To 06/10/2023

6819 GWh

From 01/01/2024 To 06/10/2024

7251 GWh

The above figures are including contribution from roof top solar, non telemetered solar and mini hydro plants)

Unserviced energy due to power cuts has been excluded in 2023

Thermal Plant Fuel types

Table 08

Power Station	Primary Fuel
CEB Thermal	
Sapugaskanda 1	Heavy Fuel
Sapugaskanda 2	Heavy Fuel
Kelanitissa Small Gas Turbines	Auto Diesel
GT 7 - Kelanitissa	Auto Diesel
Kelanitissa CCY	Naphtha or Diesel
Lakvijaya 1	Coal
Lakvijaya 2	Coal
Lakvijaya 3	Coal
Uthuru Janani	Heavy Fuel
Barge CEB	Heavy Fuel
KCCPS -2	Auto Diesel

Power Station	Primary Fuel
Private Thermal	
West Coast	Auto Diesel / Heavy Fuel
Sobadhanavi	Auto Diesel

Major Incidents reported during the day

June 10, 2024

- 1) Kukule Ganga pond spilling stopped at 03:22hrs (11.06.2024).