

Generation and Reservoirs Statistics

June 9, 2024



PUBLIC UTILITIES COMMISSION OF SRI LANKA

1. Daily Generation Mix in MWh

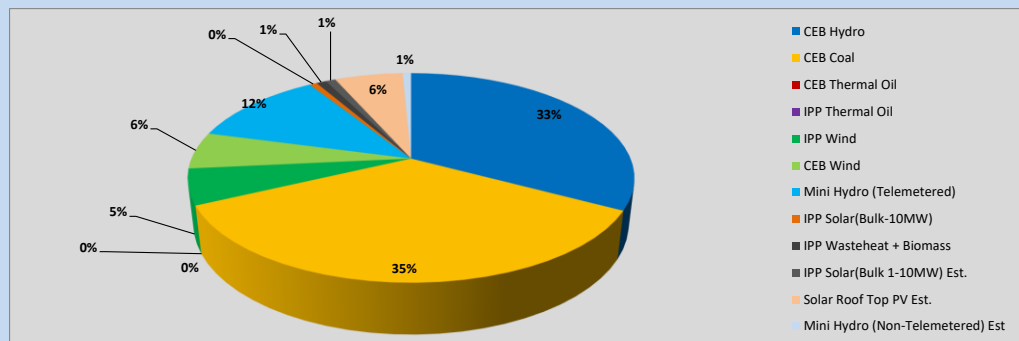


Table 01

	Generation (MWh)
CEB Hydro	12,899
CEB Coal	13,839
CEB Thermal Oil	-
IPP Thermal Oil	-
IPP Wind	2,163
CEB Wind	2,243
Mini Hydro (Telemetered)	4,661
IPP Solar (Bulk)	252
IPP Waste heat + Biomass	334
Total Generation (Excluding estimated figures)	36,391
* Estimated unserved energy	0
* Estimated Mini Hydro (Non telemetered)	288
* Estimated IPP Solar PV (Bulk 1-10MW)	339
* Estimated Solar Roof Top PV	2320
Total Generation (Including estimated figures)	39,338

* Estimated figures of CEB generation report

Table 02

	Installed Capacity (MW)
CEB Hydro	1533
CEB Coal	810
CEB Thermal Oil	773.1
IPP Thermal Oil (West Coast)	490
IPP Wind	163
CEB Wind	100
Mini Hydro	422
IPP Waste heat + Biomass	54
IPP Solar	137
Rooftop Solar (Ordinary)	326
Rooftop Solar (LT Bulk)	285
Rooftop Solar (HT Bulk)	79

Data Source - Monthly Review Report [Jan-2024]

2. Cumulative Dispatch

Following data excludes the contribution from roof top solar, non telemetered solar and mini hydro plants

Table 03 - Current Month

Category	Dispatch (GWh)	
CEB Hydro	151	38.44%
CEB Coal	123	31.23%
CEB Thermal Oil	14	3.48%
IPP Thermal	4	0.99%
SPP Wind	14	3.43%
CEB Wind	17	4.30%
Mini Hydro *	43	10.88%
IPP Solar *	26	6.61%
IPP Waste heat + BMP	3	0.64%
Total	394	

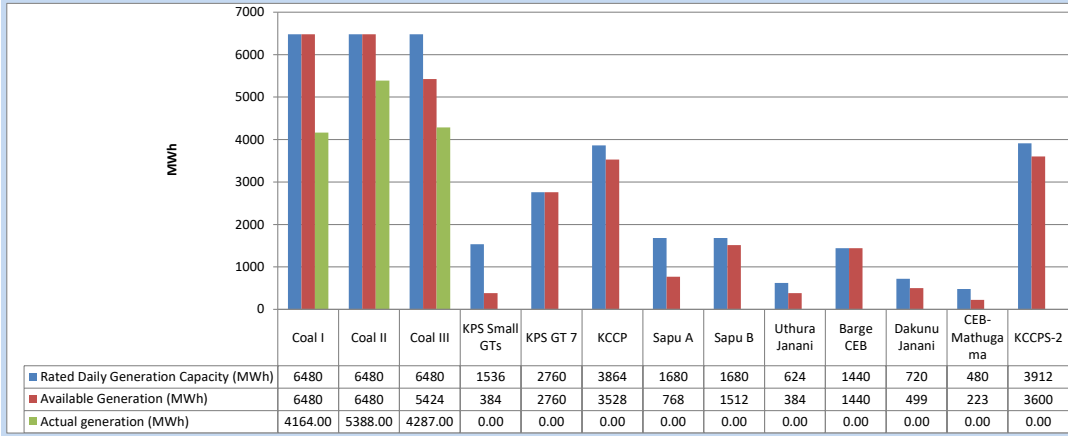
Table 04 - Current Year

Category	Dispatch (GWh)	
CEB Hydro	2,192	30.42%
CEB Coal	2,602	36.12%
CEB Thermal Oil	849	11.78%
IPP Thermal	422	5.86%
SPP Wind	101	1.40%
CEB Wind	111	1.54%
Mini Hydro *	458	6.36%
IPP Solar *	407	5.65%
IPP Waste heat	63	0.87%
Total	7,205	

*Including estimated contribution from non telemetered plants

3. CEB owned Thermal Plant Dispatch

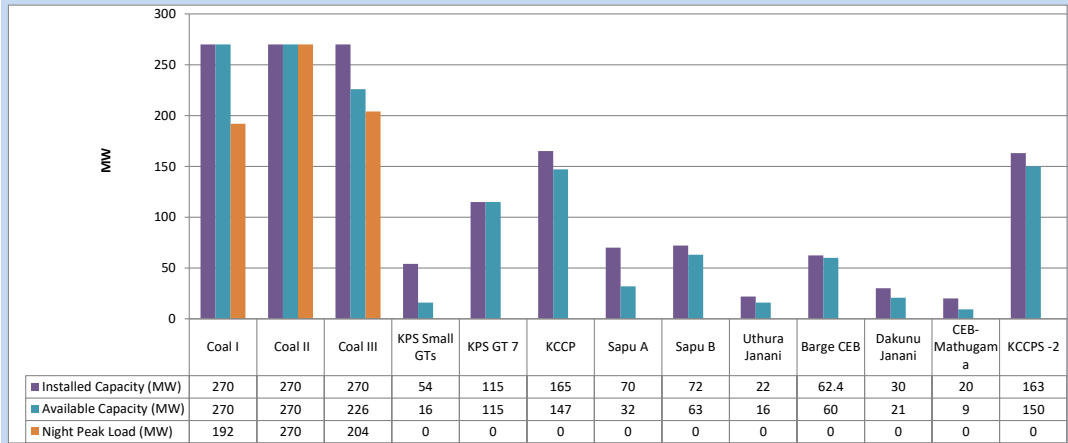
June 9, 2024



Available Generation is estimated based on plant availability at 6.00am on

June 10, 2024

4. CEB owned Thermal Plant Loading at the Night Peak

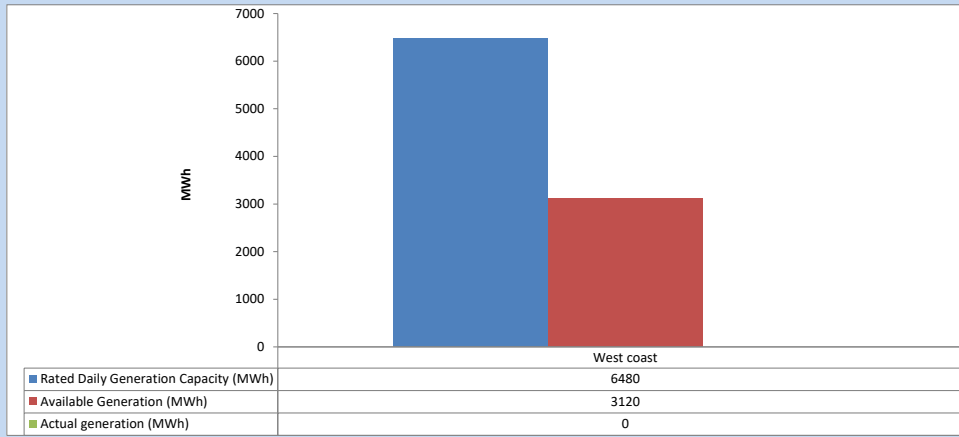


Plant availability is recorded at 6.00 am on

June 10, 2024

5. IPP owned Thermal Plant Dispatch

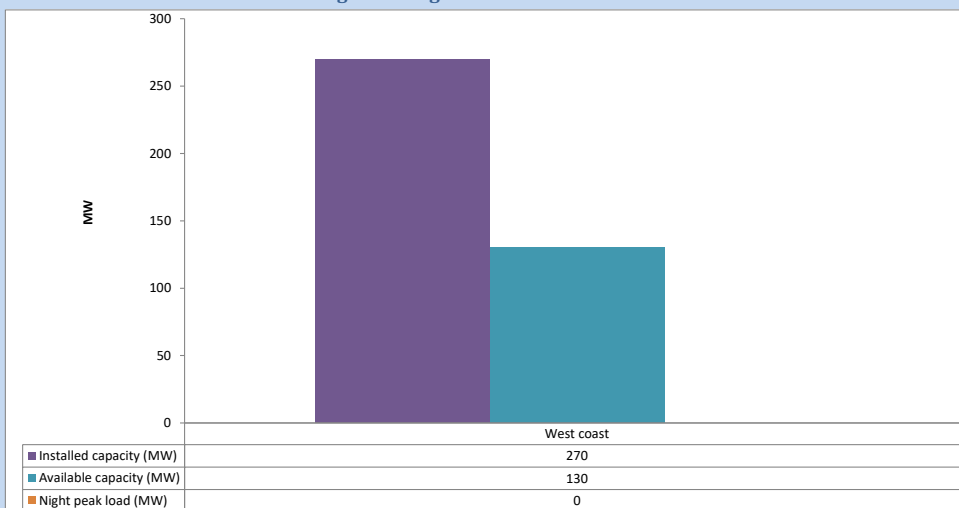
June 9, 2024



Available Generation is estimated based on plant availability at 6.00am on

June 10, 2024

6. IPP owned Thermal Plant Loading at the Night Peak

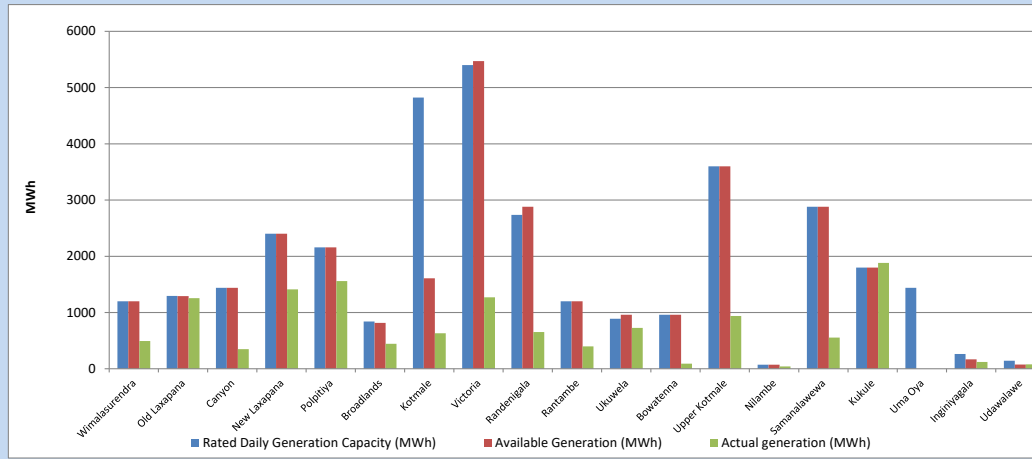


Plant availability is recorded at 6.00 am on

June 10, 2024

7. Major Hydro Plant Dispatch

June 9, 2024

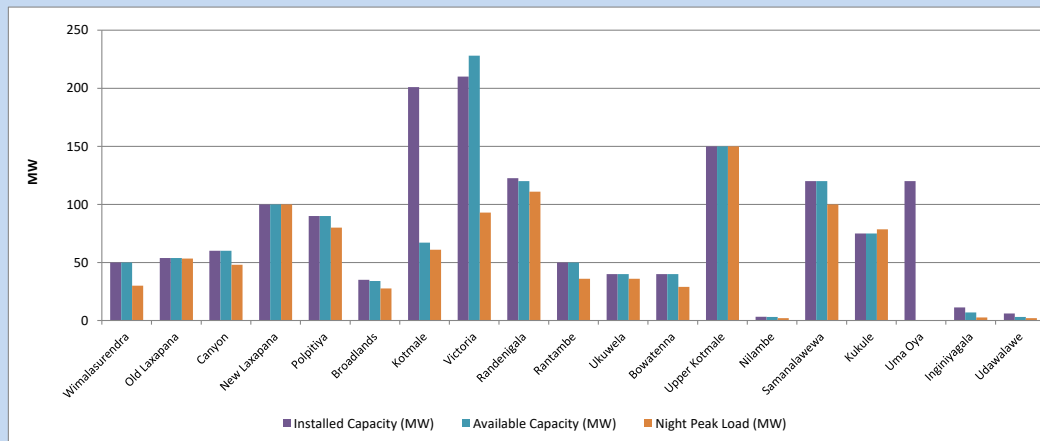


Available Generation is estimated based on plant availability at 6.00am on
Broadlands power plant is operating in the Commissioning Stage

June 10, 2024

8. Major Hydro Plant Loading at Night Peak

June 9, 2024



Plant availability is recorded at 6.00 am on
Broadlands power plant is operating in the Commissioning Stage

June 10, 2024

9. Summary of Major Plant performance

Table 05

Plant	Maximum Available Total Capacity	Plant Availability	Night peak Load	Plant Dispatch
	(MW)	(MW)	(MW)	(MWh)
Wimalasurendra	50	50	30	493
Old Laxapana	54	54	53	1,254
Canyon	60	60	48	350
New Laxapana	100	100	100	1,412
Polpitiya	90	90	80	1,560
Broadlands	35	34	28	444
Kotmale	201	67	61	630
Victoria	210	228	93	1,271
Randenigala	123	120	111	652
Rantambe	50	50	36	398
Ukuwela	40	40	36	727
Bowatenna	40	40	29	90
Upper Kotmale	150	150	150	940
Nilambe	3	3	2	41
Samanalawewa	120	120	100	555
Kukule	75	75	79	1,881
Uma Oya (Testing)	120	0	0	0
Inginiyagala	11	7	3	122
Udawalawe	6	3	2	78
Puttalam Coal I	270	270	192	4,164
Puttalam Coal II	270	270	270	5,388
Puttalam Coal III	270	226	204	4,287
KPS Small GTs	54	16	0	0
KPS GT 7	115	115	0	0
KCCP	165	147	0	0
Sapugaskanda A	70	32	0	0
Sapugaskanda B	72	63	0	0
Uthura Janani	22	16	0	0
Barge CEB	62	60	0	0
CEB-Hambantota	30	21	0	0
CEB-Mathugama	20	9	0	0
ACE Matara	24	0	0	0
Asia Power	50	0	0	0
KCCPS -2	163	150	0	0
West Coast	270	130	0	0
Nothern Power	36	0	0	0
ACE Embilipitiya	93	0	0	0
Sobadhanavi	220	0	0	0
Total	3,594	2,816	2,120	36,390

Note-

Plant availability is the availability recorded at 6 am on
Installed Capacity is sourced from CEB Annual Report- 2022

June 10, 2024

10. Contribution to the Night Peak in MW

June 9, 2024

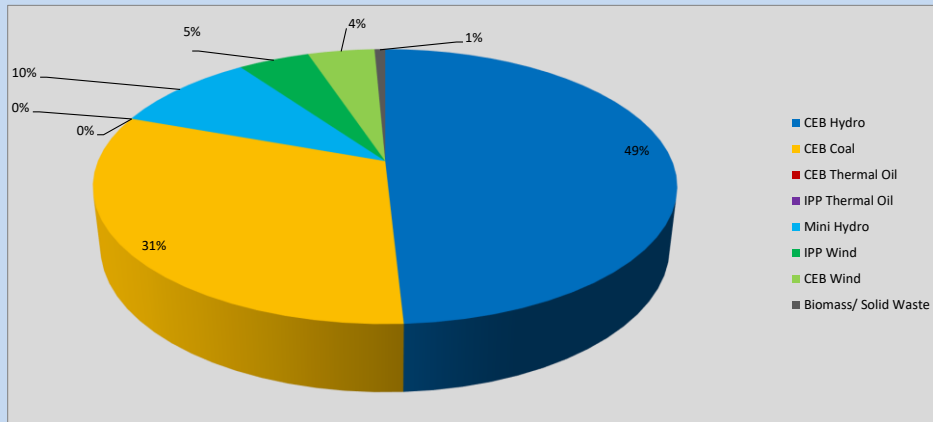


Table 06

CEB Hydro	1044	MW
CEB Coal	666	MW
CEB Thermal Oil	0	MW
IPP Thermal Oil	0	MW
Mini Hydro (Telemetered)	204	MW
IPP Wind	100.4	MW
CEB Wind	93.9	MW
Biomass/ Solid Waste	15	MW

Recorded Peak Demand Data

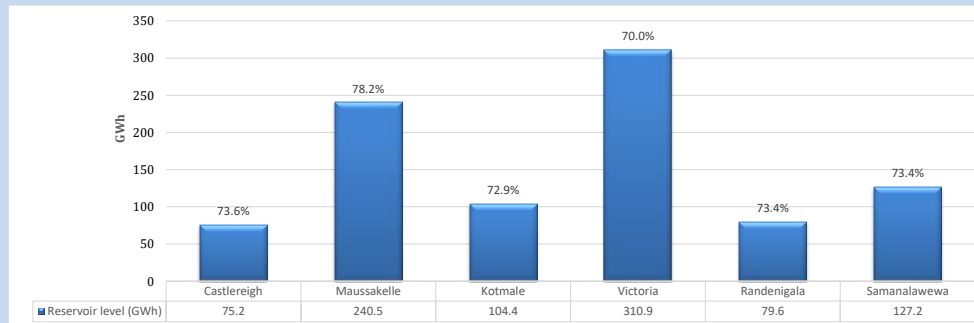
Table 07

Night Peak*	2,124	MW
Day Peak Maximum Demand	1,581	MW
Day Peak Minimum Demand	1,289	MW
Off Peak Minimum Demand	1,356	MW

Above figures are excluding contribution from roof top solar, non telemetered solar and mini hydro plants

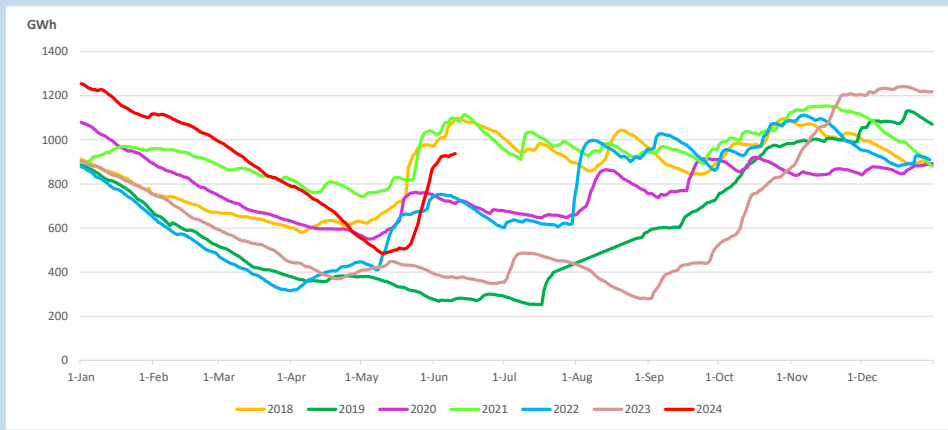
Reservoir Levels -

as at 06.00 Hr on June 10, 2024

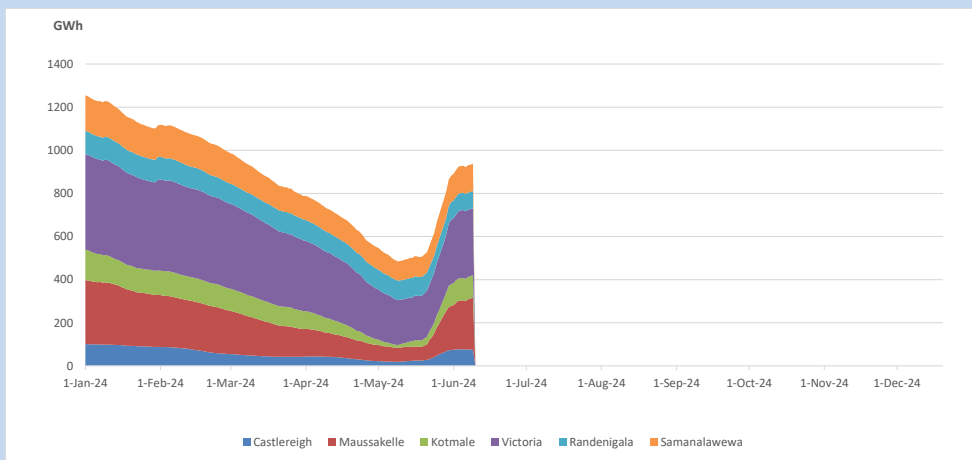


Total Reservoir Level 937.8 GWh
% of Total capacity 73.3%

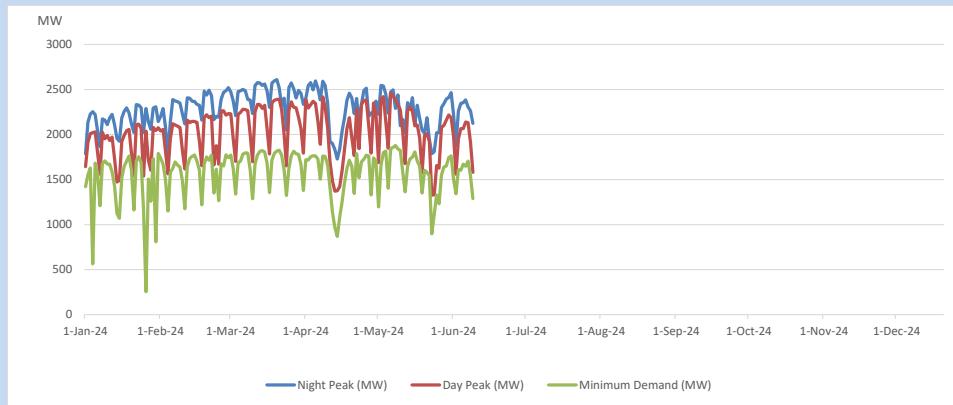
11. Comparison of Total Reservoir Storage Levels with Past Years



12. Variation of Major Hydro Reservoir Levels in the current year (GWh)



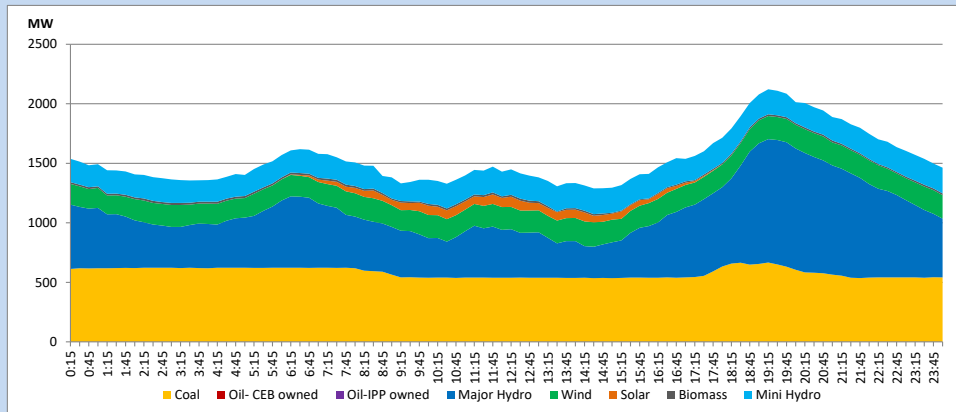
13. Variation of Demand during the current year



The above figures are excluding contribution from roof top solar, non telemetered solar and mini hydro plants

14. Daily Load Curve

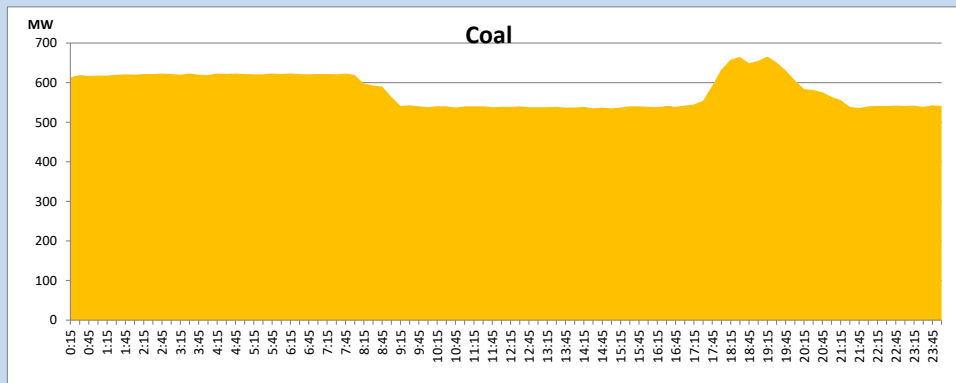
June 9, 2024



Solar and wind data is based on Telemetered Power Stations only

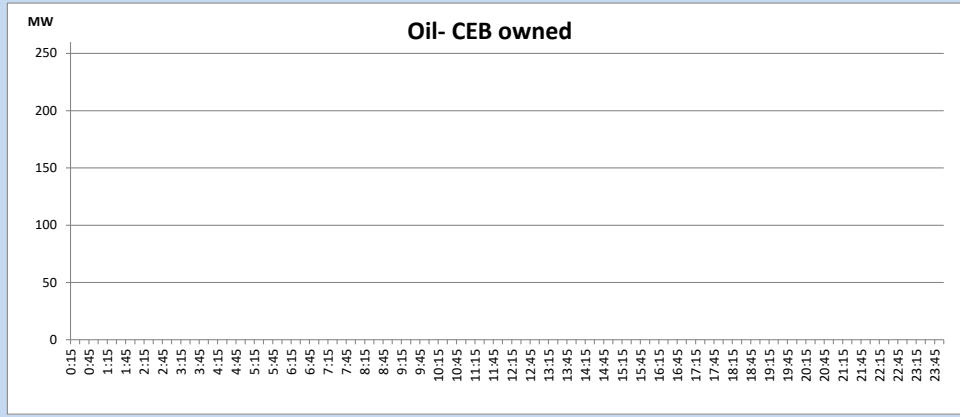
Coal Generation during

June 9, 2024



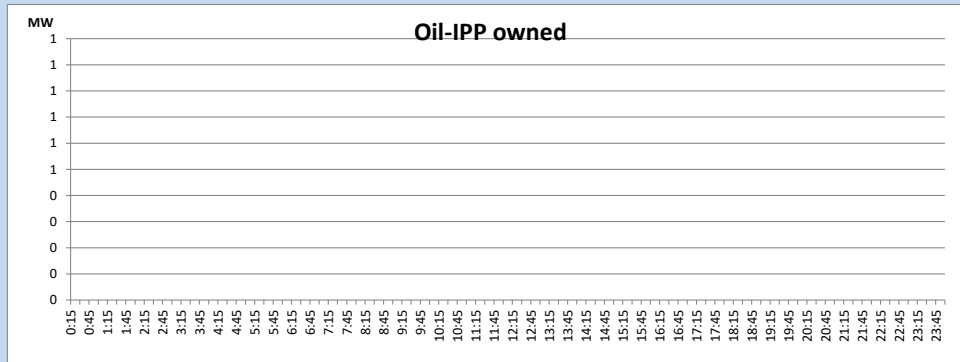
CEB Oil Plant Generation during

June 9, 2024



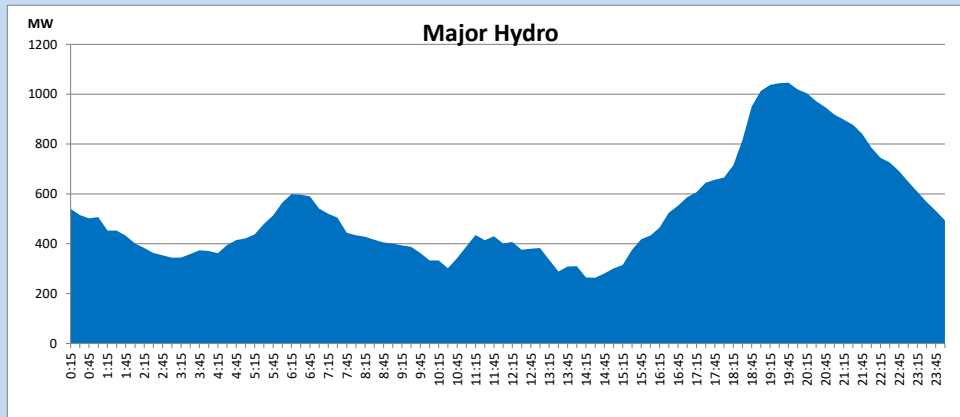
IPP Oil Plant Generation during

June 9, 2024



Major Hydro Generation during

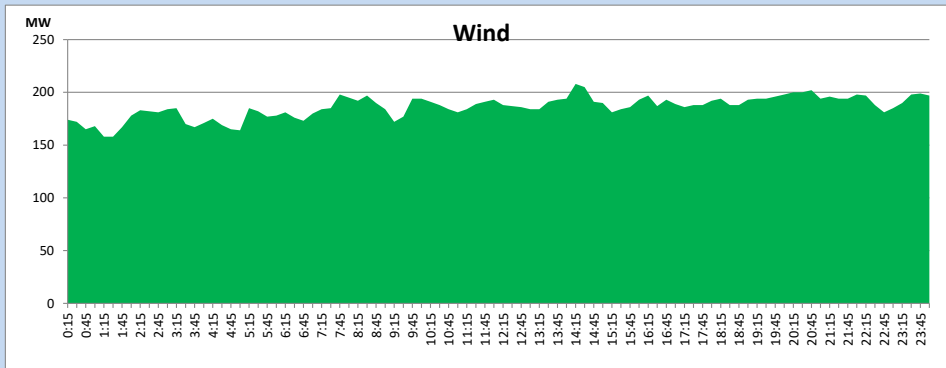
June 9, 2024



Wind Generation during

June 9, 2024

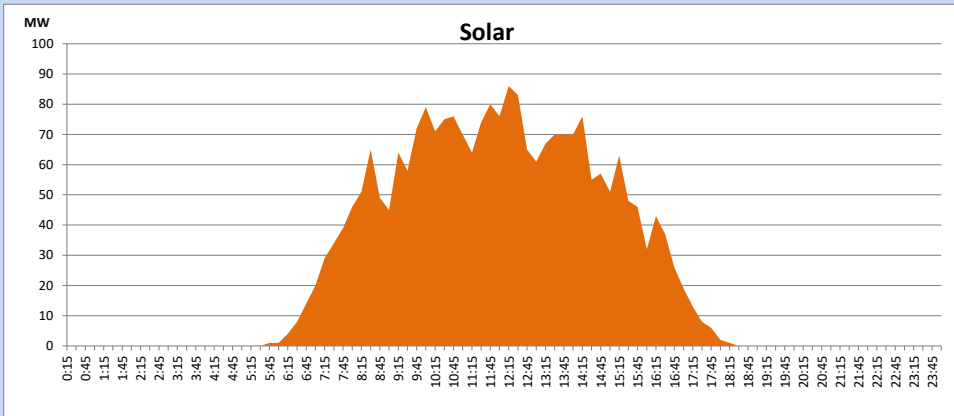
Based on Telemetered Power Stations only



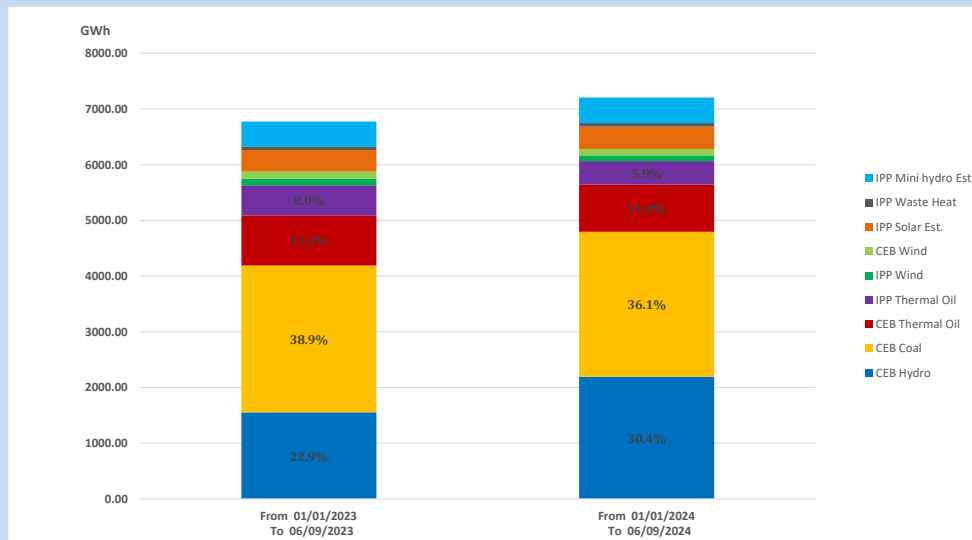
Solar Generation during

June 9, 2024

Based on Telemetered Power Stations only



15. Cumulative Dispatch Comparison with Last Year



Cumulative dispatch
From 01/01/2023 To 06/09/2023
From 01/01/2024 To 06/09/2024

6775 GWh
7205 GWh

The above figures are including contribution from roof top solar, non telemetered solar and mini hydro plants)
Unserviced energy due to power cuts has been excluded in 2023

Thermal Plant Fuel types

Table 08

Power Station	Primary Fuel
CEB Thermal	
Sapugaskanda 1	Heavy Fuel
Sapugaskanda 2	Heavy Fuel
Kelanitissa Small Gas Turbines	Auto Diesel
GT 7 - Kelanitissa	Auto Diesel
Kelanitissa CCY	Naphtha or Diesel
Lakvijaya 1	Coal
Lakvijaya 2	Coal
Lakvijaya 3	Coal
Uthuru Janani	Heavy Fuel
Barge CEB	Heavy Fuel
KCCPS -2	Auto Diesel

Power Station	Primary Fuel
Private Thermal	
West Coast	Auto Diesel / Heavy Fuel
Sobadhanavi	Auto Diesel

Major Incidents reported during the day

June 9, 2024

- 1) Biyagama Statcom T/F, which was tripped on 08/06/2024 at 22:46hrs, normalized at 17:54hrs.
- 2) Kukule Ganga pond spilling continues to the present hour.