

Generation and Reservoirs Statistics

June 8, 2024



PUBLIC UTILITIES COMMISSION OF SRI LANKA

1. Daily Generation Mix in MWh

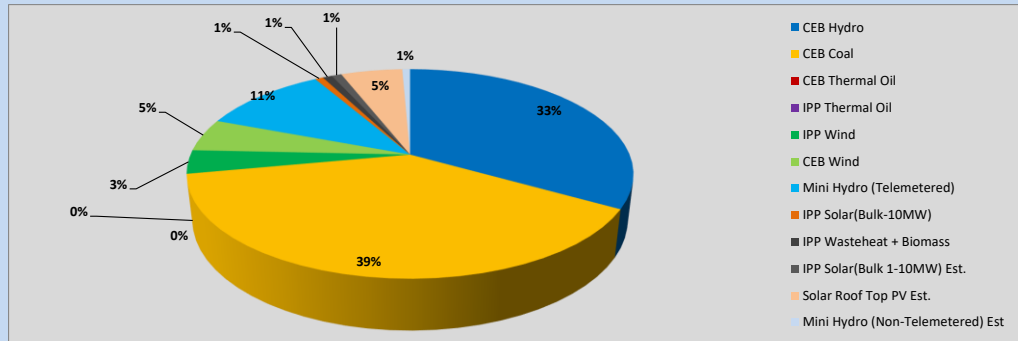


Table 01

	Generation (MWh)
CEB Hydro	14,462
CEB Coal	16,961
CEB Thermal Oil	-
IPP Thermal Oil	-
IPP Wind	1,581
CEB Wind	2,202
Mini Hydro (Telemetered)	4,752
IPP Solar (Bulk)	305
IPP Waste heat + Biomass	355
Total Generation (Excluding estimated figures)	40,618
* Estimated unserved energy	0
* Estimated Mini Hydro (Non telemetered)	294
* Estimated IPP Solar PV (Bulk 1-10MW)	373
* Estimated Solar Roof Top PV	2320
Total Generation (Including estimated figures)	43,605

* Estimated figures of CEB generation report

Table 02

	Installed Capacity (MW)
CEB Hydro	1533
CEB Coal	810
CEB Thermal Oil	773.1
IPP Thermal Oil (West Coast)	490
IPP Wind	163
CEB Wind	100
Mini Hydro	422
IPP Waste heat + Biomass	54
IPP Solar	137
Rooftop Solar (Ordinary)	326
Rooftop Solar (LT Bulk)	285
Rooftop Solar (HT Bulk)	79

Data Source - Monthly Review Report [Jan-2024]

2. Cumulative Dispatch

Following data excludes the contribution from roof top solar, non telemetered solar and mini hydro plants

Table 03 - Current Month

Category	Dispatch (GWh)	
CEB Hydro	138	39.06%
CEB Coal	109	30.79%
CEB Thermal Oil	14	3.86%
IPP Thermal	4	1.10%
SPP Wind	11	3.20%
CEB Wind	15	4.15%
Mini Hydro *	38	10.69%
IPP Solar *	23	6.52%
IPP Waste heat + BMP	2	0.62%
Total	354	

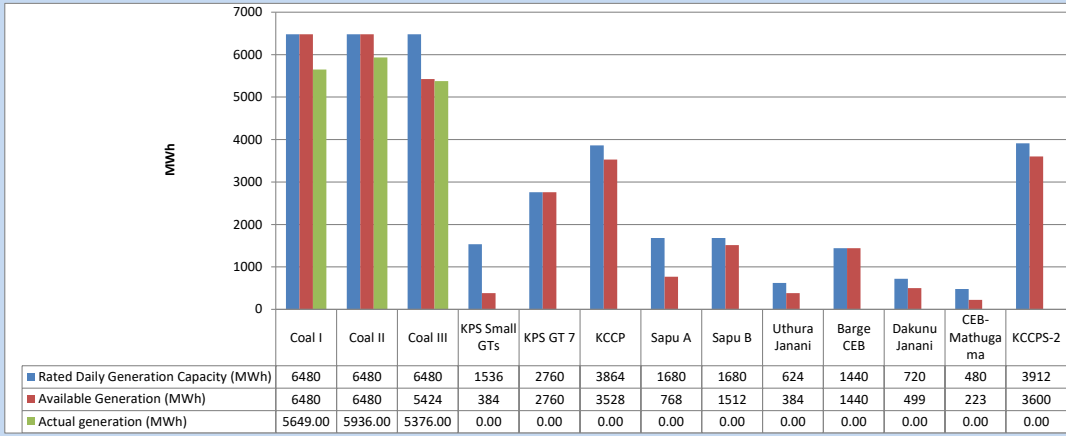
Table 04 - Current Year

Category	Dispatch (GWh)	
CEB Hydro	2,179	30.41%
CEB Coal	2,588	36.12%
CEB Thermal Oil	849	11.84%
IPP Thermal	422	5.89%
SPP Wind	99	1.38%
CEB Wind	109	1.52%
Mini Hydro *	453	6.33%
IPP Solar *	404	5.64%
IPP Waste heat	62	0.87%
Total	7,166	

*Including estimated contribution from non telemetered plants

3. CEB owned Thermal Plant Dispatch

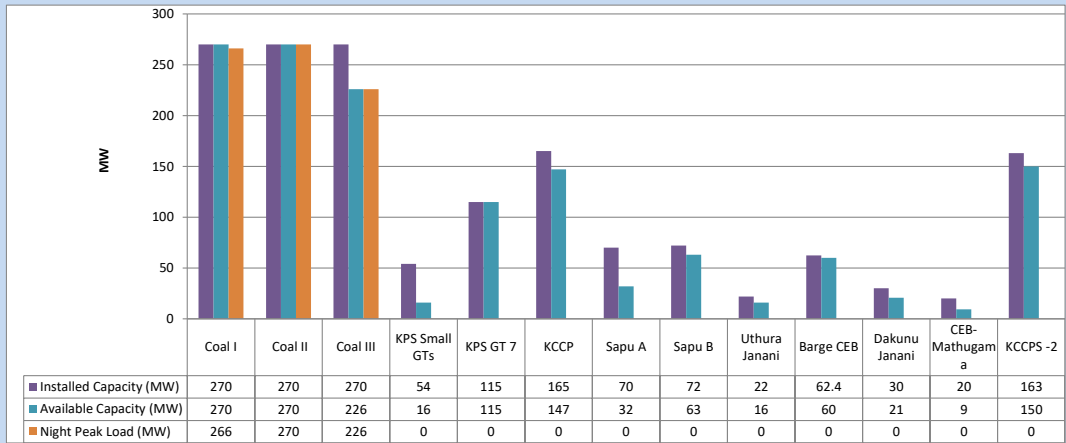
June 8, 2024



Available Generation is estimated based on plant availability at 6.00am on

June 9, 2024

4. CEB owned Thermal Plant Loading at the Night Peak

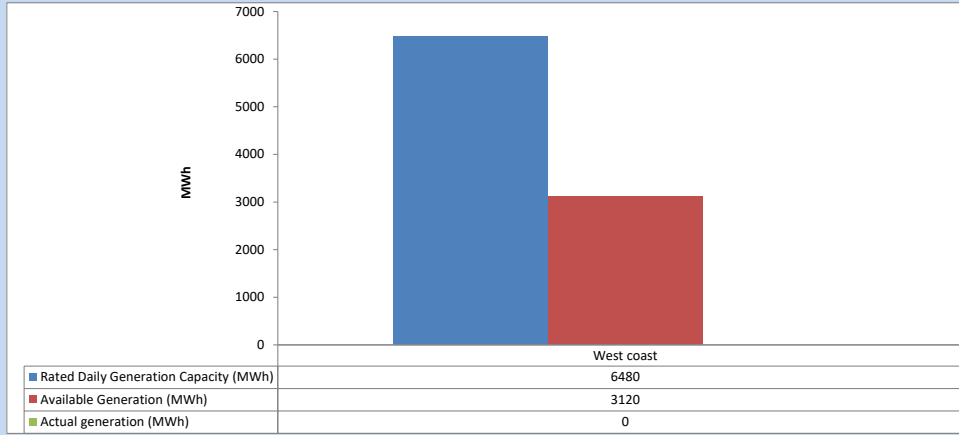


Plant availability is recorded at 6.00 am on

June 9, 2024

5. IPP owned Thermal Plant Dispatch

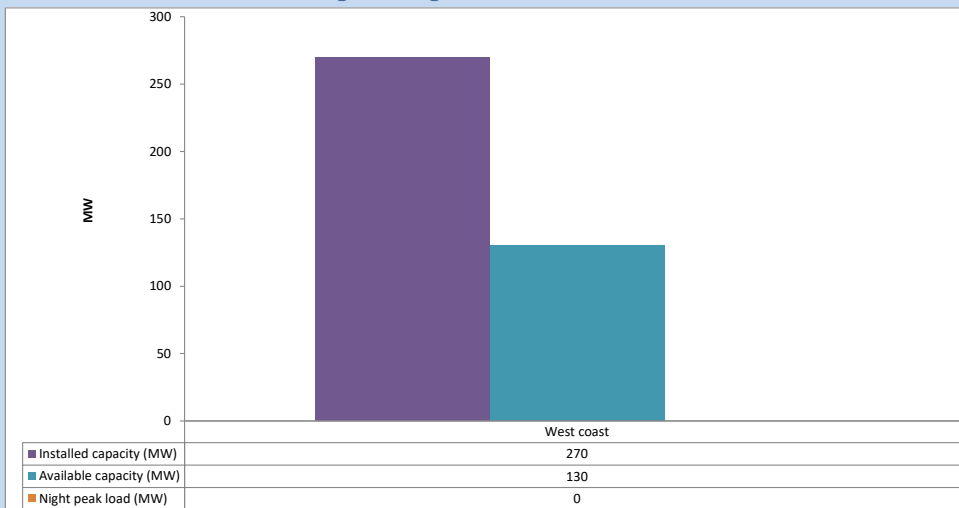
June 8, 2024



Available Generation is estimated based on plant availability at 6.00am on

June 9, 2024

6. IPP owned Thermal Plant Loading at the Night Peak

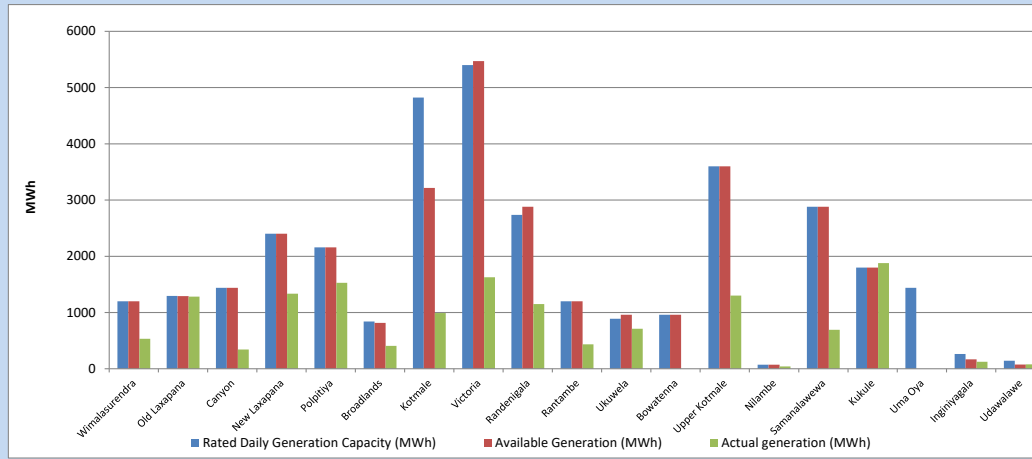


Plant availability is recorded at 6.00 am on

June 9, 2024

7. Major Hydro Plant Dispatch

June 8, 2024

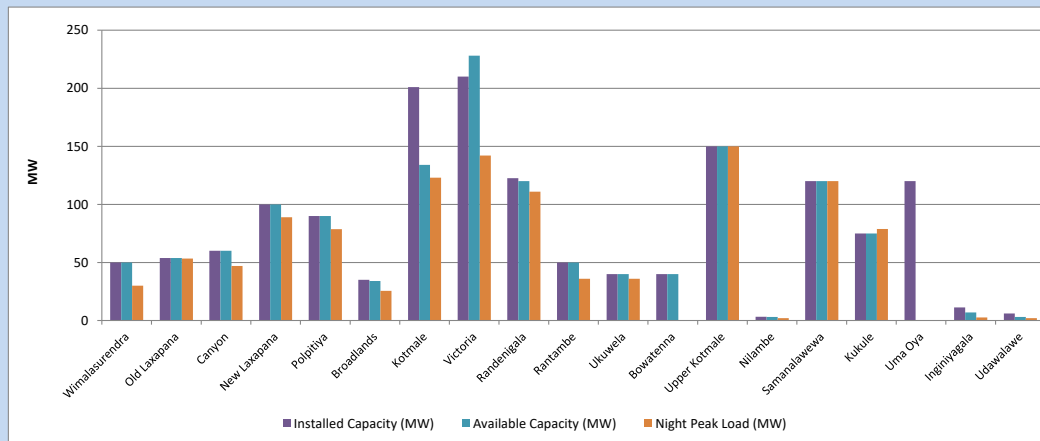


Available Generation is estimated based on plant availability at 6.00am on
Broadlands power plant is operating in the Commissioning Stage

June 9, 2024

8. Major Hydro Plant Loading at Night Peak

June 8, 2024



Plant availability is recorded at 6.00 am on
Broadlands power plant is operating in the Commissioning Stage

June 9, 2024

9. Summary of Major Plant performance

Table 05

Plant	Maximum Available Total Capacity	Plant Availability	Night peak Load	Plant Dispatch
	(MW)	(MW)	(MW)	(MWh)
Wimalasurendra	50	50	30	534
Old Laxapana	54	54	53	1,283
Canyon	60	60	47	344
New Laxapana	100	100	89	1,336
Polpitiya	90	90	79	1,530
Broadlands	35	34	26	407
Kotmale	201	134	123	990
Victoria	210	228	142	1,626
Randenigala	123	120	111	1,152
Rantambe	50	50	36	436
Ukuwela	40	40	36	710
Bowatenna	40	40	0	0
Upper Kotmale	150	150	150	1,301
Nilambe	3	3	2	40
Samanalawewa	120	120	120	693
Kukule	75	75	79	1,879
Uma Oya (Testing)	120	0	0	0
Inginiyagala	11	7	3	124
Udawalawe	6	3	2	79
Puttalam Coal I	270	270	266	5,649
Puttalam Coal II	270	270	270	5,936
Puttalam Coal III	270	226	226	5,376
KPS Small GTs	54	16	0	0
KPS GT 7	115	115	0	0
KCCP	165	147	0	0
Sapugaskanda A	70	32	0	0
Sapugaskanda B	72	63	0	0
Uthura Janani	22	16	0	0
Barge CEB	62	60	0	0
CEB-Hambantota	30	21	0	0
CEB-Mathugama	20	9	0	0
ACE Matara	24	0	0	0
Asia Power	50	0	0	0
KCCPS -2	163	150	0	0
West Coast	270	130	0	0
Nothern Power	36	0	0	0
ACE Embilipitiya	93	0	0	0
Sobadhanavi	220	0	0	0
Total	3,594	2,883	2,258	40,620

Note-

Plant availability is the availability recorded at 6 am on
Installed Capacity is sourced from CEB Annual Report- 2022

June 9, 2024

10. Contribution to the Night Peak in MW

June 8, 2024

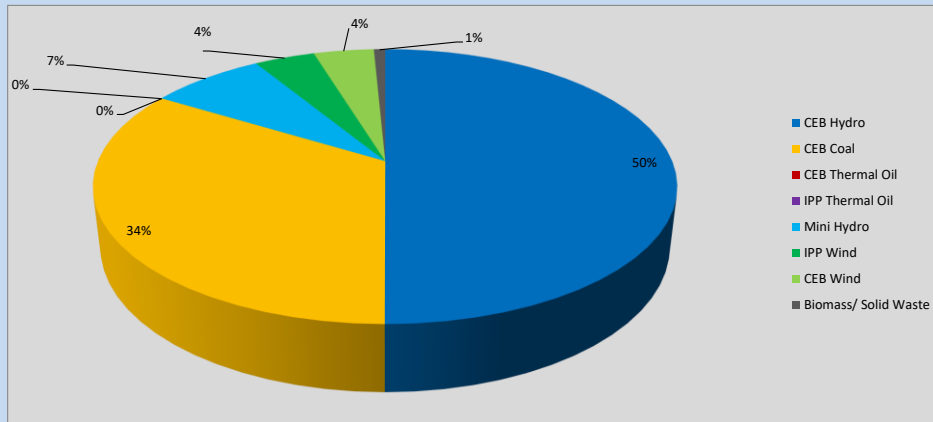


Table 06

CEB Hydro	1132	MW
CEB Coal	762	MW
CEB Thermal Oil	0	MW
IPP Thermal Oil	0	MW
Mini Hydro (Telemetered)	172	MW
IPP Wind	90.4	MW
CEB Wind	90.3	MW
Biomass/ Solid Waste	17	MW

Recorded Peak Demand Data

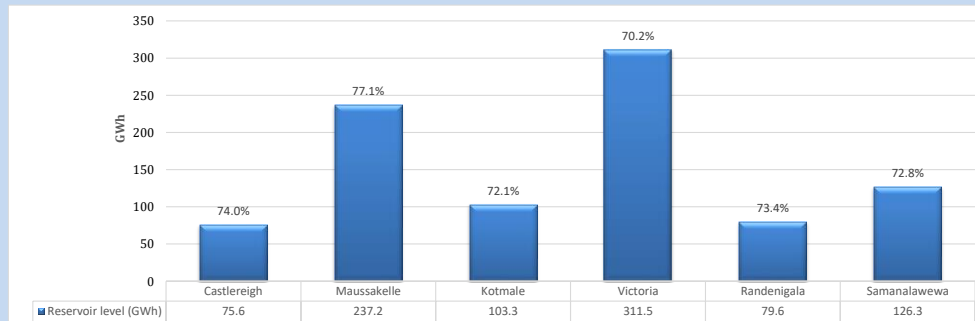
Table 07

Night Peak*	2,264	MW
Day Peak Maximum Demand	1,912	MW
Day Peak Minimum Demand	1,540	MW
Off Peak Minimum Demand	1,372	MW

Above figures are excluding contribution from roof top solar, non telemetered solar and mini hydro plants

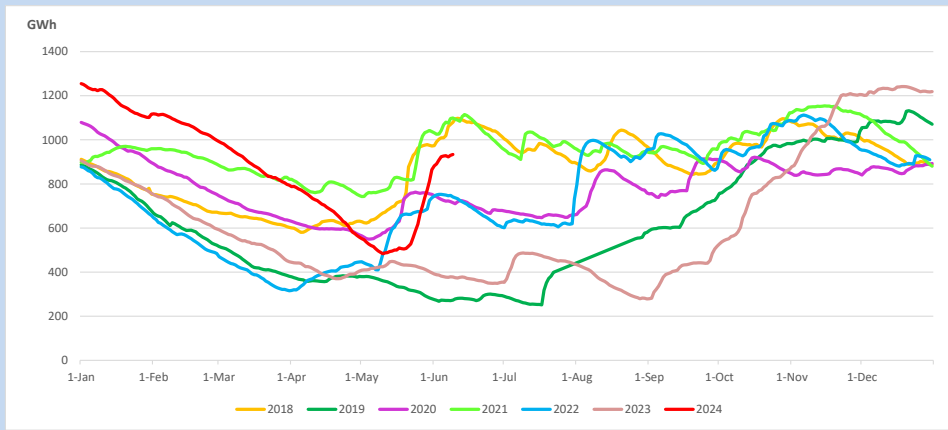
Reservoir Levels -

as at 06.00 Hr on June 9, 2024

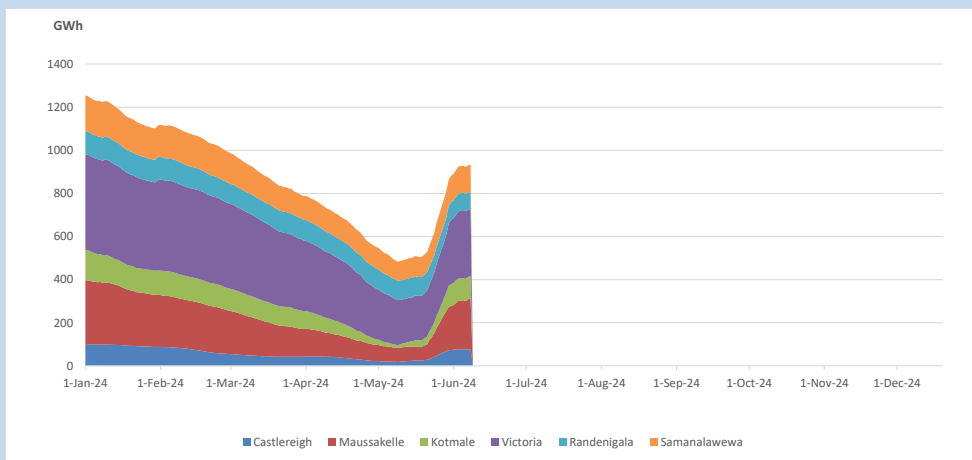


Total Reservoir Level 933.5 GWh
% of Total capacity 73.0%

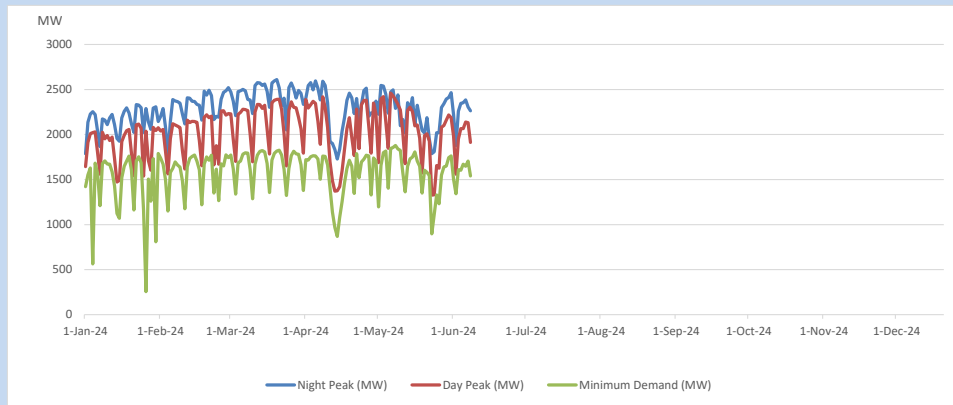
11. Comparison of Total Reservoir Storage Levels with Past Years



12. Variation of Major Hydro Reservoir Levels in the current year (GWh)



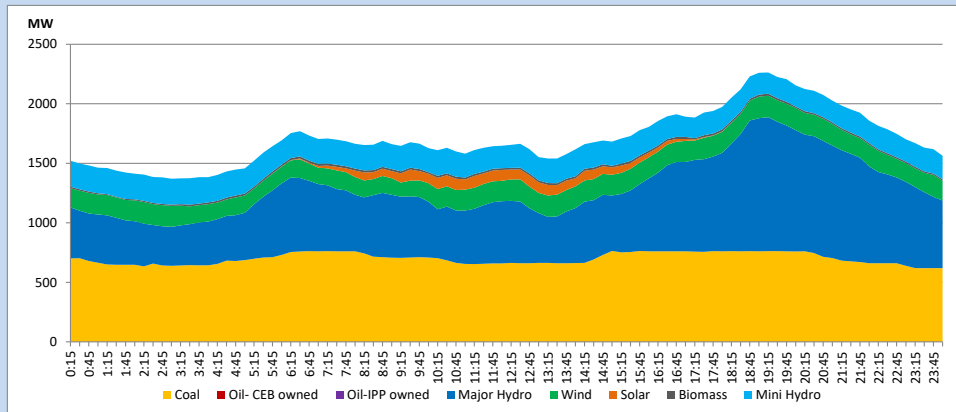
13. Variation of Demand during the current year



The above figures are excluding contribution from roof top solar, non telemetered solar and mini hydro plants

14. Daily Load Curve

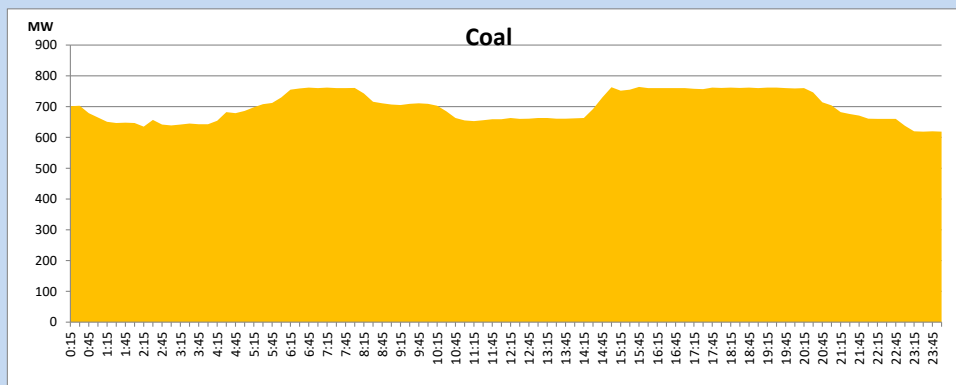
June 8, 2024



Solar and wind data is based on Telemetered Power Stations only

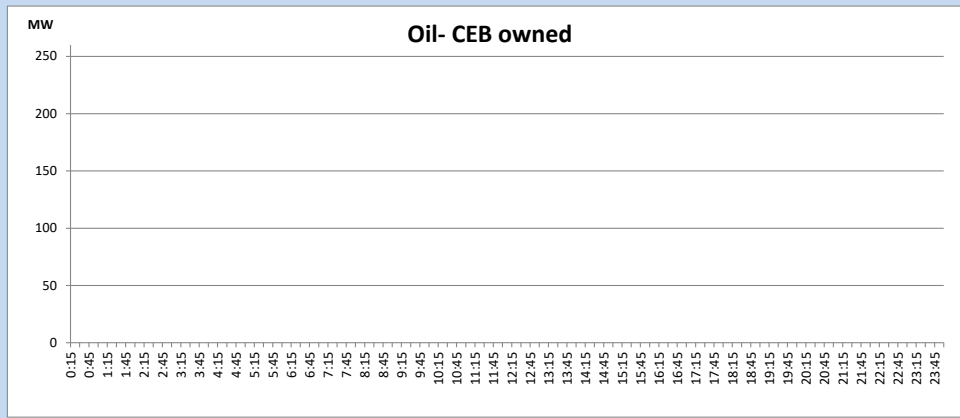
Coal Generation during

June 8, 2024



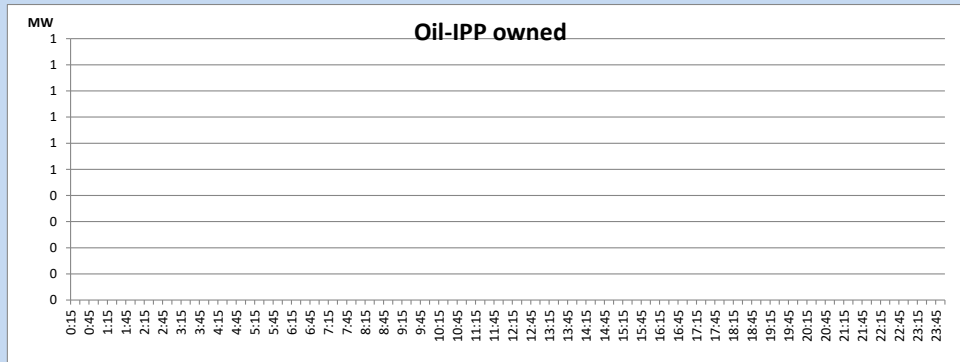
CEB Oil Plant Generation during

June 8, 2024



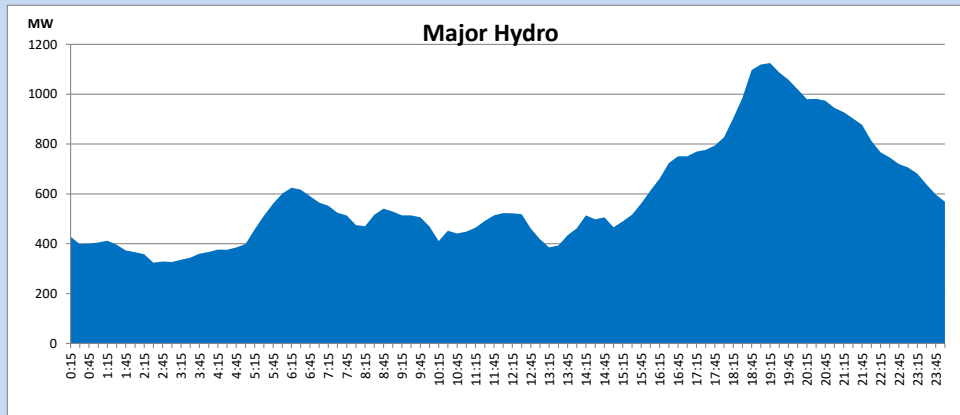
IPP Oil Plant Generation during

June 8, 2024



Major Hydro Generation during

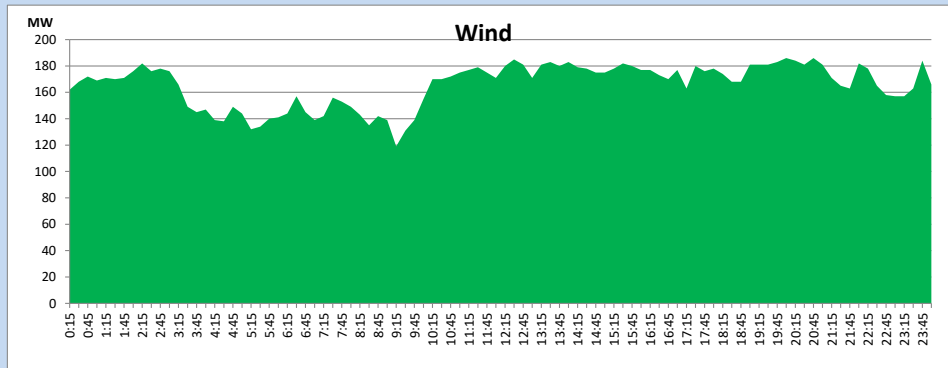
June 8, 2024



Wind Generation during

June 8, 2024

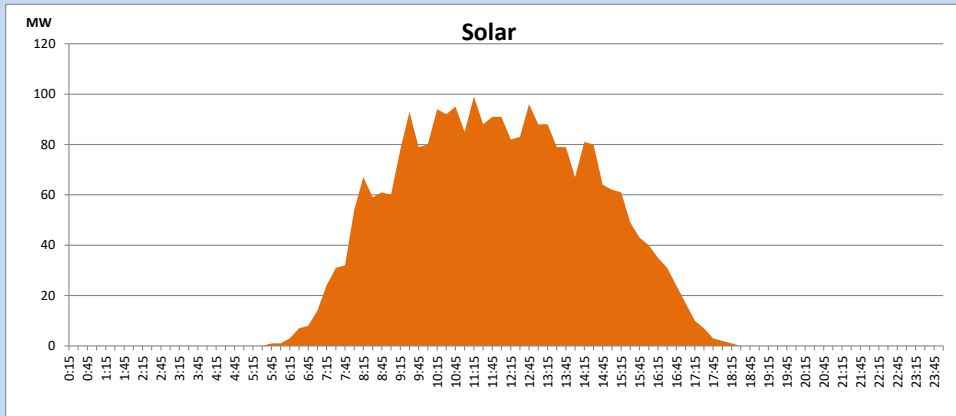
Based on Telemetered Power Stations only



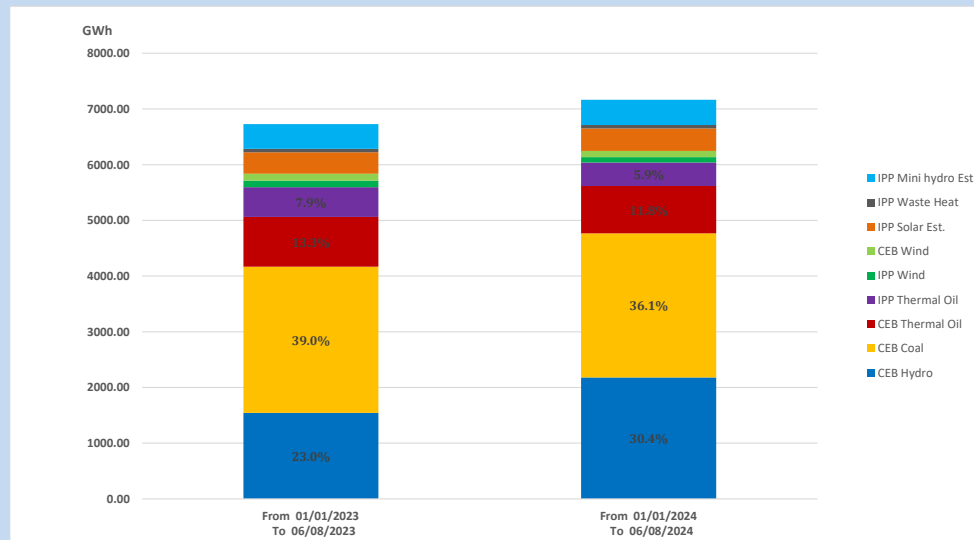
Solar Generation during

June 8, 2024

Based on Telemetered Power Stations only



15. Cumulative Dispatch Comparison with Last Year



Cumulative dispatch
 From 01/01/2023 To 06/08/2023
 From 01/01/2024 To 06/08/2024

6729 GWh
 7166 GWh

The above figures are including contribution from roof top solar, non telemetered solar and mini hydro plants)
 Unused energy due to power cuts has been excluded in 2023

Thermal Plant Fuel types

Table 08

Power Station	Primary Fuel
CEB Thermal	
Sapugaskanda 1	Heavy Fuel
Sapugaskanda 2	Heavy Fuel
Kelanitissa Small Gas Turbines	Auto Diesel
GT 7 - Kelanitissa	Auto Diesel
Kelanitissa CCY	Naphtha or Diesel
Lakvijaya 1	Coal
Lakvijaya 2	Coal
Lakvijaya 3	Coal
Uthuru Janani	Heavy Fuel
Barge CEB	Heavy Fuel
KCCPS -2	Auto Diesel

Power Station	Primary Fuel
Private Thermal	
West Coast	Auto Diesel / Heavy Fuel
Sobadhanavi	Auto Diesel

Major Incidents reported during the day

June 8, 2024

- 1) Valachchenai Feeder 06 tripped and A/R at 14:06hrs due to the operation of Overcurrent protection. At the same time valachchenai 132/33kV T/F 01 tripped from both ends due to the operation of Directional overcurrent protection . The T/F was normalized at 14:19hrs.
- 2) New Polpitiya - Polpitiya PS 132kV cct which was manually switched off on 07.06.2024 was normalized at 14:33hrs.
- 3) Biyagama 220/132/33kV T/F 01 was normalized at 15:12hrs.
- 4) Biyagama Statcom T/F tripped at 22:46hrs with the indication of 'Lockout Operated'. The T/F is yet to be normalized.
- 5) Kukule Ganga pond spilling continues to the present hour.