

Generation and Reservoirs Statistics

June 5, 2024



PUBLIC UTILITIES COMMISSION OF SRI LANKA

1. Daily Generation Mix in MWh

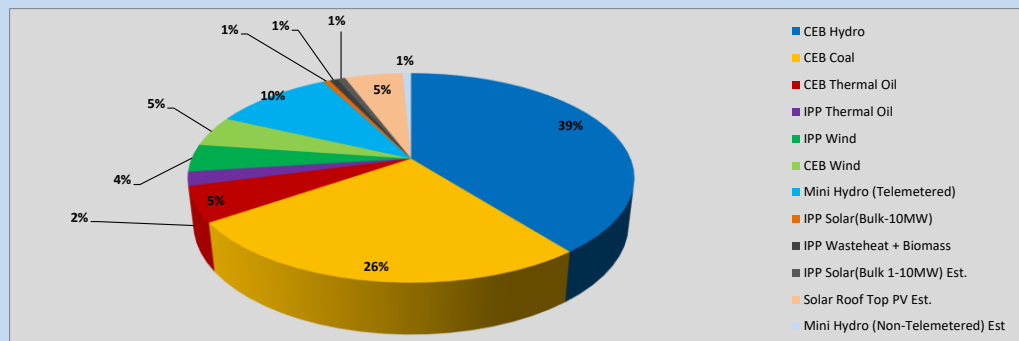


Table 01

	Generation (MWh)
CEB Hydro	18,232
CEB Coal	12,024
CEB Thermal Oil	2,515
IPP Thermal Oil	997
IPP Wind	1,955
CEB Wind	2,185
Mini Hydro (Telemetered)	4,779
IPP Solar (Bulk)	267
IPP Waste heat + Biomass	316
Total Generation (Excluding estimated figures)	43,270
* Estimated unserved energy	0
* Estimated Mini Hydro (Non telemetered)	345
* Estimated IPP Solar PV (Bulk 1-10MW)	326
* Estimated Solar Roof Top PV	2320
Total Generation (Including estimated figures)	46,261

* Estimated figures of CEB generation report

Table 02

	Installed Capacity (MW)
CEB Hydro	1533
CEB Coal	810
CEB Thermal Oil	773.1
IPP Thermal Oil (West Coast)	490
IPP Wind	163
CEB Wind	100
Mini Hydro	422
IPP Waste heat + Biomass	54
IPP Solar	137
Rooftop Solar (Ordinary)	326
Rooftop Solar (LT Bulk)	285
Rooftop Solar (HT Bulk)	79

Data Source - Monthly Review Report [Jan-2024]

2. Cumulative Dispatch

Following data excludes the contribution from roof top solar, non telemetered solar and mini hydro plants

Table 03 - Current Month

Category	Dispatch (GWh)	
CEB Hydro	89	41.16%
CEB Coal	62	28.57%
CEB Thermal Oil	9	4.19%
IPP Thermal	3	1.55%
SPP Wind	6	2.89%
CEB Wind	8	3.74%
Mini Hydro *	23	10.70%
IPP Solar *	14	6.66%
IPP Waste heat + BMP	1	0.54%
Total	217	

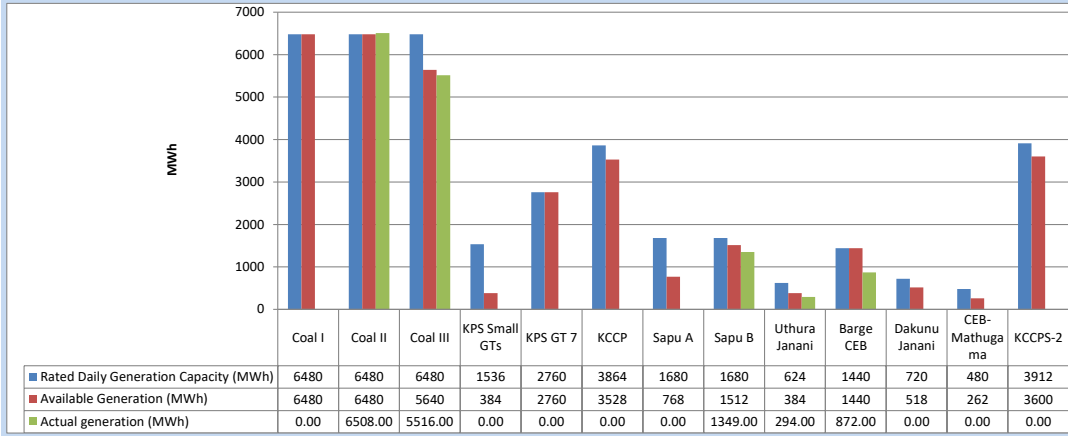
Table 04 - Current Year

Category	Dispatch (GWh)	
CEB Hydro	2,130	30.30%
CEB Coal	2,541	36.16%
CEB Thermal Oil	844	12.01%
IPP Thermal	422	6.00%
SPP Wind	94	1.33%
CEB Wind	102	1.46%
Mini Hydro *	439	6.24%
IPP Solar *	395	5.63%
IPP Waste heat	61	0.87%
Total	7,028	

*Including estimated contribution from non telemetered plants

3. CEB owned Thermal Plant Dispatch

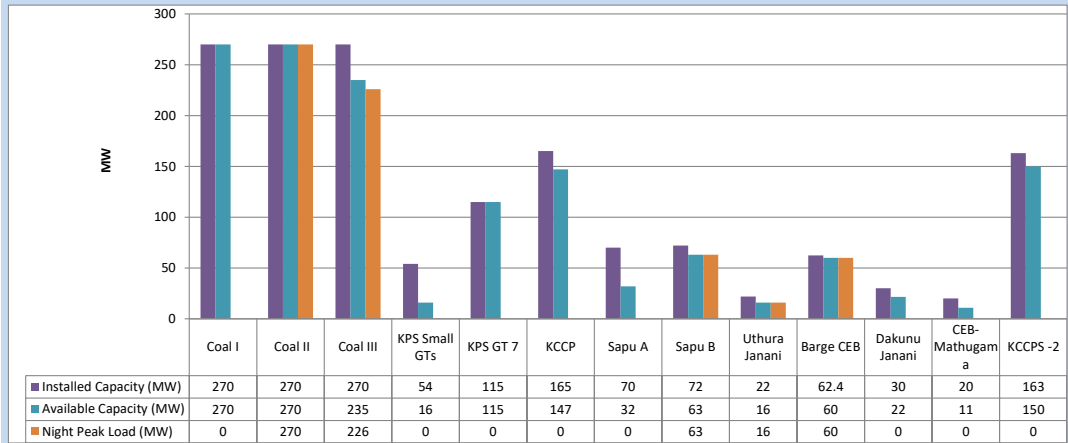
June 5, 2024



Available Generation is estimated based on plant availability at 6.00am on

June 6, 2024

4. CEB owned Thermal Plant Loading at the Night Peak

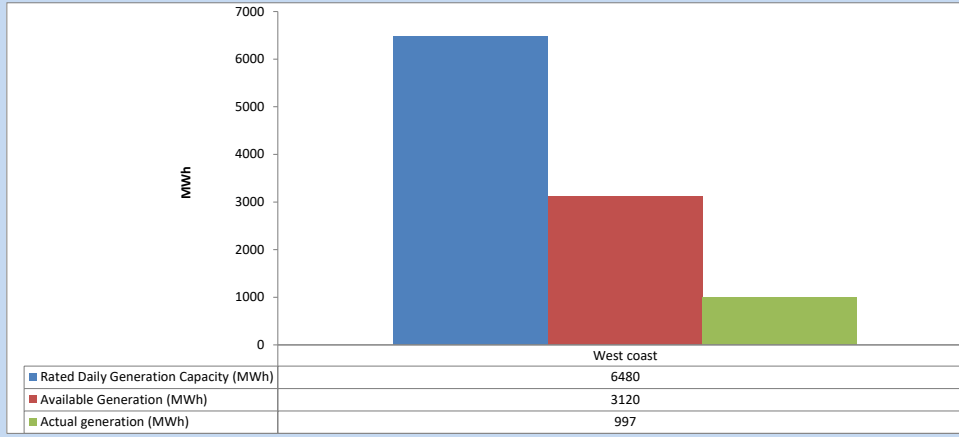


Plant availability is recorded at 6.00 am on

June 6, 2024

5. IPP owned Thermal Plant Dispatch

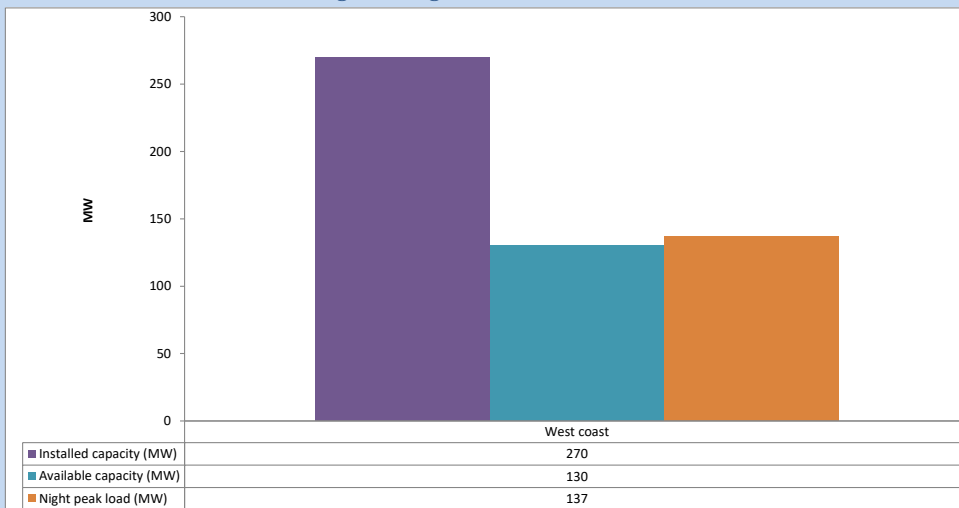
June 5, 2024



Available Generation is estimated based on plant availability at 6.00am on

June 6, 2024

6. IPP owned Thermal Plant Loading at the Night Peak

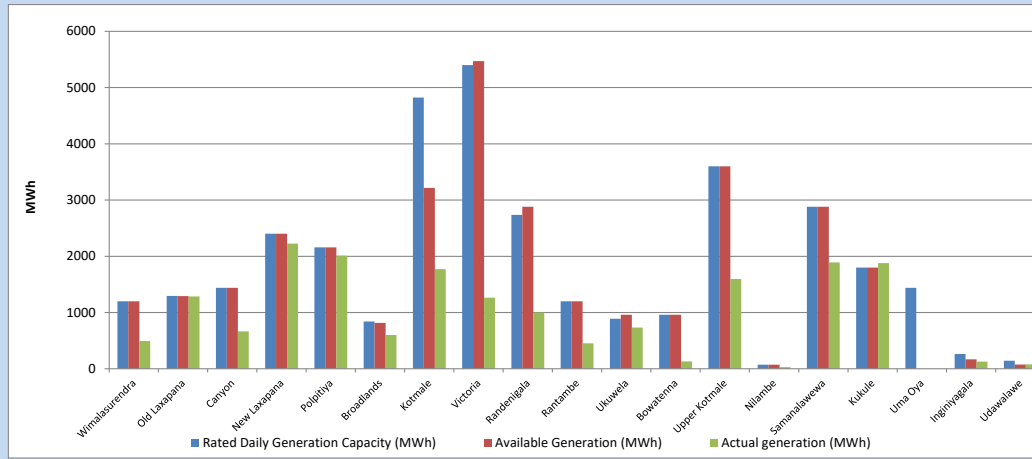


Plant availability is recorded at 6.00 am on

June 6, 2024

7. Major Hydro Plant Dispatch

June 5, 2024

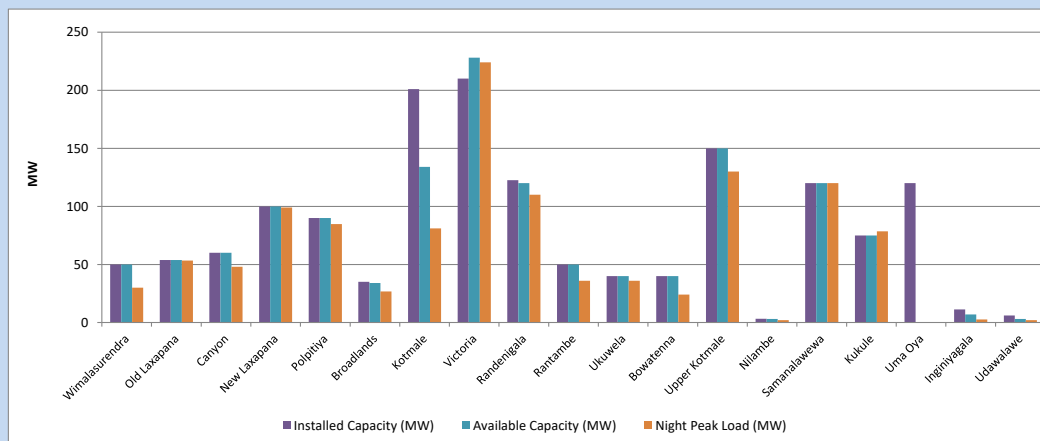


Available Generation is estimated based on plant availability at 6.00am on
Broadlands power plant is operating in the Commissioning Stage

June 6, 2024

8. Major Hydro Plant Loading at Night Peak

June 5, 2024



Plant availability is recorded at 6.00 am on
Broadlands power plant is operating in the Commissioning Stage

June 6, 2024

9. Summary of Major Plant performance

Table 05

Plant	Maximum Available Total Capacity	Plant Availability	Night peak Load	Plant Dispatch
	(MW)	(MW)	(MW)	(MWh)
Wimalasurendra	50	50	30	493
Old Laxapana	54	54	53	1,287
Canyon	60	60	48	665
New Laxapana	100	100	99	2,227
Polpitiya	90	90	85	2,010
Broadlands	35	34	27	601
Kotmale	201	134	81	1,770
Victoria	210	228	224	1,265
Randenigala	123	120	110	1,001
Rantambe	50	50	36	453
Ukuwela	40	40	36	734
Bowatenna	40	40	24	130
Upper Kotmale	150	150	130	1,597
Nilambe	3	3	2	29
Samanalawewa	120	120	120	1,890
Kukule	75	75	79	1,878
Uma Oya (Testing)	120	0	0	0
Inginiyagala	11	7	3	127
Udawalawe	6	3	2	77
Puttalam Coal I	270	270	0	0
Puttalam Coal II	270	270	270	6,508
Puttalam Coal III	270	235	226	5,516
KPS Small GTs	54	16	0	0
KPS GT 7	115	115	0	0
KCCP	165	147	0	0
Sapugaskanda A	70	32	0	0
Sapugaskanda B	72	63	63	1,349
Uthura Janani	22	16	16	294
Barge CEB	62	60	60	872
CEB-Hambantota	30	22	0	0
CEB-Mathugama	20	11	0	0
ACE Matara	24	0	0	0
Asia Power	50	0	0	0
KCCPS -2	163	150	0	0
West Coast	270	130	137	997
Nothern Power	36	0	0	0
ACE Embilipitiya	93	0	0	0
Sobadhanavi	220	0	0	0
Total	3,594	2,894	2,351	43,272

Note-

Plant availability is the availability recorded at 6 am on
Installed Capacity is sourced from CEB Annual Report- 2022

June 6, 2024

10. Contribution to the Night Peak in MW

June 5, 2024

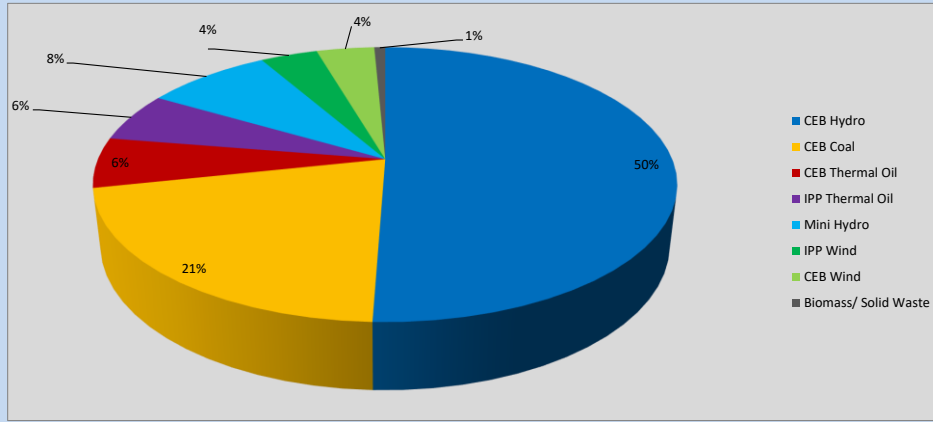


Table 06

CEB Hydro	1190	MW
CEB Coal	496	MW
CEB Thermal Oil	139	MW
IPP Thermal Oil	137	MW
Mini Hydro (Telemetered)	195	MW
IPP Wind	88.8	MW
CEB Wind	90.1	MW
Biomass/ Solid Waste	17	MW

Recorded Peak Demand Data

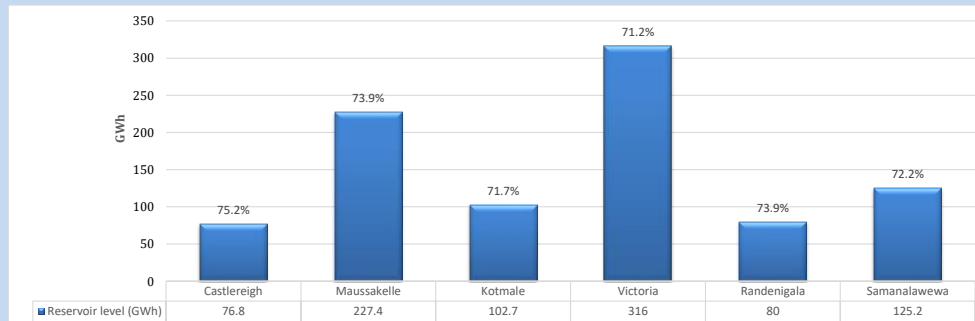
Table 07

Night Peak*	2,353	MW
Day Peak Maximum Demand	2,066	MW
Day Peak Minimum Demand	1,671	MW
Off Peak Minimum Demand	1,381	MW

Above figures are excluding contribution from roof top solar, non telemetered solar and mini hydro plants

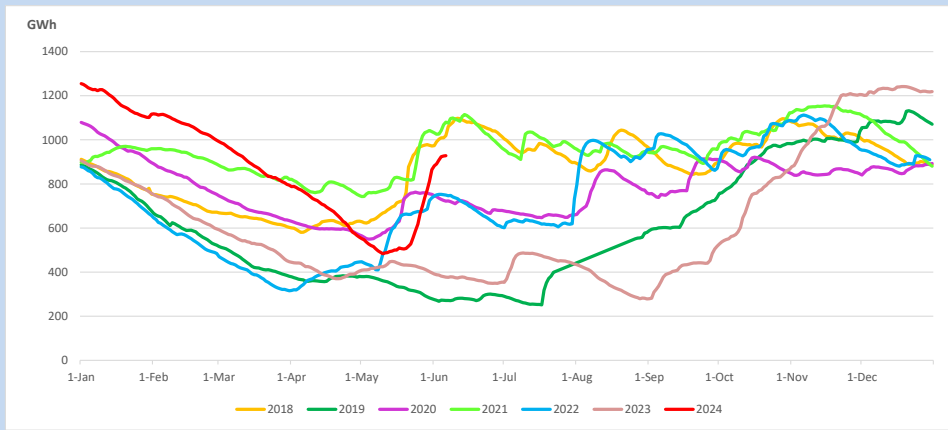
Reservoir Levels -

as at 06.00 Hr on June 6, 2024

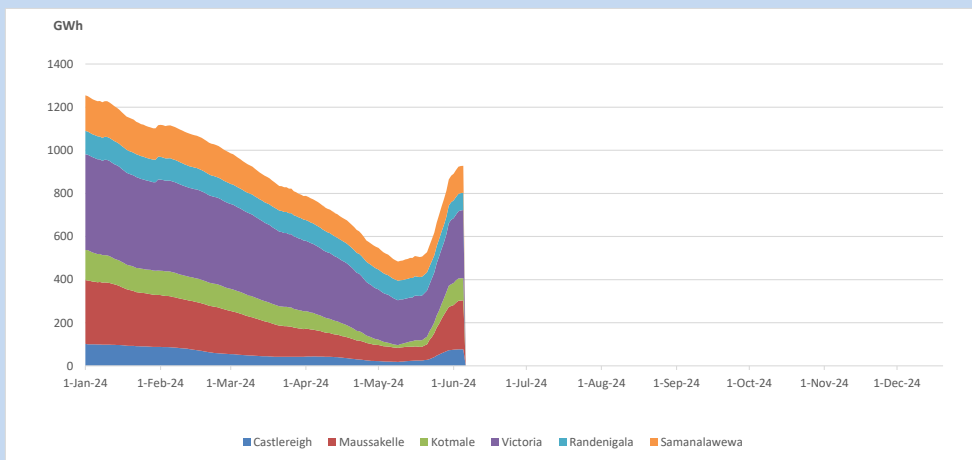


Total Reservoir Level 928.1 GWh
% of Total capacity 72.6%

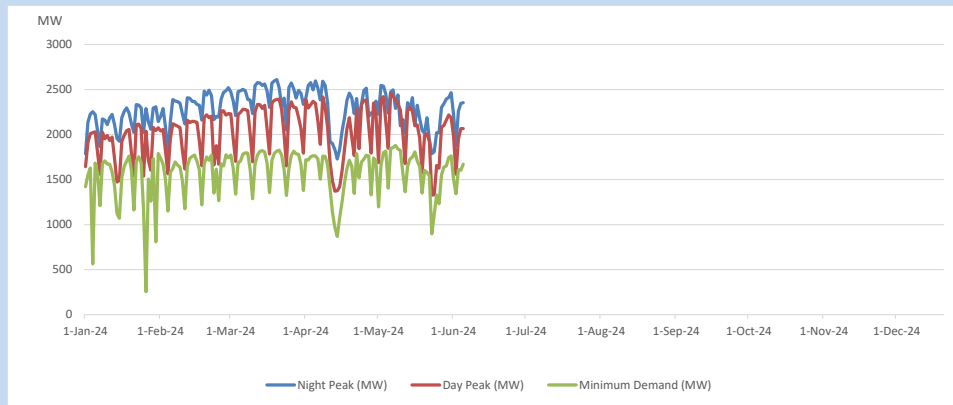
11. Comparison of Total Reservoir Storage Levels with Past Years



12. Variation of Major Hydro Reservoir Levels in the current year (GWh)



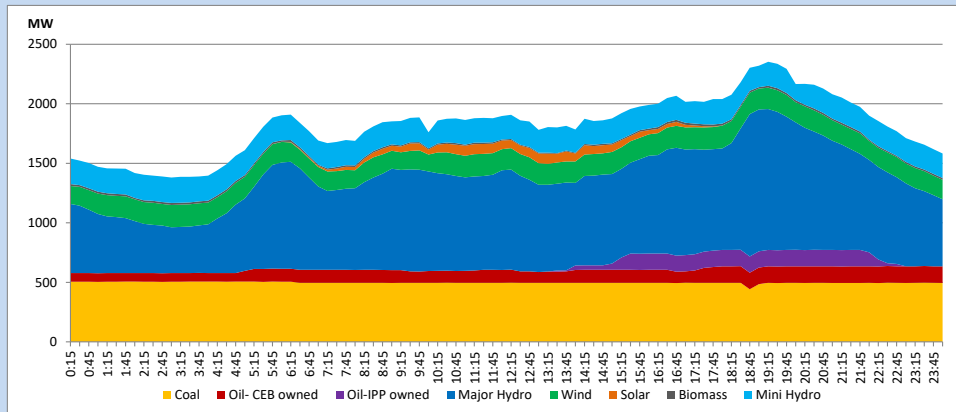
13. Variation of Demand during the current year



The above figures are excluding contribution from roof top solar, non telemetered solar and mini hydro plants

14. Daily Load Curve

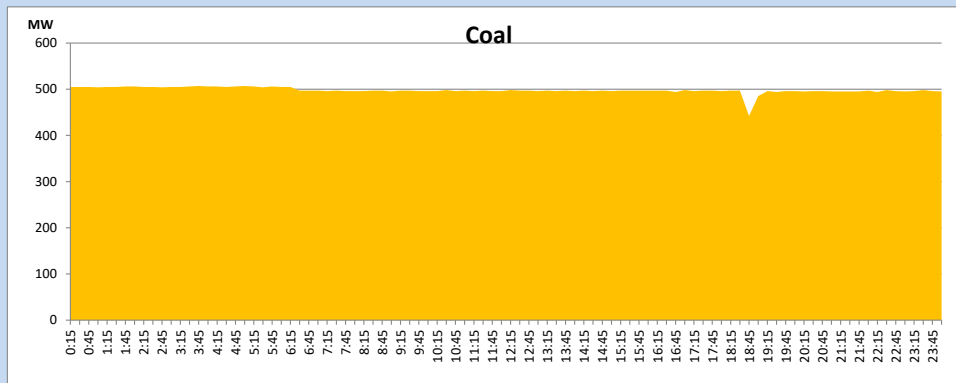
June 5, 2024



Solar and wind data is based on Telemetered Power Stations only

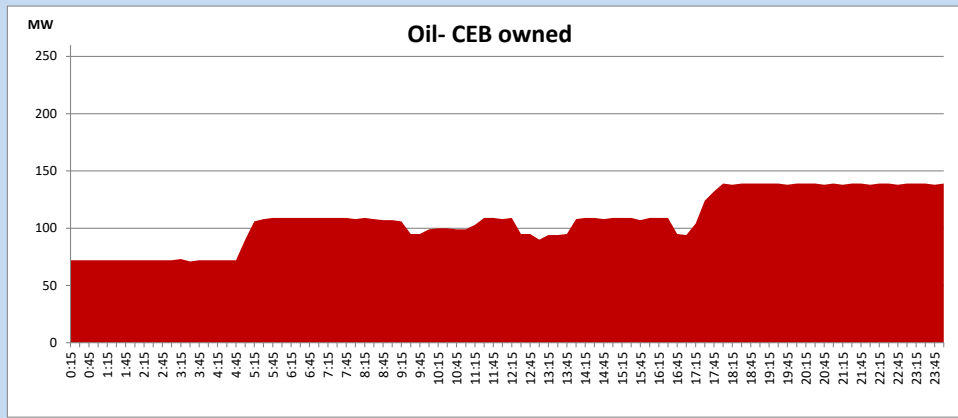
Coal Generation during

June 5, 2024



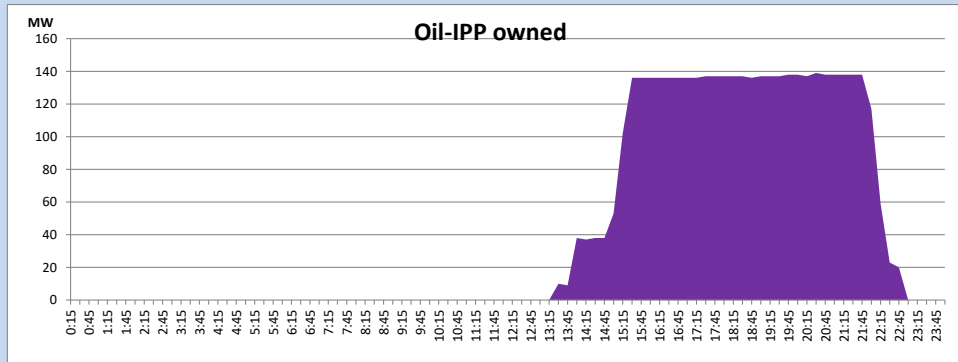
CEB Oil Plant Generation during

June 5, 2024



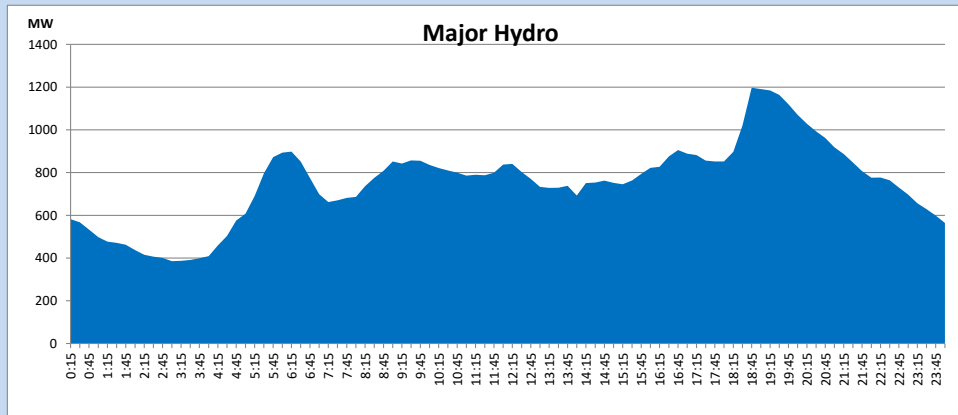
IPP Oil Plant Generation during

June 5, 2024



Major Hydro Generation during

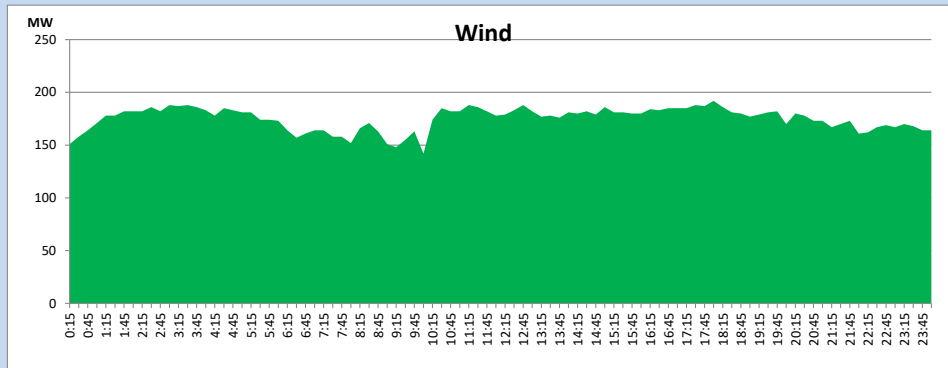
June 5, 2024



Wind Generation during

June 5, 2024

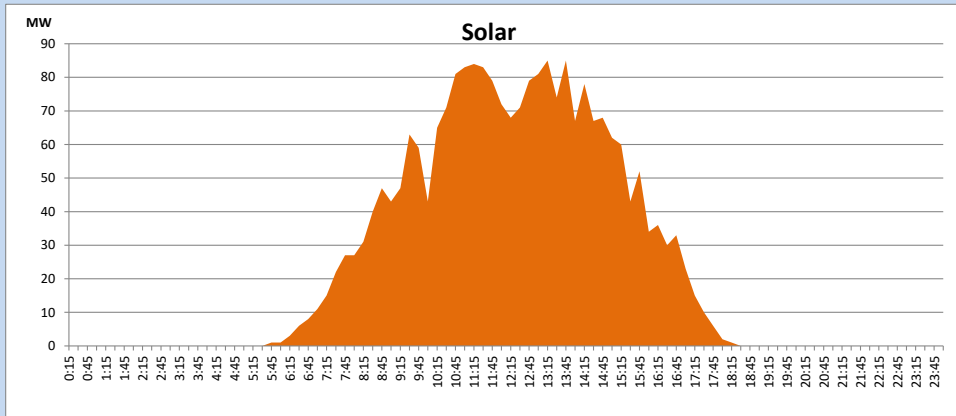
Based on Telemetered Power Stations only



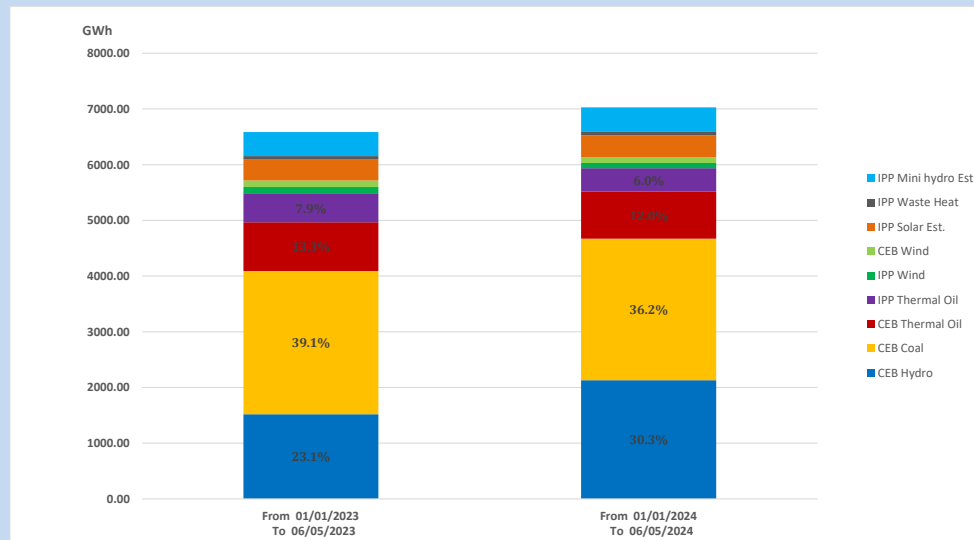
Solar Generation during

June 5, 2024

Based on Telemetered Power Stations only



15. Cumulative Dispatch Comparison with Last Year



Cumulative dispatch
 From 01/01/2023 To 06/05/2023
 From 01/01/2024 To 06/05/2024

6587 GWh
 7028 GWh

The above figures are including contribution from roof top solar, non telemetered solar and mini hydro plants)
 Unused energy due to power cuts has been excluded in 2023

Thermal Plant Fuel types

Table 08

Power Station	Primary Fuel
CEB Thermal	
Sapugaskanda 1	Heavy Fuel
Sapugaskanda 2	Heavy Fuel
Kelanitissa Small Gas Turbines	Auto Diesel
GT 7 - Kelanitissa	Auto Diesel
Kelanitissa CCY	Naphtha or Diesel
Lakvijaya 1	Coal
Lakvijaya 2	Coal
Lakvijaya 3	Coal
Uthuru Janani	Heavy Fuel
Barge CEB	Heavy Fuel
KCCPS -2	Auto Diesel

Power Station	Primary Fuel
Private Thermal	
West Coast	Auto Diesel / Heavy Fuel
Sobadhanavi	Auto Diesel

Major Incidents reported during the day

June 5, 2024

- 1) LVPS unit 02 de-loaded to 210MW (net) at 18:35hrs due to a tripping of a coal mill. LVPS unit 02 reached full load at 19:06hrs.
- 2) Kukule Ganga pond spilling continues to the present hour.