

# Generation and Reservoirs Statistics

June 4, 2024



PUBLIC UTILITIES COMMISSION OF SRI LANKA

## 1. Daily Generation Mix in MWh

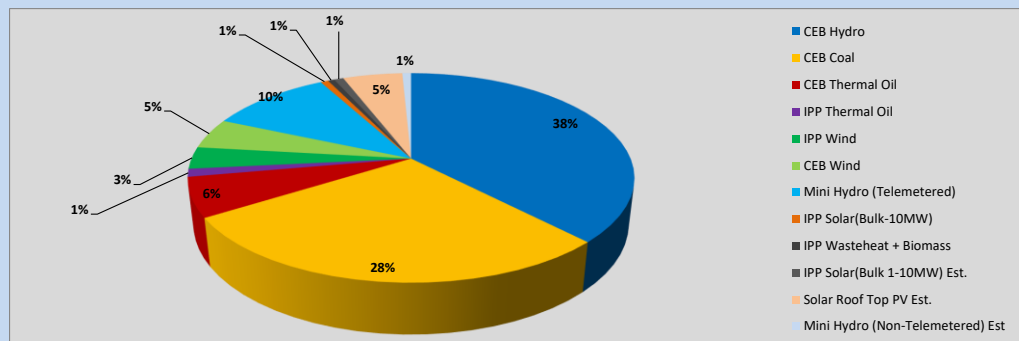


Table 01

	Generation (MWh)
CEB Hydro	16,982
CEB Coal	12,794
CEB Thermal Oil	2,739
IPP Thermal Oil	548
IPP Wind	1,527
CEB Wind	2,120
Mini Hydro (Telemetered)	4,739
IPP Solar (Bulk)	301
IPP Waste heat + Biomass	252
<b>Total Generation (Excluding estimated figures)</b>	<b>42,002</b>
* Estimated unserved energy	0
* Estimated Mini Hydro (Non telemetered)	342
* Estimated IPP Solar PV (Bulk 1-10MW)	366
* Estimated Solar Roof Top PV	2320
<b>Total Generation (Including estimated figures)</b>	<b>45,030</b>

\* Estimated figures of CEB generation report

Table 02

	Installed Capacity (MW)
CEB Hydro	1533
CEB Coal	810
CEB Thermal Oil	773.1
IPP Thermal Oil (West Coast)	490
IPP Wind	163
CEB Wind	100
Mini Hydro	422
IPP Waste heat + Biomass	54
IPP Solar	137
Rooftop Solar (Ordinary)	326
Rooftop Solar (LT Bulk)	285
Rooftop Solar (HT Bulk)	79

Data Source - Monthly Review Report [Jan-2024]

## 2. Cumulative Dispatch

Following data excludes the contribution from roof top solar, non telemetered solar and mini hydro plants

Table 03 - Current Month

Category	Dispatch (GWh)	
CEB Hydro	71	41.64%
CEB Coal	50	29.28%
CEB Thermal Oil	7	3.85%
IPP Thermal	2	1.38%
SPP Wind	4	2.52%
CEB Wind	6	3.48%
Mini Hydro *	18	10.60%
IPP Solar *	12	6.75%
IPP Waste heat + BMP	1	0.50%
<b>Total</b>	<b>170</b>	

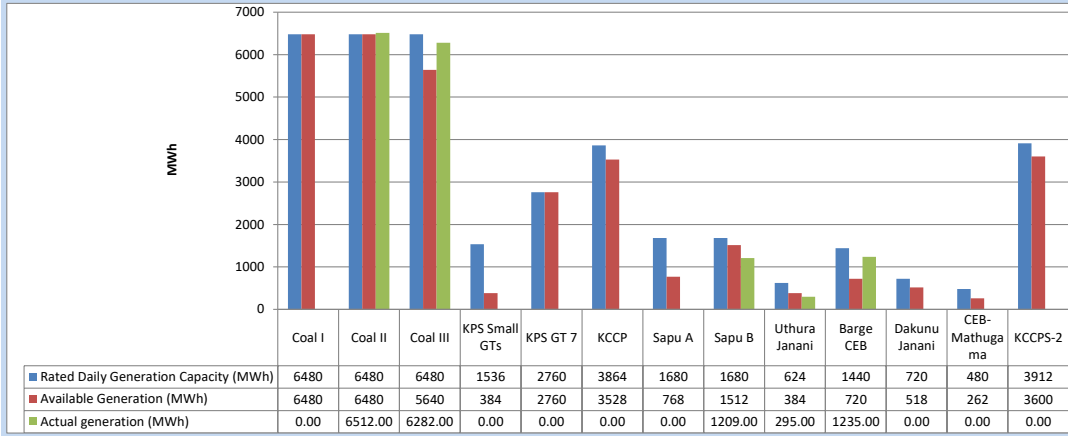
Table 04 - Current Year

Category	Dispatch (GWh)	
CEB Hydro	2,111	30.24%
CEB Coal	2,529	36.23%
CEB Thermal Oil	841	12.05%
IPP Thermal	421	6.02%
SPP Wind	92	1.31%
CEB Wind	100	1.43%
Mini Hydro *	434	6.21%
IPP Solar *	392	5.62%
IPP Waste heat	61	0.87%
<b>Total</b>	<b>6,982</b>	

\*Including estimated contribution from non telemetered plants

### 3. CEB owned Thermal Plant Dispatch

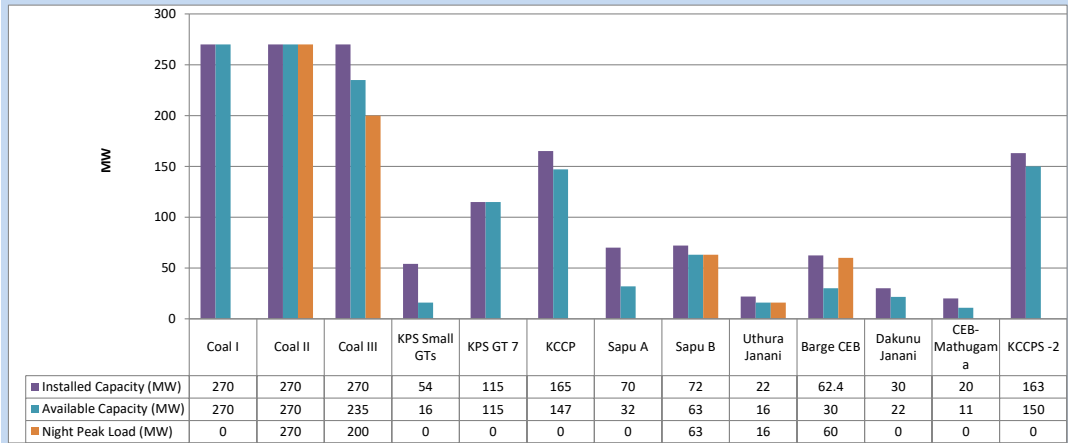
June 4, 2024



Available Generation is estimated based on plant availability at 6.00am on

June 5, 2024

### 4. CEB owned Thermal Plant Loading at the Night Peak

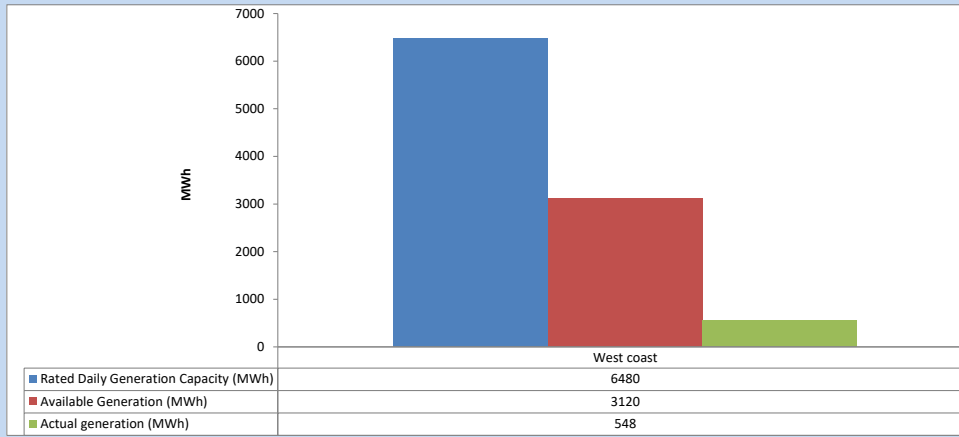


Plant availability is recorded at 6.00 am on

June 5, 2024

### 5. IPP owned Thermal Plant Dispatch

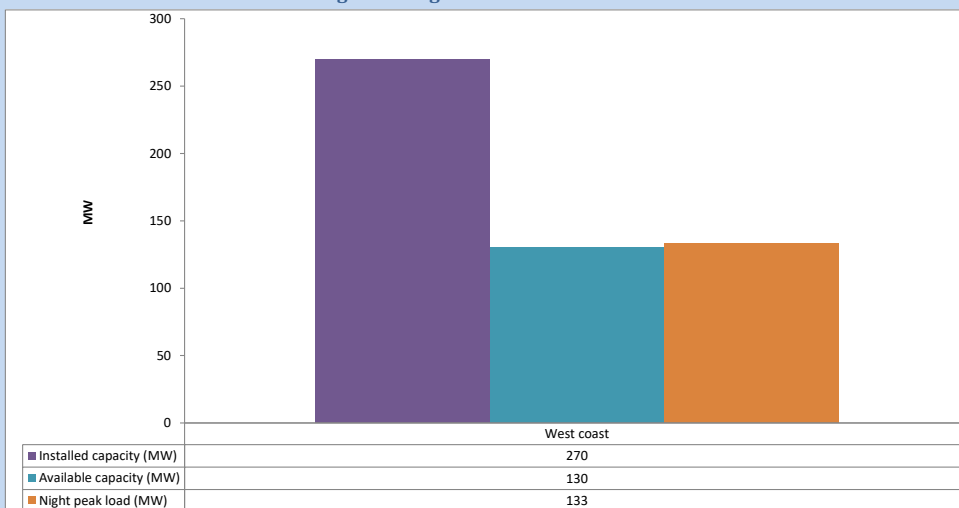
June 4, 2024



Available Generation is estimated based on plant availability at 6.00am on

June 5, 2024

### 6. IPP owned Thermal Plant Loading at the Night Peak

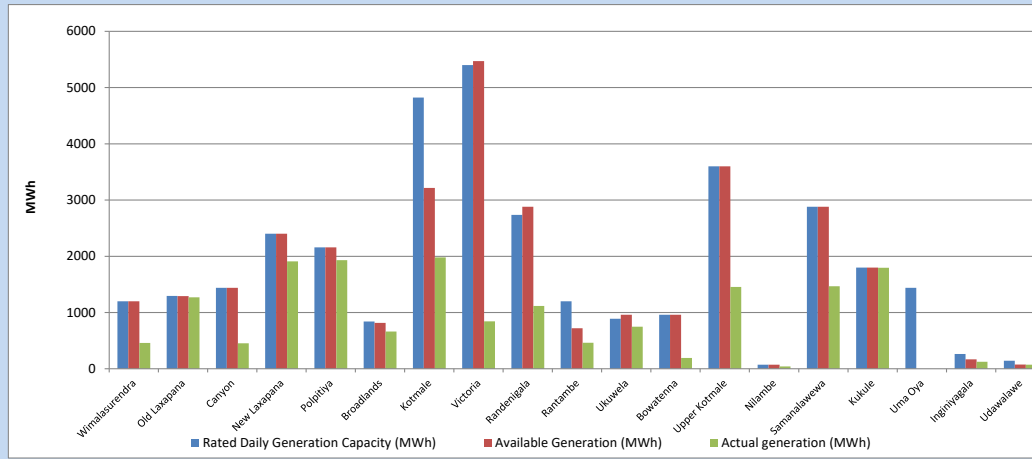


Plant availability is recorded at 6.00 am on

June 5, 2024

## 7. Major Hydro Plant Dispatch

June 4, 2024

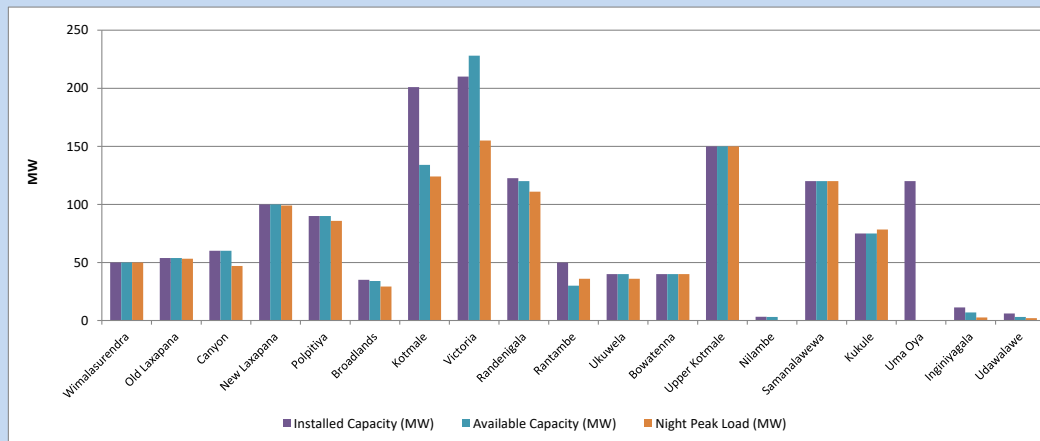


Available Generation is estimated based on plant availability at 6.00am on  
Broadlands power plant is operating in the Commissioning Stage

June 5, 2024

## 8. Major Hydro Plant Loading at Night Peak

June 4, 2024



Plant availability is recorded at 6.00 am on  
Broadlands power plant is operating in the Commissioning Stage

June 5, 2024

## 9. Summary of Major Plant performance

Table 05

Plant	Maximum Available Total Capacity	Plant Availability	Night peak Load	Plant Dispatch
	(MW)	(MW)	(MW)	(MWh)
Wimalasurendra	50	50	50	459
Old Laxapana	54	54	53	1,270
Canyon	60	60	47	454
New Laxapana	100	100	99	1,909
Polpitiya	90	90	86	1,930
Broadlands	35	34	29	663
Kotmale	201	134	124	1,980
Victoria	210	228	155	844
Randenigala	123	120	111	1,117
Rantambe	50	30	36	461
Ukuwela	40	40	36	748
Bowatenna	40	40	40	193
Upper Kotmale	150	150	150	1,454
Nilambe	3	3	0	40
Samanalawewa	120	120	120	1,468
Kukule	75	75	78	1,797
Uma Oya (Testing )	120	0	0	0
Inginiyagala	11	7	3	125
Udawalawe	6	3	2	71
Puttalam Coal I	270	270	0	0
Puttalam Coal II	270	270	270	6,512
Puttalam Coal III	270	235	200	6,282
KPS Small GTs	54	16	0	0
KPS GT 7	115	115	0	0
KCCP	165	147	0	0
Sapugaskanda A	70	32	0	0
Sapugaskanda B	72	63	63	1,209
Uthura Janani	22	16	16	295
Barge CEB	62	30	60	1,235
CEB-Hambantota	30	22	0	0
CEB-Mathugama	20	11	0	0
ACE Matara	24	0	0	0
Asia Power	50	0	0	0
KCCPS -2	163	150	0	0
West Coast	270	130	133	548
Nothern Power	36	0	0	0
ACE Embilipitiya	93	0	0	0
Sobadhanavi	220	0	0	0
<b>Total</b>	<b>3,594</b>	<b>2,844</b>	<b>2,340</b>	<b>42,003</b>

Note-

Plant availability is the availability recorded at 6 am on  
Installed Capacity is sourced from CEB Annual Report- 2022

June 5, 2024

### 10. Contribution to the Night Peak in MW

June 4, 2024

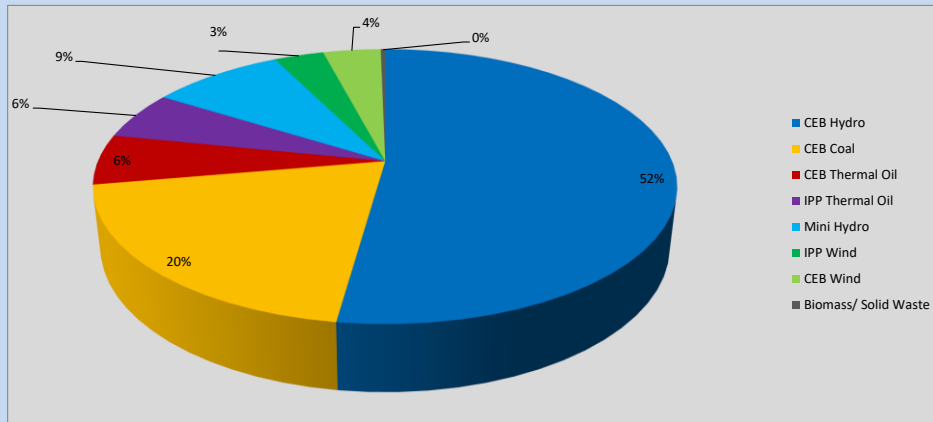


Table 06

CEB Hydro	1225	MW
CEB Coal	470	MW
CEB Thermal Oil	139	MW
IPP Thermal Oil	133	MW
Mini Hydro (Telemetered)	205	MW
IPP Wind	77.2	MW
CEB Wind	89.4	MW
Biomass/ Solid Waste	7	MW

### Recorded Peak Demand Data

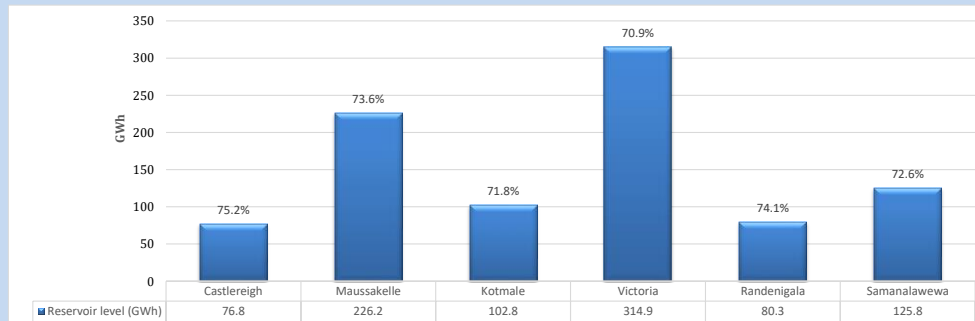
Table 07

Night Peak*	2,345	MW
Day Peak Maximum Demand	2,066	MW
Day Peak Minimum Demand	1,603	MW
Off Peak Minimum Demand	1,318	MW

Above figures are excluding contribution from roof top solar, non telemetered solar and mini hydro plants

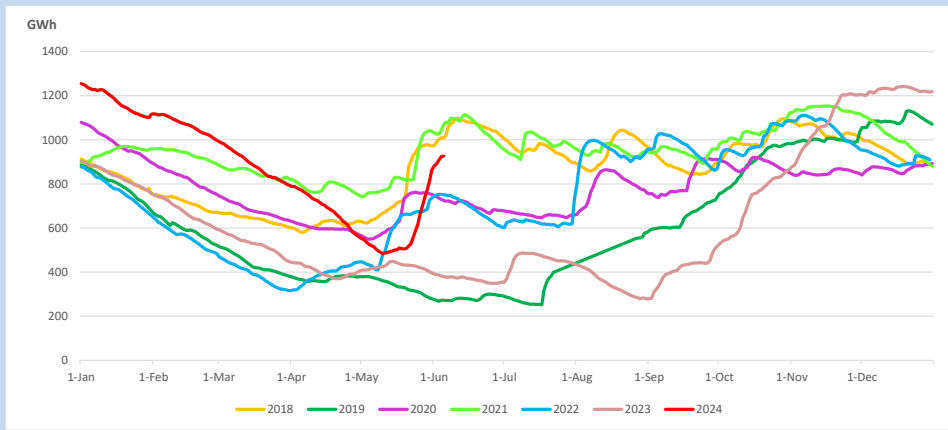
### Reservoir Levels -

as at 06.00 Hr on June 5, 2024

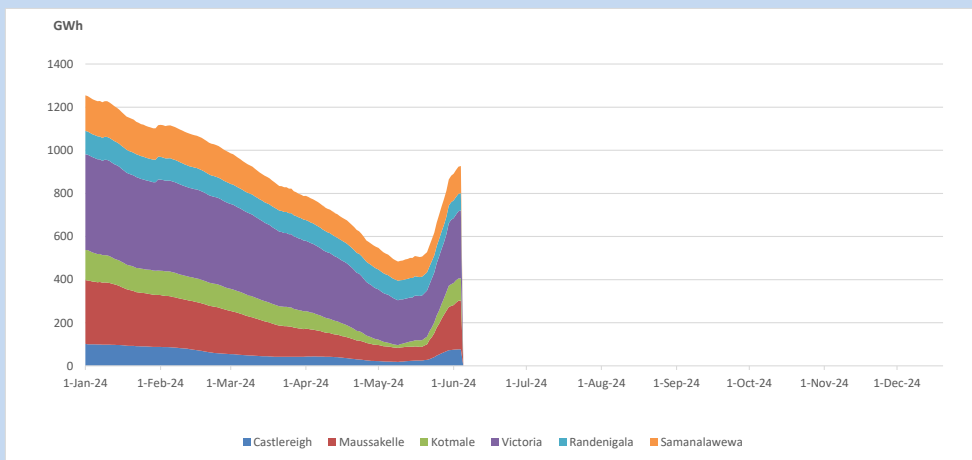


Total Reservoir Level 926.8 GWh  
% of Total capacity 72.5%

### 11. Comparison of Total Reservoir Storage Levels with Past Years

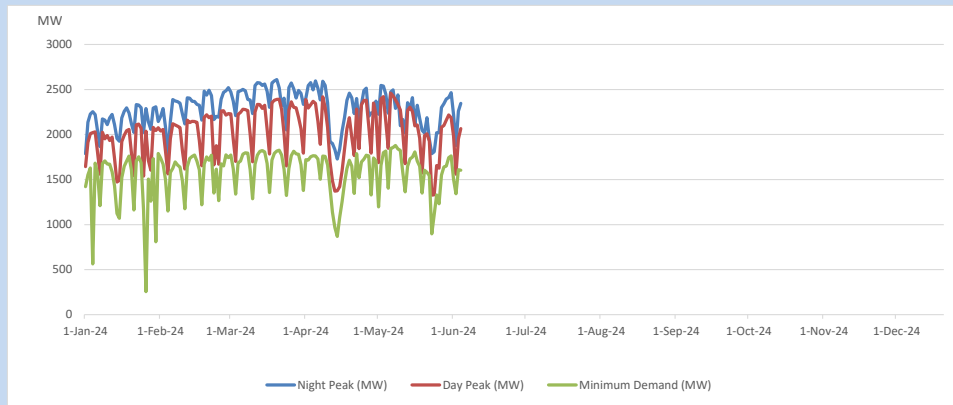


### 12. Variation of Major Hydro Reservoir Levels in the current year (GWh)





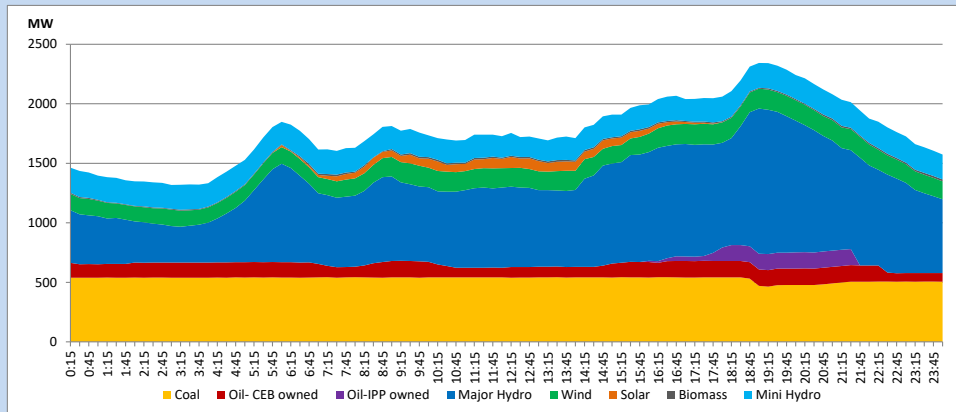
### 13. Variation of Demand during the current year



The above figures are excluding contribution from roof top solar, non telemetered solar and mini hydro plants

### 14. Daily Load Curve

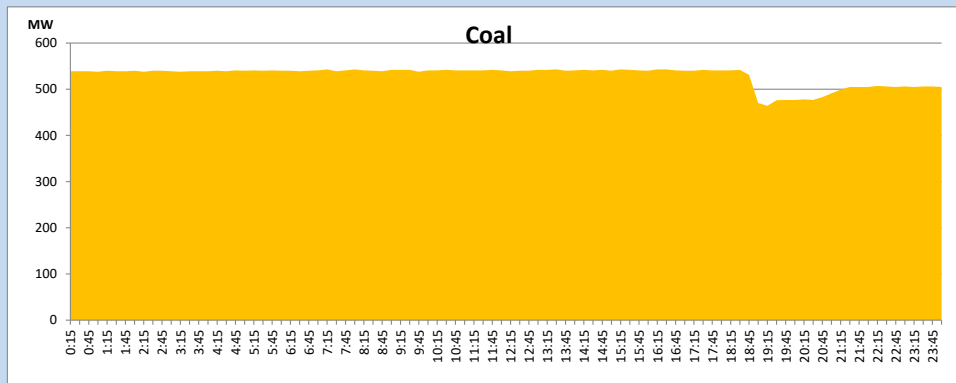
June 4, 2024



Solar and wind data is based on Telemetered Power Stations only

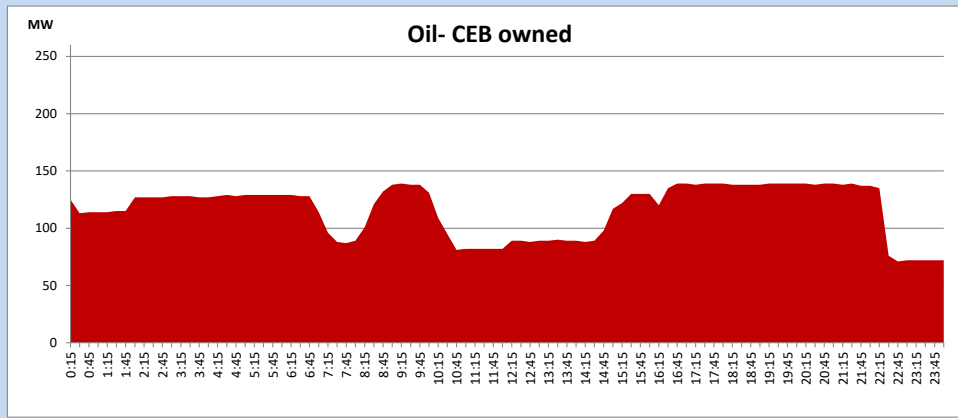
### Coal Generation during

June 4, 2024



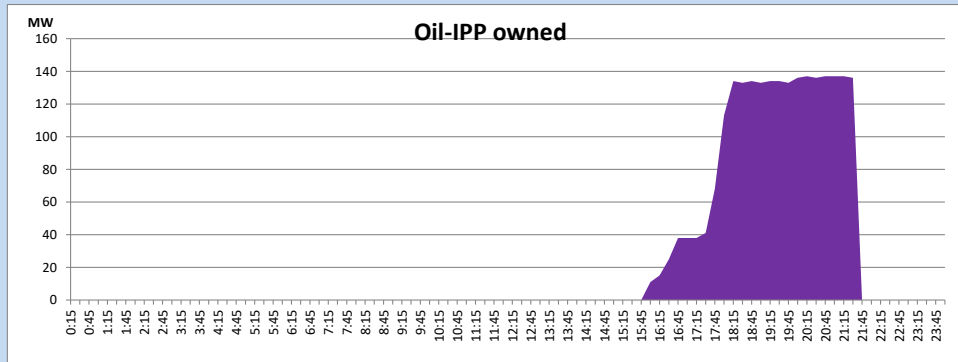
CEB Oil Plant Generation during

June 4, 2024



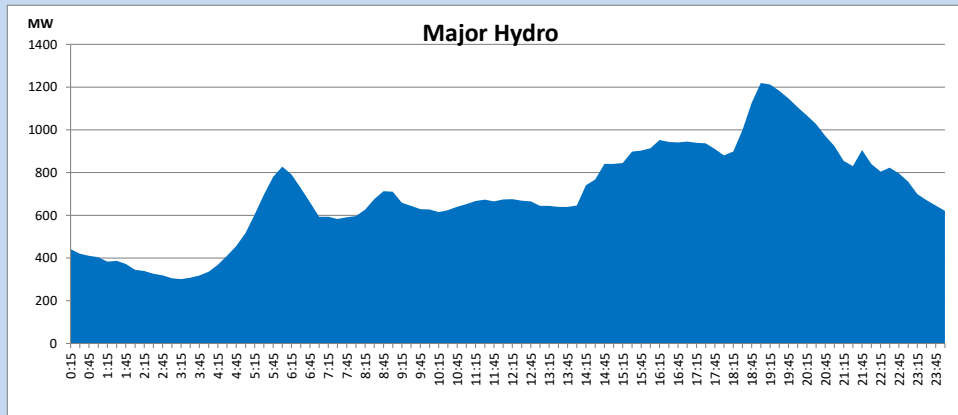
IPP Oil Plant Generation during

June 4, 2024



Major Hydro Generation during

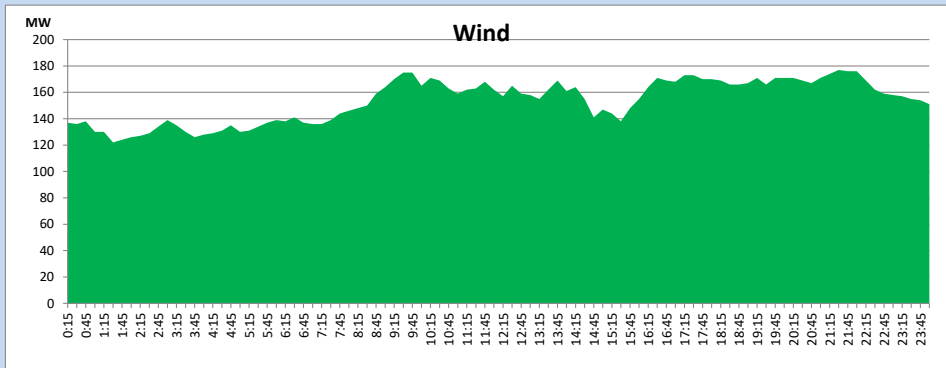
June 4, 2024



## Wind Generation during

June 4, 2024

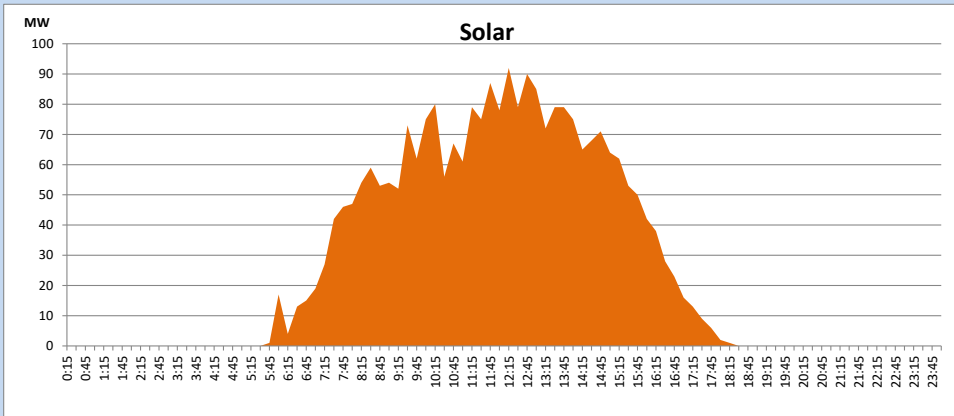
Based on Telemetered Power Stations only



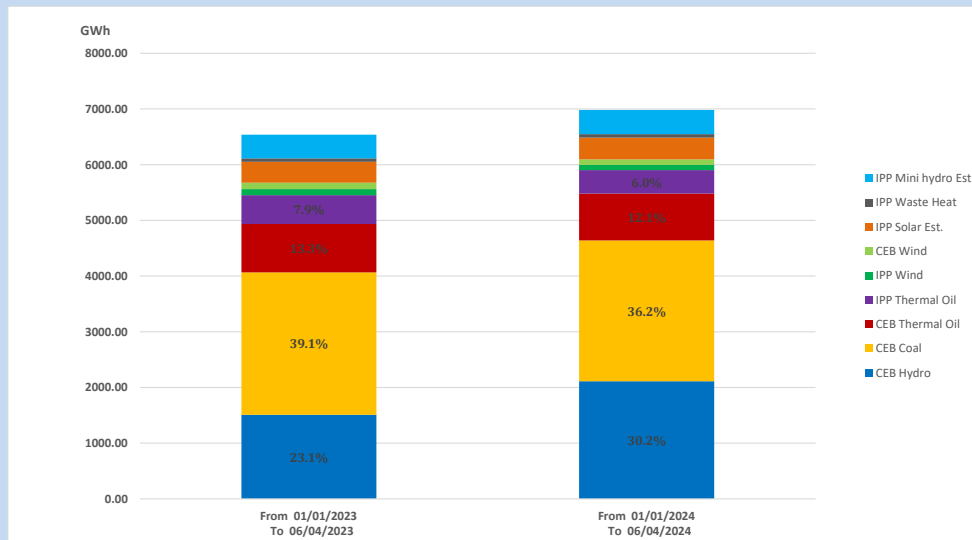
## Solar Generation during

June 4, 2024

Based on Telemetered Power Stations only



## 15. Cumulative Dispatch Comparison with Last Year



Cumulative dispatch  
 From 01/01/2023 To 06/04/2023  
 From 01/01/2024 To 06/04/2024

6540 GWh  
 6982 GWh

The above figures are including contribution from roof top solar, non telemetered solar and mini hydro plants)  
 Unused energy due to power cuts has been excluded in 2023

Thermal Plant Fuel types

Table 08

Power Station	Primary Fuel
CEB Thermal	
Sapugaskanda 1	Heavy Fuel
Sapugaskanda 2	Heavy Fuel
Kelanitissa Small Gas Turbines	Auto Diesel
GT 7 - Kelanitissa	Auto Diesel
Kelanitissa CCY	Naphtha or Diesel
Lakvijaya 1	Coal
Lakvijaya 2	Coal
Lakvijaya 3	Coal
Uthuru Janani	Heavy Fuel
Barge CEB	Heavy Fuel
KCCPS -2	Auto Diesel

Power Station	Primary Fuel
Private Thermal	
West Coast	Auto Diesel / Heavy Fuel
Sobadhanavi	Auto Diesel

Major Incidents reported during the day

June 4, 2024

- 1) New Polpitiya - Padukka 220kV cct 01 tripped and A/R from both ends at 15:16hrs due to the operation of distance protection.
- 2) LVPS Unit 03 reached 196MW(net) at 19:01hrs due to an issue of the seawater intake's travelling screen. The unit is yet to reach full load.
- 3) WCP GT1 and ST tripped at 21:36hrs due to the exhaust thermocouple failure, rejecting 125MW from the system.
- 4) Kukule unit 02 automatically deloaded and stopped at 22:34hrs due to low penstock pressure. Kukule unit 02 resumed generation at 22:52hrs
- 5) Kukule Ganga pond spilling continues to the present hour.