

Generation and Reservoirs Statistics

June 3, 2024



PUBLIC UTILITIES COMMISSION OF SRI LANKA

1. Daily Generation Mix in MWh

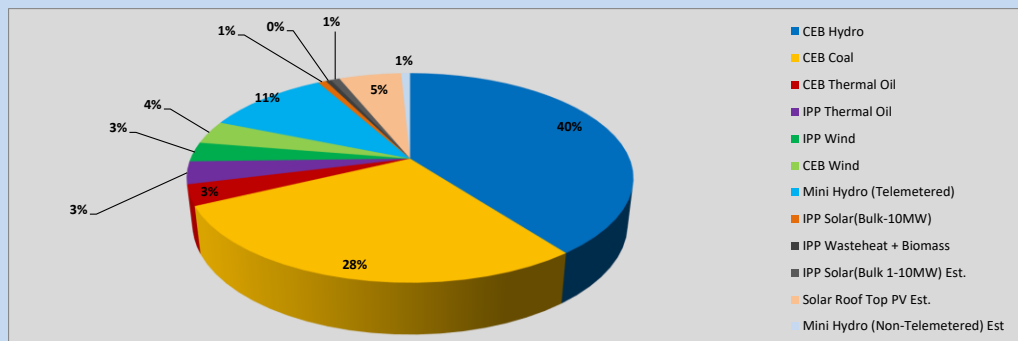


Table 01

	Generation (MWh)
CEB Hydro	17,070
CEB Coal	12,157
CEB Thermal Oil	1,372
IPP Thermal Oil	1,499
IPP Wind	1,297
CEB Wind	1,555
Mini Hydro (Telemetered)	4,610
IPP Solar (Bulk)	298
IPP Waste heat + Biomass	202
Total Generation (Excluding estimated figures)	40,060
* Estimated unserved energy	0
* Estimated Mini Hydro (Non telemetered)	333
* Estimated IPP Solar PV (Bulk 1-10MW)	332
* Estimated Solar Roof Top PV	2320
Total Generation (Including estimated figures)	43,045

* Estimated figures of CEB generation report

Table 02

	Installed Capacity (MW)
CEB Hydro	1530
CEB Coal	810
CEB Thermal Oil	773.1
IPP Thermal Oil (West Coast)	490
IPP Wind	148
CEB Wind	100
Mini Hydro	416
IPP Waste heat + Biomass	50
IPP Solar	110
Rooftop Solar (Ordinary)	250
Rooftop Solar (LT Bulk)	234
Rooftop Solar (HT Bulk)	56

Data Source - Monthly Review Report [Jan-2024]

2. Cumulative Dispatch

Following data excludes the contribution from roof top solar, non telemetered solar and mini hydro plants

Table 03 - Current Month

Category	Dispatch (GWh)	
CEB Hydro	54	43.05%
CEB Coal	37	29.59%
CEB Thermal Oil	4	3.04%
IPP Thermal	2	1.44%
SPP Wind	3	2.21%
CEB Wind	4	3.04%
Mini Hydro *	13	10.35%
IPP Solar *	9	6.79%
IPP Waste heat + BMP	1	0.48%
Total	125	

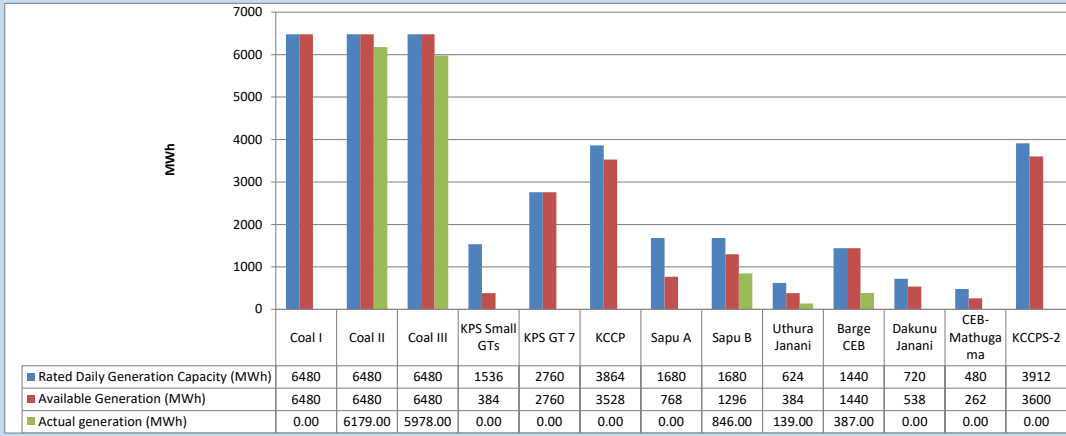
Table 04 - Current Year

Category	Dispatch (GWh)	
CEB Hydro	2,094	30.19%
CEB Coal	2,516	36.28%
CEB Thermal Oil	839	12.09%
IPP Thermal	420	6.05%
SPP Wind	90	1.30%
CEB Wind	98	1.41%
Mini Hydro *	429	6.18%
IPP Solar *	389	5.61%
IPP Waste heat	61	0.87%
Total	6,936	

*Including estimated contribution from non telemetered plants

3. CEB owned Thermal Plant Dispatch

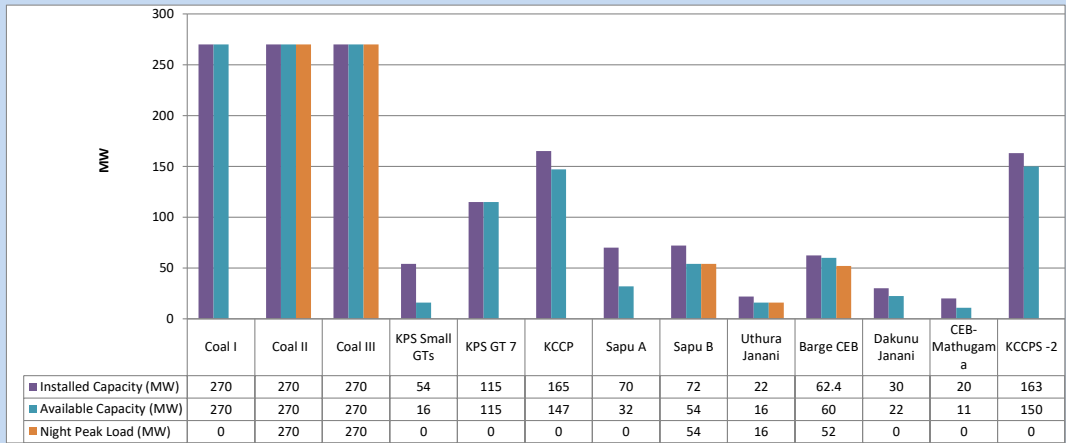
June 3, 2024



Available Generation is estimated based on plant availability at 6.00am on

June 4, 2024

4. CEB owned Thermal Plant Loading at the Night Peak

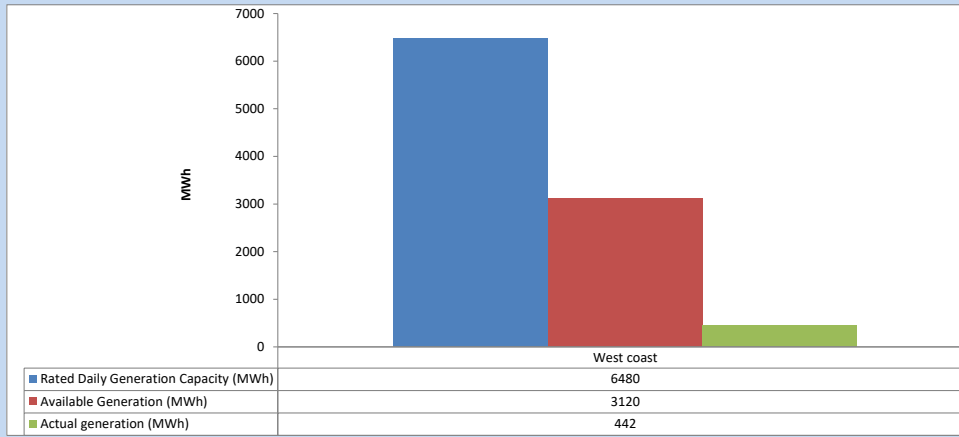


Plant availability is recorded at 6.00 am on

June 4, 2024

5. IPP owned Thermal Plant Dispatch

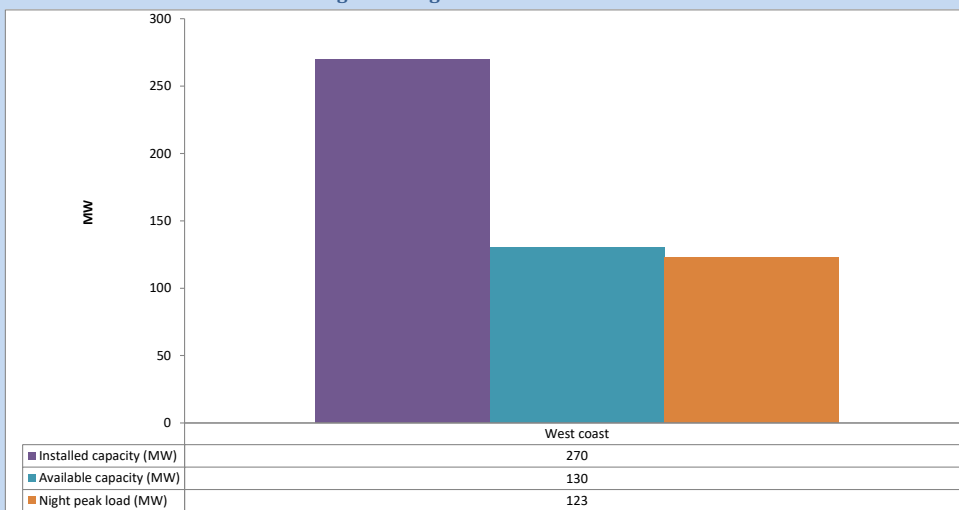
June 3, 2024



Available Generation is estimated based on plant availability at 6.00am on

June 4, 2024

6. IPP owned Thermal Plant Loading at the Night Peak

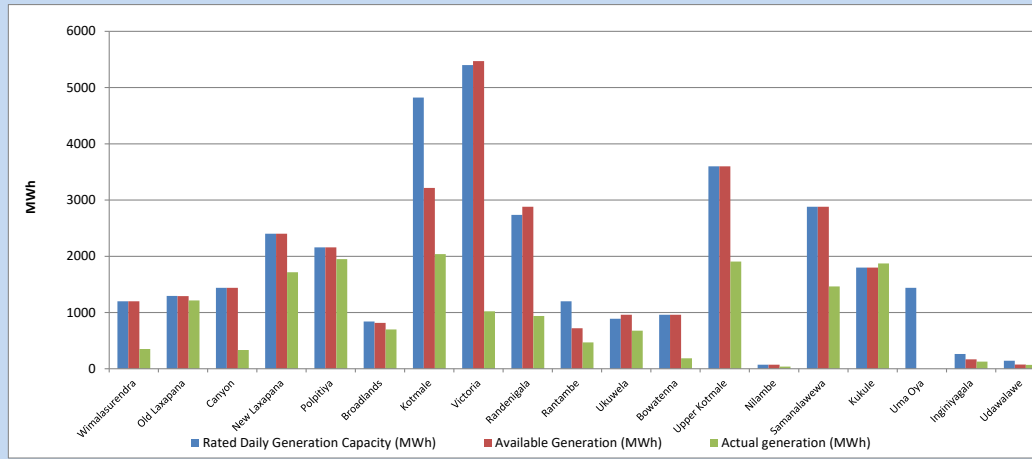


Plant availability is recorded at 6.00 am on

June 4, 2024

7. Major Hydro Plant Dispatch

June 3, 2024

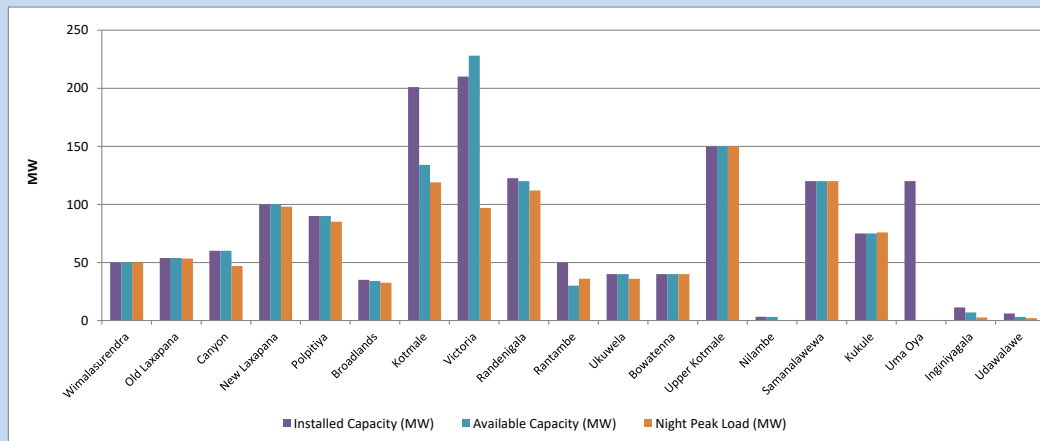


Available Generation is estimated based on plant availability at 6.00am on
Broadlands power plant is operating in the Commissioning Stage

June 4, 2024

8. Major Hydro Plant Loading at Night Peak

June 3, 2024



Plant availability is recorded at 6.00 am on
Broadlands power plant is operating in the Commissioning Stage

June 4, 2024

9. Summary of Major Plant performance

Table 05

Plant	Maximum Available Total Capacity	Plant Availability	Night peak Load	Plant Dispatch
	(MW)	(MW)	(MW)	(MWh)
Wimalasurendra	50	50	50	352
Old Laxapana	54	54	53	1,216
Canyon	60	60	47	332
New Laxapana	100	100	98	1,715
Polpitiya	90	90	85	1,950
Broadlands	35	34	33	698
Kotmale	201	134	119	2,040
Victoria	210	228	97	1,022
Randenigala	123	120	112	938
Rantambe	50	30	36	467
Ukuwela	40	40	36	678
Bowatenna	40	40	40	187
Upper Kotmale	150	150	150	1,905
Nilambe	3	3	0	37
Samanalawewa	120	120	120	1,465
Kukule	75	75	76	1,874
Uma Oya (Testing)	120	0	0	0
Inginiyagala	11	7	3	126
Udawalawe	6	3	2	69
Puttalam Coal I	270	270	0	0
Puttalam Coal II	270	270	270	6,179
Puttalam Coal III	270	270	270	5,978
KPS Small GTs	54	16	0	0
KPS GT 7	115	115	0	0
KCCP	165	147	0	0
Sapugaskanda A	70	32	0	0
Sapugaskanda B	72	54	54	846
Uthura Janani	22	16	16	139
Barge CEB	62	60	52	387
CEB-Hambantota	30	22	0	0
CEB-Mathugama	20	11	0	0
ACE Matara	24	0	0	0
Asia Power	50	0	0	0
KCCPS -2	163	150	0	0
West Coast	270	130	123	442
Nothern Power	36	0	0	0
ACE Embilipitiya	93	0	0	0
Sobadhanavi	220	0	0	1,057
Total	3,594	2,901	2,256	40,061

Note-

Plant availability is the availability recorded at 6 am on
Installed Capacity is sourced from CEB Annual Report- 2022

June 4, 2024

10. Contribution to the Night Peak in MW

June 3, 2024

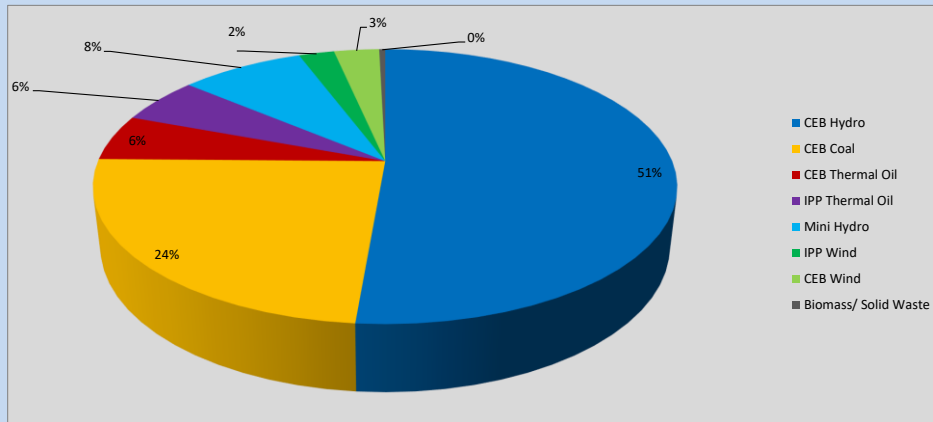


Table 06

CEB Hydro	1160	MW
CEB Coal	540	MW
CEB Thermal Oil	122	MW
IPP Thermal Oil	123	MW
Mini Hydro (Telemetered)	185	MW
IPP Wind	53	MW
CEB Wind	67.6	MW
Biomass/ Solid Waste	9	MW

Recorded Peak Demand Data

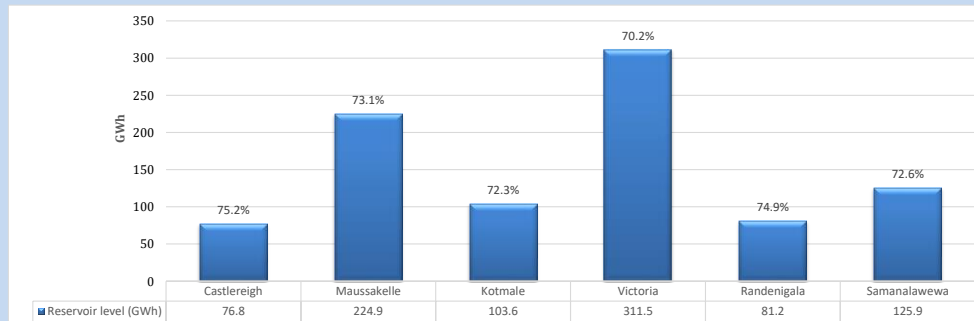
Table 07

Night Peak*	2,260	MW
Day Peak Maximum Demand	1,951	MW
Day Peak Minimum Demand	1,609	MW
Off Peak Minimum Demand	1,147	MW

Above figures are excluding contribution from roof top solar, non telemetered solar and mini hydro plants

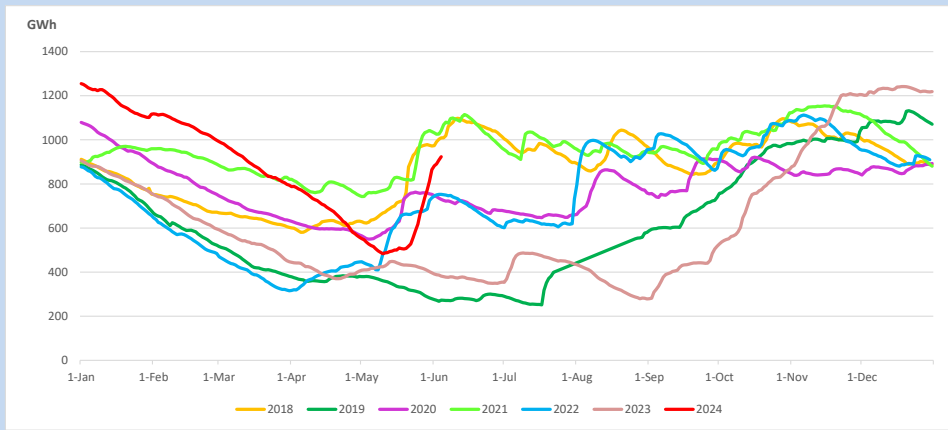
Reservoir Levels -

as at 06.00 Hr on June 4, 2024

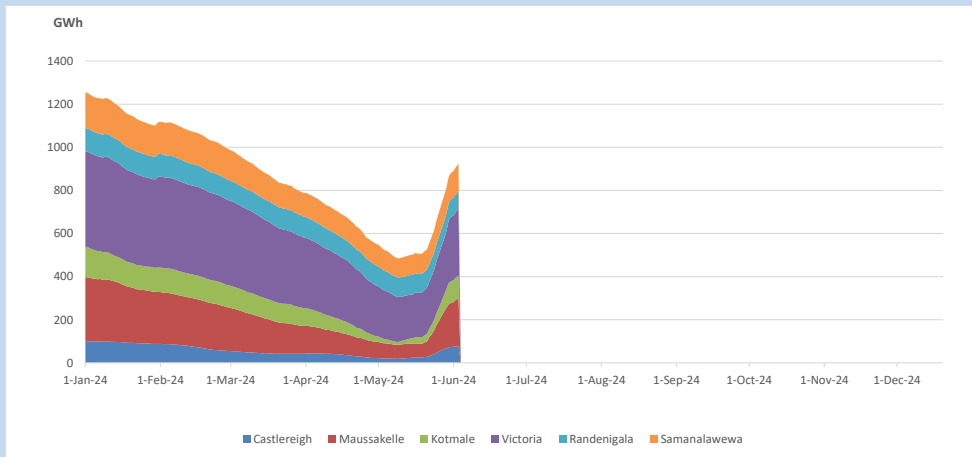


Total Reservoir Level 923.9 GWh
% of Total capacity 72.3%

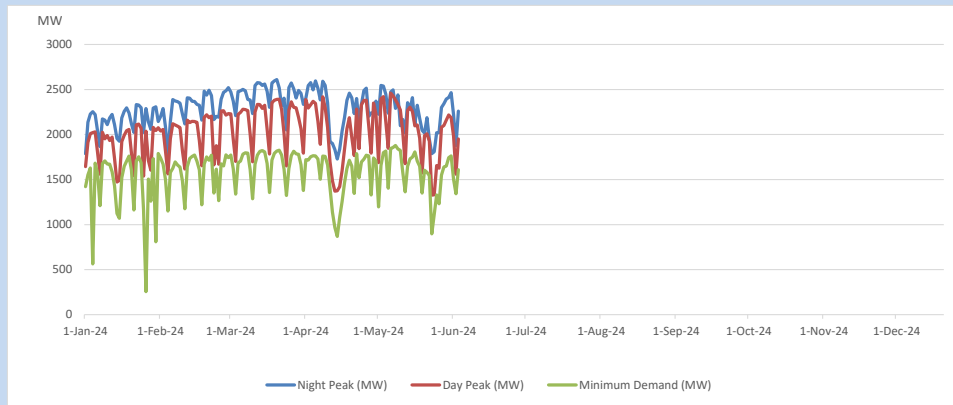
11. Comparison of Total Reservoir Storage Levels with Past Years



12. Variation of Major Hydro Reservoir Levels in the current year (GWh)



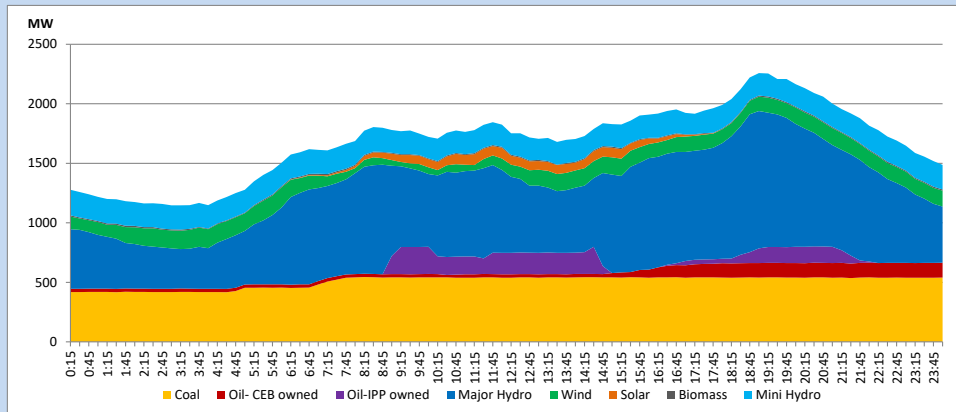
13. Variation of Demand during the current year



The above figures are excluding contribution from roof top solar, non telemetered solar and mini hydro plants

14. Daily Load Curve

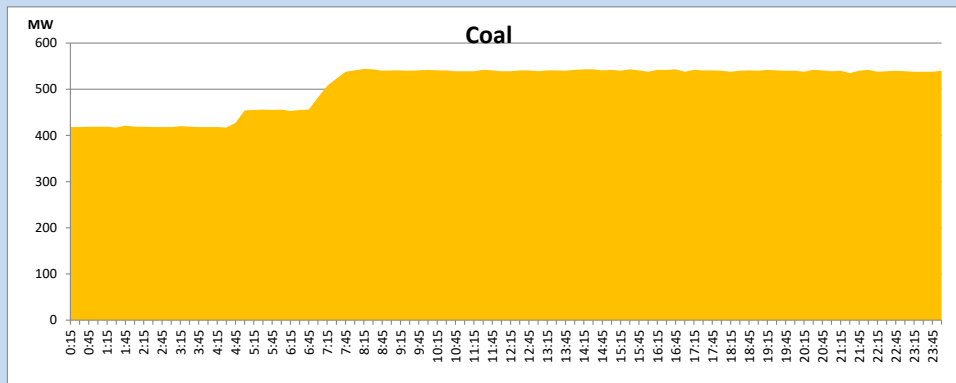
June 3, 2024



Solar and wind data is based on Telemetered Power Stations only

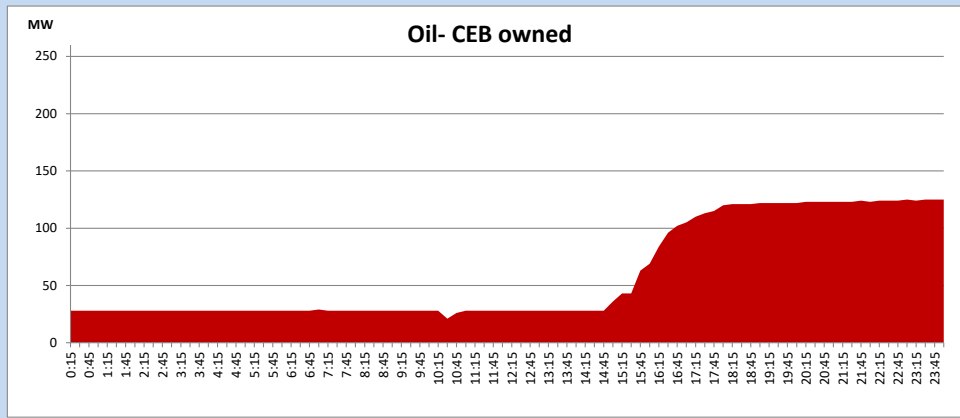
Coal Generation during

June 3, 2024



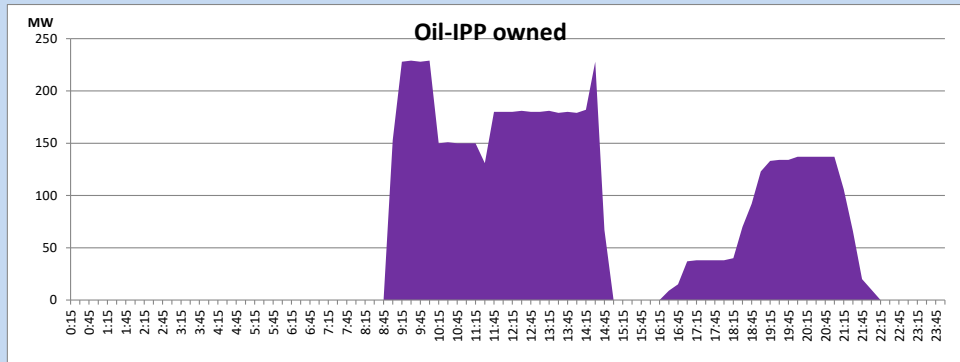
CEB Oil Plant Generation during

June 3, 2024



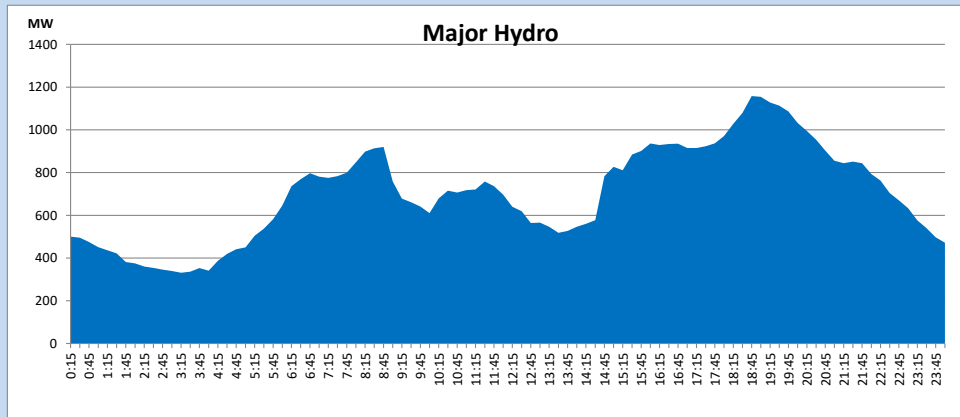
IPP Oil Plant Generation during

June 3, 2024



Major Hydro Generation during

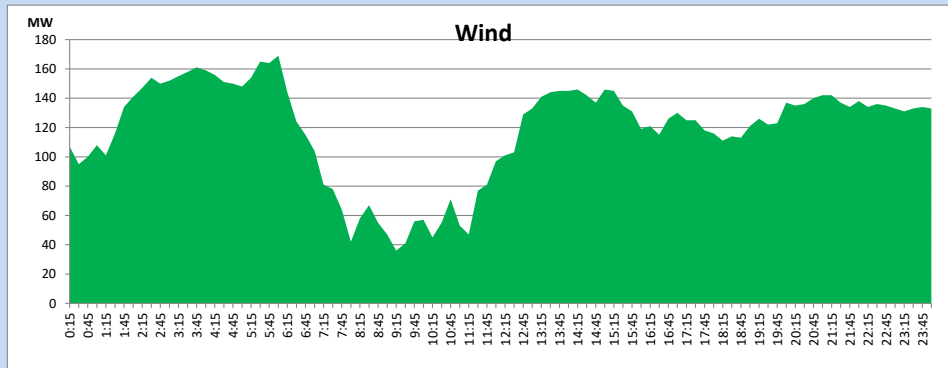
June 3, 2024



Wind Generation during

June 3, 2024

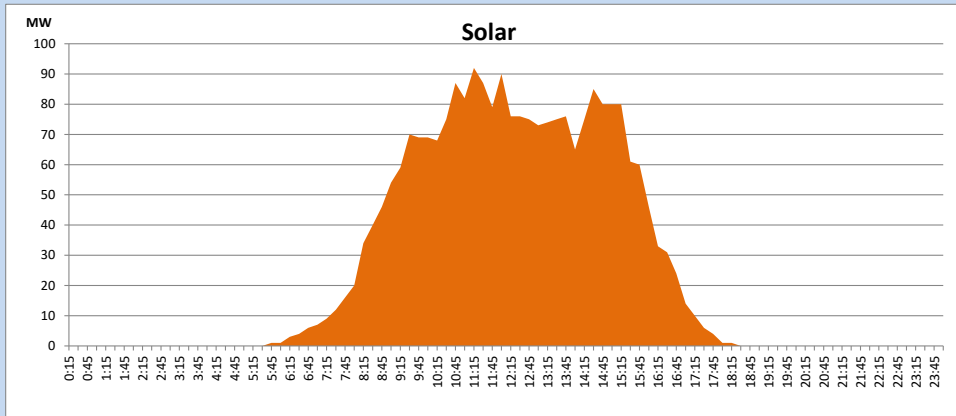
Based on Telemetered Power Stations only



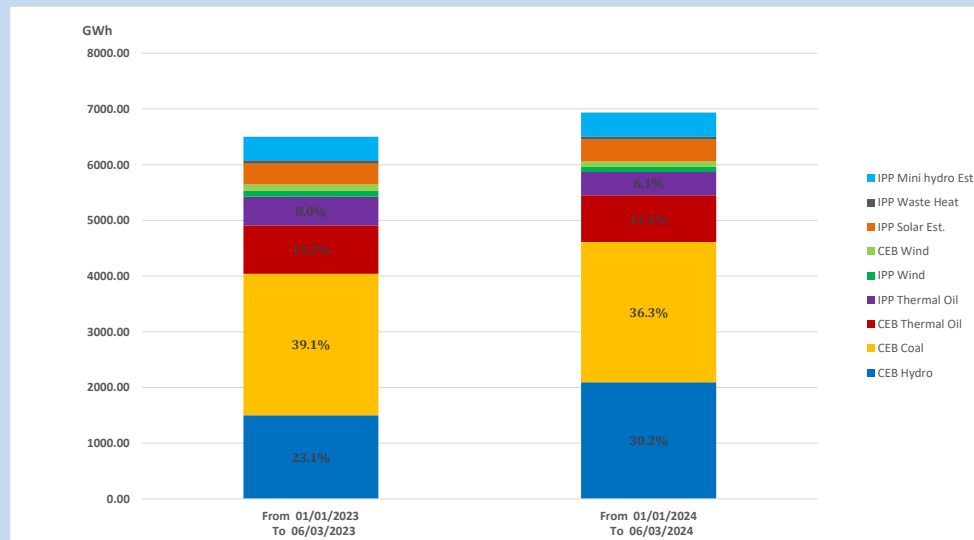
Solar Generation during

June 3, 2024

Based on Telemetered Power Stations only



15. Cumulative Dispatch Comparison with Last Year



Cumulative dispatch

From 01/01/2023 To 06/03/2023

6502 GWh

From 01/01/2024 To 06/03/2024

6936 GWh

The above figures are including contribution from roof top solar, non telemetered solar and mini hydro plants)

Unserviced energy due to power cuts has been excluded in 2023

Thermal Plant Fuel types

Table 08

Power Station	Primary Fuel
CEB Thermal	
Sapugaskanda 1	Heavy Fuel
Sapugaskanda 2	Heavy Fuel
Kelanitissa Small Gas Turbines	Auto Diesel
GT 7 - Kelanitissa	Auto Diesel
Kelanitissa CCY	Naphtha or Diesel
Lakvijaya 1	Coal
Lakvijaya 2	Coal
Lakvijaya 3	Coal
Uthuru Janani	Heavy Fuel
Barge CEB	Heavy Fuel
KCCPS -2	Auto Diesel

Power Station	Primary Fuel
Private Thermal	
West Coast	Auto Diesel / Heavy Fuel
Sobadhanavi	Auto Diesel

Major Incidents reported during the day

June 3, 2024

- 1).Kukule Ganga pond spilling continues to the present hour.
- 2) Beliatta - Embilipitiya 132kV cct tripped and A/R from both ends at 05:57hrs (04.06.2024) due to the operation of distance protection.