

Generation and Reservoirs Statistics

April 29, 2024



PUBLIC UTILITIES COMMISSION OF SRI LANKA

1. Daily Generation Mix in MWh

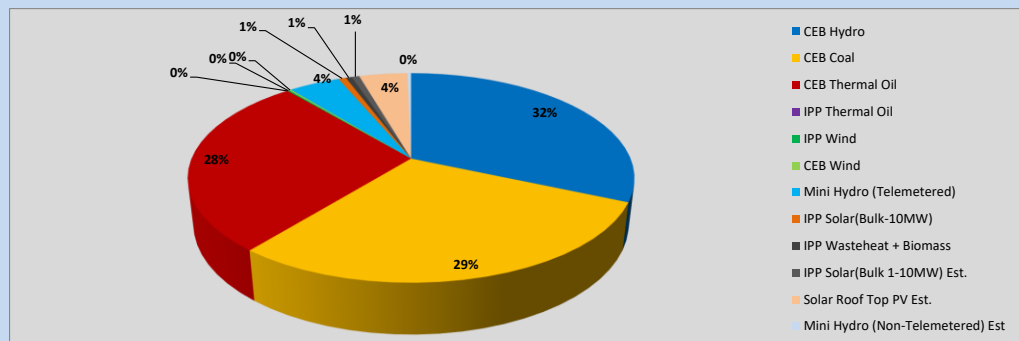


Table 01

	Generation (MWh)
CEB Hydro	15,704
CEB Coal	14,574
CEB Thermal Oil	13,955
IPP Thermal Oil	-
IPP Wind	86
CEB Wind	88
Mini Hydro (Telemetered)	2,212
IPP Solar (Bulk)	332
IPP Waste heat + Biomass	248
Total Generation (Excluding estimated figures)	47,199
* Estimated unserved energy	0
* Estimated Mini Hydro (Non telemetered)	160
* Estimated IPP Solar PV (Bulk 1-10MW)	338
* Estimated Solar Roof Top PV	2080
Total Generation (Including estimated figures)	49,777

* Estimated figures of CEB generation report

Table 02

	Installed Capacity (MW)
CEB Hydro	1644
CEB Coal	810
CEB Thermal Oil	773.1
IPP Thermal Oil (West Coast)	270
IPP Wind	163
CEB Wind	100
Mini Hydro	422
IPP Waste heat + Biomass	54
IPP Solar	137
Rooftop Solar (Ordinary)	293
Rooftop Solar (LT Bulk)	272
Rooftop Solar (HT Bulk)	74

Data Source - Monthly Review Report [Nov-2023]

2. Cumulative Dispatch

Following data excludes the contribution from roof top solar, non telemetered solar and mini hydro plants

Table 03 - Current Month

Category	Dispatch (GWh)	
CEB Hydro	368	28.08%
CEB Coal	467	35.69%
CEB Thermal Oil	236	18.02%
IPP Thermal	76	5.84%
SPP Wind	8	0.62%
CEB Wind	8	0.61%
Mini Hydro *	53	4.05%
IPP Solar *	82	6.24%
IPP Waste heat + BMP	11	0.86%
Total	1,309	

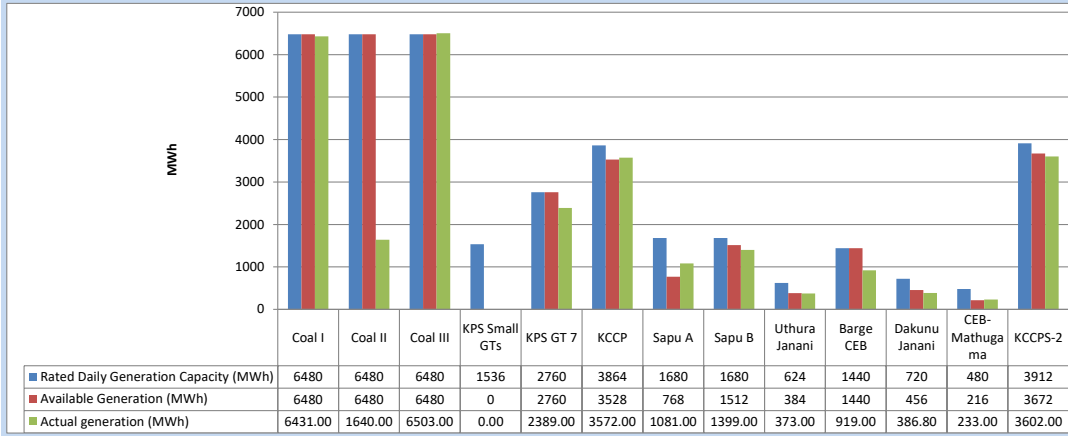
Table 04 - Current Year

Category	Dispatch (GWh)	
CEB Hydro	1,629	30.38%
CEB Coal	1,941	36.20%
CEB Thermal Oil	615	11.46%
IPP Thermal	408	7.60%
SPP Wind	57	1.07%
CEB Wind	63	1.17%
Mini Hydro *	308	5.74%
IPP Solar *	293	5.47%
IPP Waste heat	49	0.91%
Total	5,363	

*Including estimated contribution from non telemetered plants

3. CEB owned Thermal Plant Dispatch

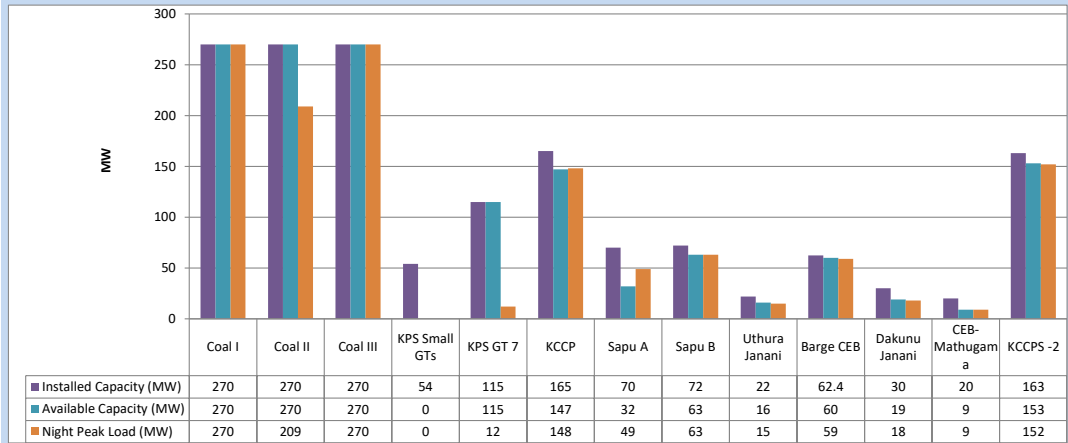
April 29, 2024



Available Generation is estimated based on plant availability at 6.00am on

April 30, 2024

4. CEB owned Thermal Plant Loading at the Night Peak

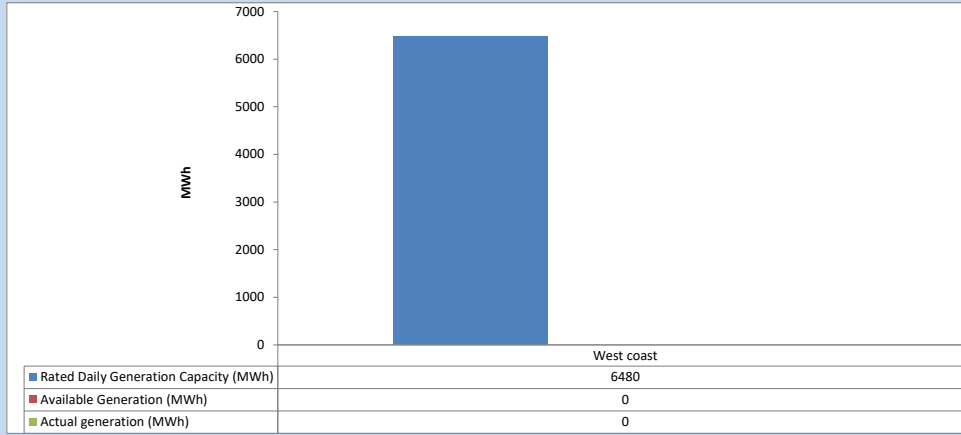


Plant availability is recorded at 6.00 am on

April 30, 2024

5. IPP owned Thermal Plant Dispatch

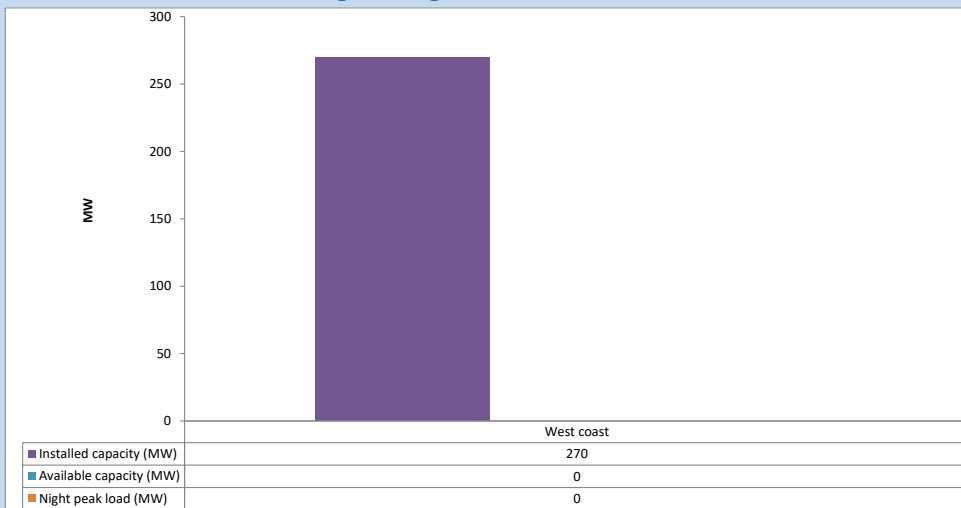
April 29, 2024



Available Generation is estimated based on plant availability at 6.00am on

April 30, 2024

6. IPP owned Thermal Plant Loading at the Night Peak

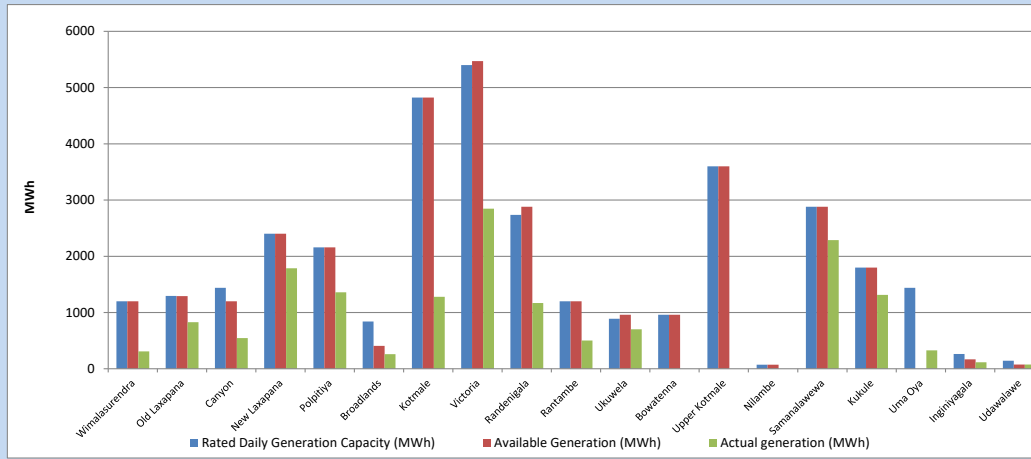


Plant availability is recorded at 6.00 am on

April 30, 2024

7. Major Hydro Plant Dispatch

April 29, 2024

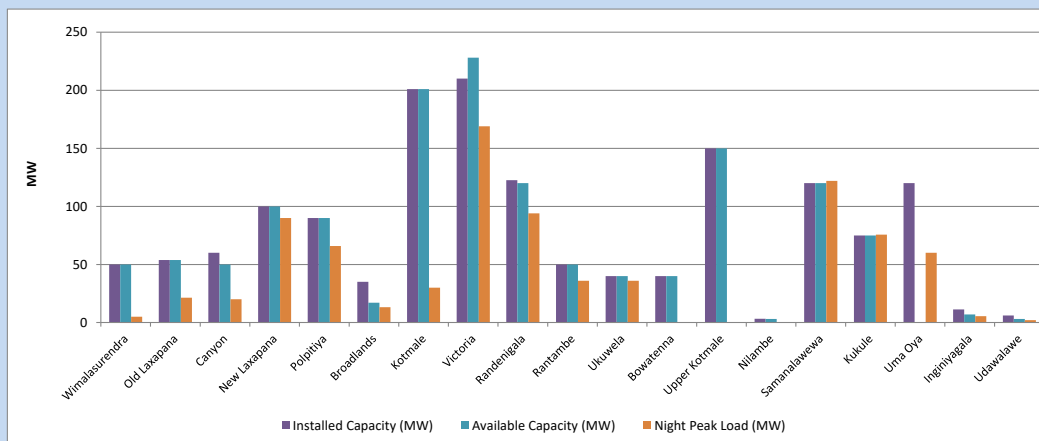


Available Generation is estimated based on plant availability at 6.00am on
Broadlands power plant is operating in the Commissioning Stage

April 30, 2024

8. Major Hydro Plant Loading at Night Peak

April 29, 2024



Plant availability is recorded at 6.00 am on
Broadlands power plant is operating in the Commissioning Stage

April 30, 2024

9. Summary of Major Plant performance

Table 05

Plant	Maximum Available Total Capacity	Plant Availability	Night peak Load	Plant Dispatch
	(MW)	(MW)	(MW)	(MWh)
Wimalasurendra	50	50	5	310
Old Laxapana	54	54	21	827
Canyon	60	50	20	546
New Laxapana	100	100	90	1,788
Polpitiya	90	90	66	1,360
Broadlands	35	17	13	261
Kotmale	201	201	30	1,280
Victoria	210	228	169	2,846
Randenigala	123	120	94	1,169
Rantambe	50	50	36	501
Ukuwela	40	40	36	702
Bowatenna	40	40	0	0
Upper Kotmale	150	150	0	0
Nilambe	3	3	0	0
Samanalawewa	120	120	122	2,287
Kukule	75	75	76	1,312
Uma Oya (Testing)	120	0	60	326
Inginiyagala	11	7	5	116
Udawalawe	6	3	2	74
Puttalam Coal I	270	270	270	6,431
Puttalam Coal II	270	270	209	1,640
Puttalam Coal III	270	270	270	6,503
KPS Small GTs	54	0	0	0
KPS GT 7	115	115	12	2,389
KCCP	165	147	148	3,572
Sapugaskanda A	70	32	49	1,081
Sapugaskanda B	72	63	63	1,399
Uthura Janani	22	16	15	373
Barge CEB	62	60	59	919
CEB-Hambantota	30	19	18	387
CEB-Mathugama	20	9	9	233
ACE Matara	24	0	0	0
Asia Power	50	0	0	0
KCCPS -2	163	153	152	3,602
West Coast	270	0	0	0
Nothern Power	36	0	0	0
ACE Embilipitiya	93	0	0	0
Total	3,594	2,822	2,238	47,200

Note-

Plant availability is the availability recorded at 6 am on

April 30, 2024

Installed Capacity is sourced from CEB Annual Report- 2022

10. Contribution to the Night Peak in MW

April 29, 2024

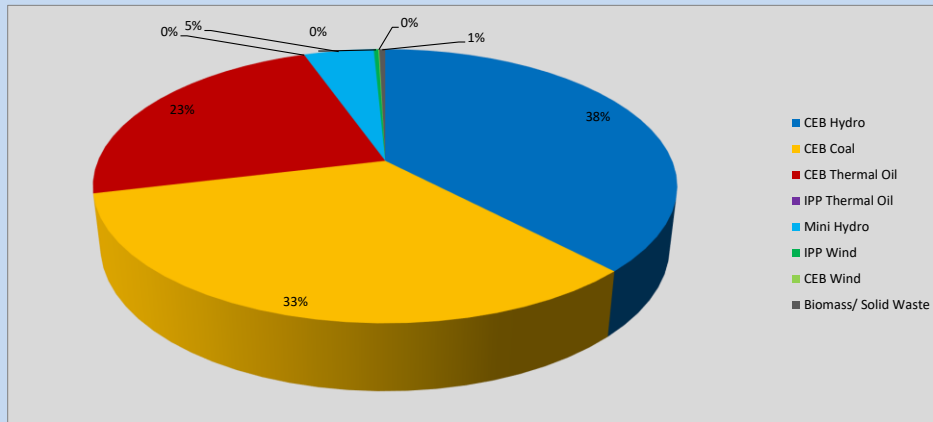


Table 06

CEB Hydro	850	MW
CEB Coal	749	MW
CEB Thermal Oil	525	MW
IPP Thermal Oil	0	MW
Mini Hydro (Telemetered)	104	MW
IPP Wind	6.9	MW
CEB Wind	-1.2	MW
Biomass/ Solid Waste	9	MW

Recorded Peak Demand Data

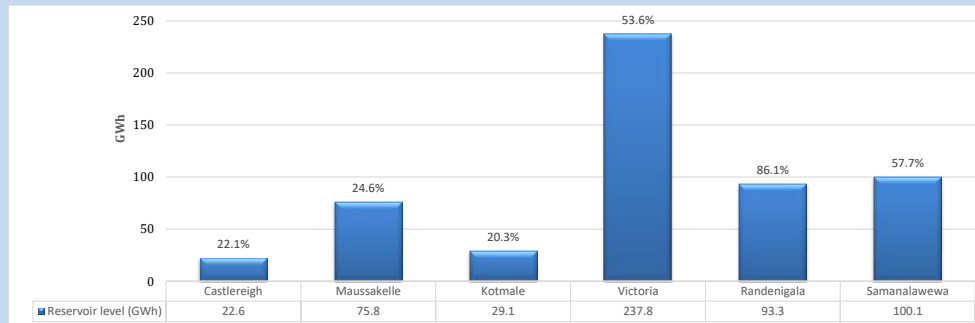
Table 07

Night Peak*	2,243	MW
Day Peak Maximum Demand	2,349	MW
Day Peak Minimum Demand	1,740	MW
Off Peak Minimum Demand	1,527	MW

Above figures are excluding contribution from roof top solar, non telemetered solar and mini hydro plants

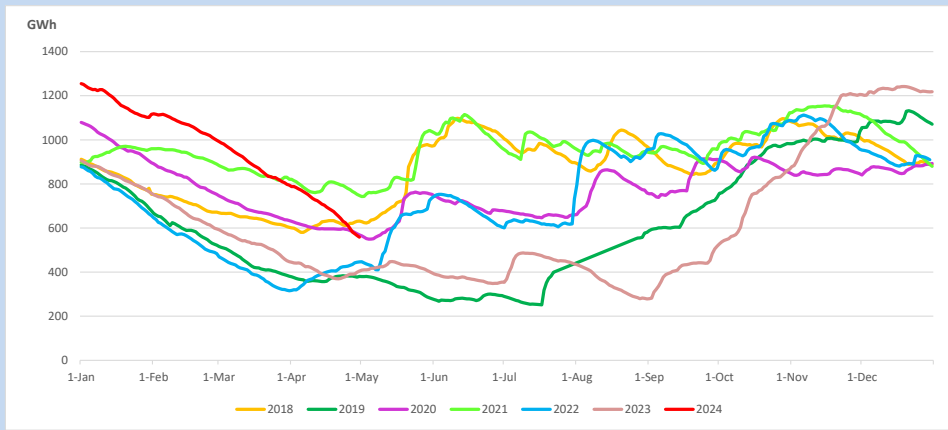
Reservoir Levels -

as at 06.00 Hr on April 30, 2024

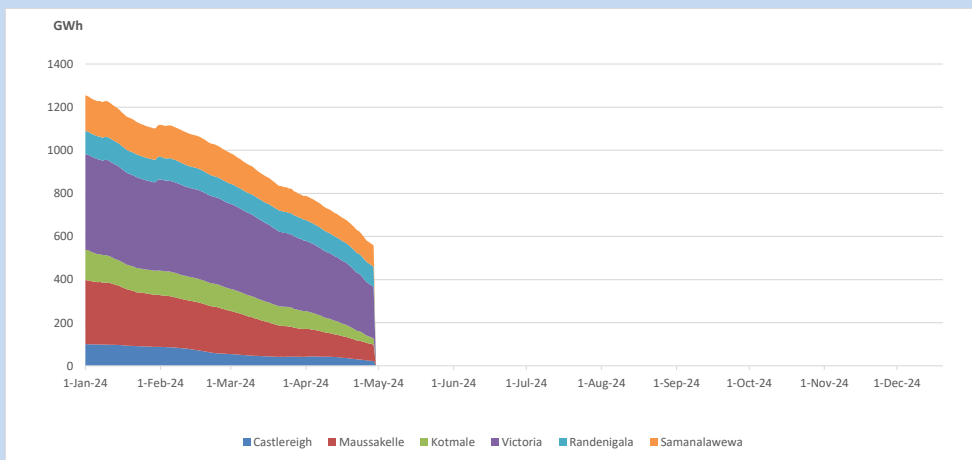


Total Reservoir Level: 558.7 GWh
 % of Total capacity: 43.7%

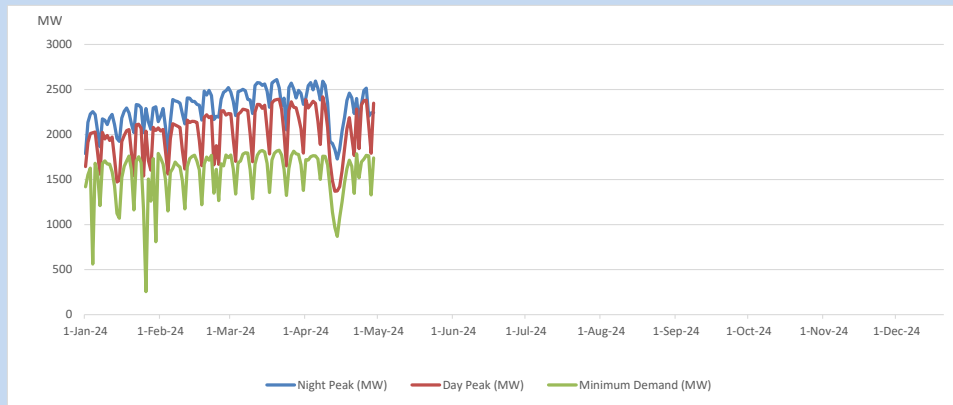
11. Comparison of Total Reservoir Storage Levels with Past Years



12. Variation of Major Hydro Reservoir Levels in the current year (GWh)



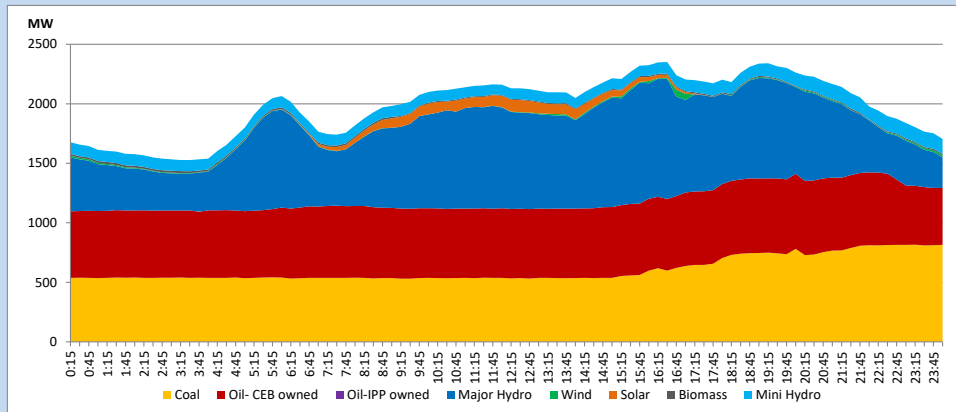
13. Variation of Demand during the current year



The above figures are excluding contribution from roof top solar, non telemetered solar and mini hydro plants

14. Daily Load Curve

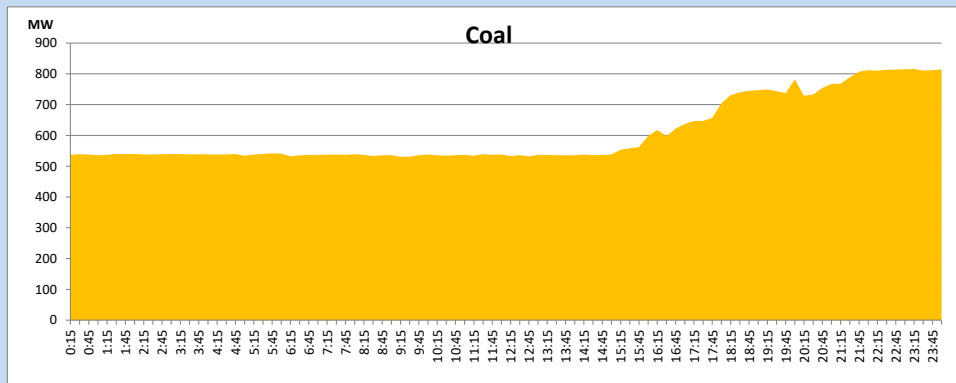
April 29, 2024



Solar and wind data is based on Telemetered Power Stations only

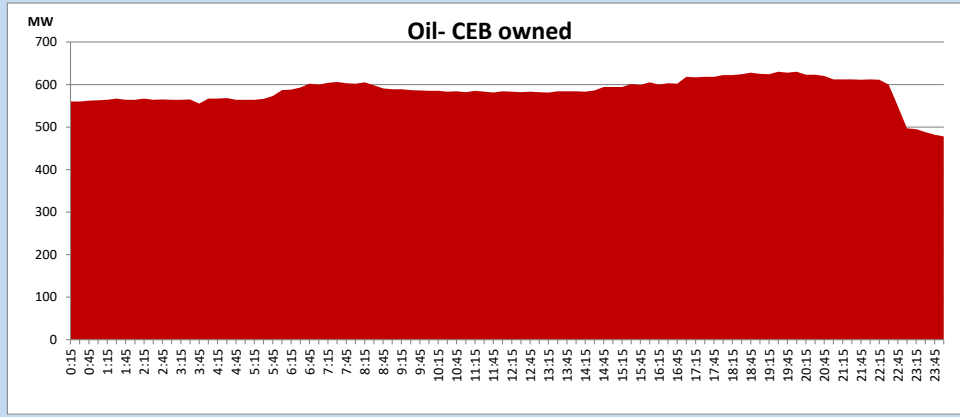
Coal Generation during

April 29, 2024



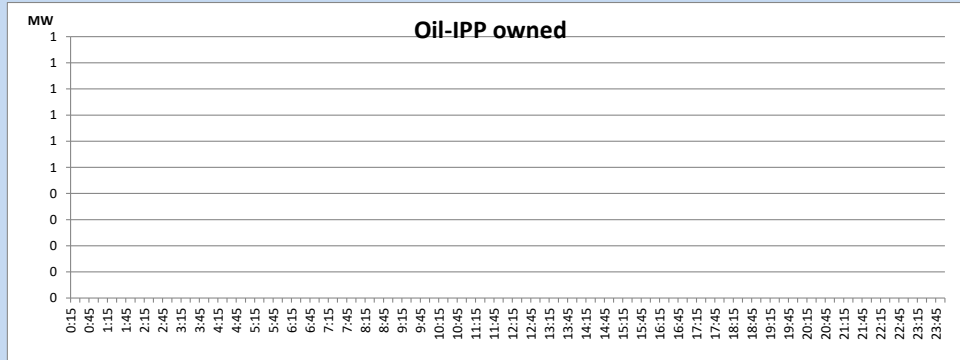
CEB Oil Plant Generation during

April 29, 2024



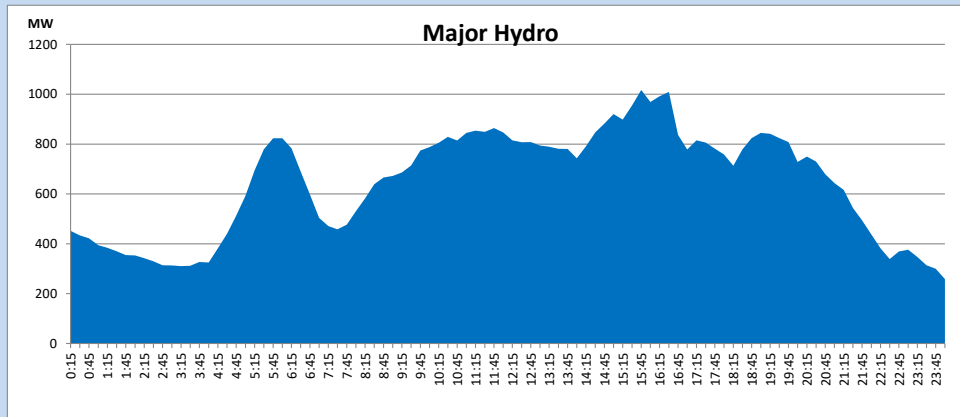
IPP Oil Plant Generation during

April 29, 2024



Major Hydro Generation during

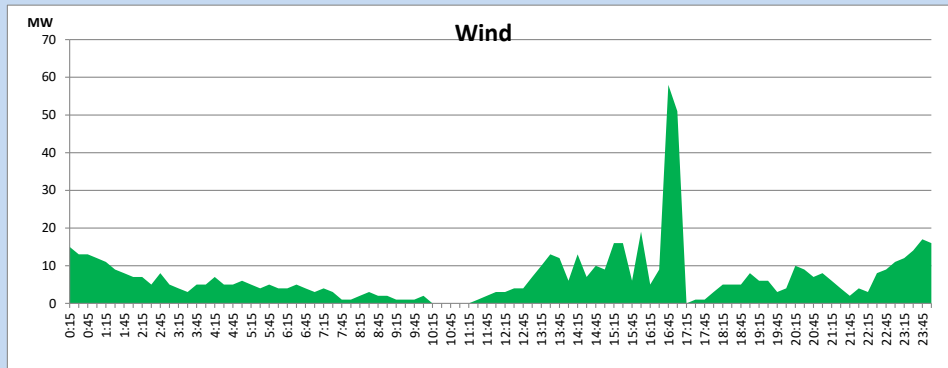
April 29, 2024



Wind Generation during

April 29, 2024

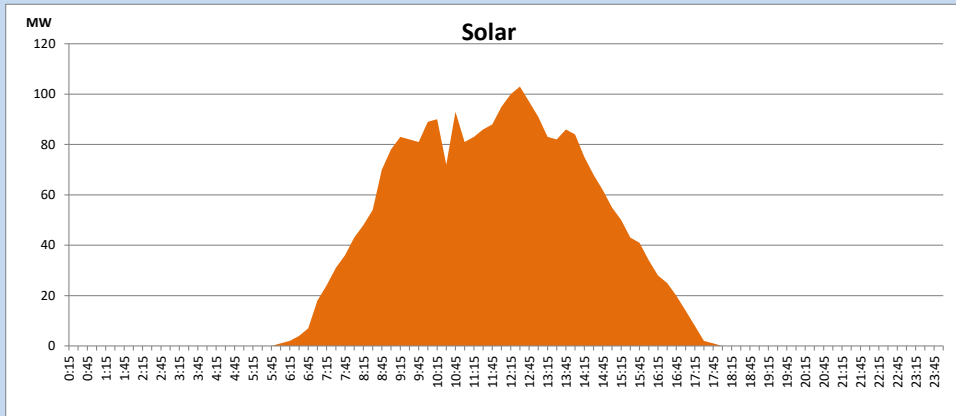
Based on Telemetered Power Stations only



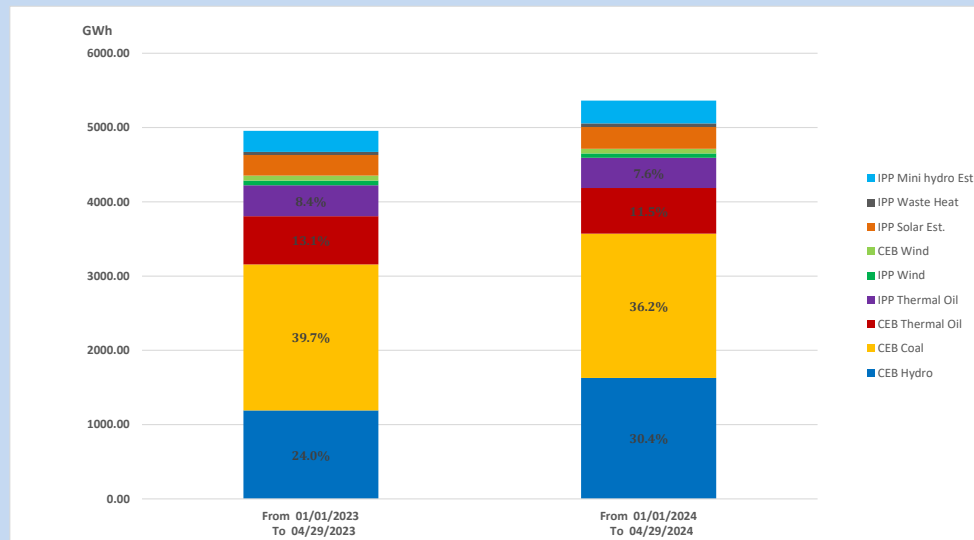
Solar Generation during

April 29, 2024

Based on Telemetered Power Stations only



15. Cumulative Dispatch Comparison with Last Year



Cumulative dispatch

From 01/01/2023 To 04/29/2023

4955 GWh

From 01/01/2024 To 04/29/2024

5363 GWh

The above figures are including contribution from roof top solar, non telemetered solar and mini hydro plants)

Unserviced energy due to power cuts has been excluded in 2023

Thermal Plant Fuel types

Table 08

Power Station	Primary Fuel
CEB Thermal	
Sapugaskanda 1	Heavy Fuel
Sapugaskanda 2	Heavy Fuel
Kelanitissa Small Gas Turbines	Auto Diesel
GT 7 - Kelanitissa	Auto Diesel
Kelanitissa CCY	Naphtha or Diesel
Lakvijaya 1	Coal
Lakvijaya 2	Coal
Lakvijaya 3	Coal
Uthuru Janani	Heavy Fuel
Barge CEB	Heavy Fuel
KCCPS -2	Auto Diesel

Power Station	Primary Fuel
Private Thermal	
West Coast	Auto Diesel / Heavy Fuel

Major Incidents reported during the day

April 29, 2024

- 1) LVPS unit 02 which made a forced shutdown on 21.04.2024, resumed generation at 15:13hrs and reached full load at 21:46hrs.
- 2) Athurugiriya - New Polpitiya - Thulhiriya 132kV cct tripped & AR from all ends at 16:40hrs and 16:43hrs due to the operation of distance protection.
Also, Athurugiriya - Polpitiya PS - Thulhiriya 132kV cct tripped & AR from all ends at 16:40hrs and 16:43hrs due to the operation of distance protection.
- 3) Biyagama - Kothmale 220kV cct 02 tripped and AR from both ends at 16:42hrs due to the operation of differential protection and Biyagama - Kothmale 220kV cct 01 tripped and AR from both ends at 17:10hrs due to the operation of differential protection.