

Generation and Reservoirs Statistics

April 28, 2024



PUBLIC UTILITIES COMMISSION OF SRI LANKA

1. Daily Generation Mix in MWh

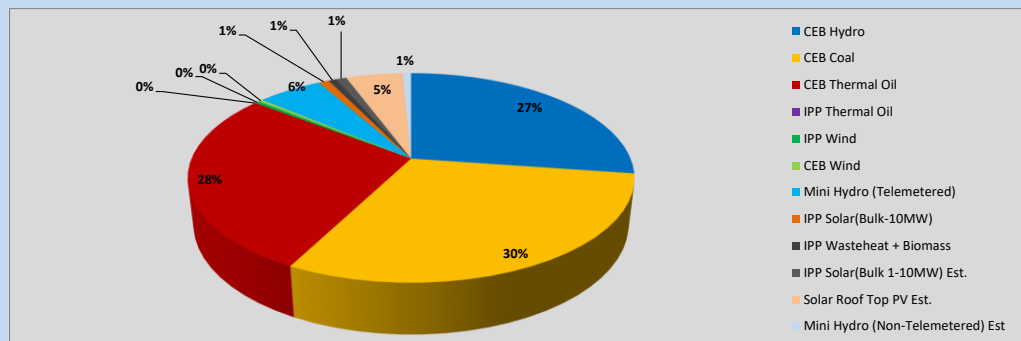


Table 01

	Generation (MWh)
CEB Hydro	11,560
CEB Coal	12,854
CEB Thermal Oil	11,818
IPP Thermal Oil	-
IPP Wind	170
CEB Wind	172
Mini Hydro (Telemetered)	2,367
IPP Solar (Bulk)	383
IPP Waste heat + Biomass	283
Total Generation (Excluding estimated figures)	39,607
* Estimated unserved energy	0
* Estimated Mini Hydro (Non telemetered)	315
* Estimated IPP Solar PV (Bulk 1-10MW)	389
* Estimated Solar Roof Top PV	2080
Total Generation (Including estimated figures)	42,391

* Estimated figures of CEB generation report

Table 02

	Installed Capacity (MW)
CEB Hydro	1644
CEB Coal	810
CEB Thermal Oil	773.1
IPP Thermal Oil (West Coast)	270
IPP Wind	163
CEB Wind	100
Mini Hydro	422
IPP Waste heat + Biomass	54
IPP Solar	137
Rooftop Solar (Ordinary)	293
Rooftop Solar (LT Bulk)	272
Rooftop Solar (HT Bulk)	74

Data Source - Monthly Review Report [Nov-2023]

2. Cumulative Dispatch

Following data excludes the contribution from roof top solar, non telemetered solar and mini hydro plants

Table 03 - Current Month

Category	Dispatch (GWh)	Percentage
CEB Hydro	352	27.94%
CEB Coal	453	35.94%
CEB Thermal Oil	222	17.63%
IPP Thermal	76	6.07%
SPP Wind	8	0.63%
CEB Wind	8	0.62%
Mini Hydro *	51	4.02%
IPP Solar *	79	6.27%
IPP Waste heat + BMP	11	0.87%
Total	1,259	

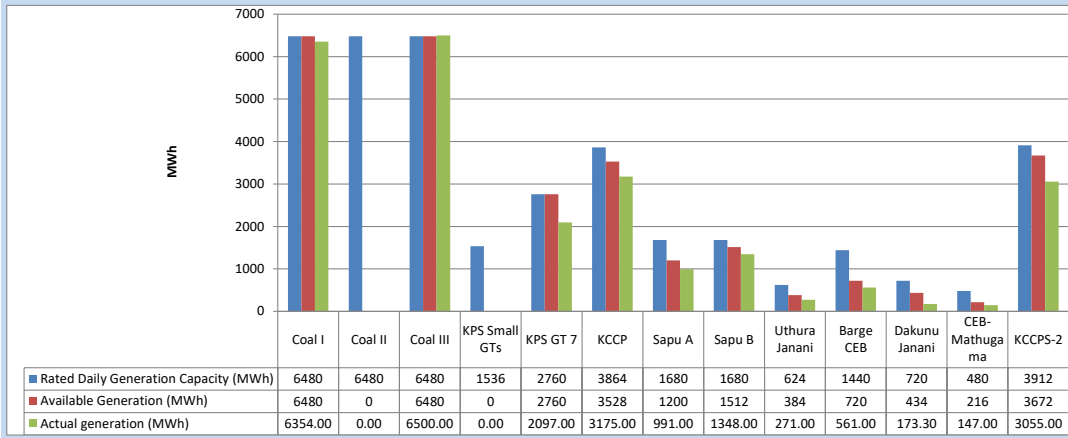
Table 04 - Current Year

Category	Dispatch (GWh)	Percentage
CEB Hydro	1,613	30.37%
CEB Coal	1,927	36.26%
CEB Thermal Oil	601	11.31%
IPP Thermal	408	7.67%
SPP Wind	57	1.07%
CEB Wind	63	1.18%
Mini Hydro *	306	5.75%
IPP Solar *	290	5.47%
IPP Waste heat	49	0.91%
Total	5,313	

*Including estimated contribution from non telemetered plants

3. CEB owned Thermal Plant Dispatch

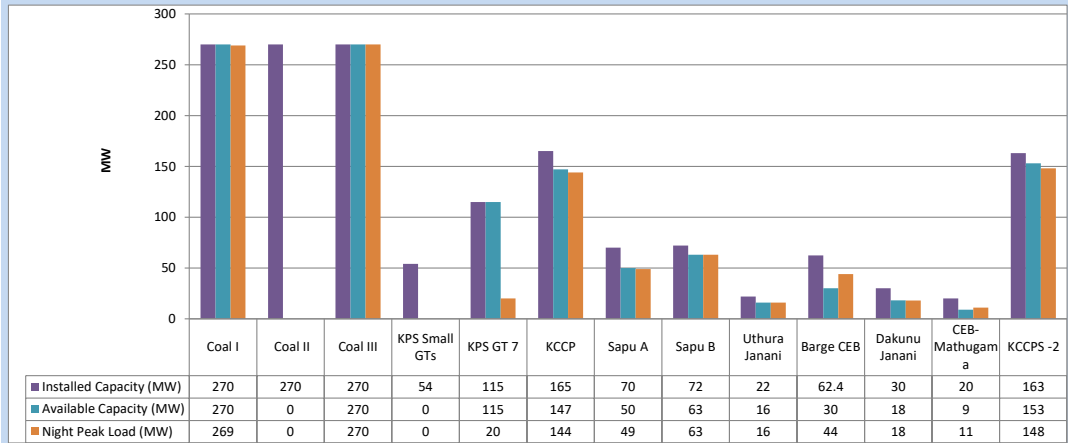
April 28, 2024



Available Generation is estimated based on plant availability at 6.00am on

April 29, 2024

4. CEB owned Thermal Plant Loading at the Night Peak

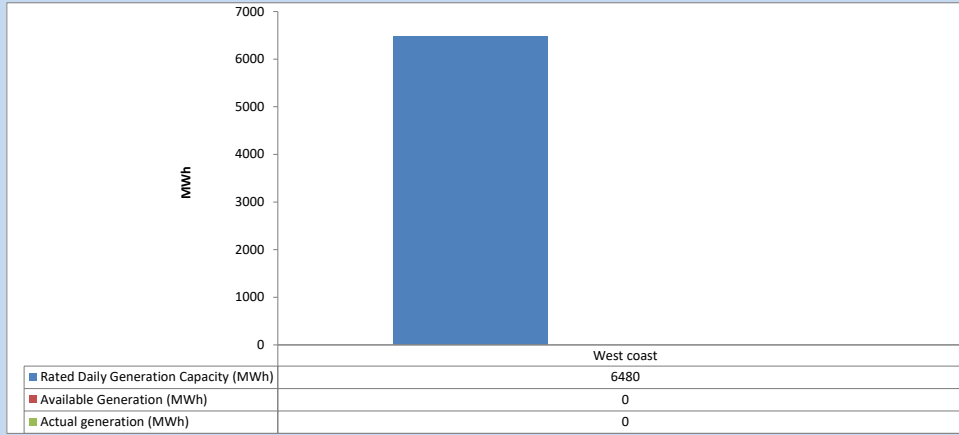


Plant availability is recorded at 6.00 am on

April 29, 2024

5. IPP owned Thermal Plant Dispatch

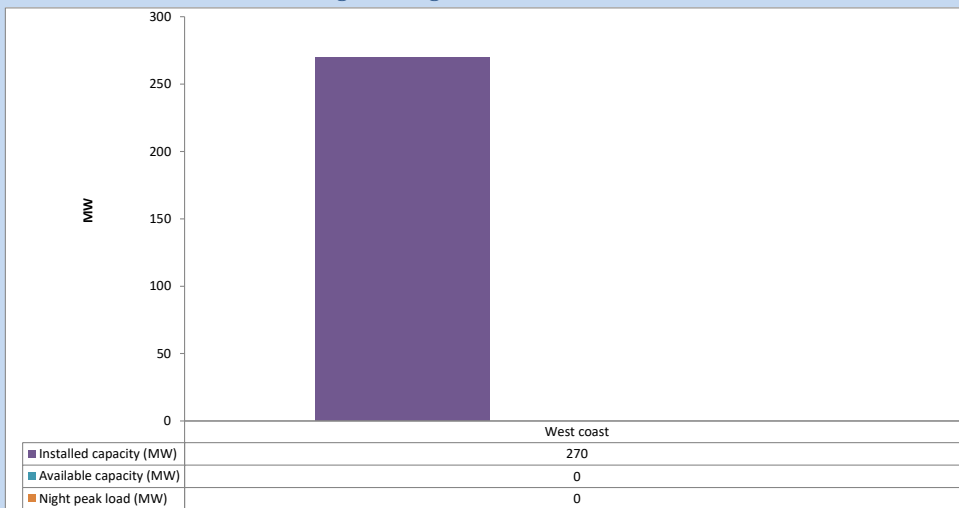
April 28, 2024



Available Generation is estimated based on plant availability at 6.00am on

April 29, 2024

6. IPP owned Thermal Plant Loading at the Night Peak

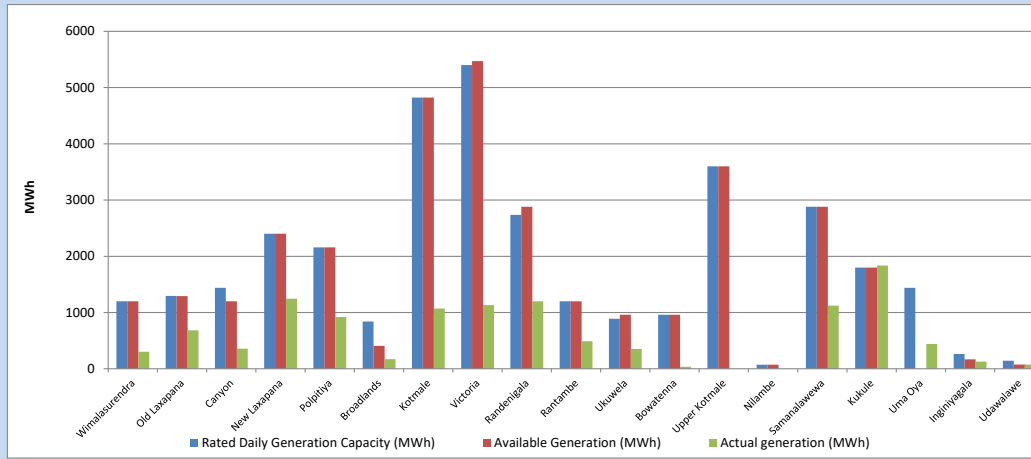


Plant availability is recorded at 6.00 am on

April 29, 2024

7. Major Hydro Plant Dispatch

April 28, 2024

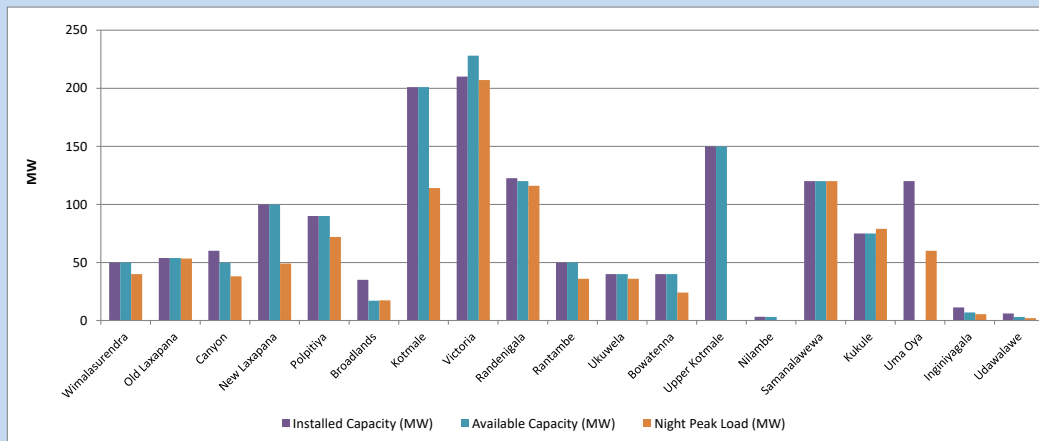


Available Generation is estimated based on plant availability at 6.00am on
Broadlands power plant is operating in the Commissioning Stage

April 29, 2024

8. Major Hydro Plant Loading at Night Peak

April 28, 2024



Plant availability is recorded at 6.00 am on
Broadlands power plant is operating in the Commissioning Stage

April 29, 2024

9. Summary of Major Plant performance

Table 05

Plant	Maximum Available Total Capacity	Plant Availability	Night peak Load	Plant Dispatch
	(MW)	(MW)	(MW)	(MWh)
Wimalasurendra	50	50	40	302
Old Laxapana	54	54	53	684
Canyon	60	50	38	359
New Laxapana	100	100	49	1,245
Polpitiya	90	90	72	920
Broadlands	35	17	17	171
Kotmale	201	201	114	1,070
Victoria	210	228	207	1,132
Randenigala	123	120	116	1,199
Rantambe	50	50	36	490
Ukuwela	40	40	36	353
Bowatenna	40	40	24	36
Upper Kotmale	150	150	0	0
Nilambe	3	3	0	0
Samanalawewa	120	120	120	1,122
Kukule	75	75	79	1,837
Uma Oya (Testing)	120	0	60	440
Inginiyagala	11	7	5	126
Udawalawe	6	3	2	75
Puttalam Coal I	270	270	269	6,354
Puttalam Coal II	270	0	0	0
Puttalam Coal III	270	270	270	6,500
KPS Small GTs	54	0	0	0
KPS GT 7	115	115	20	2,097
KCCP	165	147	144	3,175
Sapugaskanda A	70	50	49	991
Sapugaskanda B	72	63	63	1,348
Uthura Janani	22	16	16	271
Barge CEB	62	30	44	561
CEB-Hambantota	30	18	18	173
CEB-Mathugama	20	9	11	147
ACE Matara	24	0	0	0
Asia Power	50	0	0	0
KCCPS -2	163	153	148	3,055
West Coast	270	0	0	0
Nothern Power	36	0	0	0
ACE Embilipitiya	93	0	0	0
Total	3,594	2,539	2,227	39,608

Note-

Plant availability is the availability recorded at 6 am on

April 29, 2024

Installed Capacity is sourced from CEB Annual Report- 2022

10. Contribution to the Night Peak in MW

April 28, 2024

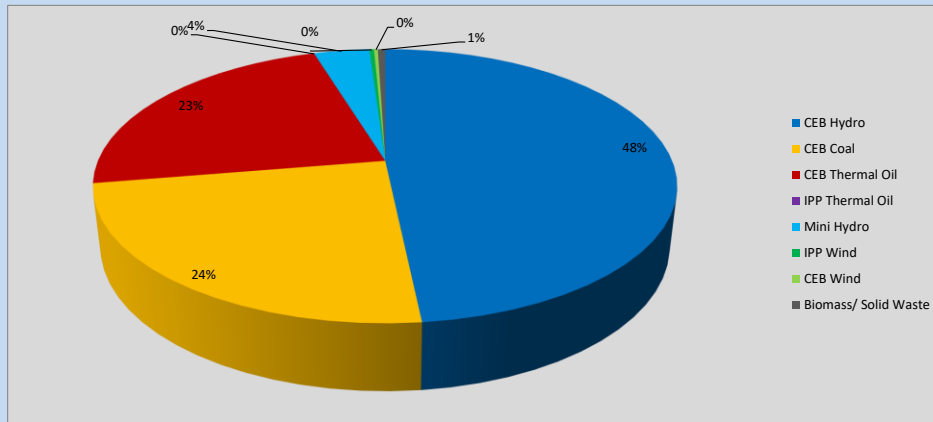


Table 06

CEB Hydro	1083	MW
CEB Coal	539	MW
CEB Thermal Oil	513	MW
IPP Thermal Oil	0	MW
Mini Hydro (Telemetered)	82	MW
IPP Wind	6.8	MW
CEB Wind	5.7	MW
Biomass/ Solid Waste	11	MW

Recorded Peak Demand Data

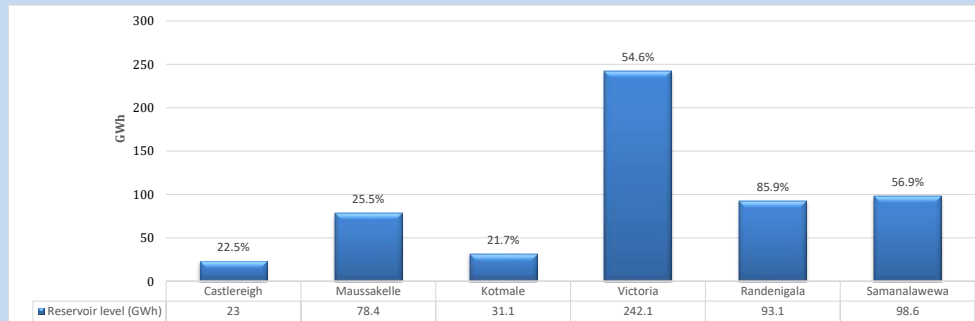
Table 07

Night Peak*	2,241	MW
Day Peak Maximum Demand	1,793	MW
Day Peak Minimum Demand	1,329	MW
Off Peak Minimum Demand	1,471	MW

Above figures are excluding contribution from roof top solar, non telemetered solar and mini hydro plants

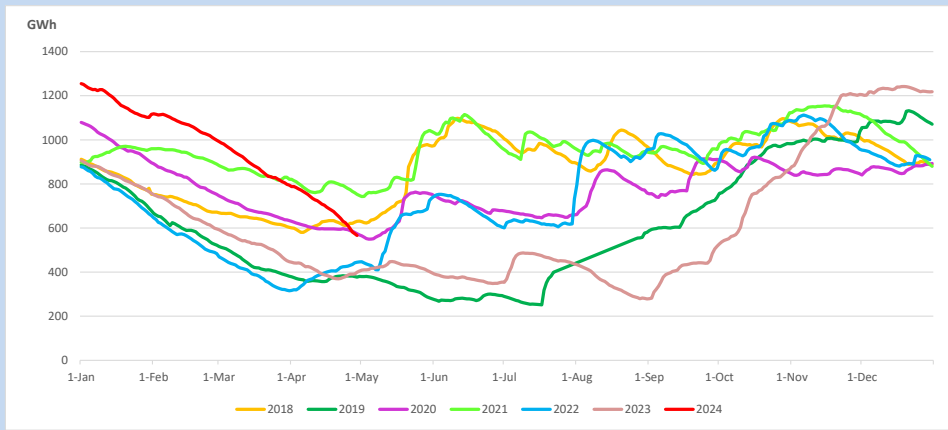
Reservoir Levels -

as at 06.00 Hr on April 29, 2024

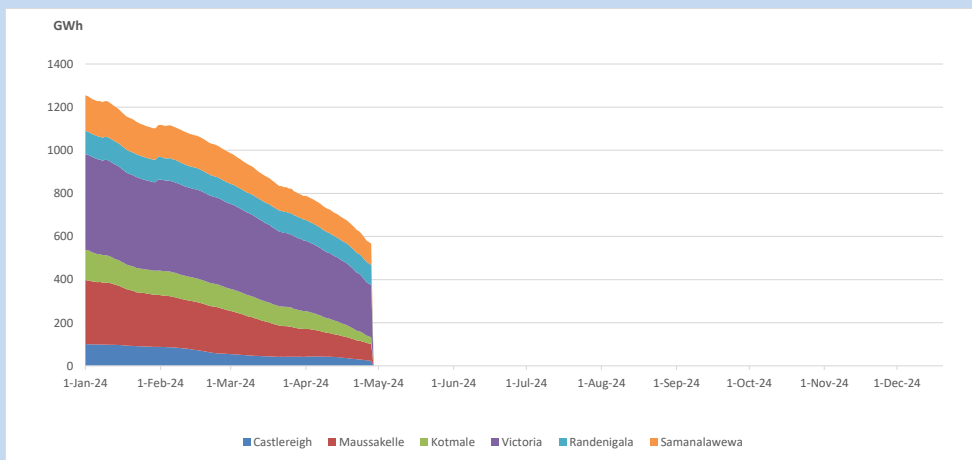


Total Reservoir Level 566.3 GWh
% of Total capacity 44.3%

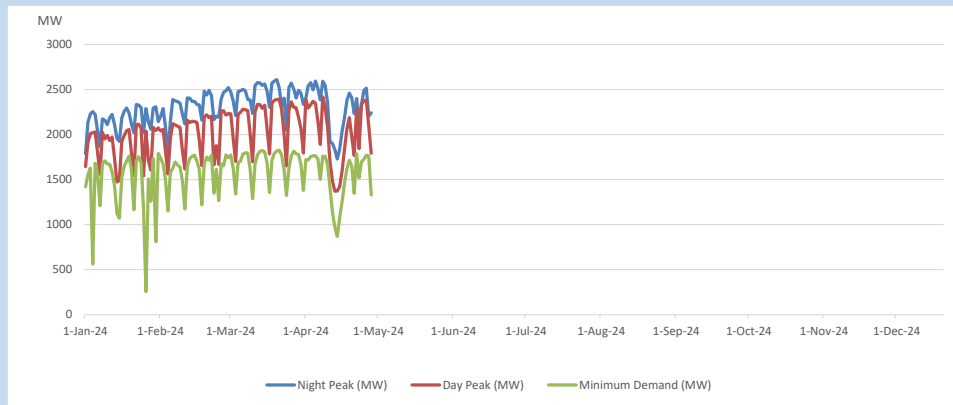
11. Comparison of Total Reservoir Storage Levels with Past Years



12. Variation of Major Hydro Reservoir Levels in the current year (GWh)



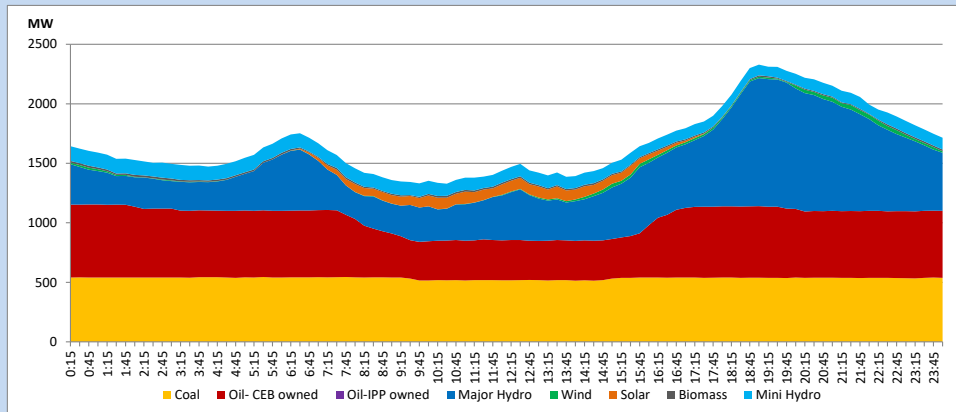
13. Variation of Demand during the current year



The above figures are excluding contribution from roof top solar, non telemetered solar and mini hydro plants

14. Daily Load Curve

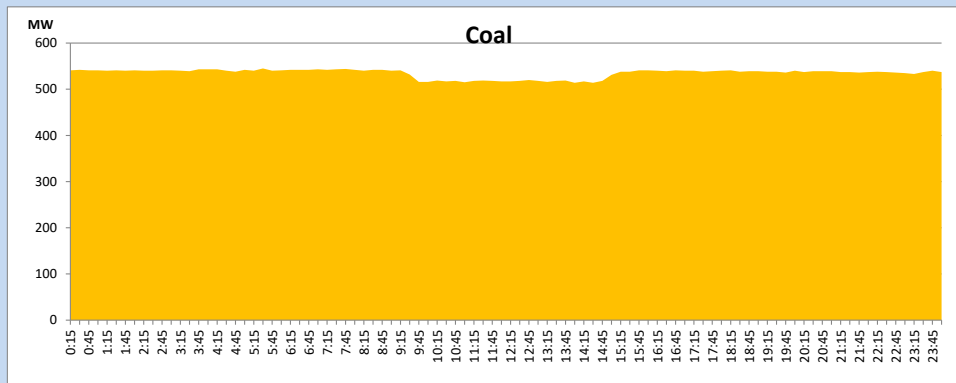
April 28, 2024



Solar and wind data is based on Telemetered Power Stations only

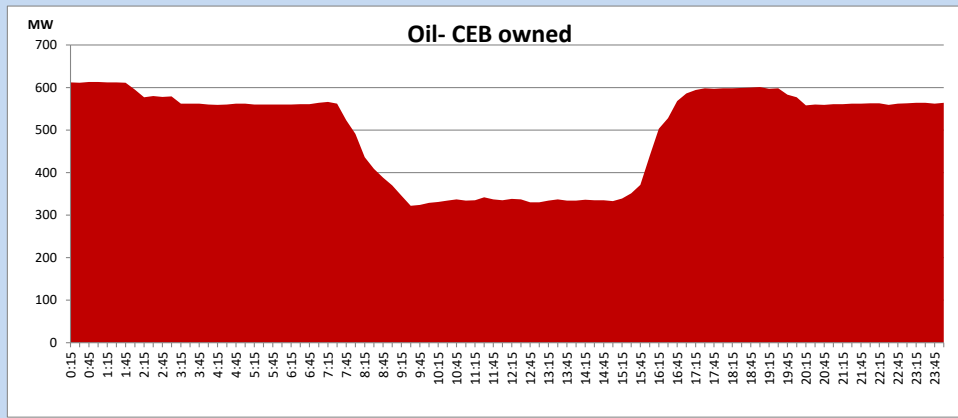
Coal Generation during

April 28, 2024



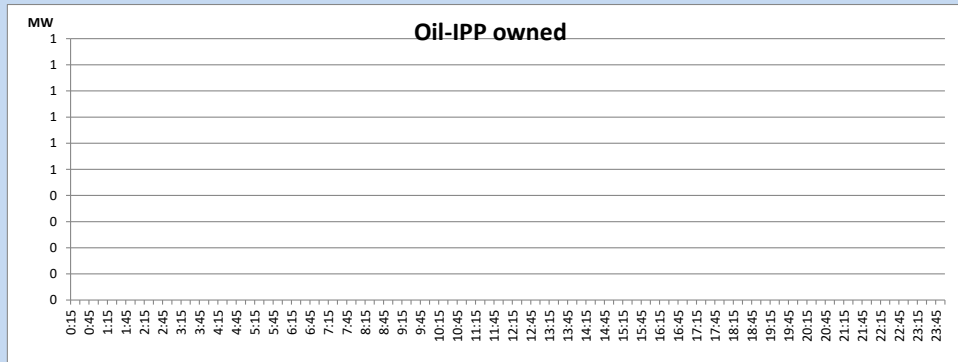
CEB Oil Plant Generation during

April 28, 2024



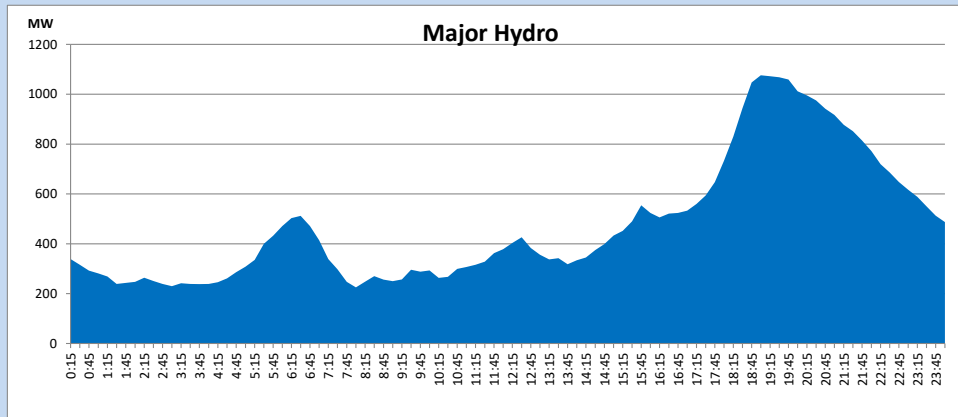
IPP Oil Plant Generation during

April 28, 2024



Major Hydro Generation during

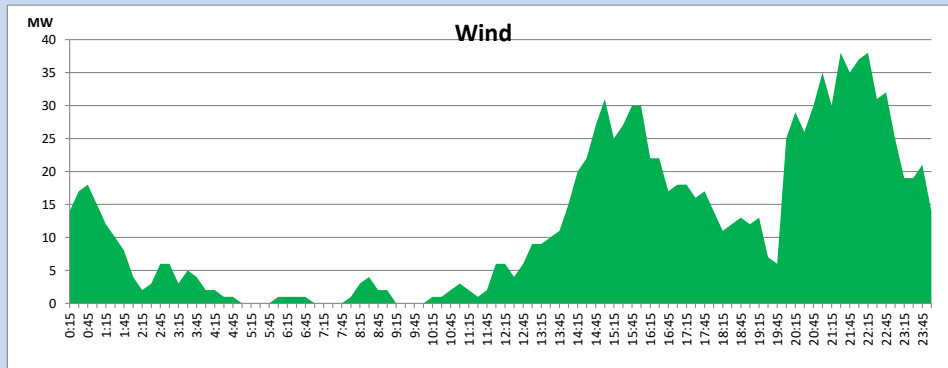
April 28, 2024



Wind Generation during

April 28, 2024

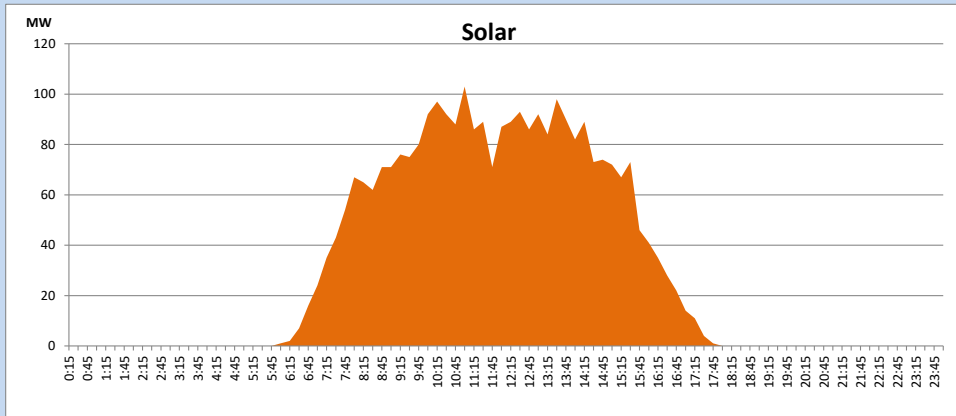
Based on Telemetered Power Stations only



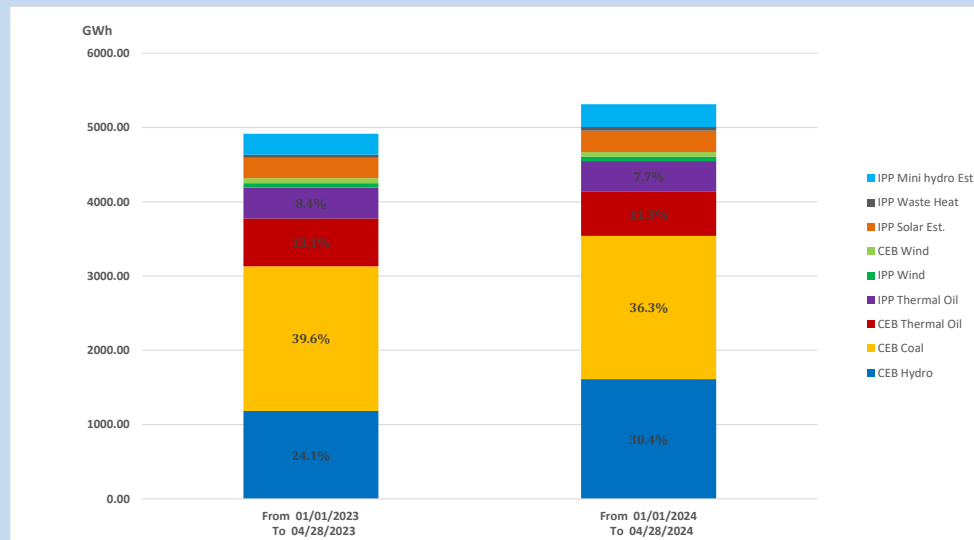
Solar Generation during

April 28, 2024

Based on Telemetered Power Stations only



15. Cumulative Dispatch Comparison with Last Year



Cumulative dispatch

From 01/01/2023 To 04/28/2023

4916 GWh

From 01/01/2024 To 04/28/2024

5313 GWh

The above figures are including contribution from roof top solar, non telemetered solar and mini hydro plants)

Unserviced energy due to power cuts has been excluded in 2023

Thermal Plant Fuel types

Table 08

Power Station	Primary Fuel
CEB Thermal	
Sapugaskanda 1	Heavy Fuel
Sapugaskanda 2	Heavy Fuel
Kelanitissa Small Gas Turbines	Auto Diesel
GT 7 - Kelanitissa	Auto Diesel
Kelanitissa CCY	Naphtha or Diesel
Lakvijaya 1	Coal
Lakvijaya 2	Coal
Lakvijaya 3	Coal
Uthuru Janani	Heavy Fuel
Barge CEB	Heavy Fuel
KCCPS -2	Auto Diesel

Power Station	Primary Fuel
Private Thermal	
West Coast	Auto Diesel / Heavy Fuel

Major Incidents reported during the day

April 28, 2024

- 1) Kukule unit 02 de-loaded to OMW and de-synchronized from the system at 08:18hrs due to penstock pressure low. The unit resumed generation at 08:34hrs.
- 2) New Laxapana Unit 02 made a forced shutdown at 14:55hrs due to high turbine guide-bearing temperature. New Laxapana unit 02 resumed generation at 19:34hrs.
- 3) Power Barge made a forced shutdown at 20:12hrs due to a cooling water system leak. Power Barge resumed generation at 05:33hrs (29.04.2024).
- 4) Kukule spilling stopped at 14:05hrs.