

# Generation and Reservoirs Statistics

May 15, 2024



PUBLIC UTILITIES COMMISSION OF SRI LANKA

## 1. Daily Generation Mix in MWh

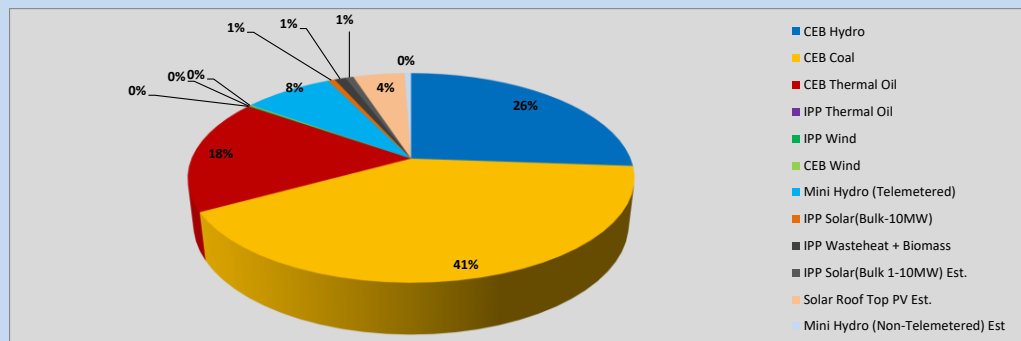


Table 01

	Generation (MWh)
CEB Hydro	12,471
CEB Coal	19,504
CEB Thermal Oil	8,441
IPP Thermal Oil	-
IPP Wind	50
CEB Wind	86
Mini Hydro (Telemetered)	3,697
IPP Solar (Bulk)	285
IPP Waste heat + Biomass	462
<b>Total Generation (Excluding estimated figures)</b>	<b>44,996</b>
* Estimated unserved energy	0
* Estimated Mini Hydro (Non telemetered)	267
* Estimated IPP Solar PV (Bulk 1-10MW)	332
* Estimated Solar Roof Top PV	2130
<b>Total Generation (Including estimated figures)</b>	<b>47,725</b>

\* Estimated figures of CEB generation report

Table 02

	Installed Capacity (MW)
CEB Hydro	1530
CEB Coal	810
CEB Thermal Oil	773.1
IPP Thermal Oil (West Coast)	270
IPP Wind	148
CEB Wind	100
Mini Hydro	416
IPP Waste heat + Biomass	50
IPP Solar	110
Rooftop Solar (Ordinary)	250
Rooftop Solar (LT Bulk)	234
Rooftop Solar (HT Bulk)	56

Data Source - Monthly Review Report [Jan-2024]

## 2. Cumulative Dispatch

Following data excludes the contribution from roof top solar, non telemetered solar and mini hydro plants

Table 03 - Current Month

Category	Dispatch (GWh)	
CEB Hydro	164	22.84%
CEB Coal	291	40.49%
CEB Thermal Oil	162	22.56%
IPP Thermal	0	0.00%
SPP Wind	6	0.89%
CEB Wind	9	1.31%
Mini Hydro *	38	5.34%
IPP Solar *	42	5.83%
IPP Waste heat + BMP	5	0.74%
<b>Total</b>	<b>718</b>	

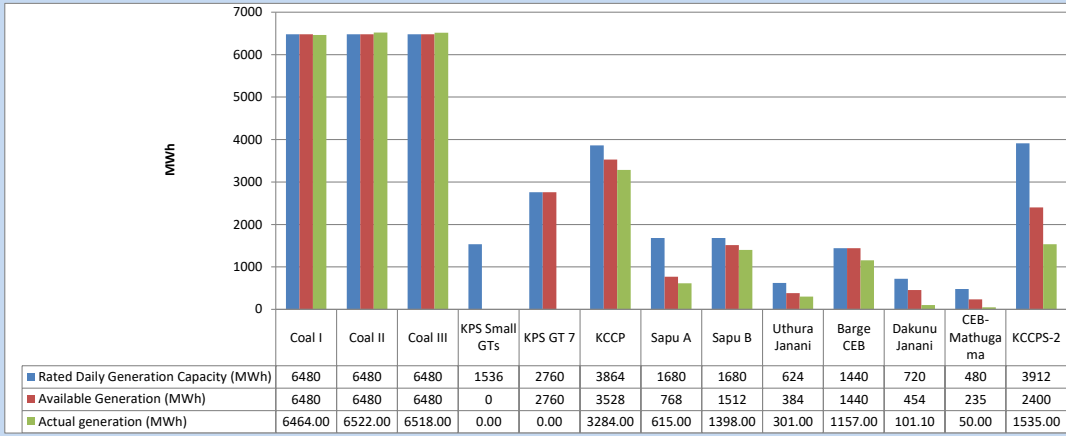
Table 04 - Current Year

Category	Dispatch (GWh)	
CEB Hydro	1,805	29.45%
CEB Coal	2,252	36.73%
CEB Thermal Oil	787	12.85%
IPP Thermal	408	6.65%
SPP Wind	64	1.04%
CEB Wind	73	1.18%
Mini Hydro *	349	5.69%
IPP Solar *	338	5.51%
IPP Waste heat	54	0.89%
<b>Total</b>	<b>6,130</b>	

\*Including estimated contribution from non telemetered plants

### 3. CEB owned Thermal Plant Dispatch

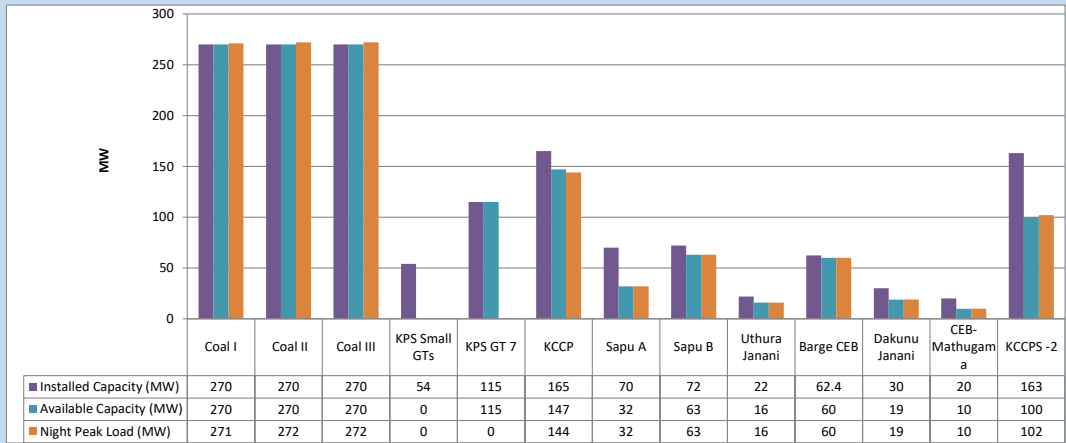
May 15, 2024



Available Generation is estimated based on plant availability at 6.00am on

May 16, 2024

### 4. CEB owned Thermal Plant Loading at the Night Peak

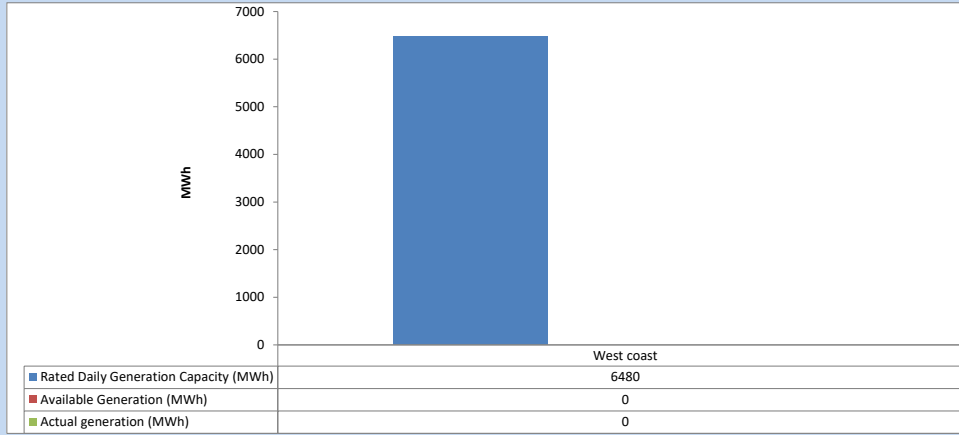


Plant availability is recorded at 6.00 am on

May 16, 2024

### 5. IPP owned Thermal Plant Dispatch

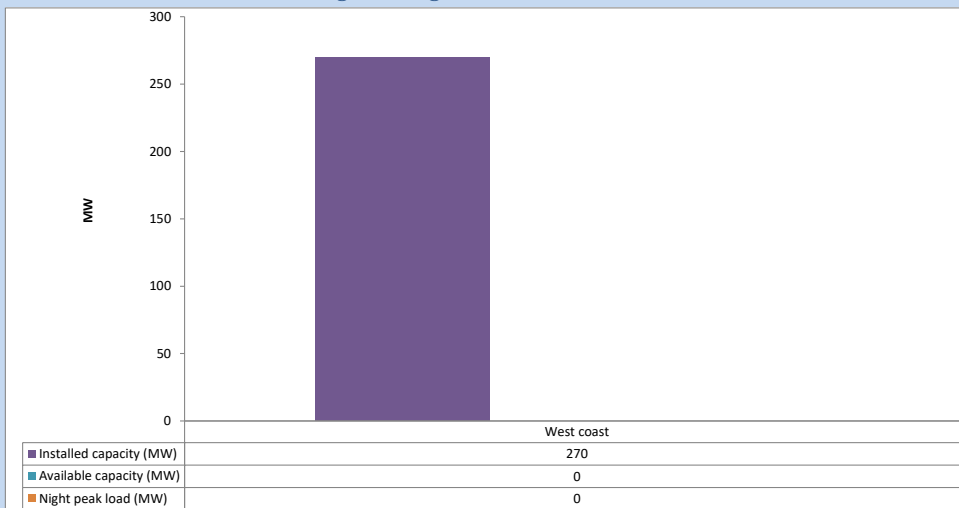
May 15, 2024



Available Generation is estimated based on plant availability at 6.00am on

May 16, 2024

### 6. IPP owned Thermal Plant Loading at the Night Peak

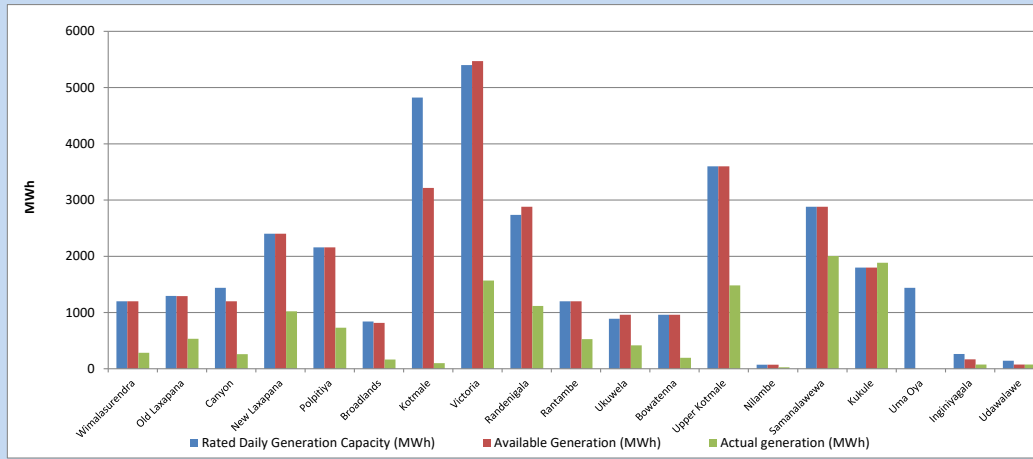


Plant availability is recorded at 6.00 am on

May 16, 2024

### 7. Major Hydro Plant Dispatch

May 15, 2024

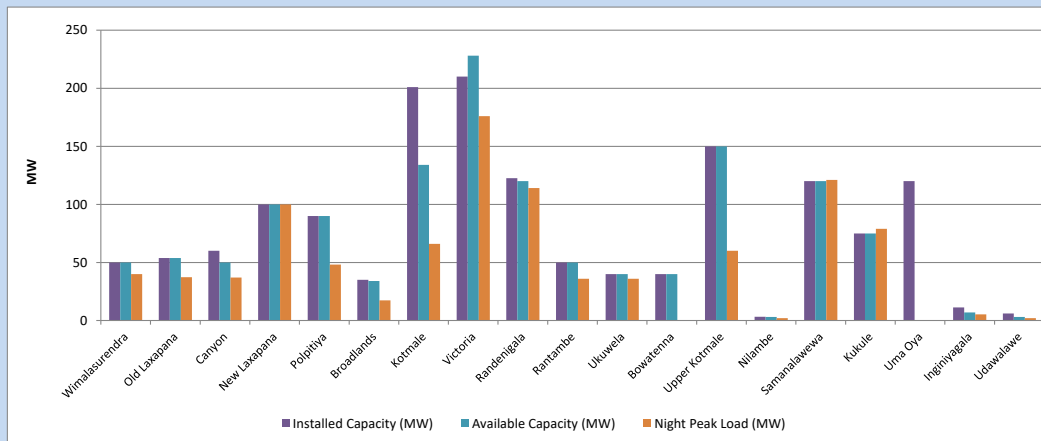


Available Generation is estimated based on plant availability at 6.00am on  
Broadlands power plant is operating in the Commissioning Stage

May 16, 2024

### 8. Major Hydro Plant Loading at Night Peak

May 15, 2024



Plant availability is recorded at 6.00 am on  
Broadlands power plant is operating in the Commissioning Stage

May 16, 2024

## 9. Summary of Major Plant performance

Table 05

Plant	Maximum Available Total Capacity	Plant Availability	Night peak Load	Plant Dispatch
	(MW)	(MW)	(MW)	(MWh)
Wimalasurendra	50	50	40	285
Old Laxapana	54	54	37	532
Canyon	60	50	37	261
New Laxapana	100	100	100	1,023
Polpitiya	90	90	48	730
Broadlands	35	34	17	164
Kotmale	201	134	66	100
Victoria	210	228	176	1,568
Randenigala	123	120	114	1,118
Rantambe	50	50	36	528
Ukuwela	40	40	36	417
Bowatenna	40	40	0	196
Upper Kotmale	150	150	60	1,483
Nilambe	3	3	2	26
Samanalawewa	120	120	121	2,005
Kukule	75	75	79	1,884
Uma Oya (Testing )	120	0	0	0
Inginiyagala	11	7	5	76
Udawalawe	6	3	2	76
Puttalam Coal I	270	270	271	6,464
Puttalam Coal II	270	270	272	6,522
Puttalam Coal III	270	270	272	6,518
KPS Small GTs	54	0	0	0
KPS GT 7	115	115	0	0
KCCP	165	147	144	3,284
Sapugaskanda A	70	32	32	615
Sapugaskanda B	72	63	63	1,398
Uthura Janani	22	16	16	301
Barge CEB	62	60	60	1,157
CEB-Hambantota	30	19	19	101
CEB-Mathugama	20	10	10	50
ACE Matara	24	0	0	0
Asia Power	50	0	0	0
KCCPS -2	163	100	102	1,535
West Coast	270	0	0	0
Nothern Power	36	0	0	0
ACE Embilipitiya	93	0	0	0
<b>Total</b>	<b>3,594</b>	<b>2,720</b>	<b>2,404</b>	<b>44,997</b>

Note-

Plant availability is the availability recorded at 6 am on

May 16, 2024

Installed Capacity is sourced from CEB Annual Report- 2022

### 10. Contribution to the Night Peak in MW

May 15, 2024

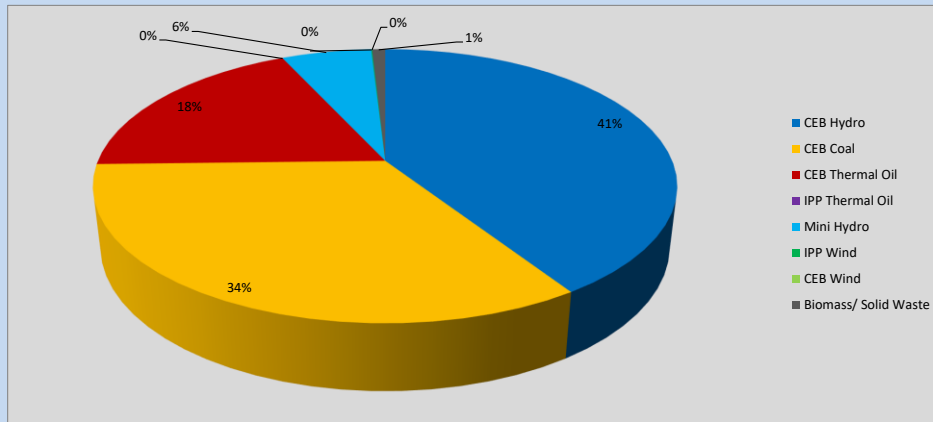


Table 06

CEB Hydro	983	MW
CEB Coal	815	MW
CEB Thermal Oil	446	MW
IPP Thermal Oil	0	MW
Mini Hydro (Telemetered)	143	MW
IPP Wind	1.4	MW
CEB Wind	0	MW
Biomass/ Solid Waste	21	MW

### Recorded Peak Demand Data

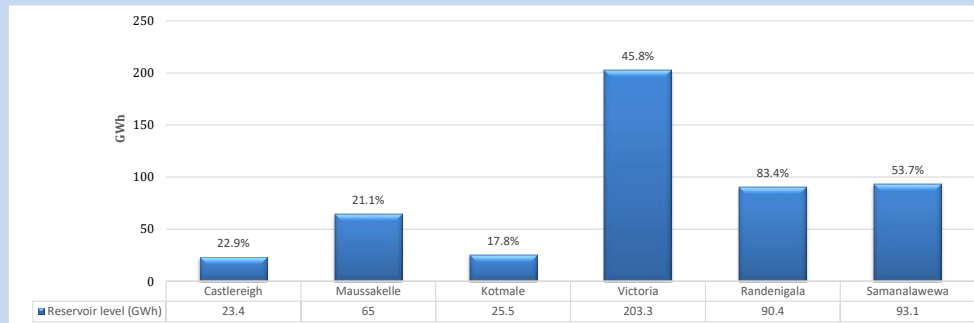
Table 07

Night Peak*	2,410	MW
Day Peak Maximum Demand	2,256	MW
Day Peak Minimum Demand	1,750	MW
Off Peak Minimum Demand	1,381	MW

Above figures are excluding contribution from roof top solar, non telemetered solar and mini hydro plants

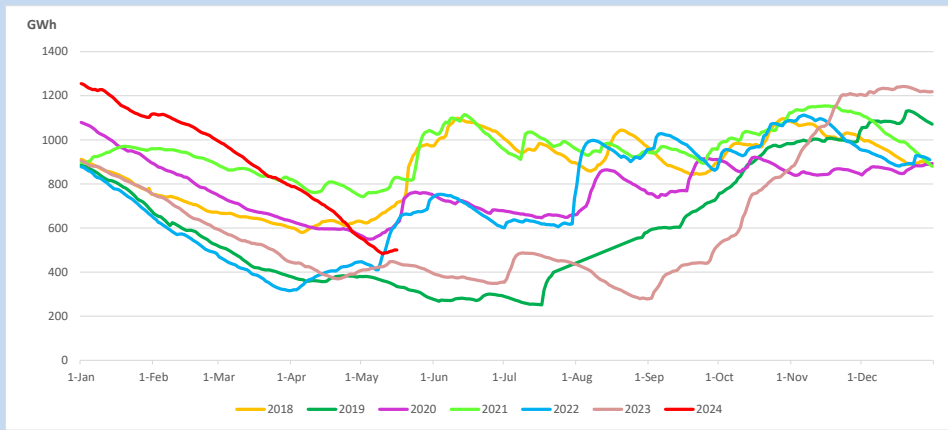
### Reservoir Levels -

as at 06.00 Hr on May 16, 2024

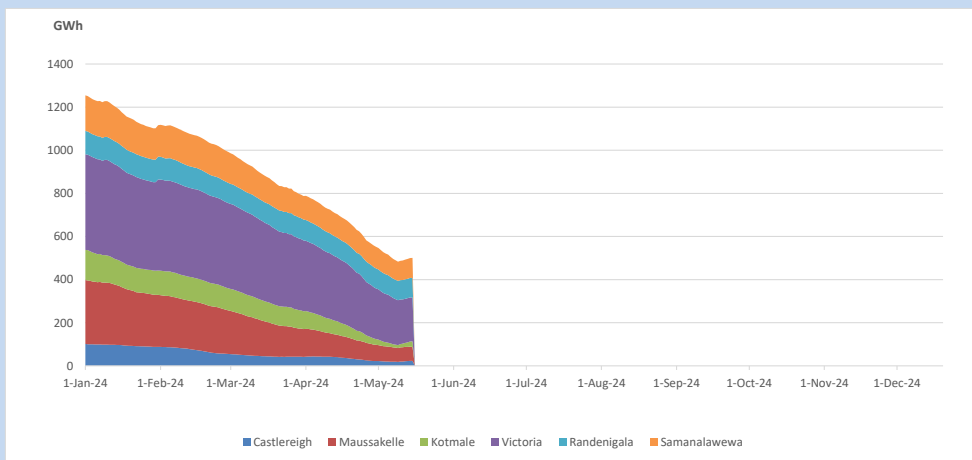


Total Reservoir Level 500.7 GWh  
% of Total capacity 39.1%

### 11. Comparison of Total Reservoir Storage Levels with Past Years

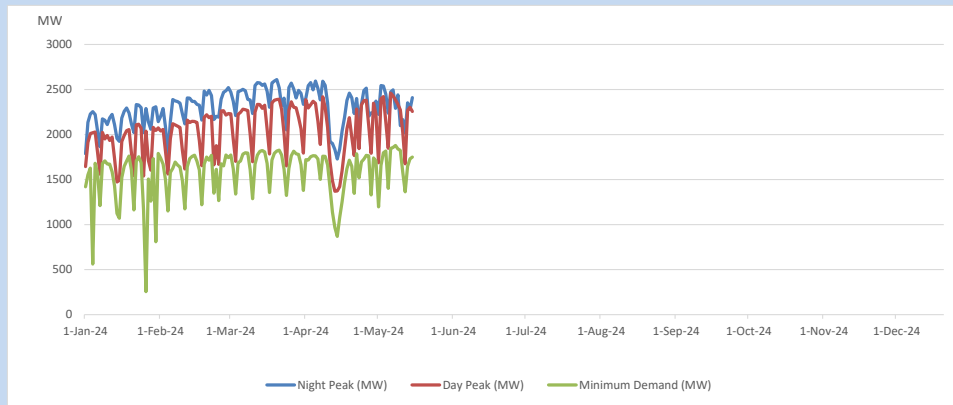


### 12. Variation of Major Hydro Reservoir Levels in the current year (GWh)





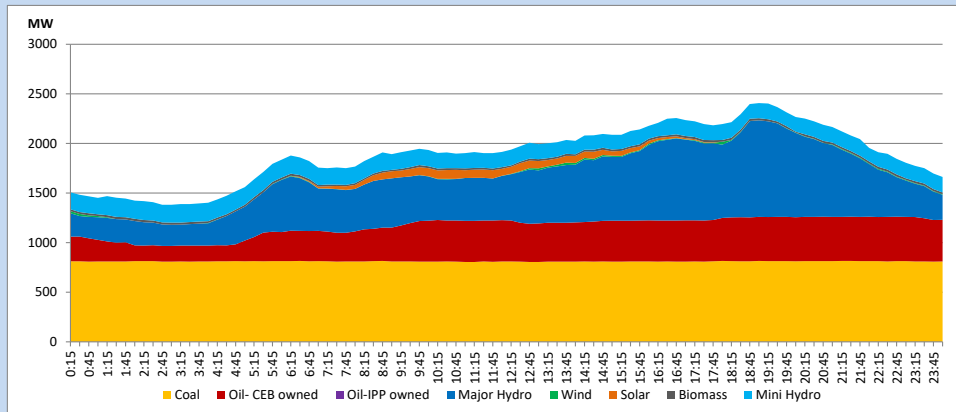
### 13. Variation of Demand during the current year



The above figures are excluding contribution from roof top solar, non telemetered solar and mini hydro plants

### 14. Daily Load Curve

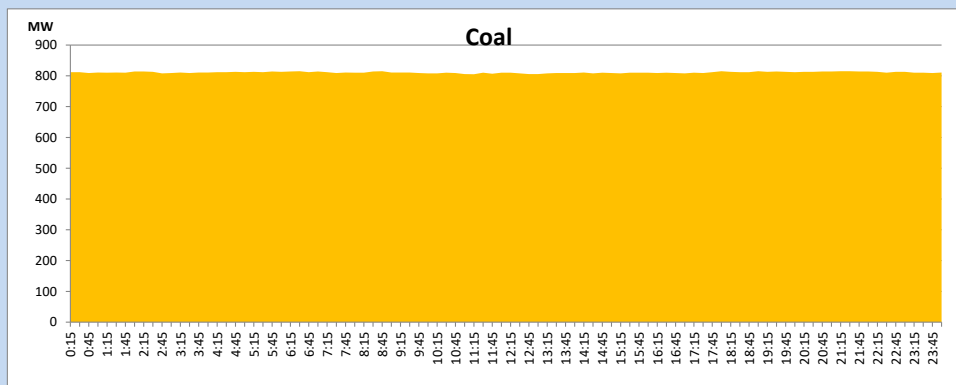
May 15, 2024



Solar and wind data is based on Telemetered Power Stations only

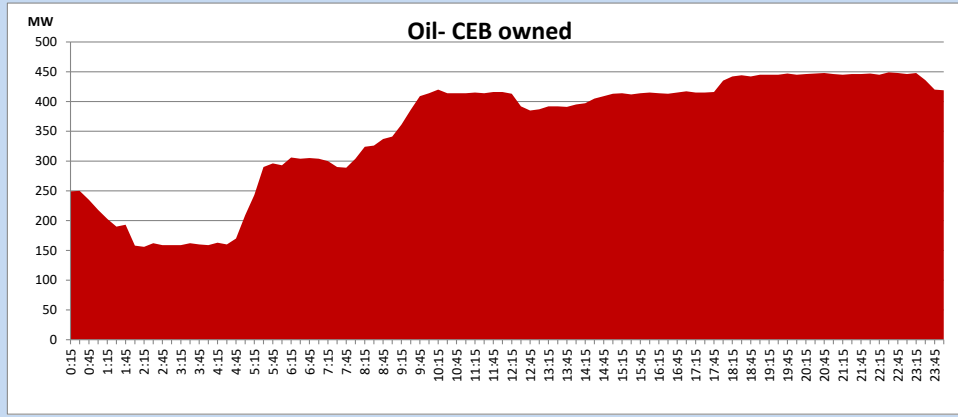
### Coal Generation during

May 15, 2024



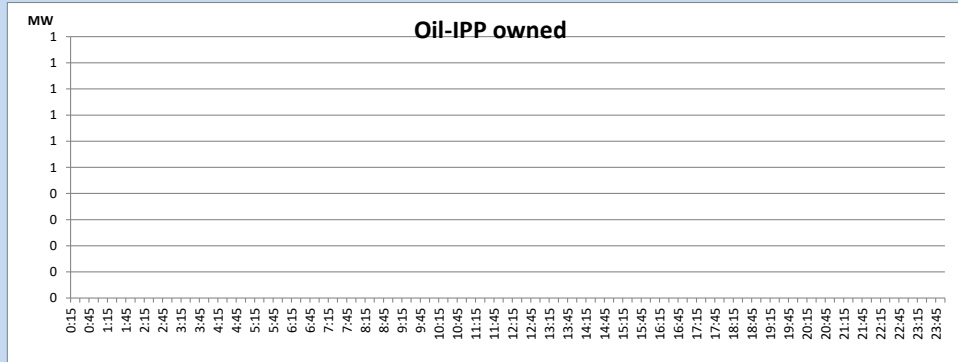
CEB Oil Plant Generation during

May 15, 2024



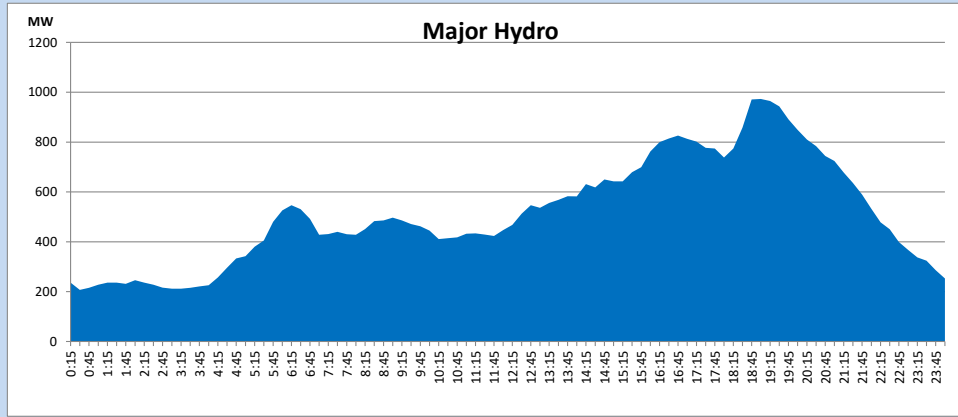
IPP Oil Plant Generation during

May 15, 2024



Major Hydro Generation during

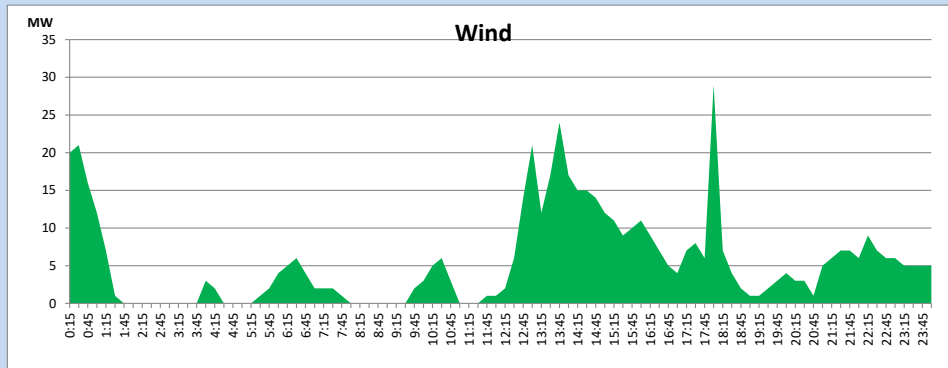
May 15, 2024



## Wind Generation during

May 15, 2024

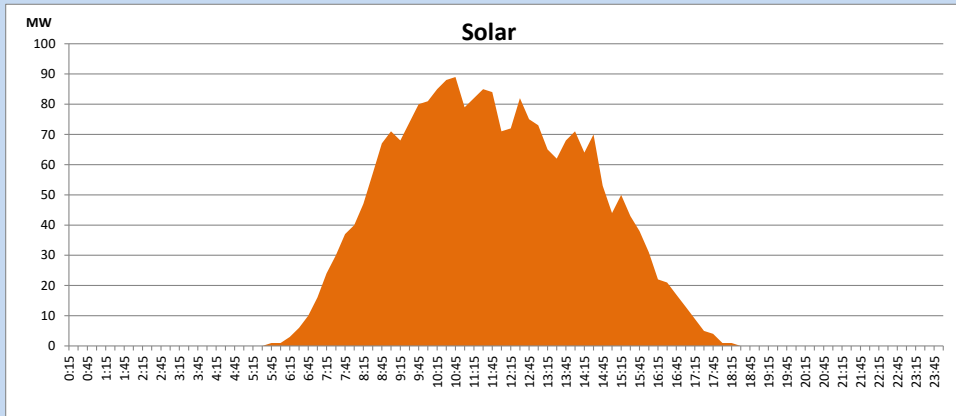
Based on Telemetered Power Stations only



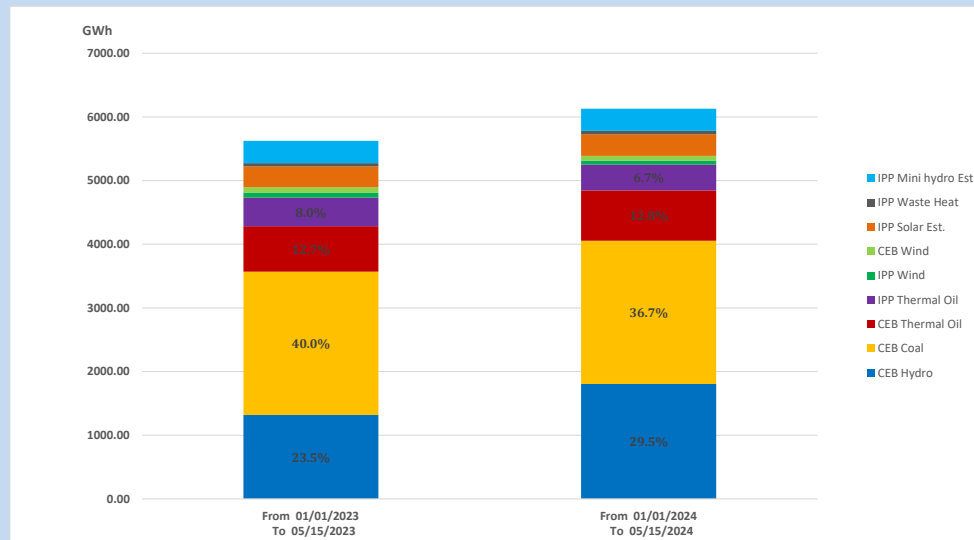
## Solar Generation during

May 15, 2024

Based on Telemetered Power Stations only



## 15. Cumulative Dispatch Comparison with Last Year



Cumulative dispatch  
 From 01/01/2023 To 05/15/2023  
 From 01/01/2024 To 05/15/2024

5625 GWh  
 6130 GWh

The above figures are including contribution from roof top solar, non telemetered solar and mini hydro plants)  
 Unused energy due to power cuts has been excluded in 2023

Thermal Plant Fuel types

Table 08

Power Station	Primary Fuel
CEB Thermal	
Sapugaskanda 1	Heavy Fuel
Sapugaskanda 2	Heavy Fuel
Kelanitissa Small Gas Turbines	Auto Diesel
GT 7 - Kelanitissa	Auto Diesel
Kelanitissa CCY	Naphtha or Diesel
Lakvijaya 1	Coal
Lakvijaya 2	Coal
Lakvijaya 3	Coal
Uthuru Janani	Heavy Fuel
Barge CEB	Heavy Fuel
KCCPS -2	Auto Diesel

Power Station	Primary Fuel
Private Thermal	
West Coast	Auto Diesel / Heavy Fuel

Major Incidents reported during the day

May 15, 2024

- 1) Embilipitiya – Beliatta 132kV cct tripped and A/R from both ends at 06:20hrs due to the operation of distance protection.
- 2) Kukule Pond spilling stopped at 16:40hrs.