

Generation and Reservoirs Statistics

May 13, 2024



PUBLIC UTILITIES COMMISSION OF SRI LANKA

1. Daily Generation Mix in MWh

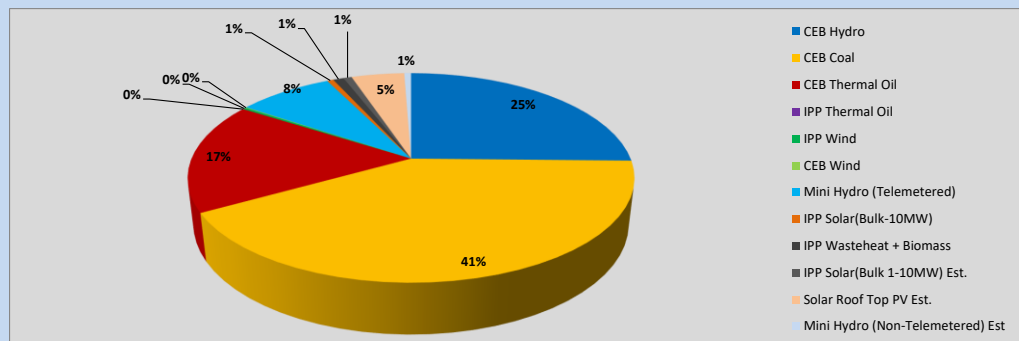


Table 01

	Generation (MWh)
CEB Hydro	11,772
CEB Coal	19,315
CEB Thermal Oil	7,985
IPP Thermal Oil	-
IPP Wind	135
CEB Wind	45
Mini Hydro (Telemetered)	3,815
IPP Solar (Bulk)	257
IPP Waste heat + Biomass	426
Total Generation (Excluding estimated figures)	43,750
* Estimated unserved energy	0
* Estimated Mini Hydro (Non telemetered)	275
* Estimated IPP Solar PV (Bulk 1-10MW)	334
* Estimated Solar Roof Top PV	2130
Total Generation (Including estimated figures)	46,489

* Estimated figures of CEB generation report

Table 02

	Installed Capacity (MW)
CEB Hydro	1530
CEB Coal	810
CEB Thermal Oil	773.1
IPP Thermal Oil (West Coast)	270
IPP Wind	148
CEB Wind	100
Mini Hydro	416
IPP Waste heat + Biomass	50
IPP Solar	110
Rooftop Solar (Ordinary)	250
Rooftop Solar (LT Bulk)	234
Rooftop Solar (HT Bulk)	56

Data Source - Monthly Review Report [Jan-2024]

2. Cumulative Dispatch

Following data excludes the contribution from roof top solar, non telemetered solar and mini hydro plants

Table 03 - Current Month

Category	Dispatch (GWh)	
CEB Hydro	140	22.46%
CEB Coal	252	40.44%
CEB Thermal Oil	145	23.25%
IPP Thermal	0	0.00%
SPP Wind	6	1.00%
CEB Wind	9	1.47%
Mini Hydro *	30	4.84%
IPP Solar *	36	5.83%
IPP Waste heat + BMP	4	0.70%
Total	623	

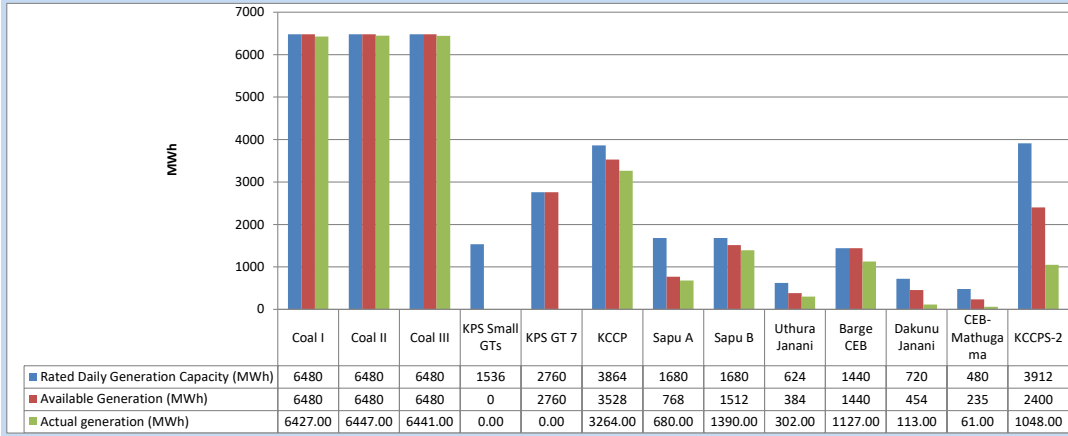
Table 04 - Current Year

Category	Dispatch (GWh)	
CEB Hydro	1,781	29.52%
CEB Coal	2,213	36.67%
CEB Thermal Oil	770	12.77%
IPP Thermal	408	6.76%
SPP Wind	64	1.06%
CEB Wind	72	1.20%
Mini Hydro *	341	5.65%
IPP Solar *	332	5.51%
IPP Waste heat	53	0.88%
Total	6,035	

*Including estimated contribution from non telemetered plants

3. CEB owned Thermal Plant Dispatch

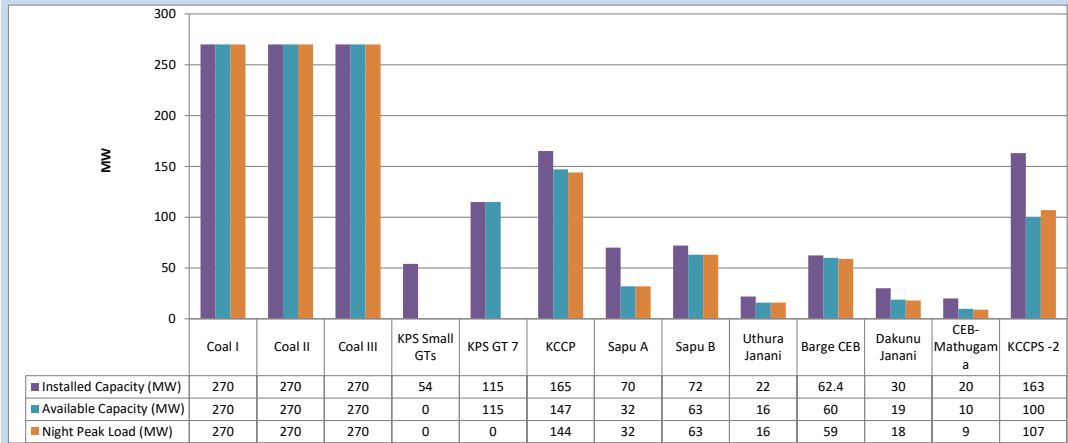
May 13, 2024



Available Generation is estimated based on plant availability at 6.00am on

May 14, 2024

4. CEB owned Thermal Plant Loading at the Night Peak

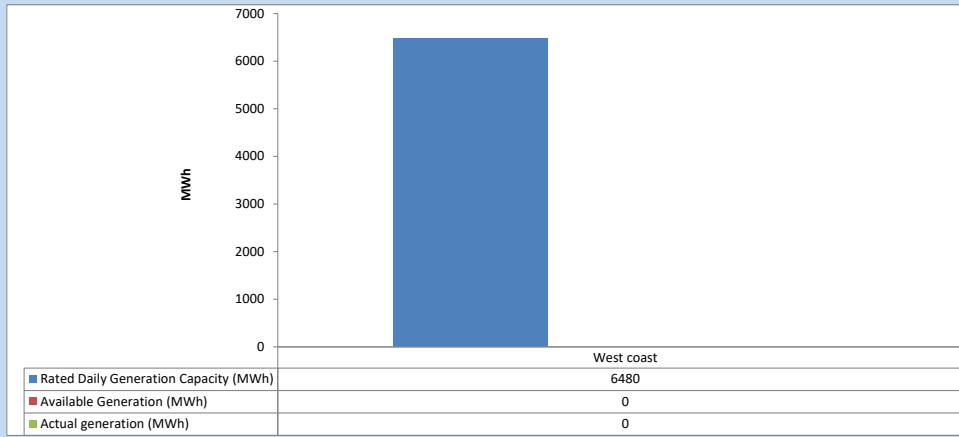


Plant availability is recorded at 6.00 am on

May 14, 2024

5. IPP owned Thermal Plant Dispatch

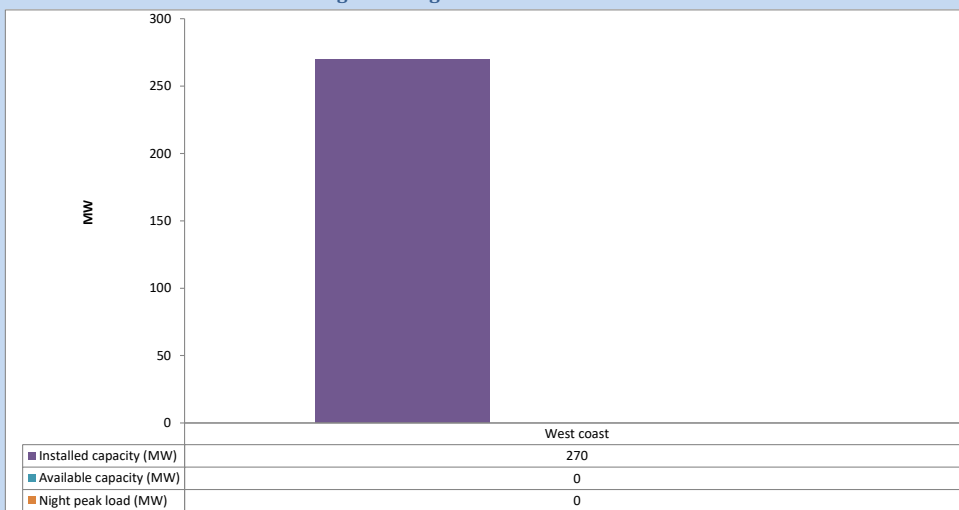
May 13, 2024



Available Generation is estimated based on plant availability at 6.00am on

May 14, 2024

6. IPP owned Thermal Plant Loading at the Night Peak

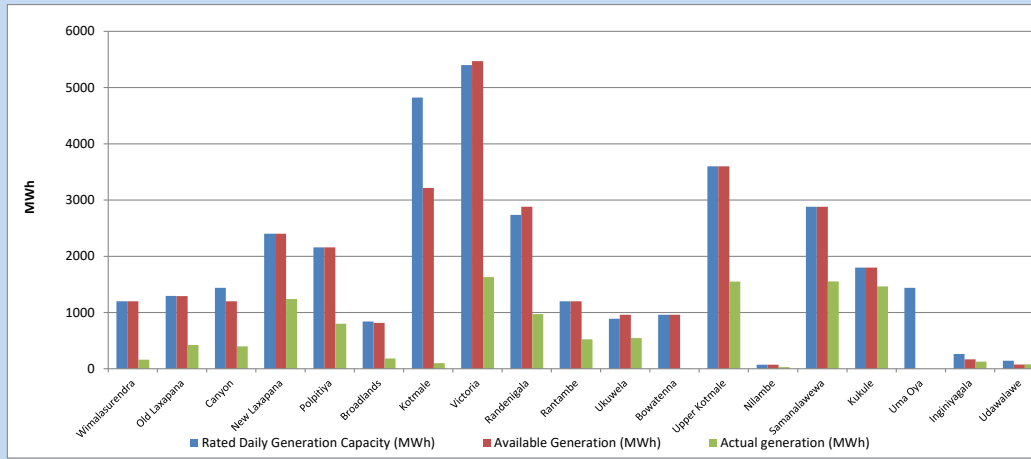


Plant availability is recorded at 6.00 am on

May 14, 2024

7. Major Hydro Plant Dispatch

May 13, 2024

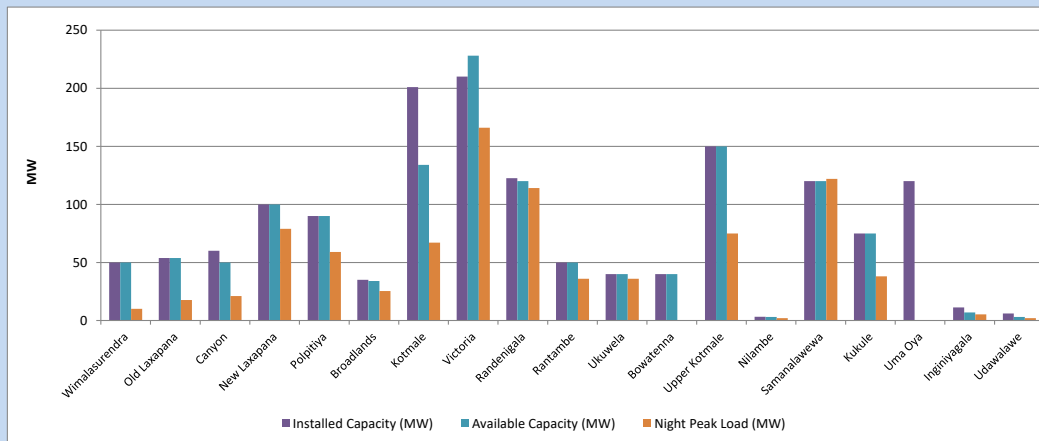


Available Generation is estimated based on plant availability at 6.00am on
Broadlands power plant is operating in the Commissioning Stage

May 14, 2024

8. Major Hydro Plant Loading at Night Peak

May 13, 2024



Plant availability is recorded at 6.00 am on
Broadlands power plant is operating in the Commissioning Stage

May 14, 2024

9. Summary of Major Plant performance

Table 05

Plant	Maximum Available Total Capacity	Plant Availability	Night peak Load	Plant Dispatch
	(MW)	(MW)	(MW)	(MWh)
Wimalasurendra	50	50	10	161
Old Laxapana	54	54	18	422
Canyon	60	50	21	399
New Laxapana	100	100	79	1,239
Polpitiya	90	90	59	800
Broadlands	35	34	25	182
Kotmale	201	134	67	100
Victoria	210	228	166	1,629
Randenigala	123	120	114	973
Rantambe	50	50	36	524
Ukuwela	40	40	36	544
Bowatenna	40	40	0	1
Upper Kotmale	150	150	75	1,549
Nilambe	3	3	2	30
Samanalawewa	120	120	122	1,553
Kukule	75	75	38	1,463
Uma Oya (Testing)	120	0	0	0
Inginiyagala	11	7	5	126
Udawalawe	6	3	2	77
Puttalam Coal I	270	270	270	6,427
Puttalam Coal II	270	270	270	6,447
Puttalam Coal III	270	270	270	6,441
KPS Small GTs	54	0	0	0
KPS GT 7	115	115	0	0
KCCP	165	147	144	3,264
Sapugaskanda A	70	32	32	680
Sapugaskanda B	72	63	63	1,390
Uthura Janani	22	16	16	302
Barge CEB	62	60	59	1,127
CEB-Hambantota	30	19	18	113
CEB-Mathugama	20	10	9	61
ACE Matara	24	0	0	0
Asia Power	50	0	0	0
KCCPS -2	163	100	107	1,048
West Coast	270	0	0	0
Nothern Power	36	0	0	0
ACE Embilipitiya	93	0	0	0
Total	3,594	2,720	2,349	43,750

Note-

Plant availability is the availability recorded at 6 am on

May 14, 2024

Installed Capacity is sourced from CEB Annual Report- 2022

10. Contribution to the Night Peak in MW

May 13, 2024

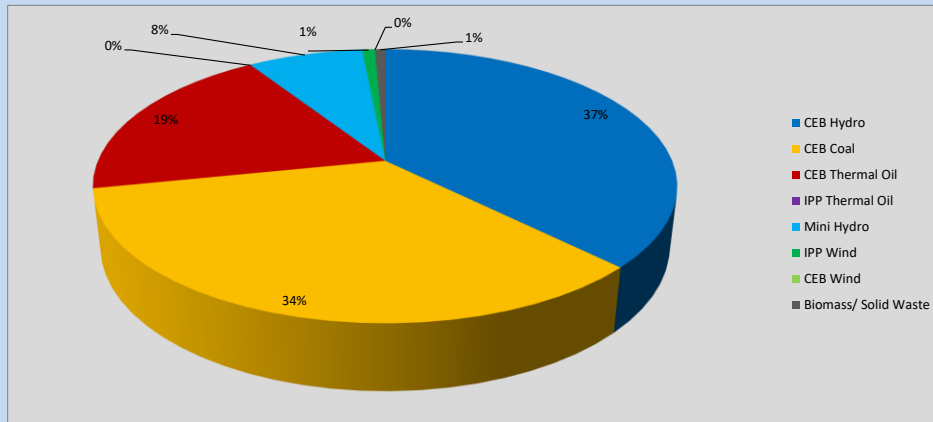


Table 06

CEB Hydro	879	MW
CEB Coal	810	MW
CEB Thermal Oil	448	MW
IPP Thermal Oil	0	MW
Mini Hydro (Telemetered)	180	MW
IPP Wind	20	MW
CEB Wind	0	MW
Biomass/ Solid Waste	16	MW

Recorded Peak Demand Data

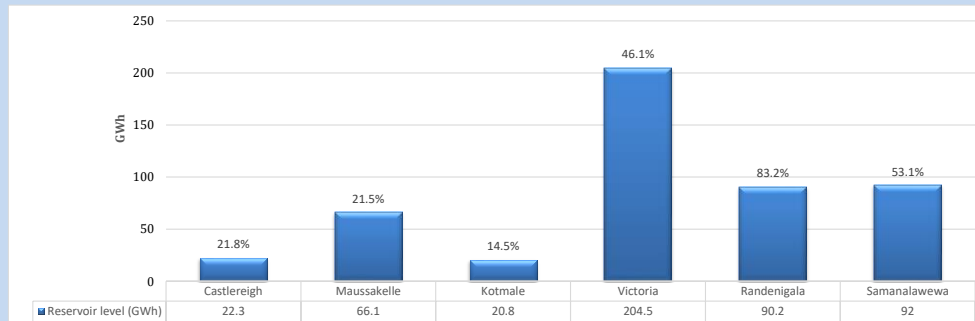
Table 07

Night Peak*	2,353	MW
Day Peak Maximum Demand	2,267	MW
Day Peak Minimum Demand	1,649	MW
Off Peak Minimum Demand	1,308	MW

Above figures are excluding contribution from roof top solar, non telemetered solar and mini hydro plants

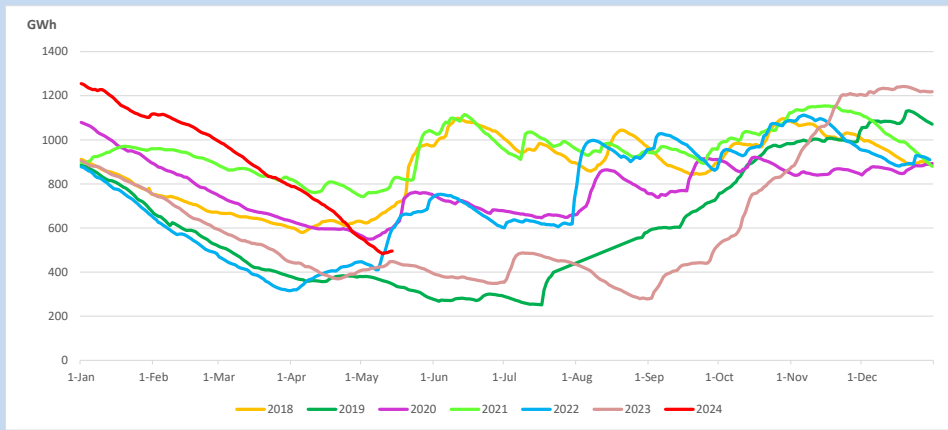
Reservoir Levels -

as at 06.00 Hr on May 14, 2024

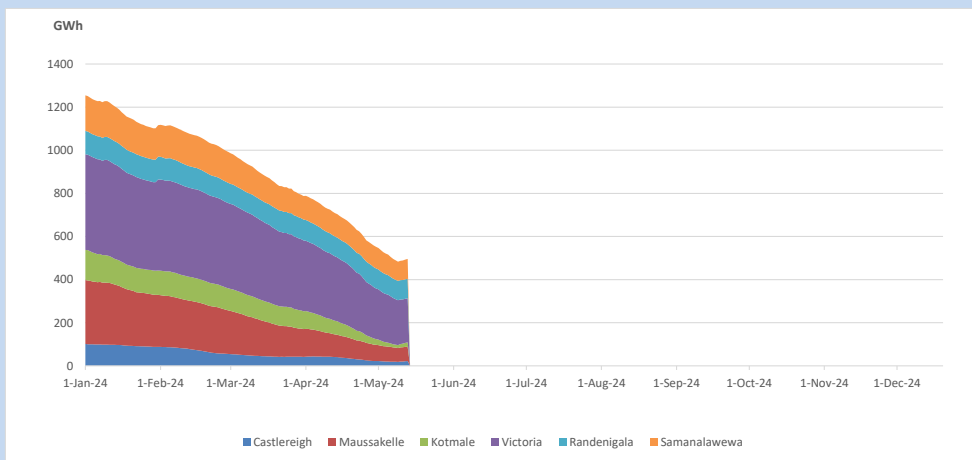


Total Reservoir Level 495.9 GWh
% of Total capacity 38.8%

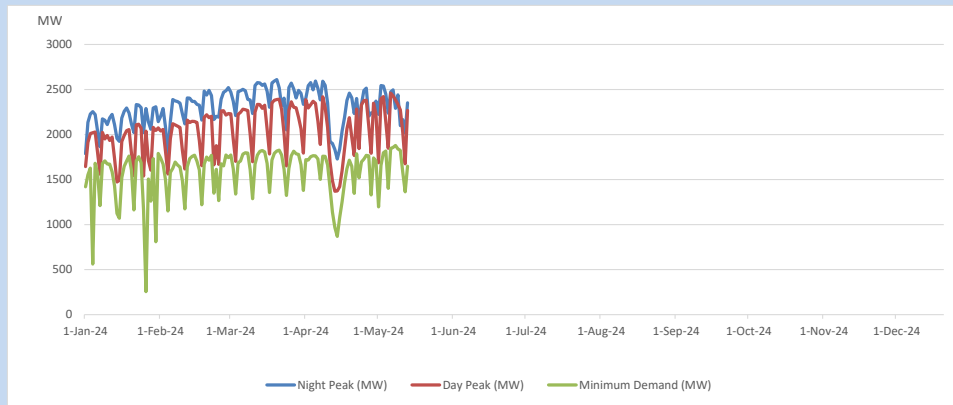
11. Comparison of Total Reservoir Storage Levels with Past Years



12. Variation of Major Hydro Reservoir Levels in the current year (GWh)



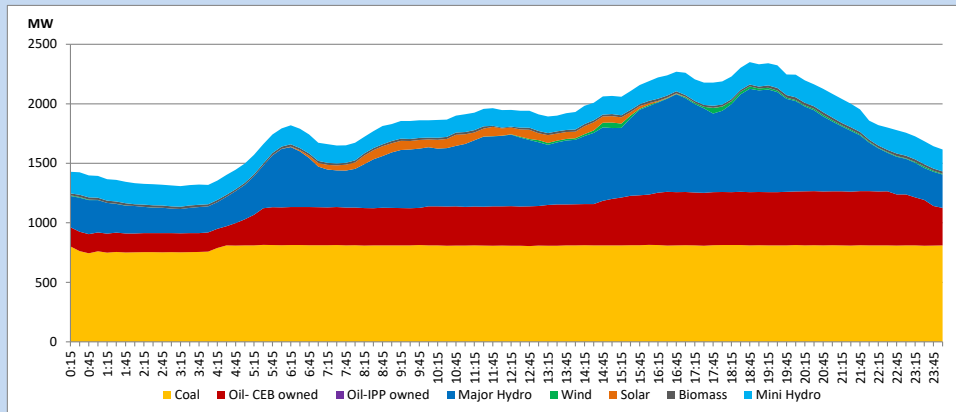
13. Variation of Demand during the current year



The above figures are excluding contribution from roof top solar, non telemetered solar and mini hydro plants

14. Daily Load Curve

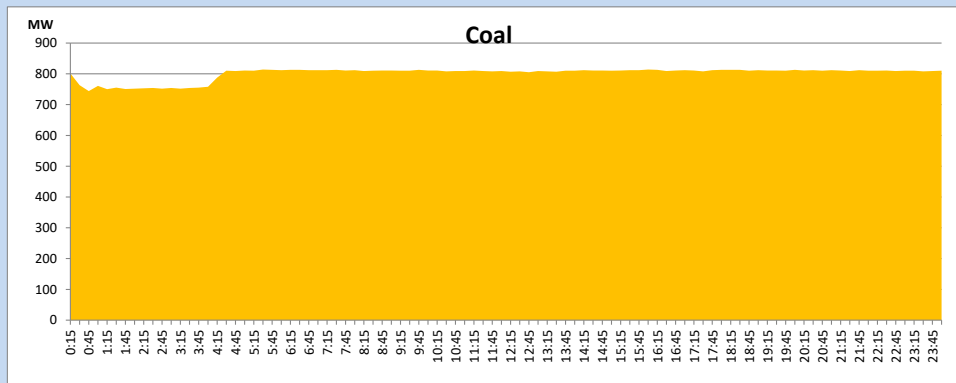
May 13, 2024



Solar and wind data is based on Telemetered Power Stations only

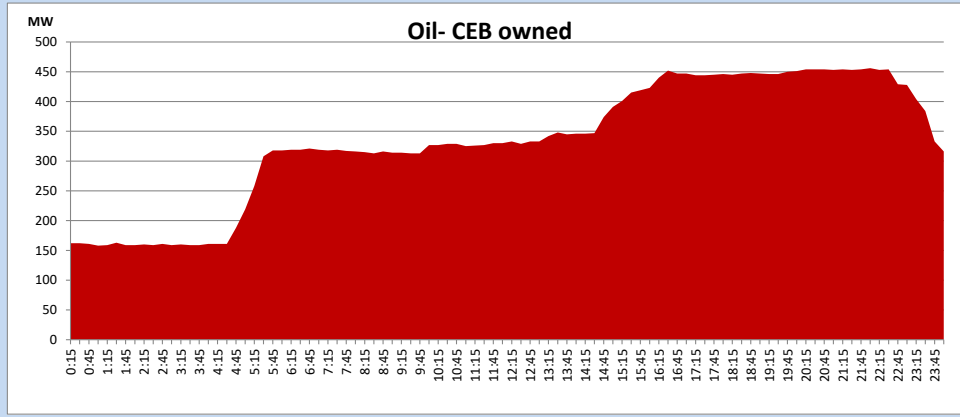
Coal Generation during

May 13, 2024



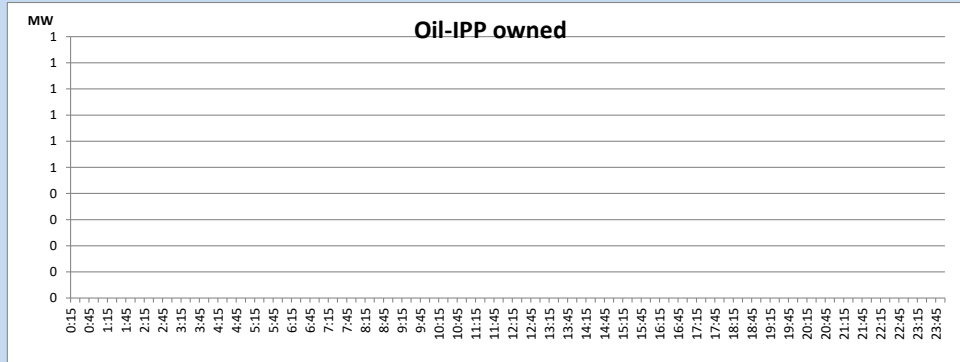
CEB Oil Plant Generation during

May 13, 2024



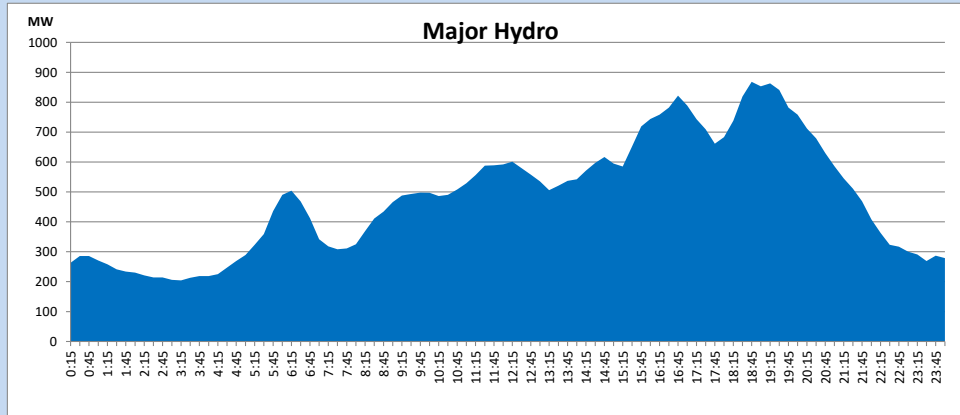
IPP Oil Plant Generation during

May 13, 2024



Major Hydro Generation during

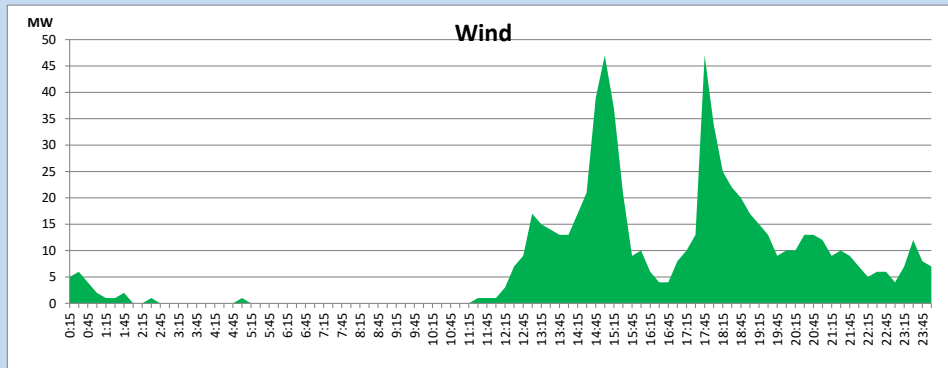
May 13, 2024



Wind Generation during

May 13, 2024

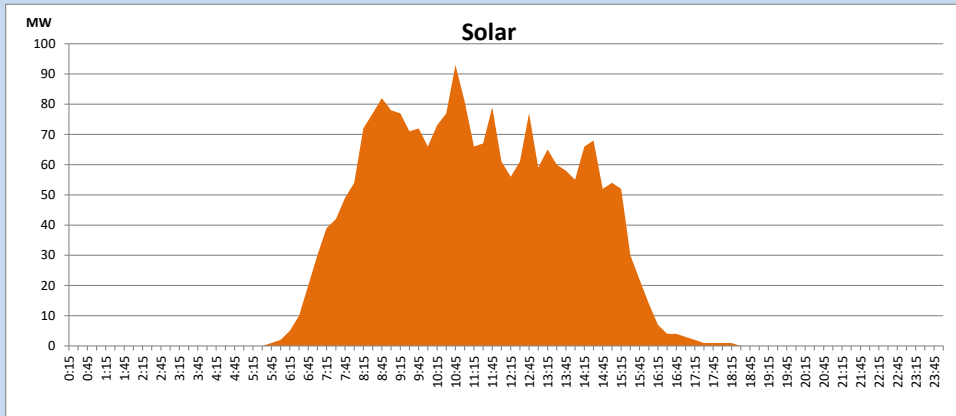
Based on Telemetered Power Stations only



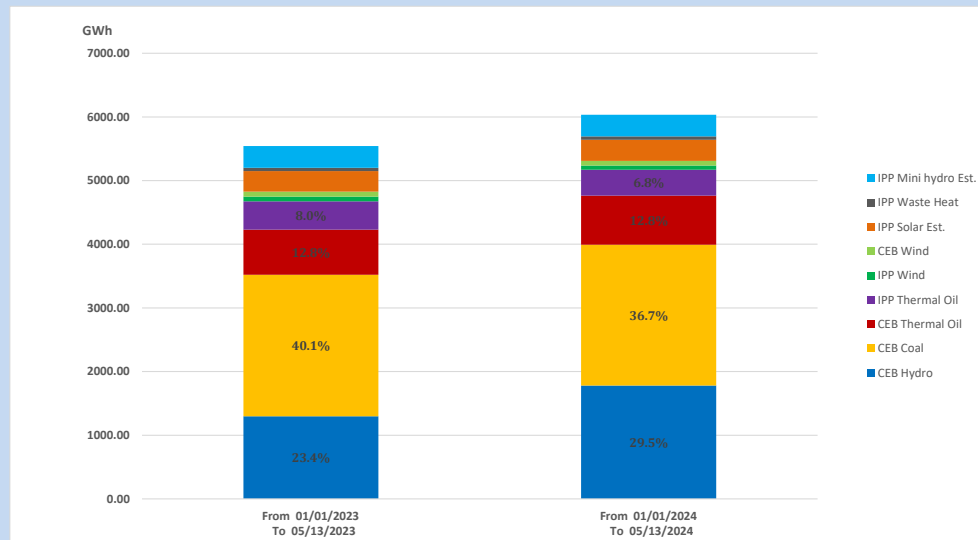
Solar Generation during

May 13, 2024

Based on Telemetered Power Stations only



15. Cumulative Dispatch Comparison with Last Year



Cumulative dispatch

From 01/01/2023 To 05/13/2023

5542 GWh

From 01/01/2024 To 05/13/2024

6035 GWh

The above figures are including contribution from roof top solar, non telemetered solar and mini hydro plants)

Unserviced energy due to power cuts has been excluded in 2023

Thermal Plant Fuel types

Table 08

Power Station	Primary Fuel
CEB Thermal	
Sapugaskanda 1	Heavy Fuel
Sapugaskanda 2	Heavy Fuel
Kelanitissa Small Gas Turbines	Auto Diesel
GT 7 - Kelanitissa	Auto Diesel
Kelanitissa CCY	Naphtha or Diesel
Lakvijaya 1	Coal
Lakvijaya 2	Coal
Lakvijaya 3	Coal
Uthuru Janani	Heavy Fuel
Barge CEB	Heavy Fuel
KCCPS -2	Auto Diesel

Power Station	Primary Fuel
Private Thermal	
West Coast	Auto Diesel / Heavy Fuel

Major Incidents reported during the day

May 13, 2024

1) Nil.