

Generation and Reservoirs Statistics

May 12, 2024



PUBLIC UTILITIES COMMISSION OF SRI LANKA

1. Daily Generation Mix in MWh

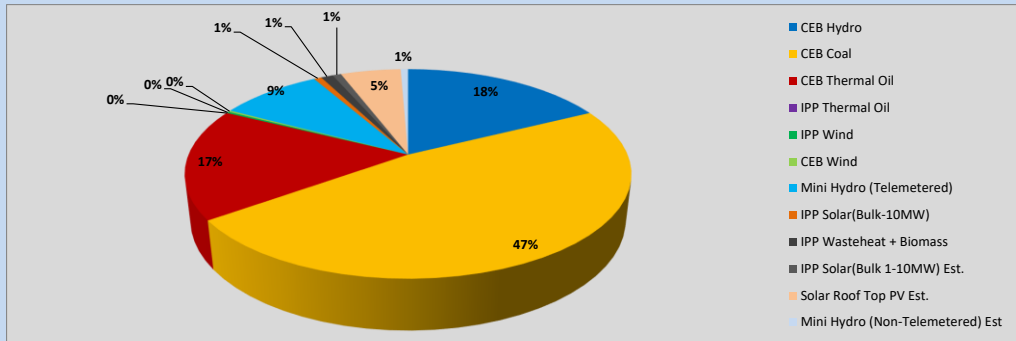


Table 01

	Generation (MWh)
CEB Hydro	7,225
CEB Coal	19,402
CEB Thermal Oil	7,041
IPP Thermal Oil	-
IPP Wind	101
CEB Wind	96
Mini Hydro (Telemetered)	3,634
IPP Solar (Bulk)	266
IPP Waste heat + Biomass	425
Total Generation (Excluding estimated figures)	38,190
* Estimated unserved energy	0
* Estimated Mini Hydro (Non telemetered)	262
* Estimated IPP Solar PV (Bulk 1-10MW)	304
* Estimated Solar Roof Top PV	2130
Total Generation (Including estimated figures)	40,886

* Estimated figures of CEB generation report

Table 02

	Installed Capacity (MW)
CEB Hydro	1530
CEB Coal	810
CEB Thermal Oil	773.1
IPP Thermal Oil (West Coast)	270
IPP Wind	148
CEB Wind	100
Mini Hydro	416
IPP Waste heat + Biomass	50
IPP Solar	110
Rooftop Solar (Ordinary)	250
Rooftop Solar (LT Bulk)	234
Rooftop Solar (HT Bulk)	56

Data Source - Monthly Review Report [Jan-2024]

2. Cumulative Dispatch

Following data excludes the contribution from roof top solar, non telemetered solar and mini hydro plants

Table 03 - Current Month

Category	Dispatch (GWh)	
CEB Hydro	128	22.23%
CEB Coal	233	40.36%
CEB Thermal Oil	137	23.74%
IPP Thermal	0	0.00%
SPP Wind	6	1.05%
CEB Wind	9	1.58%
Mini Hydro *	26	4.52%
IPP Solar *	34	5.83%
IPP Waste heat + BMP	4	0.68%
Total	577	

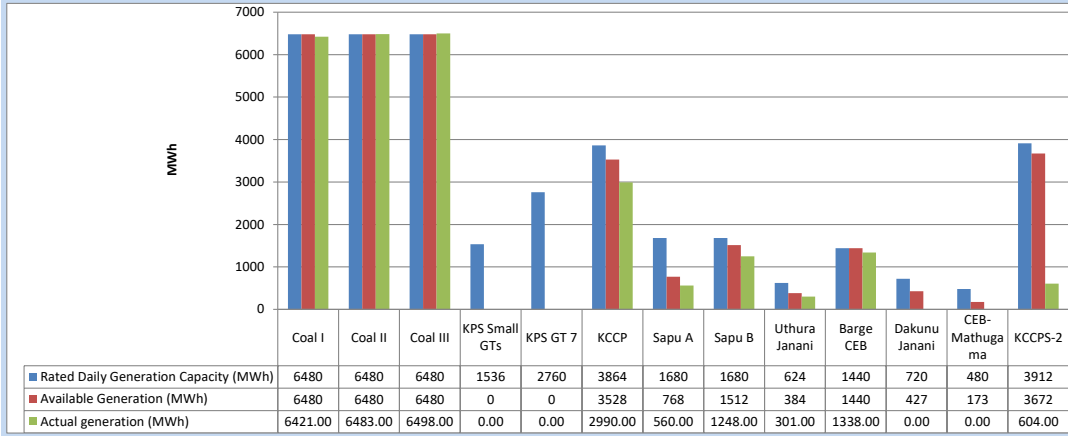
Table 04 - Current Year

Category	Dispatch (GWh)	
CEB Hydro	1,769	29.55%
CEB Coal	2,194	36.63%
CEB Thermal Oil	762	12.73%
IPP Thermal	408	6.81%
SPP Wind	64	1.06%
CEB Wind	72	1.21%
Mini Hydro *	337	5.62%
IPP Solar *	330	5.50%
IPP Waste heat	53	0.88%
Total	5,988	

*Including estimated contribution from non telemetered plants

3. CEB owned Thermal Plant Dispatch

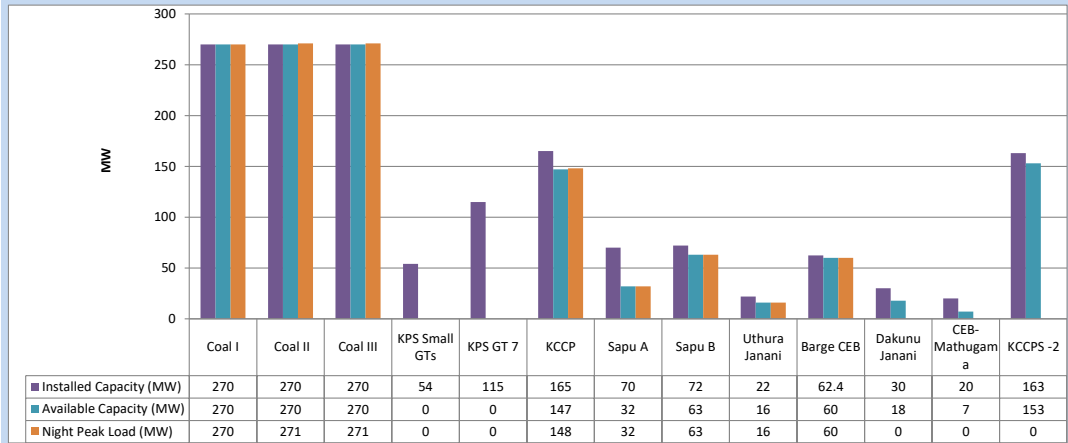
May 12, 2024



Available Generation is estimated based on plant availability at 6.00am on

May 13, 2024

4. CEB owned Thermal Plant Loading at the Night Peak

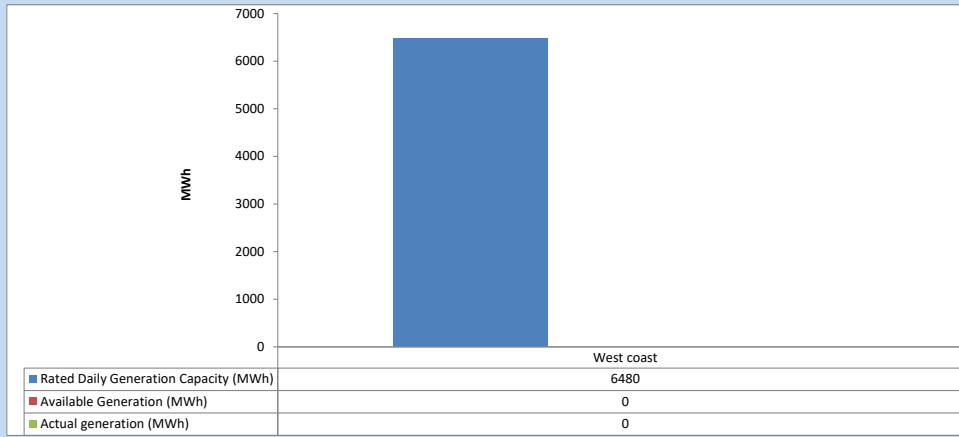


Plant availability is recorded at 6.00 am on

May 13, 2024

5. IPP owned Thermal Plant Dispatch

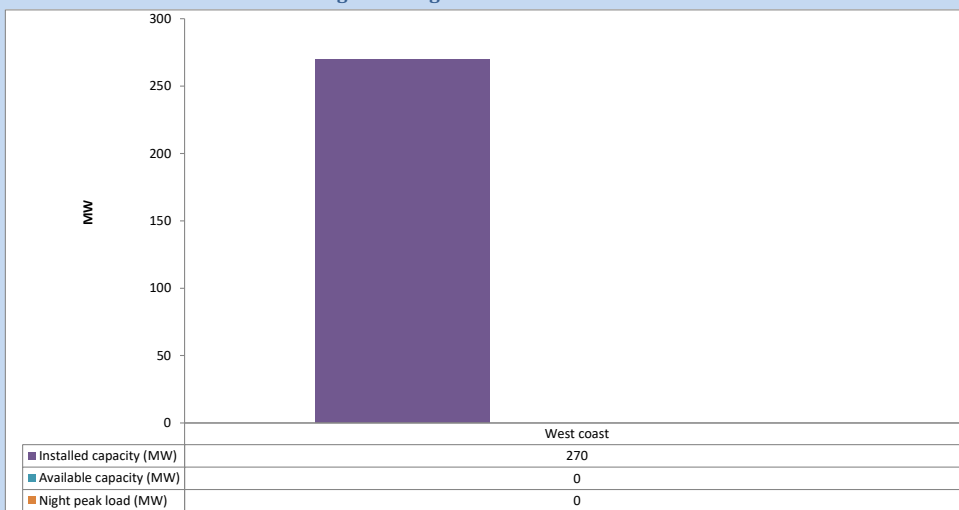
May 12, 2024



Available Generation is estimated based on plant availability at 6.00am on

May 13, 2024

6. IPP owned Thermal Plant Loading at the Night Peak

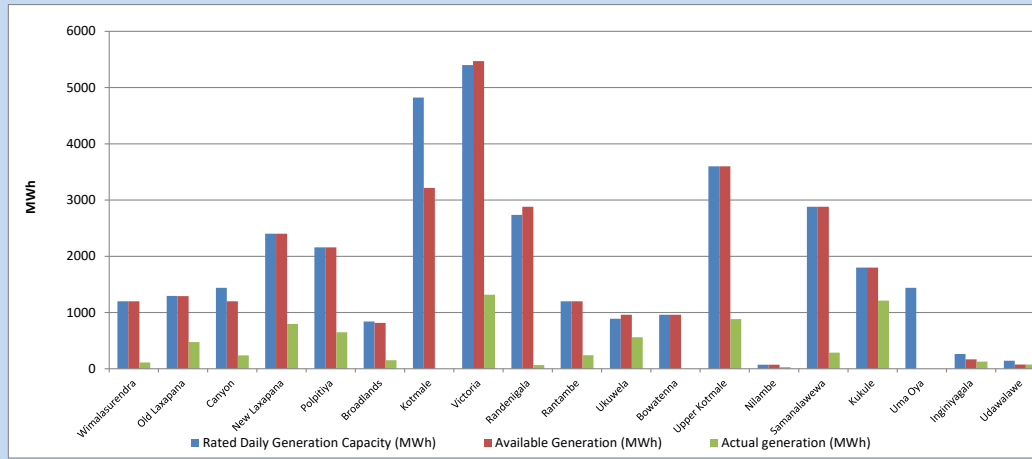


Plant availability is recorded at 6.00 am on

May 13, 2024

7. Major Hydro Plant Dispatch

May 12, 2024

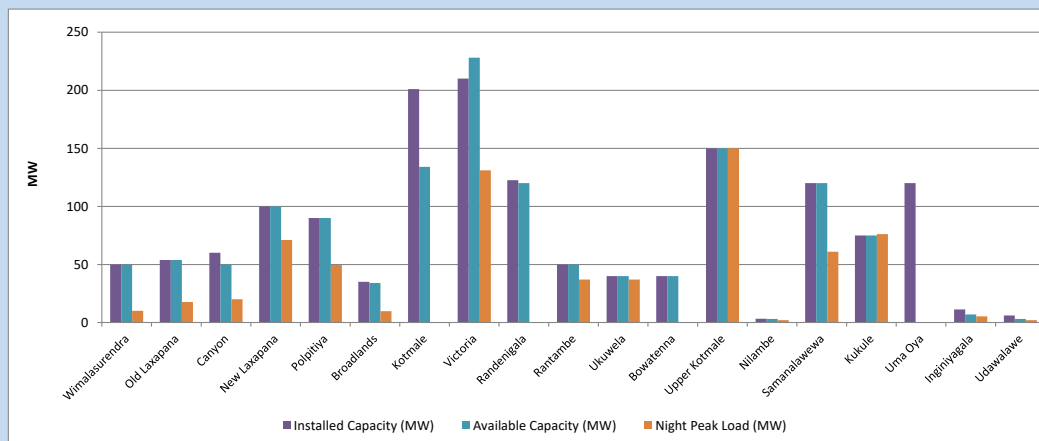


Available Generation is estimated based on plant availability at 6.00am on
Broadlands power plant is operating in the Commissioning Stage

May 13, 2024

8. Major Hydro Plant Loading at Night Peak

May 12, 2024



Plant availability is recorded at 6.00 am on
Broadlands power plant is operating in the Commissioning Stage

May 13, 2024

9. Summary of Major Plant performance

Table 05

Plant	Maximum Available Total Capacity	Plant Availability	Night peak Load	Plant Dispatch
	(MW)	(MW)	(MW)	(MWh)
Wimalasurendra	50	50	10	112
Old Laxapana	54	54	18	475
Canyon	60	50	20	239
New Laxapana	100	100	71	797
Polpitiya	90	90	50	650
Broadlands	35	34	10	153
Kotmale	201	134	0	0
Victoria	210	228	131	1,317
Randenigala	123	120	0	67
Rantambe	50	50	37	240
Ukuwela	40	40	37	562
Bowatenna	40	40	0	0
Upper Kotmale	150	150	150	884
Nilambe	3	3	2	28
Samanalawewa	120	120	61	287
Kukule	75	75	76	1,211
Uma Oya (Testing)	120	0	0	0
Inginiyagala	11	7	5	127
Udawalawe	6	3	2	76
Puttalam Coal I	270	270	270	6,421
Puttalam Coal II	270	270	271	6,483
Puttalam Coal III	270	270	271	6,498
KPS Small GTs	54	0	0	0
KPS GT 7	115	0	0	0
KCCP	165	147	148	2,990
Sapugaskanda A	70	32	32	560
Sapugaskanda B	72	63	63	1,248
Uthura Janani	22	16	16	301
Barge CEB	62	60	60	1,338
CEB-Hambantota	30	18	0	0
CEB-Mathugama	20	7	0	0
ACE Matara	24	0	0	0
Asia Power	50	0	0	0
KCCPS -2	163	153	0	604
West Coast	270	0	0	0
Nothern Power	36	0	0	0
ACE Embilipitiya	93	0	0	0
Total	3,594	2,654	2,014	38,190

Note-

Plant availability is the availability recorded at 6 am on

May 13, 2024

Installed Capacity is sourced from CEB Annual Report- 2022

10. Contribution to the Night Peak in MW

May 12, 2024

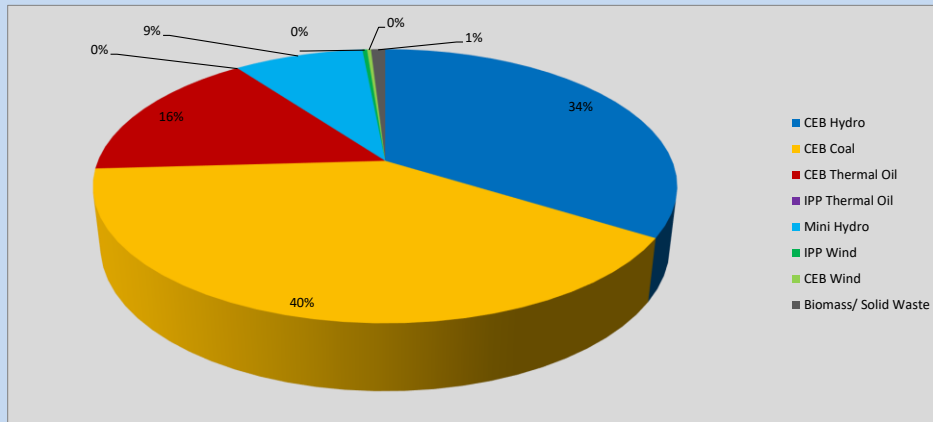


Table 06

CEB Hydro	683	MW
CEB Coal	812	MW
CEB Thermal Oil	319	MW
IPP Thermal Oil	0	MW
Mini Hydro (Telemetered)	173	MW
IPP Wind	6.2	MW
CEB Wind	5.3	MW
Biomass/ Solid Waste	19	MW

Recorded Peak Demand Data

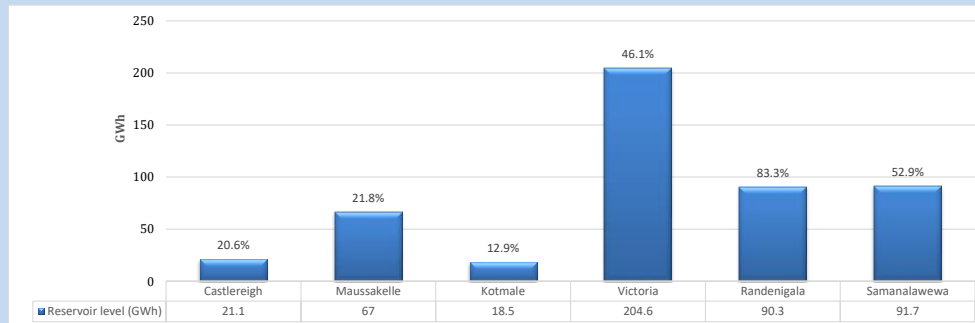
Table 07

Night Peak*	2,017	MW
Day Peak Maximum Demand	1,676	MW
Day Peak Minimum Demand	1,364	MW
Off Peak Minimum Demand	1,426	MW

Above figures are excluding contribution from roof top solar, non telemetered solar and mini hydro plants

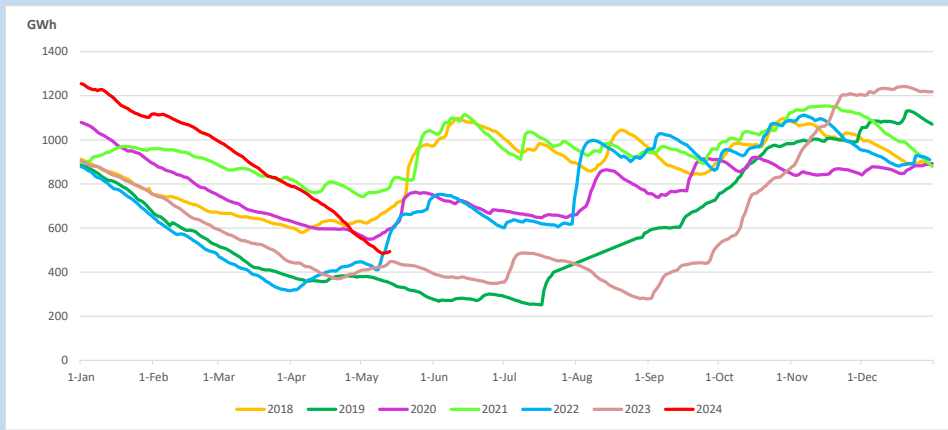
Reservoir Levels -

as at 06.00 Hr on May 13, 2024

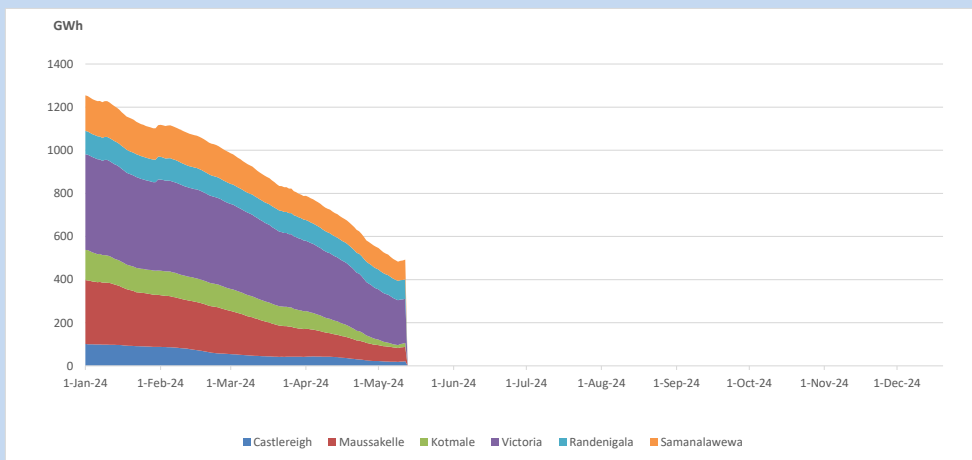


Total Reservoir Level 493.2 GWh
% of Total capacity 38.6%

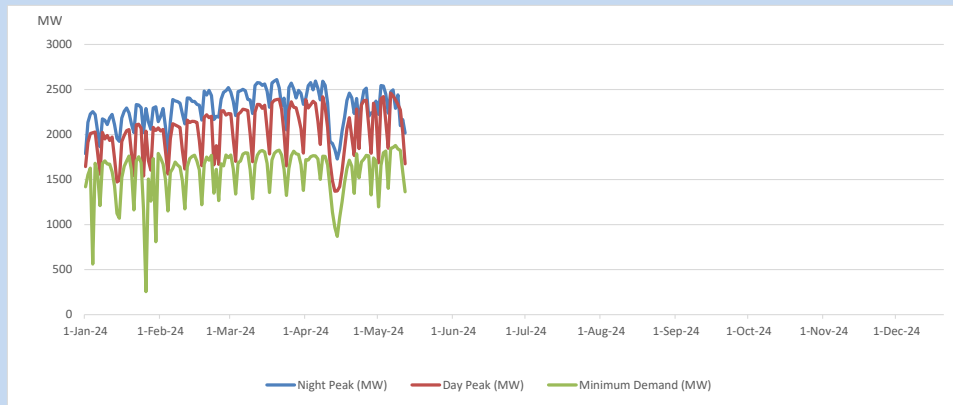
11. Comparison of Total Reservoir Storage Levels with Past Years



12. Variation of Major Hydro Reservoir Levels in the current year (GWh)



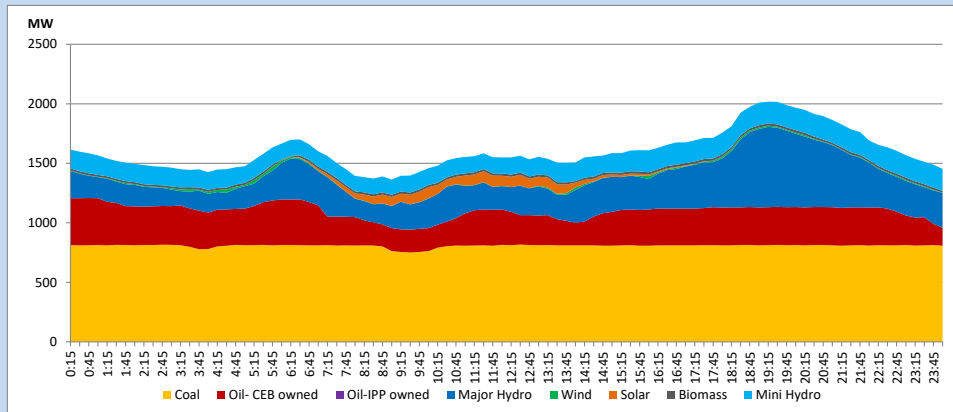
13. Variation of Demand during the current year



The above figures are excluding contribution from roof top solar, non telemetered solar and mini hydro plants

14. Daily Load Curve

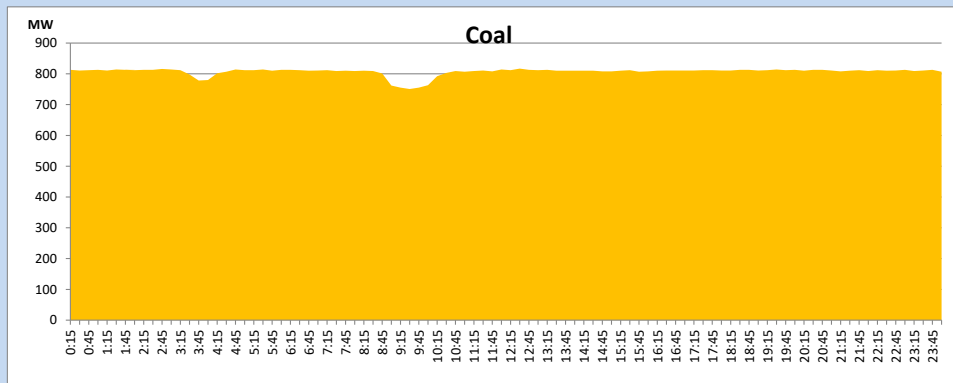
May 12, 2024



Solar and wind data is based on Telemetered Power Stations only

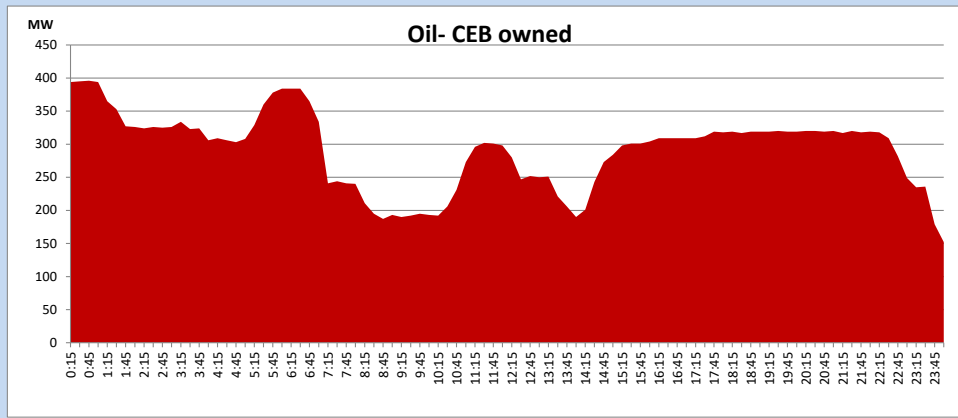
Coal Generation during

May 12, 2024



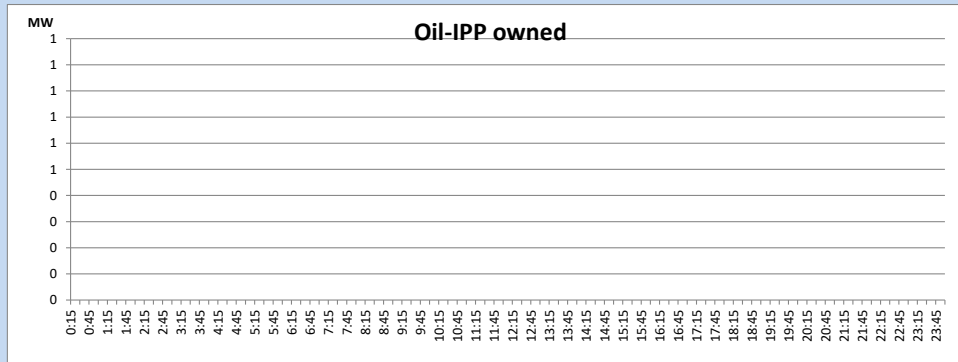
CEB Oil Plant Generation during

May 12, 2024



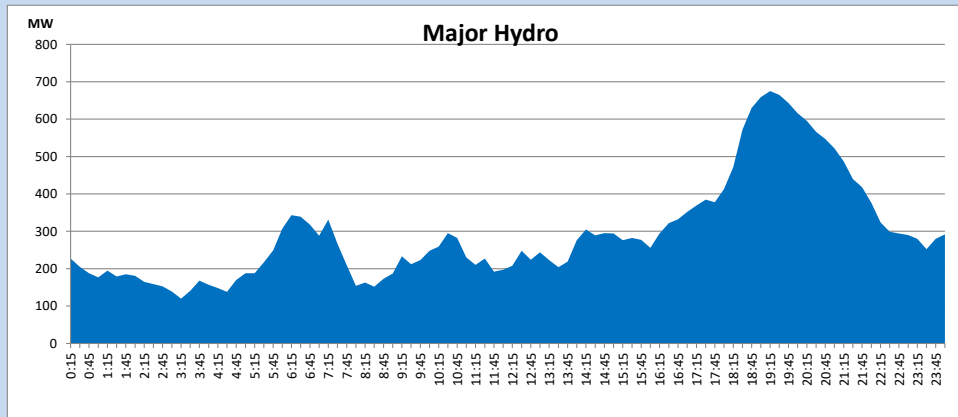
IPP Oil Plant Generation during

May 12, 2024



Major Hydro Generation during

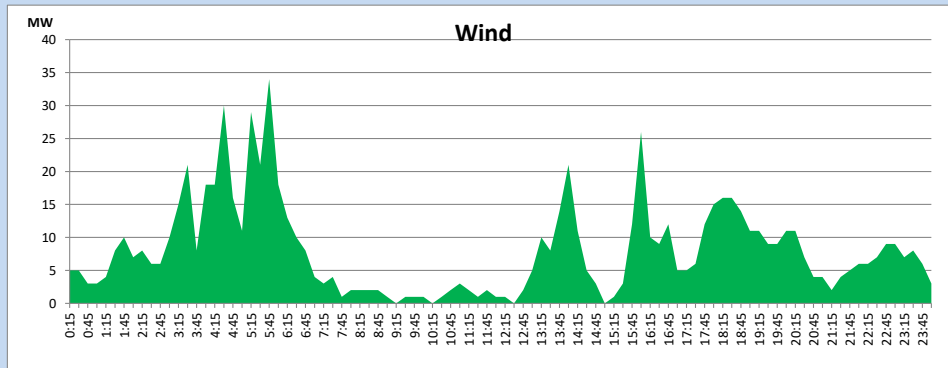
May 12, 2024



Wind Generation during

May 12, 2024

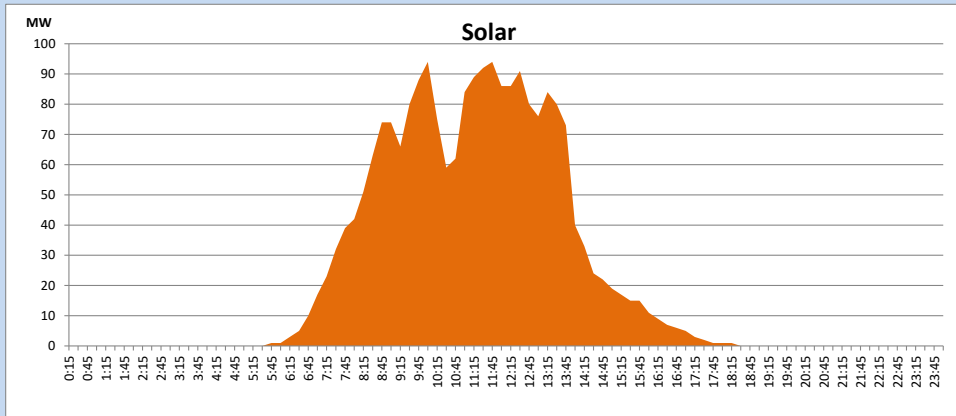
Based on Telemetered Power Stations only



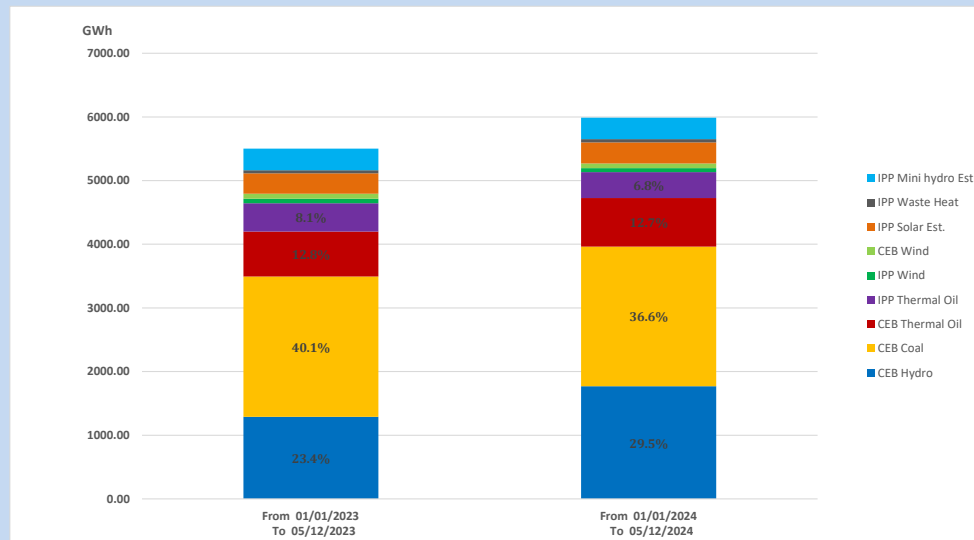
Solar Generation during

May 12, 2024

Based on Telemetered Power Stations only



15. Cumulative Dispatch Comparison with Last Year



Cumulative dispatch
From 01/01/2023 To 05/12/2023
From 01/01/2024 To 05/12/2024

5501 GWh
5988 GWh

The above figures are including contribution from roof top solar, non telemetered solar and mini hydro plants)
Unserviced energy due to power cuts has been excluded in 2023

Thermal Plant Fuel types

Table 08

Power Station	Primary Fuel
CEB Thermal	
Sapugaskanda 1	Heavy Fuel
Sapugaskanda 2	Heavy Fuel
Kelanitissa Small Gas Turbines	Auto Diesel
GT 7 - Kelanitissa	Auto Diesel
Kelanitissa CCY	Naphtha or Diesel
Lakvijaya 1	Coal
Lakvijaya 2	Coal
Lakvijaya 3	Coal
Uthuru Janani	Heavy Fuel
Barge CEB	Heavy Fuel
KCCPS -2	Auto Diesel

Power Station	Primary Fuel
Private Thermal	
West Coast	Auto Diesel / Heavy Fuel

Major Incidents reported during the day

May 12, 2024

1) Athurugiriya - Thulhiriya - Polpitiya 132kV cct and Athurugiriya - Thulhiriya - New Polpitiya 132kV cct tripped and A/R from all ends except Thulhiriya end at 13:18hrs due to the operation of distance protection.

2) Horana - Mathugama 132kV cct tripped from Horana end and tripped and A/R from Mathugama end at 14:15hrs due to the operation of distance protection. At the same time, Kaluthara - Mathugama 132kV cct tripped from Mathugama end and tripped and A/R from Kaluthara end due to the operation of differential protection. This caused Kukula both units to be tripped, rejecting 78MW from the system and Ambalangoda, Galle and Mathugama GSS to be dead, due to incoming supply failure. Horana Mathugama and Kaluthara Mathugama both ccts were normalized by 14:23hrs. All feeders of affected GSS were normalized by 14:27hrs. Kulula both units resumed generation by 15:03hrs.