

Generation and Reservoirs Statistics

May 11, 2024



PUBLIC UTILITIES COMMISSION OF SRI LANKA

1. Daily Generation Mix in MWh

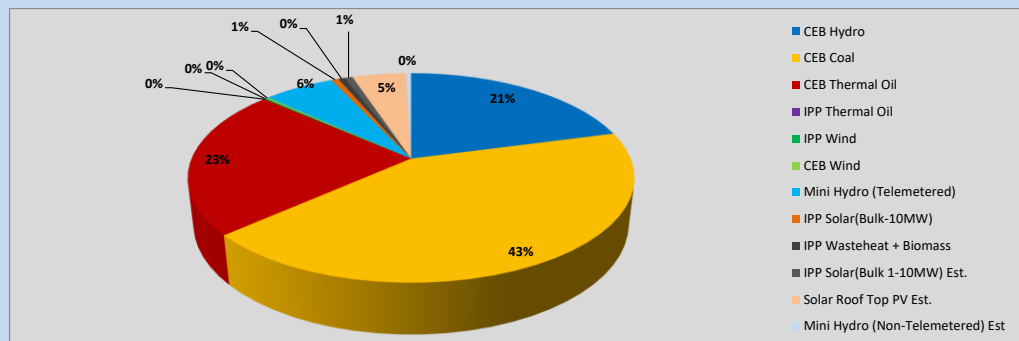


Table 01

	Generation (MWh)
CEB Hydro	9,524
CEB Coal	19,460
CEB Thermal Oil	10,530
IPP Thermal Oil	-
IPP Wind	95
CEB Wind	91
Mini Hydro (Telemetered)	2,810
IPP Solar (Bulk)	281
IPP Waste heat + Biomass	263
Total Generation (Excluding estimated figures)	43,054
* Estimated unserved energy	0
* Estimated Mini Hydro (Non telemetered)	203
* Estimated IPP Solar PV (Bulk 1-10MW)	309
* Estimated Solar Roof Top PV	2130
Total Generation (Including estimated figures)	45,696

* Estimated figures of CEB generation report

Table 02

	Installed Capacity (MW)
CEB Hydro	1530
CEB Coal	810
CEB Thermal Oil	773.1
IPP Thermal Oil (West Coast)	270
IPP Wind	148
CEB Wind	100
Mini Hydro	416
IPP Waste heat + Biomass	50
IPP Solar	110
Rooftop Solar (Ordinary)	250
Rooftop Solar (LT Bulk)	234
Rooftop Solar (HT Bulk)	56

Data Source - Monthly Review Report [Jan-2024]

2. Cumulative Dispatch

Following data excludes the contribution from roof top solar, non telemetered solar and mini hydro plants

Table 03 - Current Month

Category	Dispatch (GWh)	
CEB Hydro	121	22.58%
CEB Coal	213	39.81%
CEB Thermal Oil	130	24.24%
IPP Thermal	0	0.00%
SPP Wind	6	1.11%
CEB Wind	9	1.69%
Mini Hydro *	22	4.14%
IPP Solar *	31	5.77%
IPP Waste heat + BMP	4	0.65%
Total	536	

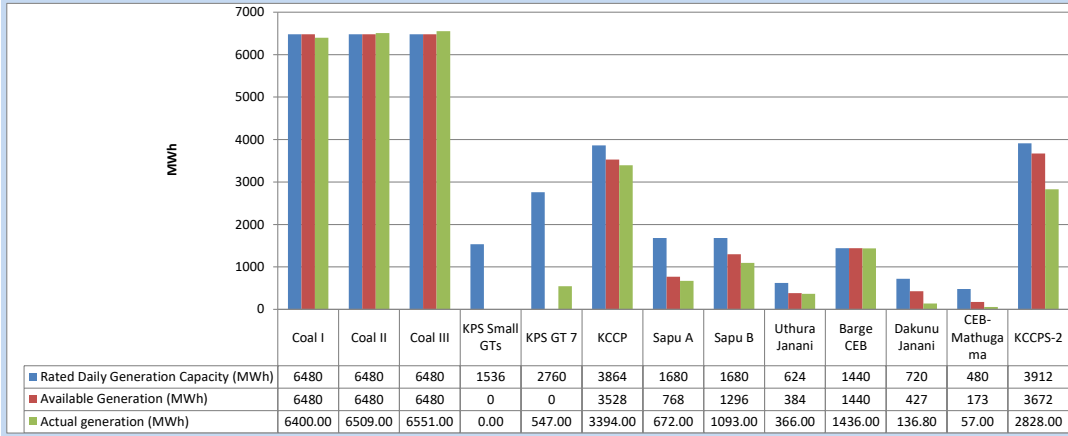
Table 04 - Current Year

Category	Dispatch (GWh)	
CEB Hydro	1,762	29.63%
CEB Coal	2,174	36.56%
CEB Thermal Oil	755	12.70%
IPP Thermal	408	6.85%
SPP Wind	63	1.07%
CEB Wind	72	1.21%
Mini Hydro *	333	5.60%
IPP Solar *	327	5.50%
IPP Waste heat	53	0.88%
Total	5,947	

*Including estimated contribution from non telemetered plants

3. CEB owned Thermal Plant Dispatch

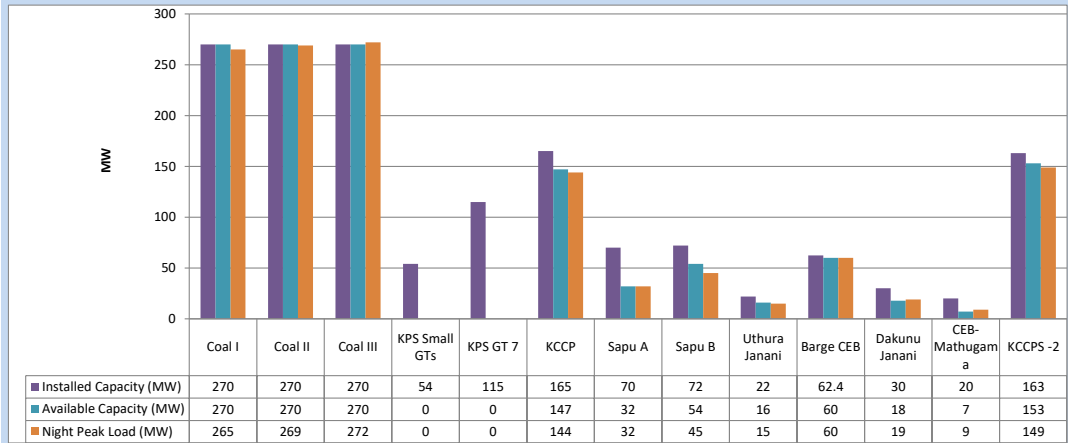
May 11, 2024



Available Generation is estimated based on plant availability at 6.00am on

May 12, 2024

4. CEB owned Thermal Plant Loading at the Night Peak

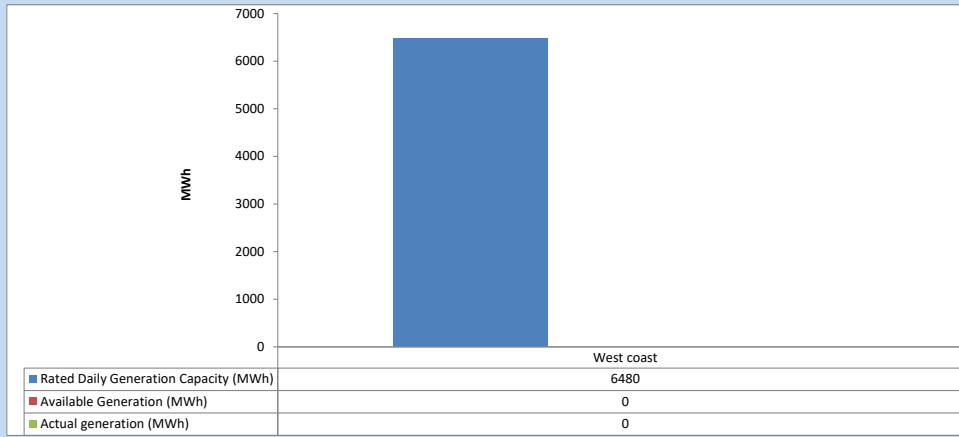


Plant availability is recorded at 6.00 am on

May 12, 2024

5. IPP owned Thermal Plant Dispatch

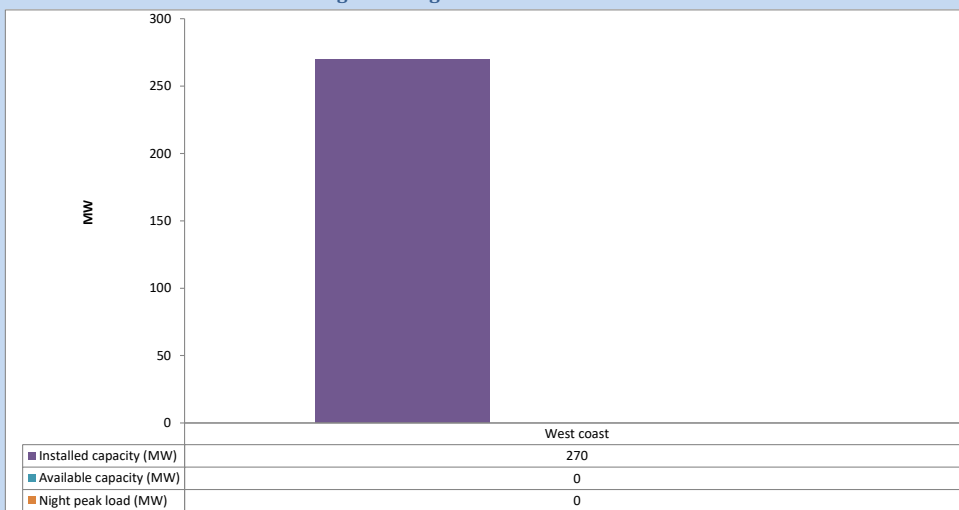
May 11, 2024



Available Generation is estimated based on plant availability at 6.00am on

May 12, 2024

6. IPP owned Thermal Plant Loading at the Night Peak

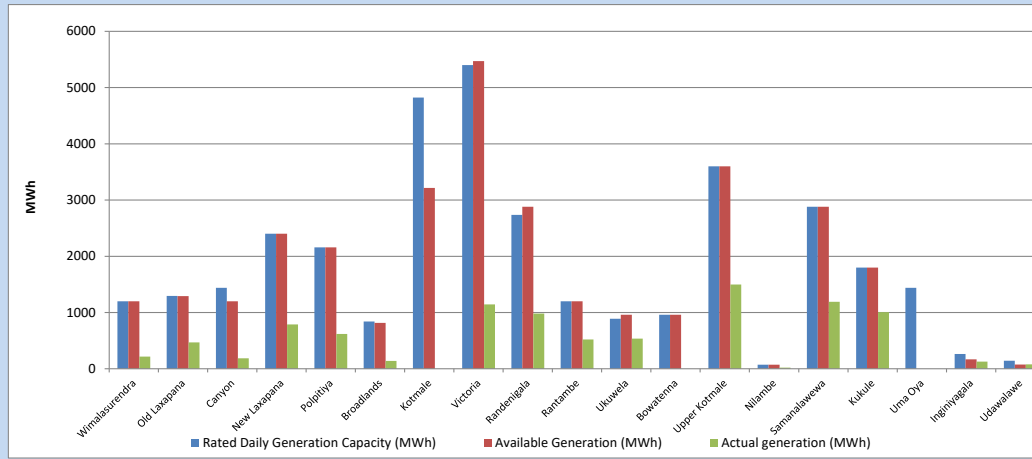


Plant availability is recorded at 6.00 am on

May 12, 2024

7. Major Hydro Plant Dispatch

May 11, 2024

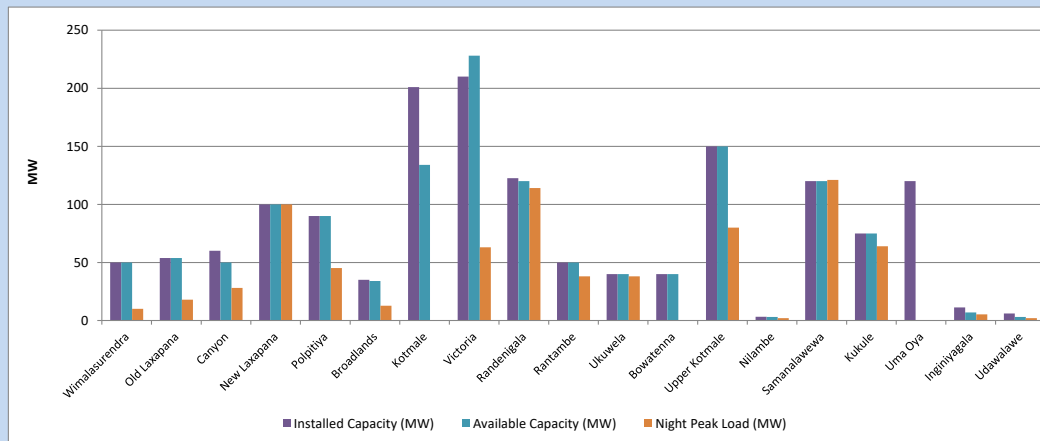


Available Generation is estimated based on plant availability at 6.00am on
Broadlands power plant is operating in the Commissioning Stage

May 12, 2024

8. Major Hydro Plant Loading at Night Peak

May 11, 2024



Plant availability is recorded at 6.00 am on
Broadlands power plant is operating in the Commissioning Stage

May 12, 2024

9. Summary of Major Plant performance

Table 05

Plant	Maximum Available Total Capacity	Plant Availability	Night peak Load	Plant Dispatch
	(MW)	(MW)	(MW)	(MWh)
Wimalasurendra	50	50	10	218
Old Laxapana	54	54	18	468
Canyon	60	50	28	187
New Laxapana	100	100	100	788
Polpitiya	90	90	45	620
Broadlands	35	34	13	140
Kotmale	201	134	0	0
Victoria	210	228	63	1,144
Randenigala	123	120	114	982
Rantambe	50	50	38	522
Ukuwela	40	40	38	537
Bowatenna	40	40	0	0
Upper Kotmale	150	150	80	1,498
Nilambe	3	3	2	19
Samanalawewa	120	120	121	1,192
Kukule	75	75	64	1,007
Uma Oya (Testing)	120	0	0	0
Inginiyagala	11	7	5	126
Udawalawe	6	3	2	77
Puttalam Coal I	270	270	265	6,400
Puttalam Coal II	270	270	269	6,509
Puttalam Coal III	270	270	272	6,551
KPS Small GTs	54	0	0	0
KPS GT 7	115	0	0	547
KCCP	165	147	144	3,394
Sapugaskanda A	70	32	32	672
Sapugaskanda B	72	54	45	1,093
Uthura Janani	22	16	15	366
Barge CEB	62	60	60	1,436
CEB-Hambantota	30	18	19	137
CEB-Mathugama	20	7	9	57
ACE Matara	24	0	0	0
Asia Power	50	0	0	0
KCCPS -2	163	153	149	2,828
West Coast	270	0	0	0
Nothern Power	36	0	0	0
ACE Embilipitiya	93	0	0	0
Total	3,594	2,645	2,164	43,055

Note-

Plant availability is the availability recorded at 6 am on

May 12, 2024

Installed Capacity is sourced from CEB Annual Report- 2022

10. Contribution to the Night Peak in MW

May 11, 2024

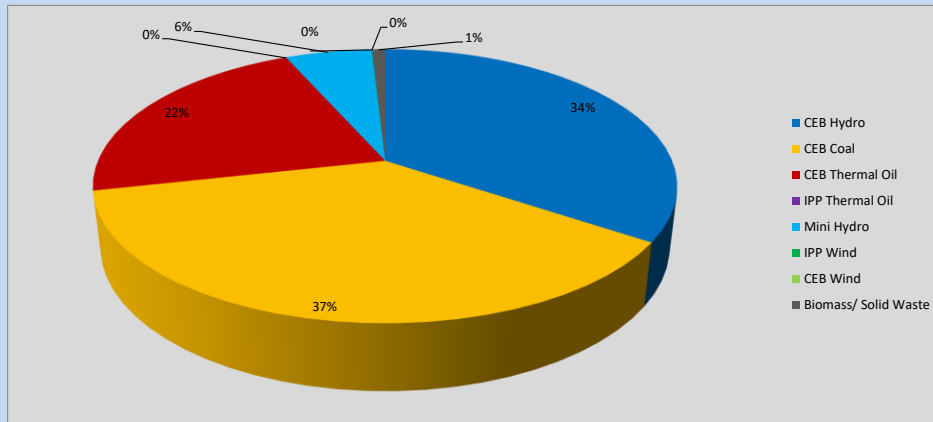


Table 06

CEB Hydro	744	MW
CEB Coal	806	MW
CEB Thermal Oil	473	MW
IPP Thermal Oil	0	MW
Mini Hydro (Telemetered)	124	MW
IPP Wind	0.7	MW
CEB Wind	0	MW
Biomass/ Solid Waste	19	MW

Recorded Peak Demand Data

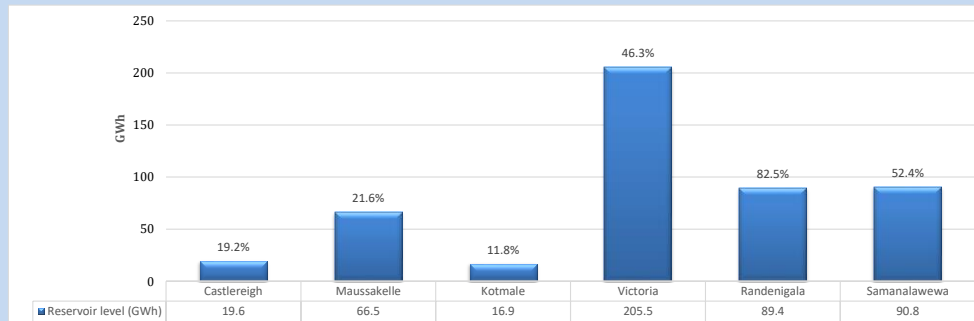
Table 07

Night Peak*	2,167	MW
Day Peak Maximum Demand	2,027	MW
Day Peak Minimum Demand	1,583	MW
Off Peak Minimum Demand	1,443	MW

Above figures are excluding contribution from roof top solar, non telemetered solar and mini hydro plants

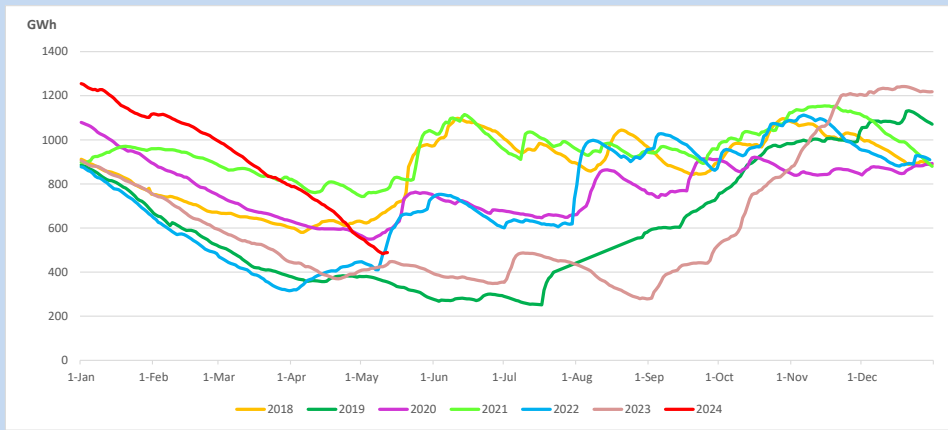
Reservoir Levels -

as at 06.00 Hr on May 12, 2024

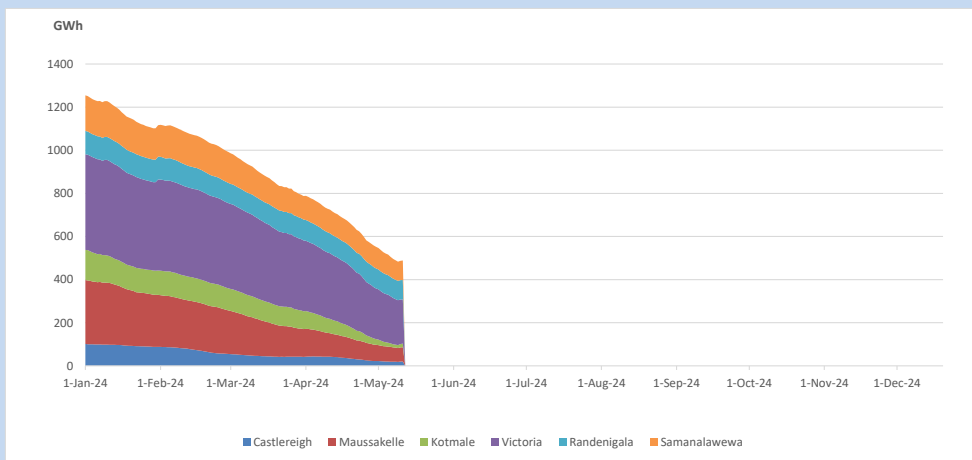


Total Reservoir Level 488.7 GWh
% of Total capacity 38.2%

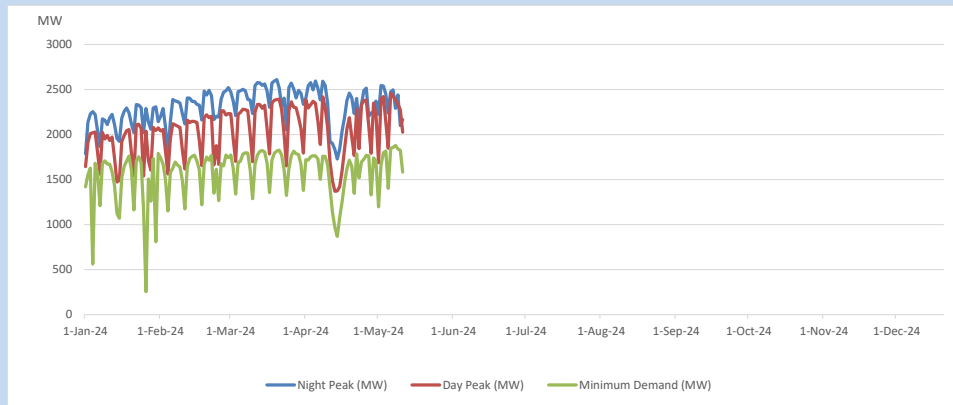
11. Comparison of Total Reservoir Storage Levels with Past Years



12. Variation of Major Hydro Reservoir Levels in the current year (GWh)



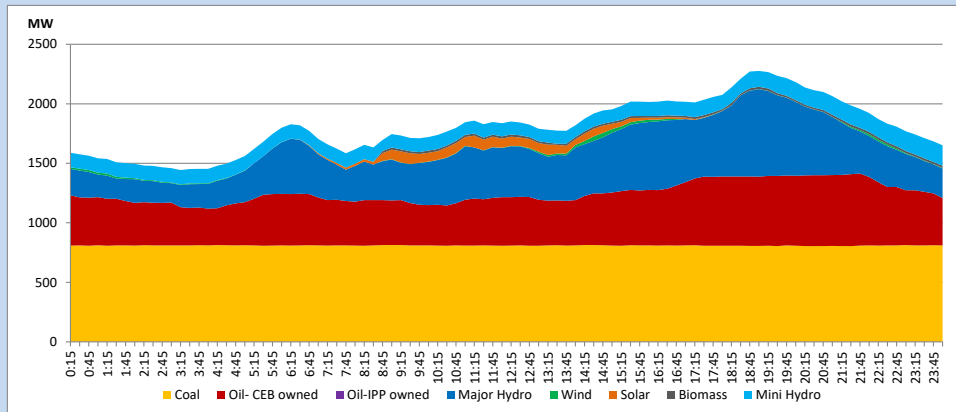
13. Variation of Demand during the current year



The above figures are excluding contribution from roof top solar, non telemetered solar and mini hydro plants

14. Daily Load Curve

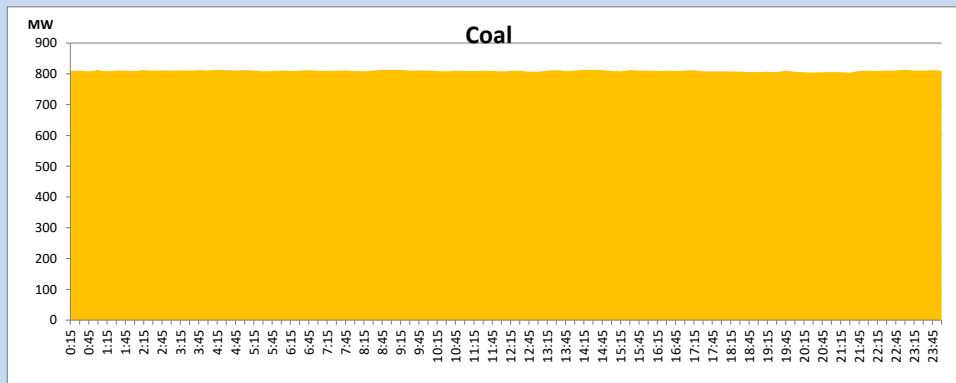
May 11, 2024



Solar and wind data is based on Telemetered Power Stations only

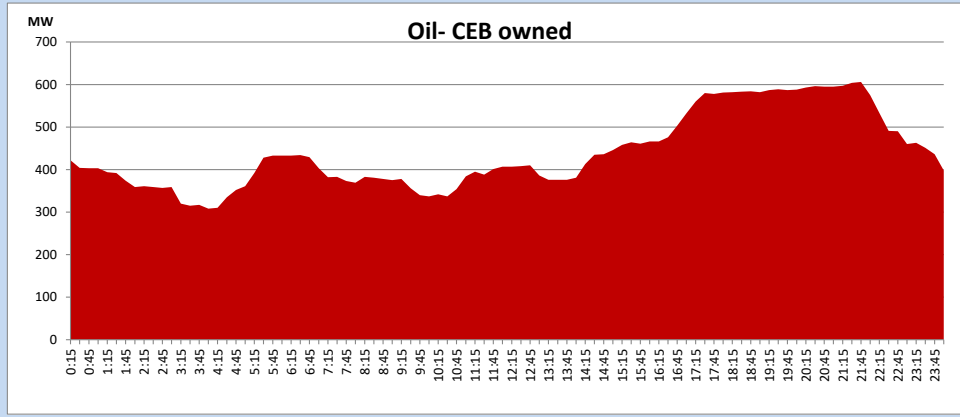
Coal Generation during

May 11, 2024



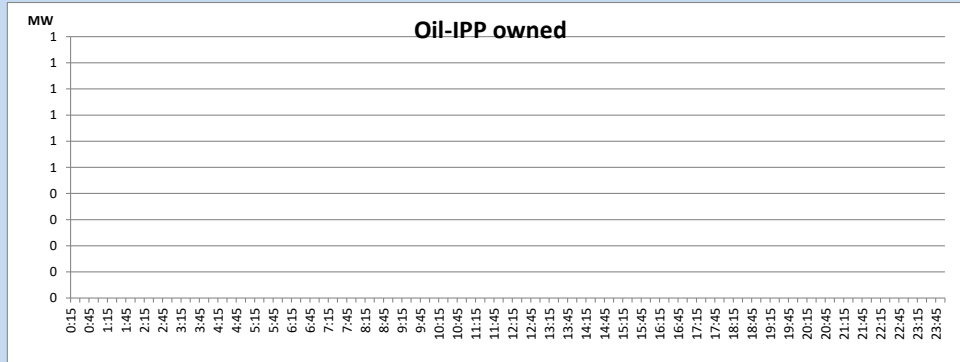
CEB Oil Plant Generation during

May 11, 2024



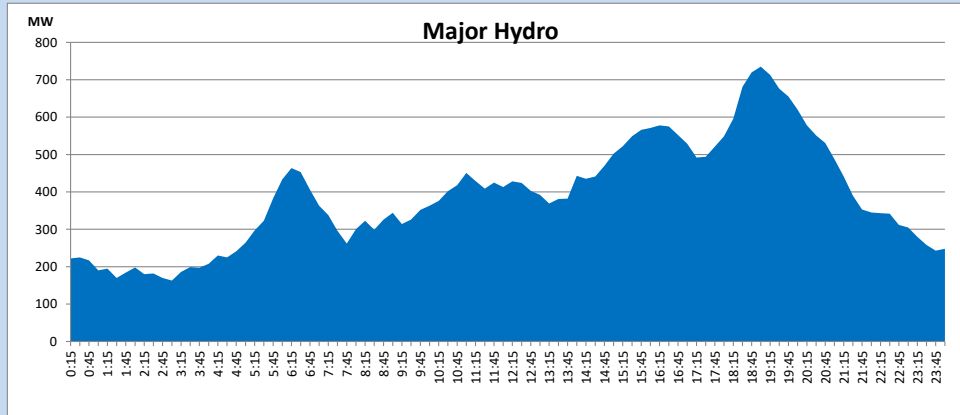
IPP Oil Plant Generation during

May 11, 2024



Major Hydro Generation during

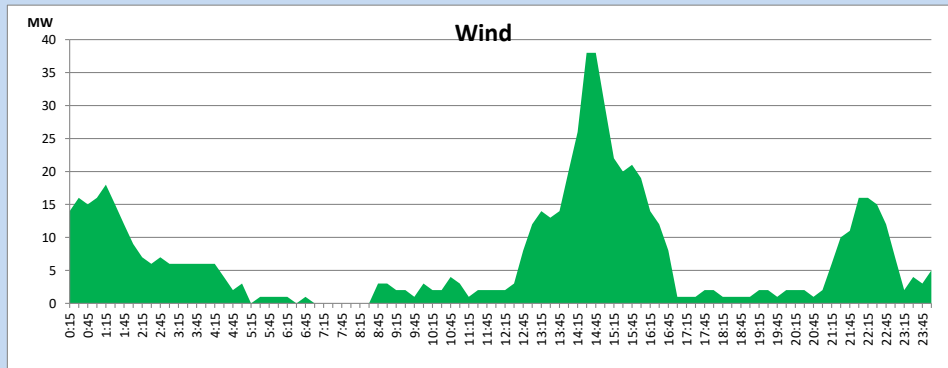
May 11, 2024



Wind Generation during

May 11, 2024

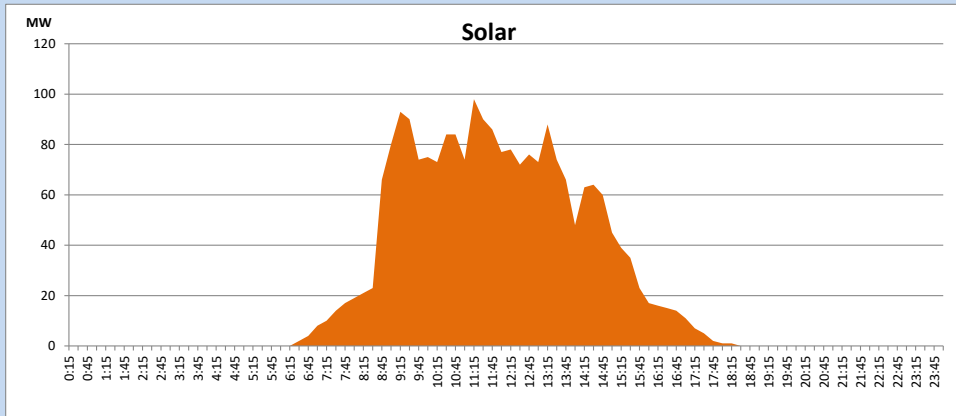
Based on Telemetered Power Stations only



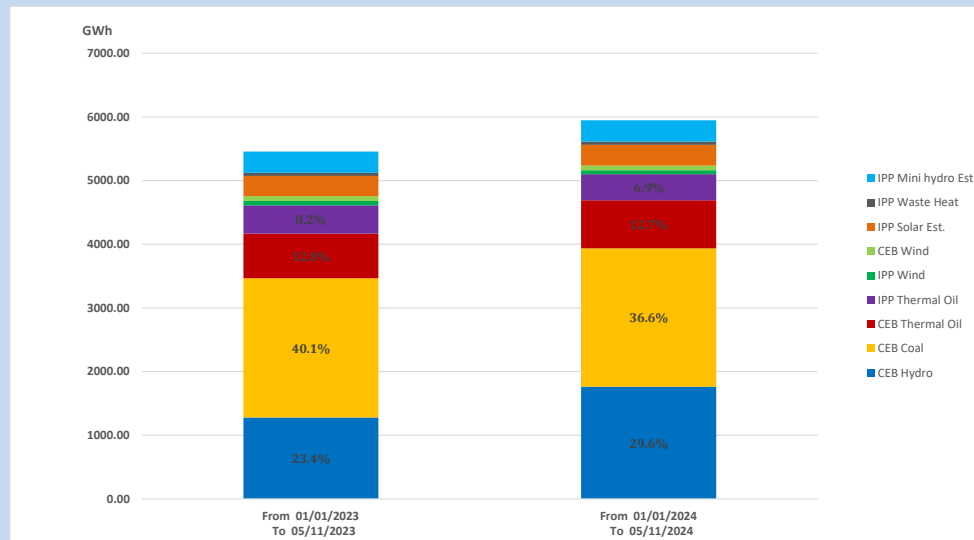
Solar Generation during

May 11, 2024

Based on Telemetered Power Stations only



15. Cumulative Dispatch Comparison with Last Year



Cumulative dispatch

From 01/01/2023 To 05/11/2023

5457 GWh

From 01/01/2024 To 05/11/2024

5947 GWh

The above figures are including contribution from roof top solar, non telemetered solar and mini hydro plants)

Unserviced energy due to power cuts has been excluded in 2023

Thermal Plant Fuel types

Table 08

Power Station	Primary Fuel
CEB Thermal	
Sapugaskanda 1	Heavy Fuel
Sapugaskanda 2	Heavy Fuel
Kelanitissa Small Gas Turbines	Auto Diesel
GT 7 - Kelanitissa	Auto Diesel
Kelanitissa CCY	Naphtha or Diesel
Lakvijaya 1	Coal
Lakvijaya 2	Coal
Lakvijaya 3	Coal
Uthuru Janani	Heavy Fuel
Barge CEB	Heavy Fuel
KCCPS -2	Auto Diesel

Power Station	Primary Fuel
Private Thermal	
West Coast	Auto Diesel / Heavy Fuel

Major Incidents reported during the day

May 11, 2024

- 1) Mannar – New Anuradhapura 220kV cct 01 tripped and A/R from both ends at 16:11hrs.