

Generation and Reservoirs Statistics

May 9, 2024



PUBLIC UTILITIES COMMISSION OF SRI LANKA

1. Daily Generation Mix in MWh

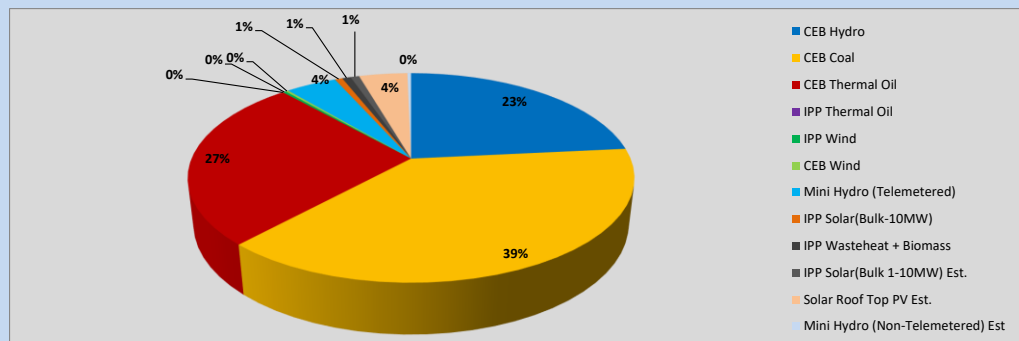


Table 01

	Generation (MWh)
CEB Hydro	11,906
CEB Coal	19,531
CEB Thermal Oil	13,489
IPP Thermal Oil	-
IPP Wind	142
CEB Wind	129
Mini Hydro (Telemetered)	2,240
IPP Solar (Bulk)	333
IPP Waste heat + Biomass	378
Total Generation (Excluding estimated figures)	48,148
* Estimated unserved energy	0
* Estimated Mini Hydro (Non telemetered)	162
* Estimated IPP Solar PV (Bulk 1-10MW)	380
* Estimated Solar Roof Top PV	2130
Total Generation (Including estimated figures)	50,820

* Estimated figures of CEB generation report

Table 02

	Installed Capacity (MW)
CEB Hydro	1530
CEB Coal	810
CEB Thermal Oil	773.1
IPP Thermal Oil (West Coast)	270
IPP Wind	148
CEB Wind	100
Mini Hydro	416
IPP Waste heat + Biomass	50
IPP Solar	110
Rooftop Solar (Ordinary)	250
Rooftop Solar (LT Bulk)	234
Rooftop Solar (HT Bulk)	56

Data Source - Monthly Review Report [Jan-2024]

2. Cumulative Dispatch

Following data excludes the contribution from roof top solar, non telemetered solar and mini hydro plants

Table 03 - Current Month

Category	Dispatch (GWh)	
CEB Hydro	100	22.69%
CEB Coal	174	39.51%
CEB Thermal Oil	106	24.06%
IPP Thermal	0	0.00%
SPP Wind	6	1.30%
CEB Wind	9	2.00%
Mini Hydro *	18	4.01%
IPP Solar *	26	5.78%
IPP Waste heat + BMP	3	0.66%
Total	442	

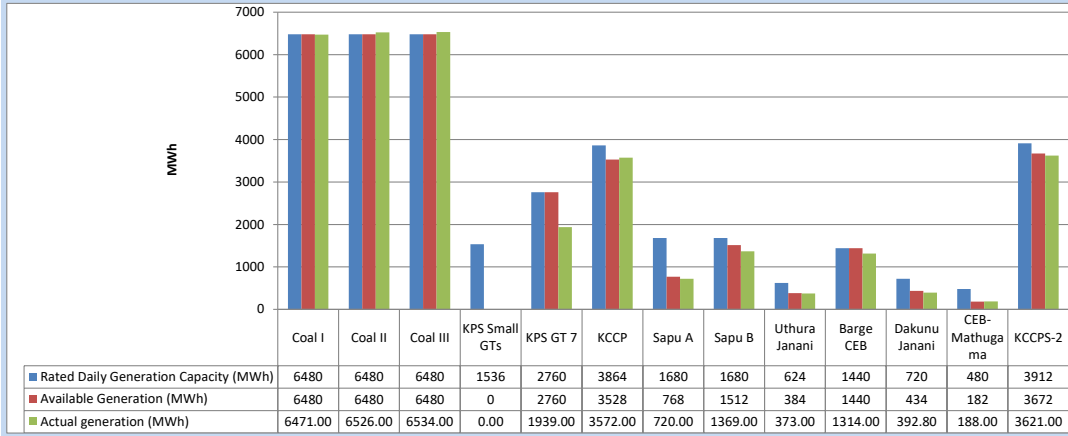
Table 04 - Current Year

Category	Dispatch (GWh)	
CEB Hydro	1,741	29.75%
CEB Coal	2,135	36.48%
CEB Thermal Oil	732	12.50%
IPP Thermal	408	6.97%
SPP Wind	63	1.08%
CEB Wind	72	1.23%
Mini Hydro *	328	5.61%
IPP Solar *	322	5.49%
IPP Waste heat	52	0.89%
Total	5,853	

*Including estimated contribution from non telemetered plants

3. CEB owned Thermal Plant Dispatch

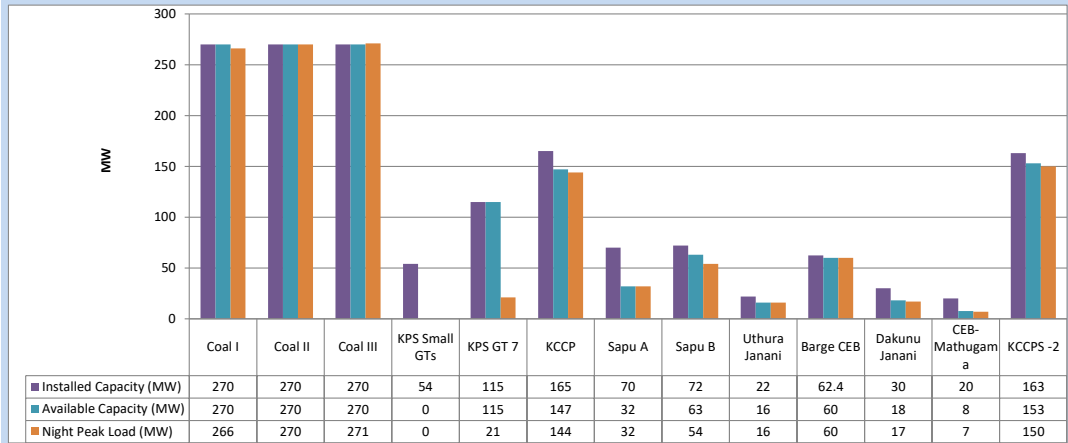
May 9, 2024



Available Generation is estimated based on plant availability at 6.00am on

May 10, 2024

4. CEB owned Thermal Plant Loading at the Night Peak

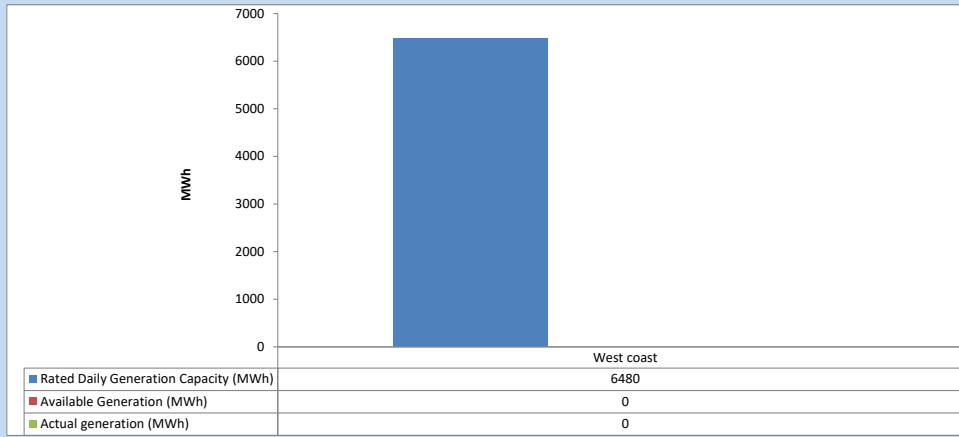


Plant availability is recorded at 6.00 am on

May 10, 2024

5. IPP owned Thermal Plant Dispatch

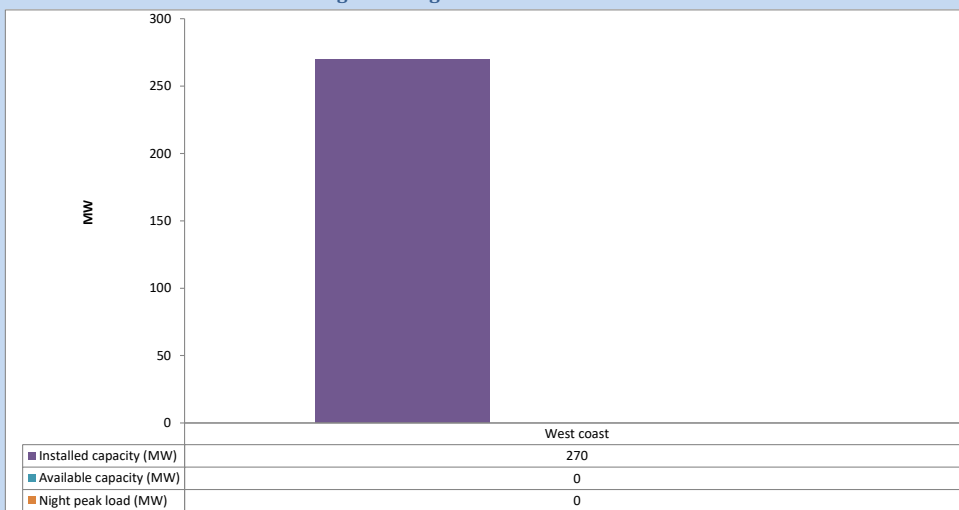
May 9, 2024



Available Generation is estimated based on plant availability at 6.00am on

May 10, 2024

6. IPP owned Thermal Plant Loading at the Night Peak

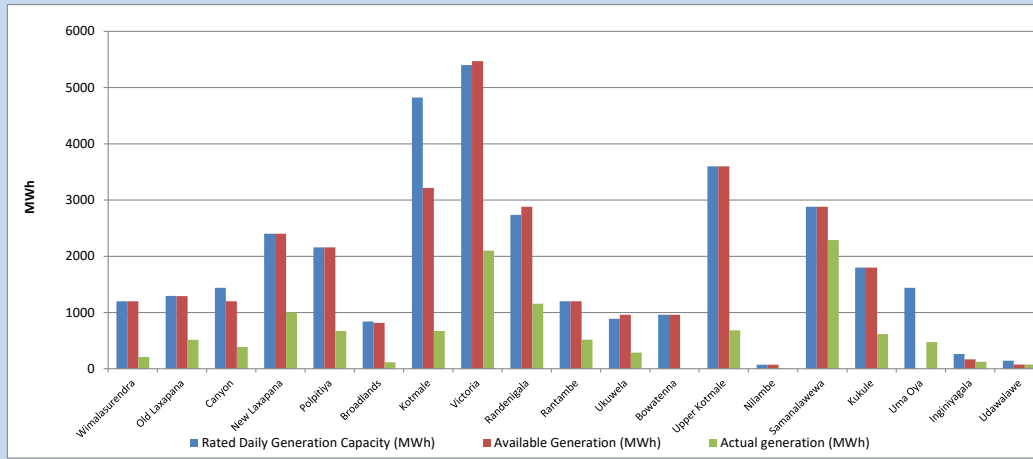


Plant availability is recorded at 6.00 am on

May 10, 2024

7. Major Hydro Plant Dispatch

May 9, 2024

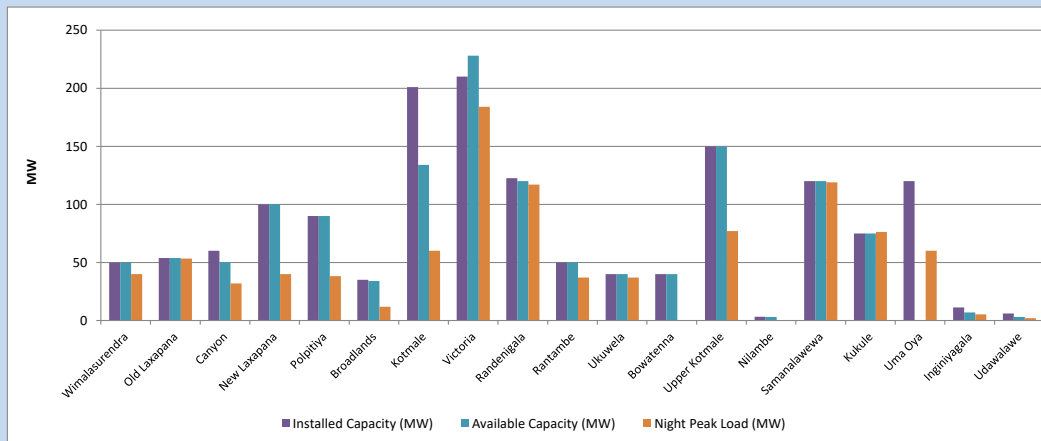


Available Generation is estimated based on plant availability at 6.00am on
Broadlands power plant is operating in the Commissioning Stage

May 10, 2024

8. Major Hydro Plant Loading at Night Peak

May 9, 2024



Plant availability is recorded at 6.00 am on
Broadlands power plant is operating in the Commissioning Stage

May 10, 2024

9. Summary of Major Plant performance

Table 05

Plant	Maximum Available Total Capacity	Plant Availability	Night peak Load	Plant Dispatch
	(MW)	(MW)	(MW)	(MWh)
Wimalasurendra	50	50	40	211
Old Laxapana	54	54	53	515
Canyon	60	50	32	388
New Laxapana	100	100	40	1,004
Polpitiya	90	90	38	670
Broadlands	35	34	12	116
Kotmale	201	134	60	670
Victoria	210	228	184	2,101
Randenigala	123	120	117	1,157
Rantambe	50	50	37	518
Ukuwela	40	40	37	286
Bowatenna	40	40	0	0
Upper Kotmale	150	150	77	683
Nilambe	3	3	0	5
Samanalawewa	120	120	119	2,290
Kukule	75	75	76	617
Uma Oya (Testing)	120	0	60	476
Inginiyagala	11	7	5	125
Udawalawe	6	3	2	76
Puttalam Coal I	270	270	266	6,471
Puttalam Coal II	270	270	270	6,526
Puttalam Coal III	270	270	271	6,534
KPS Small GTs	54	0	0	0
KPS GT 7	115	115	21	1,939
KCCP	165	147	144	3,572
Sapugaskanda A	70	32	32	720
Sapugaskanda B	72	63	54	1,369
Uthura Janani	22	16	16	373
Barge CEB	62	60	60	1,314
CEB-Hambantota	30	18	17	393
CEB-Mathugama	20	8	7	188
ACE Matara	24	0	0	0
Asia Power	50	0	0	0
KCCPS -2	163	153	150	3,621
West Coast	270	0	0	0
Nothern Power	36	0	0	0
ACE Embilipitiya	93	0	0	0
Total	3,594	2,770	2,439	48,150

Note-

Plant availability is the availability recorded at 6 am on

May 10, 2024

Installed Capacity is sourced from CEB Annual Report- 2022

10. Contribution to the Night Peak in MW

May 9, 2024

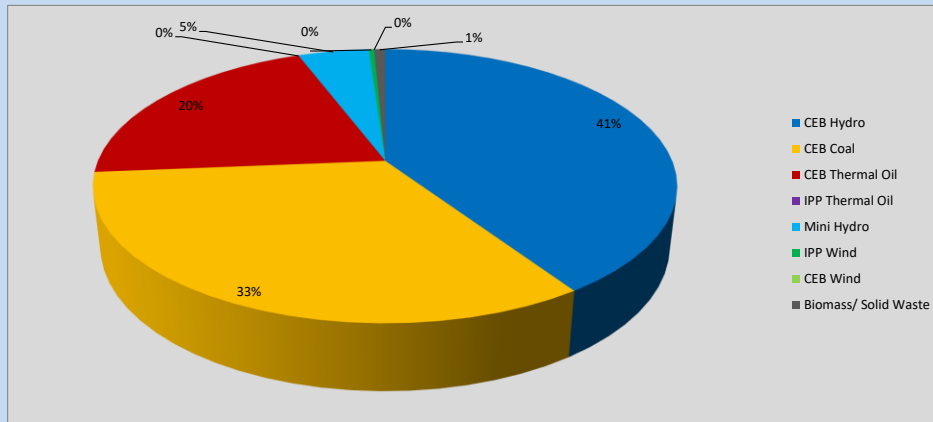


Table 06

CEB Hydro	991	MW
CEB Coal	807	MW
CEB Thermal Oil	501	MW
IPP Thermal Oil	0	MW
Mini Hydro (Telemetered)	115	MW
IPP Wind	8.5	MW
CEB Wind	0	MW
Biomass/ Solid Waste	18	MW

Recorded Peak Demand Data

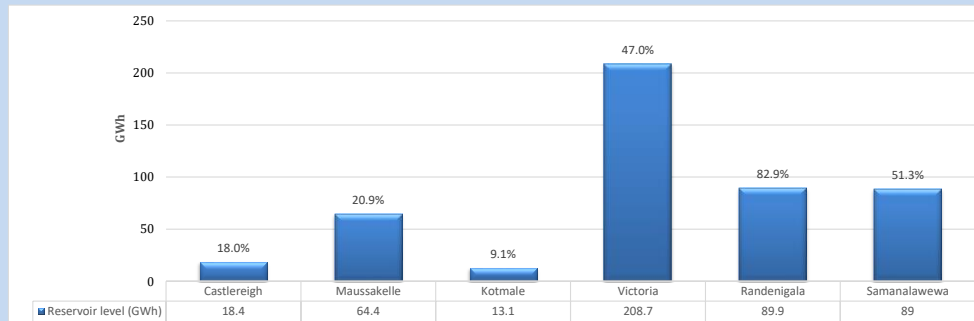
Table 07

Night Peak*	2,440	MW
Day Peak Maximum Demand	2,335	MW
Day Peak Minimum Demand	1,840	MW
Off Peak Minimum Demand	1,532	MW

Above figures are excluding contribution from roof top solar, non telemetered solar and mini hydro plants

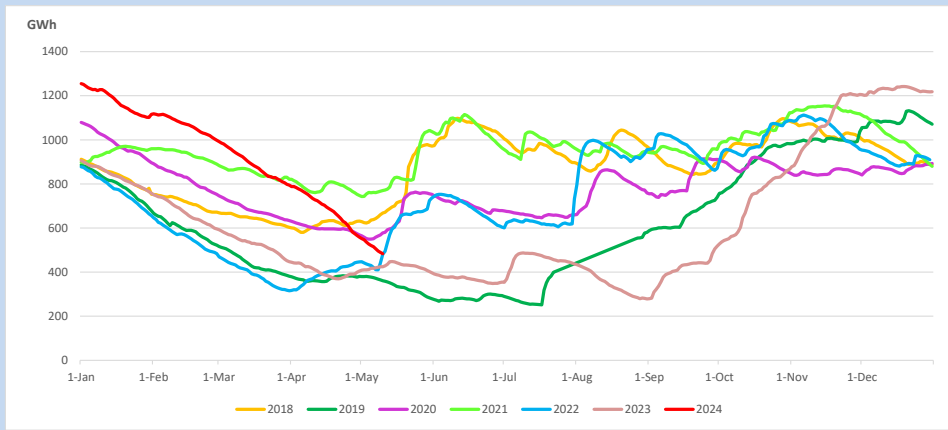
Reservoir Levels -

as at 06.00 Hr on May 10, 2024

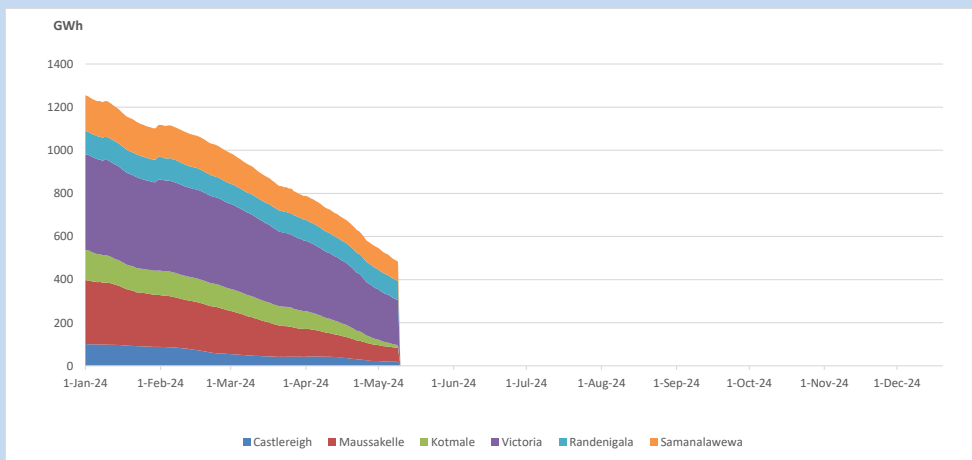


Total Reservoir Level 483.5 GWh
% of Total capacity 37.8%

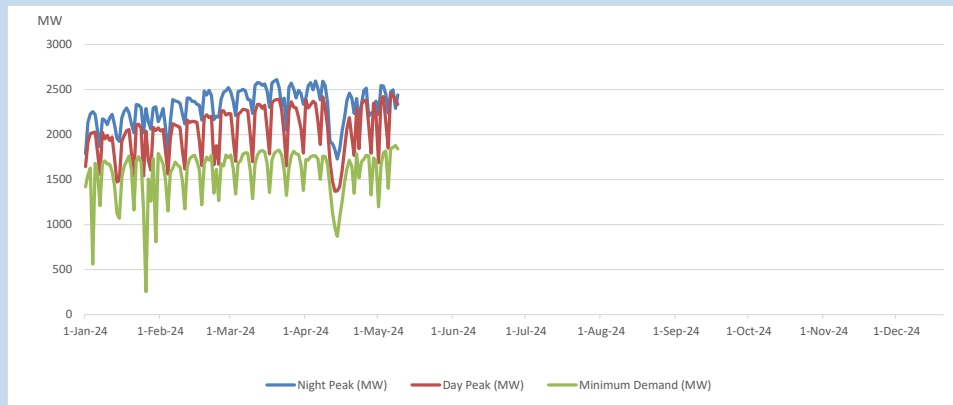
11. Comparison of Total Reservoir Storage Levels with Past Years



12. Variation of Major Hydro Reservoir Levels in the current year (GWh)



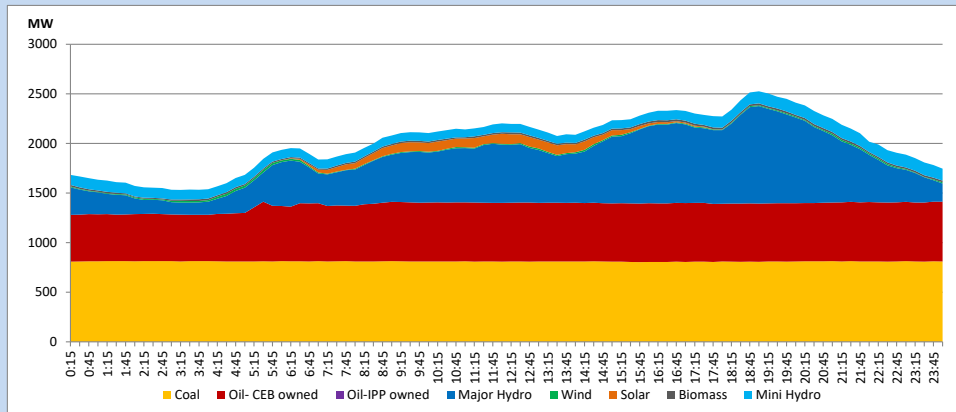
13. Variation of Demand during the current year



The above figures are excluding contribution from roof top solar, non telemetered solar and mini hydro plants

14. Daily Load Curve

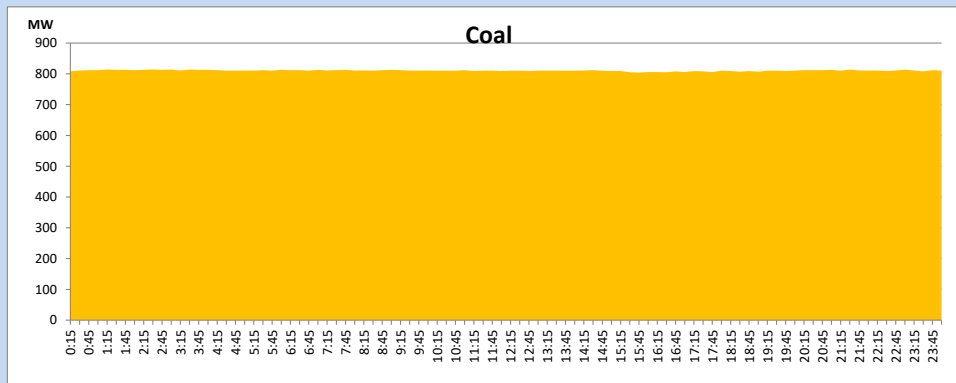
May 9, 2024



Solar and wind data is based on Telemetered Power Stations only

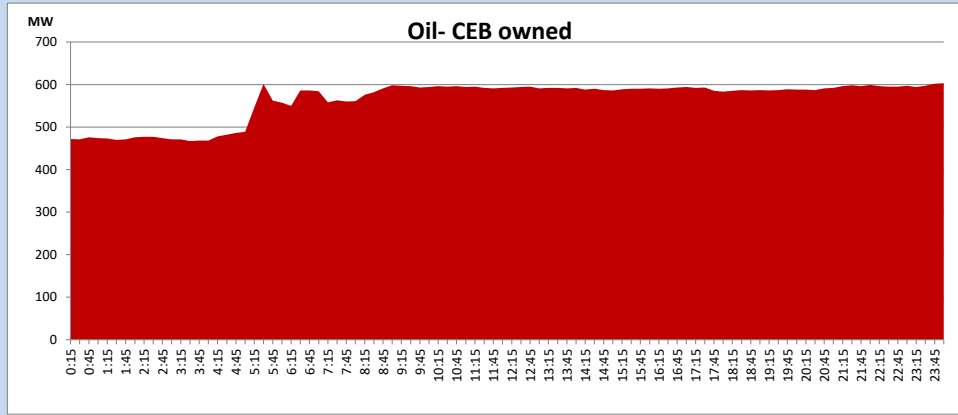
Coal Generation during

May 9, 2024



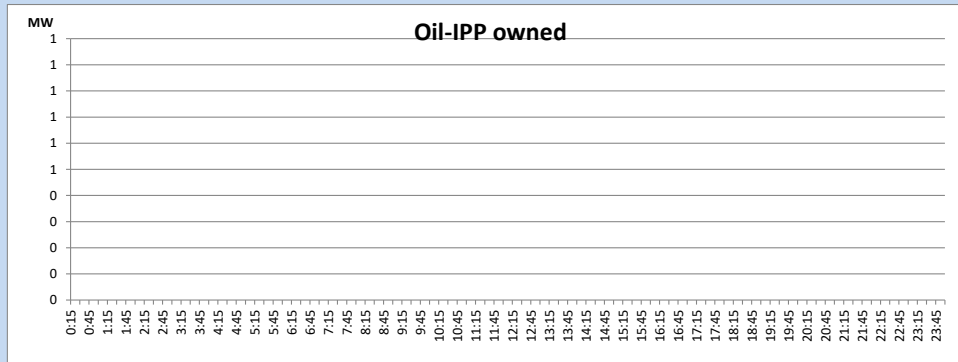
CEB Oil Plant Generation during

May 9, 2024



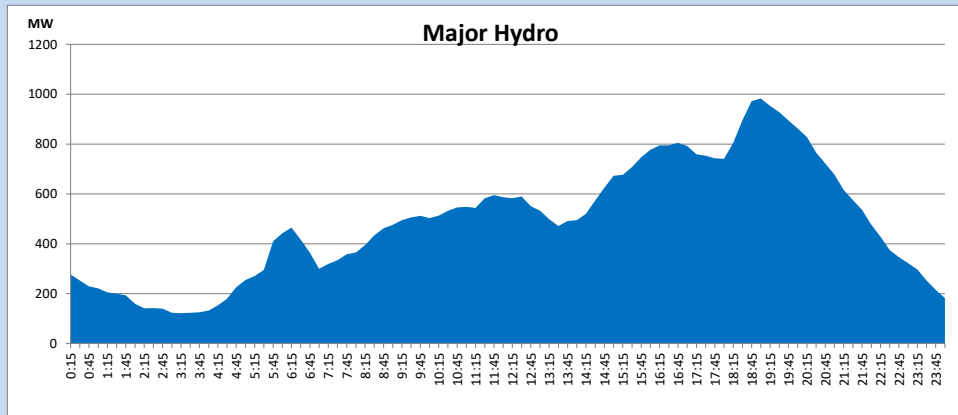
IPP Oil Plant Generation during

May 9, 2024



Major Hydro Generation during

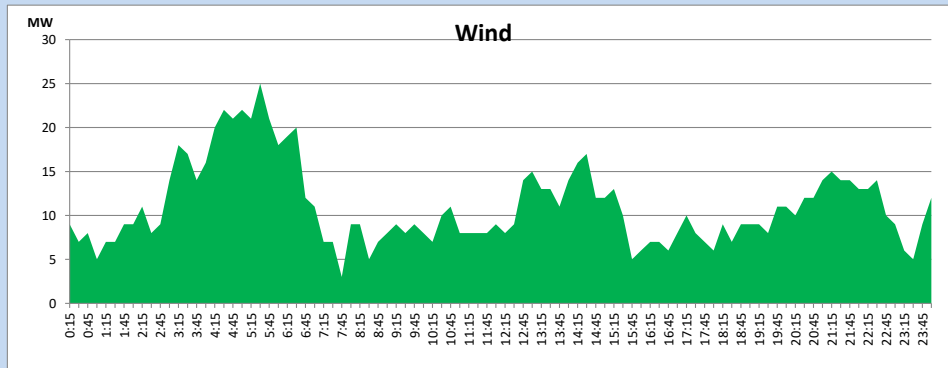
May 9, 2024



Wind Generation during

May 9, 2024

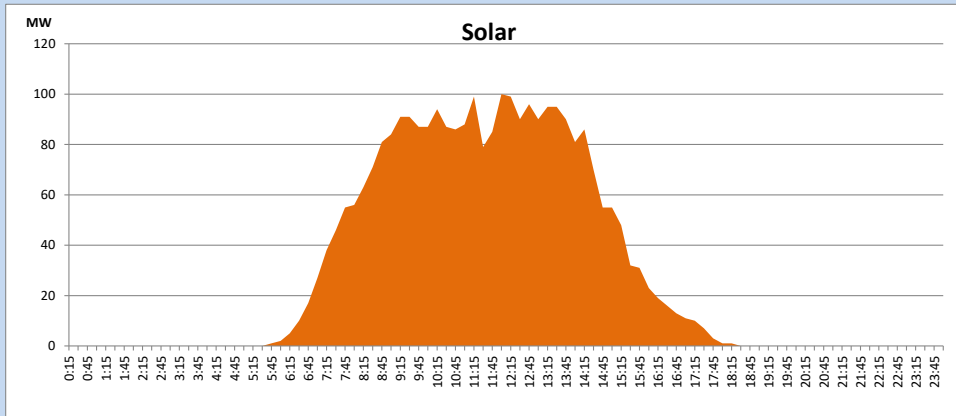
Based on Telemetered Power Stations only



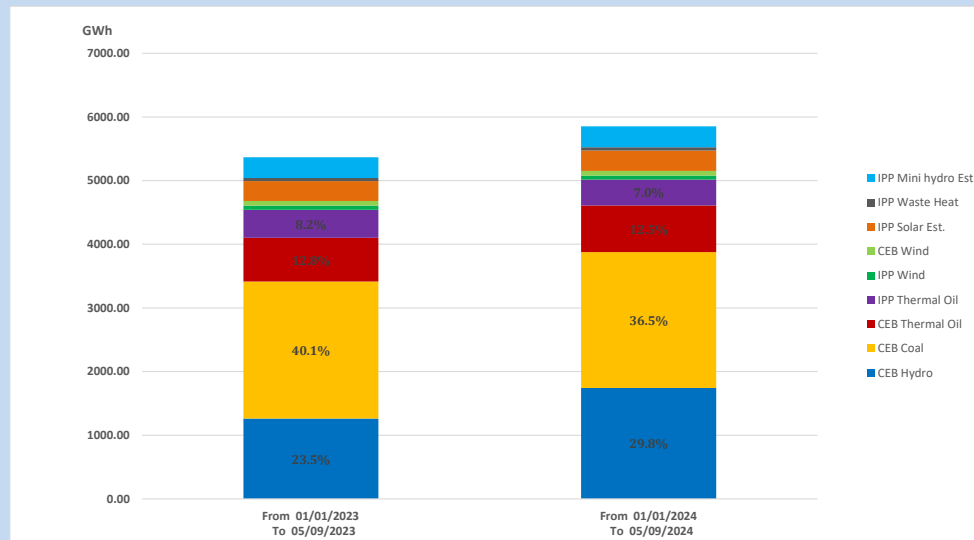
Solar Generation during

May 9, 2024

Based on Telemetered Power Stations only



15. Cumulative Dispatch Comparison with Last Year



Cumulative dispatch

From 01/01/2023 To 05/09/2023

5366 GWh

From 01/01/2024 To 05/09/2024

5853 GWh

The above figures are including contribution from roof top solar, non telemetered solar and mini hydro plants)

Unserviced energy due to power cuts has been excluded in 2023

Thermal Plant Fuel types

Table 08

Power Station	Primary Fuel
CEB Thermal	
Sapugaskanda 1	Heavy Fuel
Sapugaskanda 2	Heavy Fuel
Kelanitissa Small Gas Turbines	Auto Diesel
GT 7 - Kelanitissa	Auto Diesel
Kelanitissa CCY	Naphtha or Diesel
Lakvijaya 1	Coal
Lakvijaya 2	Coal
Lakvijaya 3	Coal
Uthuru Janani	Heavy Fuel
Barge CEB	Heavy Fuel
KCCPS -2	Auto Diesel

Power Station	Primary Fuel
Private Thermal	
West Coast	Auto Diesel / Heavy Fuel

Major Incidents reported during the day

May 9, 2024

1) Nil