

Generation and Reservoirs Statistics

May 6, 2024



PUBLIC UTILITIES COMMISSION OF SRI LANKA

1. Daily Generation Mix in MWh

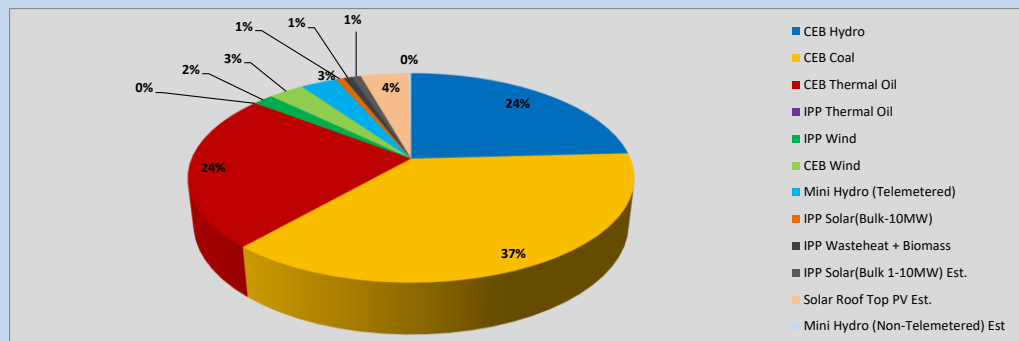


Table 01

	Generation (MWh)
CEB Hydro	12,418
CEB Coal	19,178
CEB Thermal Oil	12,323
IPP Thermal Oil	-
IPP Wind	915
CEB Wind	1,571
Mini Hydro (Telemetered)	1,621
IPP Solar (Bulk)	371
IPP Waste heat + Biomass	358
Total Generation (Excluding estimated figures)	48,755
* Estimated unserved energy	0
* Estimated Mini Hydro (Non telemetered)	117
* Estimated IPP Solar PV (Bulk 1-10MW)	410
* Estimated Solar Roof Top PV	2130
Total Generation (Including estimated figures)	51,412

* Estimated figures of CEB generation report

Table 02

	Installed Capacity (MW)
CEB Hydro	1530
CEB Coal	810
CEB Thermal Oil	773.1
IPP Thermal Oil (West Coast)	270
IPP Wind	148
CEB Wind	100
Mini Hydro	416
IPP Waste heat + Biomass	50
IPP Solar	110
Rooftop Solar (Ordinary)	250
Rooftop Solar (LT Bulk)	234
Rooftop Solar (HT Bulk)	56

Data Source - Monthly Review Report [Jan-2024]

2. Cumulative Dispatch

Following data excludes the contribution from roof top solar, non telemetered solar and mini hydro plants

Table 03 - Current Month

Category	Dispatch (GWh)	
CEB Hydro	64	22.14%
CEB Coal	116	40.33%
CEB Thermal Oil	66	22.90%
IPP Thermal	0	0.00%
SPP Wind	5	1.64%
CEB Wind	7	2.56%
Mini Hydro *	11	3.92%
IPP Solar *	17	5.91%
IPP Waste heat + BMP	2	0.61%
Total	288	

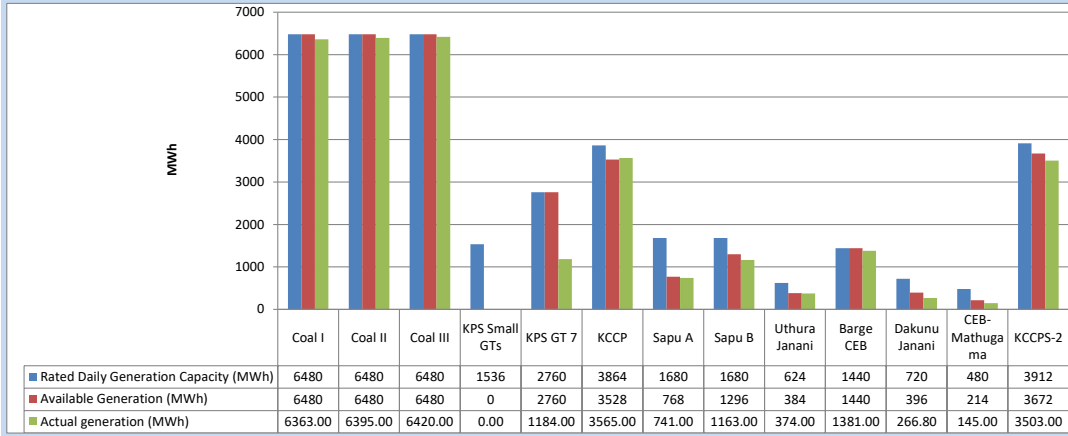
Table 04 - Current Year

Category	Dispatch (GWh)	
CEB Hydro	1,705	29.91%
CEB Coal	2,077	36.44%
CEB Thermal Oil	691	12.13%
IPP Thermal	408	7.15%
SPP Wind	62	1.09%
CEB Wind	71	1.24%
Mini Hydro *	322	5.65%
IPP Solar *	313	5.49%
IPP Waste heat	51	0.89%
Total	5,699	

*Including estimated contribution from non telemetered plants

3. CEB owned Thermal Plant Dispatch

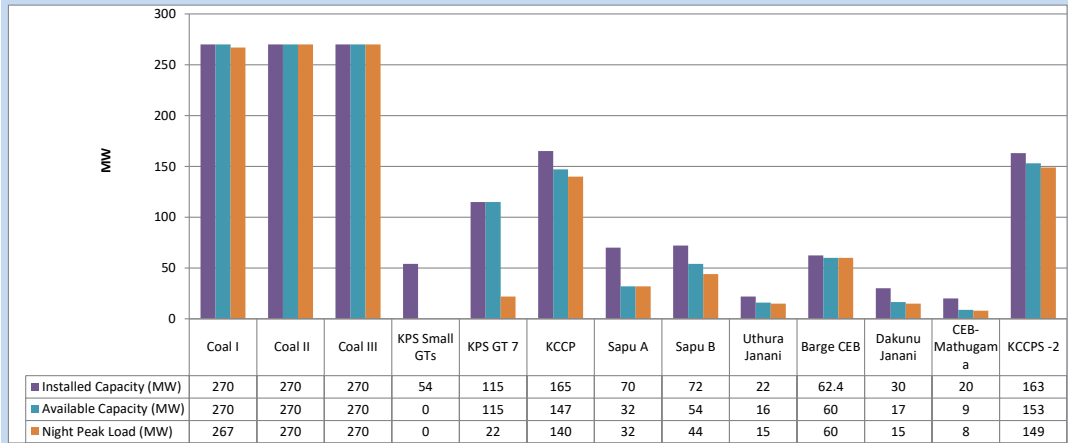
May 6, 2024



Available Generation is estimated based on plant availability at 6.00am on

May 7, 2024

4. CEB owned Thermal Plant Loading at the Night Peak

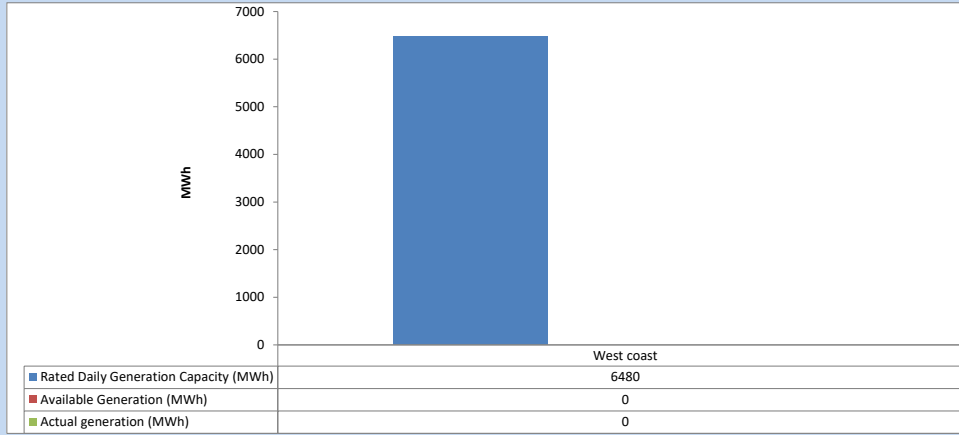


Plant availability is recorded at 6.00 am on

May 7, 2024

5. IPP owned Thermal Plant Dispatch

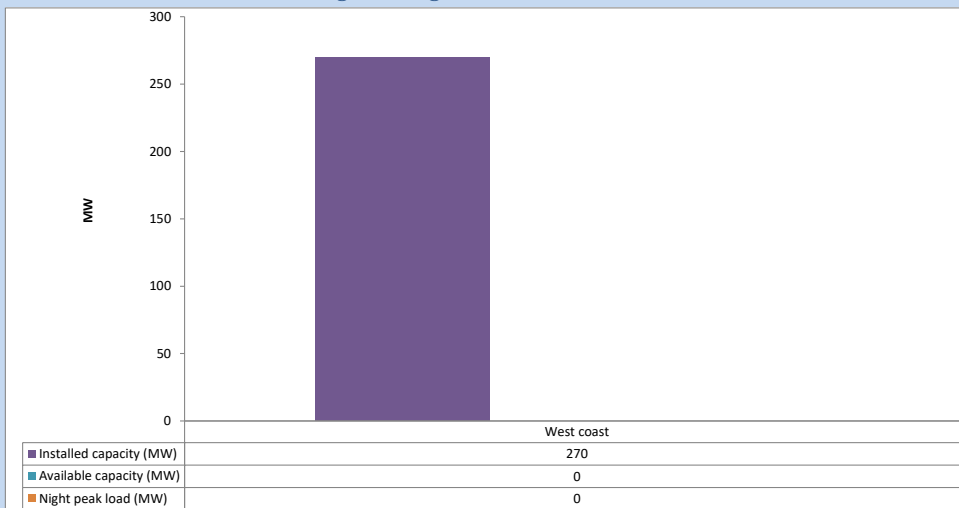
May 6, 2024



Available Generation is estimated based on plant availability at 6.00am on

May 7, 2024

6. IPP owned Thermal Plant Loading at the Night Peak

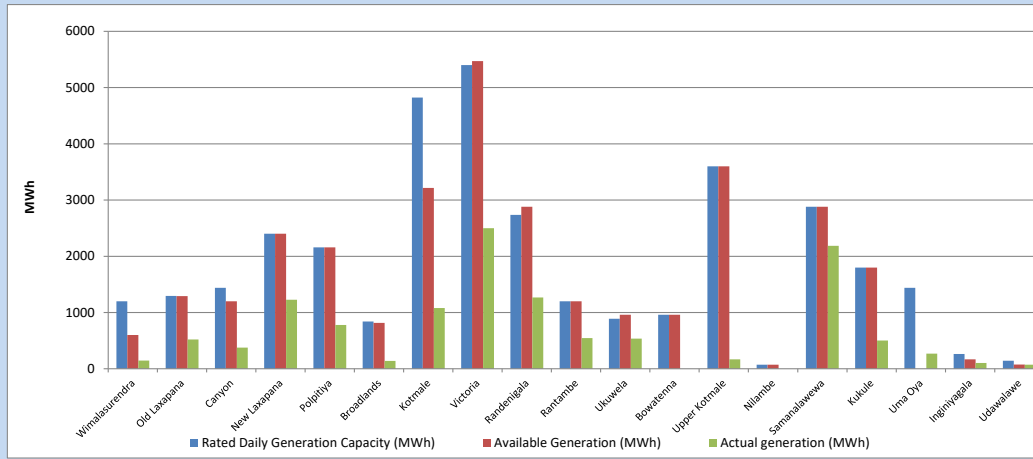


Plant availability is recorded at 6.00 am on

May 7, 2024

7. Major Hydro Plant Dispatch

May 6, 2024

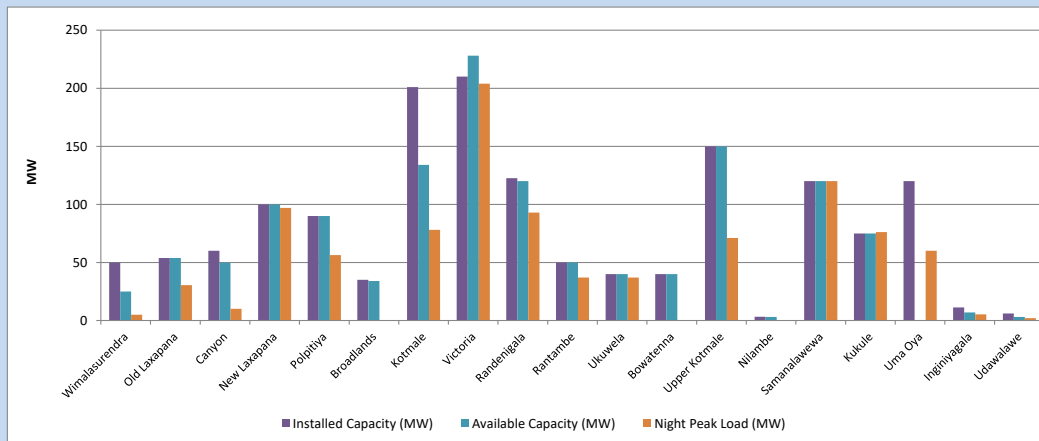


Available Generation is estimated based on plant availability at 6.00am on
Broadlands power plant is operating in the Commissioning Stage

May 7, 2024

8. Major Hydro Plant Loading at Night Peak

May 6, 2024



Plant availability is recorded at 6.00 am on
Broadlands power plant is operating in the Commissioning Stage

May 7, 2024

9. Summary of Major Plant performance

Table 05

Plant	Maximum Available Total Capacity	Plant Availability	Night peak Load	Plant Dispatch
	(MW)	(MW)	(MW)	(MWh)
Wimalasurendra	50	25	5	146
Old Laxapana	54	54	31	520
Canyon	60	50	10	377
New Laxapana	100	100	97	1,227
Polpitiya	90	90	56	780
Broadlands	35	34	0	140
Kotmale	201	134	78	1,080
Victoria	210	228	204	2,500
Randenigala	123	120	93	1,268
Rantambe	50	50	37	546
Ukuwela	40	40	37	536
Bowatenna	40	40	0	0
Upper Kotmale	150	150	71	166
Nilambe	3	3	0	0
Samanalawewa	120	120	120	2,186
Kukule	75	75	76	503
Uma Oya (Testing)	120	0	60	270
Inginiyagala	11	7	5	104
Udawalawe	6	3	2	71
Puttalam Coal I	270	270	267	6,363
Puttalam Coal II	270	270	270	6,395
Puttalam Coal III	270	270	270	6,420
KPS Small GTs	54	0	0	0
KPS GT 7	115	115	22	1,184
KCCP	165	147	140	3,565
Sapugaskanda A	70	32	32	741
Sapugaskanda B	72	54	44	1,163
Uthura Janani	22	16	15	374
Barge CEB	62	60	60	1,381
CEB-Hambantota	30	17	15	267
CEB-Mathugama	20	9	8	145
ACE Matara	24	0	0	0
Asia Power	50	0	0	0
KCCPS -2	163	153	149	3,503
West Coast	270	0	0	0
Nothern Power	36	0	0	0
ACE Embilipitiya	93	0	0	0
Total	3,594	2,735	2,469	48,757

Note-

Plant availability is the availability recorded at 6 am on

May 7, 2024

Installed Capacity is sourced from CEB Annual Report- 2022

10. Contribution to the Night Peak in MW

May 6, 2024

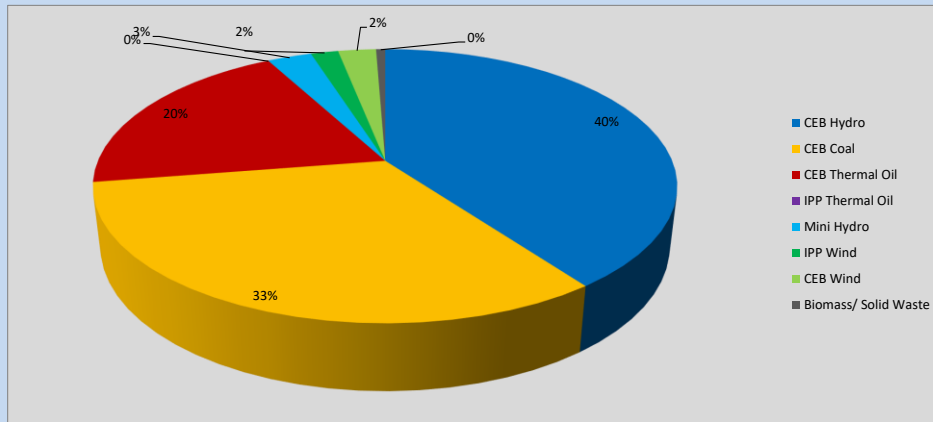


Table 06

CEB Hydro	987	MW
CEB Coal	807	MW
CEB Thermal Oil	485	MW
IPP Thermal Oil	0	MW
Mini Hydro (Telemetered)	73	MW
IPP Wind	44.9	MW
CEB Wind	62.1	MW
Biomass/ Solid Waste	15	MW

Recorded Peak Demand Data

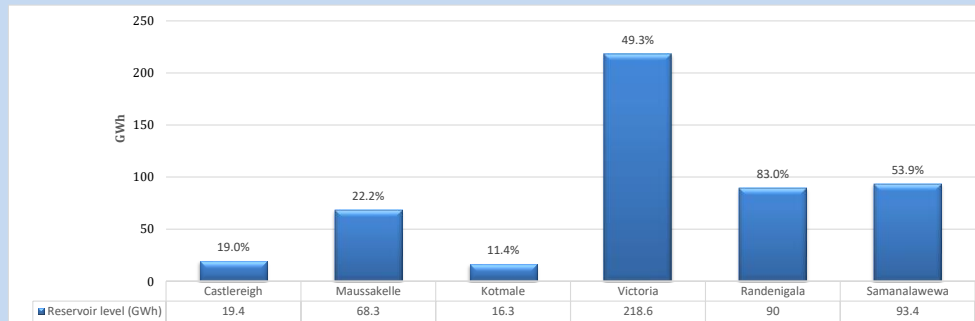
Table 07

Night Peak*	2,473	MW
Day Peak Maximum Demand	2,460	MW
Day Peak Minimum Demand	1,846	MW
Off Peak Minimum Demand	1,549	MW

Above figures are excluding contribution from roof top solar, non telemetered solar and mini hydro plants

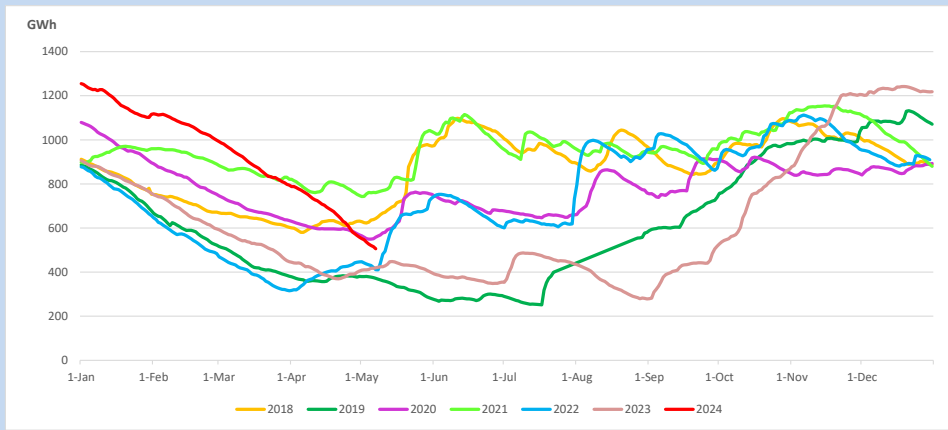
Reservoir Levels -

as at 06.00 Hr on May 7, 2024

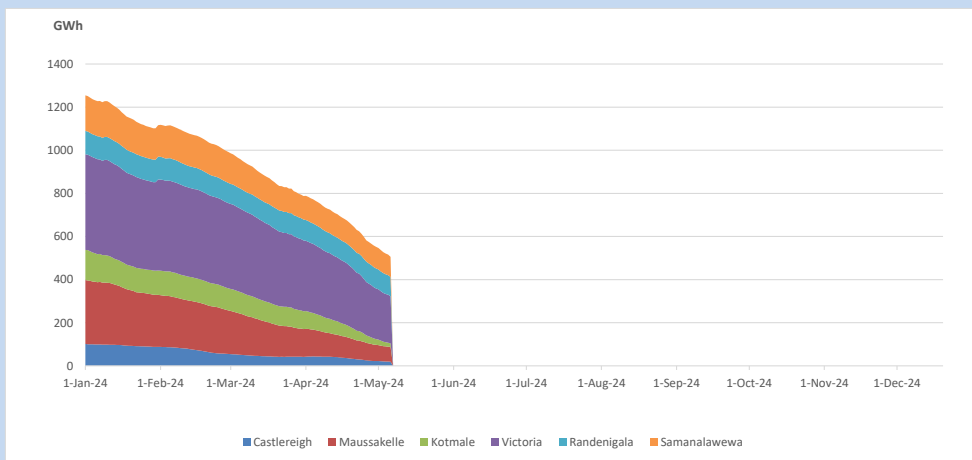


Total Reservoir Level 506 GWh
% of Total capacity 39.6%

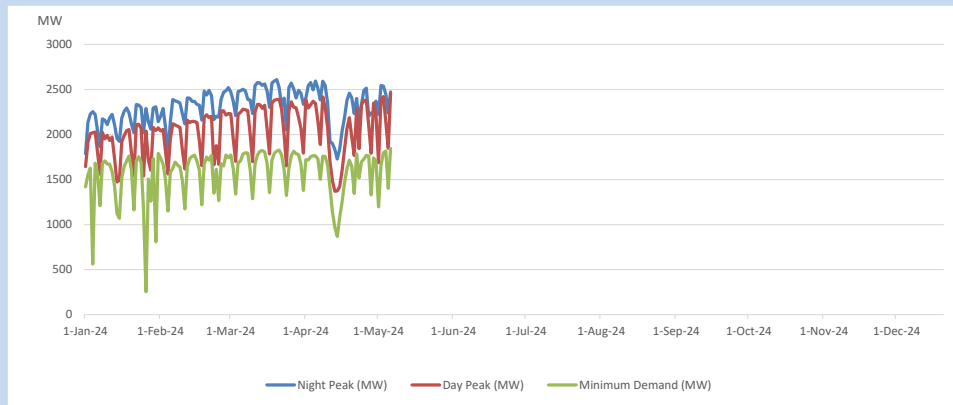
11. Comparison of Total Reservoir Storage Levels with Past Years



12. Variation of Major Hydro Reservoir Levels in the current year (GWh)



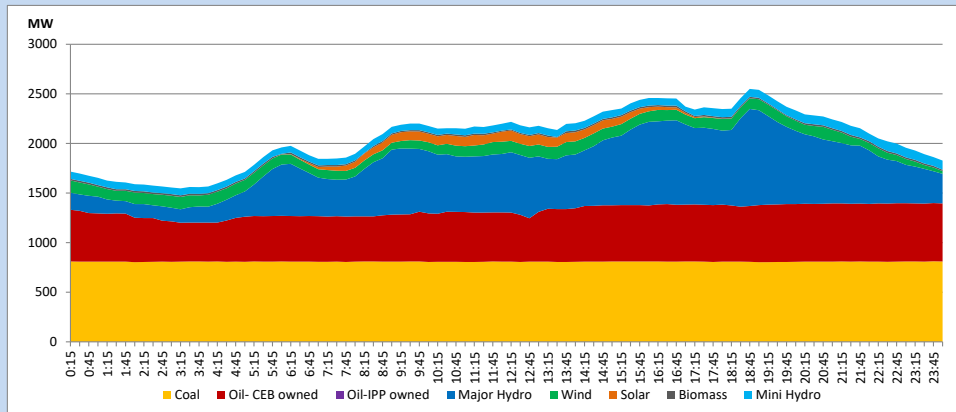
13. Variation of Demand during the current year



The above figures are excluding contribution from roof top solar, non telemetered solar and mini hydro plants

14. Daily Load Curve

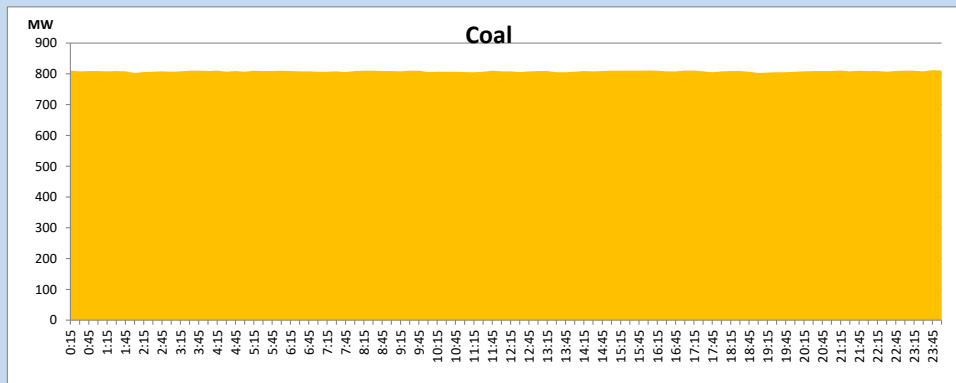
May 6, 2024



Solar and wind data is based on Telemetered Power Stations only

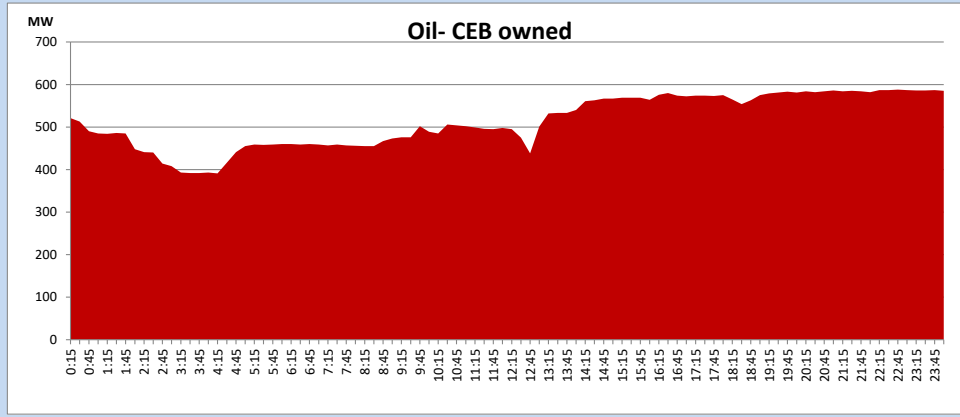
Coal Generation during

May 6, 2024



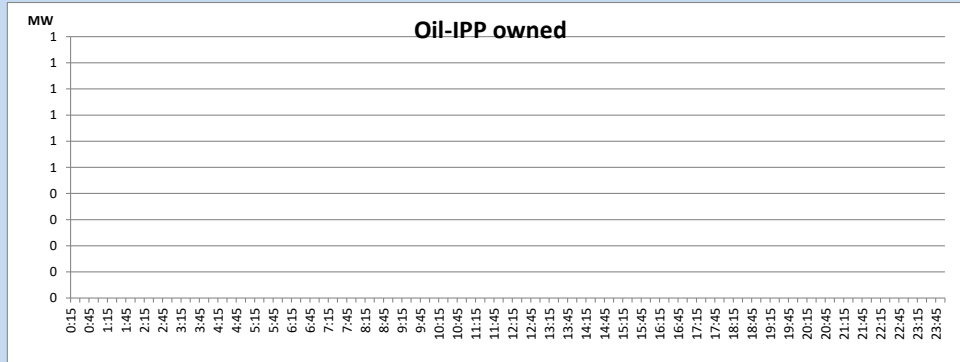
CEB Oil Plant Generation during

May 6, 2024



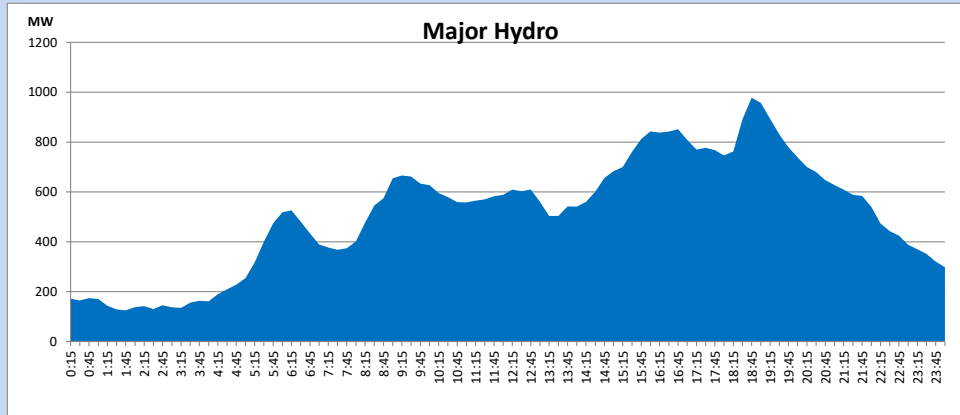
IPP Oil Plant Generation during

May 6, 2024



Major Hydro Generation during

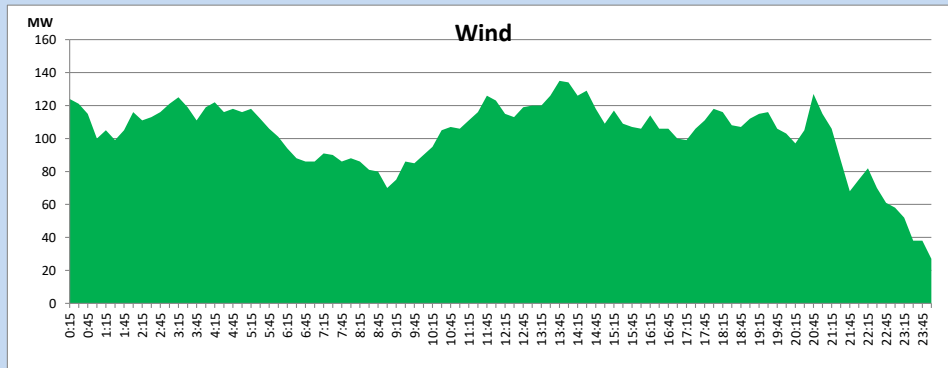
May 6, 2024



Wind Generation during

May 6, 2024

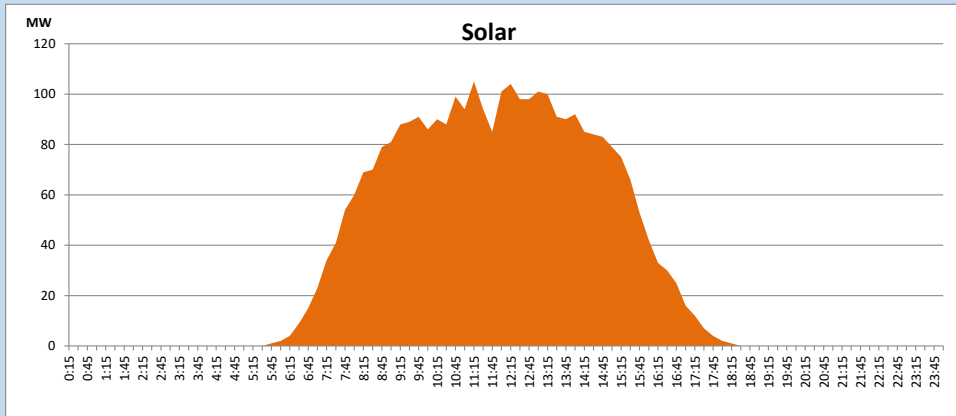
Based on Telemetered Power Stations only



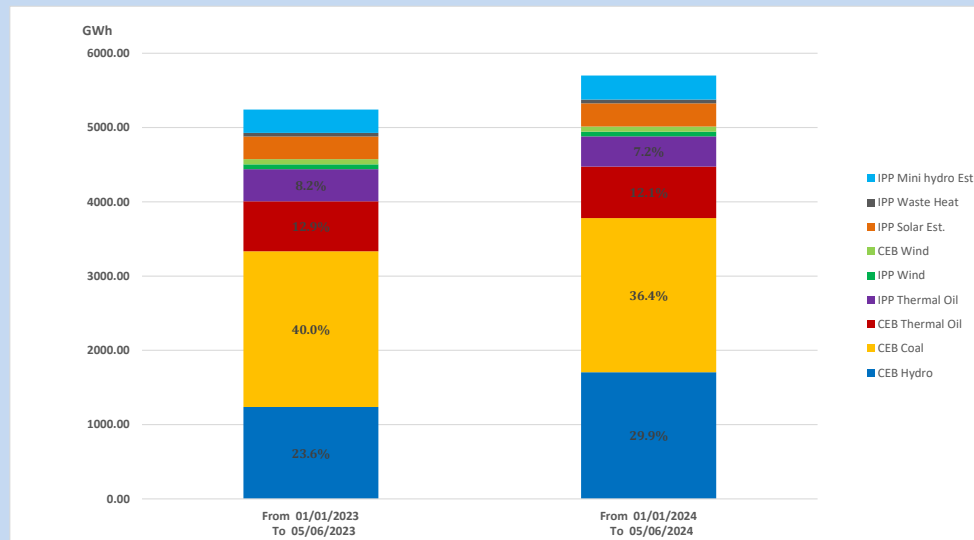
Solar Generation during

May 6, 2024

Based on Telemetered Power Stations only



15. Cumulative Dispatch Comparison with Last Year



Cumulative dispatch
 From 01/01/2023 To 05/06/2023
 From 01/01/2024 To 05/06/2024

5242 GWh
 5699 GWh

The above figures are including contribution from roof top solar, non telemetered solar and mini hydro plants)
 Unserviced energy due to power cuts has been excluded in 2023

Thermal Plant Fuel types

Table 08

Power Station	Primary Fuel
CEB Thermal	
Sapugaskanda 1	Heavy Fuel
Sapugaskanda 2	Heavy Fuel
Kelanitissa Small Gas Turbines	Auto Diesel
GT 7 - Kelanitissa	Auto Diesel
Kelanitissa CCY	Naphtha or Diesel
Lakvijaya 1	Coal
Lakvijaya 2	Coal
Lakvijaya 3	Coal
Uthuru Janani	Heavy Fuel
Barge CEB	Heavy Fuel
KCCPS -2	Auto Diesel

Power Station	Primary Fuel
Private Thermal	
West Coast	Auto Diesel / Heavy Fuel

Major Incidents reported during the day

May 6, 2024

- 1) The recorded maximum day peak 2459.7MW occurred at 16:38hrs.
- 2) Mannar 220/33kV T/F tripped only from 33kV side along with 33kV feeder 02 without any indication at 17:29hrs causing Mannar 33kV feeder 01, 03 & 04 to be dead. Mannar 220/33kV T/F normalized at 17:35hrs and all affected feeders normalized by 18:45hrs.
- 3) Balangoda - Galle 132kV cct, tripped and A/R from both ends at 17:25hrs & tripped from both ends at 19:27hrs due to the operation of distance protection at both occasions. The cct was normalized at 19:51hrs.
- 4) Embilipitiya - Samanalawewa 132kV cct 02 tripped and A/R from both ends at 18:28hrs due to the operation distance protection.
- 5) Biyagama - Kothmale 220kV cct 02 tripped and A/R from both ends at 18:37hrs due to the operation of differential protection.
- 6) Habarana 132/33kV T/F 01 tripped from both ends and New Anuradhapura - Habarana 132kV cct tripped from New Anuradhapura end due to the operation of differential protection at 23:48hrs. The cct was normalized at 23:50hrs and the T/F is yet to be normalized.