

Generation and Reservoirs Statistics

May 3, 2024



PUBLIC UTILITIES COMMISSION OF SRI LANKA

1. Daily Generation Mix in MWh

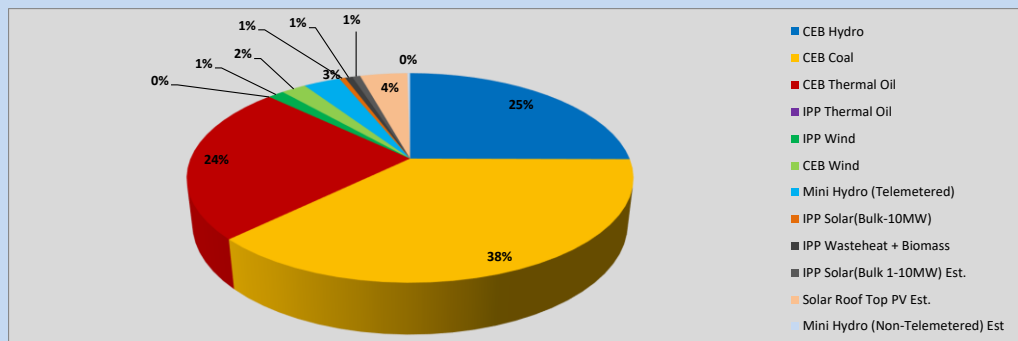


Table 01

	Generation (MWh)
CEB Hydro	13,019
CEB Coal	19,547
CEB Thermal Oil	12,621
IPP Thermal Oil	-
IPP Wind	727
CEB Wind	1,117
Mini Hydro (Telemetered)	1,655
IPP Solar (Bulk)	266
IPP Waste heat + Biomass	326
Total Generation (Excluding estimated figures)	49,278
* Estimated unserved energy	0
* Estimated Mini Hydro (Non telemetered)	120
* Estimated IPP Solar PV (Bulk 1-10MW)	362
* Estimated Solar Roof Top PV	2130
Total Generation (Including estimated figures)	51,890

* Estimated figures of CEB generation report

Table 02

	Installed Capacity (MW)
CEB Hydro	1644
CEB Coal	810
CEB Thermal Oil	773.1
IPP Thermal Oil (West Coast)	270
IPP Wind	163
CEB Wind	100
Mini Hydro	422
IPP Waste heat + Biomass	54
IPP Solar	137
Rooftop Solar (Ordinary)	293
Rooftop Solar (LT Bulk)	272
Rooftop Solar (HT Bulk)	74

Data Source - Monthly Review Report [Nov-2023]

2. Cumulative Dispatch

Following data excludes the contribution from roof top solar, non telemetered solar and mini hydro plants

Table 03 - Current Month

Category	Dispatch (GWh)	
CEB Hydro	34	23.75%
CEB Coal	58	40.64%
CEB Thermal Oil	30	21.21%
IPP Thermal	0	0.00%
SPP Wind	2	1.44%
CEB Wind	3	2.32%
Mini Hydro *	6	4.25%
IPP Solar *	8	5.89%
IPP Waste heat + BMP	1	0.50%
Total	142	

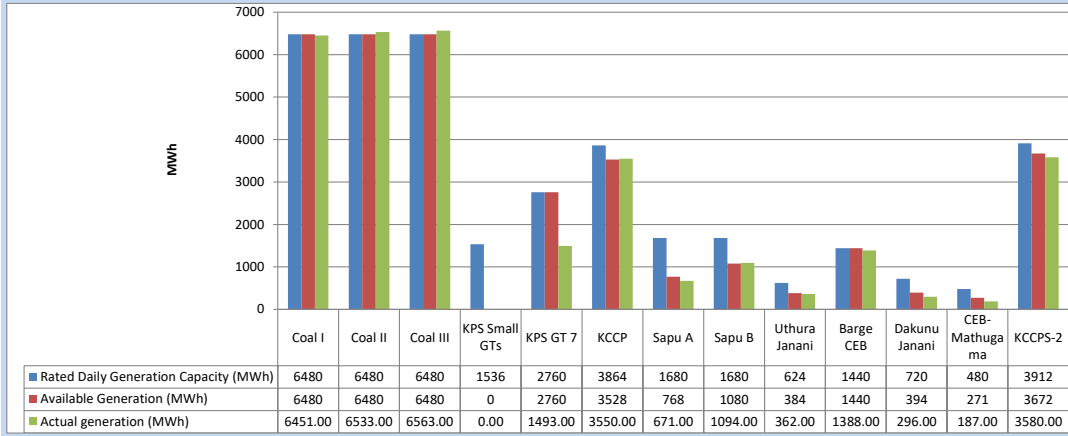
Table 04 - Current Year

Category	Dispatch (GWh)	
CEB Hydro	1,675	30.16%
CEB Coal	2,018	36.35%
CEB Thermal Oil	656	11.80%
IPP Thermal	408	7.34%
SPP Wind	60	1.07%
CEB Wind	67	1.20%
Mini Hydro *	317	5.70%
IPP Solar *	304	5.48%
IPP Waste heat	50	0.89%
Total	5,553	

*Including estimated contribution from non telemetered plants

3. CEB owned Thermal Plant Dispatch

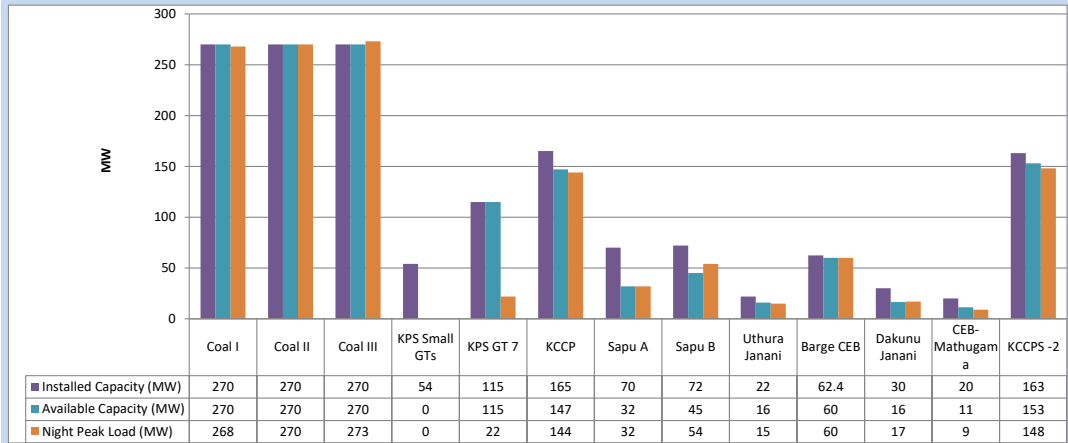
May 3, 2024



Available Generation is estimated based on plant availability at 6.00am on

May 4, 2024

4. CEB owned Thermal Plant Loading at the Night Peak

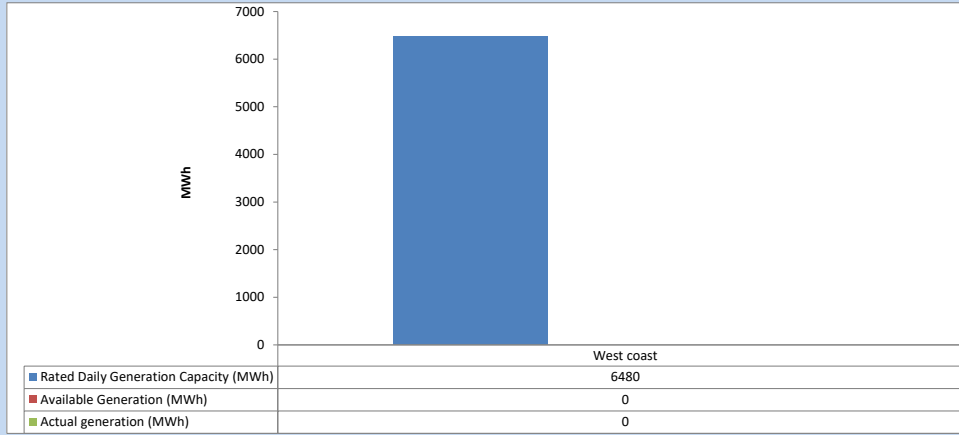


Plant availability is recorded at 6.00 am on

May 4, 2024

5. IPP owned Thermal Plant Dispatch

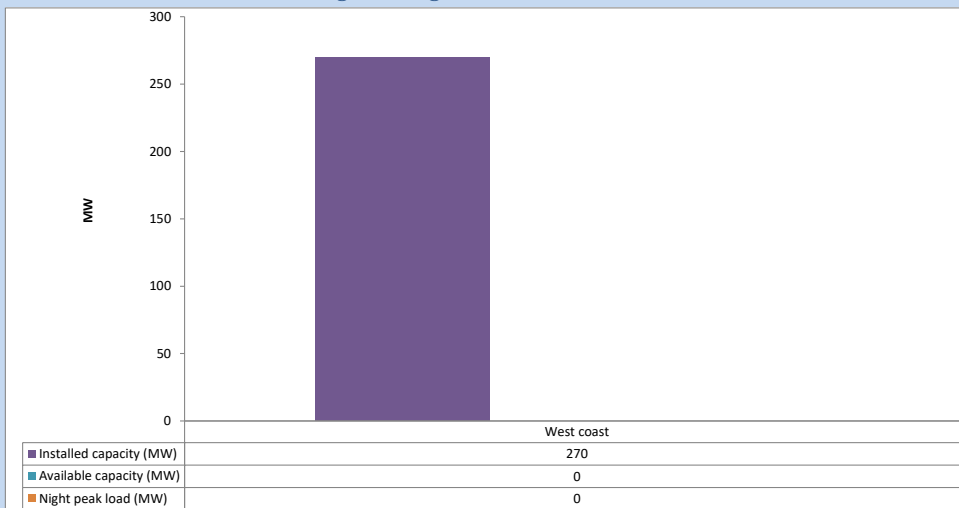
May 3, 2024



Available Generation is estimated based on plant availability at 6.00am on

May 4, 2024

6. IPP owned Thermal Plant Loading at the Night Peak

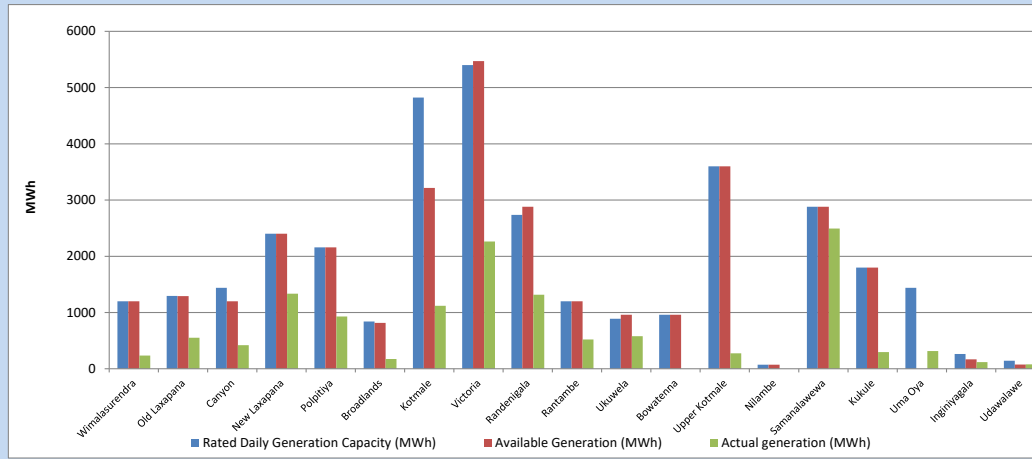


Plant availability is recorded at 6.00 am on

May 4, 2024

7. Major Hydro Plant Dispatch

May 3, 2024

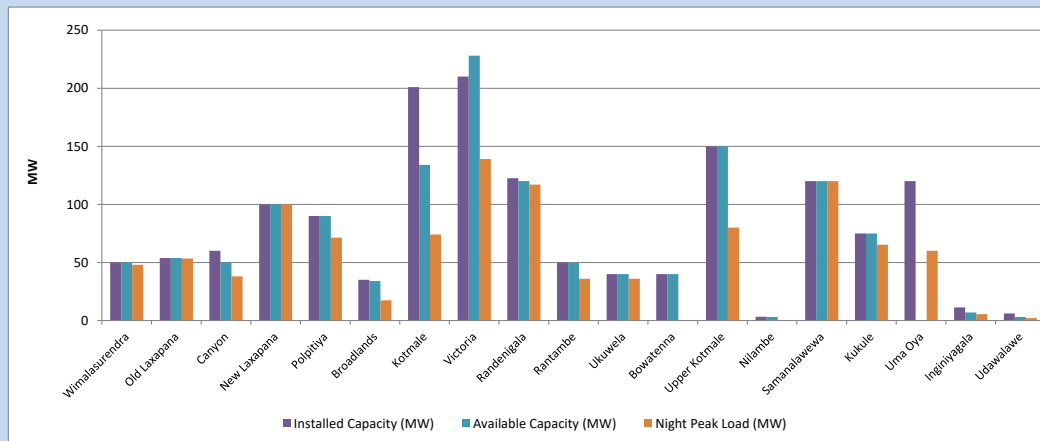


Available Generation is estimated based on plant availability at 6.00am on
Broadlands power plant is operating in the Commissioning Stage

May 4, 2024

8. Major Hydro Plant Loading at Night Peak

May 3, 2024



Plant availability is recorded at 6.00 am on
Broadlands power plant is operating in the Commissioning Stage

May 4, 2024

9. Summary of Major Plant performance

Table 05

Plant	Maximum Available Total Capacity	Plant Availability	Night peak Load	Plant Dispatch
	(MW)	(MW)	(MW)	(MWh)
Wimalasurendra	50	50	48	234
Old Laxapana	54	54	53	550
Canyon	60	50	38	420
New Laxapana	100	100	100	1,335
Polpitiya	90	90	71	930
Broadlands	35	34	17	174
Kotmale	201	134	74	1,120
Victoria	210	228	139	2,263
Randenigala	123	120	117	1,318
Rantambe	50	50	36	520
Ukuwela	40	40	36	580
Bowatenna	40	40	0	0
Upper Kotmale	150	150	80	276
Nilambe	3	3	0	0
Samanalawewa	120	120	120	2,494
Kukule	75	75	65	295
Uma Oya (Testing)	120	0	60	316
Inginiyagala	11	7	5	117
Udawalawe	6	3	2	77
Puttalam Coal I	270	270	268	6,451
Puttalam Coal II	270	270	270	6,533
Puttalam Coal III	270	270	273	6,563
KPS Small GTs	54	0	0	0
KPS GT 7	115	115	22	1,493
KCCP	165	147	144	3,550
Sapugaskanda A	70	32	32	671
Sapugaskanda B	72	45	54	1,094
Uthura Janani	22	16	15	362
Barge CEB	62	60	60	1,388
CEB-Hambantota	30	16	17	296
CEB-Mathugama	20	11	9	187
KCCPS -2	163	153	148	3,580
West Coast	270	0	0	0
Total	3,391	2,754	2,534	49,278

Note-

Plant availability is the availability recorded at 6 am on

May 4, 2024

Installed Capacity is sourced from CEB Annual Report- 2022

10. Contribution to the Night Peak in MW

May 3, 2024

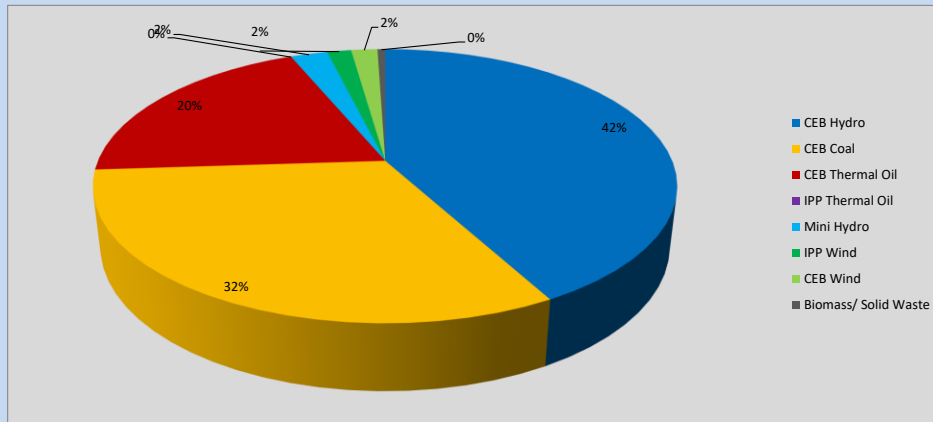


Table 06

CEB Hydro	1067	MW
CEB Coal	811	MW
CEB Thermal Oil	501	MW
IPP Thermal Oil	0	MW
Mini Hydro (Telemetered)	62	MW
IPP Wind	40.5	MW
CEB Wind	44.2	MW
Biomass/ Solid Waste	13	MW

Recorded Peak Demand Data

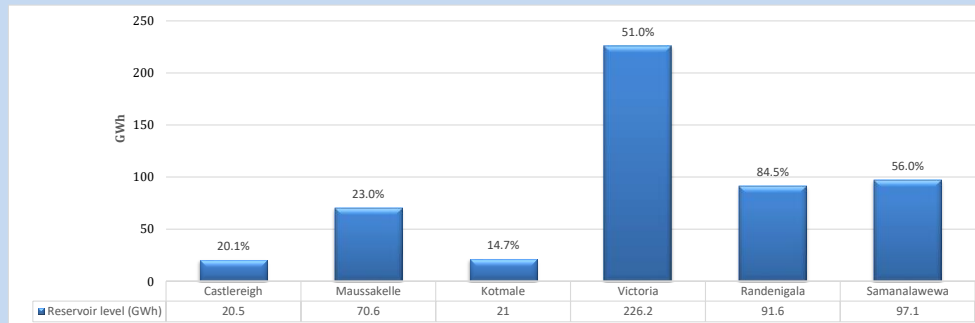
Table 07

Night Peak*	2,538	MW
Day Peak Maximum Demand	2,422	MW
Day Peak Minimum Demand	1,799	MW
Off Peak Minimum Demand	1,636	MW

Above figures are excluding contribution from roof top solar, non telemetered solar and mini hydro plants

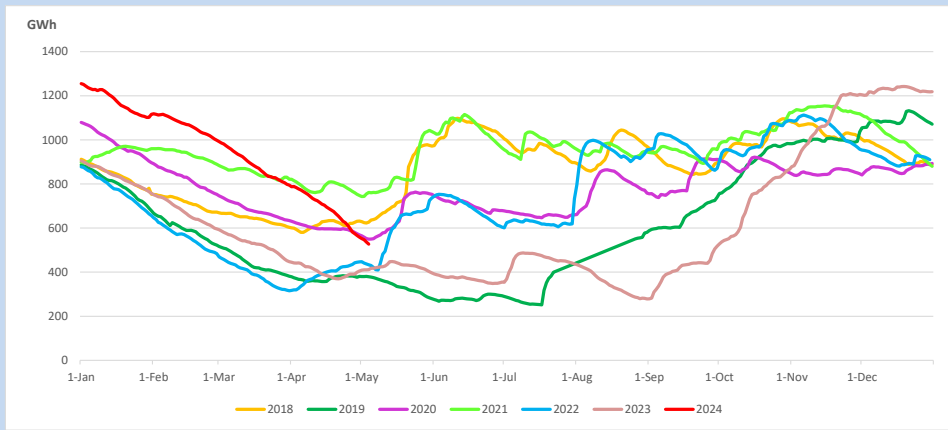
Reservoir Levels -

as at 06.00 Hr on May 4, 2024

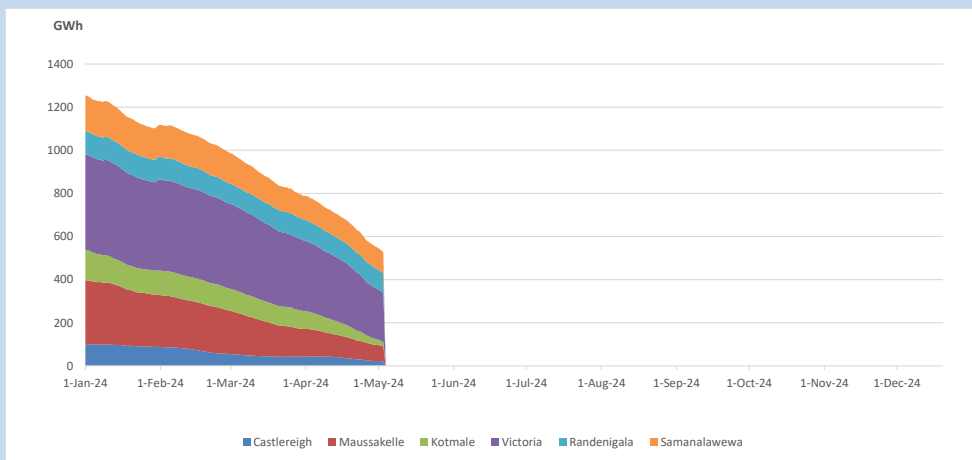


Total Reservoir Level 527 GWh
% of Total capacity 41.3%

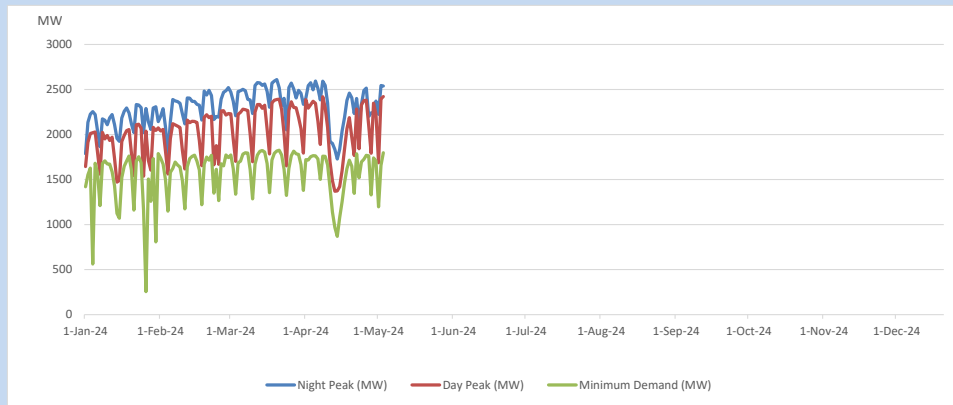
11. Comparison of Total Reservoir Storage Levels with Past Years



12. Variation of Major Hydro Reservoir Levels in the current year (GWh)



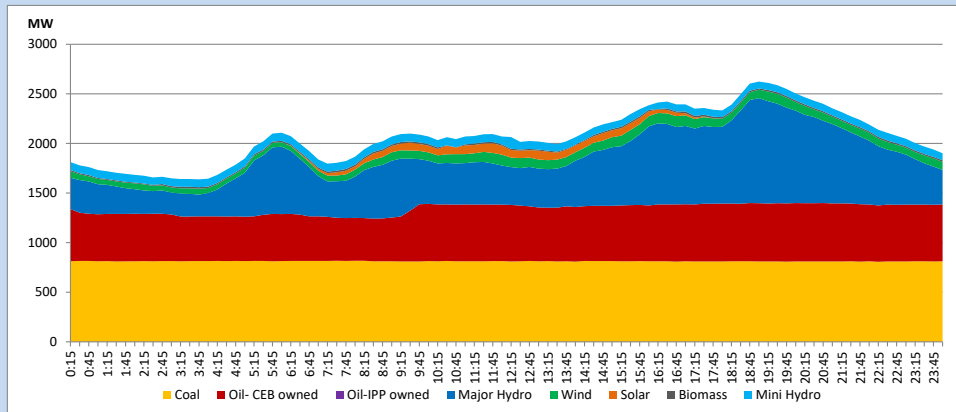
13. Variation of Demand during the current year



The above figures are excluding contribution from roof top solar, non telemetered solar and mini hydro plants

14. Daily Load Curve

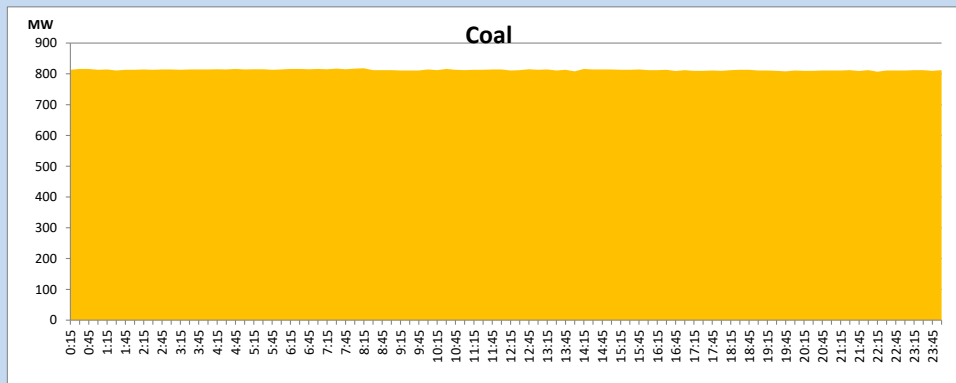
May 3, 2024



Solar and wind data is based on Telemetered Power Stations only

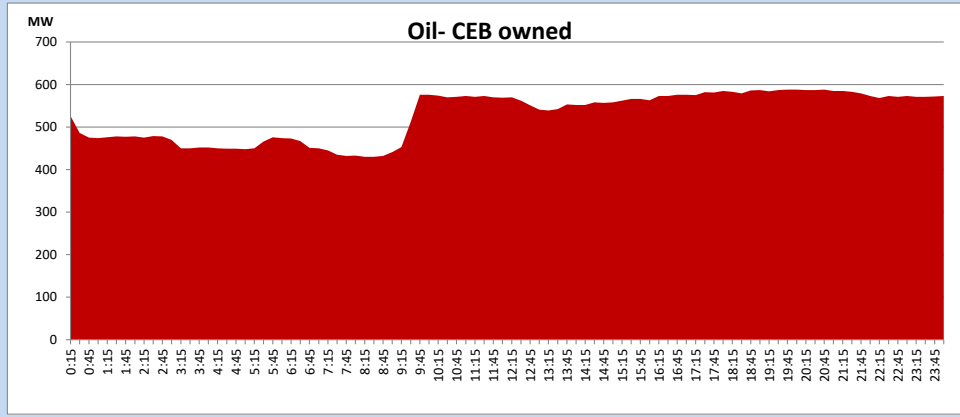
Coal Generation during

May 3, 2024



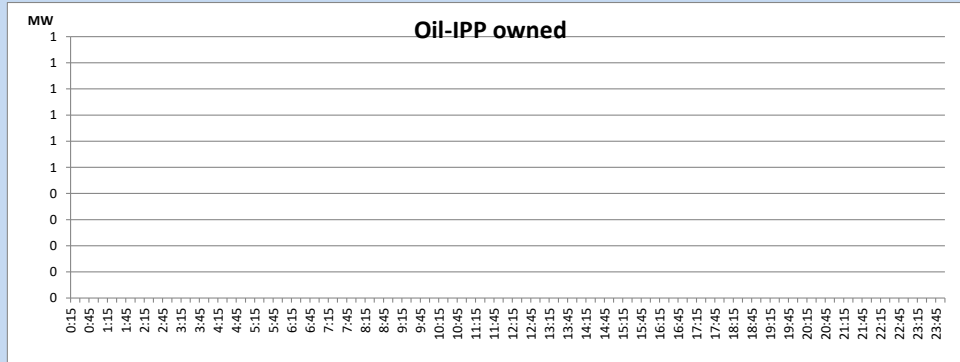
CEB Oil Plant Generation during

May 3, 2024



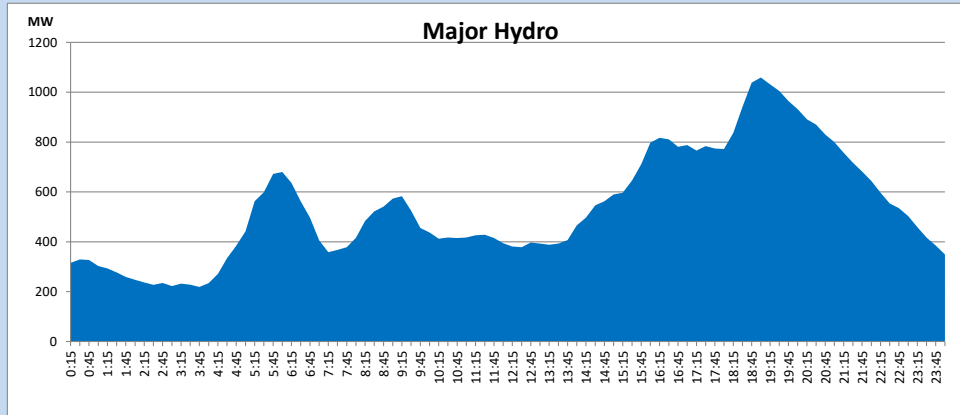
IPP Oil Plant Generation during

May 3, 2024



Major Hydro Generation during

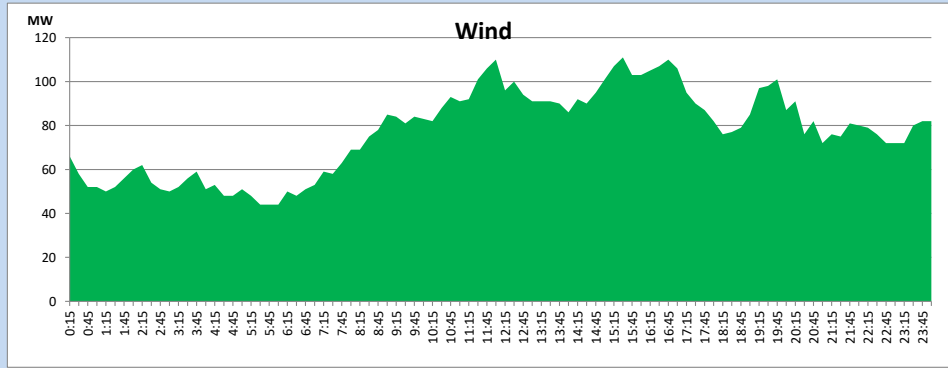
May 3, 2024



Wind Generation during

May 3, 2024

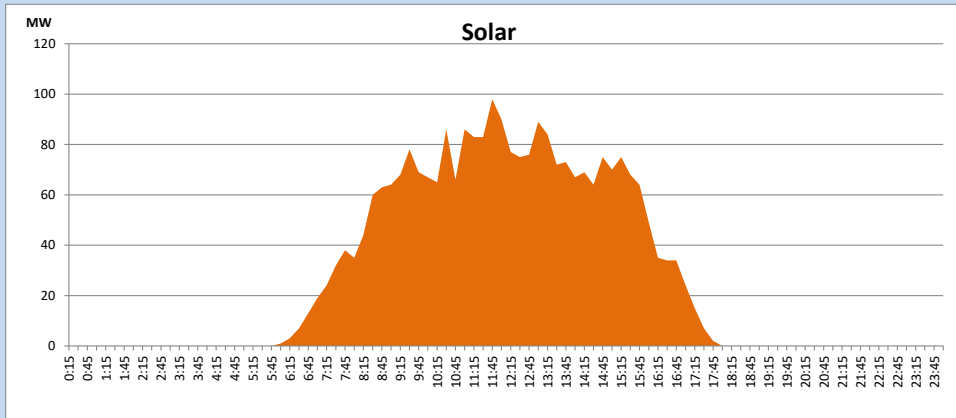
Based on Telemetered Power Stations only



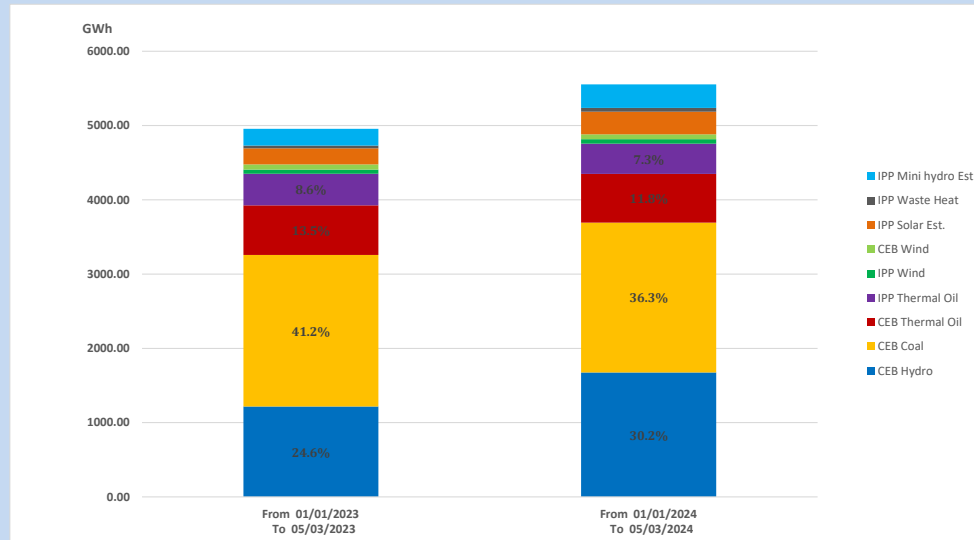
Solar Generation during

May 3, 2024

Based on Telemetered Power Stations only



15. Cumulative Dispatch Comparison with Last Year



Cumulative dispatch
 From 01/01/2023 To 05/03/2023
 From 01/01/2024 To 05/03/2024

4955 GWh
 5553 GWh

The above figures are including contribution from roof top solar, non telemetered solar and mini hydro plants)
 Unserviced energy due to power cuts has been excluded in 2023

Thermal Plant Fuel types

Table 08

Power Station	Primary Fuel
CEB Thermal	
Sapugaskanda 1	Heavy Fuel
Sapugaskanda 2	Heavy Fuel
Kelanitissa Small Gas Turbines	Auto Diesel
GT 7 - Kelanitissa	Auto Diesel
Kelanitissa CCY	Naphtha or Diesel
Lakvijaya 1	Coal
Lakvijaya 2	Coal
Lakvijaya 3	Coal
Uthuru Janani	Heavy Fuel
Barge CEB	Heavy Fuel
KCCPS -2	Auto Diesel

Power Station	Primary Fuel
Private Thermal	
West Coast	Auto Diesel / Heavy Fuel

Major Incidents reported during the day

May 3, 2024

- 1) The recorded maximum day peak of 2421.6MW occurred today at 16:30hrs.
- 2) The recorded maximum daily energy occurred today as 51.89GWh.