

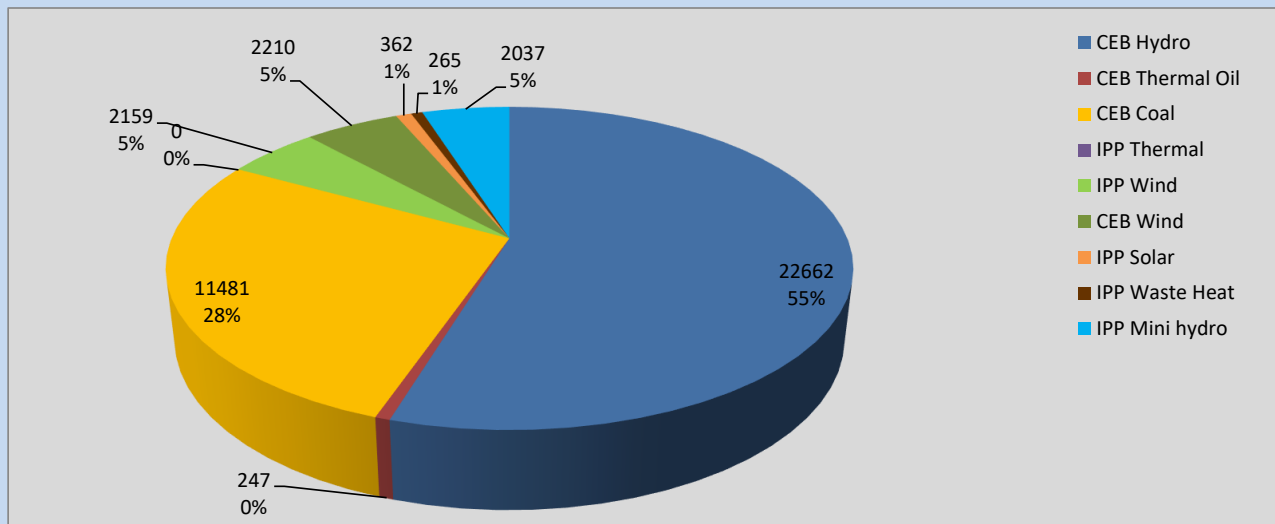
Generation and Reservoirs Statistics

August 10, 2022



PUBLIC UTILITIES COMMISSION OF SRI LANKA

Daily Generation Mix in MWh



Total Generation

41,423 MWh

Note: Above data is excluding contribution from Roof Top Solar, 1MW Solar and certain Mini Hydro plants

Cumulative Dispatch

Note: Following data is Excluding contribution from Roof Top Solar, 1MW solar and Mini Hydro plants

For Current Month

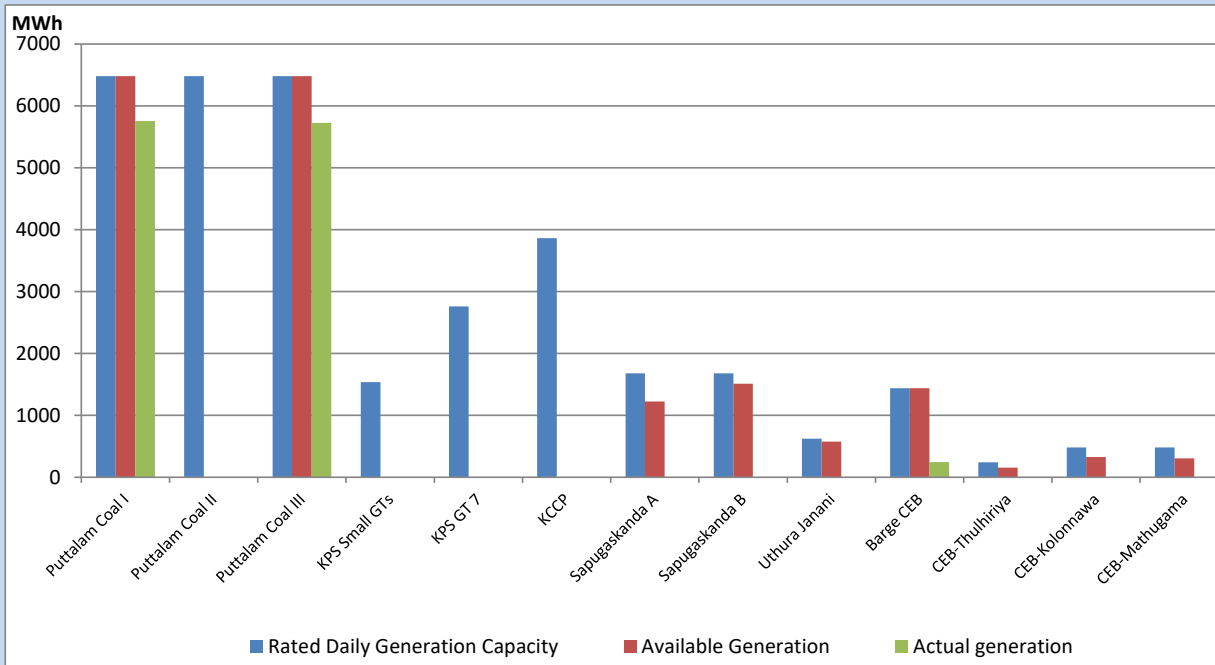
Category	Dispatch (GWh)	Percentage
CEB Hydro	204.30	53.04%
CEB Thermal Oil	4.71	1.22%
CEB Coal	109.17	28.34%
IPP Thermal	0.03	0.01%
SPP Wind	23.58	6.12%
CEB Wind	20.02	5.20%
SPP Solar	2.47	0.64%
SPP Solid Waste	0.77	0.20%
Mini Hydro	20.15	5.23%
Total	385.20	

For Current Year

Category	Dispatch (GWh)	Percentage
CEB Hydro	2,702.5	29.78%
CEB Thermal Oil	1,060.1	11.68%
CEB Coal	3,528.8	38.89%
IPP Thermal	972.5	10.72%
SPP Wind	207.5	2.29%
CEB Wind	221.3	2.44%
SPP Solar	56.4	0.62%
SPP Solid Waste	44.8	0.49%
Mini Hydro	281.1	3.10%
Total	9,074.8	

CEB owned Thermal Plant Dispatch

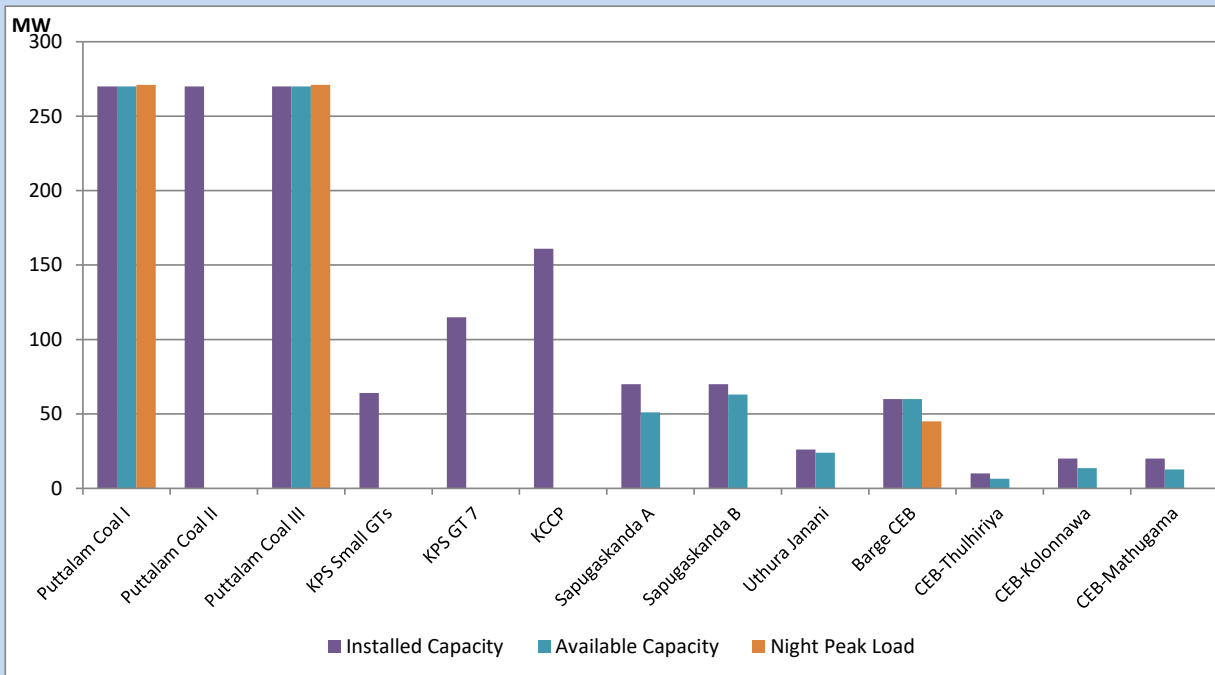
August 10, 2022



Available Generation is estimated based on plant availability at 6.00am on

August 11, 2022

CEB owned Thermal Plant Loading at the Night Peak



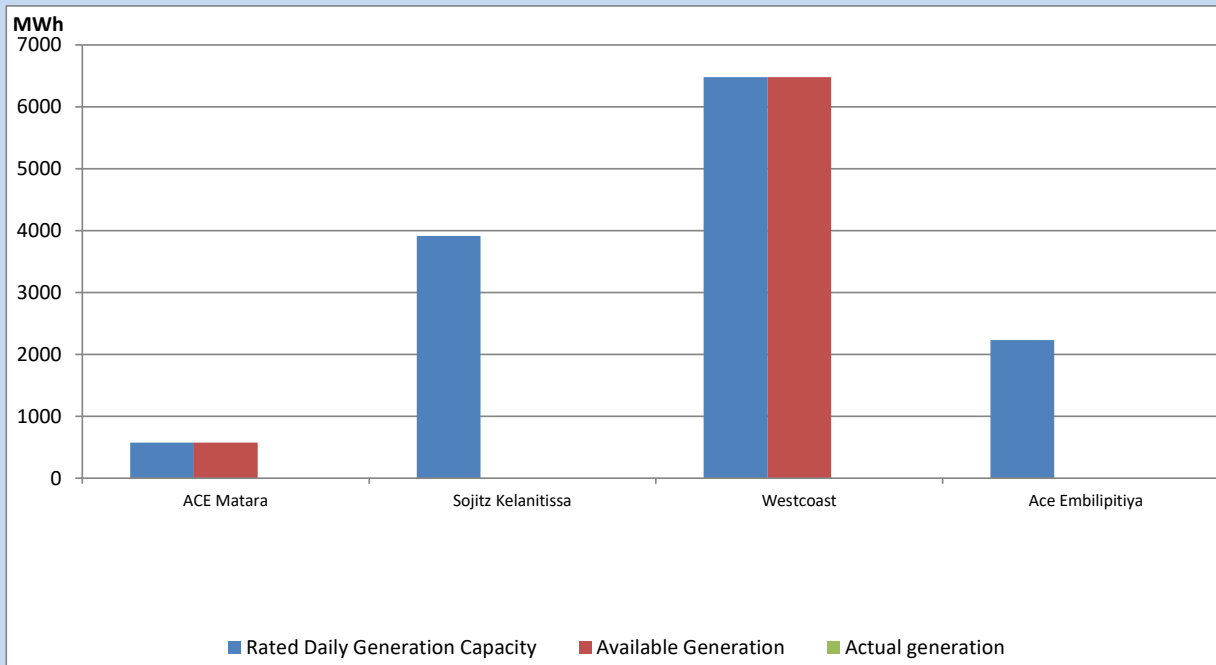
Note- Plant availability is recorded at 6.00 am on

August 11, 2022

IPP owned Thermal Plant Dispatch

August 10, 2022

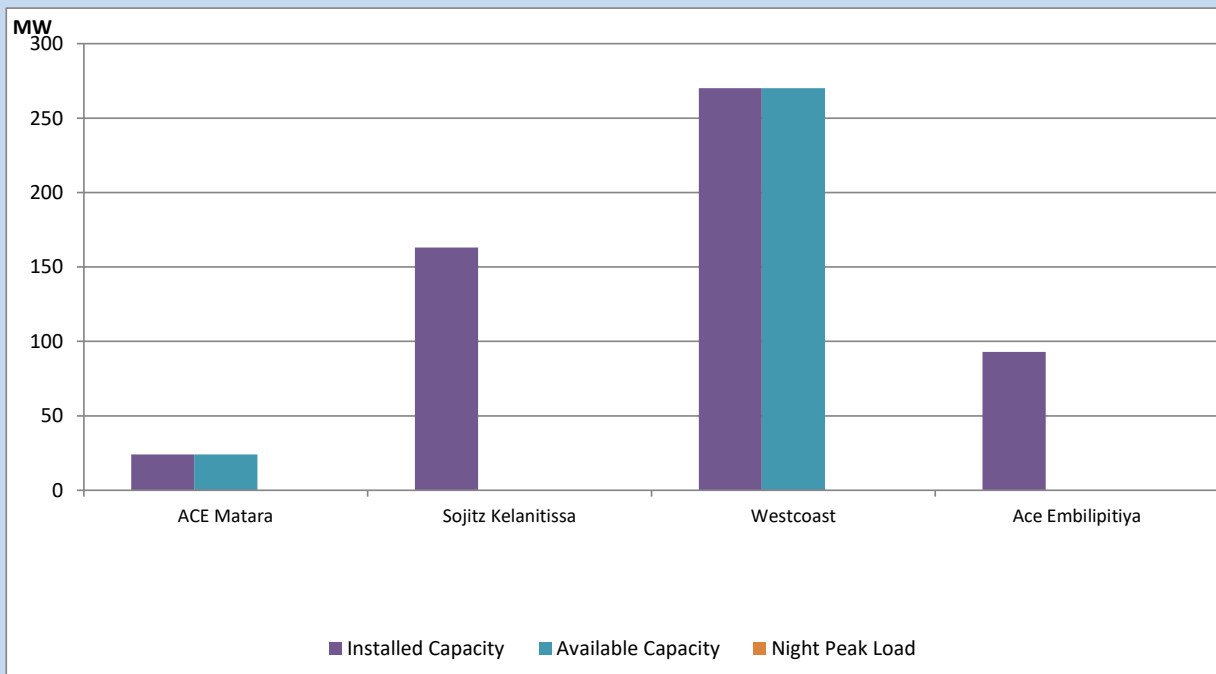
Asia Power, V Power Pallekale, Vpower Galle, V Power Horana, Vpower Hambantota, Vpower Valachchena and Altaqa Mahiyanganaya are not available due to expiration of PPAs



Available Generation is estimated based on plant availability at 6.00am on

August 11, 2022

IPP owned Thermal Plant Loading at the Night Peak

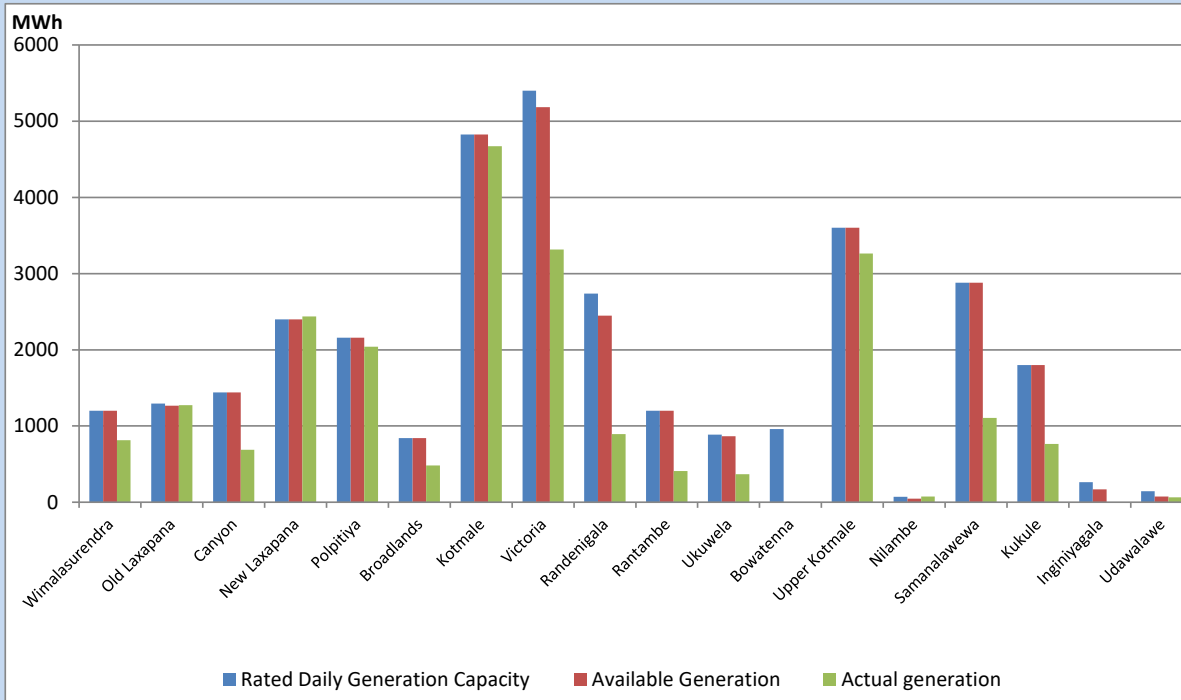


Note- Plant availability is recorded at 6.00 am on

August 11, 2022

Major Hydro Plant Dispatch

August 10, 2022

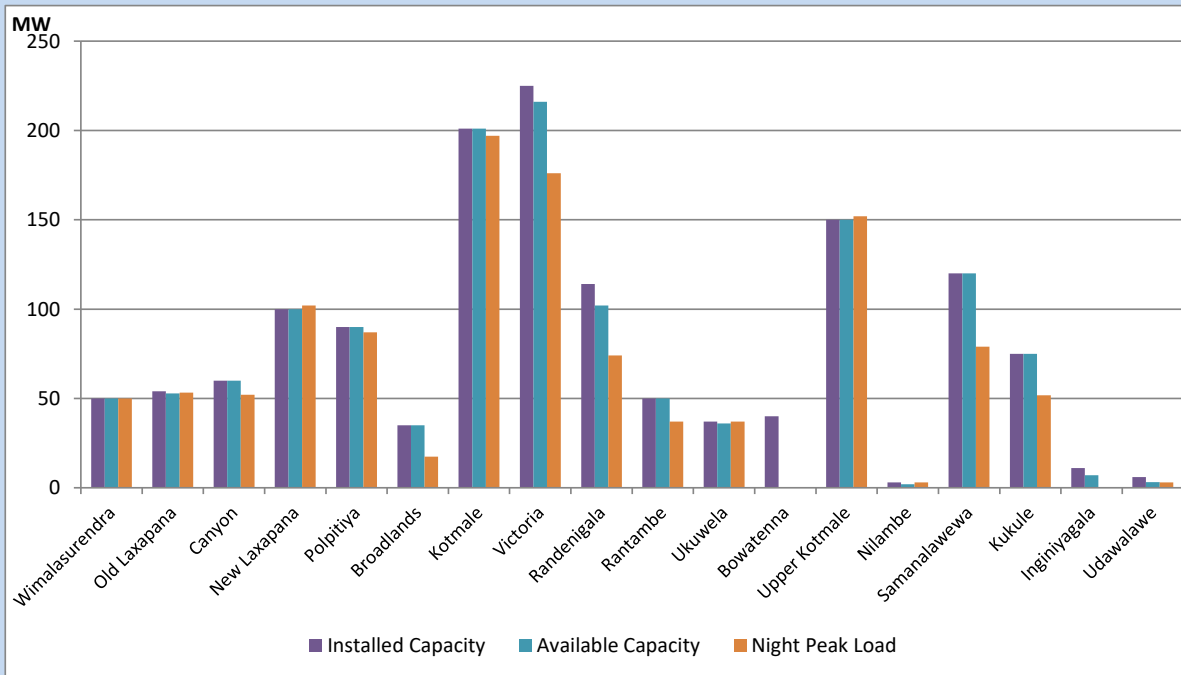


Available Generation is estimated based on plant availability at 6.00am on August 11, 2022
 Broadlands power plant is operating in the Commissioning Stage

August 11, 2022

Major Hydro Plant Loading at Night Peak

August 10, 2022



Note- Plant availability is recorded at 6.00 am on August 11, 2022
 Broadlands power plant is operating in the Commissioning Stage

Summary of Major Plant performance

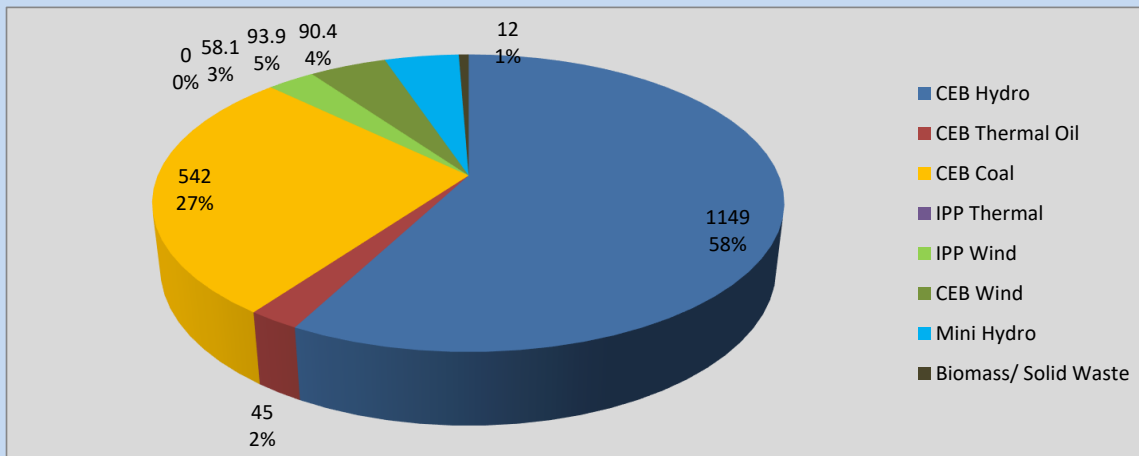
Plant	Installed Capacity	Plant Availability	Night peak Load	Plant Dispatch
	(MW)	(MW)	(MW)	(MWh)
Wimalasurendra	50	50	50	814
Old Laxapana	54	53	53	1,274
Canyon	60	60	52	688
New Laxapana	100	100	102	2,439
Polpitiya	90	90	87	2,039
Broadlands	35	35	17	483
Kotmale	201	201	197	4,670
Victoria	225	216	176	3,316
Randenigala	114	102	74	893
Rantambe	50	50	37	409
Ukuwela	37	36	37	366
Bowatenna	40	0	0	0
Upper Kotmale	150	150	152	3,264
Nilambe	3	2	3	74
Samanalawewa	120	120	79	1,105
Kukule	75	75	52	764
Inginiyagala	11	7	0	0
Udawalawe	6	3	3	64
Puttalam Coal I	270	270	271	5,757
Puttalam Coal II	270	0	0	0
Puttalam Coal III	270	270	271	5,724
KPS Small GTs	64	0	0	0
KPS GT 7	115	0	0	0
KCCP	161	0	0	0
Sapugaskanda A	70	51	0	0
Sapugaskanda B	70	63	0	0
Uthura Janani	26	24	0	0
Barge CEB	60	60	45	247
CEB-Thulhiriya	10	6	0	0
CEB-Kolonnawa	20	14	0	0
CEB-Mathugama	20	13	0	0
ACE Matara	24	24	0	0
Sojitz Kelanitissa	163	0	0	0
West Coast	270	270	0	0
ACE Embilipitiya	93	0	0	0
Total	3,397	2,415	2,017	41,423

Plant availability is the availability recorded at 6 am on

August 11, 2022

Contribution to the Night Peak in MW

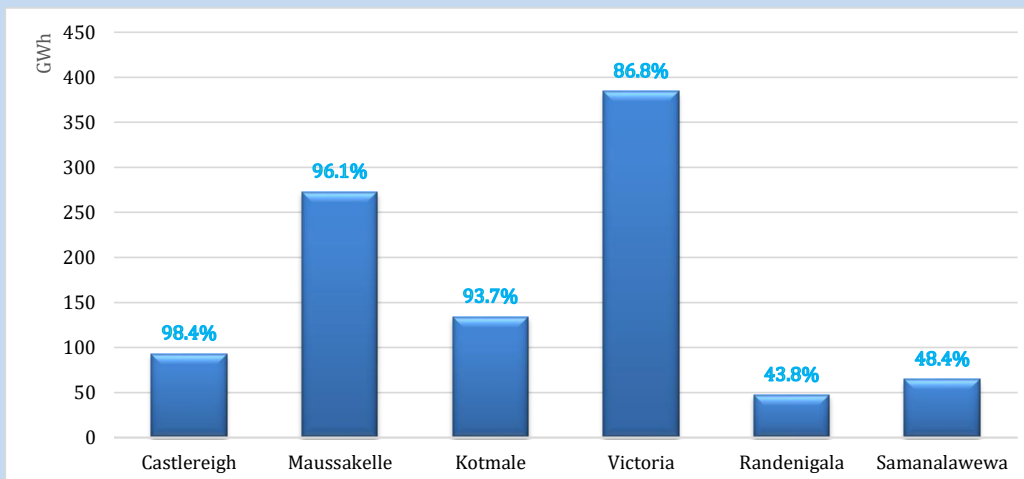
August 10, 2022



Night Peak*	1,995.4 MW
Day Peak	1,907.2 MW
Minimum Demand	1,240.8 MW

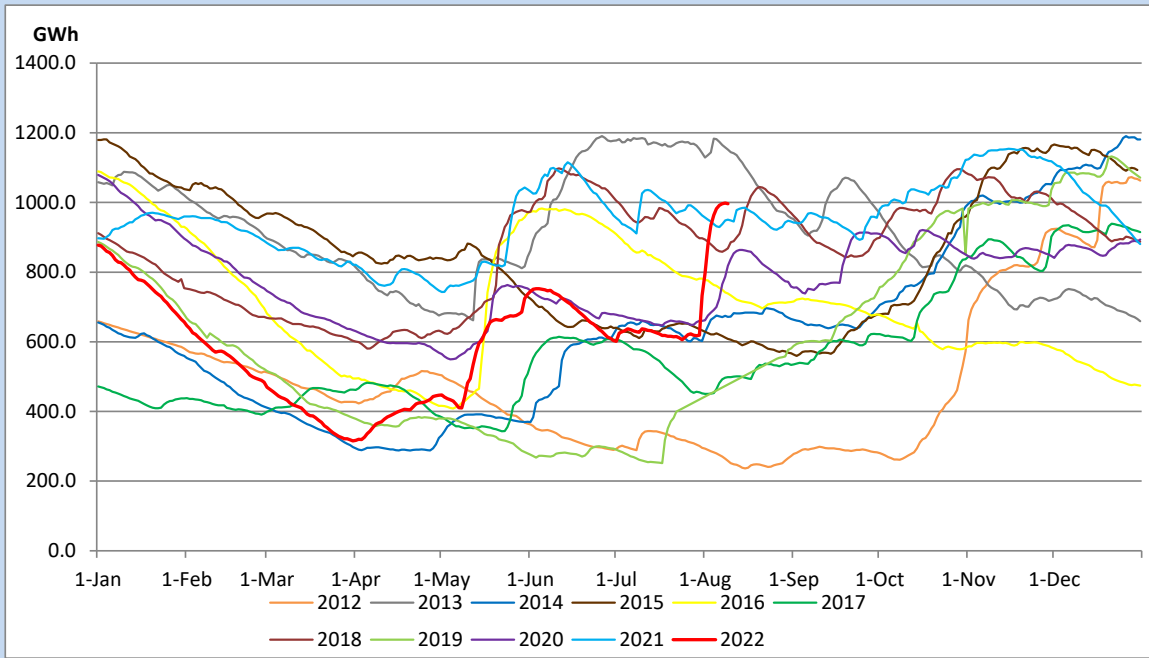
Above figures are excluding contribution from Roof Top Solar, 1MW solar, certain Wind plants and Mini Hydro plants

Reservoir Levels - as at 06.00 Hr on August 11, 2022

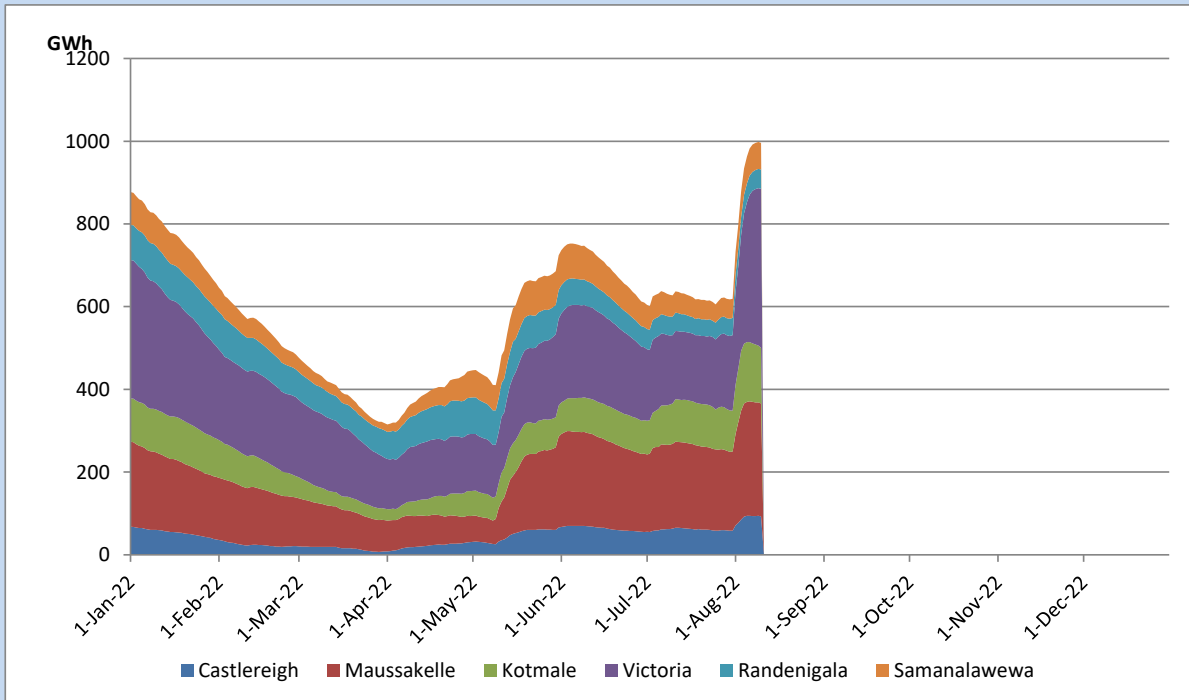


Total Reservoir Level	996.1 GWh
% of Total capacity	82.6%

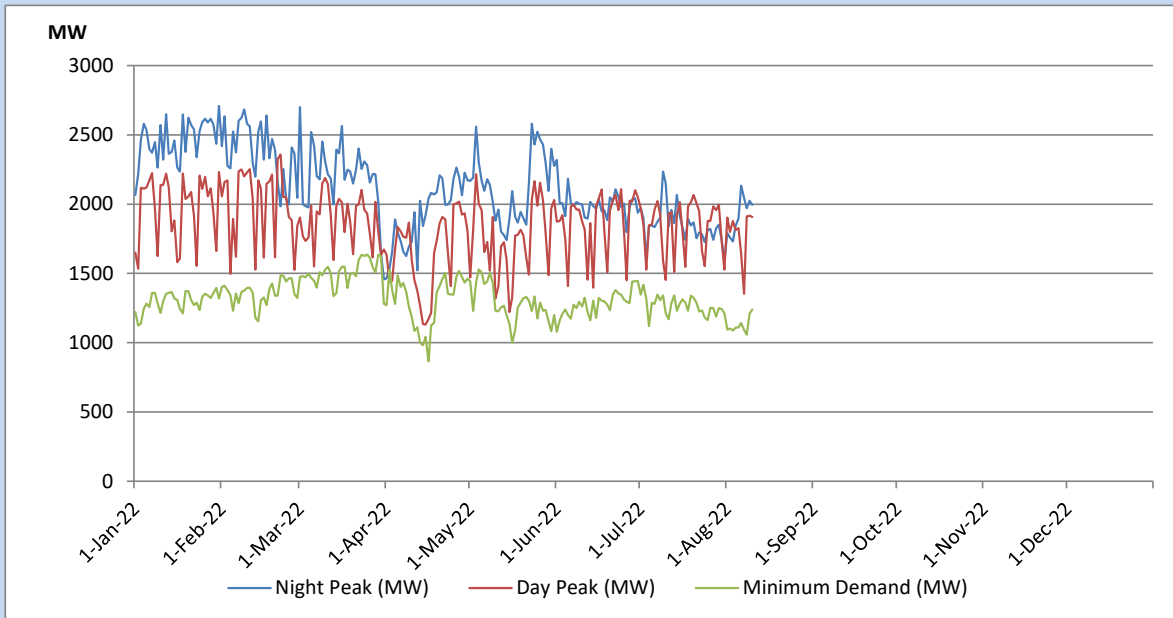
Comparison of Total Reservoir Storage Levels with Past Years



Variation of Major Hydro Reservoir Levels in the current year (GWh)



Variation of Demand during the current year

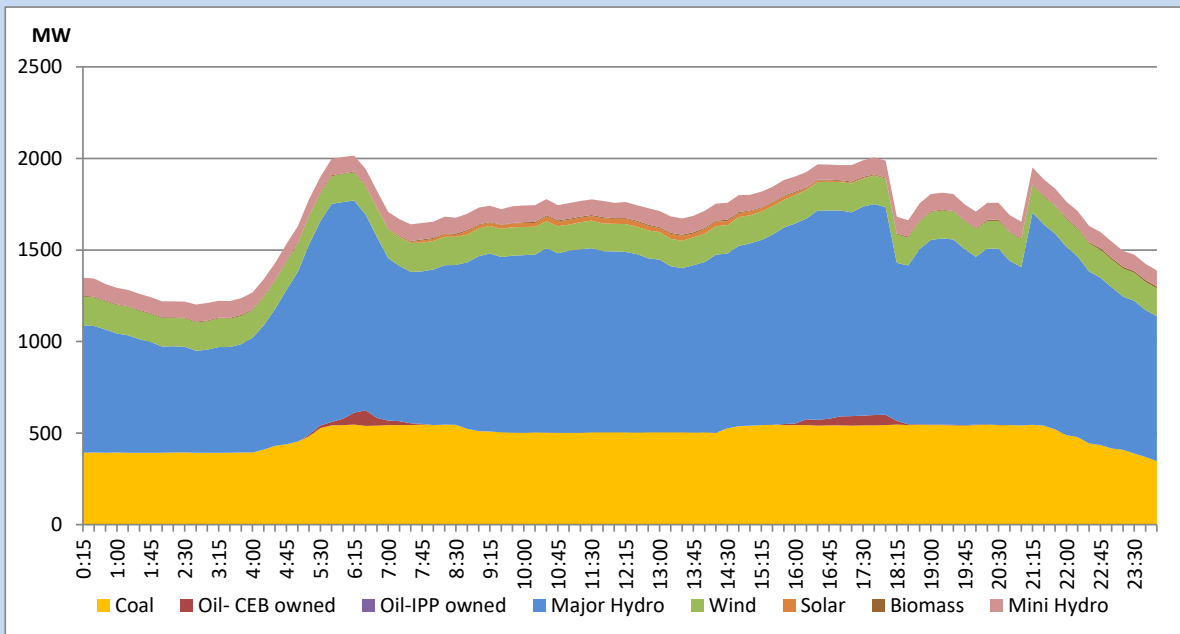


The above figures are excluding contribution from Roof Top Solar, 1MW solar, certain Wind plants and Mini Hydro plants

Daily Load Curve of the Previous day

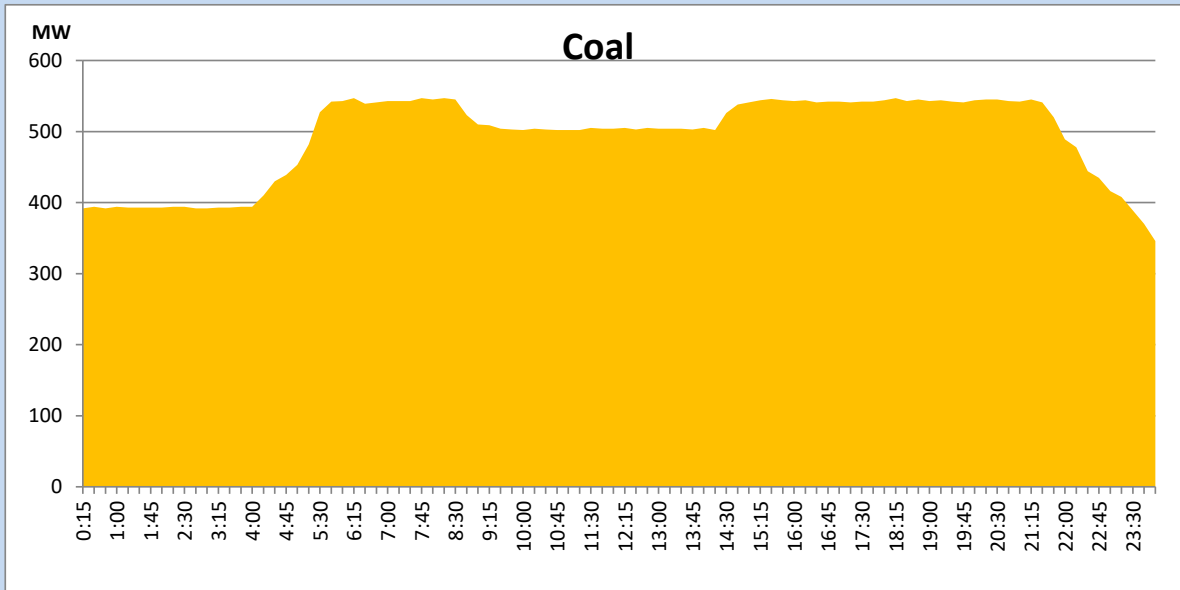
August 9, 2022

Solar and wind data is based on Telemetered Power Stations only



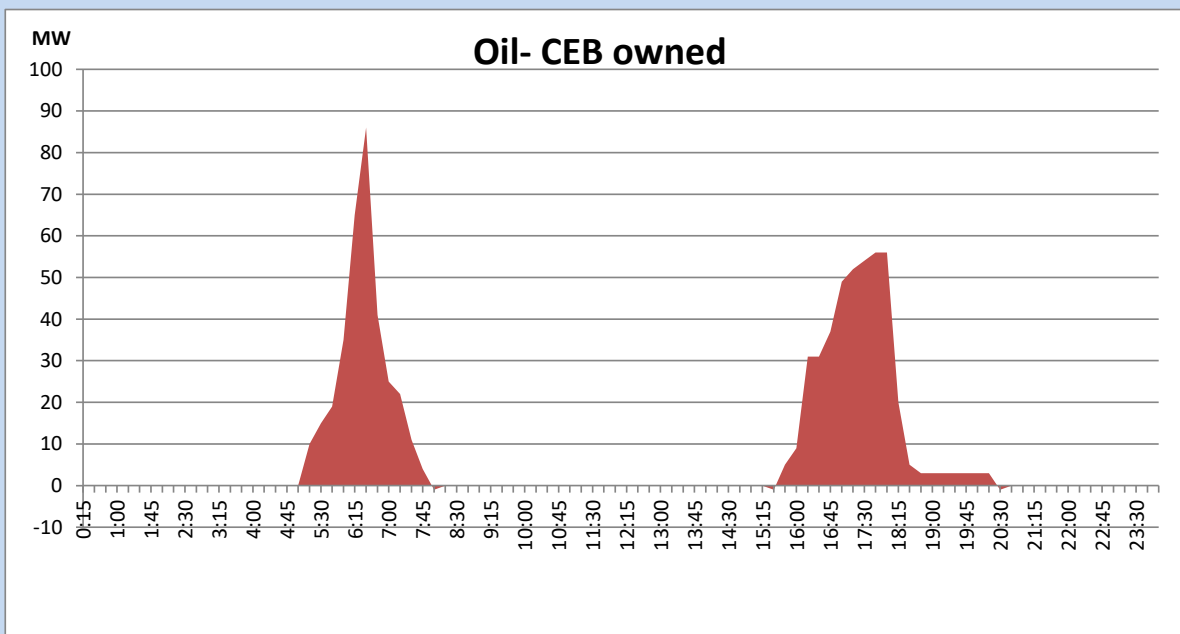
Coal Generation during the Previous day

August 9, 2022



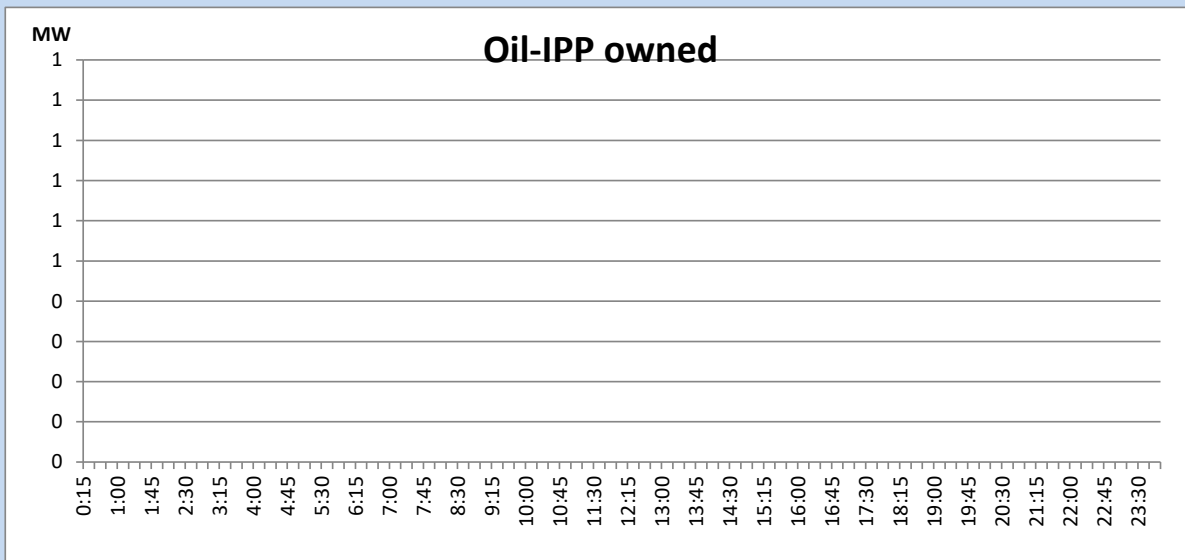
CEB Oil Plant Generation during the Previous day

August 9, 2022



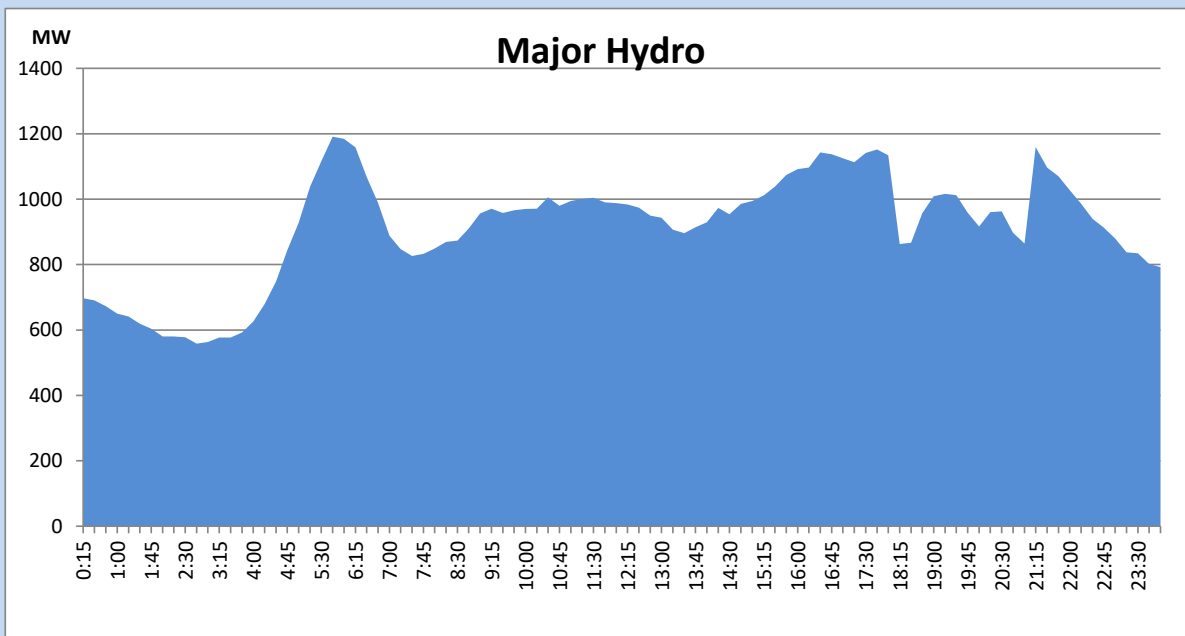
IPP Oil Plant Generation during the Previous day

August 9, 2022



Major Hydro Generation during the Previous day

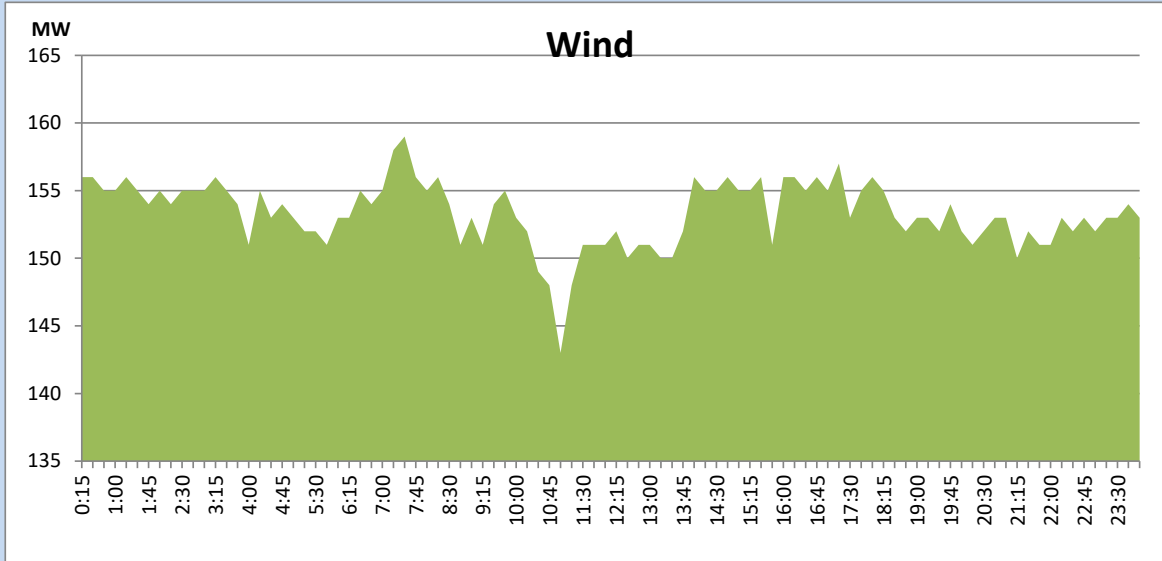
August 9, 2022



Wind Generation during the Previous day

August 9, 2022

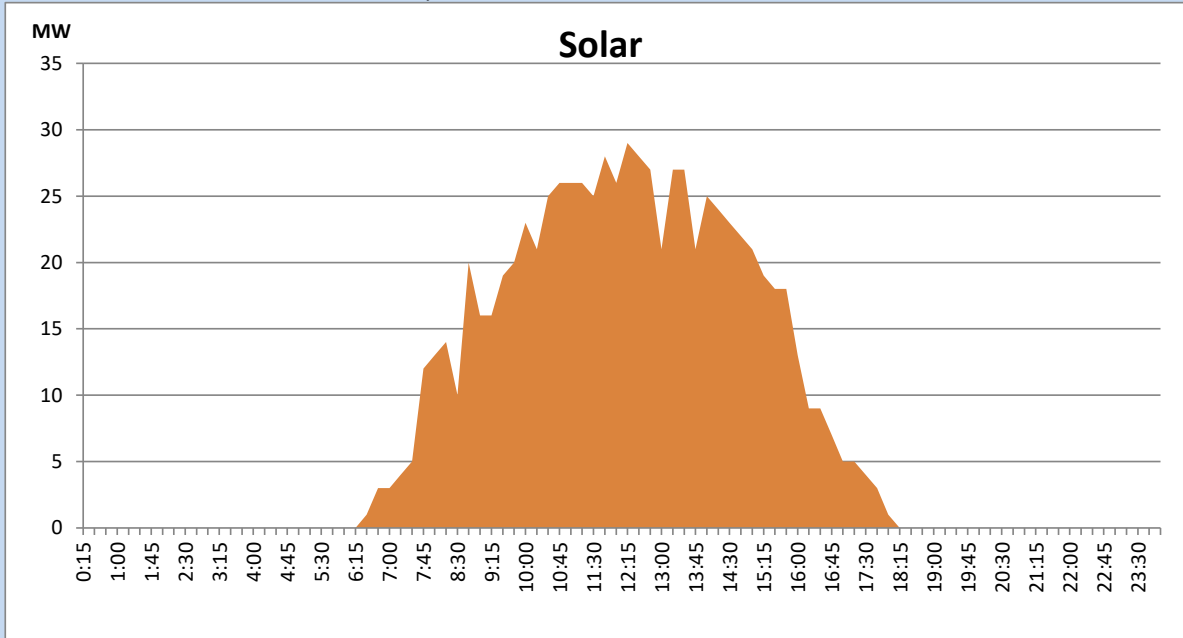
Based on Telemetered Power Stations only



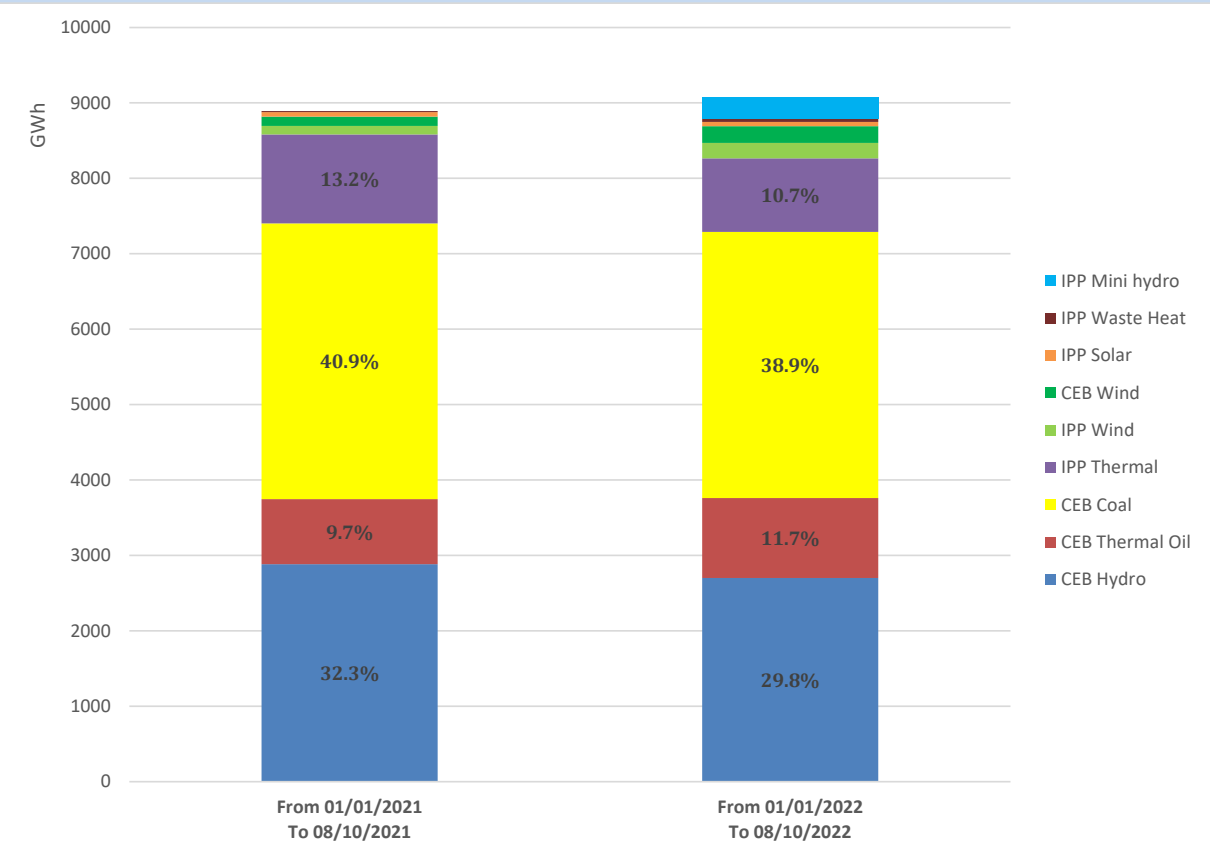
Solar Generation during the Previous day

August 9, 2022

Based on Telemetered Power Stations only



Cumulative Dispatch Comparison with Last Year



Thermal Plant Fuel types

Power Station	Primary Fuel
CEB Thermal	
Sapugaskanda 1	Heavy Fuel
Sapugaskanda 2	Heavy Fuel
Kelanitissa Small Gas Turbines	Auto Diesel
GT 7 - Kelanitissa	Auto Diesel
Kelanitissa CCY	Naphtha or Diesel
Lakvijaya 1	Coal
Lakvijaya 2	Coal
Lakvijaya 3	Coal
Uthuru Janani	Heavy Fuel
Barge CEB	Heavy Fuel

Power Station	Primary Fuel
Private Thermal	
Sojitz - Kelanitissa	Auto Diesel
West Coast	Auto Diesel / Heavy Fuel
ACE Matara	Heavy Fuel
ACE Embilipitiya	Heavy Fuel

Major Incidents during the day -as reported by CEB morning of

August 11, 2022

- 1) Rotational manual load shedding was carried out from 18:00hrs to 21:00hrs.
- 3) Norton pond spilling started at 11:25hrs and continues to present hour.
- 3) Sapugaskanda GSS - Kelaniya cct 02 tripped from Sapugaskanda GSS end and tripped and A/R from Kelaniya end due to operation of Distance protection at 00:05hrs (11/08/2022). Sapugaskanda GSS - Kelaniya cct 02 restored at 00:11hrs (11/08/2022).
- 4) N'Galle - Matara cct 01 tripped & A/R from both ends at 5:38hrs (11/08/2022) due to operation of distance protection.