

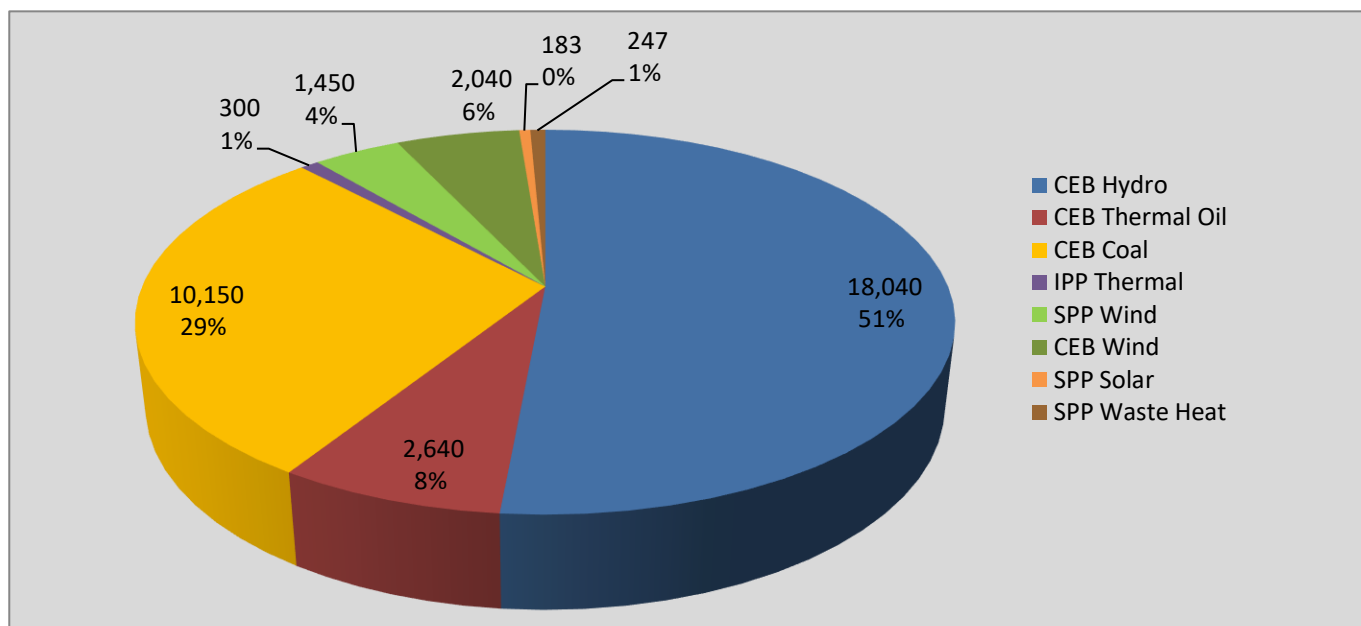
# **Generation and Reservoirs Statistics**

**July 10, 2021**



**PUBLIC UTILITIES COMMISSION OF SRI LANKA**

## Daily Generation Mix in MWh



**Total Generation** **35,050 MWh**

Note: Minihydro and Biomass and waste heat (except 10 MW WH plant at Kerawalapitiya) power plant energy is not included

## Cumulative Dispatch

Note: Minihydro and Biomass and waste heat (except 10 MW WH plant at Kerawalapitiya) power plant energy is not included

### For Current Month

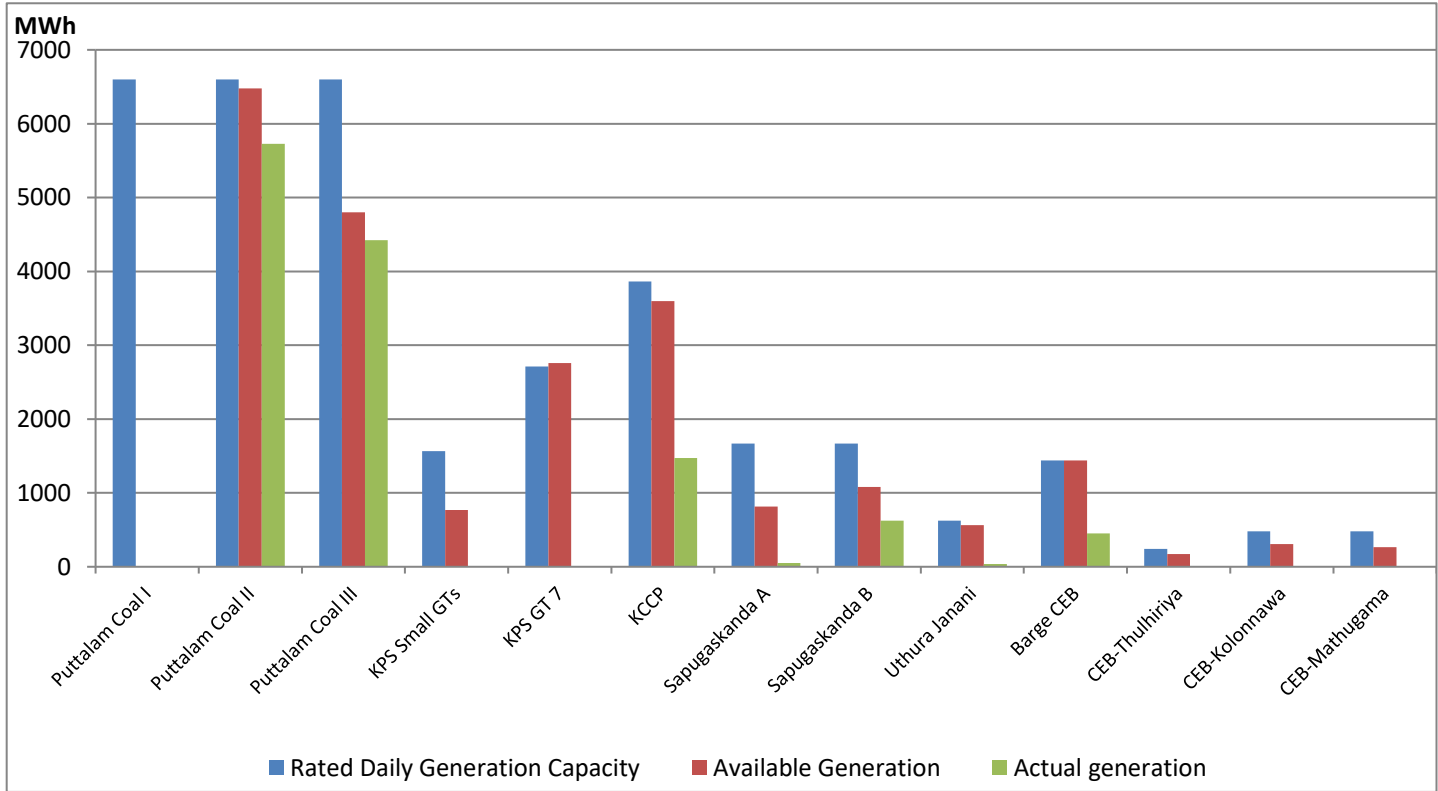
Category	Dispatch (GWh)	Percentage
CEB Hydro	168.5	41.53%
CEB Thermal Oil	43.3	10.68%
CEB Coal	126.8	31.25%
IPP Thermal	40.0	9.85%
SPP Wind	7.4	1.83%
CEB Wind	14.9	3.67%
SPP Solar	2.8	0.69%
SPP Waste Heat	2.0	0.49%
<b>Total</b>	<b>405.7</b>	

### For Current Year

Category	Dispatch (GWh)	Percentage
CEB Hydro	2,327.1	30.38%
CEB Thermal Oil	758.1	9.90%
CEB Coal	3,221.8	42.06%
IPP Thermal	1,094.5	14.29%
SPP Wind	83.9	1.09%
CEB Wind	114.6	1.50%
SPP Solar	50.6	0.66%
SPP Waste Heat	10.1	0.13%
<b>Total</b>	<b>7,660.7</b>	

## CEB owned Thermal Plant Dispatch

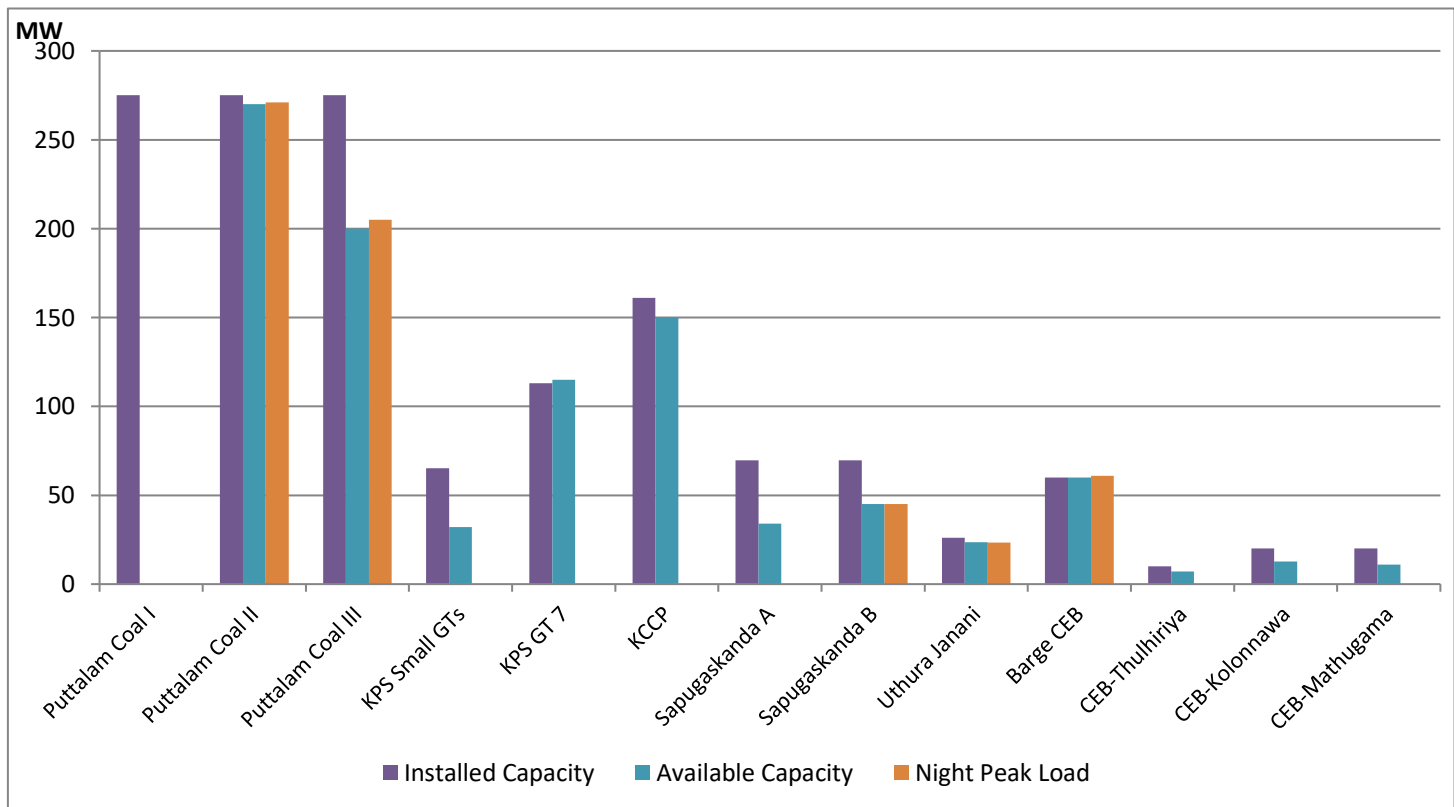
July 10, 2021



Available Generation is estimated based on plant availability at 6.00am on

July 11, 2021

## CEB owned Thermal Plant Loading at the Night Peak

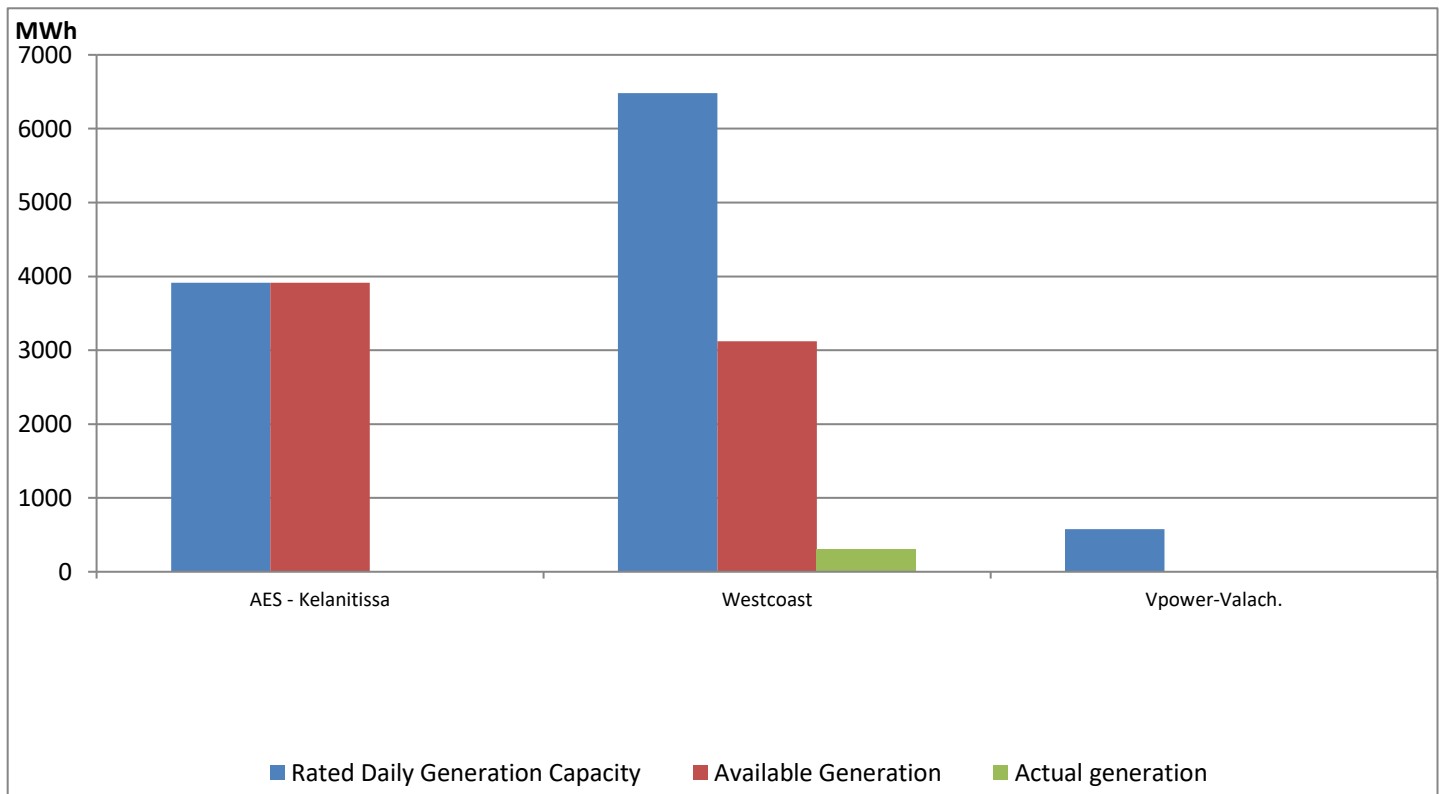


Note- Plant availability is recorded at 6.00 am on July 11, 2021

## IPP owned Thermal Plant Dispatch

July 10, 2021

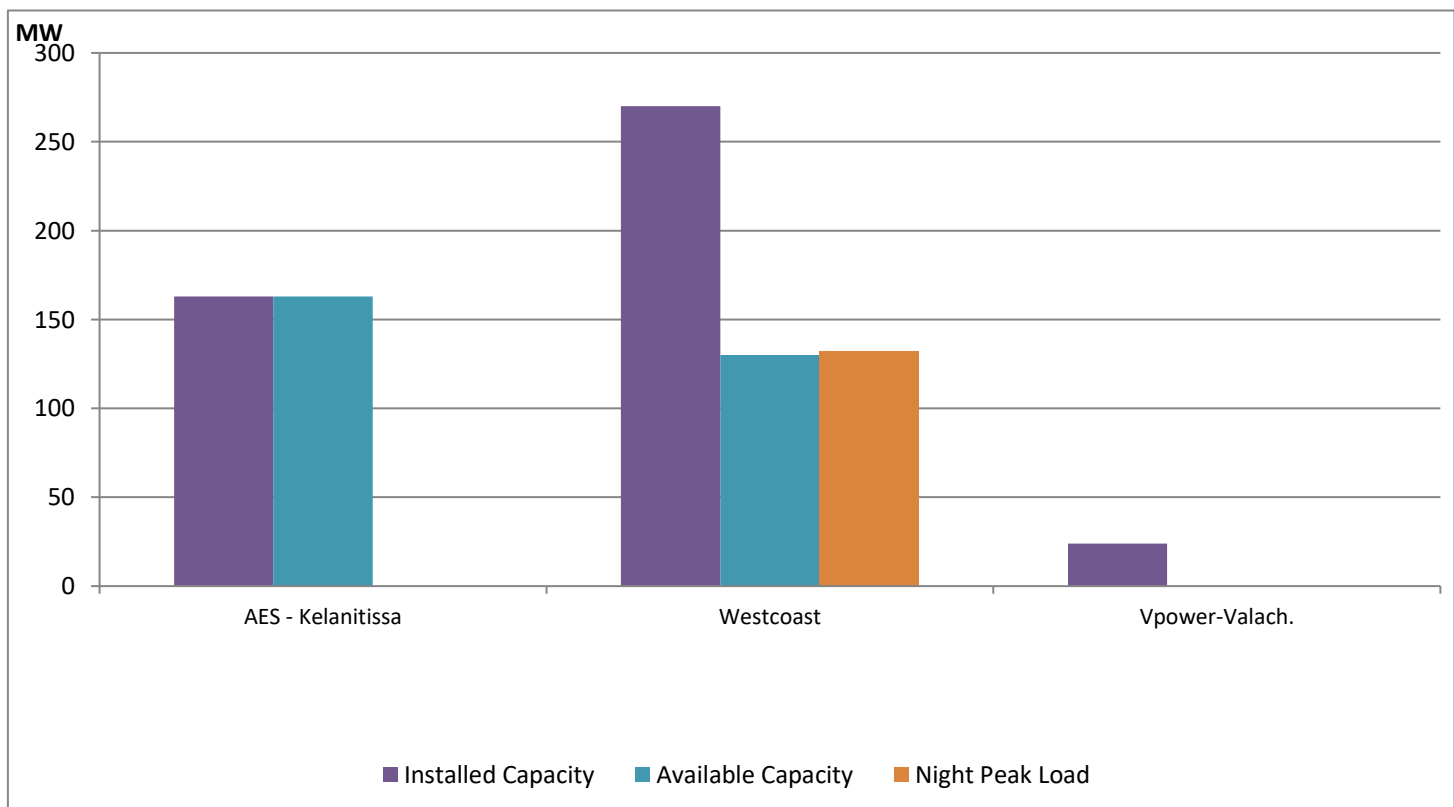
ACE Embilipitiya, ACE Matara, Asia Power, V Power Pallekale, Vpower Galle, V Power Horana, Vpower Hambantota and Altaqa Mahiyanganaya are not available due to expiration of PPAs



Available Generation is estimated based on plant availability at 6.00am on

July 11, 2021

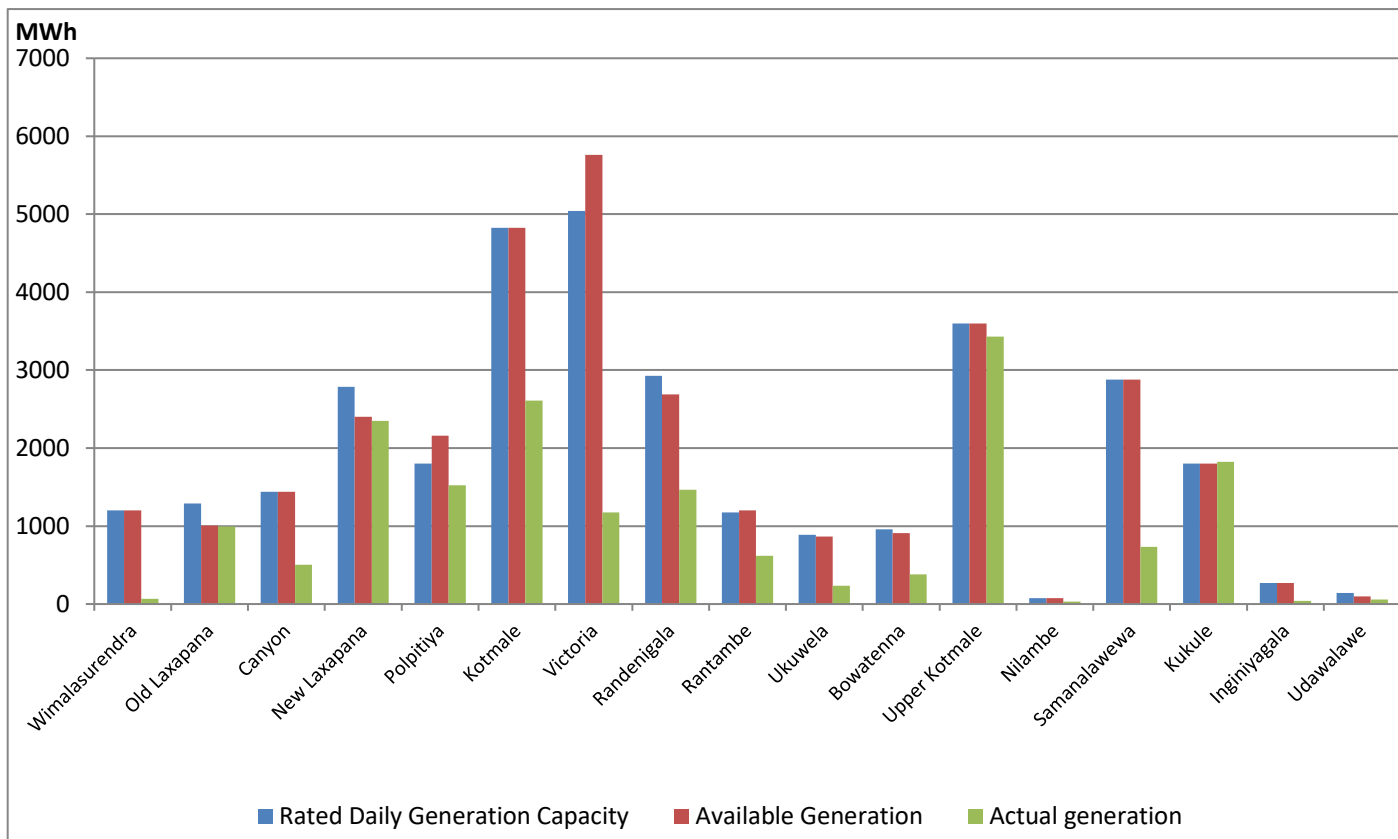
## IPP owned Thermal Plant Loading at the Night Peak



Note- Plant availability is recorded at 6.00 am on July 11, 2021

## Major Hydro Plant Dispatch

July 10, 2021

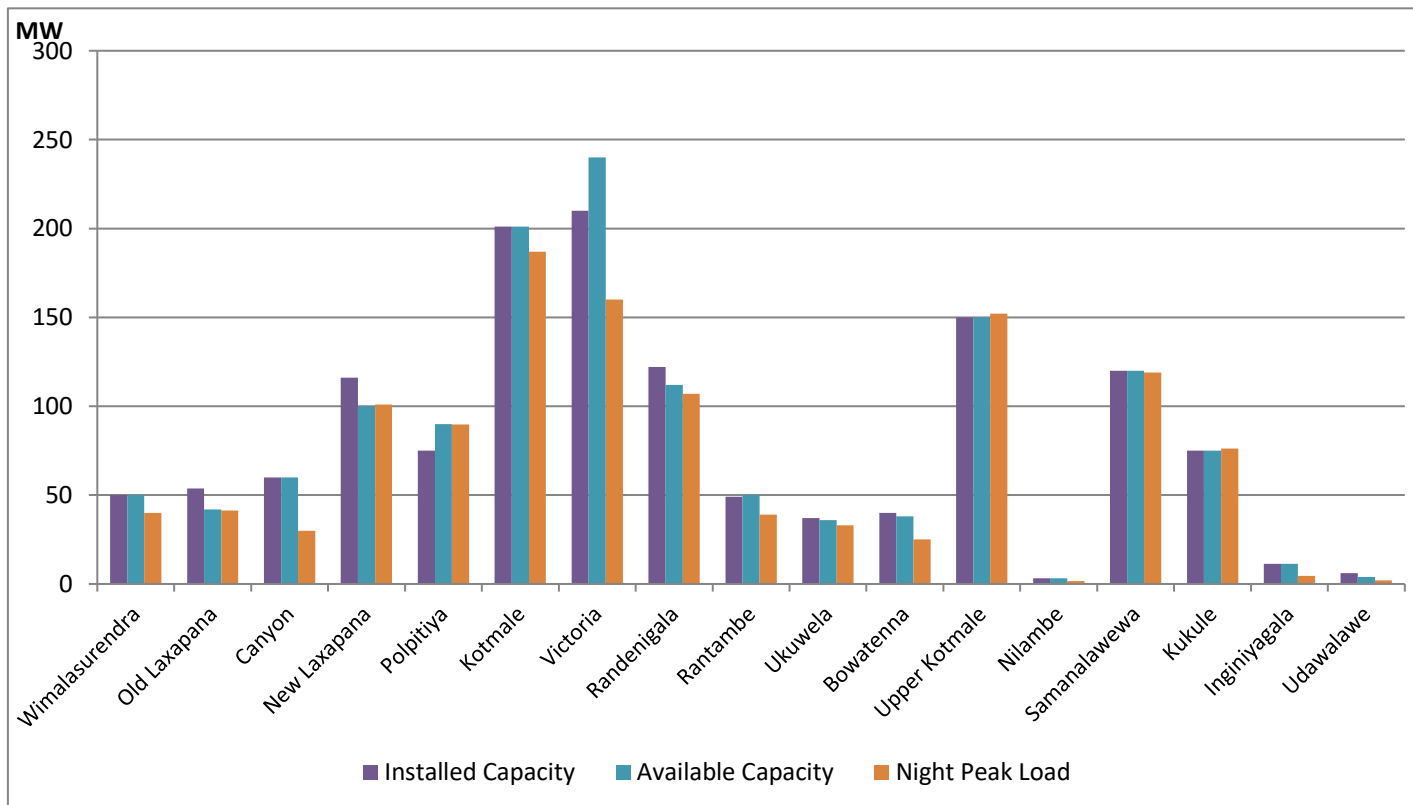


Note- Available Generation is estimated based on plant availability at 6.00am on

July 11, 2021

## Major Hydro Plant Loading at Night Peak

July 10, 2021



Note- Plant availability is recorded at 6.00 am on

July 11, 2021

Summary of Major Plant performance

Plant	Installed Capacity (MW)	Plant Availability (MW)	Night peak Load (MW)	Plant Dispatch (GWh)
Wimalasurendra	50.00	50.00	40.00	69.00
Old Laxapana	53.80	42.00	41.30	993.00
Canyon	60.00	60.00	30.00	503.00
New Laxapana	116.00	100.00	101.00	2,350.00
Polpitiya	75.00	90.00	89.70	1,523.00
Kotmale	201.00	201.00	187.00	2,610.00
Victoria	210.00	240.00	160.00	1,175.00
Randenigala	122.00	112.00	107.00	1,464.00
Rantambe	49.00	50.00	39.00	619.00
Ukuwela	37.00	36.00	33.00	236.00
Bowatenna	40.00	38.00	25.00	378.00
Upper Kotmale	150.00	150.00	152.00	3,430.00
Nilambe	3.20	3.20	1.60	32.00
Samanalawewa	120.00	120.00	119.00	732.00
Kukule	75.00	75.00	76.20	1,824.00
Inginiyagala	11.25	11.25	4.50	40.00
Udawalawe	6.00	4.00	2.00	60.00
Puttalam Coal I	275.00	-	-	-
Puttalam Coal II	275.00	270.00	271.00	5,729.00
Puttalam Coal III	275.00	200.00	205.00	4,423.00
KPS Small GTs	65.20	32.00	-	-
KPS GT 7	113.00	115.00	-	-
KCCP	161.00	150.00	-	1,472.00
Sapugaskanda A	69.60	34.00	-	52.00
Sapugaskanda B	69.60	45.00	45.00	623.00
Uthura Janani	26.01	23.50	23.30	37.00
Barge CEB	60.00	60.00	61.00	452.00
CEB-Thulhiriya	10.00	7.20	-	-
CEB-Kolonnawa	20.00	12.80	-	-
CEB-Mathugama	20.00	11.00	-	-
AES - Kelanitissa	163.00	163.00	-	-
Westcoast	270.00	130.00	132.00	302.00
Vpower-Valach.	24.00	-	-	-
Solar	58.00	-	-	185.00
Wind	128.00	-	108.00	3,493.00
MH and BM	394.00	-	160.50	Not available
Total without NCRE	3,538.46	2,635.95		

Night peak load of MH and BM only include loading of Minihydro plants of total capacity MW 206

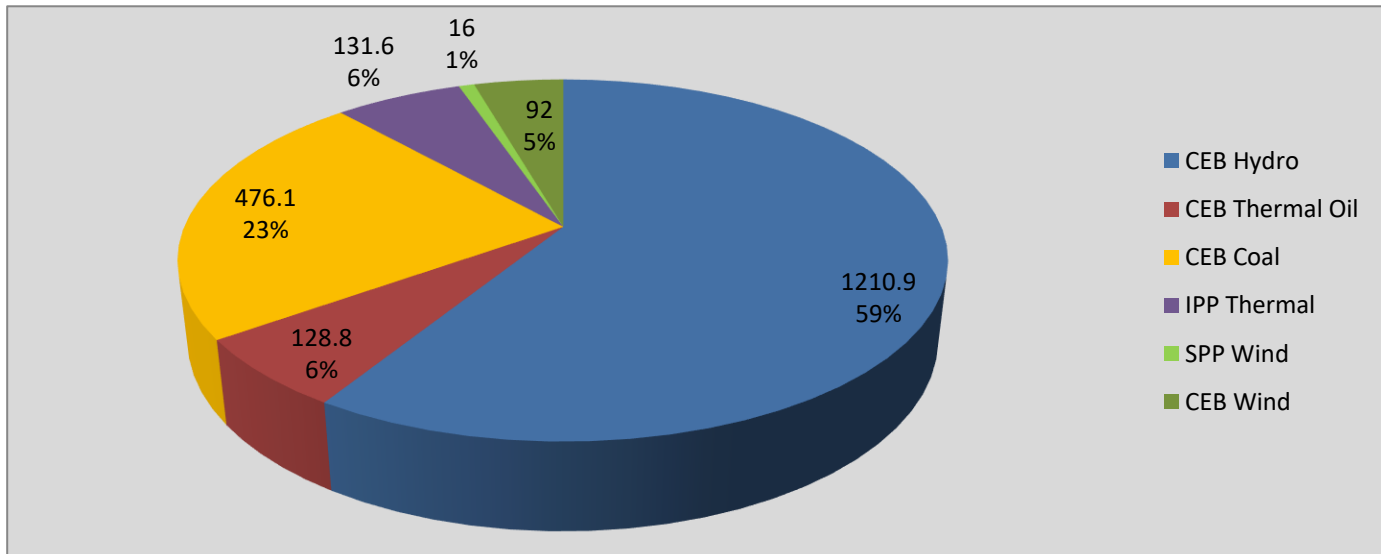
Installed capacity of Solar, wind, Mini-hydro and Biomass plants are as of end of December 2019

Plant availability is the availability recorded at 6 am on

July 11, 2021

## Contribution to the Night Peak in MW

July 10, 2021



Night Peak*	2,055.4 MW
Day Peak	1,675.5 MW
Minimum Demand	987.5 MW

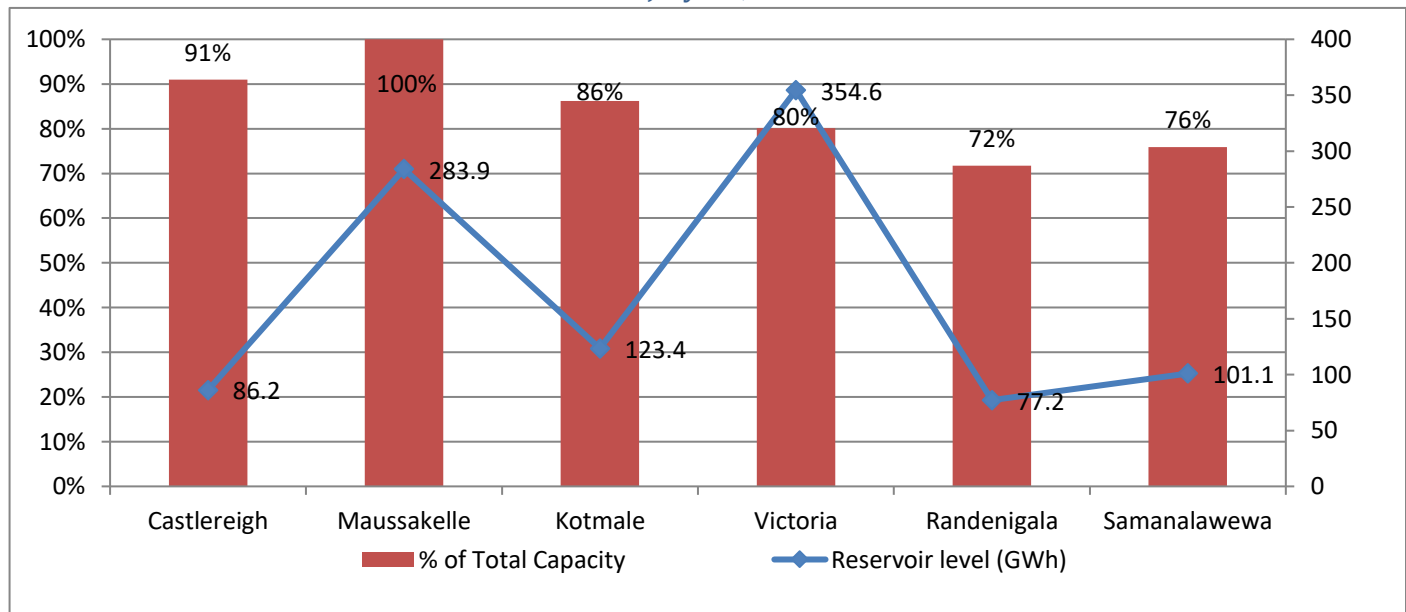
Notes:

\*The above chart pattern and night peak figure is presented excluding the contribution of Moragahakanda, other minihydro and biomass power plants

\*\*Day peak and Minimum demand includes the contribution from Moragahakanda, wind and solar plants

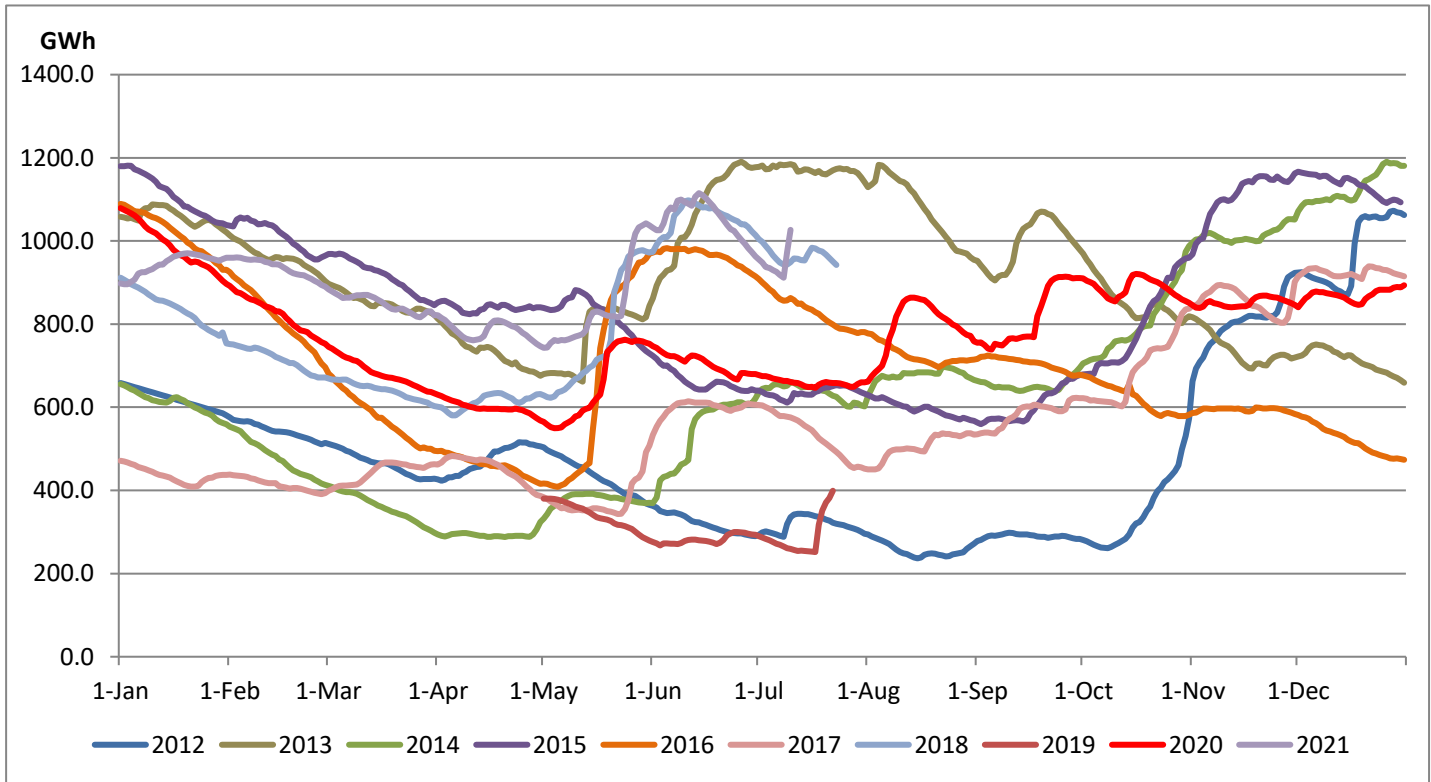
\* in addition to the night peak figure presented above, Kerawalapitiya waste heat plant, other MiniHydro and Biomass Plants of installed capacity 206.00 MW has recorded total 160.50 MW at night peak

## Reservoir Levels - as at 06.00 Hr on July 11, 2021



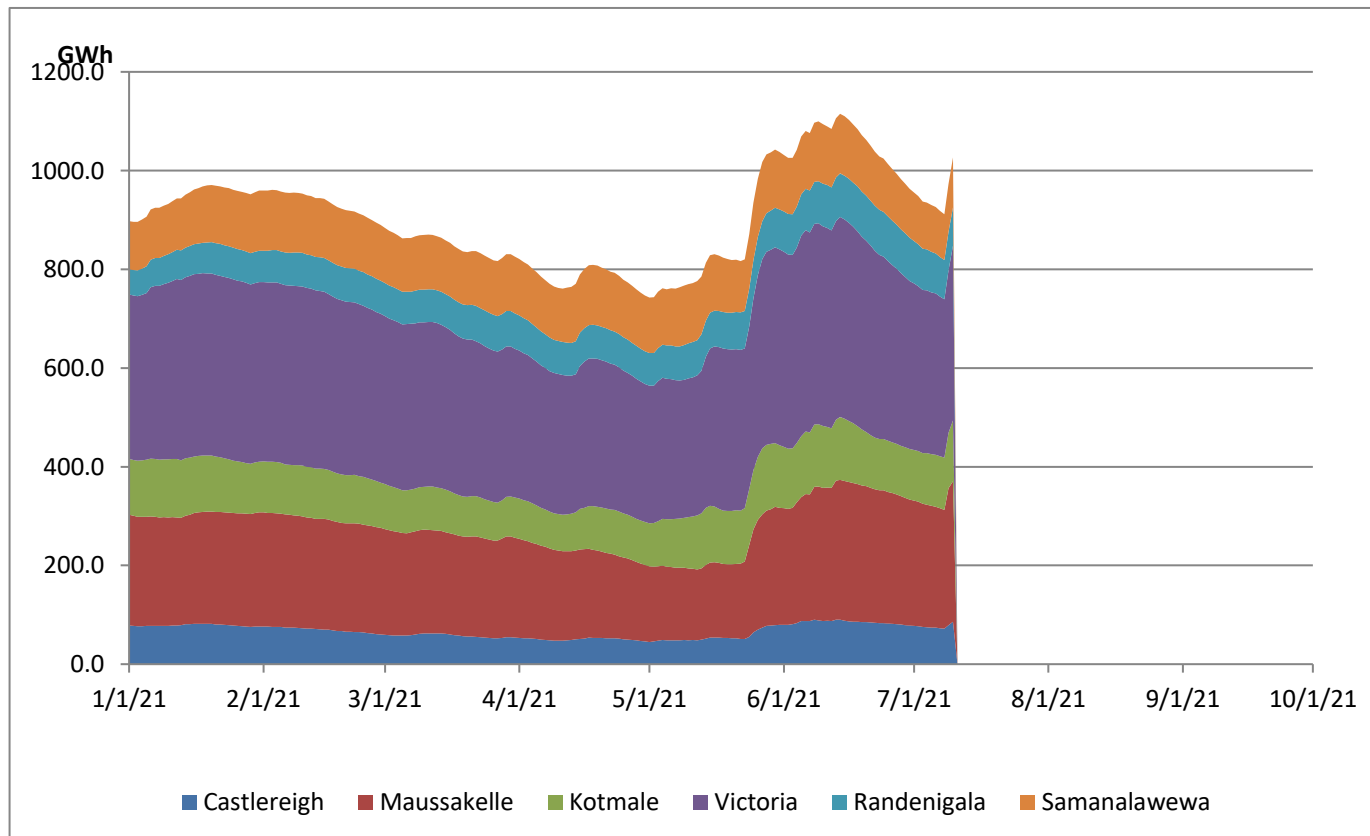
Total Reservoir Level(GWh)	1026.4
% of Total capacity	85.2%

## Comparison of Total Reservoir Storage Levels with Past Years



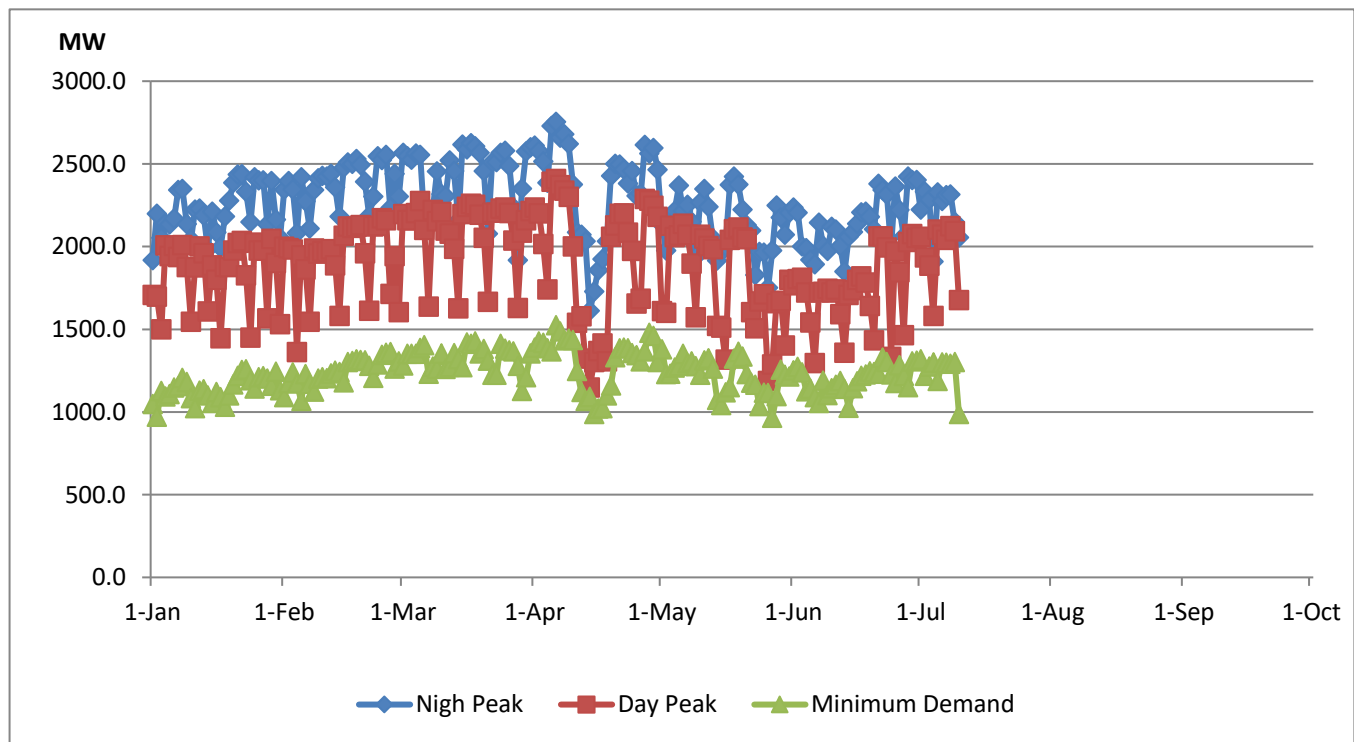
Data for 2018 and 2019 are only available for part of year.

## Variation of Major Hydro Reservoir Levels in the current year (GWh)





## Variation of Demand during the current year



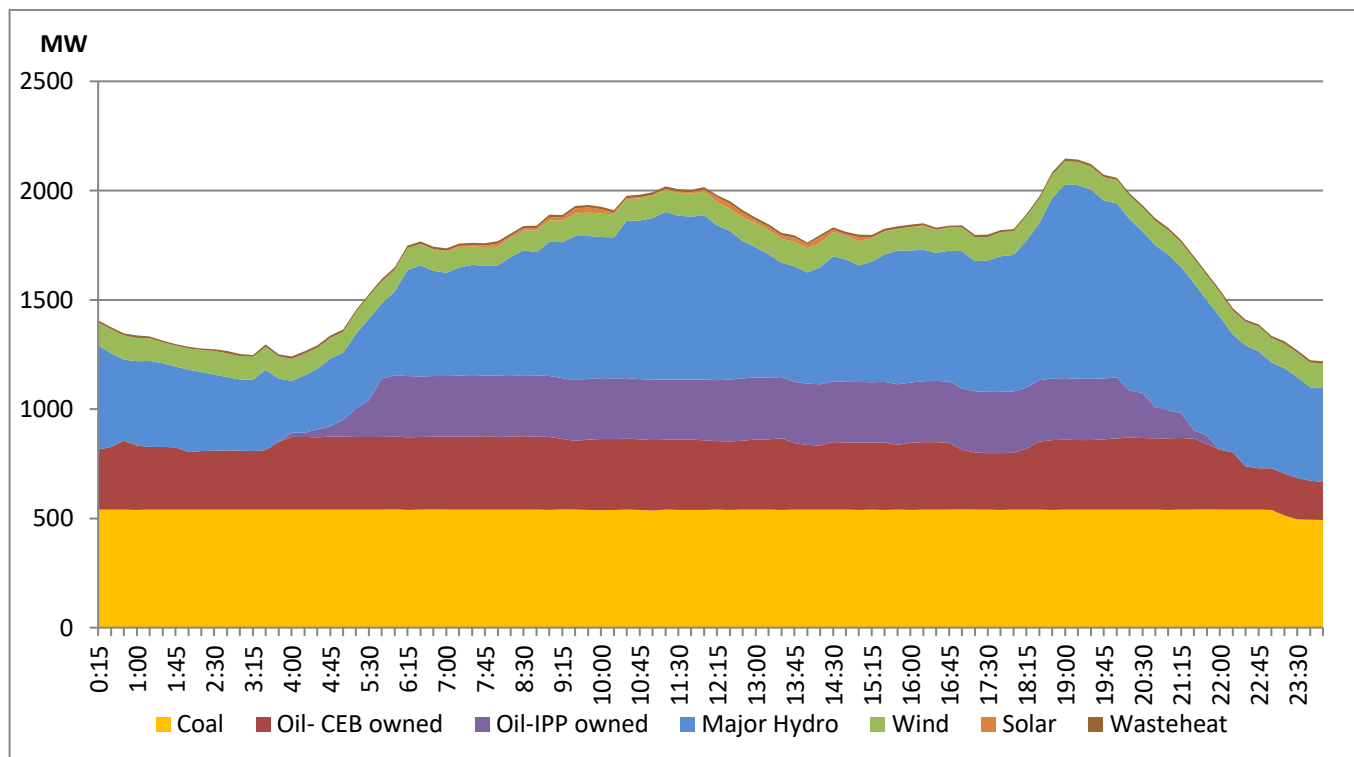
### Notes:

The night peak is excluding the contribution from Minihydro and biomass power plants  
 Day peak and minimum demand graphs includes the contribution from Moragahakanda power plant  
 All graphs include the contribution from telemetered solar and wind plants

## Daily Load Curve of the Previous day

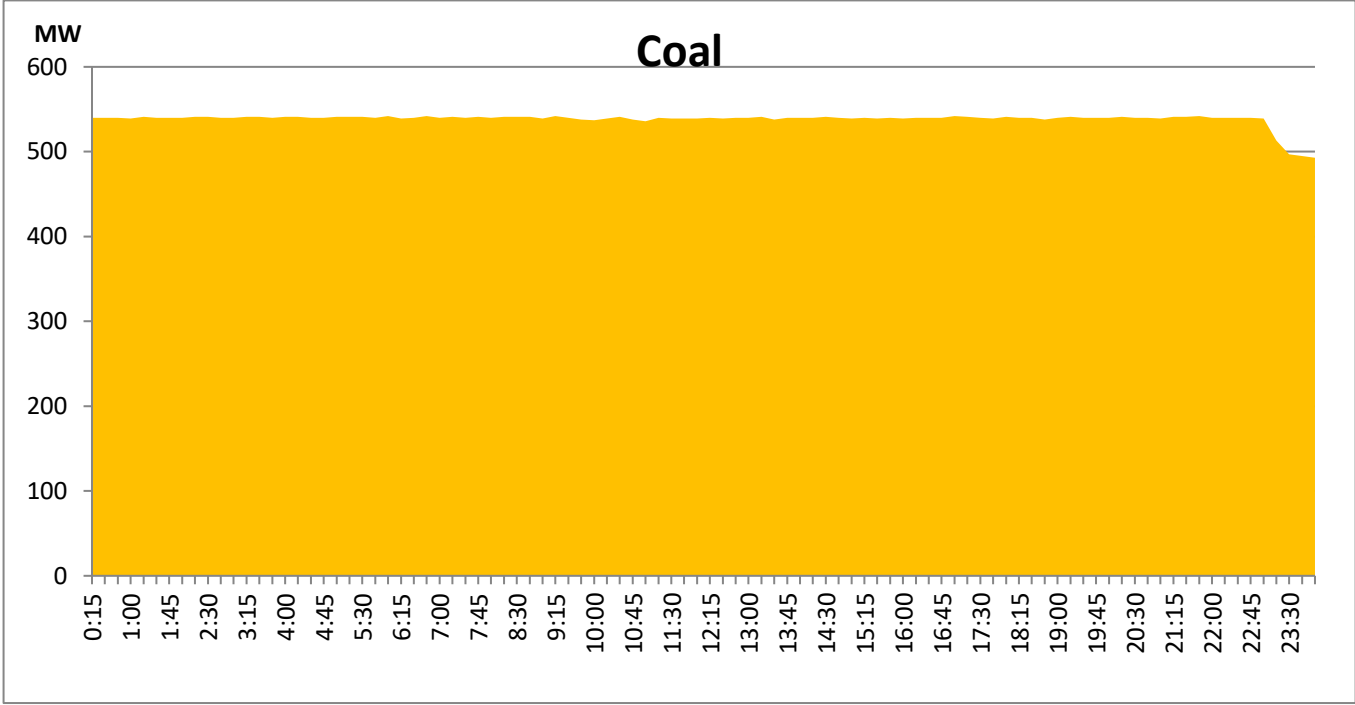
July 9, 2021

Solar and wind data is based on Telemetered Power Stations only



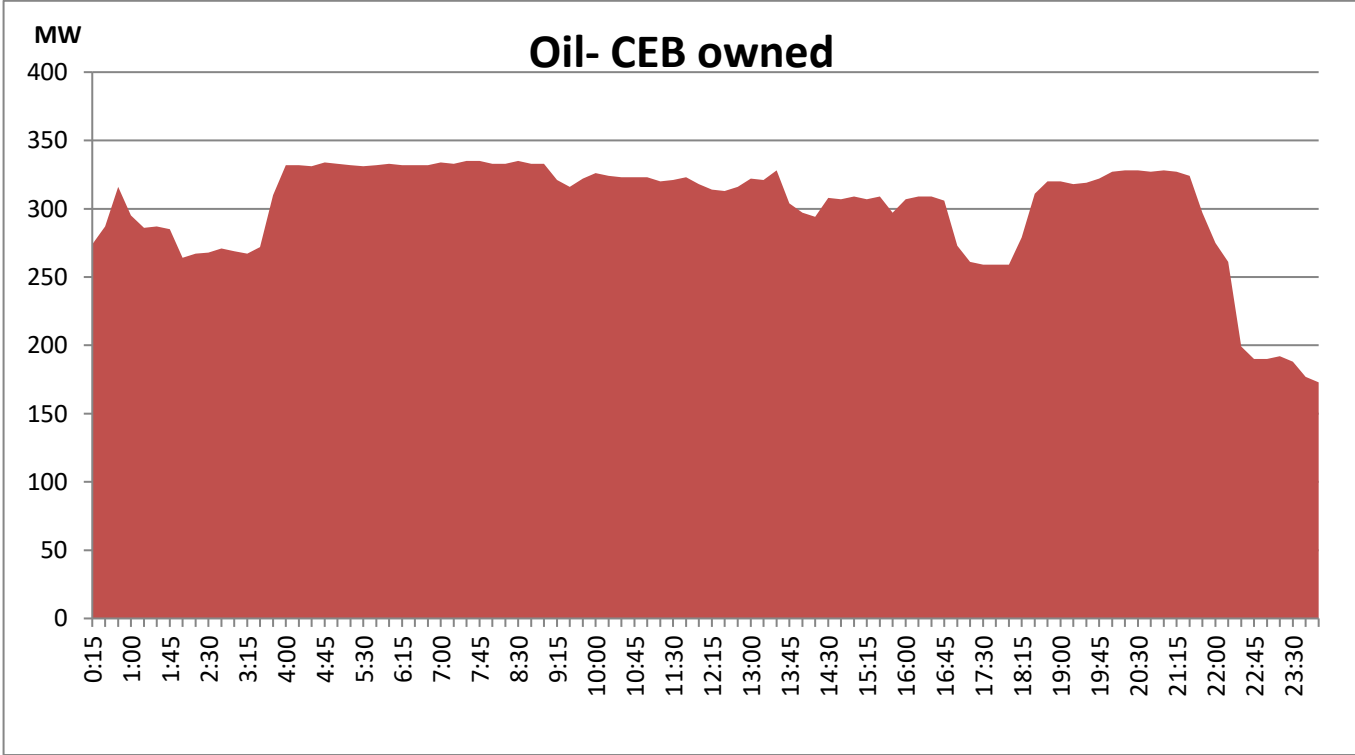
**Coal Generation during the Previous day**

**July 9, 2021**



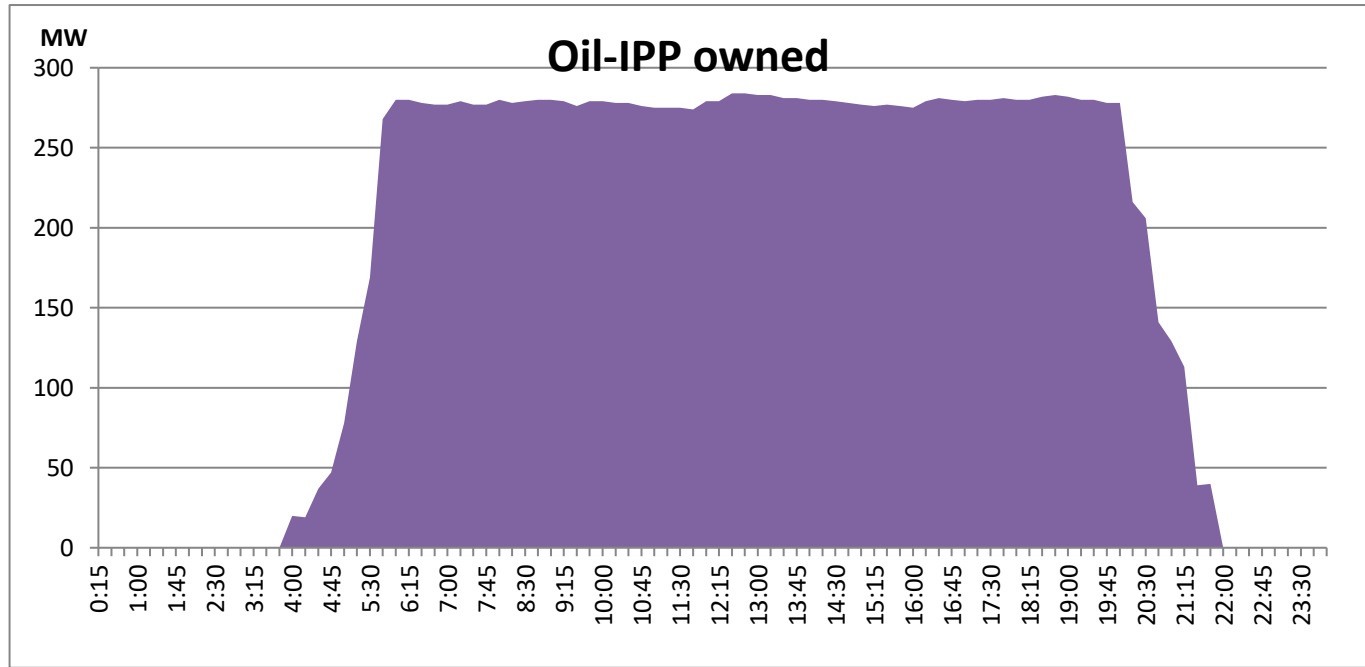
**CEB Oil Plant Generation during the Previous day**

**July 9, 2021**



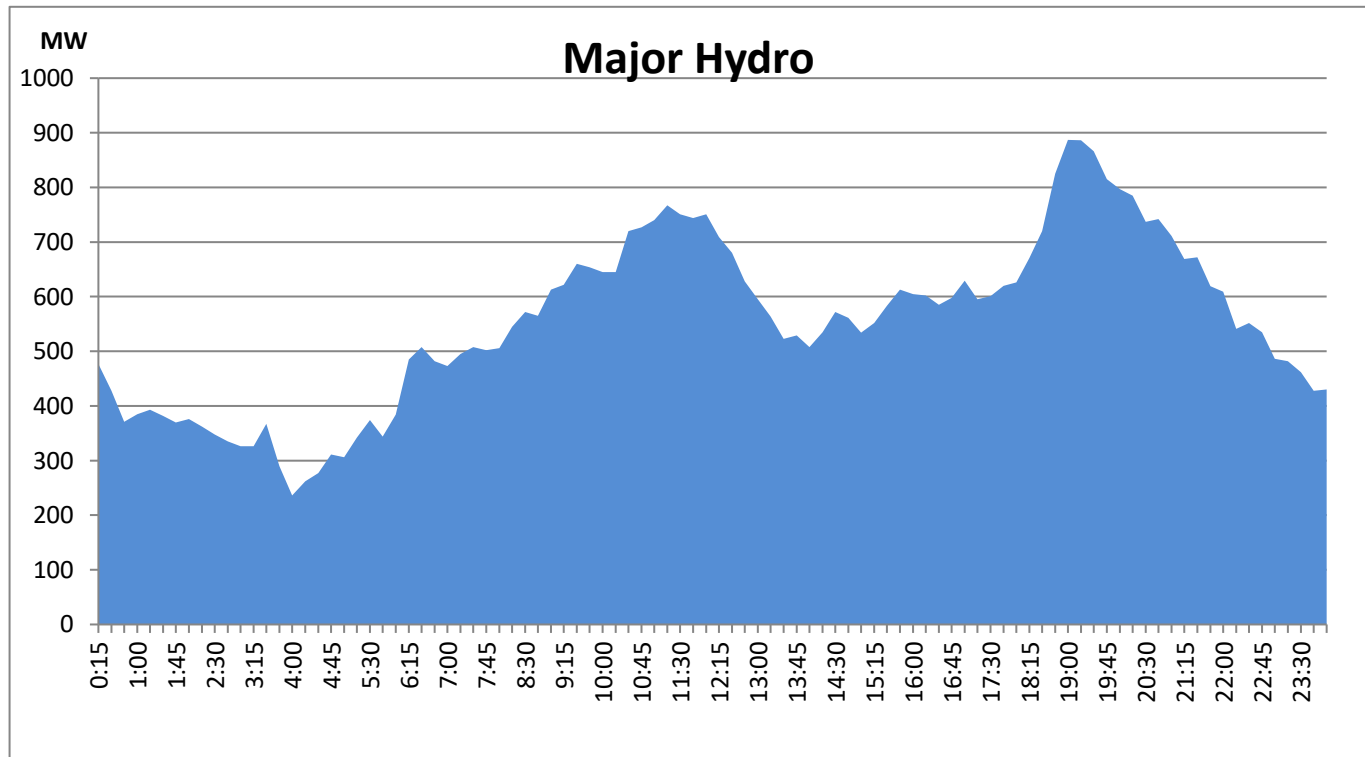
### IPP Oil Plant Generation during the Previous day

July 9, 2021



### Major Hydro Generation during the Previous day

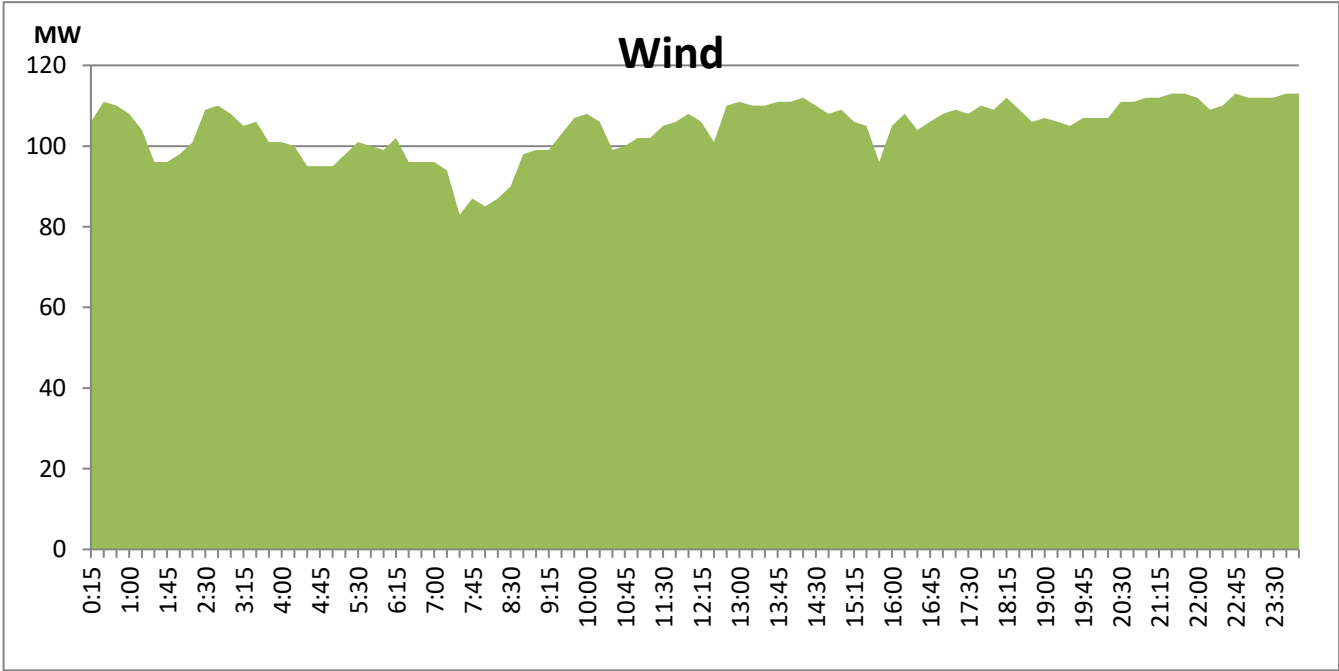
July 9, 2021



# Wind Generation during the Previous day

July 9, 2021

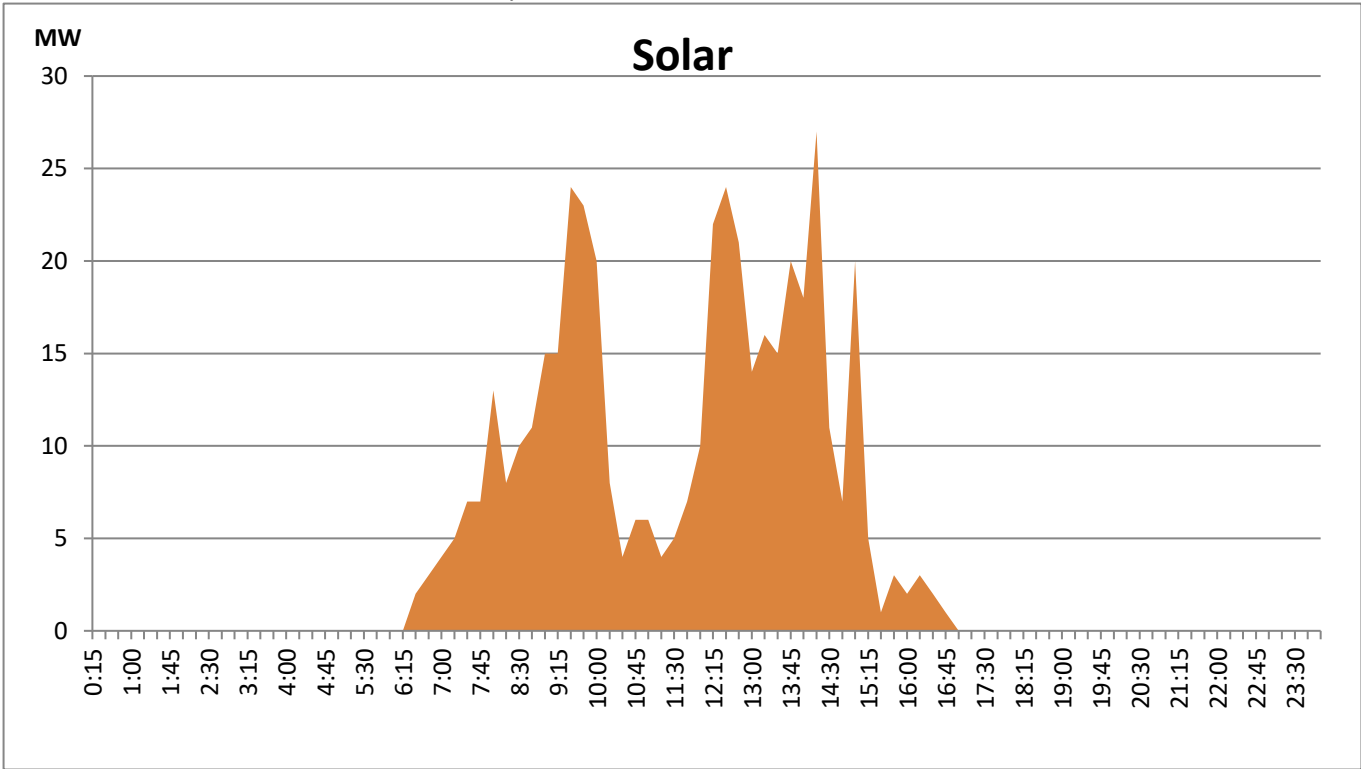
Based on Telemetered Power Stations only



# Solar Generation during the Previous day

July 9, 2021

Based on Telemetered Power Stations only



## Thermal Plant Fuel types

Power Station	Primary Fuel
CEB Thermal	
Sapugaskanda 1	Heavy Fuel
Sapugaskanda 2	Heavy Fuel
Kelanitissa Small Gas Turbines	Auto Diesel
GT 7 - Kelanitissa	Auto Diesel
Kelanitissa CCY	Naptha & Diesel
Lakvijaya 1	Coal
Lakvijaya 2	Coal
Lakvijaya 3	Coal
Uthuru Janani	Heavy Fuel
Barge CEB	Furnace Oil

Power Station	Primary Fuel
Private Thermal	
Asia Power	Heavy Fuel
Sojitz -	Auto Diesel
West Coast	Low Sulphur Furnace oil
ACE Embilipitiya	Furnace Oil

### Major Incidents during the day -as reported by CEB morning of

July 11, 2021

- 1) Kukule/ Laxapana spilling continues to the present hour.
- 2) Upper kothmale spilling started at 02:51hrs and spilling stopped at 05:45 hrs on 11.07.2021.
- 3) Canyon spilling started at 00:33 hrs and stopped at 05:35 hrs. Canyon Spilling started again at 15:38 hrs and continues to the present
- 4) Norton spilling stopped at 11:00 hrs and spilling started again at 16:39 hrs and continues to the present hour.
- 5) 33kV sides of Padukka 220/132/33kV T/F 01 & 02 normalized at 12:30 hrs which were tripped at 22:45hrs on 09.07.2021.
- 6) Kegalle 132/33kV T/F 01 & 02 tripped again at 09:23 hrs. All affected feeders normalized at 10:15 hrs via T/F-01. Kegalle T/F-02 normalized at 18:50 hrs and Kegalle 33kV B/S C/B is yet to be normalized.
- 7) Polpitiya unit 01 tripped at 03:55hrs with TGB high alarm and resumed generation at 07:50 hrs.
- 8) Polpitiya Gen-02 tripped at 11:12 hrs due to TGB high temperature alarm and resumed generation at 14:19 hrs. Polpitiya gen-02 tripped again at 16:18 hrs with same indication and resumed generation at 17:29 hrs.
- 9) Maussakelle reservoir started spilling at 05:01 hrs on 11.07.2021.