

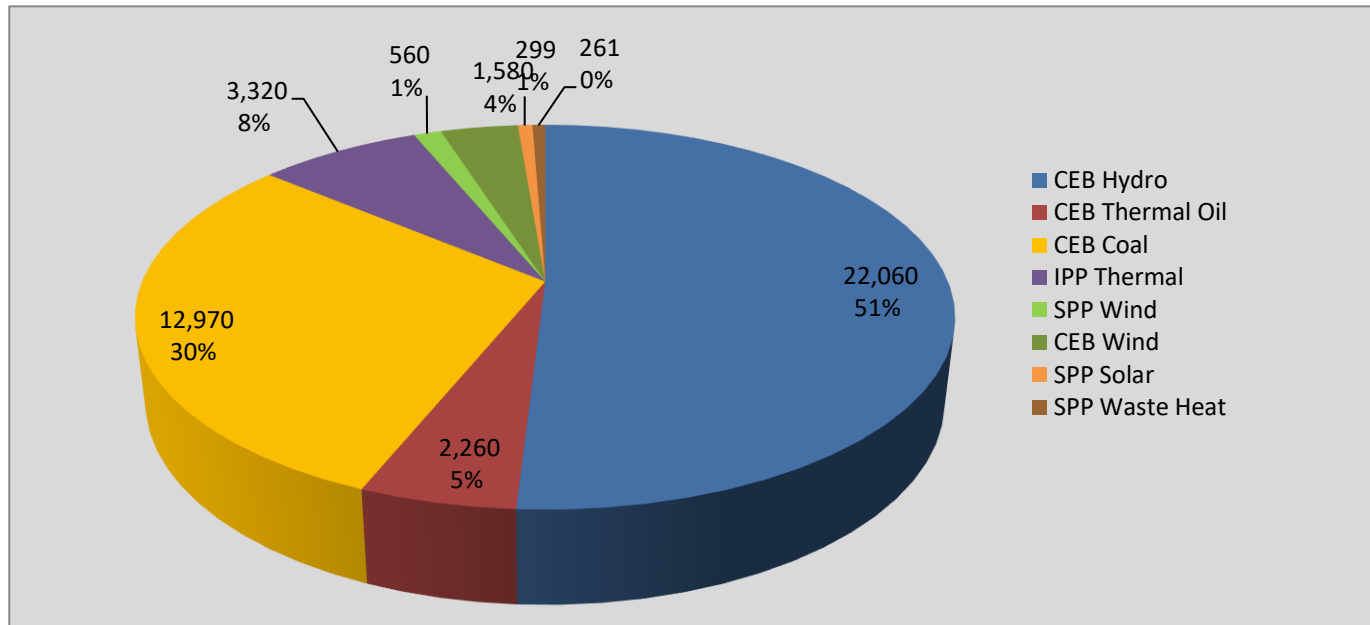
Generation and Reservoirs Statistics

June 22, 2021



PUBLIC UTILITIES COMMISSION OF SRI LANKA

Daily Generation Mix in MWh



Total Generation 43,320 MWh

Note: Minihydro and Biomass and waste heat (except 10 MW WH plant at Kerawalapitiya) power plant energy is not included

Cumulative Dispatch

Note: Minihydro and Biomass and waste heat (except 10 MW WH plant at Kerawalapitiya) power plant energy is not included

For Current Month

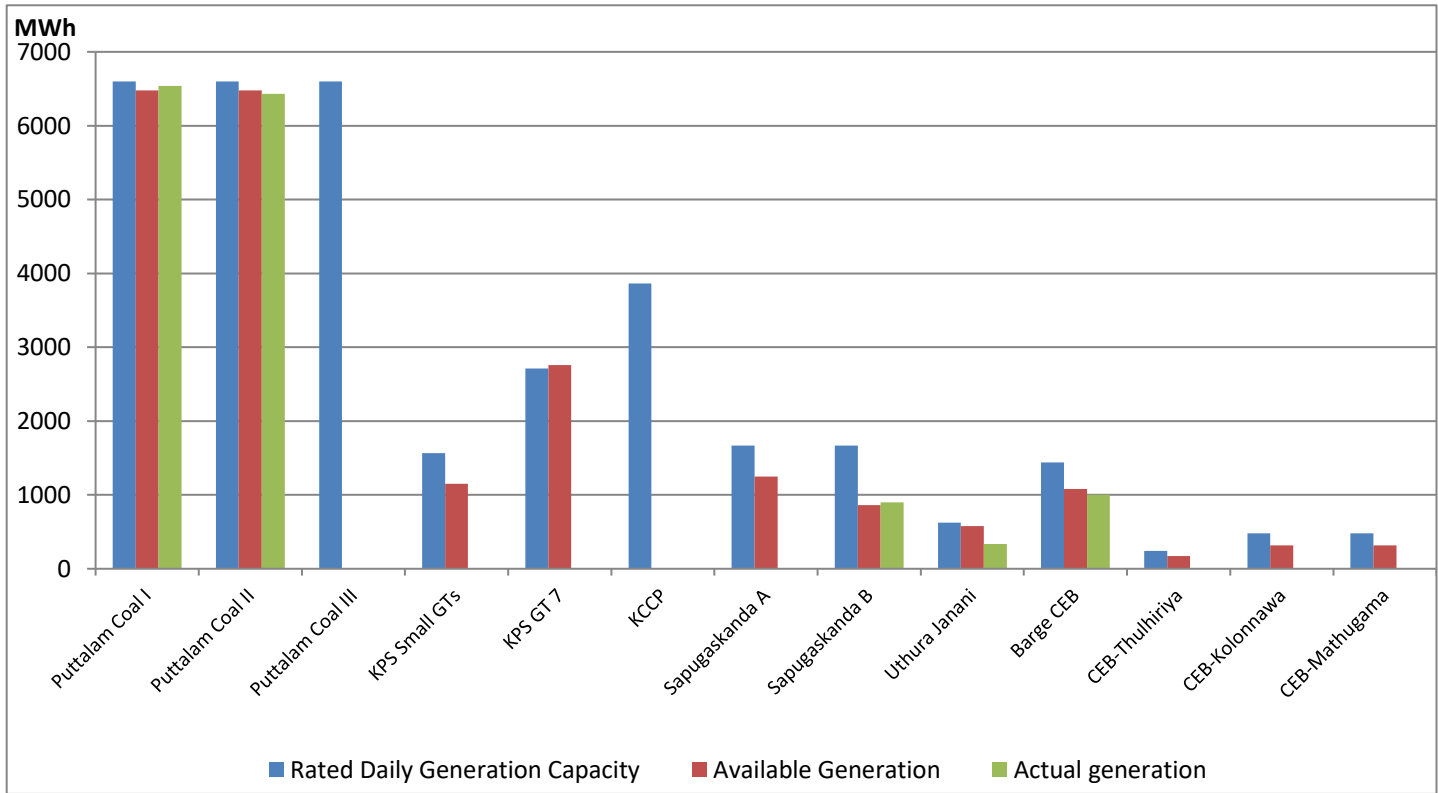
Category	Dispatch (GWh)	Percentage
CEB Hydro	510.1	63.16%
CEB Thermal Oil	7.8	0.97%
CEB Coal	211.5	26.19%
IPP Thermal	9.8	1.21%
SPP Wind	18.5	2.29%
CEB Wind	38.7	4.79%
SPP Solar	6.7	0.83%
SPP Waste Heat	4.5	0.56%
Total	807.6	

For Current Year

Category	Dispatch (GWh)	Percentage
CEB Hydro	2,005.1	28.92%
CEB Thermal Oil	698.0	10.07%
CEB Coal	2,981.9	43.01%
IPP Thermal	1,041.8	15.03%
SPP Wind	69.4	1.00%
CEB Wind	85.4	1.23%
SPP Solar	45.4	0.66%
SPP Waste Heat	6.4	0.09%
Total	6,933.1	

CEB owned Thermal Plant Dispatch

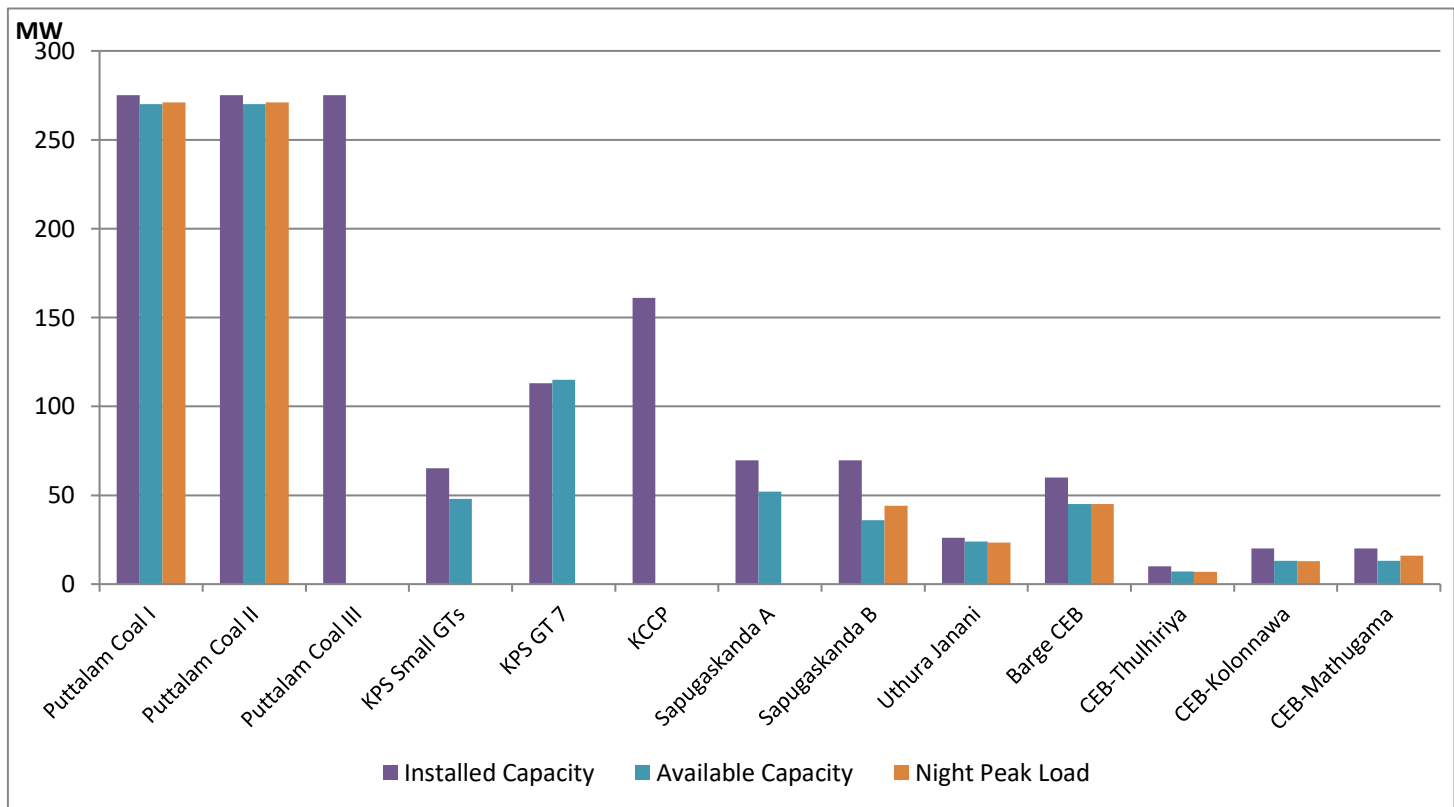
June 22, 2021



Available Generation is estimated based on plant availability at 6.00am on

June 23, 2021

CEB owned Thermal Plant Loading at the Night Peak



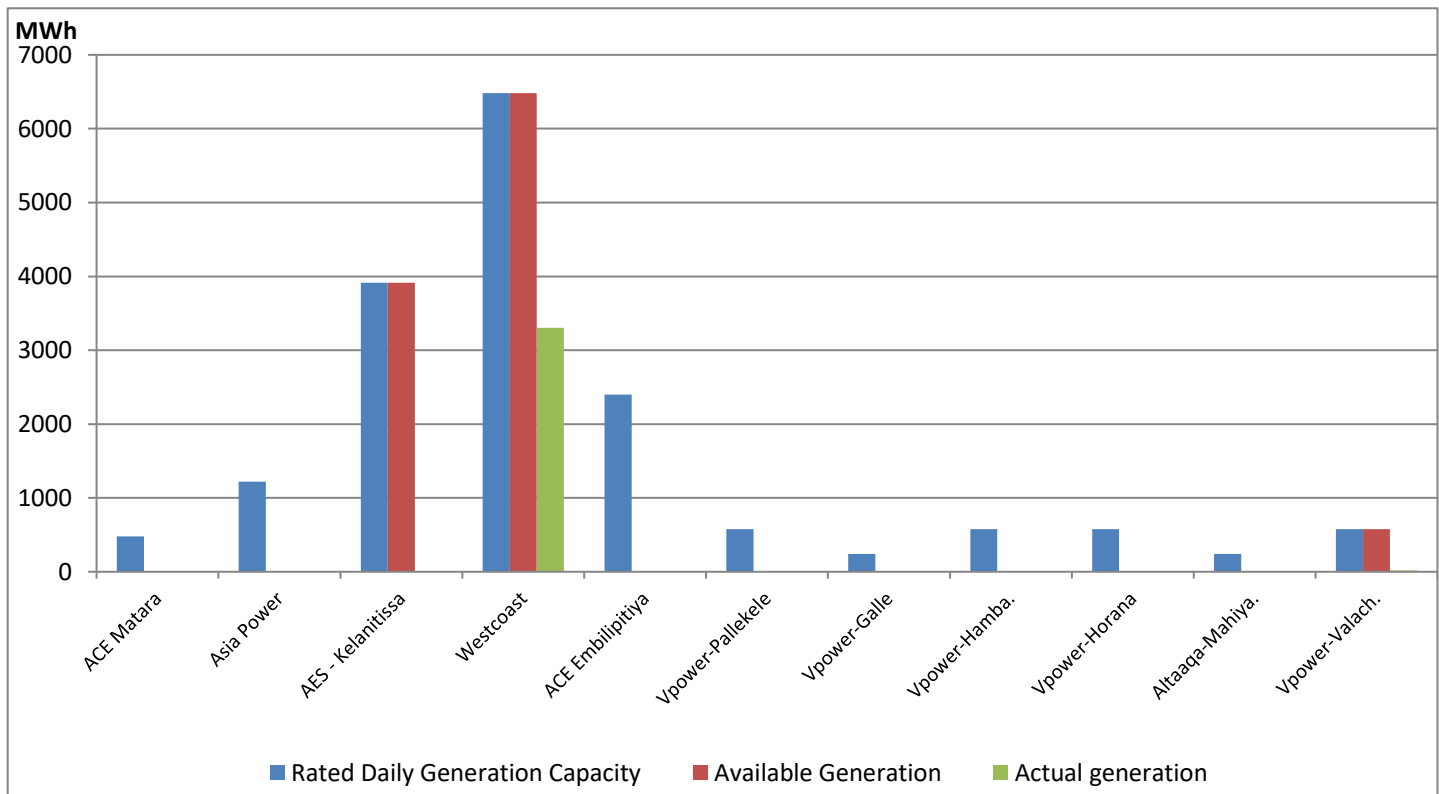
Note- Plant availability is recorded at 6.00 am on

June 23, 2021

IPP owned Thermal Plant Dispatch

June 22, 2021

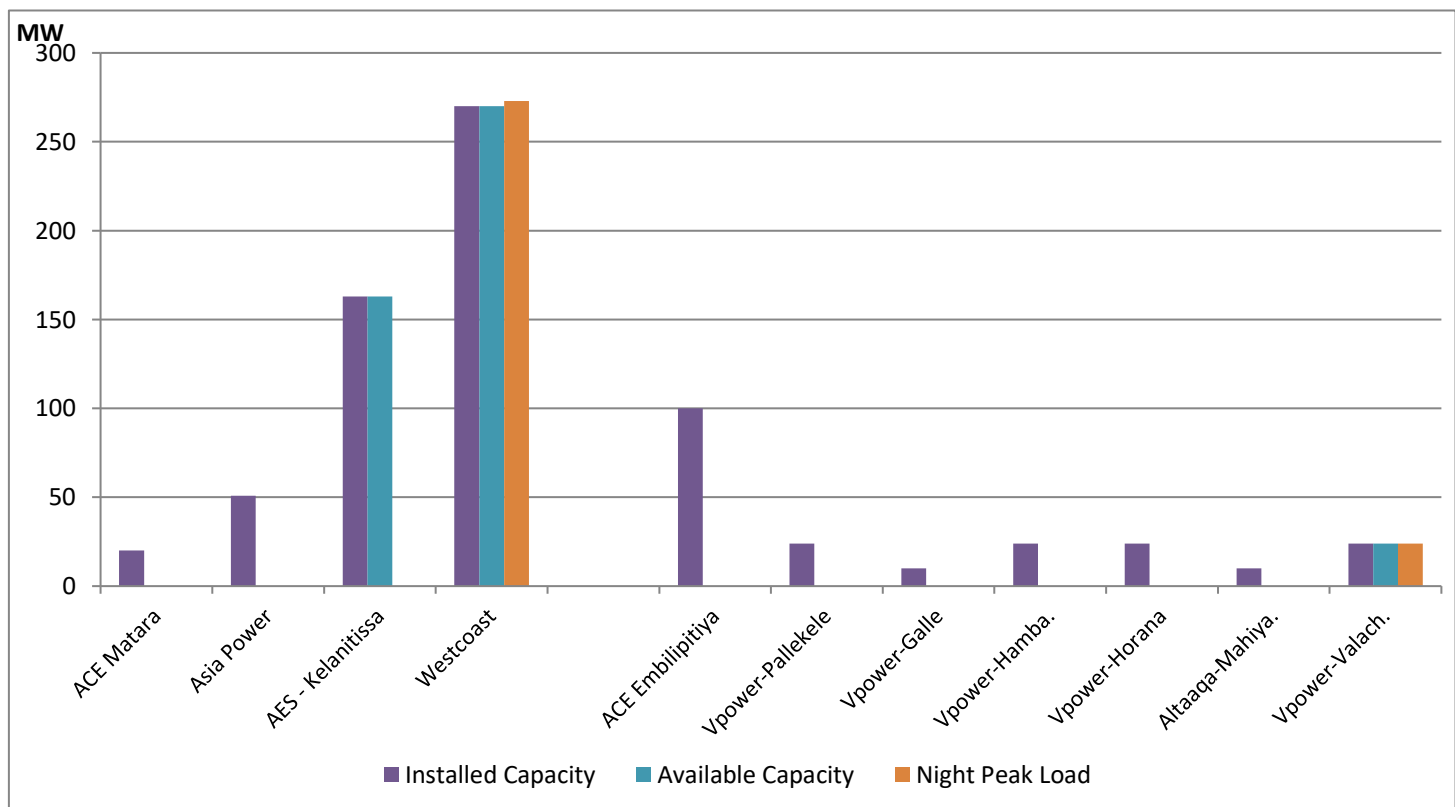
ACE Embilipitiya, ACE Matara, Asia Power, V Power Pallekale, Vpower Galle, V Power Horana, Vpower Hambantota and Altaqa Mahiyangaya are not available due to expiration of PPAs



Available Generation is estimated based on plant availability at 6.00am on

June 23, 2021

IPP owned Thermal Plant Loading at the Night Peak

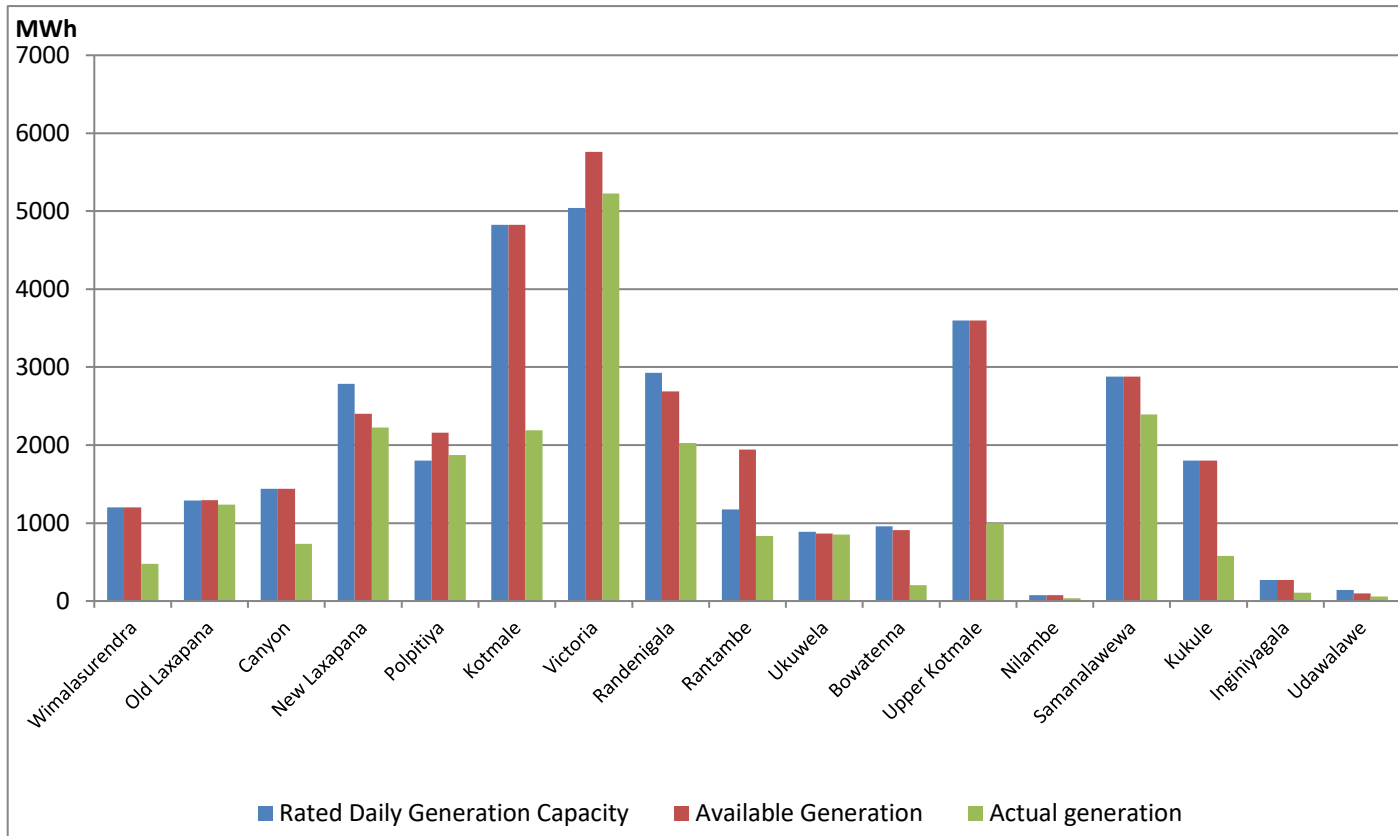


Note- Plant availability is recorded at 6.00 am on

June 23, 2021

Major Hydro Plant Dispatch

June 22, 2021

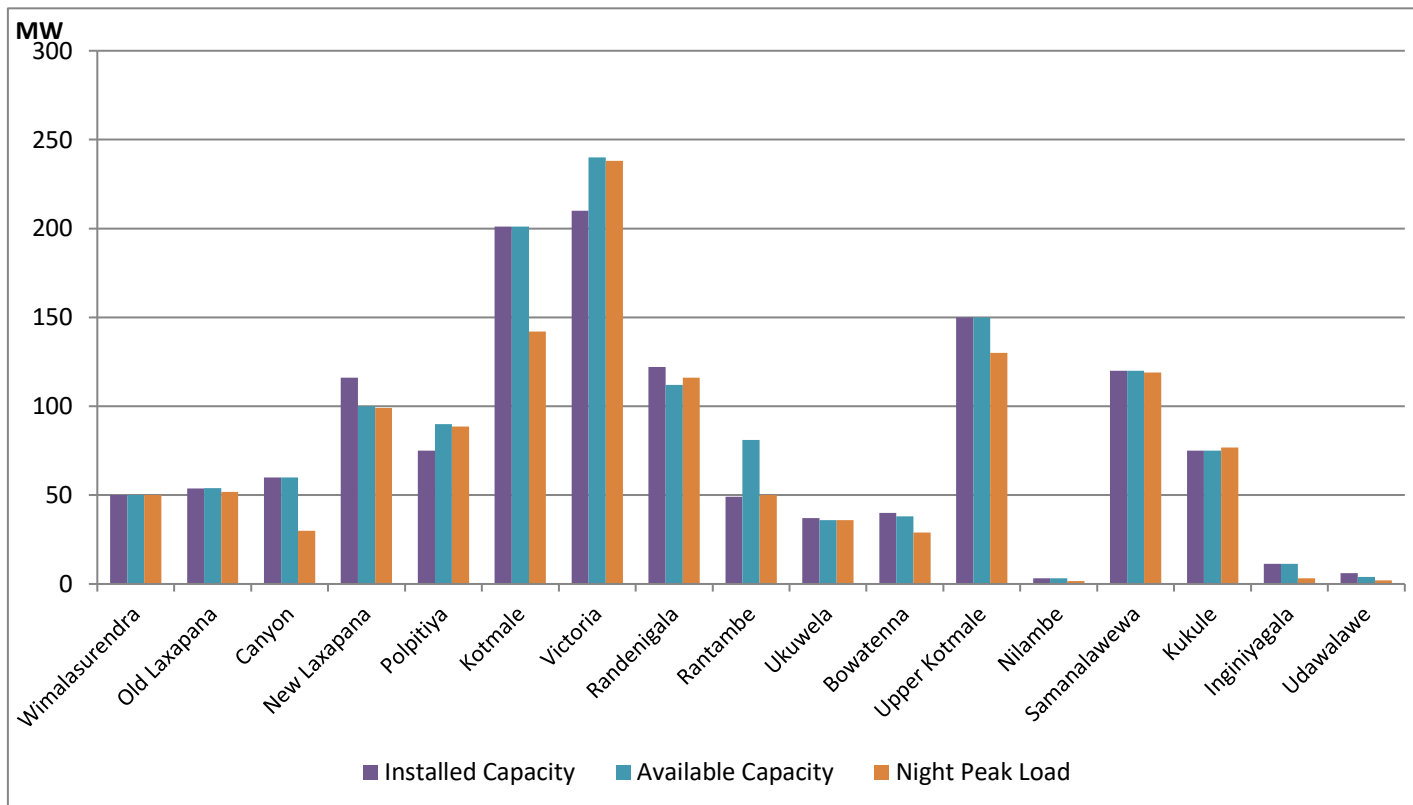


Note- Available Generation is estimated based on plant availability at 6.00am on

June 23, 2021

Major Hydro Plant Loading at Night Peak

June 22, 2021



Note- Plant availability is recorded at 6.00 am on

June 23, 2021

Summary of Major Plant performance

Plant	Installed Capacity (MW)	Plant Availability (MW)	Night peak Load (MW)	Plant Dispatch (GWh)
Wimalasurendra	50.00	50.00	50.00	479.00
Old Laxapana	53.80	54.00	51.70	1,237.00
Canyon	60.00	60.00	30.00	735.00
New Laxapana	116.00	100.00	99.00	2,224.00
Polpitiya	75.00	90.00	88.60	1,873.00
Kotmale	201.00	201.00	142.00	2,190.00
Victoria	210.00	240.00	238.00	5,226.00
Randenigala	122.00	112.00	116.00	2,028.00
Rantambe	49.00	81.00	50.00	834.00
Ukuwela	37.00	36.00	36.00	854.00
Bowatenna	40.00	38.00	29.00	205.00
Upper Kotmale	150.00	150.00	130.00	997.00
Nilambe	3.20	3.20	1.60	38.00
Samanalawewa	120.00	120.00	119.00	2,392.00
Kukule	75.00	75.00	76.80	579.00
Inginiyagala	11.25	11.25	3.10	106.00
Udawalawe	6.00	4.00	2.00	59.00
Puttalam Coal I	275.00	270.00	271.00	6,538.00
Puttalam Coal II	275.00	270.00	271.00	6,433.00
Puttalam Coal III	275.00	-	-	-
KPS Small GTs	65.20	48.00	-	5.00
KPS GT 7	113.00	115.00	-	-
KCCP	161.00	-	-	-
Sapugaskanda A	69.60	52.00	-	-
Sapugaskanda B	69.60	36.00	44.00	897.00
Uthura Janani	26.01	24.00	23.40	337.00
Barge CEB	60.00	45.00	45.00	1,004.00
CEB-Thulhiriya	10.00	7.20	7.00	4.00
CEB-Kolonnawa	20.00	13.20	13.00	7.00
CEB-Mathugama	20.00	13.10	16.00	8.00
ACE Matara	20.00	-	-	-
Asia Power	50.80	-	-	-
AES - Kelanitissa	163.00	163.00	-	-
Westcoast	270.00	270.00	273.00	3,305.00
ACE Embilipitiya	100.00	-	-	-
Vpower-Pallekele	24.00	-	-	-
Vpower-Galle	10.00	-	-	-
Vpower-Hamba.	24.00	-	-	-
Vpower-Horana	24.00	-	-	-
Altaaqa-Mahiya.	10.00	-	-	-
Vpower-Valach.	24.00	24.00	24.00	20.00
Solar	58.00		-	297.00
Wind	128.00		90.80	2,148.00
MH and BM	394.00		110.80	Not available
Total without NCRE	3,538.46	2,775.95		

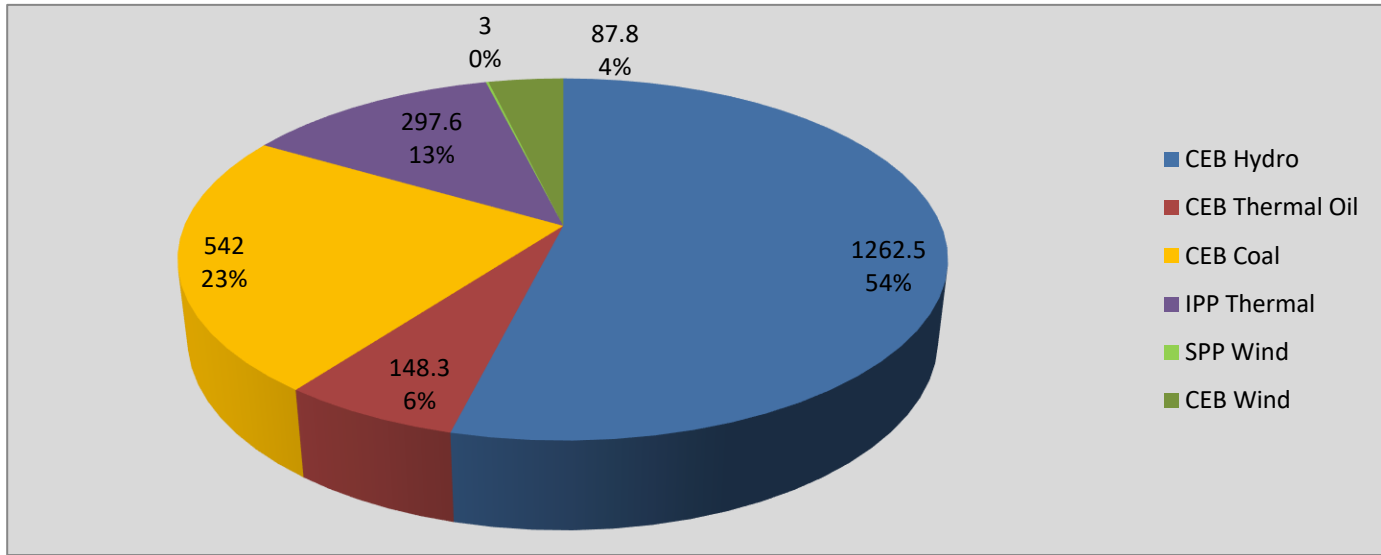
Night peak load of MH and BM only include loading of Minihydro plants of total capacity MW 192

Installed capacity of Solar, wind, Mini-hydro and Biomass plants are as of end of December 2019

Plant availability is the availability recorded at 6 am on June 23, 2021

Contribution to the Night Peak in MW

June 22, 2021



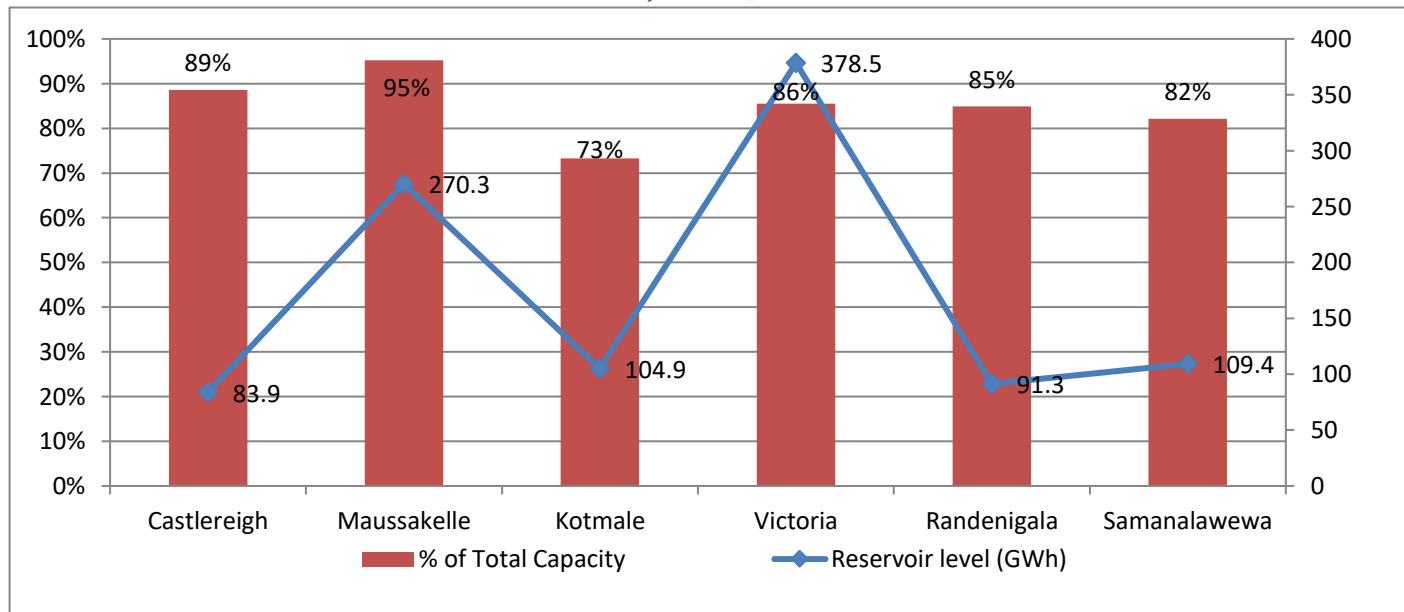
Night Peak*	2,341.2 MW
Day Peak	2,061.4 MW
Minimum Demand	1,329.4 MW

Notes: *The above chart pattern and night peak figure is presented excluding the contribution of Moragahakanda, other minihydro and biomass power plants

**Day peak and Minimum demand includes the contribution from Moragahakanda, wind and solar plants

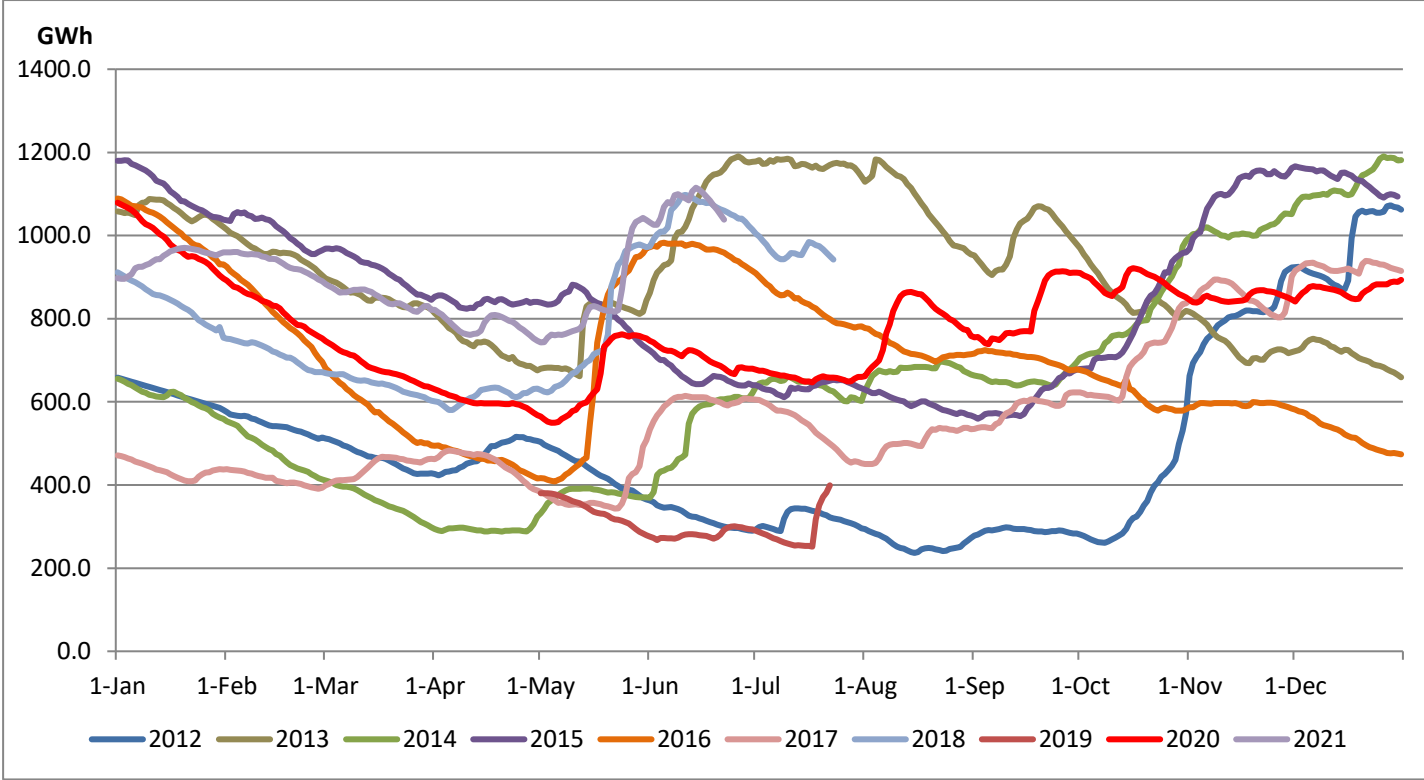
* in addition to the night peak figure presented above, Kerawalapitiya waste heat plant, other MiniHydro and Biomass Plants of installed capacity 192.00 MW has recorded total 110.80 MW at night peak

Reservoir Levels - as at 06.00 Hr on June 23, 2021



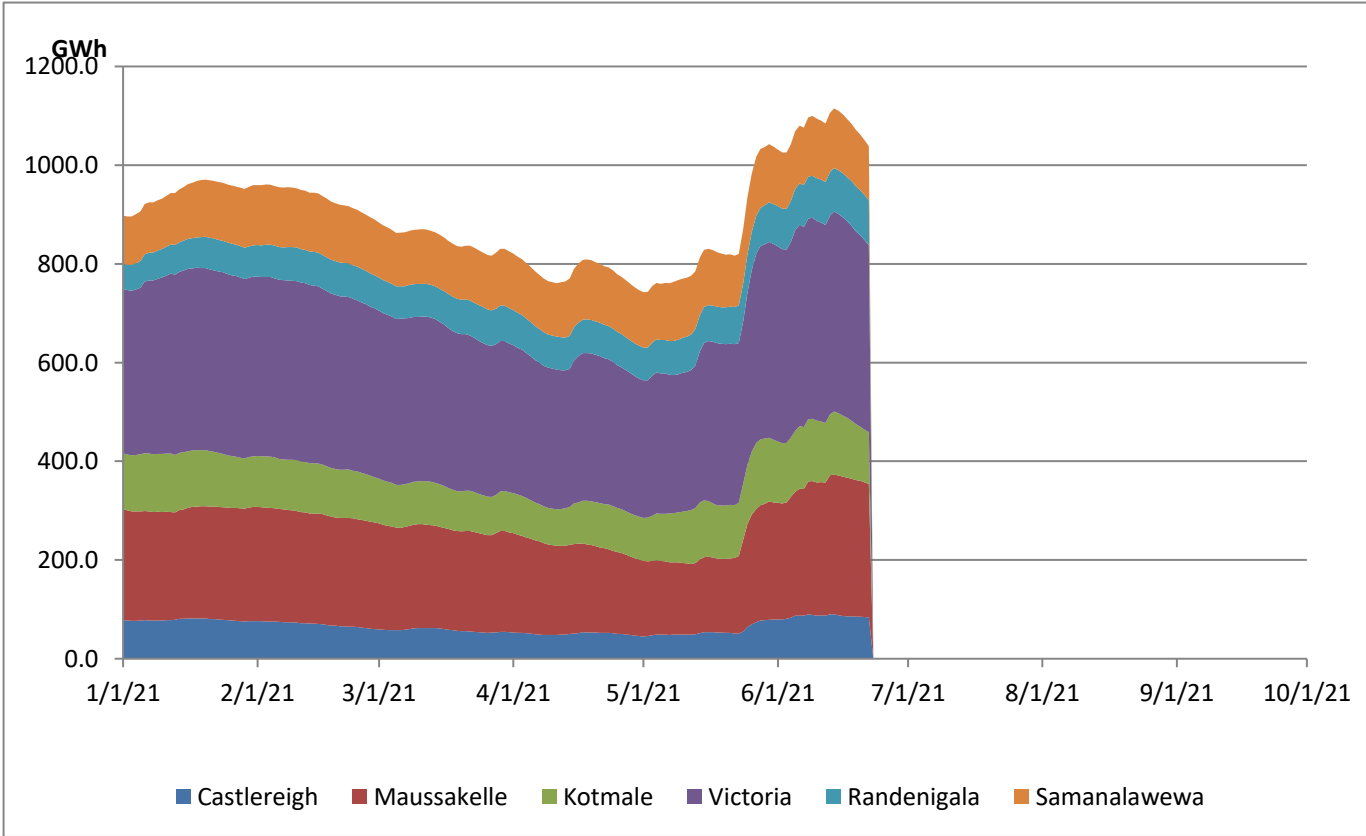
Total Reservoir Level(GWh)	1038.3
% of Total capacity	86.2%

Comparison of Total Reservoir Storage Levels with Past Years

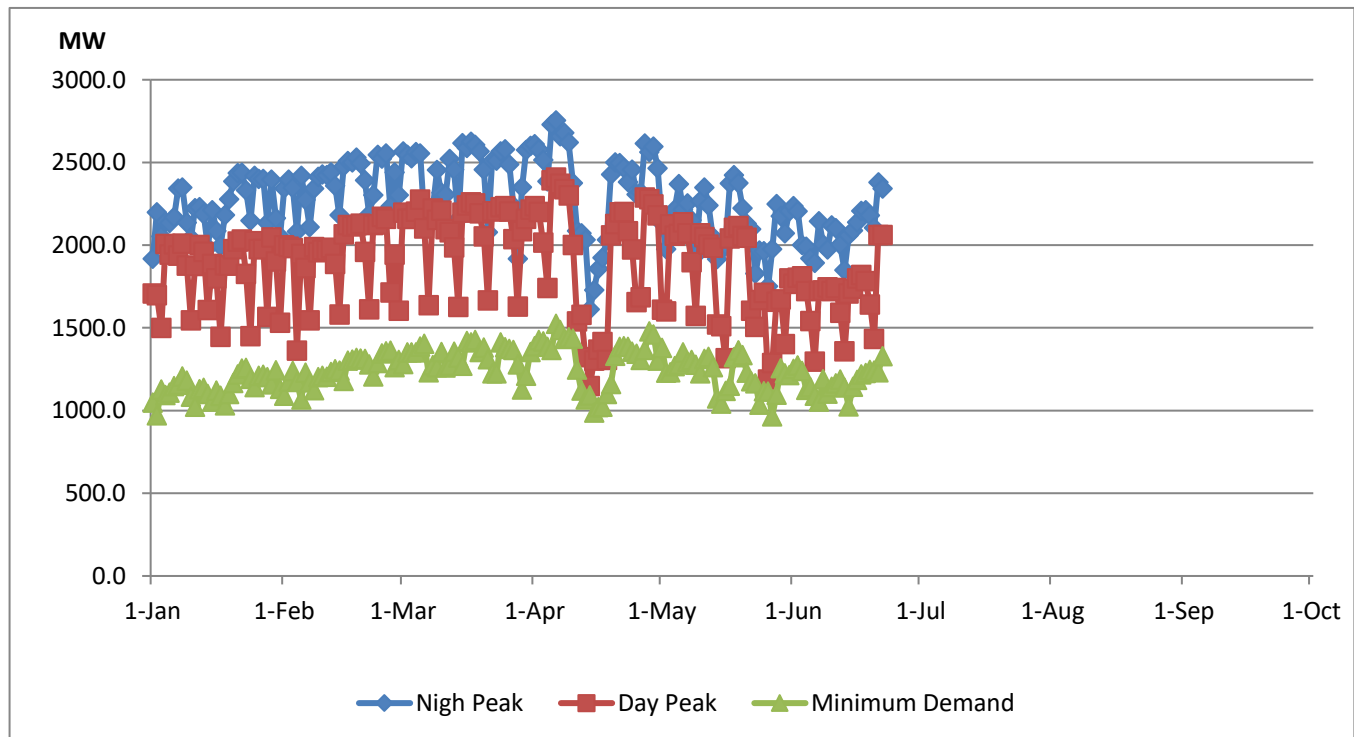


Data for 2018 and 2019 are only available for part of year.

Variation of Major Hydro Reservoir Levels in the current year (GWh)



Variation of Demand during the current year



Notes:

The night peak is excluding the contribution from Minihydro and biomass power plants

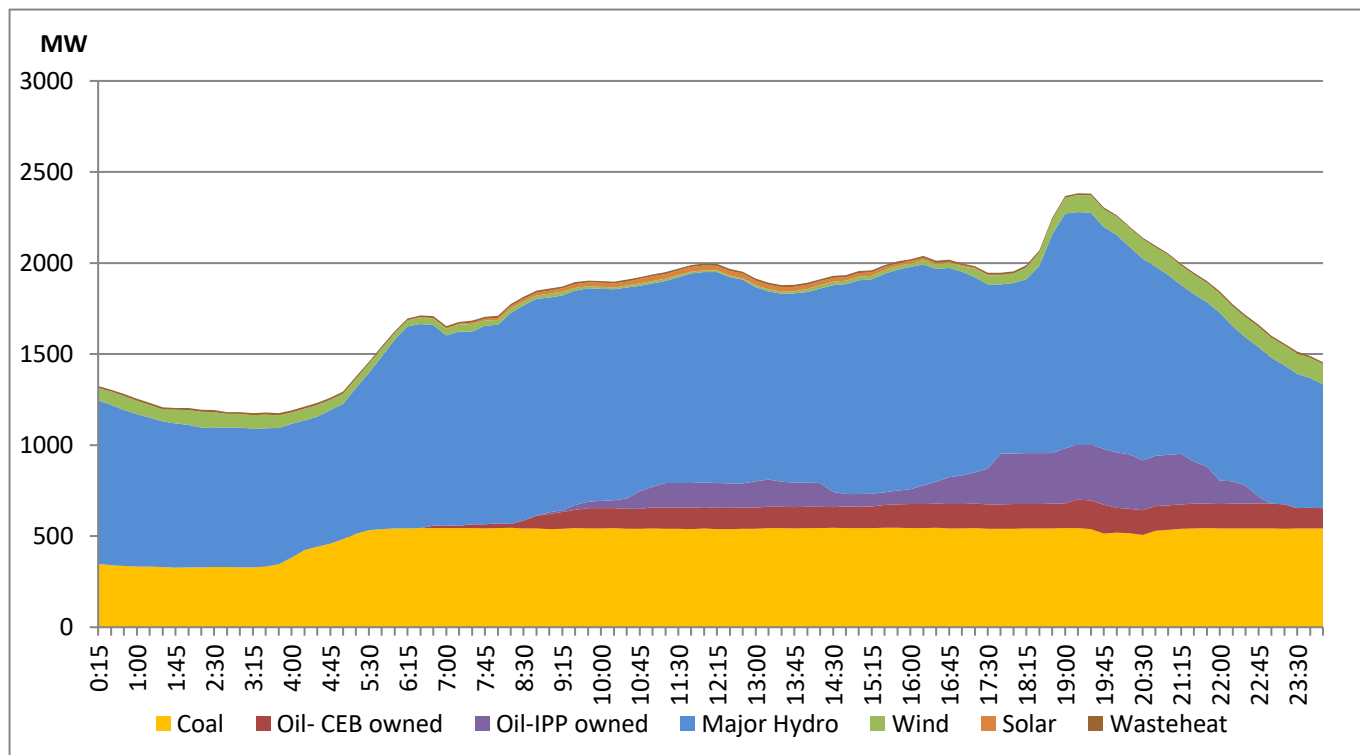
Day peak and minimum demand graphs includes the contribution from Moragahakanda power plant

All graphs include the contribution from telemetered solar and wind plants

Daily Load Curve of the Previous day

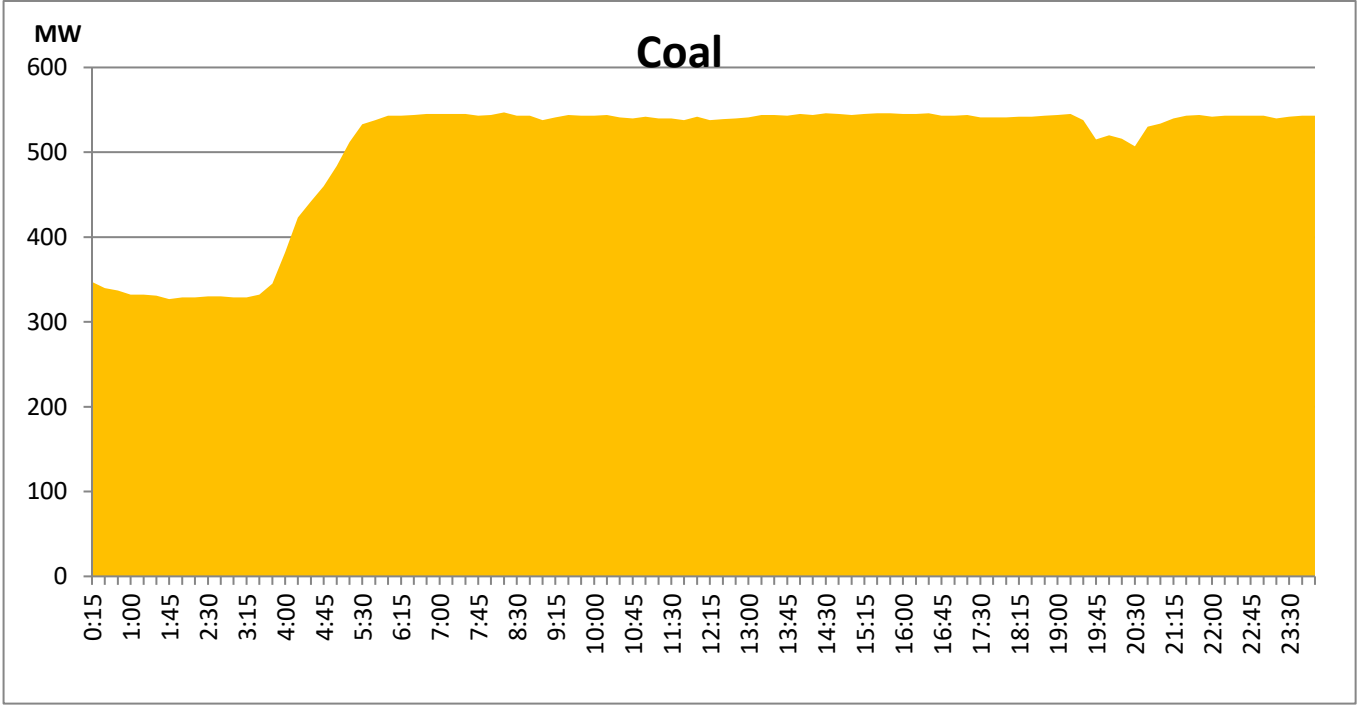
June 21, 2021

Solar and wind data is based on Telemetered Power Stations only



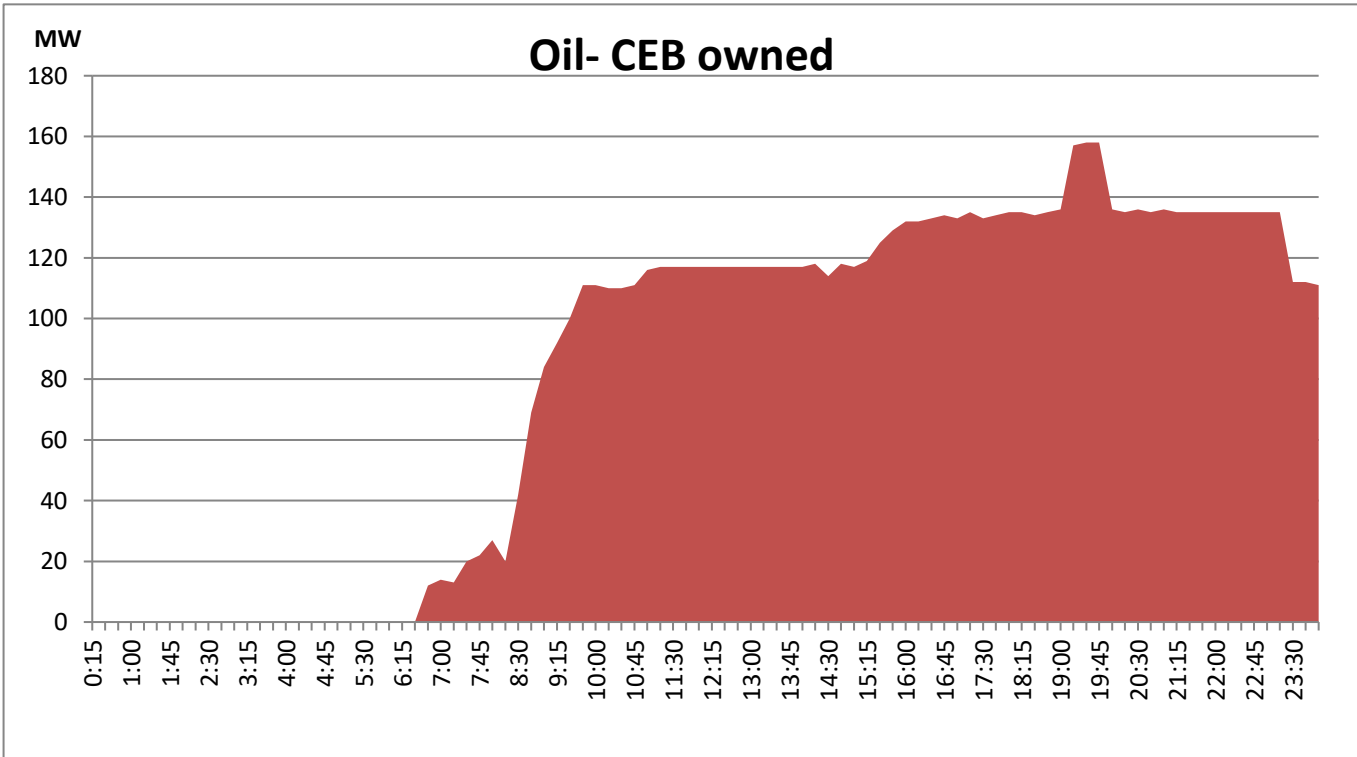
Coal Generation during the Previous day

June 21, 2021



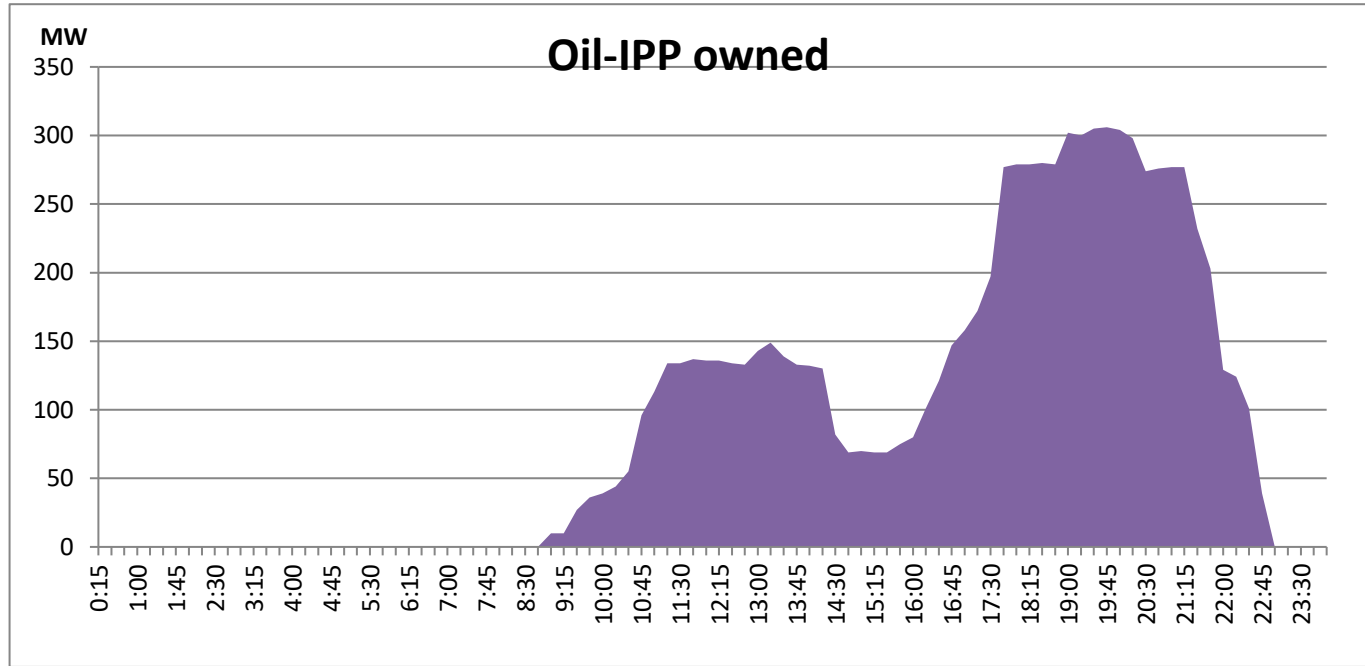
CEB Oil Plant Generation during the Previous day

June 21, 2021



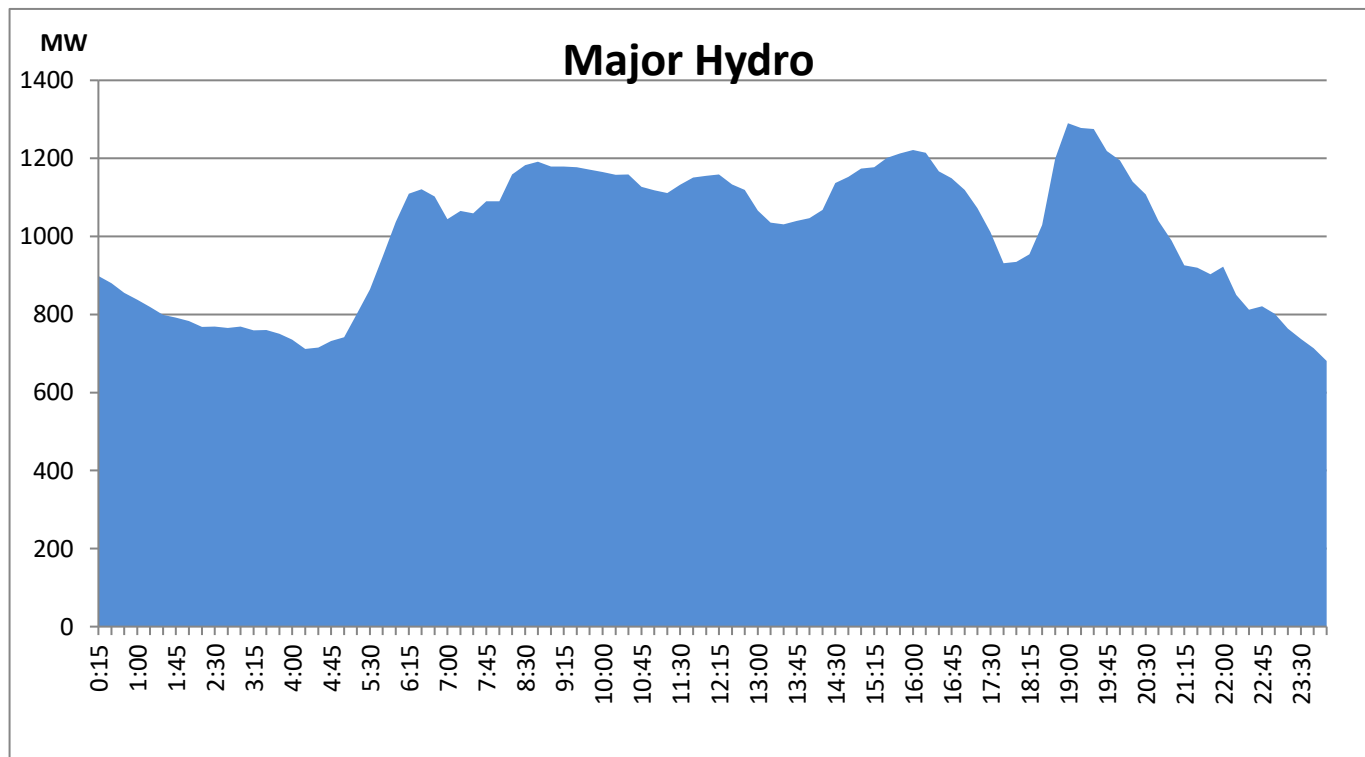
IPP Oil Plant Generation during the Previous day

June 21, 2021



Major Hydro Generation during the Previous day

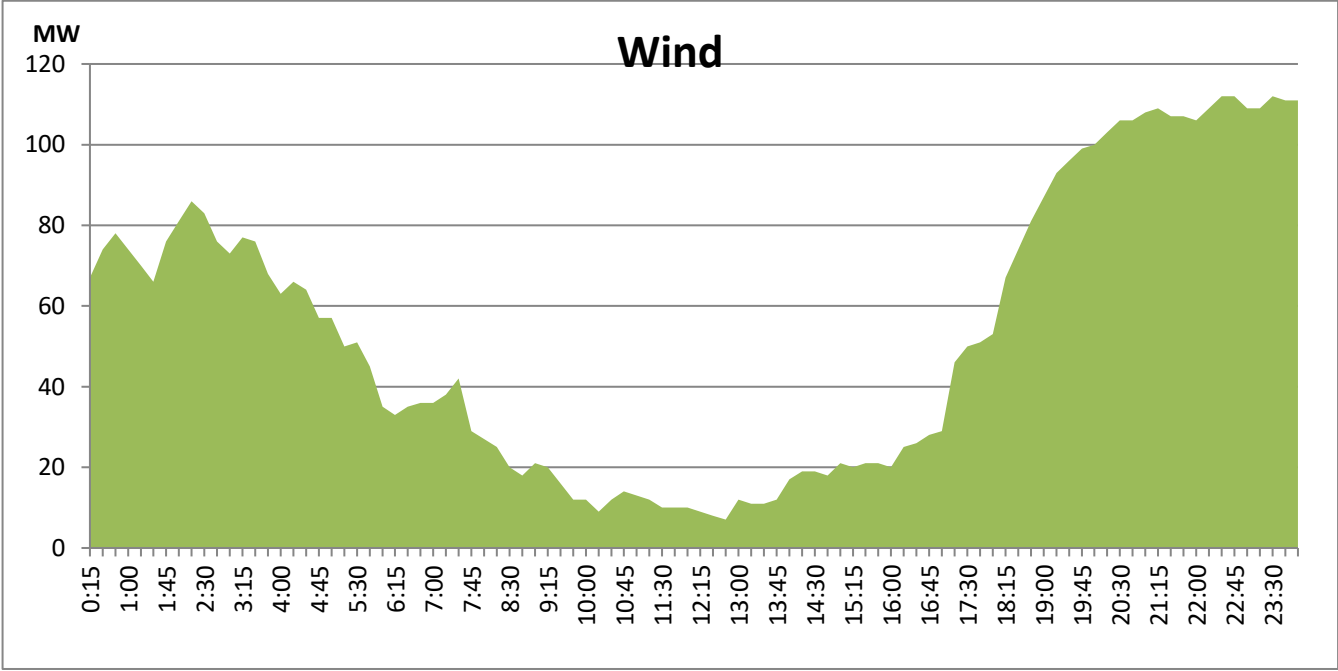
June 21, 2021



Wind Generation during the Previous day

June 21, 2021

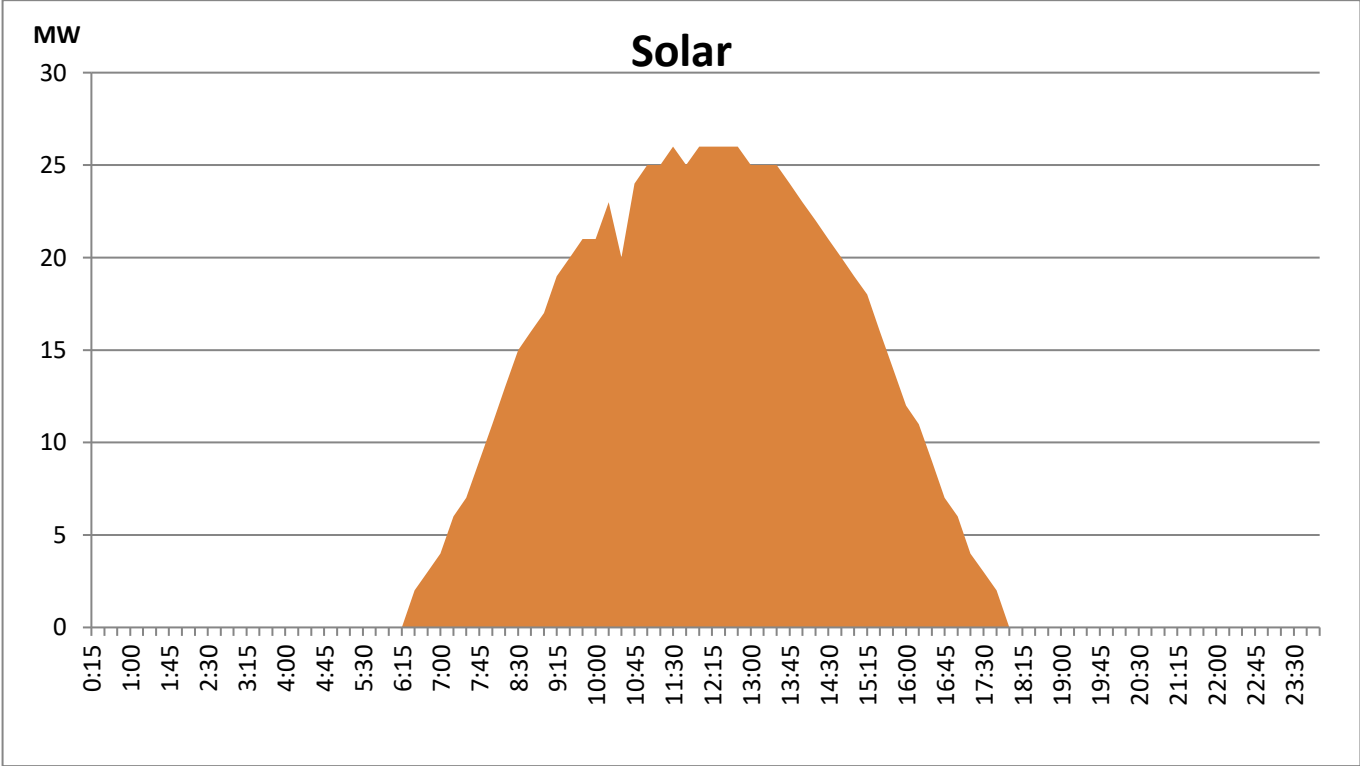
Based on Telemetered Power Stations only



Solar Generation during the Previous day

June 21, 2021

Based on Telemetered Power Stations only



Thermal Plant Fuel types

Power Station	Primary Fuel
CEB Thermal	
Sapugaskanda 1	Heavy Fuel
Sapugaskanda 2	Heavy Fuel
Kelanitissa Small Gas Turbines	Auto Diesel
GT 7 - Kelanitissa	Auto Diesel
Kelanitissa CCY	Naptha & Diesel
Lakvijaya 1	Coal
Lakvijaya 2	Coal
Lakvijaya 3	Coal
Uthuru Janani	Heavy Fuel
Barge CEB	Furnace Oil

Power Station	Primary Fuel
Private Thermal	
Asia Power	Heavy Fuel
Sojitz -	Auto Diesel
West Coast	Low Sulphur Furnace oil
ACE Embilipitiya	Furnace Oil

Major Incidents during the day -as reported by CEB morning of

June 23, 2021

1) Matara 132/33kV T/F 03 and 33kV B/S tripped at 12:43hrs due to the operation of O/C & E/F, and were restored by 12:58hrs.

2) Biyagama 132/33kV T/F 03 & T/F 04 were made available at 18:24hrs.