

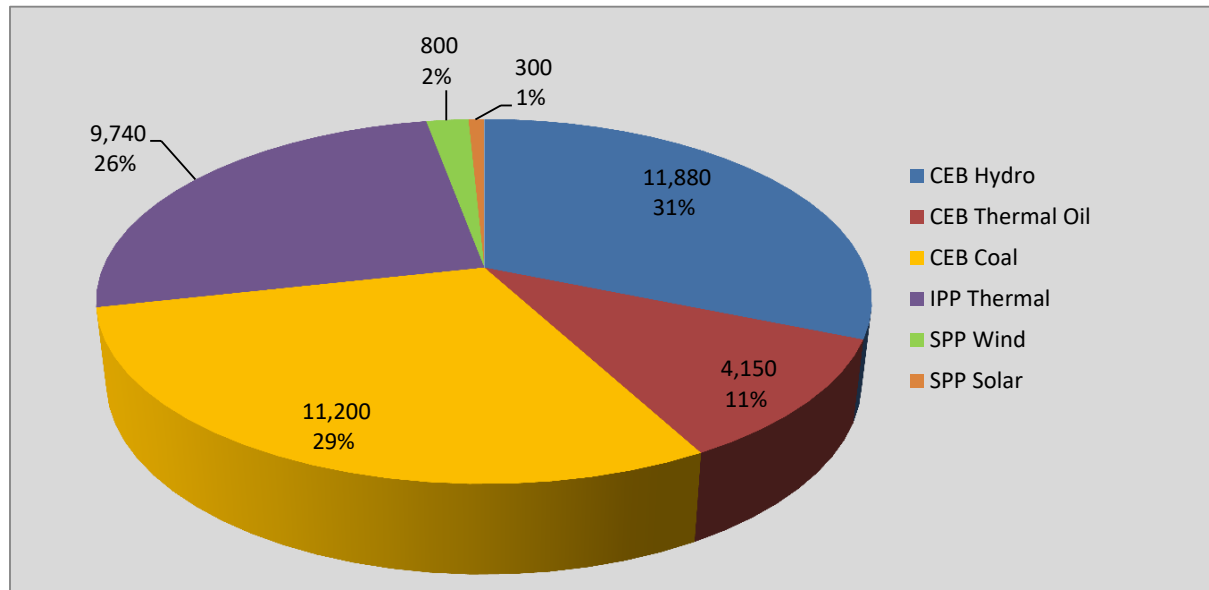
Generation and Reservoirs Statistics

August 30, 2020



PUBLIC UTILITIES COMMISSION OF SRI LANKA

Daily Generation Mix in MWh



Total Generation 38,080 MWh

Note: Generation from other SPPs (Mini Hydro and Biomass) is not included

Cumulative Dispatch

Note: Generation from other SPPs (Mini Hydro, small scale Solar and Biomass) is not included

For Current Month

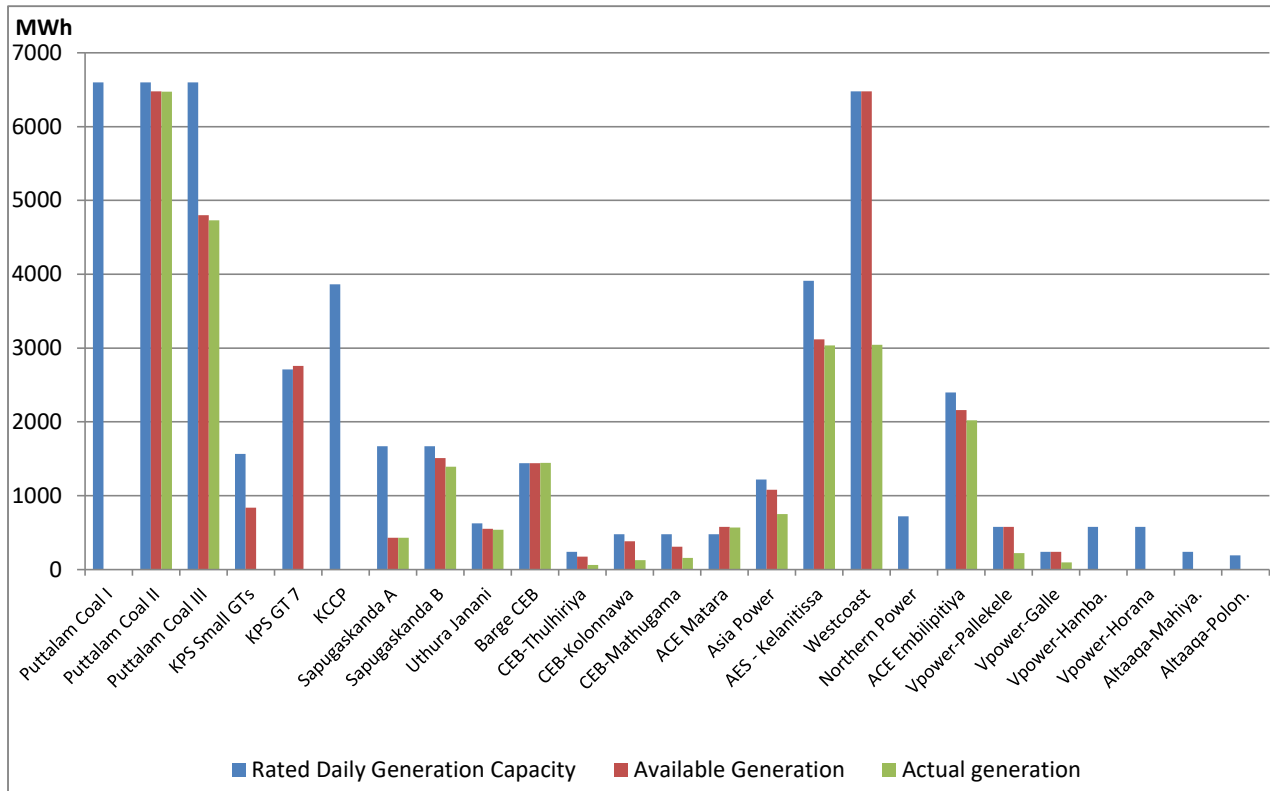
Category	Dispatch (GWh)	Percentage
CEB Hydro	454.6	38.41%
CEB Thermal Oil	103.1	8.71%
CEB Coal	391.4	33.08%
IPP Thermal	192.2	16.24%
SPP Wind	33.7	2.85%
SPP Solar	8.4	0.71%
Total	1,183.4	

For Current Year

Category	Dispatch (GWh)	Percentage
CEB Hydro	2,317.3	24.23%
CEB Thermal Oil	1,050.4	10.98%
CEB Coal	3,960.9	41.42%
IPP Thermal	1,950.9	20.40%
SPP Wind	215.6	2.25%
SPP Solar	68.2	0.71%
Total	9,563.1	

Thermal Plant Dispatch on

August 30, 2020

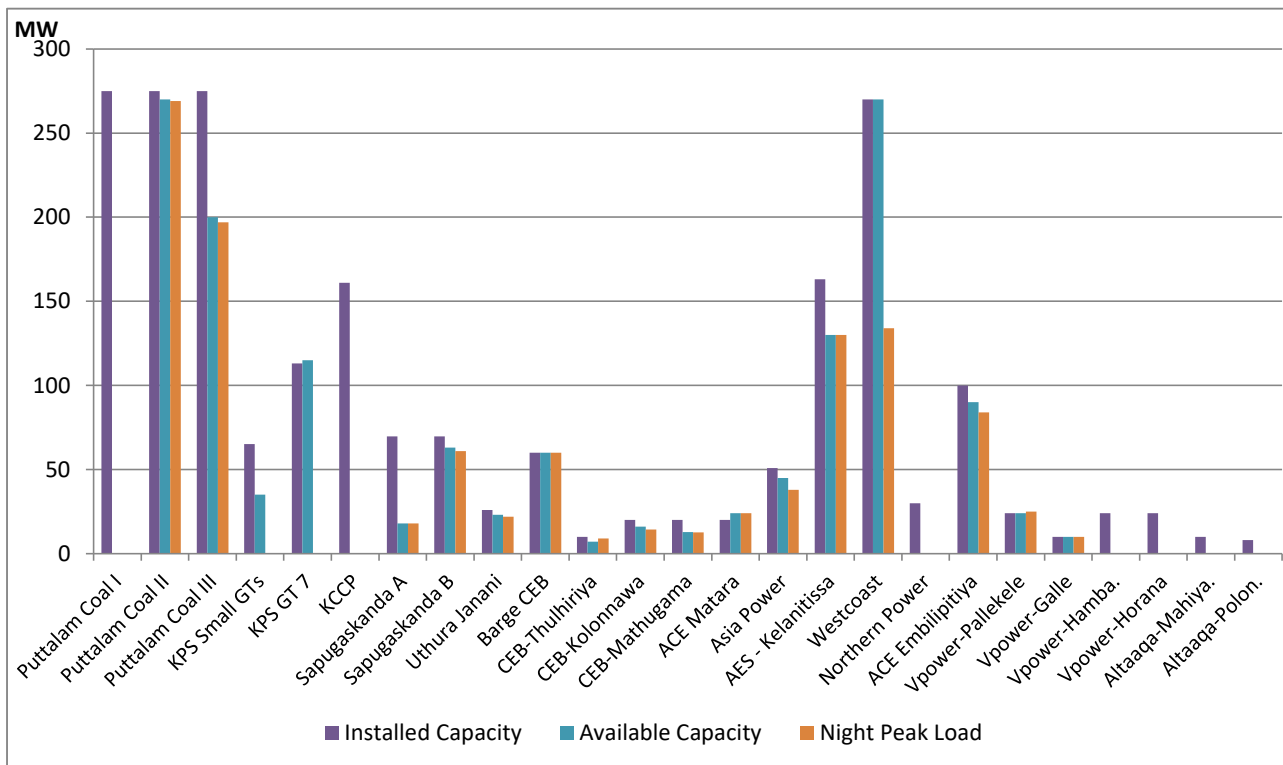


Note- Available Generation is estimated based on plant availability at 6.00am on

August 31, 2020

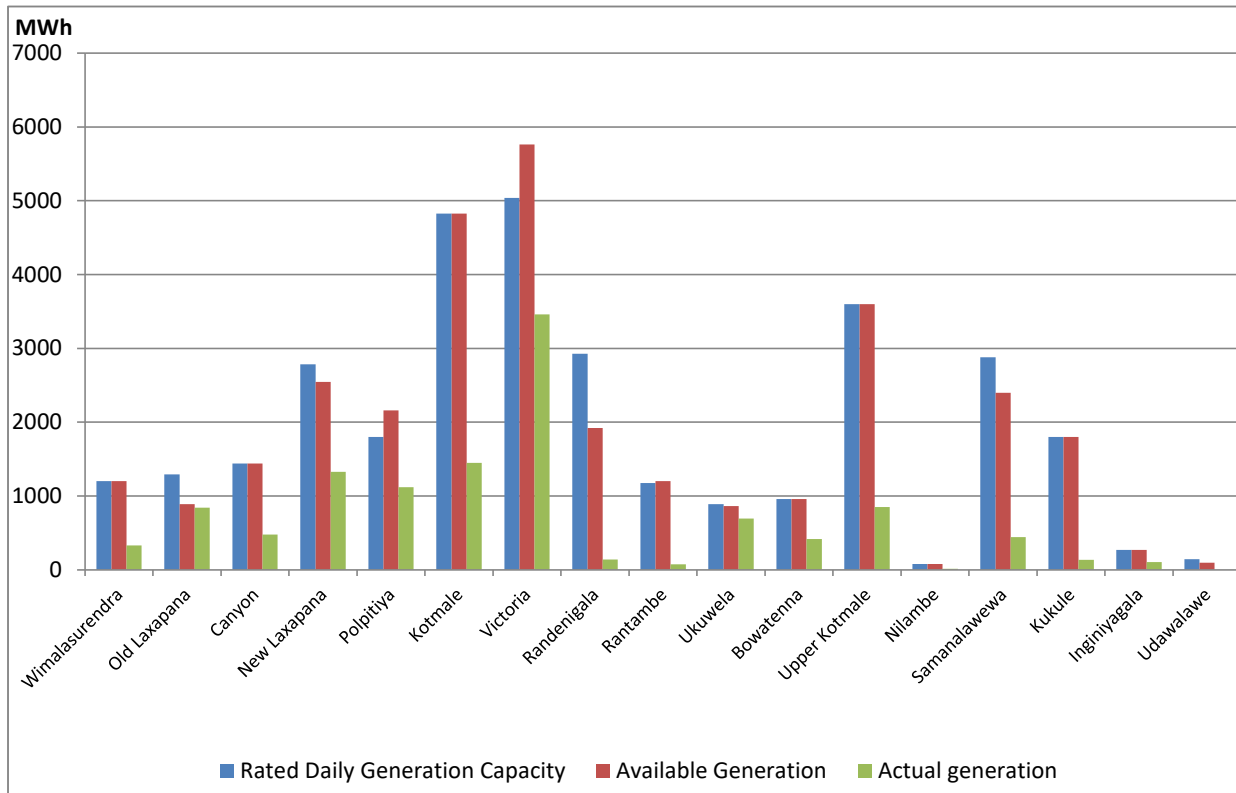
Thermal Plant Loading at thhe Night Peak on

August 30, 2020



Note- Plant avilability is recorded at 6.00 am on August 31, 2020

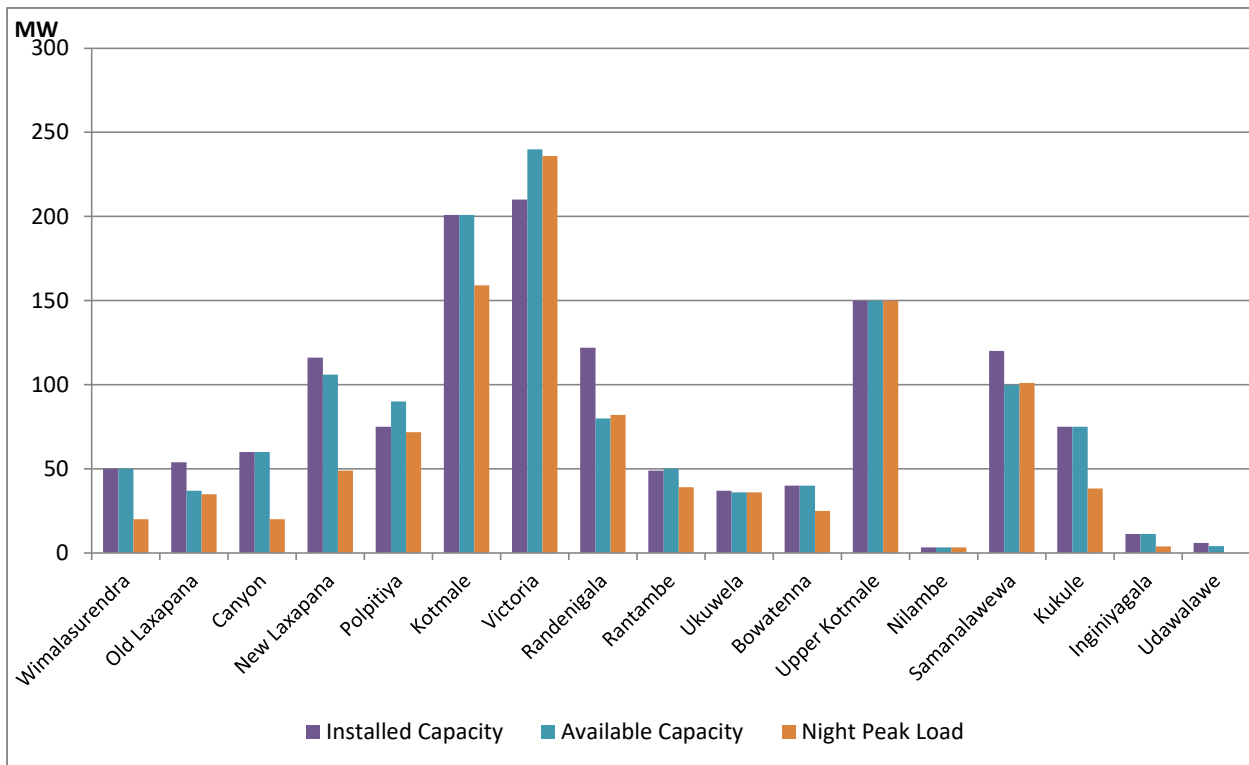
Major Hydro Plant Dispatch on August 30, 2020



Note- Available Generation is estimated based on plant availability at 6.00am on

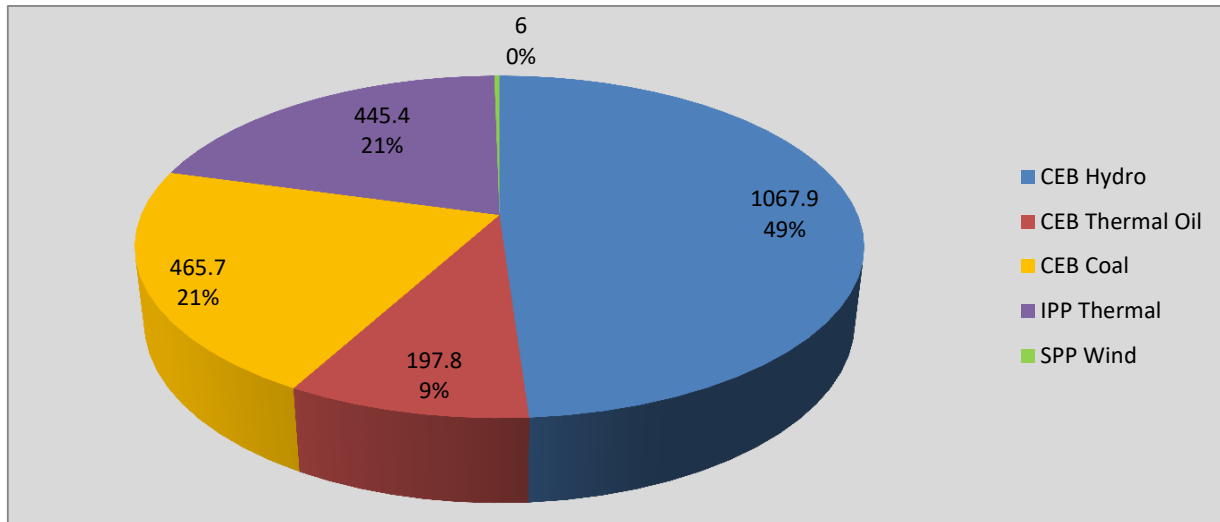
August 31, 2020

Major Hydro Plant Loading at Night Peak August 30, 2020



Note- Plant availability is recorded at 6.00 am on August 31, 2020

Contribution to the Night Peak in MW



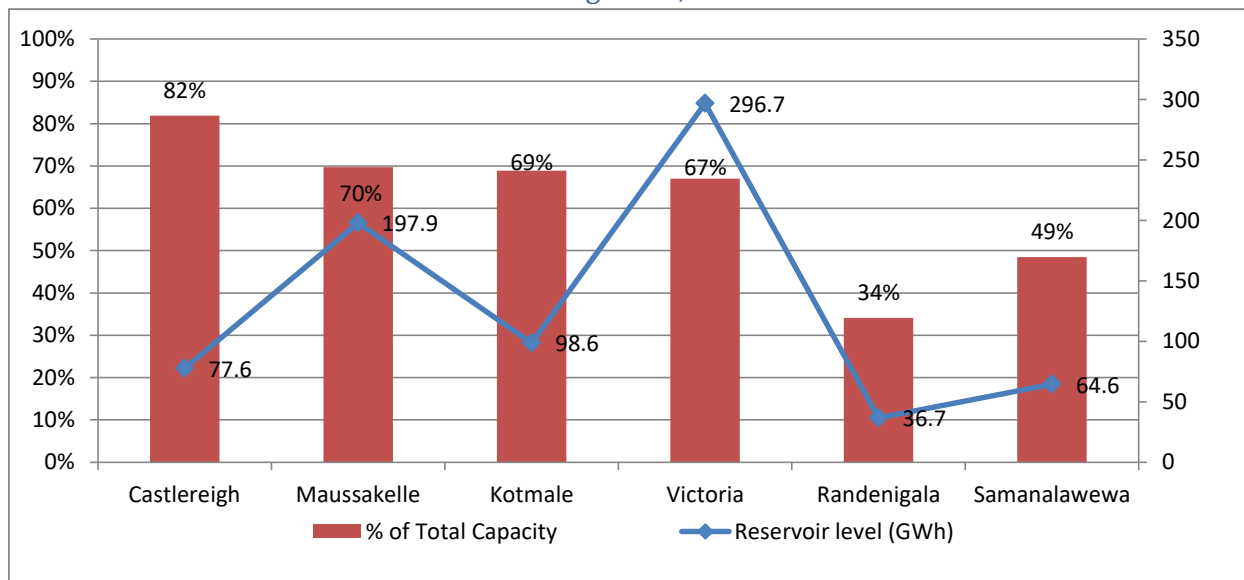
Night Peak*	2,182.8 MW
Day Peak	1,588.2 MW
Minimum Demand	1,304.3 MW

Notes: *The above chart pattern and night peak figure is presented excluding the contribution of Moragahakanda, other minihydro and biomass power plants from June 8 2020 onwards

**Day peak and Minimum demand includes the contribution from Moragahakanda, wind and solar plants

* in addition to the night peak figure presented above, Moragahakanda plant, other MiniHydro and Biomass Plants of installed capacity 200.30 MW has recorded total 61.80 MW at night peak

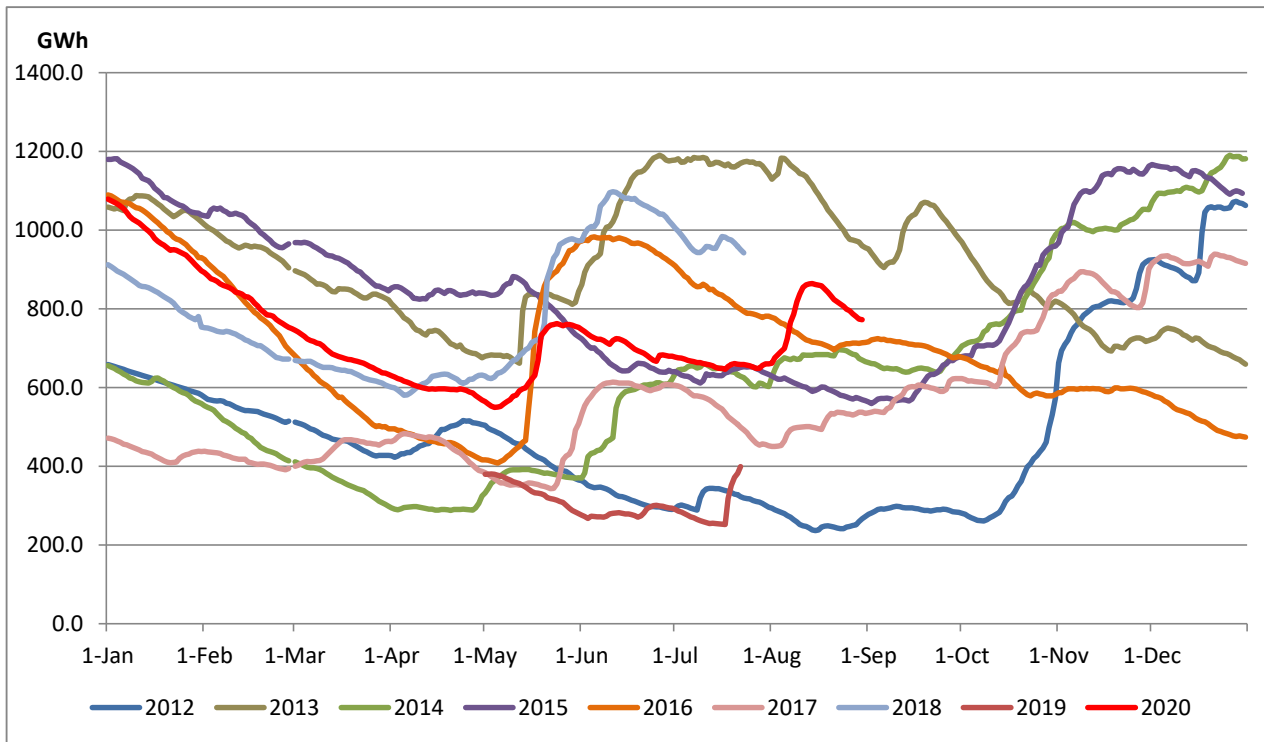
Reservoir Levels - as at 06.00 Hr on August 31, 2020



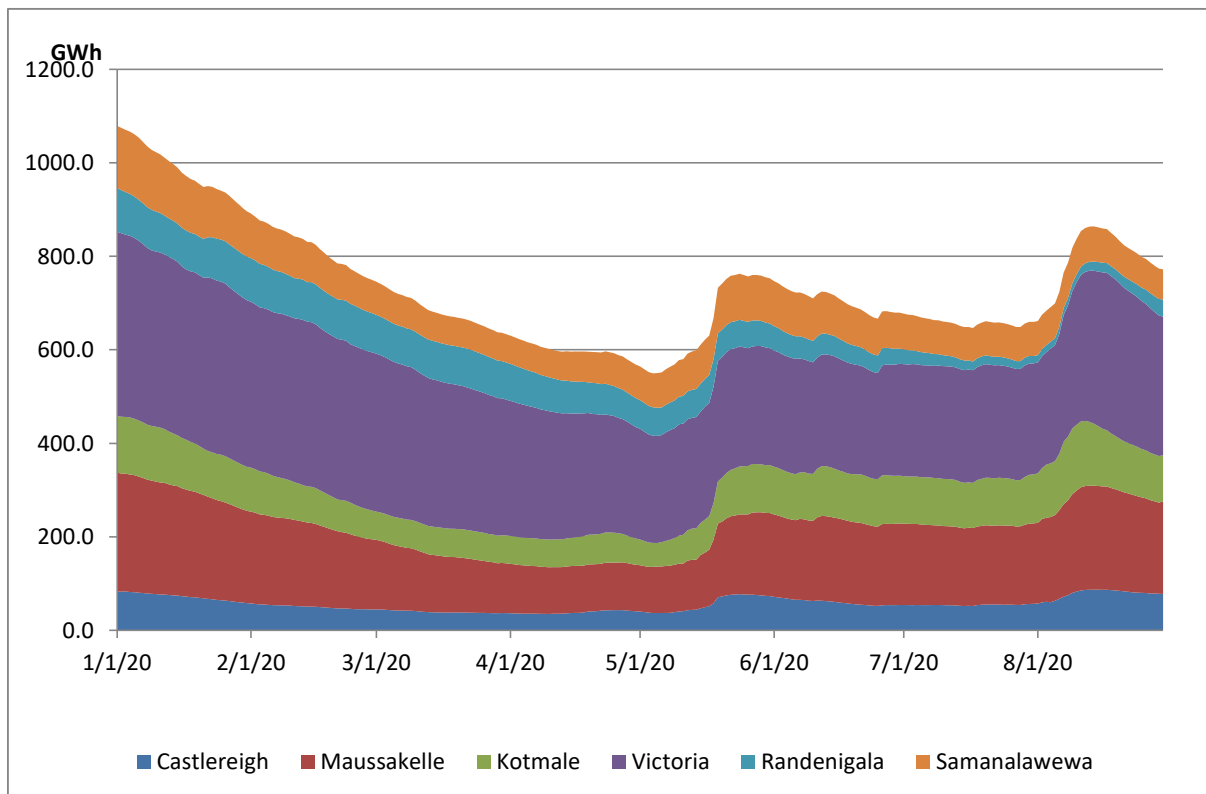
Total Reservoir Level(GWh)	772.1
% of Total capacity	64.1%

Comparison of Total Reservoir Storage Levels with Past Years

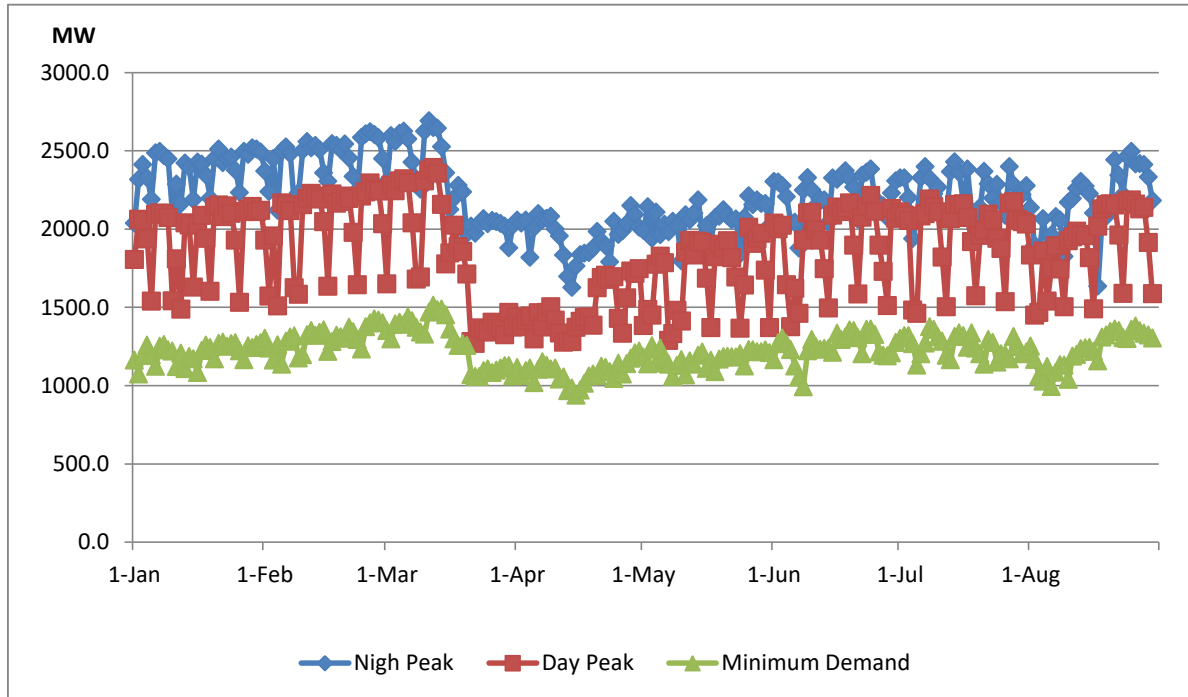
Data from June 2018 to March 2020 are not indicated in the graph



Variation of Major Hydro Reservoir Levels in the current year (GWh)



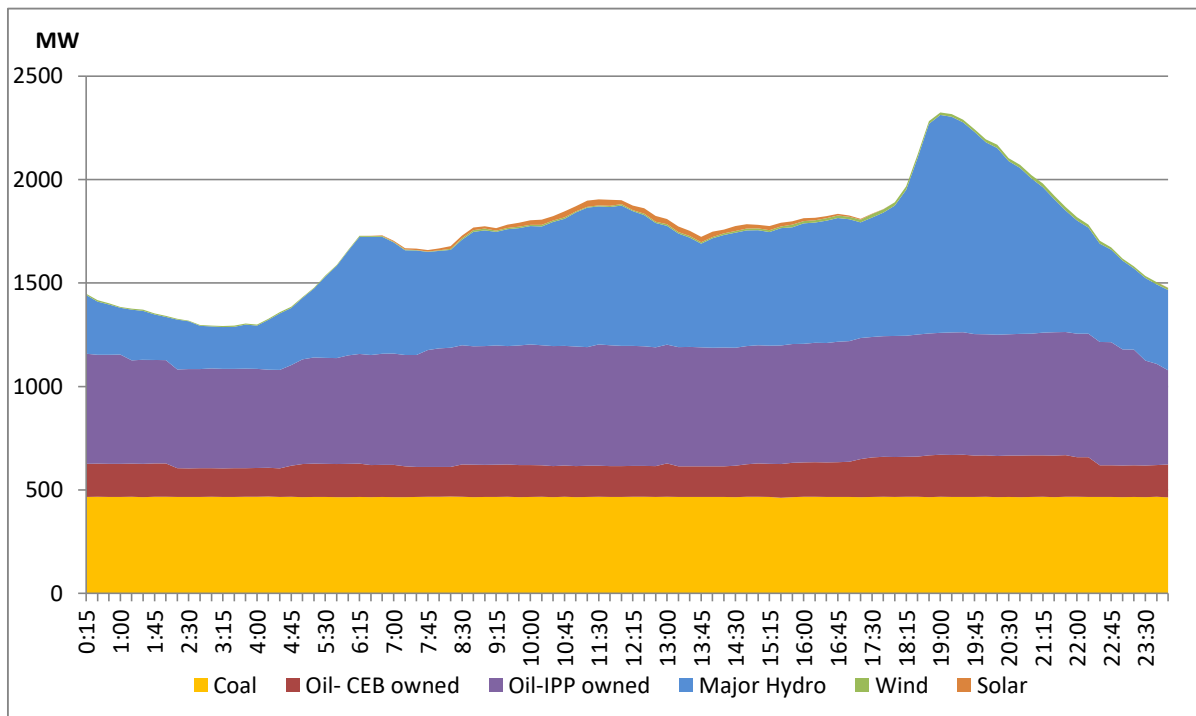
Variation of Demand during the current year



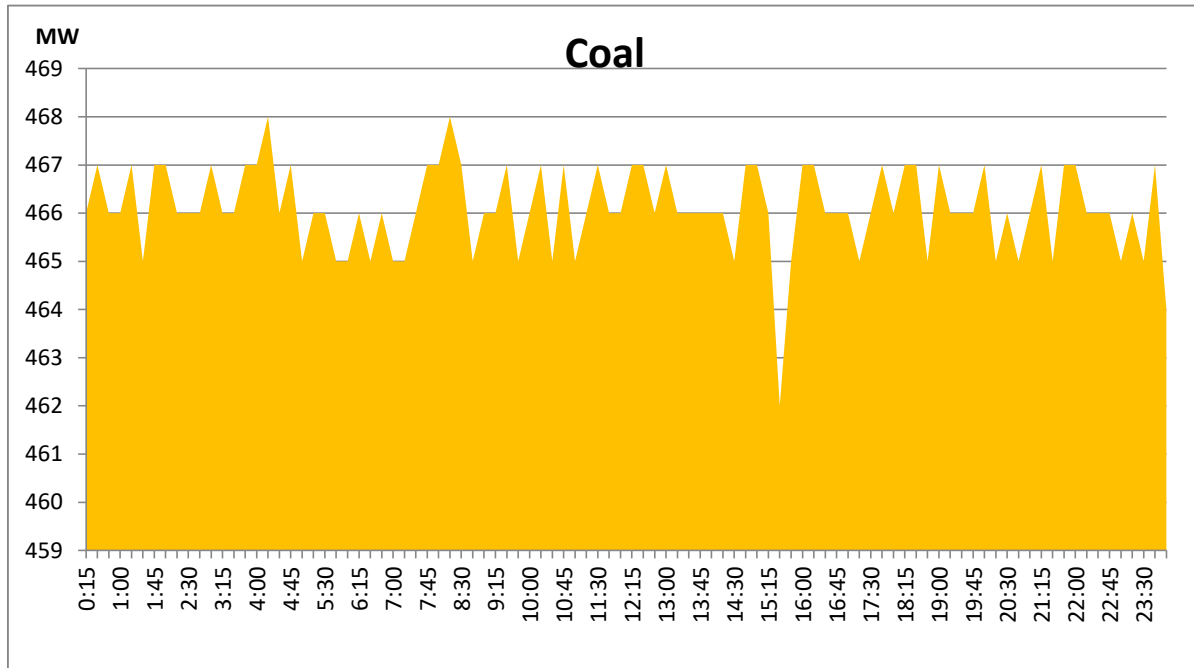
Notes: The night peak graph in the above chart is revised from June 8, 2020 to exclude the contribution from Mini hydro and biomass power plants
 Day peak and minimum demand graphs includes the contribution from Moragahakanda power plant
 All graphs include the contribution telemetered from solar and wind plants

Daily Load Curve - August 29, 2020

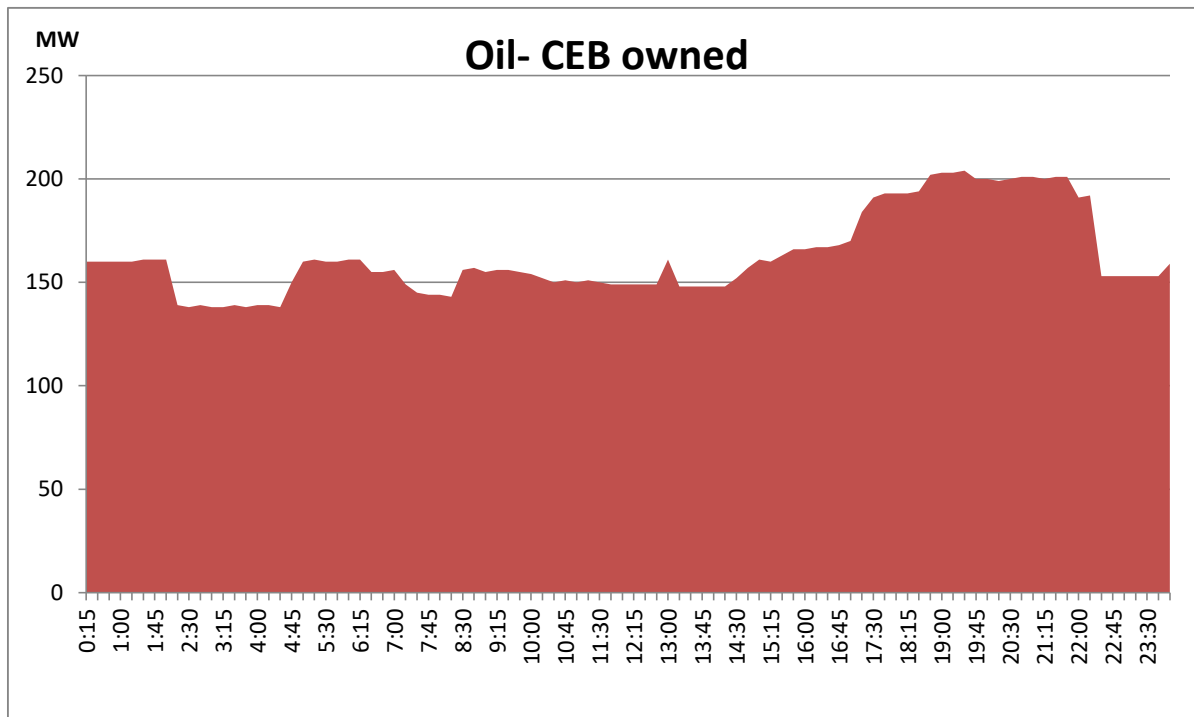
Solar and wind data is based on Telemetered Power Stations only



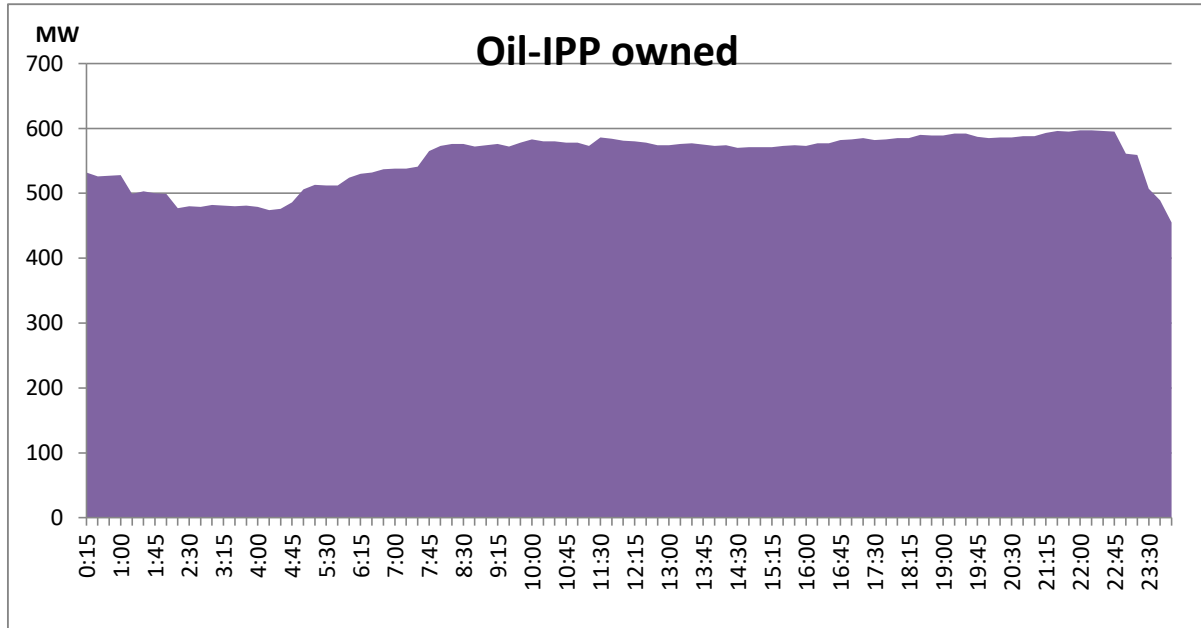
Coal generation during the day, August 29, 2020



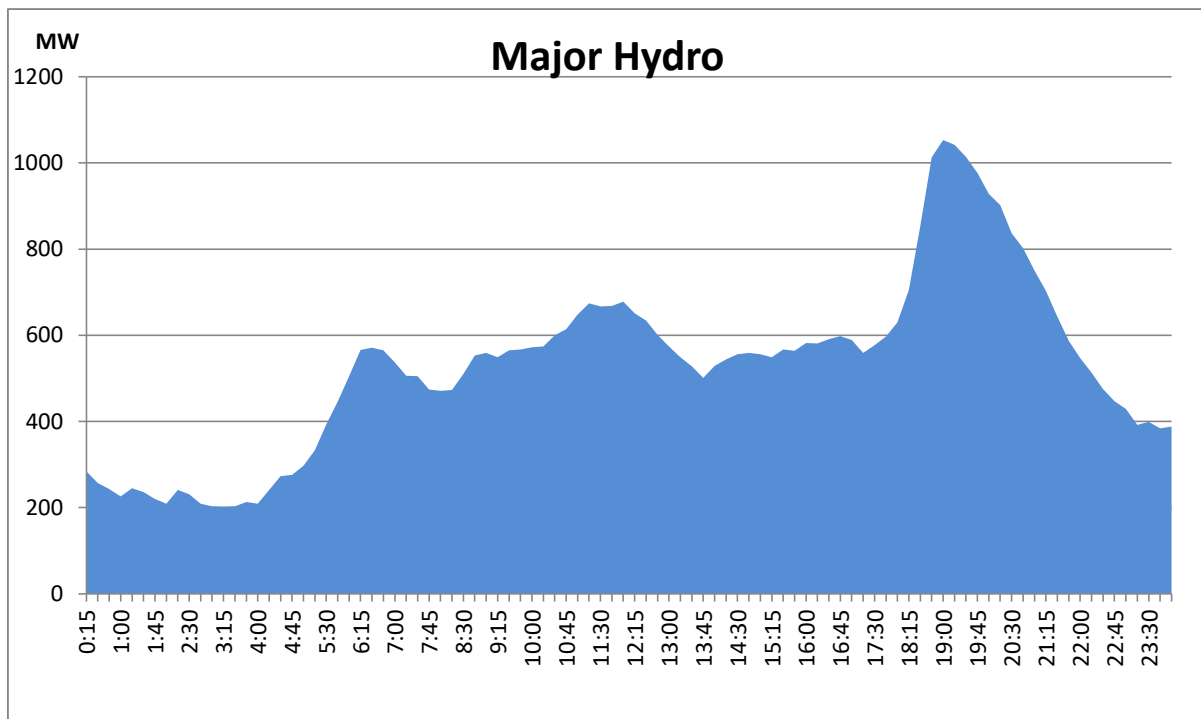
CEB Oil plant generation during, August 29, 2020



IPP Oil Plant generation during , August 29, 2020

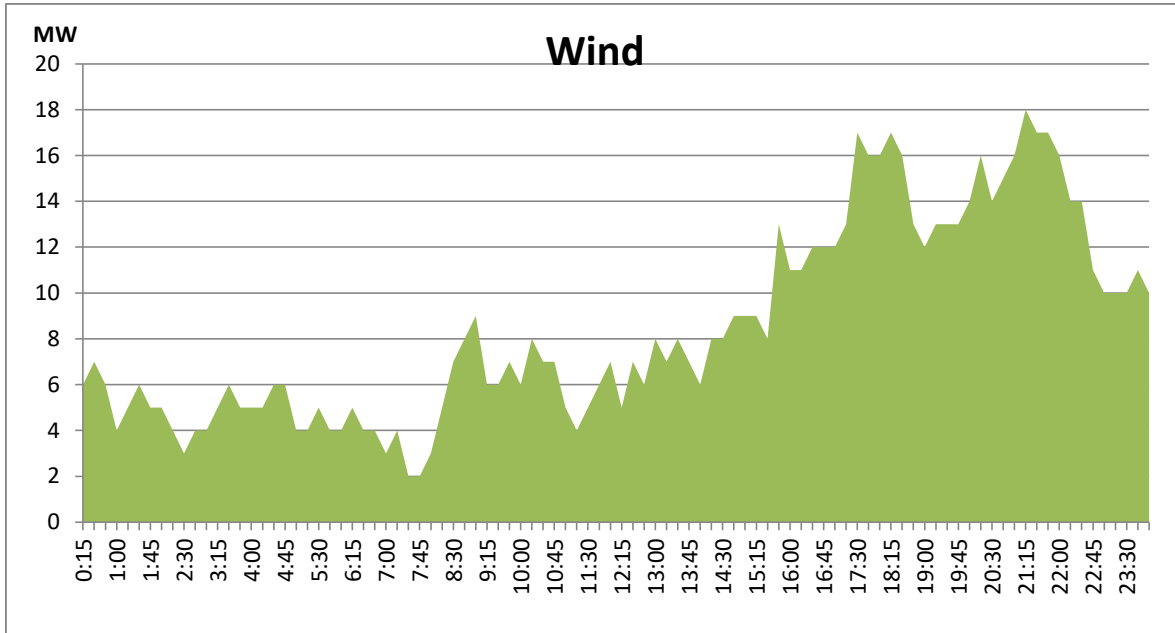


Major Hydro generation during th August 29, 2020



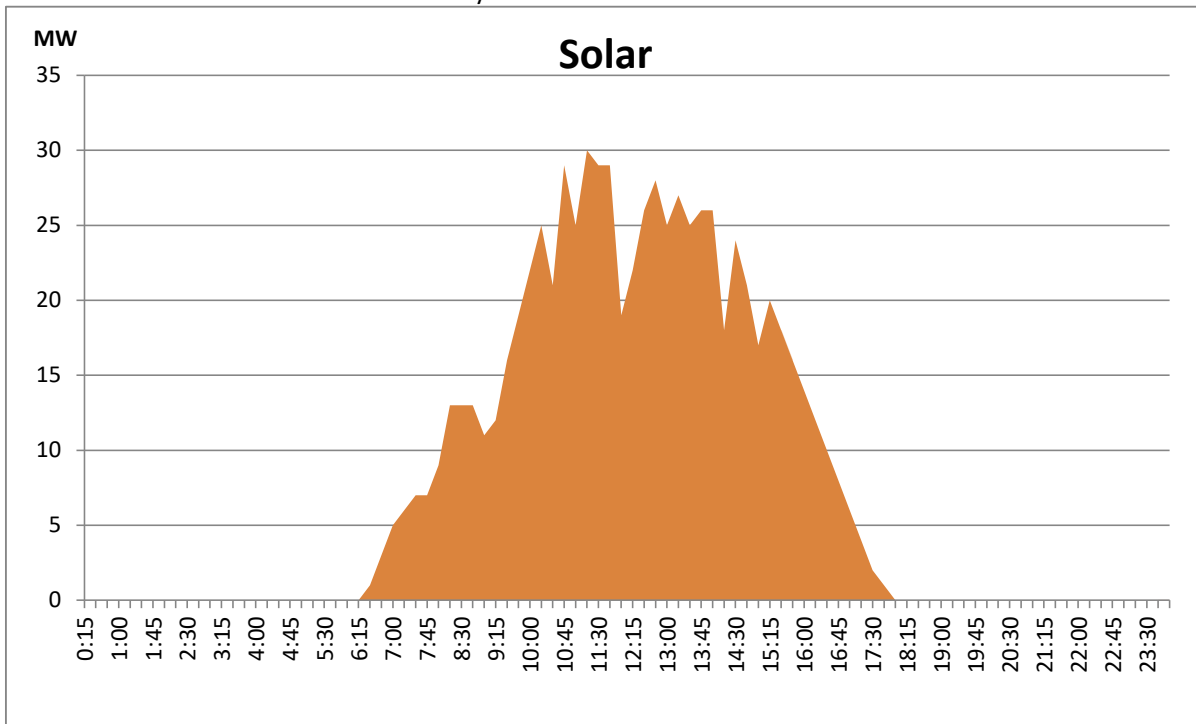
Wind generation during the day, August 29, 2020

Based on Telemetered Power Stations only



Solar generation during the day, August 29, 2020

Based on Telemetered Power Stations only



Plant	Installed Capacity (MW)	Plant Availability (MW)	Night peak Load (MW)	Plant Dispatch (GWh)
Wimalasurendra	50.00	50.00	20.00	331.00
Old Laxapana	53.80	37.00	34.90	840.00
Canyon	60.00	60.00	20.00	477.00
New Laxapana	116.00	106.00	49.00	1,328.00
Polpitiya	75.00	90.00	71.70	1,120.00
Kotmale	201.00	201.00	159.00	1,450.00
Victoria	210.00	240.00	236.00	3,460.00
Randenigala	122.00	80.00	82.00	138.00
Rantambe	49.00	50.00	39.00	75.00
Ukuwela	37.00	36.00	36.00	693.00
Bowatenna	40.00	40.00	25.00	415.00
Upper Kotmale	150.00	150.00	150.00	851.00
Nilambe	3.20	3.20	3.20	15.00
Samanalawewa	120.00	100.00	101.00	442.00
Kukule	75.00	75.00	38.20	137.00
Inginiyagala	11.25	11.25	3.80	104.00
Udawalawe	6.00	4.00	-	-
Puttalam Coal I	275.00	-	-	-
Puttalam Coal II	275.00	270.00	269.00	6,474.00
Puttalam Coal III	275.00	200.00	197.00	4,729.00
KPS Small GTs	65.20	35.00	-	-
KPS GT 7	113.00	115.00	-	-
KCCP	161.00	-	-	-
Sapugaskanda A	69.60	18.00	18.00	431.00
Sapugaskanda B	69.60	63.00	61.00	1,395.00
Uthura Janani	26.01	23.00	22.00	537.00
Barge CEB	60.00	60.00	60.00	1,445.00
CEB-Thulhiriya	10.00	7.20	9.00	61.00
CEB-Kolonnawa	20.00	16.00	14.40	129.00
CEB-Mathugama	20.00	12.80	12.70	156.00
ACE Matara	20.00	24.00	24.00	568.00
Asia Power	50.80	45.00	38.00	751.00
AES - Kelanitissa	163.00	130.00	130.00	3,038.00
Westcoast	270.00	270.00	134.00	3,043.00
Northern Power	30.00	-	-	-
ACE Embilipitiya	100.00	90.00	84.00	2,021.00
Vpower-Pallekele	24.00	24.00	25.00	224.00
Vpower-Galle	10.00	10.00	10.00	97.00
Vpower-Hamba.	24.00	-	-	-
Vpower-Horana	24.00	-	-	-
Altaaqa-Mahiya.	10.00	-	-	-
Altaaqa-Polon.	8.00	-	-	-
Solar	58.00		-	304.00
Wind	128.00		6.00	802.00
MH and BM	394.00		62.00	Not available
	3,552.46	2,746.45	806.01	

Night peak load of MH and BM only include loading of Minihydro plants of total capacity MW 200.3

Installed capacity of Solar, wind, Mini-hydro and Biomass plants are as of end of December 2019

Plant availability is the availability recorded at 6 am on

August 31, 2020

Major Incidents during the day

1) WCP ST tripped at 21:47hrs due to operation of HRSG boiler protection, and ST resumed generation at 22:17hrs.

Thermal Plant Fuel types

Power Station	Primary Fuel
CEB Thermal	
Sapugaskanda 1	Heavy Fuel
Sapugaskanda 2	Heavy Fuel
Kelanitissa Small Gas Turbines	Auto Diesel
GT 7 - Kelanitissa	Auto Diesel
Kelanitissa CCY	Naptha & Diesel
Lakvijaya 1	Coal
Lakvijaya 2	Coal
Lakvijaya 3	Coal
Uthuru Janani	Heavy Fuel
Barge CEB	Furnace Oil

Power Station	Primary Fuel
Private Thermal	
Asia Power	Heavy Fuel
Sojitz -	Auto Diesel
West Coast	Low Sulphur Furnace oil
ACE Embilipitiya	Furnace Oil